

Peaches by Fibre ⚡ood



Peaches by Fibre ood



version without double welt pockets

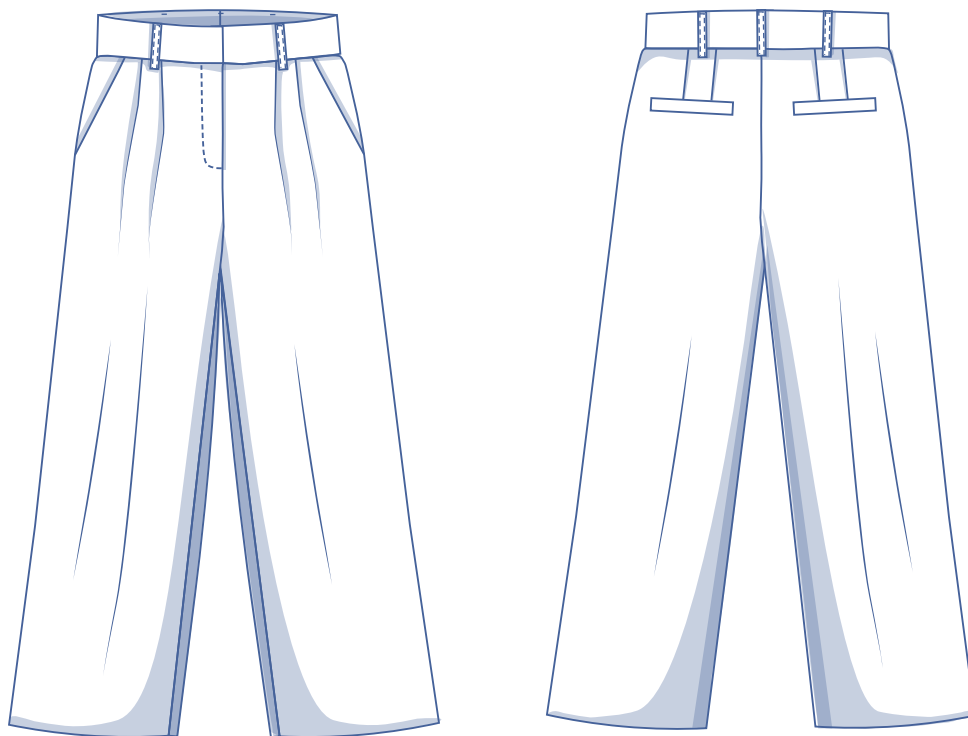


version with double welt pockets



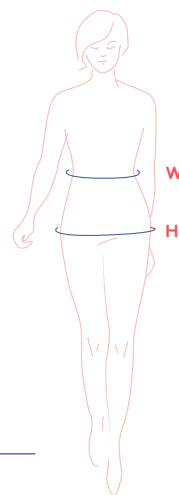
32 - 58

The Peaches trousers are perfect for young and old alike! These trousers are a true classic that frequently make an appearance on the fashion scene these days. These pleated trousers are high-waisted, wide-legged and have convenient side pockets. Expert sewistas can add welt pockets at the back for extra flair. However, if you had something a little easier in mind, skip the welt pockets. If you're a fan of monochrome outfits, then these trousers are perfect for pairing with the [Kai blazer](#) in the same shade. Do that and you'll be totally on trend.



size chart

size (EU)	32	34	36	38	40	42	44	46	48	50	52	54	56	58
UK	4	6	8	10	12	14	16	18	20	22	24	26	28	30
US	0	2	4	6	8	10	12	14	16	18	20	22	24	26
W (cm)	66	68	70	74	78	82	84	88	94.5	101	107.5	114	120.5	127
H (cm)	86	90	94	97	100	103	106	109	115	120	125	130	135	140



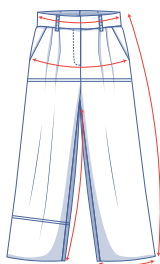
Waist (W): measure horizontally at the narrowest point of the body.

Hip (H): measure horizontally at the widest point of the lower body.

finished garment measurements (in cm)

size	32	34	36	38	40	42	44	46	48	50	52	54	56	58
side length*	110.75	111.25	111.75	112.25	112.75	113.25	113.75	114.25	114.75	115.25	115.75	116.25	116.75	117.25
inseam length	77.25	77.5	77.5	77.5	77.5	77.5	77.5	77.5	77.5	77.75	77.75	77.75	78	78
1/2 waistline measurement	34.25	35.25	36.25	38.25	40.25	42	43	45	48.25	51.5	54.75	58	61	64.25
1/2 hip measurement	48.75	50.75	53	54.5	56	57.5	59	60.75	64	66.5	69.25	71.75	74.25	77
hem circumference	49.75	52.75	56	57.5	58.75	60.25	62.5	63.75	67.25	69.75	72	74.5	76.75	79.25

* Including the waistband.



Compare the stated lengths to the measured or desired lengths. **Lengthen** or **shorten** the trouser legs and/or rise by cutting the pattern pieces at the indicated double lines and then spreading the pattern pieces out X cm from each other or overlapping them, where necessary. Make sure that the CF and CB lines and the side seams are always straight.

IMPORTANT

Adjust the fabric to be used based on these alterations.



supplies



- Thread
- Iron-on interfacing: max. 60 cm
- Zip: 15 cm (sz 32-44) - 18 cm (sz 46-58)
- Snaps (Ø 1.5 cm): 2
- Lining: 50 cm
- Fabric: see table

fabric used (in cm) F collection	32	34	36	38	40	42	44	46	48	50	52	54	56	58
blue fabric fabric width 145 cm	200	200	200	205	210	220	25	235	235	235	240	240	240	240

Find out everything you need to know about the Fibre Mood fabric collection and the accompanying fabric plans [here](https://www.fibremood.com/en/fabrics) or on www.fibremood.com/en/fabrics.

fabric used (in cm) standard	32	34	36	38	40	42	44	46	48	50	52	54	56	58
fabric width 140 cm	200	200	200	205	210	215	215	225	235	235	240	240	240	240

The corresponding fabric plan can be found on the last page of these sewing instructions.

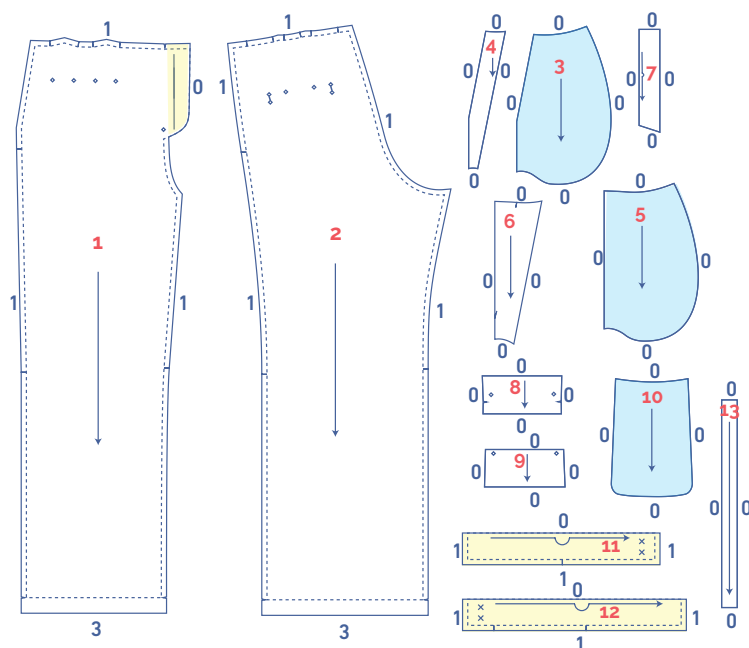
fabric advice



The Peaches trousers should be made in a fabric with a fluid drape. Crepe (made of wool, polyester or viscose, etc.), for example, works well. Linen is your go-to for a summer version of these trousers. Cotton is also an option, but it creates a slightly stiffer effect. Whatever you decide, be sure to opt for a medium to heavyweight fabric. Find out everything you need to know about the Fibre Mood fabric collection [here](https://www.fibre mood.com/en/fabrics) or on www.fibre mood.com/en/fabrics.

pattern pieces & seam allowances (in cm)

To sew the garment as described in the instructions, you must draw the illustrated seam allowances around the paper pattern pieces before cutting them out.



lining



iron-on interfacing

1. front: 2x
2. back: 2x
3. inner pocket bag lining: 2x
4. inner pocket bag facing: 2x
5. pocket lining front: 2x
6. outer pocket bag front: 2x
7. fly LF: 1x on fabric fold
8. pocket welt back: 2x
9. outer pocket bag back: 2x
10. pocket lining back: 4x
11. RF waistband: 1x on fabric fold
12. LF waistband: 1x on fabric fold
13. belt loops: 1x, draw a rectangle of 40x3 cm

TIP: If you're using a thin fabric, then you can cut from this for the inner pocket bag and pocket lining front of the front pockets instead of using lining. If you do this, then you'll skip the inner pocket bag facing and fabric outer pocket bag front.

Mark key points on the pattern piece using a basting thread:

- Mark the tip of the dart/dart intake, the pleats and the zip by sewing through the centre of the (◇) with needle and basting thread (↲).
- Mark the location of the buttons by sewing through the centre of the (X) with needle and basting thread (↲).

Indicate crucial points on the outline of the pattern:

- Nick the pattern paper and fabric at the places with a single vertical line (|).
- Cut a small corner out of the fabric at a V symbol or on the finished hemline.
- Cut a small corner (V notch) out of the pieces that lie on the fabric fold to mark the middle of these pieces.

IMPORTANT

The pieces highlighted in light yellow have iron-on interfacing attached to the wrong side.

sewing instructions



The method used to finish sewing the garment depends on the fabric used. The pieces are always sewn together with the right sides of the fabric matching exactly, unless stated otherwise.

FP front panel

BP back panel

RFP right front panel

LFP left front panel

CF centre front

CB centre back



right side



wrong side



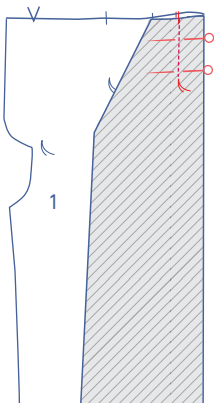
lining right side



lining wrong side

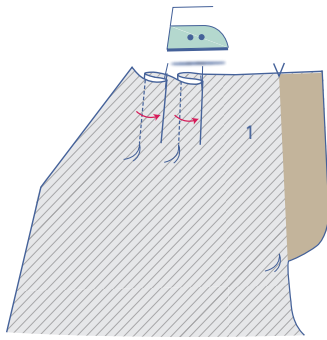


iron-on interfacing

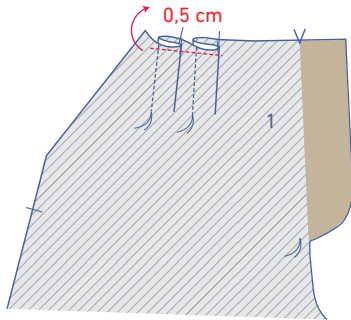


1

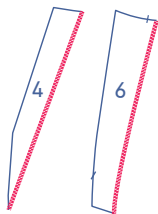
Shape the pleats by folding the nicks horizontally along the front (1) together by consistently matching each of the nicks on the waistband seam with the right side of the fabric facing inwards. Sew the pleats vertically in place, always up to the basting thread.



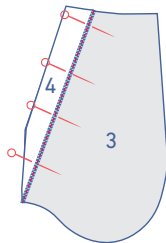
Turn the front over so that the wrong side is facing up. Press the pleat allowance towards the CF.



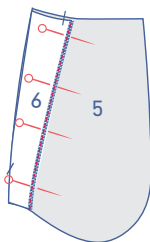
Sew the pleats together at 0.5 cm from the waist seam.



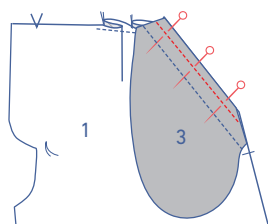
Finish the slanted sides of the inner pocket bag facing (4) and the outer pocket bag front (6) using an overlock stitch.



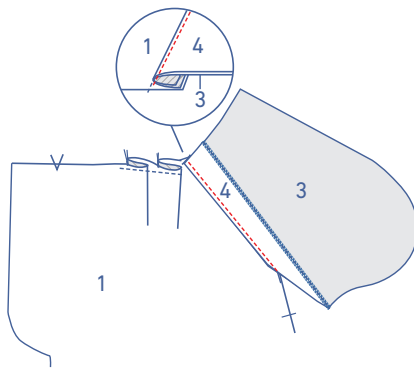
Pin the inner pocket bag facing's wrong side to the inner pocket bag lining's right side. Stitch in the overlocked ditch.



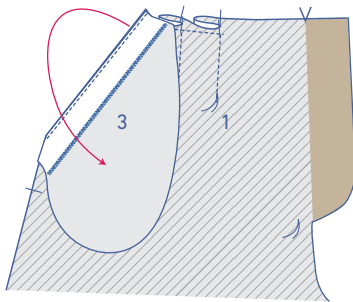
Pin the front inner pocket bag piece with the wrong side on the pocket lining front's right side. Stitch in the overlocked ditch.



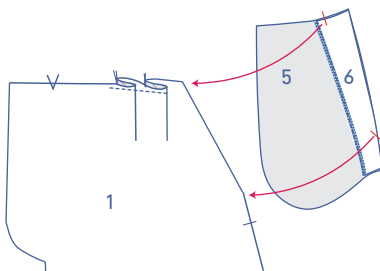
Pin and sew the slanted edges of the front and the inner pocket bag lining with facing, together.



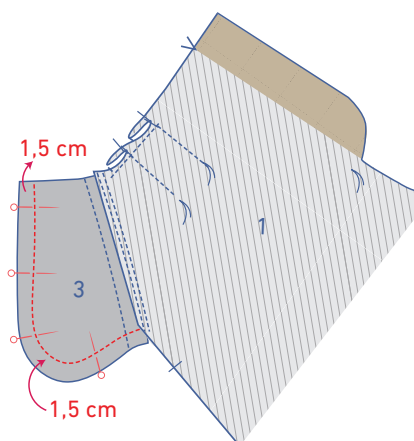
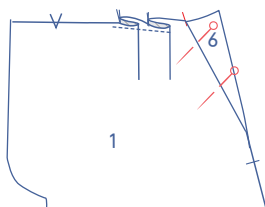
Fold the inner pocket bag with facing and the seam allowance of the stitched part over to the inner pocket bag with facing. At 2 mm from the seam, sew through all the layers (inner pocket bag + underlying seam allowance) of the inner pocket bag with facing.



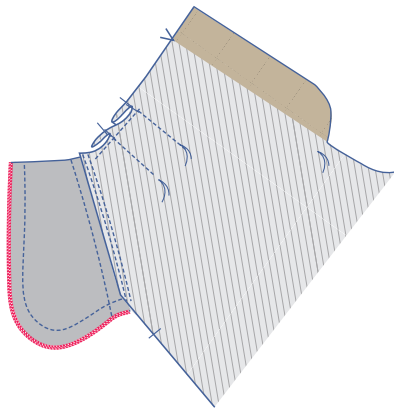
Fold the bag all the way over to the wrong side.



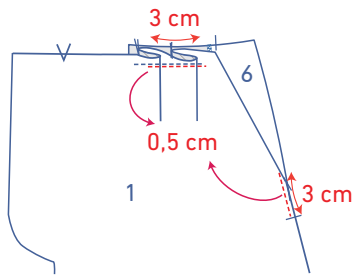
Lay the pocket lining front with the outer pocket bag front behind the front. The right side should be facing up. Pin into place.



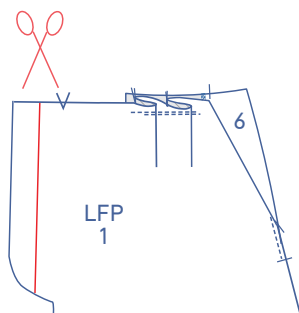
Lay the front to the side and place both pocket pieces neatly on top of each other. Pin and sew the contours of the pocket pieces together at 1.5 cm from the edges.



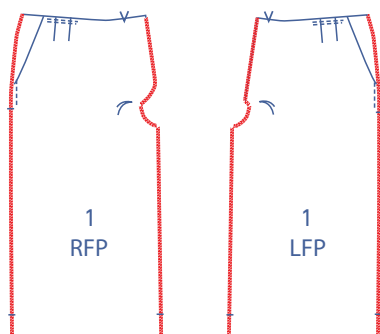
Finish the raw edges of the pocket pieces using an overlock stitch.



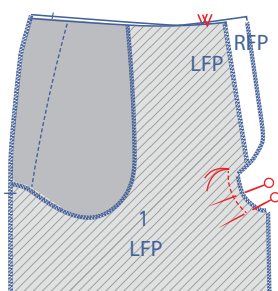
Fold the front back to where it belongs. Sew the pocket pieces to the front at the top and side at 0.5 cm from the raw edges.



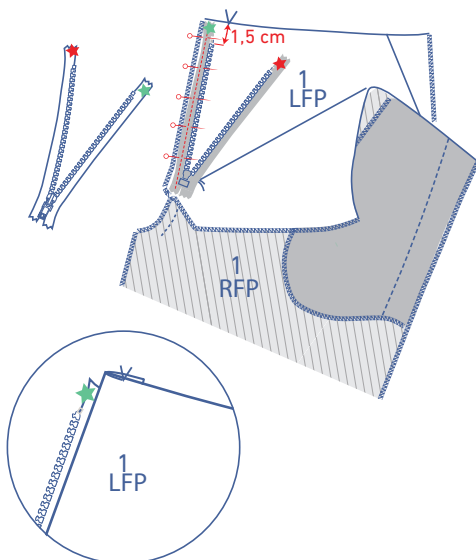
Trim away the excess fabric of the LF shaped fly along the indicated line.



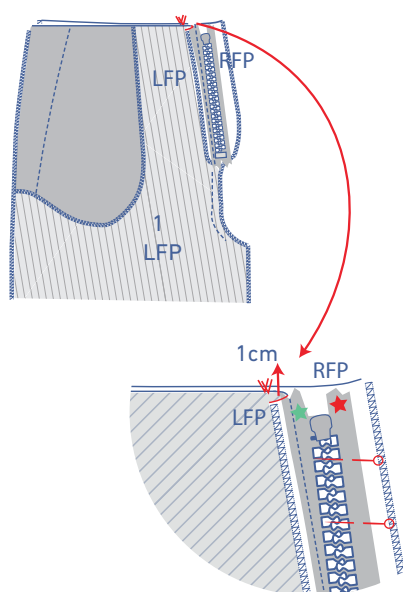
Finish the CF edges and the side seams and inseams using an overlock stitch.



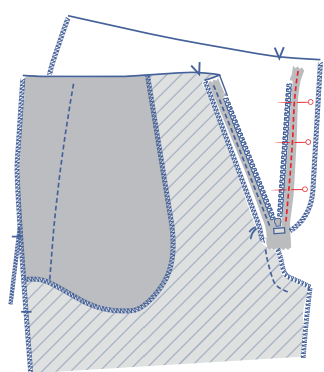
Pin the RF and LF together. Make sure that the V notches on the CF match perfectly. The shaped fly of the RF should extend past the LF. Sew a piece of the CF seams in place starting at the basting threads up to around 2 cm from the edge of the inseam.



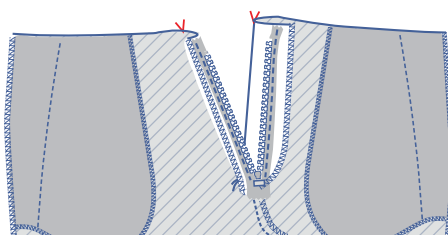
First lay the zip with the right side facing up. Open the zip and turn the zip tape marked with a small green star over to the right and onto the LF. The edge of the zip tape should lay next to the overlock stitching. The zip teeth should lie 1.5 cm under the top edge. Pin and sew in place at 1 cm from the CF seam (= the middle of the zip tape). Next fold the zip tape back to the left.



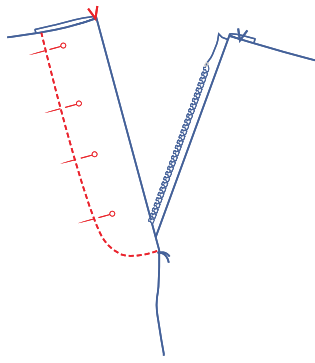
Close the zip and fold both front pieces with the right sides facing each other. The V notches indicating the CF should match perfectly. Smooth both pieces flat and pin the zip tape (marked with a red star) in place to the shaped RF fly.



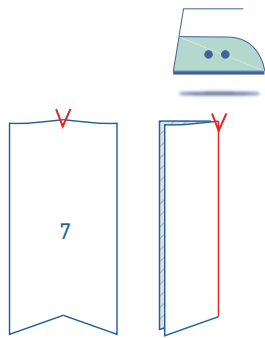
Open the zip and stitch the zip tape in place using the zip presser foot. Close the zip.



Fold the RF shaped fly over to the V notch.



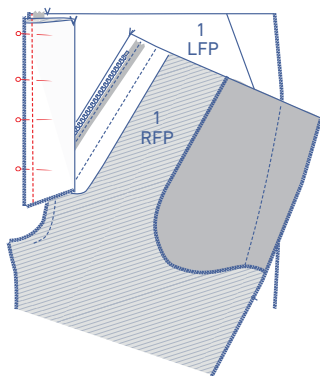
Pin in place and top stitch (along the right side). This stitching traces along the contours of the shaped fly.



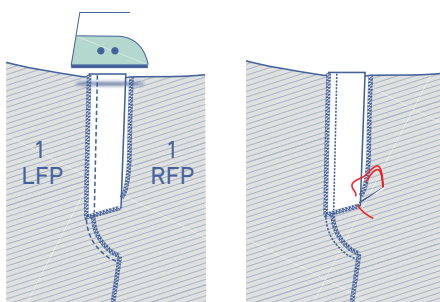
Fold the LF fly (7) in half lengthwise to the V notches with the right side of the fabric facing inwards.



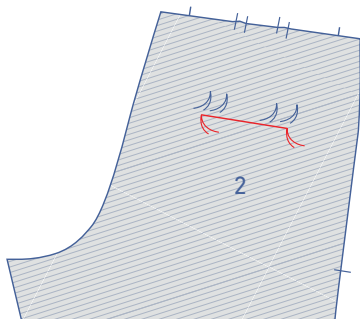
Finish the raw edges together at the side and bottom by using an overlock stitch.



Pin the fly to the seam allowance of the LF and the zip and sew in place.

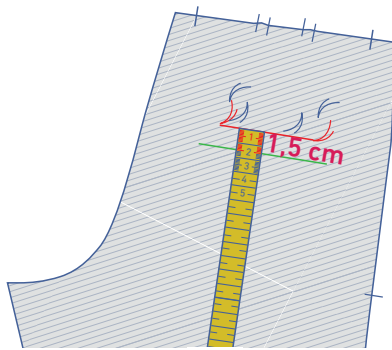


Press the fly to the side and close the zip. Making just a few stitches, sew the bottom of the shaped RF fly and the LF fly together.

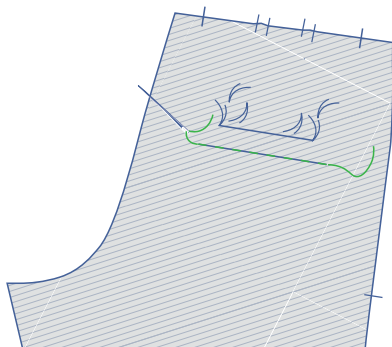


2

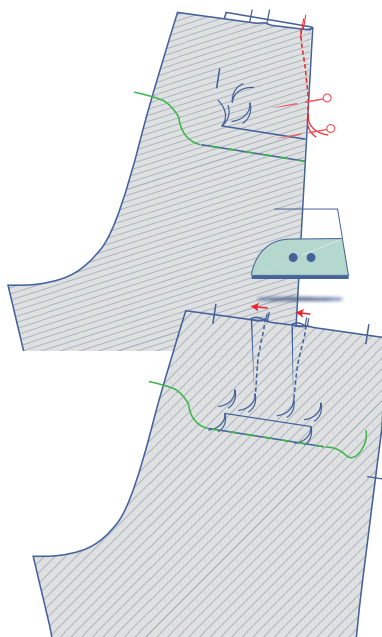
Use tailor's chalk to draw a straight line joining the two bottom-most basting threads of the back pocket (2) (along the wrong side).



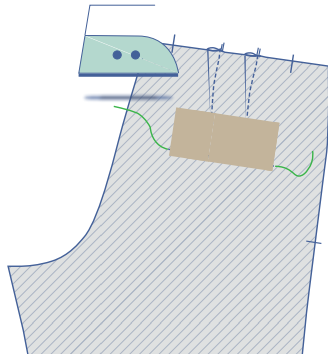
Draw a temporary parallel line 1.5 cm under the chalk line.



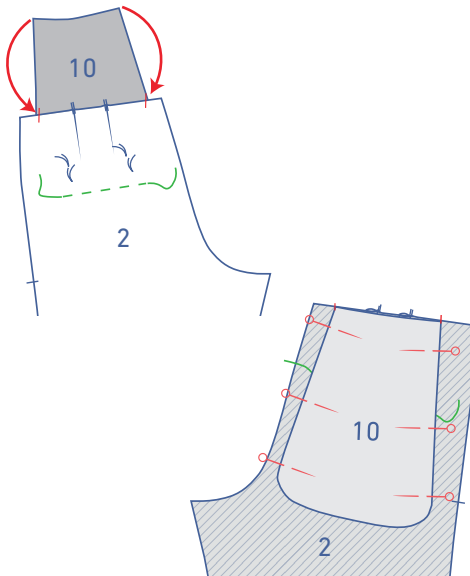
Use a brightly-coloured thread to tack along these chalk lines, so that this help line is visible on the right side of the back.



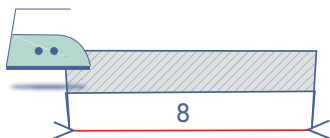
Fold the back (2) in half with the right side of the fabric turned inwards. Always ensure that the waistband nicks on the waistband seam match perfectly. Sew the dart/dart intake off towards the basting thread. Sew 1 cm past the basting thread, so that you've sewn past the fabric. Snip the thread and make a knot. Press the dart/dart intake towards the CB.



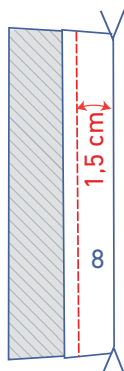
Press a strip (4.5 x 14.5 cm) of iron-on interfacing at the place indicated.



Turn the back over so that the right side is facing up. Place 1 piece of the pocket lining back (10) under the back between the nicks on the waistband seam and with the wrong side matched to the wrong side of the back. Pin (temporarily) in place.



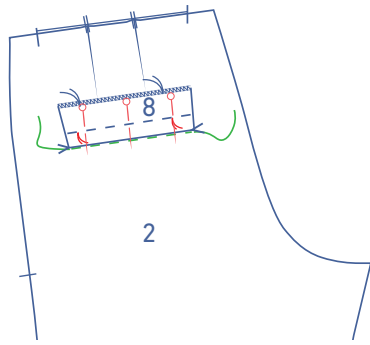
Press the pocket welt back (8) to the V notches with the right side of the fabric facing outwards.



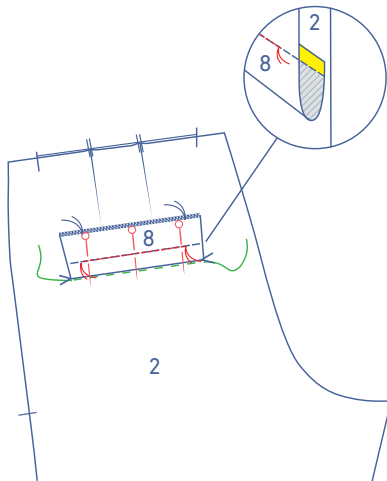
Sew a parallel line using a long stitch length at 1.5 cm next to the fold line.



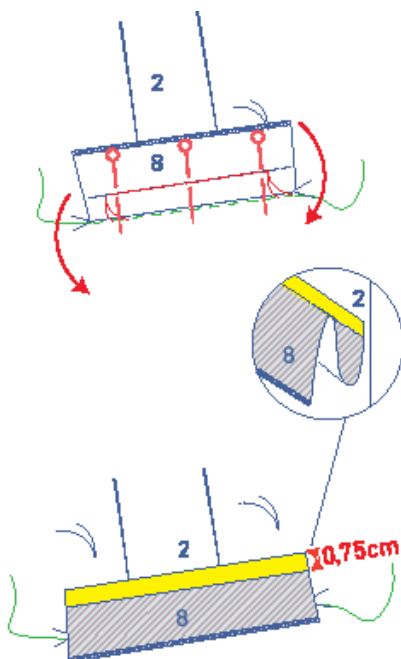
Finish the bottom-most raw edge of the pocket welt back using an overlock stitch.



Place the pocket welt back (with the fold line at the bottom as indicated on the illustration) on the right side of the back (the folded welt = shortest piece is at the bottom), making sure the basting threads match perfectly. Pin into place.



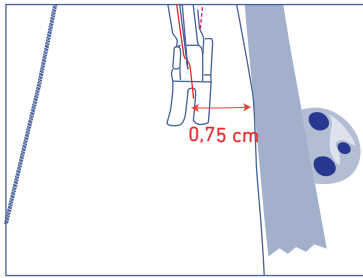
Sew along the previous stitching (the long stitches) exactly from one end of the basting thread to the other end of the basting thread.



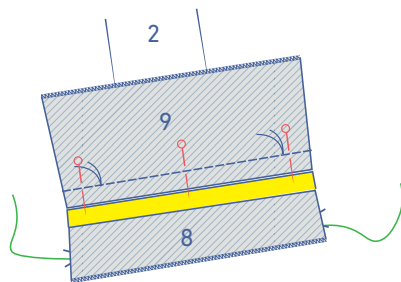
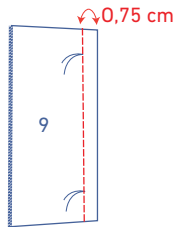
Fold the piece of the pocket welt back with the overlocked side down.



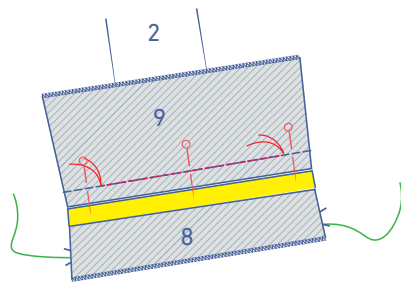
Finish the longest straight raw edge of the outer pocket bag back (9) using an overlock stitch.



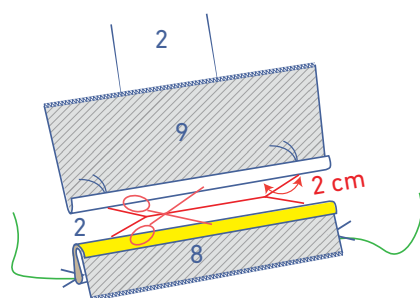
Sew a parallel line using a long stitch length at 0.75 cm from the straight side with no overlock stitching. Stick a piece of tape 0.75 cm away from the needle and use this as a guideline for sewing in a perfectly straight line.



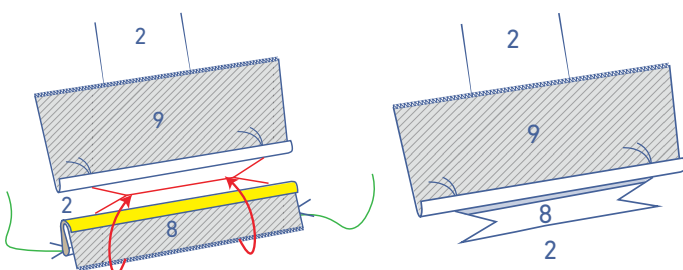
Place the non-overlocked straight side of the outer pocket bag back against the seam allowance of the pocket welt back. The outer pocket bag back should have the right side facing down. Pin into place.



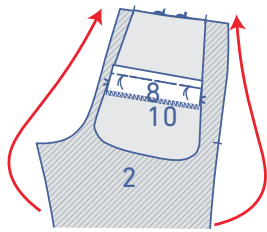
Sew along the previous stitching exactly from one end of the basting thread to the other end of the basting thread.



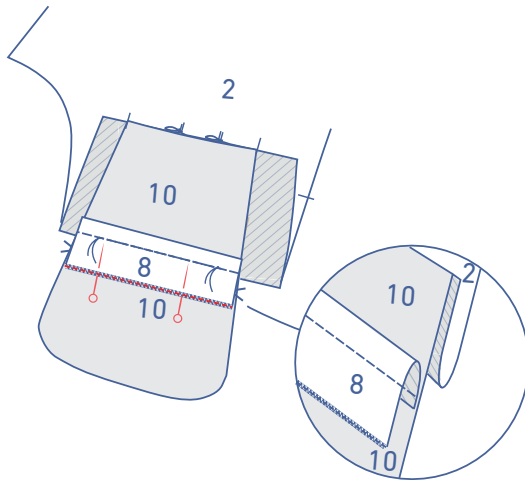
Fold both pieces to the side and snip into the back perfectly down the middle of the 2 lines of stitching, always stopping at 2 cm from the basting threads. At each end of the line that's just been cut, snip a perfect diagonal line to the top corner and a perfect diagonal line to the bottom corner. (You should have 4 diagonal lines in total.)



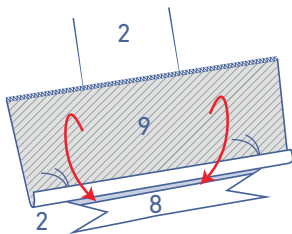
Turn the pocket welt back through the opening towards the wrong side of the back.



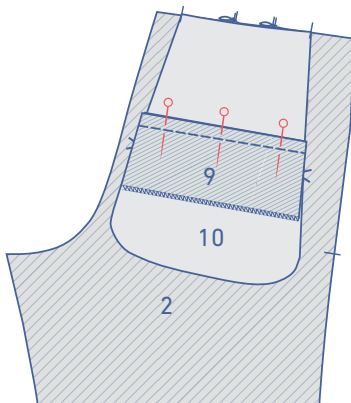
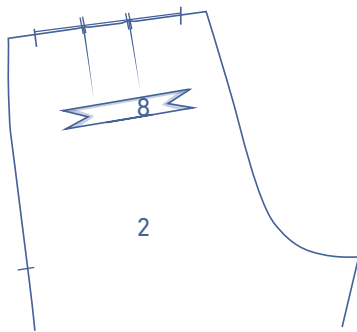
Lay the back with the wrong side facing up.



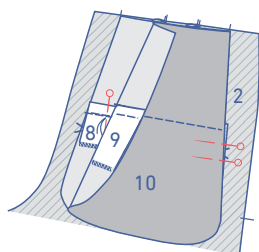
Pin the bottom side of the pocket welt back to the pocket lining back and stitch in the overlocked ditch.



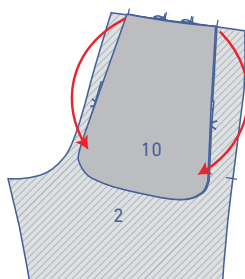
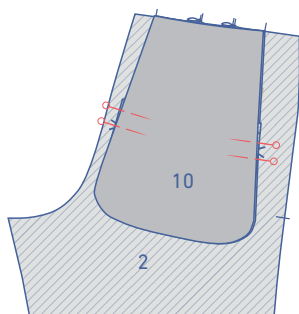
Now fold the outer pocket bag back through the opening towards the wrong side of the back. Lay both pieces (welt and outer pocket bag) neatly flat, making sure that they're aligned nicely at the corners. Pin these together.



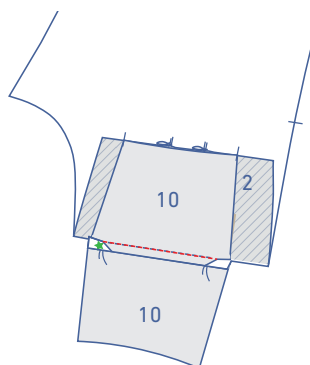
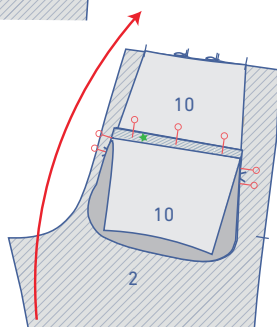
Turn the back over with the wrong side facing up. The seam allowance of the outer pocket back should face up.



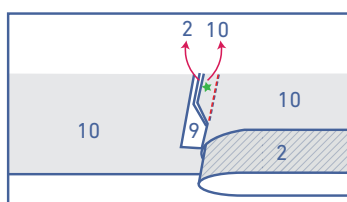
Place the second piece of the pocket lining back on the first piece with the right side facing down. Make sure that the raw edges of both pocket linings match perfectly. Pin the outer pocket bag to the pocket lining. It should now be impossible for both pieces to move.

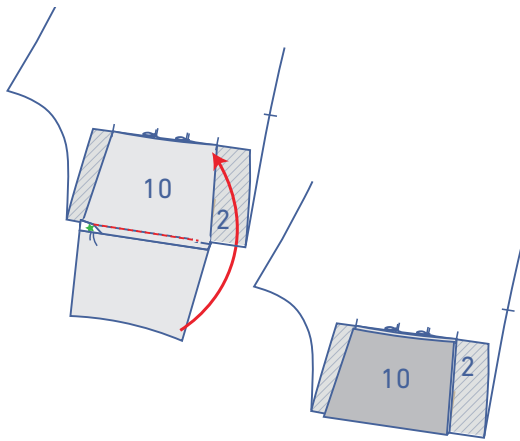


Fold the top piece of the pocket lining down to the seam allowance of the outer pocket bag (marked with a green star) to sew it to this pocket lining.

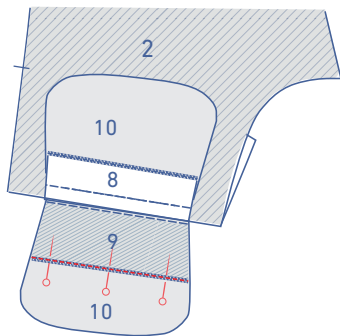


Take the seam allowance with the piece of the pocket lining that you just folded down. Lay the back + the first pocket lining to the side so that you can start sewing. Stitch in the previous stitching (in the ditch).

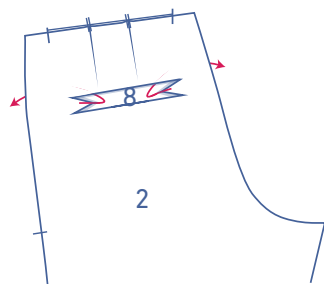




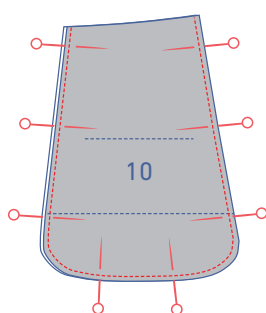
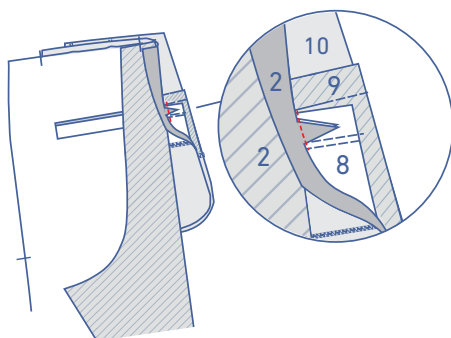
Fold the pocket lining back up.



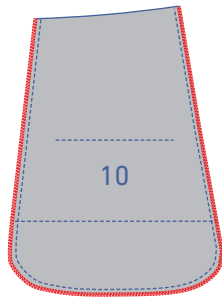
Now pin and sew the bottom of the outer pocket bag to this pocket lining using an overlock stitch.



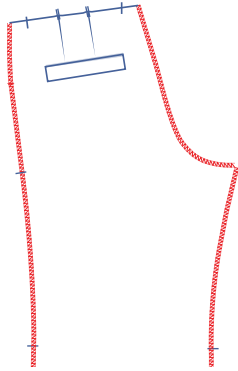
Tuck the notches at each end created by your diagonal cuts into the wrong side. Fold the back to the side and sew the notches in place. Sew from one corner of the notch to the other.



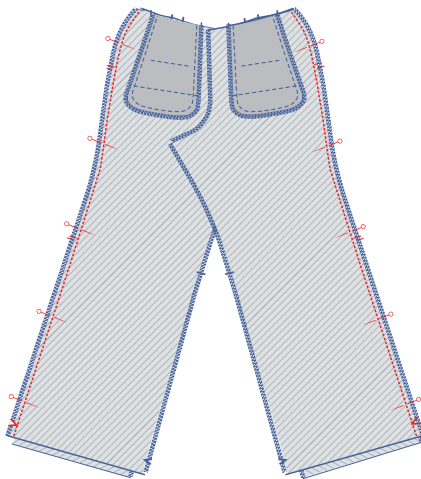
Pin and sew the contours of the pocket linings together.



Finish the raw edges together using an overlock stitch.

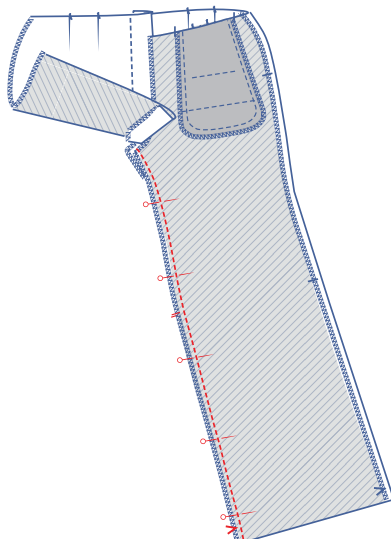


Finish the CB seams, side seams and the inseams using an overlock stitch.

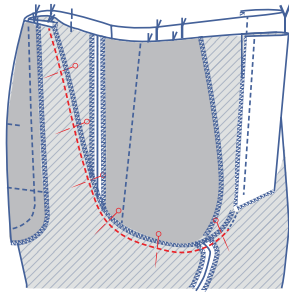


3

Pin and sew the side seams of the front and back. Press the seams open.

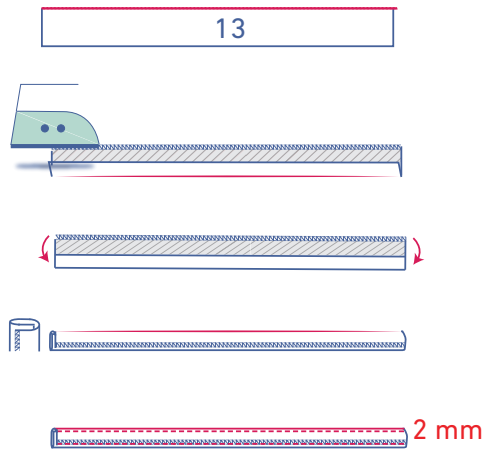


Pin and sew the inseams. Press the seams open.



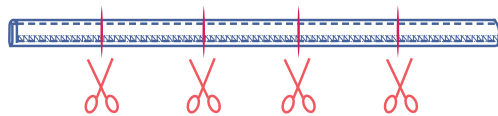
4

Sew one trouser leg in the other with the right sides of the fabric facing. Pin and sew the crotch seam.

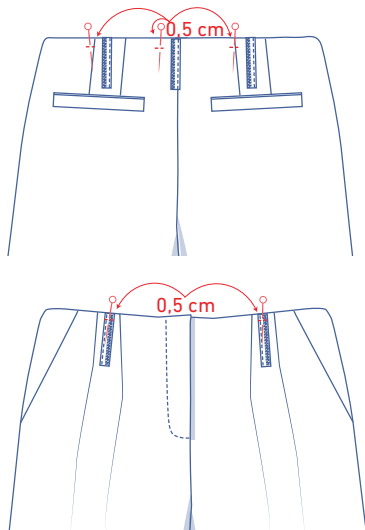


5

Finish 1 long side of the belt loops (13) using an overlock stitch. Press the finished side over to the wrong side and press the finished side over this. Sew in place 2 mm away from both sides.

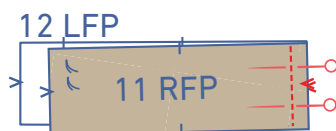


Cut the strip for the belt loops into 5 equal parts.



Pin each short side of the 5 belt loops to the waistband seam:

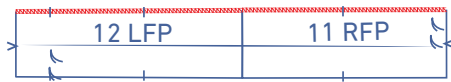
On the back: 1 to the CB, then 1 at each of the 2 darts. On the front: 1 between each of the pleats. Sew in place at 0.5 cm from the top edge.



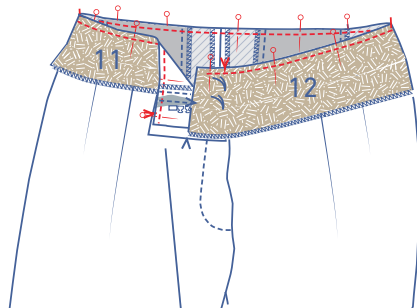
Pin and sew the CB seam of the RF waistband (11) and LF waistband (12). Press the seam open.



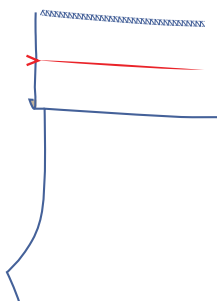
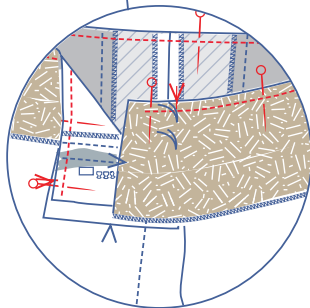
Fold the waistband in half lengthwise with the right side of the fabric facing outwards to create a crease.



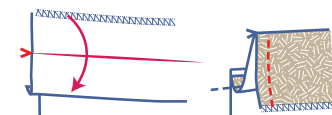
Finish the indicated long side of the waistband using an overlock stitch.



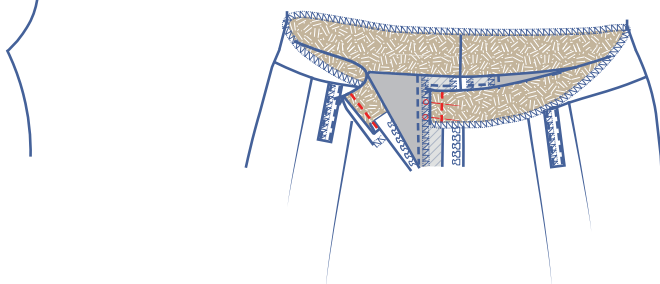
Pin the waistband to the waistband with the CB seam so that it matches the CB seam of the trousers, and so that the nicks match the side seams and the nick marking the CF matches the V notch of the LF. The edge of the waistband should be 1 cm past the finished edge of the RF and the LF fly. Sew in place.

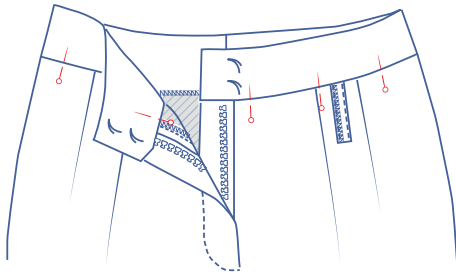


First, fold the waistband all the way up.

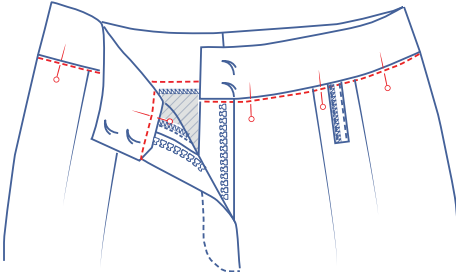


Fold the waistband in half lengthwise along the pressed crease. Sew the short sides.

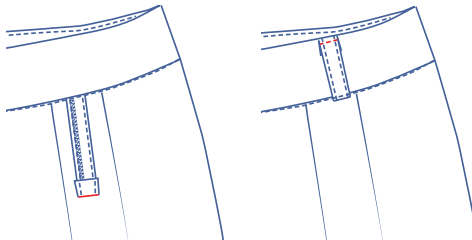




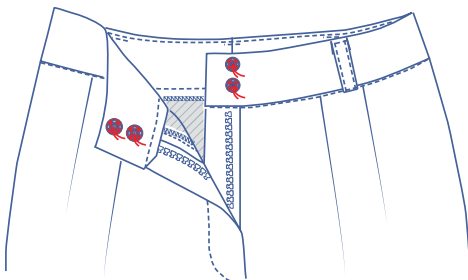
Then turn waistband inside out.
Lay the waistband nicely flat and pin the waistbands together along the right side.



Open up the fabric sufficiently and stitch directly in the ditch.



Fold the top of the belt loops 1 cm over and sew the top of each belt loop securely to the waistband.



6

Sew the snaps on at the places indicated.

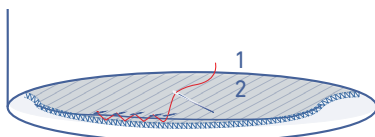


7

Finish the hem using an overlock stitch.



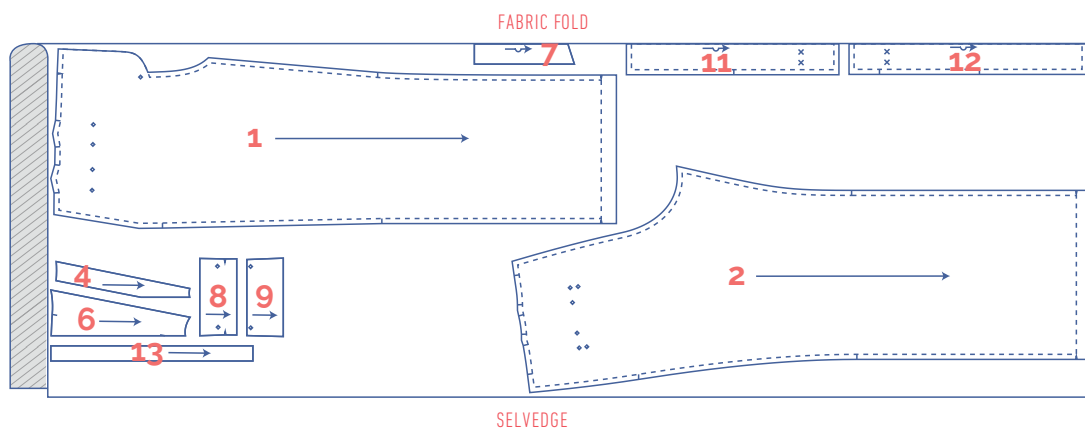
Press the hem allowance up to the V notch.



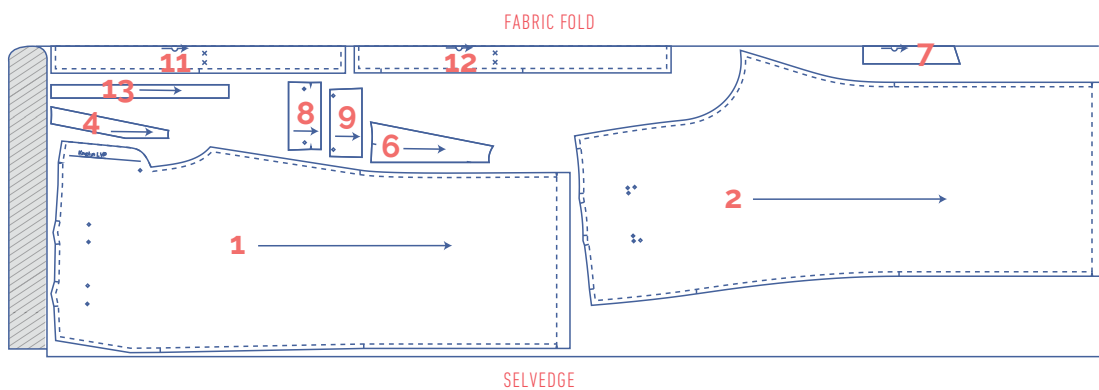
Sew the hem allowance in place.

fabric plan for standard fabrics 140 cm wide

size 32 - 46



size 48-58



fabric plan for lining 140 cm wide (size 32-58)

