

Jill by Fibre ⚡ood

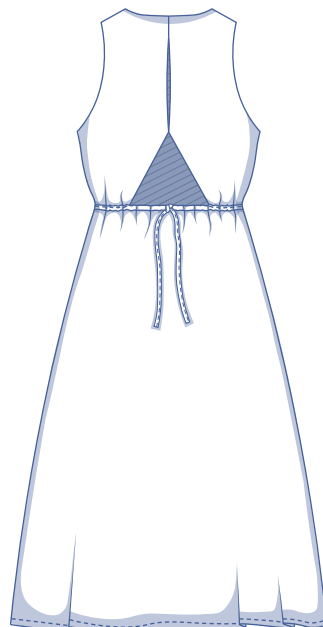
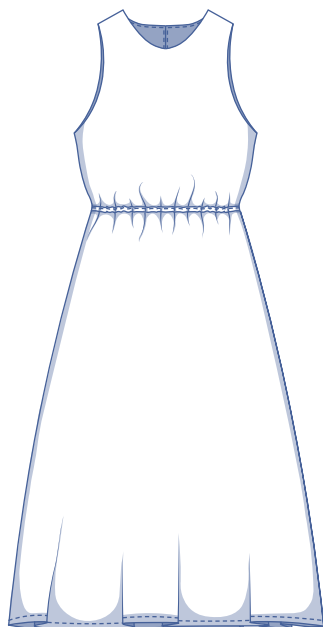
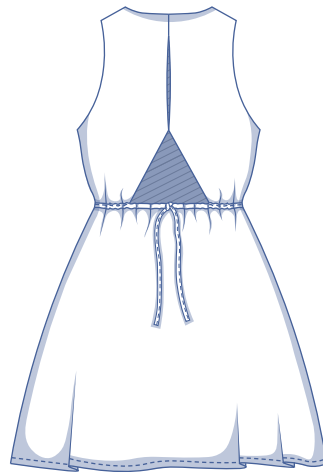
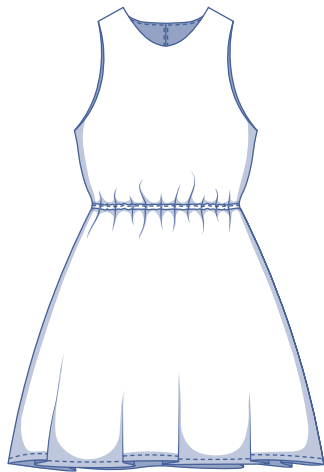


Jill by Fibre Mood



XS - XXXL

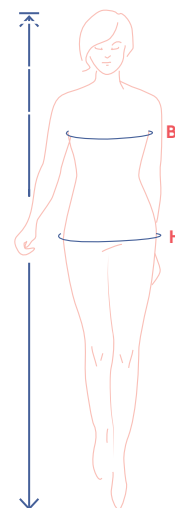
Enter the bliss of sunshiny sleeveless summers. Jill has got an elegant, round neckline and a strategically placed bra friendly cut-out at the back. The back fastens at the top with a rouleau loop and button. And it's up to you to decide how much waist definition you want - we have both elastic and ties! Which way was that garden party again?



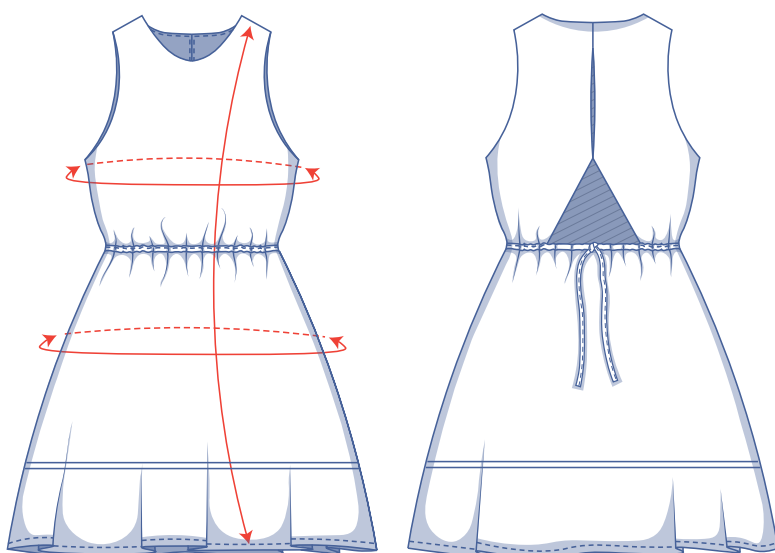
size chart (in inches)

size	XS		S		M		L		XL		XXL		XXXL		
	0	2	4	6	8	10	12	14	16	18	20	22	24	26	28
body height	5' 25"	5' 38"	5' 45"	5' 48"	5' 51"	5' 54"	5' 58"	5' 61"	5' 64"	5' 64"	5' 64"	5' 64"	5' 64"	5' 64"	5' 64"
B (bust)	29.9	31.5	33.1	34.6	36.2	37.8	39.4	40.9	43.3	45.7	48	50.4	52.8	55.1	57.5
H (hips)	33.9	35.4	37	38.2	39.4	40.6	41.7	42.9	45.3	47.2	49.2	51.2	53.1	55.1	57.1

Choose your size based on your **bust measurement**. If your hip measurements are wider than those in the size chart, check the hip measurements in the chart below to see if there's enough room or whether the pattern needs to be altered. It's easy to do. When tracing the pattern, simply trace from the line of one size to the line of the other.



pattern measurements (in inches)



== shorten or lengthen the pattern here

This chart's measurements are the pattern measurements based on the fabric type and serve as a reference. Ease has been added to the width measurements (in addition to the exact body measurements) for a more comfortable fit. Jill is designed to have a **relaxed cut**.

size	XS	S	M	L	XL	XXL	XXXL
length, short dress	36	36.5	36.9	37.8	38.8	39.8	40.5
length, long dress*	51	51.5	51.9	52.4	53.3	53.9	54.6
bust	32.6	35.7	38.9	42	46	50.7	55.4
hips	56.7	60.1	63.6	67.1	71.7	77	82.5

* To make the long dress, lengthen pattern pieces 3 and 4 until you have this total length (incl. the bodice) by extending the CF/CB lines and side seams.

Compare the stated lengths to the measured or desired lengths. **Lengthen** or **shorten** the dress by cutting the pattern pieces along the indicated double lines. Then either increase the distance between the cut pieces by the desired amount (to lengthen) or overlap the pieces (to shorten). Make sure that the CF and CB lines and the side seams are always straight.



IMPORTANT

Adjust the amount of fabric to be used based on these alterations.

notions



- Thread
- Button (Ø 1 1/16"): 1
- Iron-on interfacing: max. 26 inch
- Elastic cord* (Ø 1/8"): see table
- Cord/tie: 2 x 20"
(Optional: you could also use the pattern piece to make your own tie)
- Fabric: see table

elastic cord		XS	S	M	L	XL	XXL	XXXL
length	yd	0.50	0.54	0.63	0.69	0.81	0.95	1.09

* The elastic's stated measurements are merely indicative and depend on the type of elastic. Before permanently sewing the elastic to the casing, first pin the elastic all the way around to determine the precise length that you prefer.

fabric use, short dress		XS	S	M	L	XL	XXL	XXXL
fabric width 43"	yd	2 1/4	2 1/4	2 1/2	2 1/2	3	4	4 1/4
fabric width 55"	yd	2 1/4	2 1/4	2 1/4	2 1/4	2 1/2	2 1/2	2 3/4

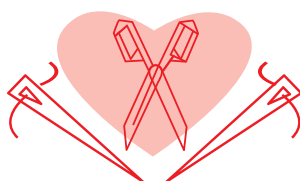
The corresponding fabric layout can be found on page 6 of these sewing instructions.

fabric use, long dress		XS	S	M	L	XL	XXL	XXXL
fabric width 43"	yd	3 1/4	3 1/4	3 1/2	3 1/2	3 3/4	4	4 1/4
fabric width 55"	yd	3	3	3	3	3 1/4	3 1/4	3 1/2

fabric advice When it comes to selecting a fabric for Jill, there are choices galore. Lyocell, poplin, chambray, linen, viscose (crepe), double gauze, broderie anglaise, and jacquard just a few. Fabric with a fluid drape will give you an understated look while more structured fabrics add a little more oomph.



Proud to be #Sewista



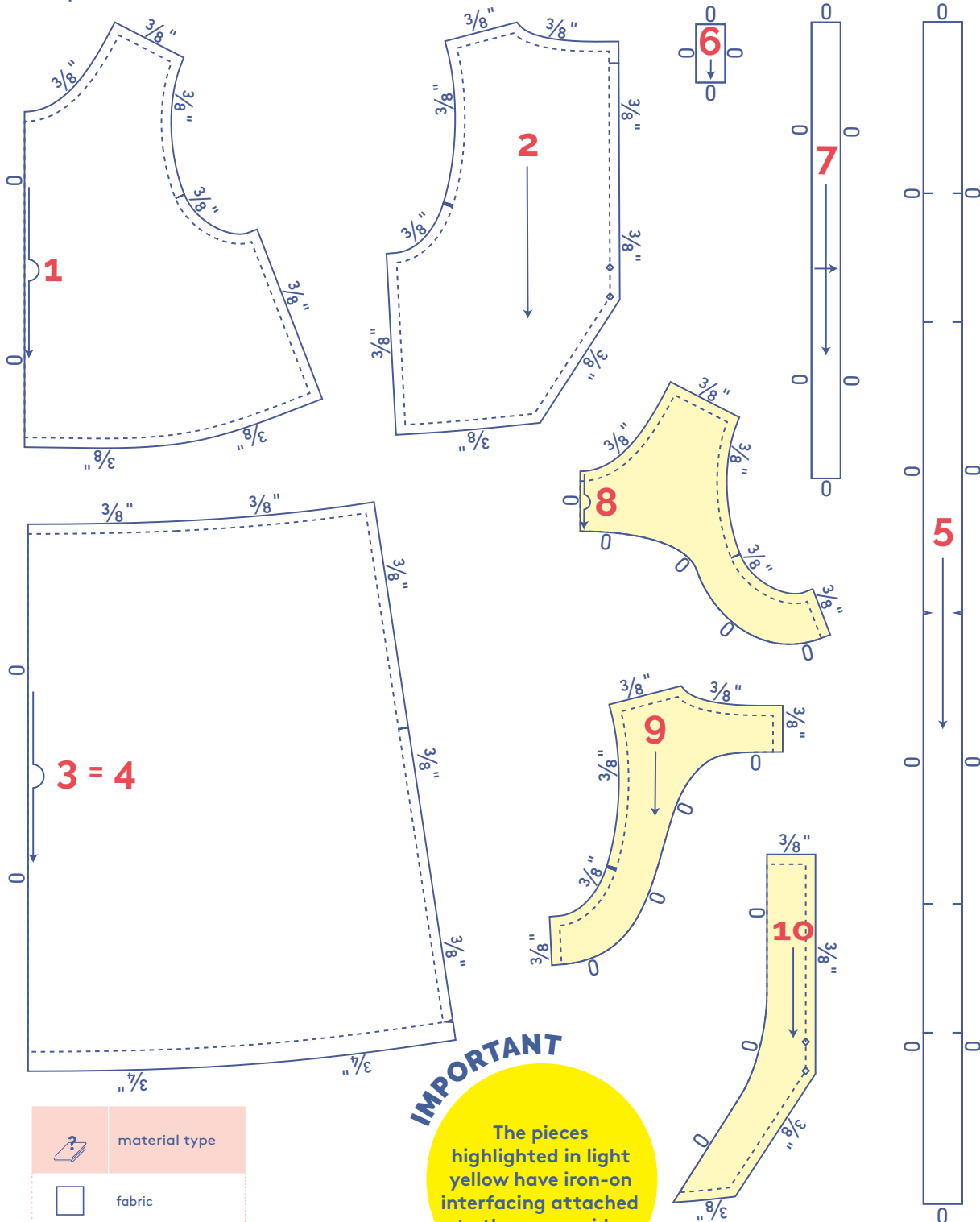
pattern pieces & seam allowances (in inches)




To sew the garment as described in the instructions, draw the illustrated seam allowances around the paper pattern pieces before cutting them out. If you are using a PDF pattern, the pattern can be printed with or without seam allowance. To find out more, watch the [video](#).

1. front: 1x on fabric fold
2. back: 2x
3. skirt front: 1x on fabric fold
4. skirt back: 1x on fabric fold
5. casing: 1x
6. loop: 1x
7. tie: 2x (optional)
8. facing front: 1x on fabric fold
9. facing back: 2x
10. facing CB: 2x

IMPORTANT

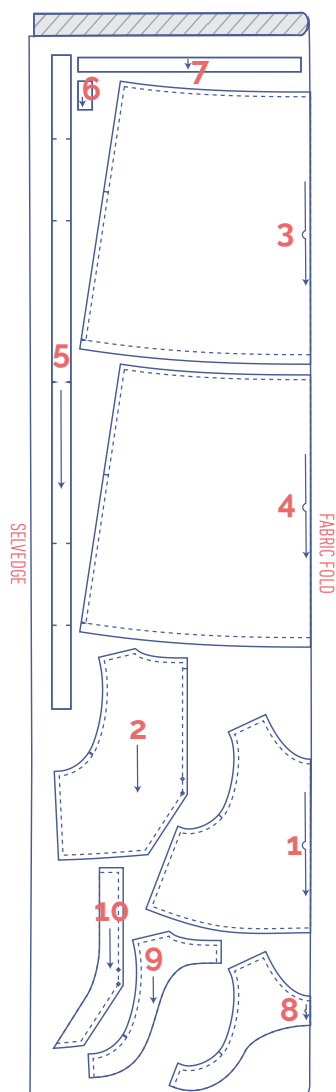
Pattern pieces 3 and 4 are the same.



	material type
	fabric
	iron-on interfacing

fabric layout – solid fabrics fabric width 43"

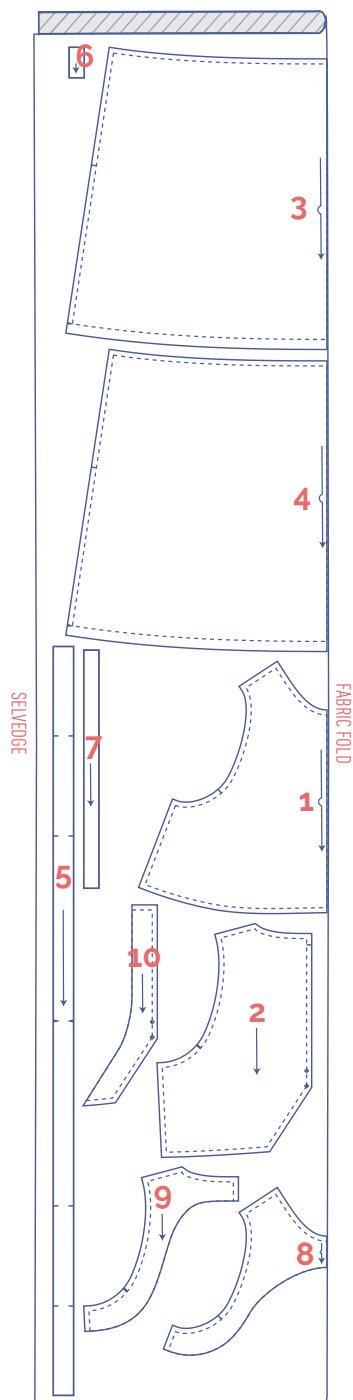
XS - L



IMPORTANT

You only need pattern pieces 5 and 6 once.

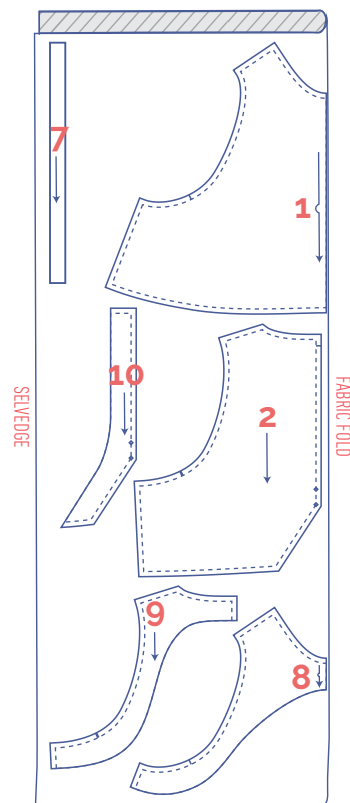
XL



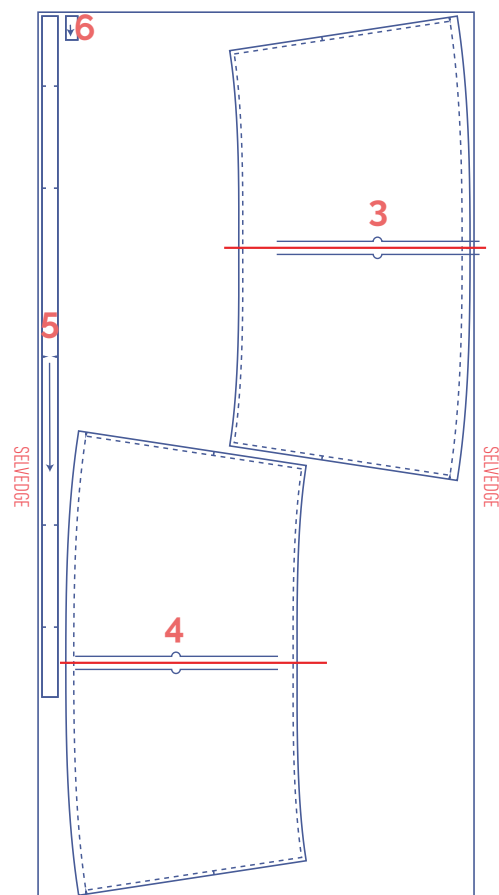
IMPORTANT

You only need pattern pieces 5 and 6 once.

XXL - XXXL



+



IMPORTANT

Pattern pieces 3 and 4 have been rotated at a 90° angle to fit the fabric width. If you are working with a patterned or napped fabric and you want everything in the same direction you may need some extra fabric.

marking pattern pieces



Notch the pattern paper and fabric at the following points



single notch



double notch



V-notch/fabric fold



Mark the following points with marking thread



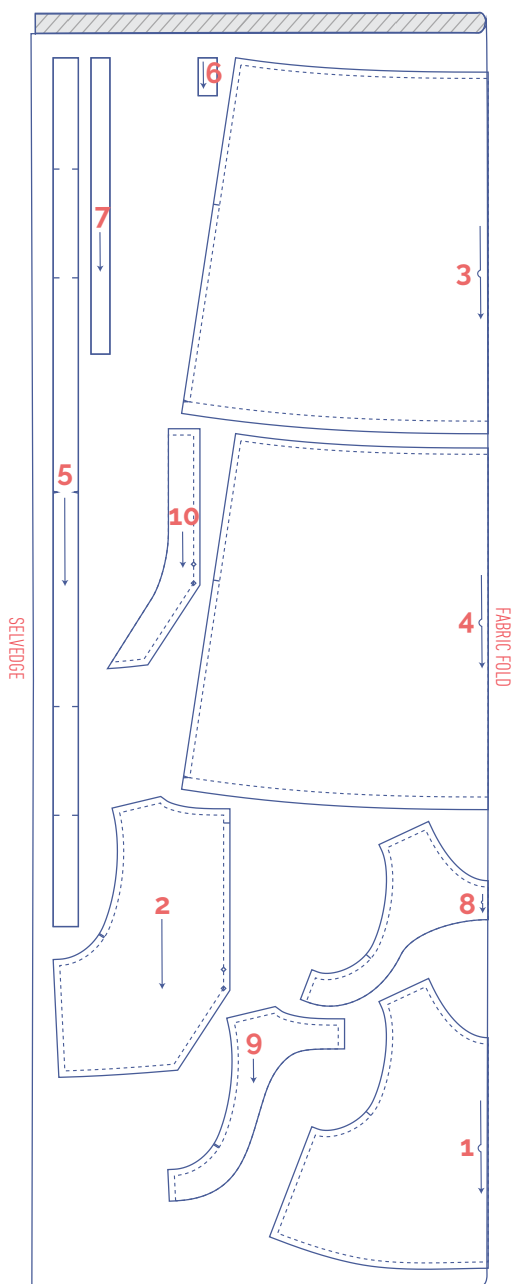
centre point

fabric layout – solid fabrics

fabric width 55"

XS - L

XL - XXXL



IMPORTANT

You only need pattern pieces 5 and 6 once.

marking pattern pieces



Notch the pattern paper and fabric at the following points

I single notch

II double notch

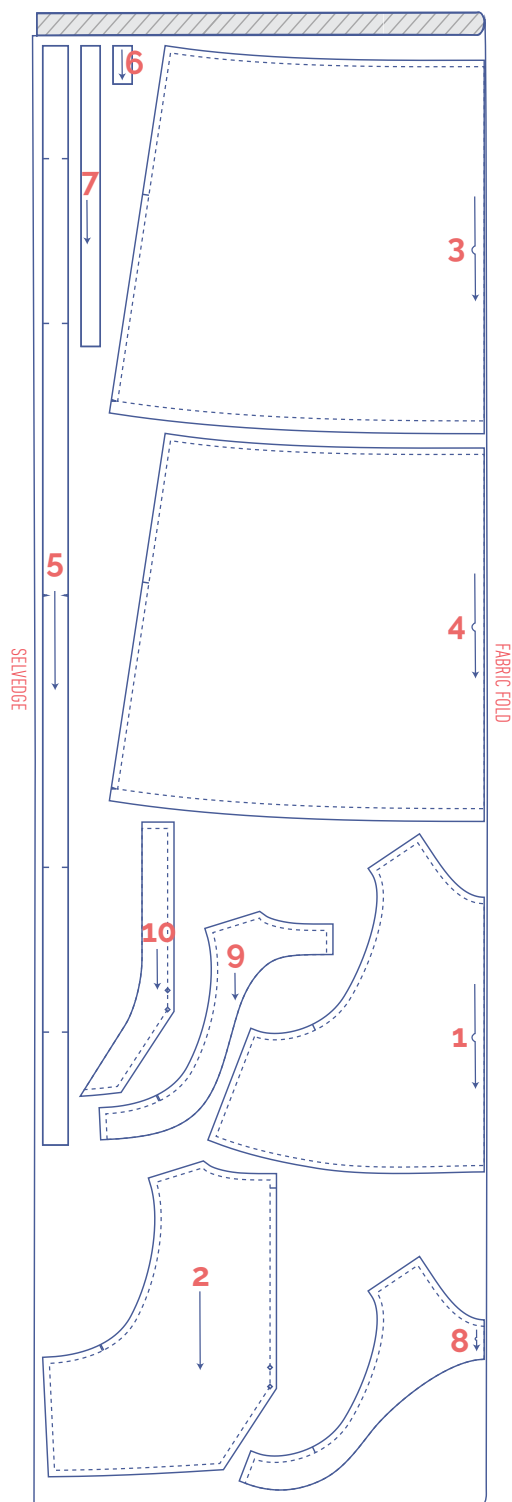
V V-notch/fabric fold



Mark the following points with marking thread



centre point



IMPORTANT

You only need pattern pieces 5 and 6 once.

sewing instructions



The method used to finish the seams depends on the fabric used.
The pieces are always sewn together with the right sides
of the fabric facing, unless stated otherwise.

F front

B back

CF centre front

CB centre back

RB right back

LB left back



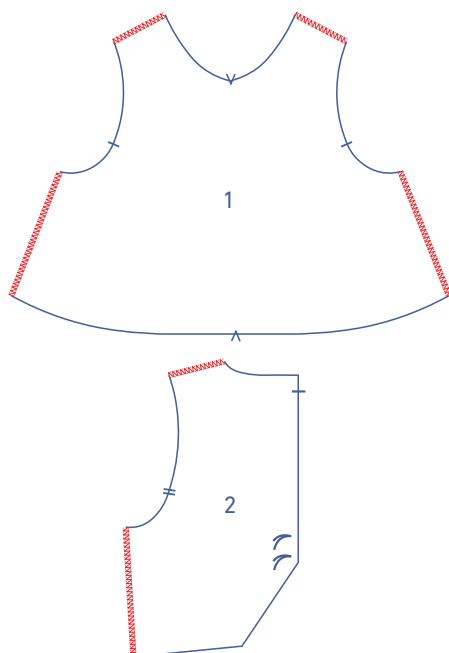
right side



wrong side

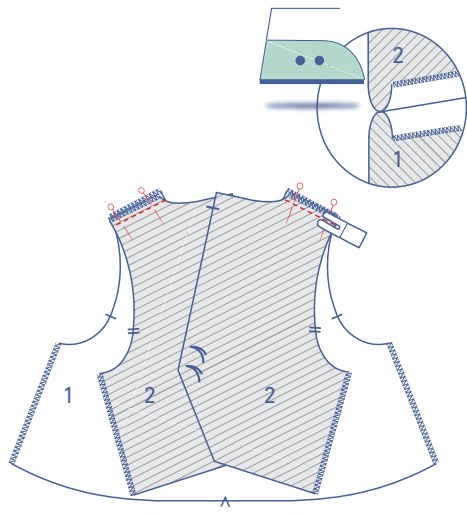


iron-on interfacing

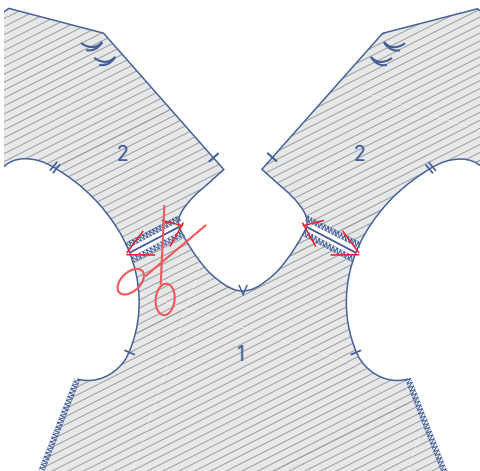


1

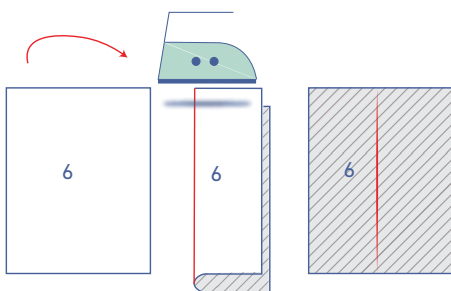
Finish the raw edges of the front (1) and back (2) with
overlock stitching where indicated.



Pin and sew the shoulder seams together. Press the seam allowance open.

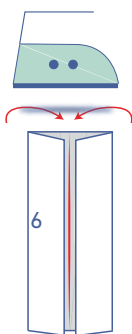


Diagonally clip the seam allowance at the tips to prevent bunching.

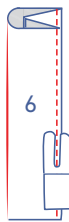
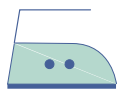


2

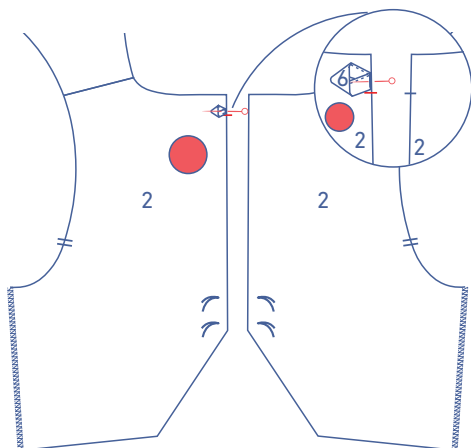
Press the loop (6) in half with the long ends together and the wrong sides of the fabric facing each other. Open back out.



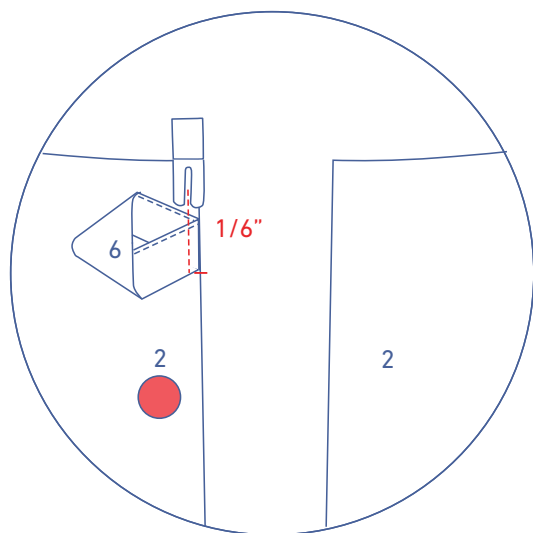
Press both raw edges in to meet the pressed centre line.



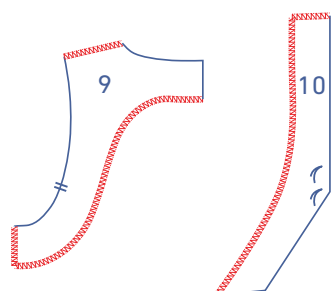
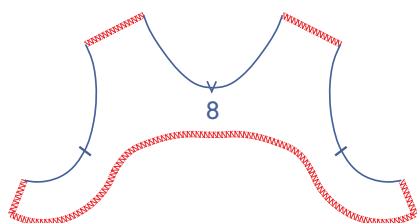
Fold the loop in half along the pressed centre line so that the wrong sides of the fabric are touching. Edgestitch into place.



Pin both raw edges of the loop to the edge of the LB indicated. The bottom of the loop should match the notch as shown.

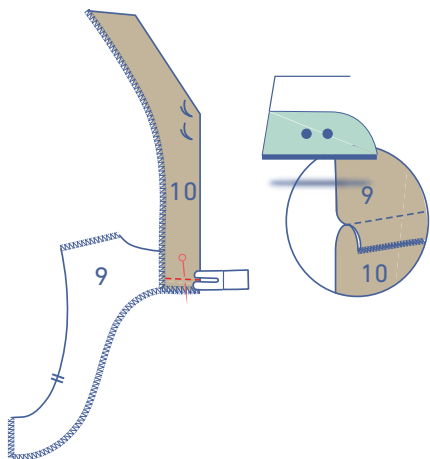


Sew into place at 1/6".

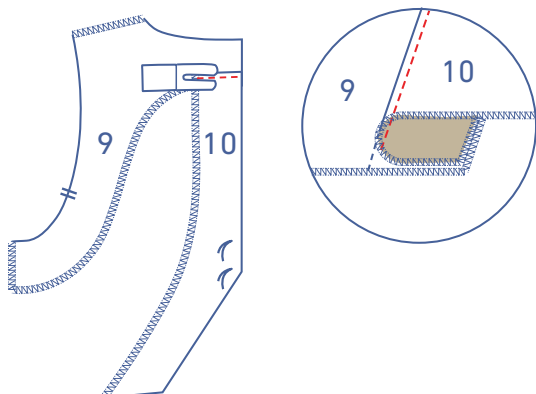


3

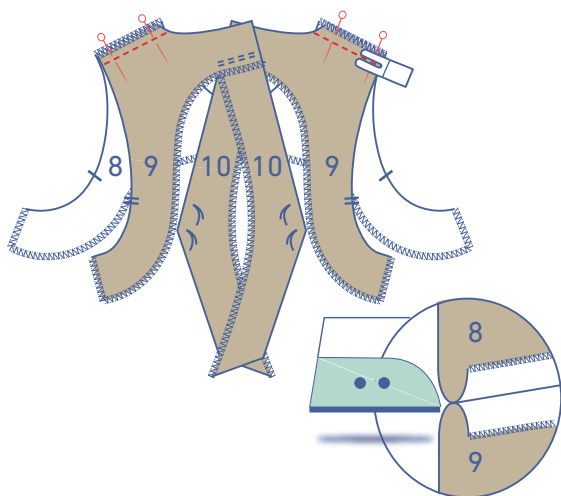
Finish the shoulder, side seams, and bottom of the facing front (8) and facing back (9) with overlock stitching. Finish the raw edges of the facing CB (10) with overlock stitching where indicated.



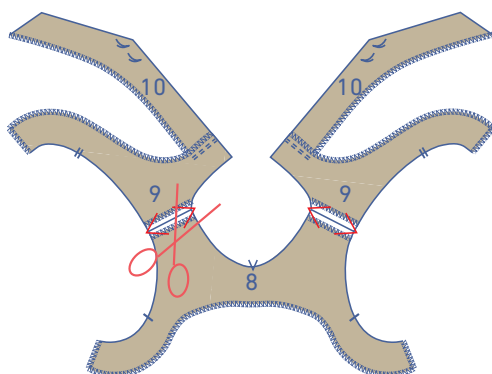
Pin and sew the facing CB and facing back together. Press the seam allowance towards the facing CB piece.



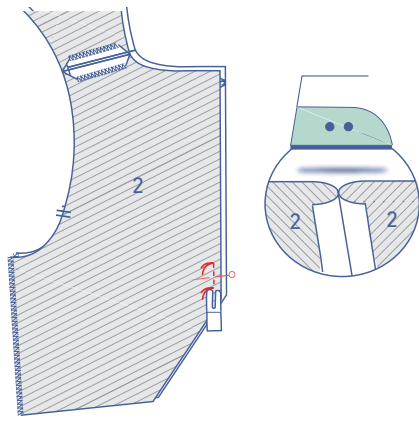
Sew the facing CB next to the seam, anchoring through all layers (facing CB + underlying seam allowance).



Sew the shoulder seams of the front and back facings. Press the seam allowance open.

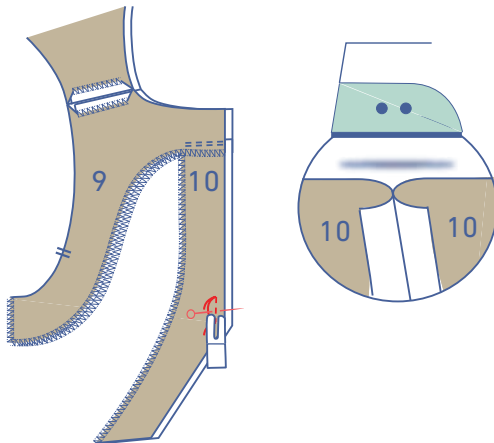


Trim the seam allowance diagonally at the tips to prevent the fabric from bunching.

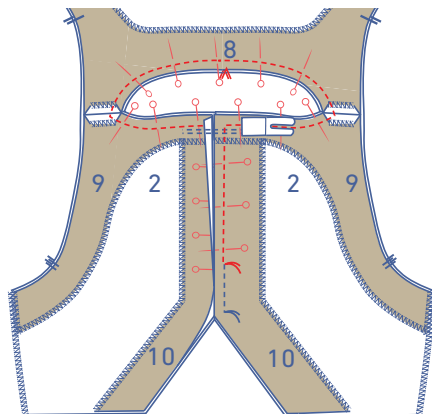


4

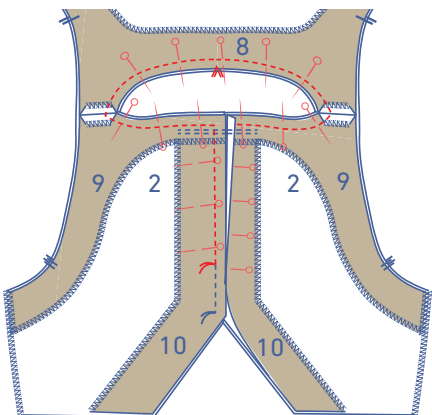
Pin and sew the CB seam of the back between the marking threads where indicated. Press the seam allowance open.

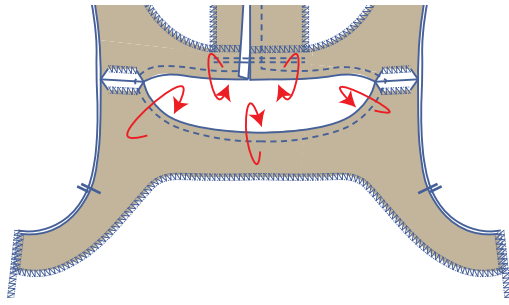


Pin and sew the CB seam of the facing between the marking threads where indicated. Press the seam allowance open.

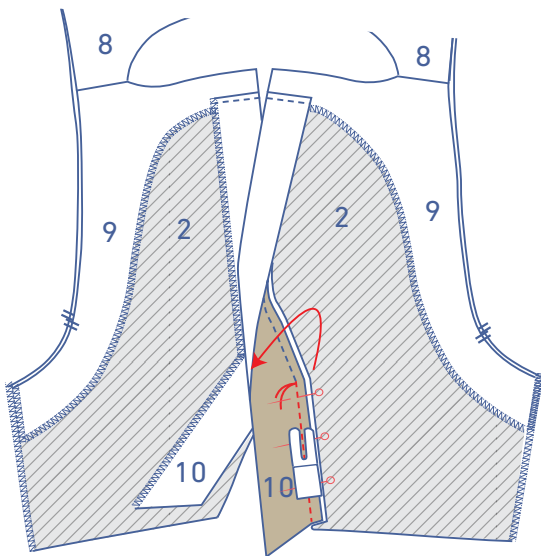
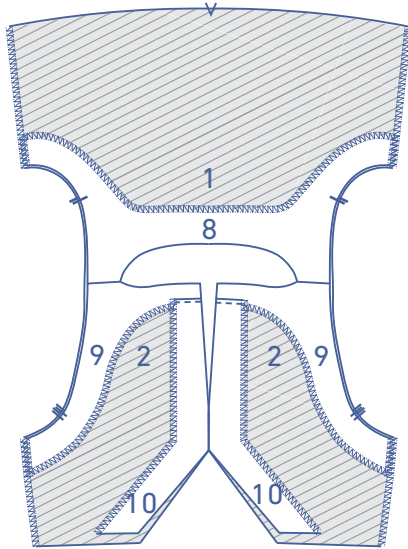


Pin the neckline and CB seam of the facing to the dress, matching the markings. Sew the facing to the dress, starting with the top marking threads and working parallel to the shape of the CB and the neckline up to the next set of marking threads.

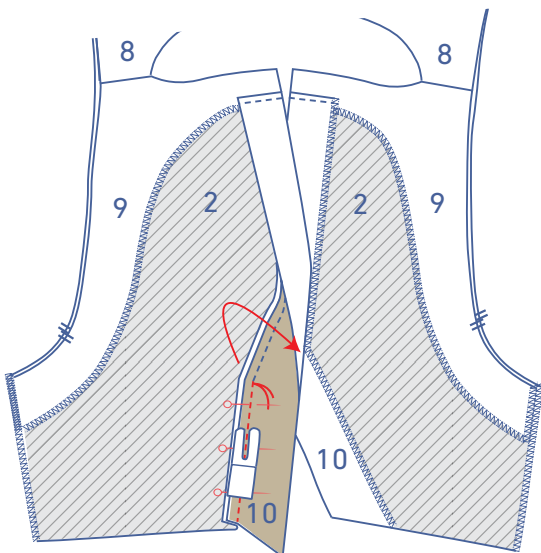




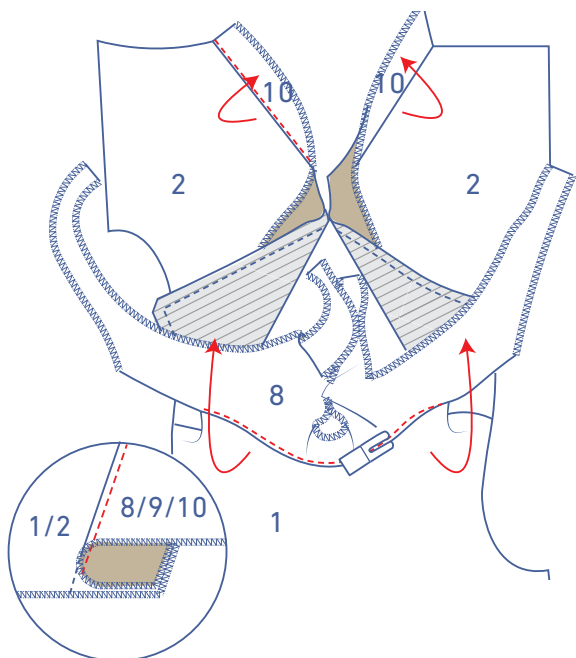
Fold the facing towards the wrong side.



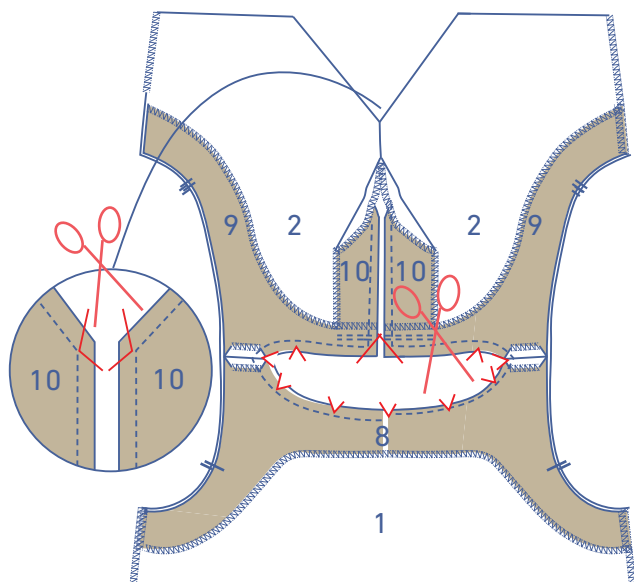
Now, fold the seam allowances of the facing and the dress together with the right sides facing. Sew the facing to the dress between the bottom marking threads and the bodice edge.



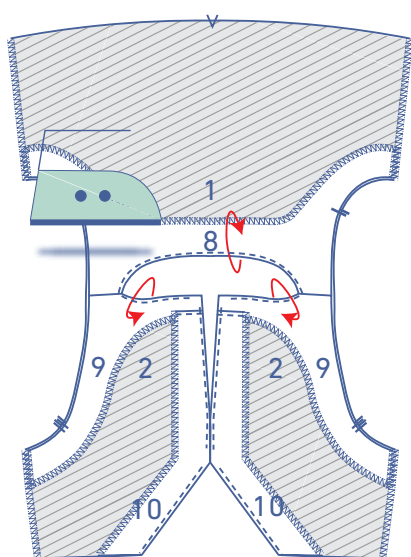
Repeat the previous step to join the other side.



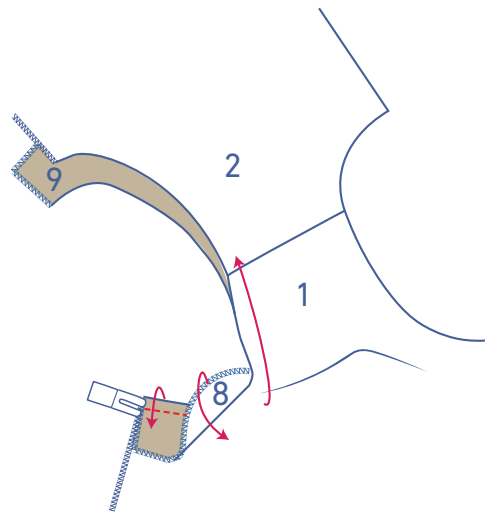
Fold the facing and the seam allowance over towards the facing. Sew the facing right next to the seam, anchoring through all layers of fabric (facing + underlying seam allowance). It will not be possible to sew the entire edge, but sew as far as you can.



Fold the facing back so you have the facing and bodice right sides together. Then notch the seam allowance of the CB seam and neckline in several places so the neckline will lie flat.

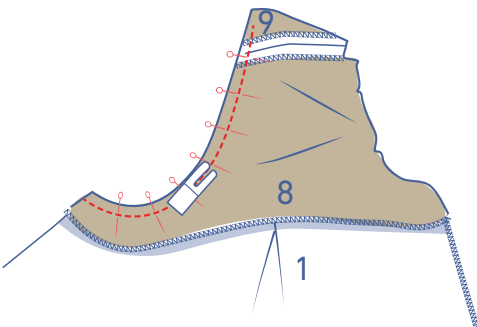


Turn the facing neatly back over to the wrong side.

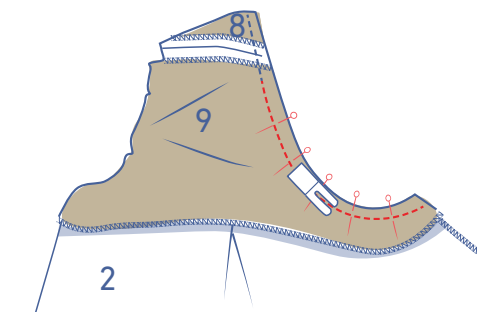


5

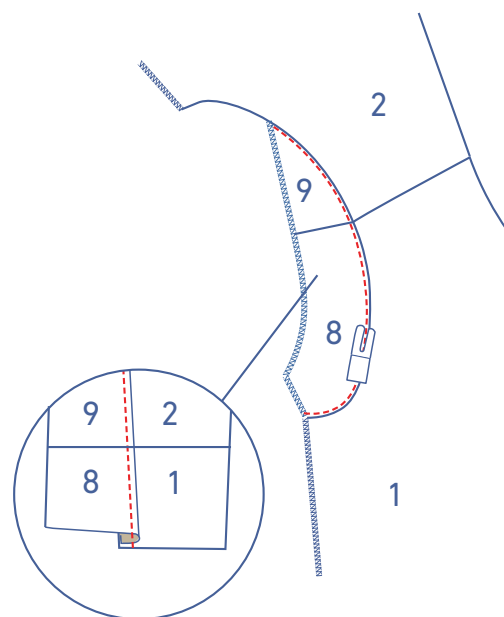
Now, join together the facing to the main body. Fold the seam allowances of the armhole facing and the dress armhole together at the bottom of the armhole with the right sides facing.



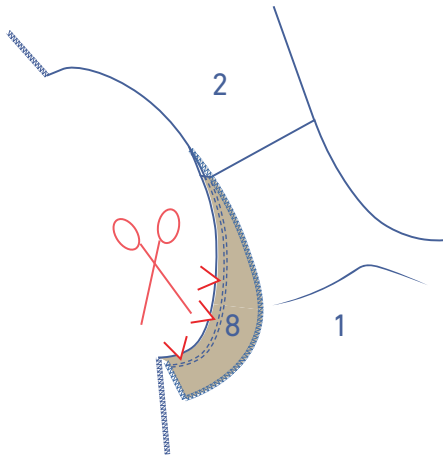
Start from the side seam and sew both armholes together. Do this in $\frac{3}{4}$ " increments: match the raw edges and sew approx. $\frac{3}{4}$ ". Line up the raw edges again and sew another $\frac{3}{4}$ " increment, etc. Continue until you've sewn just past the shoulder seam.



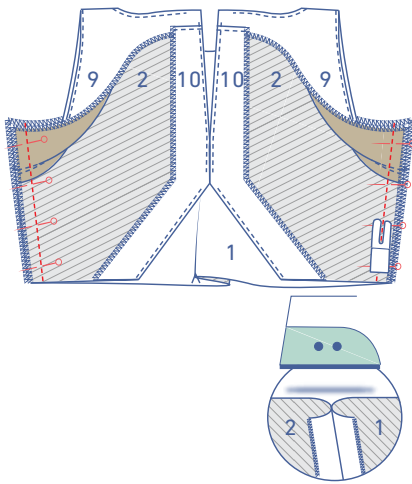
Now repeat for the back. Fold the seam allowance of the armhole facing and dress armhole together, past the shoulder seam. Sew from the shoulder to the bottom of the armhole (starting from the end of your previous stitching).



Fold the facing and the seam allowance over towards the facing. Sew the facing right next to the seam, anchoring through all layers of fabric (facing + underlying seam allowance). Always sew off as far as you can. Stop sewing and start again along the other side of the armhole. This may seem like rather fiddly work, but have faith. You're on the right track as long as you follow these instructions.

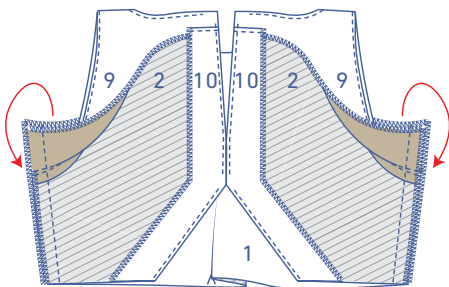


Fold the facing over and notch the armhole's seam allowance in several places to create a nice clean curve. Without these notches, the seam may tear under stress.

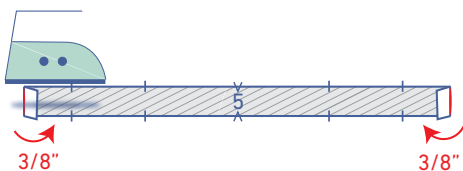
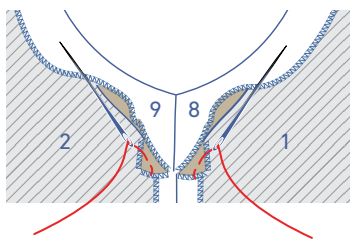


6

Open the facing pieces out (up) and pin and sew the side seams together. Press the seam allowance open.

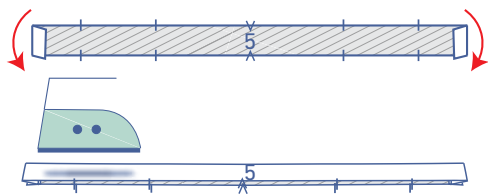


Fold the facing back down. Hand sew or stitch the side seams of the facing to the side seams of the dress to secure.

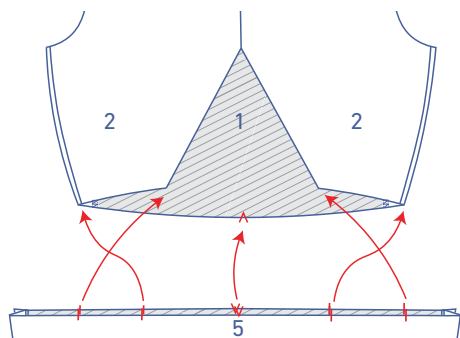


7

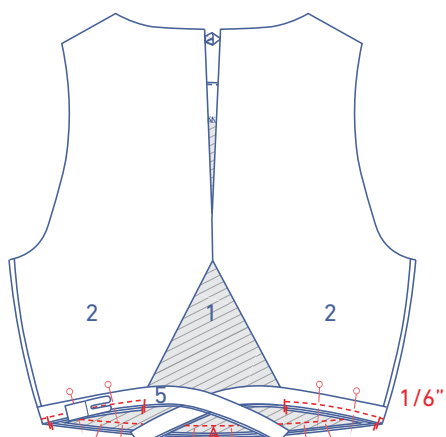
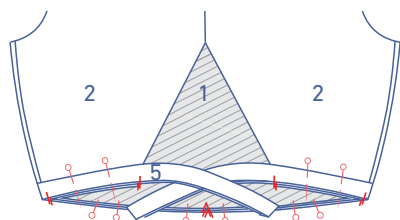
Press $\frac{3}{8}$ " of the short ends of the casing (5) towards the wrong side.



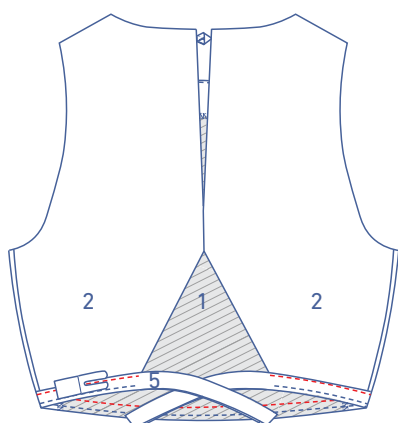
Press the casing in half with the long ends together and the wrong sides of the fabric facing each other.



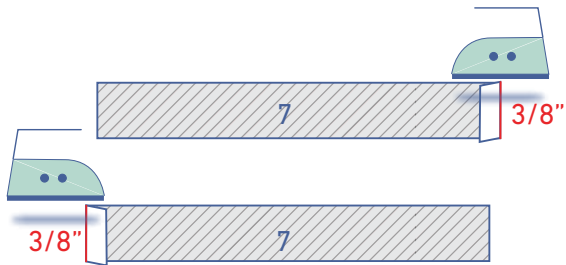
Slide the waistband over the top of the bodice. Pin the raw edges of the casing to the bottom of the bodice, making sure the seams and notches match.



Sew into place at $\frac{1}{6}$ ".

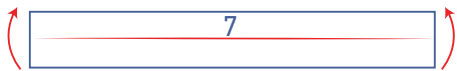
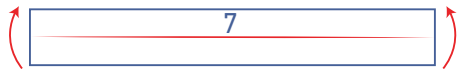


Sew the casing to the bodice right next to the edge.



8

For each tie (7), press $\frac{3}{8}$ " of one short end towards the wrong side.



Press the ties in half with the long ends together and the wrong sides of the fabric facing each other. Open back out.



Press both raw edges in to the pressed centre line.



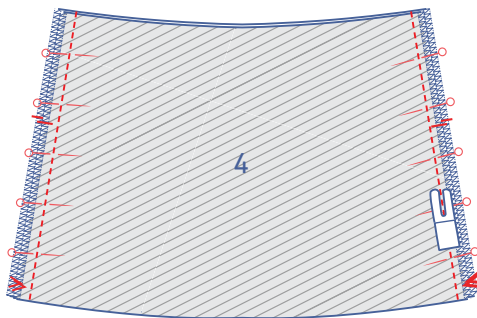
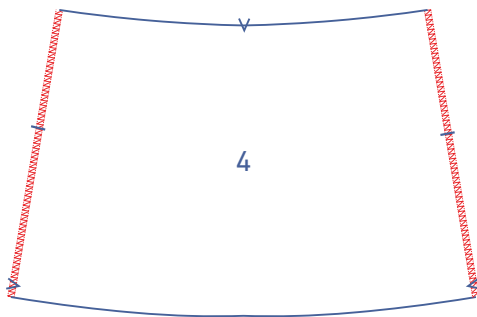
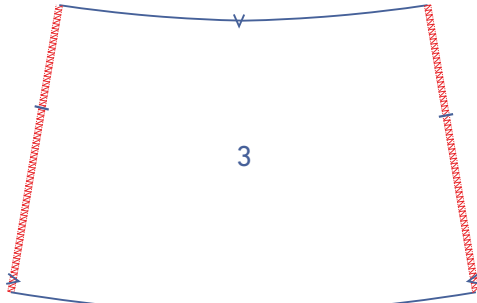
Fold the ties in half along the pressed centre line so that the wrong sides of the fabric are touching.



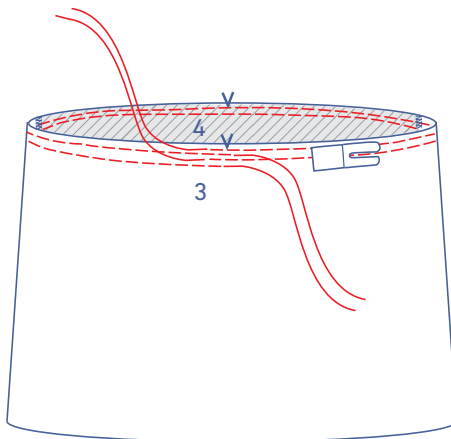
Sew each all the way around, right next to the edge.

9

Finish the sides of the skirt with overlock stitching.

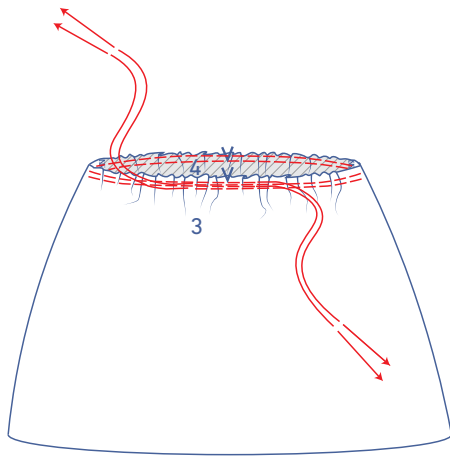


Pin and sew the side seams. Press the seam allowance open.

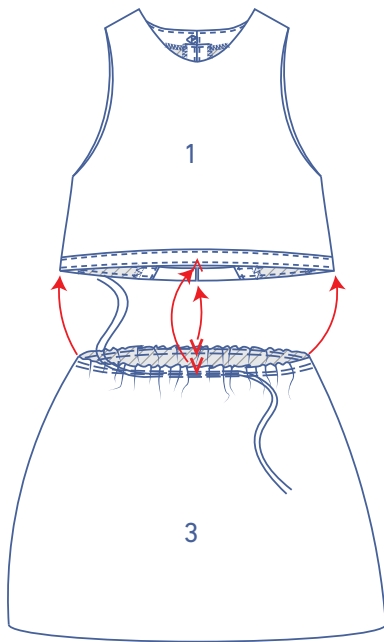


10

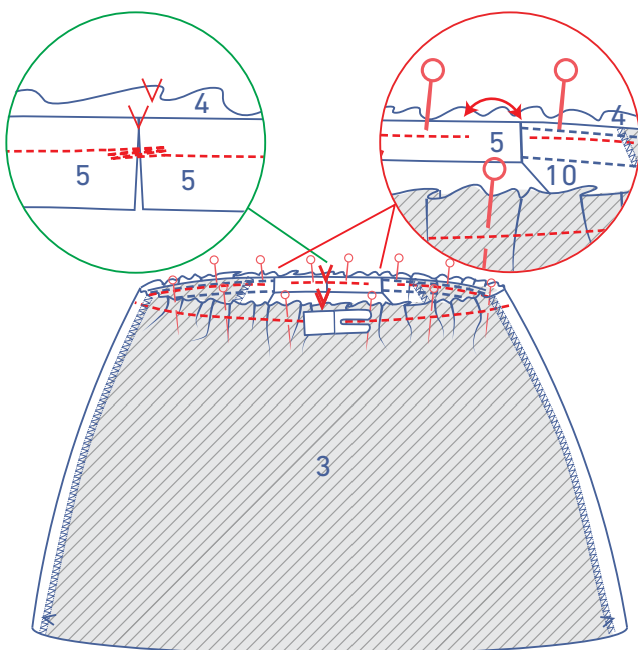
Sew the top of the skirt with two parallel lines of topstitching, using a long stitch length at a low thread tension. Leave a length of thread at the start and end of your stitching.



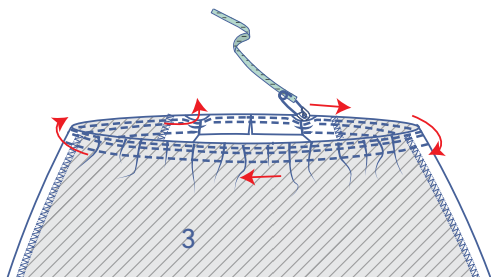
Gently tug the ends of the threads to gather the fabric.



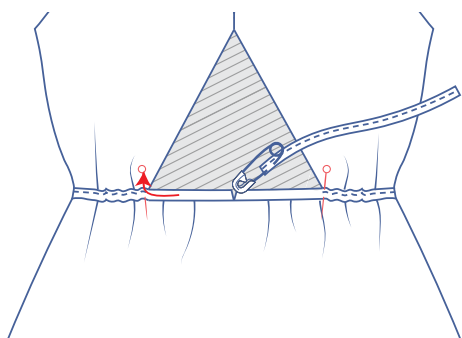
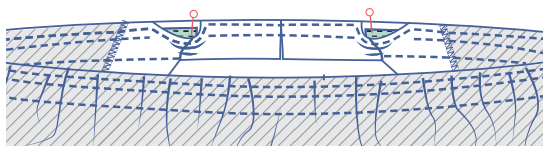
Slide the skirt over the bodice right sides together. Pin the skirt to the bottom of the bodice piece, distributing the gathers until the markings match.



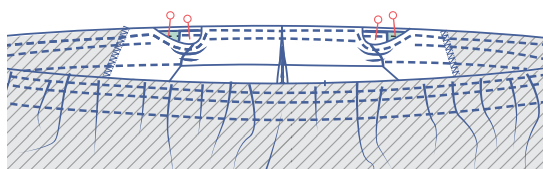
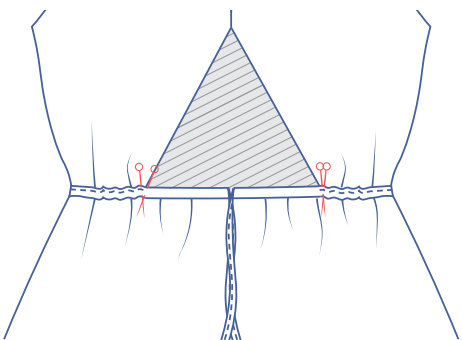
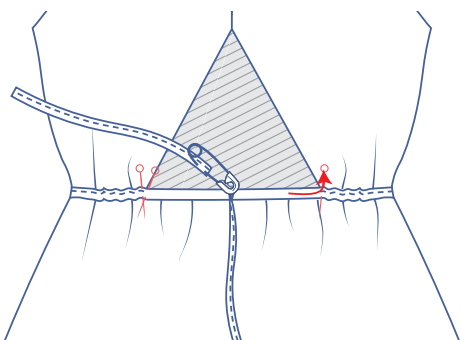
Sew together, leaving an opening at the finished edges of the back through which to thread elastic cord or a narrow piece of elastic later. Sew and back tack a few times at the CB to stabilise the stitching there.

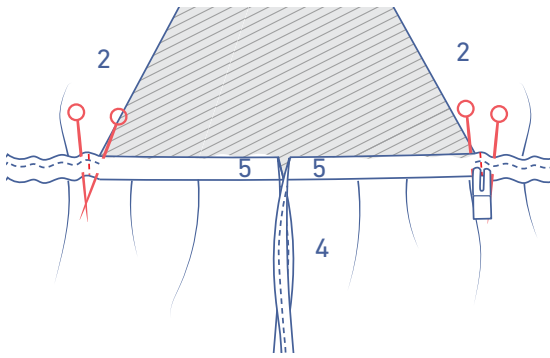


Thread the elastic cord or narrow piece of elastic through the opening in the finished edges of the back and the casing and pin temporarily into place.

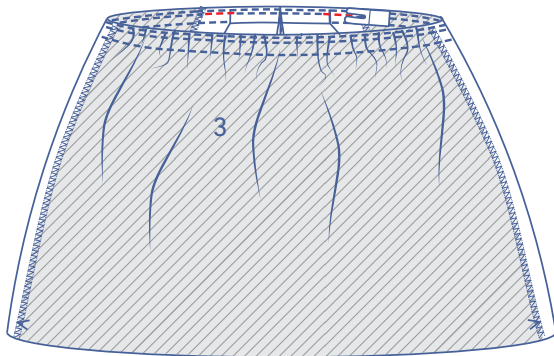


Then, thread the ties through the casing from the CB to the finished edges of the back.

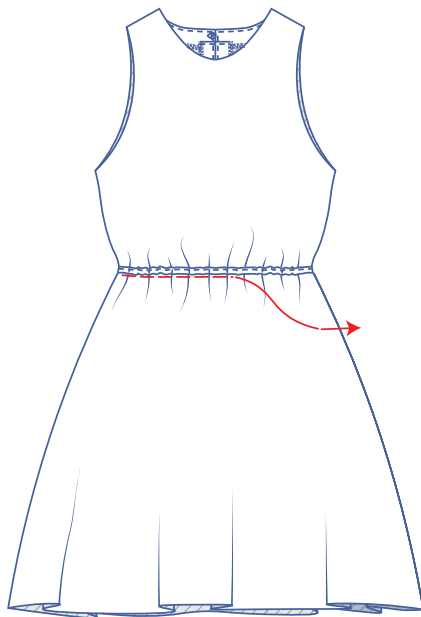




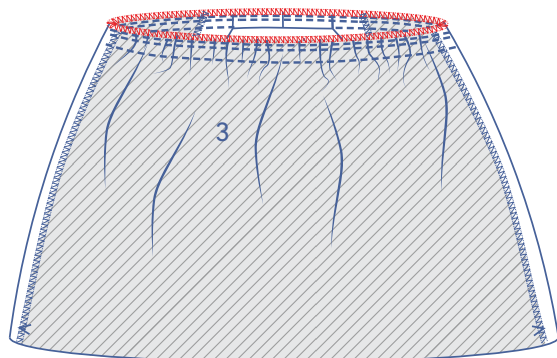
Sew the elastic cord/narrow piece of elastic *and* the tie into place by sewing the casing vertically at the finished edges of the back.



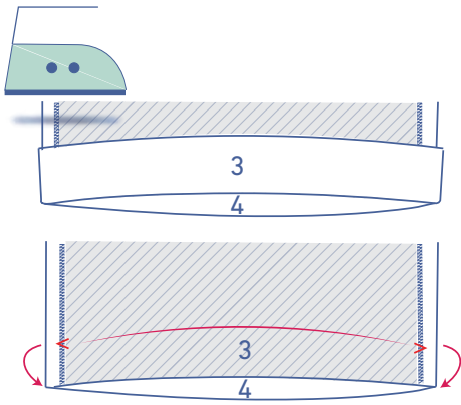
Sew the gaps in the lapped seam of the skirt and bodice closed.



Remove the gathering threads.

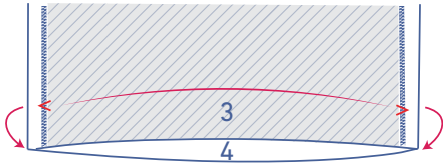


Finish the raw edges with overlock stitching.

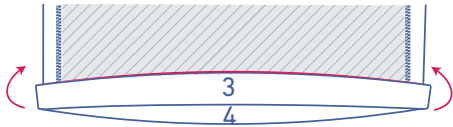
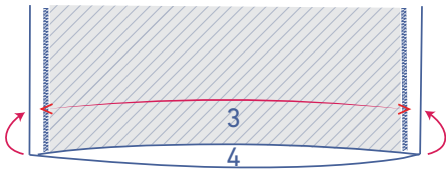


11

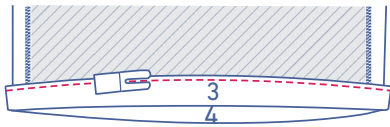
Press the hem allowance over and open back out.



Fold the raw edge to the pressed fold line and then fold over again.



Edgestitch into place.



12

Sew the button to the RB.

