



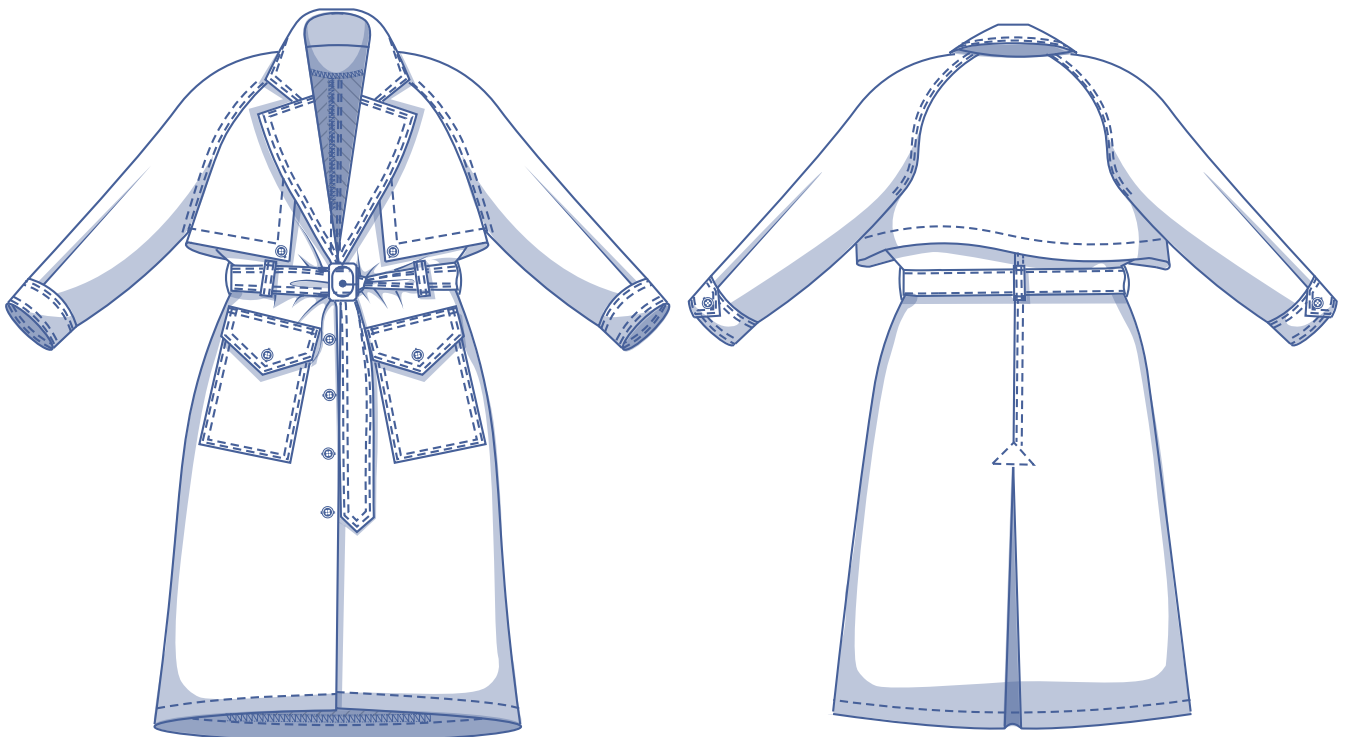
Drea by Fibre ood

Drea by Fibre ⚡ood



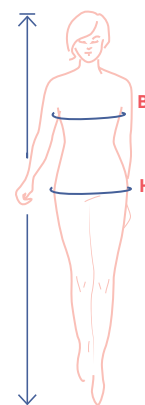
XS - XXXL

Singing in the rain, just singing in the rain. Drea makes every dreary day better. But first, some puzzling and patience await you. There's a reason it's a coat worthy of Sherlock Holmes... And admit it, a trench coat of your own looks really nice on your sewista CV. Here we go: storm flaps in front and back, belted waist, collar and lapels, graceful back split, and patch pockets. You can do this.



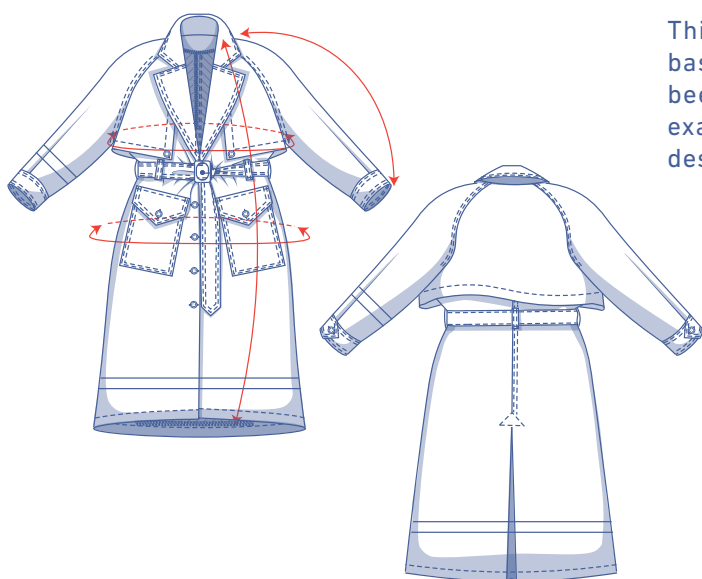
size chart (in inches)

size	XS		S		M		L		XL		XXL		XXXL		
	0	2	4	6	8	10	12	14	16	18	20	22	24	26	28
body height	5' 25"	5' 38"	5' 45"	5' 48"	5' 51"	5' 54"	5' 58"	5' 61"	5' 64"	5' 64"	5' 64"	5' 64"	5' 64"	5' 64"	5' 64"
B (bust)	29.9	31.5	33.1	34.6	36.2	37.8	39.4	40.9	43.3	45.7	48	50.4	52.8	55.1	57.5
H (hips)	33.9	35.4	37	38.2	39.4	40.6	41.7	42.9	45.3	47.2	49.2	51.2	53.1	55.1	57.1



Choose your size based on the **bust measurement**. If your hip measurements are wider than those in the size chart, check the hip measurements in the chart below to see if there's enough room or whether the pattern needs to be altered. It's easy to do. When tracing the pattern, simply trace from the line of one size to the line of the other.

pattern measurements (in inches)



This chart's measurements are the pattern measurements based on the fabric type and serve as a reference. Ease has been added to the width measurements (in addition to the exact body measurements) for a more **comfortable fit**. Drea is designed to have a relaxed cut.

— shorten or lengthen the pattern here

size	XS	S	M	L	XL	XXL	XXXL
length	49.1	49.5	49.8	50.2	51.3	51.8	52.4
sleeve length*	28.3	28.9	29.4	30	30.6	31.2	31.8
bust	40.7	43.9	47	50.2	54.1	58.8	63.5
hips	44.1	47.3	49.6	52	55.5	60.2	65

* Including the cuff.

Compare the stated lengths to the measured or desired lengths. **Lengthen** or **shorten** the coat and/or sleeves by cutting the pattern pieces at the indicated double lines. Then either increase the distance between the cut pieces by the desired amount (to lengthen) or overlap the pieces (to shorten). Make sure that the CF and CB lines and the side seams are always straight.

IMPORTANT

Adjust the amount of fabric to be used based on these alterations.

notions



- Thread
- Iron-on interfacing: max. 1 3/4 yd
- (Jeans) buttons (Ø 1 1/16"): 11
- Buckle (2.4"): 1
- Eyelets (Ø 5/32"): 5
- Fabric: see table

fabric use		XS	S	M	L	XL	XXL	XXXL
fabric width 43"	yd	5 ½	5 ½	5 ¾	6 ¾	7	7	7 ¼
fabric width 55"	yd	4 ¼	4 ¼	4 ½	4 ¾	5 ¼	5 ¼	5 ½

The corresponding fabric layout can be found on page 6 of these sewing instructions.

fabric advice



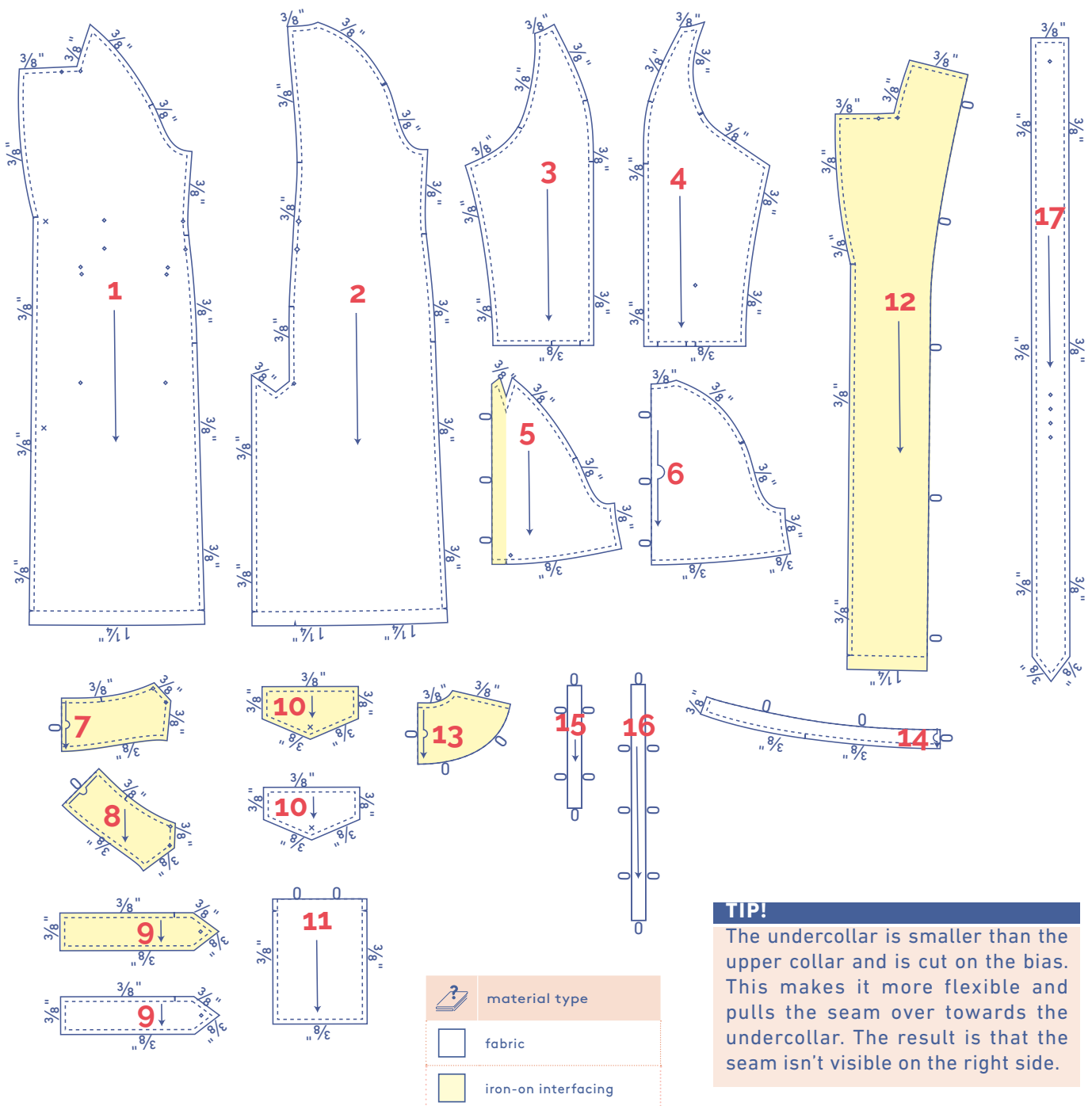
A slightly stiffer fabric gives the best results. Go classic British with gabardine or twill cotton, or for a contemporary metamorphosis choose nylon or denim.

Sew
much fabric,
sew
little time...

pattern pieces & seam allowances (in inches)

To sew the garment as described in the instructions, draw the illustrated seam allowances around the paper pattern pieces before cutting them out. If you are using a PDF pattern, the pattern can be printed with or without seam allowances. Watch the [video](#) to find out more.

1. front: 2x
2. back: 2x
3. sleeve front: 2x
4. sleeve back: 2x
5. front storm flap: 2x
6. back storm flap: 1x on fabric fold
7. upper collar: 1x on fabric fold
8. undercollar: 1x on fabric fold
9. cuff: 4x
10. flap: 4x
11. pocket: 2x
12. facing front: 2x
13. facing back: 1x on fabric fold
14. hem facing: 1x on fabric fold
15. sleeve binding: 2x
16. belt loops: 1x
17. belt: 2x

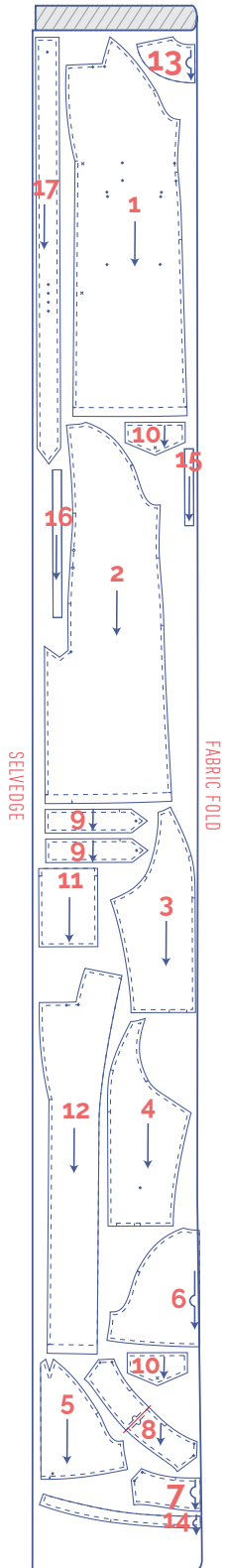


TIP!

The undercollar is smaller than the upper collar and is cut on the bias. This makes it more flexible and pulls the seam over towards the undercollar. The result is that the seam isn't visible on the right side.

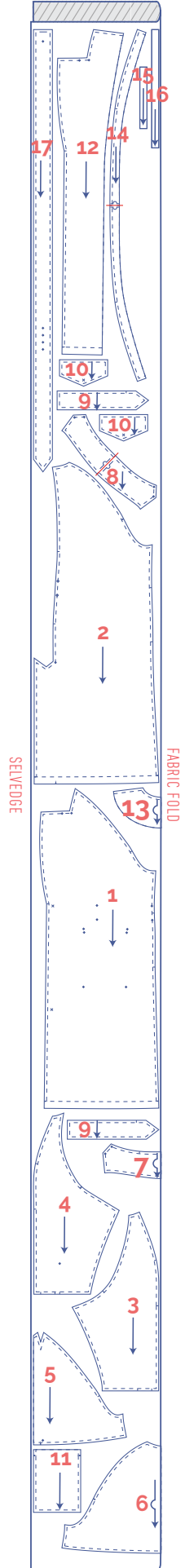
fabric layout for solid fabrics fabric width 43"

XS - M



Important!
You only need pattern pieces 8 and 16 once.

L - XXXL



Important!

You only need pattern pieces 8, 14 and 16 once. Pattern piece 14 has been rotated at a 90° angle to fit the fabric width. Be aware of this if you are working with patterned or napped fabric.

marking pattern pieces

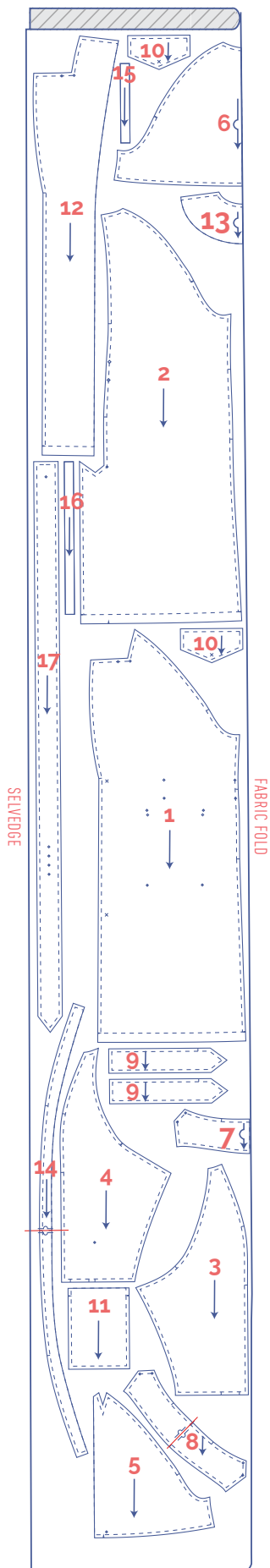
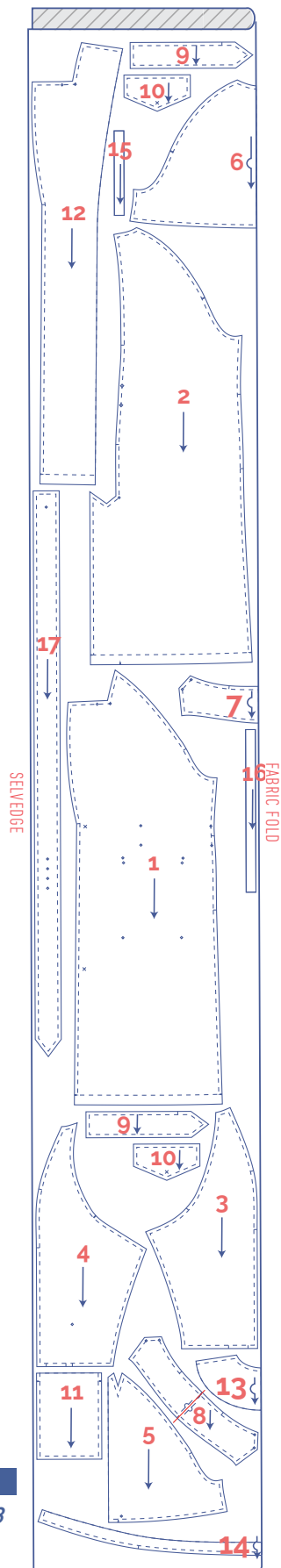
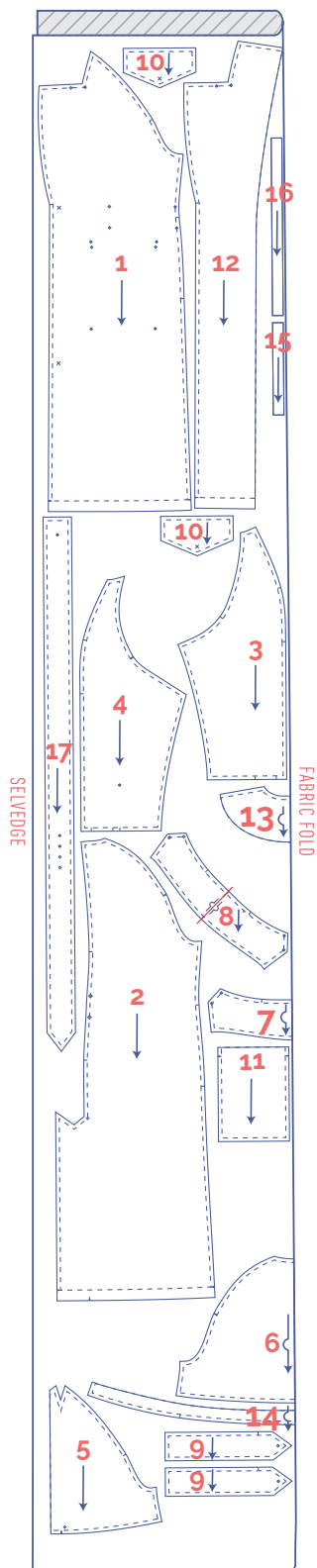
	notch the paper pattern and fabric at the following points
	single notch
	double notch
∨	V-notch/fabric fold
	mark the following centre points with marking thread
	centre point
	buttons

**fabric layout for solid fabrics
fabric width 55"**

XS - L

XL - XXL

XXXL



Important!

You only need pattern pieces 8, 14 and 16 once. Pattern piece 14 has been rotated at a 90° angle to fit the fabric width. Be aware of this if you are working with patterned or napped fabric.

Important!

You only need pattern pieces 8 and 16 once.

sewing instructions



The method used to finish sewing the garment depends on the fabric used. The pieces are always sewn together with the right sides of the fabric facing, unless stated otherwise.

F front

B back

RF right front 

LF left front 

CF centre front

CB centre back

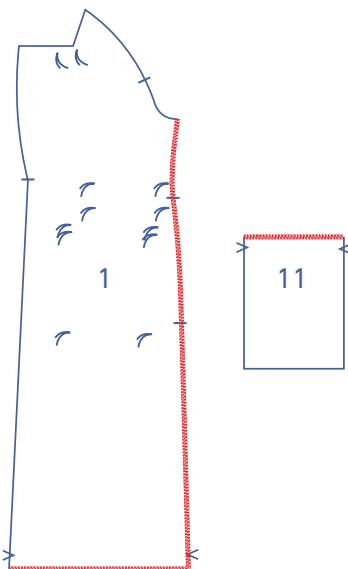
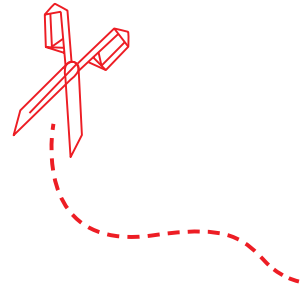
RB right back 

LB left back 

 right side

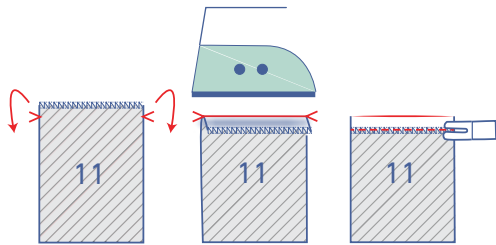
 wrong side

 iron-on interfacing

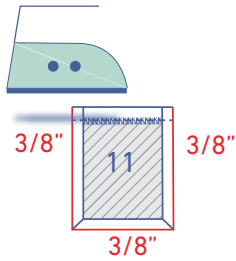


1

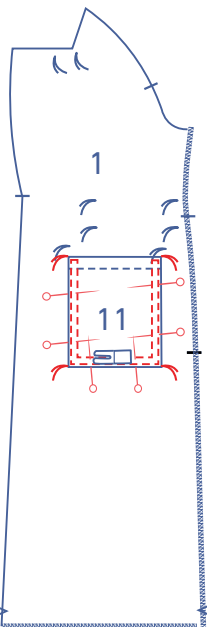
Finish the raw edges of the front (1) and the top of the pocket (11) with overlock stitching where indicated.



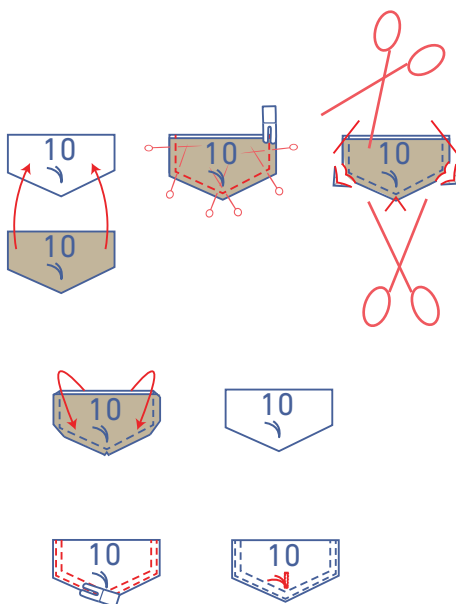
Press the top of the pocket over at the V-notches. Sew into place.



Press the other ends $\frac{3}{8}$ " over towards the wrong side.



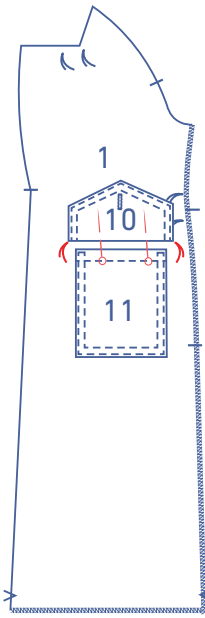
Pin the pocket to the front where indicated. Edgestitch into place. Sew extra topstitching at presser foot width next to the first row of stitching. Finish with horizontal reinforcement stitching at the top corners of the pocket between the two lines of topstitching.



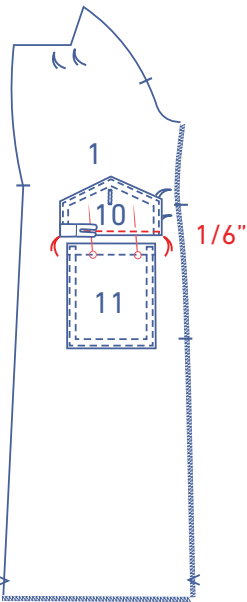
Pin 2 of the flaps (10) (one part with and the other without iron-on interfacing) right sides together and sew where indicated. Trim seam allowance at the corners.

Turn the flap the right way out.

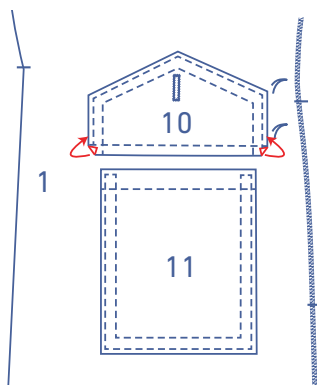
Sew two lines of parallel topstitching right next to the edge. Make a vertical buttonhole where indicated.



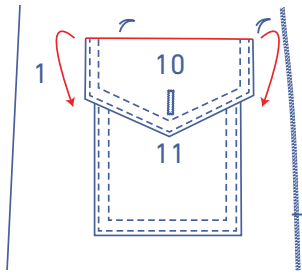
Match the raw edges of the flap to the highlighted marking threads. The flap is pointing up.



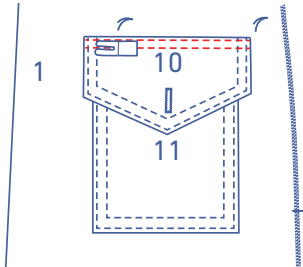
Sew into place at 1/6" from the raw edge.



Fold the corners in.



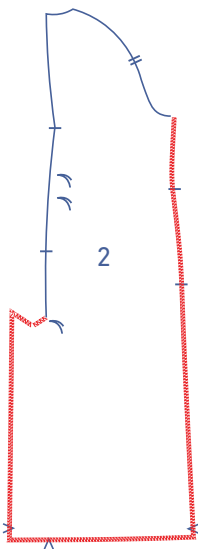
Fold the flap down.



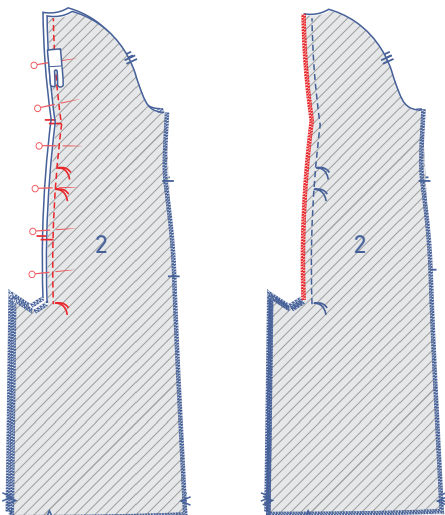
Edgestitch into place. Sew extra topstitching at presser foot width next to the first row of stitching.

2

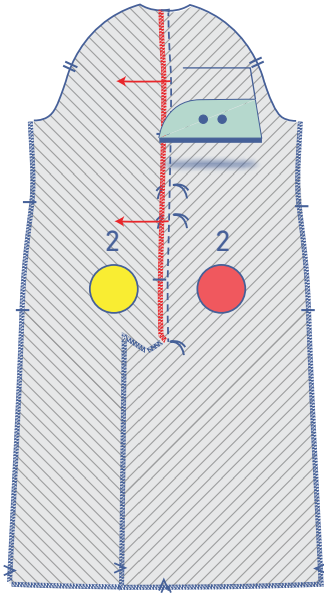
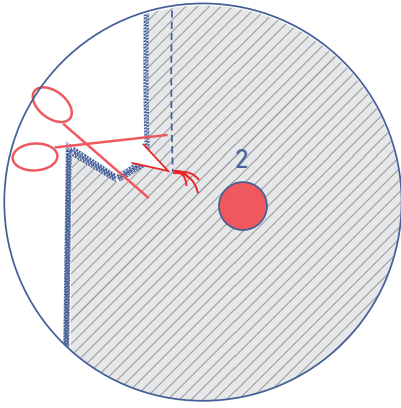
Finish the raw edges of the back (2) with overlock stitching where indicated.



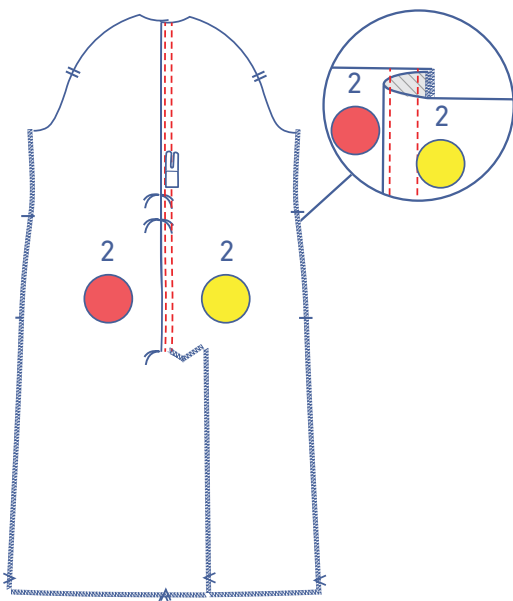
Pin and sew the CB seam down to the bottom marking thread. Finish the raw edges together with overlock stitching.



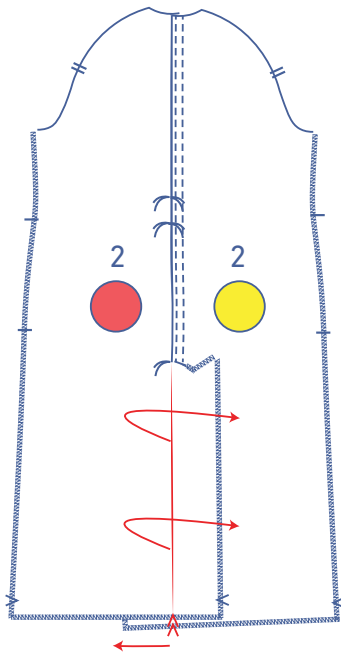
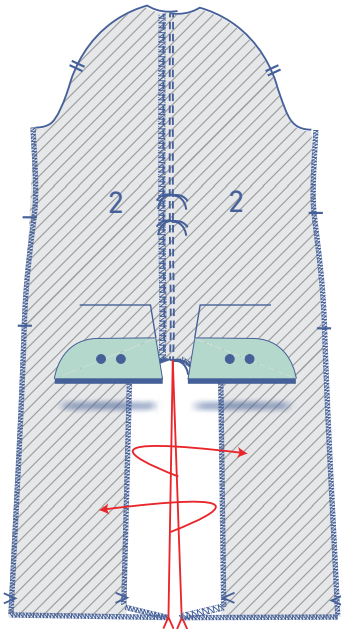
Snip diagonally into the seam allowance of the LB until just in front of the marking thread so that you can press the seam allowance towards the RB.



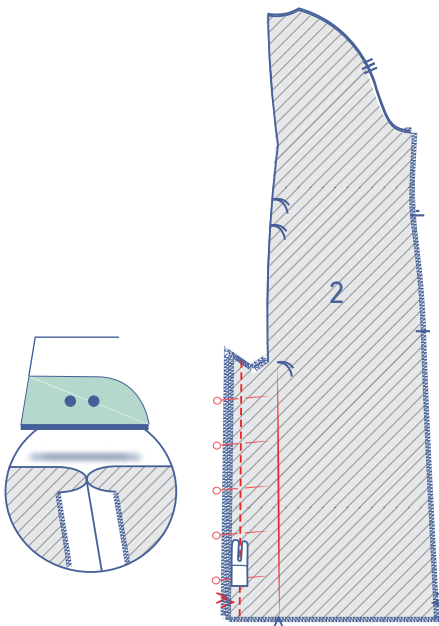
Sew two lines of topstitching on the RB right next to the seam.



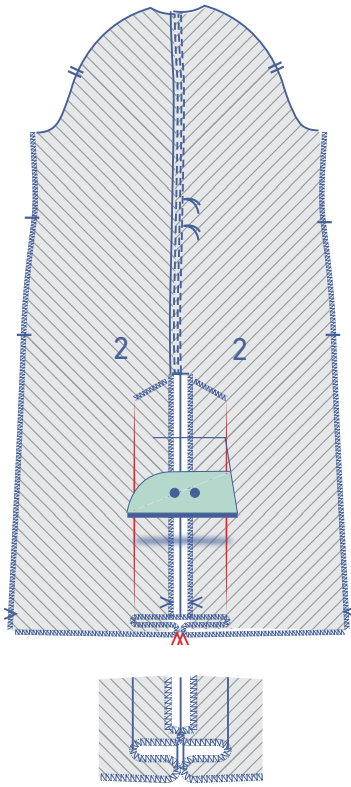
Press the facing for the split of both RB pieces towards the wrong side from the V-notches at the hem, creating a fold line. Open back out.



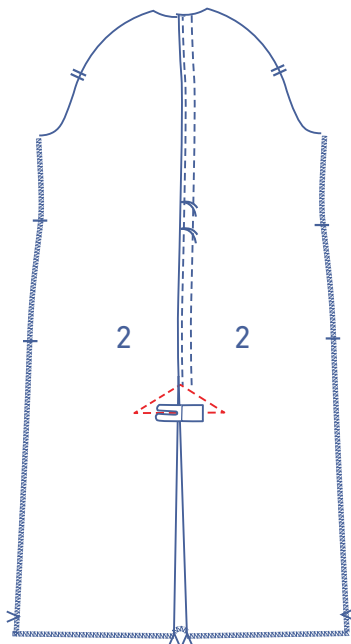
Pin and sew the facings together. Press the seam allowance open.

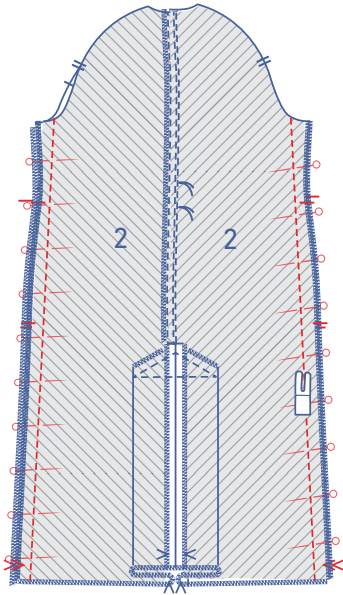


Now press the facings flat so that the seam is flush with the CB seam.



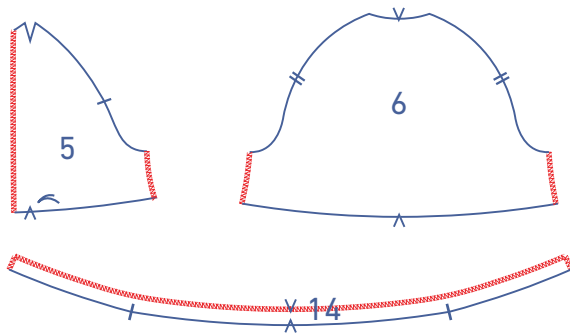
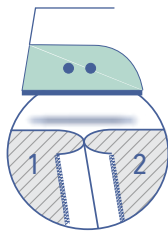
Sew a triangle on the right side of the garment, following the edge of the facing.





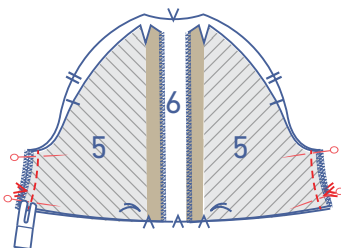
3

Pin and sew the side seams of the front and back. Press the seam allowances open.

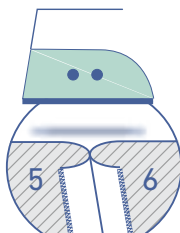


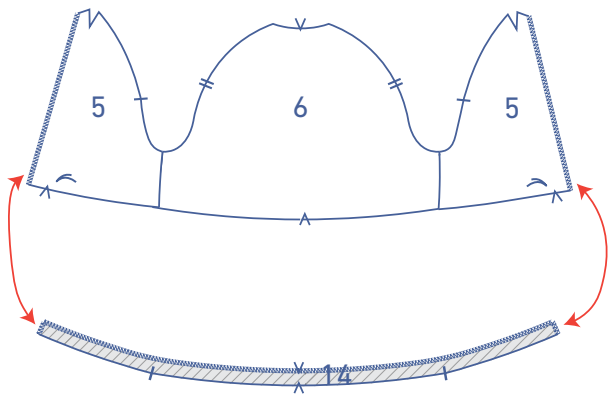
4

Finish the indicated raw edges of the front (5) and back (6) storm flaps and hem facing (14) with overlock stitching where indicated.

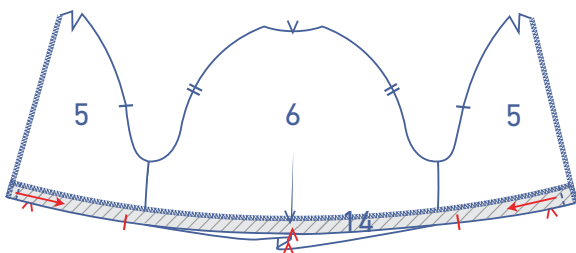
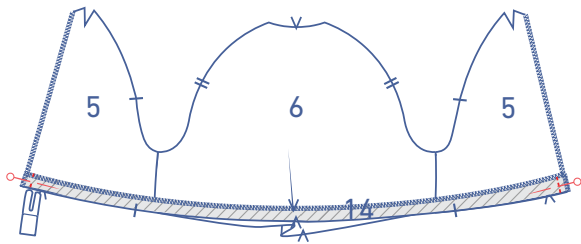


Pin and sew the side seams of the storm flaps. Press the seam allowance open.

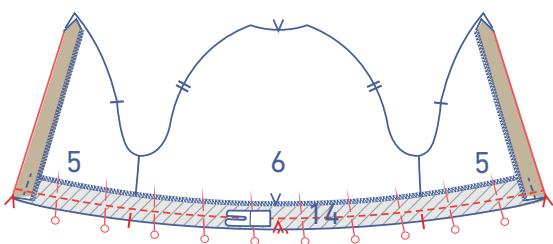
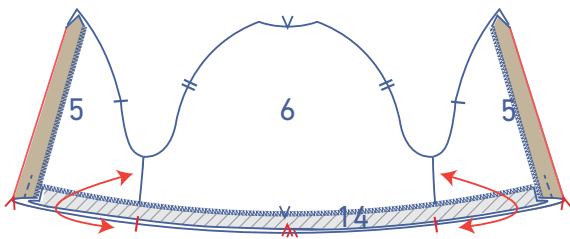




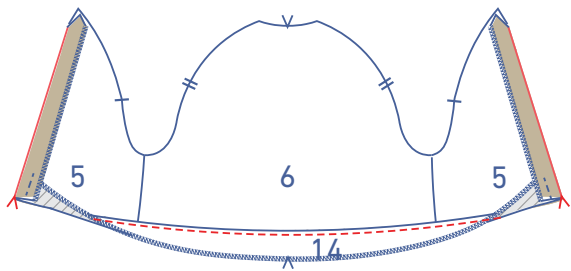
Pin and sew the short ends of the hem facing to the front storm flaps so that the bottom of both pieces are flush. Note: the hem facing is shorter than the bottom of the combined storm flap (= 5 + 6 + 5).



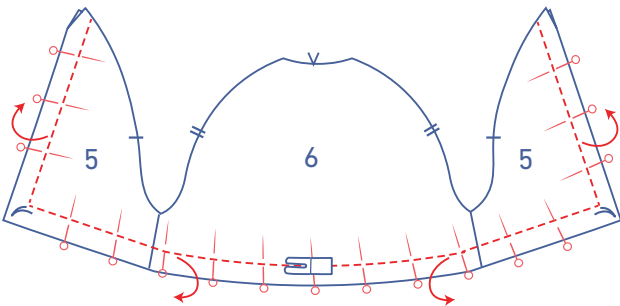
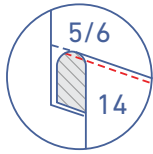
Fold the front storm flap (+ hem facing) to the front, towards the right side at the V-notches so that the bottom of the storm flap and the facing are flush.



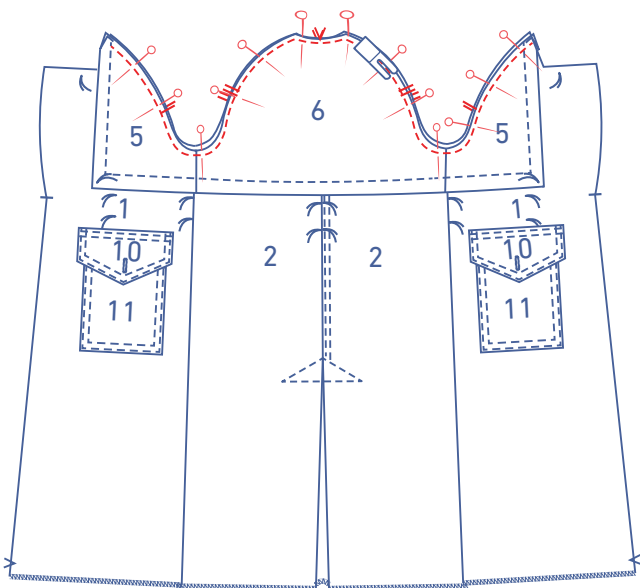
Pin and sew into place.



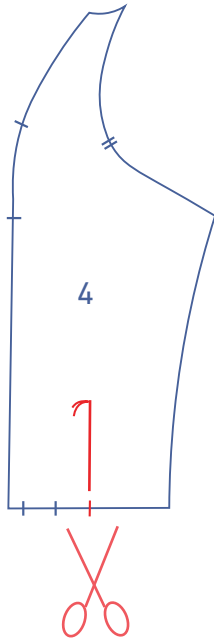
Fold the facing and seam allowance down and stitch the facing to the seam allowance underneath right next to the seam. Sew as far as possible.



Turn over the facing and arrange pieces into their final position. Pin into place and topstitch as shown, anchoring all layers.

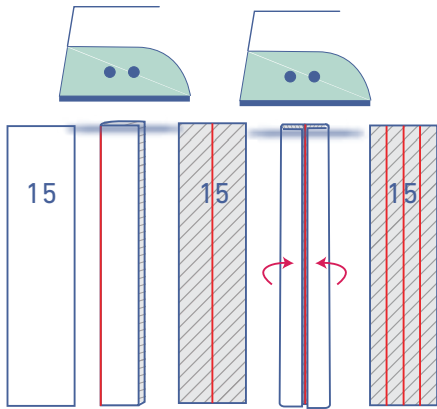


Pin the armhole of the storm flaps to the armhole of the coat with the right side of both pieces facing up. Edgestitch them together at presser foot width from the edge, matching markings.



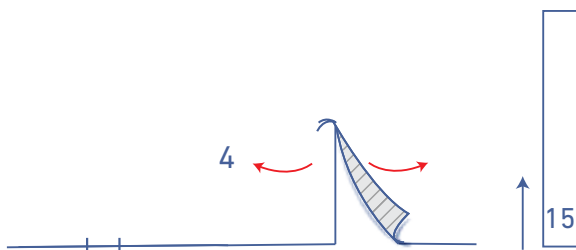
5

Snip into the sleeve back (4) from the indicated notch in the hem up to the marking thread.

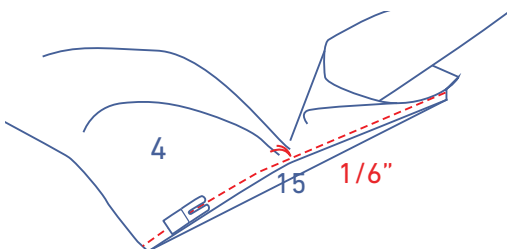


Press the sleeve binding (15) as follows:

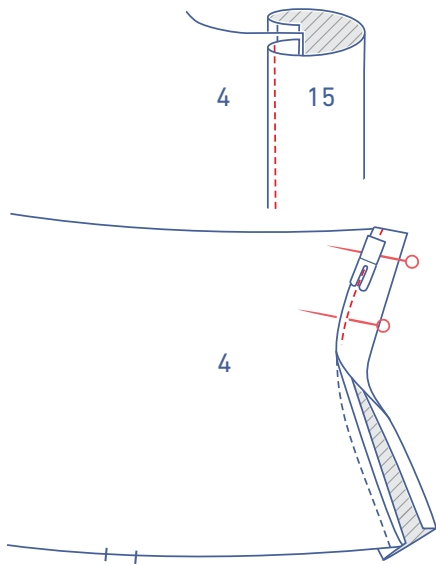
- Start by pressing the sleeve binding in half wrong sides together to create a fold line.
- Open back out.
- Then press the long ends in to meet the fold line.
- Open the sleeve binding back out.



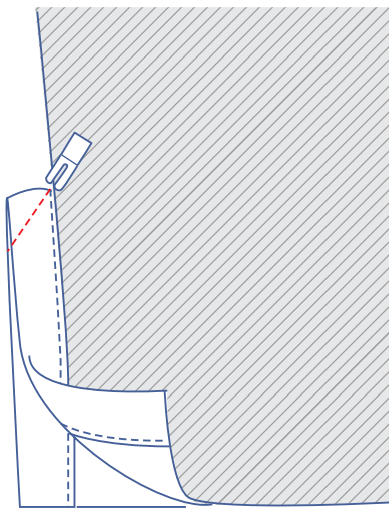
Open the sleeve split so that you end up with a single straight line.



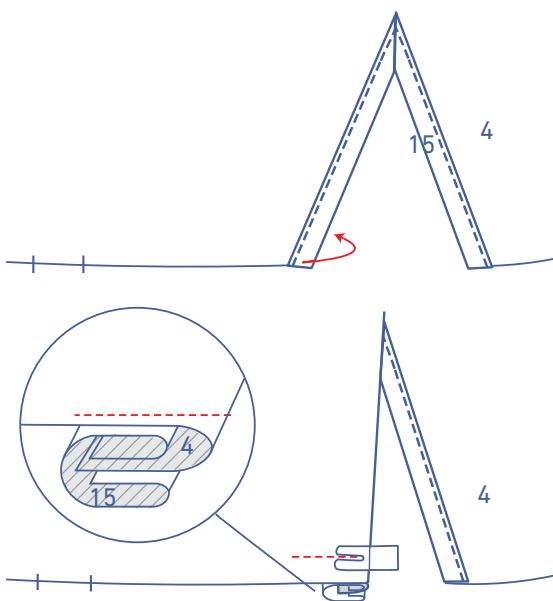
Slide the sleeve binding under the sleeve with the right side facing up. Match one long end to the end of the sleeve split and pull the sleeve a little to the side at the marking thread. Sew into place at $1/6$ ". There should only be a few stitches at the marking thread.



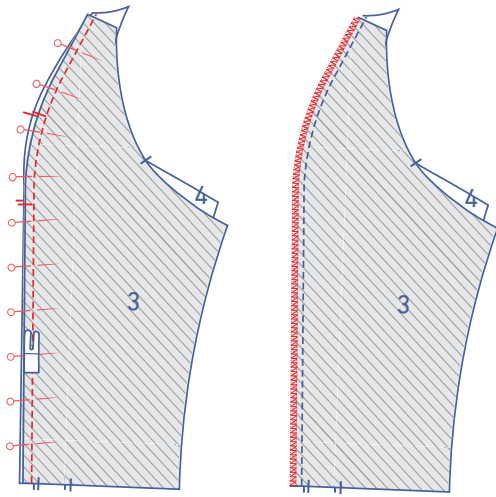
Turn the sleeve binding over towards the right side of the sleeve, tuck under the raw edge and place the pressed fold line directly over the stitching. Edgestitch into place.



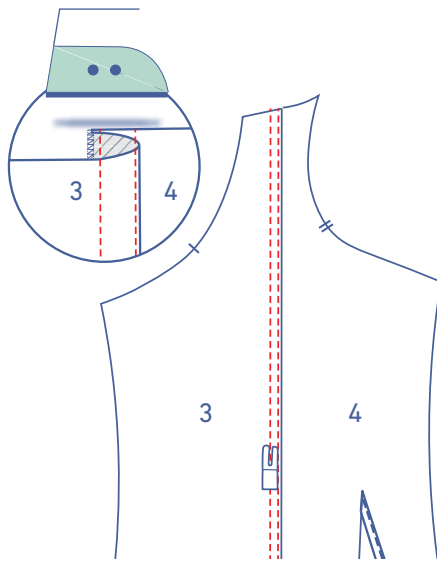
Fold the sleeve in half crosswise with the right sides facing each other. Sew the tops of the bias tape together at an angle.



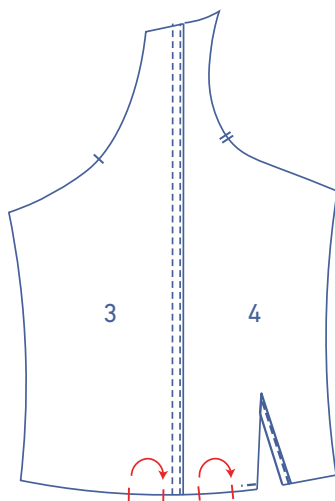
Fold the sleeve binding at the front of the sleeve (the notched end) over to the wrong side of the sleeve and sew the sleeve binding into place at presser foot width from the bottom.



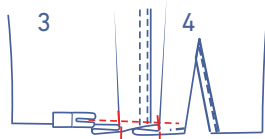
Pin and sew the curved edge of sleeve front (3) and sleeve back together. Finish the raw edges with overlock stitching.



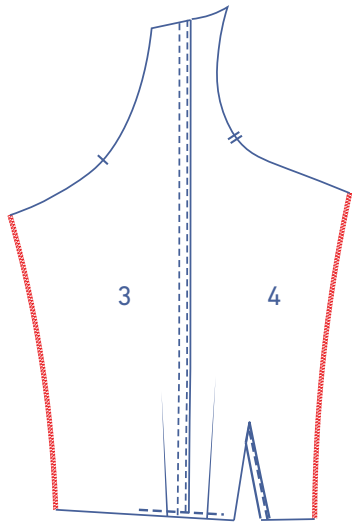
Press the seam allowance towards the sleeve front. Now, sew the sleeve front with two parallel rows of topstitching, right next to the seam.



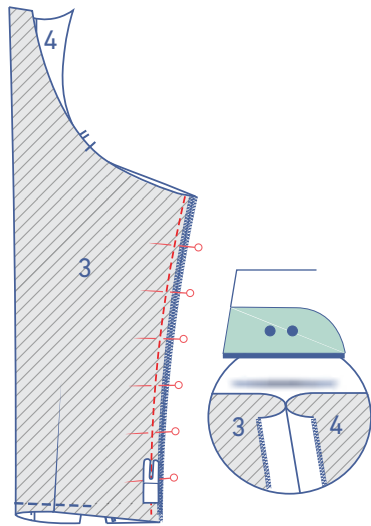
Make the pleats at the bottom of the sleeve by matching the notches in the direction indicated.



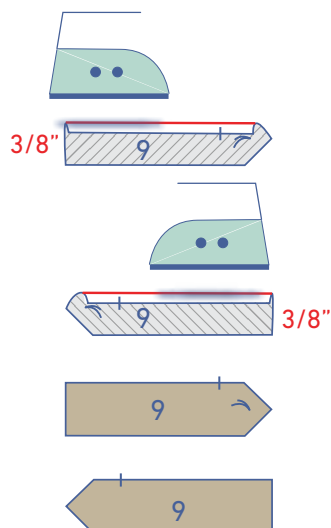
Tack into place at presser foot width from the edge.



Finish the raw edges of the sleeve with overlock stitching where indicated.

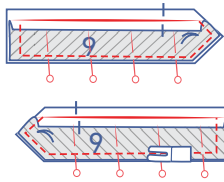


Pin and sew the underarm seams. Press the seam allowance open.

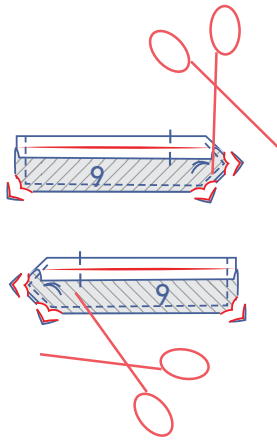


6

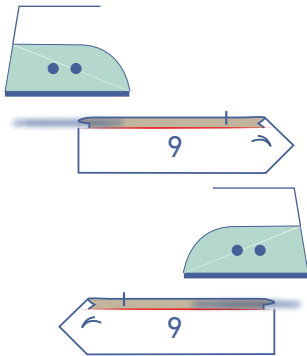
Press $\frac{3}{8}$ " of the top end of the 2 pieces of non interfaced cuff (9) towards the wrong side.



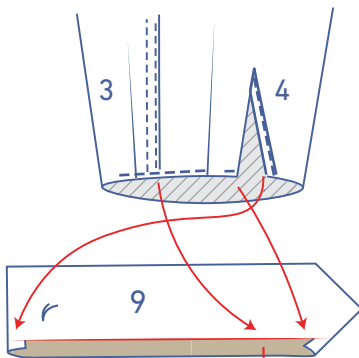
Pin and sew the edges of the cuff (one part with and the other without iron-on interfacing) together where indicated.



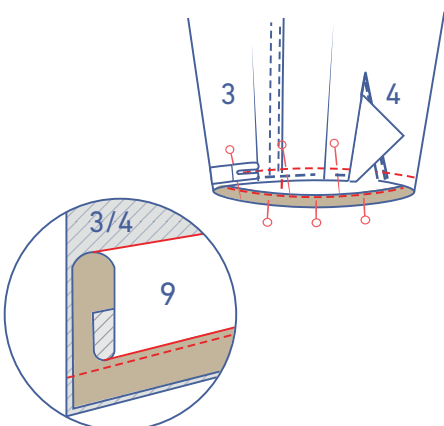
Trim the seam allowance at the corners.

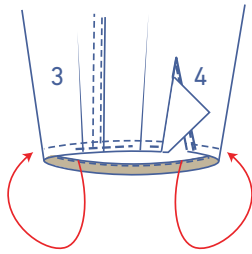


Turn the cuff the right way out and press flat.

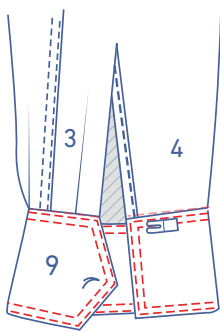


Slide the cuff into the sleeve. Pin the unpressed raw edge of the cuff to the bottom of the sleeve along the inside (= the wrong side). Sew into place.



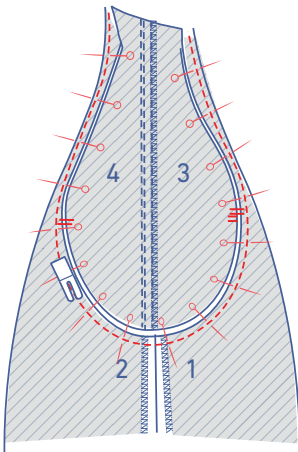


Open the cuff out so that it is on the right side of the sleeve. Place the fold line directly over the previous stitching. Edgestitch into place. Finish by edge stitching all the way around. Then, topstitch a second line parallel to your previous stitching at presser foot width.

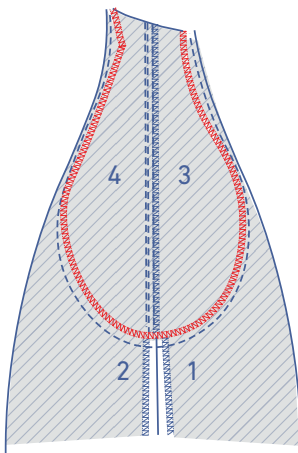


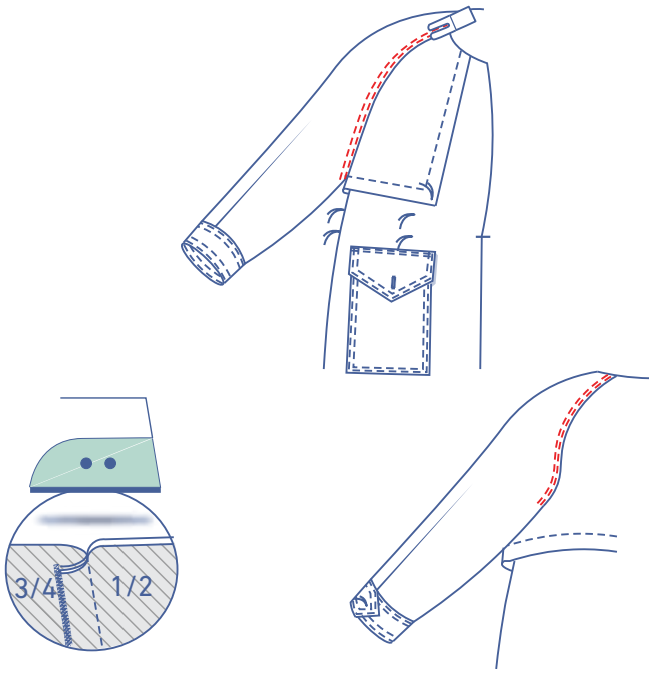
7

Pin and sew the armhole of the sleeve to the garment with the corresponding markings matching.



Finish the raw edges together with overlock stitching.

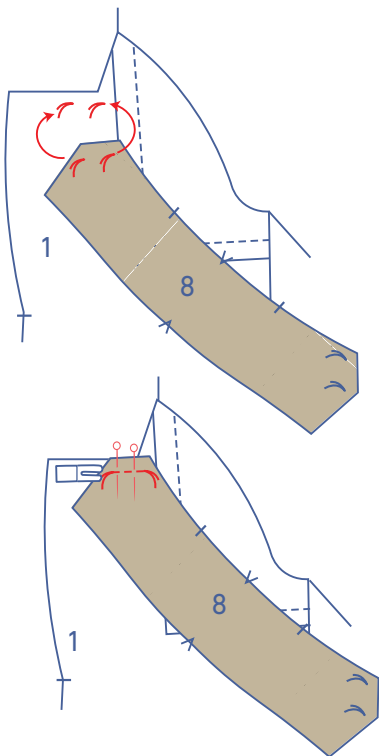




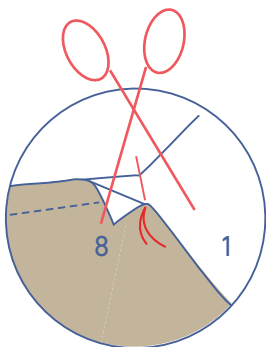
Press the seam allowances towards the sleeve. Sew two parallel rows of topstitching on the sleeve, right next to the seam.

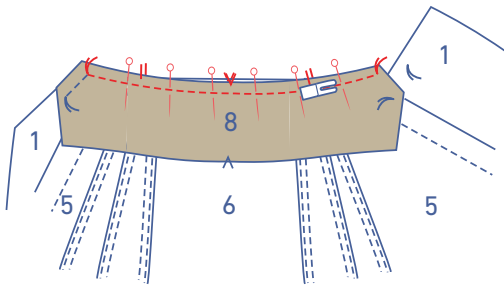
8

Place the undercollar (8) right side down on the front, matching the marking threads. Start sewing from the indicated marking thread up to the next marking thread in the corner. Leave the needle lowered into the fabric there.

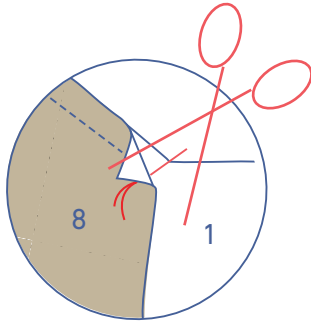


Raise the presser foot and fold the corner/tip of the collar out of the way. Snip into the seam allowance of the front, stopping just before the needle.

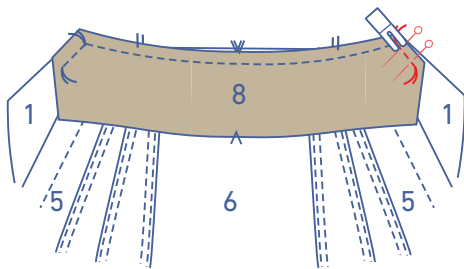




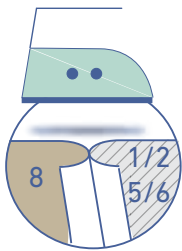
Turn the garment so that you can sew the collar to the garment's neckline, and then lower the presser foot back down. Sew up to the next marking thread in the corner, Make sure the single notches in the collar match the seam in the sleeve and the V-notch matches at the CB.



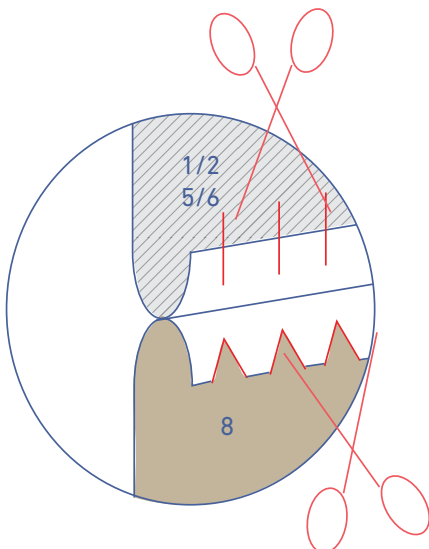
Leave the needle lowered into the fabric there. Raise the presser foot and fold the corner/tip of the collar out of the way. Snip into the seam allowance of the front, stopping just before the needle.



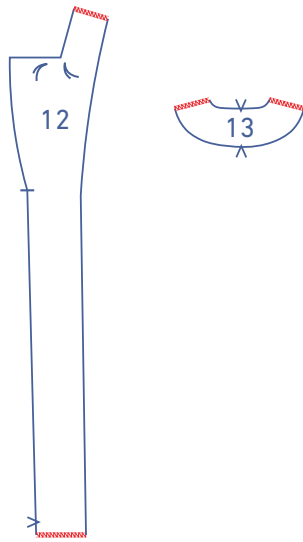
Pivot the garment to sew the last remaining section of the collar. Lower the presser foot back down and sew up to the marking thread.



Press the seam allowance open.

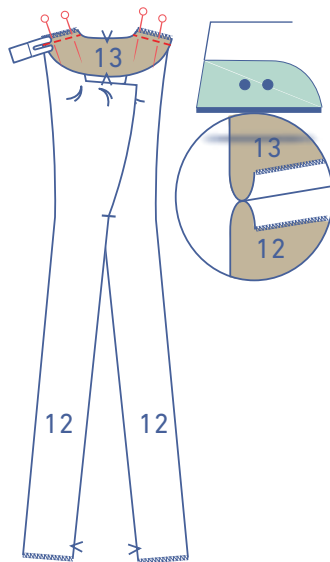


Cut triangles out of the collar's seam allowance (there's a surplus of fabric) and snip into the seam allowance of the coat's neck (to allow the collar to lie flat later).

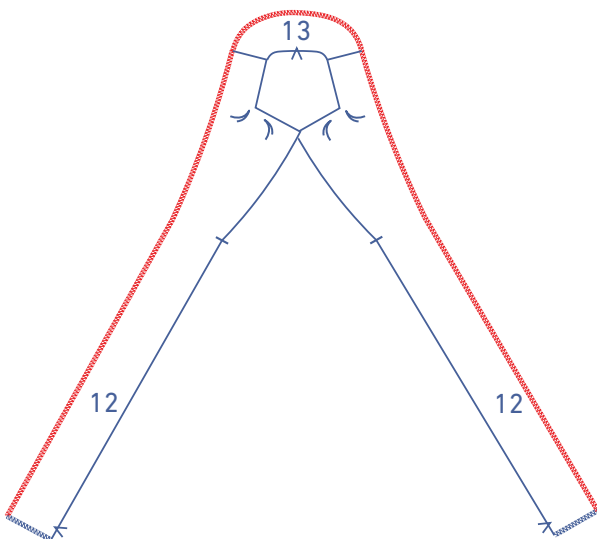


9

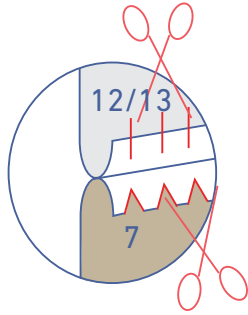
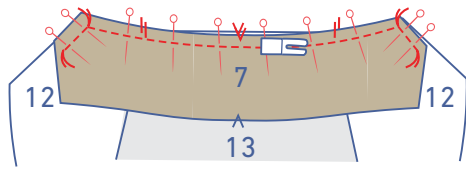
Finish the raw edges of the facing front (12) and facing back (13) with overlock stitching where indicated.



Pin and sew the shoulder seams into place. Press the seam allowances open.



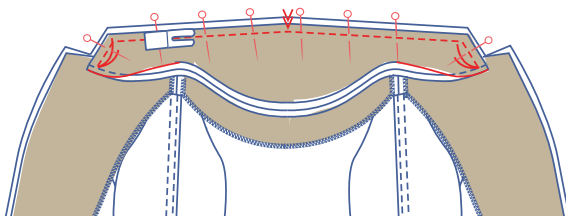
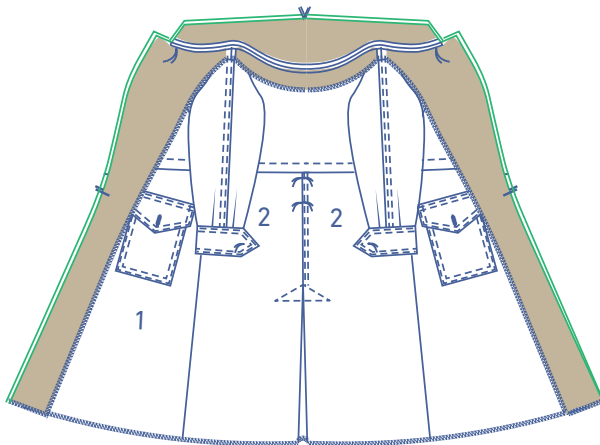
Finish the contours of the facing where indicated with overlock stitching.



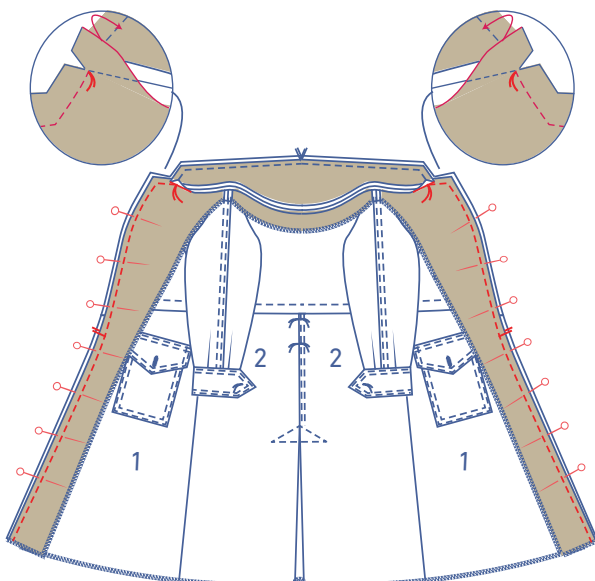
Now, follow the instructions in step 8 to sew the upper collar (7) to the facing.

10

Place the facing on the coat, right sides together.

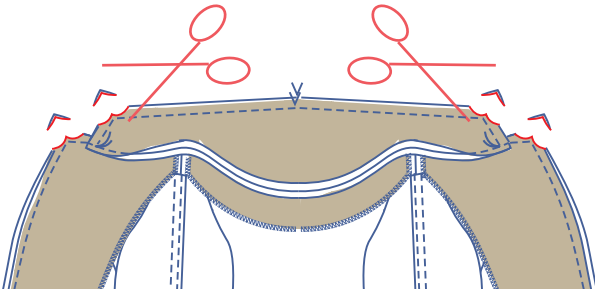


Pin the upper and undercollar together (the undercollar is smaller than the upper collar, so stretch the contours to match) and sew. Sew from one marking thread to the other, folding the seam allowances of the lapels out of the way when necessary.

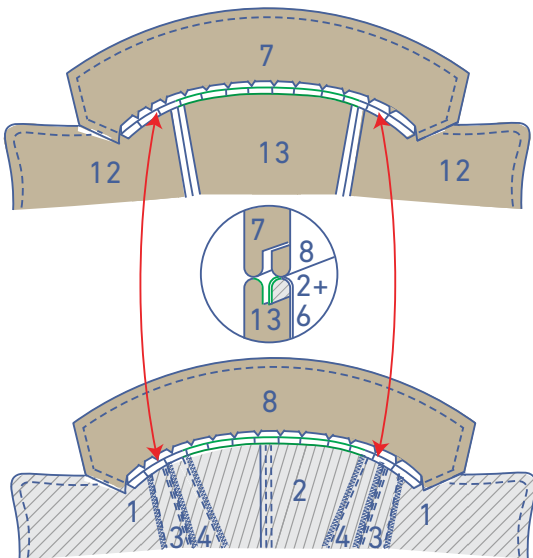


Now, pin the lapels and CF lines together and sew. Start sewing from the marking thread at the intersection of the collar and lapels and sew down to the hem. Fold the collar's seam allowance out of the way in order to sew precisely from the marking thread.

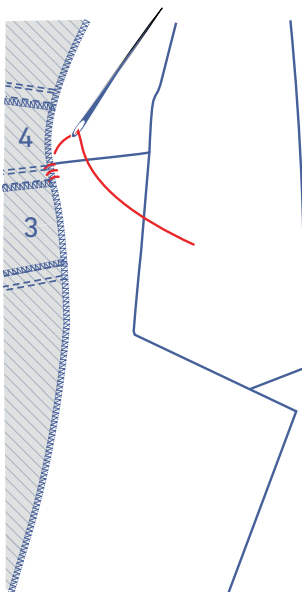
Trim the seam allowance at the corners.

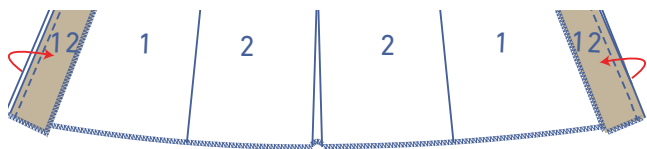


Hand stitch or sew the open, pressed seam allowances of the necklines together, working from shoulder to shoulder.



Hand sew the facing to the seams of the sleeve.

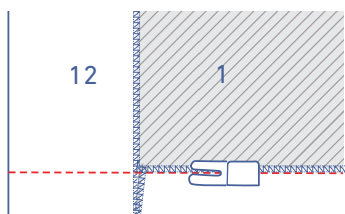
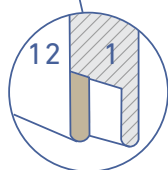
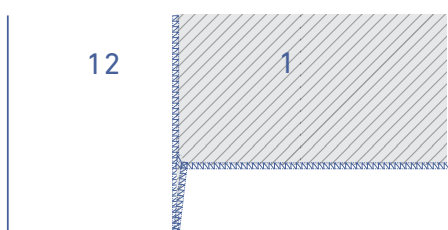
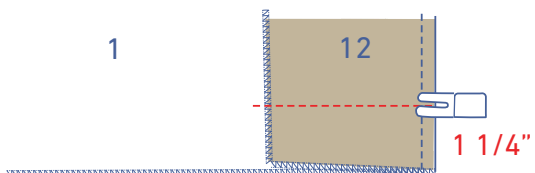




11

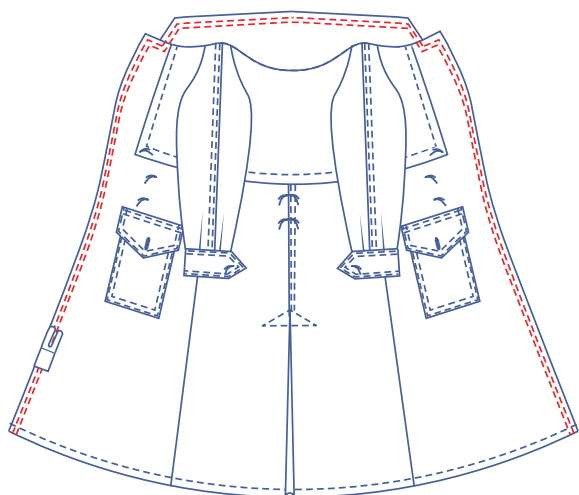
Press the facing back onto the right side of the garment.

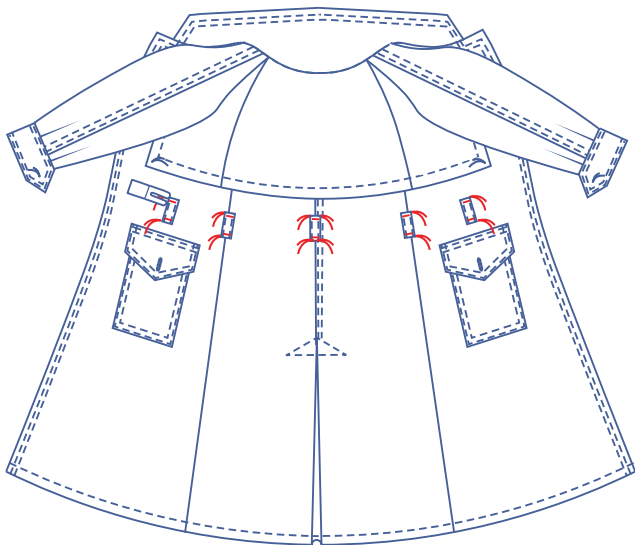
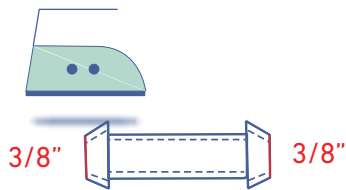
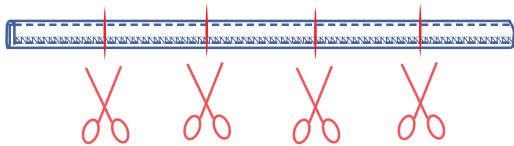
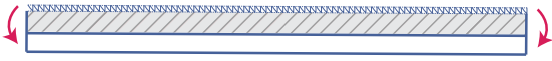
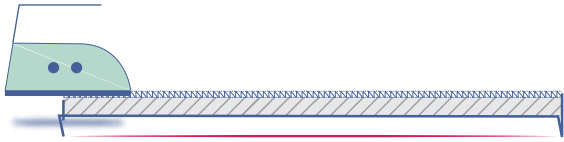
Sew the hem (of the facing and hem of the garment) at $1\frac{1}{4}$ " from the bottom. Turn the right way out.



Press the hem allowance over and sew into place.

Sew two lines of topstitching right next to the edge of the front + the facing and collar.





12

Finish one long end of the belt loops (16) with overlock stitching.

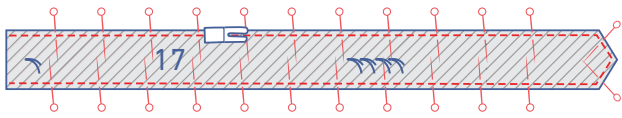
Press the unfinished end towards the wrong side, and then press the overlocked end over this.

Edgestitch into place on both sides.

Cut into five equal pieces.

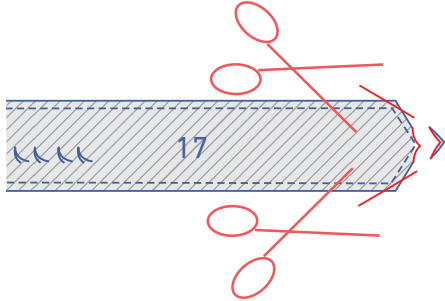
Fold both ends of each belt loop $\frac{3}{8}$ " over towards the wrong side.

Pin the belt loops on where indicated. Edgestitch into place at the top and bottom.



13

Lay both belt pieces (17) down so that the right sides match exactly. Pin and sew the edges where indicated.



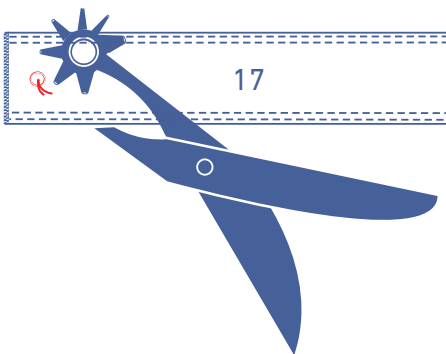
Trim the seam allowance at the corners.



Turn the belt right side out and sew two lines of parallel topstitching right next to the finished edges.



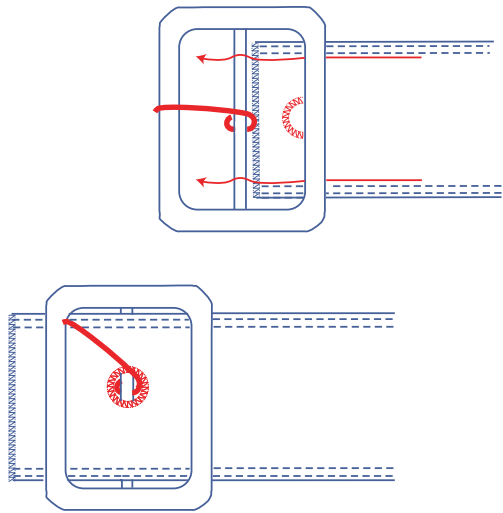
Finish the short, unfinished ends of the belt together with overlock stitching.



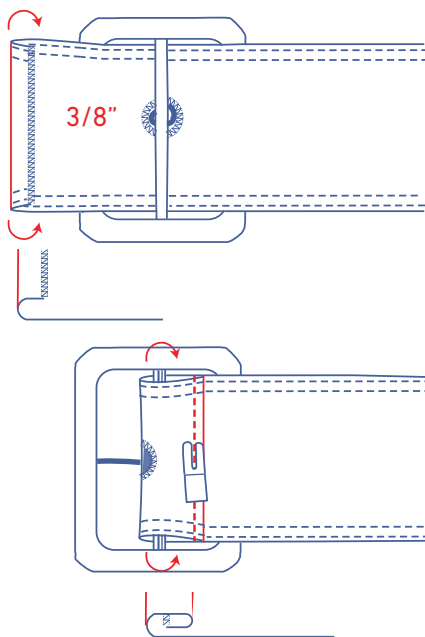
Make a hole for the belt buckle pin to go through later.



Finish the edge of the hole with fine zigzag stitching.



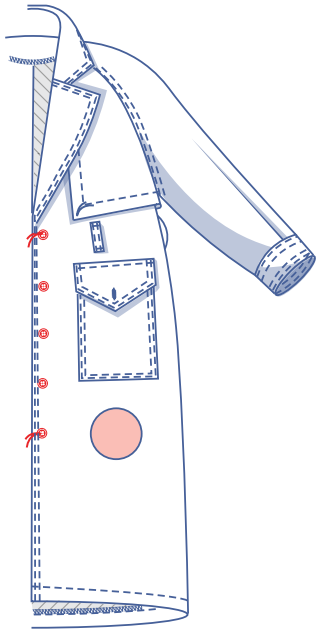
Thread the overlapped end of the belt through the buckle and insert the pin through the hole.



First, fold the overlapped end $\frac{3}{8}$ " over. Then fold over again. Sew together next to the fold line.

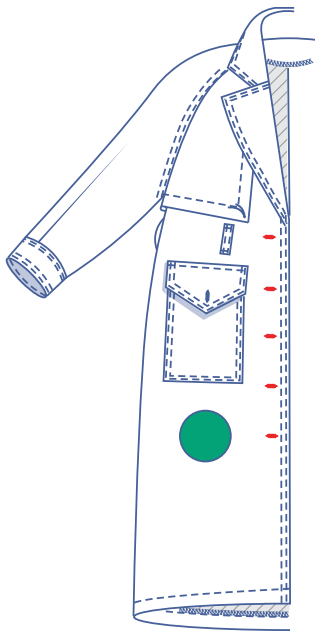


Attach the eyelets to the belt where indicated.

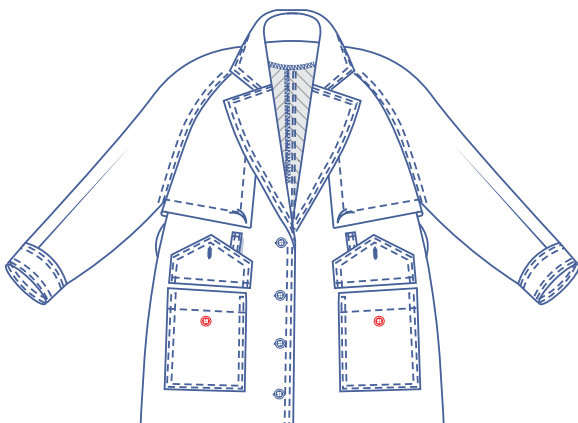


14

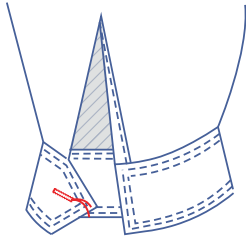
Sew the buttons onto the LF. The top and bottom button locations have been marked on the pattern for you. To mark the other button locations, evenly divide the distance between the top and bottom button.



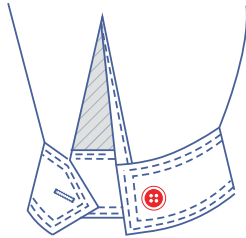
Make horizontal buttonholes in the RF to match the buttons.



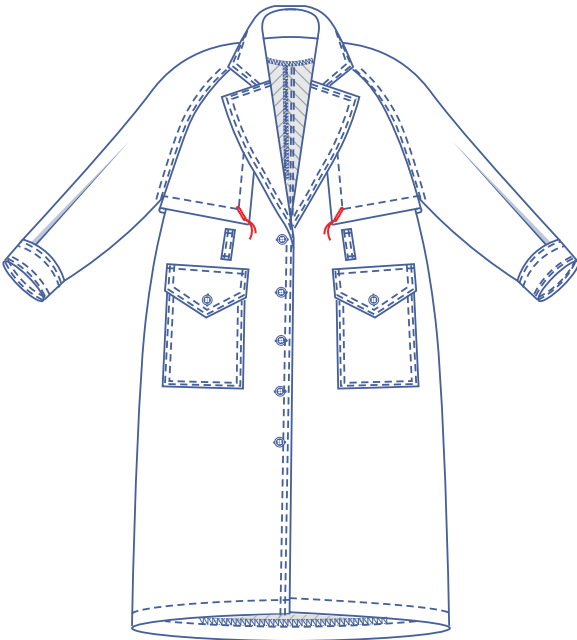
Sew the buttons to the pockets to match the buttonholes on the flaps.



Make a horizontal buttonhole on the cuff at the indicated place.



Sew a button to match on the other side.



Make a diagonal buttonhole on the front storm flap where indicated.



Sew a button to match on the other side.