



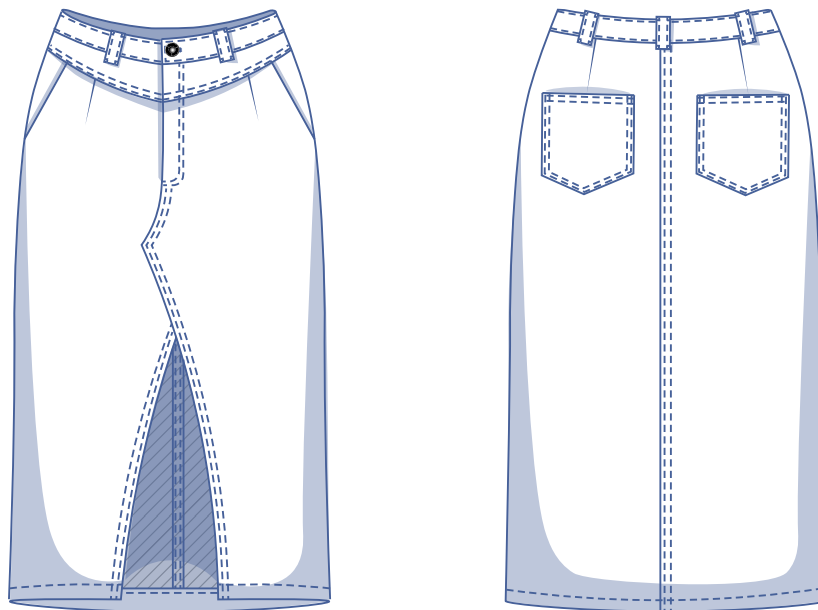
Fenna by Fibre Food

Fenna by Fibre ood



4 - 32

Fenna is a fantastic addition to your wardrobe. At the front, it features a beautiful slit with shaped seam, a flattering front yoke and slash pockets. At the back there are darts for a perfect fit, and patch pockets. You can leave these pockets out if you wish. There's no zip in the waistband but a button band, which saves you some work. You can adapt this particularly charming but lively model in all kinds of ways: midi length, like here, or maxi or even more mini. All are equally fancy.



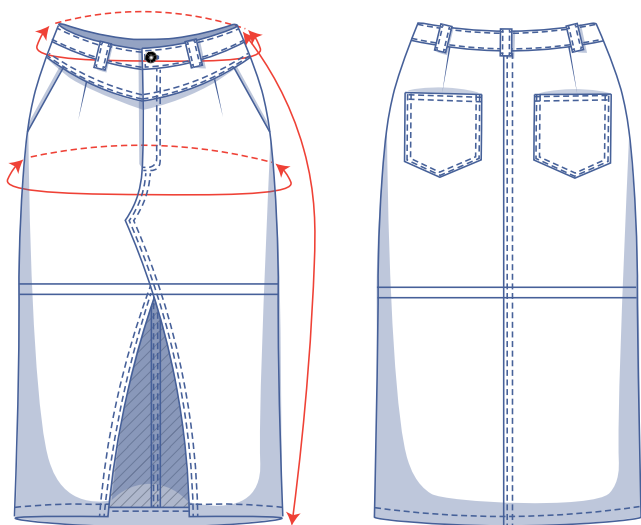
size chart (in cm)

size	4	6	8	10	12	14	16	18	20	22	24	26	28	30	32
body height	160	164	166	167	168	169	170	171	172	172	172	172	172	172	172
W (waist)	66	68	70	74	78	82	84	88	94.5	101	107.5	114	120.5	127	133.5
H (hips)	86	90	94	97	100	103	106	109	115	120	125	130	135	140	145



To choose your size, start with your [waistline measurement](#). Pick the size that fits your waistline measurement best. Next, see which size is closest to your hip measurement. Do you end up with two different sizes? When tracing your pattern pieces, simply trace from the line of one size to the other.

pattern measurements (in cm)



This chart's measurements are the pattern measurements based on the fabric type and serve as a reference. Ease has been added to the width measurements (in addition to the exact body measurements) for a more [comfortable fit](#).

==== shorten or lengthen the pattern here

size	4	6	8	10	12	14	16	18	20	22	24	26	28	30	32
side length*	86.5	87	87.25	87.5	87.75	88	88.5	88.75	90	90.25	90.5	90.75	91	91.25	91.5
waist	66	68	70	74	78	82	84	88	94.5	101	107.5	114	120.5	127	133.5
hips	91.5	95.5	99.5	102.5	105.5	108.5	111.5	114.5	120.5	125.5	130.5	135.5	140.5	145.5	150.5

* Including the waistband.

Compare the stated lengths to the measured or desired lengths. [Lengthen](#) or [shorten](#) the skirt by cutting the pattern pieces at the indicated double lines. Then either increase the distance between the cut pieces by the desired amount (to lengthen) or overlap the pieces (to shorten). Make sure that the CF and CB lines and the side seams are always straight.

IMPORTANT

Adjust the amount of fabric to be used based on these alterations.

notions



- Thread
- Iron-on interfacing: max. 145 cm
- (Denim) buttons (Ø 1.7 cm): 5
- Lightweight fabric or lining: max. 30 cm
- Fabric: see table

fabric use		4	6	8	10	12	14	16	18	20	22	24	26	28	30	32
fabric width 110 cm	cm	180	180	180	190	195	195	200	205	210	220	230	245	255	265	270
fabric width 140 cm	cm	180	180	180	180	180	185	190	195	200	205	225	230	240	245	255

The corresponding fabric layout can be found on page 6 of these sewing instructions.

fabric advice



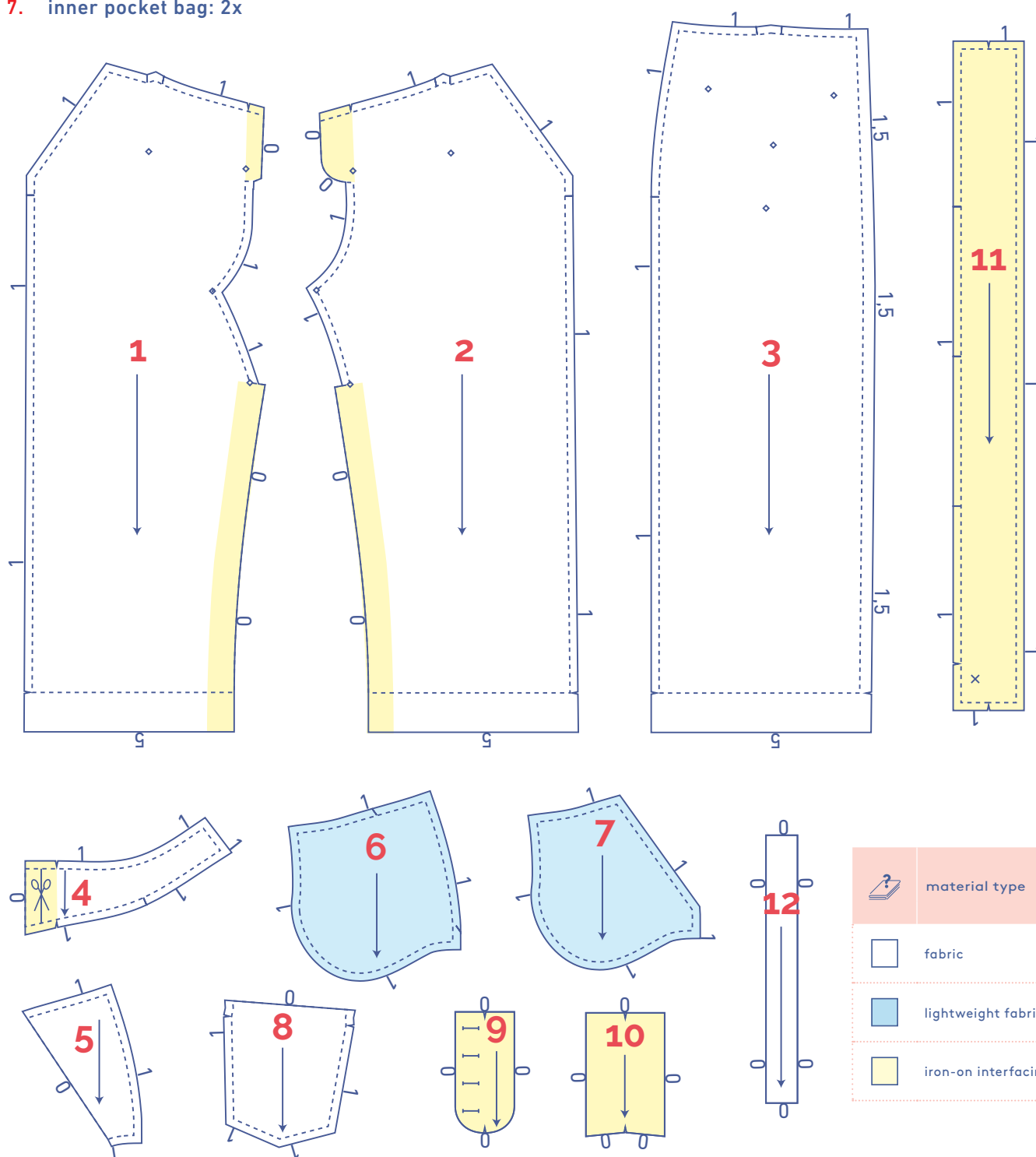
We really recommend a slightly stiffer fabric. We love Fenna in denim! Cotton twill or gabardine also give great results, either solid coloured or with a cool design.



pattern pieces & seam allowances (in cm)

To sew the garment as described in the instructions, draw the illustrated seam allowances around the paper pattern pieces before cutting them out. If you are using a PDF pattern, the pattern can be printed with or without seam allowance. Watch the [video](#) for more info.

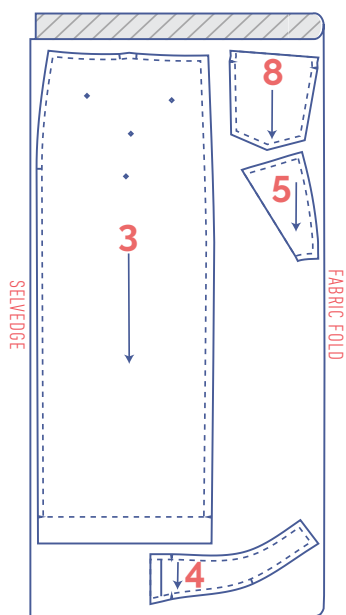
1. right front: 1x
2. left front: 1x
3. back: 2x
4. yoke: 2x
5. pocket opening: 2x
6. pocket lining: 2x
7. inner pocket bag: 2x
8. pocket back: 2x
9. buttonhole placket: 1x
10. fly: 1x
11. waistband: 1x
12. belt loops: 1x



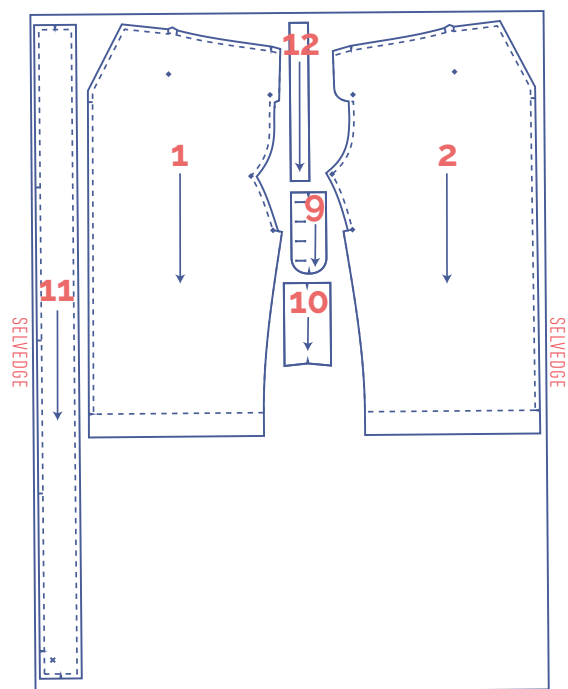
fabric layout for solid fabrics

fabric width 110 cm

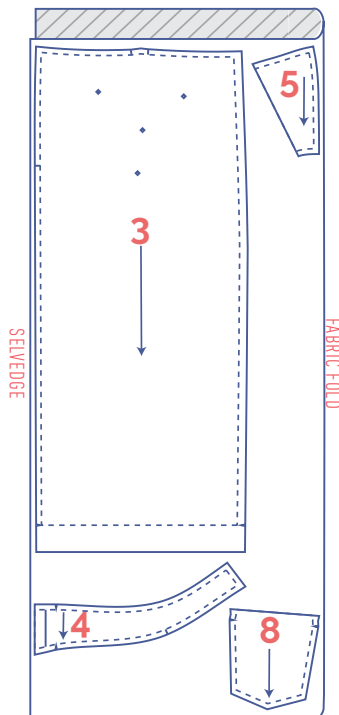
4 - 22



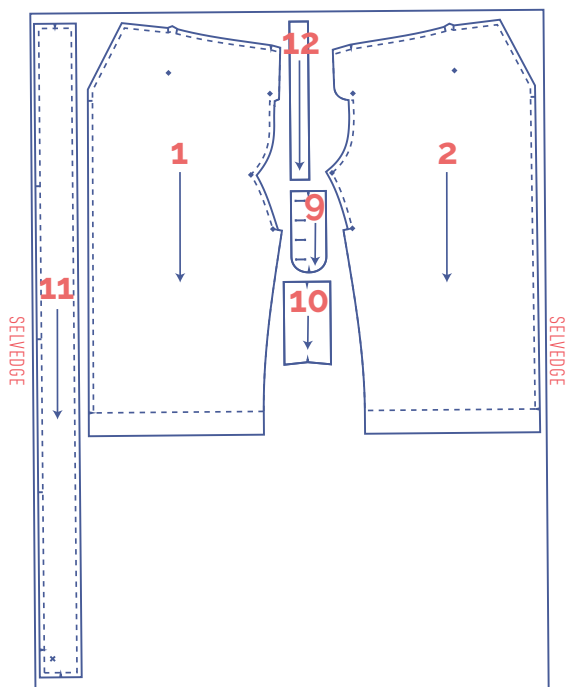
+



24 - 32



+



marking pattern pieces

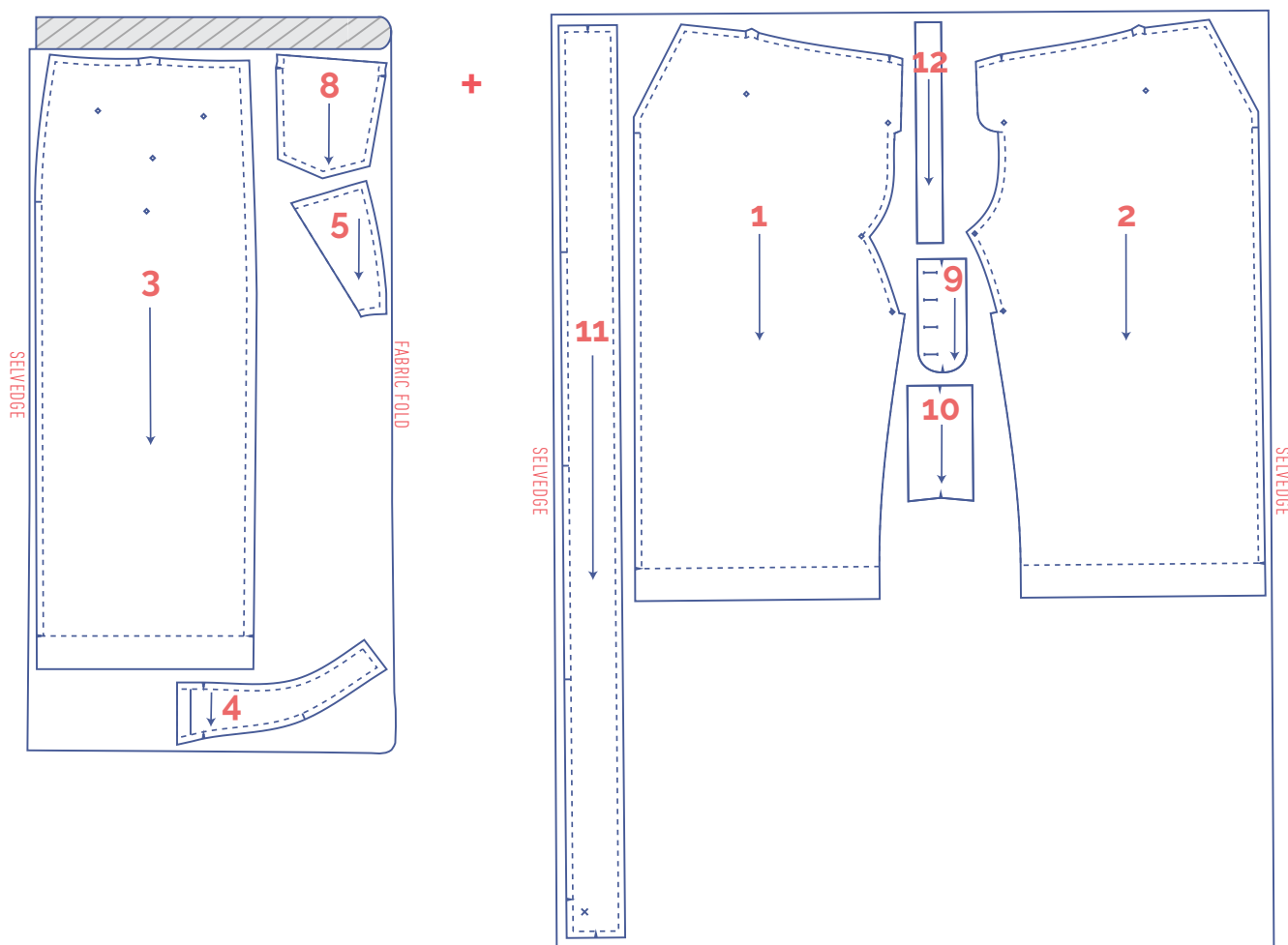
	notch the paper pattern and fabric at the following points
	single notch
V	V-notch/fabric fold

	mark the following centre points with marking thread
	centre point
	buttons







fabric layout for solid fabrics

fabric width 140 cm

4 - 32



marking pattern pieces

 notch the paper pattern and fabric at the following points	 mark the following centre points with marking thread
 single notch	 centre point
 V-notch/fabric fold	 buttons

sewing instructions



The method used to finish the seams depends on the fabric used. The pieces are always sewn together with the right sides of the fabric facing, unless stated otherwise.

F front

B back

CF centre front

CB centre back

RF right front 

LF left front 

RB right back 

LB left back 

 right side

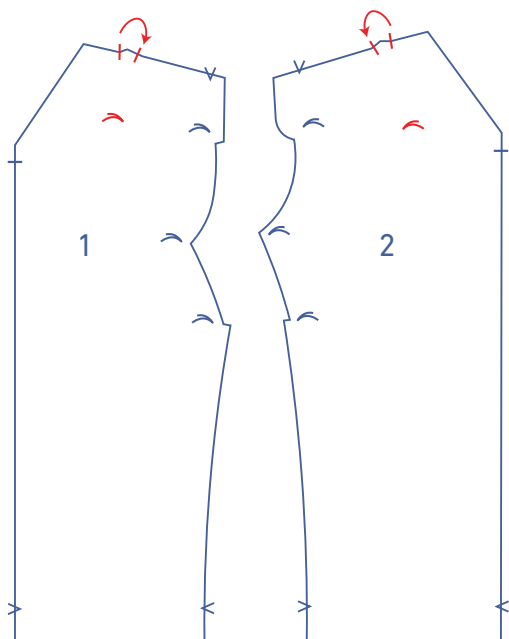
 wrong side

 lining right side

 lining wrong side

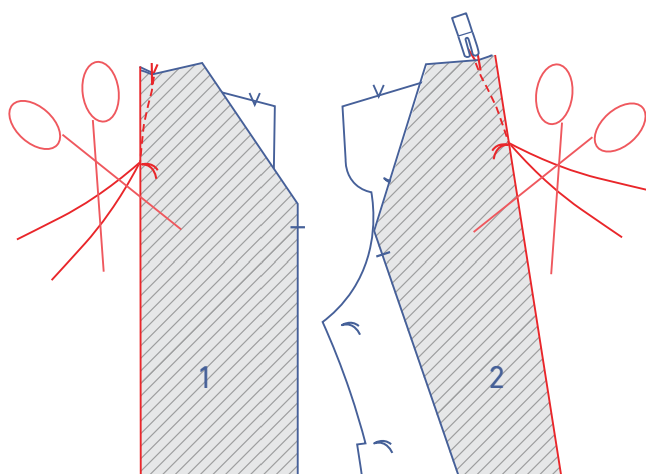
 iron-on interfacing



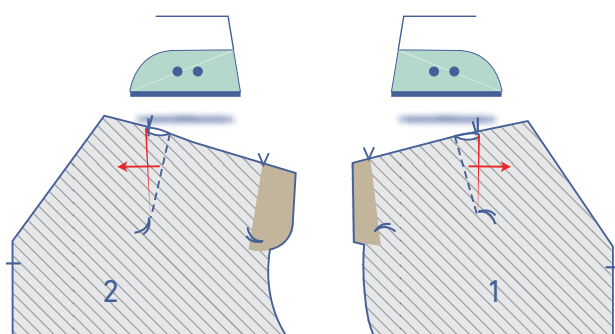


1

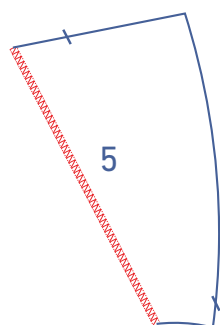
To make the darts, match the notches at the top of the RF (1) and LF (2) right sides together.



Sew the dart in a slightly curved line towards the marking thread. Sew up to and just past the marking thread, so that you've sewn past the fabric. Snip the threads and tie a knot.

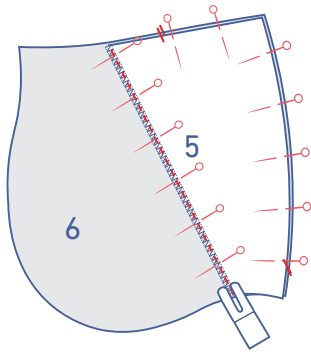


Press the dart towards the side seam.

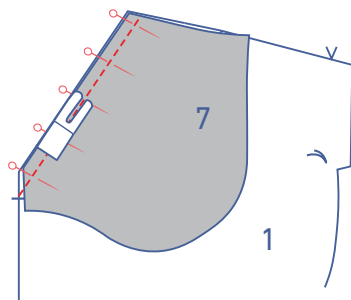


2

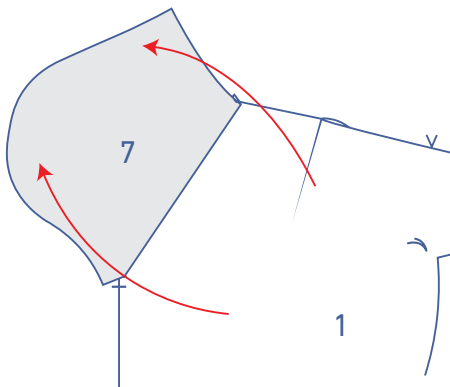
Finish the slanted edge of the pocket opening (5) with overlock stitching.



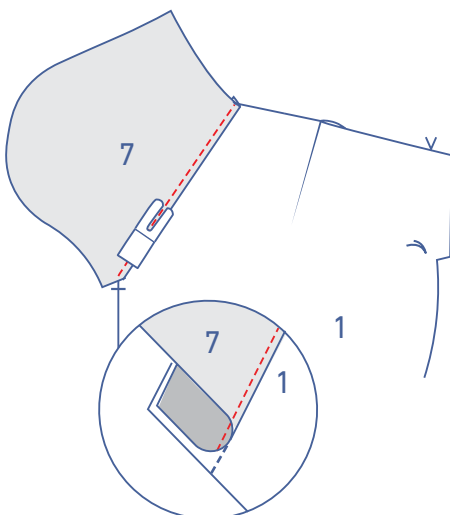
Pin the pocket opening to the pocket lining (6). Both pieces should now be facing right side up. Sew the pocket opening to the pocket lining along the slanted edge.



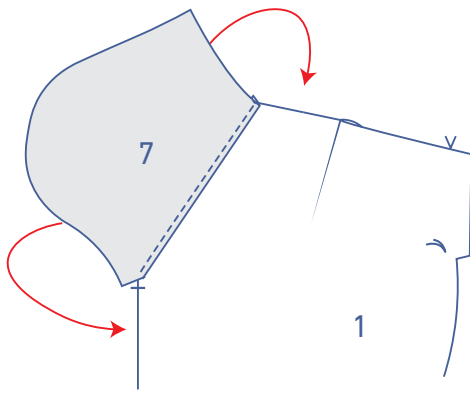
Pin and stitch the slanted edge of the inner pocket bag (7) to the front.



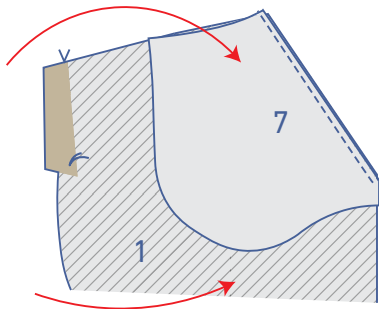
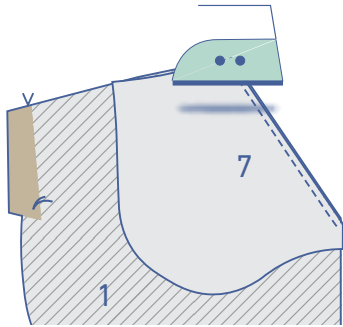
Fold over the inner pocket bag.



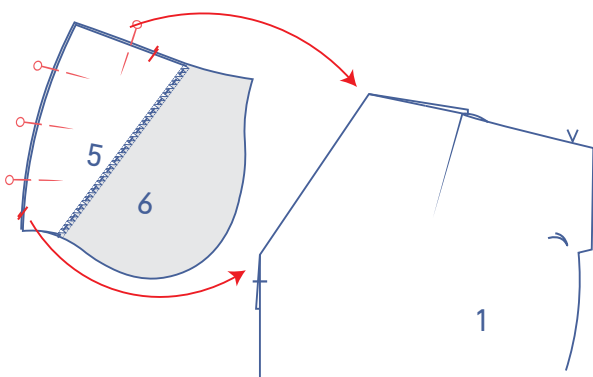
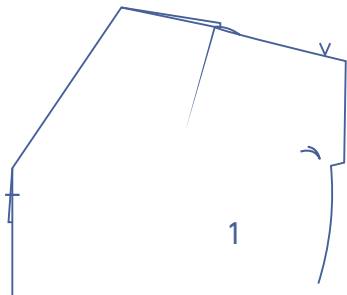
Sew the inner pocket bag to the seam allowance underneath, right next to the seam.



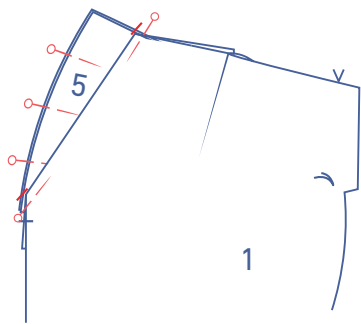
Fold the inner pocket bag all the way over to the wrong side, and iron flat.



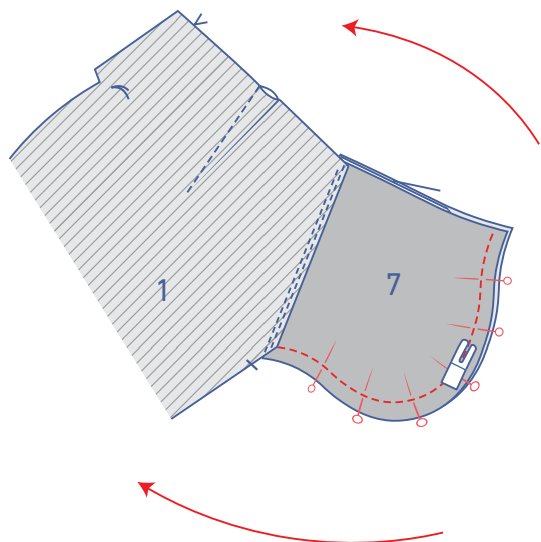
Turn your work over so that the front is facing up.



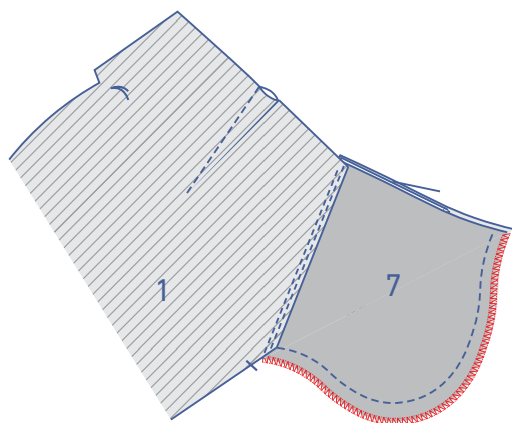
Place the pocket lining + pocket opening under the front/ inner pocket bag, matching notches.



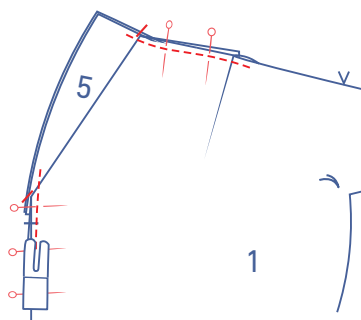
Pin temporarily into place.



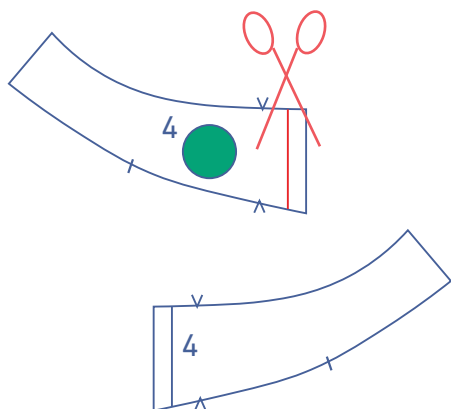
Turn over the front and arrange the pocket pieces neatly on top of each other. Pin and sew the contours of the pocket pieces together.



Finish the raw edges of the pocket pieces together with overlock stitching.

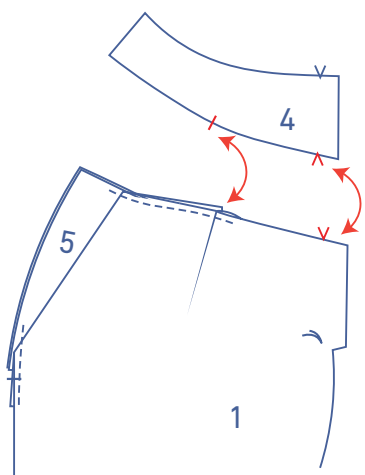


Arrange the pocket into the final position and turn your work over so the front is facing up. Stitch the pocket pieces to the front at presser foot width from the edge.

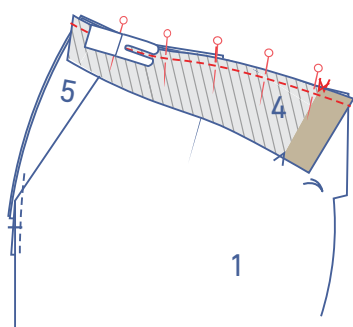


3

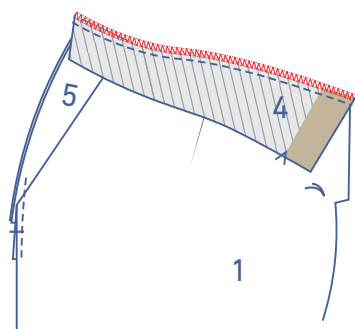
Cut a piece of the yoke (4) of the RF along the indicated line.

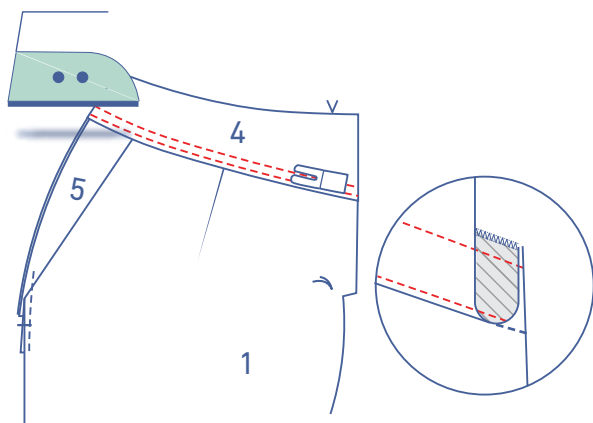


Pin and stitch the yoke and front right sides together, matching the markings.



Finish the raw edges together with overlock stitching.

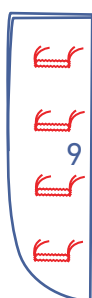
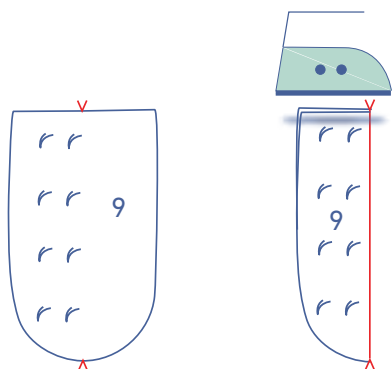




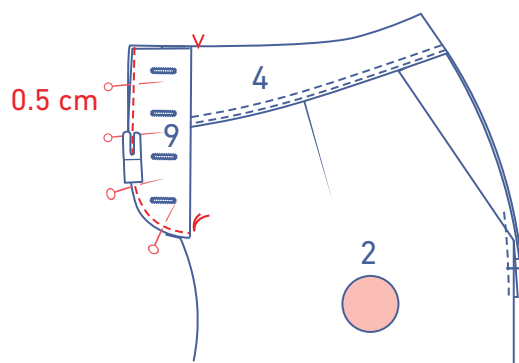
Press the seam allowance up and stitch the yoke with two rows of parallel topstitching, right next to the seam.

4

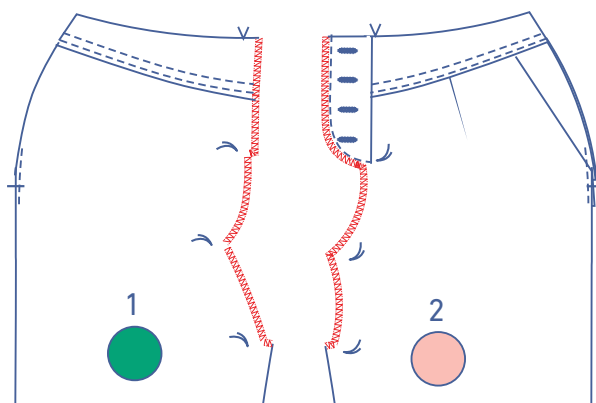
Fold the buttonhole placket (9) in half at the V-notches, wrong sides together.



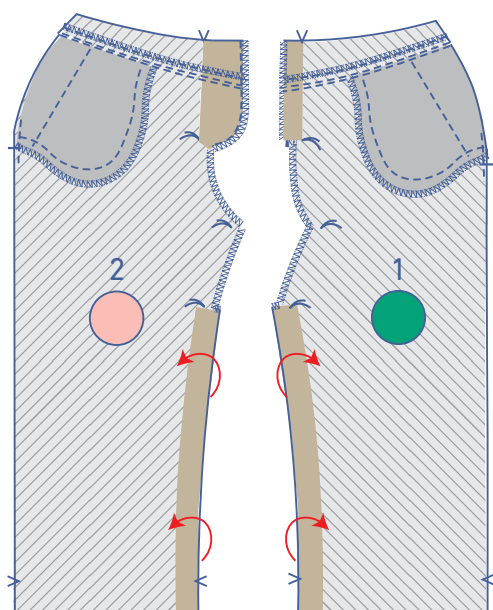
Make horizontal buttonholes at the indicated places.



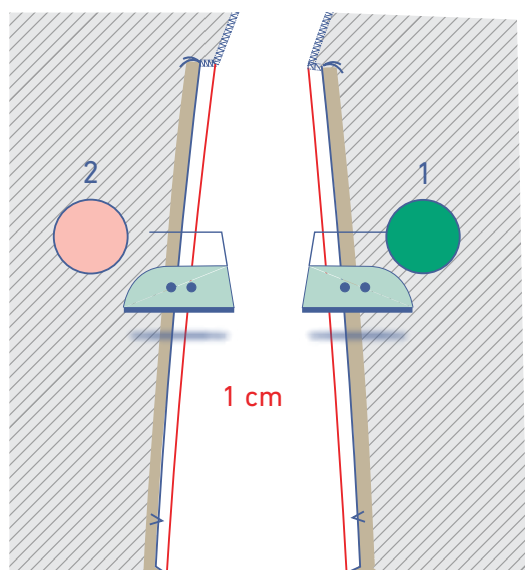
Pin the raw edges of the buttonhole placket to the shaped fly of the LF. Sew into place at 0.5 cm from the raw edge. (The finished edge of the buttonhole placket should be slightly in front of the V-notch that indicates the CF. The bottom of the placket should be just next to the marking thread).

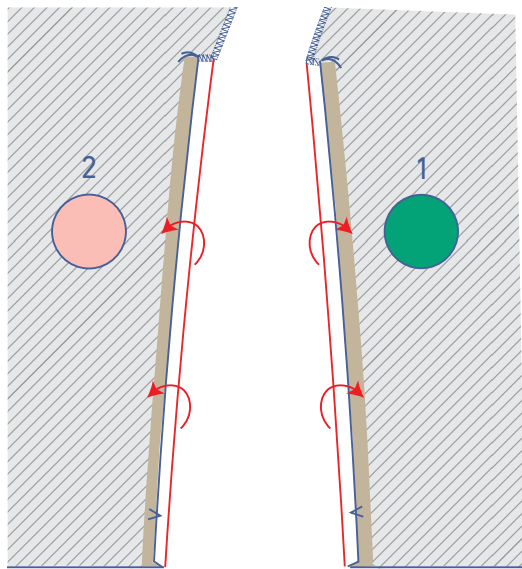


Finish the raw edges on the CF with overlock stitching.

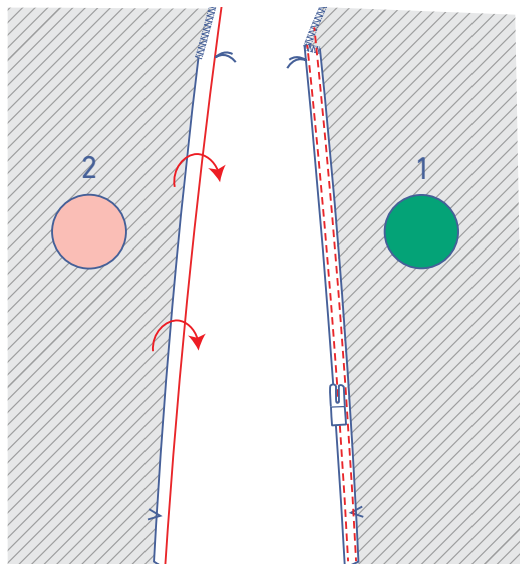
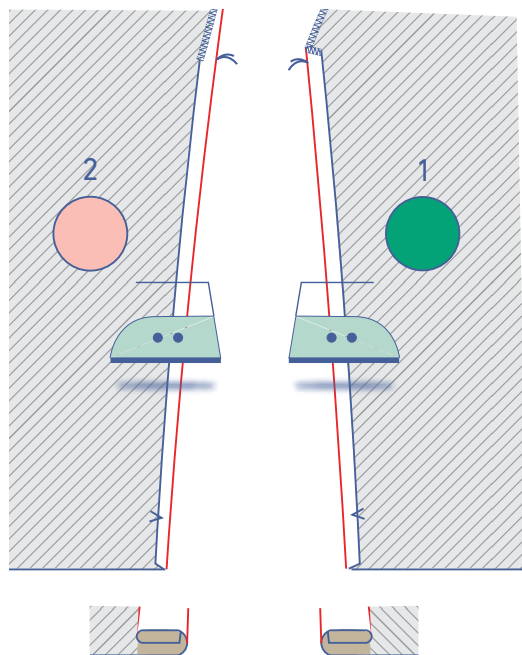


Press the indicated edge of the RF and LF 1 cm over to the wrong side.

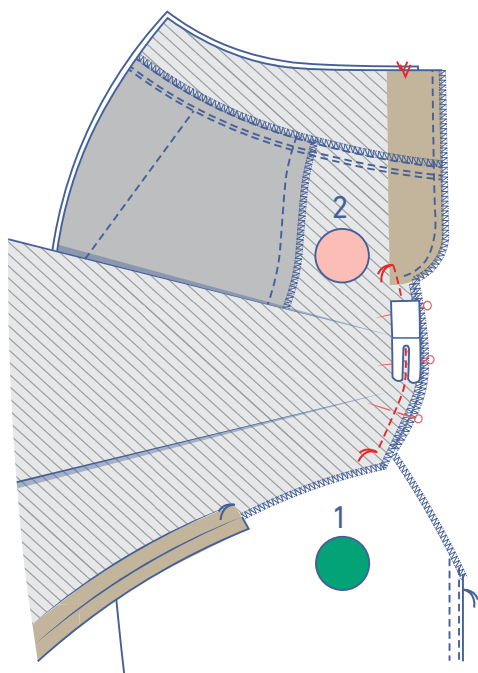
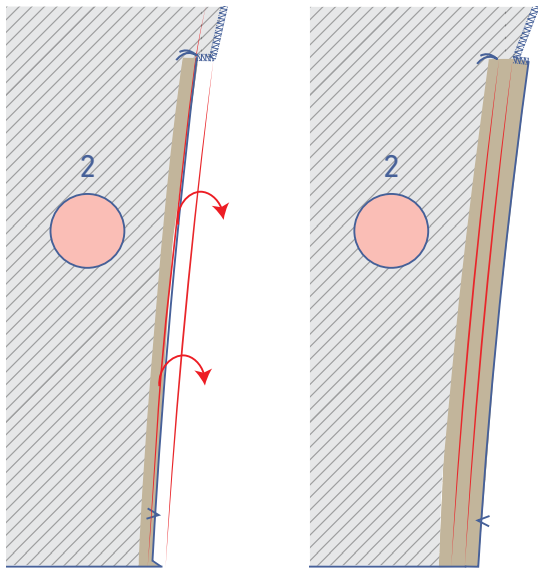




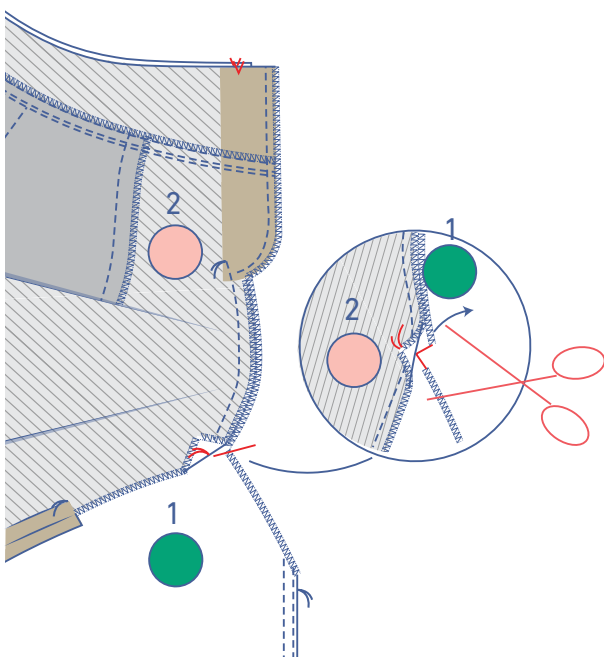
Fold over again and press flat.



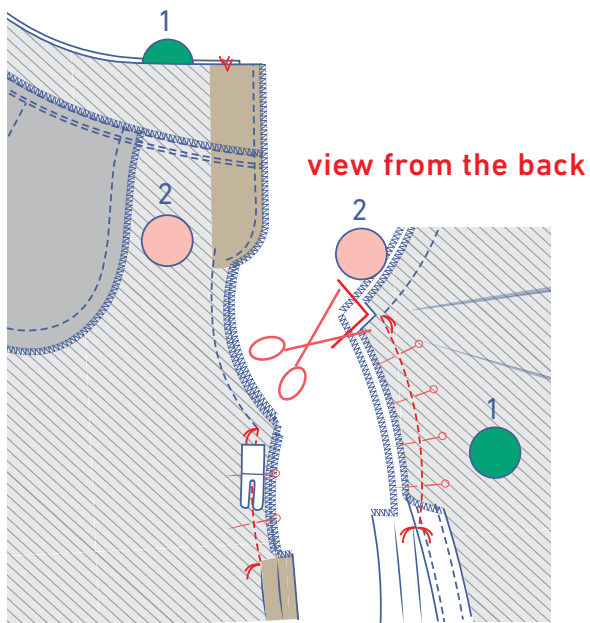
Sew the folded seam allowance of the RF with two rows of parallel topstitching. Unfold the pressed allowances of the LF.



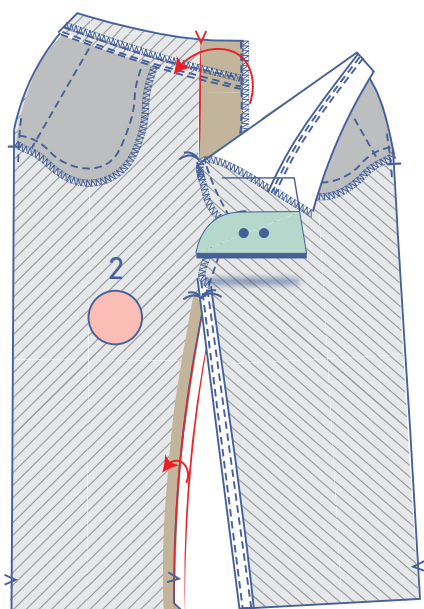
Pin the V notches and marking threads of the RF and LF (+ buttonhole placket) together. Please note: the LF fly extends past the RF. Stitch the CF seam from the marking thread at the bottom of the placket, stopping at the next marking thread, leaving the needle in the fabric at that point.



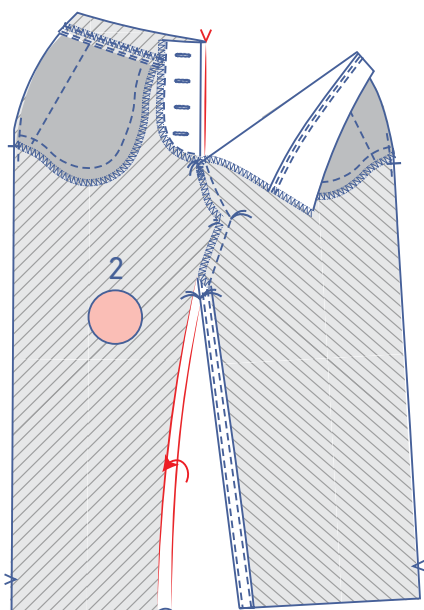
Raise the presser foot, fold the seam allowance of the LF out of the way, and snip into the seam allowance of the RF until right before the marking thread. Turn the garment and lower the presser foot back down.

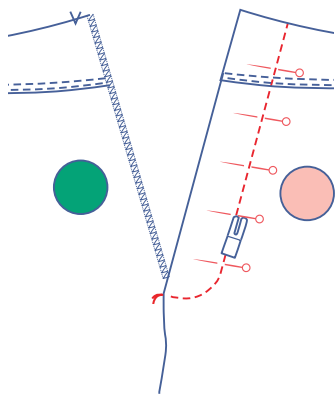


Continue sewing to the next marking thread. Trim the seam allowance in the corner of the LF.

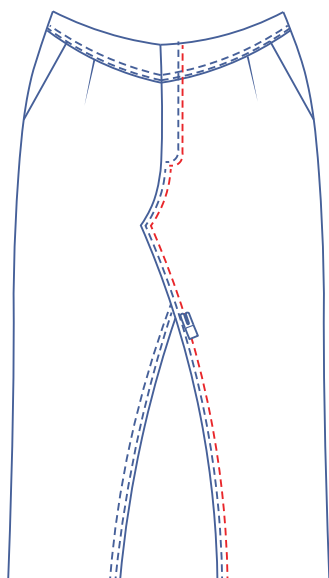
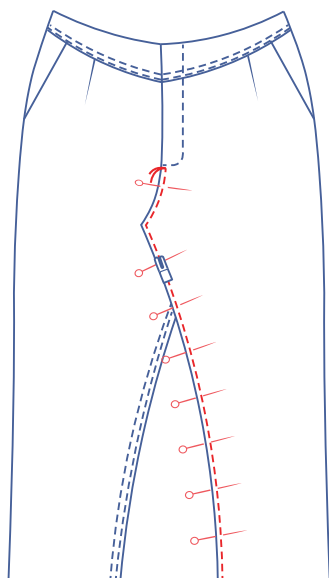


Press the shaped fly + buttonhole placket of the LF over at the V notch. Press the seam allowance towards the LF. Fold back the seam allowance on the LF under the marking thread where indicated.

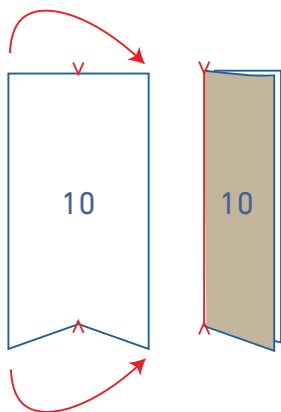




Pin and topstitch the right side of the fabric along the edge of the shaped fly through all layers (front + shaped fly + buttonhole placket). Continue sewing until the hem.

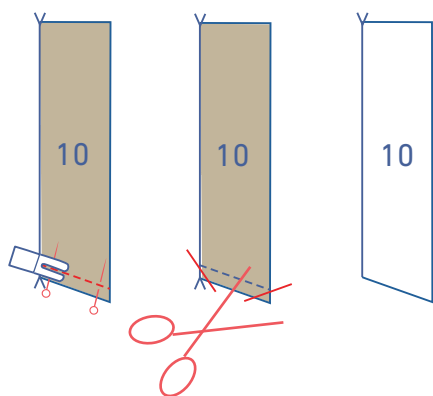


Topstitch next to the first row of stitching at presser foot width.



5

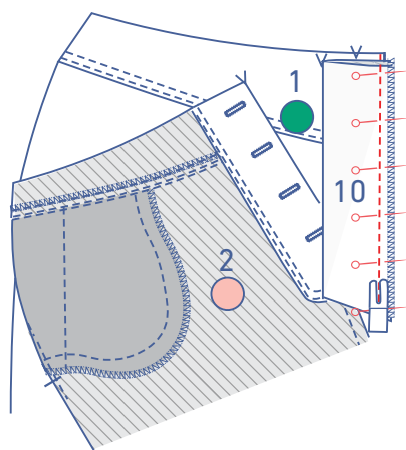
Fold the fly (10) in half at the V-notches, right sides together.



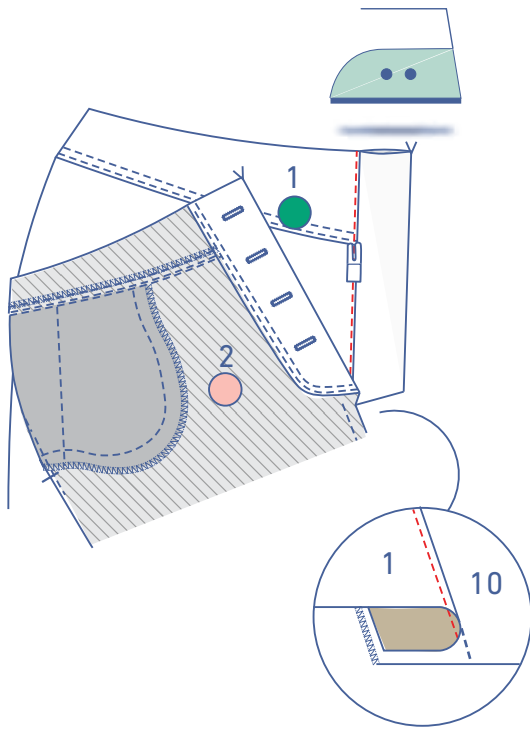
Pin and sew the short, slanted end at the bottom. Clip the seam allowance at the corners and turn out the right way.



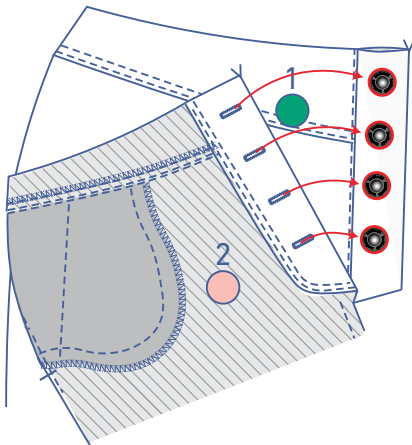
Finish the raw edges on the side together with overlock stitching.



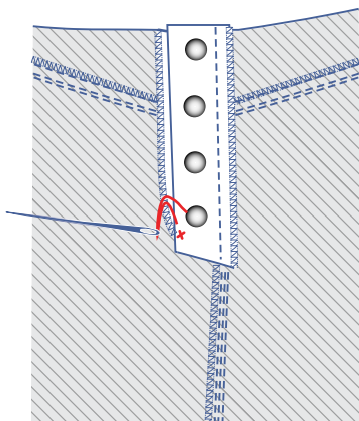
Pin and sew the fly to the seam allowance of the RF.



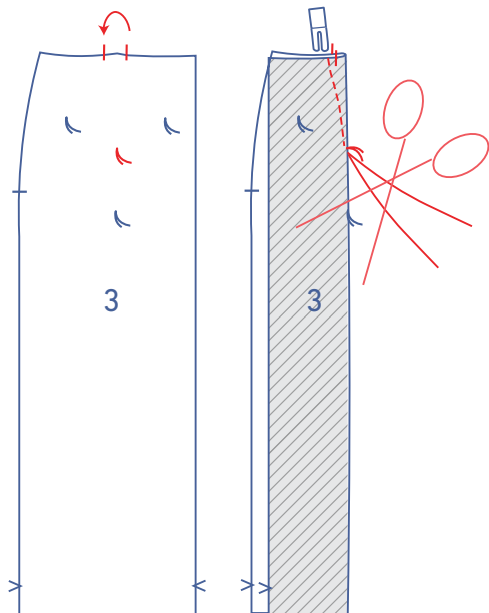
Fold over the fly and topstitch next to the seam through all layers of fabric (= RF + seam allowance).



Attach the jeans buttons to the fly of the RF so that they line up with the buttonholes on the LF (make sure that the V-notches marking the CF on both pieces line up neatly when the buttons are closed).

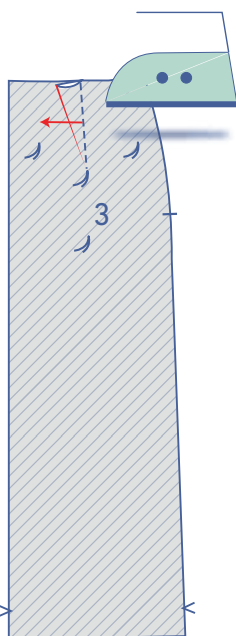


Sew the shaped LF fly and the RF fly together at the bottom with just a few stitches.

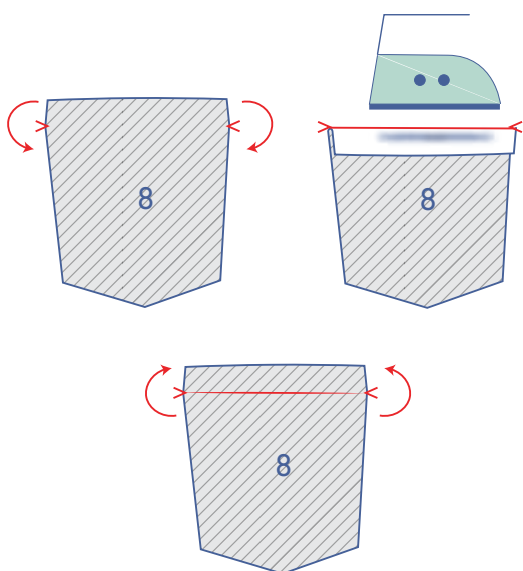


6

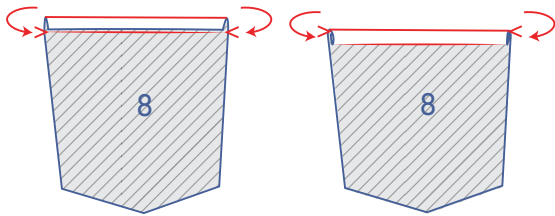
Match the notches in the waist seam of the back (3), right sides together. Sew the dart in a slightly curved line towards the marking thread. Sew up to and just past the marking thread, so that you've sewn past the fabric. Snip the threads and tie a knot.



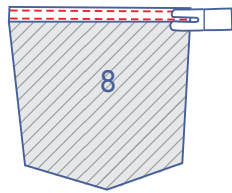
Press the dart towards the CB.



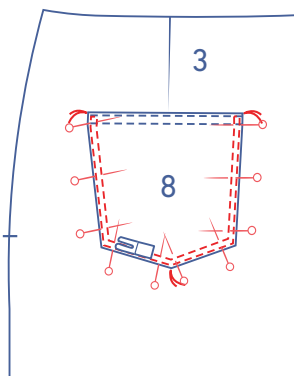
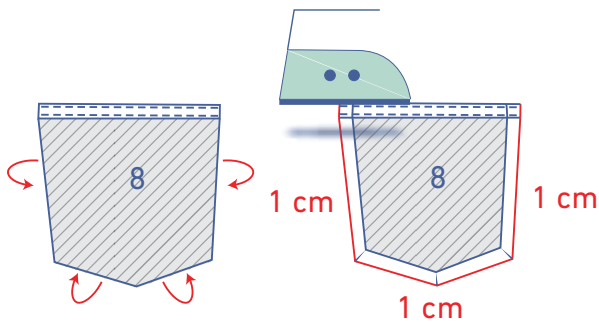
Press the top of the pocket back (8) at the V notches towards the wrong side and open back out.



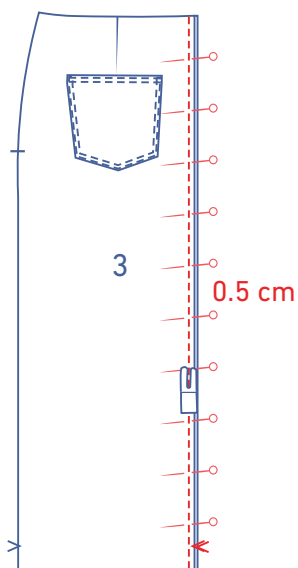
Fold the raw edge to the pressed fold line and then fold over again. Edgestitch into place. Topstitch next to the first row of stitching at presser foot width.



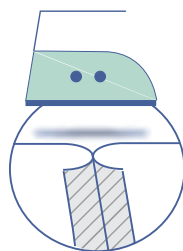
Press the other ends 1 cm over towards the wrong side.



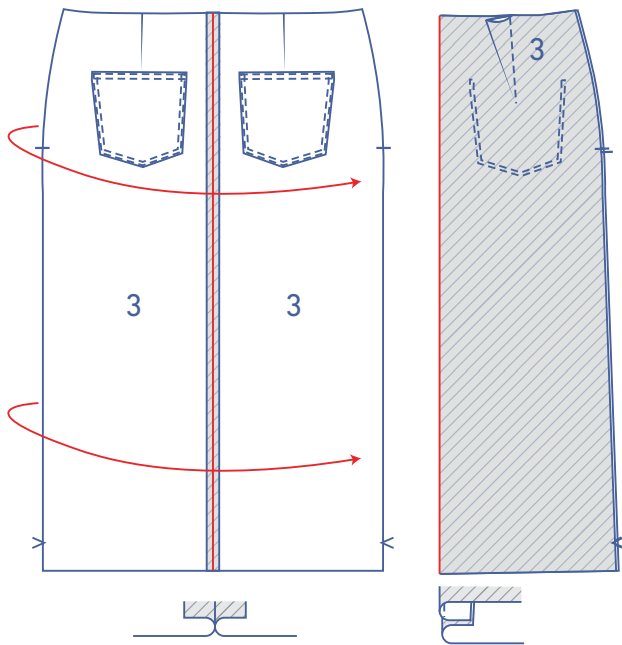
Pin the pocket to the back where indicated. Edgestitch into place and topstitch next to the first row of stitching at presser foot width. Finish with horizontal reinforcement stitching between the two lines of topstitching at the top corners of the pocket.



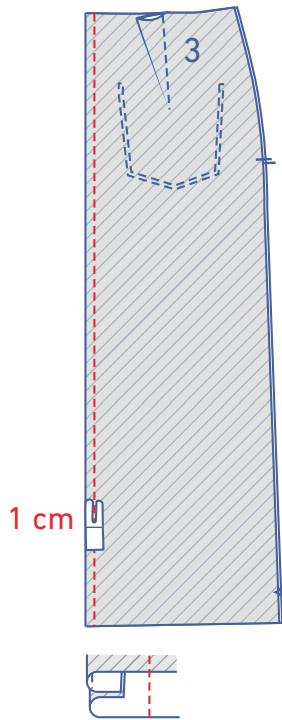
Pin the CB seam 0.5 cm from the raw edge with the wrong sides facing each other, and sew together.



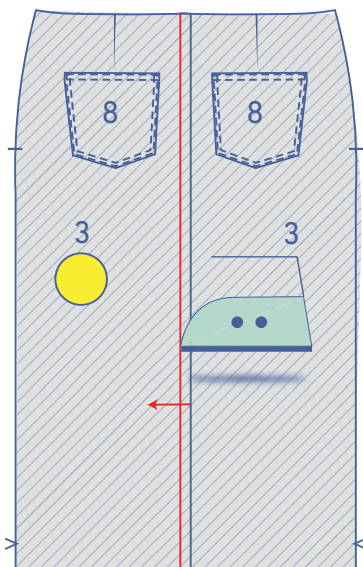
Press the seam allowance open.



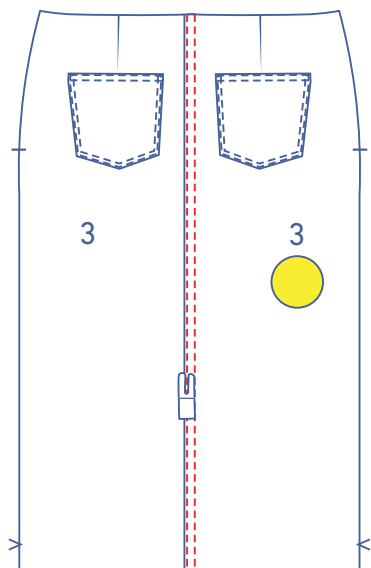
Fold the skirt in half by the seam, with the right side of the fabric facing inwards.



Sew 1 cm from the edge.



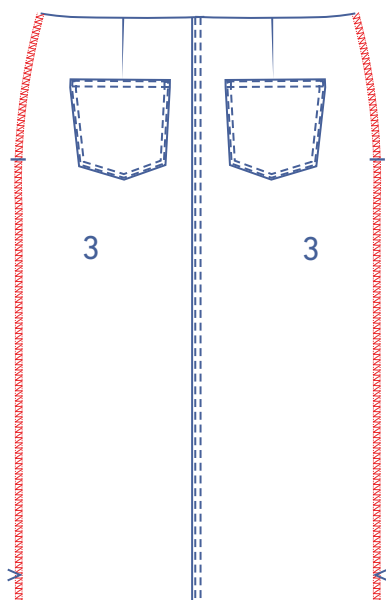
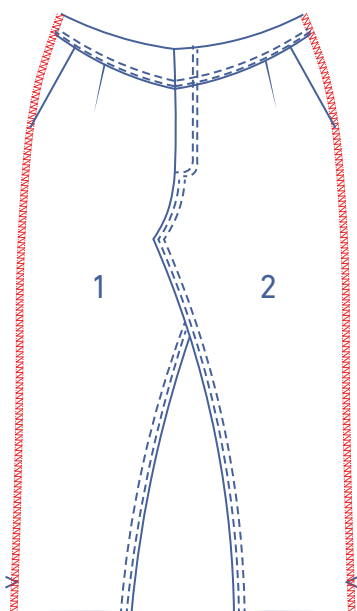
Press the seam allowance towards the RB.

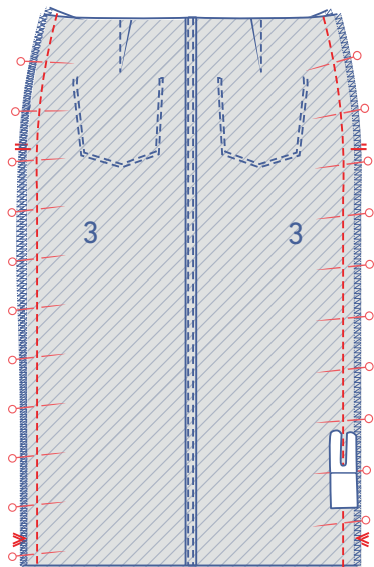


Sew two lines of topstitching right next to the seam.

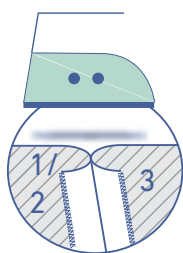
7

Finish the raw edges of the front and back where indicated with overlock stitching.





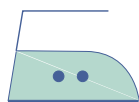
Pin and sew the side seams together, matching the markings.



Press the seam allowance open.



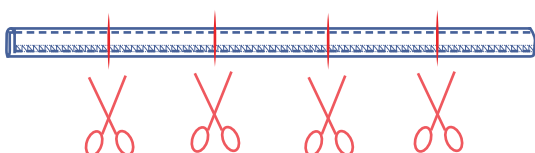
Finish 1 long end of the belt loops (12) with overlock stitching.



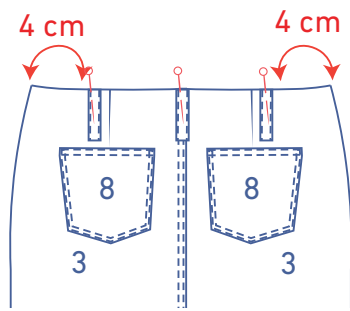
Press the unfinished end towards the wrong side and press the overlocked side over this.



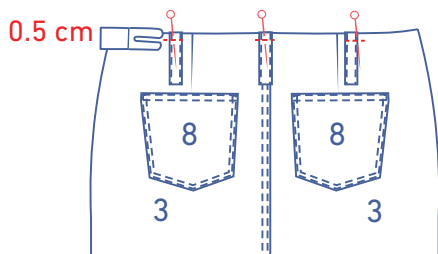
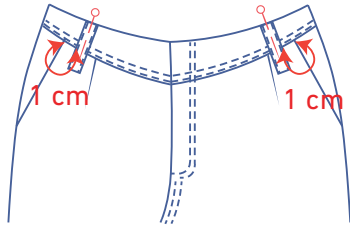
Sew into place right next to the edge of both ends.



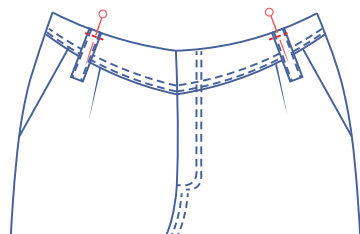
Cut into 5 equal pieces.



Pin one short side of each of the 5 belt loops to the waistline. On the back: one to the CB and one each at 4 cm from each side seam. On the front: 1 at 1 cm from each pocket opening.



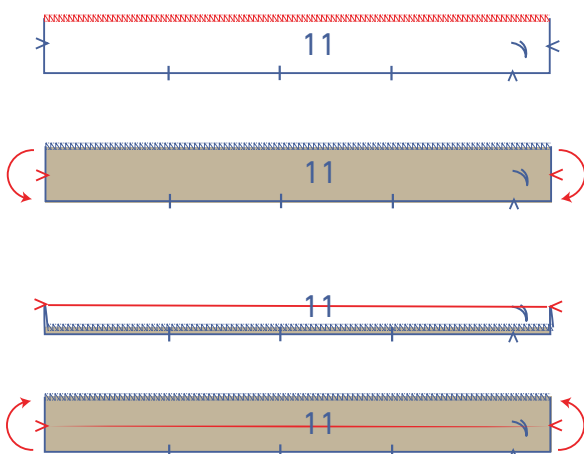
Sew into place at 0.5 cm from the top.



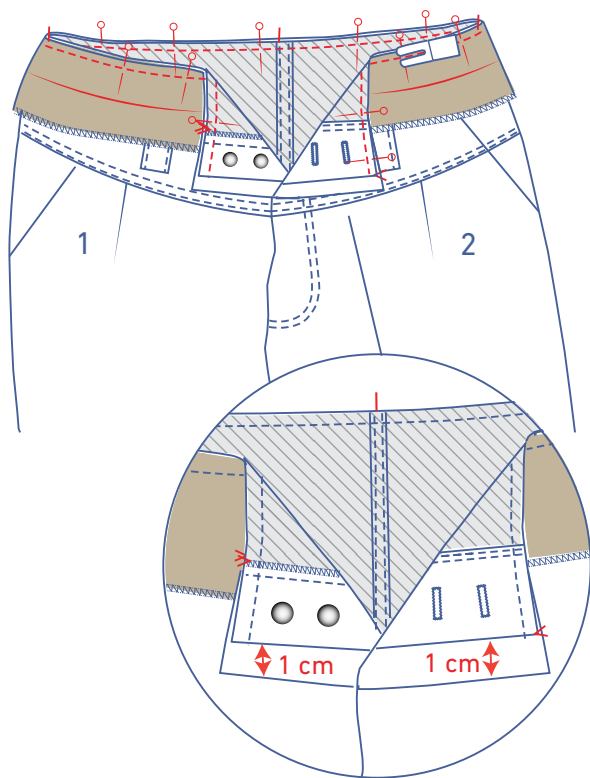
9

Finish the long end of the waistband (11) with overlock stitching where indicated.

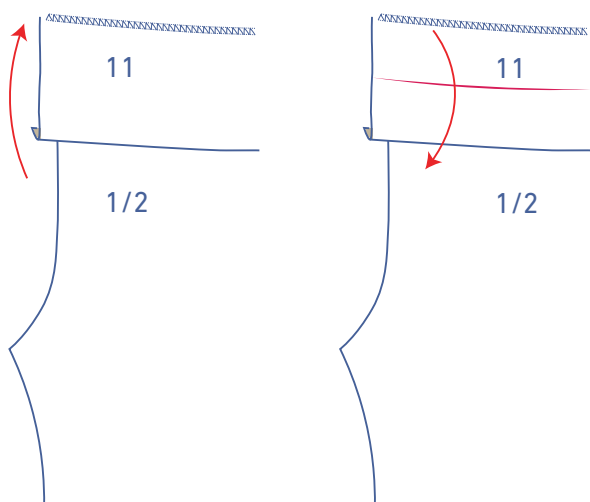
Press the waistband in half vertically, wrong sides together.



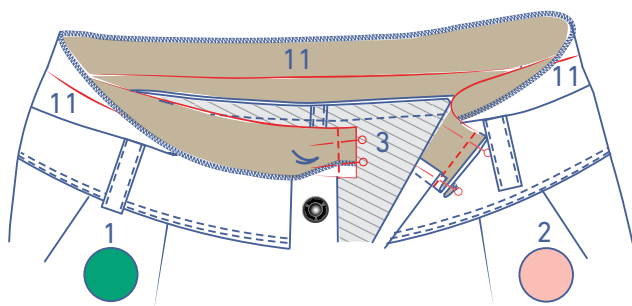
Open back out.



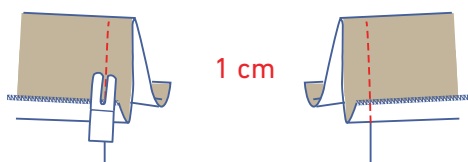
Pin the notched side of the waistband to the top of the skirt, making sure that the notches and side seams match. Sew into place. The short ends of the waistband should extend 1 cm past the finished CF on both sides.

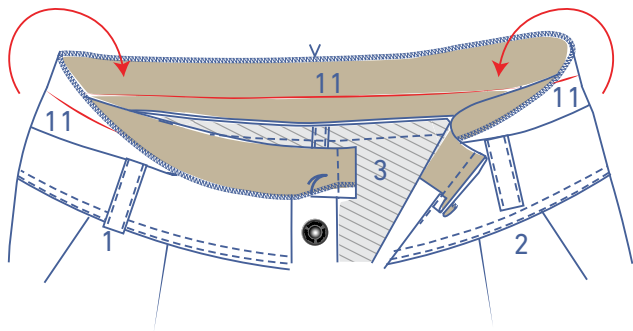


Open the waistband all the way out. Then, fold the overlapped top of the waistband back down along the fold line so that the right sides of the waistband are touching.

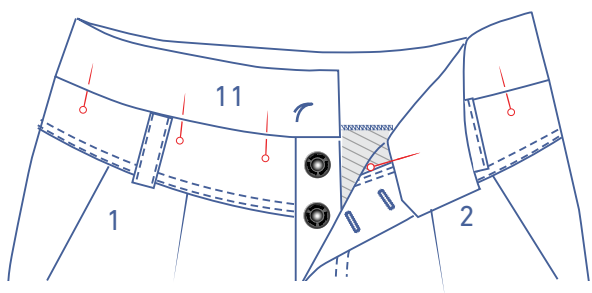
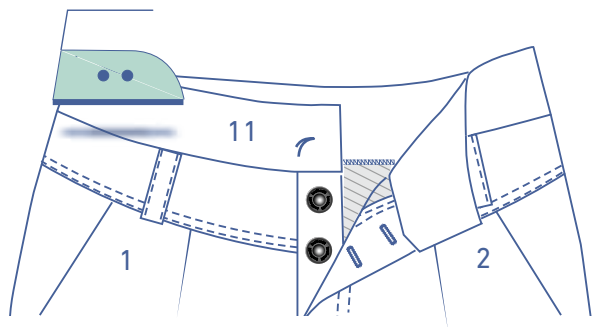


Sew the short ends closed.

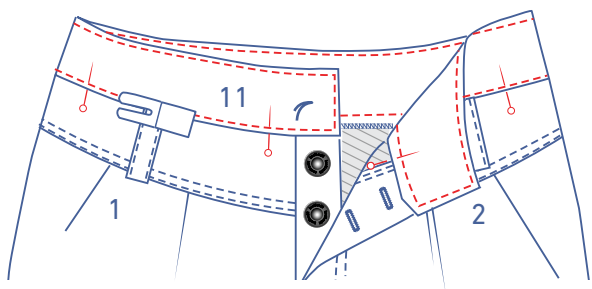




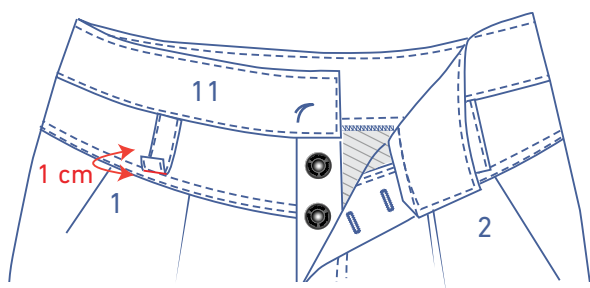
Turn the waistband the right way out, then press neatly flat.



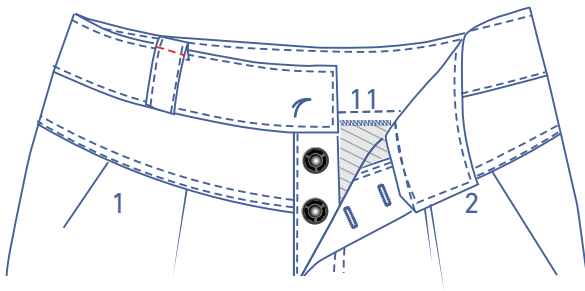
Pin the front and back of the waistband together along the right side of the garment.



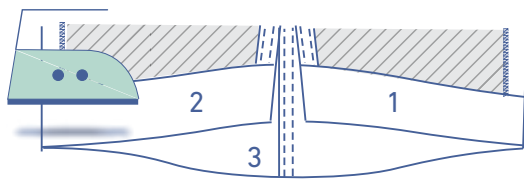
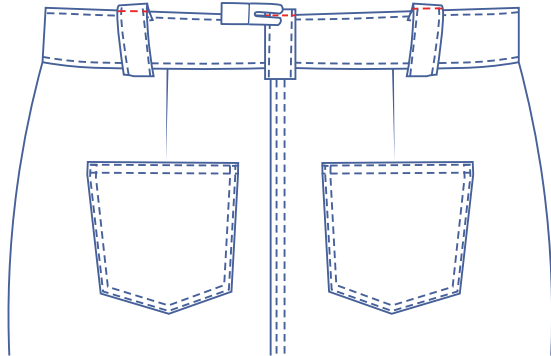
Sew the waistband into place all the way around.



Fold the top end of each belt loop 1 cm over towards the wrong side.

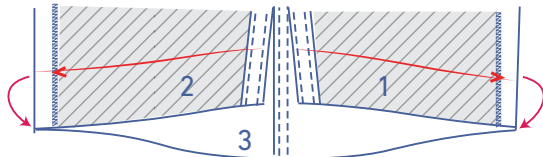


Sew the top of the belt loops into place right next to the edge.

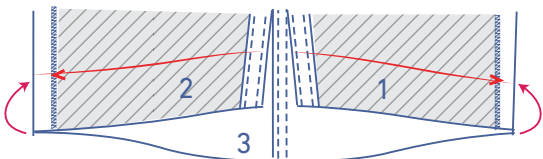


10

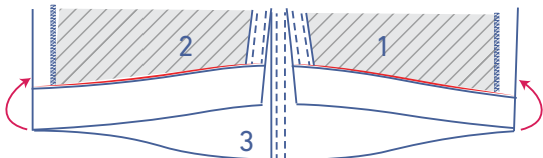
Press the hem allowance over at the V notches and then open back out.



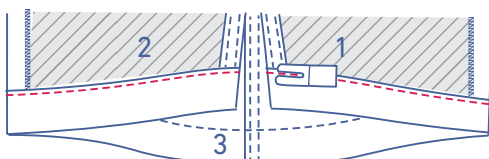
Place the raw edge against the fold line.

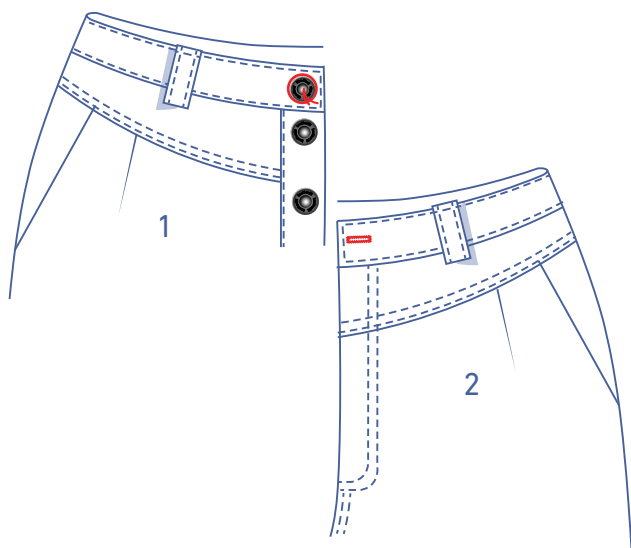


Fold over again.



Sew the hem allowance into place right next to the seam.





Attach the jeans button to the waistband on the RF side and make a horizontal buttonhole across from this on the waistband of the LF side.