



Tammy by Fibre ood

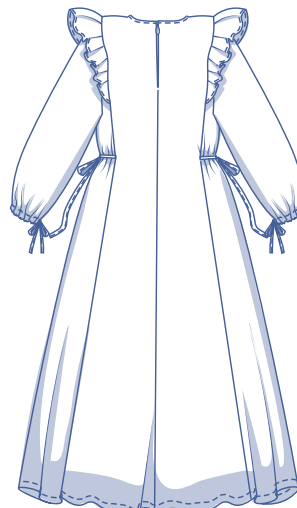
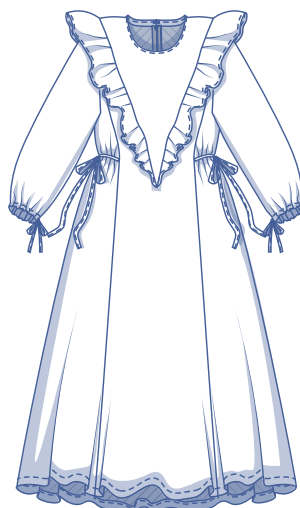
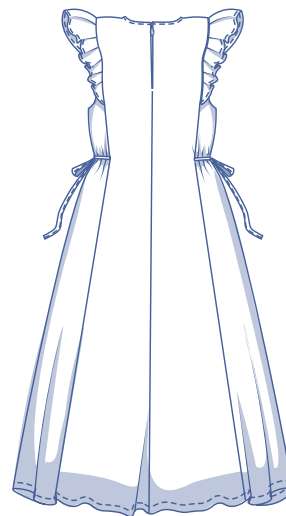
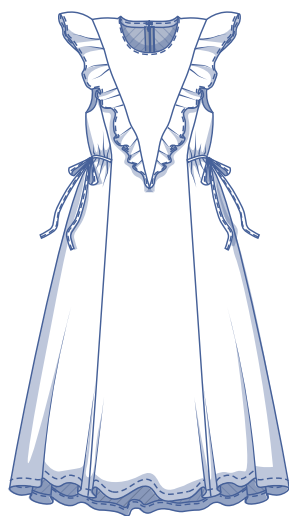
Tammy by Fibre Mood



XS - XXXL

Tammy is love at first sight and reminds us of the [Edith](#) blouse, [Paulette](#) blouse, and [Rosie](#) dress. This dress (or pinafore, if you like!) needs little introduction with its sleek A-line cut and V-shaped ruffled bodice detail. The ruffle draws attention to the waist, and the ties in the side panels give the option for extra waist definition. You've got options galore – make Tammy a pinafore or a dress with tied 3/4-length sleeves. What do you think...mini, midi, or maxi?

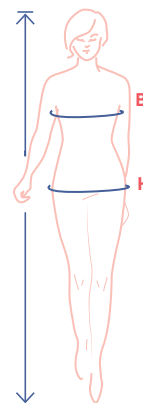
Tammy's neckline has a clean bias tape finish. A concealed zip down the back adds the final touch. This dress is well worth the time investment.



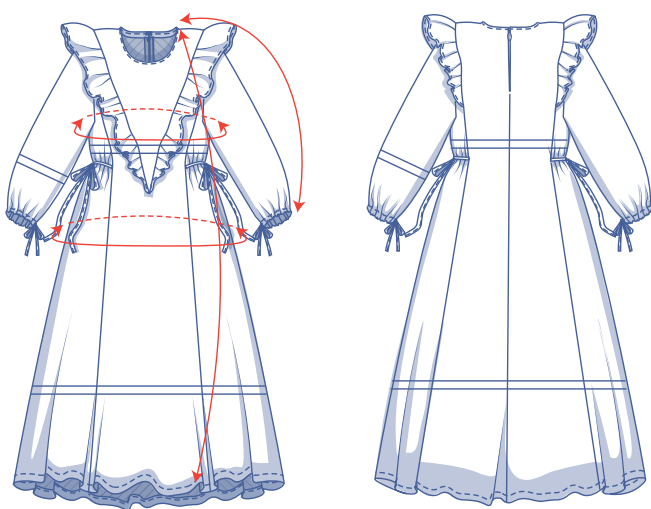
size chart (in inches)

size	XS		S		M		L		XL		XXL		XXXL		
	0	2	4	6	8	10	12	14	16	18	20	22	24	26	28
body height	5' 25"	5' 38"	5' 45"	5' 48"	5' 51"	5' 54"	5' 58"	5' 61"	5' 64"	5' 64"	5' 64"	5' 64"	5' 64"	5' 64"	5' 64"
B (bust)	29.9	31.5	33.1	34.6	36.2	37.8	39.4	40.9	43.3	45.7	48	50.4	52.8	55.1	57.5
H (hips)	33.9	35.4	37	38.2	39.4	40.6	41.7	42.9	45.3	47.2	49.2	51.2	53.1	55.1	57.1

Select a size based on your **bust measurement**. If your hip measurements are wider than those in the size chart, check the hip measurements in the chart below to see if there is enough room or whether the pattern needs to be altered. It's easy to do. When tracing the pattern, simply trace from the line of one size to the line of the other.



pattern measurements (in inches)



— shorten or lengthen the pattern here

This chart's measurements are the pattern measurements based on the fabric type and serve as a reference. **Ease has been added to the width measurements (on top of the exact body measurements) for a more comfortable fit. Tammy is designed to have a loose fit.**

size	XS	S	M	L	XL	XXL	XXXL
length	47.75	48.25	48.75	49.25	50.25	50.75	51.5
sleeve length*	24	24.75	25.25	26	26.5	27.25	28
bust	36.25	39.25	42.5	45.5	49.25	54	58.5
hips	52	55	58	61	65	69.5	74.25

* Including the shoulder length.

Compare the stated lengths to the measured or desired lengths. **Lengthen** or **shorten** the dress and/or the sleeves by cutting the pattern pieces at the indicated double lines. Then either increase the distance between the cut pieces by the desired amount (to lengthen) or overlap the pieces (to shorten). Make sure that the CF and CB lines and the side seams are always straight.

IMPORTANT

Adjust the amount of fabric to be used based on these alterations.

notions



- Thread
- Concealed zip: 9"
- Fabric: see table

fabric use		XS	S	M	L	XL	XXL	XXXL
fabric width 43"	yd	4 ½	5	5 ¼	5 ½	6 ½	6 ¾	7
fabric width 55"	yd	3 ¼	3 ¼	3 ½	3 ¾	3 ¾	4 ¾	5

The corresponding fabric layout can be found on page 6 of these sewing instructions.

fabric advice



A soft drape fabric, e.g. woven viscose or chambray, will give the ruffle a graceful, gentle look. That keeps the volume to a minimum. A stiff fabric, e.g. fine wale corduroy, velvet, poplin, broderie anglaise, and lyocell (semi-stiff), will pump up the volume, adding 'wings'.



MEASURE

twice

&

CUT

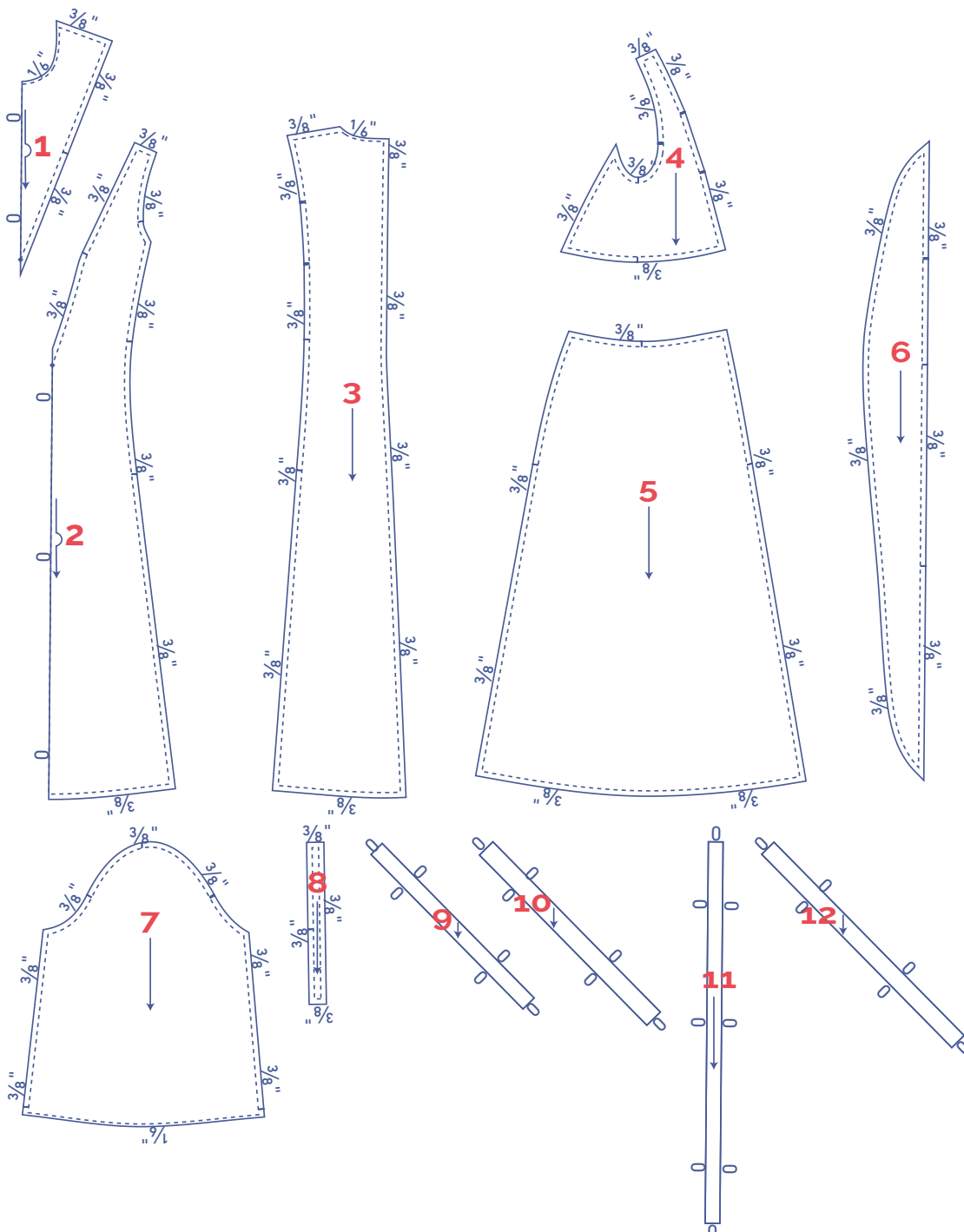
once

pattern pieces & seam allowances (in inches)

To sew the garment as described in the instructions, draw the illustrated seam allowances around the paper pattern pieces before cutting them out. If you are using a PDF pattern, the pattern can be printed with or without seam allowance.

To find out more, watch the [video](#).

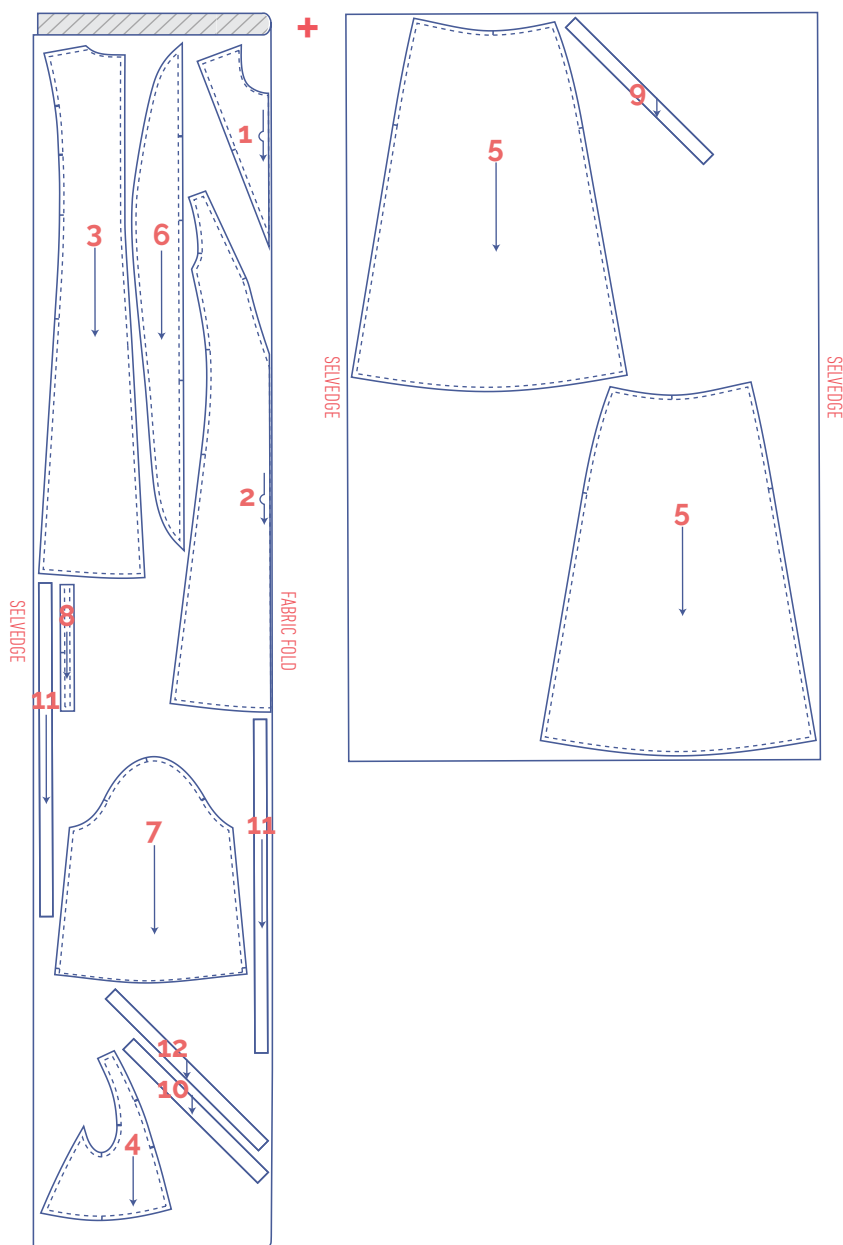
1. yoke front: 1x on fabric fold
2. front: 1x on fabric fold
3. back: 2x
4. top side panel: 2x
5. bottom side panel: 2x
6. ruffle: 2x
7. sleeve: 2x
8. casing: 2x
9. bias tape neck: 1x
10. bias tape sleeve: 2x
11. tie: 4x
12. bias tape armhole: 2x (only for the sleeveless version)



fabric layout – solid fabrics

fabric width 43"

XS - S



Important!

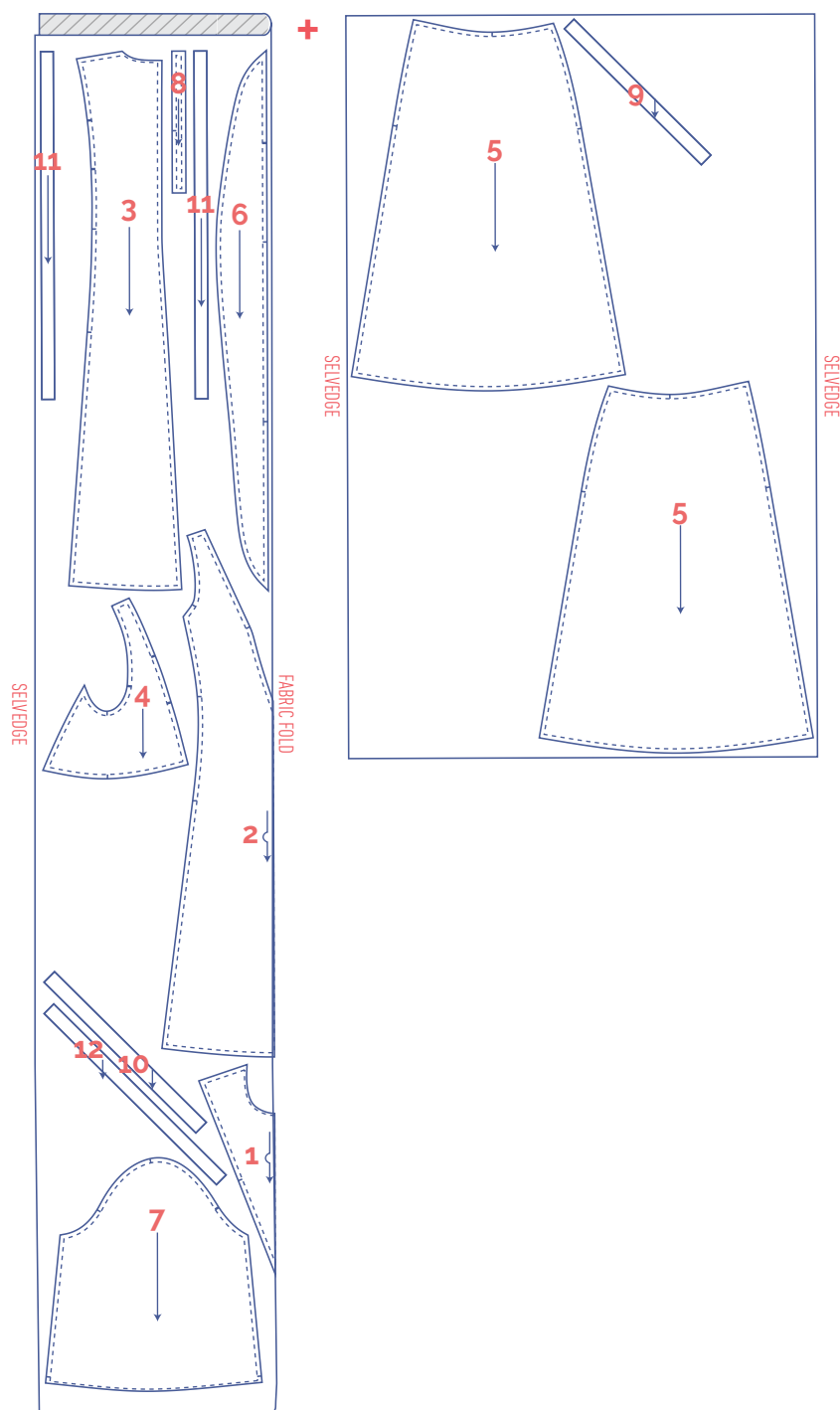
Because the fabric is opened out as a single layer, you also need to cut mirror images of pattern piece 5. That's because you need left and right side panels.

marking pattern pieces

	Notch the pattern paper and fabric at the following points
	single notch
	double notch
∨	V-notch/fabric fold

	Mark the following centre points with marking thread
	centre point

M - L



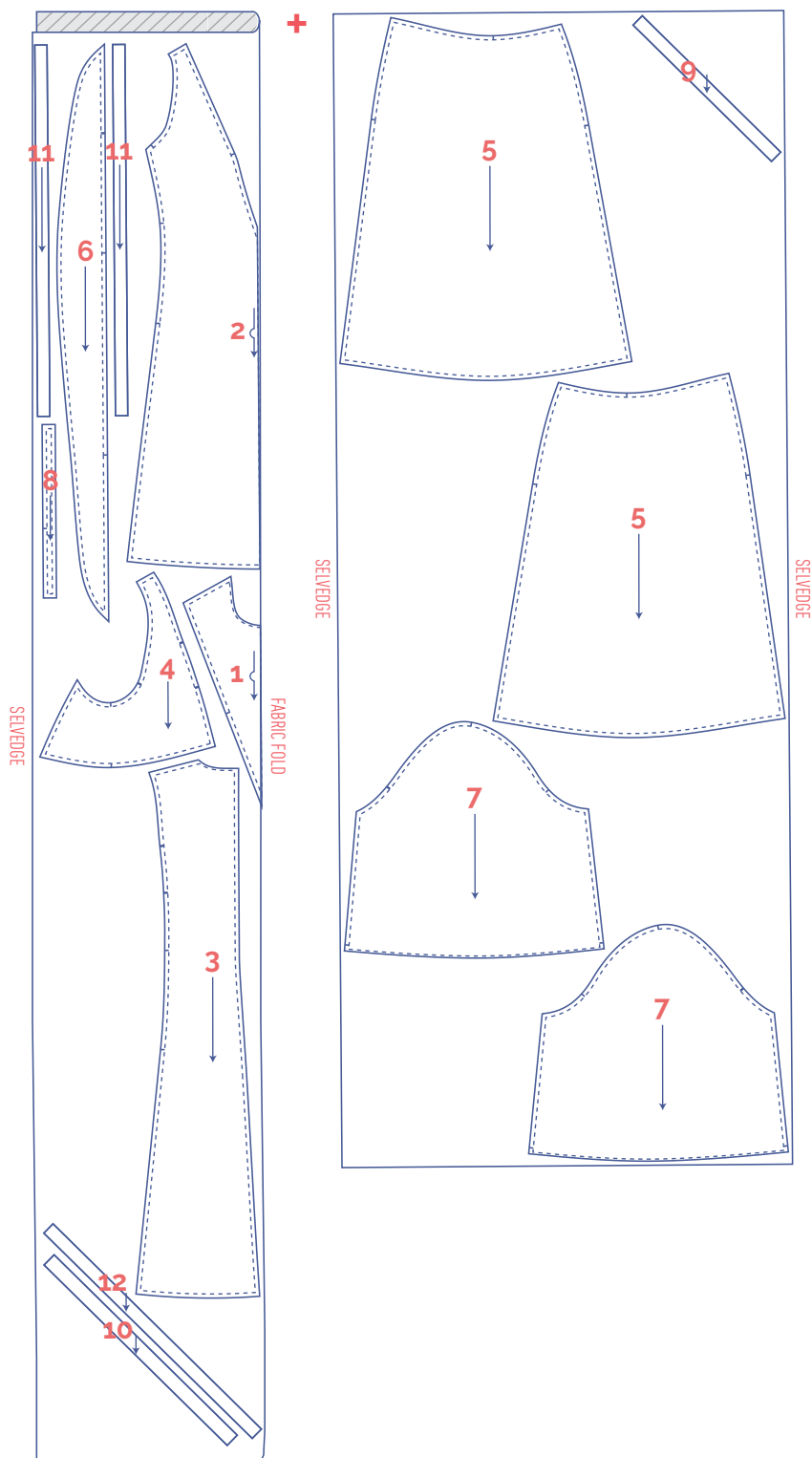
Important!

Because the fabric is opened out as a single layer, you also need to cut mirror images of pattern piece 5. That's because you need left and right side panels.

marking pattern pieces

	Notch the pattern paper and fabric at the following points
I	single notch
II	double notch
V	V-notch/fabric fold

	Mark the following centre points with marking thread
	centre point



Important!

Because the fabric is opened out as a single layer, you also need to cut mirror images of pattern piece 5 and 7.

marking pattern pieces

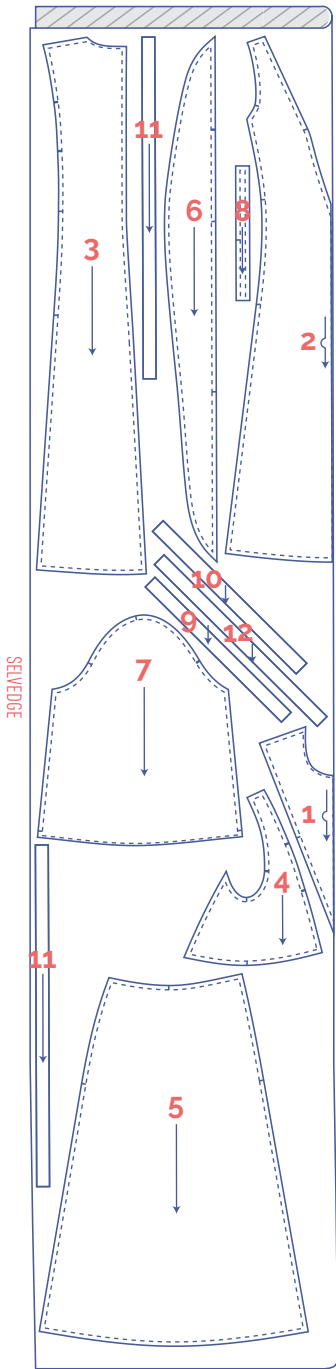
	Notch the pattern paper and fabric at the following points
I	single notch
II	double notch
V	V-notch/fabric fold

	Mark the following centre points with marking thread
	centre point

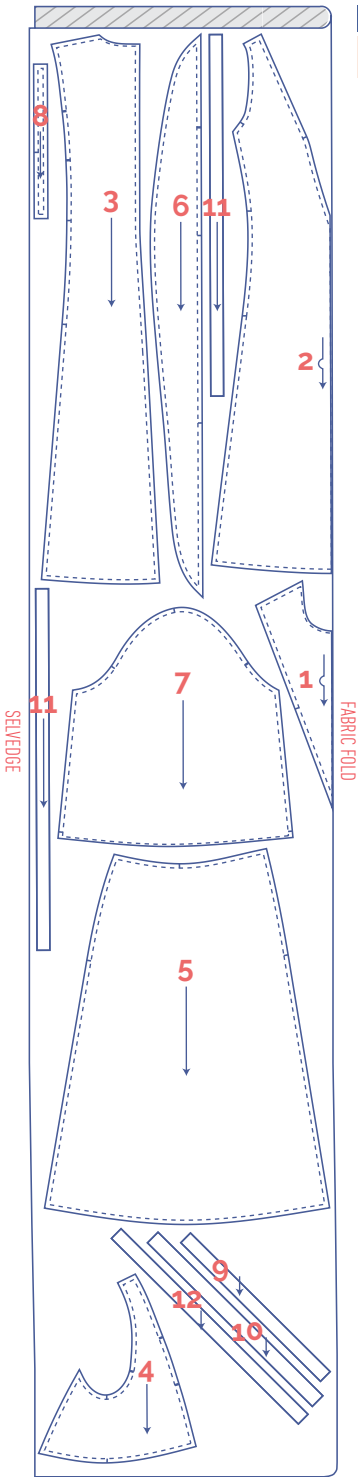
fabric layout – solid fabrics
 fabric width 55"

XS - M

L - XL









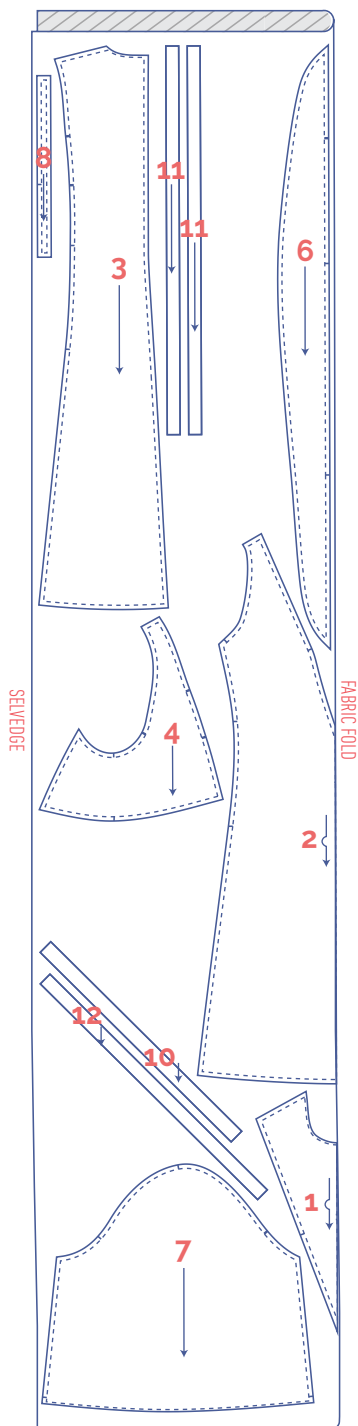
Important!
 You only need pattern piece 9 once.



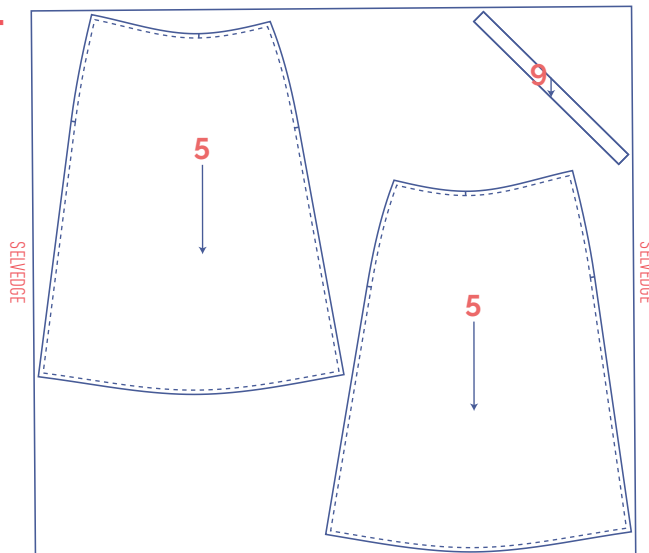
Important!
 You only need pattern piece 9 once.

marking pattern pieces

 Notch the pattern paper and fabric at the following points	 mark the following centre points with marking thread
 single notch	 centre point
 double notch	
 V-notch/fabric fold	



+



Important!

Because the fabric is opened out as a single layer, you also need to cut mirror images of pattern piece 5. That's because you need left and right side panels.

marking pattern pieces

	Notch the pattern paper and fabric at the following points
	single notch
	double notch
V	V-notch/fabric fold

	mark the following centre points with marking thread
	centre point

sewing instructions



The method used to finish the seams depends on the fabric used. The pieces are always sewn together with the right sides of the fabric facing, unless stated otherwise.

F front

B back piece

CF centre front

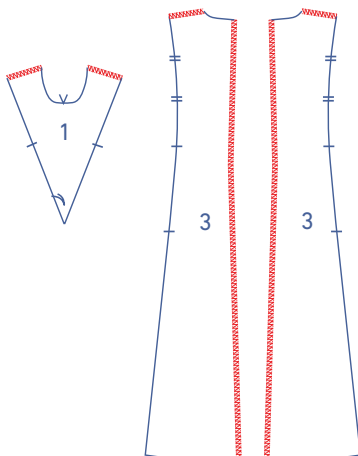
CB centre back

RBP right back 

LBP left back 

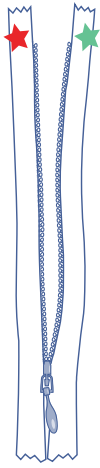
 right side

 wrong side

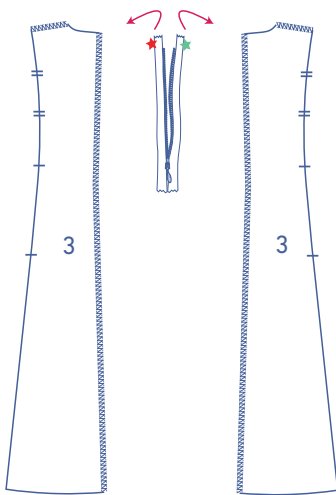


1

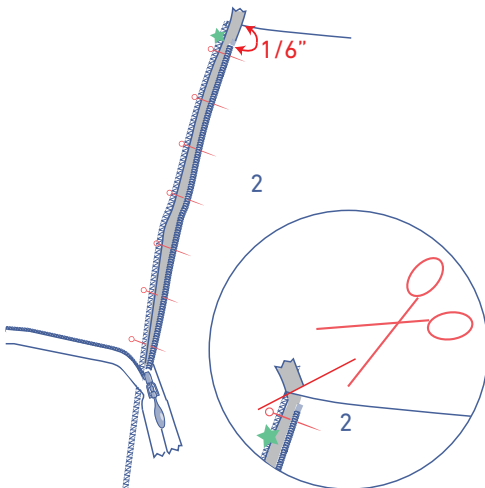
Finish the indicated ends of the yoke front (1) and back (3) with overlock stitching.



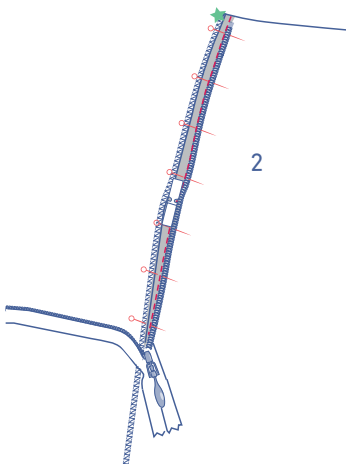
Place the concealed zip in front of you with the right side facing up. Open the zip.

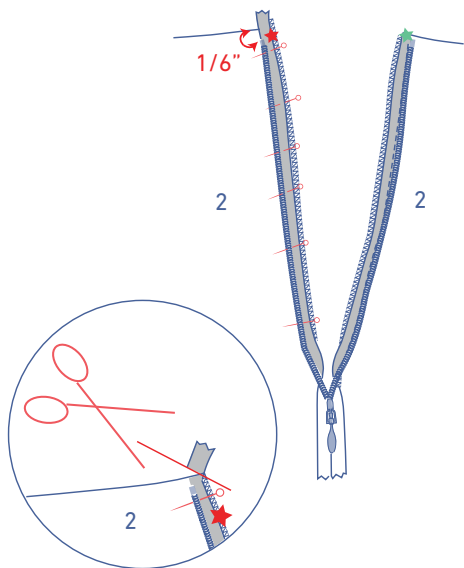


Place both back pieces in front of you, also with the right sides facing up.

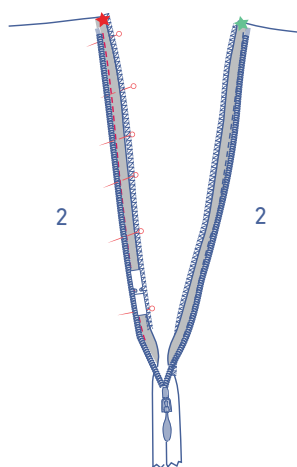


Fold the green star zip tape over to the right and pin it to the CB line. The zip tape lines up with the edge of the fabric, and the zip teeth are 1/6" under the raw edge of the neckline. Trim the top of the zip tape to match the raw edge of the neckline and prevent any bunching. Sew into place with the concealed zipper foot.

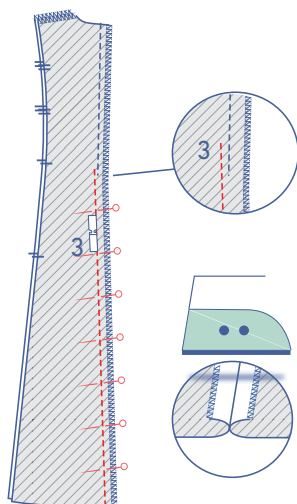




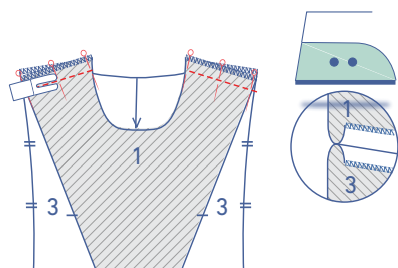
Fold the red star zip tape over to the left and pin it to the CB line. The zip tape lines up with the edge of the fabric. The zip teeth are 1/6" under the neckline's raw edge. Trim the top of the zip tape to match the raw edge of the neckline and prevent bunching. Sew into place with the concealed zipper foot.

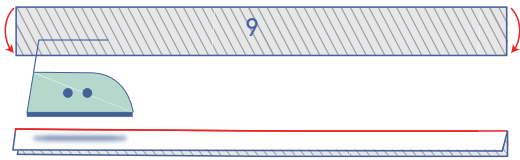


Close the zip and sew the rest of the CB seam with the zipper foot. Start sewing slightly above and right next to your previous stitching (where you sewed the zip tapes). Press the seam allowance open.



Pin and sew the shoulder seams of the bodice front and the back together. Press the seam allowance open.

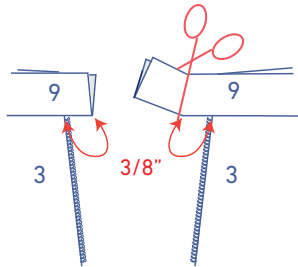
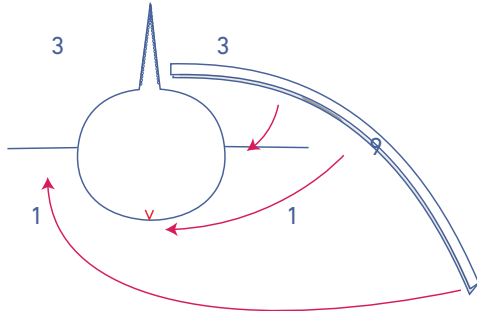




2

Fold the neckline bias tape (9) in half with the long ends together and the wrong sides of the fabric touching.

First, pin raw edges of the bias tape to the right side of the neckline to determine the correct length of the bias tape. Trim the excess, but leave an extra inch of seam allowance at both short ends. The fabric is cut on the bias, which means the length of the tape will differ depending on the fabric. Unpin the bias tape.

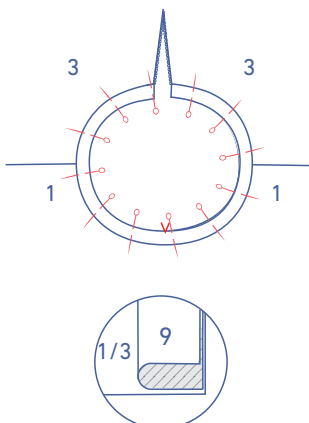


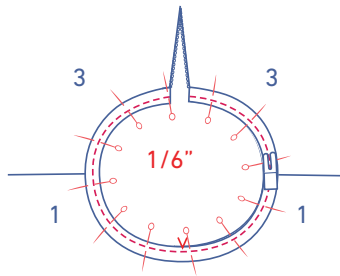
Now fold the bias tape in half along the long edges, right sides together. Sew the short ends closed.



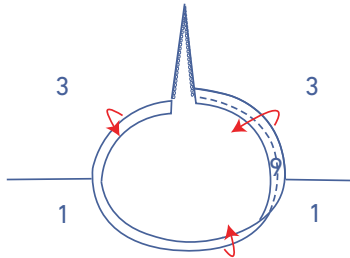
Turn the bias tape the right way out.

Re-pin the bias tape to the right side of the neckline. The finished ends match the finished CB lines.

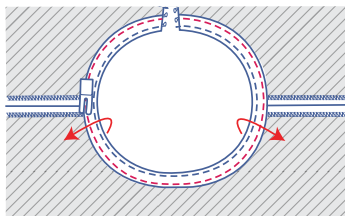
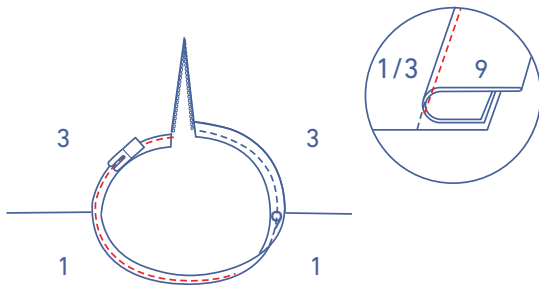




Sew into place at 1/6".



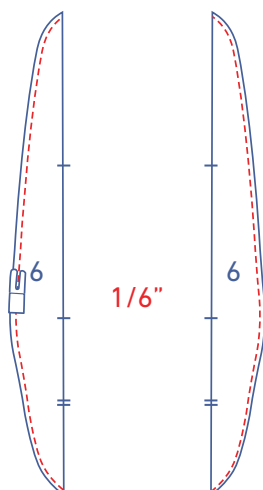
Fold over the bias tape and sew to the seam allowance underneath, anchoring it next to the seam.

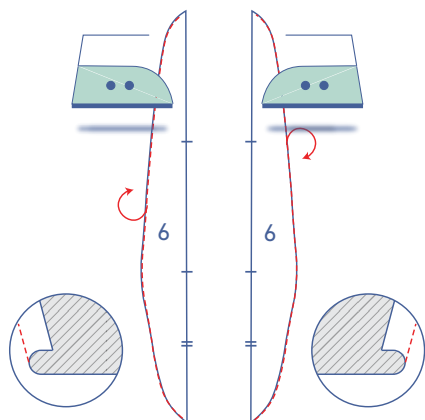


Fold the bias tape all the way over to the wrong side and edgestitch into place.

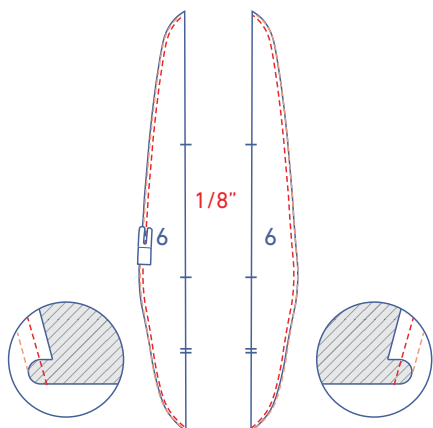
3

Finish the bottom of the ruffle (6) as follows: sew at 1/6" from the unnotched raw edge.

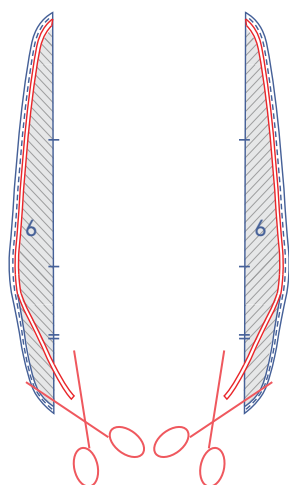




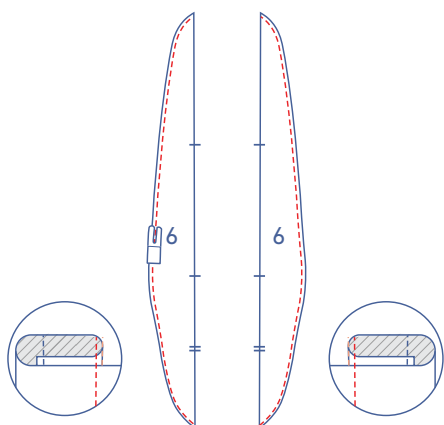
Press the raw edge towards the wrong side along the stitch line.



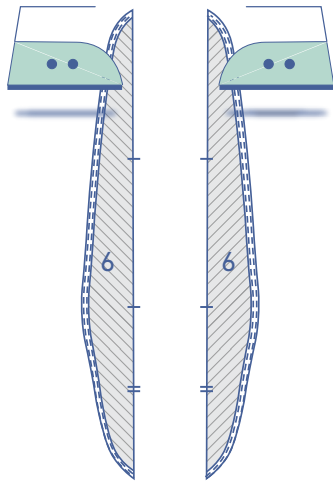
Then sew at 2 mm from the edge.



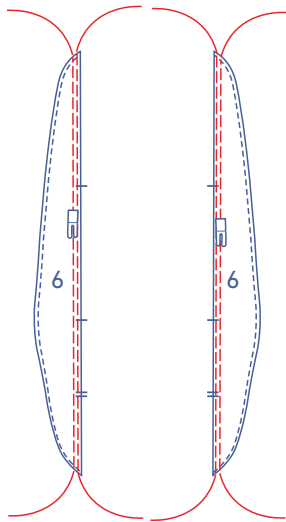
Trim the excess seam allowance on the wrong side of the ruffle. Appliqué scissors are useful here if you have them.



Now, fold the edge over to the wrong side for the last time and sew into place.

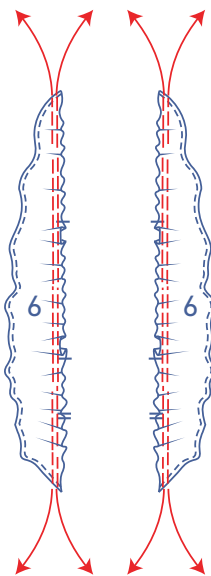


Neatly press along the wrong side.

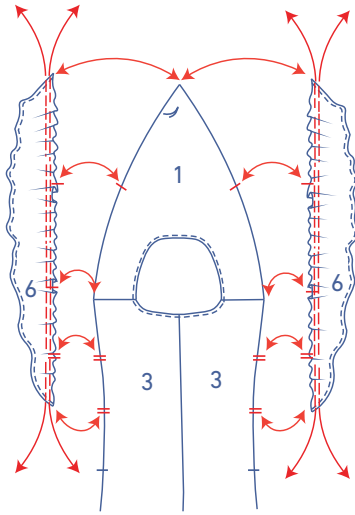


4

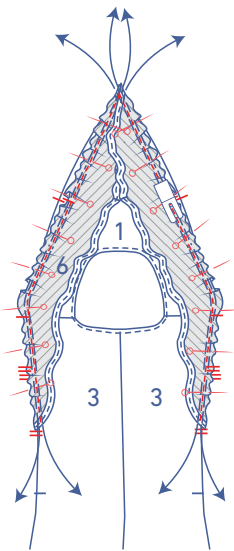
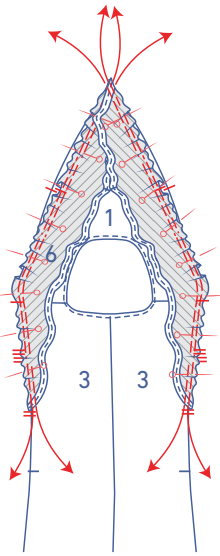
Sew two lines of parallel stitching along the unfinished, raw edge of the ruffle pieces. Use a long stitch at a low thread tension. Leave a length of thread at the start and end of your stitching.



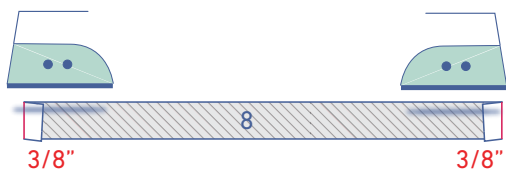
Gently tug the ends of the threads to gather the fabric.



Pin the ruffles to the bodice on both front and the back, distributing the gathers until the markings match.



Tack into place at presser foot width from the raw edge.



5

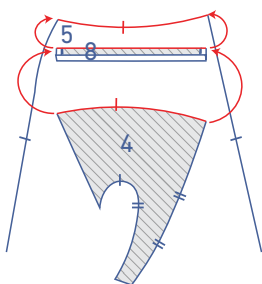
Press $\frac{3}{8}$ " of the short ends of the casings (8) over to the wrong side.



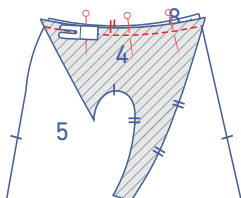
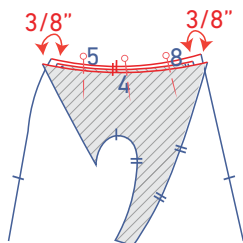
Sew into place right next to the raw edge.



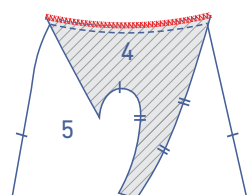
Press $\frac{3}{8}$ " of one long end over to the wrong side.

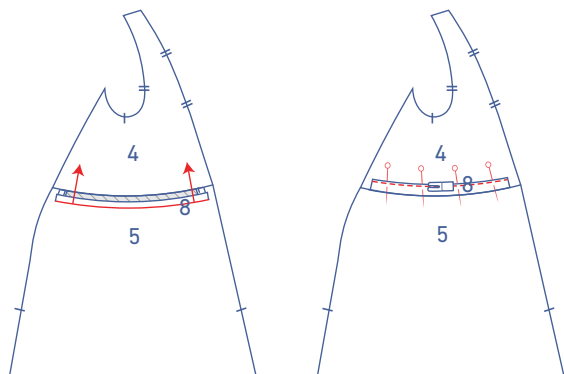


Pin the top side panel (4), bottom side panel (5), and the unpressed long end of the casing together, matching the markings. The casing is sandwiched between the side panels, with the right side touching the right side of the skirt side panel. The bodice side panel and skirt side panel should each extend $\frac{3}{8}$ " past the finished ends of the casing.



Sew into place. Finish the raw edges with overlock stitching.



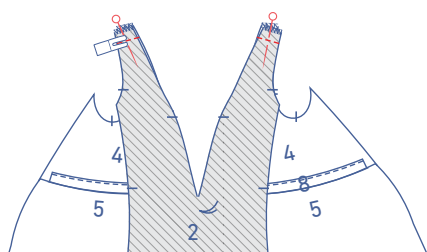
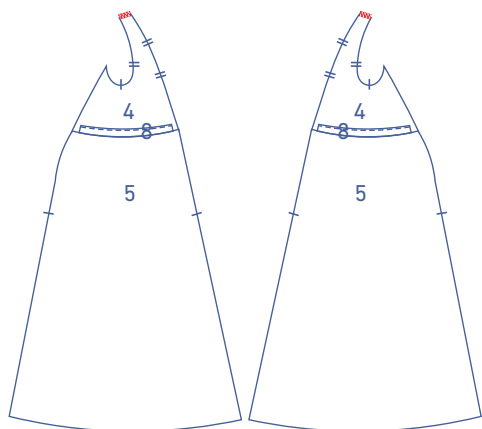
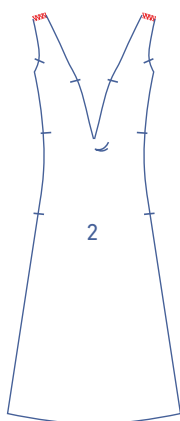


Fold the casing up and pin the pressed long end to the top side panel.

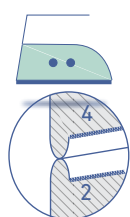
Sew the casing into place right next to the edge.

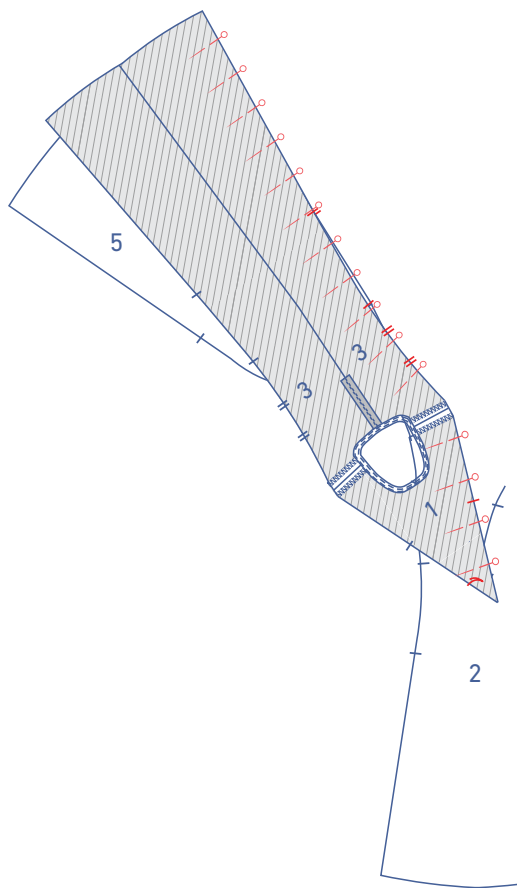
6

Finish the edges of the front (2) and side panel with overlock stitching where indicated.

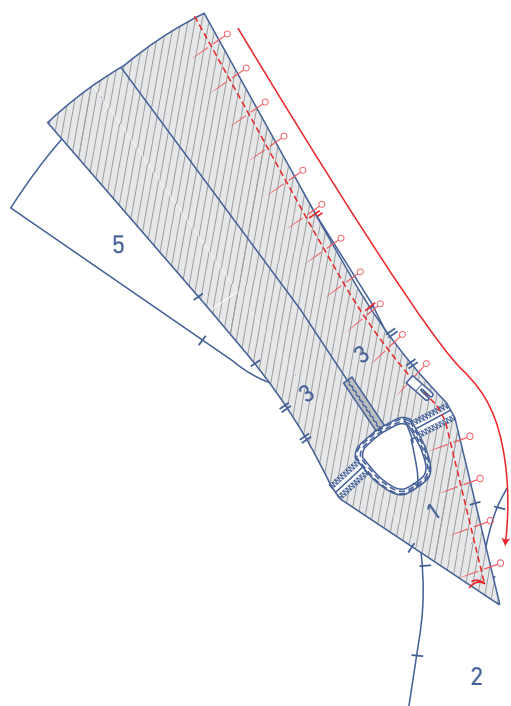


Pin and sew the shoulder seams. Press the seam allowance open.

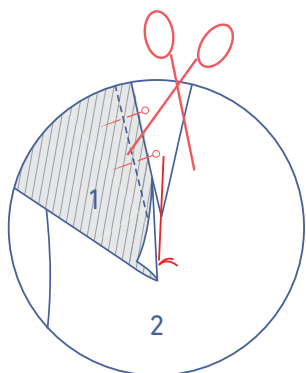




Pin the yoke front + back (1+3) to the front piece + side panel (2+4+5), matching the markings.

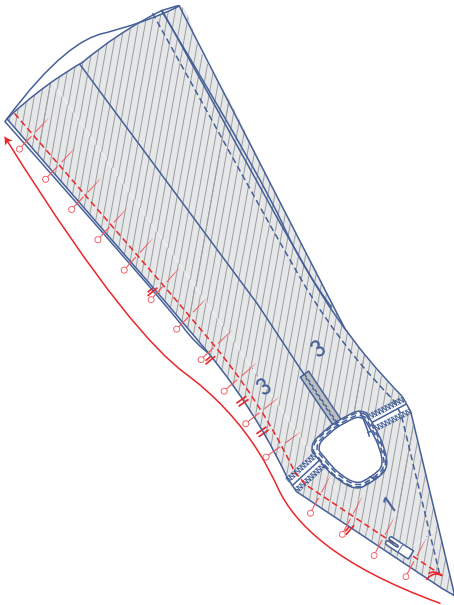


Sew from the hem towards the shoulder seam. Continue sewing up to the marking thread, leaving your needle in the fabric there.

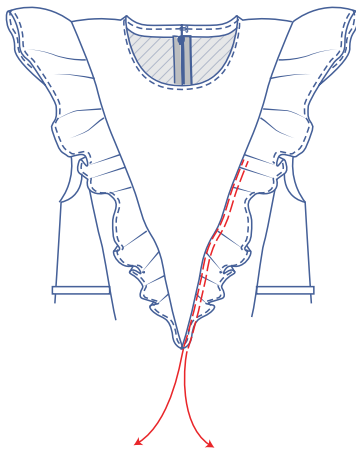


Raise the presser foot. Fold the seam allowance of the yoke front and ruffle over and snip into the seam allowance of the front until just before the marking thread. Lower the presser foot back down.

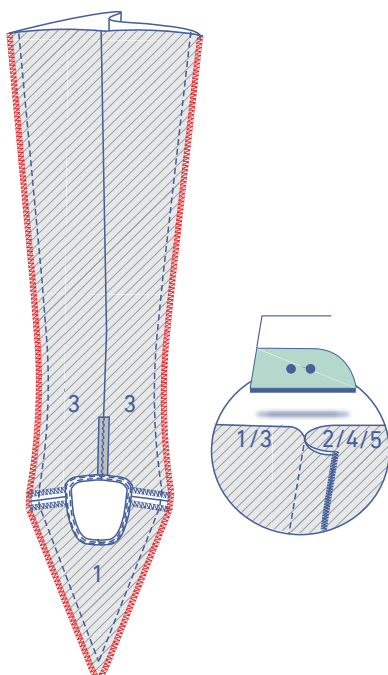
Turn your work, then pin and sew down the other side towards the hem.

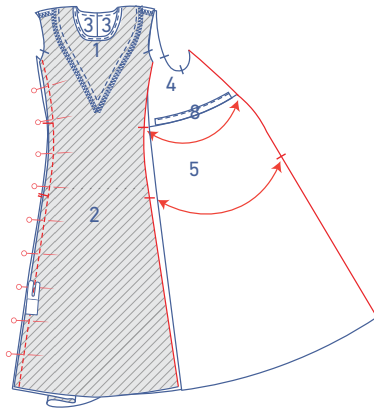


Remove the gathering threads.

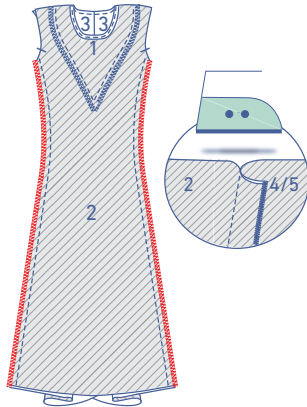


Finish the raw edges with overlock stitching. Press the seam allowance towards the front and side panel.

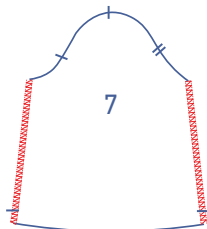




Pin and sew the edge of the side panel (with the single notches) to the front.

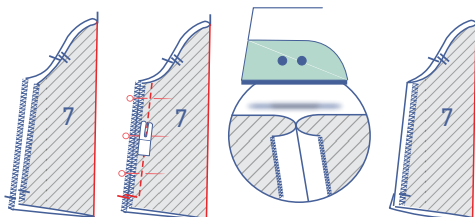


Finish the raw edges with overlock stitching. Press the seam allowance towards the side panel.

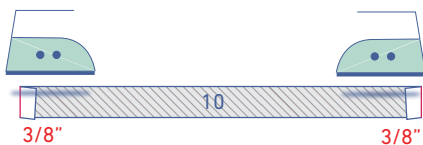


7.1 version with sleeve

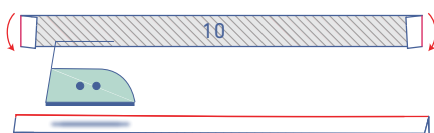
Finish the sleeve sides (7) with overlock stitching.



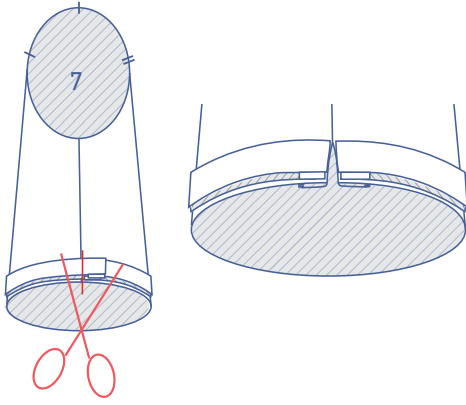
Pin the underarm seam up to the single notch in the hem and sew. Press the seam allowance open. Also, press the seam allowance under the notch towards the wrong side.



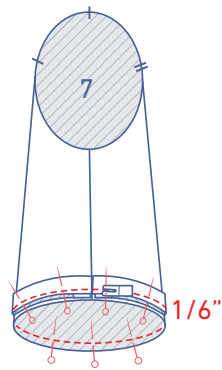
Press $\frac{3}{8}$ " of the short ends of the sleeve bias tape (10) over to the wrong side.



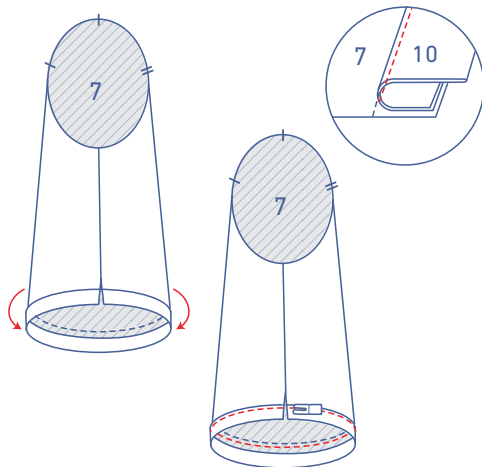
Press the bias tape in half with the long ends together and the wrong sides of the bias tape touching.



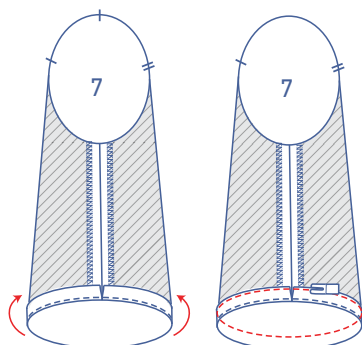
Pin raw edges of the bias tape to the sleeve hem along the right side of the garment. The finished ends of the bias tape should match the pressed edges of the underarm seam. Trim the excess bias tape as needed and tuck $\frac{3}{8}$ " of seam allowance under on either side.



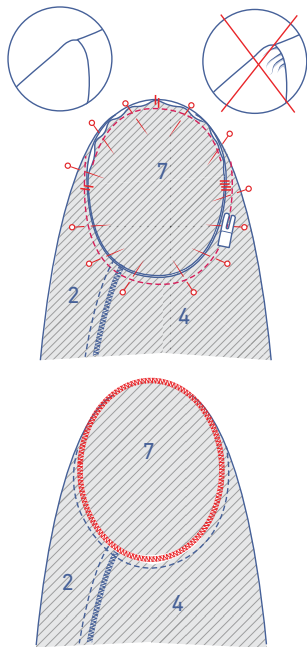
Sew into place at $\frac{1}{6}$ " from the raw edge.



Fold the bias tape and seam allowance over and sew to the seam allowance underneath, anchoring it right next to the seam.



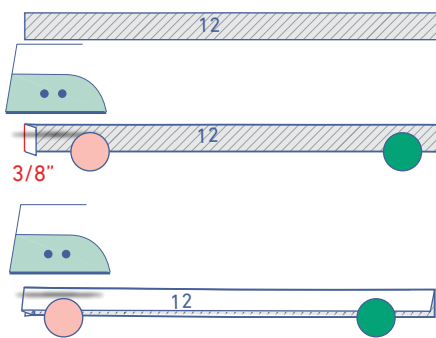
Fold the bias tape all the way over to the wrong side and edgestitch into place.



Pin and sew the top of the sleeve (= sleeve cap) to the armhole, matching the markings. The underarm seam matches the single notch in the bottom of the side panel. Distribute the 'excess' fabric evenly between the other notches.

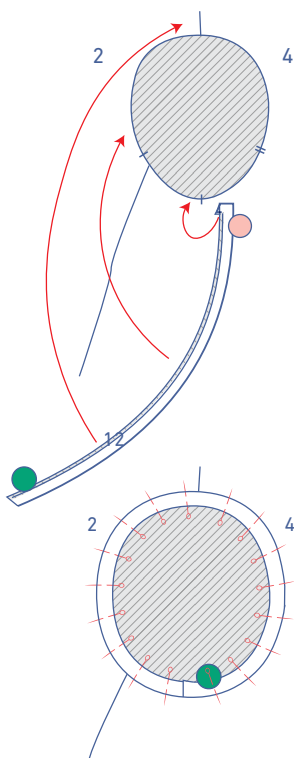
Finish the raw edges with overlock stitching.

7.2 version without sleeve

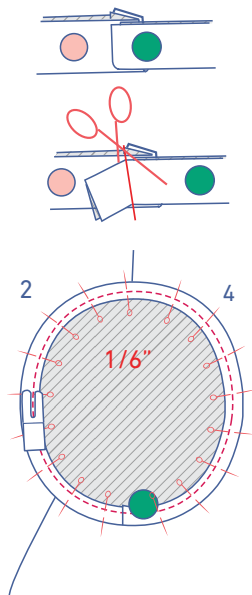


Press $\frac{3}{8}$ " of the short end of the armhole (12) bias tape towards the wrong side. This pressed end has been marked with a pink circle. The unpressed short end has been marked with a green circle.

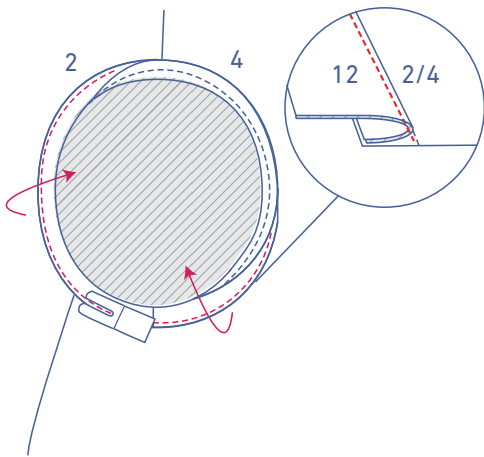
Press the bias tape in half with the long ends together and the wrong sides of the bias tape touching.



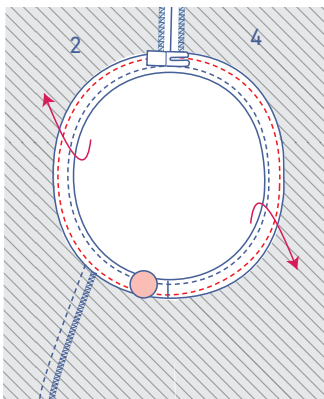
Pin both raw edges of the bias tape to the armhole along the right side of the garment. The folded end matches the notch in the side panel.



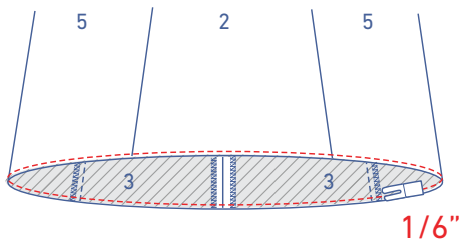
The open end (green circle) of the bias tape sits on top of the folded end. Trim the excess bias tape as needed. Sew into place at 1/6" from the raw edge.



Fold the bias tape over and sew the bias tape to the seam allowance underneath, anchoring it next to the seam.



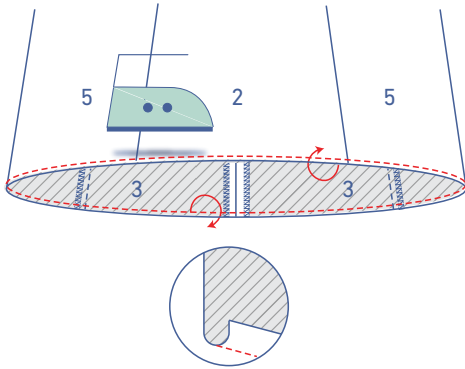
Turn the bias tape up over to the wrong side and edgestitch into place.



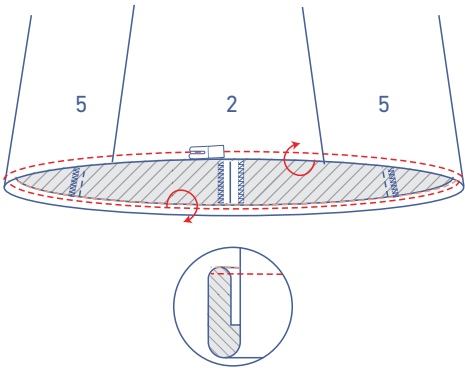
8

Sew all the way around the bottom of the dress at 1/6" from the raw edge.

Then, press the edge over along the stitch line.

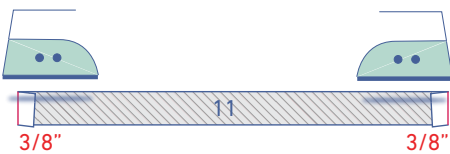


Fold over again towards the wrong side. Edgestitch into place.

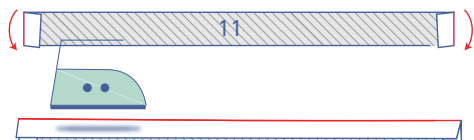


9

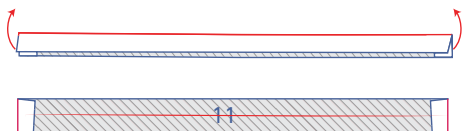
Press each short end of each tie (11) 3/8" over to the wrong side.

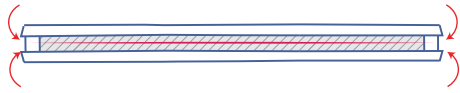


Press the tie in half with the long ends together and the wrong sides of the fabric touching.

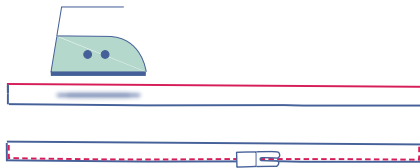


Open back out.

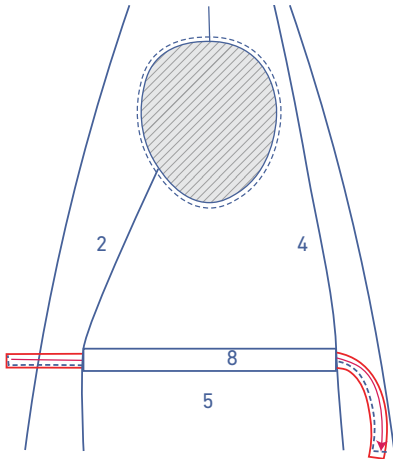




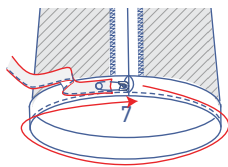
Press the raw edges in to meet the fold line in the middle.



Now, fold in half along the pressed centre line. Edgestitch into place.



Thread the ties through the casing in the waist via the openings in the sides.



Thread the ties through the casing in the sleeve hem via the openings in the underarm seam.

