

# Rupert by Fibre ⚡ood

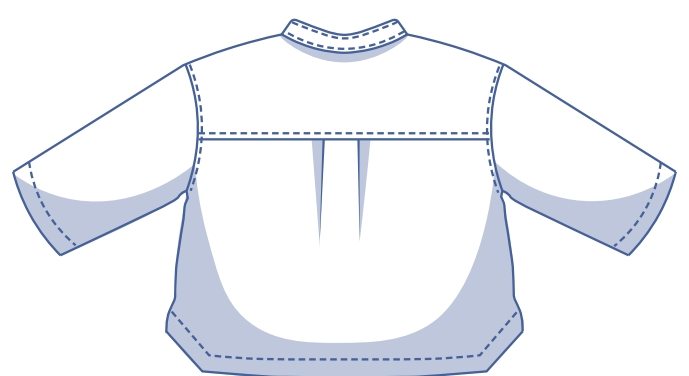
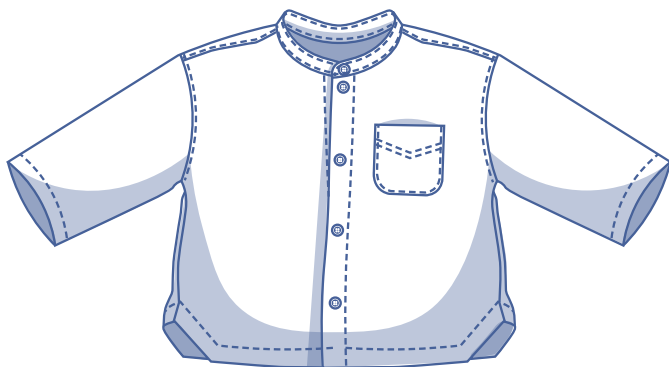


# Rupert by Fibre ood



2 - 14 y

Rupert is casual and cool at the same time. This oversized shirt has a standing collar and a curved-bottom chest pocket with two lines of parallel topstitching. It features a handful of other playful details from an hem line with side slits to a yoke, and a pleat in the middle of the back. Rolling up the sleeves optional ;-)



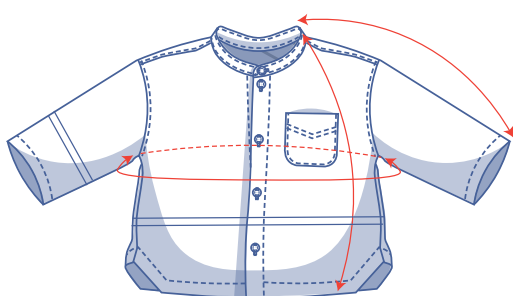
## size chart (in inches)

size	2	3	4	5	6	8	10	12	14
body height	3' 02"	3' 22"	3' 41"	3' 61"	3' 81"	4' 1"	4' 49"	4' 92"	5' 25"
C (chest)	20.5	21.3	22	22.8	23.6	25.2	26.8	28.3	29.9

To select the right size for this pattern, the **chest measurement** should be your guideline (regardless of age or height). Pick the size closest to the actual chest measurements. Next, alter the length of the chosen size based on your child's age or height, listed in the table below.



## pattern measurements (in inches)

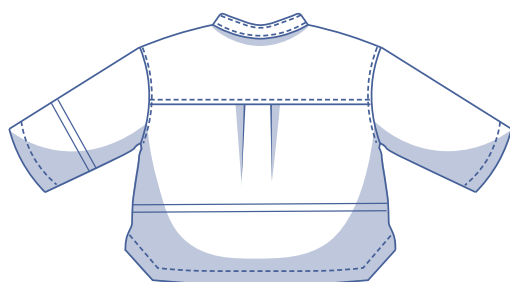


==== shorten or lengthen the pattern here

This chart's measurements are the pattern measurements based on the fabric type and serve as a reference. Ease has been added to the width measurements (in addition to the exact body measurements) for a more comfortable fit. Rupert is designed to be **oversized**. Depending on the preferred cut, you could decide to go a size smaller or larger than the recommended size.

size	2	3	4	5	6	8	10	12	14
length	14.5	15.5	16.4	17.4	18.3	20.2	22.1	24	25.8
sleeve length*	12.1	12.9	13.9	14.9	15.9	17.8	19.7	21.7	23.6
bust	29.3	30.1	31	31.7	32.5	34.1	35.7	37.3	38.8

\* Including shoulder length



Compare the stated lengths to the measured or desired lengths. **Lengthen** or **shorten** the shirt and/or the sleeves by cutting the pattern pieces at the indicated double lines. Then either increase the distance between the cut pieces by the desired amount (to lengthen) or overlap the pieces (to shorten). Make sure that the CF and CB lines and the side seams are always straight.

### IMPORTANT

Adjust the amount of fabric to be used based on these alterations.



## notions



- Thread
- Buttons (Ø 7/16"): see table
- Iron-on interfacing: max. 1/2 yd
- Fabric: see table

size	2	3	4	5	6	8	10	12	14
buttons	5	5	5	5	5	6	6	7	7

fabric		2	3	4	5	6	8	10	12	14
fabric width 43"	yd	1 1/4	1 1/4	1 1/2	1 1/2	1 1/2	1 3/4	2	2 1/4	2 1/2
fabric width 55"	yd	1	1	1 1/4	1 1/4	1 1/4	1 1/2	1 1/2	1 1/2	1 1/2

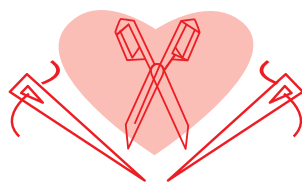
The corresponding fabric layout can be found on page 6 of these sewing instructions.

## fabric advice



There are so many fabrics that work well with the Rupert. Woven fabrics work best though due to the details. Poplin, chambray, Tencel, linen, crêpe, and flannel are excellent choices. Rupert looks great in solid and print fabrics alike.

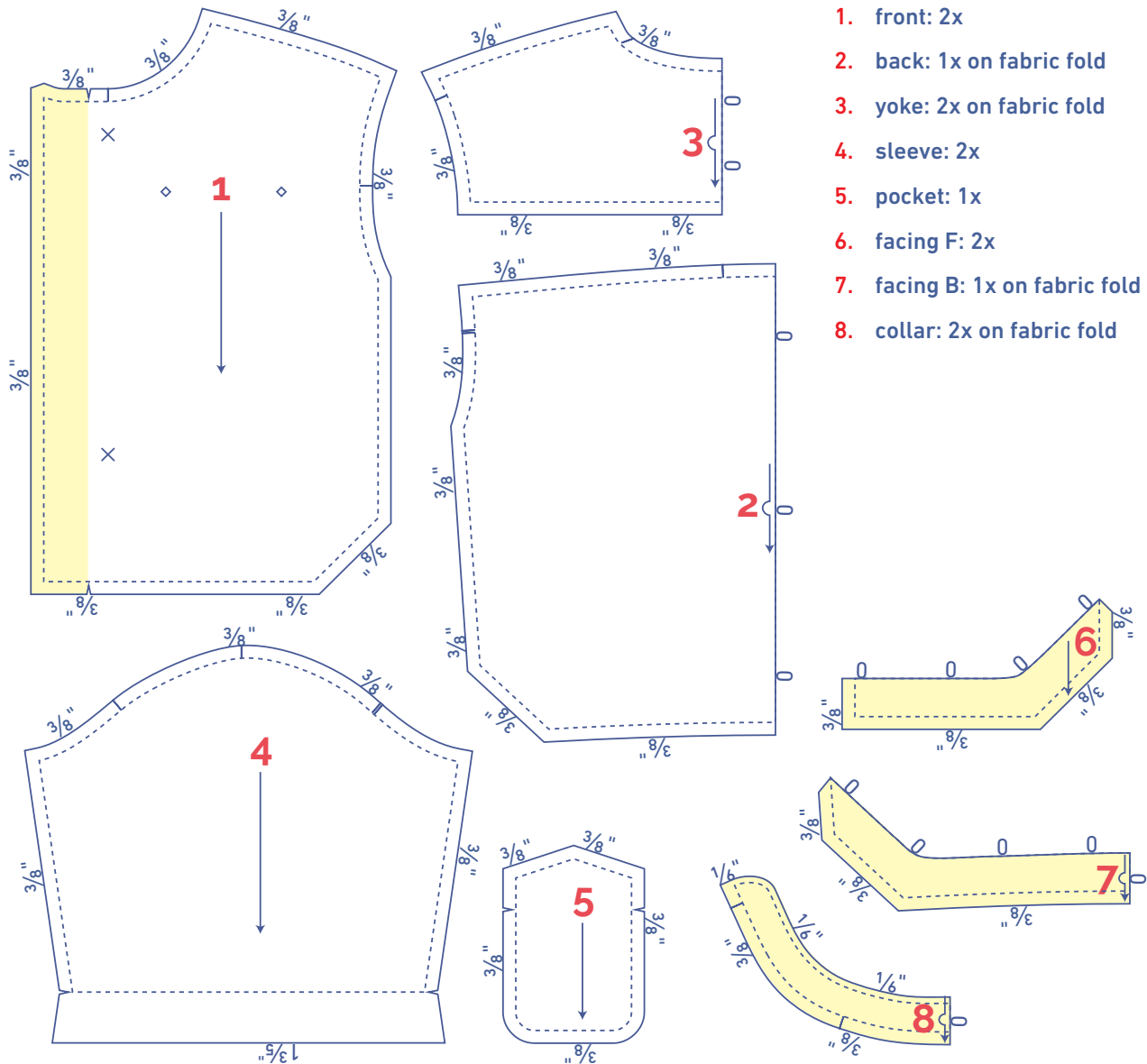
# Proud to be #Sewista



## pattern pieces & seam allowances (in inches)

To sew the garment as described in the instructions, draw the illustrated seam allowances around the paper pattern pieces before cutting them out. If you are using a PDF pattern, the pattern can be printed with or without seam allowance.

To find out more, watch the [video](#).



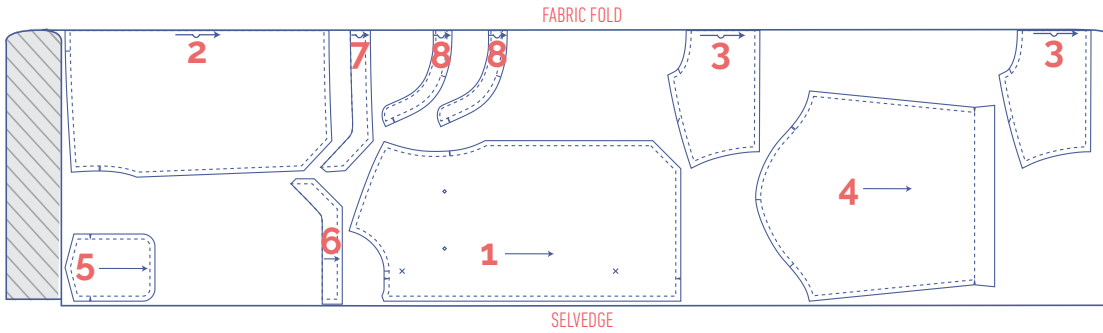
### IMPORTANT

The pieces highlighted in light yellow have iron-on interfacing attached to the wrong side.

	material type
	fabric
	iron-on interfacing

**fabric layout – solid fabrics**  
**fabric width 43"**

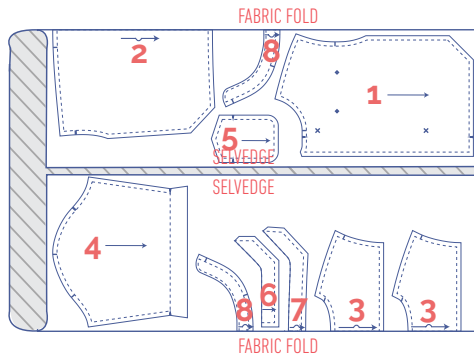
2 - 14 years



**IMPORTANT**  
 You only need pattern piece 5 once.

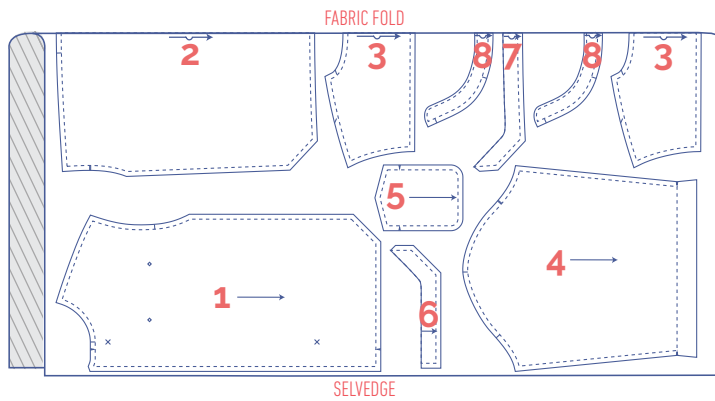
**fabric layout – solid fabrics**  
**fabric width 55"**

2 - 6 years



**IMPORTANT**  
 You only need pattern piece 5 once.

8 - 14 years



**IMPORTANT**  
 You only need pattern piece 5 once.

**marking pattern pieces**

<p>Notch the pattern paper and fabric at the following points</p>	<p>Mark the following points using marking thread</p>
<p>I single notch</p>	<p>● centre point</p>
<p>II double notch</p>	<p>✕ buttons</p>
<p>V V notch</p>	

# sewing instructions



The method used to finish the seams depends on the fabric used. The pieces are always sewn together with the right sides of the fabric facing, unless stated otherwise.

F front

B back

LF left front

RF right front

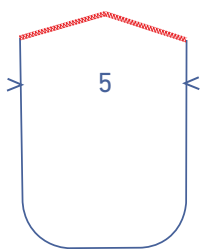
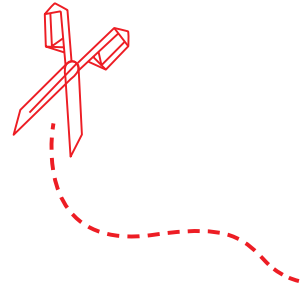
CF centre front

CB centre back

 right side

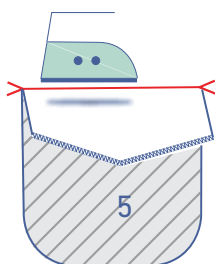
 wrong side

 iron-on interfacing

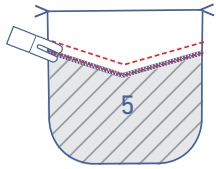


**1**

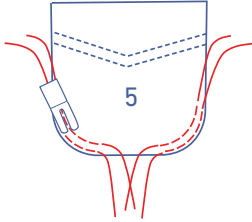
Finish the indicated raw edges of the pocket (5) with overlock stitching.



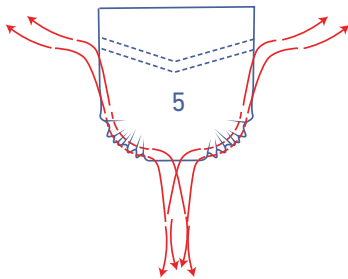
Press the top of the pocket towards the wrong side at the V notches.



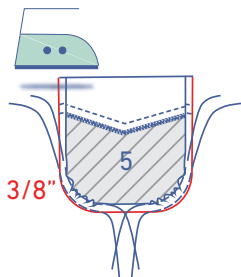
Stitch into place with two lines of topstitching, following the shape of the facing.



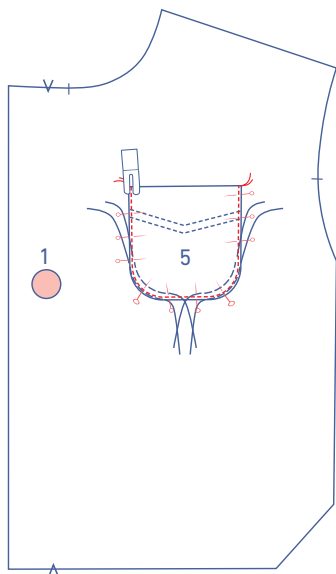
Use a long stitch at a low thread tension to sew 2 parallel rows of stitching in the rounded corners of the pockets. Leave a length of thread at the start and end of the rows.



Carefully tug the threads to gently bunch the fabric and roll the seam allowance.

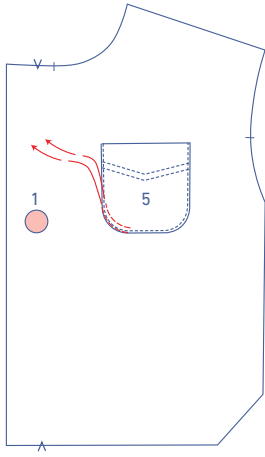


Press the raw edges  $\frac{3}{8}$ " over towards the wrong side.

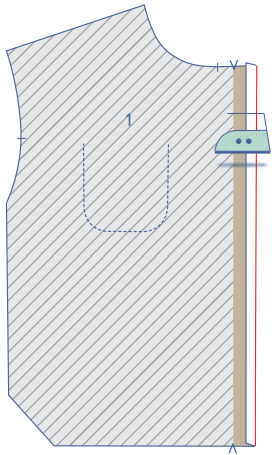


Pin the pocket to the LF (1) where indicated. Edgestitch into place.



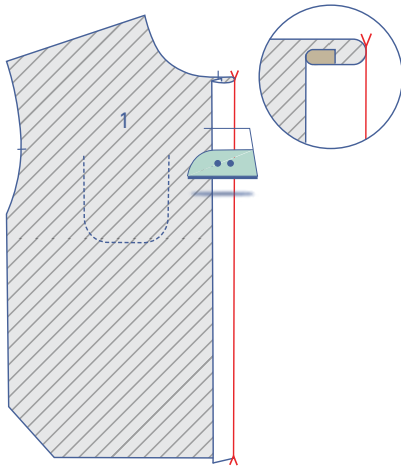


Remove the gathering threads.

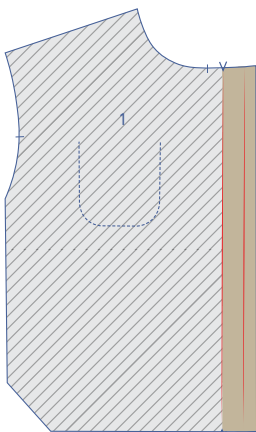


## 2

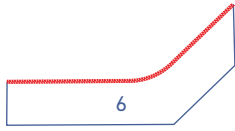
Press the seam allowance at the CF  $\frac{3}{8}$ " over towards the wrong side.



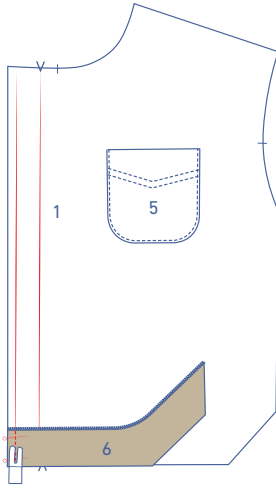
Next, fold over the facing towards the wrong side once more, this time at the V notches.



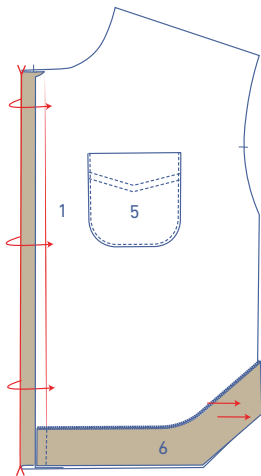
Open back out.



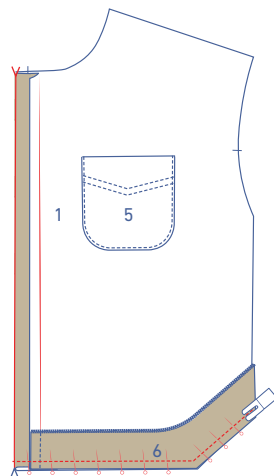
Finish the indicated raw edge of the facing F (6) with overlock stitching.



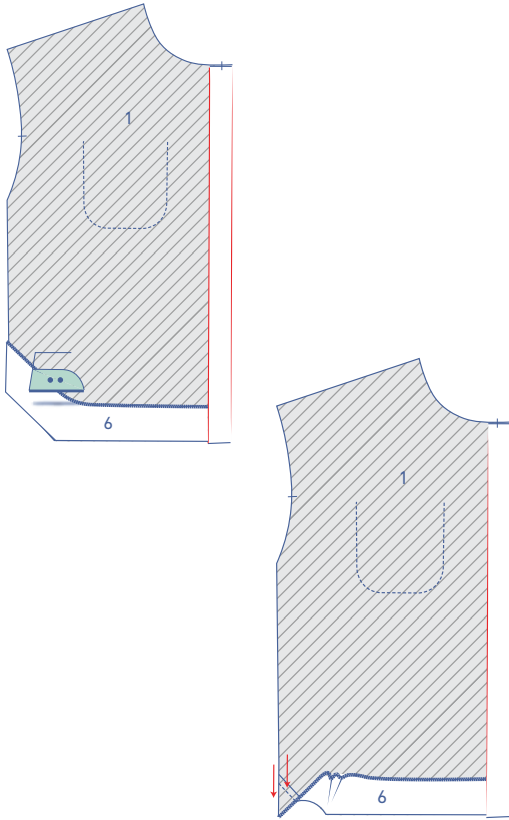
Pin and stitch the short end of the facing to the interfaced section of the front.



Fold the interfaced F and the facing over along the pressed fold line from the V notches so that the hem lines are matching and the right sides of the fabric are touching.

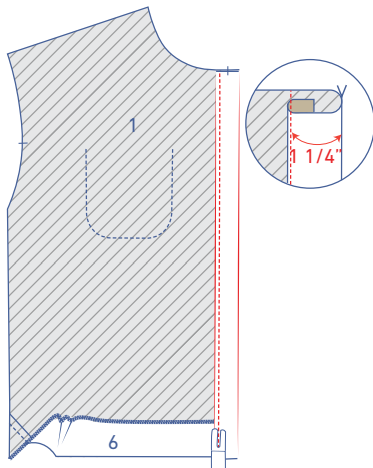


Pin and stitch the hem.

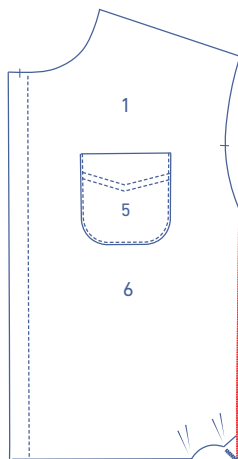


Flip the facing towards the wrong side of the front and press flat.

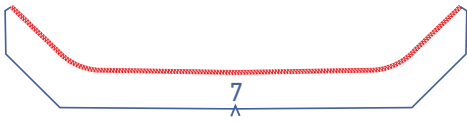
Now, unfold the hem facing at the side seam.



Stitch the front facing to the CF at  $1 \frac{1}{4}$ ".

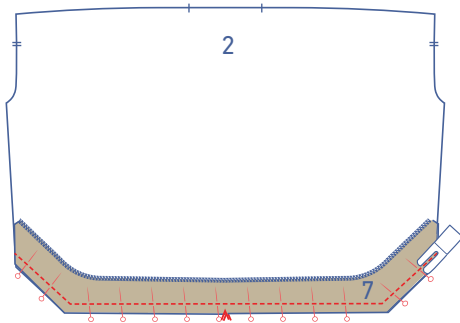


Finish the side seams of the F + hem facing (folded down) with overlock stitching.

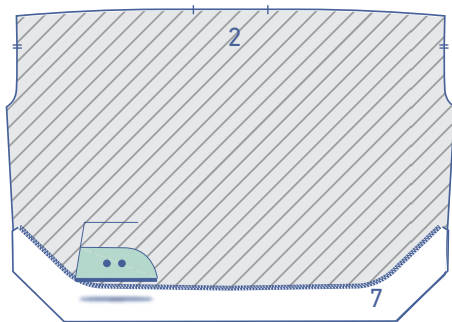


### 3

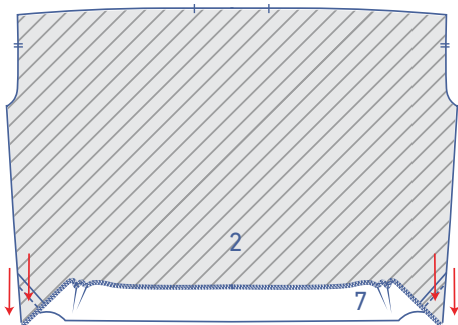
Finish the indicated raw edge of the facing B (7) with overlock stitching.



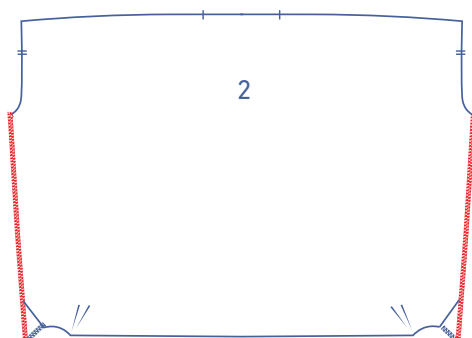
Pin the facing B with the non-overlocked raw edge to the hem of the B (2) and stitch into place.



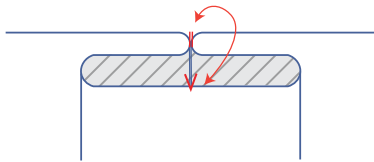
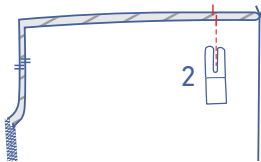
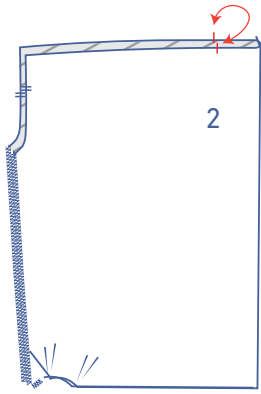
Fold the facing towards the wrong side of the back and press flat.



Now, open the facing back out at the side seam.



Finish the side seams of the B + facing (folded down) with overlock stitching.

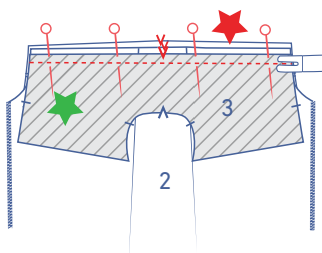
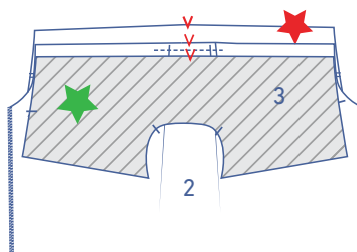
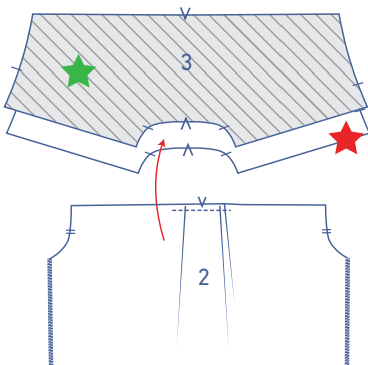


## 4

Fold the B in half crosswise with the wrong sides of the fabric touching and the notches matching.

Stitch the pleat allowance vertically into place (i.e. stitch about 1 1/4" vertically from the top).

Press the pleat allowance flat so that the V notch in the CB lines up evenly with the single notches.

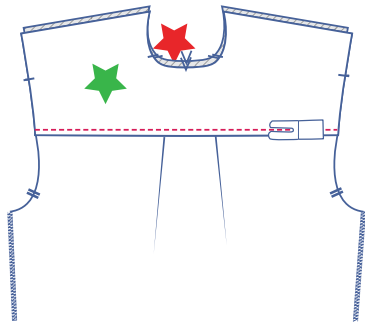


## 5

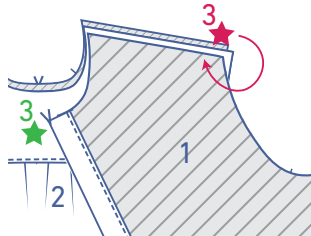
Stack both yoke pieces (3) together with the right sides facing and the straight ends matching. Now, slide the back piece in between the yokes (right side of the back facing up), matching raw edges.

The outer yoke piece is marked with a green star, while the yoke piece with a red star will eventually be situated on the inside of the shirt.

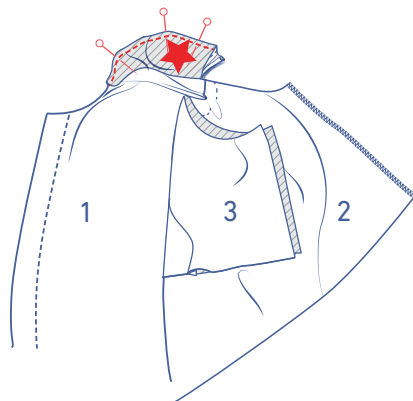
Stitch into place.



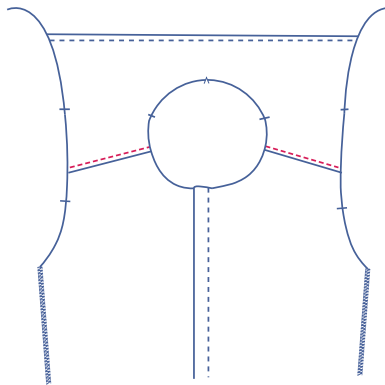
Open both yoke pieces back out. The B should be neatly positioned between the two pieces. Topstitch right next to the seam.



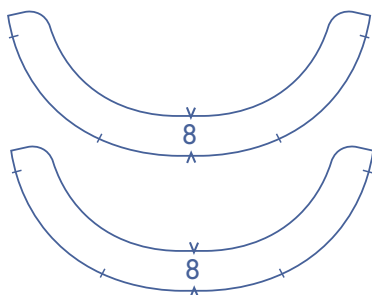
Place the shoulder seams of the F and of the yoke with the green star on top of each other with the right sides facing. Now, take the shoulder seam of the yoke with a red star and fold this onto the wrong side of the F with the right side of the yoke facing down.



Neatly match the 3 raw edges and stitch the layers together.

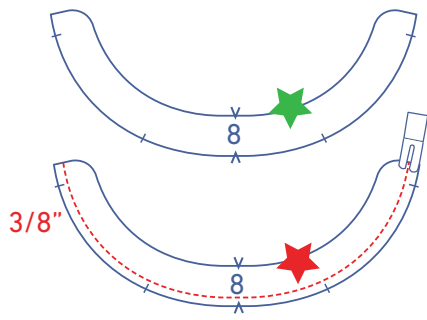


Turn the right way out. The shoulder seam of the F should be neatly positioned between the yoke pieces. Topstitch right next to the seam.

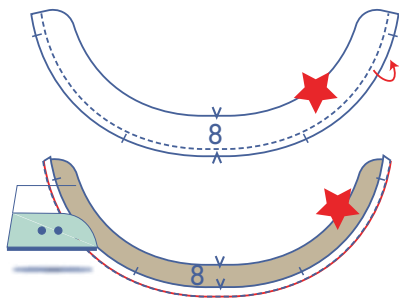


## 6

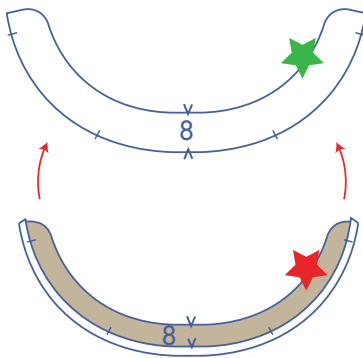
Now it's time to sew the 2 collar pieces (8).



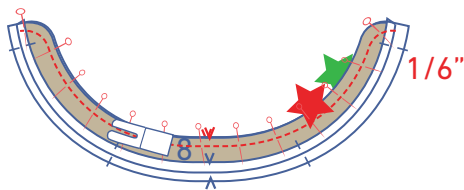
Stitch the bottom of 1 collar piece at  $\frac{3}{8}$ " away from the edge. This collar is marked with a red star.



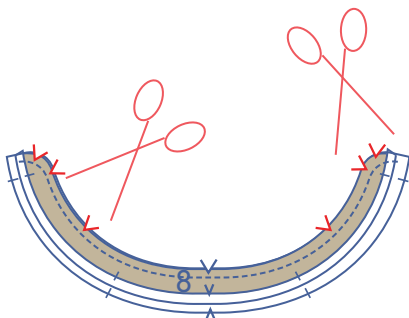
Press the seam allowance of the collar marked with the red star towards the wrong side along the stitching.



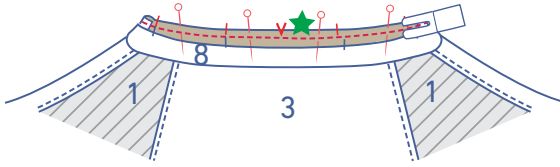
Place the collar with the red star on top of the collar with the green star (= the collar that has not been pressed at the bottom).



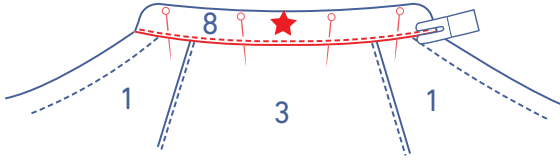
Pin and stitch the contours where indicated with a  $\frac{1}{6}$ " seam allowance.



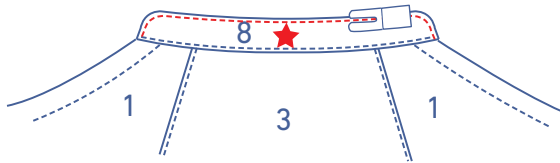
Trim the seam allowance at the curves to prevent any bunching.



Pin and sew the collar with the green star to the neckline along the wrong side of the shirt, matching the notches.



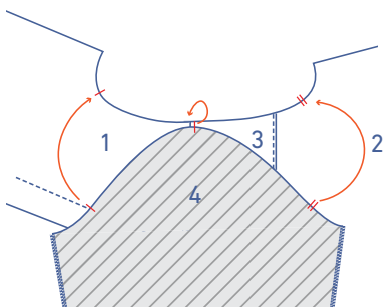
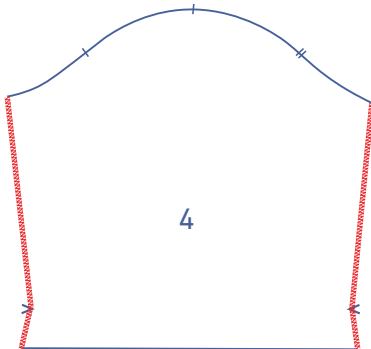
Fold the collar with the red star towards the right side of the neckline. The fold line should be directly over the previous stitching. Pin and sew into place.



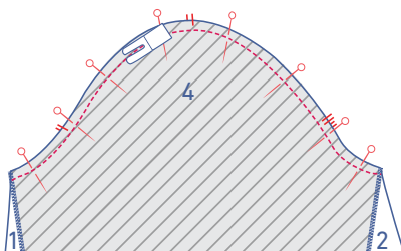
Finish stitching the collar right next to the edge.

## 7

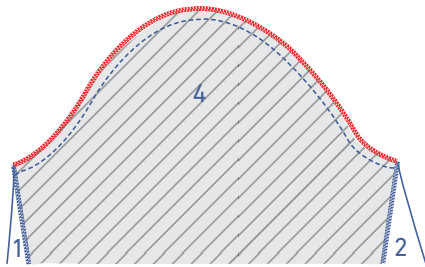
Finish the sleeve sides (4) with overlock stitching.



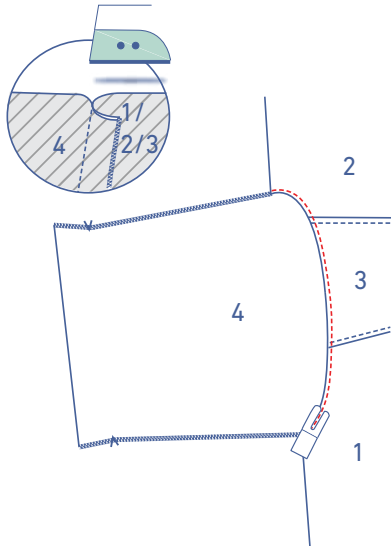
Pin and sew the top of the sleeve (= the sleeve cap) to the armhole, matching the notches. The single notch marks the F, while the double notch marks the B. The top notch aligns with the notch marking the shoulder.



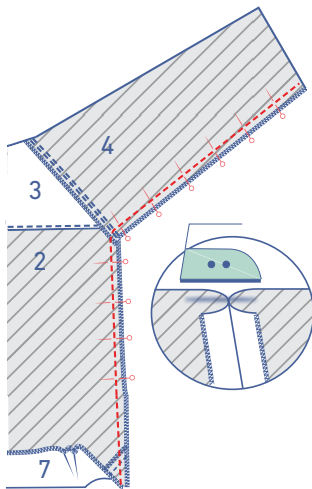




Finish the raw edges with overlock stitching.

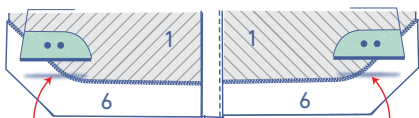


Press the seam allowance towards the body of the shirt. Topstitch the body of the shirt right next to the sleeve seam.

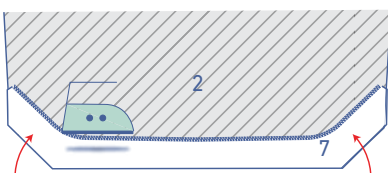


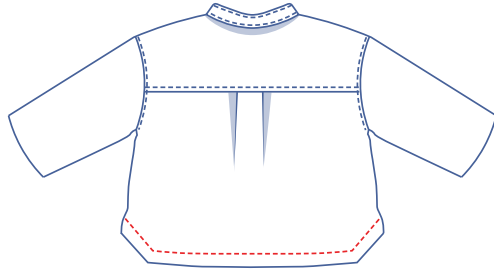
## 8

Pin and stitch the side and underarm seams with the hem facing folded down. Stitch all the way down so that the side seams of the facing have also been sewn together. Press the seam allowances open.

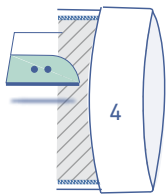


Fold the facing towards the wrong side.



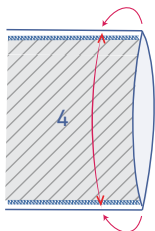
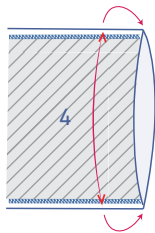


Stitch the facing into place with topstitching. Follow the shape of the hem line.

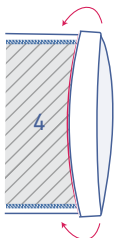


## 9

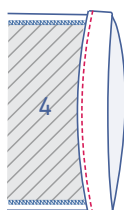
Press the hem allowance of the sleeves up at the V notches and open back out.

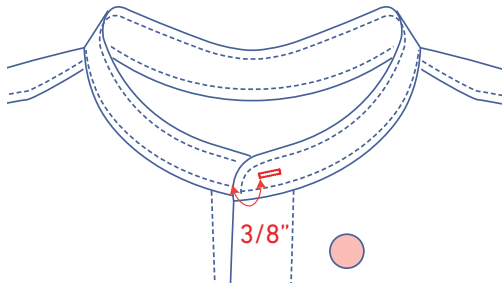


Fold up the raw edge to the pressed fold line and fold up again.



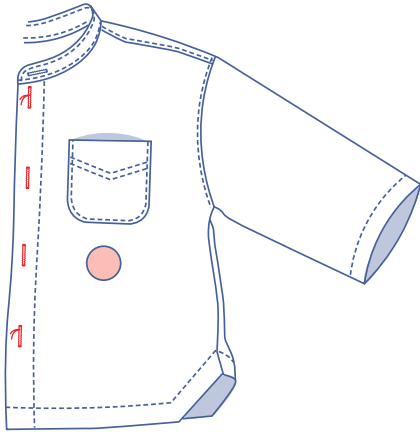
Sew into place next to the edge.



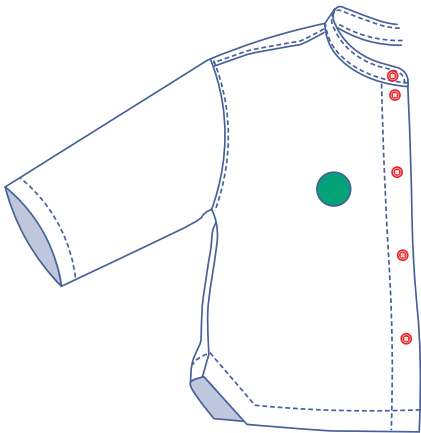


## 10

Make a horizontal buttonhole on the left side of the collar halfway up at  $\frac{3}{8}$ " from the finished edge.



Make vertical buttonholes in the LF. The positions of the top and bottom buttons have been marked on the pattern for you. Divide the distance equally to determine the location of the other buttons.



Finish by sewing all the buttons onto the RF to match the buttonholes on the LF.