

# Harmony by Fibre ⚡ood



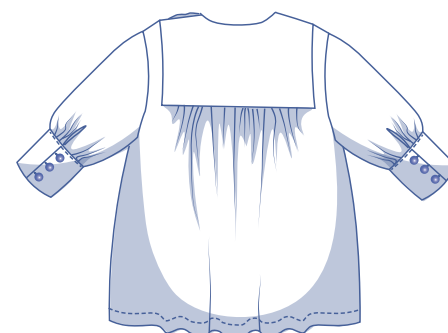
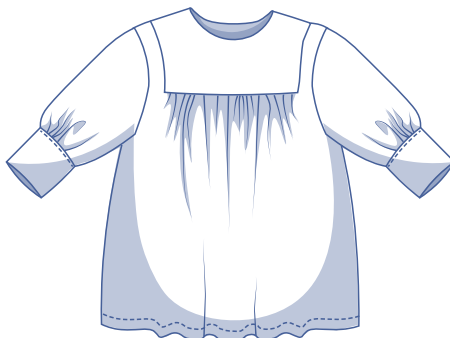
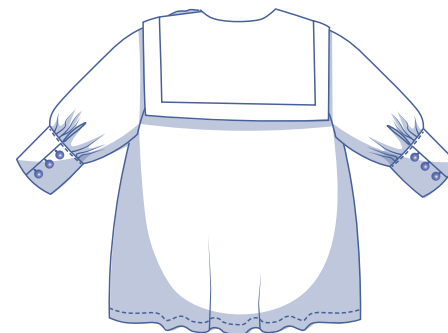
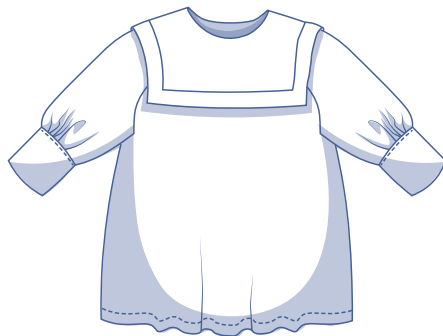
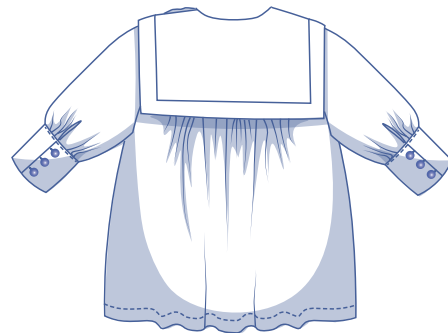
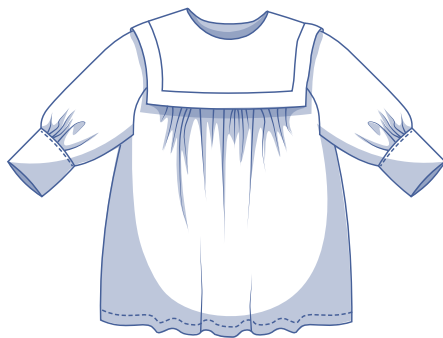
# Harmony by Fibre ⚡ood

\*\*\*\*\*



XS - XXXL

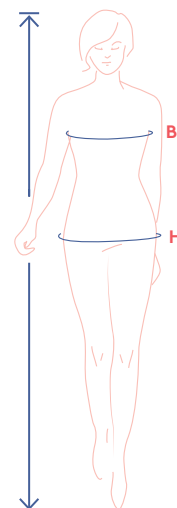
Ahoy, mateys! Inspired by sailor shirts, Harmony is a treat for anyone who can't get enough retro vibes, including a sailor collar, button flap on the shoulder, and short sleeves with gathers above the fitted cuff. Pimp Harmony your way. Cuff, no cuff, ruffles, or none, in a mix of different fabrics, maybe even with a lace insert – anything goes!



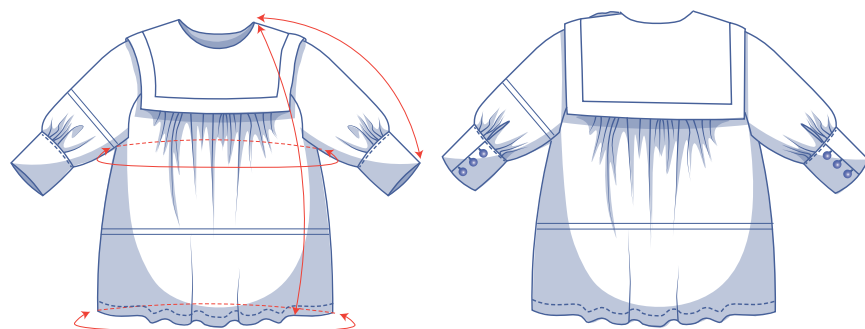
## size chart (in inches)

size	XS		S		M		L		XL		XXL		XXXL		
	0	2	4	6	8	10	12	14	16	18	20	22	24	26	28
body height	5' 25"	5' 38"	5' 45"	5' 48"	5' 51"	5' 54"	5' 58"	5' 61"	5' 64"	5' 64"	5' 64"	5' 64"	5' 64"	5' 64"	5' 64"
B (bust)	29.9	31.5	33.1	34.6	36.2	37.8	39.4	40.9	43.3	45.7	48	50.4	52.8	55.1	57.5
H (hips)	33.9	35.4	37	38.2	39.4	40.6	41.7	42.9	45.3	47.2	49.2	51.2	53.1	55.1	57.1

Choose your size based on your **bust measurement**. If your hip measurements are wider than those in the size chart, check the hem circumference in the chart below to see if there's enough room or whether the pattern needs to be altered. It's easy to do. Simply trace the line of the one size instead of the other.



## pattern measurements (in inches)



— shorten or lengthen the pattern here

This chart's measurements are the pattern measurements based on the fabric type and serve as a reference. Ease has been added to the width measurements (in addition to the exact body measurements) for a more comfortable fit. Harmony is designed to have a more **relaxed** cut. Depending on the preferred cut, you could decide to go a size smaller or larger than the recommended size.

size	XS	S	M	L	XL	XXL	XXXL
length	24	24.7	25.3	26	27	27.9	28.8
sleeve length*	20.3	20.9	21.5	22.2	22.8	23.5	24.1
bust (after gathering)	34.9	38	41.2	44.3	48.4	53	57.7
hem circumference (without ruffles)	35.2	38.1	41.1	44.1	47.8	52.2	56.5
hem circumference (with ruffles)	46.4	50.1	53.9	57.6	62.2	67.5	72.8

\* Including shoulder length and cuff.

Compare the stated lengths to the measured or desired lengths. **Lengthen** or **shorten** the top and/or the sleeves by cutting the pattern pieces at the indicated double lines. Then either increase the distance between the cut pieces by the desired amount (to lengthen), or overlap the pieces (to shorten). Make sure that the CF and CB lines and the side seams are always straight.



### IMPORTANT

Adjust the amount of fabric to be used based on these alterations.

## notions



- Thread
- Iron-on interfacing: max. 1/2 yd
- Buttons (Ø 3/8"): 9
- Piping or cord for the sleeve tabs: 1/3 yd
- Fabric: see table

fabric		XS	S	M	L	XL	XXL	XXXL
fabric width 43"	yd	2 1/2	3	3	3	3 1/4	3 1/4	3 1/4
fabric width 55"	yd	2 1/4	2 1/4	2 1/4	2 3/4	3	3	3 1/4

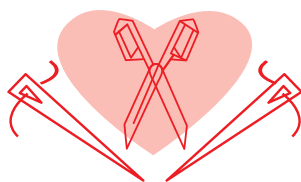
The corresponding fabric layout can be found on page 6 of these sewing instructions.

## fabric advice



Harmony looks fantastic in a whole range of different fabrics. Wovens are the way to go, from chambray, Tencel, and linen to interlock and more. Whether you choose a structured fabric or something with a fluid drape depends on the look you want. Fabrics with a fluid drape, such as (viscose) crêpe or woven viscose aren't as voluminous. If you want more structure and volume, poplin is a great option for Harmony.

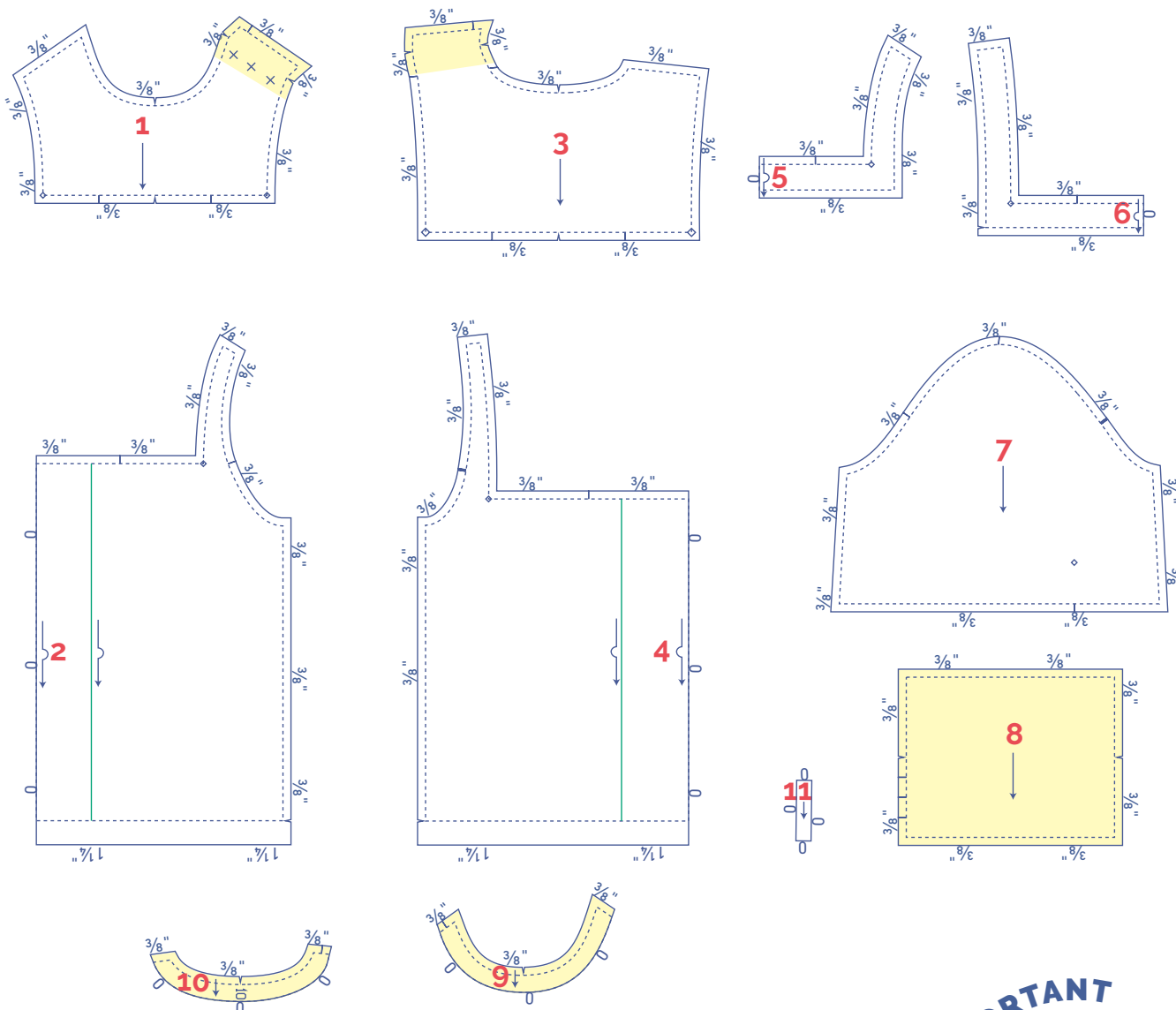
# Proud to be #Sewista



## pattern pieces & seam allowances (in inches)

To sew the garment as described in the instructions, draw the illustrated seam allowances around the paper pattern pieces before cutting them out. If you are using a PDF pattern, the pattern can be printed with or without seam allowance.

To find out more, watch the [video](#).



- |                                      |                              |
|--------------------------------------|------------------------------|
| 1. top piece front: 1x               | 7. sleeve: 2x                |
| 2. front: 1x on fabric fold          | 8. cuff: 2x                  |
| 3. top piece back: 1x                | 9. neckline facing front: 1x |
| 4. back: 1x on fabric fold           | 10. neckline facing back: 1x |
| 5. bib trim front: 2x on fabric fold | 11. sleeve binding: 2x       |
| 6. bib trim back: 2x on fabric fold  |                              |

**IMPORTANT**

The pieces highlighted in light yellow have iron-on interfacing attached to the wrong side.

### TRICK!

You can also make a version without ruffles in the front (2) and back (4). Then place the pattern pieces with the green line against the fabric fold instead of the blue. Ignore the gathering steps in the construction (step 2).



material type



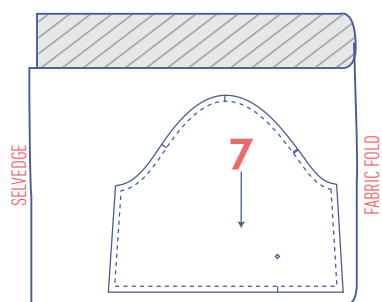
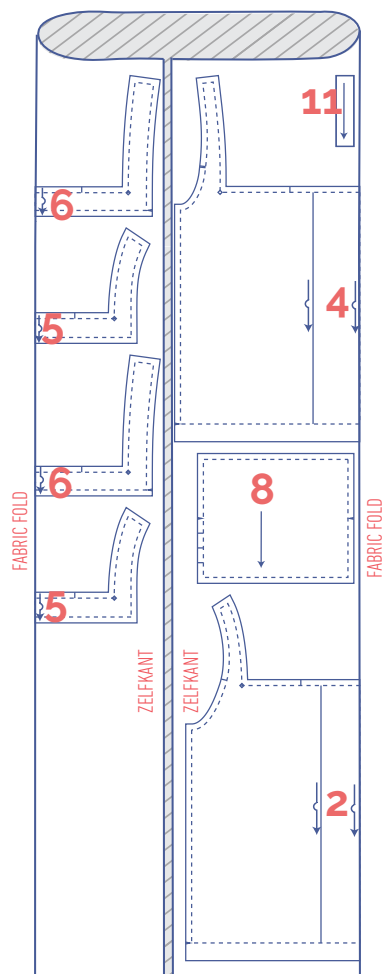
fabric



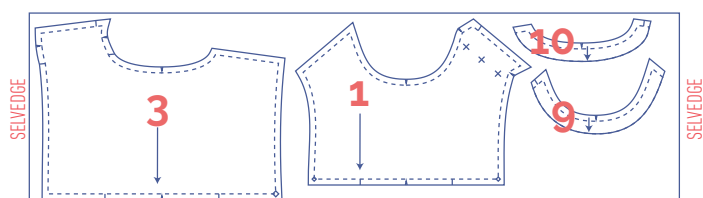
iron-on interfacing

**fabric layout – solid fabrics**  
**fabric width 43"**

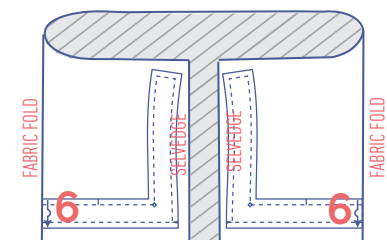
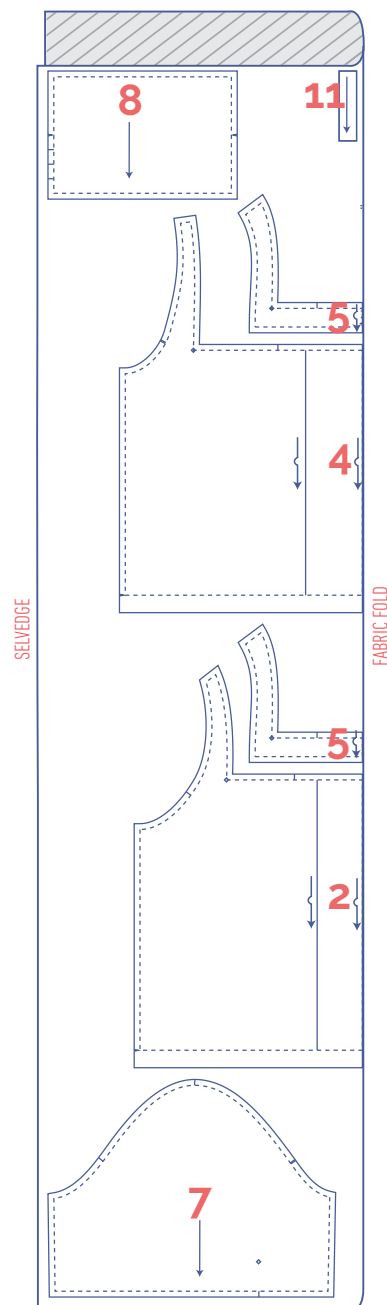
XS



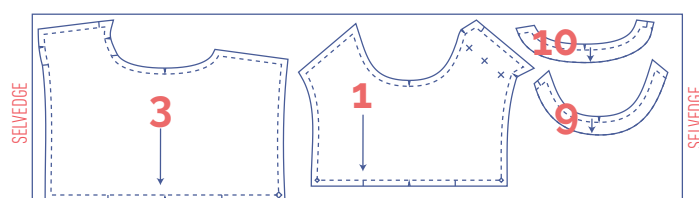
+



S - XL

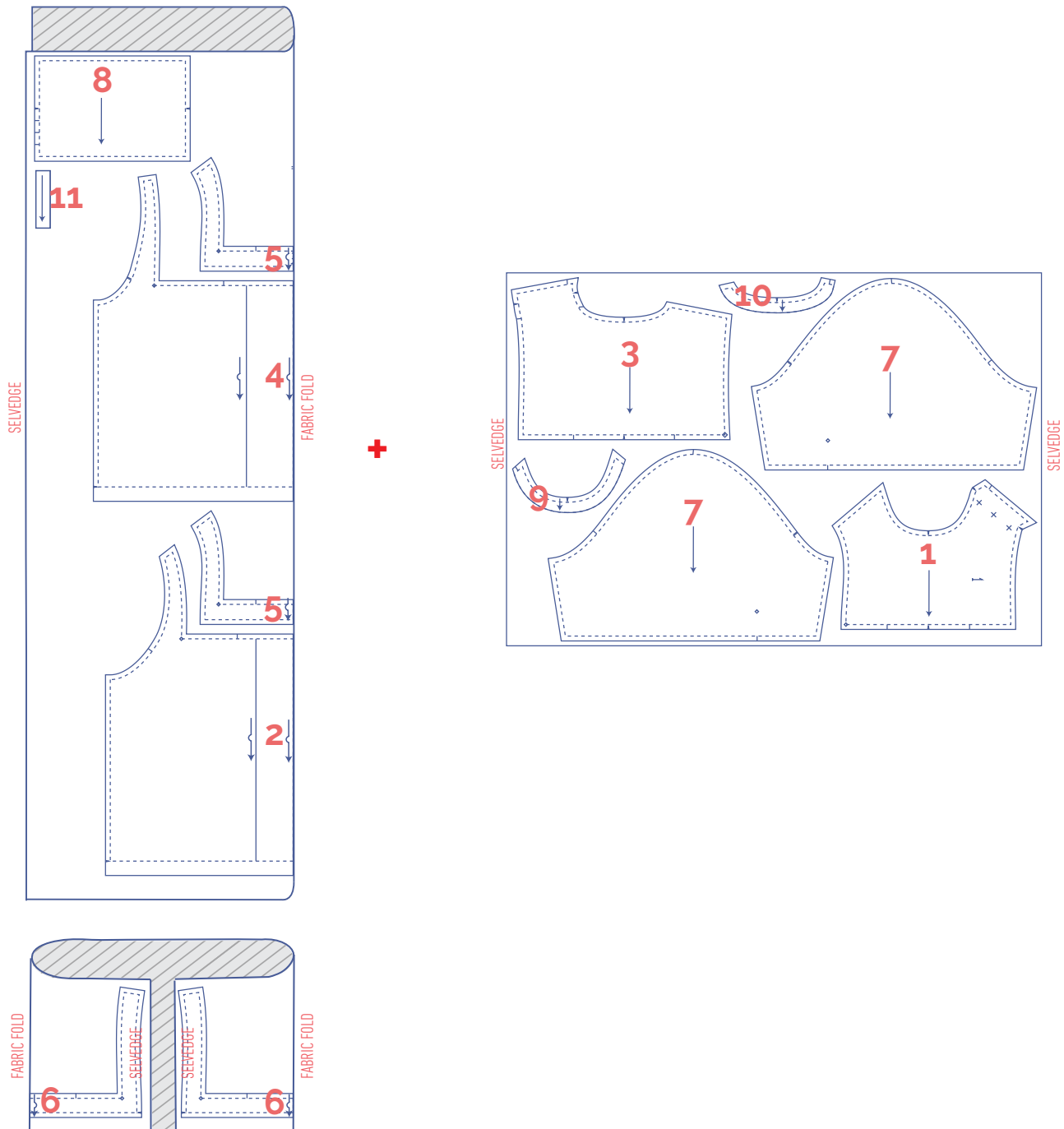


+



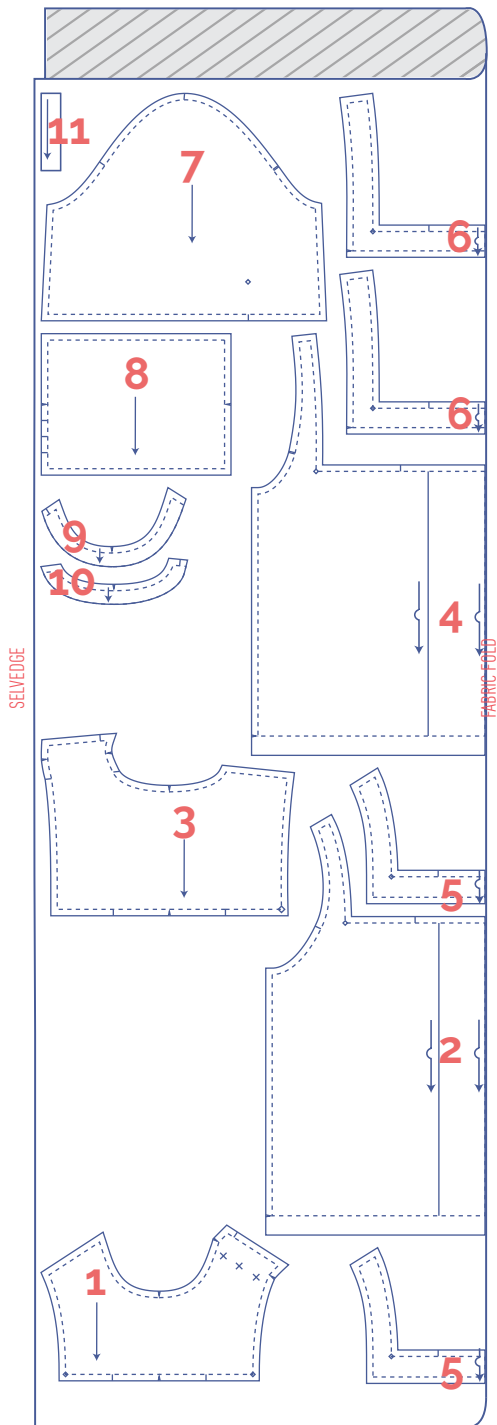
**fabric layout – solid fabrics**  
**fabric width 43"**

XXL -XXXL



## fabric layout – solid fabrics fabric width 55"

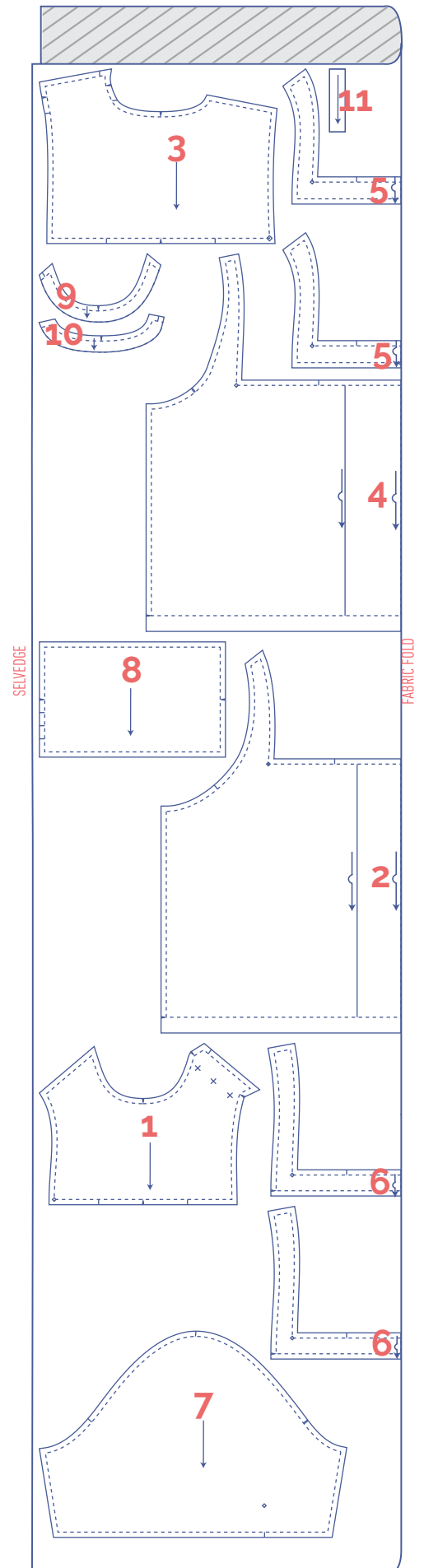
XS - M



### IMPORTANT

You only need pattern pieces 1, 3, 9 and 10 once.

L - XXXL



## marking pattern pieces



Notch the pattern paper and fabric at the following points

| single notch

|| double notch

V V notch



Mark the following points using marking thread

⌂ centre point

⌂ buttonhole



# sewing instructions



The method used to finish the seams depends on the fabric used.  
The pieces are always sewn together with the right sides of the fabric facing, unless stated otherwise.

F front

B back

CF centre front

CB centre back



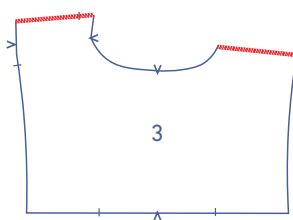
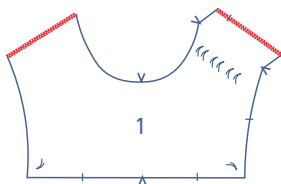
right side



wrong side

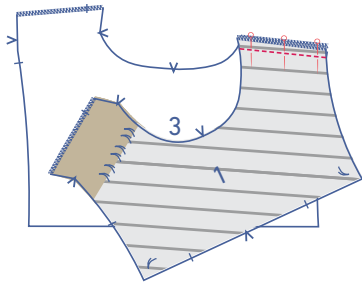


iron-on interfacing

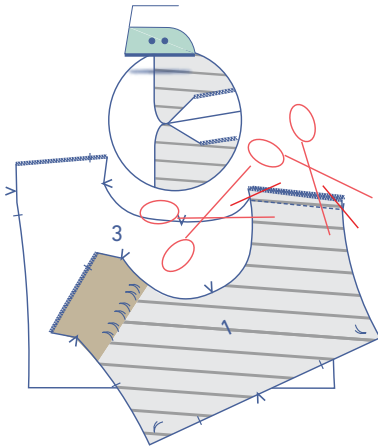


**1**

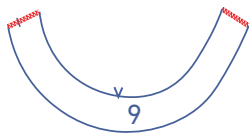
Finish the shoulder seams of the top piece F (1) and top piece B (3) with overlock stitching.



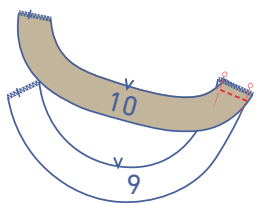
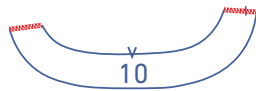
Pin and stitch the shoulder seams without notches.



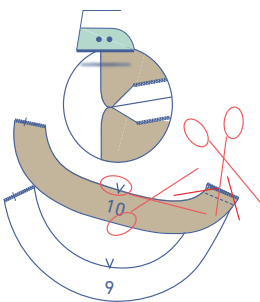
Press the seam allowance open. Trim the seam allowance diagonally at the tips to prevent the fabric from bunching.



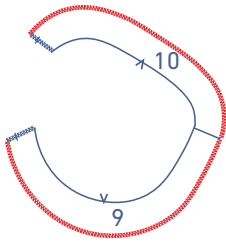
Finish the shoulder seams (short straight edges) of the neck facing F (9) and neck facing B (10) with overlock stitching.



Pin and stitch the shoulder seams without notches.

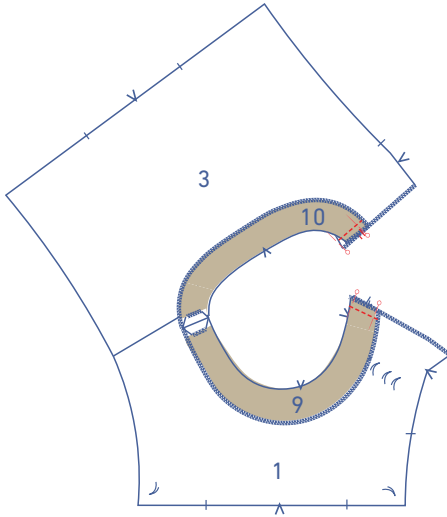


Press the seam allowance open. Trim the seam allowance diagonally at the tips to prevent the fabric from bunching.

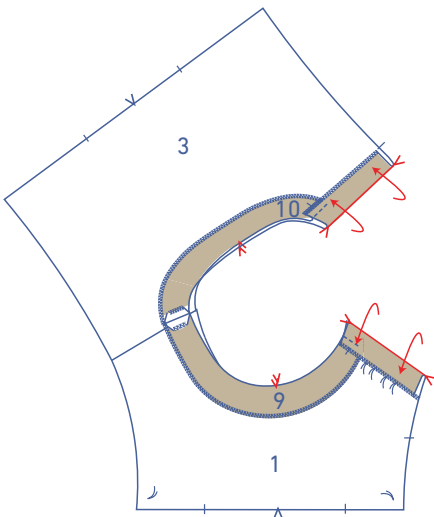


Finish the outside of the neckline facing with overlock stitching.

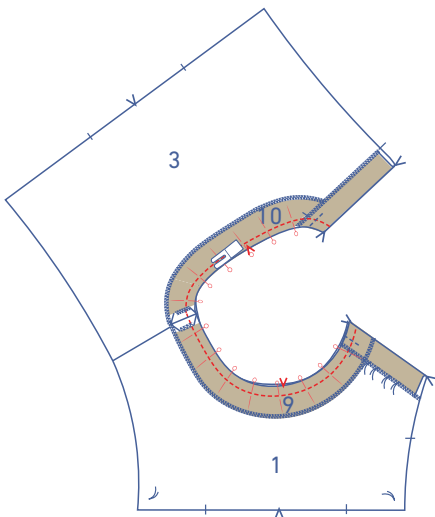
Place the constructed facing on top of the top front and top back, right sides together. Stitch the short edges as shown.



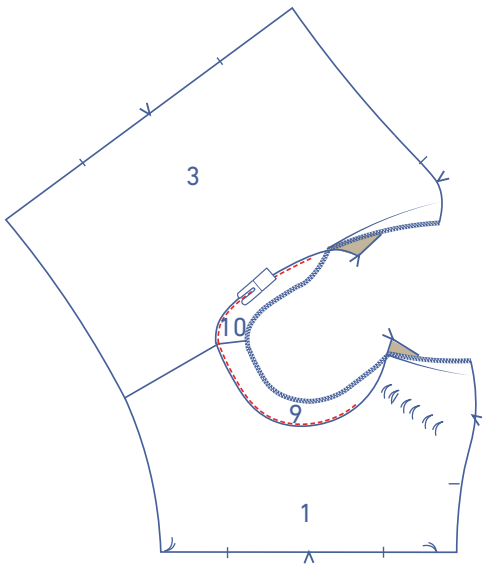
Fold the shoulder seam facing of the top piece F and top piece B at the V notches so right sides are facing.



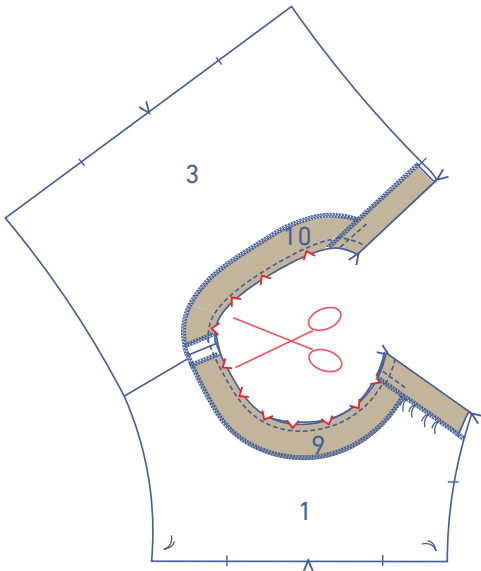
Now pin the necklines of the facing and top piece together and stitch into place.



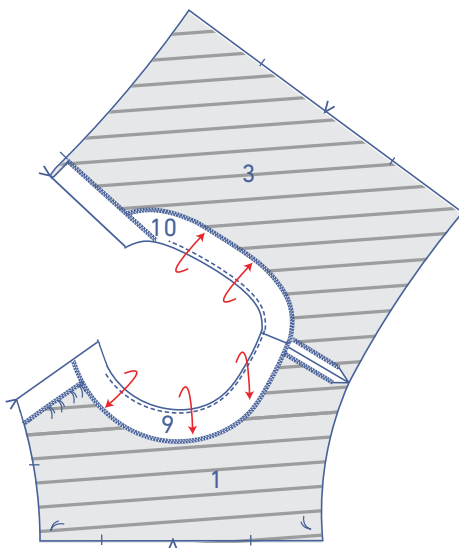
Fold the facing over and stitch to the seam allowance underneath, right next to the seam. Sew as far as you can.



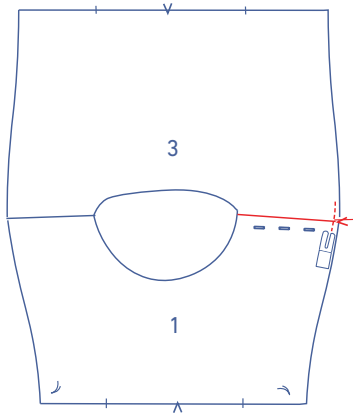
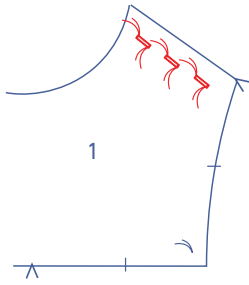
Notch the remaining seam allowance of the neckline, so that the seam has a nice, round curve.



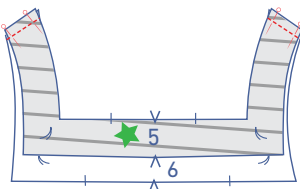
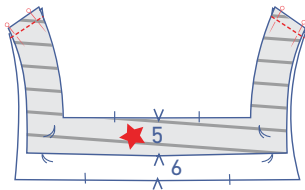
Fold the facing neatly over onto the wrong side.



Make buttonholes where indicated.

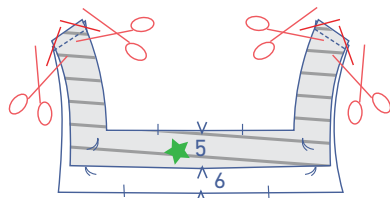
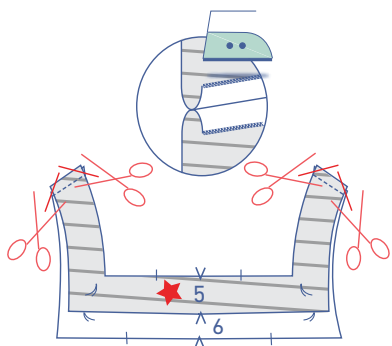


Match the V notch in the top piece F marking the facing's fold line to the single notch in the top piece B and stitch into place.

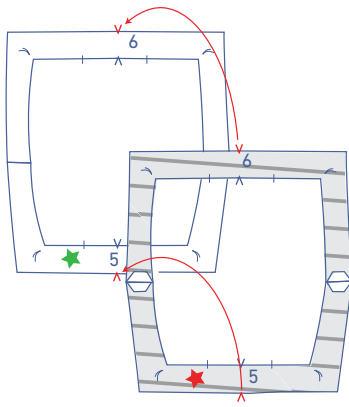


## 2

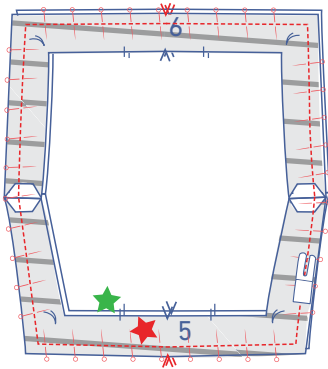
Pin and stitch the shoulder seams of the bib trim F (5) and bib trim B (6) together. The pieces marked with a green star will be on the outside, and the ones with a red star will be on the inside.



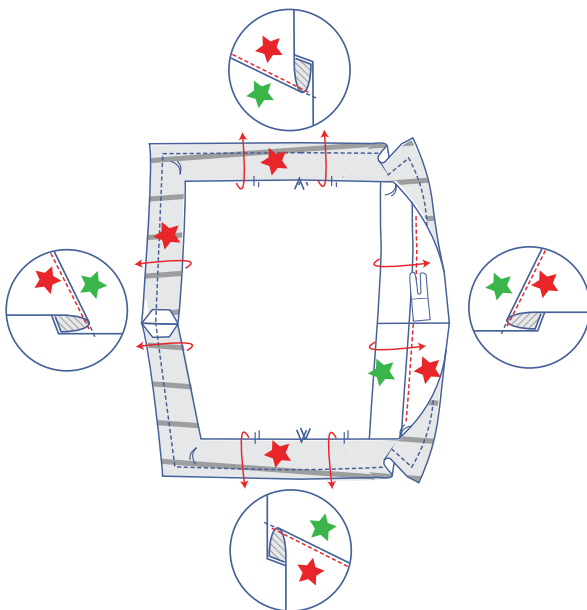
Press the seam allowances open. Trim the seam allowance diagonally at the tips to prevent the fabric from bunching.



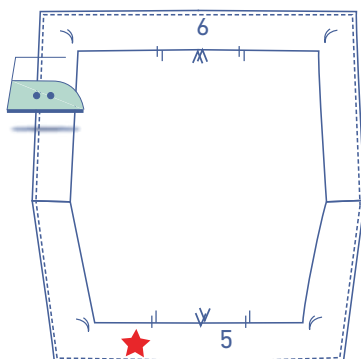
Place the bib trim with the red star on top of the bib trim with a green star, right sides together and matching notches.



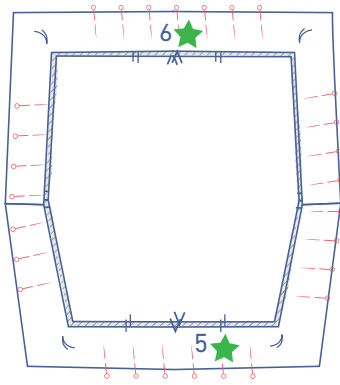
Pin and stitch the outside edges of the trim together.



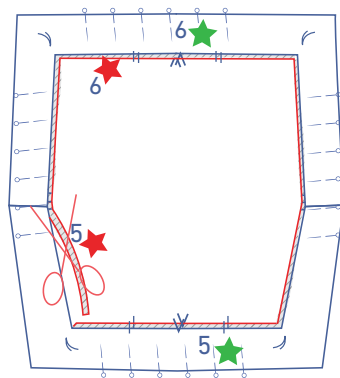
Fold over each side of the bib trim marked with the red star and stitch to the seam allowance underneath, right next to the seam. Sew as far as possible towards the corners.



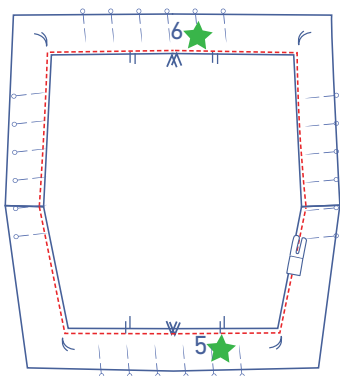
Fold the stitched bib trim (= red star symbol) over to the wrong side of the other bib trim (= green star symbol) and press.



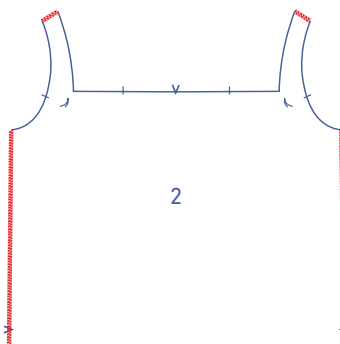
Pin both pieces of bib trim together along the right side (= bib trim with green star).



Trim the excess inner contours of the stitched bib trim (= red star symbol) so that the edges of both bib trim pieces are even.

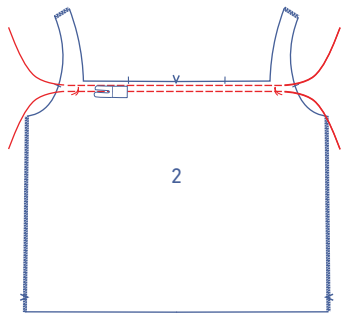


Stitch these edges together.



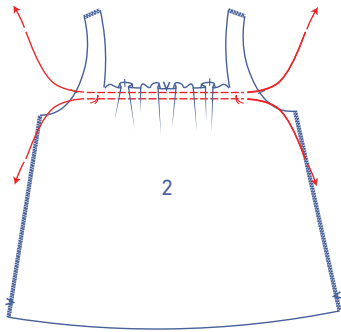
### 3

Finish the shoulder and side seams of the F (2) with overlock stitching.



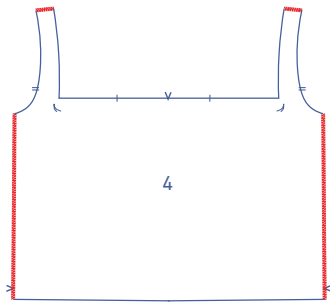
#### OPTIONAL

At the top of the F, sew 2 parallel lines of stitching with a long stitch length at a low thread tension. Stitch just past the marking threads on either end. Leave long thread tails at the start and end.

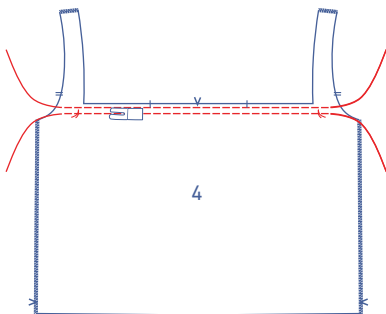


#### OPTIONAL

Carefully tug the ends of the gathering threads to create ruffles in the fabric.

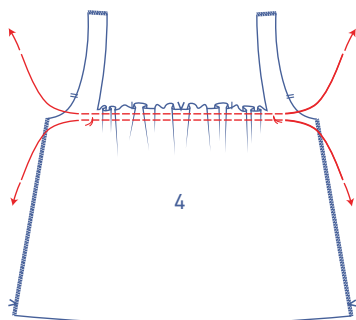


Finish the shoulder and side seams of the B (4) with over-lock stitching.



#### OPTIONAL

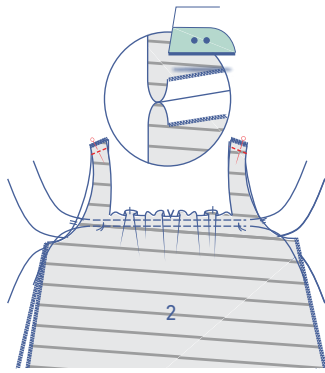
At the top of the B, sew 2 parallel lines of stitching with a long stitch length at a low thread tension. Stitch just past the marking threads on either end. Leave long thread tails at the start and end.



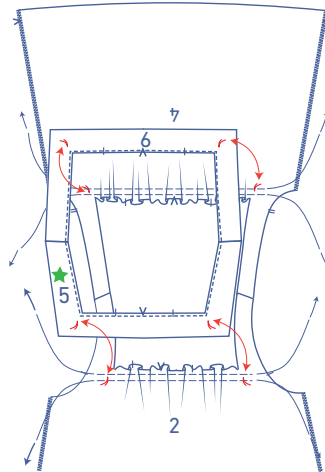
#### OPTIONAL

Carefully tug the ends of the gathering threads to create ruffles in the fabric.



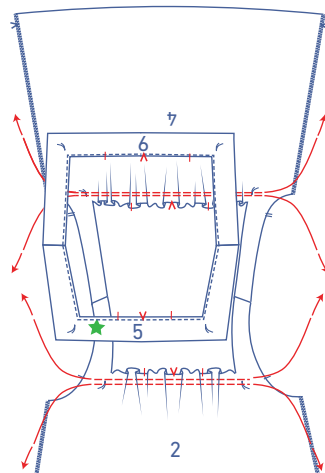


Sew the shoulder seams closed and press the seam allowance open.

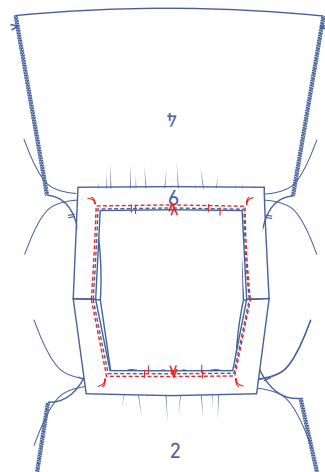


## 4

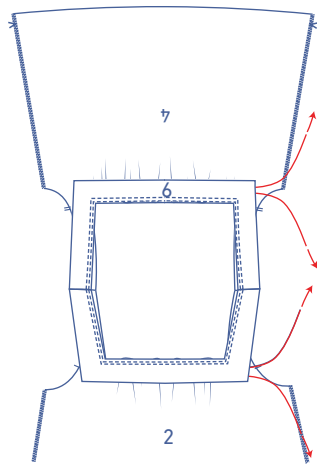
Place the bib trim on top of the F and B pieces, matching the marking threads. The bib trim with the green star should be facing up.



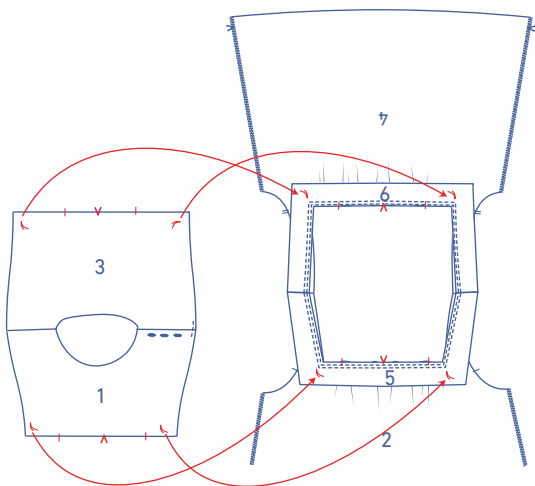
Distribute the gathers so that the notches in the bib trim match the ones in the F and B.



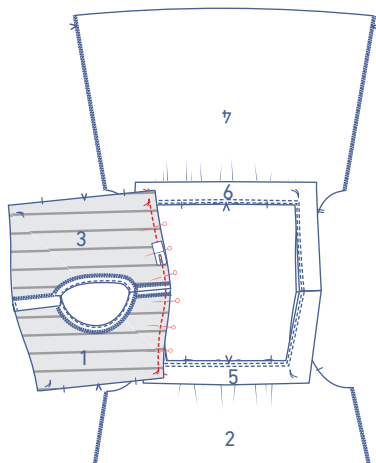
Join the two pieces by stitching the inside edges of the bib trim.



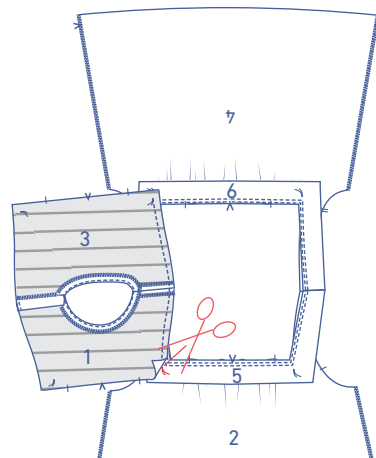
Remove the gathering threads.



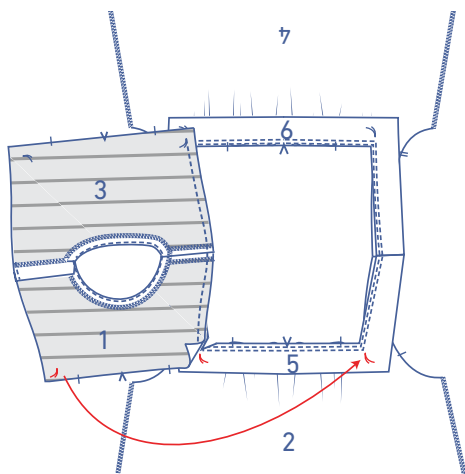
Now, with marking threads and notches matching, stitch the bib (1+3) to the bib trim (5+6) and body pieces (2+4) as follows:



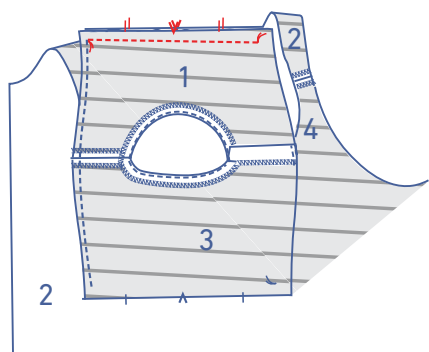
First, pin the indicated edges together with the right sides touching. Sew into place between the marking threads.



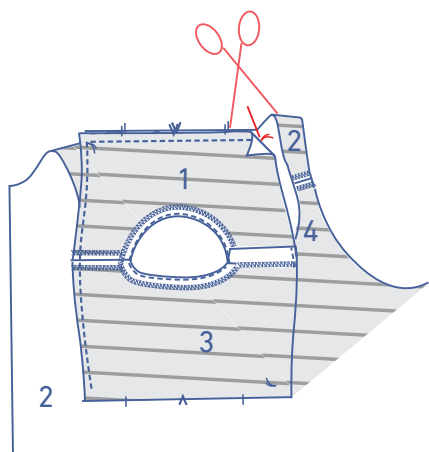
Fold the seam allowance of the top piece F (1) over and snip diagonally into the seam allowance of the F+trim F (2+5) until just before the marking thread.



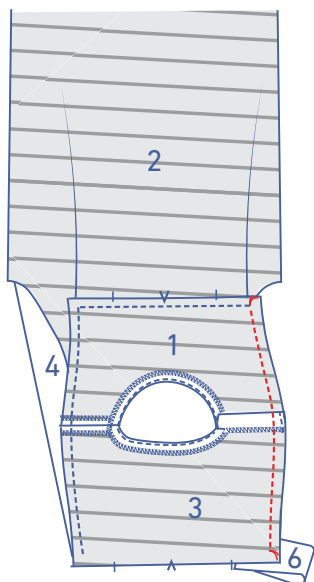
Turn the garment over and pin the lower edge of the top piece F (1) to the horizontal edge of the F+trim F (2+5).



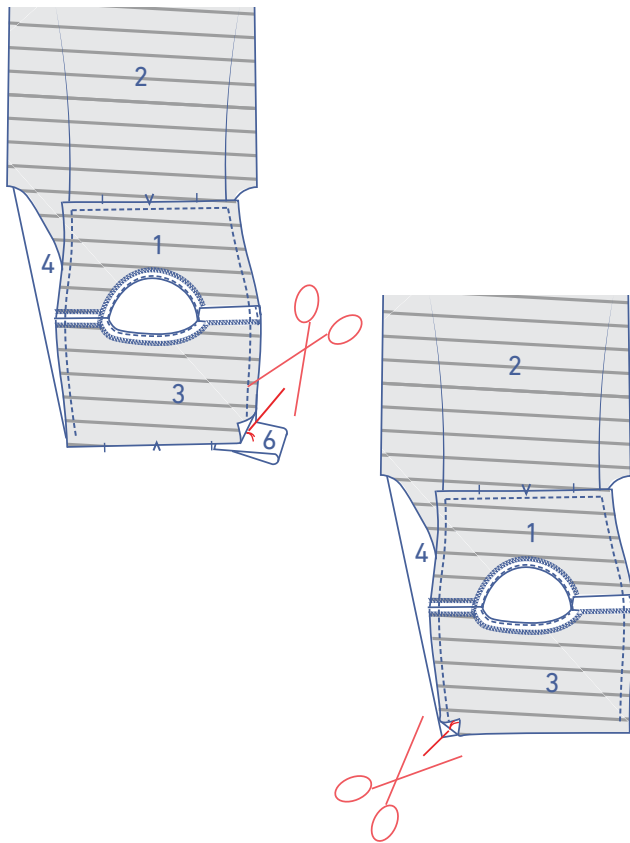
Make sure all the marking threads and notches are matching. Sew into place between the marking threads.



Fold the seam allowance of the top piece F (1) over and snip diagonally into the seam allowance of the F+trim F (2+5) until just before the marking thread.

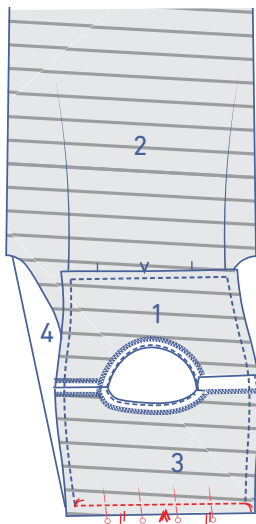


Now move the garment around again to stitch the illustrated ends. Sew into place between the marking threads.

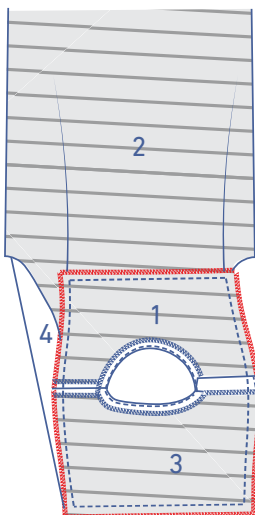


Fold the seam allowance of the top piece B (3) over and snip diagonally into the seam allowance of the B+trim B (4+6) until just before the marking thread.

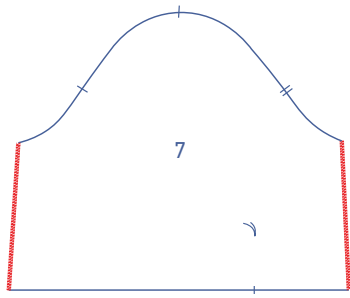
Snip as described above on the opposite corner.



Move the garment around again a final time to stitch the bottom edge of the top piece B (3) to the horizontal edge of the B+trim B (4+6). Make sure all the marking threads and notches are matching. Sew into place between the marking threads.

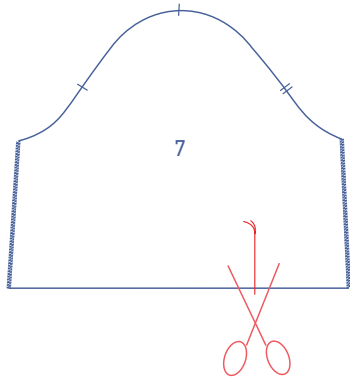


Finish the raw edges with overlock stitching.

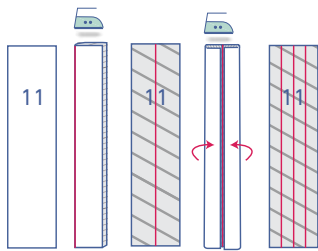


## 5

Finish the sides of the sleeve (7) with overlock stitching.

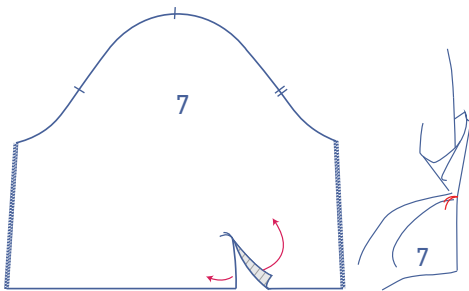


Snip into the sleeve from the notch in the hem up to the marking thread.

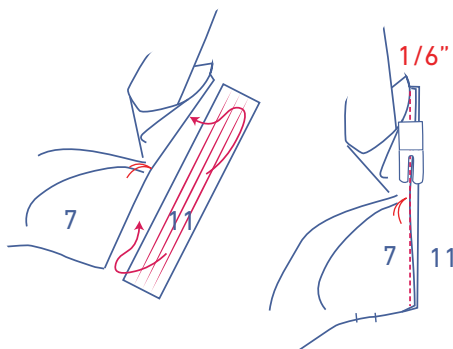


Press the sleeve binding (11) as follows:

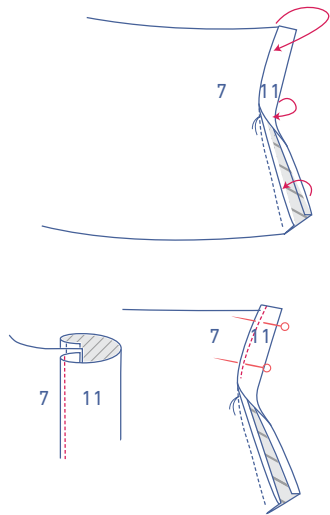
- Start by pressing the binding in half lengthwise all the way down to create a fold line.
- Next, press the long ends until the raw edges meet the fold line.
- Open the binding back out.



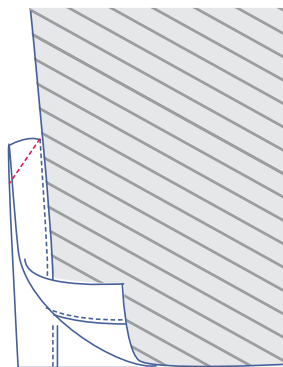
Open the sleeve split so that you end up with a single straight line.



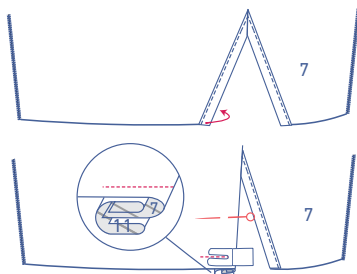
Slide the sleeve binding under the sleeve with the right side facing up. Line up one long end with the edge of the sleeve split and pull the sleeve a little to the side at the marking thread. Stitch into place at  $\frac{1}{6}$ ". You'll only have sewn a tiny bit of fabric at the marking thread.



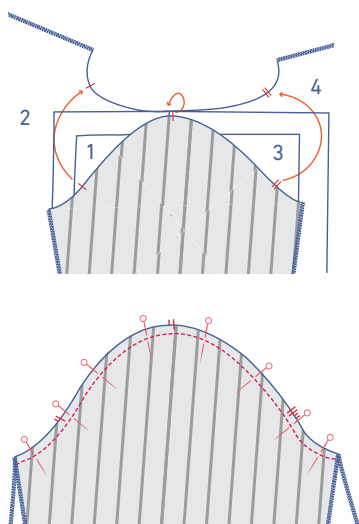
Turn the binding over towards the right side of the sleeve and place the pressed fold line neatly over the stitching. Edge stitch into place.



Fold the sleeve in half crosswise with the right sides facing. Stitch the top of the binding together at an angle.

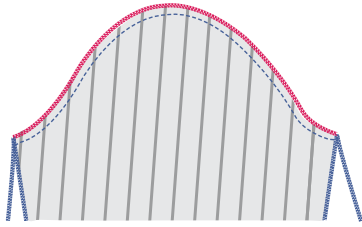


Fold the binding at the front of the sleeve (i.e. the wide part) towards the wrong side of the sleeve and stitch tape into place at presser foot width from the bottom.

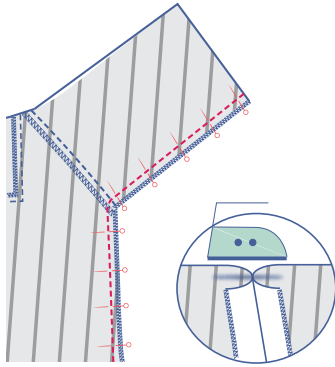


## 6

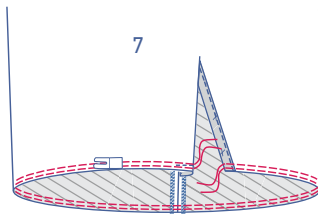
Pin and sew the top of the sleeve (= sleeve cap) to the armhole with the notches matching. The single notch marks the F, while the double notch marks the B. The single notch at the top aligns with the shoulder seam. Distribute the 'excess' fabric evenly between the other single notches.



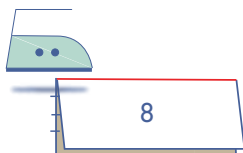
Finish the raw edges with overlock stitching.



Pin and stitch the side and underarm seams and press the seam allowances open.

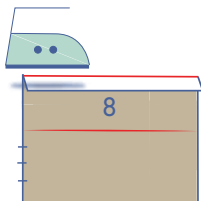
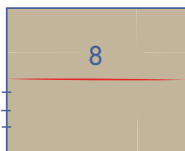


Sew 2 parallel rows of stitching along the sleeve hem with a long stitch at a low thread tension. Leave long thread tails at the start and the end.

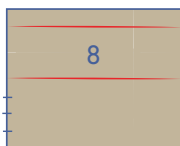


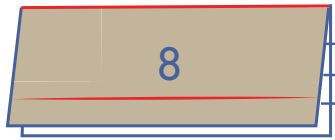
**7**

Fold the cuff (8) in half lengthwise with the wrong sides of the fabric touching to create a fold line. Open back out.

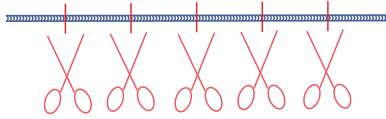


Press 1 long end over towards the wrong side by  $\frac{3}{8}$ " to create a fold line. Open back out again.

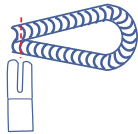




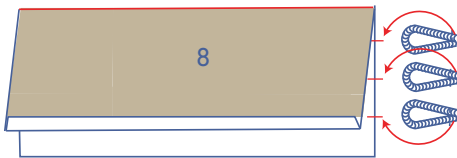
Fold the cuff in half at the pressed fold line with the right sides of the fabric facing.



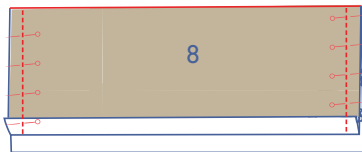
Cut the piece of piping or cord into 6 even pieces.



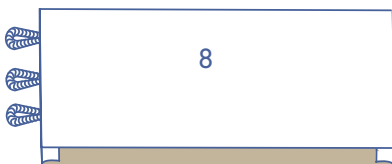
Join the ends of each piece of piping or cord and stitch together.



Slide the tabs in between the short end of the cuff. The ends of the tabs should align with the raw edges of the cuff.

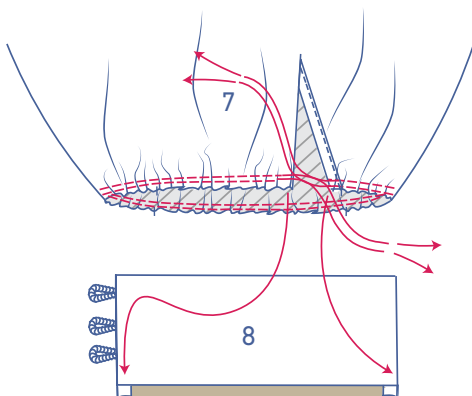


Now, stitch the short ends closed.



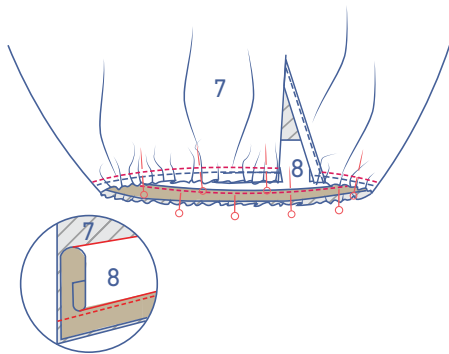
Turn the right way out.

## 8

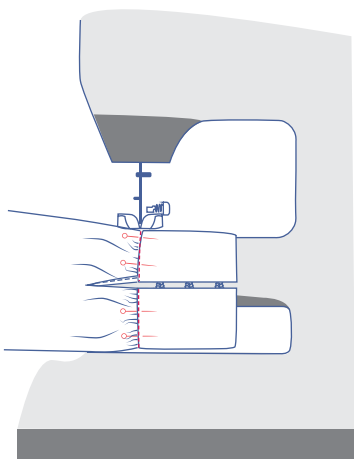


Slide the sleeve over the cuff. Distribute the gathers until the notches and seams of the sleeve and cuff match.





Pin the unpressed raw edge of the cuff to the bottom of the sleeve, matching the notches. Stitch into place.

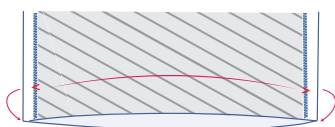


Fold the cuff over to the right side of the sleeve and place the pressed edge directly over the previous stitching. Edge stitch into place.

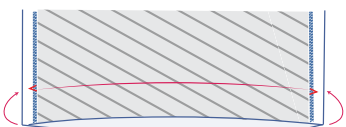


## 9

Press the hem allowance up.



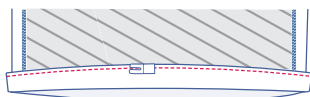
Open back out.

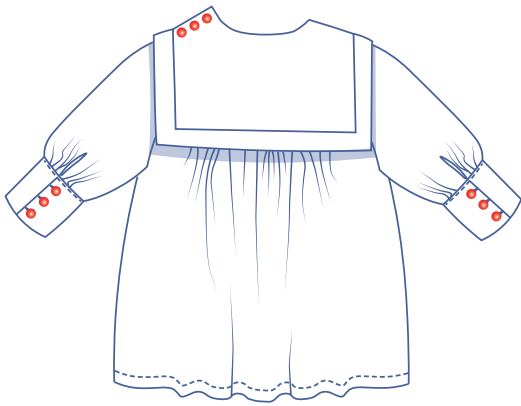


Fold the raw edge up to the pressed fold line. Fold up again.



Sew the hem allowance into place.





---

## 10

Sew the buttons on where indicated.