

# Rosa by Fibre ⚡ood

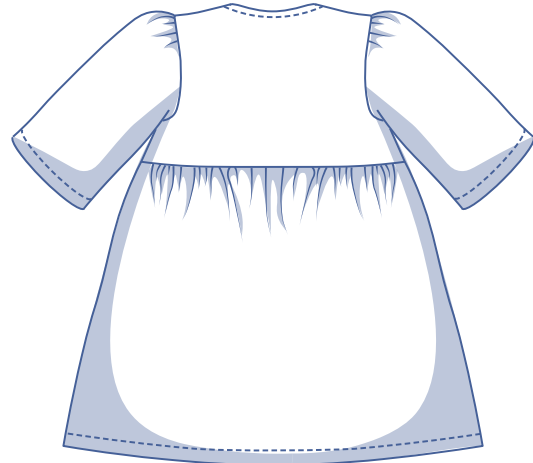
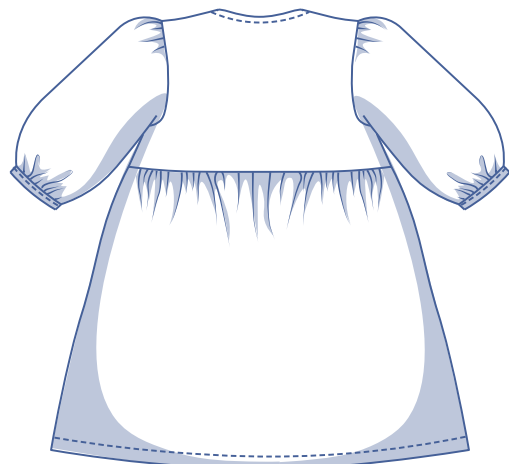


# Rosa by Fibre Mood



2 - 14 y

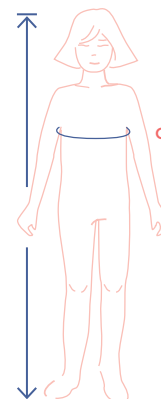
Dreamy and romantic, that's the way Rosa's winds are blowing. It's got every detail a pretty-in-pink girl needs to tickle her fancy, from the convenient patch pockets and simple row of buttons to the way it billows and swirls when spinning around. Look for the delicate ruffles at the waist and the top and bottom of the sleeves, just above the delicate cuff. Not crazy about the cuff? Then leave it off. That way you'll be left with wide three-quarter length sleeves.



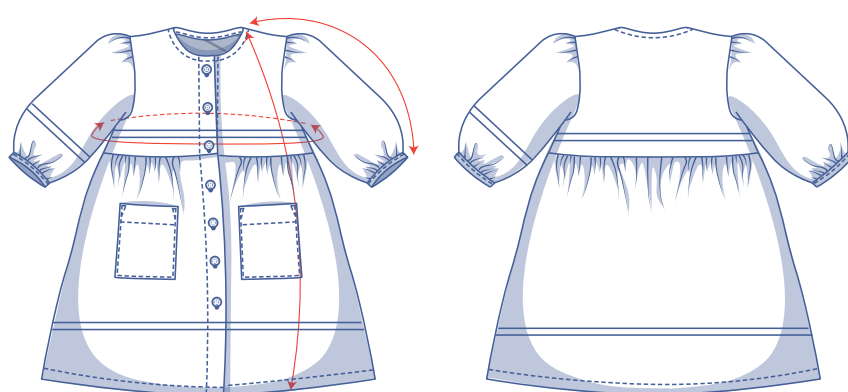
## size chart (in cm)

size	2	3	4	5	6	8	10	12	14
body height	92	98	104	110	116	125	137	150	160
C (chest)	52	54	56	58	60	64	68	72	76

To select the right size for this pattern, the **chest measurement** should be your guideline (regardless of age or height). Pick the size closest to the actual chest measurements. Next, alter the length of the chosen size based on the child's age or height, listed in the table below.



## pattern measurements (in cm)



— shorten or lengthen the pattern here

This chart's measurements are the pattern measurements based on the fabric type and serve as a reference. Ease has been added to the width measurements (in addition to the exact body measurements) for a more comfortable fit. Rosa is designed to have a **comfortable** cut. Depending on the preferred cut, you could possibly go a size smaller or larger than the recommended size.

size	2	3	4	5	6	8	10	12	14
length	45.5	49.75	53.75	58	62.25	70.5	78.75	87	95.25
sleeve length*	27	29.5	32	34.25	36.5	41.25	46.25	51	55.75
chest	67.5	69.5	71.5	73.5	75.5	79.5	83.5	87.5	91.5

\* Including the shoulder length and cuff.

Compare the stated lengths to the measured or desired lengths. **Lengthen** or **shorten** the dress and/or the sleeves by cutting the pattern pieces at the indicated double lines. Then either increase the distance between the cut pieces by the desired amount (to lengthen) or overlap the pieces (to shorten). Make sure that the CF and CB lines and the side seams are always straight.



### IMPORTANT

Adjust the amount of fabric to be used based on these alterations.

## notions



- Thread
- Buttons (Ø 1.1 cm): see table
- Iron-on interfacing: max. 20 cm
- Bias tape: see table
- Fabric: see table

buttons	2	3	4	5	6	8	10	12	14
	6	6	7	7	7	8	9	9	10

bias tape		2	3	4	5	6	8	10	12	14
length	cm	41	42	42.75	43.5	44	45	45.75	46.5	47.25

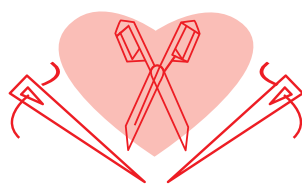
fabric		2	3	4	5	6	8	10	12	14
fabric width 110 cm	cm	103	115	130	145	155	185	205	220	245
fabric width 140 cm	cm	80	85	90	120	125	140	160	175	210

The corresponding fabric layout can be found on page 6 of these sewing instructions.

**fabric advice** Knit fabrics make it difficult to sew some of Rosa's details. For the perfect puff effect, we recommend a more structured woven fabric. Poplin, eyelet lace, etc. will look like a dream!



# Proud to be #Sewista



## pattern pieces & seam allowances (in cm)

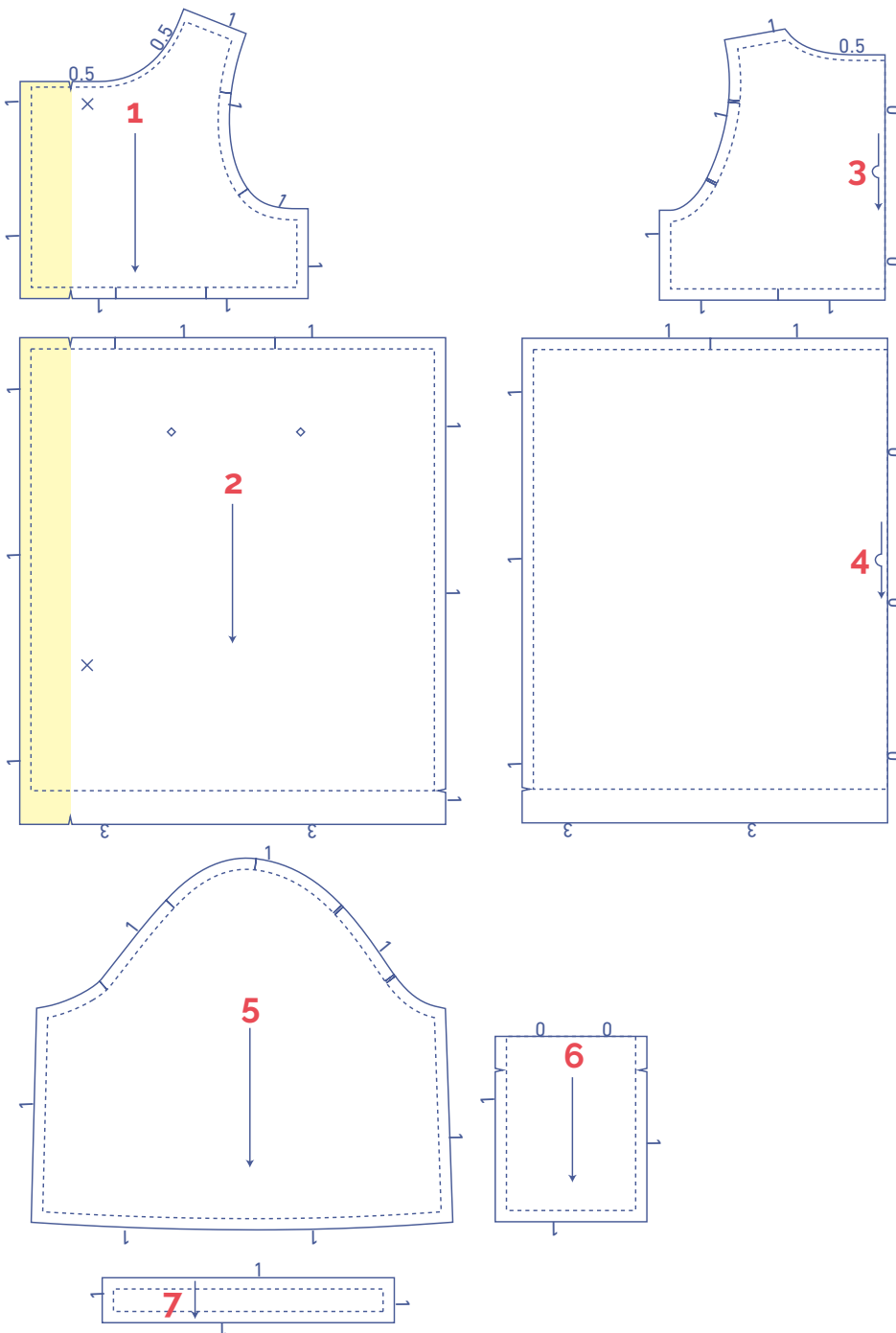
To sew the garment as described in the instructions, draw the illustrated seam allowances around the paper pattern pieces before cutting them out. If you are using a PDF pattern, the pattern can be printed with or without seam allowance.

To find out more, watch the [video](#).

1. top piece front: 2x
2. skirt front: 2x
3. top piece back: 1x on fabric fold
4. skirt back: 1x on fabric fold
5. sleeve: 2x
6. pocket: 2x
7. cuff: 2x

**TIP!**



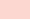
You could also decide to leave off the gathers at the sleeve hem and omit the cuff. If you do, make sure to add additional hem allowance for finishing the seams of the hem so the sleeves are not too short.



**IMPORTANT**

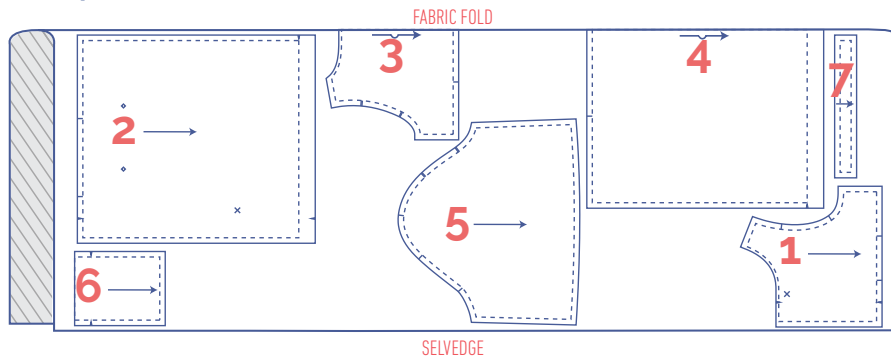
The piece

The pieces highlighted in light yellow have iron-on interfacing attached to the wrong side.

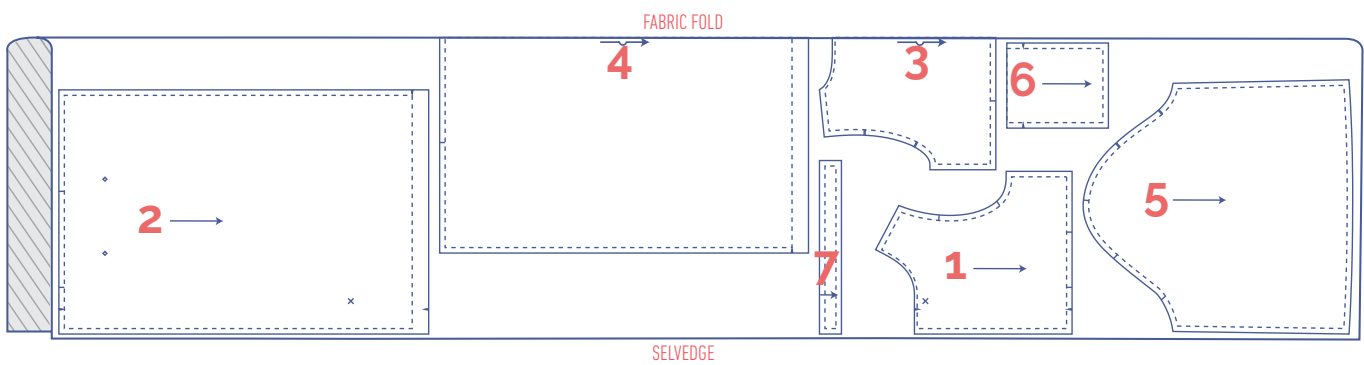
	material type
	fabric
	iron-on interfacing

**fabric layout – solid fabrics**  
**fabric width 110 cm**

**2 - 6 years**

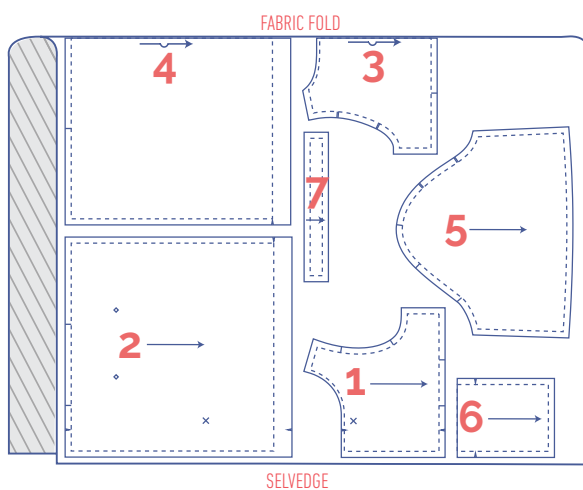


**8 - 14 years**

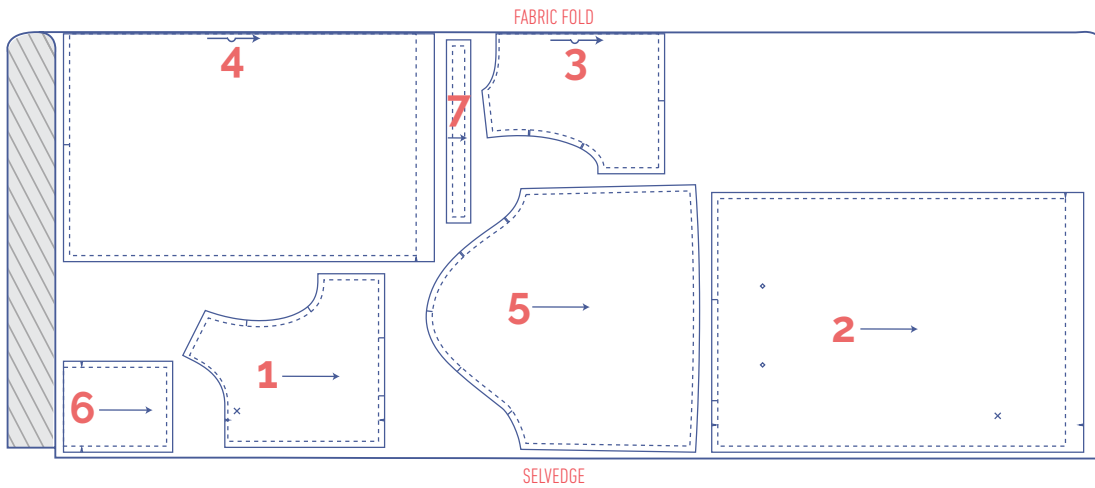


**fabric layout – solid fabrics**  
**fabric width 140 cm**

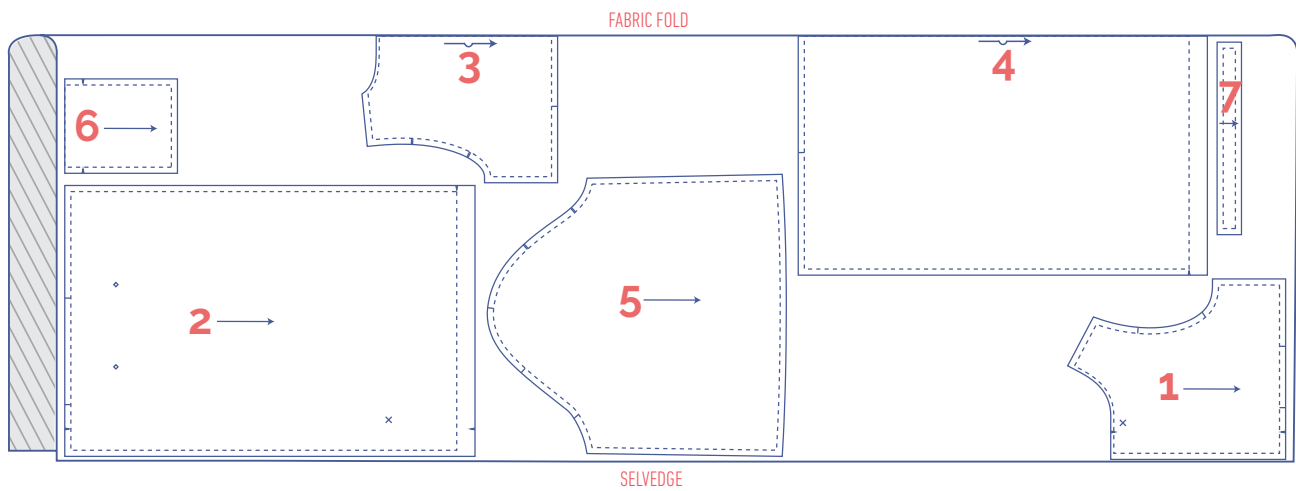
**2 - 4 years**










5 - 12 years



14



## marking pattern pieces

 <p>Notch the pattern paper and fabric at the following points</p>	 <p>Mark the following points using marking thread</p>
 <p>single notch</p>	 <p>centre point</p>
 <p>double notch</p>	 <p>buttons</p>
 <p>V notch</p>	

# sewing instructions



The method used to finish the seams depends on the fabric used.  
The pieces are always sewn together with the right sides of the fabric matching, unless stated otherwise.

F front

B back

RF right front

LF left front

CF centre front

CB centre back



right side



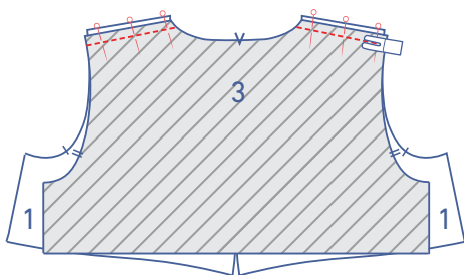
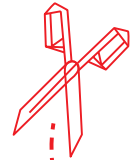
wrong side



iron-on interfacing



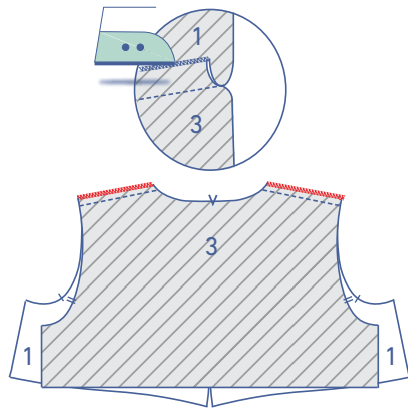
bias tape



**1**

Pin and sew the shoulder seams of the top piece front (1) to the top piece back (3).

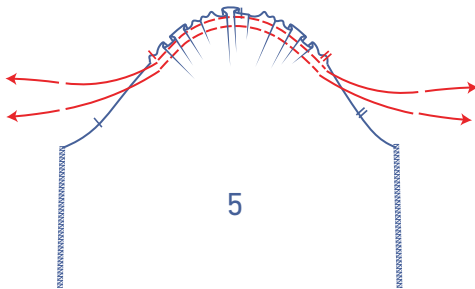
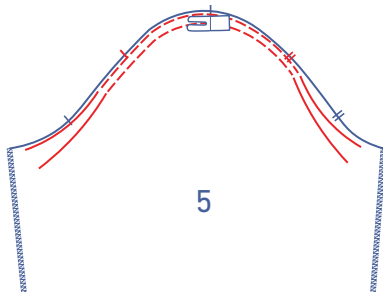




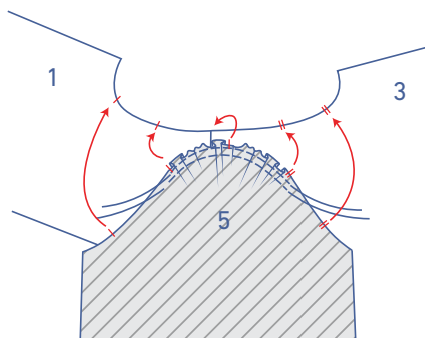
Finish the raw edges together with overlock stitching and press the seam allowance towards the front.

## 2

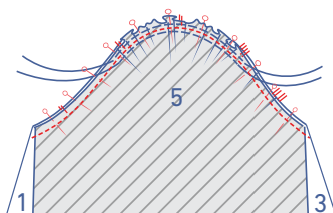
Sew two parallel rows of stitching at presser foot width from the top of the sleeve (5) with a long stitch length at a low thread tension. Sew just past the illustrated notches. Leave a length of thread at the start and end of the rows.

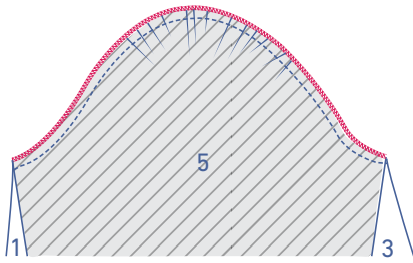


Carefully tug the ends of the threads to gather the fabric into ruffles.

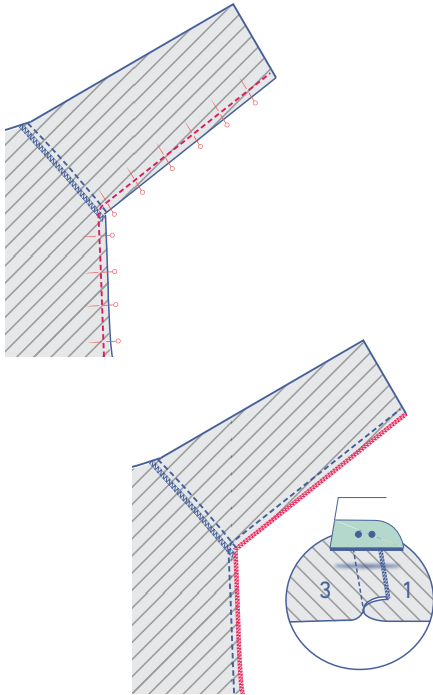


Pin and sew the top of the sleeve (= sleeve cap) to the armhole with the notches matching. The single notches mark the front, while the double notches mark the back. The single notch at the top aligns with the shoulder seam. Distribute the 'excess' fabric evenly between the other single notches. Remove the gathering threads.





Finish the raw edges with overlock stitching.



### 3

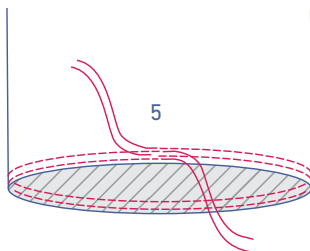
Pin and sew the side and underarm seams.

Finish the raw edges with overlock stitching. Press the seam allowance towards the front.

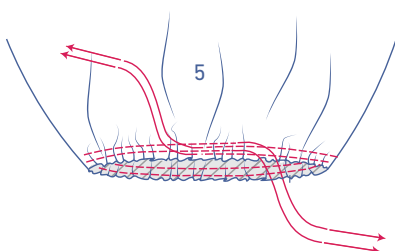
### 4

#### Tip

You could also decide to leave off the gathers at the sleeve hem. In that case, just omit those steps and finish the seams of the hem based on the type of fabric you are using.



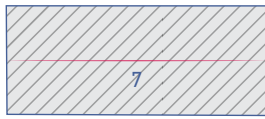
Sew 2 parallel rows of stitching on the sleeve hem with a long stitch length at a low thread tension. Leave long thread tails at the start and end.



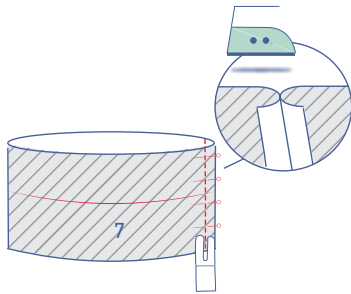
Carefully tug the gathering threads to create ruffles in the fabric.



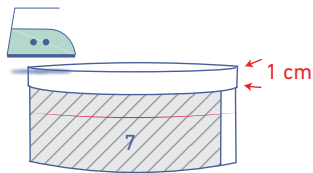
Press the cuff (7) in half lengthwise to create a fold line.



Open back out.



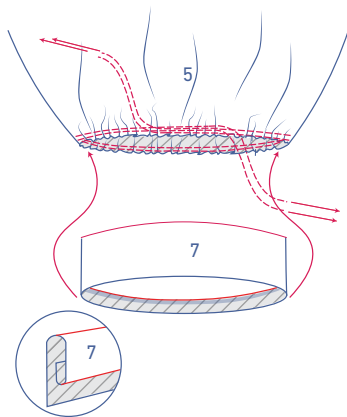
Fold the cuff in half crosswise with the right sides of the fabric facing. Pin and sew the short ends together. Press the seam allowance open.



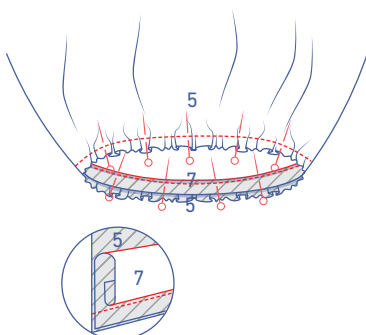
Press 1 long end of the cuff 1 cm towards the wrong side.

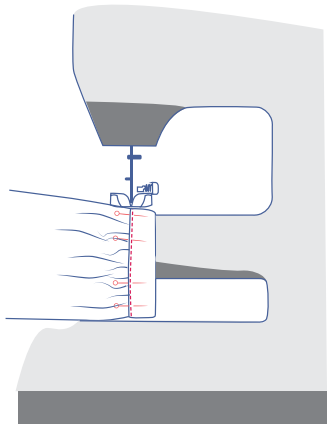


Slide the cuff into the sleeve. Pin the unpressed raw edge of the cuff to the bottom of the sleeve, matching the notches.

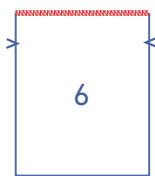


Distribute the gathers until the notches and seams of the sleeve and cuff match. Stitch into place. Remove the gathering threads.



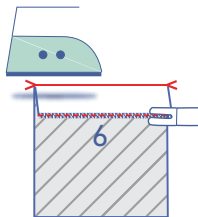


Fold the cuff over to the right side of the sleeve and place the pressed edge directly over the previous stitching. Edge stitch into place.

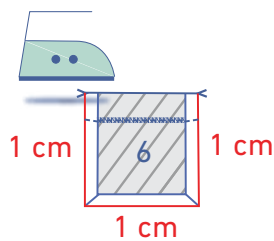


## 5

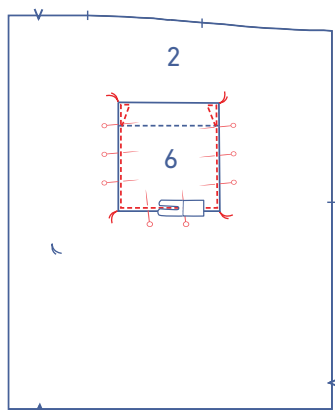
Finish the indicated raw edge of the pocket (6) with overlock stitching.



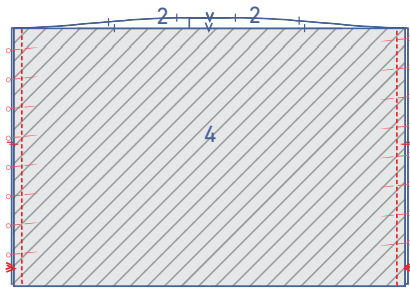
Press the top of the pocket towards the wrong side at the V notches and stitch into place.



Press 1 cm of the edges towards the wrong side, where indicated.

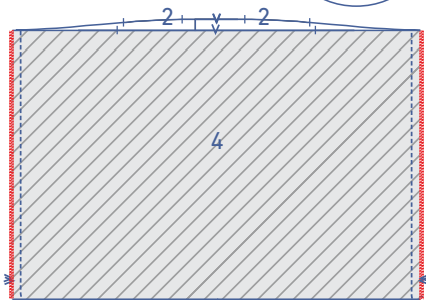
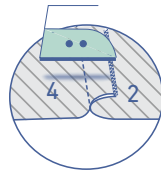


Pin the pocket to the skirt piece front (2) where indicated. Edgestitch into place. Sew reinforcement triangles at the top on both sides.

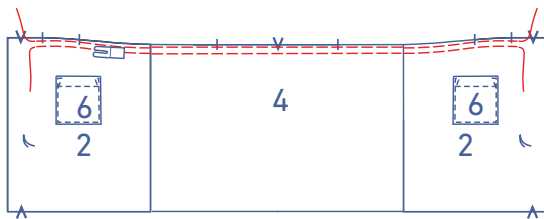


## 6

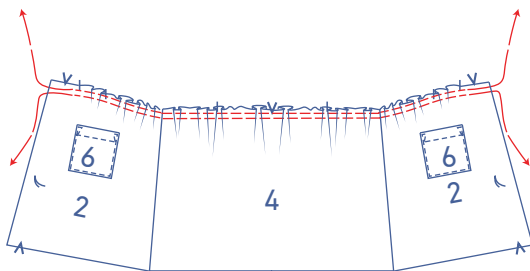
Pin and stitch the side seams of the front (2) and back (4) skirt pieces together.



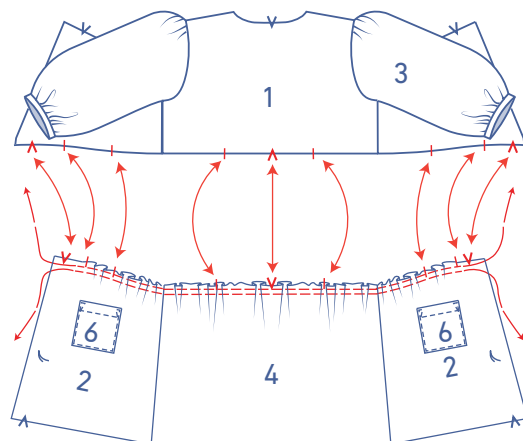
Finish the raw edges with overlock stitching. Press the seam allowance towards the front.



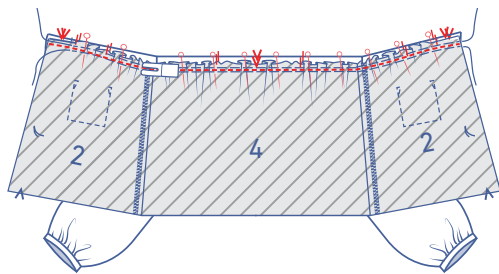
Sew 2 parallel rows of stitching at the top of the skirt with a long stitch length at a low thread tension, starting from the first notch after the V notch. Leave a length of thread at the start and end of the rows.



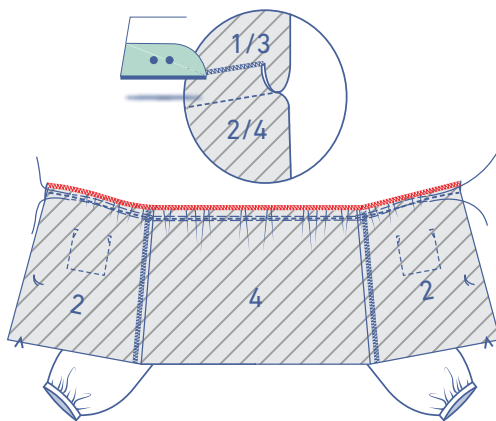
Carefully tug the ends of the threads to gather the fabric into ruffles.



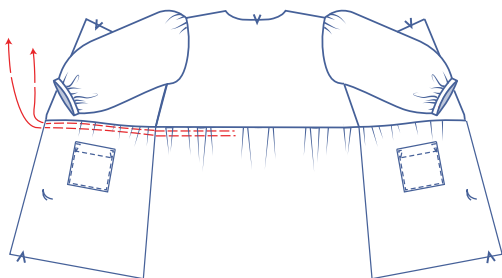
Distribute the ruffles so that the notches in the skirt pieces match the notches in the top pieces.



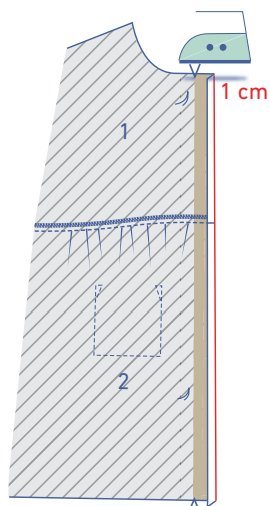
Lay the skirt on top of the bodice, right sides together. Pin and sew both pieces together with the notches matching.



Finish the raw edges with overlock stitching. Press the seam allowance towards the bodice.

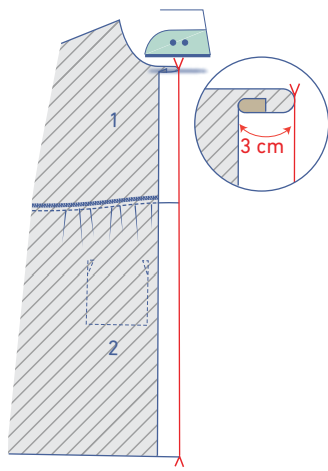


Remove the gathering threads.

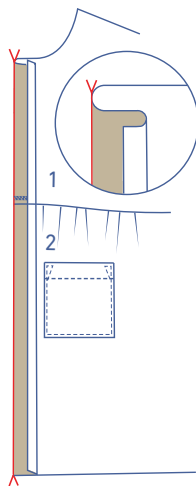


**7**

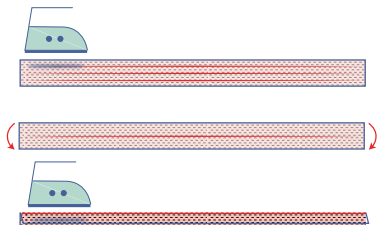
First, press 1 cm of the CF seam allowance towards the wrong side.



Now, press 3 cm over towards the wrong side at the V notches.

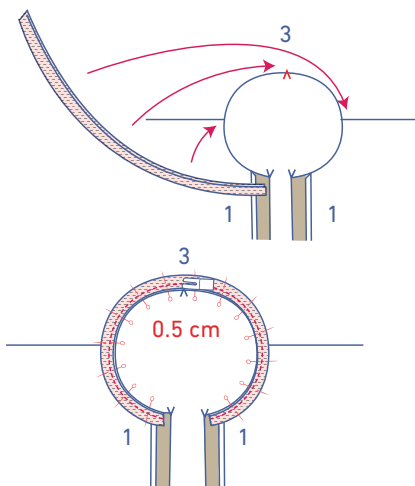


Open back out. Fold the facing at the neckline over at the V notch with the right side facing the right side of the top piece front.



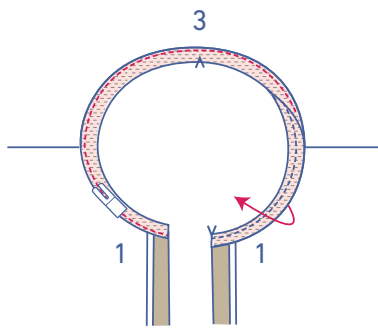
## 8

Open the pre-pressed bias tape out and press flat. Then press the bias tape in half lengthwise with the wrong sides touching.

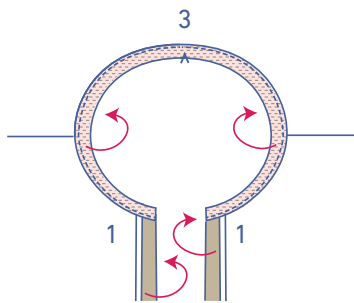


Pin both raw edges of the bias tape to the right side of the neckline. The ends should lie on top of the folded facing but don't quite extend to the fold line.

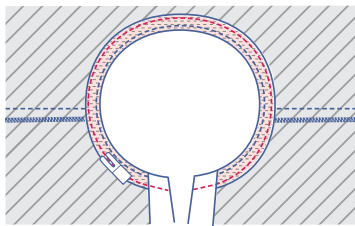
Stitch into place at 0.5 cm.



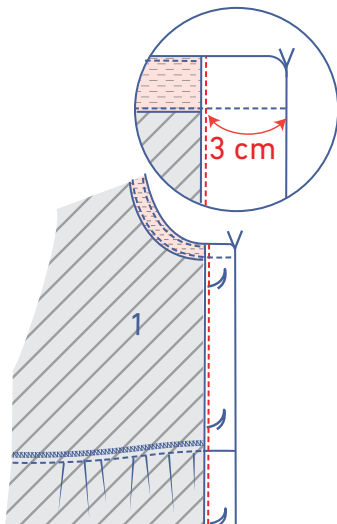
Fold the bias tape and seam allowance over and stitch the bias tape to the seam allowance underneath, right next to the seam.



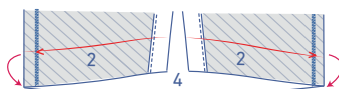
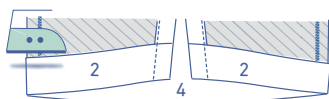
Fold the facing and bias tape all the way over to the wrong side.



Stitch the bias tape into place right next to the edge.



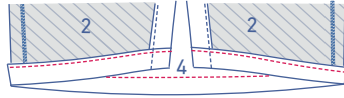
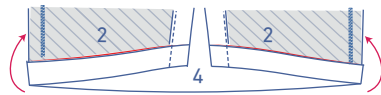
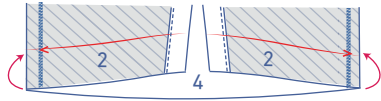
Stitch the facing into place right next to the edge.



**9**

Press the hem allowance of the dress up at the V notches and open back out.



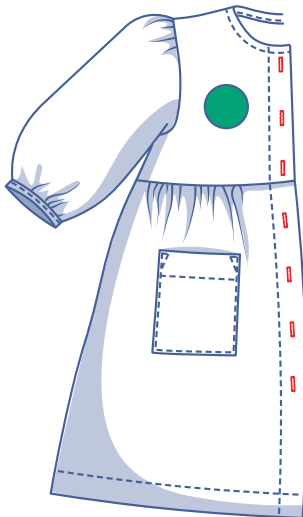
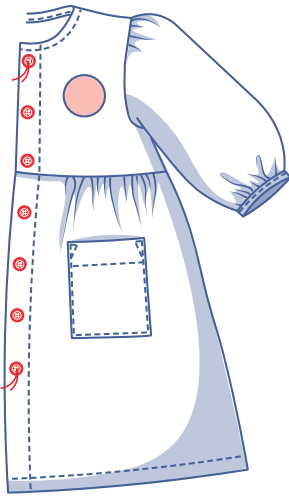


Fold the raw edge to the pressed fold line and fold up again.

Sew into place next to the edge.

## 10

Sew the buttons to the LF. The location of the top and bottom buttons have been marked on the pattern for you. Divide the distance equally to determine the location of the other buttons.



Make buttonholes on the RF based on the location of the buttons.