

Noelle by Fibre ⚡ood

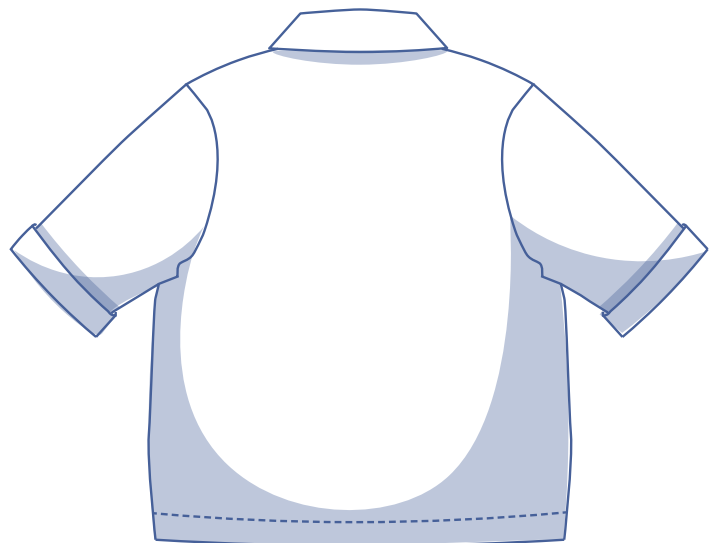


Noelle by Fibre ood



XS - XXXL

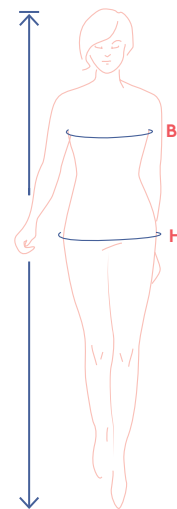
Once you're wearing this blazer, you won't ever want to take it off again... We adore Noelle's strong yet gentle look. Noelle has a loose cut, three-quarter length sleeves, sophisticated welt pockets, and is double breasted. For the seam finish, we kept it simple. That way it won't be long before you're wearing your own Noelle and making the most out of spring.



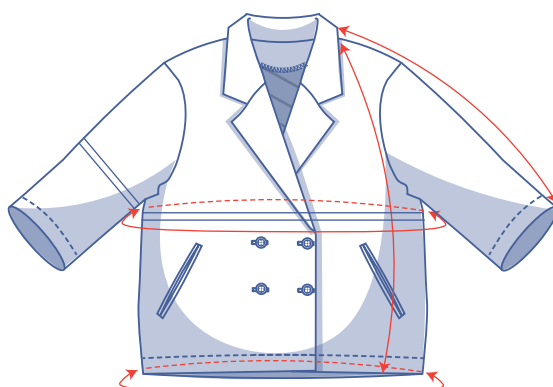
size chart (in cm)

size	XS		S		M		L		XL		XXL		XXXL		
	4	6	8	10	12	14	16	18	20	22	24	26	28	30	32
body height	160	164	166	167	168	169	170	171	172	172	172	172	172	172	172
B (bust)	76	80	84	88	92	96	100	104	110	116	122	128	134	140	146
H (hips)	86	90	94	97	100	103	106	109	115	120	125	130	135	140	145

Choose your size based on your **bust measurement**. If your hip measurements are wider than those in the size chart, check the hem circumference in the chart below to see if there's enough room or whether the pattern needs to be altered. It's easy to do. Simply trace the line of the one size instead of the other.



pattern measurements (in cm)



— shorten or lengthen the pattern here

This chart's measurements are the pattern measurements based on the fabric type and serve as a reference. Ease has been added to the width measurements (in addition to the exact body measurements) for a more comfortable fit. Noelle is designed to have an **oversized** cut. Depending on the preferred cut, you could decide to go a size smaller or larger than the recommended size.

size	XS	S	M	L	XL	XXL	XXXL
length	72	73	74	76.25	78.75	81.5	83
sleeve length*	63.75	65.25	66.75	68.5	70.75	72.5	74.5
bust	107	109.5	123	131	141	153	165
hem circumference	111	113.5	127	135	145	157	169

*Including shoulder length.



Compare the stated lengths to the measured or desired lengths. **Lengthen** or **shorten** the blazer and/or sleeves by cutting the pattern pieces at the indicated double lines. Then either increase the distance between the cut pieces by the desired amount (to lengthen), or overlap the pieces (to shorten). Make sure that the CF and CB lines and the side seams are always straight.



IMPORTANT

Adjust the amount of fabric to be used based on these alterations.

notions



- Thread
- Iron-on interfacing: max. 95 cm
- Buttons (Ø 2.5 cm): 4
- Fabric: see table

fabric		XS	S	M	L	XL	XXL	XXXL
fabric width 110 cm	cm	290	290	295	330	350	360	375
fabric width 140 cm	cm	210	220	225	240	265	275	290

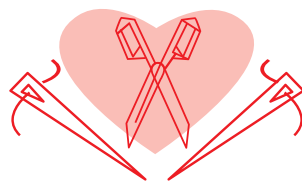
The corresponding fabric layout can be found on page 6 of these sewing instructions.

fabric advice



Noelle looks divine in loads of different fabrics. Prefer a jacket with good structure? Go for cotton twill, denim, or elasticised cotton. Looking for a design with a more fluid drape that has a softer look? Try linen, Tencel or gabardine.

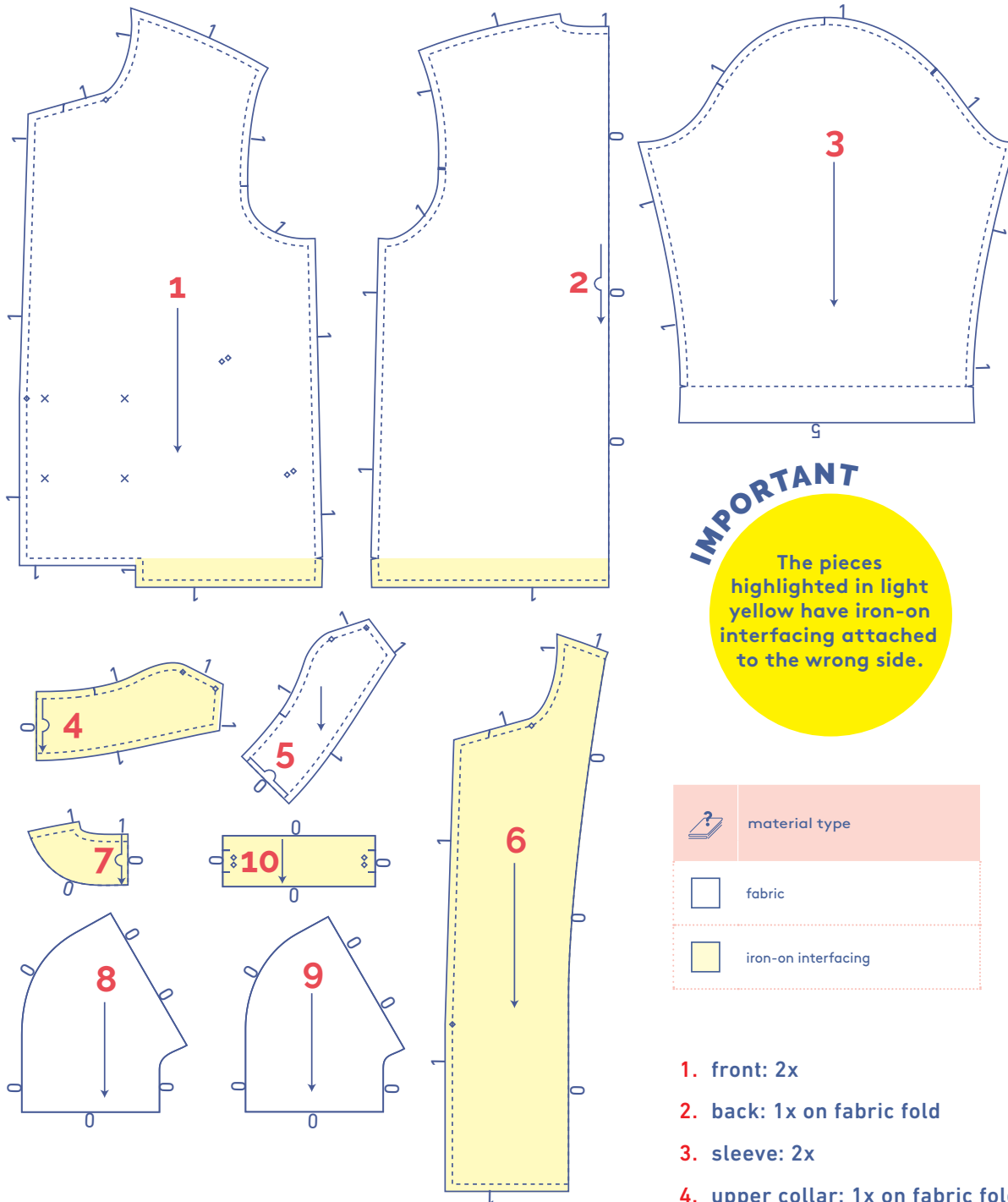
Proud to be #Sewista



pattern pieces & seam allowances (in cm)



To sew the garment as described in the instructions, draw the illustrated seam allowances around the paper pattern pieces before cutting them out. If you are using a PDF pattern, the pattern can be printed with or without seam allowance.

To find out more, watch the [video](#).



IMPORTANT

The pieces highlighted in light yellow have iron-on interfacing attached to the wrong side.

?	material type
	fabric
	iron-on interfacing

1. front: 2x
2. back: 1x on fabric fold
3. sleeve: 2x
4. upper collar: 1x on fabric fold
5. under collar: 1x on fabric fold
6. facing F: 2x
7. facing B: 1x on fabric fold
8. pocket: 2x
9. inner pocket bag: 2x
10. pocket welt: 2x

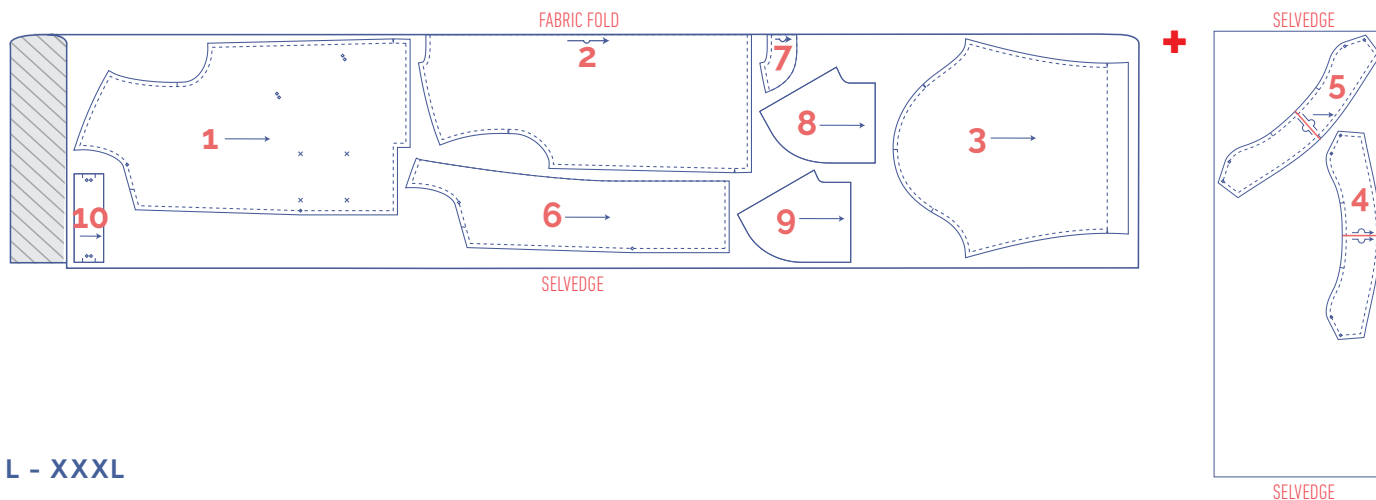
TIP

The under collar is smaller than the upper collar and is cut on the bias. By cutting on the bias, the under collar is more flexible and thus pulls the lapped seam towards the bottom so that the seam is not visible on the right side.

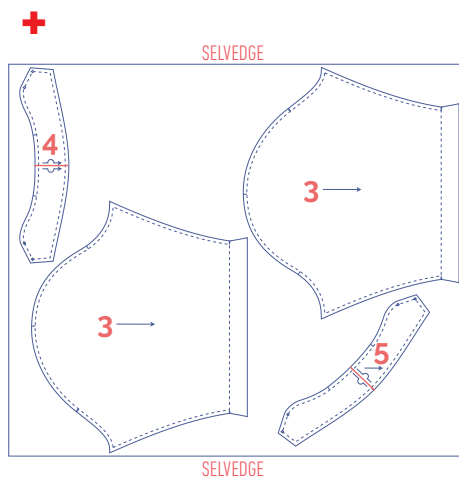
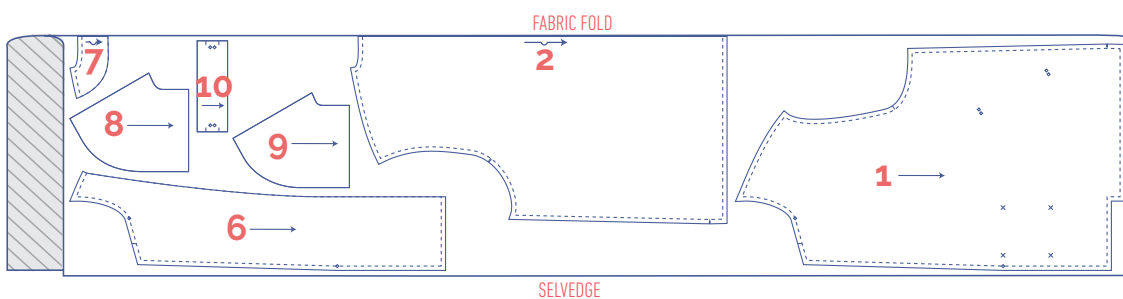
fabric layout – solid fabrics

fabric width 110 cm

XS - M



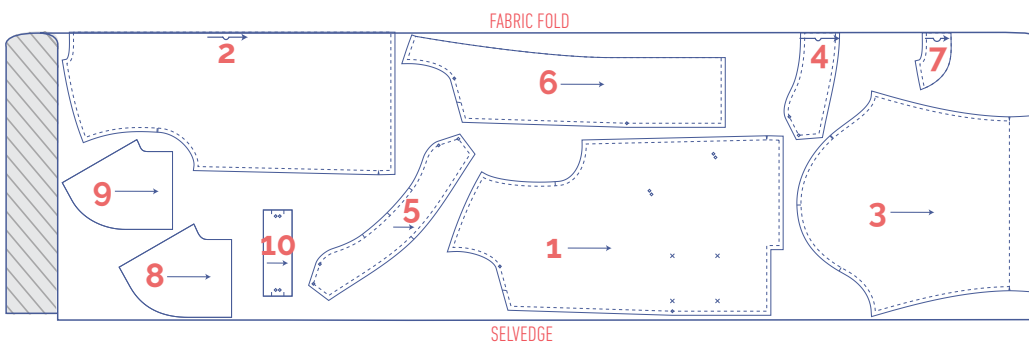
L - XXXL



fabric layout – solid fabrics

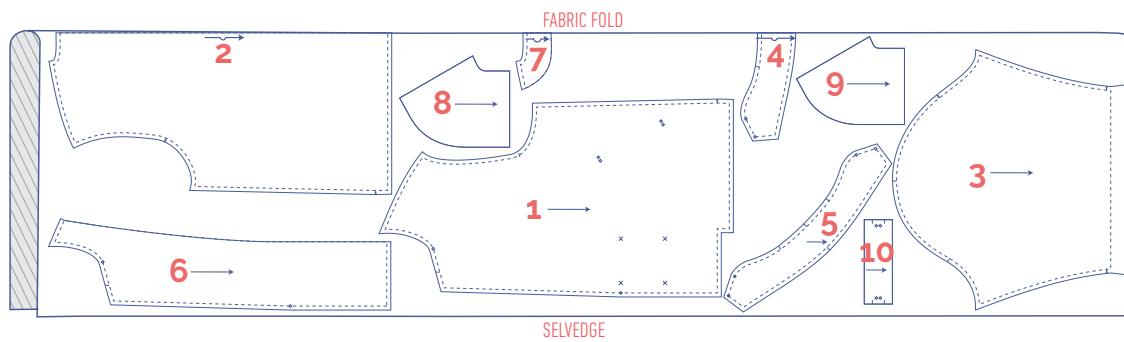
fabric width 140 cm

XS - L

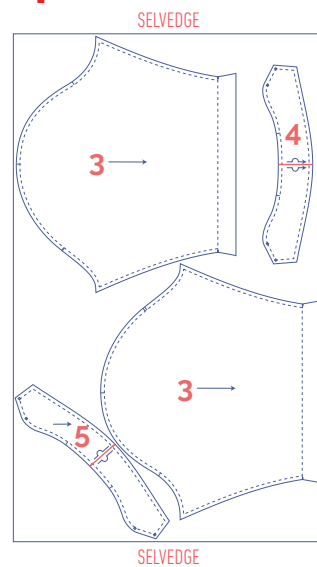
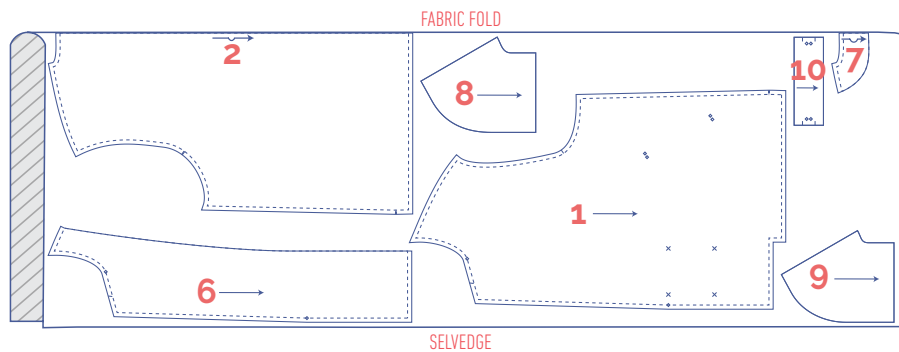


IMPORTANT

You only need pattern piece 5 once.



IMPORTANT
You only need pattern piece 5 once.



marking pattern pieces



Notch the pattern paper and fabric at the following points

I single notch

II double notch

V V notch



Mark the following points using marking thread



centre point






buttons

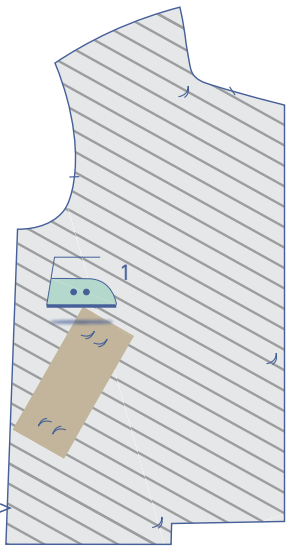
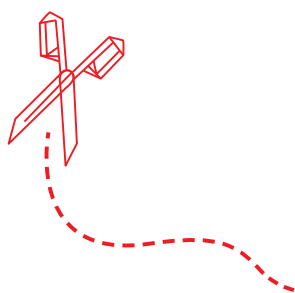
sewing instructions



The method used to finish the seams depends on the fabric used.
The pieces are always sewn together with the right sides of the fabric facing, unless stated otherwise.

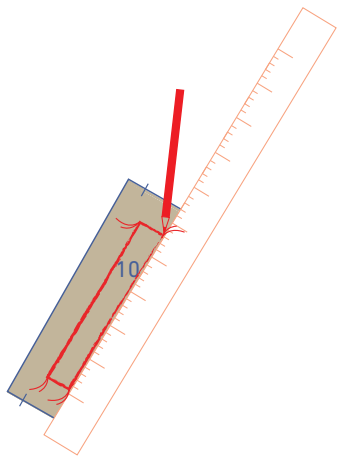


F	front	
B	back	
RF	right front	●
LF	left front	●
CF	centre front	
CB	centre back	
	right side	
	wrong side	
	iron-on interfacing	

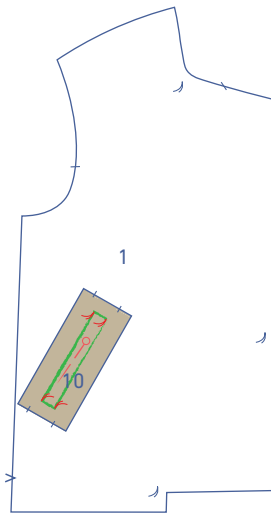


1

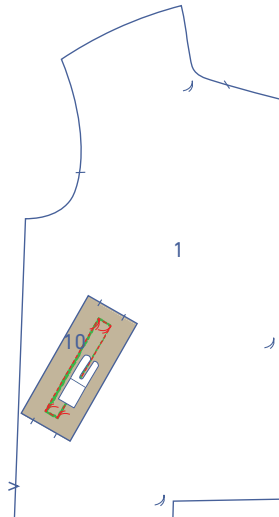
Press a strip (2 x 19 cm) of iron-on interfacing onto the wrong side of the F (1) at the designated place in the diagram.



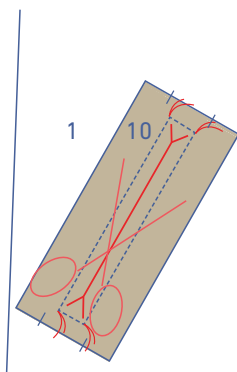
Connect the marking threads on the pattern pieces for the pocket welt (10) using chalk or pencil so that you create a neat right angle.



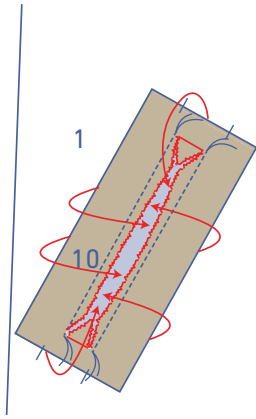
Pin the pocket welt to the right side of the F, matching the marking threads.



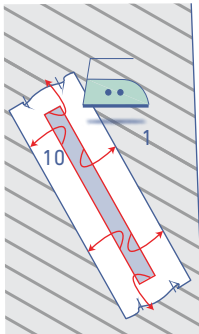
Sew the piece to the F precisely along the lines that you drew.



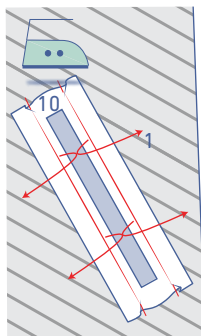
Cut through both layers of fabric, precisely in the middle between two rows of stitching until slightly before the corners. From here, trim each of the corners at an angle. Appliqué scissors are useful for this step if you have them.



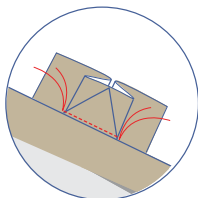
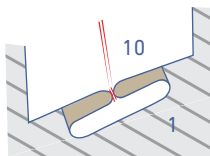
Push the welt + the triangles (created when snipping) through the opening you just cut to the wrong side of the F.



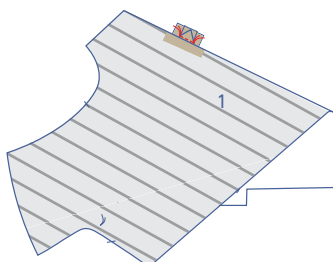
Lay the garment with the wrong side facing up. Press this piece neatly flat and make sure that you have created a nice, clean right angle.

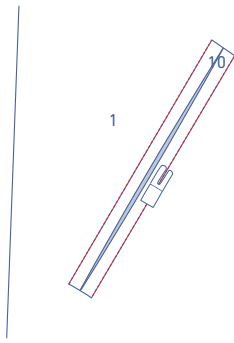


Press each of the pocket welt pieces at the red line (= the connecting line between the two notches) to the centre so that these lines lie neatly against each other and the gap is closed. You have now shaped the trims.

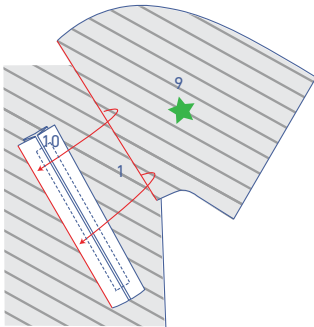


Fold back the front piece so you can see the welt and triangle. Check that both folded trims are in the correct position (refer to diagram) and lie neatly against each other. Stitch across the triangle between the marking threads.

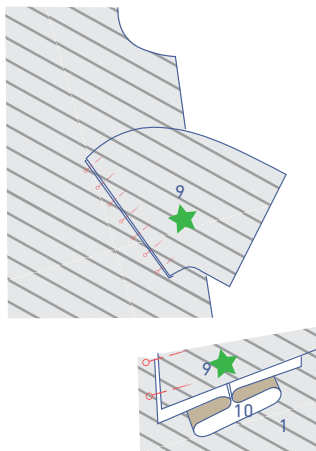




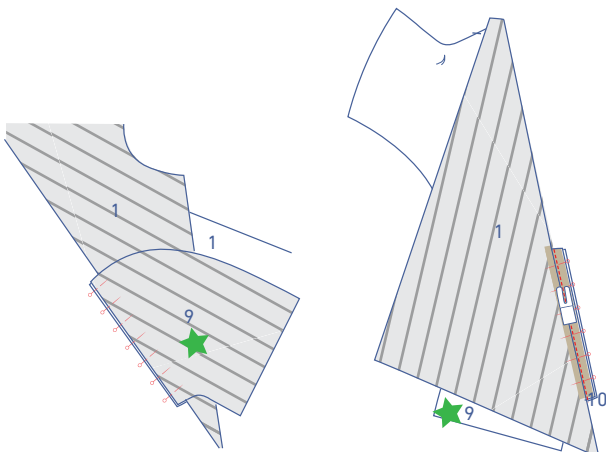
Turn your work so that the right side is facing up. Stitch in the ditch on the outer edge of the trims to secure the welt.



Turn your work over so that the wrong side is facing up.

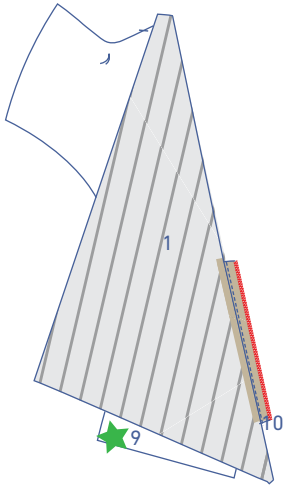


Pin the inner pocket bag (9), marked with a green star, to the raw edge of the bottom pocket welt piece.

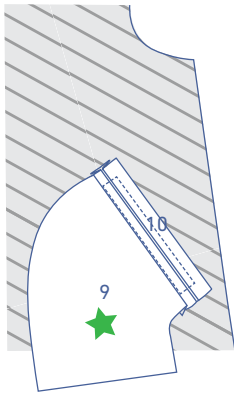


Fold the piece of the F so it is out of the way (underneath the pocket). Turn over your work again so that you can sew the inner pocket bag to the pocket welt. Do this as close to the previous line of stitching as possible.

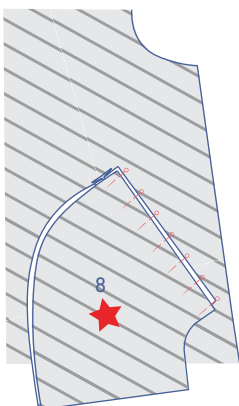
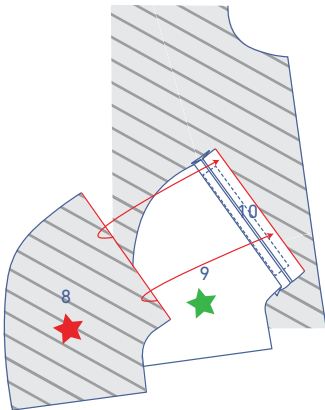
Finish the raw edges with overlock stitching.

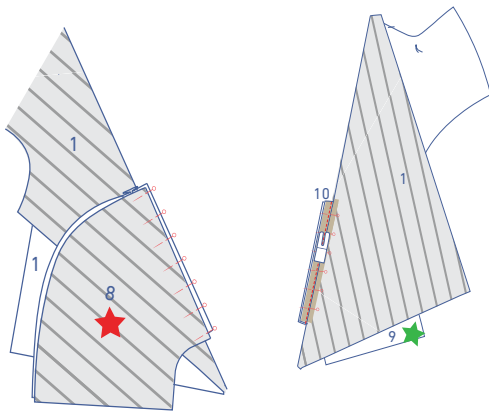


Lay the F in front of you so that the wrong side is facing up and the inner pocket bag folded down.

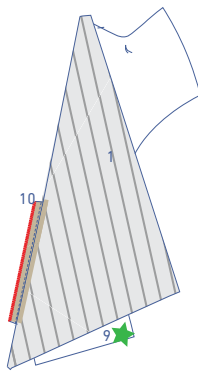


Pin the pocket (8), marked with the red star, to the raw edge of the top pocket welt piece.

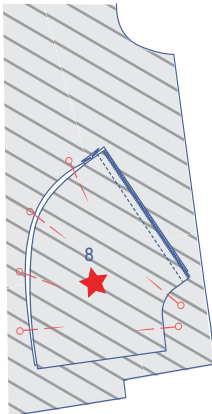




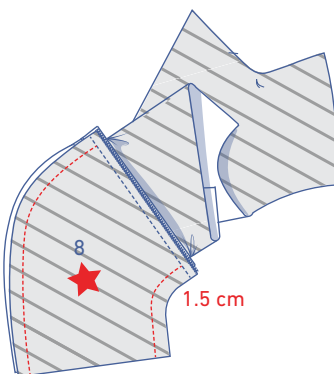
Fold the piece of the F that is out of the way, above the pocket to the side. Turn over your work again so that you can sew the inner pocket bag to the pocket welt. Do this as close to the previous line of stitching as possible.

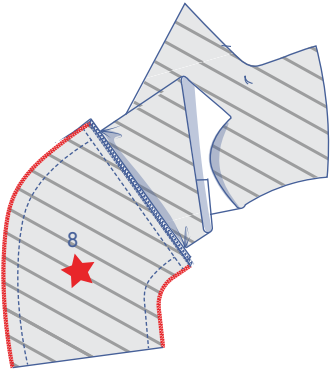


Finish the raw edges with overlock stitching.

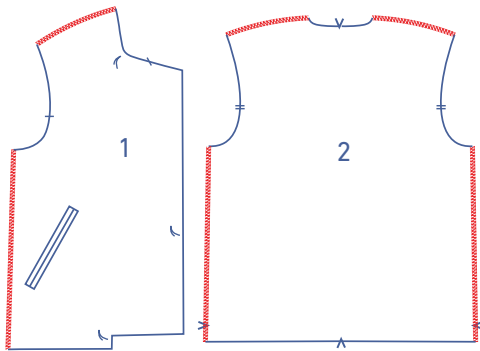


Pin and sew the sides of the pocket pieces together at 1.5 cm.



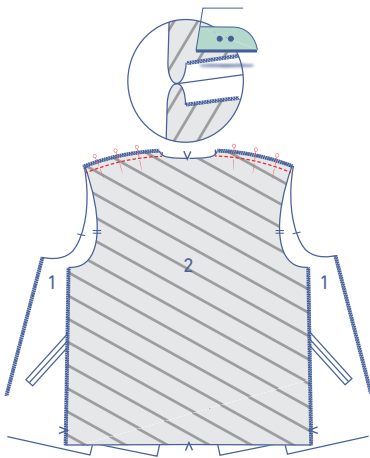


Finish the raw edges with overlock stitching.

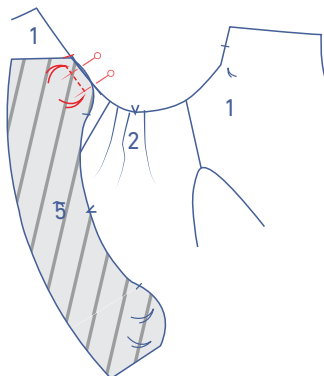


2

Finish the shoulder and side seams of the F and B (2) with overlock stitching.

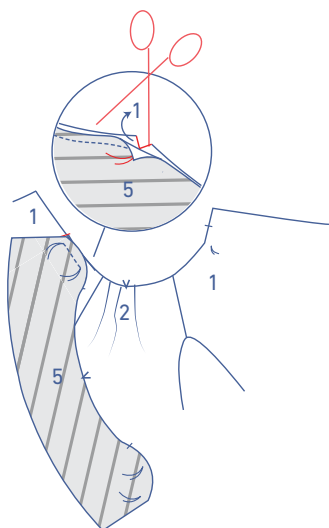


Pin and stitch the shoulder seams. Press the seam allowances open.

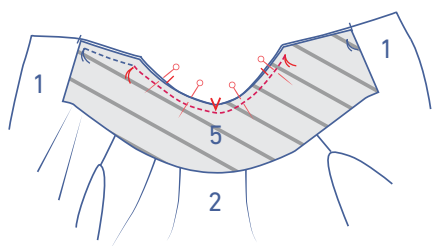


3

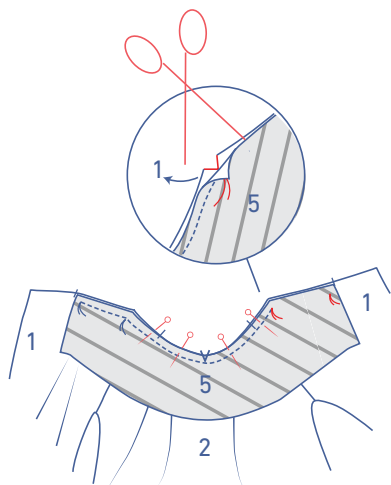
Place the under collar (5) right-side down onto the front neckline. The short, angled, raw edge of the collar should line up with the diagonal notch. Start sewing from the marking thread and sew up to the next marking thread in the corner.



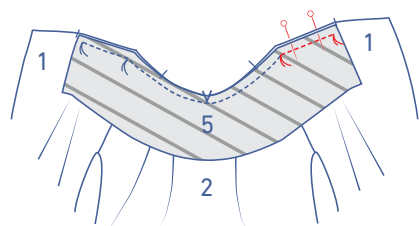
Now, leave the needle in the corner, lift the presser foot, fold over the corner/tip of the collar and snip into the seam allowance of the F until just before the needle.



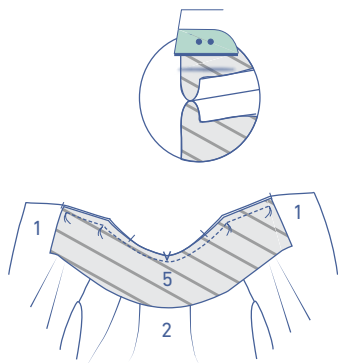
Turn the top so that you can stitch the collar to the neckline of the top and lower the presser foot back down. Stitch into place up to the next marking thread in the corner, matching the notches in the collar to the shoulder seams and CB.



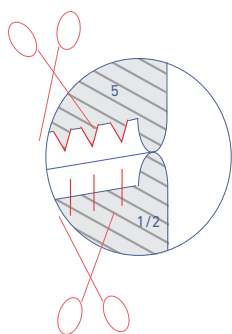
Now, leave the needle in the corner, lift the presser foot, fold over the corner/tip of the collar, and snip into the seam allowance of the F until just before the needle.



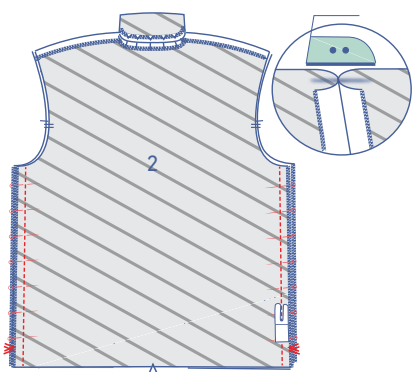
Turn the top so that you can stitch the last section of the under collar into place. Lower the presser foot back down and sew up to the marking thread.



Press all of the seam allowances neatly open.

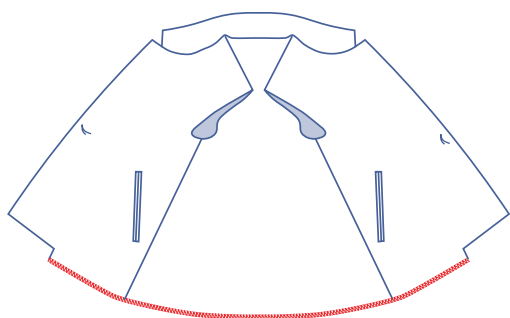


Notch both seam allowances so that the seams aren't too tight and don't tug anywhere.

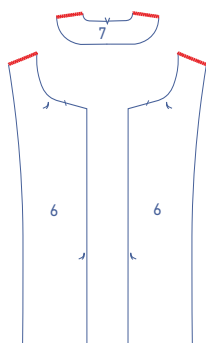


4

Pin and sew the side seams and press the seam allowance open.

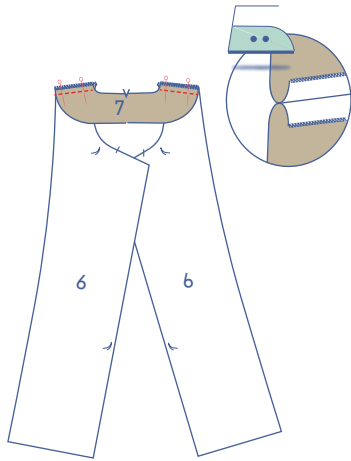


Finish the hem with overlock stitching.

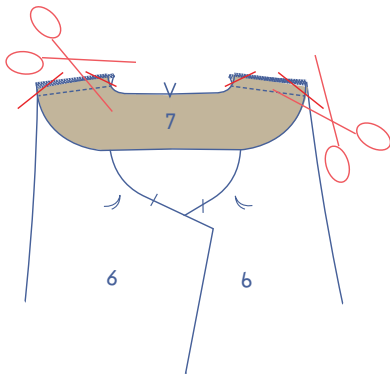


5

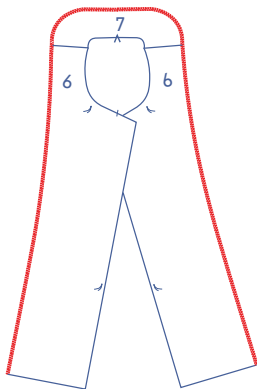
Finish the shoulder seams of the F (6) and B (7) facings with overlock stitching.



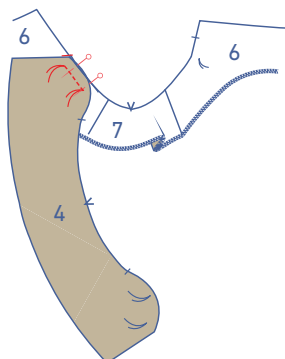
Pin and stitch the shoulder seams. Press the seam allowances open.



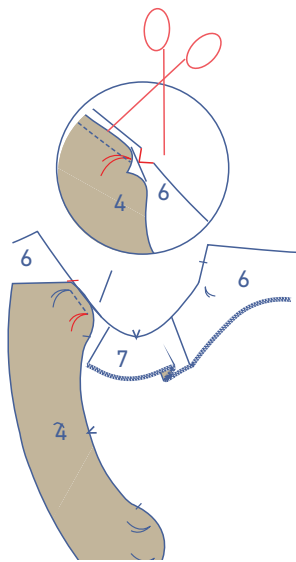
Trim the seam allowance at the tips to prevent the fabric from bunching.



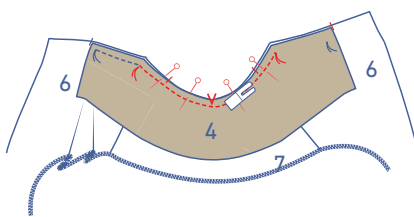
Overlock the outer edges of the facings where indicated.



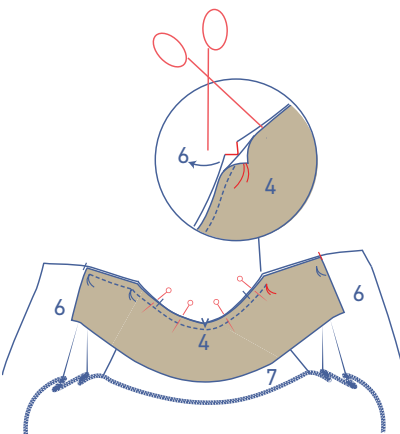
Place the upper collar (4) onto the facing (6), right sides together. The short edge of the collar should line up with the diagonal notch. Start sewing at the marking thread up to the next marking thread.



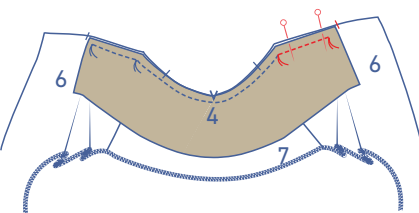
Now, leave the needle in the corner, lift the presser foot, fold over the corner/tip of the collar and snip into the seam allowance of the facing until just before the needle.



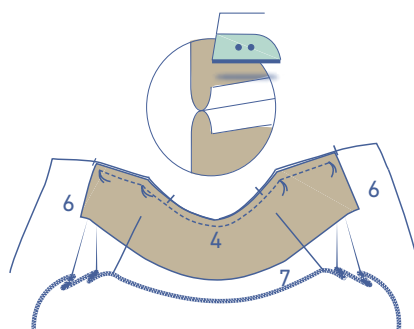
Turn the top so that you can stitch the collar to the neckline of the facing and lower the presser foot back down. Stitch into place up to the next marking thread in the corner, matching the notches in the collar to the shoulder seams and CB.



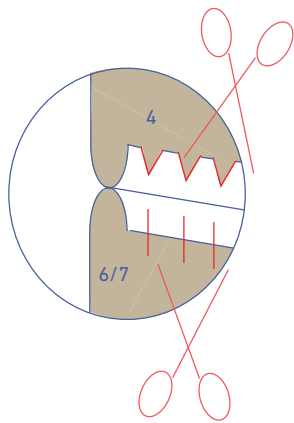
Now, leave the needle in the corner, lift the presser foot, fold over the corner/tip of the collar and snip into the seam allowance of the facing until just before the needle.



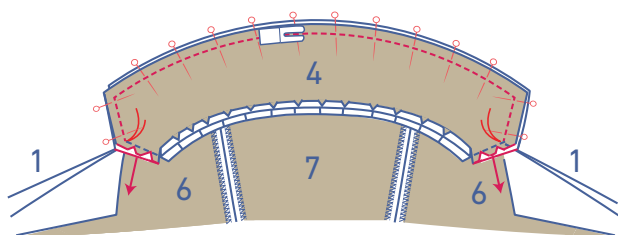
Turn the top so that you can stitch the last section of the collar into place. Lower the presser foot back down and sew up to the marking thread.



Press all of the seam allowances neatly open.

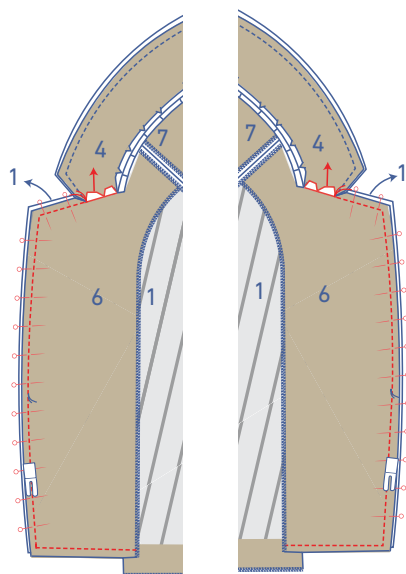


Notch both seam allowances so that the seams aren't too tight and don't tug anywhere.

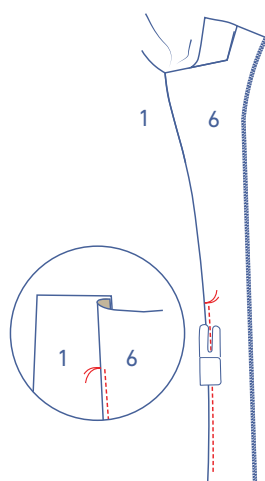


6

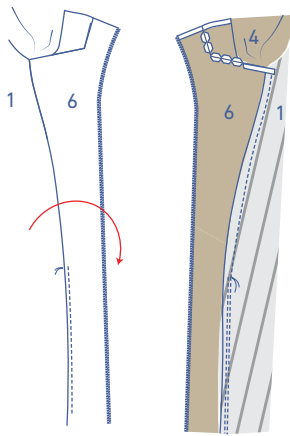
Pin and sew the upper and lower collar together. Pin the collar pieces together and stitch from marking thread to marking thread.



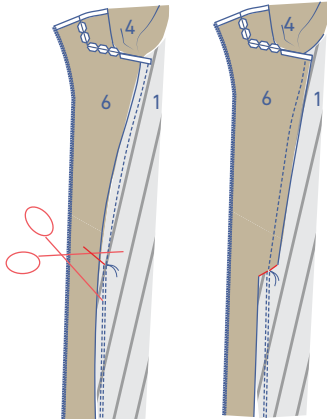
Now, pin the lapels to the CF lines. To join, start sewing from the marking thread in the intersection of the collar and the lapel, making sure the collar's seam allowance has been folded over so that you can easily sew from the marking thread.



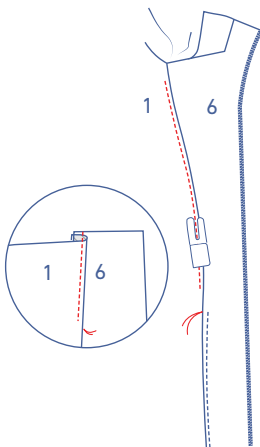
Then fold the facing to the side (as much as you possibly can) so that the right side is facing up. Sew the facing to the seam allowance underneath, right next to the seam, from the hem to the marking thread. Sew as far as you can here.



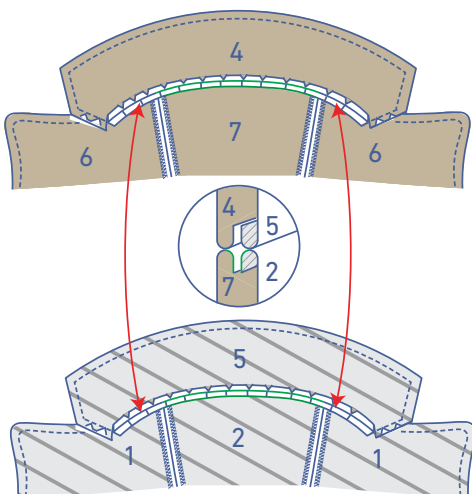
Turn the garment so that the wrong side is facing up.



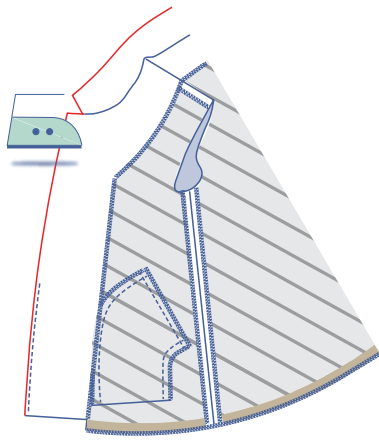
Snip into the seam allowance until just before the marking thread, so that the seam allowance above the marking thread can lie towards the F.



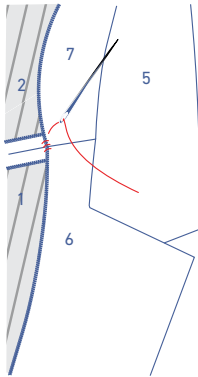
Lay the garment with the right side facing up. Sew the F to the seam allowance underneath as far as possible.



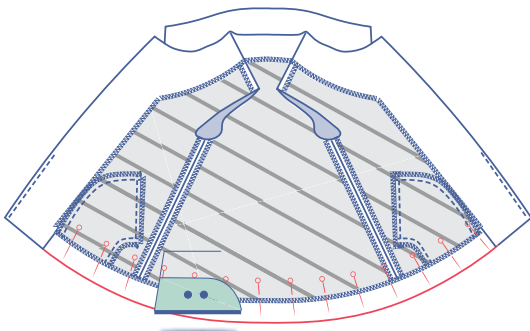
Sew the seam allowances of the neckline, which have been pressed open, together from shoulder to shoulder.



Turn the facing pieces towards the wrong side and press neatly flat.

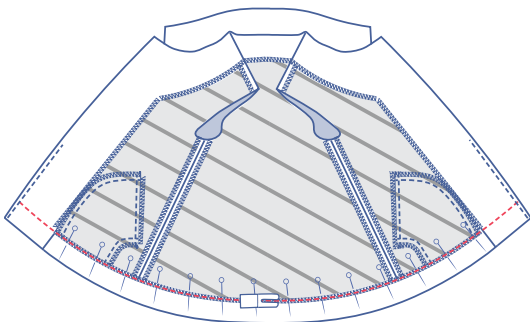


Join the shoulder seams with a few stitches by hand.

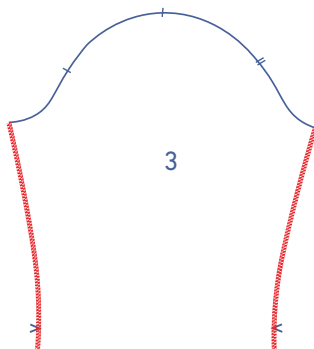


7

Press the hem allowance over and pin into place.

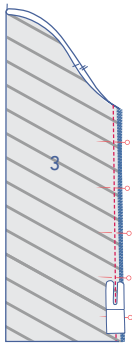


Stitch into place. Make sure that the pocket is under the pressed hem allowance.

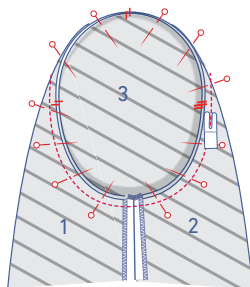


8

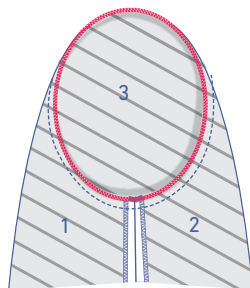
Finish the sides of the sleeve (3) with overlock stitching.



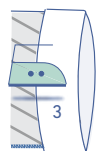
Pin and sew the sides.



Pin the top of the sleeve to the armhole, matching the markings. The notch in the sleeve should match the single notch in the F, and the double notch in the sleeve should match the double notch in the B. Once these and the top single sleeve notch are matching the shoulder point, stitch into place.

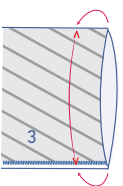
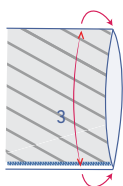


Finish the raw edges with overlock stitching.

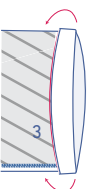


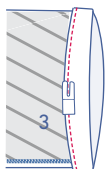
9

Press the hem allowance of the sleeve over at the V notches on the wrong side and then open back out.



Match the raw edge to the pressed fold line and fold up again.

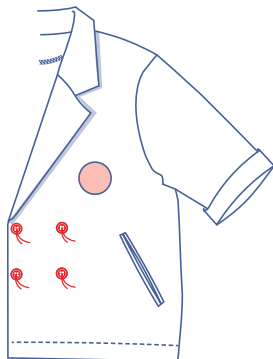




Sew together right along the edge.

10

Sew the buttons on the LF at the indicated places.



Make buttonholes in the RF based on the location of the buttons.

