

Mae by Fibre ⚡ood

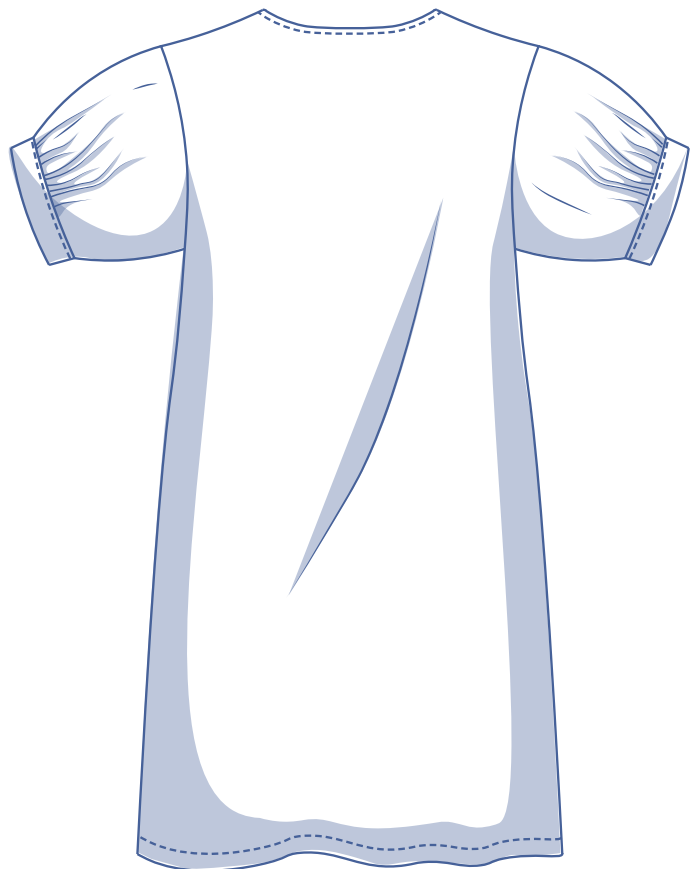


Mae by Fibre Mood



XS - XXXL

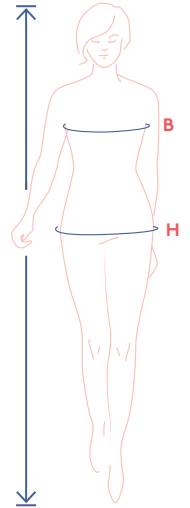
This is the ideal dress for summer temperatures.
Whether you're out at the beach, by the pool, or on a stroll
through the city, Mae loves to keep you company.



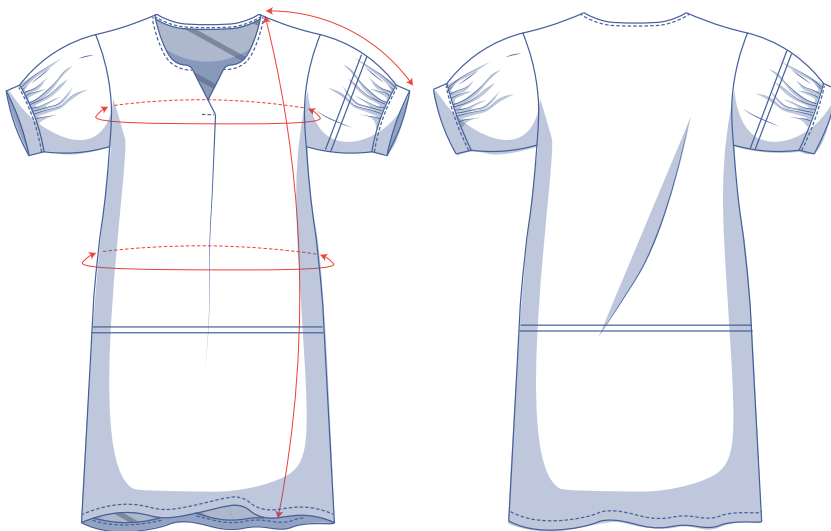
size chart (in cm)

size	XS		S		M		L		XL		XXL		XXXL		
	4	6	8	10	12	14	16	18	20	22	24	26	28	30	32
body height	160	164	166	167	168	169	170	171	172	172	172	172	172	172	172
B (bust)	76	80	84	88	92	96	100	104	110	116	122	128	134	140	146
H (hips)	86	90	94	97	100	103	106	109	115	120	125	130	135	140	145

Choose your size based on your **bust measurement**. If your hip measurements are wider than those in the size chart, check the hip measurements in the chart below to see if there's enough room or whether the pattern needs to be altered. It's easy to do. Simply trace the line of the one size instead of the other.



pattern measurements (in cm)



== shorten or lengthen the pattern here

This chart's measurements are the pattern measurements based on the fabric type and serve as a reference. Ease has been added to the width measurements (in addition to the exact body measurements) for a more comfortable fit. Mae is designed to be **oversized**.

Not terribly keen on oversized items? Feel free to go a size smaller.

size	XS	S	M	L	XL	XXL	XXXL
length	119	120	121.25	122.25	124.75	126.5	128
sleeve length*	45.25	46.25	47.25	48.25	49.25	50.25	51.25
bust	97	105	113	121	131	143	156
hips	104.5	112.5	120.5	128.5	138.5	150.5	163

* Including shoulder length and cuff.

Compare the stated lengths to the measured or desired lengths. **Lengthen** or **shorten** the dress and/or the sleeves by cutting the pattern pieces at the indicated double lines. Then either increase the distance between the cut pieces by the desired amount (to lengthen) or overlap the pieces (to shorten). Make sure that the CF and CB lines and the side seams are always straight.



IMPORTANT

Adjust the amount of fabric to be used based on these alterations.

notions



- Thread
- Iron-on interfacing: max. 25 cm
- Fabric: see table

fabric		XS	S	M	L	XL	XXL	XXXL
fabric width 110 cm	cm	305	310	310	345	350	360	365
fabric width 140 cm	cm	280	285	285	290	295	295	320

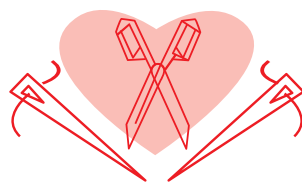
The corresponding fabric layout can be found on page 6 of these sewing instructions.

fabric advice



Make Mae in fabric with a fluid drape, such as double gauze, crepe, lyocell, or silk. However, if you've got statement sleeves in mind, you're better off with a crisp fabric, such as poplin, linen, chambray, Broderie Anglaise, or other embroidered fabrics.

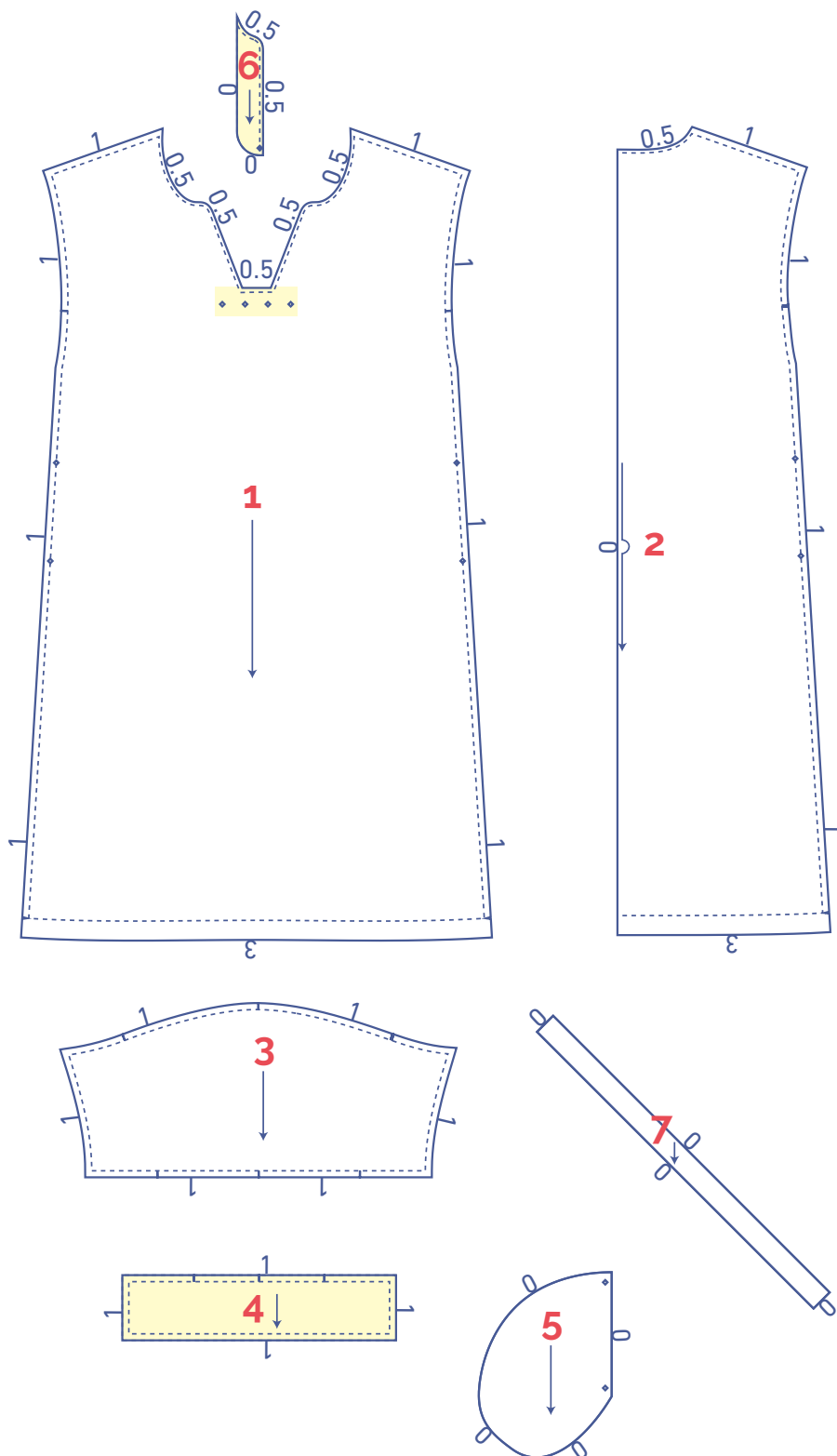
Proud to be #Sewista



pattern pieces & seam allowances (in cm)

To sew the garment as described in the instructions, draw the illustrated seam allowances around the paper pattern pieces before cutting them out. If you are using a PDF pattern, the pattern can be printed with or without seam allowance.

To find out more, watch the [video](#).



1. front: 1x
2. back: 1x on fabric fold
3. sleeve: 2x
4. cuff: 2x
5. pocket: 4x
6. facing: 2x
7. bias tape: 1x

IMPORTANT

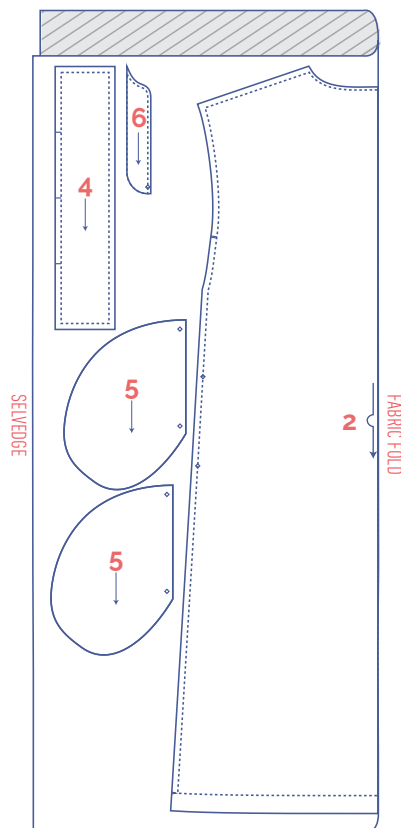
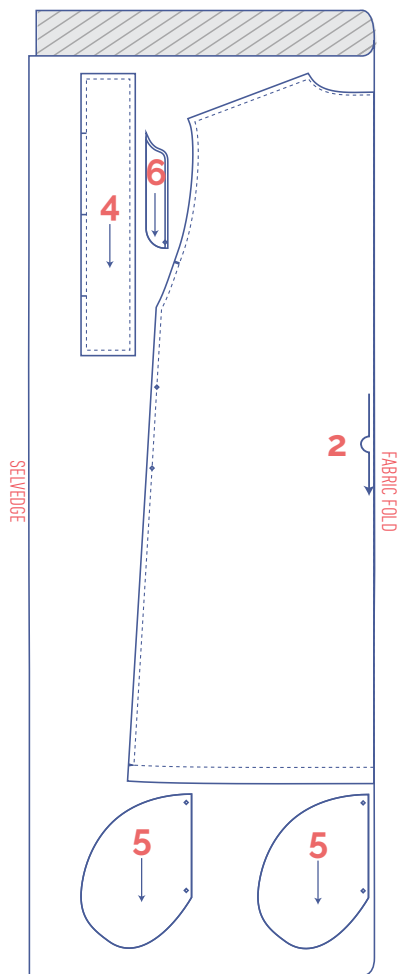
The pieces highlighted in light yellow have iron-on interfacing attached to the wrong side.

?	material type
	fabric
	iron-on interfacing

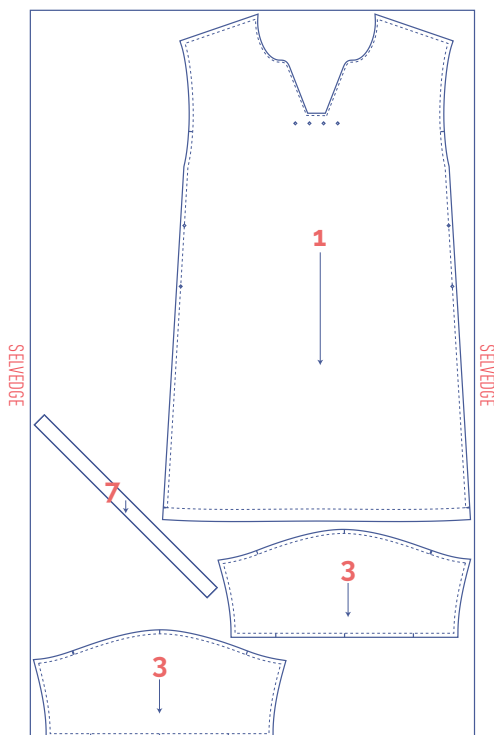
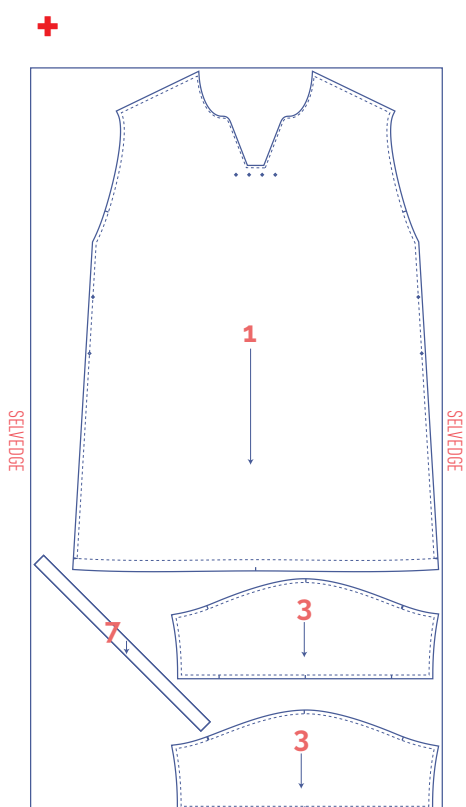
fabric layout – solid fabrics
fabric width 110 cm

XS - M

L - XXXL



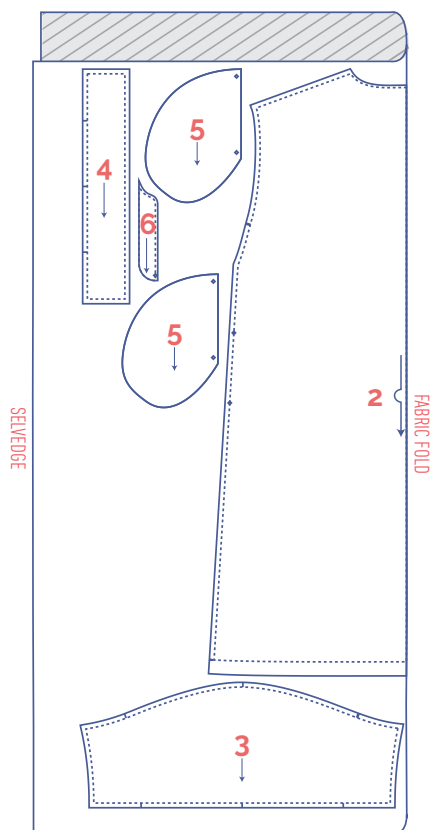
+



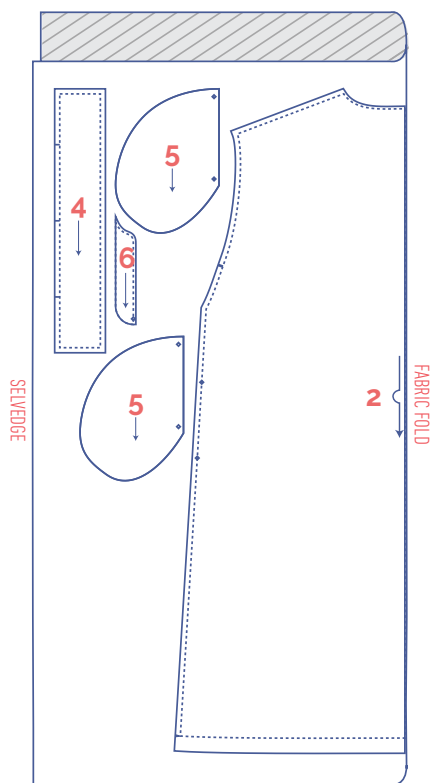
fabric layout – solid fabrics

fabric width 140 cm

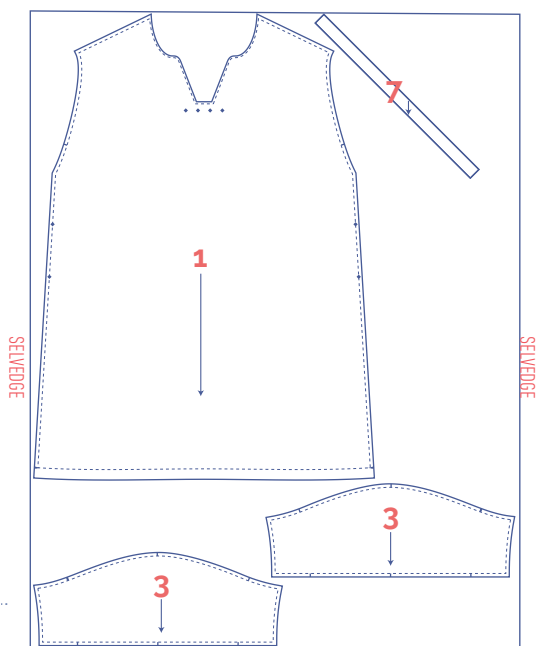
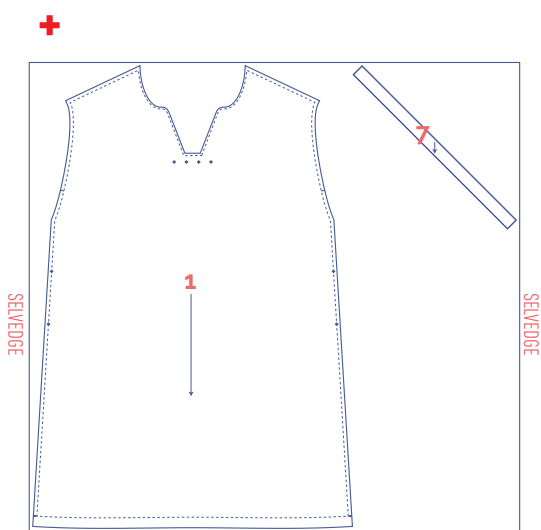
XS - XXL



XXXL



+



marking pattern pieces



Notch the pattern paper and fabric at the following points

I single notch

II double notch

V V notch



Mark the following points using marking thread



centre point

sewing instructions



The method used to finish the seams depends on the fabric used.
The pieces are always sewn together with the right sides of the fabric facing, unless stated otherwise.

F front

B back

CF centre front

CB centre back



right side



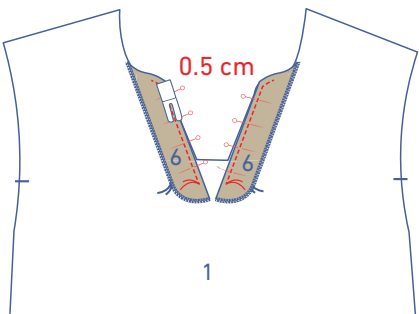
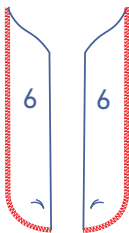
wrong side



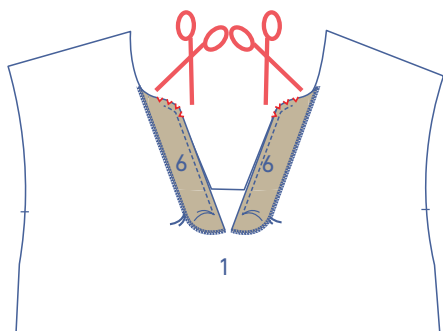
iron-on interfacing

1

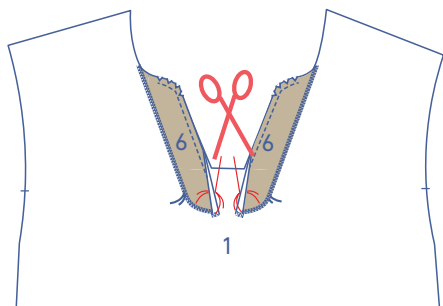
Finish the contours of the facings (6), where indicated, with overlock stitching.



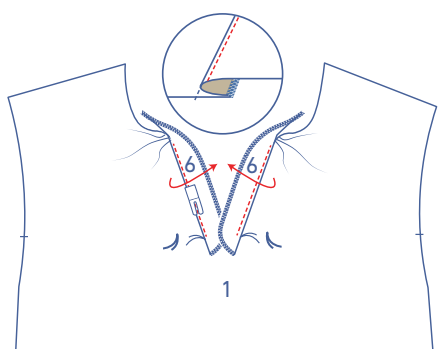
Pin the facings to the front (1), matching the marking threads. Stitch into place at 0.5 cm from the raw edge where indicated, stopping at the marking threads.



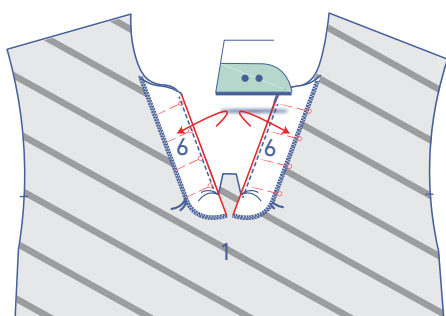
Clip the seams at the curve..



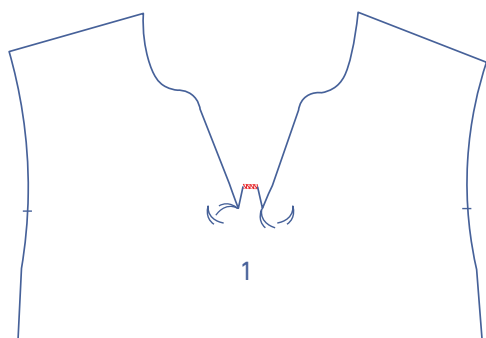
Fold over the facing pieces at the bottom so that you can snip into the seam allowance of the front, stopping just before the marking threads.



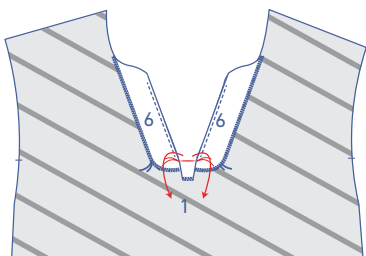
Fold the rest of the facing over and stitch to the seam allowance underneath, right next to the seam.



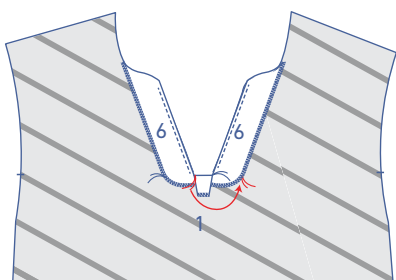
Neatly press the facing pieces towards the wrong side of the front and temporarily pin into place.



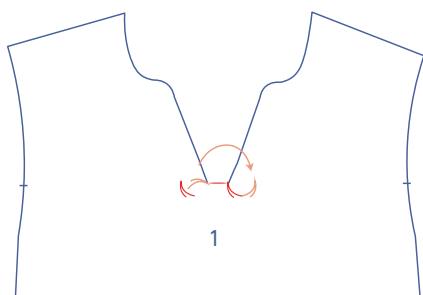
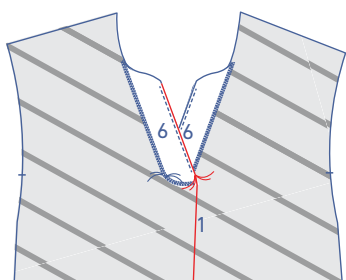
Finish the end of the front, where indicated, with overlock stitching.



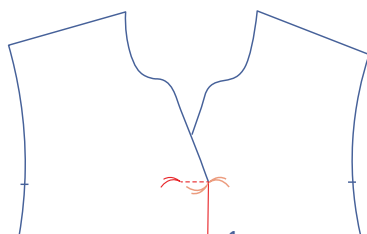
Press the small piece of the F towards the wrong side at the marking threads.



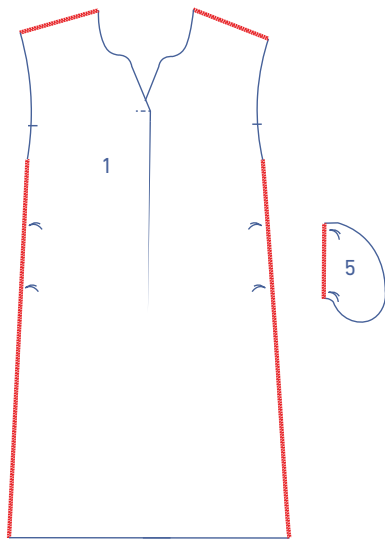
Make the pleat at the F by folding over the front piece and evenly matching all the marking threads. See diagram.



Neatly pin everything flat, down the right side of the garment.

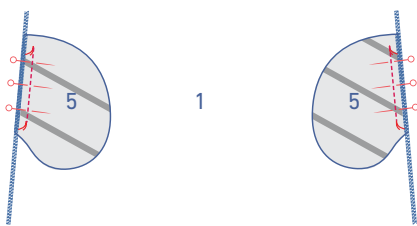


Sew the pleat into place from one marking thread to the other.

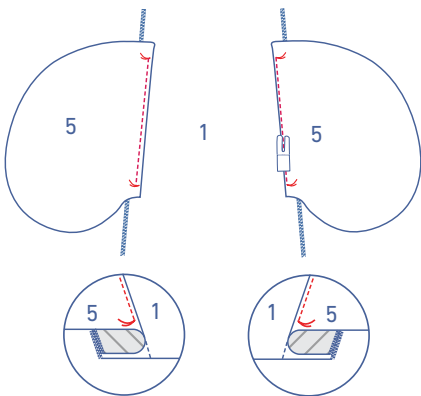


2

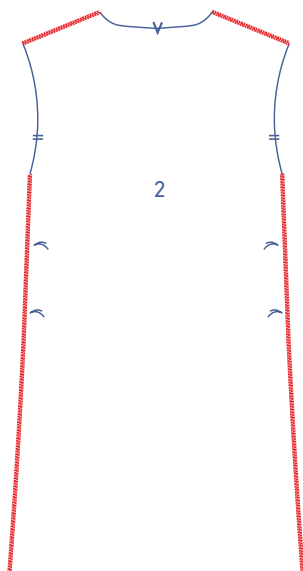
Finish the illustrated ends of the front and pockets (5) with overlock stitching.



Pin the straight ends of 2 of the 4 pocket pieces to the front with marking threads matching. Sew into place between the marking threads.

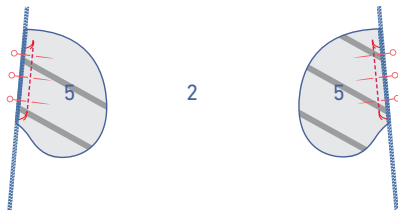


Fold the pocket and seam allowance over and sew the pocket to the seam allowance underneath.

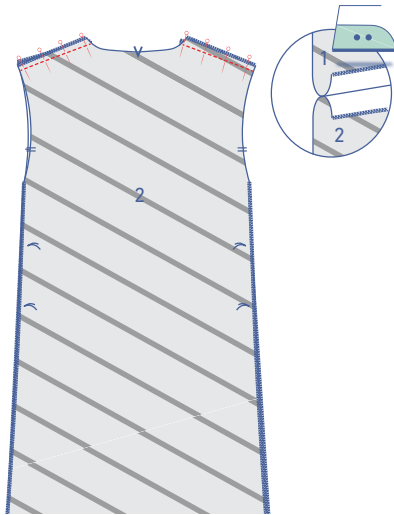


3

Finish the indicated edges of the back with overlock stitching.



Pin the straight ends of the 2 remaining pocket pieces to the back, matching the marking threads. Sew into place between the marking threads.

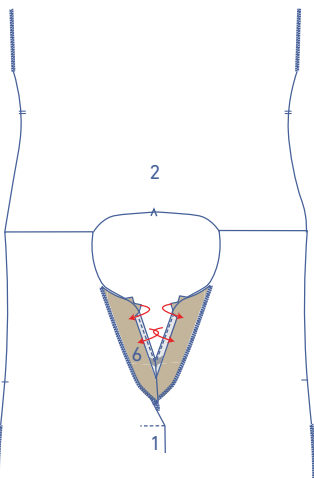


Pin and sew the shoulder seams together and press the seam allowance open.

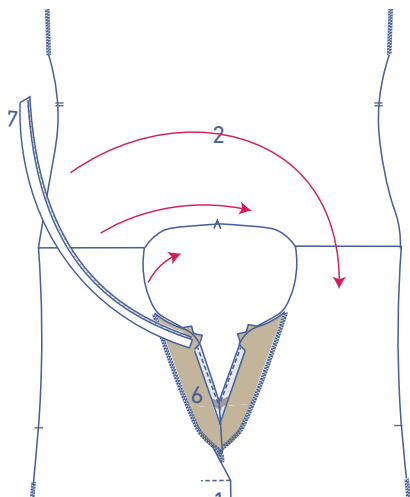
4



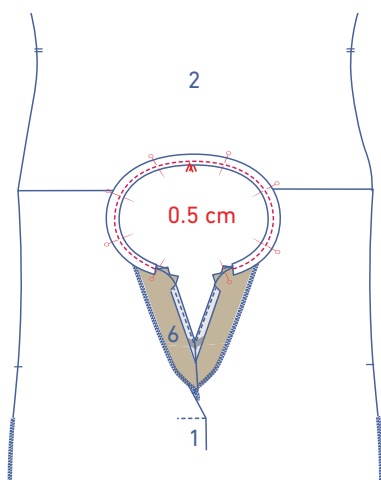
Fold the short ends of the bias tape in half with the wrong sides of the tape facing. Press.



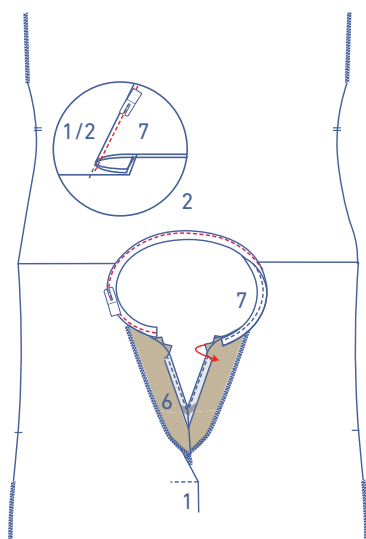
Fold the facing at the CF back towards the right side of the garment.



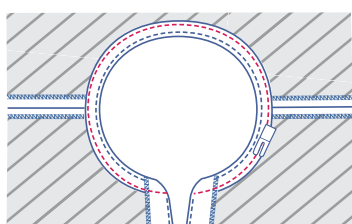
Pin the raw edges of the bias tape to the right side of the neckline. The ends should be on top of the folded facing, slightly away from the CF. If the bias tape seems too long, snip off the end.



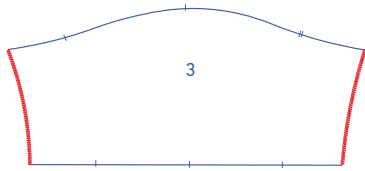
Stitch the bias tape into place at 0.5 cm.



Fold the bias tape and seam allowance over and stitch to the seam allowance underneath, right next to the seam. Sew as far as possible.



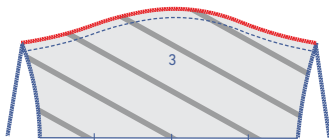
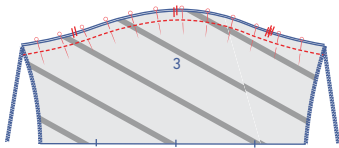
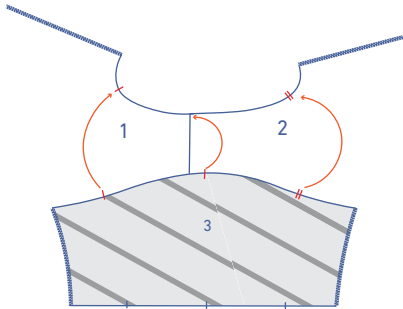
Fold the bias tape and facing all the way over to the wrong side. Stitch the bias tape and facing into place right next to the edge.



5

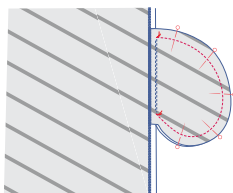
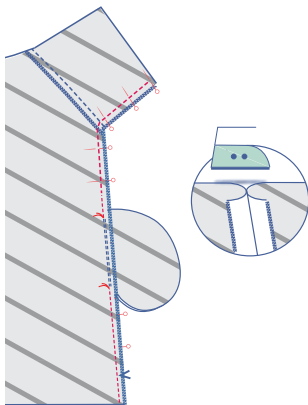
Finish the sides of the sleeve (3) with overlock stitching.

Pin and sew the top of the sleeve (= the sleeve cap) to the armhole, matching the markings. The single notch marks the front, while the double notch marks the back. The top notch should line up with the shoulder seam.



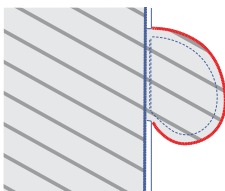
Finish the raw edges together with overlock stitching.

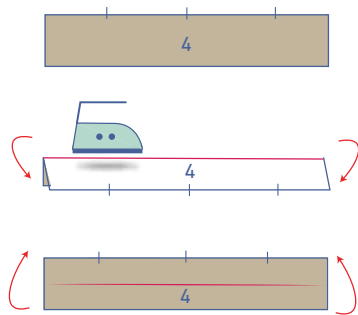
Fold the sleeve in half with the right sides of the fabric touching. Stitch the side and underarm seams together up to the marking thread that marks the top of the pocket opening. Now, stitch from the next marking thread down to the hem. Press the seam allowance open.



Pin and sew the contours of the pocket pieces together.

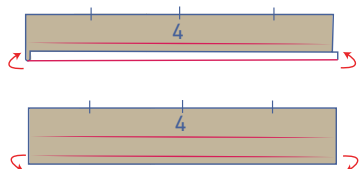
Finish the raw edges with overlock stitching.



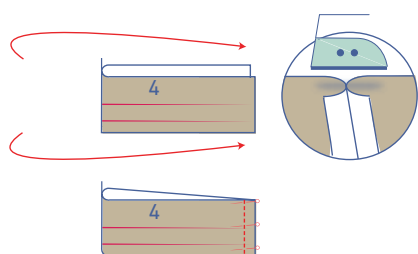


6

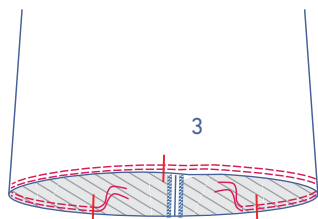
Fold the short ends of the cuff (4) in half with the wrong sides of the fabric facing. Press to create a fold line. Open back out.



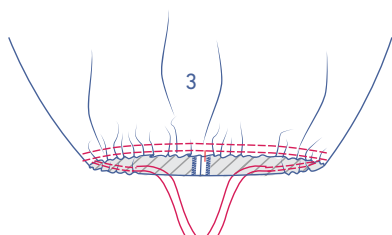
Press 1 cm of the long edge (with no notches) towards the wrong side to create a fold line. Open back out again.



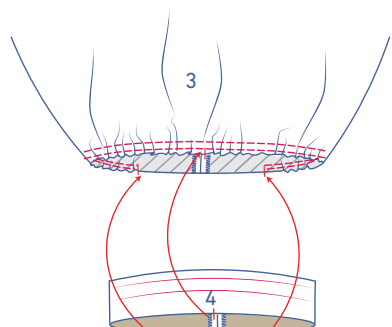
Fold the long edges of the cuff in half with the right sides of the fabric facing. Pin and sew the end closed. Press the seam allowance open.



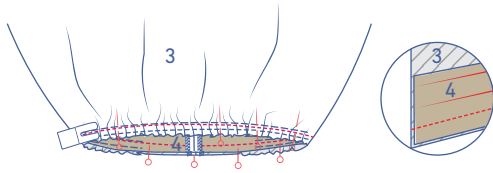
Sew two parallel rows of stitching to the bottom of the sleeve between the highlighted notches, using a long stitch length at a low thread tension. Leave a length of thread at the start and end of the rows.



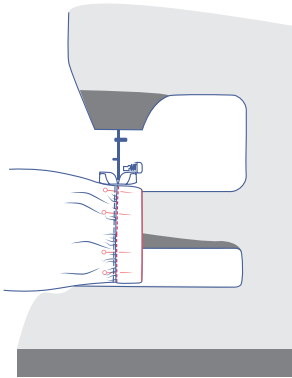
Carefully tug the ends of the threads to gather in the fabric.



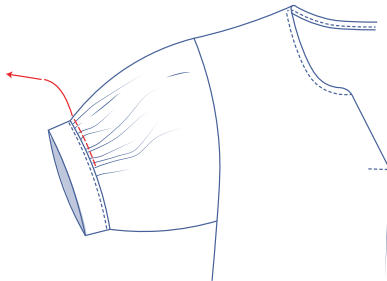
Distribute the gathers until the notches in the bottom of the sleeve match the cuff notches.



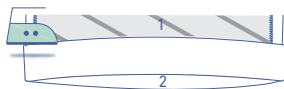
Slide the sleeve over the cuff and pin the unpressed raw edge of the cuff to the bottom of the sleeve along the inside (= the wrong side), matching notches. Stitch into place.



Open the cuff out so that it's on the right side of the sleeve. Tuck the raw edge under. Place the fold line directly over the stitching. Edge stitch into place.

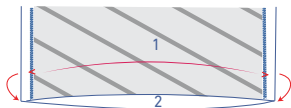


Remove the gathering threads.

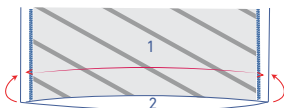


7

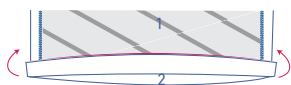
Press the hem allowance up at the V notches.



Open back out.



Fold the raw edge up to the pressed fold line. Fold over again.



Sew the hem allowance into place.

