

Joy by Fibre ⚡ood

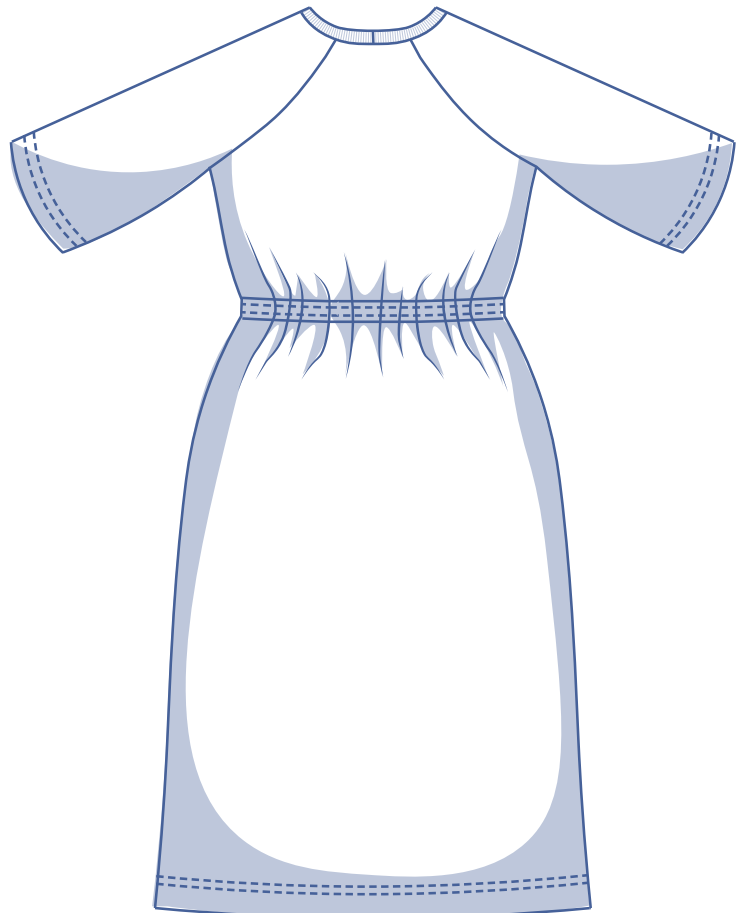
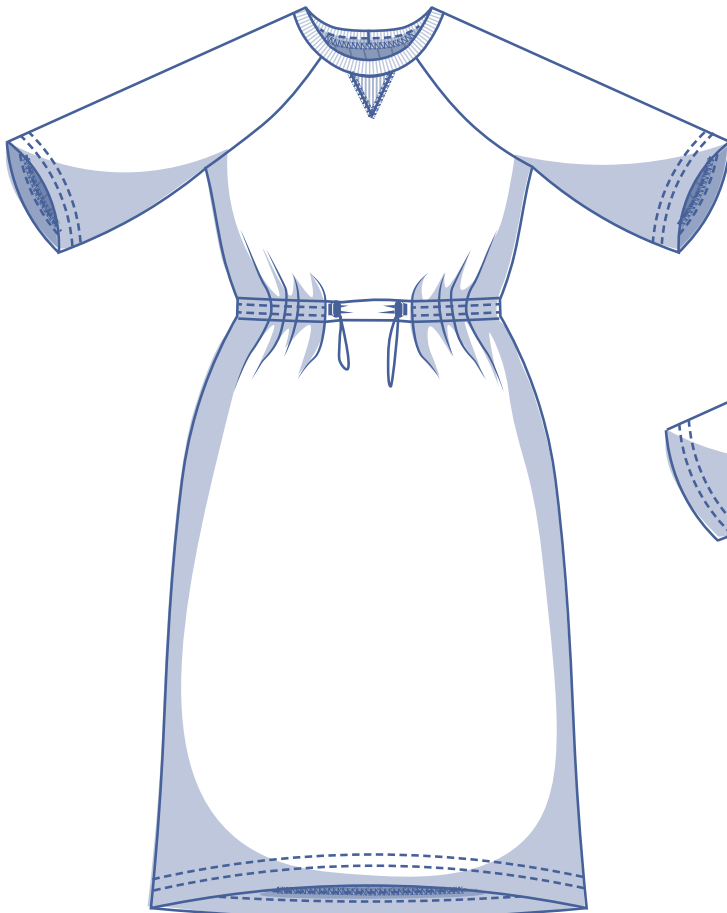


# Joy by Fibre Mood



**XS - XXXL**

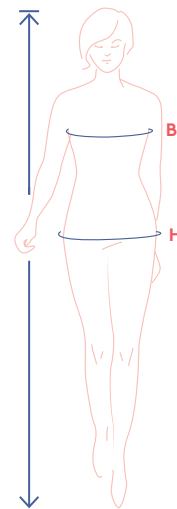
Casual, comfy, and yet still classy – the Joy T-shirt dress has got us jumping for... joy! It has a clean look with a handful of choice details, such as the crew neck with neck binding in trim fabric, a cord and cord stopper at the waistline, and wide raglan sleeves that you can alter to be more fitted, if you prefer.



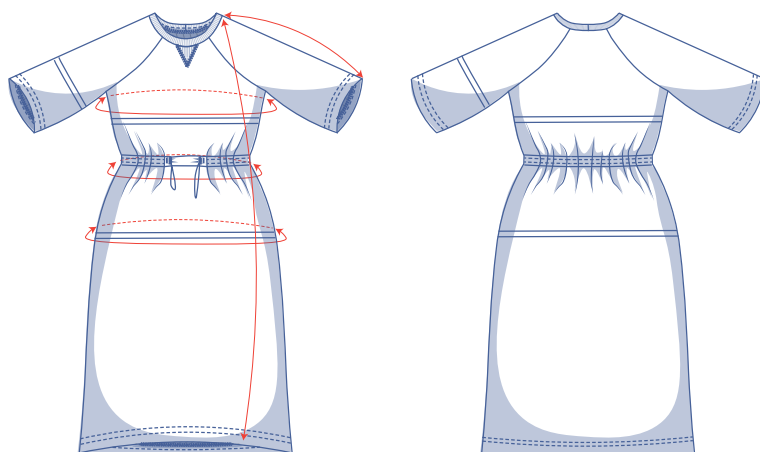
## size chart (in cm)

size	XS		S		M		L		XL		XXL		XXXL		
	4	6	8	10	12	14	16	18	20	22	24	26	28	30	32
body height	160	164	166	167	168	169	170	171	172	172	172	172	172	172	172
B (bust)	76	80	84	88	92	96	100	104	110	116	122	128	134	140	146
H (hips)	86	90	94	97	100	103	106	109	115	120	125	130	135	140	145

Choose your size based on your **bust measurement**. If your hip measurements are wider than those in the size chart, check the hip measurements in the chart below to see if there's enough room or whether the pattern needs to be altered. It's easy to do. When tracing the pattern, simply trace from the line of one size to the line of the other size.



## pattern measurements (in cm)



This chart's measurements are the pattern measurements based on the fabric type and serve as a reference. Ease has been added to the width measurements (in addition to the exact body measurements) for a more comfortable fit. Joy is designed to have a **loose cut**. Depending on the preferred cut, you could decide to go a size smaller or larger than the recommended size.

== shorten or lengthen the pattern here

size	XS	S	M	L	XL	XXL	XXXL
length	120.5	121.75	122.75	123.75	126	127.5	129
sleeve length*	43.25	44.5	45.75	46.5	47.5	49	51.25
bust	90.75	98.75	106.75	114.75	126.75	138.75	156.75
waistline without elastic	81.25	87.25	95.25	101.25	114.25	127.25	146.75
hips	94.25	101.25	107.25	113.25	124.25	134.25	149.25

\* Including shoulder length.

Compare the stated lengths to the measured or desired lengths. **Lengthen** or **shorten** the dress and/or the sleeves by cutting the pattern pieces at the indicated double lines. Then either increase the distance between the cut pieces by the desired amount (to lengthen) or overlap the pieces (to shorten). Make sure that the CF and CB lines and the side seams are always straight.



### IMPORTANT

Adjust the amount of fabric to be used based on these alterations.

## notions



- Thread
- Scrap of iron-on interfacing
- Trim fabric (35 cm wide): max. 10 cm
- Cord stoppers: 2
- (Elastic) Cord (Ø 0.25 cm): see table
- Fabric: see table

cord		XS	S	M	L	XL	XXL	XXXL
length	cm	175	187	203	215	241	267	306

fabric		XS	S	M	L	XL	XXL	XXXL
fabric width 110 cm	cm	190	195	325	330	360	375	390
fabric width 140 cm	cm	190	195	195	200	230	335	345

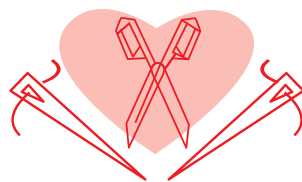
The corresponding fabric layout can be found on page 6 of these sewing instructions.

## fabric advice



Make Joy in a cosy knit, such as French terry, interlock, sweatshirt fabric, etc. The neck band should be made in (ribbed) trim fabric to make the dress easy to pull on over your head.

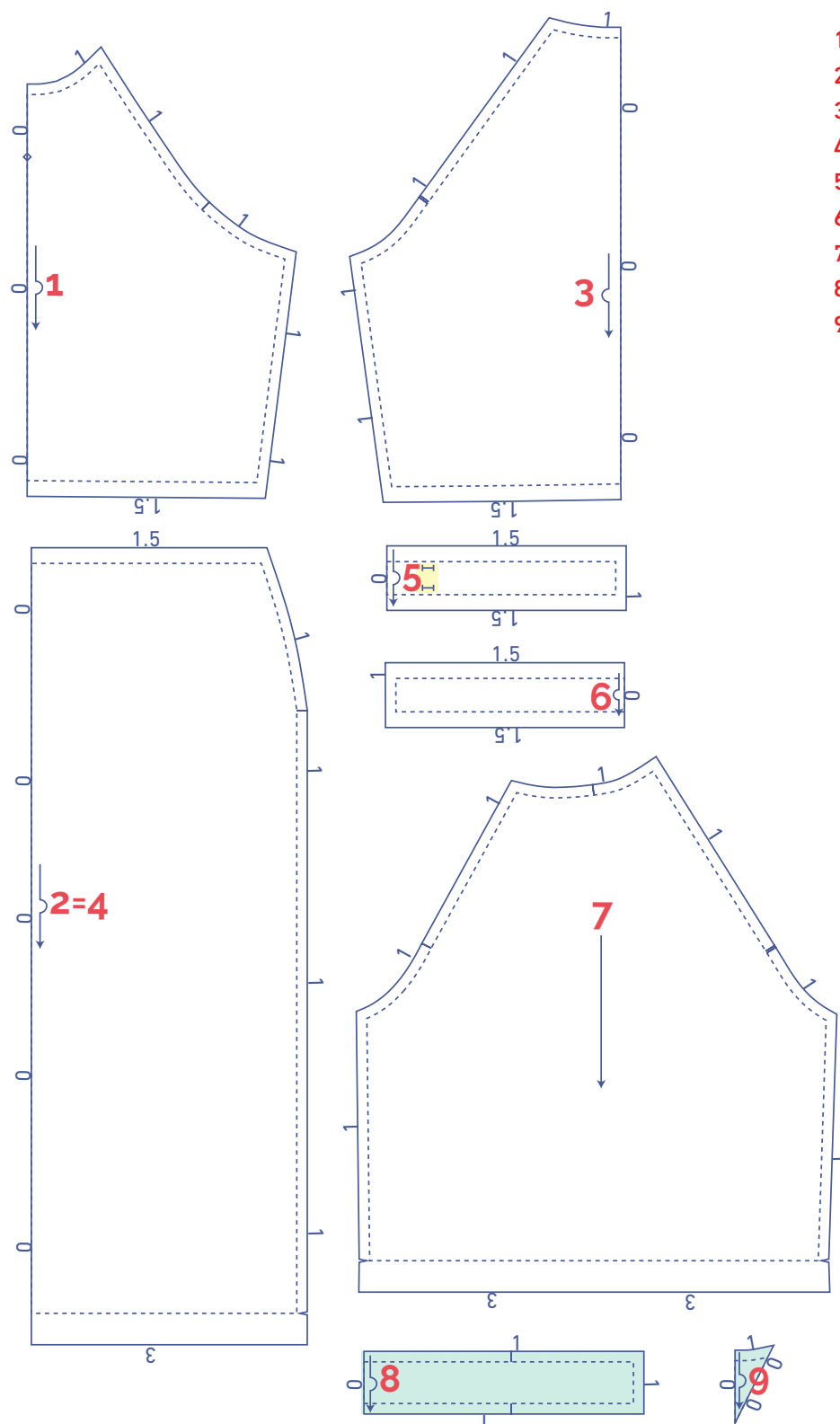
# Proud to be #Sewista







## pattern pieces & seam allowances (in cm)

To sew the garment as described in the instructions, draw the illustrated seam allowances around the paper pattern pieces before cutting them out. If you are using a PDF pattern, the pattern can be printed with or without seam allowance.

To find out more, watch the [video](#).



1. front: 1x on fabric fold
2. skirt F: 1x on fabric fold
3. back: 1x on fabric fold
4. skirt B: 1x on fabric fold
5. waistband F: 1x on fabric fold
6. waistband B: 1x on fabric fold
7. sleeve: 2x
8. neck band: 1x on fabric fold
9. F insert: 1x on fabric fold (optional)

 material type	
	fabric
	iron-on interfacing
	trim fabric

### IMPORTANT

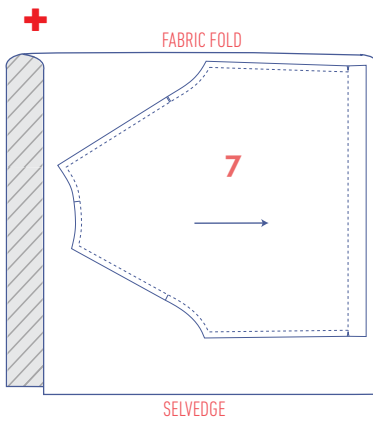
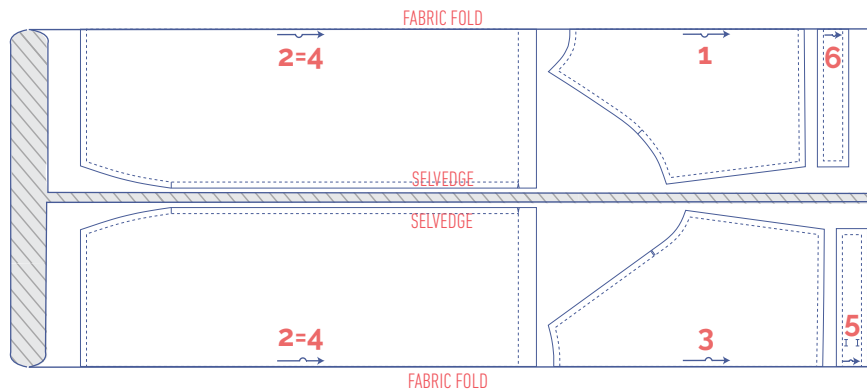
Pattern pieces 2 and 4 are the same.

### IMPORTANT

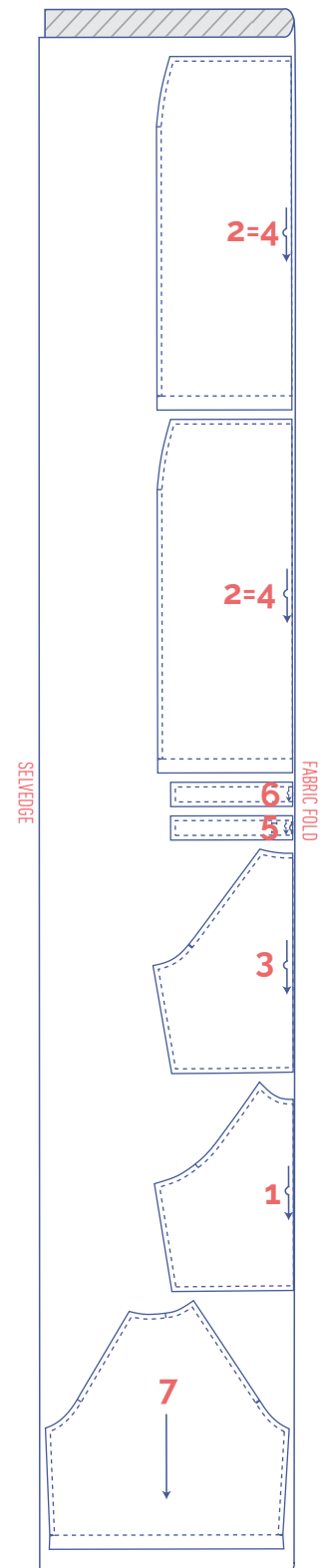
The pieces highlighted in light yellow have iron-on interfacing attached to the wrong side.

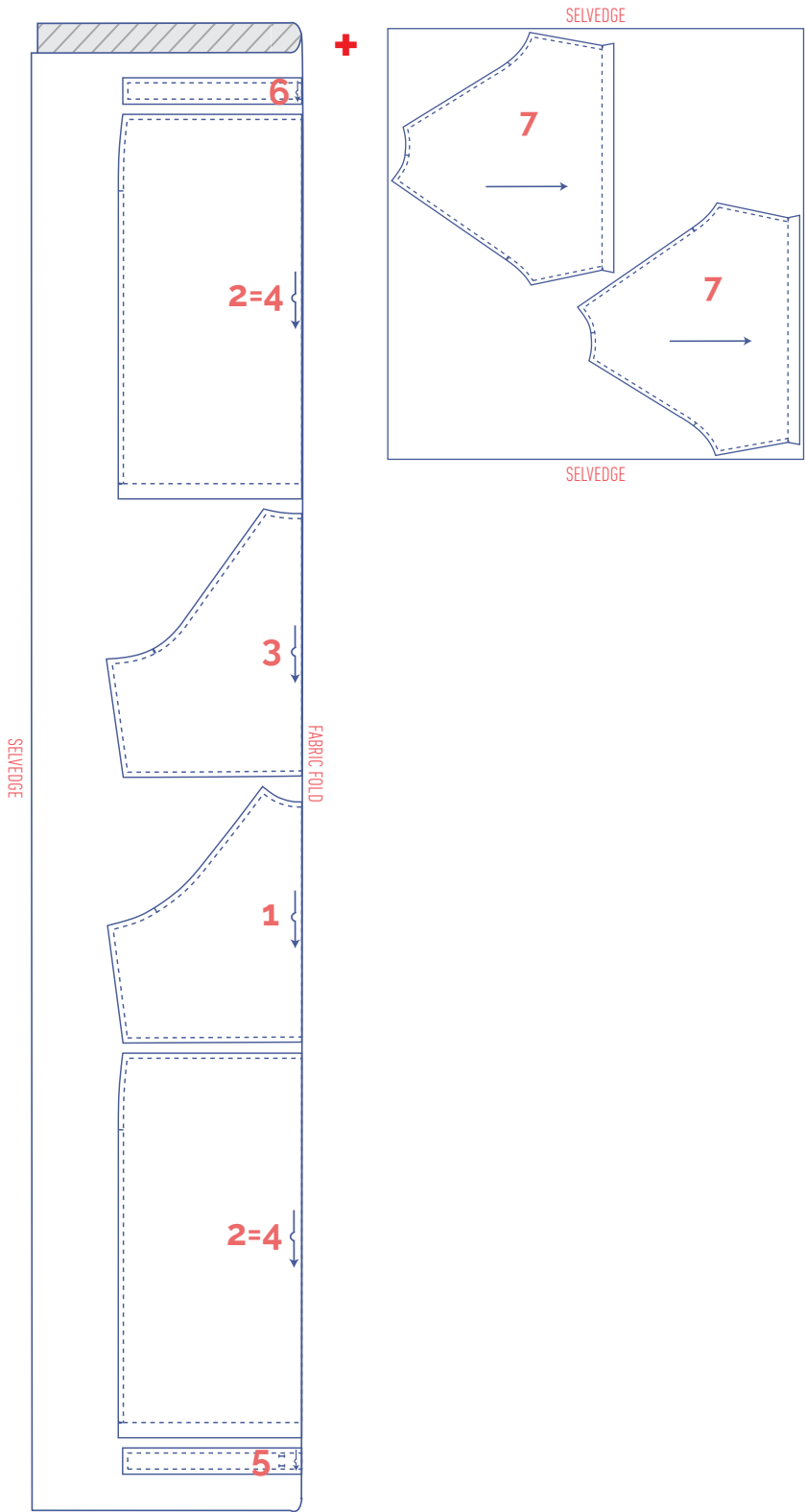
**fabric layout – solid fabrics**  
**fabric width 110 cm**

**XS - S**



**M - L**

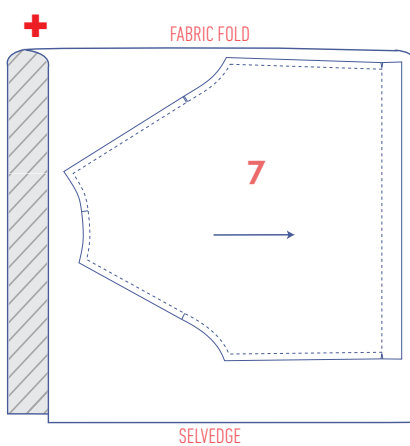
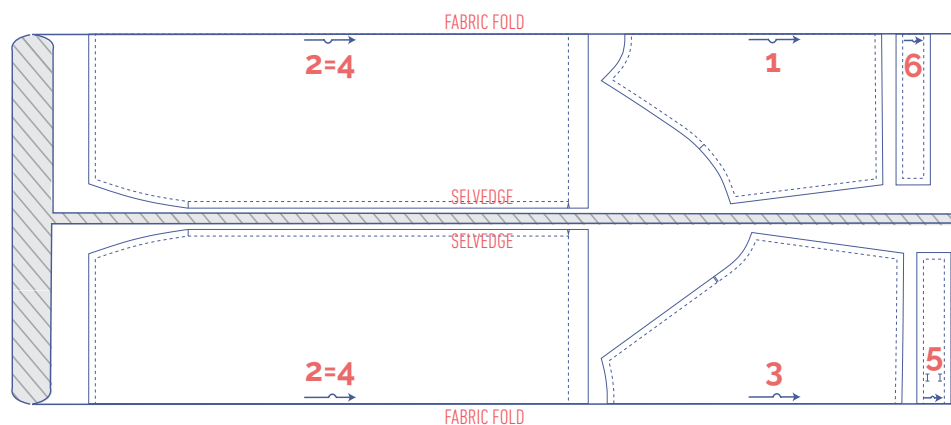




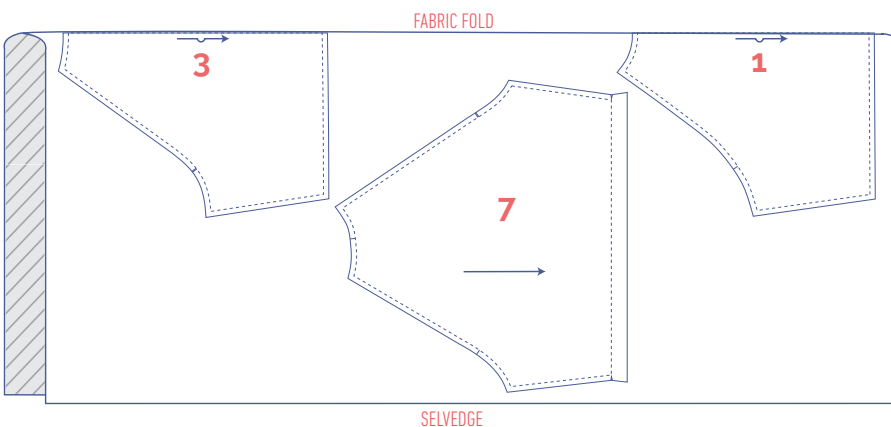
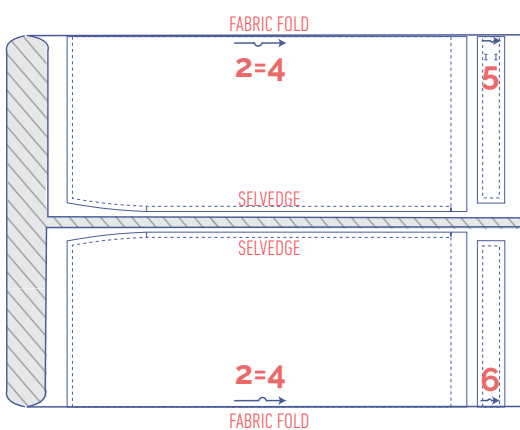
# fabric layout – solid fabrics

fabric width 140 cm

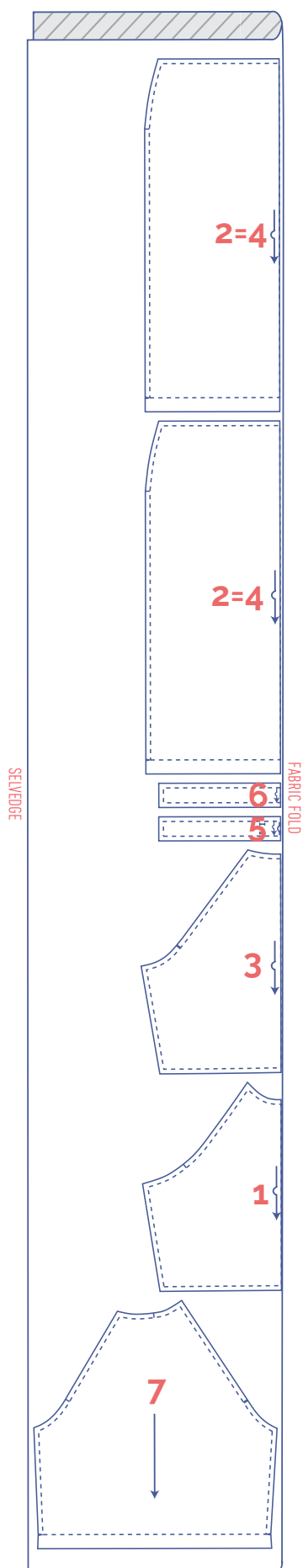
XS - L



XL







## marking pattern pieces



Notch the pattern paper and fabric at the following points



single notch



double notch



V notch



Mark the following points using marking thread



centre point



buttonhole

# sewing instructions



The sewing instructions explain how to make the dress if you don't have an overlock machine. Use a stretch stitch setting on your sewing machine to sew the seams and an overlock stitch to finish the raw edges. The dress can also be made solely with a 4-thread overlocker, i.e. 2 upper looper threads and 2 lower looper threads. This finishes the raw edges and sew the seams together at the same time. The seams will stay stretchy.

F front

B back

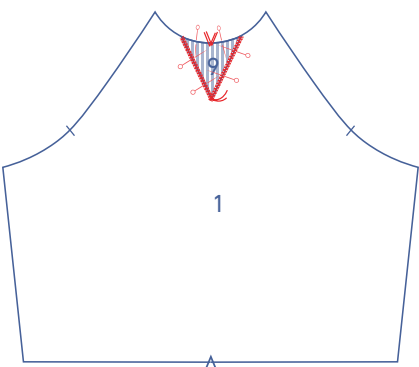
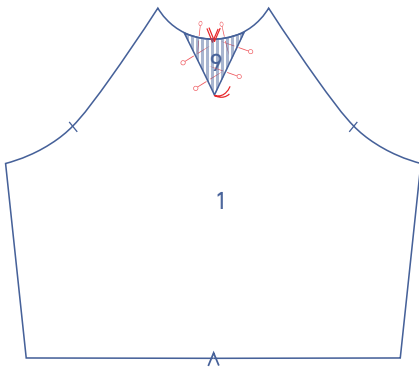
CF centre front

CB centre back

 right side

 wrong side

 trim fabric

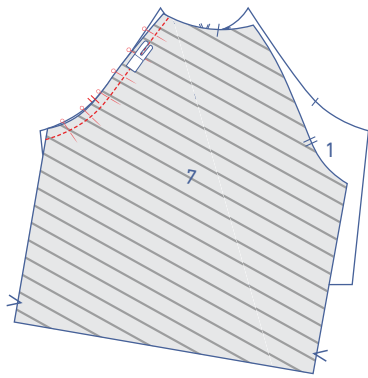


## 1

### OPTIONAL

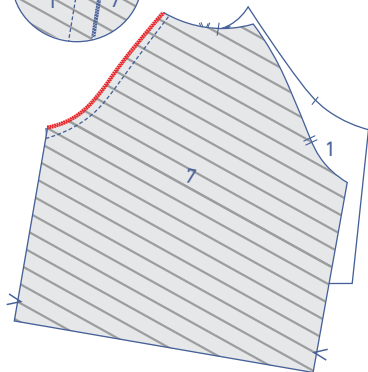
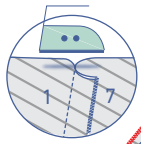
Pin the F insert (9) to the F (1) with the right side facing up and the markings matching. The tip of the triangle should match the marking thread.

Stitch to the raw edges with a short, medium width zigzag stitch.

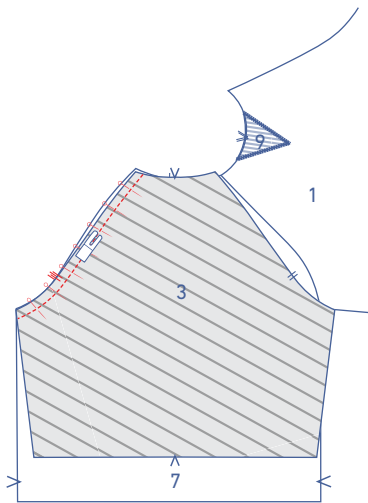


## 2

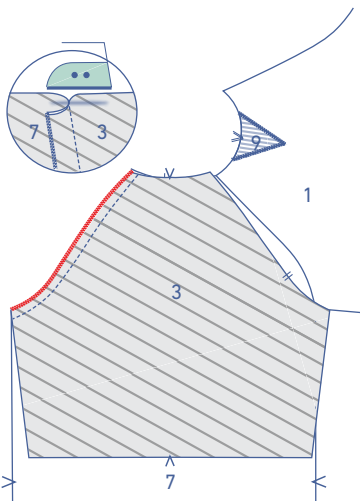
Pin and sew the side of the sleeve (7) with a single notch to the F, matching the notches.



Finish the raw edges with overlock stitching and press the seam allowance towards the sleeve.

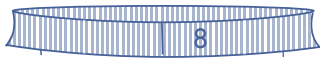
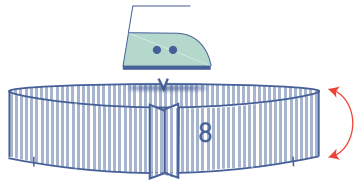
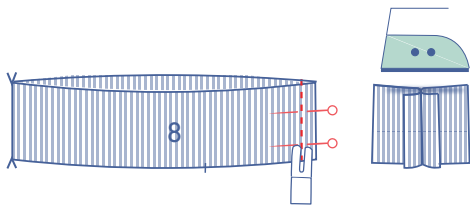


Pin and stitch the side of the sleeve (7) end with the double notches to the B (3), matching the notches.



Finish the raw edges with overlock stitching and press the seam allowance towards the sleeve.

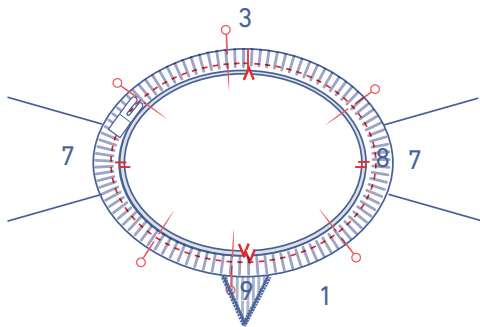
Repeat the above steps to join the other sleeve to the body.



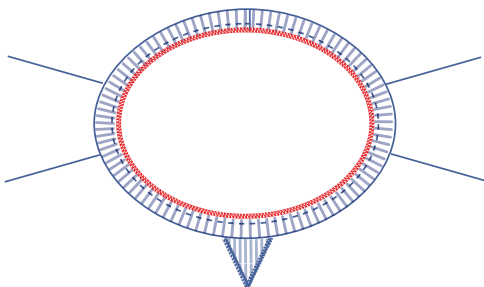
### 3

Fold the neck band (8) in half crosswise with the right sides of the fabric facing. Pin and sew the short end (CB seam) closed. Press the seam allowance open.

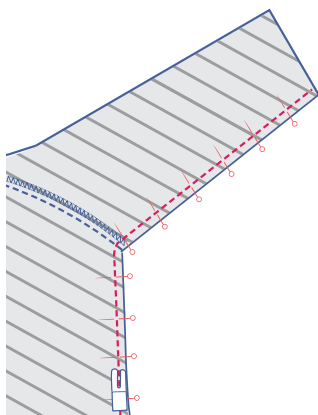
Press the neck band in half lengthwise with the wrong sides of the fabric facing.



Pin and sew the raw edges of the neck band to the neckline. The neck band's CB seam should match the V notch in the back, and the notches in the neck band should align with the sleeve notches marking the shoulder. The V notch in the neckband aligns with the V notch in the CF. The circumference of the neck band is smaller than the neckline so make sure to pin at all the notch points and stretch out the band as you sew.

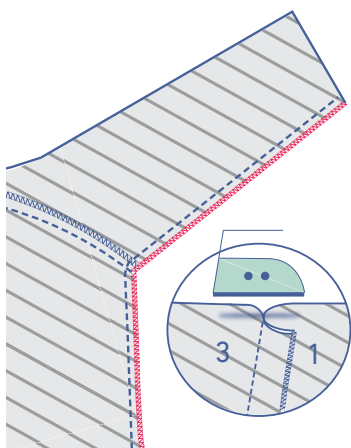


Finish the raw edges with overlock stitching.



### 4

Pin and sew the side and underarm seams.



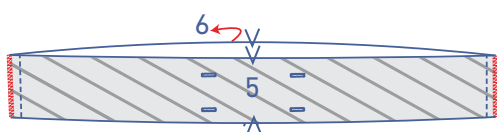
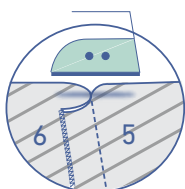
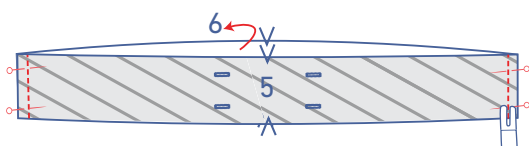
Finish the raw edges together with overlock stitching and press the seam allowance towards the F.

## 5

Make horizontal buttonholes in the waistband F (5) where indicated.

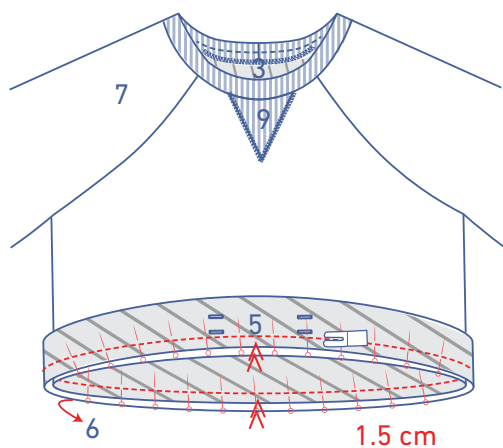


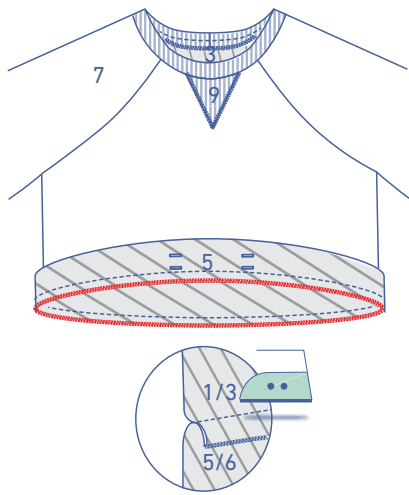
Pin and stitch the side seams of the F (5) and B (6) waistbands together.



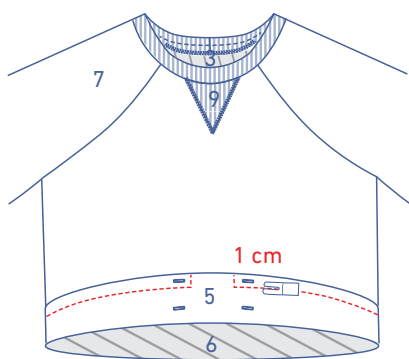
Finish the raw edges together with overlock stitching and press the seam allowance towards the waistband B.

Slide the waistband over the top piece, right sides together. Sew into place at 1.5 cm from the raw edge.

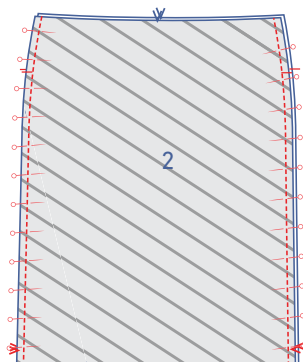




Finish the raw edges with overlock stitching. Press the seam allowance towards the waistband.

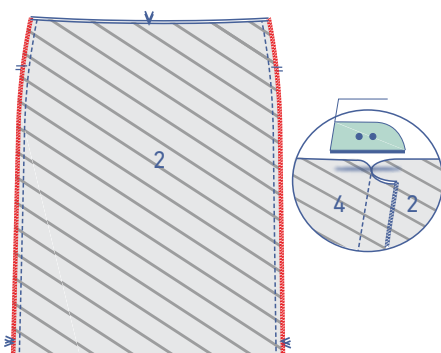


Fold the waistband back down. Stitch the seam allowance to the waistband at 1 cm (refer to diagram) from the lapped seam to create a casing that is 1 cm wide.

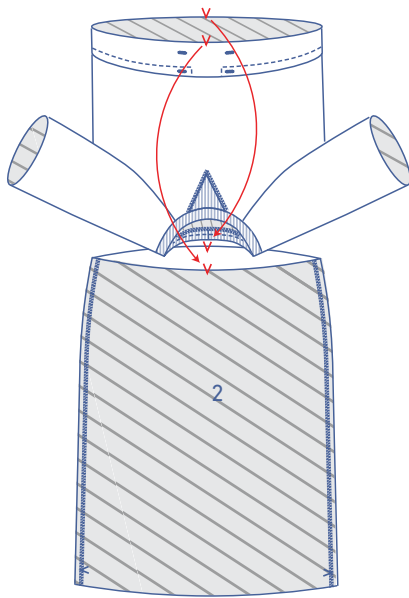


## 6

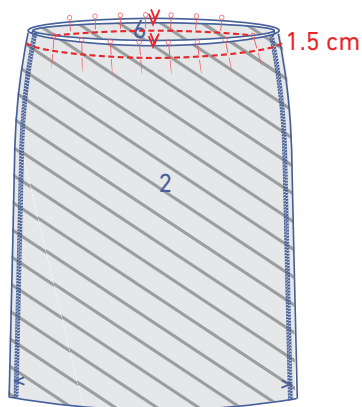
Pin and stitch the side seams of the F (2) and B (4) skirt pieces.



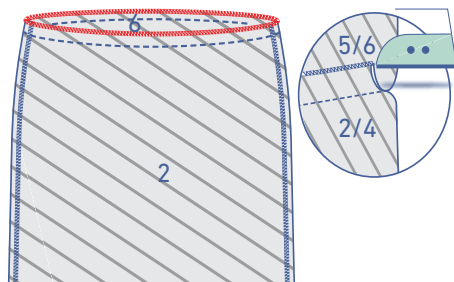
Finish the raw edges together with overlock stitching and press the seam allowance towards the skirt piece F.



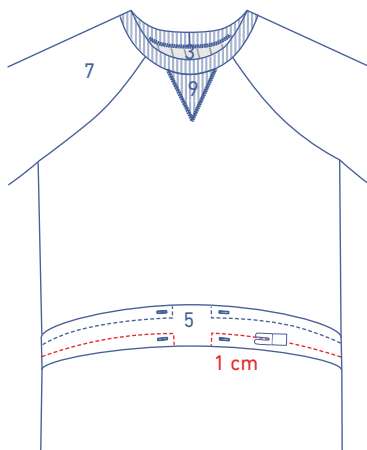
Slide the top into the skirt, right sides together, and after making sure all the raw edges are aligned, pin the waistband to the top of the skirt.



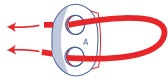
Sew into place at 1.5 cm from the raw edge, making sure the side seams and notches match.



Finish the raw edges with overlock stitching. Press the seam allowance towards the waistband.

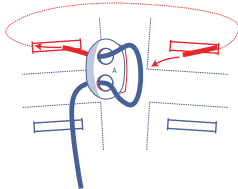


Stitch the seam allowance to the waistband at 1 cm from the lapped seam (refer to diagram) to create a casing that is 1 cm wide.

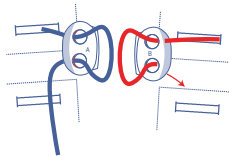


**7**

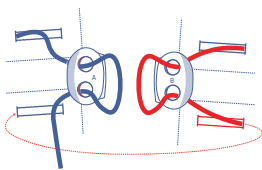
Draw both ends of the cord through the holes in one of the cord stoppers.



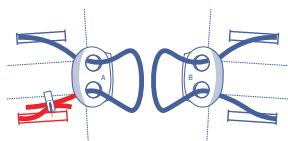
Thread one end of the cord through the top casing through the illustrated top buttonhole.



At the illustrated top buttonhole draw the cord through both holes in the second cord stopper.

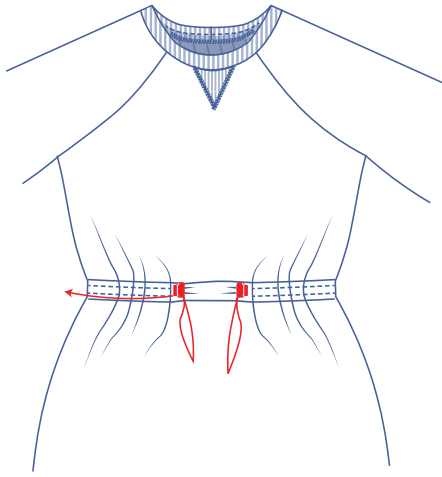


Now thread it through the bottom casing through the bottom buttonhole illustrated.

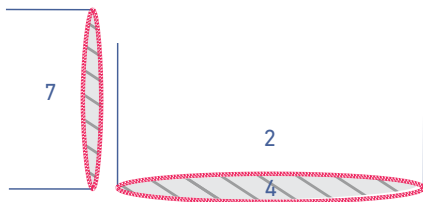


Stitch to join the ends at the illustrated bottom buttonhole.



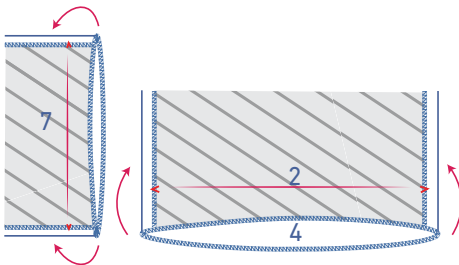


Pull the cord in the casing so that the seam is no longer visible.

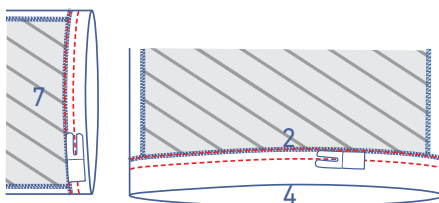


**8**

Finish the hems of the skirt and sleeves with overlock stitching.



Press the hem allowance towards the wrong side.



Stitch into place with two lines of topstitching.