

Grace by Fibre ⚡ood



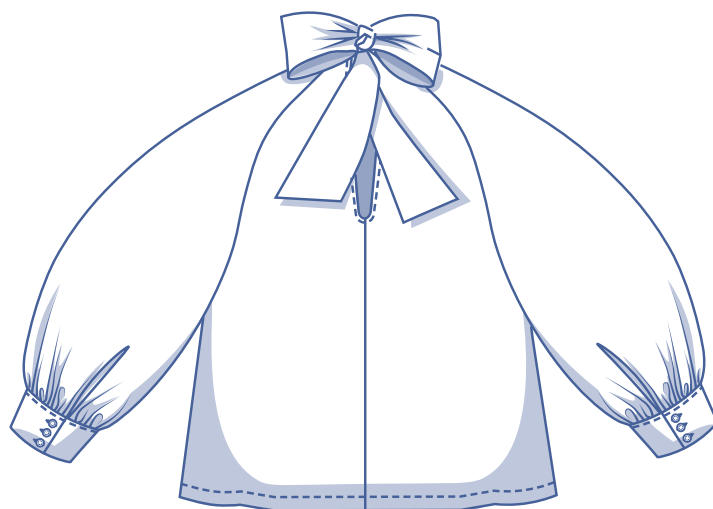
Grace by Fibre Mood

***✦✦



XS - XXXL

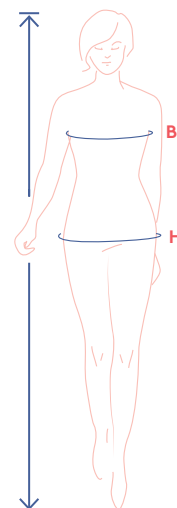
Looking for a graceful addition to your wardrobe? Meet Grace, a blouse with a charming cut that features a standing collar with a bow at the back and raglan balloon sleeves with a fitted cuff. On the front, you'll find lovely pleats that extend the full length of the garment.



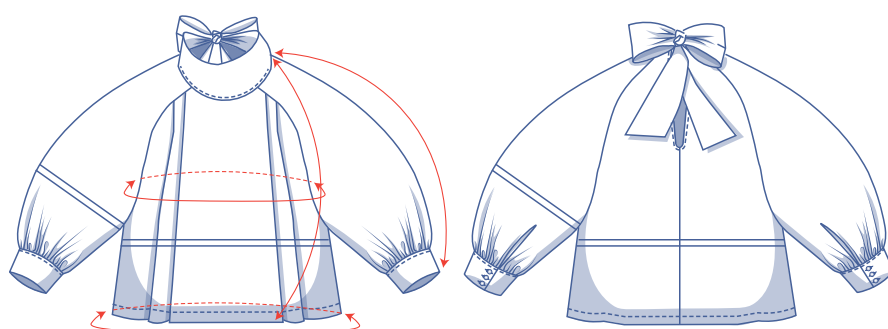
size chart (in cm)

size	XS		S		M		L		XL		XXL		XXXL		
	4	6	8	10	12	14	16	18	20	22	24	26	28	30	32
body height	160	164	166	167	168	169	170	171	172	172	172	172	172	172	172
B (bust)	76	80	84	88	92	96	100	104	110	116	122	128	134	140	146
H (hips)	86	90	94	97	100	103	106	109	115	120	125	130	135	140	145

Choose your size based on your **bust measurement**. If your hip measurements are wider than those in the size chart, check the hem circumference in the chart below to see if there's enough room or whether the pattern needs to be altered. It's easy to do. Simply trace the line of the one size instead of the other.



pattern measurements (in cm)



— shorten or lengthen the pattern here

This chart's measurements are the pattern measurements based on the fabric type and serve as a reference. Ease has been added to the width measurements (in addition to the exact body measurements) for a more comfortable fit. Grace is designed to have a more **loose** cut. Depending on the preferred cut, you could decide to go a size smaller or larger than the recommended size.

size	XS	S	M	L	XL	XXL	XXXL
length	60	62	63,75	65,5	67,75	69,75	72
sleeve length*	68	69.25	70.5	71.75	73	74.5	76
bust	82.5	90.5	98.5	106.5	116.5	128.5	140.5
hem circumference	108.25	116.25	124.25	132.25	142.25	154.25	166.25

* Including the shoulder length and cuff.

Compare the stated lengths to the measured or desired lengths. **Lengthen** or **shorten** the top and/or the sleeves by cutting the pattern pieces at the indicated double lines. Then either increase the distance between the cut pieces by the desired amount (to lengthen) or overlap the pieces (to shorten). Make sure that the CF and CB lines and the side seams are always straight.



IMPORTANT

Adjust the amount of fabric to be used based on these alterations.

notions



- Thread
- Iron-on interfacing: max. 40 cm
- Buttons (Ø 1.1 cm): 6
- Fabric: see table

fabric		XS	S	M	L	XL	XXL	XXXL
fabric width 110 cm	cm	270	275	280	305	310	320	330
fabric width 140 cm	cm	200	210	235	265	280	290	295

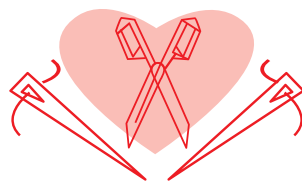
The corresponding fabric layout can be found on page 6 of these sewing instructions.

fabric advice



Grace looks extra graceful in fabric with a fluid drape such as muslin, viscose crêpe, satin, or Tencel. Want to make a true statement top? Select a structured fabric, e.g. poplin, for a look sure to turn heads. For a lovely sense of balance, choose eyelet lace. It adds volume while creating an inherently soft undertone.

Proud to be #Sewista



pattern pieces & seam allowances (in cm)

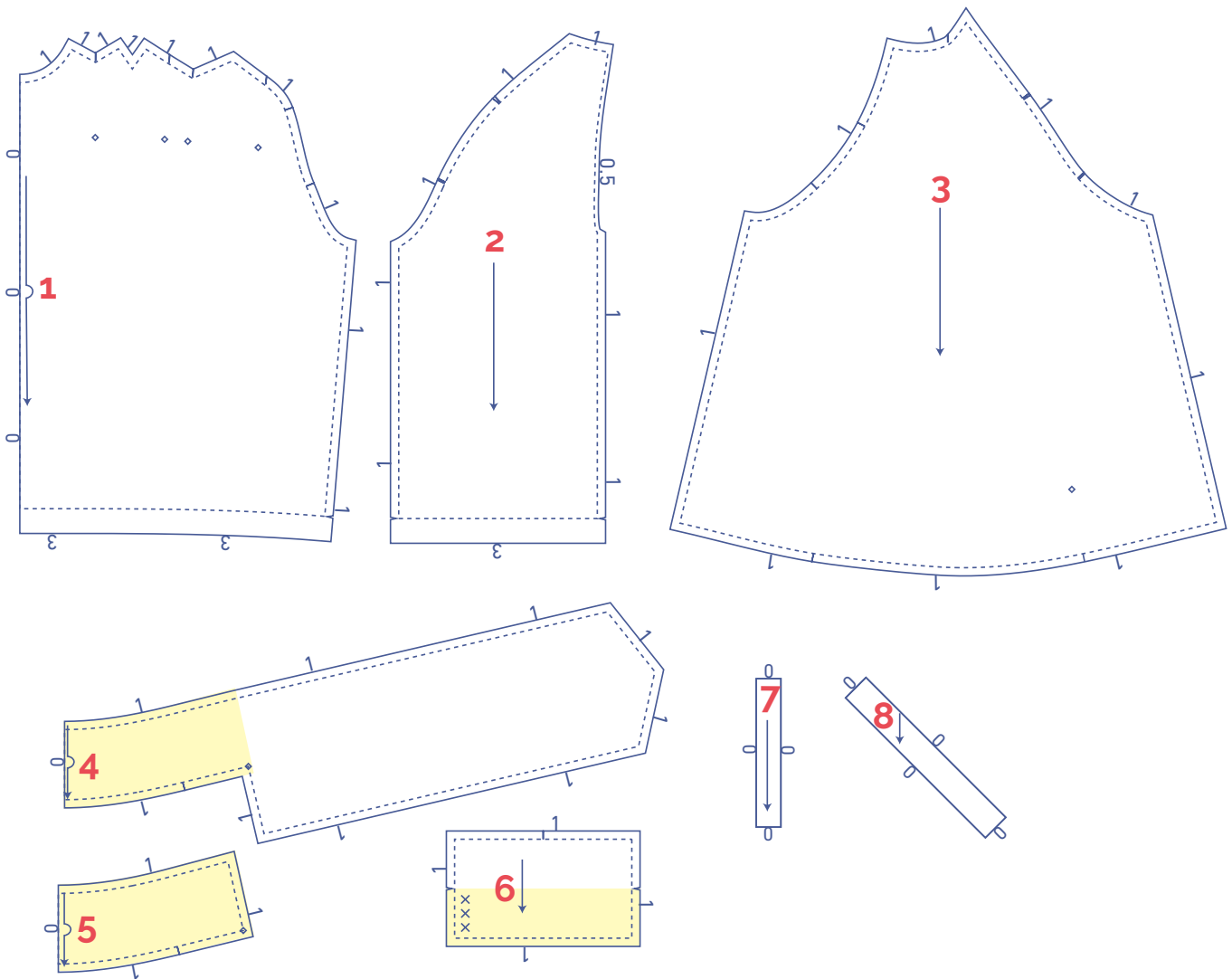
To sew the garment as described in the instructions, draw the illustrated seam allowances around the paper pattern pieces before cutting them out. If you are using a PDF pattern, the pattern can be printed with or without seam allowance.




To find out more, watch the [video](#).

1. front: 1x on fabric fold
2. back: 2x
3. sleeve: 2x
4. collar + tie: 1x on fabric fold
5. collar facing: 1x on fabric fold
6. cuff: 2x
7. sleeve binding: 2x
8. bias tape back: 2x

IMPORTANT

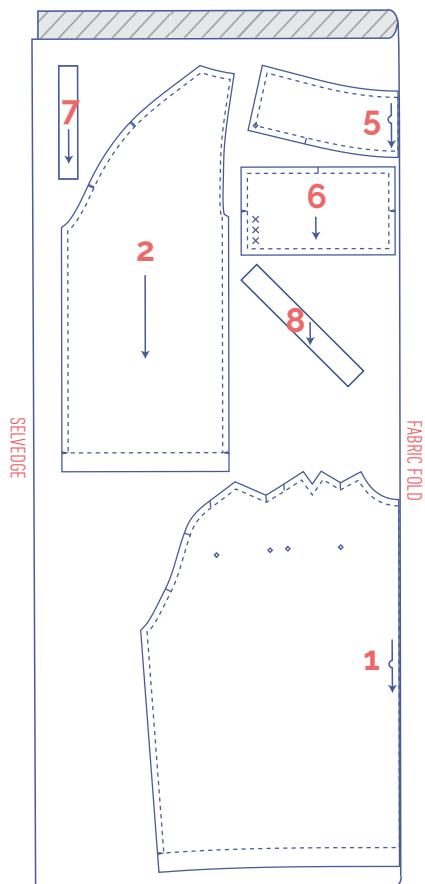
The pieces highlighted in light yellow have iron-on interfacing attached to the wrong side.



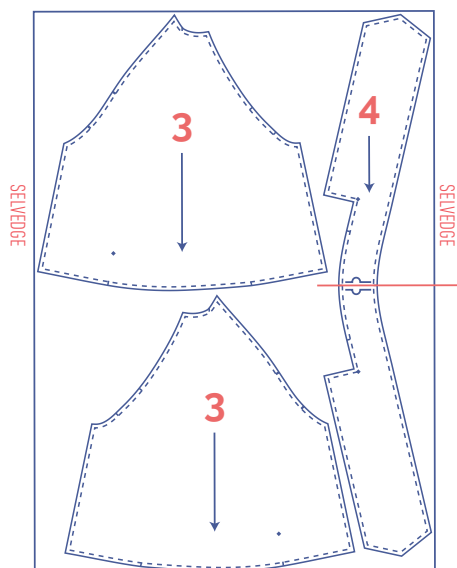
 material type
 fabric
 iron-on interfacing

fabric layout – solid fabrics
fabric width 110 cm

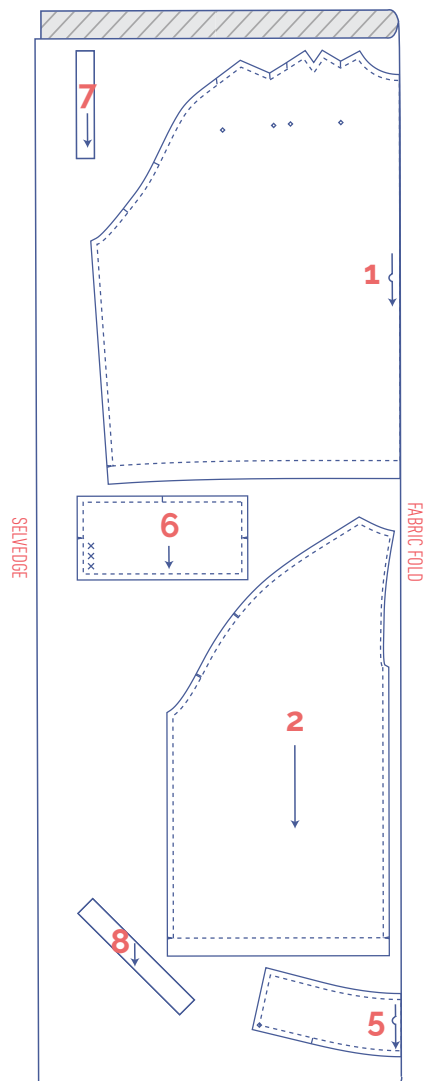
XS - M



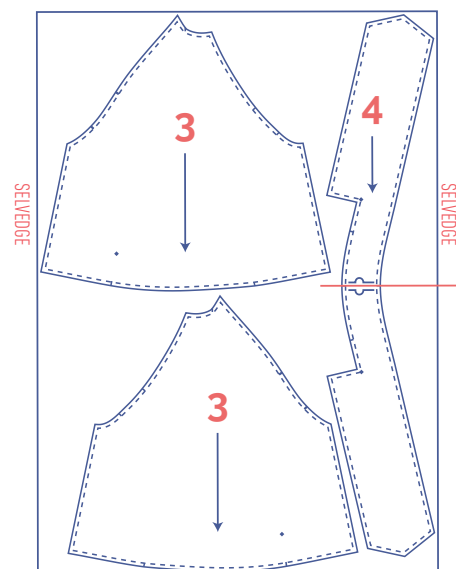
+



L - XXXL



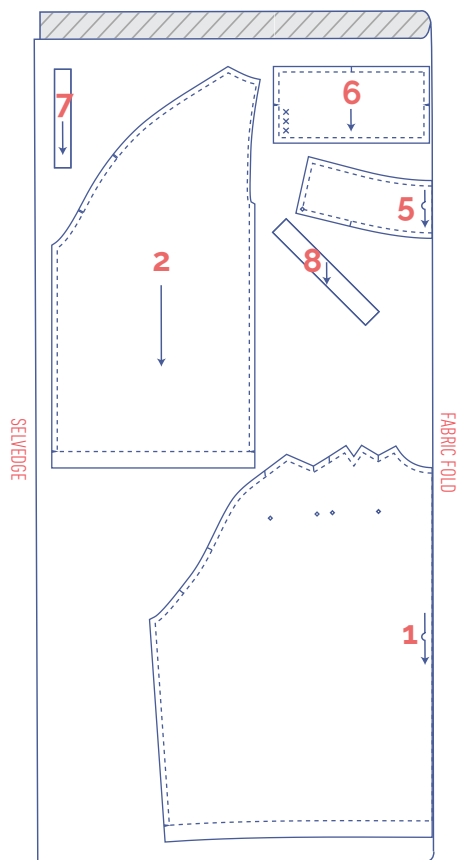
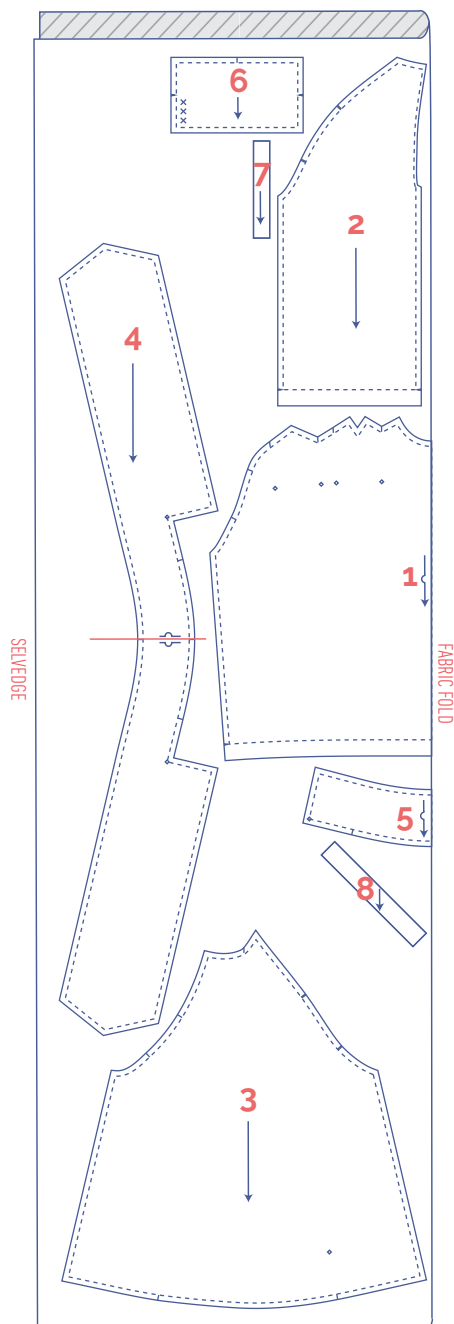
+



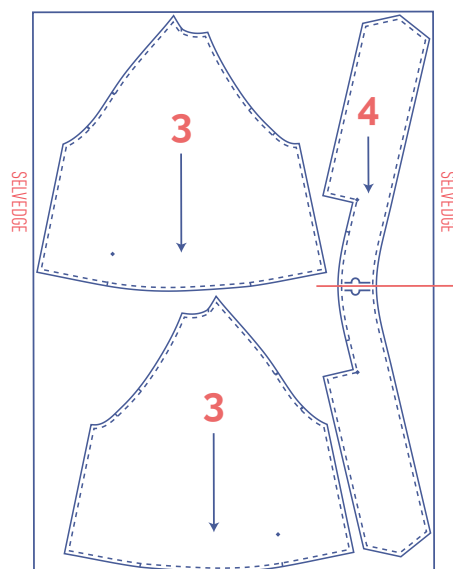
fabric layout – solid fabrics fabric width 140 cm

XS - M

L - XXXL



+



marking pattern pieces



Notch the pattern paper and fabric at the following points



single notch



double notch



V notch



Mark the following points using marking thread



centre point



button

sewing instructions



The method used to finish the seams depends on the fabric used.
The pieces are always sewn together with the right sides of the fabric facing, unless stated otherwise.

F front

B back

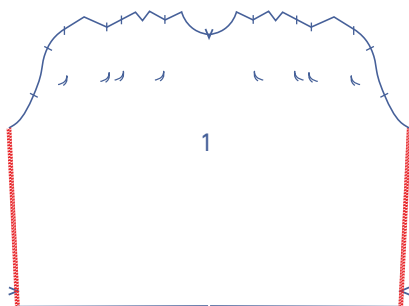
CF centre front

CB centre back

 right side

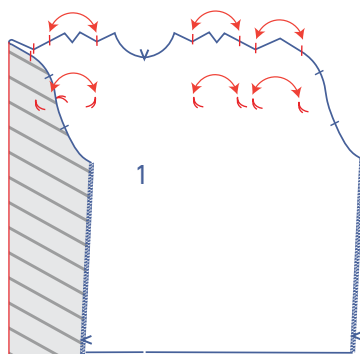
 wrong side

 iron-on interfacing

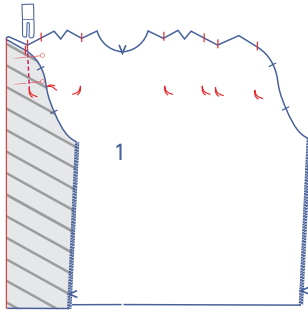


1

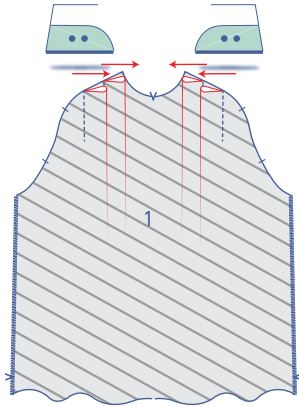
Finish the sides of the front piece (where indicated) with an overlock stitch.



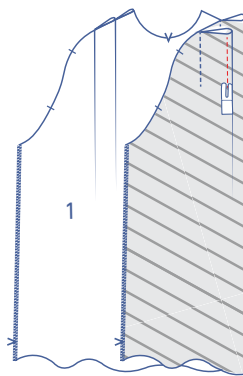
Make the pleats by overlapping the marking threads and notches with the right sides of the fabric touching.



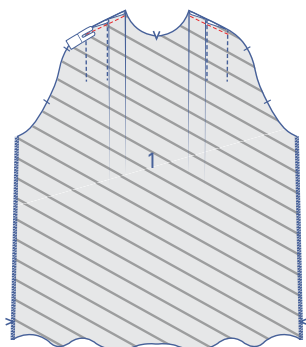
Pin and stitch the pleats vertically into place up to the marking threads.



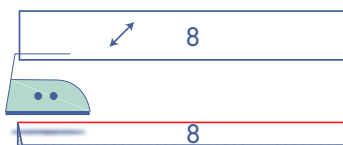
Turn the front piece over so that the wrong side is facing up. Press the pleat allowances towards the CF.



Stitch the pleat allowances together.

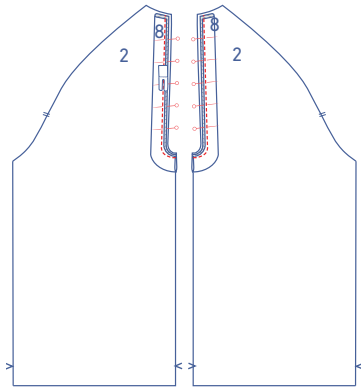


Stitch the pleats temporarily into place at presser foot width from the raw edge.

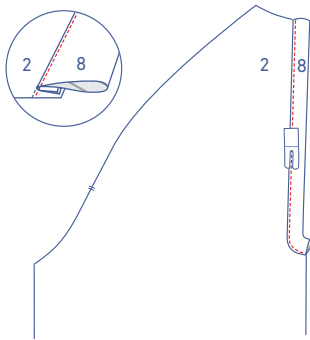


2

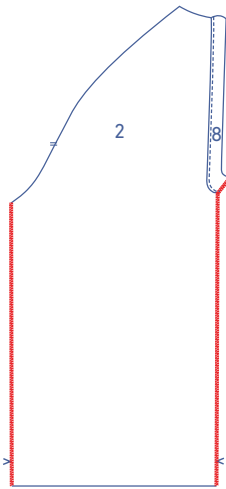
Fold and press the bias tape back (8) in half lengthwise with the wrong sides facing.



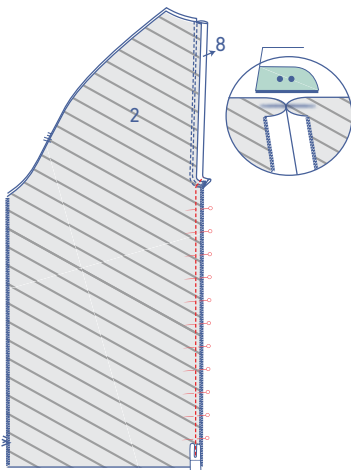
Pin and stitch both raw edges of the bias tape to the right side of the back (2).



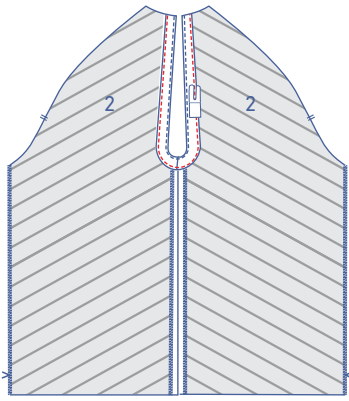
Fold the bias tape and seam allowance over and stitch the bias tape to the seam allowance underneath, right next to the seam.



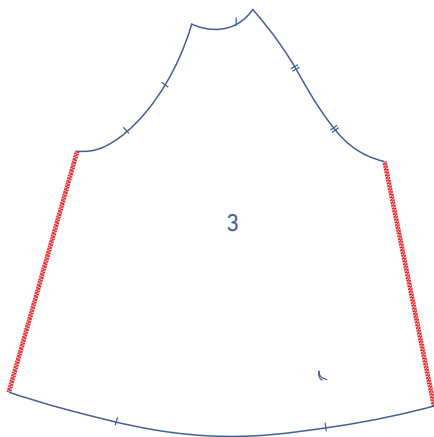
Finish the CB seams (including the short edge of the bias tape) and side seams with overlock stitching.



Place the back pieces on top of one another, right sides together. Pin and stitch the CB seam with the bias tape folded up as shown. Press the seam allowances open.

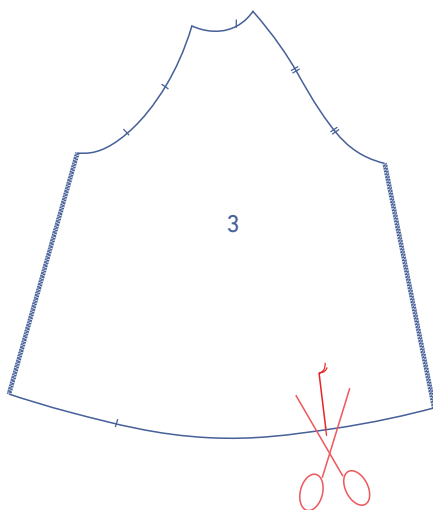


Fold the bias tape all the way over to the wrong side and edgestitch into place.

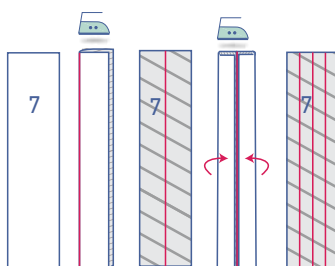


3

Finish the sleeve sides (3) with overlock stitching.

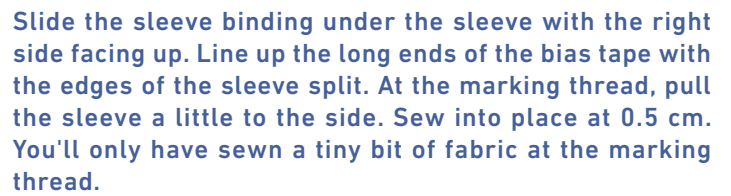
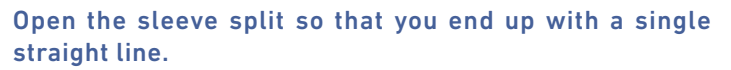


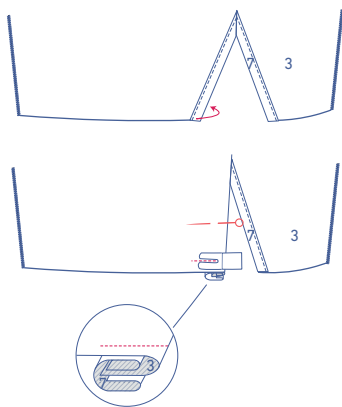
Snip into the sleeve from the notch in the hem up to the marking thread.



Press the sleeve binding (7) as follows:

- Start by pressing in half lengthwise all the way down to create a fold line.
- Next, press the long ends until the raw edges meet the fold line.
- Open the bias tape back out.

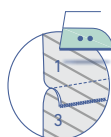
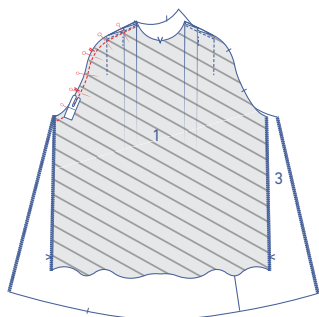




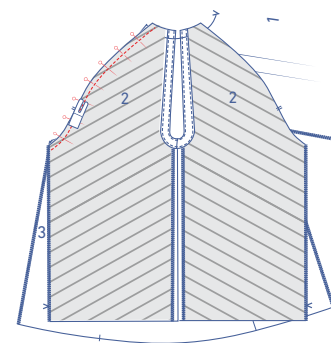
Fold the sleeve binding at the front of the sleeve (i.e. the widest part) towards the wrong side of the sleeve and stitch the bias tape into place at presser foot width from the bottom.

4

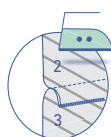
Pin and sew the side of the sleeve with a single notch to the front piece, matching the notches.



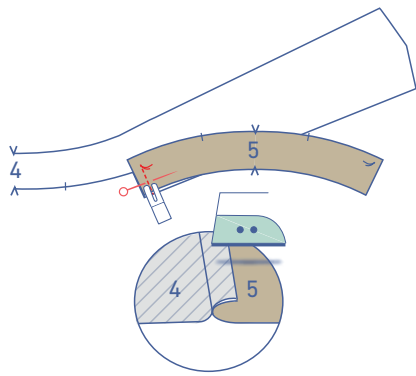
Finish the raw edges with overlock stitching and press the seam allowance towards the sleeve.



Pin and sew the side of the sleeve with a double notch to the back piece, matching the notches.



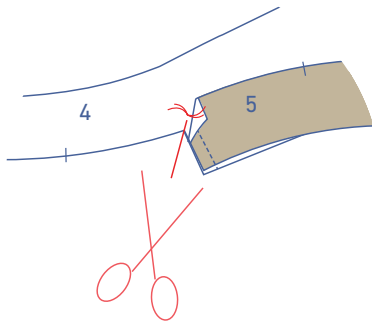
Finish the raw edges with overlock stitching and press the seam allowance towards the sleeve.



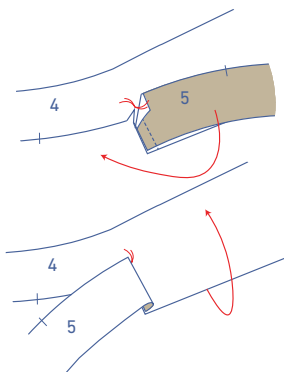
5

Pin the short ends of the interfaced collar piece (5) to the short edge of the tie (4) with marking threads matching. Stitch right up to the marking thread. Press the seam allowance towards the interfaced collar piece.

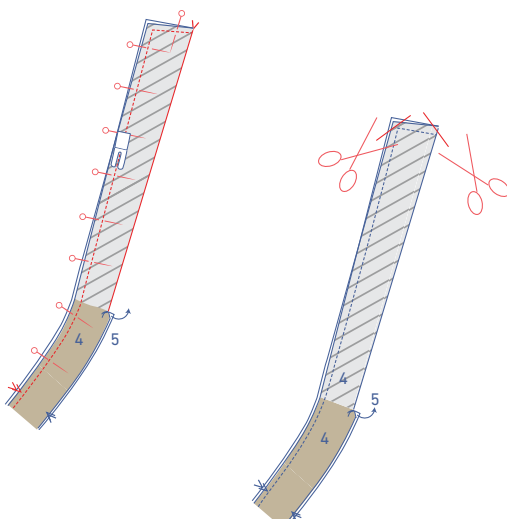
Then snip diagonally into the seam allowance of the tie (4) up to the marking threads.



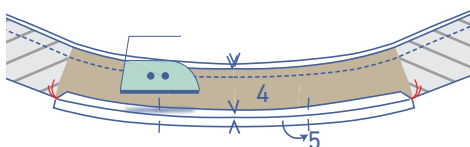
Fold the interfaced collar piece back over with the right side facing up.



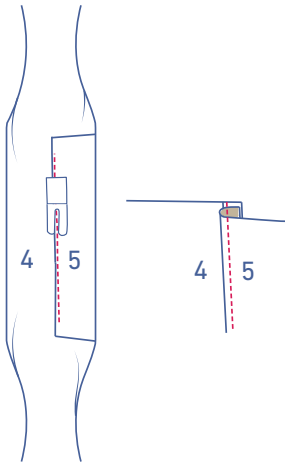
Fold the collar + tie in half lengthwise with the right sides of the fabric touching. Match the CF V notches and stitch the indicated ends into place.



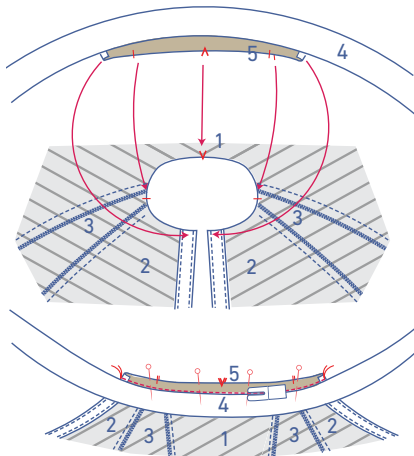
Trim the seam allowance in the corners.



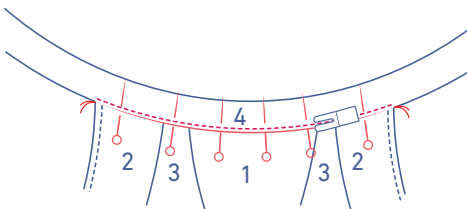
Press the 1 cm seam allowance of one side of the collar piece + tie towards the wrong side from marking thread.



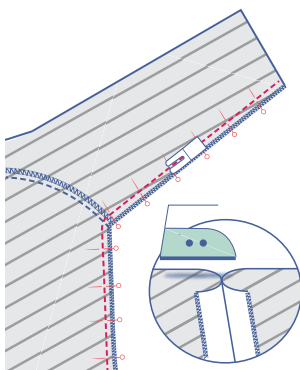
Open out your work so that the right sides are facing up. Fold the interfaced collar piece over and stitch to the seam allowance underneath, right next to the edge.



Pin and stitch the unpressed bottom of the collar to the neckline along the wrong side of the top, matching the notches.

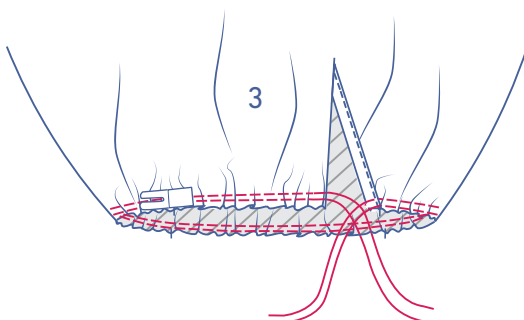
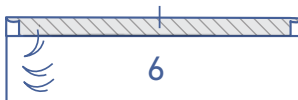
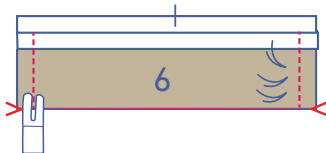
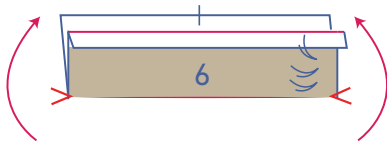
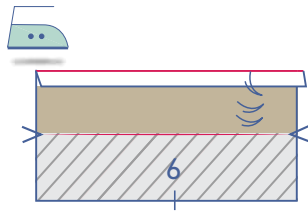
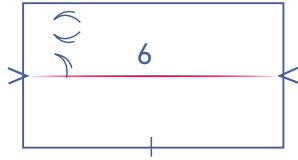
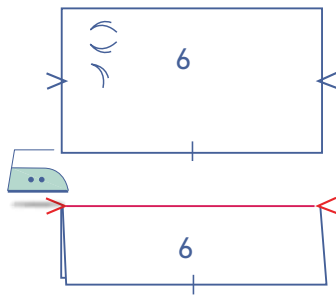


Fold the collar with the pressed bottom towards the right side of the neckline. The fold line should be directly over the previous stitching. Pin and sew into place.



6

Pin and stitch the side and underarm seams and press the seam allowances open.



7

Fold the cuff (6) in half lengthwise with the wrong sides of the fabric facing to create a fold line.

Open back out.

Press the long end without a notch by 1 cm onto the wrong side.

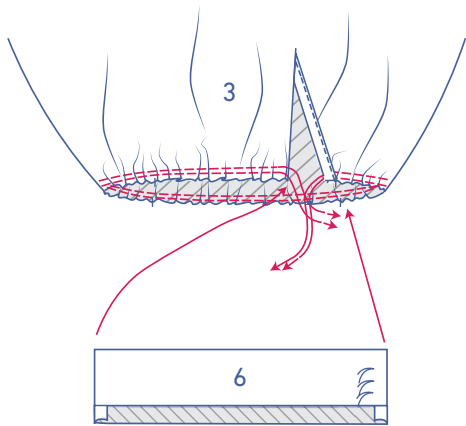
Fold the cuff in half at the pressed fold line with the right sides of the fabric touching.

Sew the short ends.

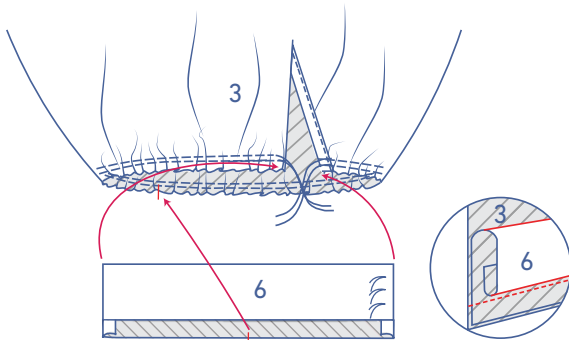
Turn the right way out.

8

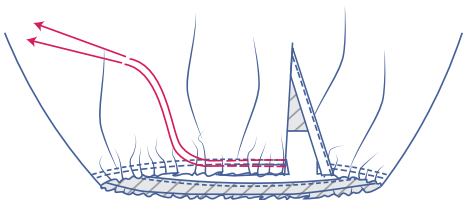
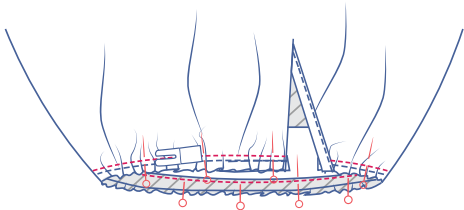
Sew 2 parallel rows of stitching at the bottom of the sleeve with a long stitch length at a low thread tension. Leave long thread tails at the start and the end.



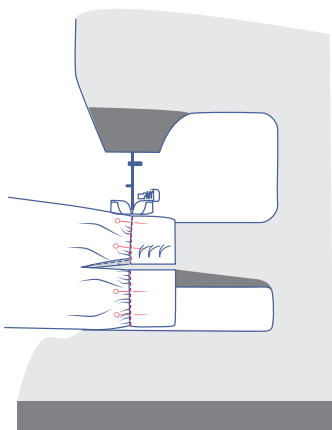
Carefully tug the gathering threads to create ruffles in the fabric.



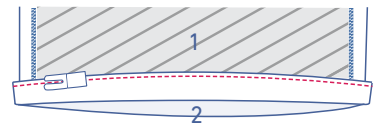
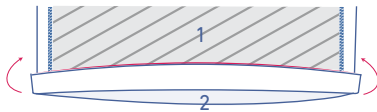
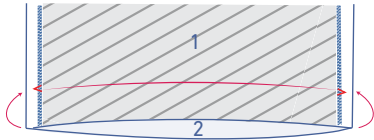
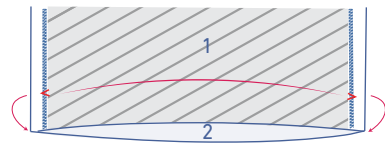
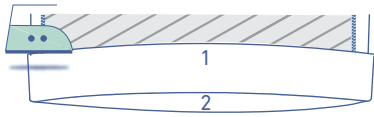
Pin the unpressed raw edge of the cuff to the bottom of the sleeve along the inside (= the wrong side) with the markings matching. Distribute the ruffles until the notches match and stitch into place.



Remove the gathering threads.



Turn the cuff onto the right side of the sleeve. Place the fold line directly over the stitching. Sew into place right next to the edge.

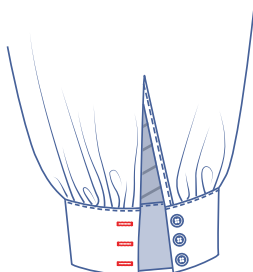
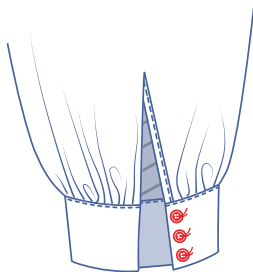


9

Press the hem allowance up at the V notches and then open back out.

Fold the raw edge down to meet the pressed fold line and then fold up again.

Edge stitch into place.



10

Sew the buttons onto the cuff.

Make horizontal buttonholes that line up with the buttons.