

Fiona by Fibre ⚡ood

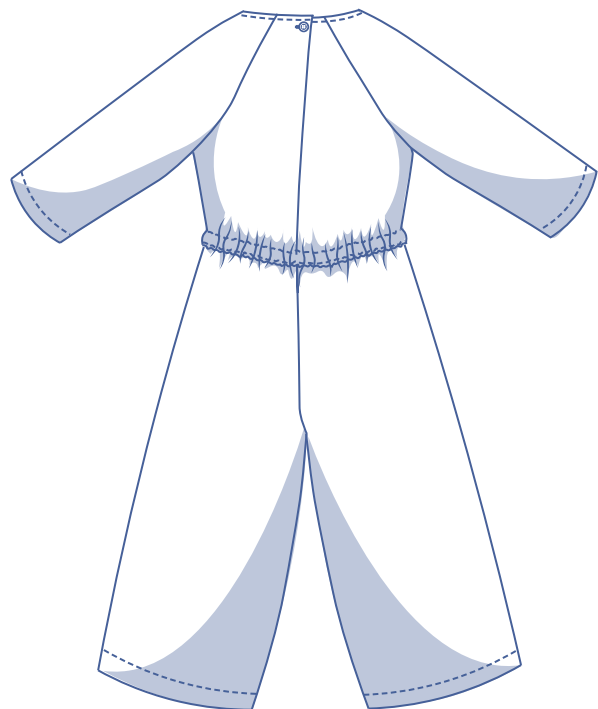
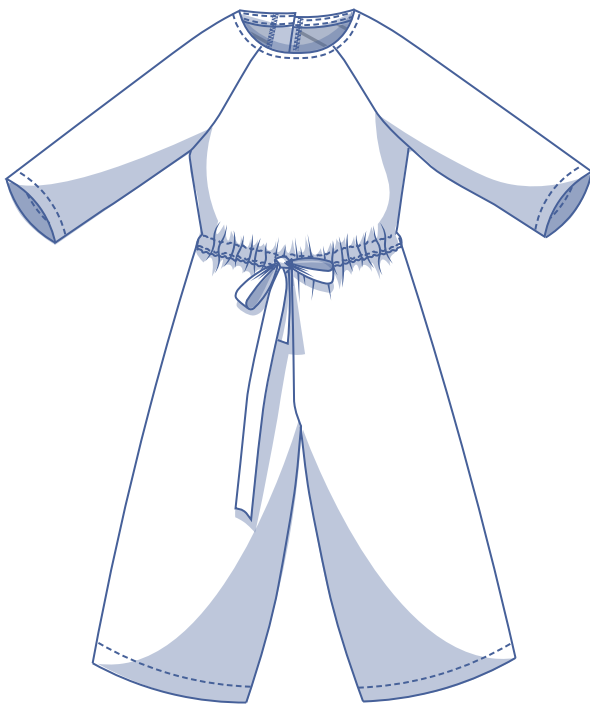


Fiona by Fibre ⚡ood



XS - XXXL

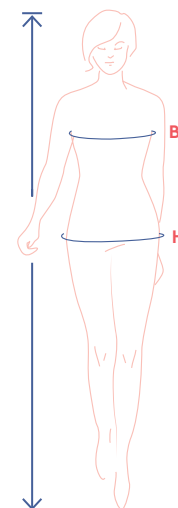
A good workhorse jumpsuit is hard to find. Thankfully, Fiona guarantees you oodles of comfort as well as a gorgeous cut. Wear it casual or dressy. Tighten at the waist with a tie belt or leave it off. The back features an asymmetrical closure for a hint of playfulness. We went for culotte-length trousers, but they can easily be lengthened into a longer version. The round neckline and raglan sleeves complete the look.



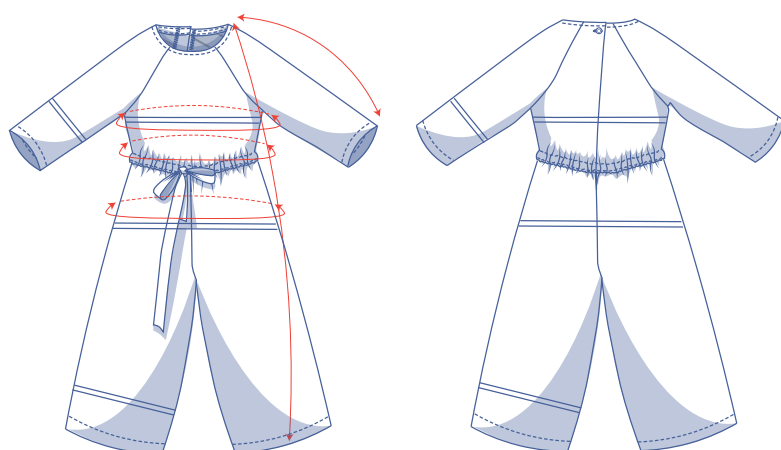
size chart (in cm)

size	XS		S		M		L		XL		XXL		XXXL		
	4	6	8	10	12	14	16	18	20	22	24	26	28	30	32
body height	160	164	166	167	168	169	170	171	172	172	172	172	172	172	172
B (bust)	76	80	84	88	92	96	100	104	110	116	122	128	134	140	146
H (hips)	86	90	94	97	100	103	106	109	115	120	125	130	135	140	145

Choose your size based on your **bust measurement**. If your hip measurements are wider than those in the size chart, check the hip measurements in the chart below to see if there's enough room or whether the pattern needs to be altered. It's easy to do. When tracing the pattern, simply trace from the line of one size to the line of the other size.



pattern measurements (in cm)



This chart's measurements are the pattern measurements based on the fabric type and serve as a reference. Ease has been added to the width measurements (in addition to the exact body measurements) for a more comfortable fit. Fiona is designed to have a more **loose** cut. Depending on the preferred cut, you could decide to go a size smaller or larger than the recommended size.

== shorten or lengthen the pattern here

size	XS	S	M	L	XL	XXL	XXXL
length	134.25	136.5	138.5	140.5	144.25	146.75	149.5
sleeve length*	60.5	62.25	63.75	65.5	67	68.5	70.25
bust	88.75	96.75	104.75	112.75	122.75	134.75	146.75
waistline	88.5	96.5	104.5	112.5	122.5	134.5	146.5
hips	102.25	110.25	118.25	124.25	133.25	145.25	157.25

* Including shoulder length.

Compare the stated lengths to the measured or desired lengths. **Lengthen** or **shorten** the trouser legs, the seat, the top and/or the sleeves by cutting the pattern pieces at the indicated double lines. Then either increase the distance between the cut pieces by the desired amount (to lengthen) or overlap the pieces (to shorten). Make sure that the CF and CB lines and the side seams are always straight.



IMPORTANT

Adjust the amount of fabric to be used based on these alterations.

notions



- Thread
- Iron-on interfacing: max. 10 cm
- Button (Ø 1.5 cm): 1
- Fabric: see table

fabric		XS	S	M	L	XL	XXL	XXXL
fabric width 110 cm	cm	350	360	370	395	415	480	490
fabric width 140 cm	cm	280	315	330	340	350	380	390

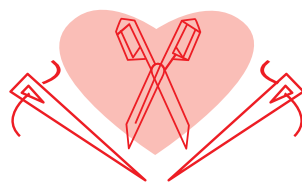
The corresponding fabric layout can be found on page 6 of these sewing instructions.

fabric advice



Make Fiona in a plissé or crepe to give your jumpsuit a breezy, easy-to-wear feel that looks festive at the same time. Double gauze, viscose crêpe, chambray, etc. are also all fantastic options. Would you prefer to go the loungewear route? Just make Fiona in French terry or sweatshirt fabric!

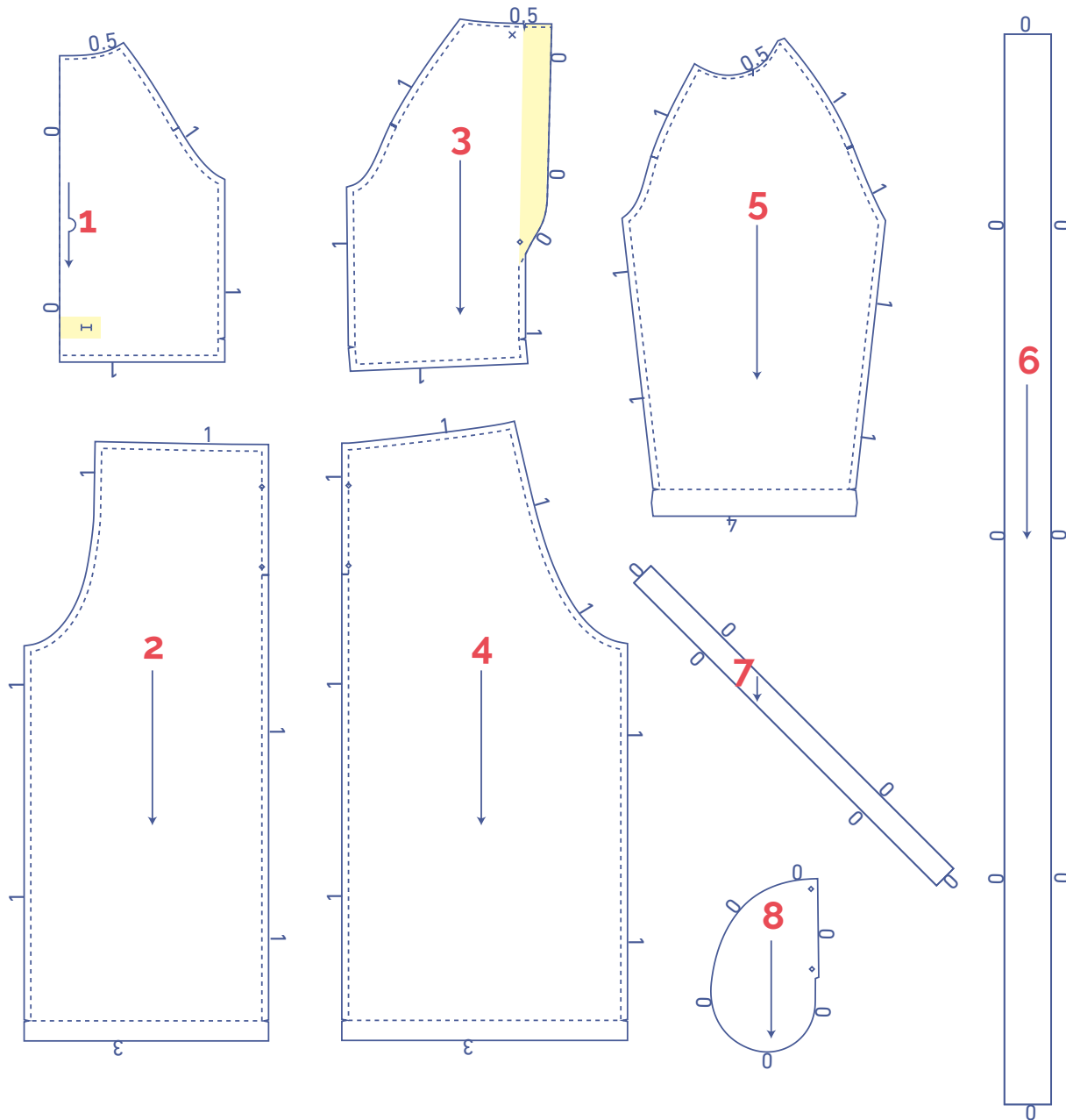
Proud to be #Sewista



pattern pieces & seam allowances (in cm)

To sew the garment as described in the instructions, draw the illustrated seam allowances around the paper pattern pieces before cutting them out. If you are using a PDF pattern, the pattern can be printed with or without seam allowance.




To find out more, watch the [video](#).



1. top piece front: 1x on fabric fold
2. trouser front: 2x
3. top piece back: 2x
4. trouser back: 2x
5. sleeve: 2x
6. tie: 1x (optional since you could also use ready-made ribbon from a shop)
7. bias tape neck: 1x
8. pocket: 4x

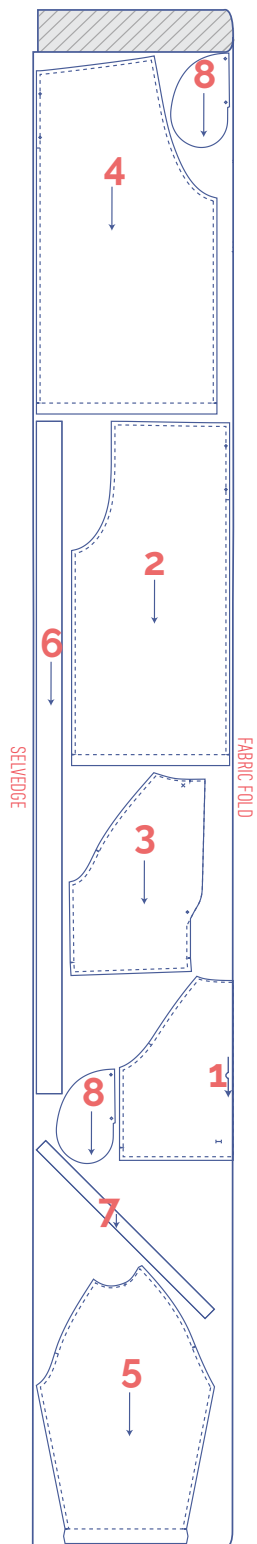
IMPORTANT

The pieces highlighted in light yellow have iron-on interfacing attached to the wrong side.

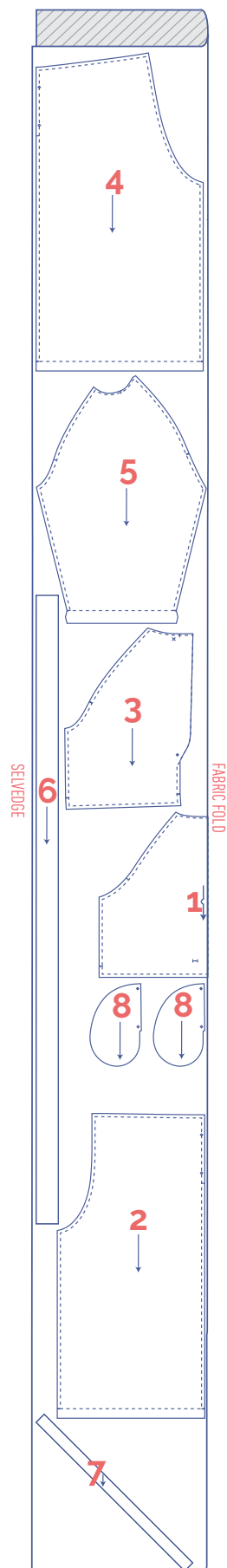
	material type
	fabric
	iron-on interfacing

fabric layout – solid fabrics
fabric width 110 cm

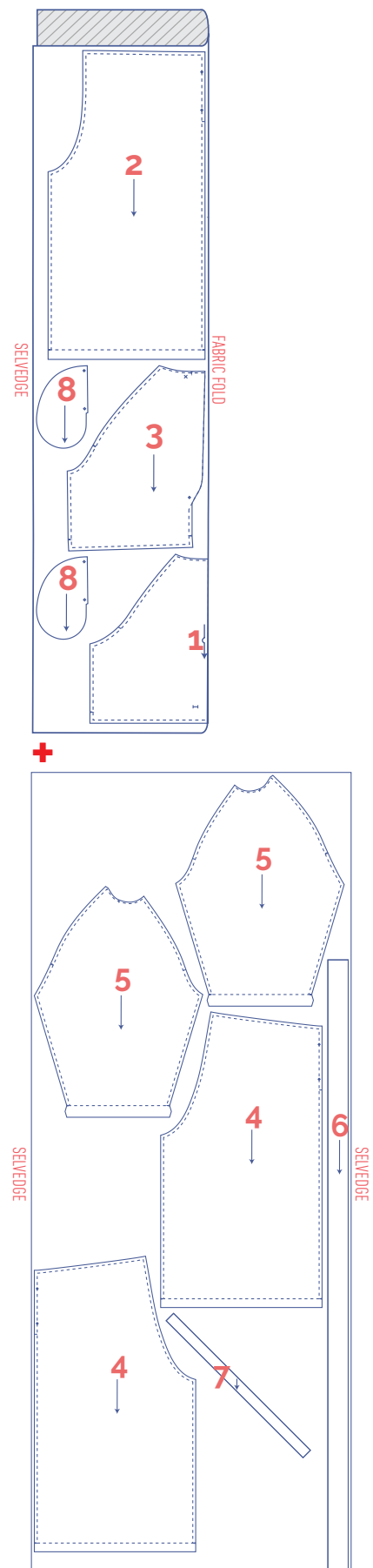
XS - XL



XXL



XXXL



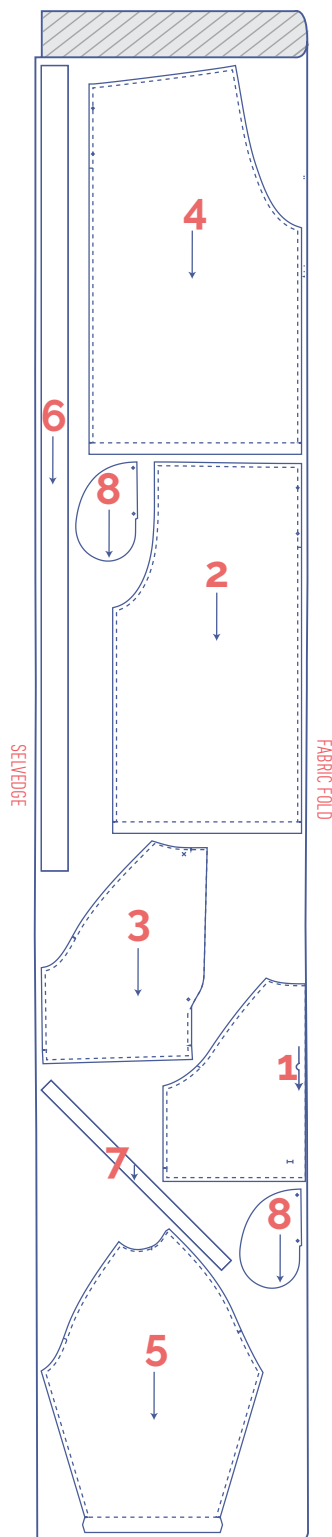
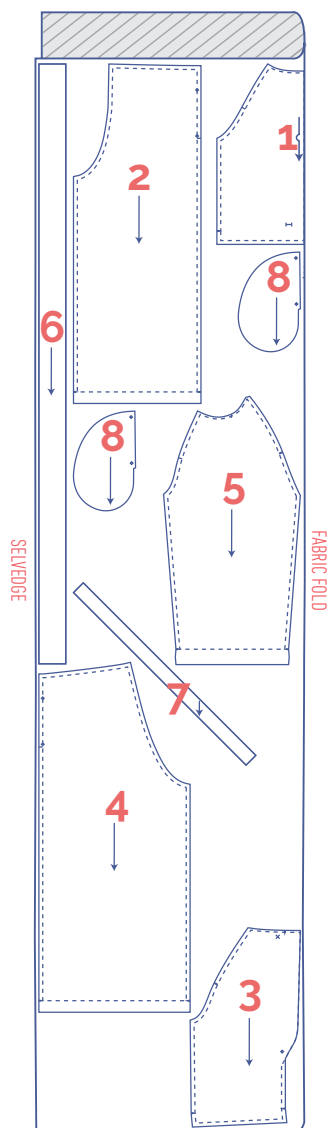
IMPORTANT

You only need pattern pieces 6 and 7 once.

fabric layout – solid fabrics fabric width 140 cm

XS

S - XXXL



IMPORTANT

You only need pattern pieces 6 and 7 once.

marking pattern pieces



Notch the pattern paper and fabric at the following points



single notch



double notch



V notch



Mark the following points using marking thread



centre point



buttonhole



buttons

sewing instructions



The method used to finish the seams depends on the fabric used.
The pieces are always sewn together with the right sides of the fabric facing, unless stated otherwise.

F front

B back

CF centre front

CB centre back

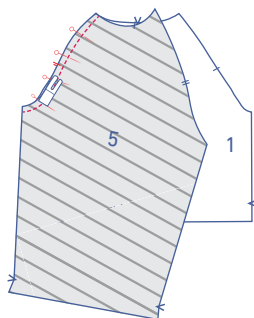
RB right back

LB left back

□ right side

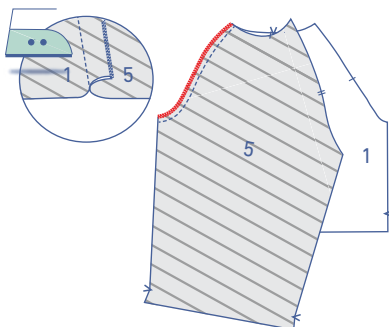
▨ wrong side

▤ iron-on interfacing

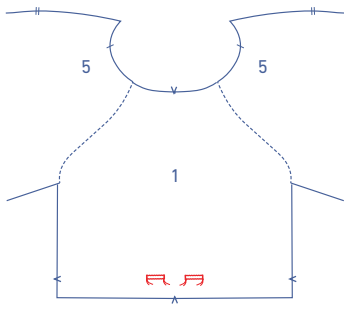


1

Pin and stitch the edge of the sleeve piece with the single notch (5) to the top piece front (1), matching the notches.



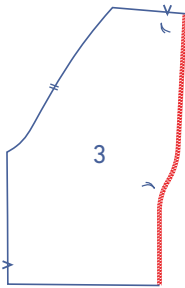
Finish the raw edges with overlock stitching and press the seam allowance towards the sleeve.



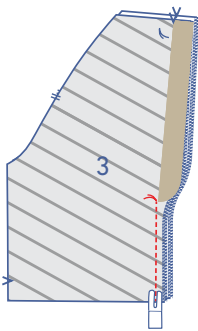
Make horizontal buttonholes where indicated.

2

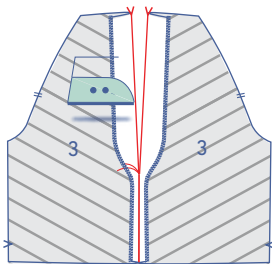
Finish the CB seams of the top piece back (3) with overlock stitching.



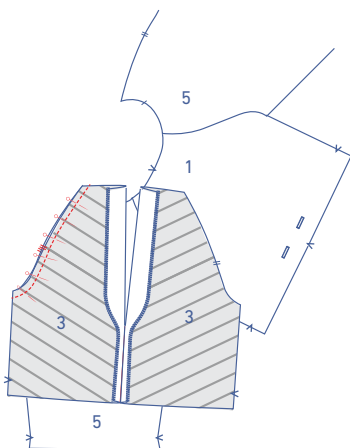
Pin and stitch the CB seams together from the bottom up to the marking thread.

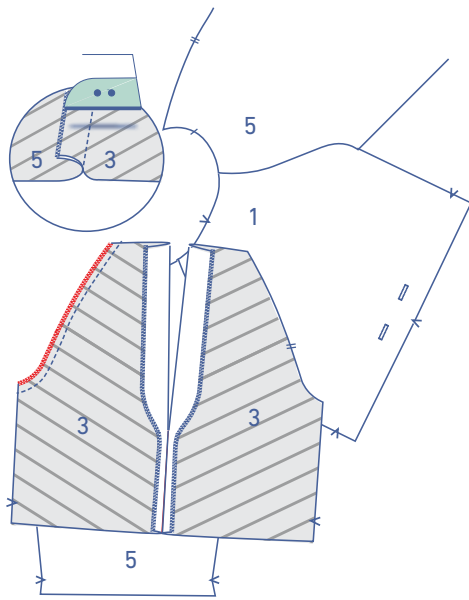


Press the seam allowance open and press the facing towards the wrong side along the V notches in the neckline.

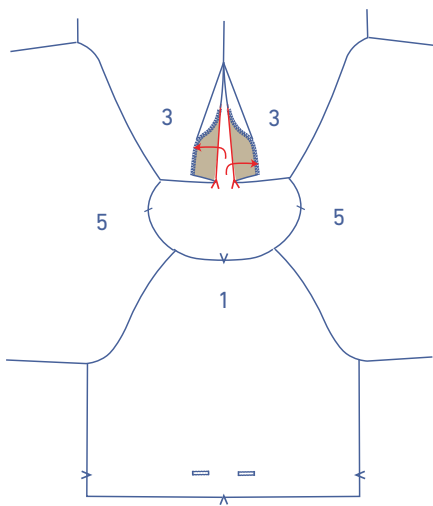


Pin and stitch the edge of the sleeve piece with the double notch to the back top, matching the notches.





Finish the raw edges with overlock stitching and press the seam allowance towards the sleeve.

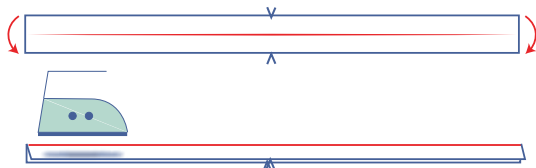
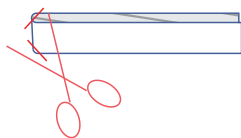


3

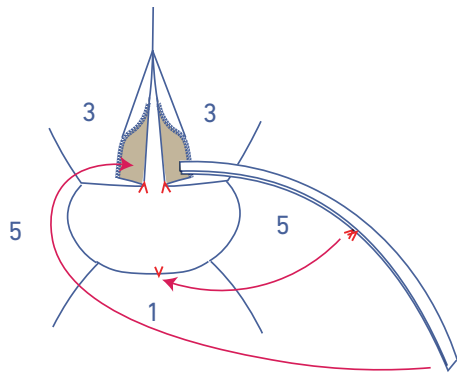
Fold the neckline facing over at the V notch with the right side facing the right side of the top piece back.



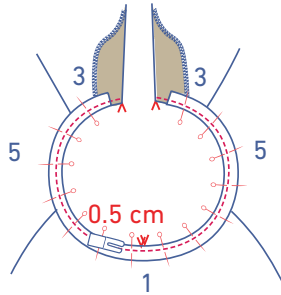
Fold in half crosswise and mark the centre with V notches.



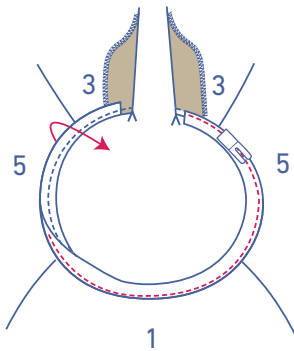
Open back out and press the bias tape (7) in half lengthwise with the wrong sides facing.



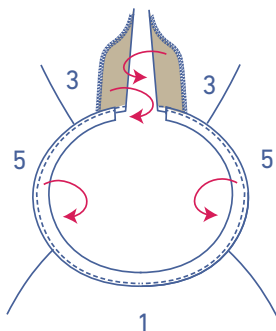
Pin both raw edges of the bias tape to the right side of the neckline. The ends should lie on top of the folded facing but don't quite extend to the fold line (refer to diagram).



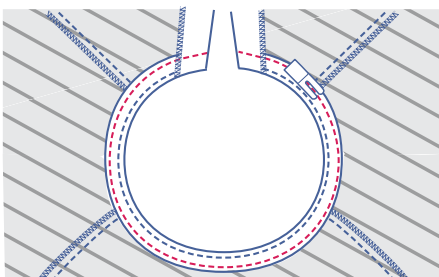
Stitch into place at 0.5 cm.



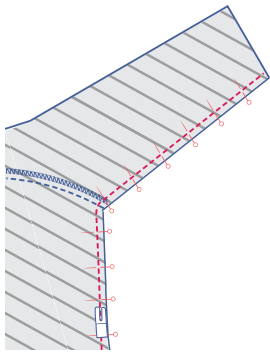
Fold the bias tape and seam allowance over and stitch the bias tape to the seam allowance underneath, right next to the seam.



Fold the facing and bias tape all the way back over to the wrong side.

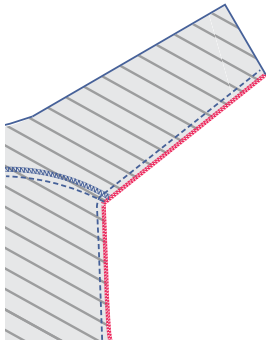


Sew the bias tape into place right next to the edge.

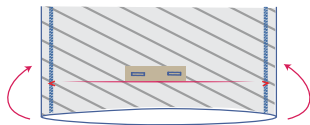


4

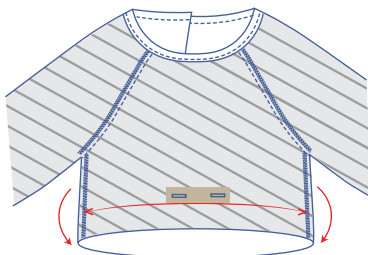
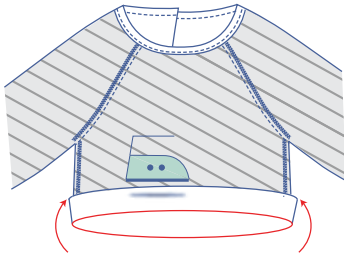
Pin and sew the side and underarm seams.



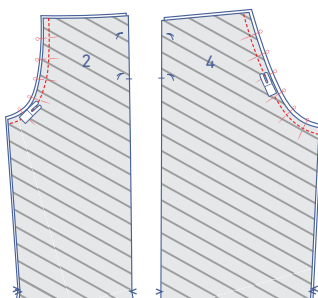
Finish the raw edges with overlock stitching.



Press the bottom of the top piece up towards the wrong side at the V notches.

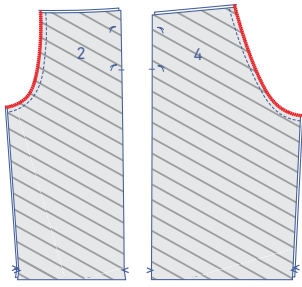


Open back out again.

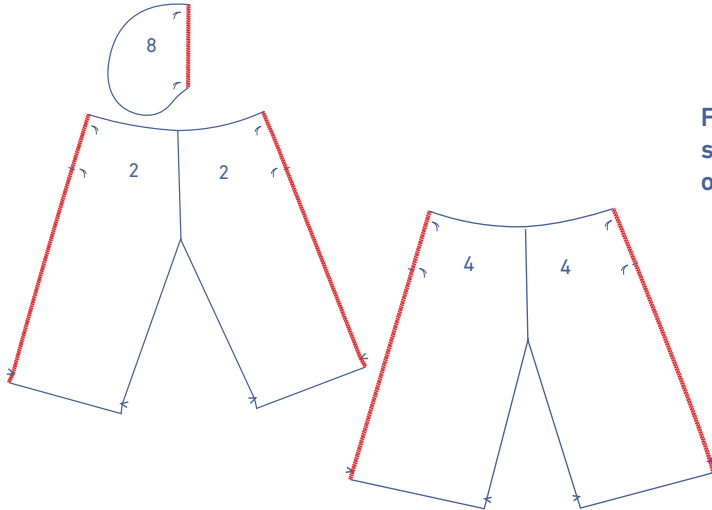


5

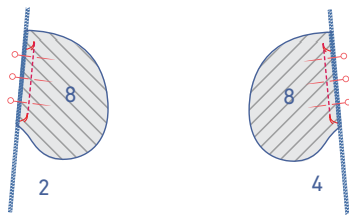
Place the trouser fronts (2) right sides together and sew the CF seam. Then place the trouser backs (4) right sides together and sew the CB seam.



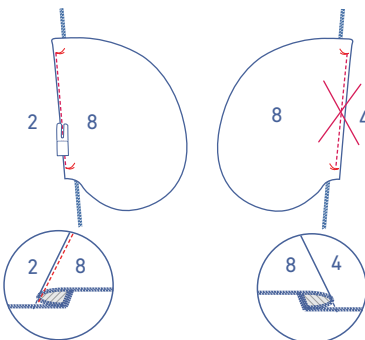
Finish the raw edges with overlock stitching.



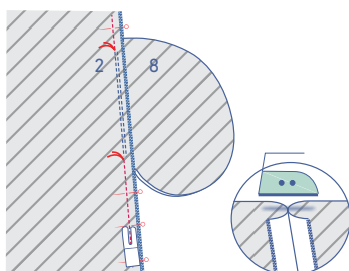
Finish the straight edges of the pocket pieces (8) and side seams of the trouser front (2) and back (4) pieces with overlock stitching.



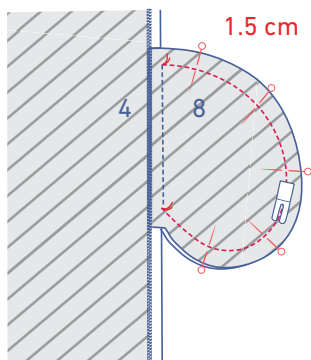
Pin the straight ends of each pocket to the side seams of the trouser front and back pieces, matching the marking threads. Sew into place between the marking threads.



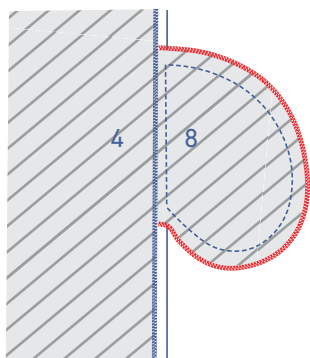
Fold the pockets attached to the trouser front pieces and the seam allowance over. Stitch the pockets to the seam allowance underneath. You don't need to do this for the pockets attached to the trouser back pieces.



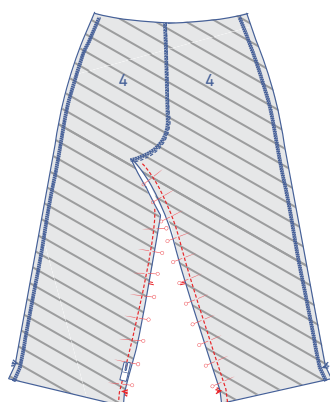
Pin and sew the side seams of the trousers together. Starting at the top, sew into place right up to the marking thread indicating the top of the pocket opening. Now, stitch from the next marking thread down to the bottom. Press the seam allowance open.



Pin and sew the contours of the pocket pieces together where indicated.

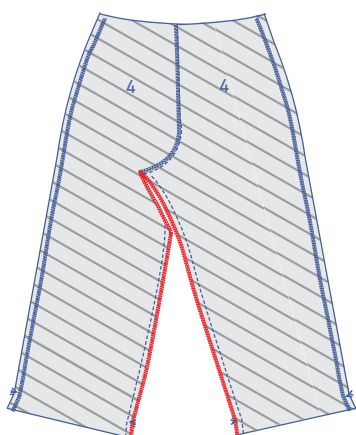


Finish the raw edges with overlock stitching.

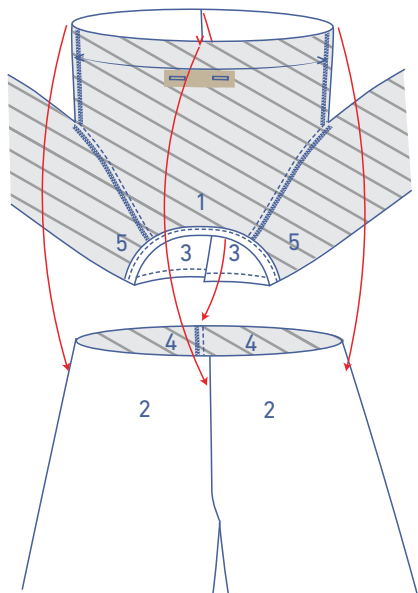


6

Pin and sew the inseams together.

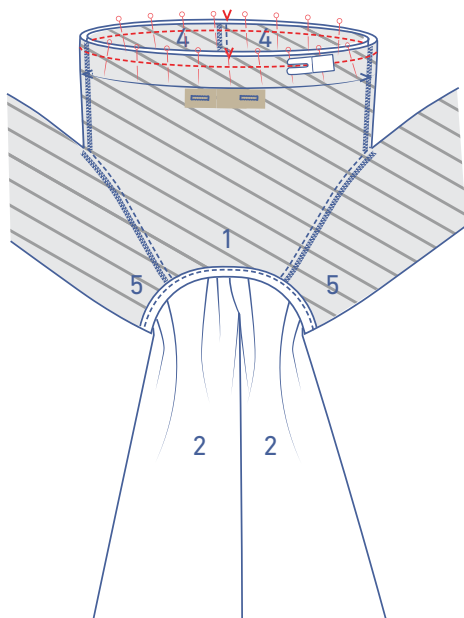


Finish the raw edges with overlock stitching.

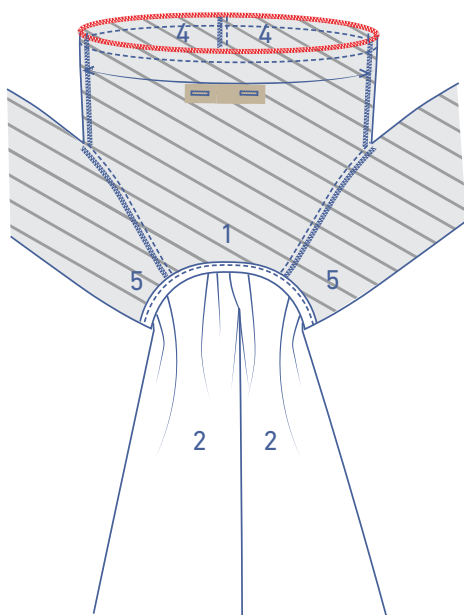


7

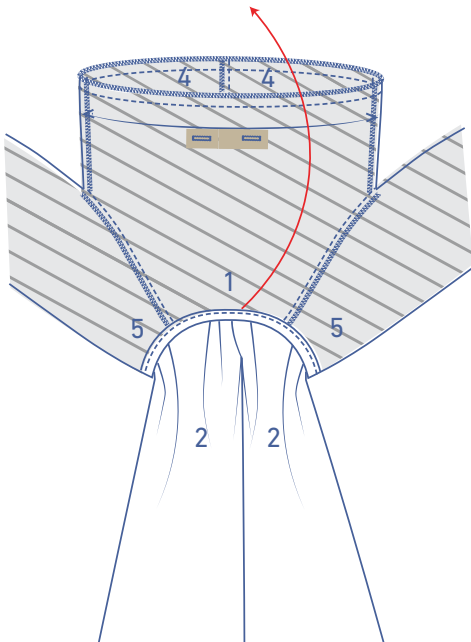
Pull the trousers through the neckline with the right sides of the fabric facing, and align the raw edges at the waist.



Pin and stitch the top to the trousers, matching seams and notches.

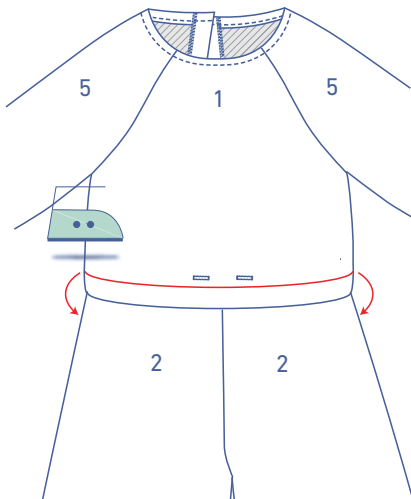


Finish the raw edges with overlock stitching.

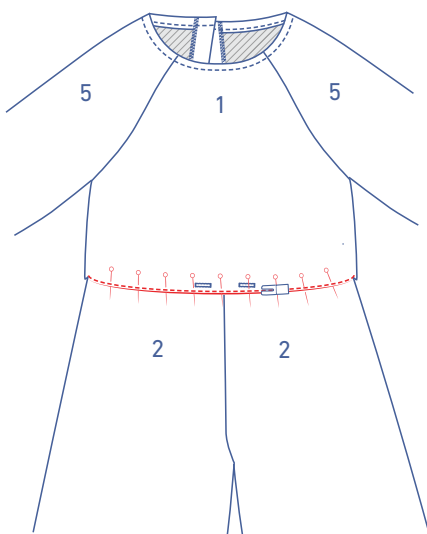


8

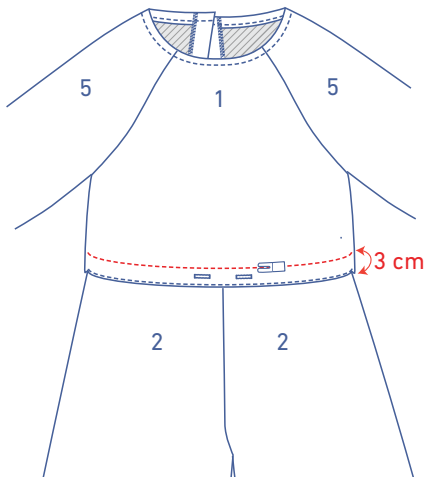
Open the top piece back out so that the right side of the fabric is visible.



Press the top piece down along the pressed fold line you made earlier.



Pin and stitch the top to the trousers right next to the pressed fold line.



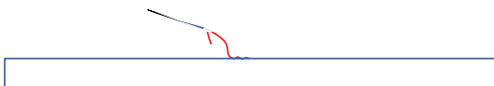
Sew a second line of stitching 3 cm above the first. You now have your casing.



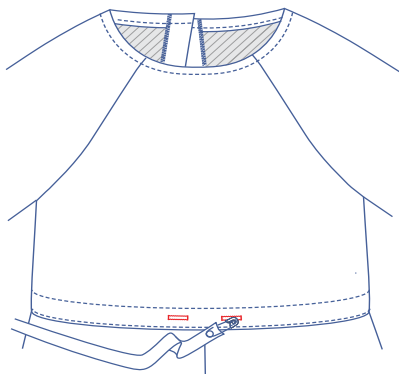
Fold the tie (6) in half lengthwise with the right sides of the fabric touching.



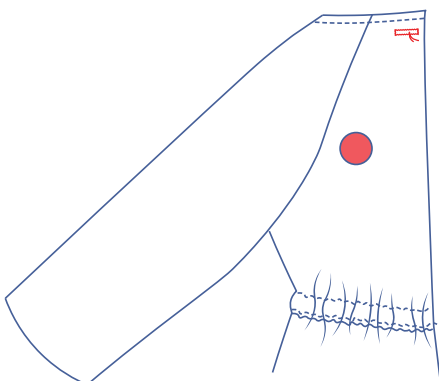
Stitch the edges indicated but leave an opening in the middle to turn the tie the right way out again.



Turn the tie the right way out and hand sew or stitch the opening closed.

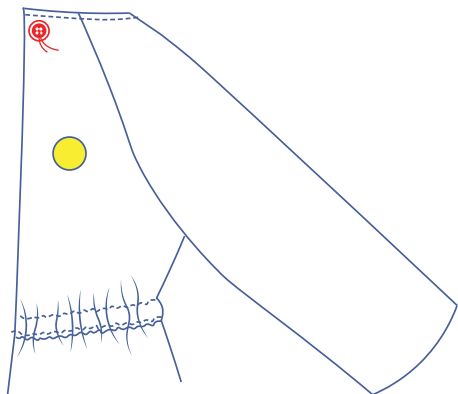


Thread the tie through the casing via the buttonholes.



9

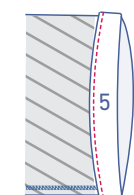
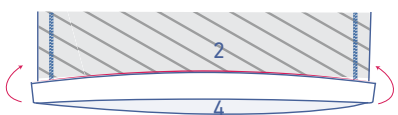
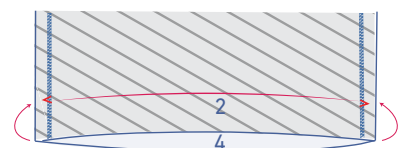
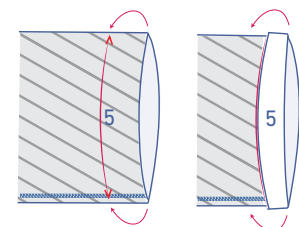
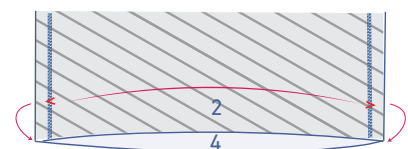
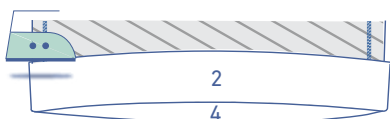
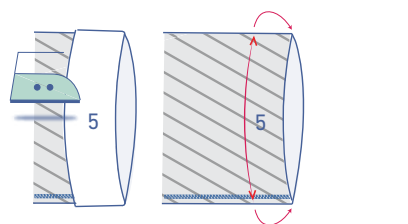
Make a horizontal buttonhole where indicated on the LB.



Sew the button on the RB where indicated.

10

Press the hem allowance of the trousers and sleeves towards the wrong side and open back out.



Place the raw edge against the pressed fold line and fold back up along the pressed fold line.

Edge stitch into place.