

Veronica by Fibre ood



Veronica by Fibre ood



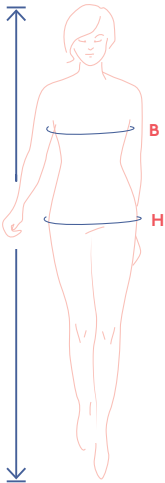
XS - XXXL

Veronica is a true choose your own adventure chameleon pattern. It can be a sleeveless jumpsuit, collared playsuit, dress, or a top. Or all four, if you're feeling particularly inspired! The rounded chest pockets close with a flap, and the lapped seams have decorative topstitching. Super chill! Want to add a belt for the finishing touch? Just set your sewing machine to turbo to do the topstitching. And that's how you make Veronica!



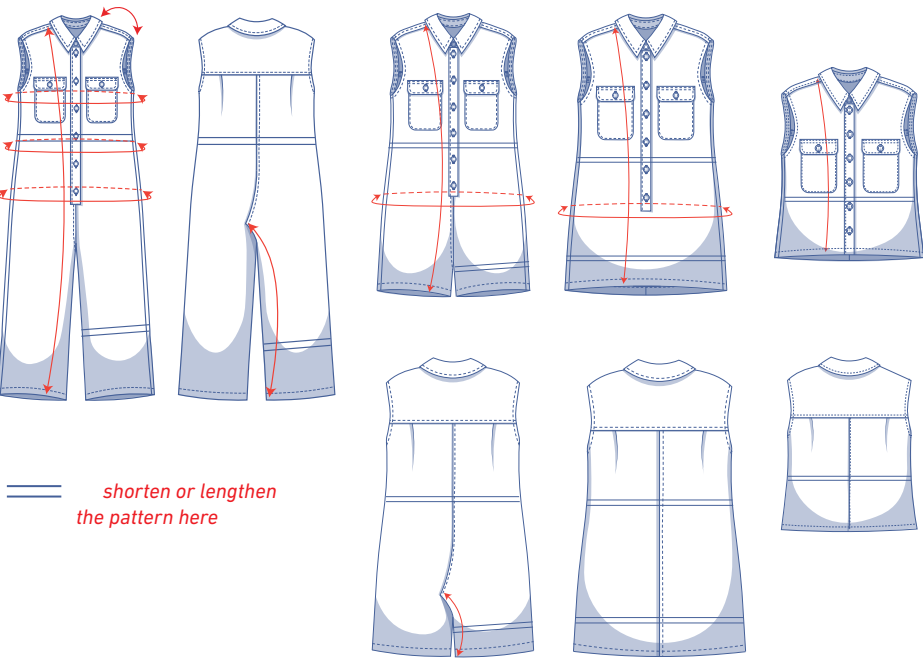
size chart (in inches)

size	XS		S		M		L		XL		XXL		XXXL		
	0	2	4	6	8	10	12	14	16	18	20	22	24	26	28
body height	5' 25"	5' 38"	5' 45"	5' 48"	5' 51"	5' 54"	5' 58"	5' 61"	5' 64"	5' 64"	5' 64"	5' 64"	5' 64"	5' 64"	5' 64"
B (bust)	29.9	31.5	33.1	34.6	36.2	37.8	39.4	40.9	43.3	45.7	48	50.4	52.8	55.1	57.5
H (hips)	33.9	35.4	37	38.2	39.4	40.6	41.7	42.9	45.3	47.2	49.2	51.2	53.1	55.1	57.1



Choose your size based on the **bust measurement**. Is your hip measurement wider than what's listed in the size chart? If so, check the hip measurements in the chart below to see if there's enough room or whether the pattern size needs to be altered. It's easy to do. When tracing the pattern, simply trace from the line of one size to the line of the other.

pattern measurements (in inches)



This chart's measurements are the pattern measurements based on the fabric type and serve as a reference. Ease has been added to the width measurements (in addition to the exact body measurements) for a more comfortable fit. Veronica is designed to have a **relaxed cut**. Depending on the preferred fit, you could go a size smaller or larger than the recommended size.

size	XS	S	M	L	XL	XXL	XXXL
length. jumpsuit	52.5	53	53.4	53.8	54.9	55.5	56.1
length. playsuit	35.8	36.2	36.7	37.1	38.1	38.7	39.4
length. top	19.8	20.5	21.2	21.9	22.8	23.7	24.6
dress length	35.3	35.7	36.1	37	38	39	39.6
shoulder length	6.3	6.5	6.7	7	7.2	7.5	7.7
bust	39.2	42.4	45.5	48.7	52.6	57.3	62
waistline	32.1	33.7	36.8	39.2	43.3	48.4	53.6
hips. jump-/playsuit	38	41.2	43.5	45.9	49.4	53.9	58.5
hips. dress	35.3	38.4	40.8	43.1	46.7	51.2	55.7
inseam length. jumpsuit	23.8	23.8	23.8	23.8	23.8	23.8	23.8
inseam length. playsuit	6.9	6.9	6.9	6.9	6.9	6.9	6.9

Compare the stated lengths to the measured or desired lengths. **Shorten** or **lengthen** the rise and/or trouser legs or dress by cutting the pattern pieces at the indicated double lines. Then either increase the distance between the cut pieces by the desired amount (to lengthen) or overlap the pieces (to shorten). Make sure that the CF and CB lines and the side seams are always straight.

IMPORTANT

Adjust the amount of fabric to be used based on these alterations.



notions



- Thread
- Iron-on interfacing: max. 26"
- Buttons (Ø 5/8"): see table
- Fabric: see table

buttons	XS	S	M	L	XL	XXL	XXXL
jumpsuit/playsuit /dress	9	9	9	9	10	10	10
top	8	8	8	8	9	9	9

fabric use. jumpsuit		XS	S	M	L	XL	XXL	XXXL
fabric width 43"	yd	3 1/2	3 1/2	3 1/2	4	4	4 3/4	5
fabric width 55"	yd	2 3/4	3	3	3	3 1/2	3 3/4	3 3/4

The corresponding fabric layout can be found on page 7 of these sewing instructions.

fabric use. playsuit		XS	S	M	L	XL	XXL	XXXL
fabric width 43"	yd	2 3/4	2 3/4	2 3/4	3	3	3 1/2	3 3/4
fabric width 55"	yd	2 1/4	2 1/4	2 1/4	2 1/2	2 3/4	2 3/4	2 3/4

fabric use. top		XS	S	M	L	XL	XXL	XXXL
fabric width 43"	yd	1 1/2	1 1/2	1 3/4	1 3/4	2	2	2 1/4
fabric width 55"	yd	1 1/4	1 1/4	1 1/4	1 1/4	1 1/2	1 1/2	1 1/2

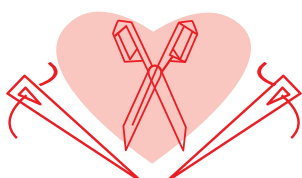
fabric use. dress		XS	S	M	L	XL	XXL	XXXL
fabric width 43"	yd	2 1/2	2 1/2	2 3/4	3	3	3	3 1/4
fabric width 55"	yd	2	2	2	2 1/4	2 1/4	2 1/2	2 1/2

fabric advice



Veronica should be made in a fabric with body such as twill cotton, poplin, jeans, fine rib velvet, linen. ... Fabrics that are too supple and light are less suitable for this jumpsuit.

Proud to be #Sewista



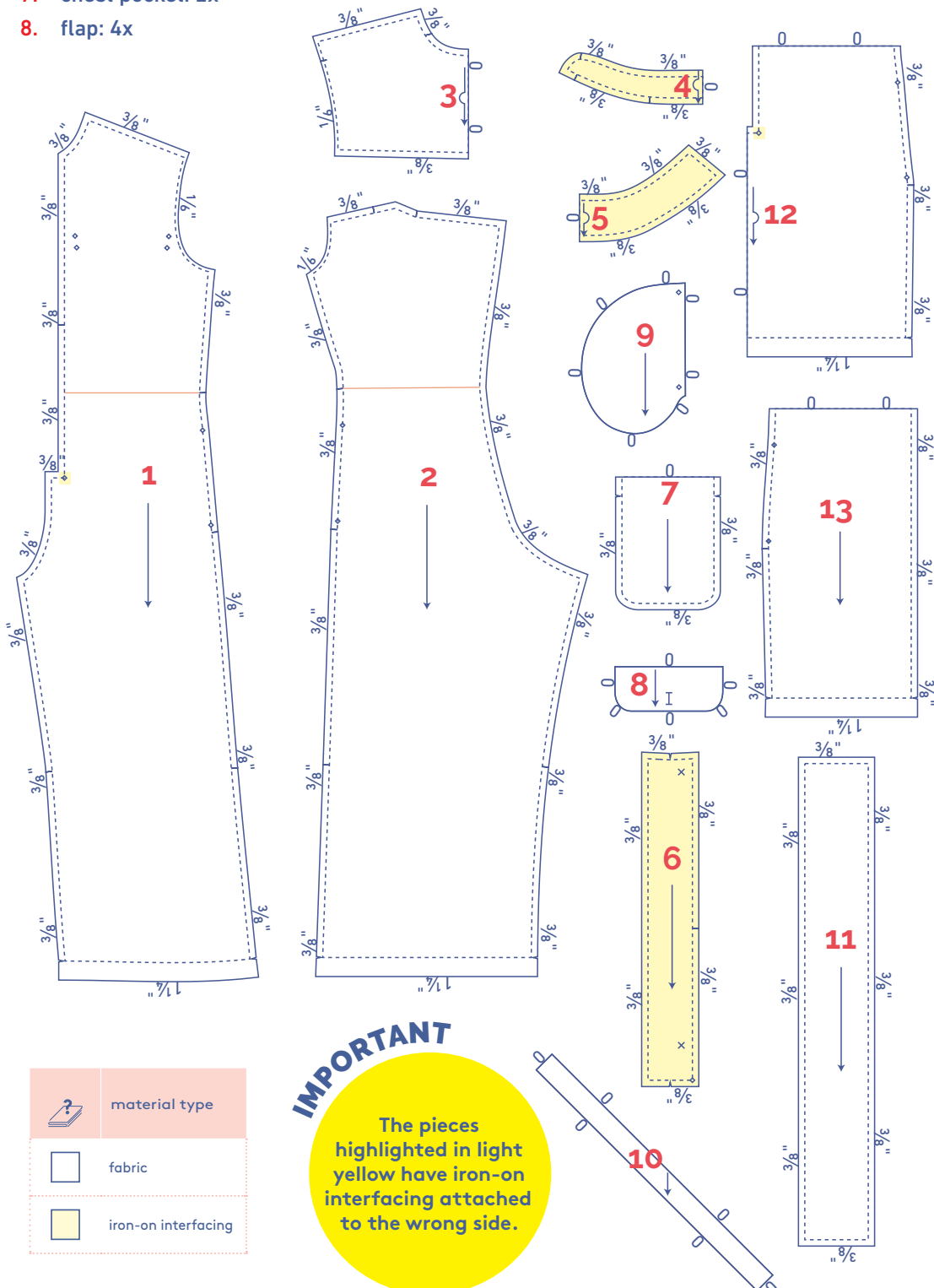
pattern pieces & seam allowances (in inches)

To sew the garment as described in the instructions, draw the illustrated seam allowances around the paper pattern pieces before cutting them out. If you are using a PDF pattern, the pattern can be printed with or without seam allowance. To find out more, watch the [video](#).

1. front: 2x
2. back: 2x
3. yoke: 1x on fabric fold
4. collar band: 2x on the fabric fold
5. collar: 2x on fabric fold
6. button placket: 2x
7. chest pocket: 2x
8. flap: 4x
9. pocket: 4x
10. bias tape: 2x
11. belt: 2x (optional)

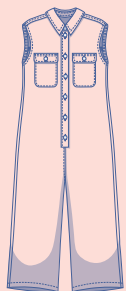
dress

12. dress front: 1x on fabric fold
13. dress back: 2x



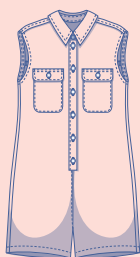
TIP

Veronica can be made in all kinds of ways. from a jumpsuit or playsuit to a blouse or a dress.



jumpsuit

To make the jumpsuit, you'll need pattern pieces 1 through 10. Pattern piece 11, the belt, is optional.



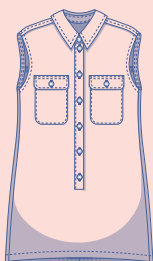
playsuit

To make the playsuit, shorten pattern pieces 1 and 2 to your preferred length and add $\frac{3}{4}$ " of hem allowance to finish the seams according to the instructions.



blouse

To make the blouse, cut pattern pieces 1 and 2 at the orange line, lengthening them to your desired length. Be sure to add $\frac{3}{4}$ " of hem allowance to finish the seams according to the instructions. Remember to alter the length of pattern piece 6 as well to match.

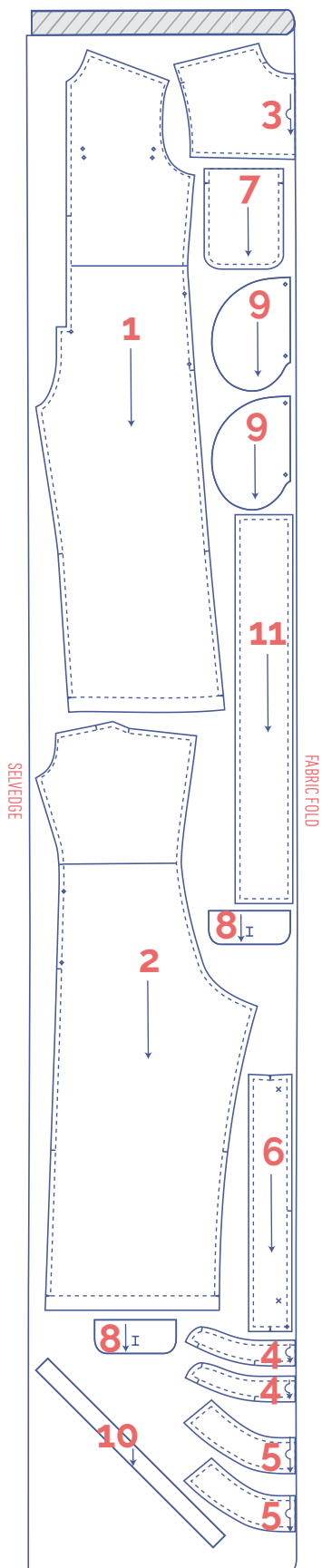


dress

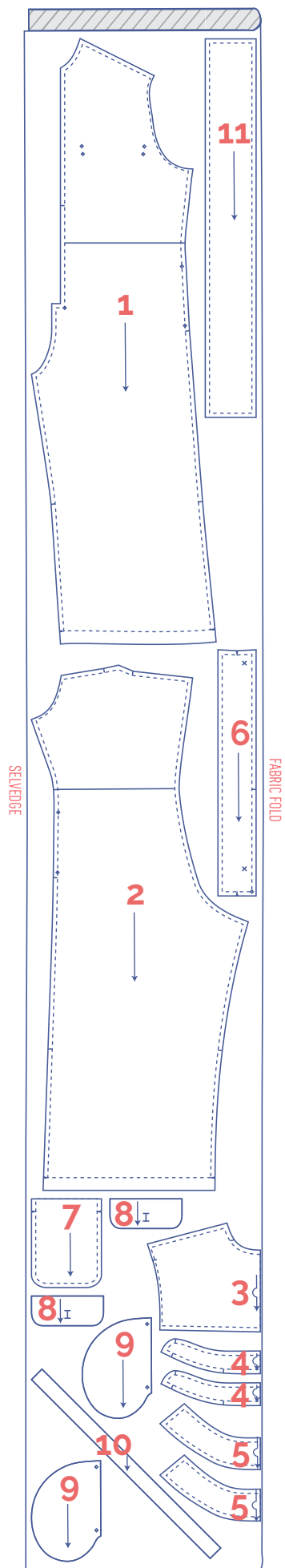
To make the dress, cut pattern pieces 1 and 2 at the orange line and tape them to the tops of pattern pieces 12 and 13.

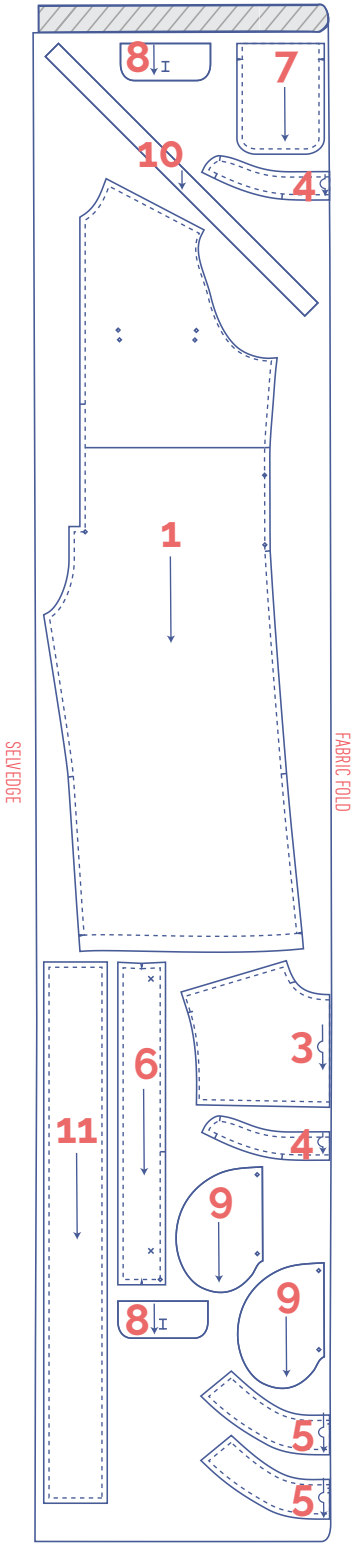
jumpsuit fabric layout – solid fabrics fabric width 43"

S - M

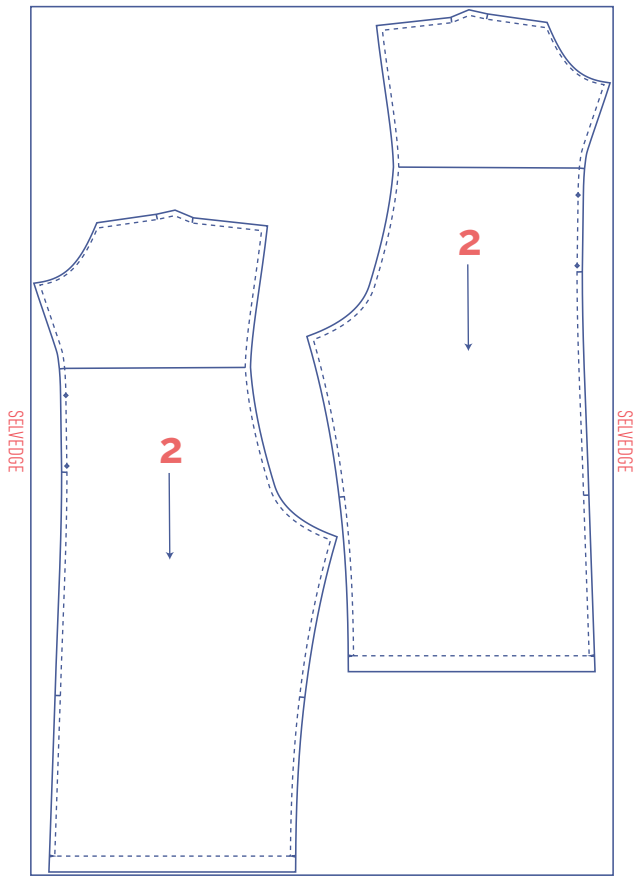


L - XL









+



marking pattern pieces

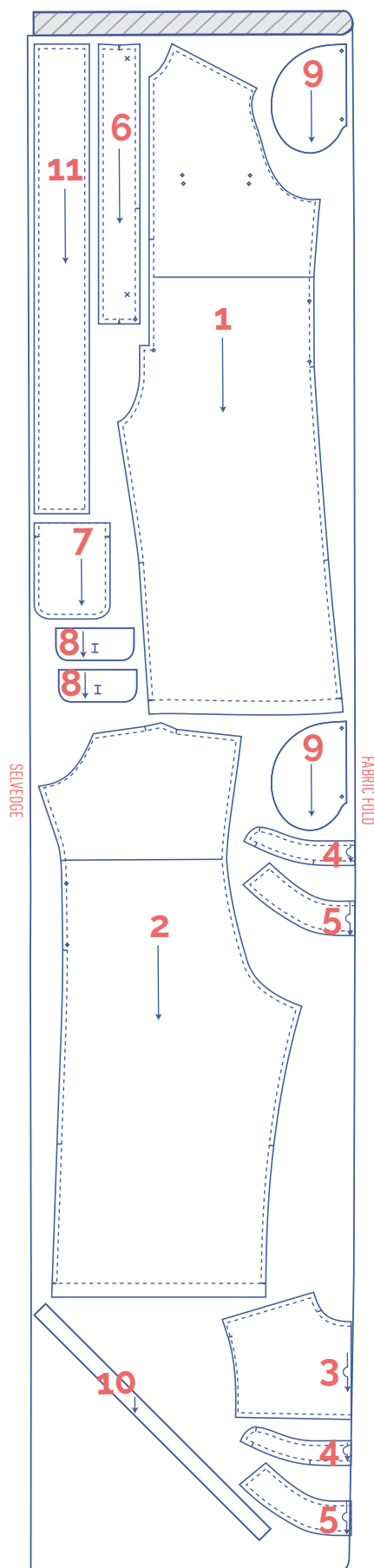
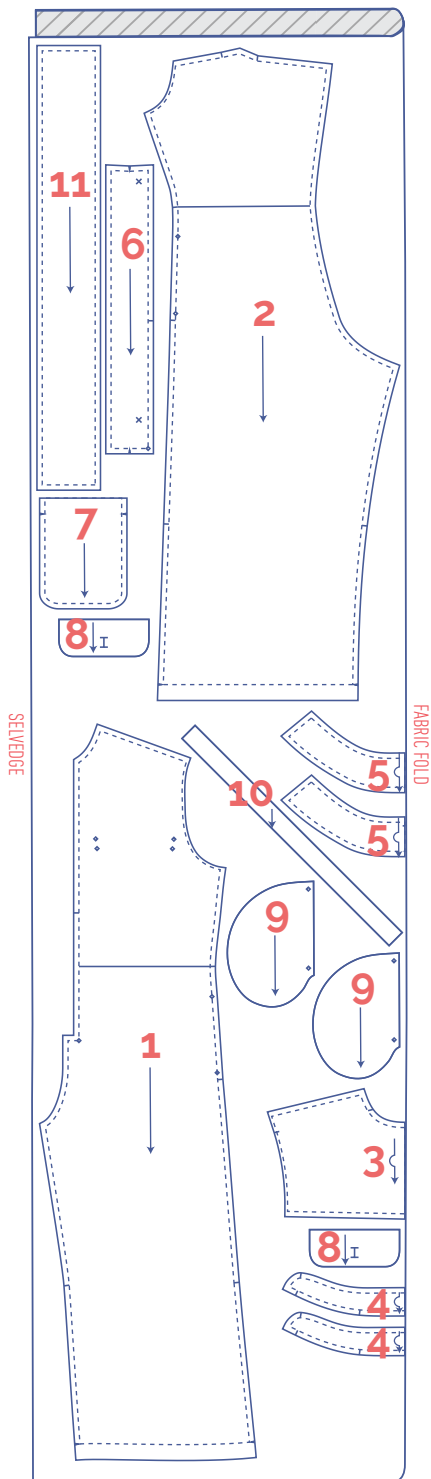
	Notch the pattern paper and fabric at the following points
	single notch
V	V notch/fabric fold

	Mark the following points with marking thread
	centre point
	snap fastener
	buttonhole

jumpsuit fabric layout – solid fabrics fabric width 55"

XS - L

XL - XXXL



marking pattern pieces



Notch the pattern paper and fabric at the following points



single notch



V notch/fabric fold



Mark the following points with marking thread



centre point



snap fastener



buttonhole

sewing instructions



The method used to finish the seams depends on the fabric used.
The pieces are always sewn together with the right sides of the fabric facing, unless stated otherwise.

F front

B back

CF centre front

CB centre back

RF right front

LF left front

RB right back

LB left back



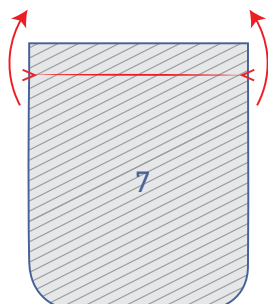
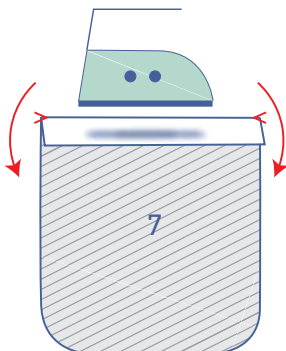
right side



wrong side

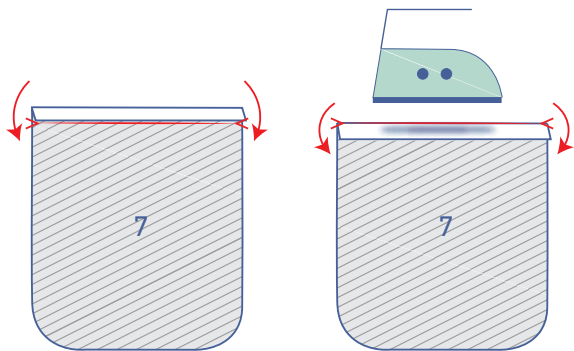


iron-on interfacing

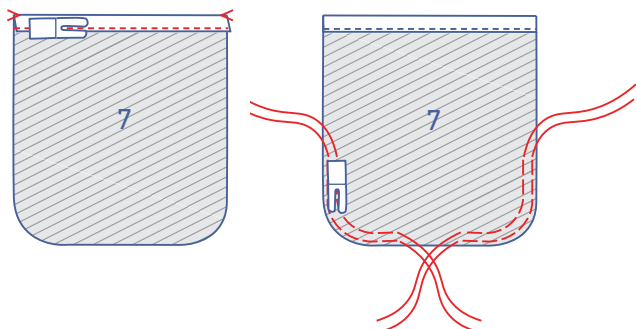


1

Press the top of the chest pocket (7) over at the V notches and then open back out.

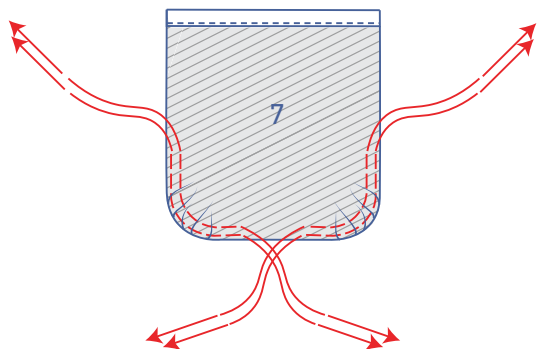


Fold the raw edge to meet the fold line and then fold over again.

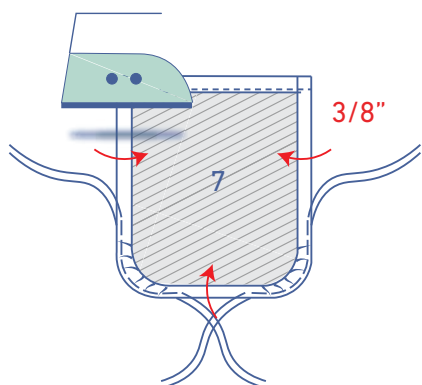


Sew into place.

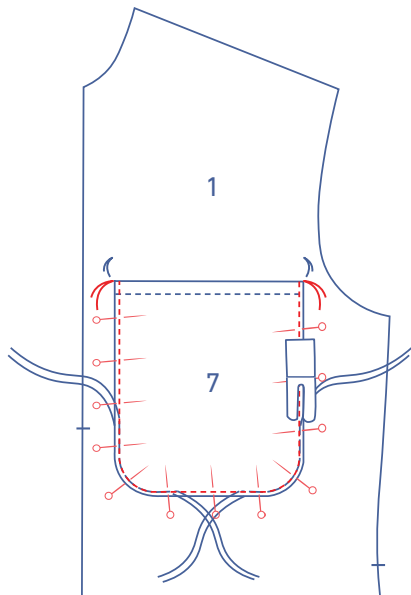
Use a long stitch at a low thread tension to sew the curved corners at the bottom of the chest pocket with two lines of parallel stitching. Leave a length of thread at the beginning and end of your stitching.



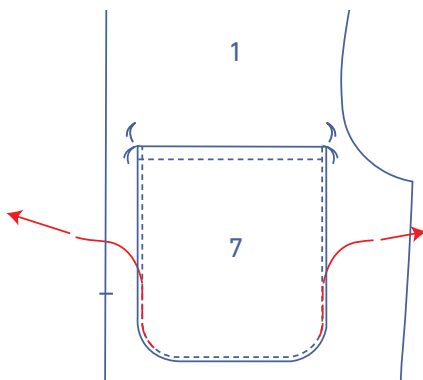
Carefully tug the threads to gently pucker the fabric and roll the pocket's seam allowance.



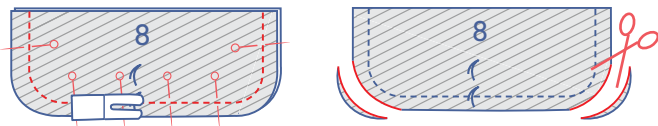
Press $\frac{3}{8}$ " of the edges towards the wrong side.



Pin the chest pocket to the front (1) where indicated.
Edgestitch into place and

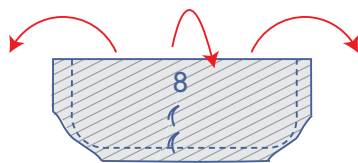


remove the gathering threads.

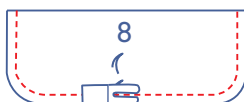


Pin the edges of the flaps (8) together where indicated
and sew.

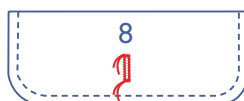
Trim the seam allowance at the curves.



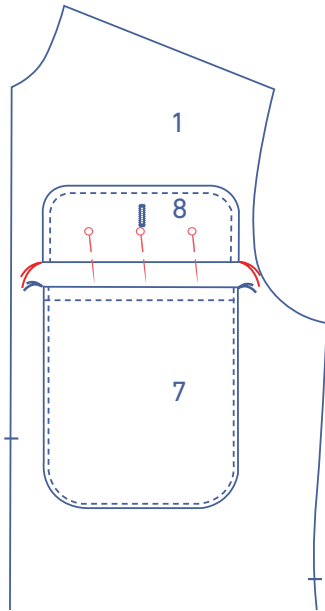
Turn the flap the right way out.



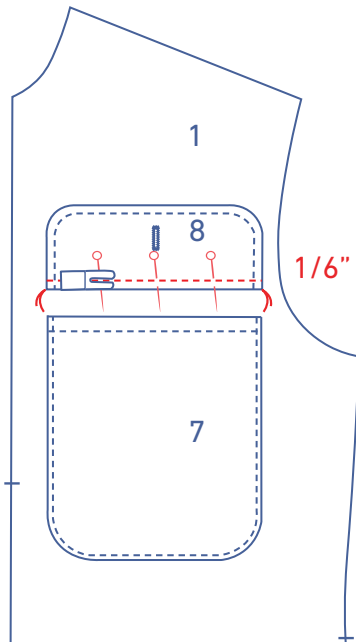
Topstitch at presser foot width from the edges where
indicated.



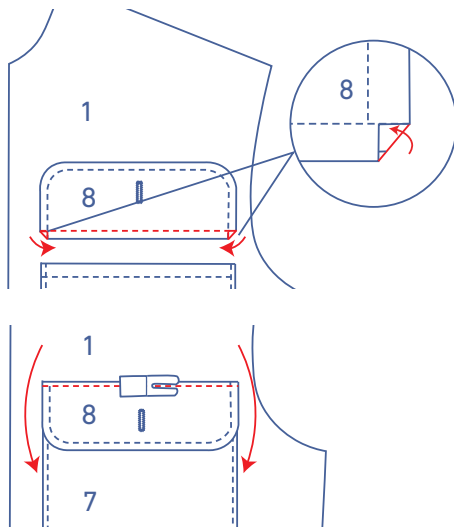
Make a vertical buttonhole where indicated.



Match the raw edges of the flap to the highlighted marking threads. The flap should be facing up.

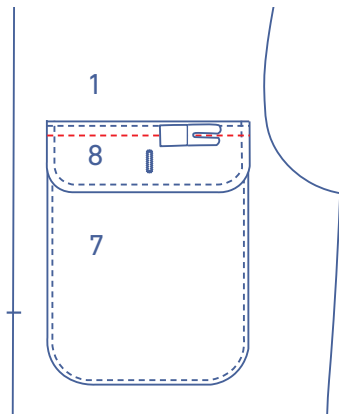


Sew into place at 1/6" from the raw edge.



Tuck the corners in and fold the flap down.

Sew into place right next to the edge.

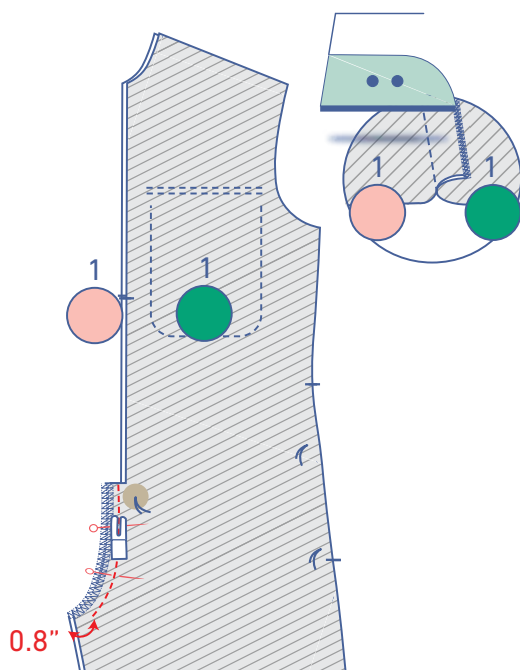
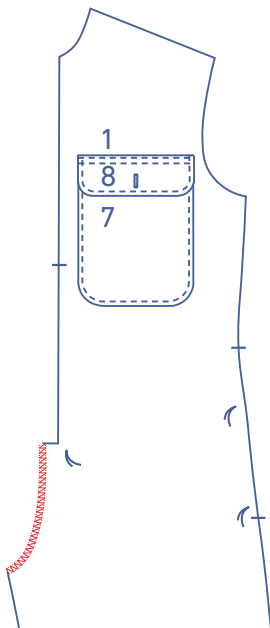


Add an extra line of topstitching at presser foot width from your previous stitching.

2

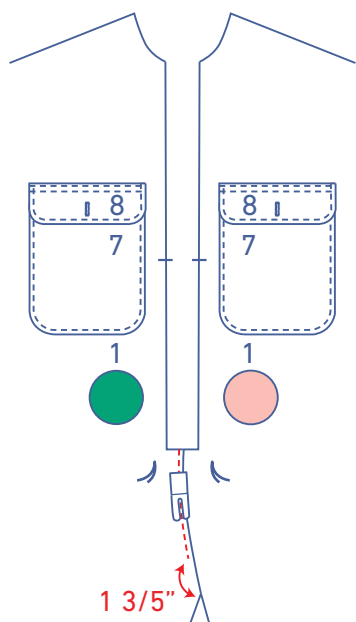
For the blouse and dress, skip this step and go directly to step 3.

Finish the raw edge of the front where indicated with overlock stitching.

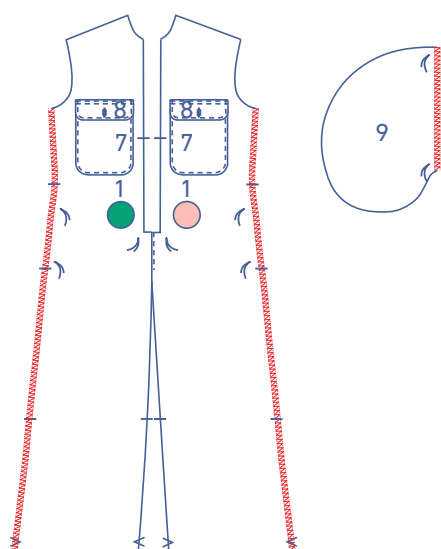


Pin the CF seam of the LF and RF together and sew at approx. 0.8" from the indicated edge.

Press the seam allowance towards the RF.

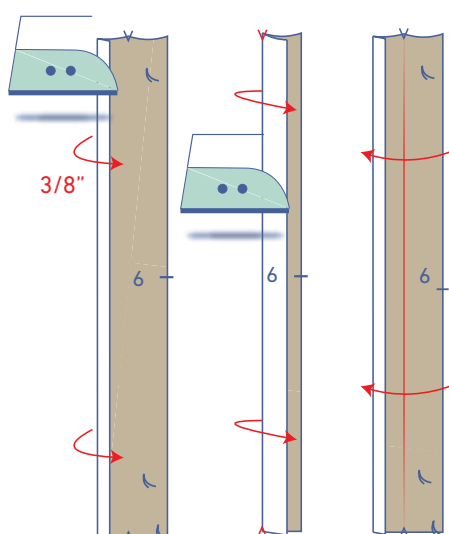


Topstitch the RF right next to the seam up to approx. 1 3/5" cm from the indicated edge.



3

Finish the indicated raw edges of the front and the straight ends of all pocket pieces (9) with overlock stitching.

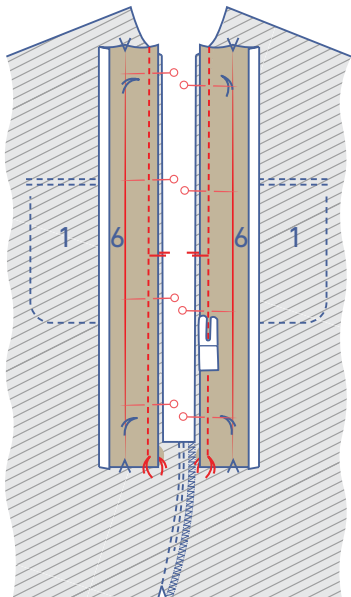


4

Press 3/8" of the unnotched long end of the button placket (6) towards the wrong side.

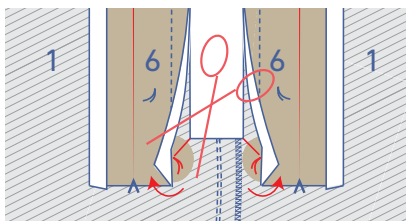
Fold the button placket in half at the V notches with the wrong sides of the fabric touching.

Open back out.

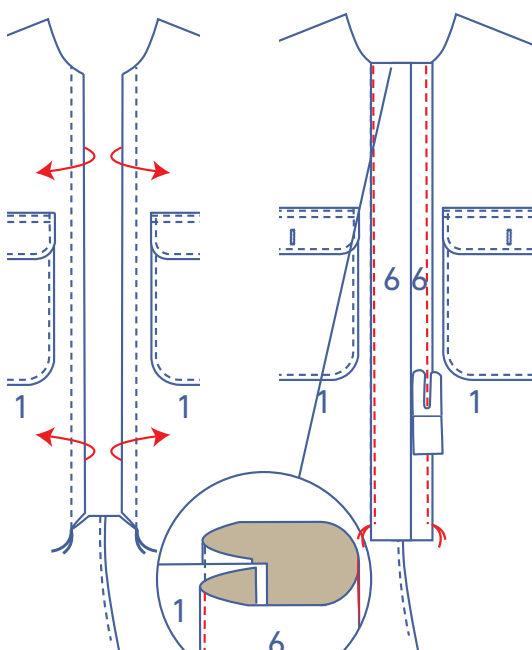
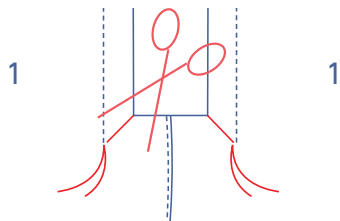


5

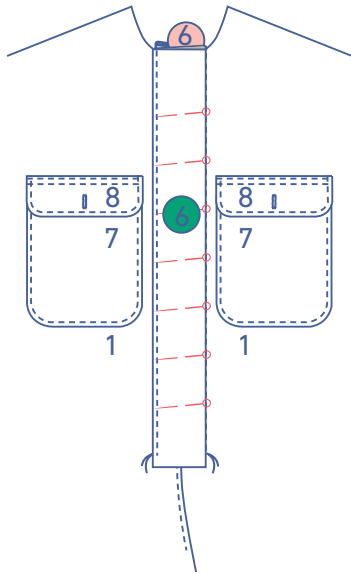
Pin each notched long end of the button placket to the wrong side of the front, matching the markings. Sew into place up to the marking threads at the bottom.



Fold the seam allowance at the bottom of the button placket out of the way so that you can diagonally snip into the seam allowance of the front until just before the marking threads.

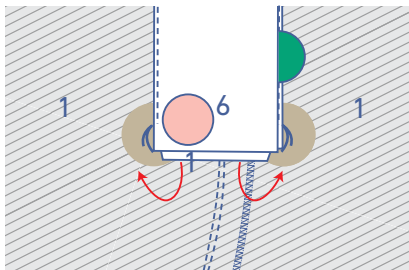


Place the front in front of you with the right side up and turn the plackets onto the right side of the front. Neatly match the fold line (of the pressed seam allowance) to your previous stitching. Sew into place right next to the edge up to the marking threads.

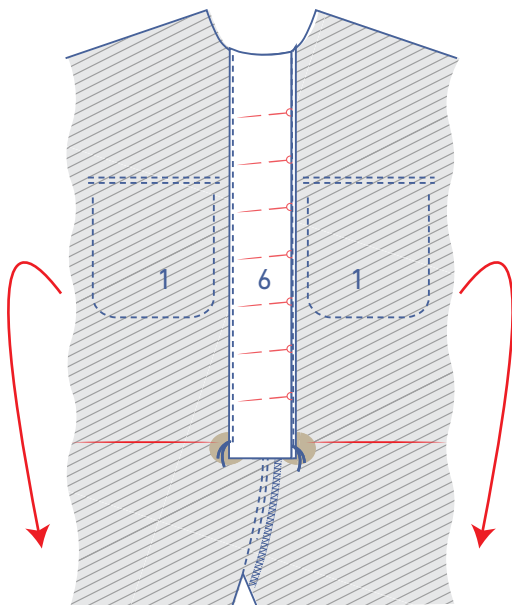


For the blouse. skip these steps and go directly to step 8.

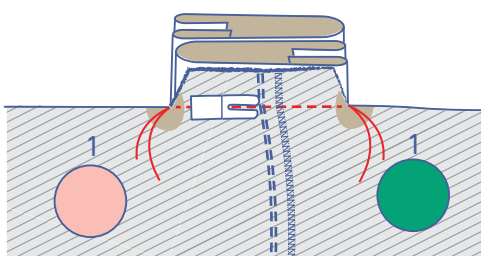
Neatly place the RF button placket on top of the LF button placket and pin them together.



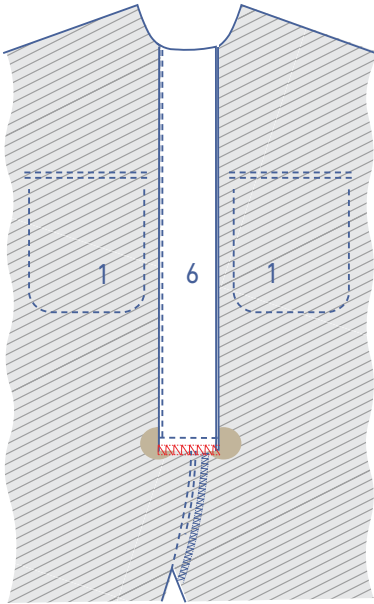
Tuck the seam allowance at the bottom of the button placket (= the bit under the marking threads) and front corner (= of the trimmed seam allowance) under to the wrong side.



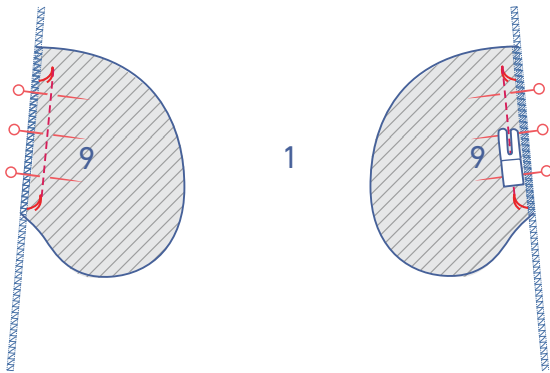
For easier access to the bottom of the button placket. fold the front over or up.



Sew all pieces (= both button placket pieces + the corner of the trimmed seam allowance of the front) together from one marking thread to the next.

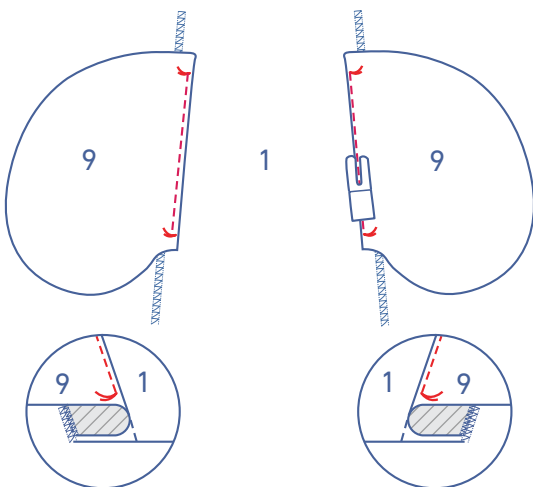


Finish the raw edges with overlock stitching.



6

Pin the straight ends of 2 of the 4 pocket pieces to the front, matching the marking threads. Sew into place between the marking threads.

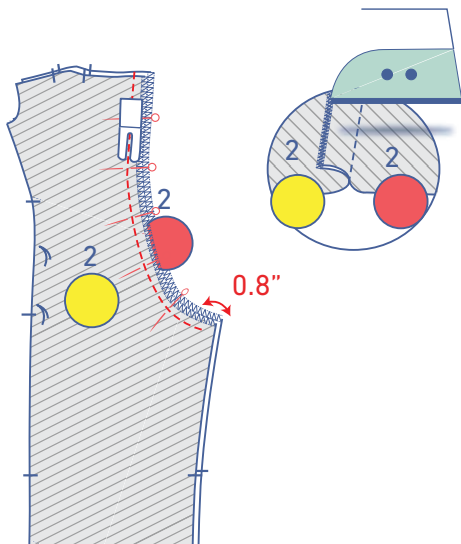
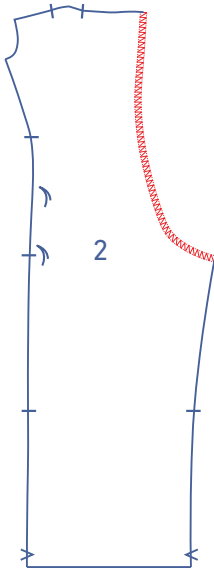


Fold the pocket and seam allowance over and sew the pocket to the seam allowance underneath right next to the seam.

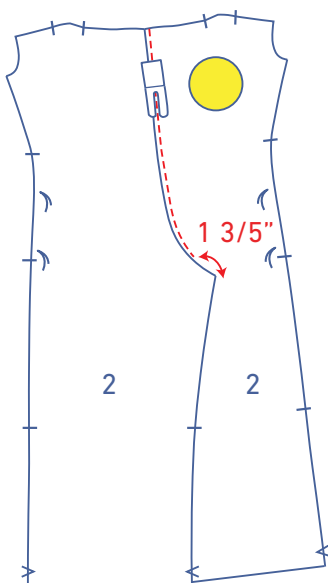
7

For the dress. skip these steps and go directly to step 8.

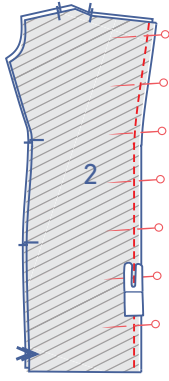
Finish the edges of the back (2) with overlock stitching where indicated.



Pin the CB seam into place and sew until approx. 0,8" from the indicated edge. Press the seam allowance towards the RB.



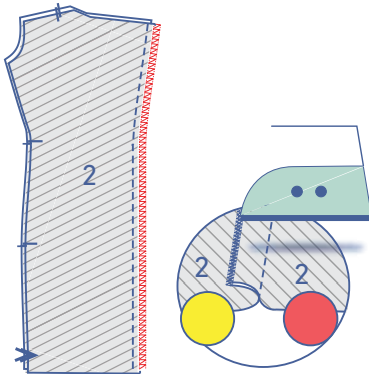
Topstitch the RB right next to the seam up to approx. 1 3/5" from the edge.



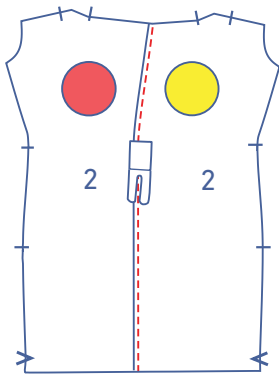
8

For the jumpsuit and playsuit, skip these steps and go directly to step 9.

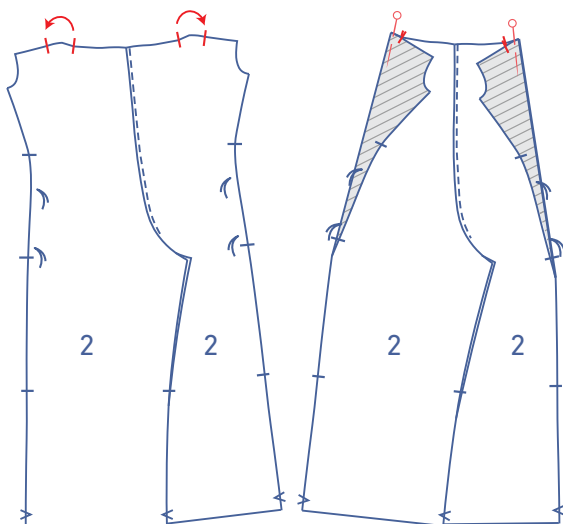
Pin and sew the CB seams of the back (2) together.



Finish the raw edges with overlock stitching and press the seam allowance towards the RB.

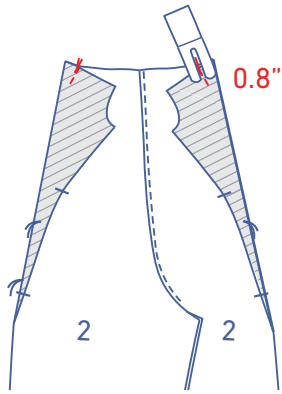


Topstitch the RB right next to the seam.

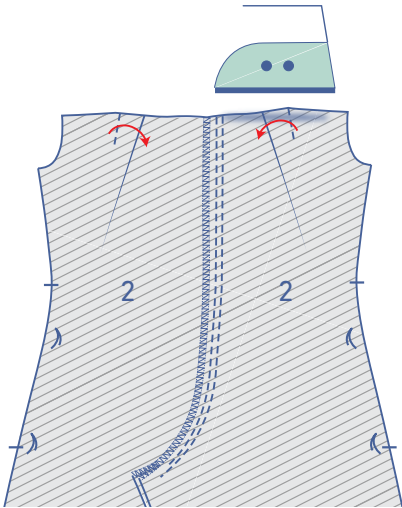


9

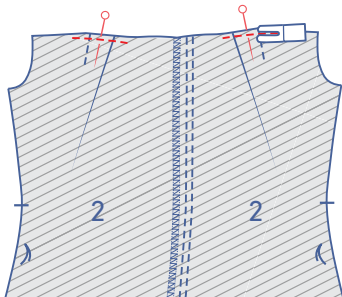
Make the pleats in the back by matching all notches in the direction indicated.



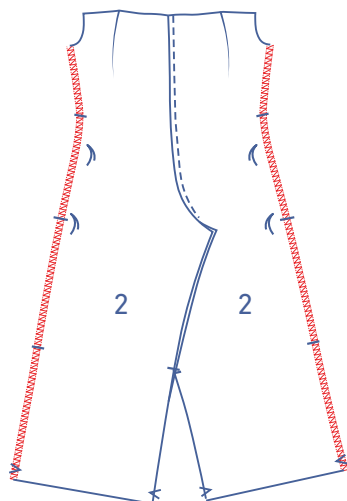
Vertically sew the pleats into place (approx. 0.8").



Press the pleat allowance towards the CB.

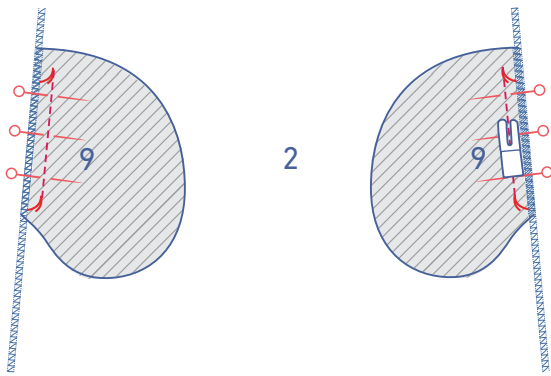


Pin and sew the pleats into place at presser foot width from the edge.



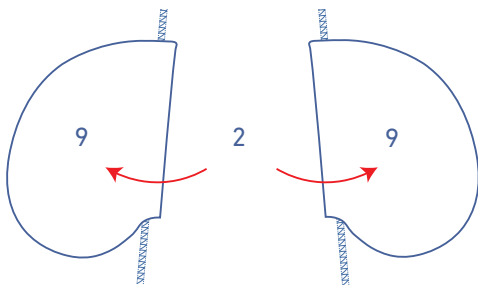
10

Finish the edges of the back with overlock stitching where indicated.

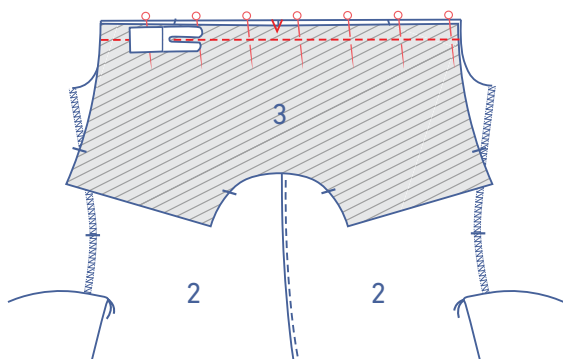


For the blouse, skip these steps and go directly to step 11.

Pin the straight ends of the two remaining pocket pieces to the back, matching the marking threads. Sew into place between the marking threads.

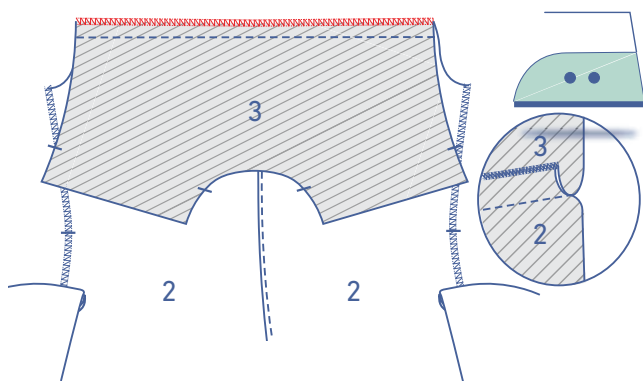


Fold the pocket pieces over.

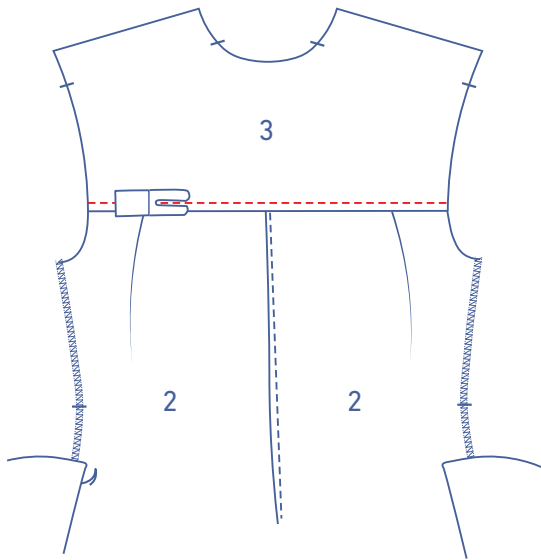


11

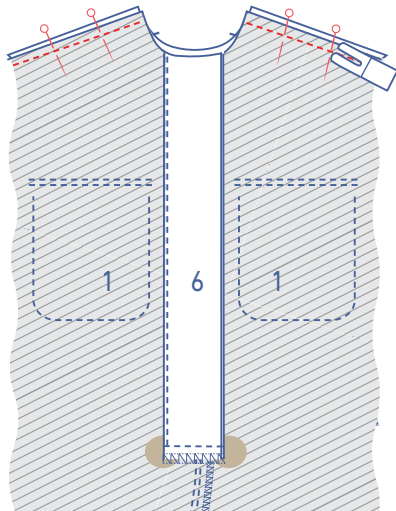
Pin and sew the yoke (3) and back together. The V notch marking the centre of the yoke should line up with the CB seam.



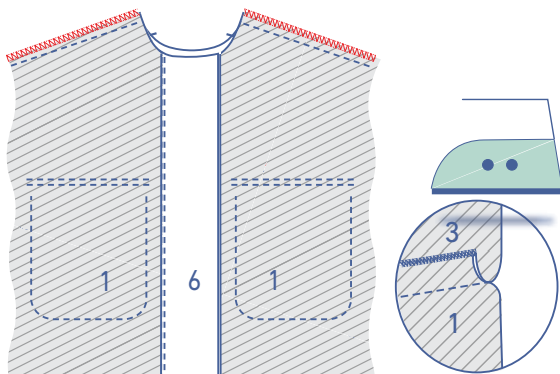
Finish the raw edges with overlock stitching and press the seam allowance towards the yoke.



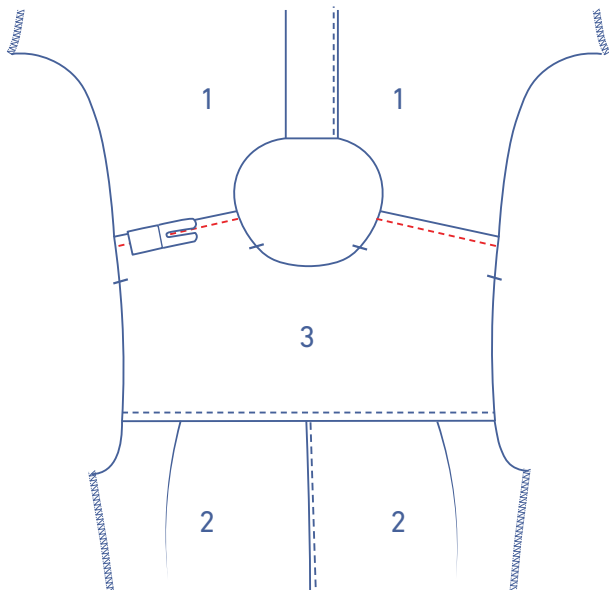
Topstitch the yoke at presser foot width from the seam.



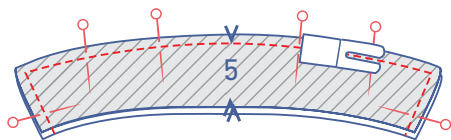
Pin the shoulder seams of the yoke and front together and sew.



Finish the raw edges with overlock stitching and press the seam allowance towards the yoke.

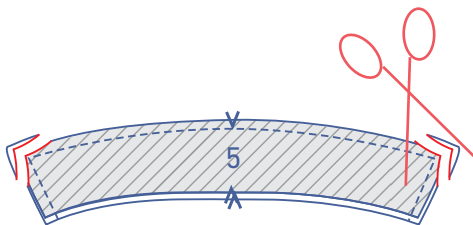


Topstitch the yoke at presser foot width from the seam.

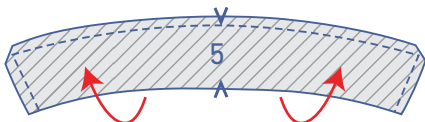


12

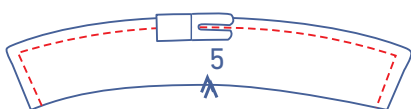
Pin and sew the contours of the collars (5) together, leaving the bottom open.



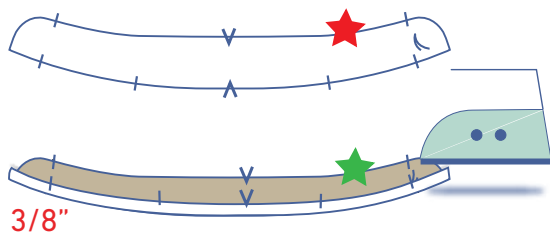
Trim the seam allowance at the corners.



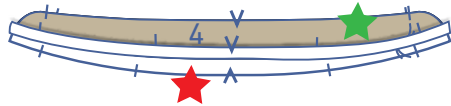
Turn the collar the right way out.



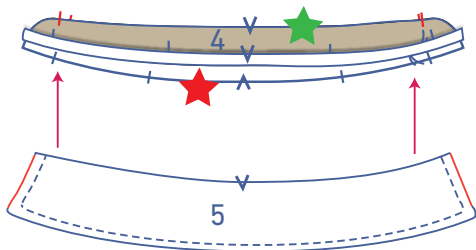
Topstitch all the way around at presser foot width from the edge.



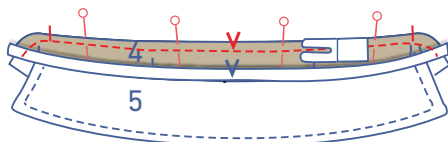
Press $\frac{3}{8}$ " of one of the two collar bands (4) over at the bottom towards the wrong side. We've marked this collar band with a green star, while the unpressed collar band is marked with a red star.



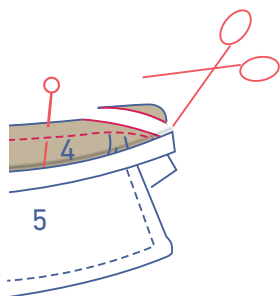
Stack both collar bands with the right sides facing each other. The collar band with the pressed bottom (green star) should be on top.



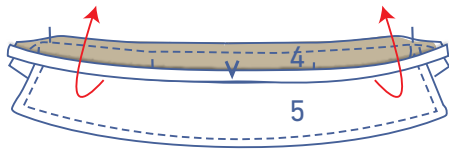
Slide the collar between the two collar bands and match the raw edges of the collar band and collar. The finished edges of the collar should line up with the single notches in the collar band.



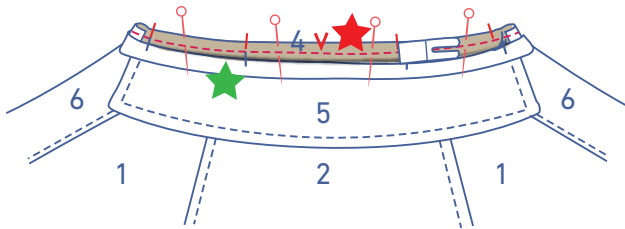
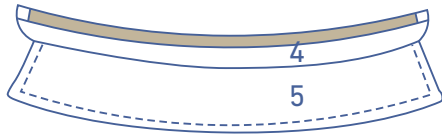
Pin and sew the pieces together.



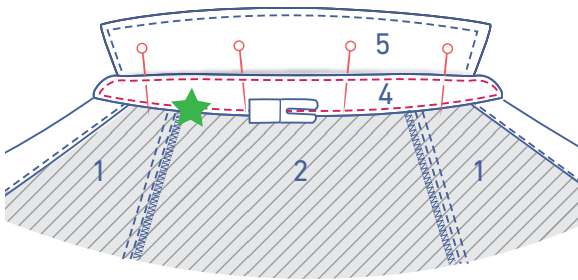
Trim the seam allowance to avoid bunching.



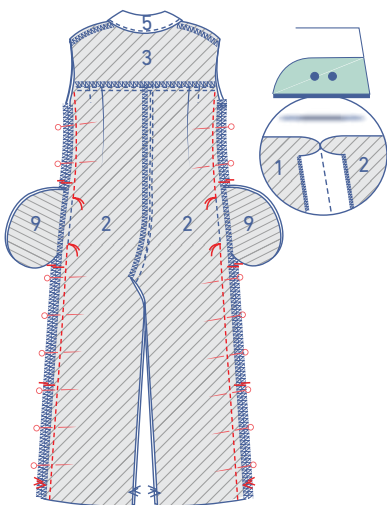
Open the collar bands back out so that the wrong sides of the fabric are facing again.



Pin and sew the unpressed bottom of the collar band (red star) to the neckline along the right side of the garment.



Fold the collar band with the pressed bottom (green star) towards the wrong side of the neckline. The fold line should be directly on top of the previous stitching. Pin and sew into place. Sew the rest of the collar band into place.

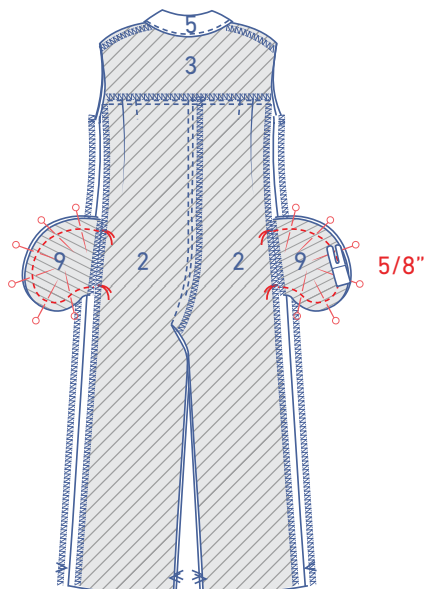


13

Pin and sew the side seams of the front and back together. Press the seam allowance open.

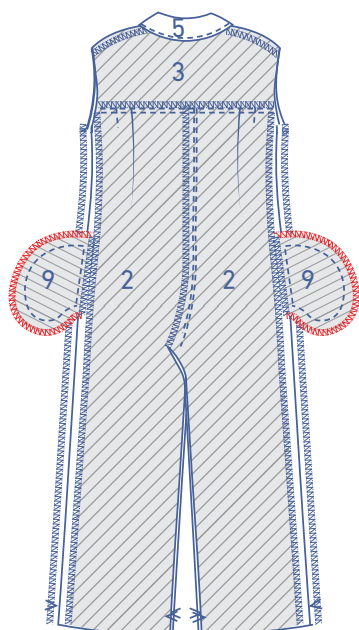
For the jumpsuit, playsuit, and dress, that means sewing up to the marking threads that mark the top of the pocket opening and then sewing from the next set of marking threads to the hem.

For the blouse, there are no marking threads for the pocket to take into account.

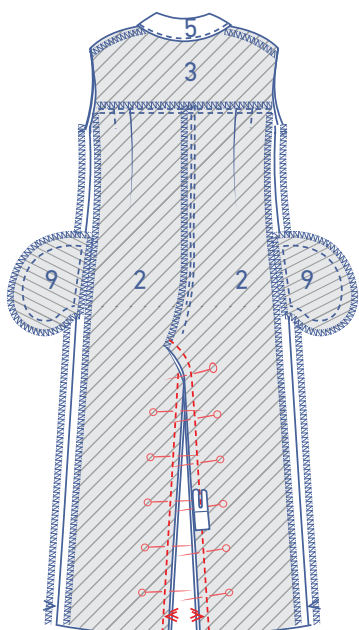


For the blouse. skip these steps and go directly to step 15.

Pin and sew the contours of the pocket pieces together at $\frac{5}{8}$ ".



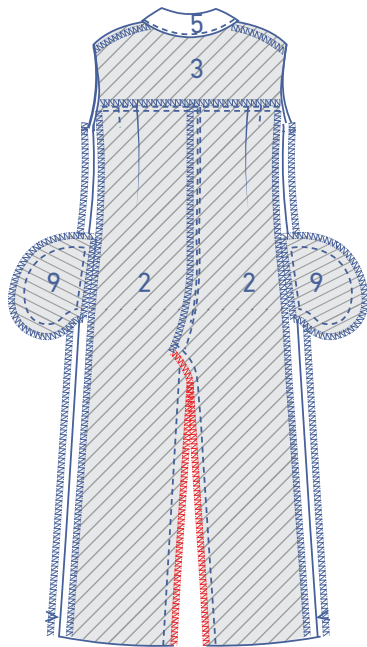
Finish the raw edges with overlock stitching.



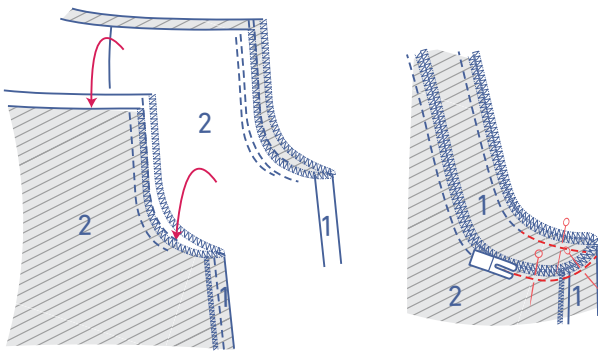
14

For the dress. skip these steps and go directly to step 15.

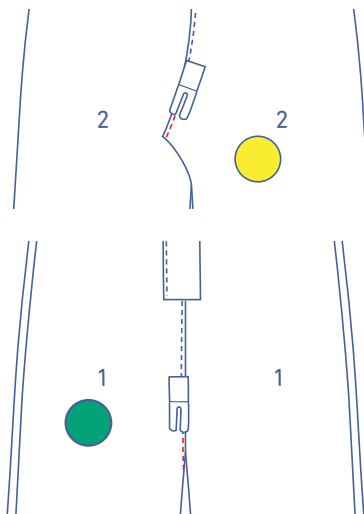
Pin and sew the inseams of both trouser legs.



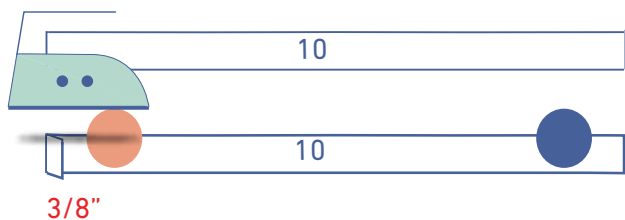
Finish the raw edges with overlock stitching.



Slide both trouser legs into each other with the right sides touching. Pin the remaining bit of crotch seam together and sew.

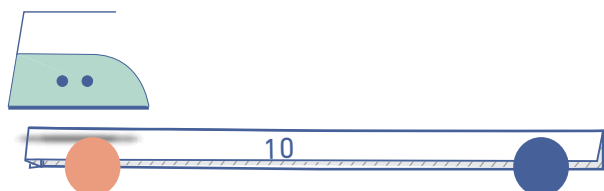


Finish topstitching the RF and RB at presser foot width from the crotch seam.

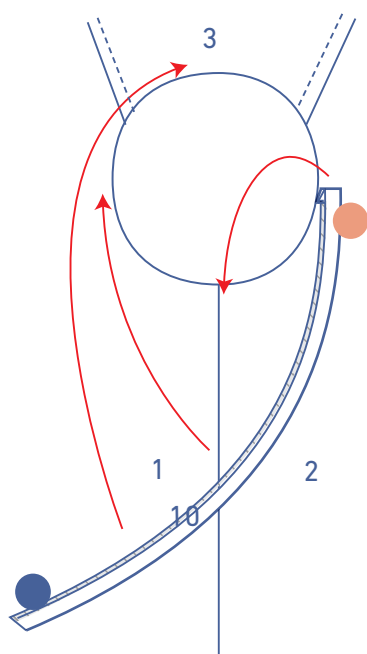


15

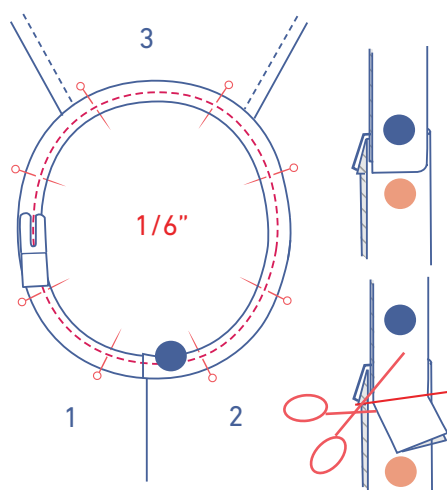
Press $\frac{3}{8}$ " of one short end of the bias tape (10) towards the wrong side. We've marked this pressed end with an orange circle. The unpressed short end has been marked with a blue circle.



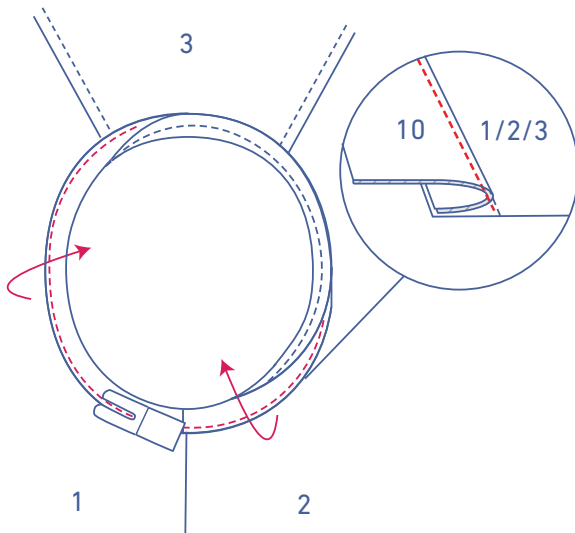
Press the bias tape in half with the long ends touching and the wrong sides of the bias tape facing each other.



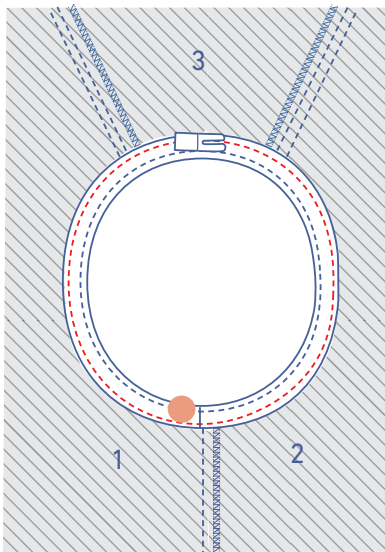
Pin both raw edges of the bias tape to the armhole along the right side of the garment. The folded end (orange circle) should match the underarm seam.



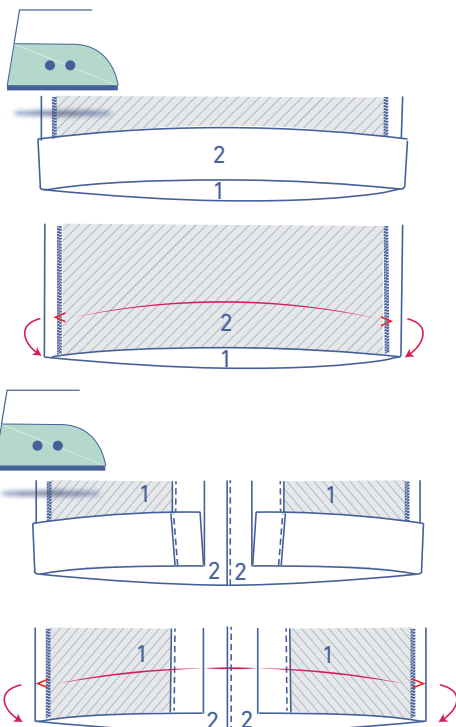
The unfolded end (blue circle) of the bias tape should be on top of the folded end. Trim any excess bias tape (the exact length is not provided because the grainline is on the bias. i.e. every fabric type is different). Sew into place at $\frac{1}{6}$ " from the raw edge.



Fold the bias tape and seam allowance over and sew the bias tape to the seam allowance underneath, right next to the seam.



Fold the bias tape all the way over to the wrong side and edgestitch into place.

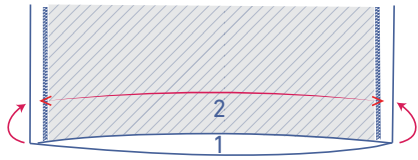


16

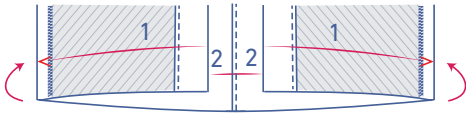
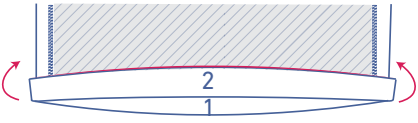
Press the hem allowance of the jumpsuit/playsuit/dress over at the V notches and open back out.

OR

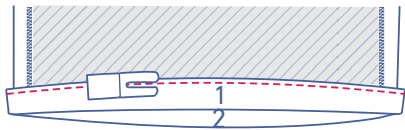
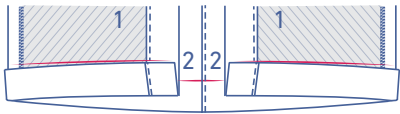
Press the hem allowance of the blouse over at the V notches and open back out.



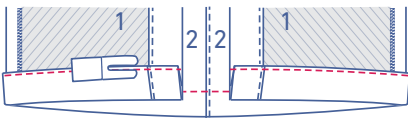
Fold the raw edge to the jumpsuit/playsuit/dress to meet the pressed fold line and fold over again.



Fold the raw edge of the blouse to meet the pressed fold line and fold over again.

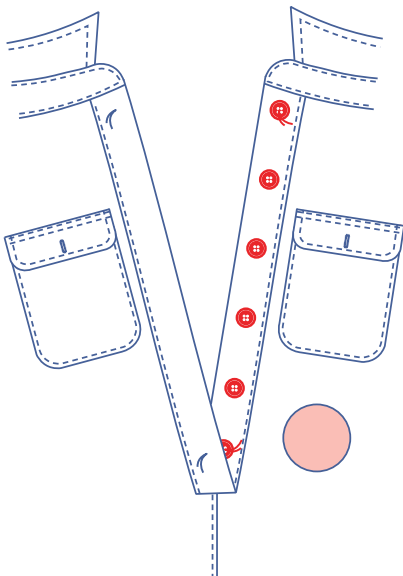


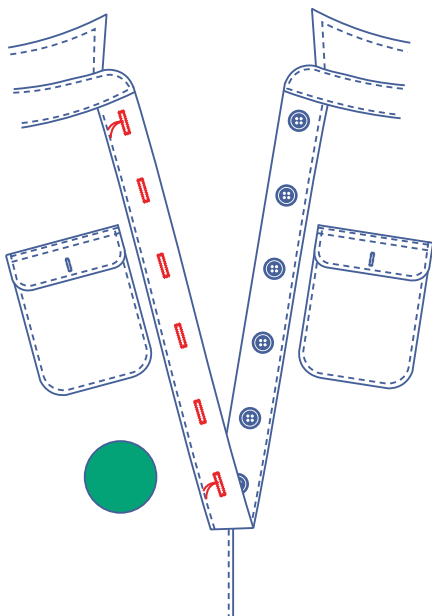
Sew into place.



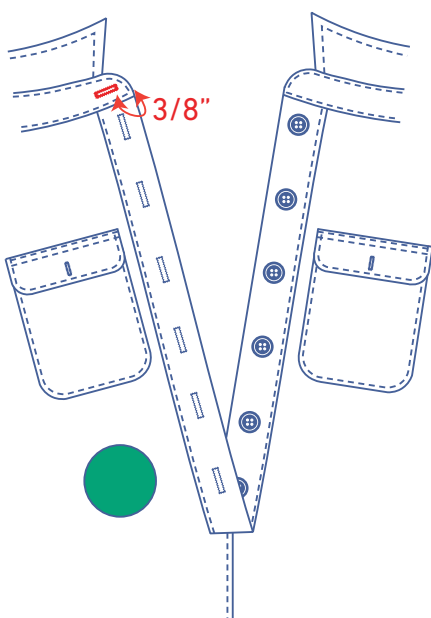
17

Sew the buttons onto the LF. The top and bottom button locations have been marked on the pattern for you. Evenly divide the distance between them to determine the location of the other buttons.

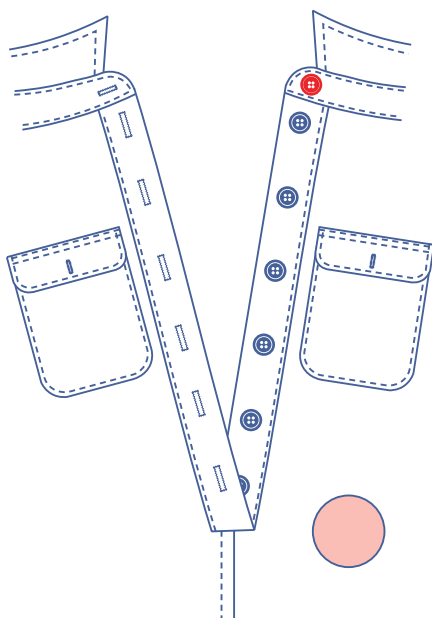




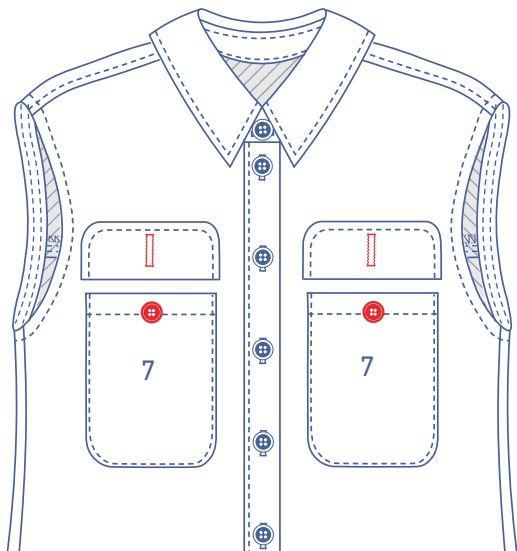
Make vertical buttonholes in the RF to match the buttons.



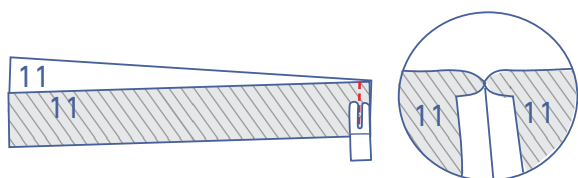
Make a horizontal buttonhole on the right side of the collar halfway up at $\frac{3}{8}$ " from the finished edge.



Sew a button to match on the other side.



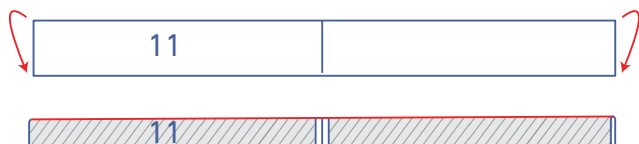
Sew buttons to the chest pockets to match the buttonholes in the flaps.



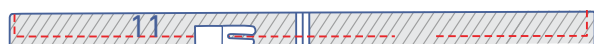
18

Optional

Pin and sew the CB seam of the belt pieces (11) together. Press the seam allowance open.



First, open the belt all the way out. Then fold it in half with the long ends touching and the right sides of the fabric facing each other.



Sew the ends together where indicated, but leave an opening to turn the belt the right way out again.



Turn the belt the right way out and sew the opening closed.



Topstitch the entire length of the belt with parallel, presser foot-width lines.