

Tilda by Fibre ⚡ood

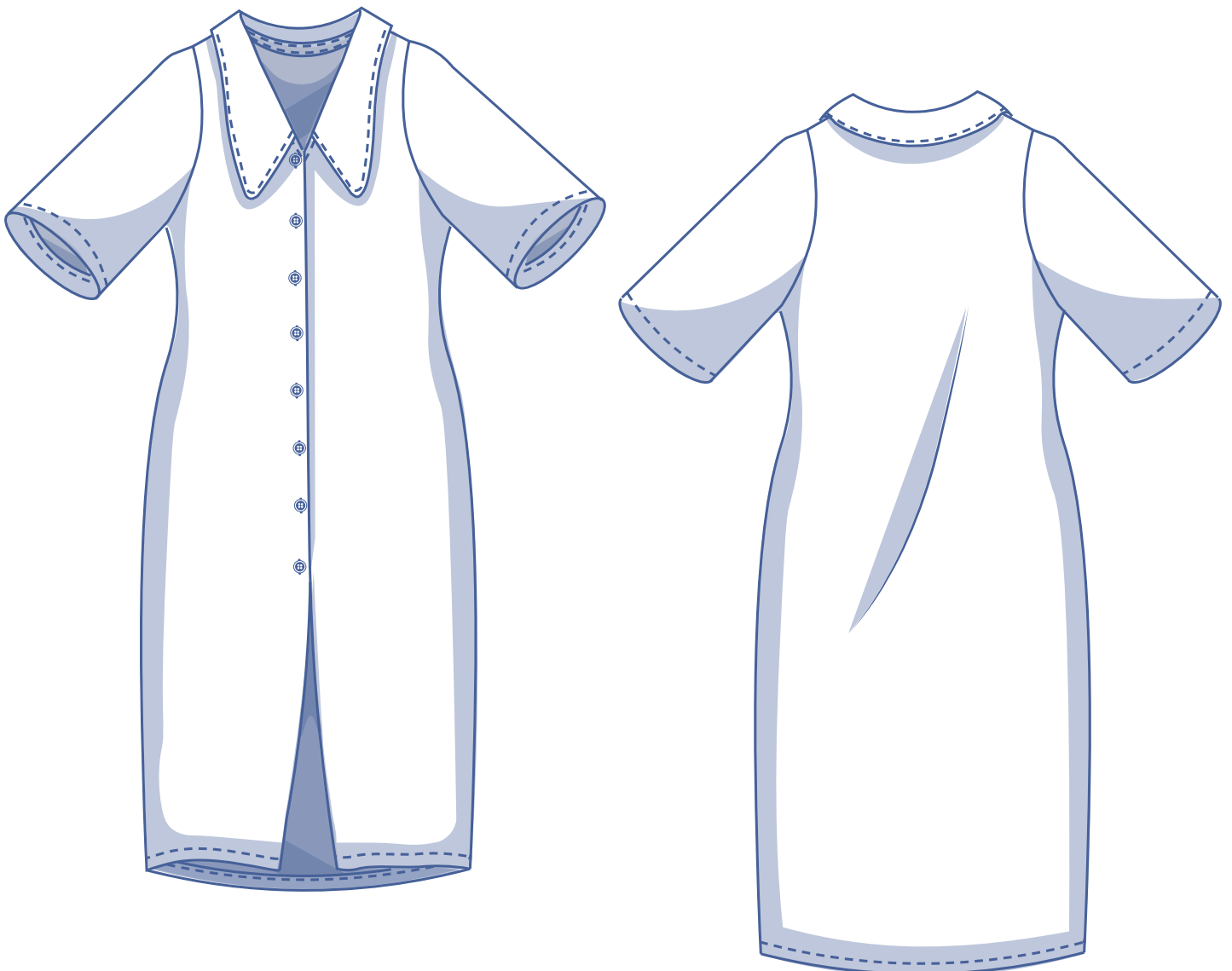


Tilda by Fibre Mood



4 - 32

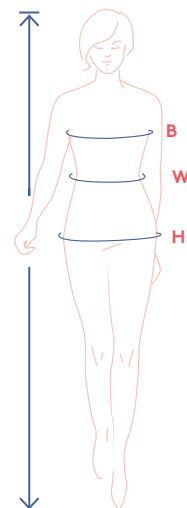
Tilda is an understated shirtdress that's practical and trendy to a tee, with a button closure and plain, set-in short sleeves. The fairy dust to Tilda's straight cut and relaxed waist is the collar. Embrace your imagination; add a layer of ruffled fabric or lace trim between the collars or go for a simpler look and omit the collar altogether.



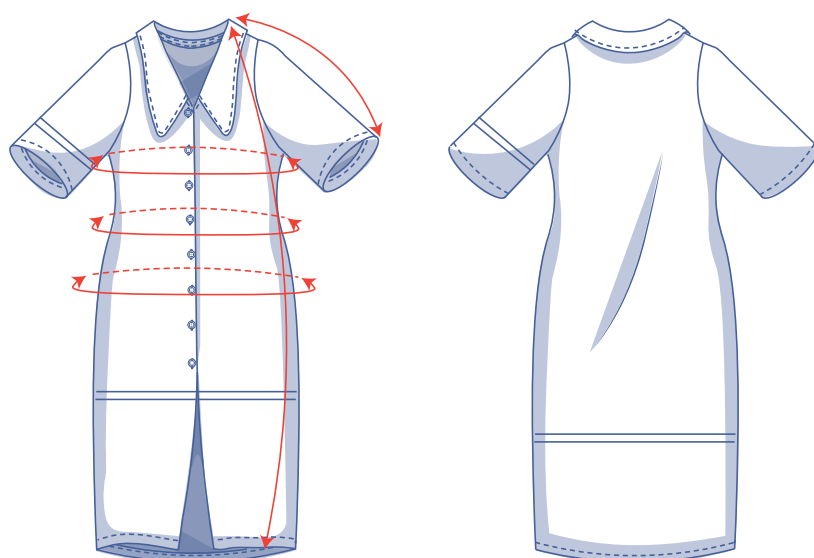
size chart (in inches)

size	0	2	4	6	8	10	12	14	16	18	20	22	24	26	28
H (height)	5'25"	5'38"	5'45"	5'48"	5'51"	5'54"	5'58"	5'61"	5'64"	5'64"	5'64"	5'64"	5'64"	5'64"	5'64"
B (bust)	29.9	31.5	33.1	34.6	36.2	37.8	39.4	40.9	43.3	45.7	48	50.4	52.8	55.1	57.5
W (waist)	26	26.8	27.6	29.1	30.7	32.3	33.1	34.6	37.2	39.8	42.3	44.9	47.4	50	52.6
H (hips)	33.9	35.4	37	38.2	39.4	40.6	41.7	42.9	45.3	47.2	49.2	51.2	53.1	55.1	57.1

Choose your size based on your **bust measurement**. If your waist and hip measurements are wider than those in the size chart, check the size chart below to see if there is enough room or whether the pattern needs to be altered. It's easy to do. Simply trace the line of the one size instead of the other.



pattern measurements (in inches)



— shorten or lengthen the pattern here

This chart's measurements are the pattern measurements based on the fabric type and serve as a reference. Ease has been added to the width measurements (in addition to the exact body measurements) for a more comfortable fit. Tilda is designed to have a **relaxed** cut.

size	0	2	4	6	8	10	12	14	16	18	20	22	24	26	28
length	46.8	47.1	47.3	47.5	47.7	47.9	48.9	49.1	50.6	51.0	51.3	51.6	51.9	52.2	52.5
sleeve length*	17	16.8	17	17.2	17.5	17.7	18	18.2	19	19.3	19.6	19.9	20.2	20.5	20.8
bust	33.7	35.3	36.8	38.4	40	41.5	43.1	44.7	47.1	49.4	51.8	54.1	56.5	58.9	61.2
waist	32.3	33.1	33.9	35.4	37.0	38.6	39.4	40.9	43.5	46.1	48.6	51.2	53.7	56.3	58.9
hips	35.8	37.3	38.9	40.1	41.3	42.5	43.6	44.8	47.2	49.2	51.1	53.1	55.1	57	59

* Including shoulder length.

Compare the stated lengths to the measured or desired lengths. **Lengthen** or **shorten** the dress and/or the sleeves by cutting the pattern pieces at the indicated double lines. Then either increase the distance between the cut pieces by the desired amount (to lengthen) or overlap the pieces (to shorten). Make sure that the CF and CB lines and the side seams are always straight.



IMPORTANT

Adjust the amount of fabric to be used based on these alterations.

notions



- Thread
- Iron-on interfacing: max. 1/4 yd
- Buttons (Ø 5/8"): see table
- Fabric: see table

buttons	0	2	4	6	8	10	12	14	16	18	20	22	24	26	28
	8	8	8	8	8	8	8	8	9	9	9	9	9	9	9

fabric		0	2	4	6	8	10	12	14	16	18	20	22	24	26	28
fabric width 43"	yd	2 1/2	3	3 1/4	3 1/2	3 1/2	3 1/2	3 3/4	3 3/4	4	4	4 1/2	4 1/2	4 3/4	4 3/4	4 3/4
fabric width 55"	yd	2 1/4	2 1/4	2 1/2	2 1/2	2 1/2	2 1/2	2 1/2	2 1/2	2 1/2	3 1/2	3 1/2	3 1/2	3 1/2	3 3/4	4

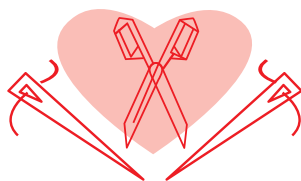
The corresponding fabric layout can be found on page 6 of these sewing instructions.

fabric advice



Tilda lends itself well to a variety of woven fabrics. For example, poplin, Tencel, linen, crepe, wool and wool blends, flannel, leather(ette), a nifty woven jacquard, etc. all work. This pattern is flexible and looks great in both solids and prints.

Proud to be #Sewista



pattern pieces & seam allowances (in inches)

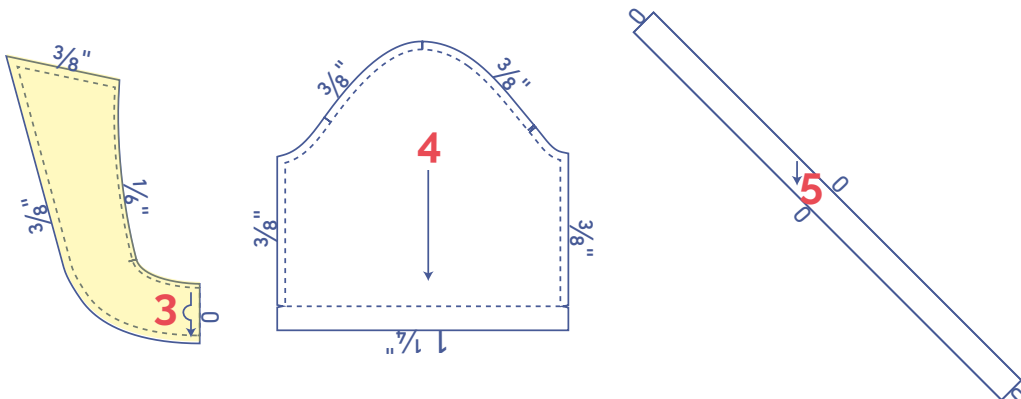
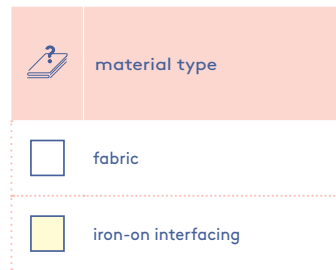
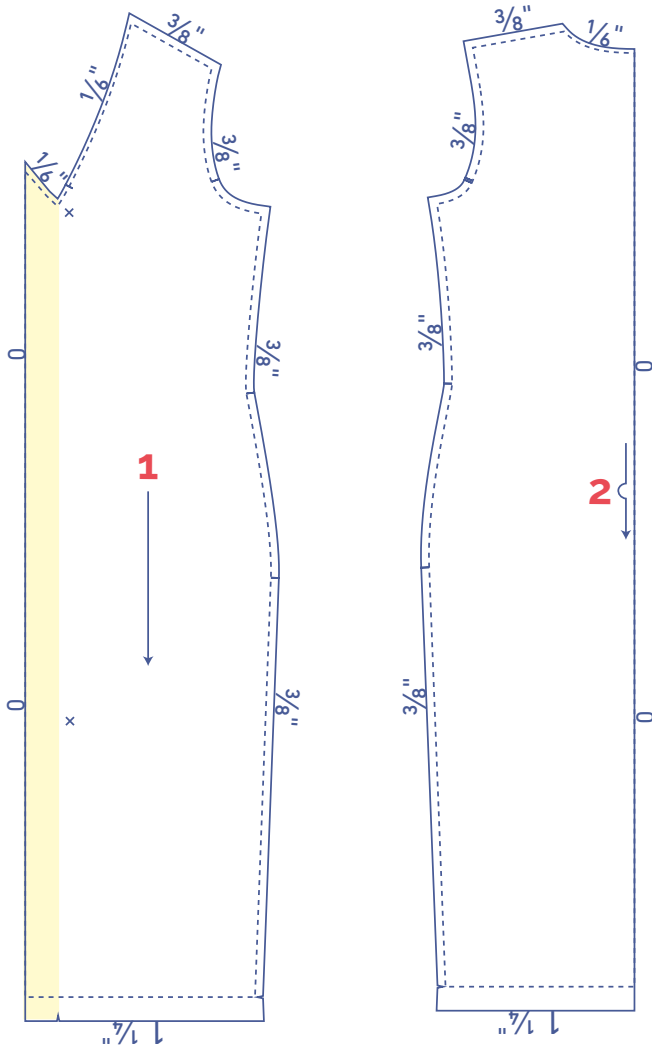
To sew the garment as described in the instructions, draw the illustrated seam allowances around the paper pattern pieces before cutting them out. If you are using a PDF pattern, the pattern can be printed with or without seam allowance.

To find out more, watch the [video](#).

1. front: 2x
2. back: 1x on fabric fold
3. collar: 2x on fabric fold
4. sleeve: 2x
5. bias tape: 1x

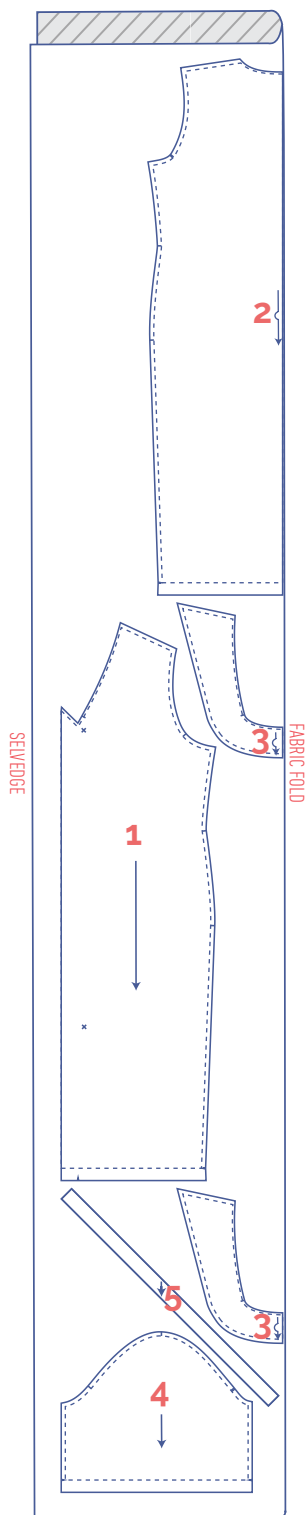
IMPORTANT

The pieces highlighted in light yellow have iron-on interfacing attached to the wrong side.



fabric layout – solid fabrics
fabric width 43"

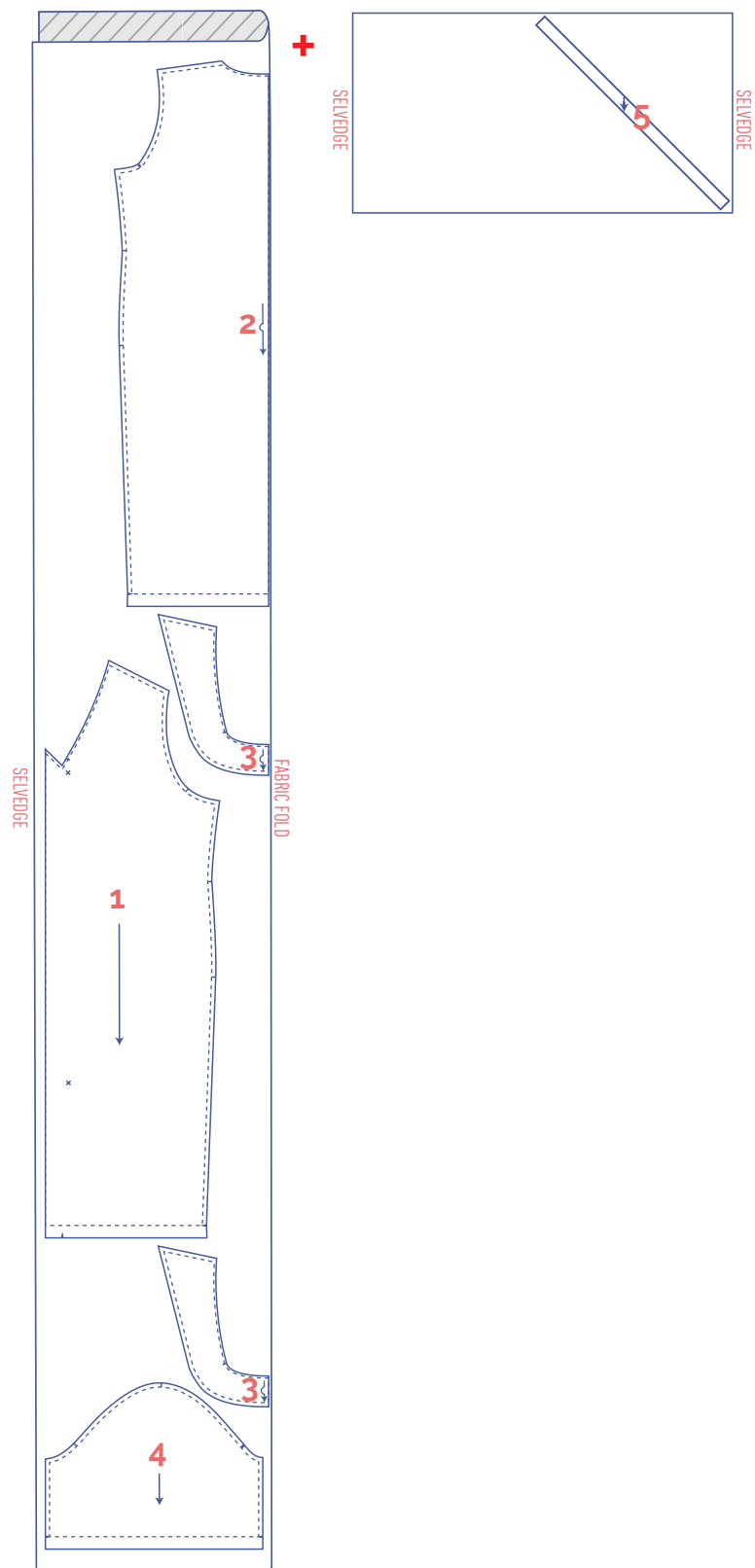
0 - 18

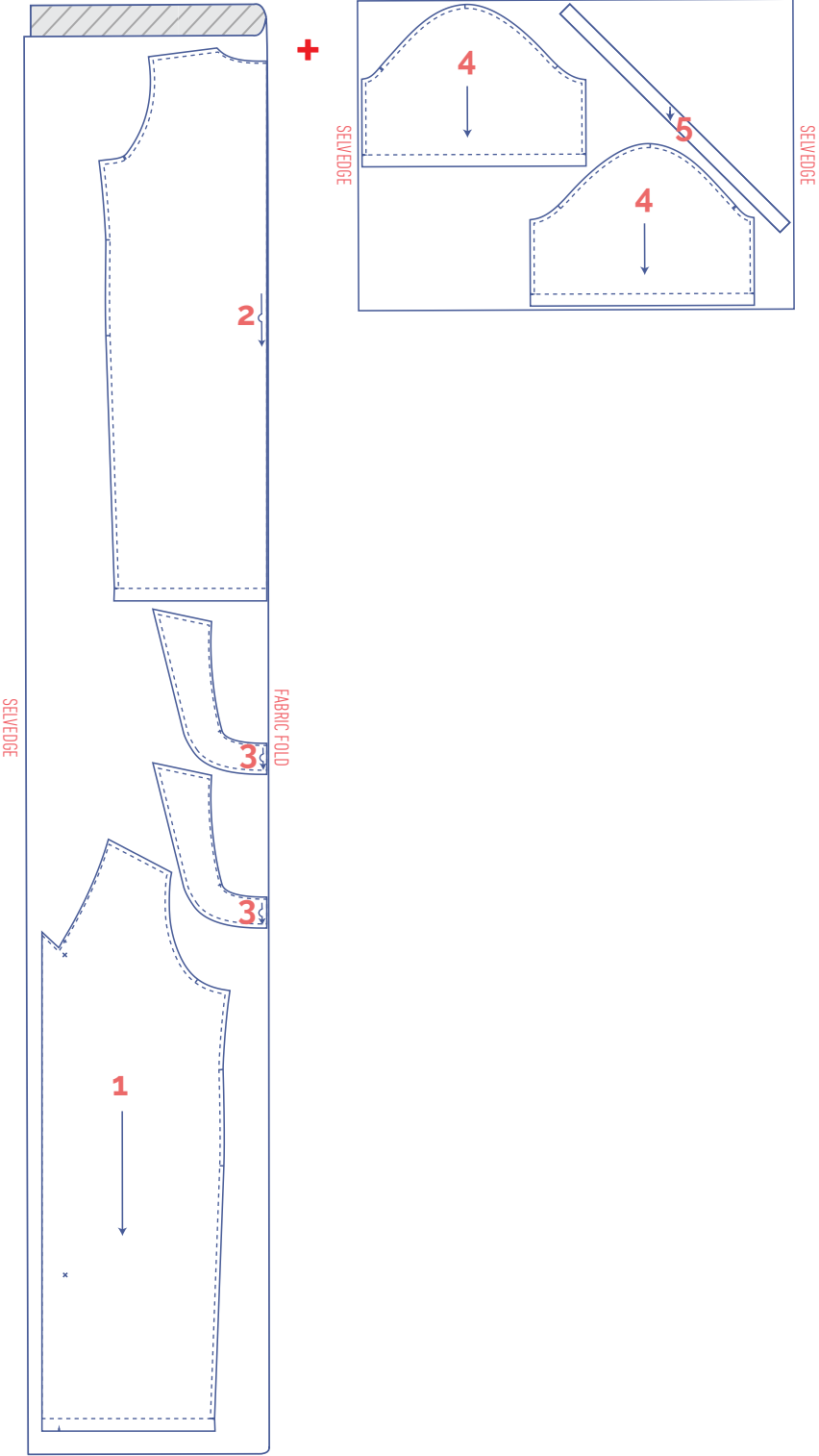


IMPORTANT

You only need pattern piece 5 once.

20 - 24

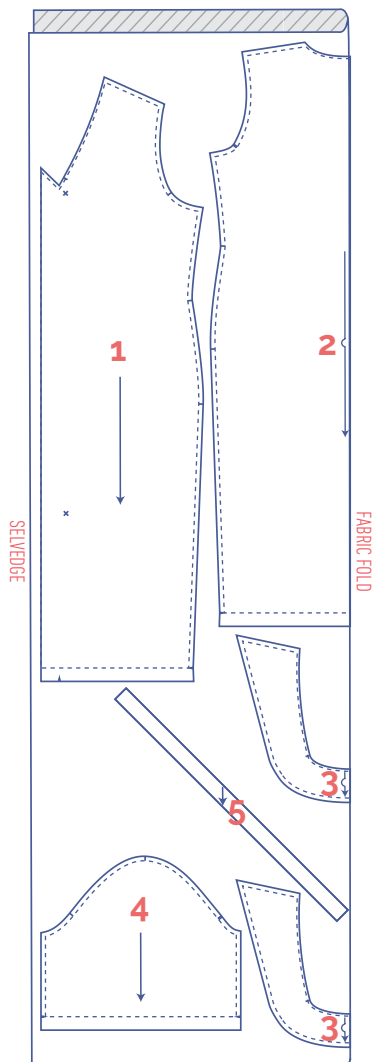




fabric layout – solid fabrics

fabric width 55"

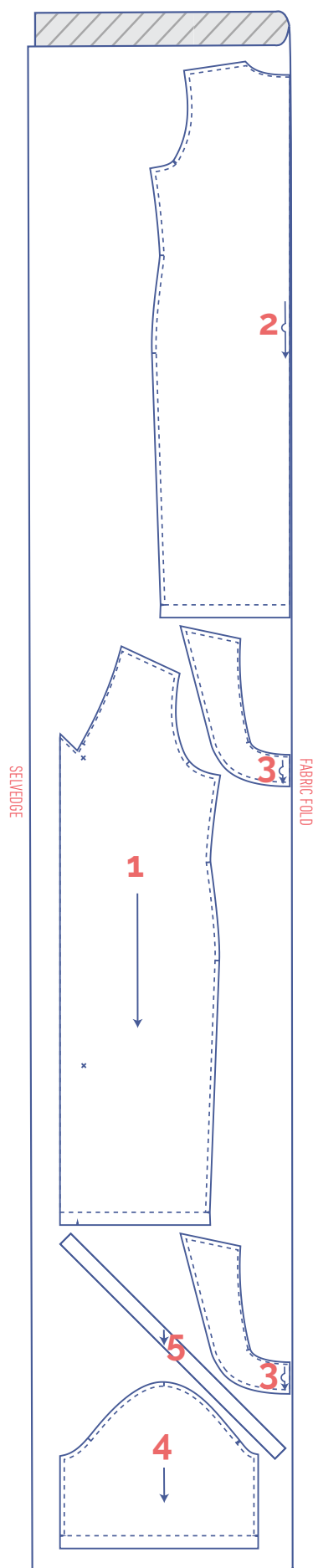
0 - 16



IMPORTANT

You only need pattern piece 5 once.

18 - 28



IMPORTANT

You only need pattern piece 5 once.

marking pattern pieces



Notch the pattern paper and fabric at the following points



single notch



double notch



V notch



Mark the following points using marking thread



snap/button

sewing instructions



The method used to finish the seams depends on the fabric used.
The pieces are always sewn together with the right sides of the fabric facing, unless stated otherwise.

F front

B back

RF right front ●

LF left front ●

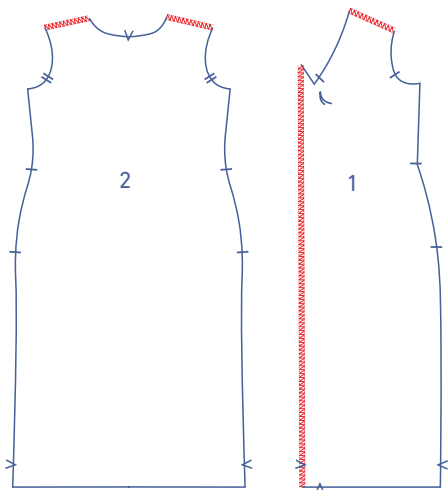
CF centre front

CB centre back

□ right side

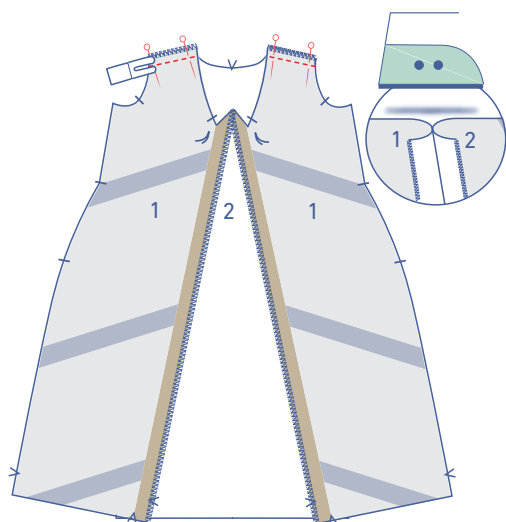
▨ wrong side

▤ iron-on interfacing

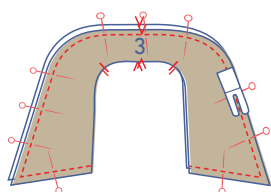


1

Finish the indicated edges of the front (1) and back (2) with overlock stitching.

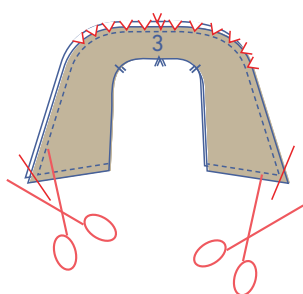


Pin and stitch the shoulder seams. Press the seam allowance open.

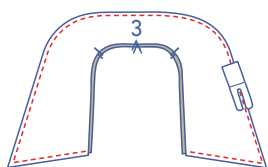


2

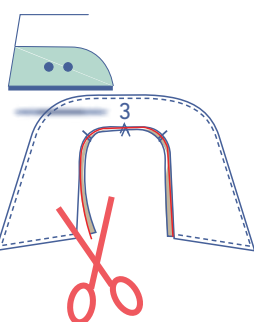
Pin and sew the outer contours of the collars (3) together as shown, except at the neckline.



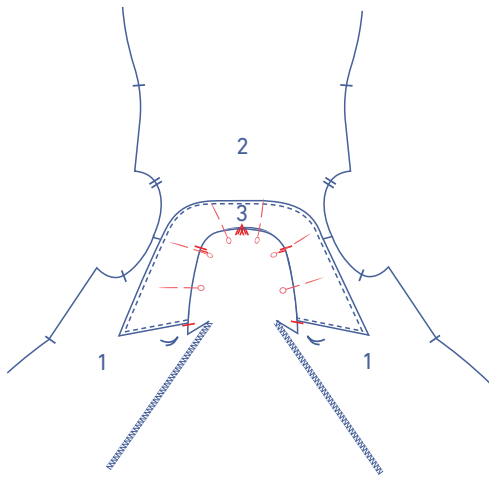
Grade the seam allowance at the corners. Notch the seam allowance in the curves.



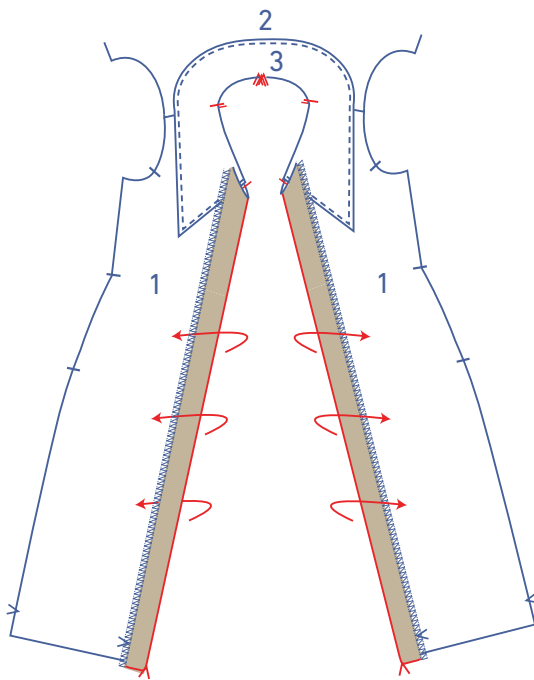
Turn the collar so that the wrong sides are touching and topstitch the contours right next to the edge.



Neatly press the collar flat. Trim excess fabric at the undercollar.

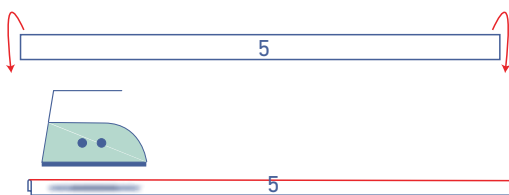


Pin the collar to the neckline along the right side of the garment. The finished edges of the collar align with the single notch in the front.

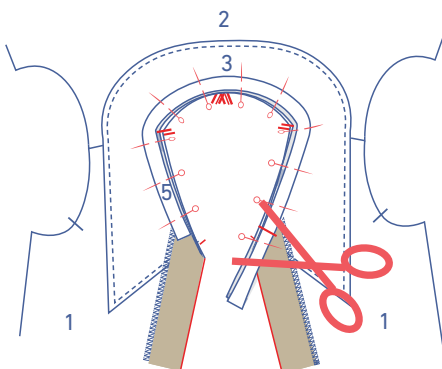


3

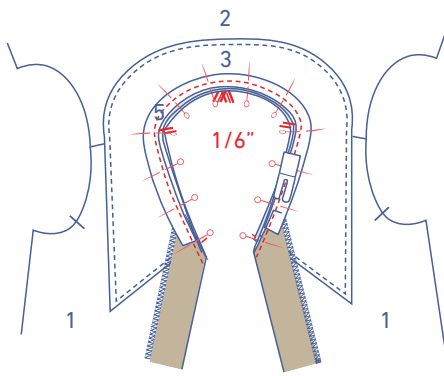
Fold the facing of the front over towards the right side of the fabric where indicated. The collar should be sandwiched between 2 layers of fabric.



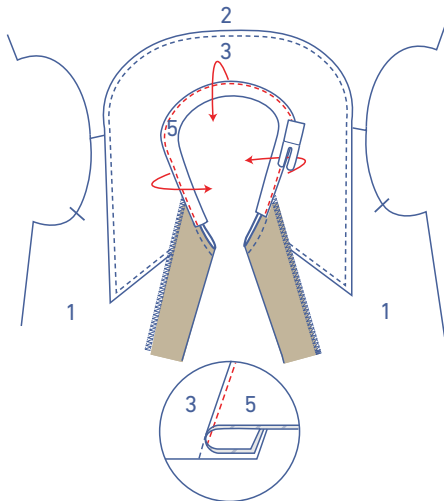
Fold the bias tape (5) in half with the long ends together and the wrong sides of the bias tape facing.



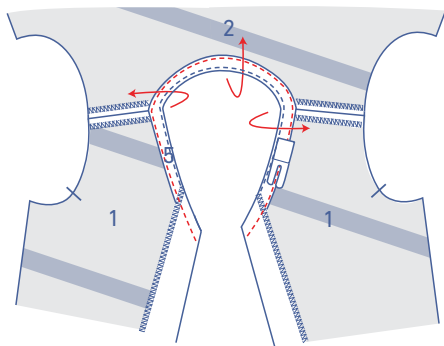
Pin the raw edges of the bias tape to the neckline, on top of the collar. The start and end of the bias tape should be on top of the folded facing pieces as shown. As every fabric behaves a little differently on the bias, you may end up with a little excess tape that needs to be trimmed.



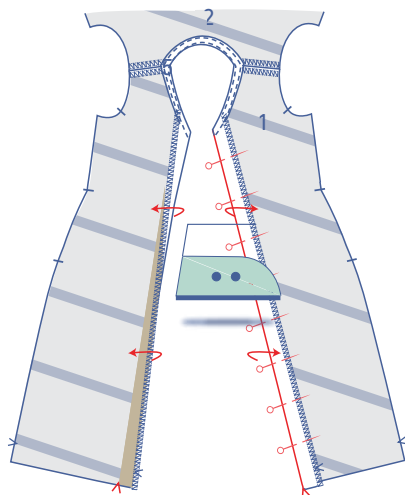
Sew the bias tape into place at $\frac{1}{6}$ " from the neckline.



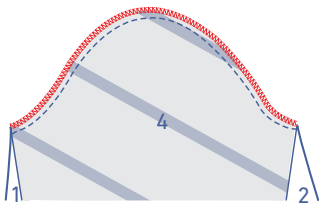
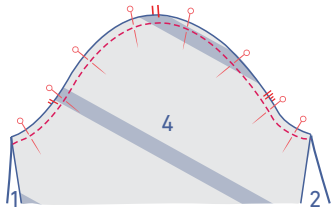
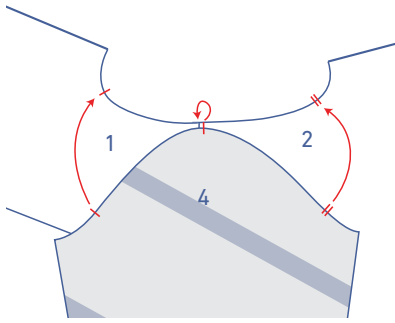
Fold the bias tape over and stitch to the seam allowance underneath, right next to the seam.



Fold the bias tape and the facing pieces over to the wrong side and edgestitch into place.



Neatly press the facing of the CF towards the wrong side at the V notches at the bottom and temporarily pin into place.



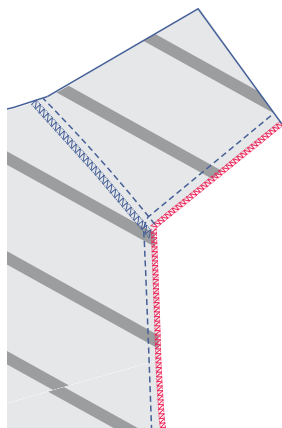
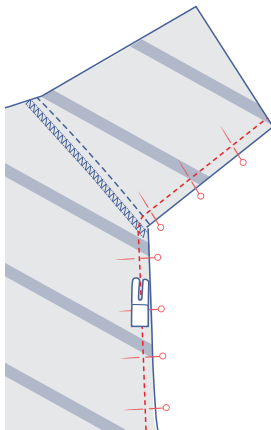
4

Pin the sleeve (4) to the armhole. The single notch marks the front, while the double notch marks the back. The single notch at the top aligns with the shoulder seam.

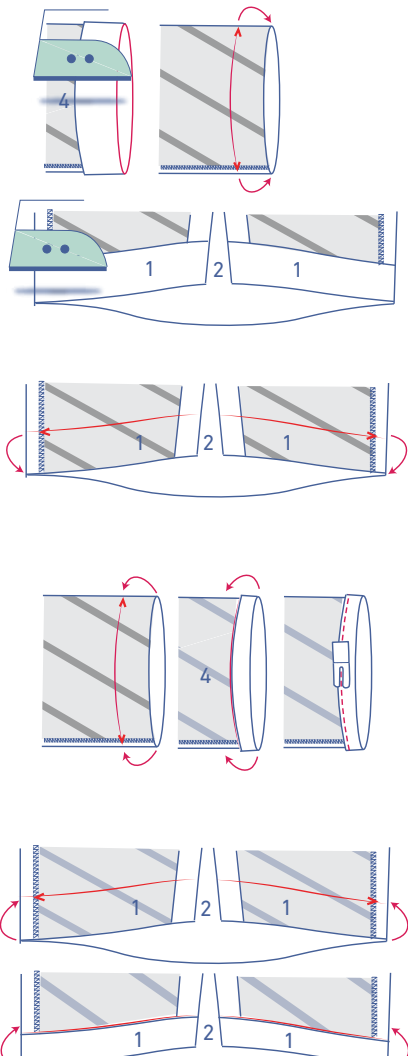
Finish the raw edges with overlock stitching.

5

Pin and sew the side and underarm seams.



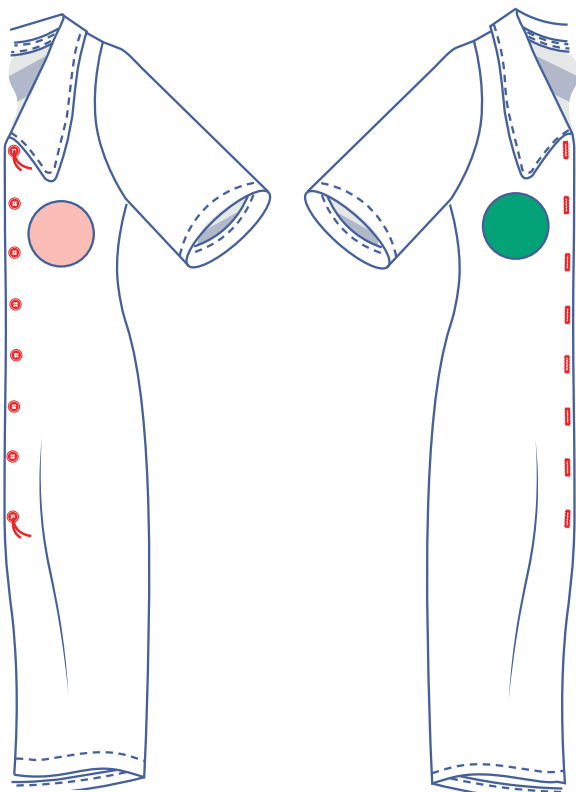
Finish the raw edges with overlock stitching.



6

Press the hem allowance of the dress and sleeves towards the wrong side and open back out.

Fold the raw edge to the pressed fold line and then fold up again. Edgestitch into place.



7

Sew the buttons onto the LF. The positions of the top and bottom buttons have been marked on the pattern for you. Divide the distance between them evenly to determine the location of the other buttons.

Make vertical buttonholes in the RF based on the location of the buttons.