

Josephine by Fibre ⚡ood

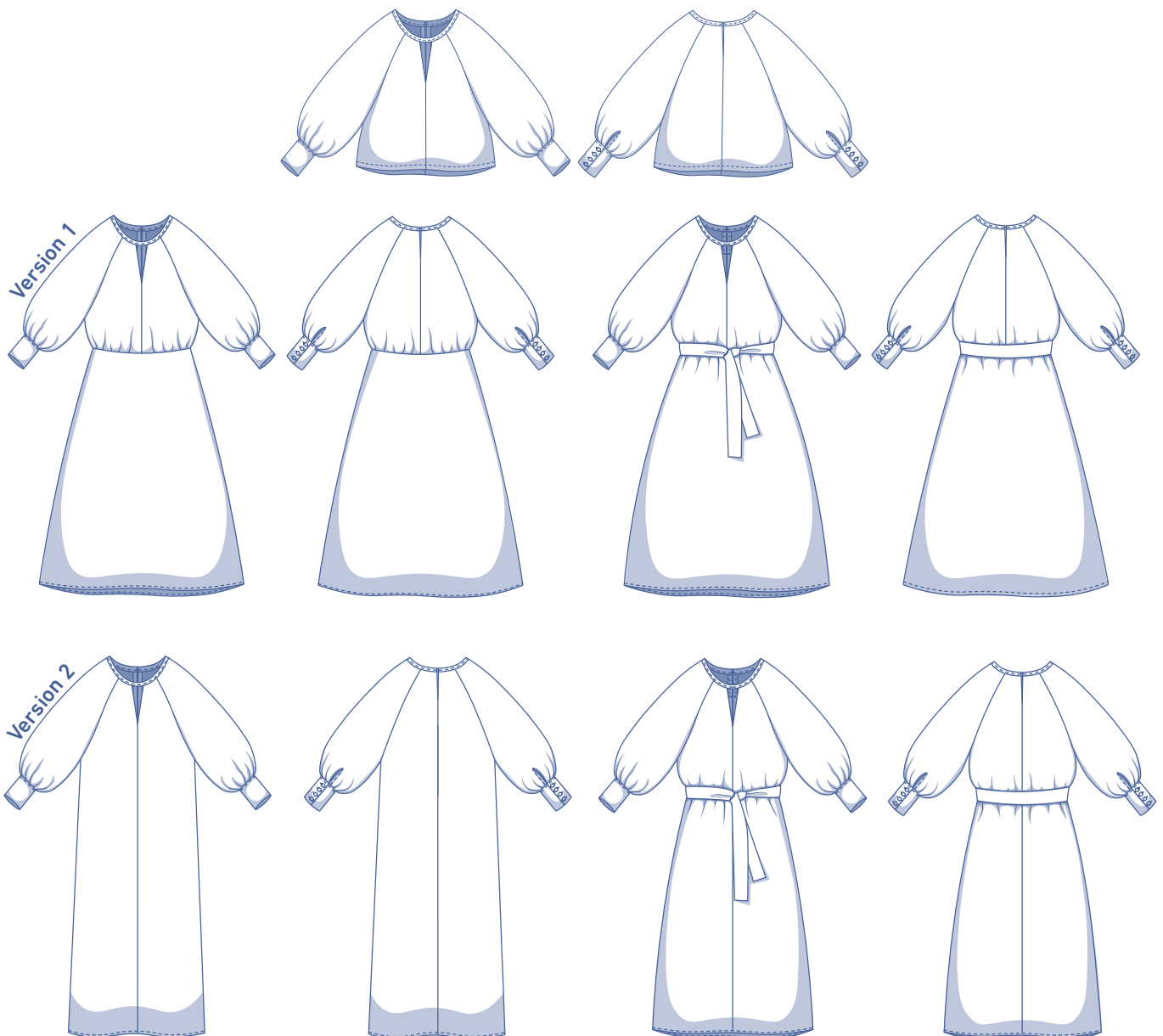


Josephine by Fibre Mood



XS - XXXL

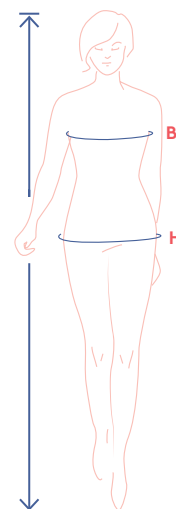
No offence to Ms Baker, but this Josephine is no banana skirt. Instead, it's an ultra-feminine dress with a jewel neck, and a V-shaped keyhole finished with bias tape. The back fastens with a button. Josephine's elegant bishop sleeves taper at the end with narrow barrel cuffs. And this dress is a hacker's dream. Just imagine the options... a dress with a gathered top, waist seam, and a long, flared skirt, optionally tightened at the waist with a belt. Or you could go with a classic blouse, or even lengthen it into a relaxed tunic, again – with or without a belt.



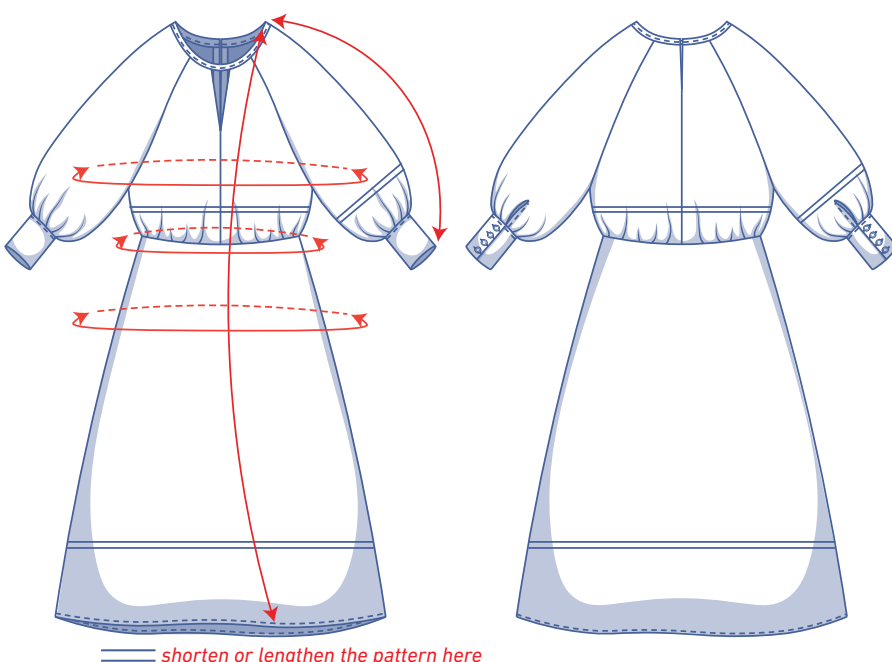
size chart (in inches)

size	XS		S		M		L		XL		XXL		XXXL		
	0	2	4	6	8	10	12	14	16	18	20	22	24	26	28
body height	5' 25"	5' 38"	5' 45"	5' 48"	5' 51"	5' 54"	5' 58"	5' 61"	5' 64"	5' 64"	5' 64"	5' 64"	5' 64"	5' 64"	5' 64"
B (bust)	29.9	31.5	33.1	34.6	36.2	37.8	39.4	40.9	43.3	45.7	48	50.4	52.8	55.1	57.5
H (hips)	33.9	35.4	37	38.2	39.4	40.6	41.7	42.9	45.3	47.2	49.2	51.2	53.1	55.1	57.1

Choose your size based on your **bust measurement**. If your hips are wider than the corresponding hip measurements in the size chart, check the hip measurements in the size chart below to see if there is enough room or whether the pattern needs to be altered at the hips. It's easy to do. Simply trace the line of the one size instead of the other.



pattern measurements (in inches)



This chart's measurements are the pattern measurements based on the fabric type and serve as a reference. Ease has been added to the width measurements (in addition to the exact body measurements) for a more comfortable fit. Josephine is designed to have a generally **loose cut, but with a fitted waist on V1**.

Depending on the fit you have in mind, you could go a size smaller or larger than the recommended size.

size	XS	S	M	L	XL	XXL	XXXL
version 1 dress length	47.2	47.6	47.9	48.3	49.3	49.9	50.4
version 2 dress length*	46.8	47.2	47.6	48	49	49.5	50
top length*	20.7	21.5	22.2	22.9	23.8	24.7	25.6
sleeve length**	23.4	23.6	23.8	24.1	24.3	24.6	24.8
bust	36.9	40.1	43.2	46.4	50.3	55	59.7
version 1 dress waist	26.5	28.1	31.2	33.6	38.8	43.9	51.6
version 1 dress hips	39.5	41	44.1	46.4	51.4	56.4	63.9
version 2 dress hips	36.9	40.1	43.2	46.4	50.3	55	59.7

* To make a Josephine dress V2 or a Josephine top, lengthen pattern pieces 1 and 2 to this measurement.

** Including shoulder length and wrist cuff.

Compare the stated lengths to the measured or desired lengths. **Lengthen** or **shorten** the dress and/or sleeves by cutting the pattern pieces at the indicated double lines. Then either increase the distance between the cut pieces by the desired amount (to lengthen) or overlap the pieces (to shorten). Make sure that the CF and CB lines and the side seams are always straight.

IMPORTANT

Adjust the amount of fabric to be used based on these alterations.



notions



- Thread
- Iron-on interfacing: max.8"
- Buttons (Ø 3/8"): 8
- Hook-and-eye closure: 1
- Concealed zip: 16" (only for dress version 1)
- Fabric: see table

fabric use, version 1 dress		XS	S	M	L	XL	XXL	XXXL
fabric width 43"	yd	3 3/4	3 3/4	3 3/4	4	4 1/4	4 1/2	4 3/4
fabric width 55"	yd	2 3/4	3	3 1/4	3 1/4	3 3/4	3 3/4	3 3/4

The corresponding fabric layout can be found on page 6 of these sewing instructions.

fabric use, version 2 dress		XS	S	M	L	XL	XXL	XXXL
fabric width 43"	yd	2	2	2 1/4	2 1/4	2 1/2	2 3/4	3
fabric width 55"	yd	1 1/2	1 1/2	1 1/2	1 3/4	2	2	2 1/4

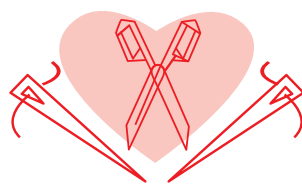
fabric use, top		XS	S	M	L	XL	XXL	XXXL
fabric width 43"	yd	3 1/2	3 1/2	3 3/4	3 3/4	4 1/4	4 1/4	4 1/2
fabric width 55"	yd	2 1/2	2 1/2	2 1/2	2 3/4	3 1/2	3 1/2	3 1/2

fabric advice



The sky's the limit. Josephine looks a treat in soft drape fabrics, e.g. viscose (crepe), polyester (crepe), lyocell, seersucker, double gauze, crepon, and broderie anglaise. But... it also looks just as lovely in fabrics with more body, e.g. poplin, silicon poplin.

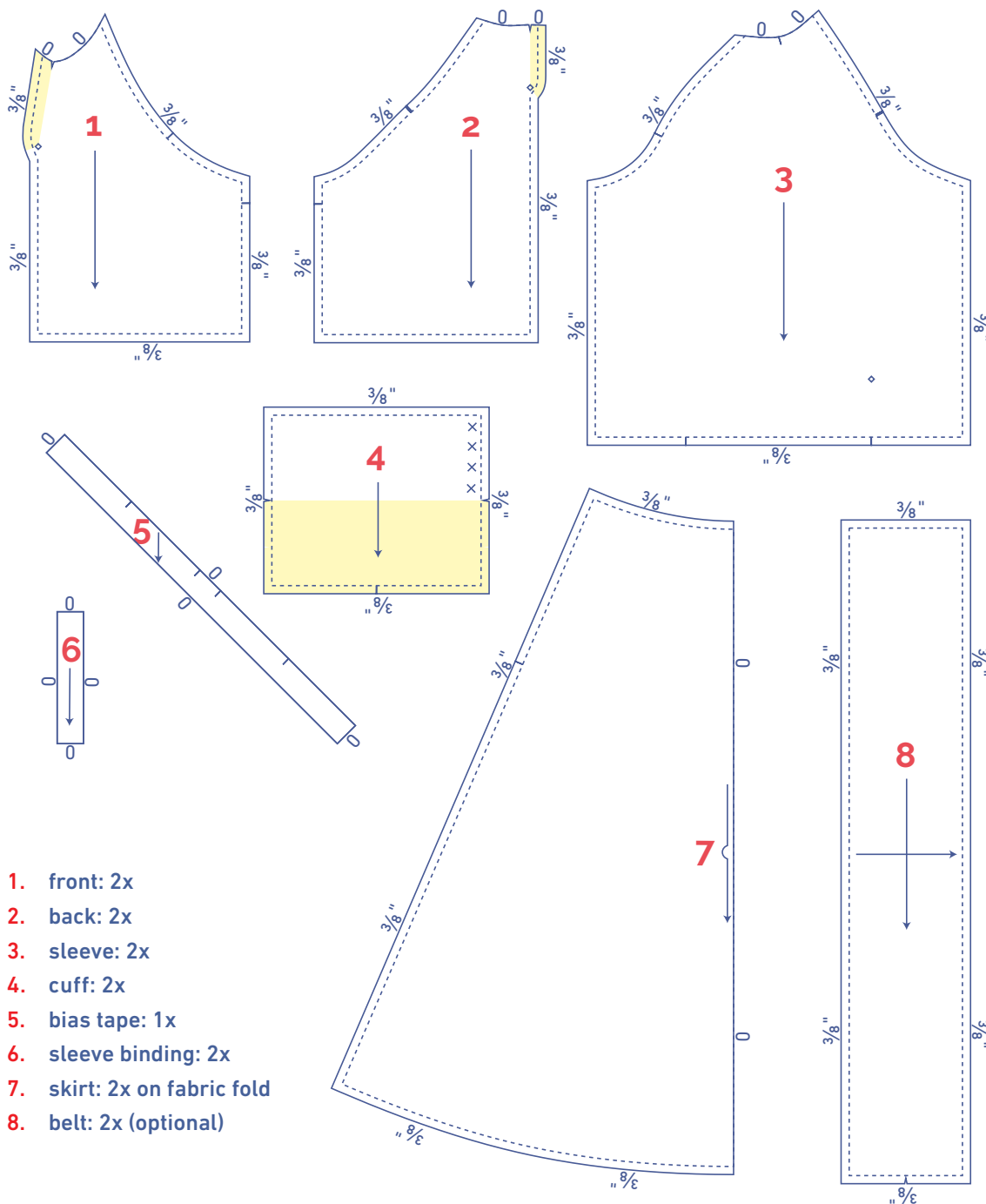
Proud to be #Sewista



pattern pieces & seam allowances (in inches)

To sew the garment as described in the instructions, draw the illustrated seam allowances around the paper pattern pieces before cutting them out. If you are using a PDF pattern, the pattern can be printed with or without seam allowance.

To find out more, watch the [video](#).



1. front: 2x
2. back: 2x
3. sleeve: 2x
4. cuff: 2x
5. bias tape: 1x
6. sleeve binding: 2x
7. skirt: 2x on fabric fold
8. belt: 2x (optional)

To make dress version 1, you need pattern pieces 1 through 8. Pattern piece 8 is optional.

To make dress version 2, you need pattern pieces 1 through 6. Pattern piece 8 is optional.

To make the top, you need pattern pieces 1 through 6.

Important!

To make the top and version 2 of the dress, you need to lengthen pattern pieces 1 and 2 to the stated length (see pattern measurements chart) or the desired length, plus 3/4" of hem allowance.

?	material type
	fabric
	iron-on interfacing

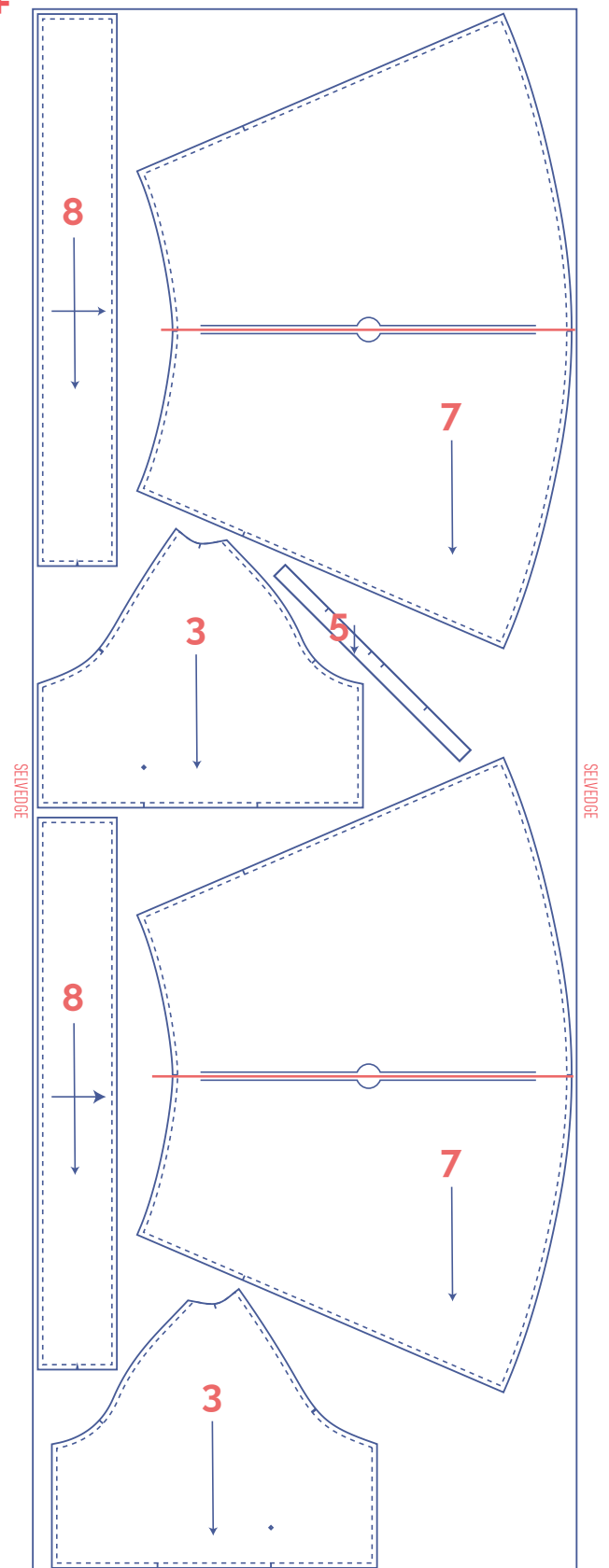
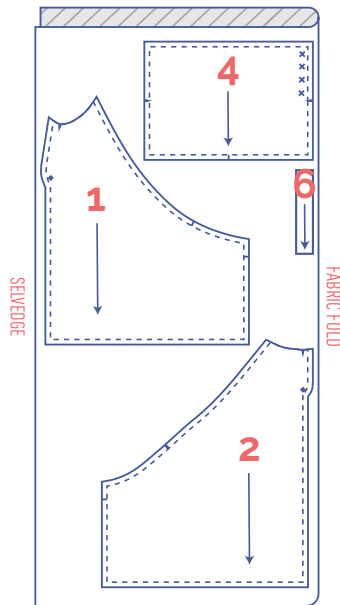
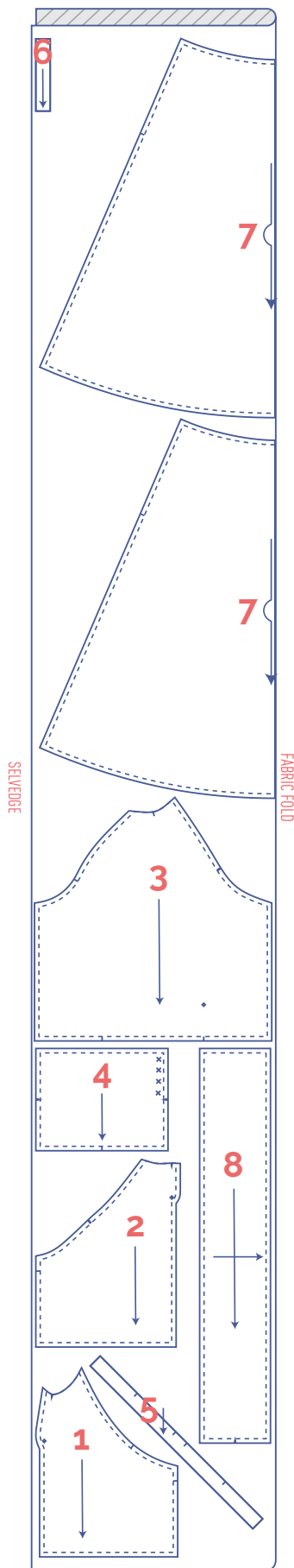
fabric layout – solid fabrics

fabric width 43"

XS - L

XL - XXXL

+



IMPORTANT

You only need pattern piece 5 once.

IMPORTANT

Because the fabric is single layer, you'll need to cut mirror images of pattern piece 3 so you have a right sleeve and left sleeve.

Pattern piece 7 has been rotated at a 90° angle to fit on the fabric. If you are working with a patterned or napped fabric and you want everything in the same direction you may need some extra fabric.

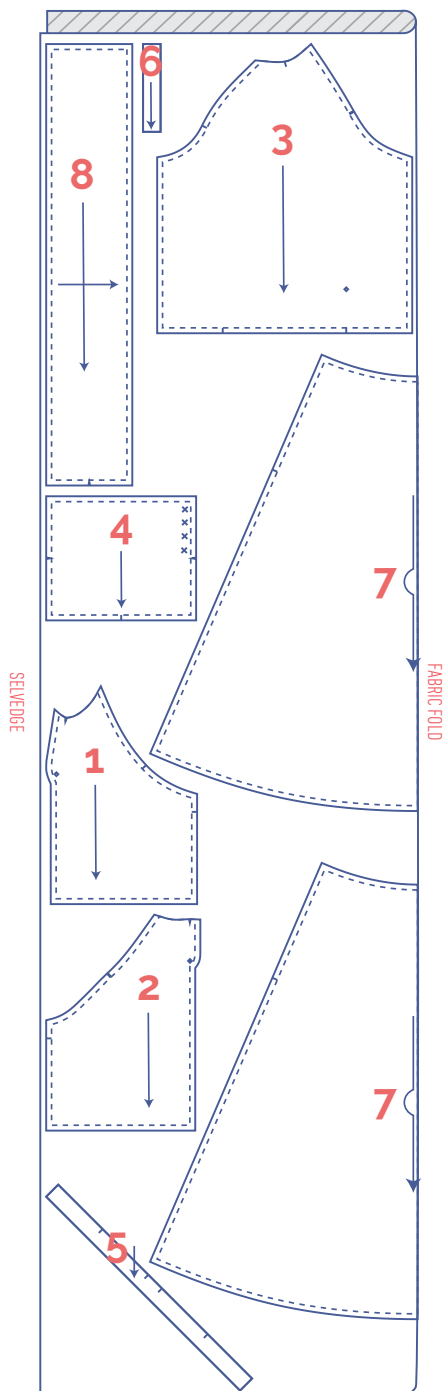
fabric layout – solid fabrics

fabric width 55"

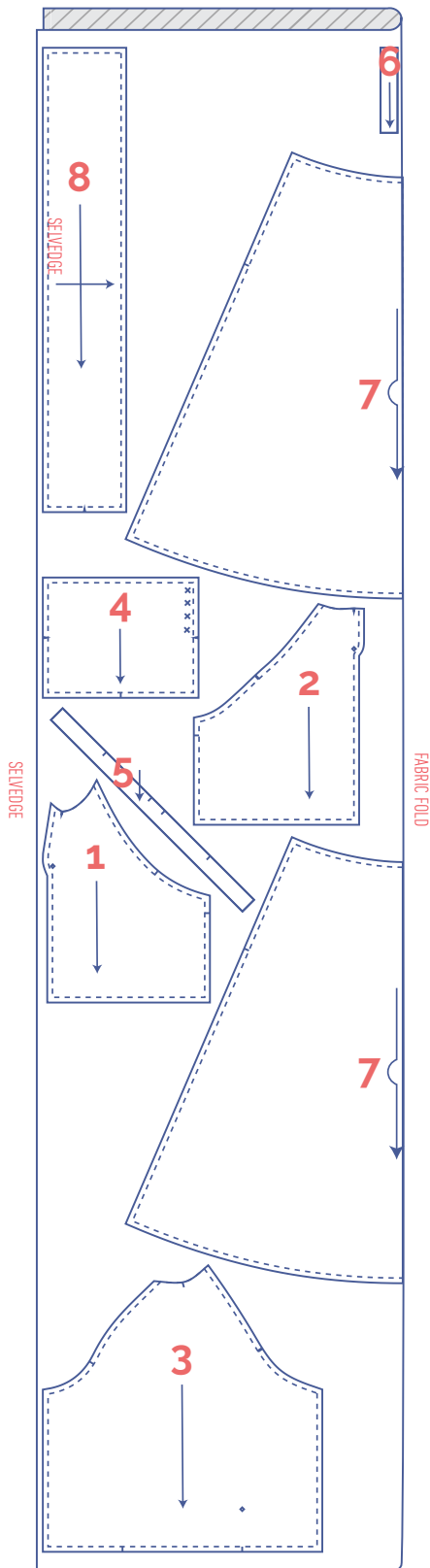
IMPORTANT

You only need pattern piece 5 once.

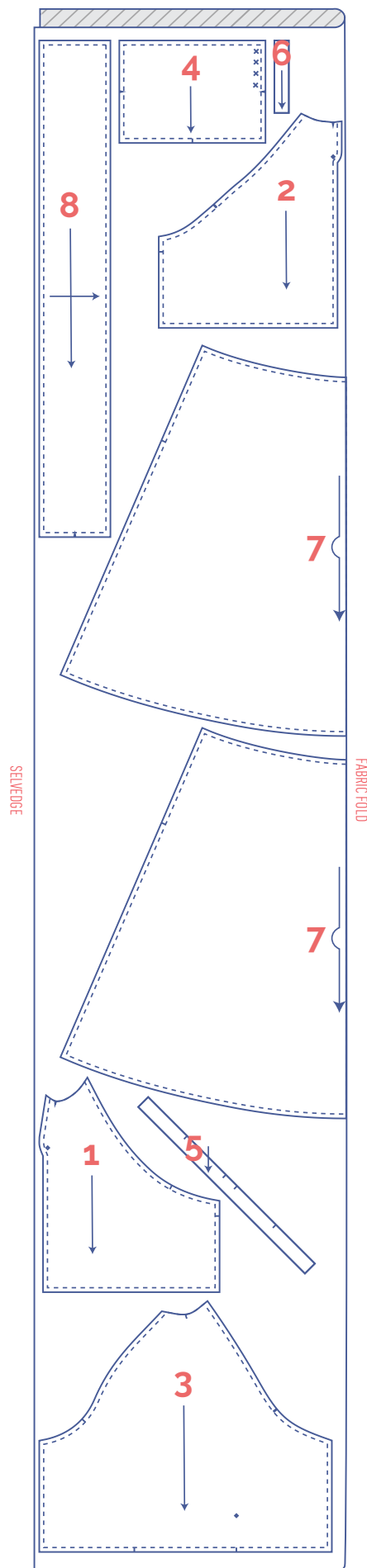
XS - S



M - L



XL - XXXL



marking pattern pieces



Notch the pattern paper and fabric at the following points



single notch



double notch



V-notch/fabric fold



Mark the following centre points with marking thread



centre point



snap/button

sewing instructions



The method used to finish the seams depends on the fabric used.
The pieces are always sewn together with the right sides of the fabric facing, unless stated otherwise.

F front

B back

CF centre front

CB centre back

 right side

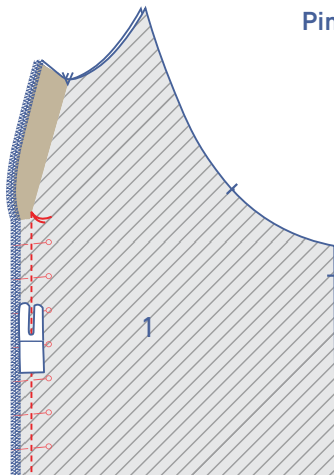
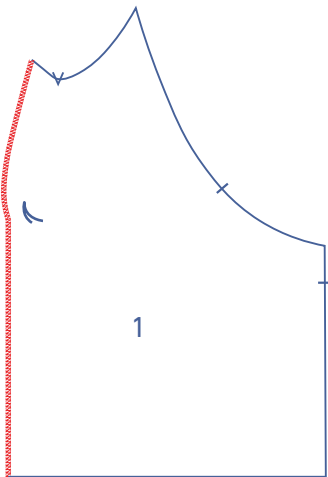
 wrong side

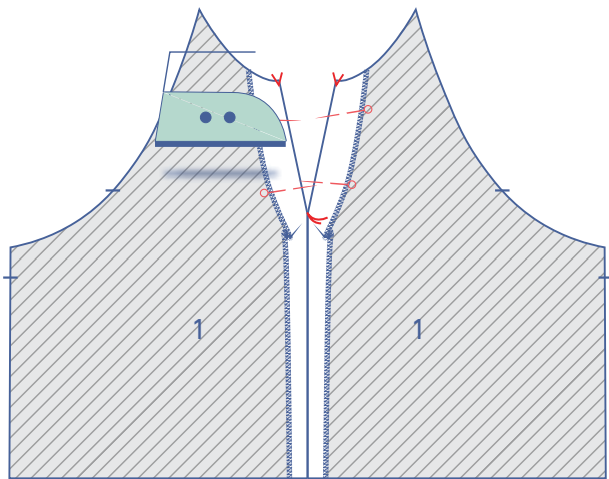
 iron-on interfacing

1

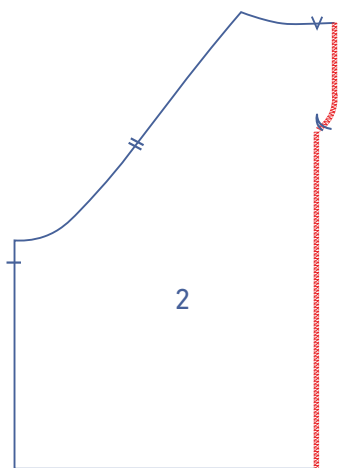
Finish the edge of the front (1) with overlock stitching where indicated.

Pin and sew the CF seam up to the marking thread.



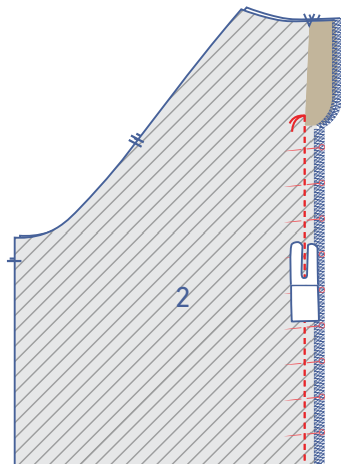


Press the seam allowance open. Also press the facing at the top towards the wrong side, from the V notch to the marking thread. Pin temporarily into place.

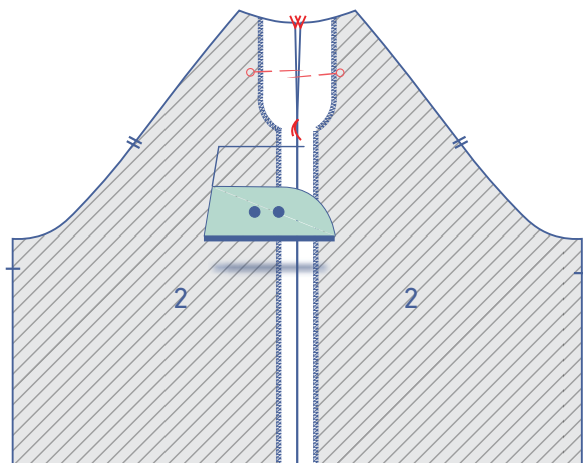


2

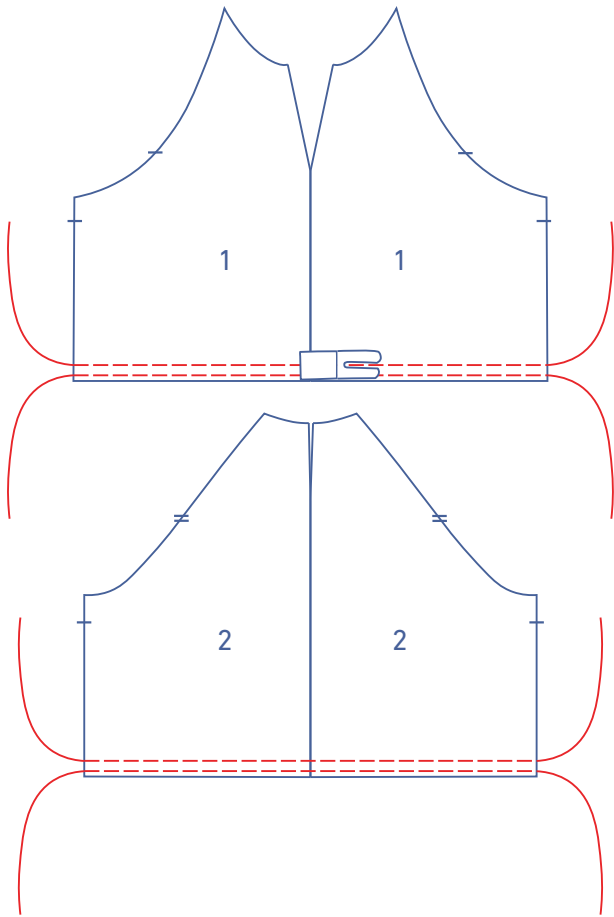
Finish the edges of the back (2) with overlock stitching where indicated.



Pin and sew the CB seam up to the marking thread.



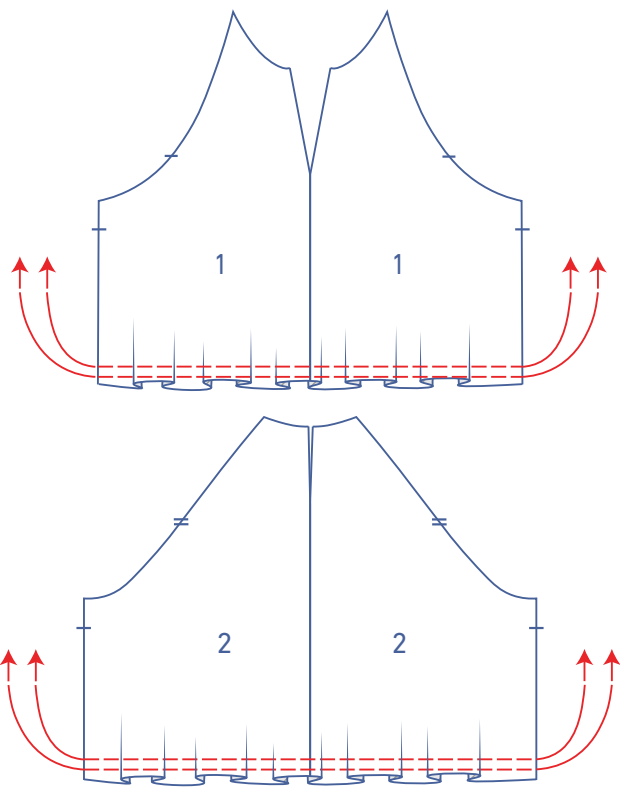
Press the seam allowance open. Also press the facing at the top towards the wrong side, from the V notch to the marking thread. Pin temporarily into place.



3

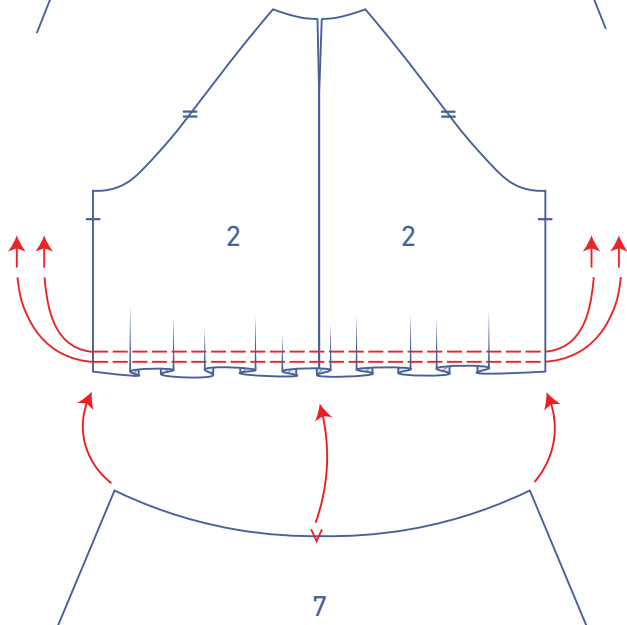
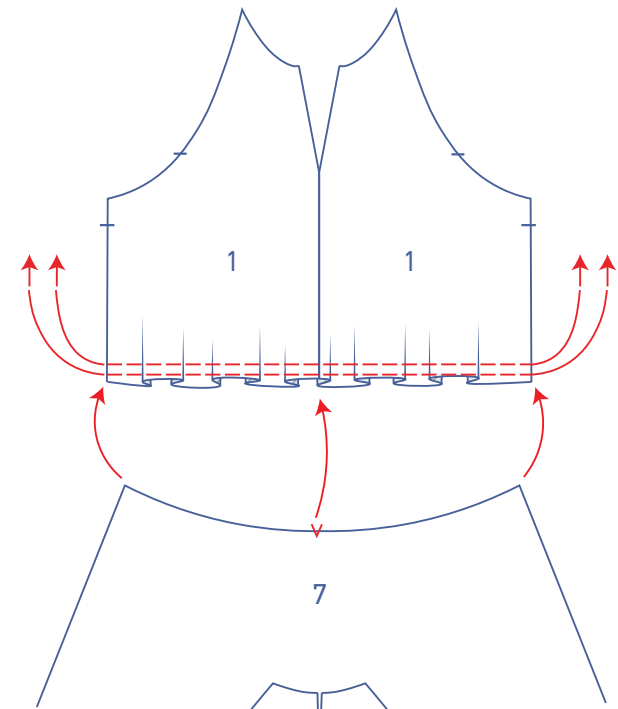
For the top and dress V2, skip these steps and go straight to step 4.

Sew two parallel lines along the bottom of the front and back with a long stitch length at a low thread tension. Leave a length of thread at the start and end of your stitching.

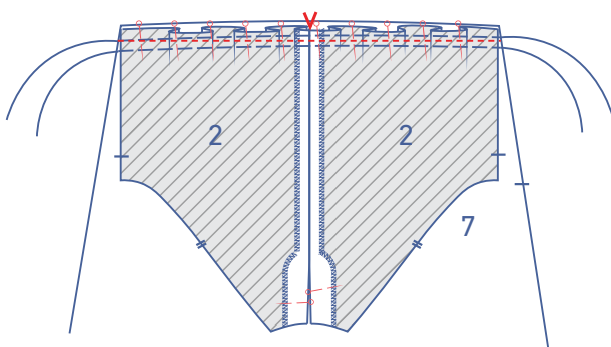
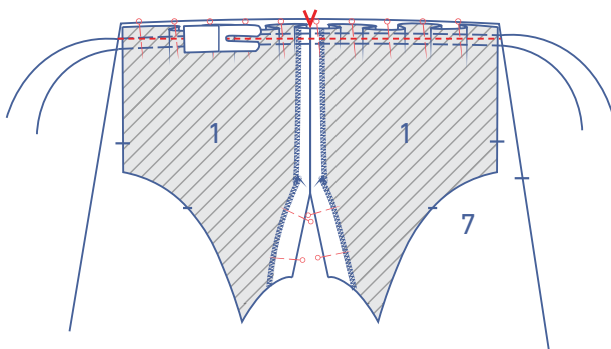


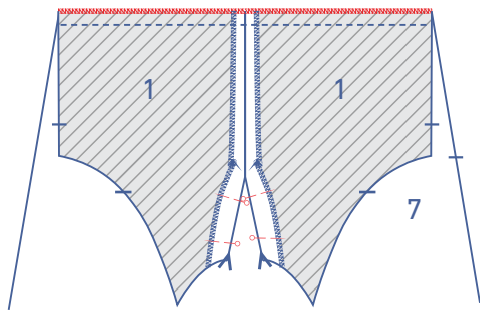
Gently tug the ends of the threads to gather the fabric.

Pin the front to the skirt piece (7), matching side seams and adjusting the gathers so that the V notch matches the CF of the bodice. Repeat to attach the back bodice to the back skirt.

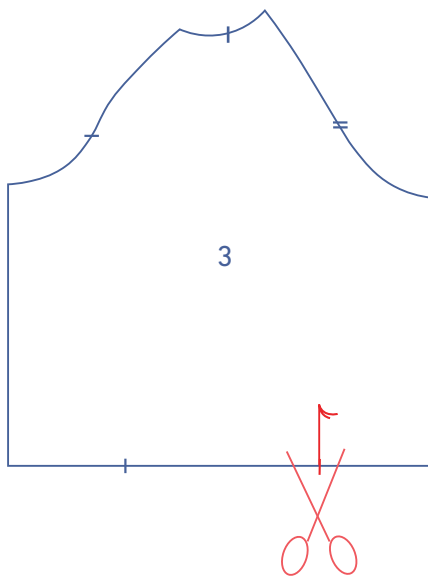
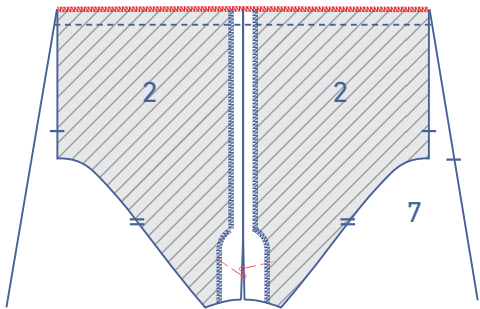


Sew into place.



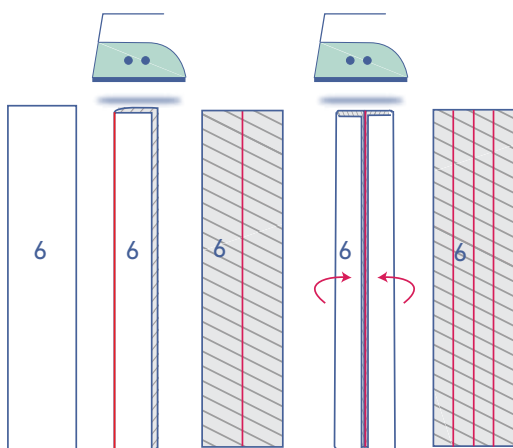


Finish the raw edges together with overlock stitching.



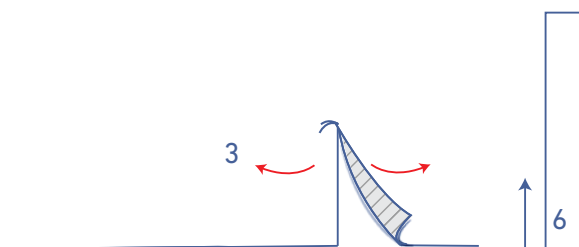
4

Snip into the sleeve (3) from the notch in the hem up to the marking thread.

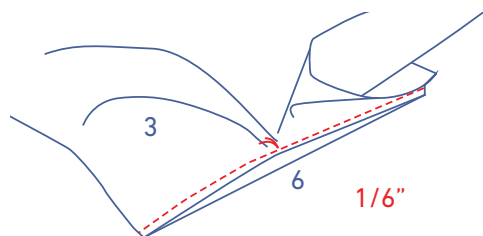


Press the sleeve binding (6) as follows:

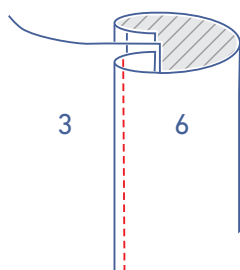
- Start by pressing the sleeve binding in half with the long ends together and the wrong sides of the fabric touching to create a fold line. Open back out.
- Then, press the long ends in so that the raw edges match the fold line. Open the bias tape back out.



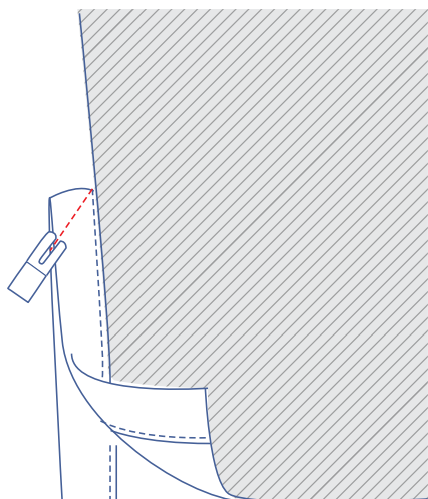
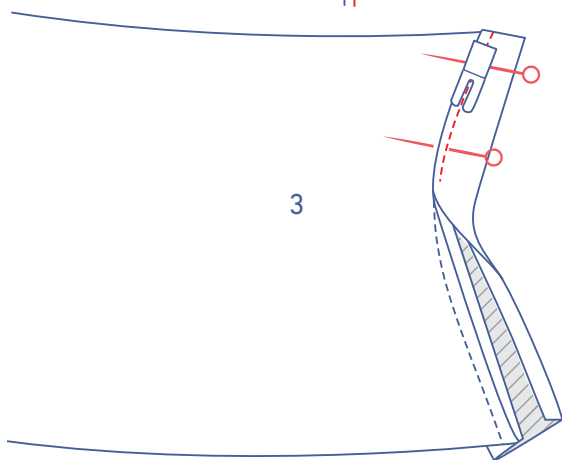
Open the sleeve split so that you end up with a single straight line.



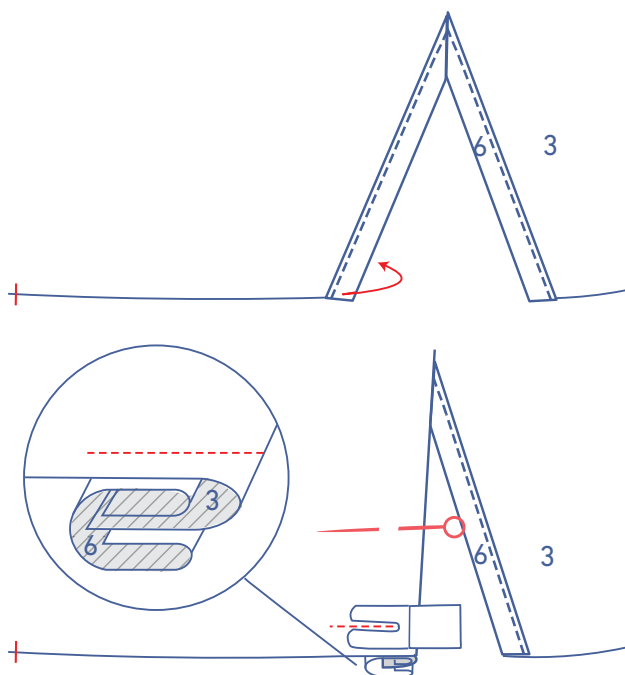
Slide the sleeve binding under the sleeve with the right side facing up. Match one long end to the end of the sleeve split and pull the sleeve a little to the side at the marking thread. Sew into place at $\frac{1}{6}$ ". Only a tiny section of the fabric should have been sewn at the marking thread.



Turn the sleeve binding over towards the right side of the sleeve and tuck under the raw edge at the fold line. Place the pressed fold line directly over the stitching. Edgestitch into place.



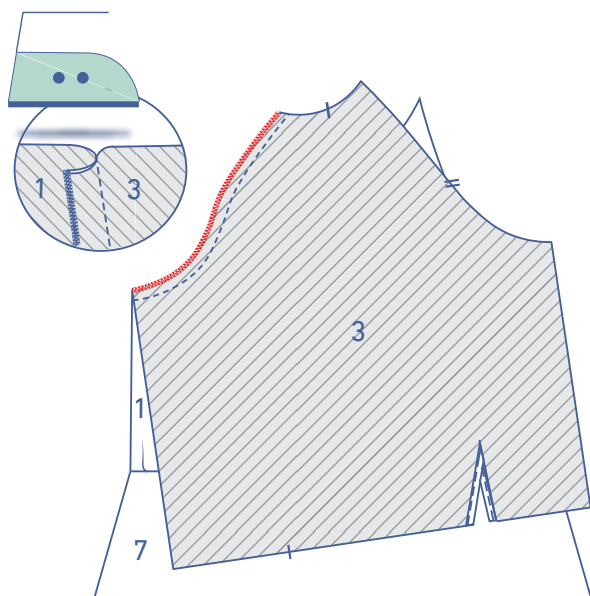
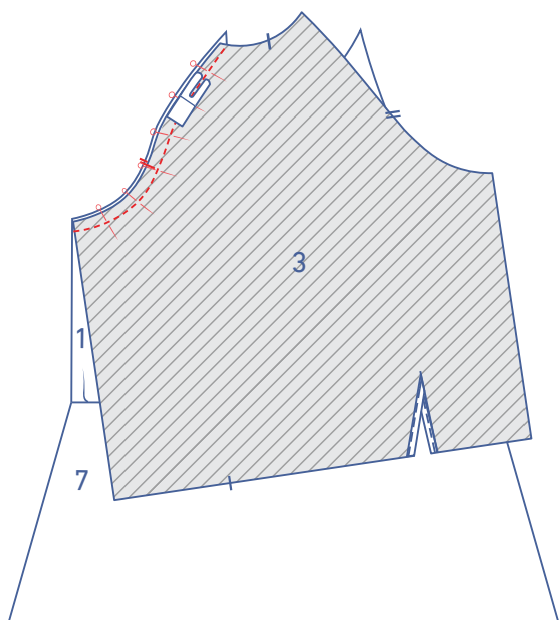
Fold the sleeve in half crosswise with the right sides facing each other. Sew the top of the sleeve binding together at an angle.



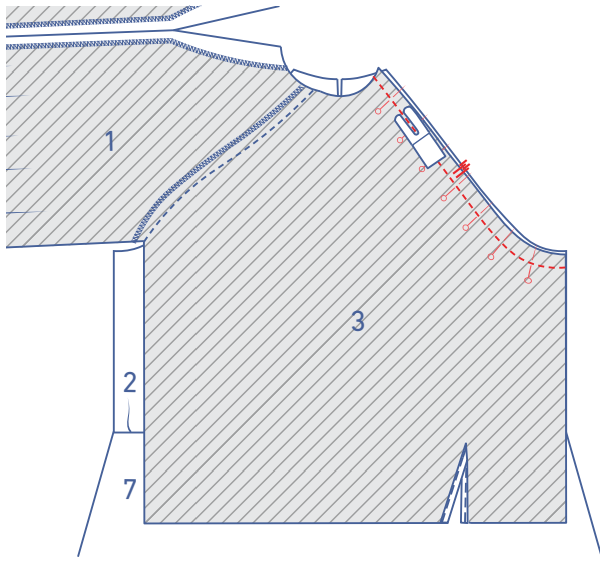
Fold the sleeve binding at the front of the sleeve (marked with a single notch) towards the wrong side of the sleeve and sew the sleeve binding into place at presser foot width from the bottom.

5

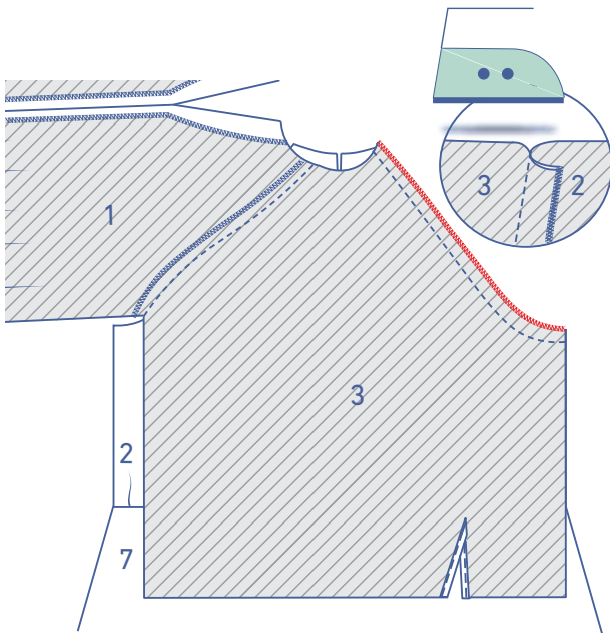
Pin and sew the sleeve end with a single notch to the front, matching the markings.



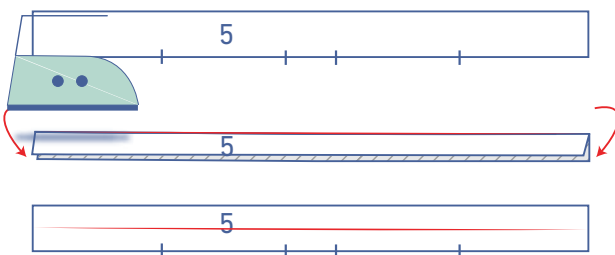
Finish the raw edges together with overlock stitching and press the seam allowance towards the front.



Pin and sew the sleeve end with a double notch to the back, matching the markings.

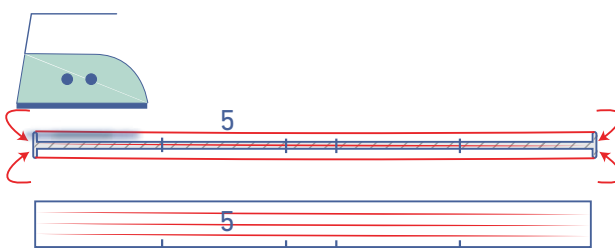


Finish the raw edges together with overlock stitching and press the seam allowance towards the back.

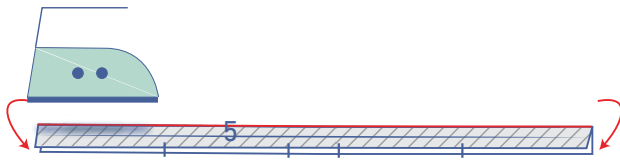


6

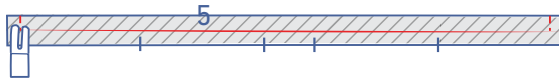
Press the bias tape (5) in half with the long ends together and the wrong sides facing each other. Open back out.



Press both raw edges to the pressed centre line. Open back out.



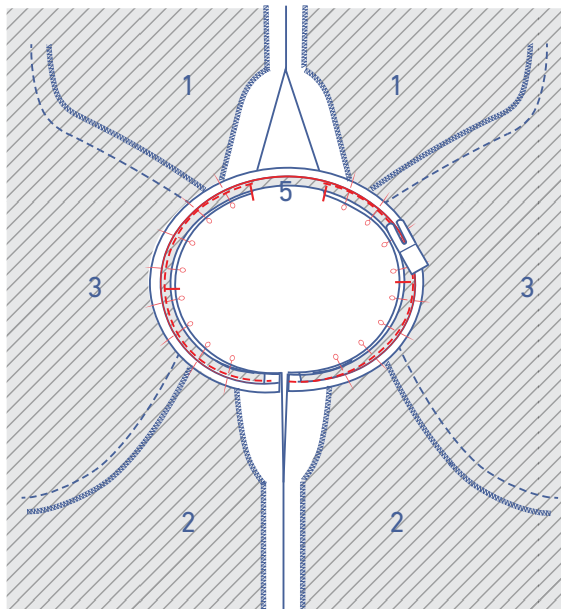
Fold the bias tape in half along the pressed fold line so that the right sides of the fabric are touching.



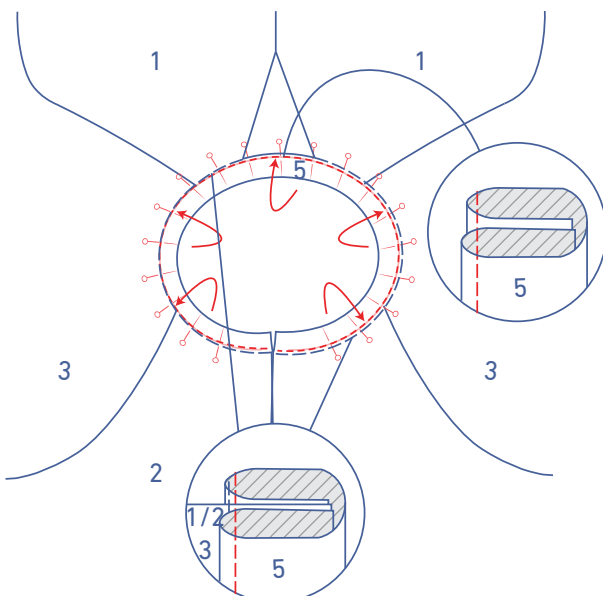
Sew the short end from the pressed centre line to the other pressed fold line.



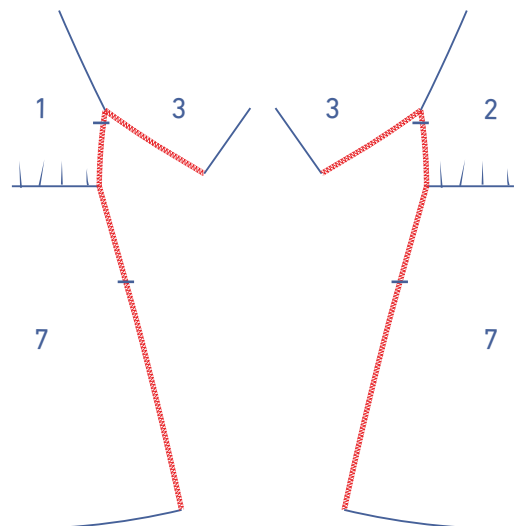
Turn the right way out and fold the long unnotched edge in along the pressed foldline.



Pin and sew the bias tape to the wrong side of the neckline. The finished edges of the bias tape match the finished edges of the CB. The notches in the middle of the bias tape should match the finished edges of the CF. Make sure that the outer single notches on the bias tape line up evenly with the notch in the top of the sleeve.

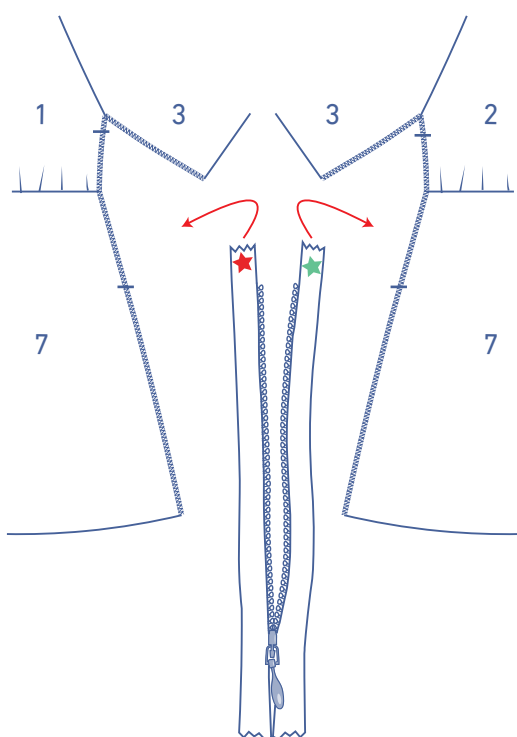


Fold the bias tape over to the right side and match the pressed edge to your previous stitching. Edgestitch all the way around. At the CF, match both pressed edges of the bias tape and sew them together.



7

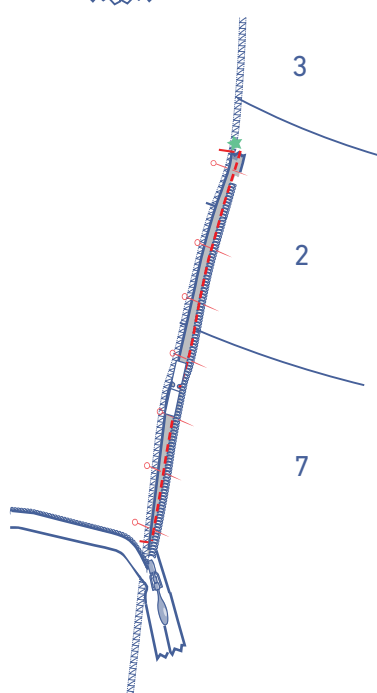
Finish the underarm and side seams with overlock stitching.



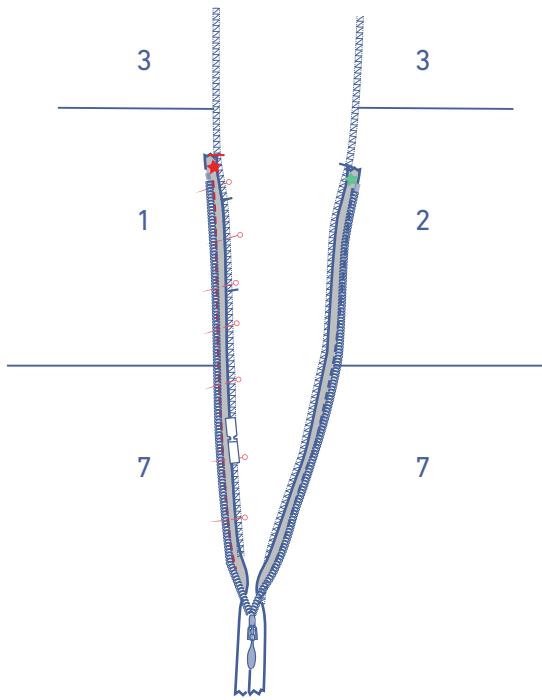
8

For the top and dress V2, skip these steps and go straight to step 9.

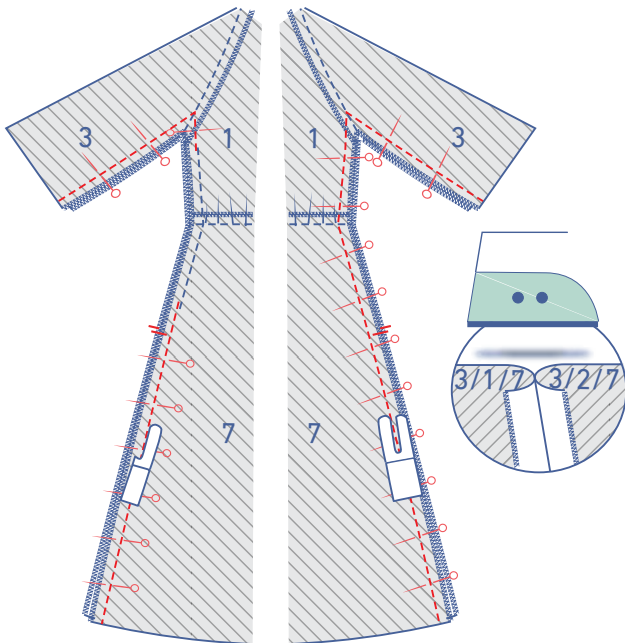
Place the front and back in front of you with the right sides facing up. Then place the concealed zip in front of you with the right side facing up. Open the zip.



Now, fold the green star zip tape to the right and pin it to the side seam of the back. The edge of the zip tape matches the edge of the fabric, and the top of the zip line up evenly with the single notch in the side seam. Sew into place with the invisible zipper foot.



Now, fold the red star zip tape to the left and pin it to the side seam of the front. The zip tape should match the edge of the fabric, with the top of the zip even with the single notch. Sew into place with the invisible zipper foot.



9

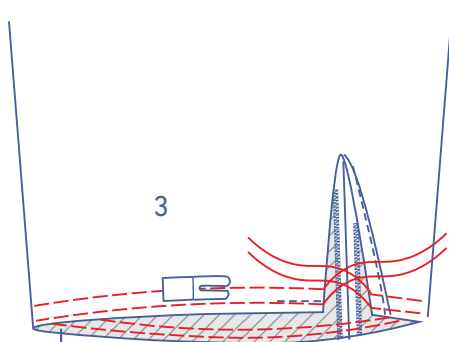
Dress V1 (with concealed zip):

Close the zip and sew the rest of the underarm and side seam into place above and below the zip with the zipper foot. Continue sewing under the zip, a little above and just next to the zip tape stitching. Sew together down to the hem. The right side seam can be sewn into place with a standard sewing foot.

The top and dress V2 (without concealed zip):

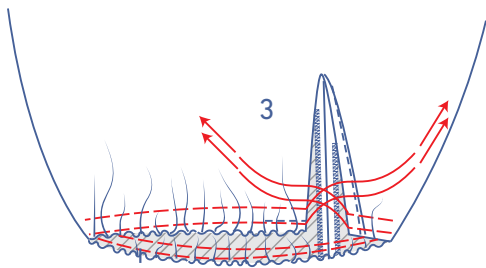
Pin and sew the side and underarm seams.

Press the seam allowance open.

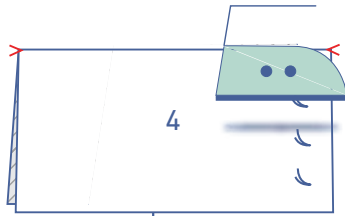


10

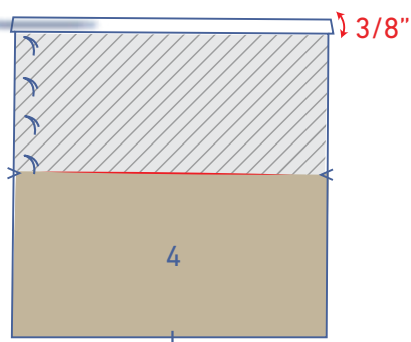
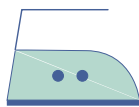
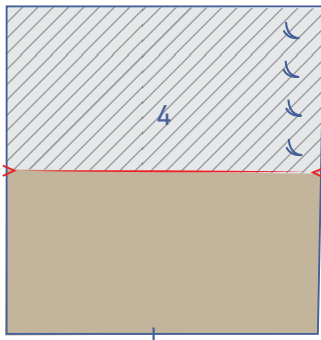
Sew two parallel lines of stitching along the bottom of the sleeve, using a long stitch length at a low thread tension. Leave a length of thread at the start and end of your stitching.



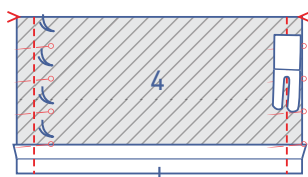
Gently tug the ends of the threads to gather the fabric.



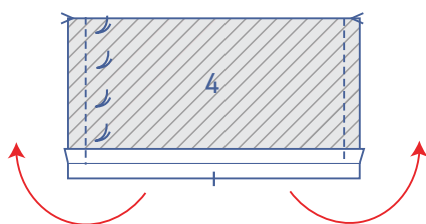
Press the cuff (4) in half at the V notches with the wrong sides of the fabric touching to create a fold line. Open back out.



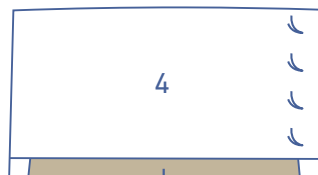
Press the unnotched long end $\frac{3}{8}$ " towards the wrong side.

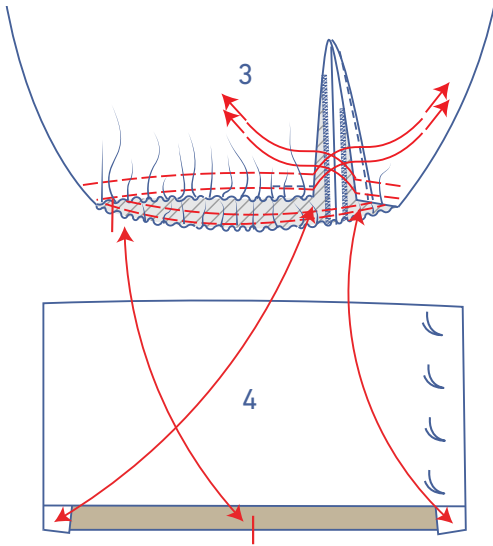


Fold the cuff in half at the V notches with the right sides of the fabric facing each other. Pin and sew the sides.

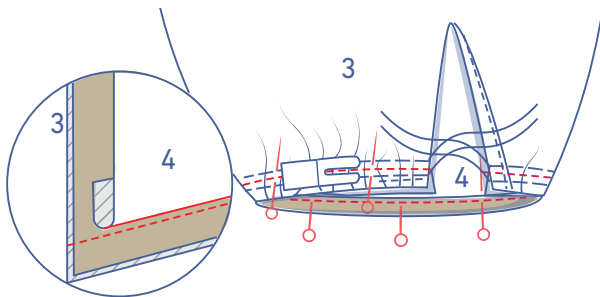


Turn the cuff the right way out.

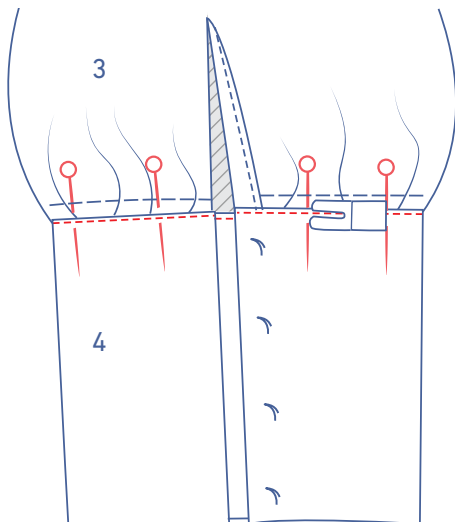




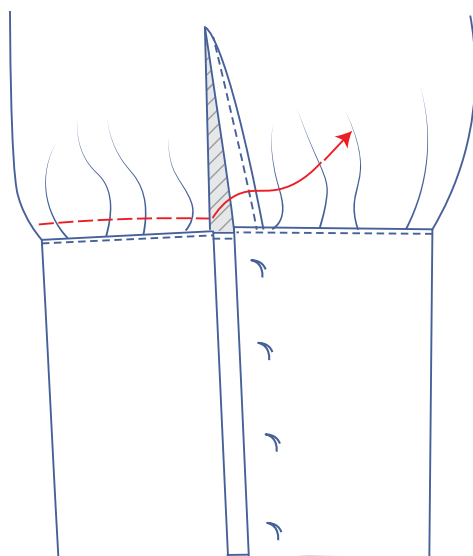
Slide the sleeve over the cuff, distributing the gathers until the notch in the sleeve and cuff match.



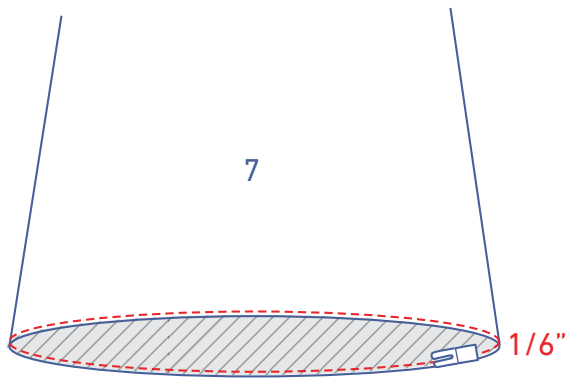
Pin the unpressed raw edge of the cuff to the bottom of the sleeve, matching the notches. Sew into place.



Fold the cuff over to the right side of the sleeve and place the pressed edge directly over your previous stitching. Pin and sew into place right next to the edge.



Remove the gathering threads.

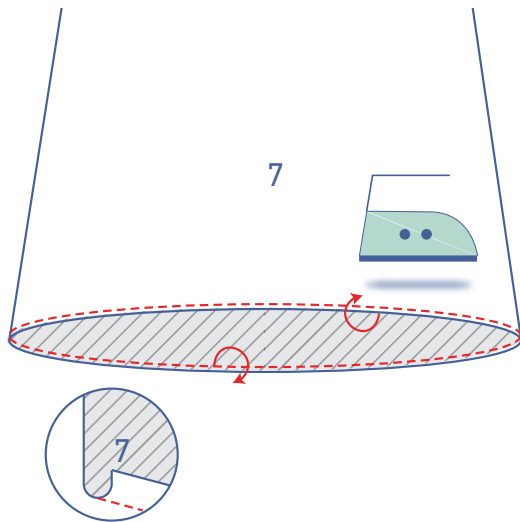


11

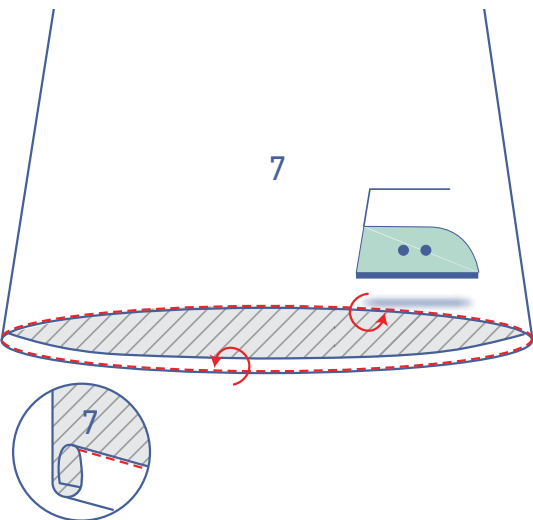
Dress V1

Sew all the way around the bottom of the dress at 1/6" from the raw edge.

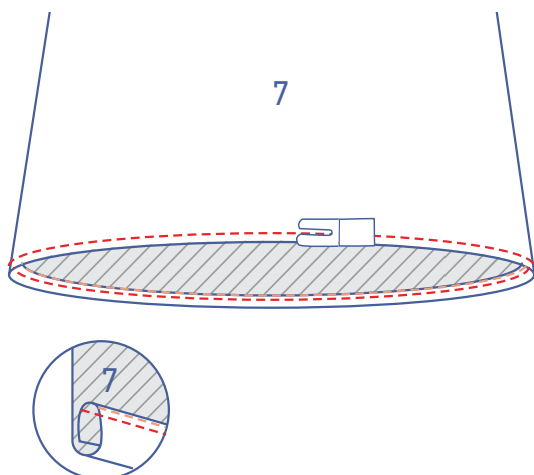
Then, press the edge over at the stitching.

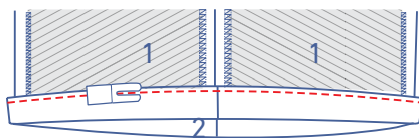
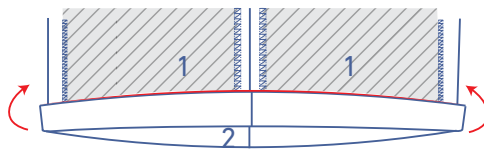
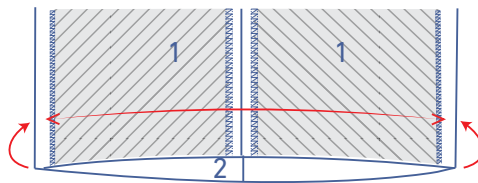
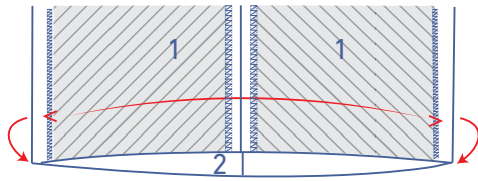
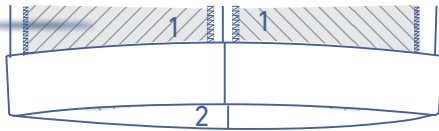
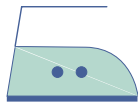


Fold over the edge again towards the wrong side.



Edgestitch into place.



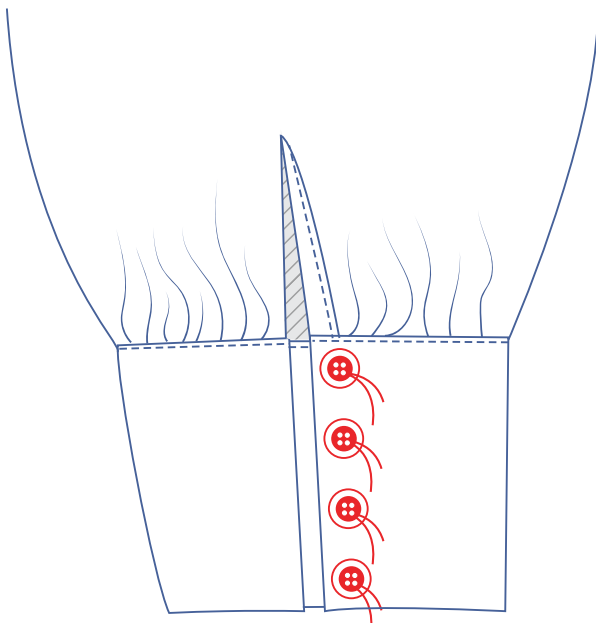


Top and dress V2

Press the hem allowance up and open back out.

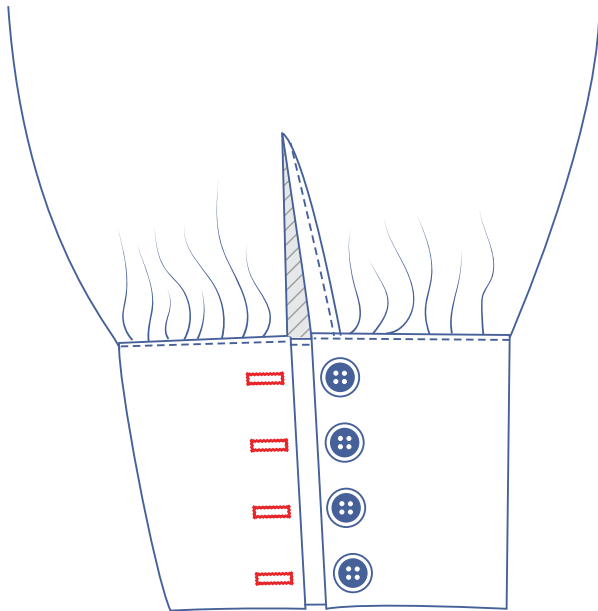
Match the raw edge to the pressed fold line and turn up again.

Edgestitch into place.

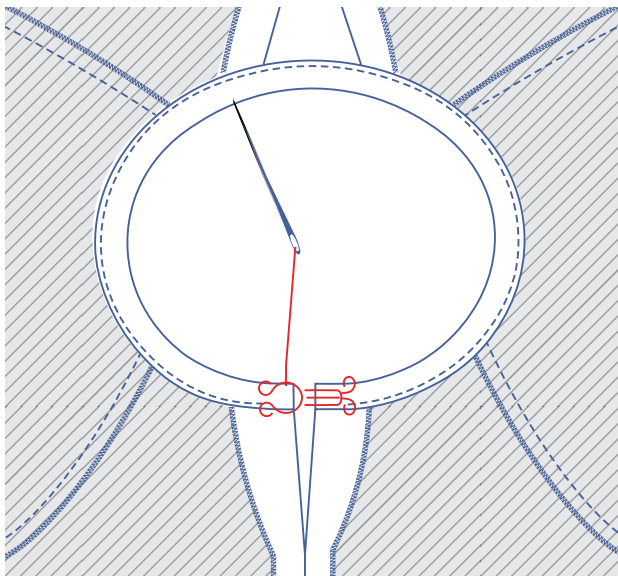


12

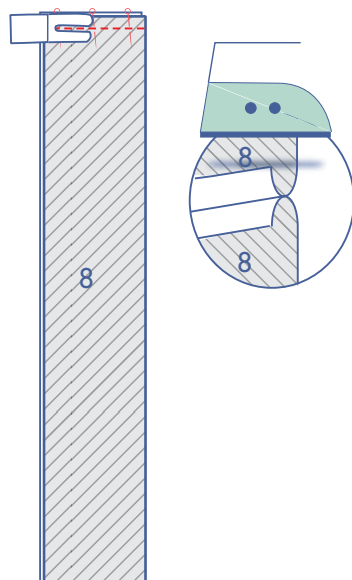
Sew the buttons onto the cuff where indicated.



Make horizontal buttonholes based on the button locations.



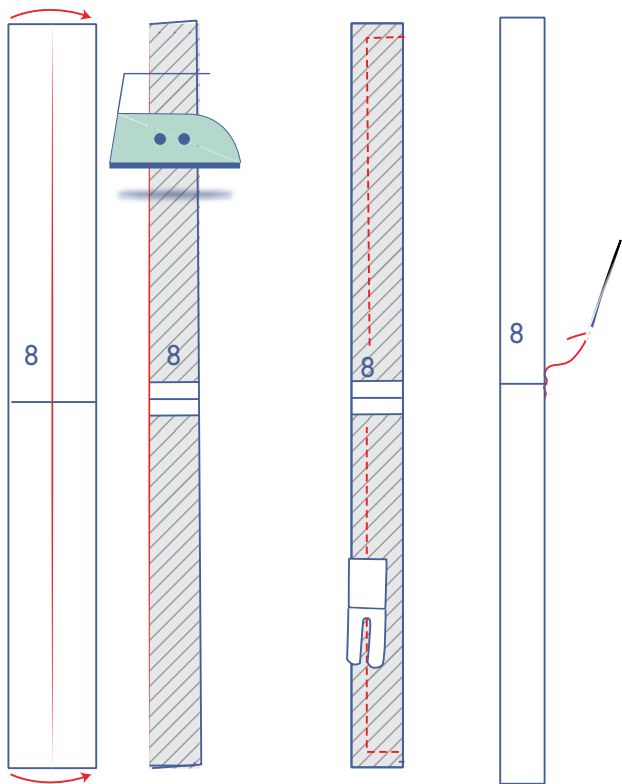
Sew the hook-and-eye to the CB.



13

OPTIONAL

Pin and sew the short ends of both belt pieces (8) together. Press the seam allowance open.



First, open the belt all the way out. Then fold it in half with the long ends touching and the right sides of the fabric facing each other.

Sew the edges where indicated, but leave an opening to turn the belt the right way out again.

Turn the belt the right way out and sew the opening closed.