

## Flora by Fibre ⚡ood



# Flora by Fibre Mood



Without welt pockets

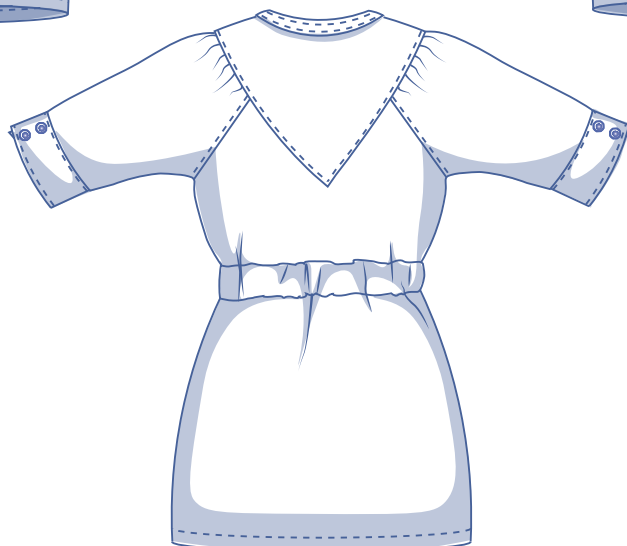
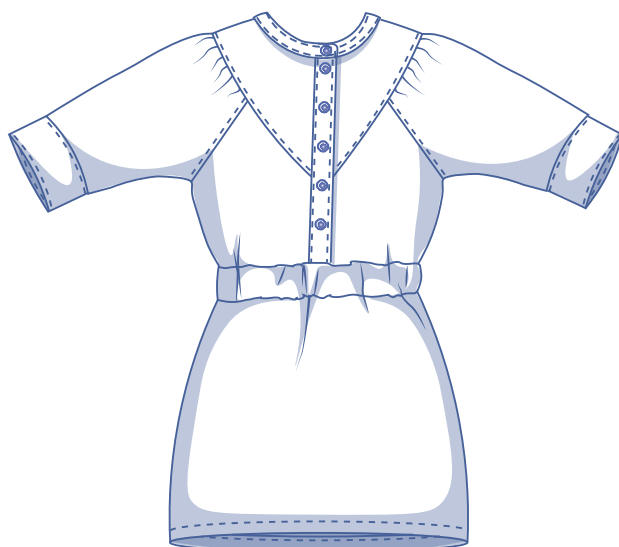
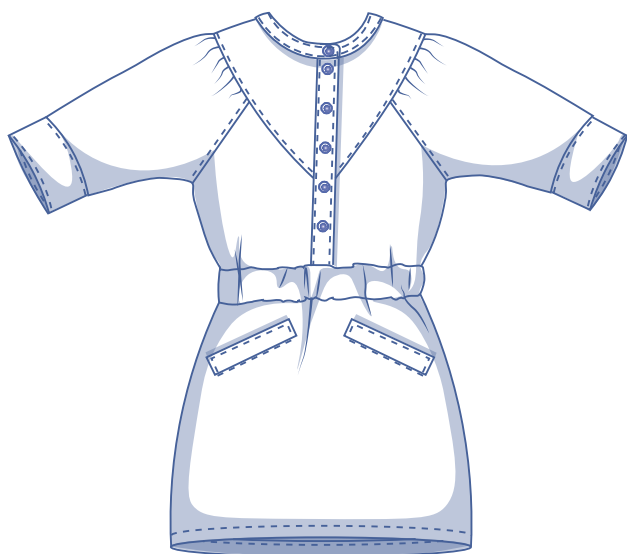


With welt pockets



0 - 28

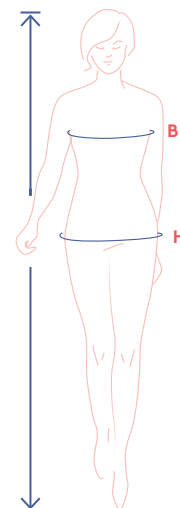
Elegance in a short(ish) dress. A string of sweet details make Flora a cut above: a row of buttons on the bodice, a beautiful neckline, a yoke with an 80s vibe, and gathered three-quarter-length sleeves with button cuff, elastic waist. Flora can be made with or without pockets. If you're up for a challenge, sew on the pretty welt flap pockets. For something easier, leave off the pockets altogether.



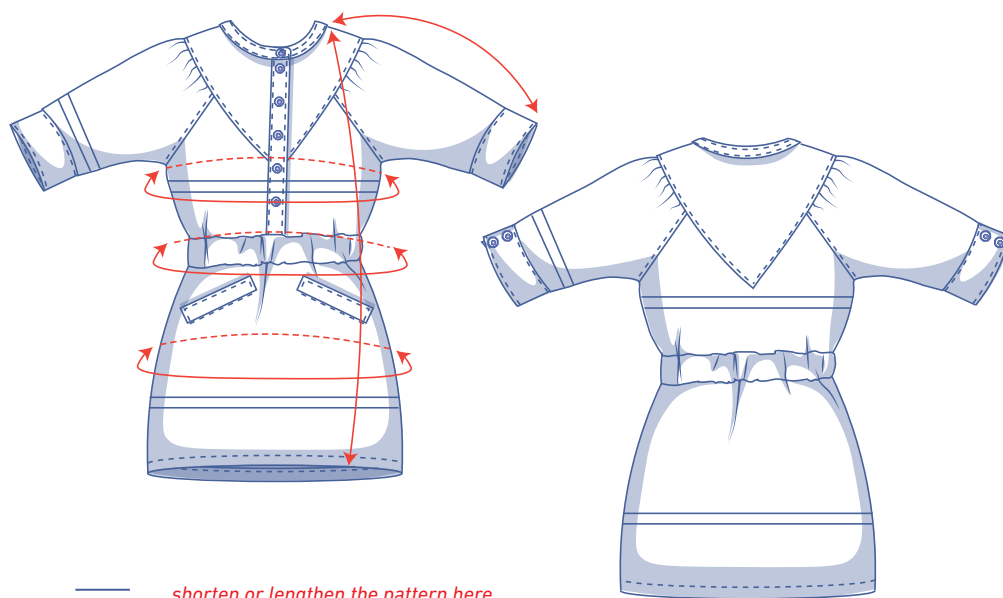
## size chart (in inches)

size	0	2	4	6	8	10	12	14	16	18	20	22	24	26	28
H (height)	5'25"	5'38"	5'45"	5'48"	5'51"	5'54"	5'58"	5'61"	5'64"	5'64"	5'64"	5'64"	5'64"	5'64"	5'64"
B (bust)	29.9	31.5	33.1	34.6	36.2	37.8	39.4	40.9	43.3	45.7	48	50.4	52.8	55.1	57.5
H (hips)	33.9	35.4	37	38.2	39.4	40.6	41.7	42.9	45.3	47.2	49.2	51.2	53.1	55.1	57.1

Choose your size based on your **bust measurement**. Select the size closest to your bust measurement. If your hip measurements are wider than those in the size chart, check the hip measurements in the size chart below to see if there's enough room or whether the pattern needs to be altered. It's easy to do. Simply trace the line of the one size instead of the other.



## pattern measurements (in inches)



This chart's measurements are the pattern measurements based on the fabric type and serve as a reference. Ease has been added to the width measurements (on top of the exact body measurements) for a more comfortable fit. Flora has been designed to be **loose around the bust and fitted at the hips**. Depending on the preferred fit, the dress can be made a size bigger or smaller than the size suggested in the size chart based on your measurements.

size	0	2	4	6	8	10	12	14	16	18	20	22	24	26	28
length	38.7	38.8	38.9	39	39.1	39.2	40.1	40.2	41.2	41.3	41.5	41.6	41.8	41.9	42.1
sleeve length*	18.2	18.5	18.9	19.3	19.7	20	20.4	20.8	21.9	22.5	23	23.6	24.1	24.7	25.2
bust	36.2	37.8	39.4	41	42.5	44.1	45.7	47.3	49.7	52.1	54.5	56.8	59.2	61.6	63.9
waist with elastic	26	26.8	27.6	29.2	30.8	32.3	33.1	34.7	37.3	39.8	42.4	44.9	47.5	50	52.6
waist without elastic	35.9	37.4	39	40.6	42.2	43.7	45.3	46.9	49.2	51.6	54	56.3	58.7	61	63.4
hips	35.9	37.4	39	40.6	42.2	43.7	45.3	46.9	49.2	51.6	54	56.3	58.7	61	63.4

\* Including the shoulder length and cuff.

Compare the stated lengths to the measured or desired lengths. **Lengthen** or **shorten** the dress and/or the sleeves by cutting the pattern pieces at the indicated double lines. Then either increase the distance between the cut pieces by the desired amount (to lengthen) or overlap the pieces (to shorten). Make sure that the CF and CB lines and the side seams are always straight.



## IMPORTANT

Adjust the amount of fabric to be used based on these alterations.

## notions



- Thread
- Iron-on interfacing: max.  $\frac{3}{5}$  yd
- Snaps ( $\varnothing \frac{9}{16}$ " ): 10
- Elastic\* (width 1.6"): see table
- Fabric: see table

elastic		0	2	4	6	8	10	12	14	16	18	20	22	24	26	28
length	yd	0.75	0.78	0.80	0.84	0.89	0.93	0.95	1.00	1.07	1.14	1.21	1.28	1.35	1.42	1.49

\* The elastic's stated measurements (including overlap) are merely indicative and depend on the type of elastic. To determine the exact length, use the elastic to measure around the waist for the proper measurement. Add 3 cm of overlap to the measured amount.

fabric		0	2	4	6	8	10	12	14	16	18	20	22	24	26	28
fabric width 43"	yd	3	3	3	3	3	3	3	3	3 $\frac{3}{4}$	4	4	4	4	4	4
fabric width 55"	yd	2 $\frac{1}{2}$	2 $\frac{1}{2}$	2 $\frac{1}{2}$	2 $\frac{1}{2}$	2 $\frac{1}{2}$	2 $\frac{1}{2}$	2 $\frac{1}{2}$	2 $\frac{1}{2}$	2 $\frac{3}{4}$	2 $\frac{3}{4}$	3 $\frac{1}{4}$	3 $\frac{1}{4}$	3 $\frac{1}{4}$	3 $\frac{1}{4}$	3 $\frac{1}{4}$

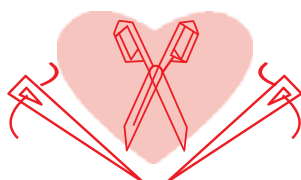
The corresponding fabric layout can be found on page 6 of these sewing instructions.

## fabric advice



Make Flora in a mid- to heavyweight woven fabric. Denim, cotton twill, poplin, chambray (fine wale) corduroy, leather(ette), woven jacquard are all great. The fine details rule out knit fabrics for this pattern; the level of stitching precision required makes it just a bit too tricky.

# Proud to be #Sewista



## pattern pieces & seam allowances (in inches)

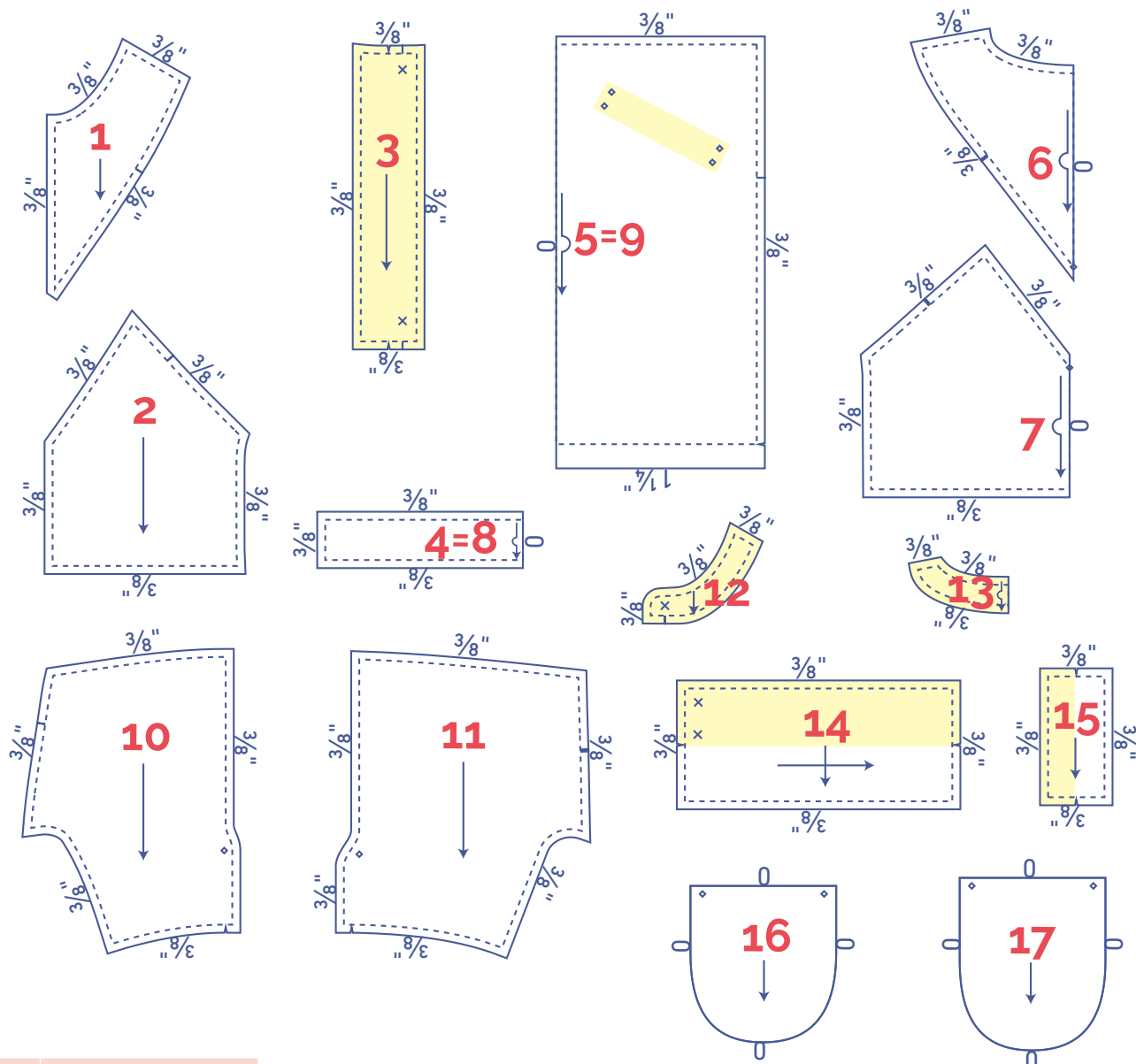
To sew the garment as described in the instructions, draw the illustrated seam allowances around the paper pattern pieces before cutting them out. If you are using a PDF pattern, the pattern can be printed with or without seam allowance.

To find out more, watch the [video](#).

1. yoke front: 2x
2. front: 2x
3. button placket: 2x
4. waistband front: 2x on fabric fold
5. skirt front: 1x on fabric fold
6. yoke back: 1x on fabric fold
7. back: 1x on fabric fold
8. waistband back: 2x on fabric fold
9. skirt back: 1x on fabric fold
10. sleeve front: 2x
11. sleeve back: 2x
12. neck binding front: 4x
13. neck binding back: 2x on fabric fold
14. cuff: 2x
15. welt: 2x (optional)
16. inner pocket: 2x (optional)
17. pocket opening: 2x (optional)

**IMPORTANT**

The pieces highlighted in light yellow have iron-on interfacing attached to the wrong side.



material type	
fabric	<input type="checkbox"/>
iron-on interfacing	<input checked="" type="checkbox"/>

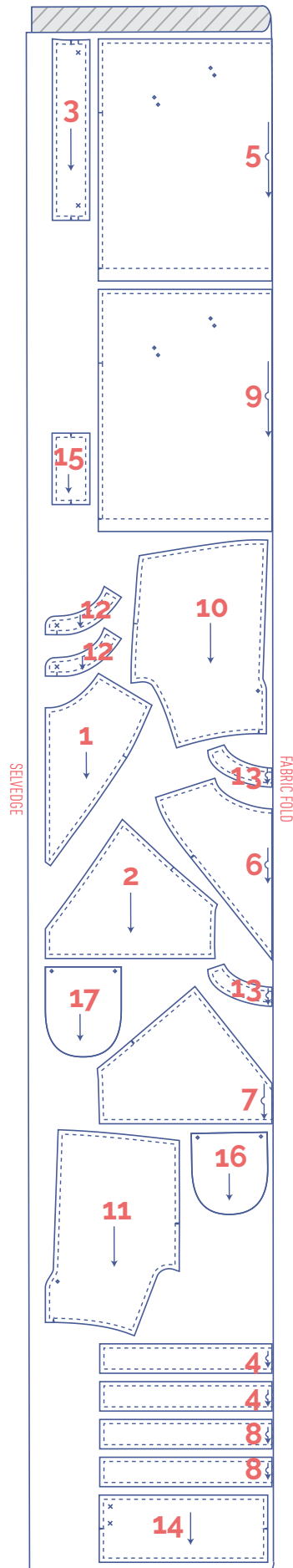
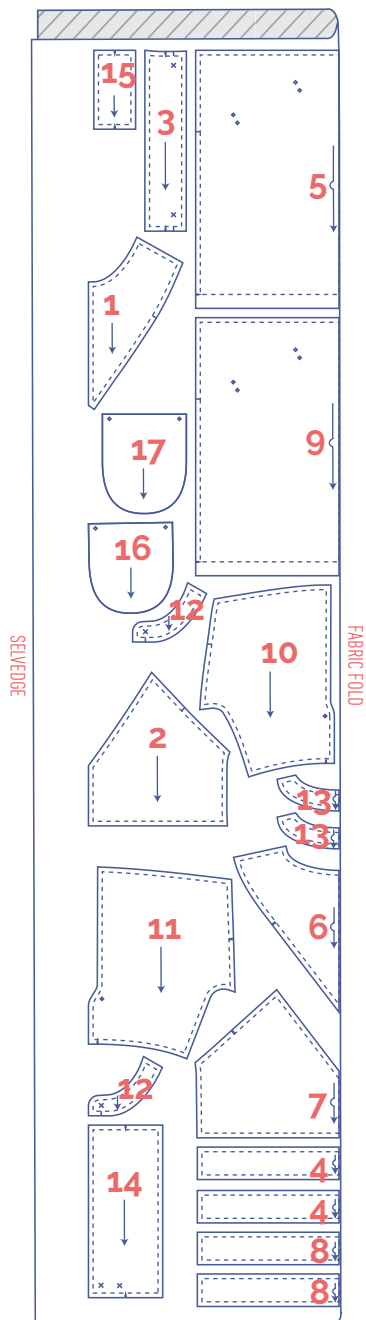
### IMPORTANT

Pattern pieces 4 and 8 are the same. Pattern pieces 5 and 9 are also the same; the only difference is that the marking threads for the pocket are only applicable to the front (5) pattern piece.

**fabric layout – solid fabrics**  
**fabric width 43"**

0 - 14

16 - 28

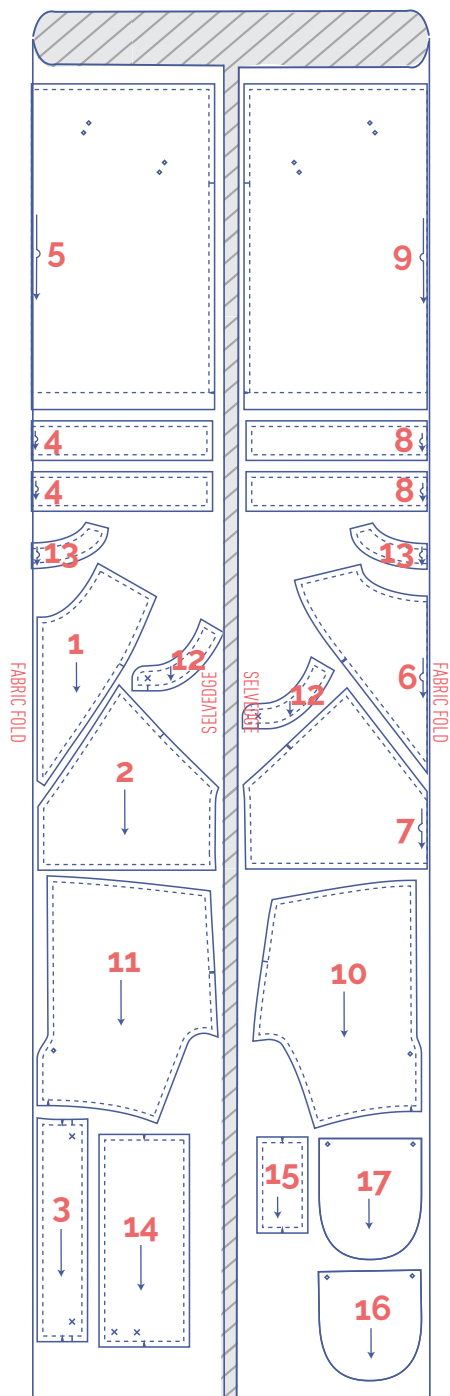


6/30

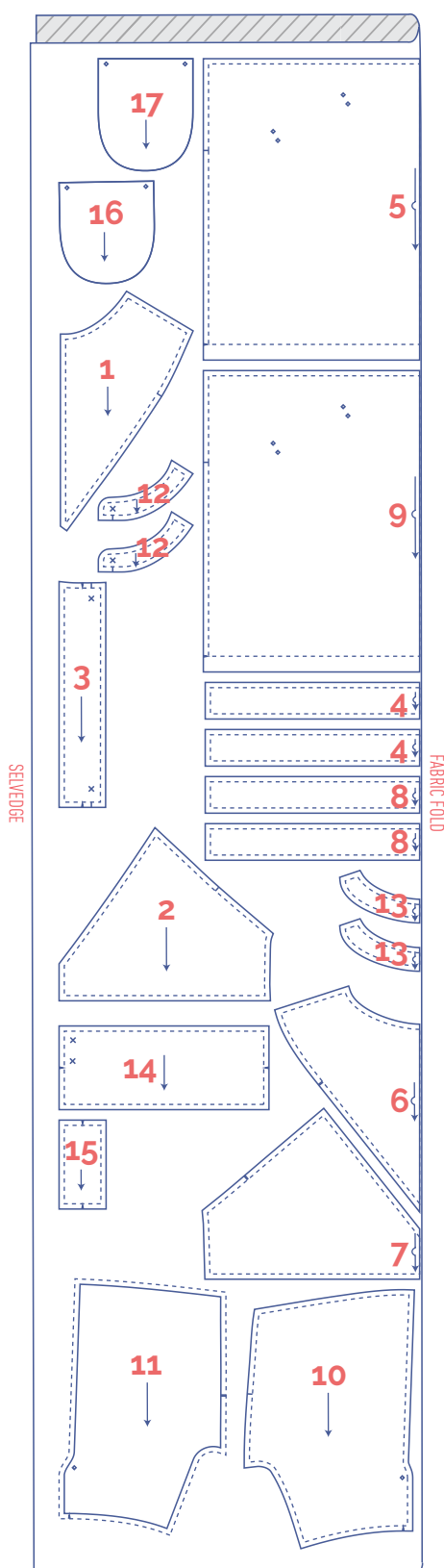
## fabric layout – solid fabrics

### fabric width 55"

0 - 18



20 - 28



## marking pattern pieces



Notch the pattern paper and fabric at the following points



single notch



double notch



V notch



Mark the following points using marking thread



centre point



snap/button

# sewing instructions



The method used to finish the seams depends on the fabric used.  
The pieces are always sewn together with the right sides of the fabric facing, unless stated otherwise.

F front

B back

RF right front 

LF left front 

CF centre front

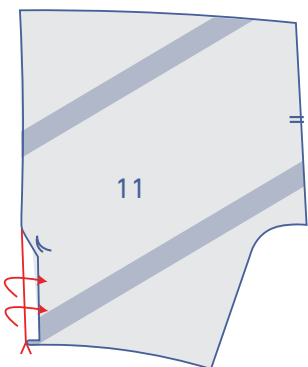
CB centre back

 right side

 wrong side

 elastic

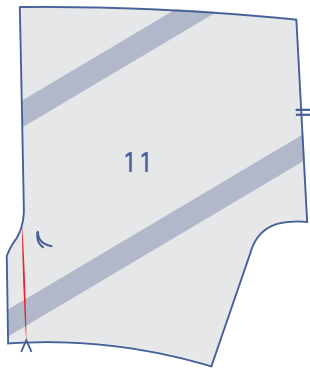
 iron-on interfacing



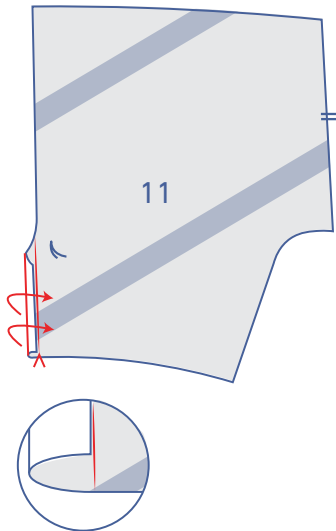
**1**

Press the facing pieces at the slit in the sleeve back (11) towards the wrong side at the V notches.

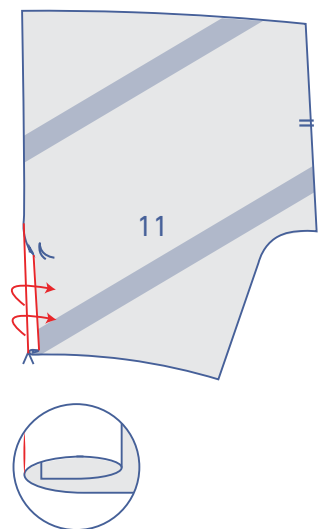




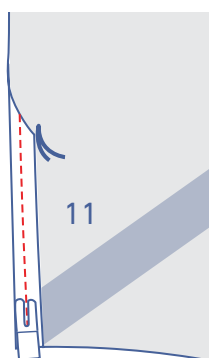
Open back out.



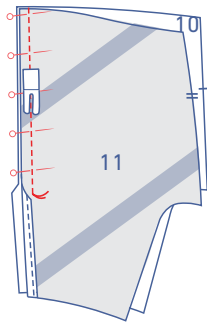
Fold the raw edge to meet the pressed fold line,



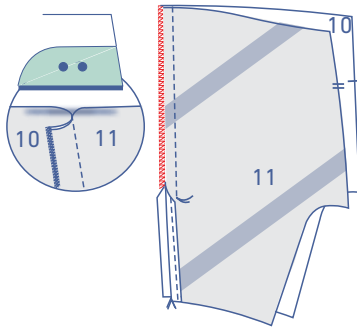
and fold over again.



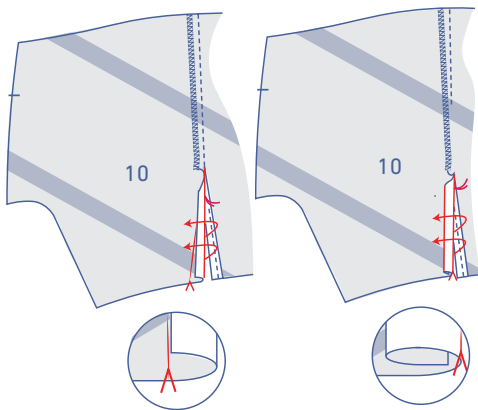
Topstitch into place at presser foot width from the edge.



Pin and sew the sleeve front (10) and sleeve back together up to the marking threads indicating the top of the slit.

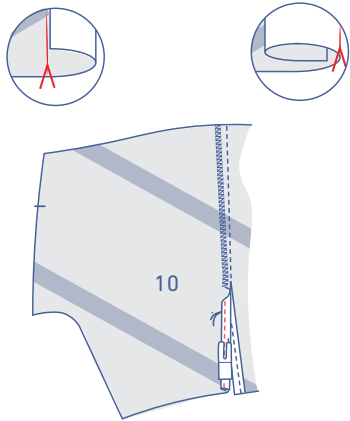


Finish the raw edges together with overlock stitching and press the seam allowance towards the sleeve front.

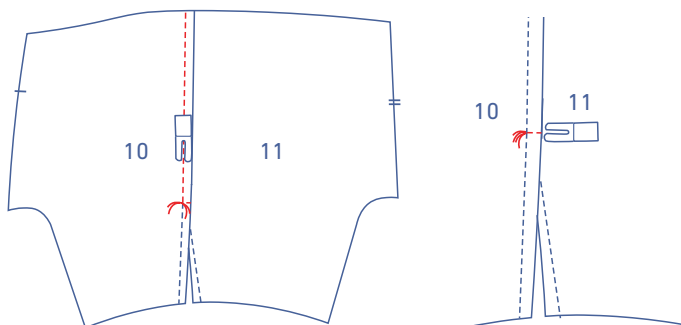


Press the facing at the slit in the sleeve front towards the wrong side at the V notch.

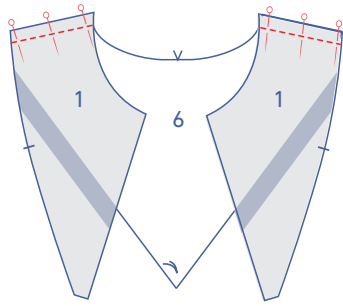
Open back out. Fold the raw edge to meet the pressed fold line, and fold again.



Topstitch into place at presser foot width from the edge.

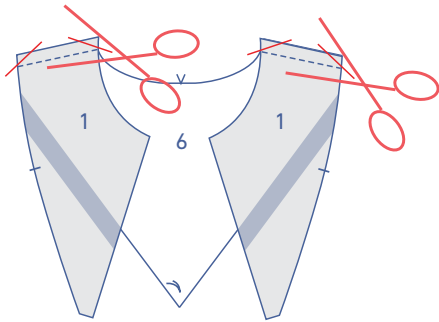


Topstitch the sleeve front at presser foot width from the seam up to the marking thread of the slit. Sew a reinforcement stitch between the topstitching and the seam.

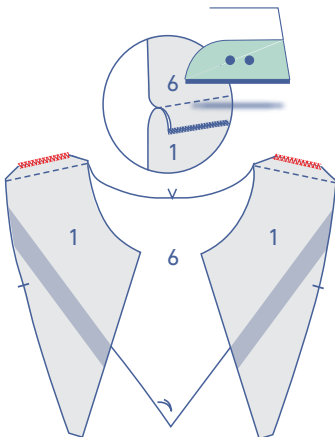


## 2

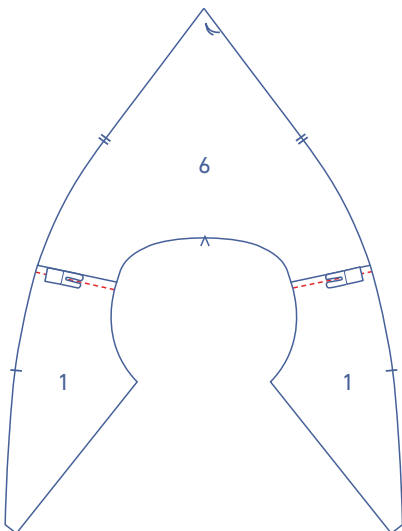
Pin and sew the shoulder seams of the yoke front (1) to the yoke back (6).



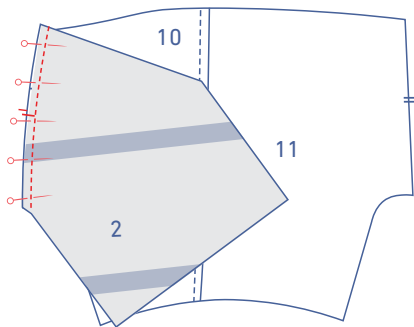
Trim the seam allowance diagonally at the tips to prevent the fabric from bunching.



Finish the raw edges together with overlock stitching and press the seam allowance towards the yoke front.

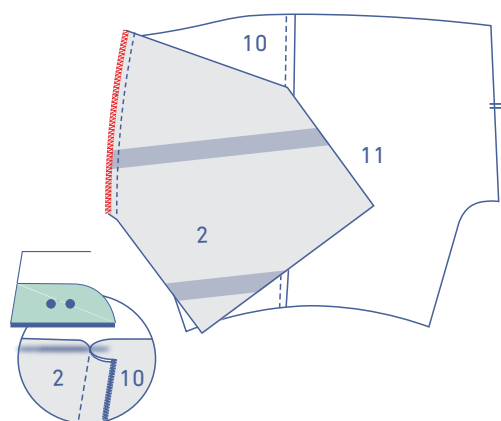


Topstitch the yoke front at presser foot width from the seam.

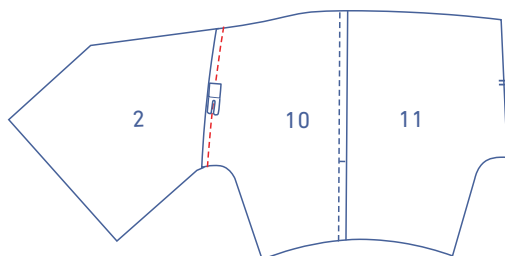


### 3

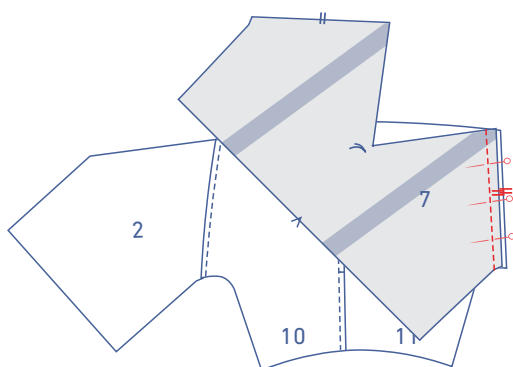
Pin and stitch the front (2) to the sleeve, matching the single notches.



Finish the raw edges with overlock stitching and press the seam allowance towards the sleeve.

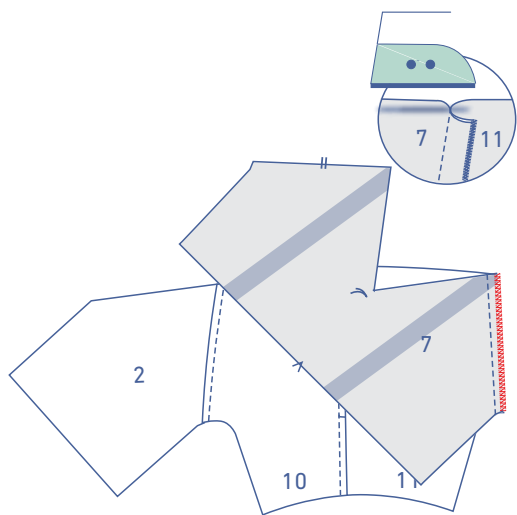


Topstitch the sleeve front at presser foot width from the seam.

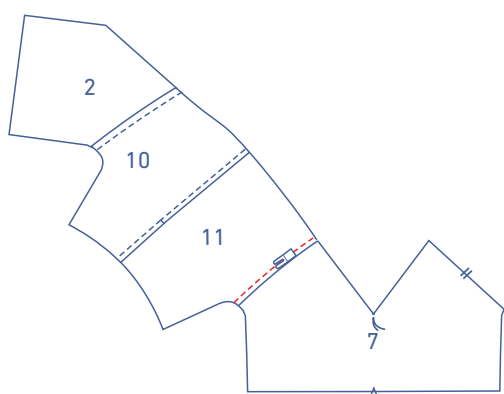


Pin and stitch the back (7) to the sleeve, matching the double notches.

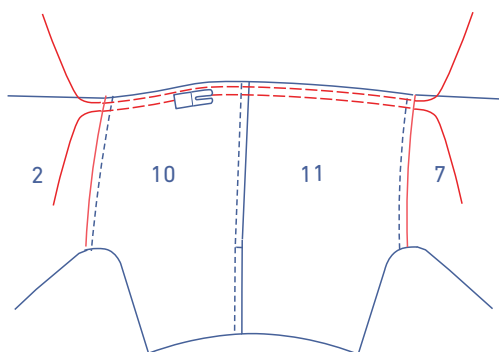
Finish the raw edges with overlock stitching and press the seam allowance towards the sleeve.



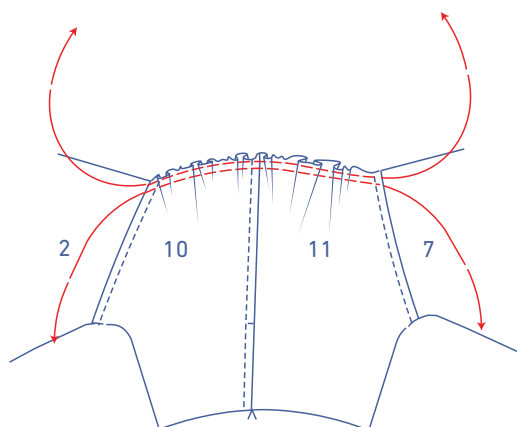
Topstitch the sleeve back at presser foot width from the seam.

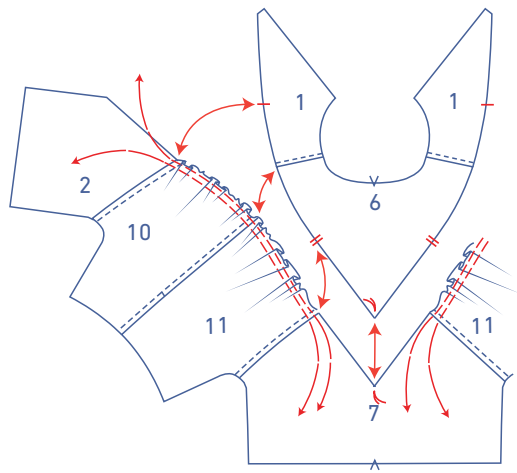


Sew 2 parallel lines of stitching between the indicated seams, using a long stitch at a low thread tension. Leave a length of thread at the start and end of the stitching.

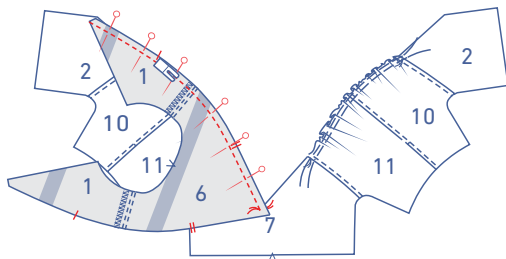


Carefully tug the bobbin threads to gather the fabric.

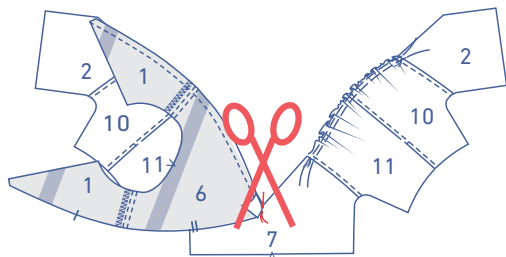




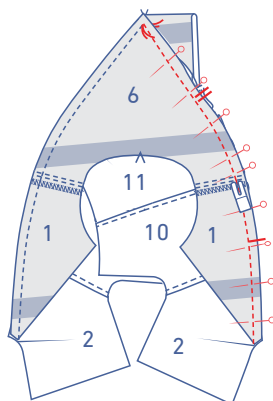
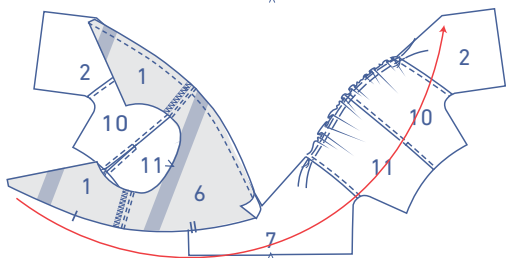
Distribute the gathers so that the sleeve seams match the notches in the yoke front and back.



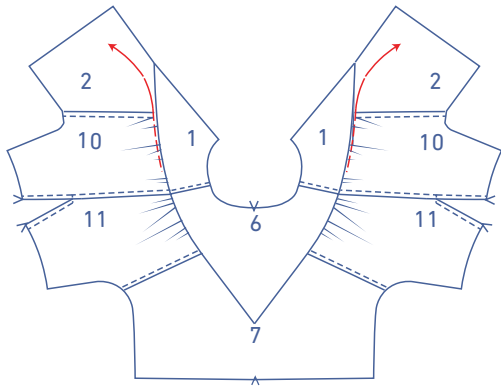
Pin the front, back, and sleeves to the yokes. Sew right up to the indicated marking thread and leave the needle in the fabric there.



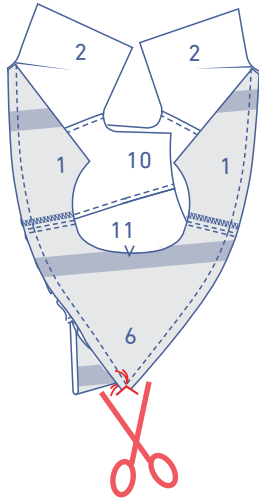
Raise the presser foot, fold back the seam allowance of the yoke back over, and snip into the seam allowance of the back until right before the marking thread. Pivot the garment and lower the presser foot back down.



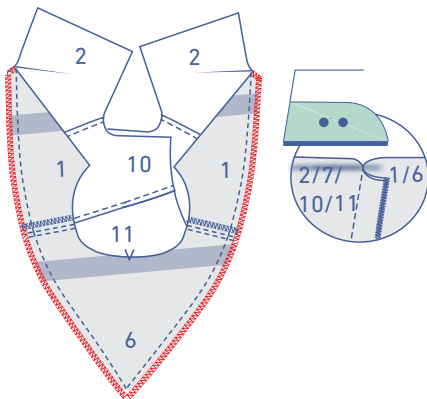
Pin and continue stitching the other side until you reach the CF.



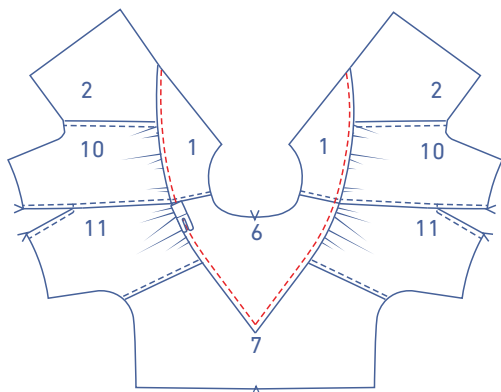
Then remove the gathering threads.



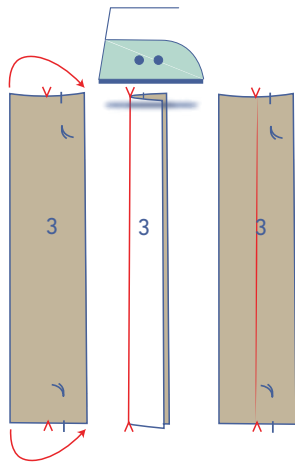
Snip diagonally into the seam allowance at the tip of the V.



Finish the raw edges together and press the seam allowance towards the yoke.

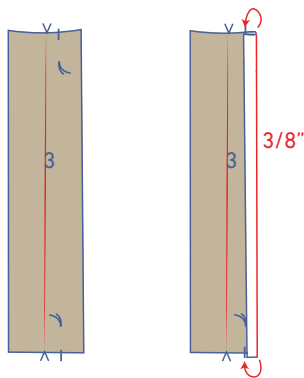


Topstitch the yoke at presser foot width from the seam.

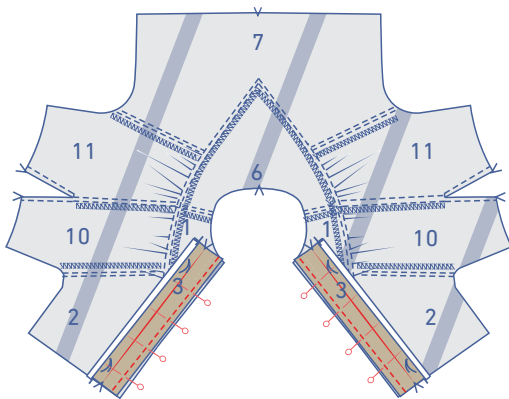


## 4

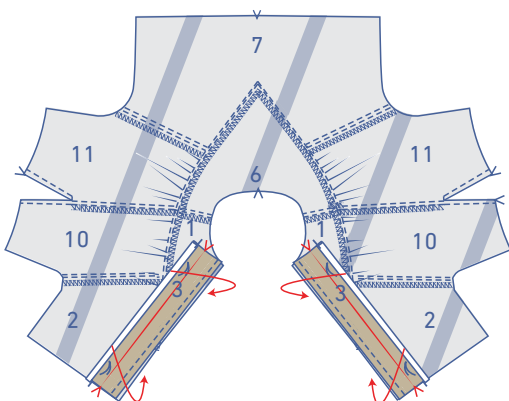
Press the button placket (3) in half with the long ends touching and the wrong sides facing. Open back out.



Press one long end  $\frac{3}{8}$ " towards the wrong side.

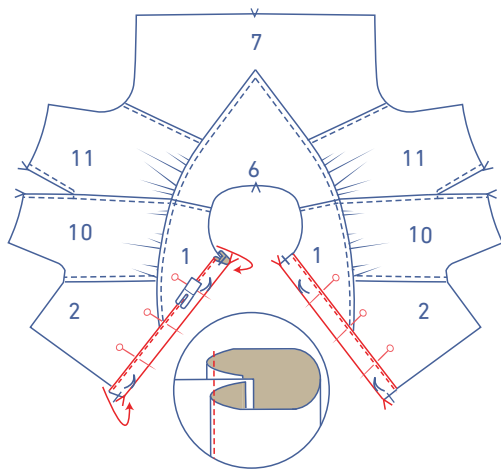


Pin and sew the unpressed raw edge of the button placket to the wrong side of the garment. Note that the right side of the button placket is facing the wrong side of the garment.

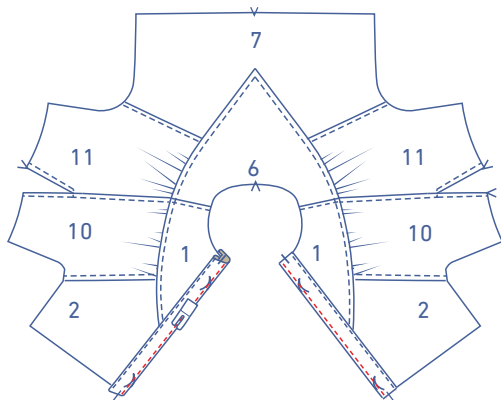


Fold the button placket over towards the right side and place the fold line of the pressed seam allowance over the previous stitching.

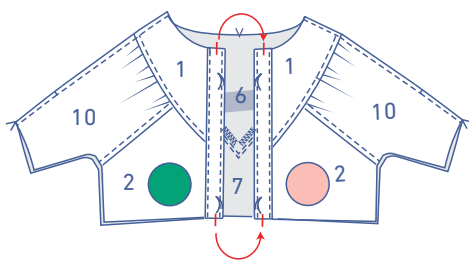




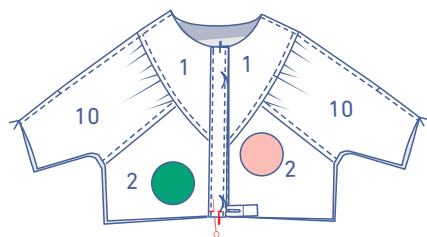
Edgestitch into place.



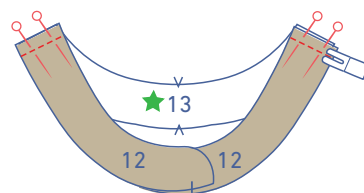
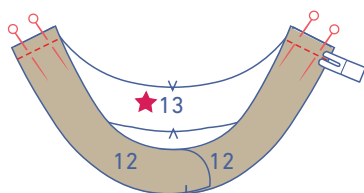
Topstitch right next to the indicated edge.



Place the RF (green circle) on top of the LF (pink circle), matching the single notches that mark the CF.

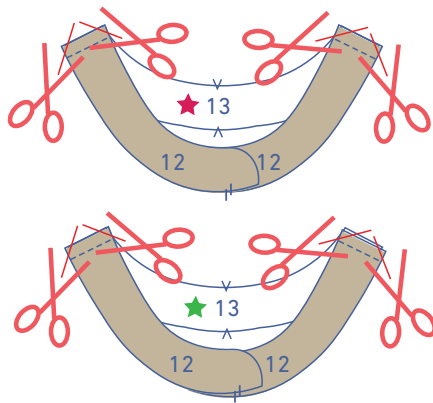


Pin and sew the RF to the LF at the bottom of the button placket at presser foot width from the edge.

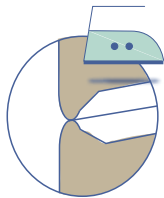


## 5

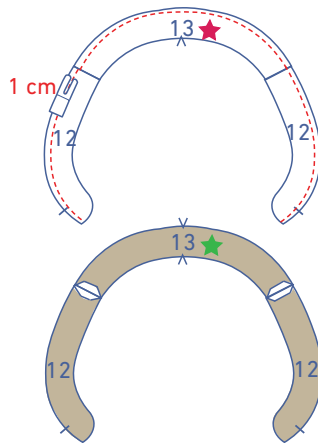
Make two neck bindings. Pin and sew the shoulder seams of the neck binding front (12) and neck binding back (13) pieces together.



Trim the seam allowance diagonally at the tips to prevent the fabric from bunching.

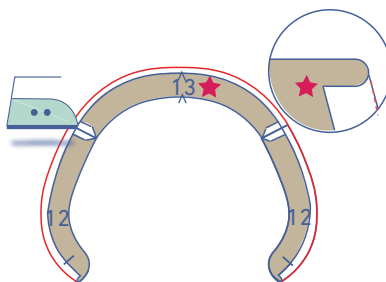


Press the seam allowance open.

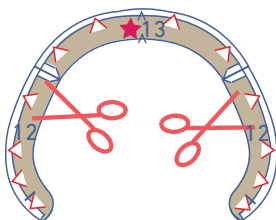


Sew one of the neck binding pieces at 1 cm from the indicated contoured edge. We've marked this neck binding piece with a red star.

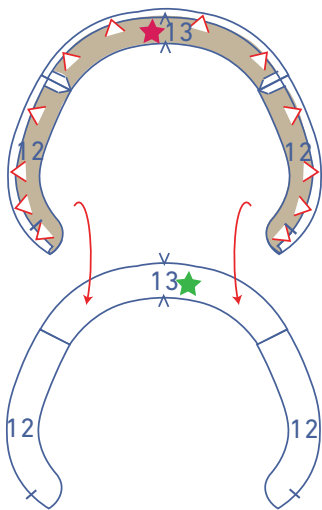
The other piece of neck binding has been marked with a green star.



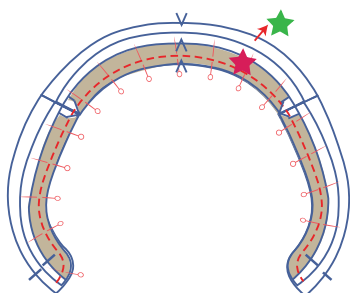
Press the bottom of the red star neck binding over to the wrong side at the stitching.



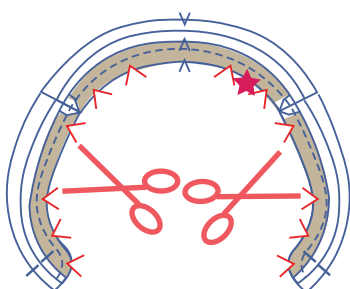
Trim any excess seam allowance to create a nice curve.



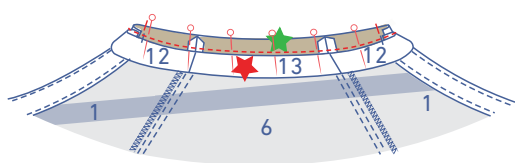
Place the red star neck binding on top of the green star neck binding, right sides together.



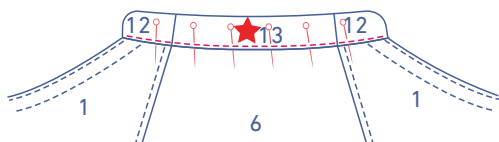
Pin and sew the contours where indicated.



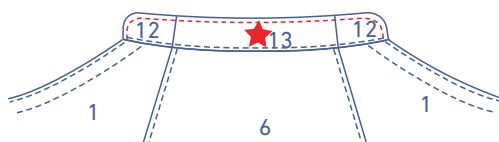
Cut notches into the seam allowance to enable the neck binding to lie flat.



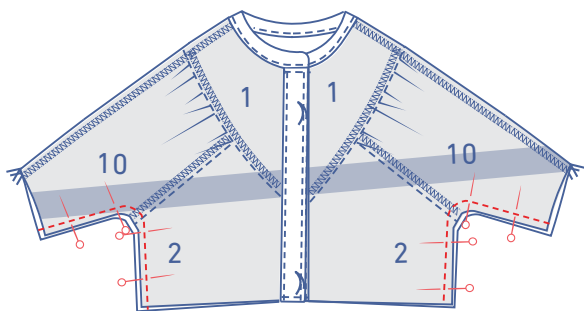
Pin and sew the green star neck binding to the neckline along the wrong side of the dress. Note that the right side of the neck binding is facing the wrong side of the garment.



Fold the red star neck binding over towards the right side of the neckline. The fold line should be directly over the previous stitching. Pin and sew into place.

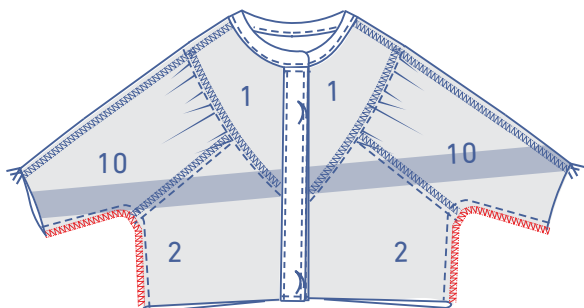


Finish stitching the neck binding right next to the edge.

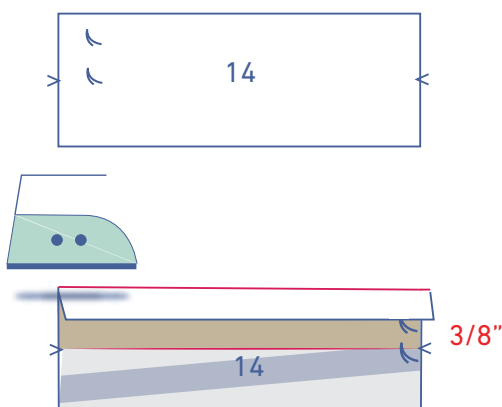


## 6

Pin and sew the underarm and side seams.

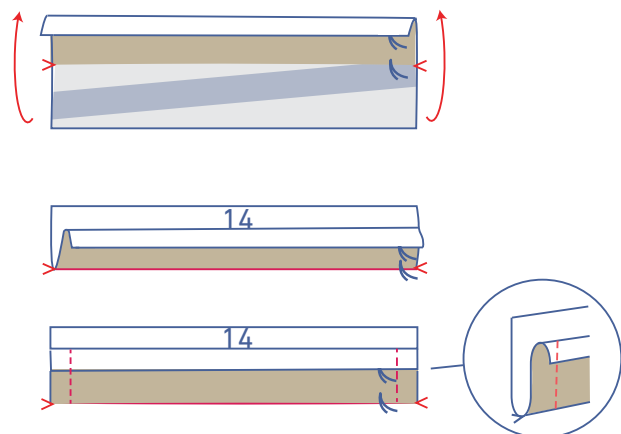


Finish the raw edges with overlock stitching.

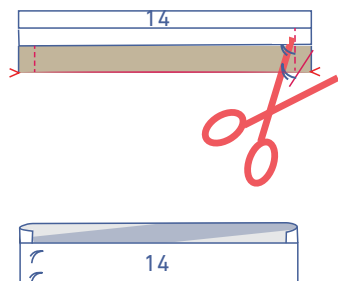


## 7

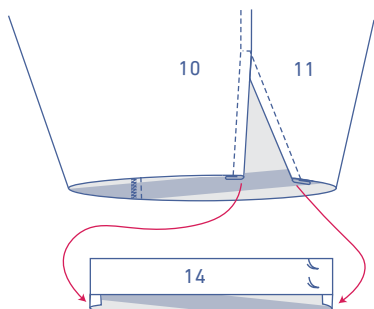
Press  $\frac{3}{8}$ " of the long end of the cuff (14) towards the wrong side.



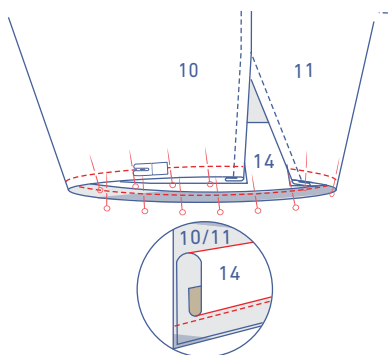
Fold the cuff in half at the V notches with the right sides of the fabric facing. Sew the short ends.



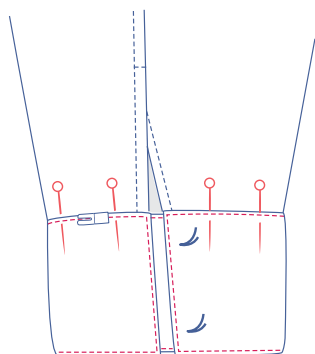
Trim the seam allowance and turn the right way out.



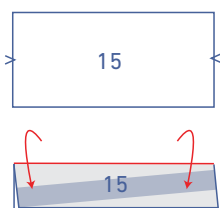
Slide the cuff into the bottom of the sleeve as shown so that the unpressed raw edge of the cuff is aligned with the bottom of the sleeve.



Pin and sew along the wrong side of the sleeve.



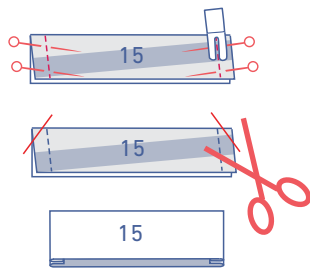
Fold the cuff out to the right side of the sleeve and place the fold line directly over the previous stitching. Sew into place next to the edge. Finish by edge stitching all the way around.



## 8

### OPTIONAL

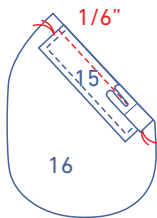
Fold the welt (15) in half lengthwise with the right sides facing.



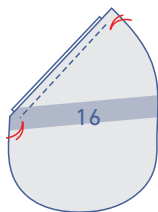
Sew the short ends. Trim the corners and turn the right way out.



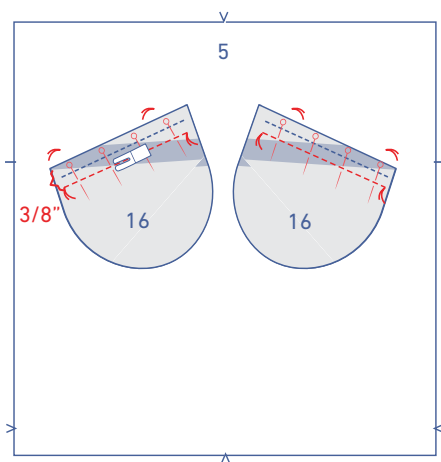
Topstitch at presser foot width from the finished edges (do not stitch the raw edges together).



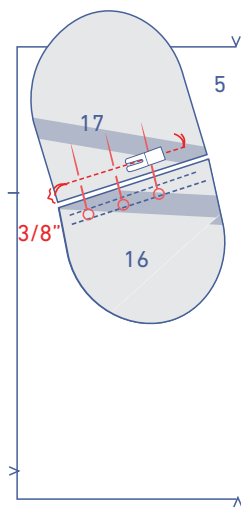
Place the welt on top of the right side of the inner pocket (16), lining up the raw edges of the welt with the raw edge of the inner pocket. The finished edges of the welt should be right between the marking threads. Stitch into place at  $\frac{1}{6}$ ".



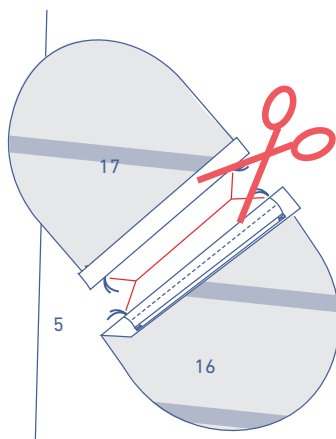
Turn over the inner pocket + welt so that the wrong side of the inner pocket is facing up with the welt underneath it.



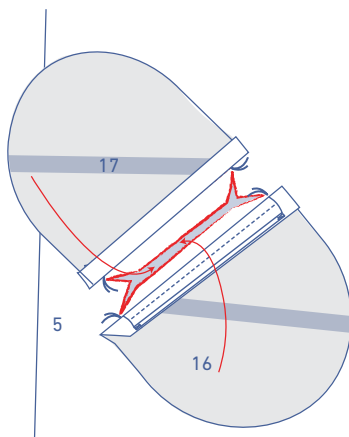
Place the inner pocket (+welt) on the right side of the inner skirt piece front (5), matching the marking threads. Sew into place between the marking threads at  $\frac{3}{8}$ " from the raw edge of the inner pocket (+ welt).



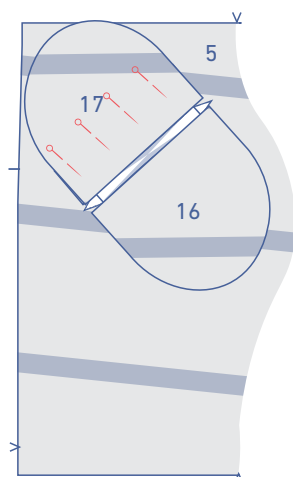
Pin the marking threads of the pocket opening (17) (with the right side facing down) to the top marking threads of the skirt piece front as shown. Sew into place between the marking threads at  $\frac{3}{8}$ " from the raw edge of the pocket opening.



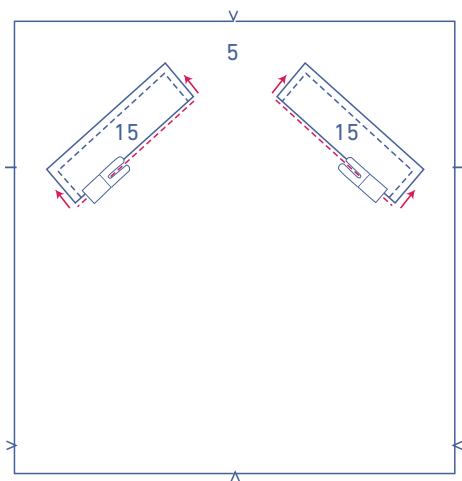
Fold the straight edges of the pocket pieces over and snip into the skirt piece front between the 2 lines of stitching, starting and stopping at  $\frac{3}{4}$ " from the marking threads. At each end of the cut you just made, snip diagonally up to the marking thread (= 4 cuts) Make sure only to cut into the skirt piece front!



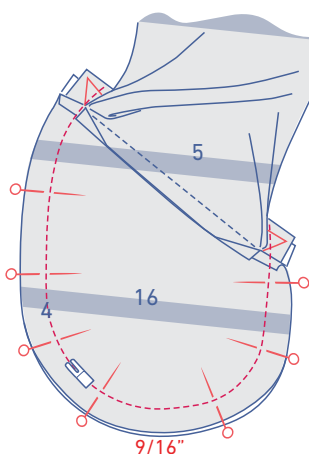
Push the pocket pieces + the triangles (created by your cutting) on the right side through to the wrong side of the skirt.



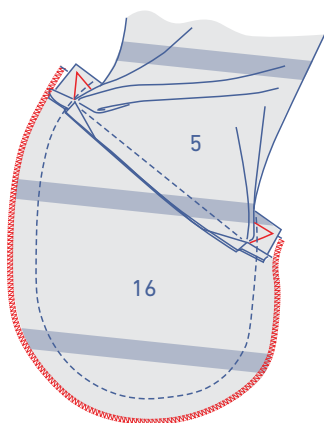
Turn the skirt piece front over so that the wrong side is facing up. Fold the pocket opening up and temporarily pin into place.



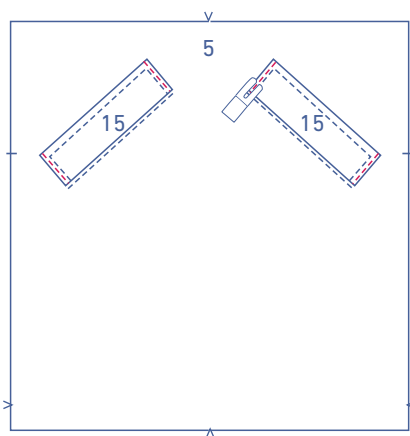
Neatly pin the welt and inner pocket along the right side of the skirt, facing the direction indicated. Topstitch the skirt piece front just under the seam of the welt.



Fold the front over and sew the contours of the pocket pieces (+ the welt corners) together at  $\frac{9}{16}$ " from the edge, making sure you catch the triangles.

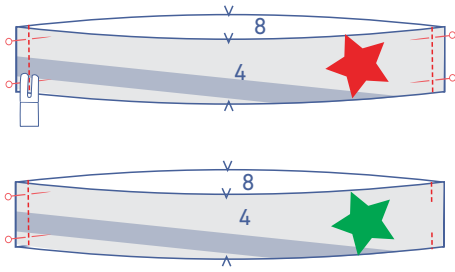


Finish the raw edges with overlock stitching.



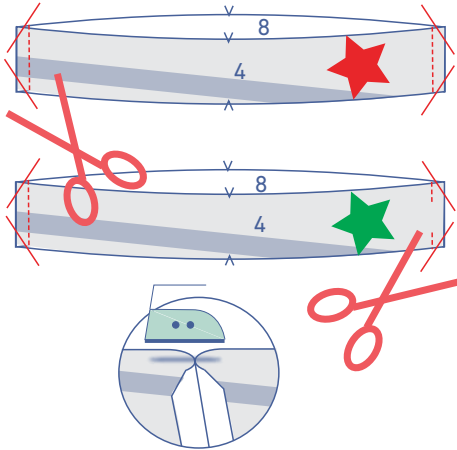
Sew the short ends of the welt to the skirt piece front at  $\frac{1}{8}$ " from the edge.





## 9

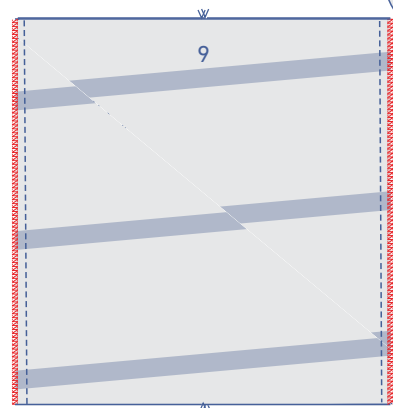
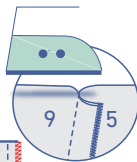
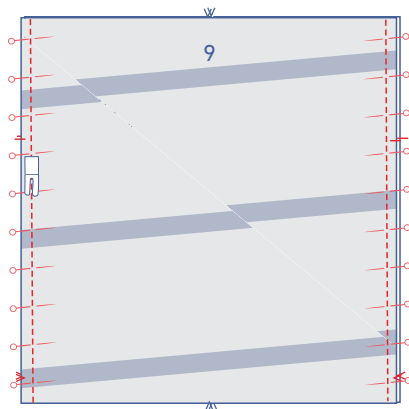
Make two waistbands. Pin and sew the side seams of the waistband front (4) and waistband back (8) together. Leave an opening in one of the waistbands to thread the elastic through later. We marked this waistband with a green star.



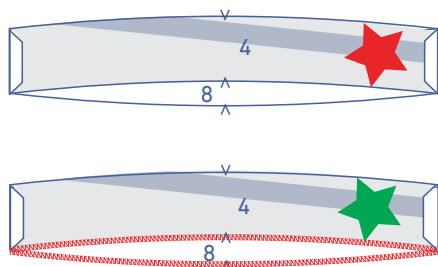
Trim the seam allowance diagonally at the tips to prevent the fabric from bunching. Press the seam allowance open.

## 10

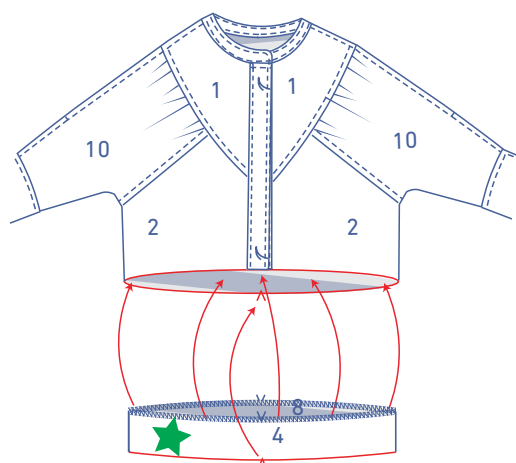
Pin and stitch the side seams of the skirt piece front and back (9) together.



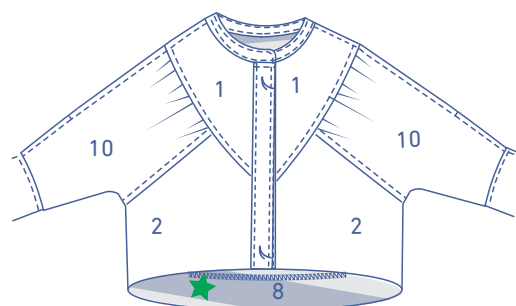
Finish the raw edges with overlock stitching. Press the seam allowance towards the front skirt.



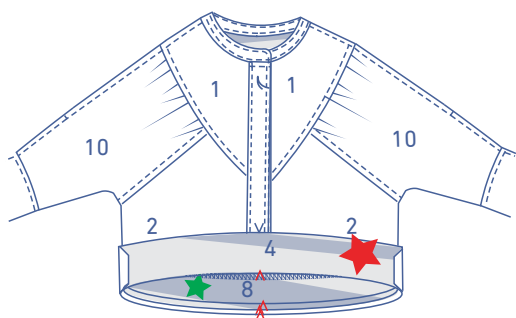
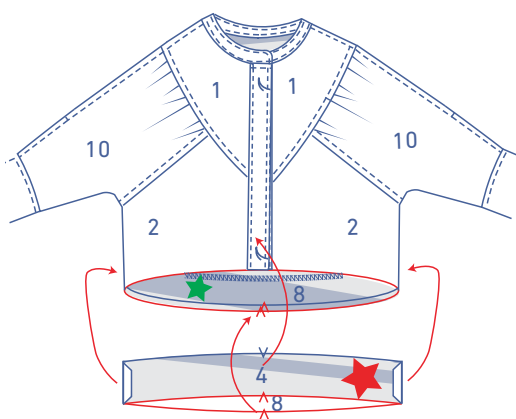
Finish the bottom of the green star waistband with overlock stitching.

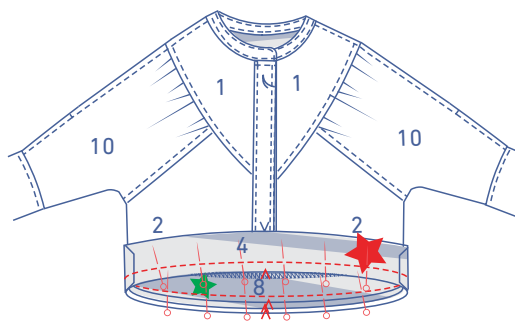


Slide the green star waistband into the bodice so that the unoverlocked end is level with the bottom of the bodice, matching seams and notches.

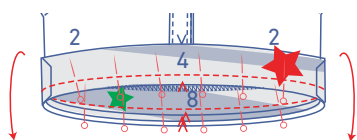


Now, slide the red star waistband over the bottom of the bodice so that the right sides are facing, matching notches.

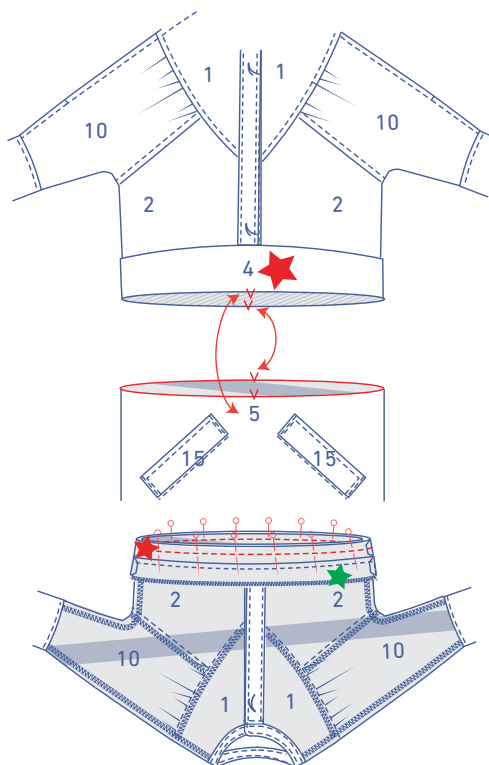




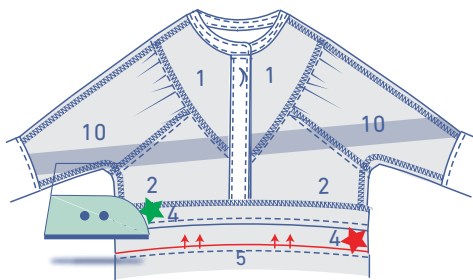
Pin and sew to join the waistbands to the bodice.



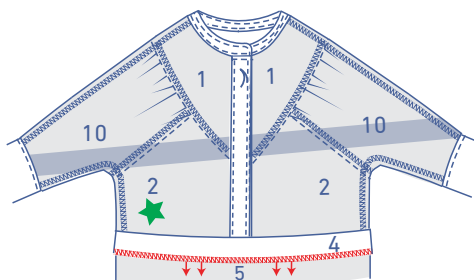
Fold the red star waistband down.



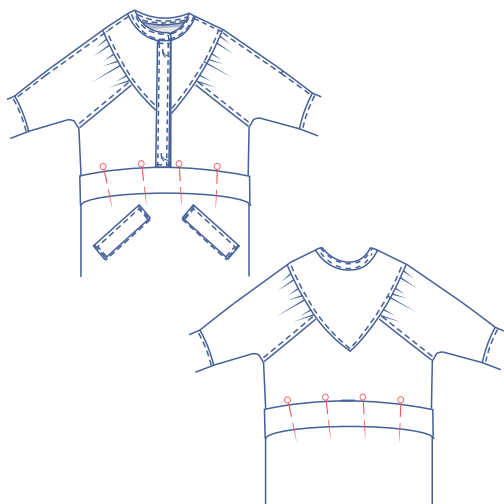
Slide the skirt into the bodice so right sides of the skirt and the red star waistband are facing and the raw edge are matching. Pin and sew together.



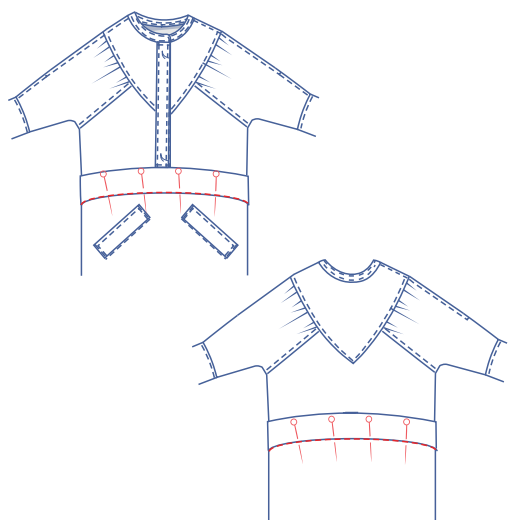
Press the seam allowance of the lapped seam (of the red star waistband + skirt) up.



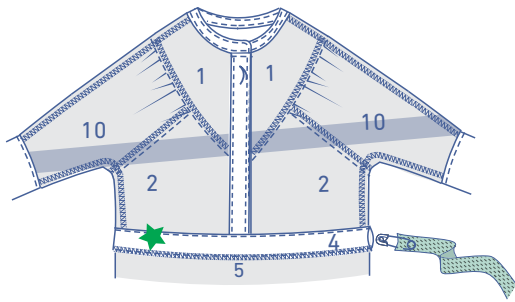
Fold the green star waistband back down.



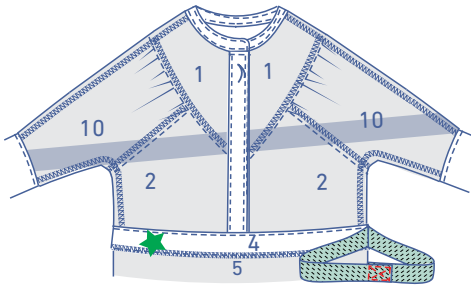
Neatly pin the waistbands together along the right side of the garment.



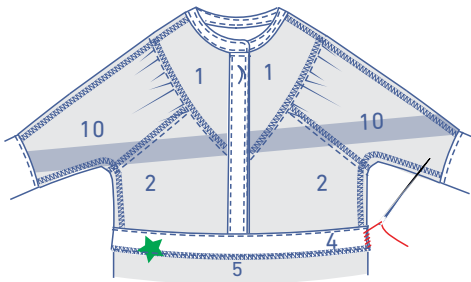
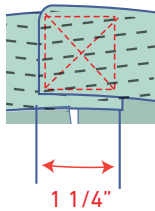
Stitch in the ditch along the seam of the waistband + skirt.



Thread the elastic through the waistband through the opening in the side seam on the inside of the garment.

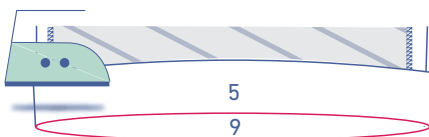


Overlap 1 1/4" of the ends and sew into place with a Box X stitch. Pull the elastic all the way through the casing.

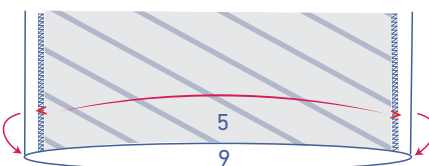


Sew the side seam closed with just a few stitches by hand.

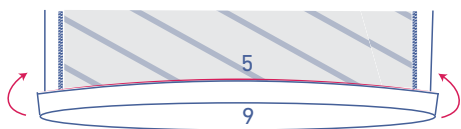
## 11



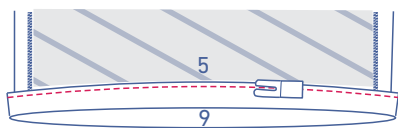
Press the hem allowance over at the V notches



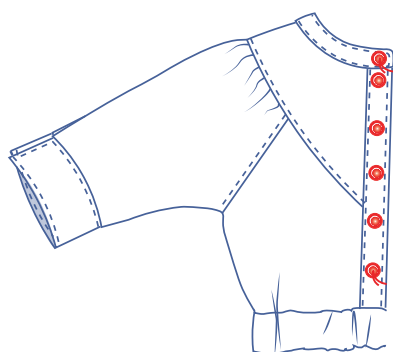
and then open back out.



Fold over the raw edge to the wrong side to meet the pressed fold line and fold over again.



Edgestitch the hem allowance into place.



## 12

Attach the snaps where indicated.

