

Carmen by Fibre ⚡ood



Carmen by Fibre ⚡ood



XS - XXXL

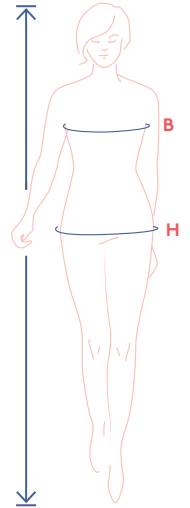
Winter is when we love to turn up the cosy and make everything nice and toasty. Carmen is a minimalist lined winter coat with a collar and gorgeous lapels. The subtly shaped sleeves are the showstoppers on this long coat. Concealed press studs and the quirky tie detail complete the look. We're willing to bet that this is going to be your new feel-good coat.



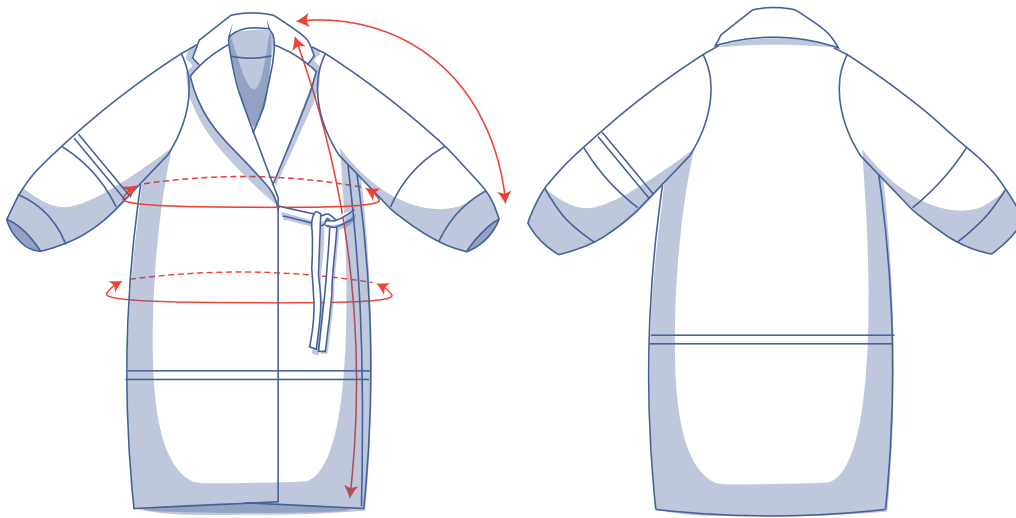
size chart (in inches)

size	XS		S		M		L		XL		XXL		XXXL		
	0	2	4	6	8	10	12	14	16	18	20	22	24	26	28
body height	5'25"	5'38"	5'45"	5'48"	5'51"	5'54"	5'58"	5'61"	5'64"	5'64"	5'64"	5'64"	5'64"	5'64"	5'64"
B (bust)	29.9	31.5	33.1	34.6	36.2	37.8	39.4	40.9	43.3	45.7	48	50.4	52.8	55.1	57.5
H (hips)	33.9	35.4	37	38.2	39.4	40.6	41.7	42.9	45.3	47.2	49.2	51.2	53.1	55.1	57.1

Choose your size based on your **bust measurement**. Is your hip measurement wider than what's listed in the size chart? If so, check the hip measurement in the size chart below to verify whether there is enough room or whether the pattern needs to be altered. It's easy to do. When tracing the pattern, simply trace from the line of one size to the line of the other.



pattern measurements (in inches)



This chart's measurements are the pattern measurements based on the fabric type and serve as a reference. Ease has been added to the width measurements (in addition to the exact body measurements) for a more comfortable fit. Carmen is designed to have a **relaxed cut**. Depending on the preferred cut, you could decide to go a size smaller or larger than the recommended size.

== shorten or lengthen the pattern here

size	XS	S	M	L	XL	XXL	XXXL
length	44.8	45.2	45.6	46.4	47.5	48.5	49.1
sleeve length*	27.7	27.9	28.2	28.4	28.7	28.9	29.2
bust	37.5	40.7	43.8	46.9	50.8	55.5	60.1
hips	42.6	45.7	48.9	52	55.9	60.5	65.2

* Including shoulder length.

Compare the stated lengths to the measured or desired lengths. **Lengthen** or **shorten** the coat and/or the sleeves by cutting the pattern pieces at the indicated double lines. Then either increase the distance between the cut pieces by the desired amount (to lengthen) or overlap the pieces (to shorten). Make sure that the CF and CB lines and the side seams are always straight.



IMPORTANT

Adjust the amount of fabric to be used based on these alterations.

supplies



- Thread
- Iron-on interfacing: max. 3 ½ yd
- Sew-on snap fasteners (Ø 7/8"): 2
- Lining fabric: see table
- Fabric: see table

lining fabric		XS	S	M	L	XL	XXL	XXXL
fabric width 43"	yd	2	2 ½	3	3	3 ½	4	4
fabric width 55"	yd	2	2	2	2	2	3	3

The corresponding fabric layout can be found on page 6 of these sewing instructions.

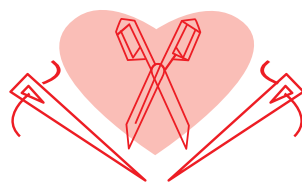
fabric		XS	S	M	L	XL	XXL	XXXL
fabric width 43"	yd	4 ¼	4 ¼	4 ½	4 ½	5 ½	5 ¾	5 ¾
fabric width 55"	yd	3	3 ¼	3 ¼	3 ½	3 ¾	4	4

The corresponding fabric layout can be found on page 6 of these sewing instructions.

fabric advice Carmen can be made in all kinds of coat fabrics. We're a fan of woollen fabrics since they'll keep you nice and toasty in the winter. Make Carmen in a solid for a classy look or, if you're feeling daring, go for a bouclé or a plush, long haired faux fur instead. Intent on being on-trend? Checked fabric or an animal print should be your go-to.



Proud to be #Sewista

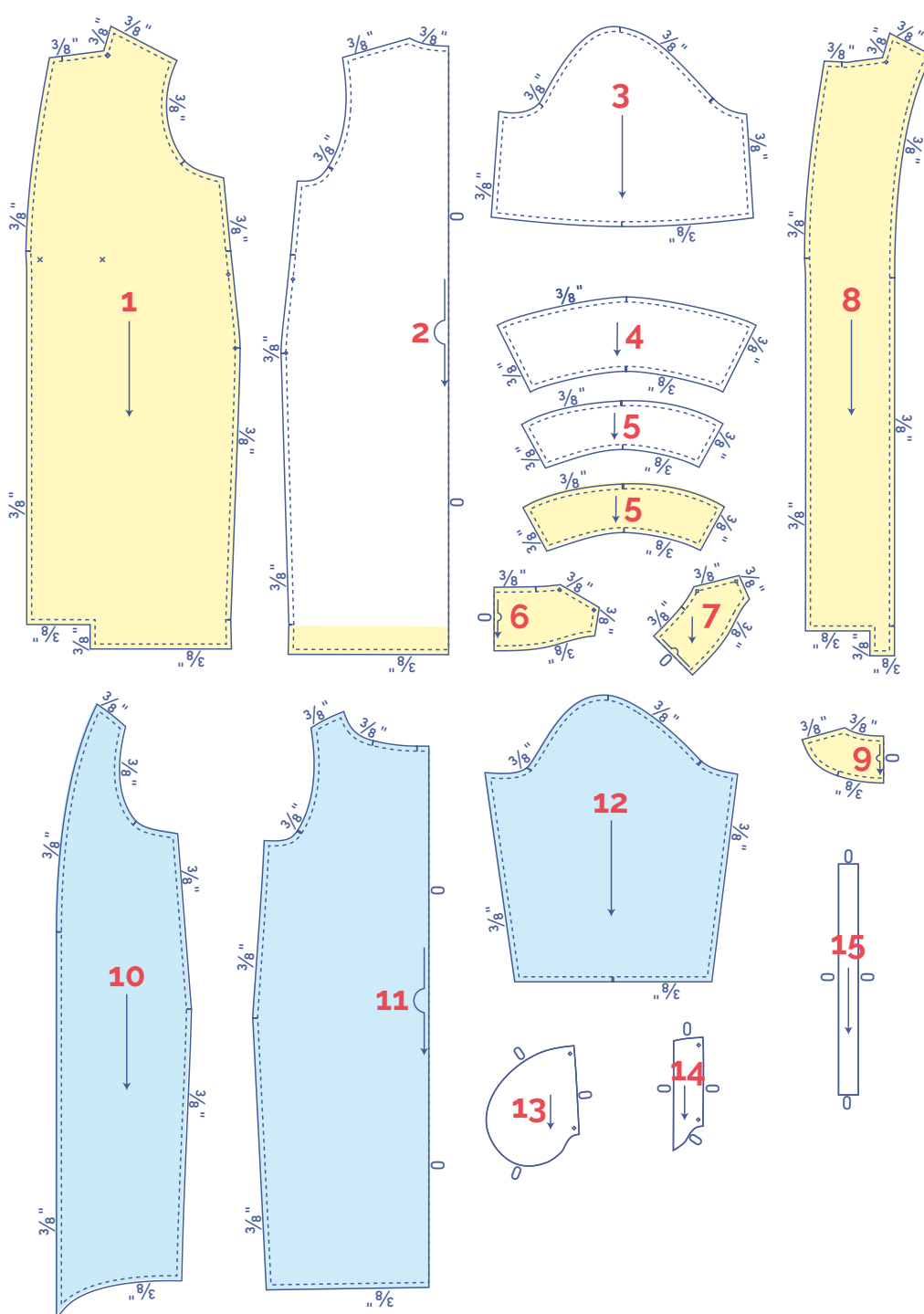


pattern pieces & seam allowances (in inches)

To sew the garment as described in the instructions, draw the illustrated seam allowances around the paper pattern pieces before cutting them out. If you are using a PDF pattern, the pattern can be printed with or without seam allowance.

To find out more, watch the [video](#).

1. front: 2x
2. back: 1x on the fabric fold
3. sleeve top piece: 2x
4. sleeve middle: 2x
5. sleeve bottom: 4x (2 of 4 are interfaced)
6. upper collar: 1x on the fabric fold
7. under collar: 1x on the fabric fold
8. facing F: 2x
9. facing B: 1x on the fabric fold
10. lining F: 2x
11. lining B: 1x on the fabric fold
12. lining sleeve: 2x
13. pocket: 4x
14. pocket opening: 2x
15. tie: 2x



TIP 1!





The undercollar is smaller than the upper collar and is cut on the bias. Being cut on the bias makes the undercollar more flexible, causing it to tug the lapped seam at the bottom. The result is that the seam isn't visible from the right side.

TIP 2!

Don't like bulky fabric around your neck? Make the undercollar in a thinner fabric.

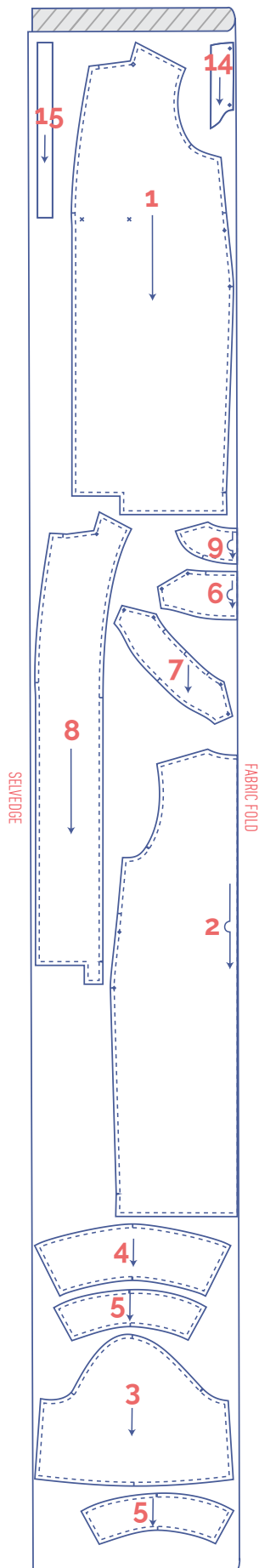
IMPORTANT

The pieces highlighted in light yellow have iron-on interfacing attached to the wrong side.

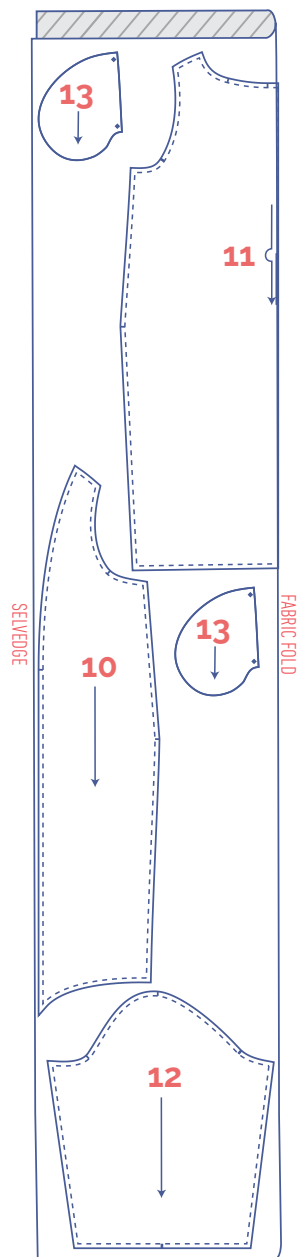
 material type	
	fabric
	light-weight fabric or lining
	iron-on interfacing

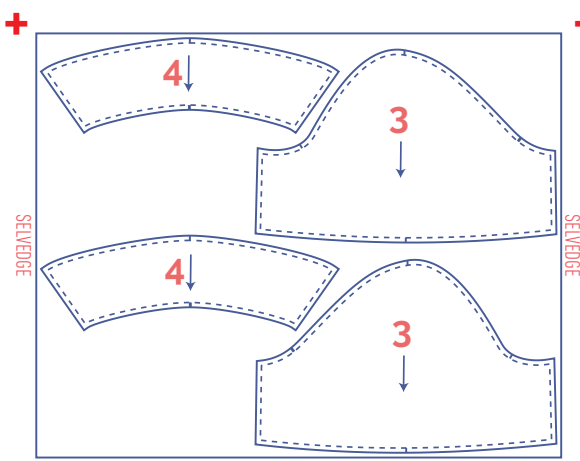
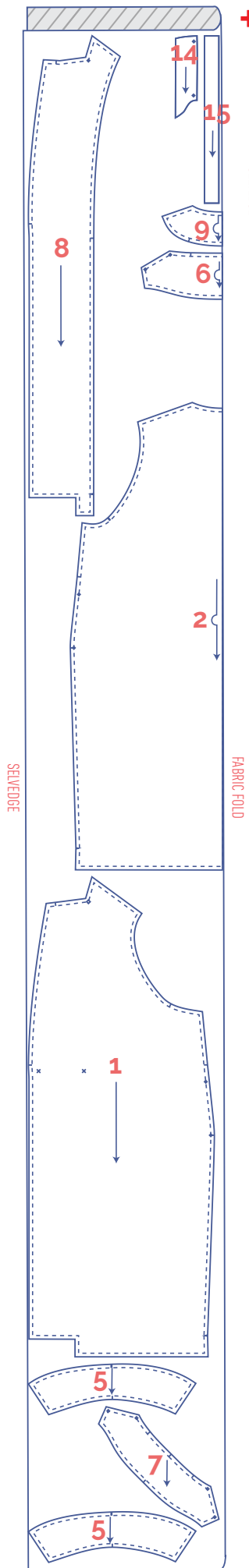
fabric layout – solid fabrics
fabric width 43"

XS - L

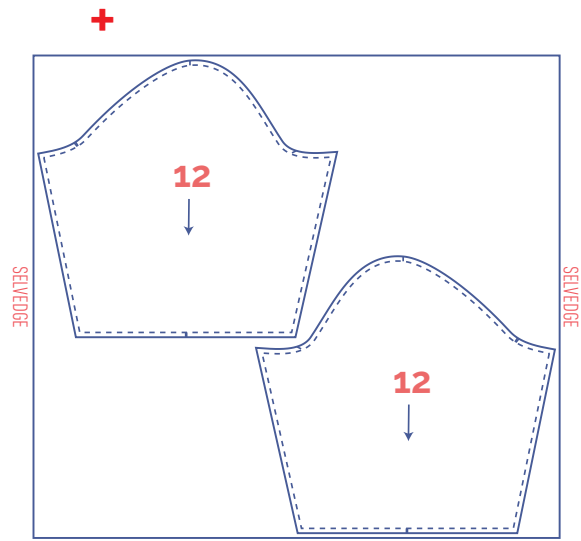
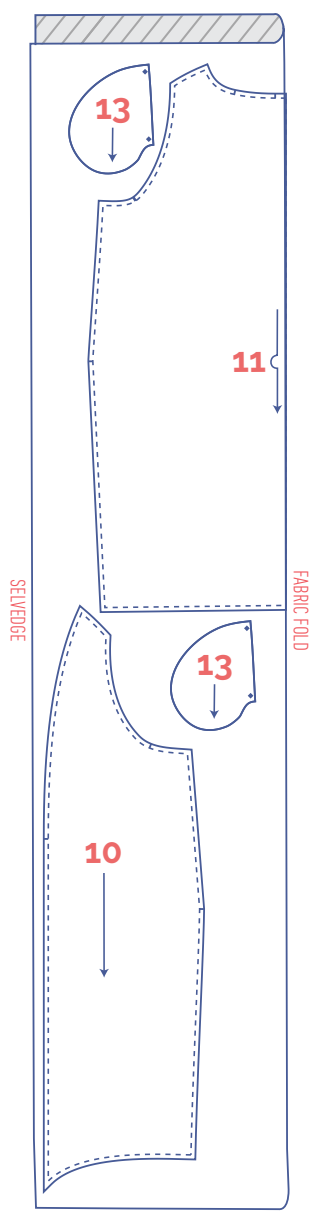


+ lining fabric layout
fabric width 43"





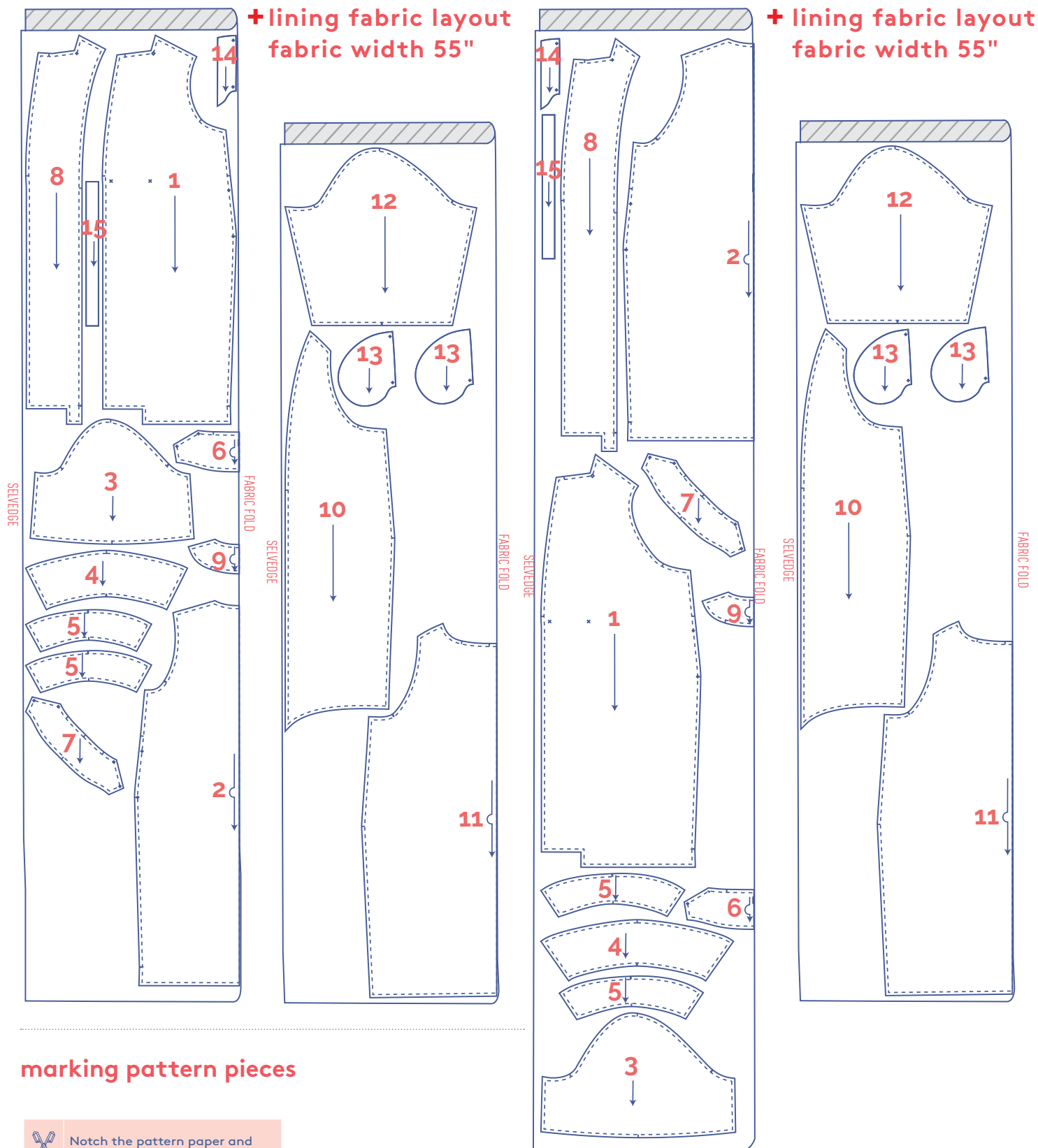
+ lining fabric layout
fabric width 43"



fabric layout – solid fabrics fabric width 55"

XS - L

XL - XXXL



marking pattern pieces

	Notch the pattern paper and fabric at the following points
I	single notch
II	double notch
V	V notch

	Mark the following points using marking thread
	centre point
	snap/button

sewing instructions



The method used to finish the seams depends on the fabric used.
The pieces are always sewn together with the right sides of the fabric facing, unless stated otherwise.

F front

B back

RF right front ●

LF left front ●

CF centre front

CB centre back

□ right side

▨ wrong side

□ lining right side

▤ lining wrong side

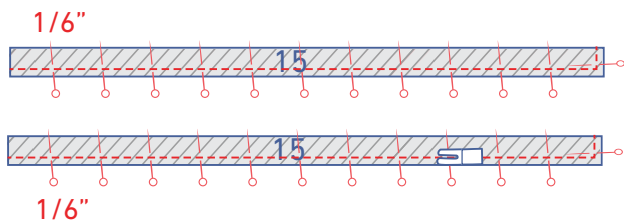
▨ iron-on interfacing



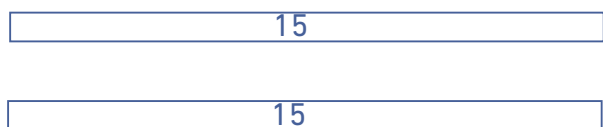
1

OPTIONAL

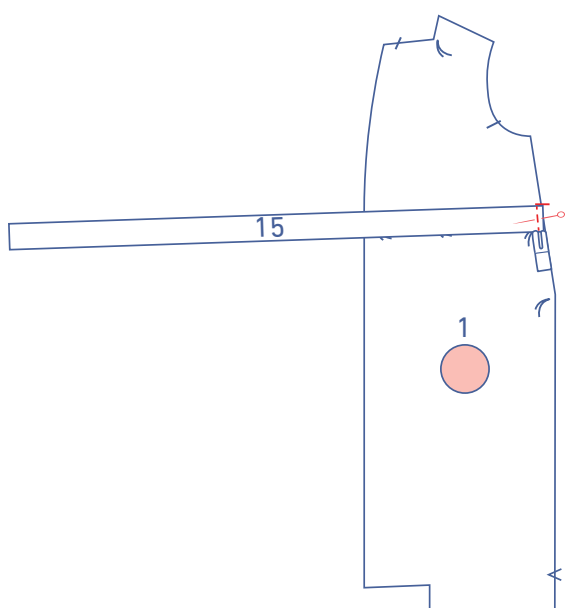
Fold the tie (15) in half with the long ends together and the right sides of the fabric facing.



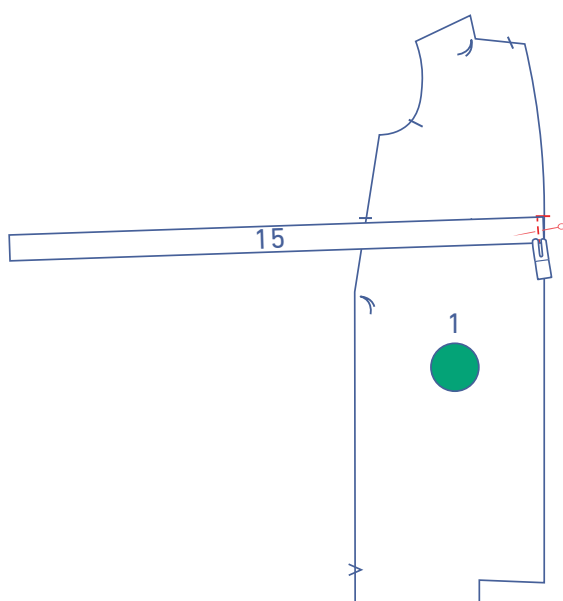
Sew the ends indicated at 1/6" from the raw edge.



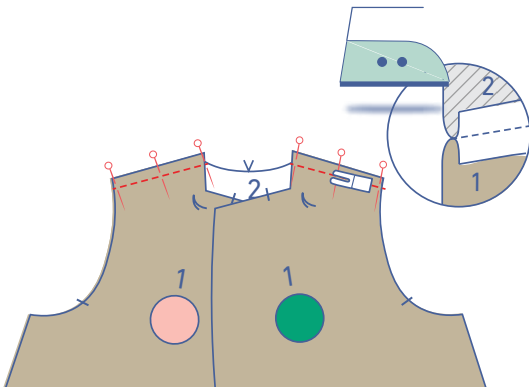
Turn the tie the right way out so that the wrong sides of the fabric are touching.



Pin one tie to the LF (1) where indicated and sew at presser foot width from the raw edge.

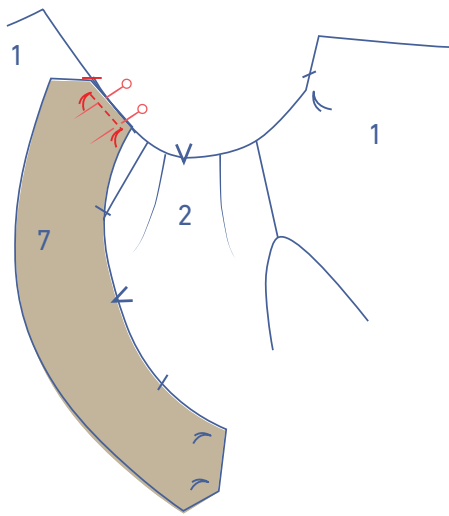


Pin the other tie to the RF (1) where indicated and sew at presser foot width from the raw edge.

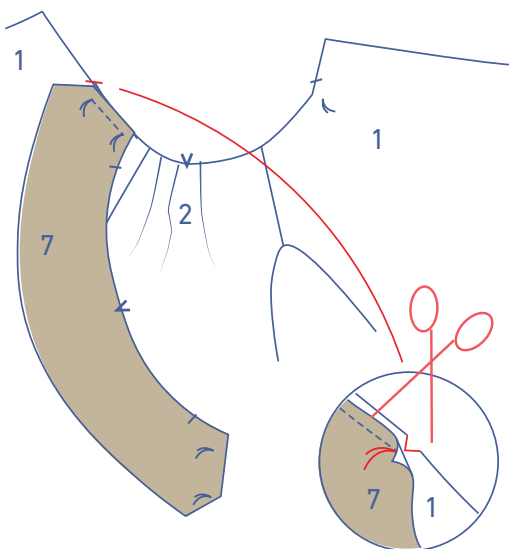


2

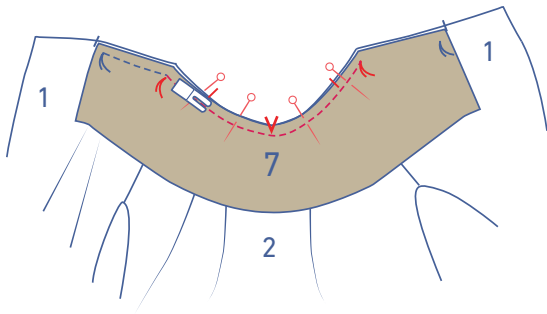
Pin the shoulder seams of the front and back (2) together and sew. Press the seam allowance open.



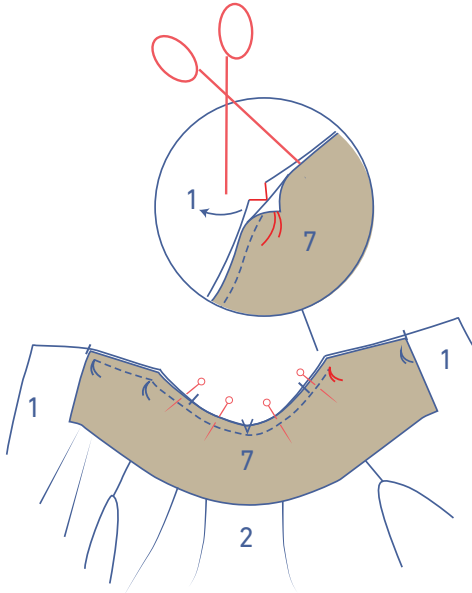
Place the under collar (7) on the front, right sides together. The short, slanted raw edge of the collar should match the diagonal notch. Start sewing from the marking thread right up to the next marking thread in the corner.



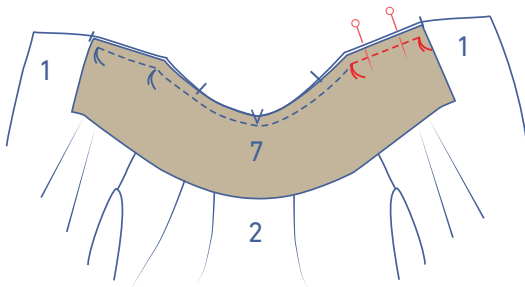
Leave the needle in the fabric. Raise the presser foot and fold the corner/tip of the collar out of the way. Snip into the seam allowance of the front until just before the needle.



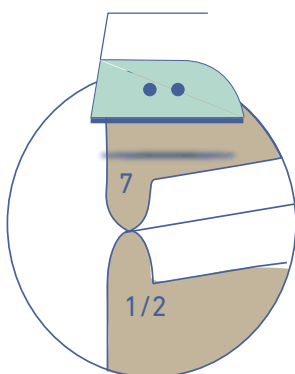
Turn the garment so that you can stitch the collar to the neckline of the garment and then lower the presser foot back down. Stitch into place up to the next marking thread in the corner, Make sure the notches in the collar match the shoulder seams. The V notch that marks the centre of the collar lines up with the V notch in the back neckline.



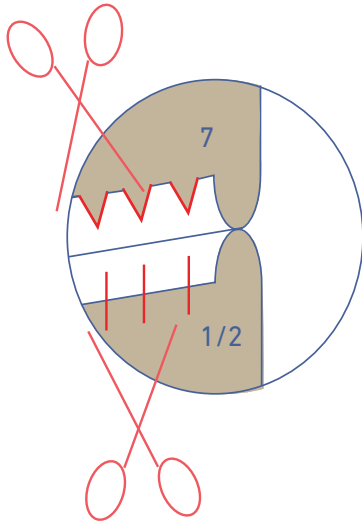
Leave the needle in the fabric. Raise the presser foot and fold the corner/tip of the collar out of the way. Snip into the seam allowance of the front until just before the needle.



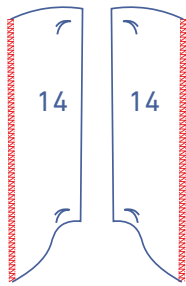
Turn the garment so that you can stitch the last section of the collar into place. Lower the presser foot back down and sew up to the marking thread.



Neatly press all of the seam allowances open.

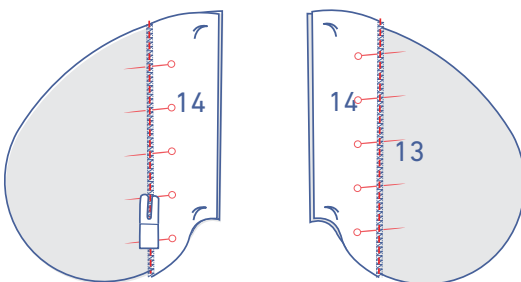


Notch both seam allowances so that the seams can lie flat.

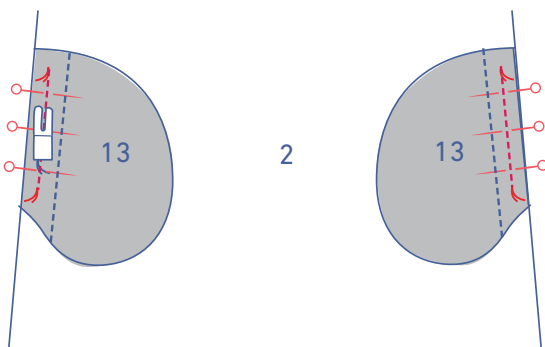


3

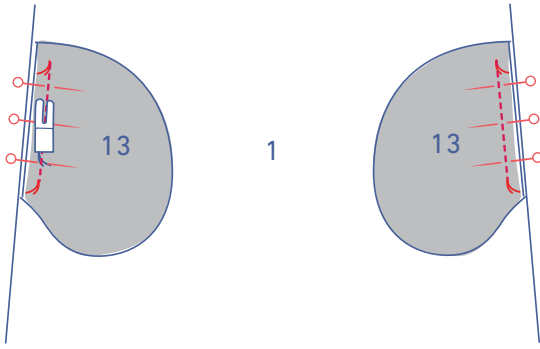
Finish the end of the pocket opening (14) with overlock stitching where indicated.



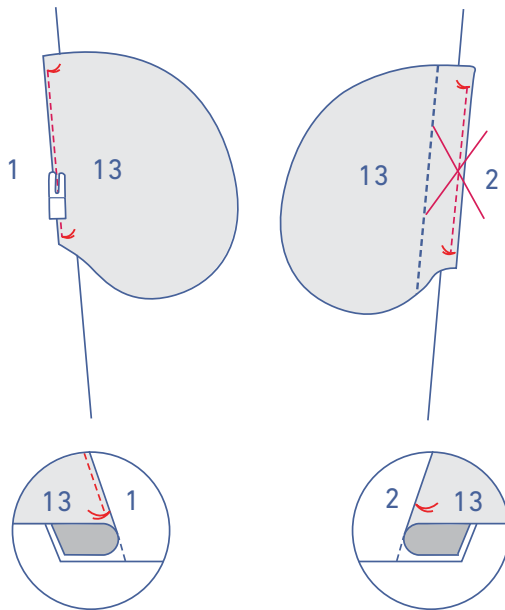
Pin the pocket openings on 2 of the 4 pocket pieces (13). Both pieces should face right side up. Sew into place at the overlock stitching.



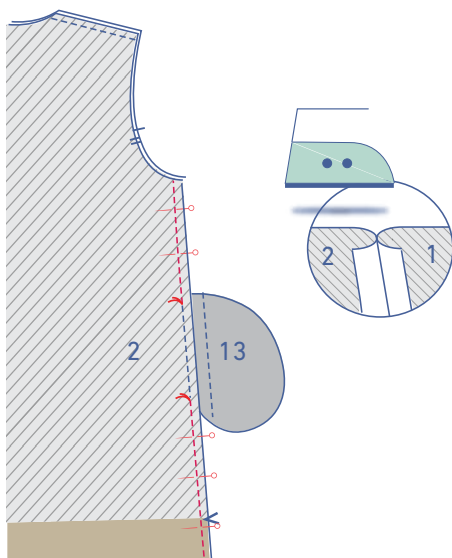
Fold over the pieces, pin and sew the straight ends of each pocket piece + pocket opening to the sides of the back, matching the marking threads. Stitch into place between the marking threads.



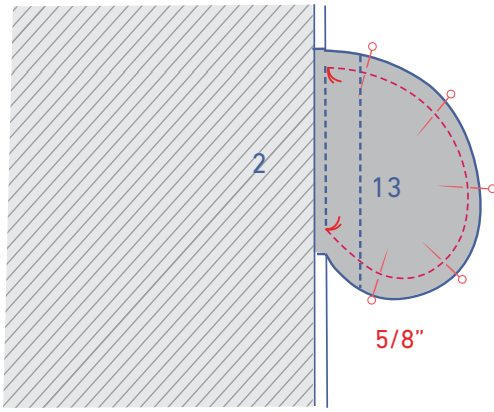
Pin and sew the straight ends of the remaining pocket pieces to each side of the front, matching the marking threads. Stitch into place between the marking threads.



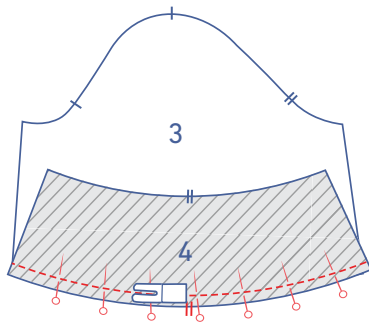
Fold over the pocket piece attached to the front and sew the pocket to the seam allowance underneath, right next to the edge. (Omit this step for the back.)



Pin and sew the side seams together. Sew into place right up to the marking thread that marks the top of the pocket opening. Now, stitch from the next marking thread down to the hem. Press the seam allowance open.

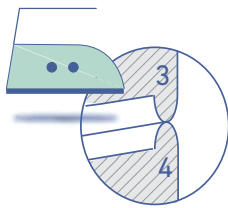


Pin and sew the contours of the pocket pieces together with a 5/8" seam allowance.

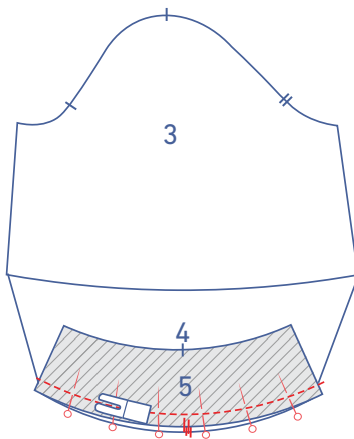


4

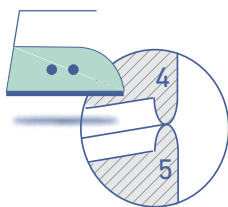
Pin and sew the top (3) and middle (4) sleeve pieces together with the notches matching.



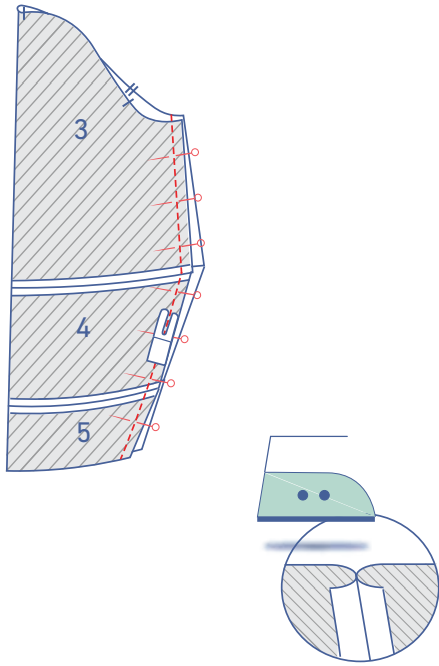
Press the seam allowance open.



Pin and sew the middle (4) and bottom (5) sleeve pieces together with the notches matching.

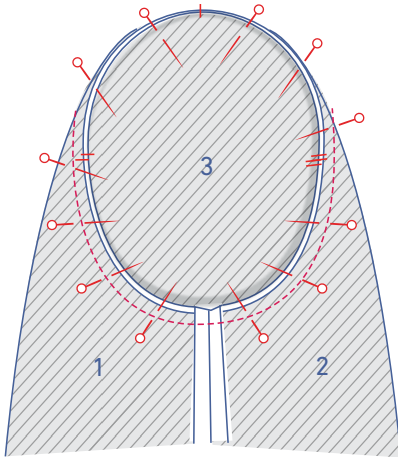


Press the seam allowance open.

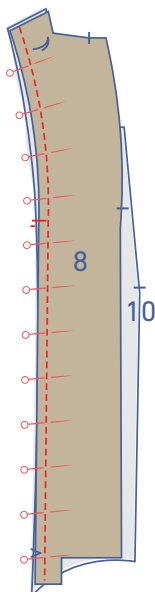


Pin and sew the underarm seam.

Press the seam allowance open.

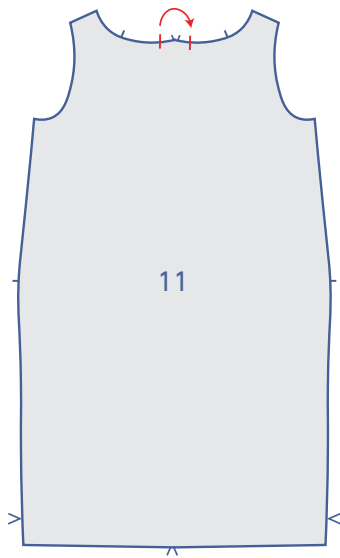


Pin and sew the top of the sleeve (= the sleeve cap) to the armhole, matching the markings. The single notch marks the front, while the double notch marks the back. The top notch should be even with the shoulder seam. Distribute the excess fabric between the markings.

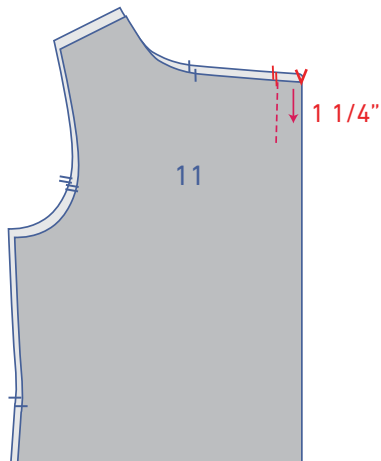


5

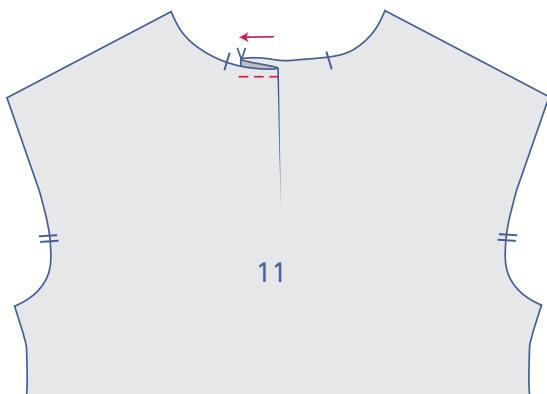
Pin and sew the facing front (8) to the lining front (10), making sure the notches are matching.



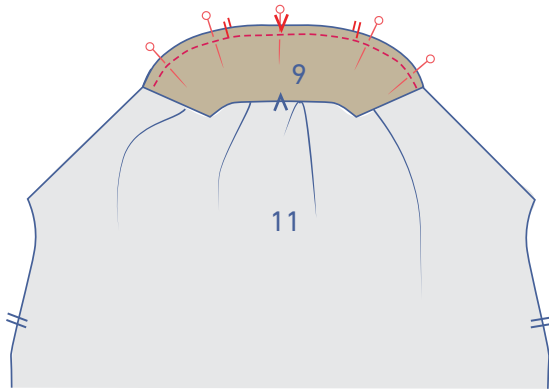
Make a pleat at the CB of the lining back (11) by matching the notches with the right sides of the fabric touching.



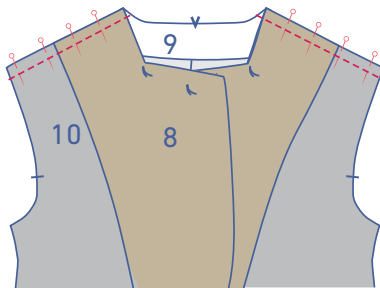
Sew a line vertically that is 1 1/4" parallel to the CB line.



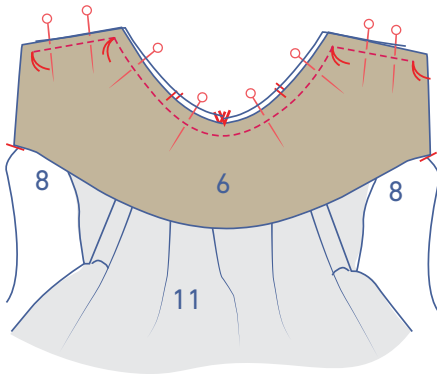
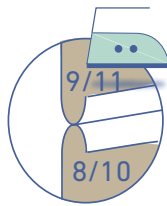
Fold the pleat allowance in the direction indicated and sew into place at presser foot width from the raw edge.



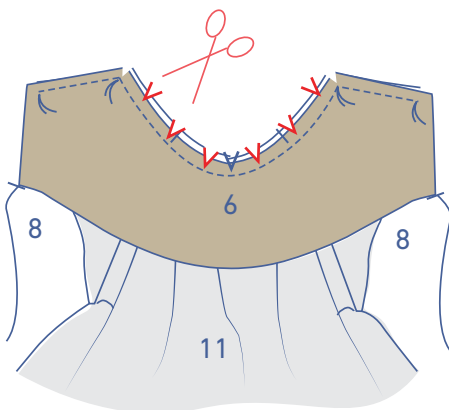
Pin the bottom of the facing back (9) to the top of the lining back, right sides together. Sew the facing to the lining, making sure the notches match.



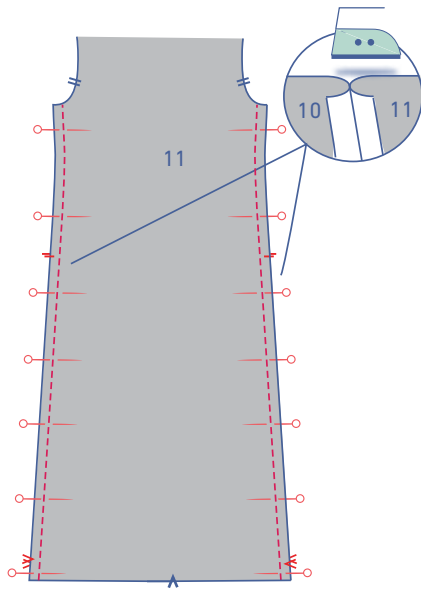
Pin and sew the shoulder seams together and press the seam allowance open.



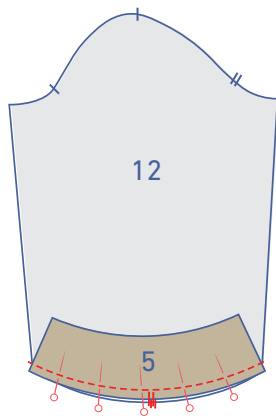
Now, follow the instructions from step 2 to sew the upper collar (6) to the coat lining.



Notch both seam allowances so that the seams can lie flat.

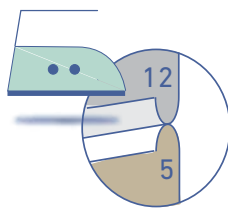


Pin and sew the side seams of the coat lining. Press the seam allowance open.

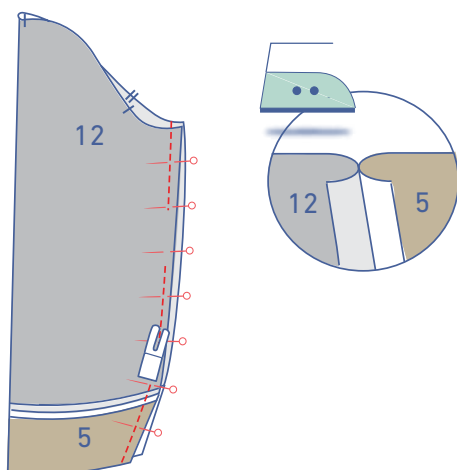


6

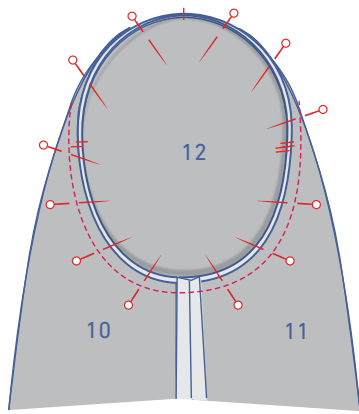
Pin the sleeve lining pieces (12) and both remaining interfaced sleeve bottom pieces together and sew, making sure the markings match.



Press the seam allowance open.



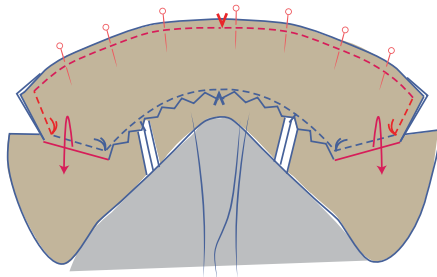
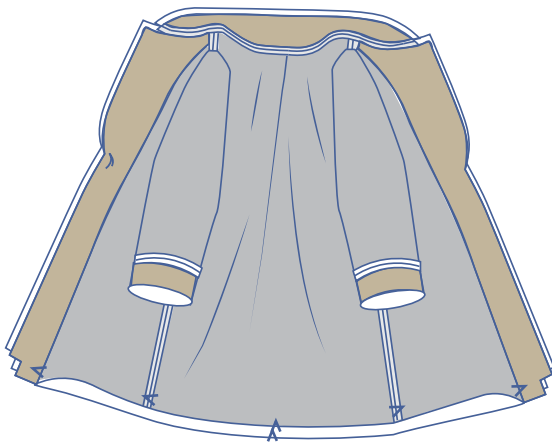
Pin and sew the underarm seams, but make sure to leave an opening in one of the sleeve linings to turn the coat the right way out later. Press the seam allowance open.



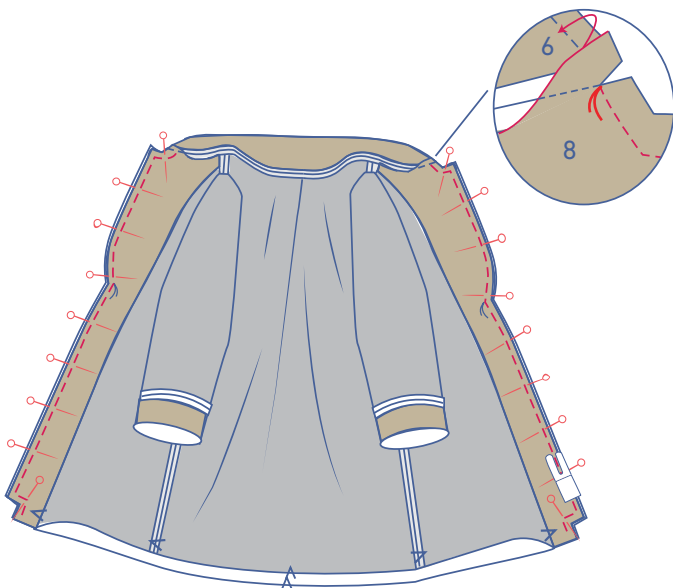
Follow the instructions in step 4 to sew the sleeve lining to the coat lining.

7

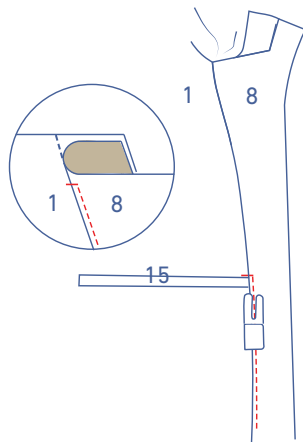
Join the coats (coat and coat lining) by placing them together with the right sides of the fabric facing.



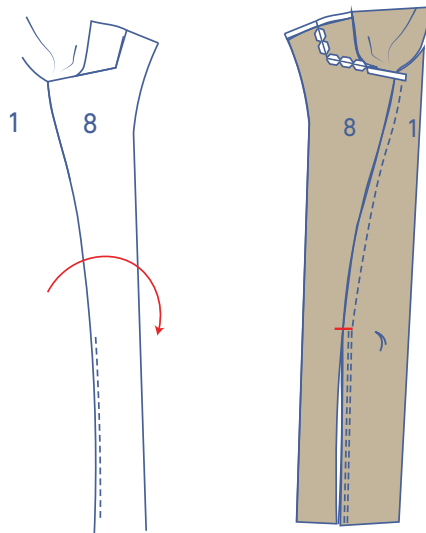
Pin the upper and under collars together and sew (the undercollar is smaller than the upper collar, so stretch the contours to match as you go). Sew from one marking thread to the other. Make sure you fold the seam allowances of the lapel over and out of the way as you do this.



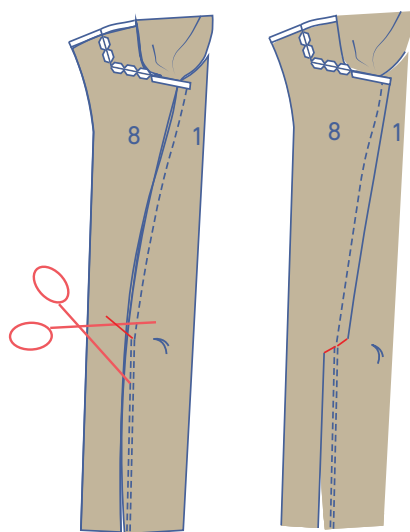
Now, pin the lapel and the CF lines together and sew. Start sewing from the marking thread at the intersection of the collar and lapel and stop 1 cm from the raw edges of the hem. Fold the seam allowance of the collar out of the way so that you can easily start sewing from the marking thread.



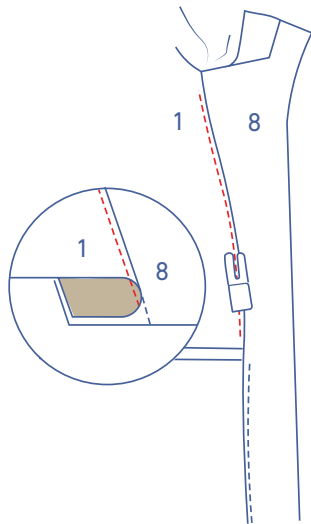
Fold the facing over (as much as possible) so that the right side is facing up. Stitch the facing to the seam allowance underneath right next to the seam – from the hem to the single notch. This will give you nice, clean lines. Otherwise, the seam will have the tendency to roll or curl over.



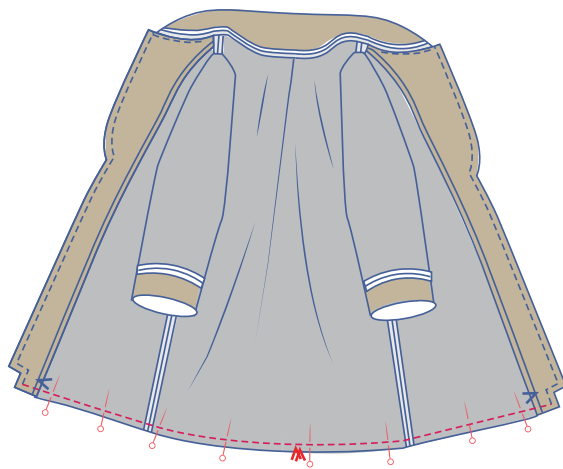
Turn the garment over so that the right side is facing down.



At the single notch, snip into the seam allowance until just before the stitching. That will allow you to flip the seam allowance above the notch over to point towards the front. Turn the garment back over so that the right side is facing up.

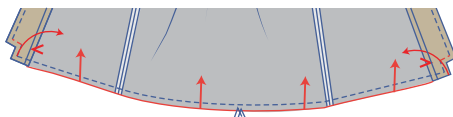


Sew the front to the seam allowance underneath above where you snipped into the fabric. Sew as far as you can.

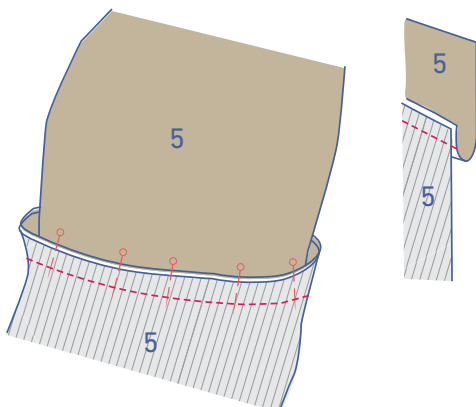
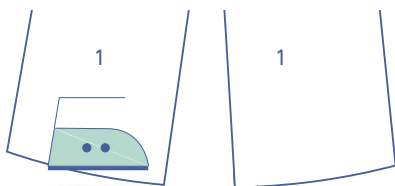


8

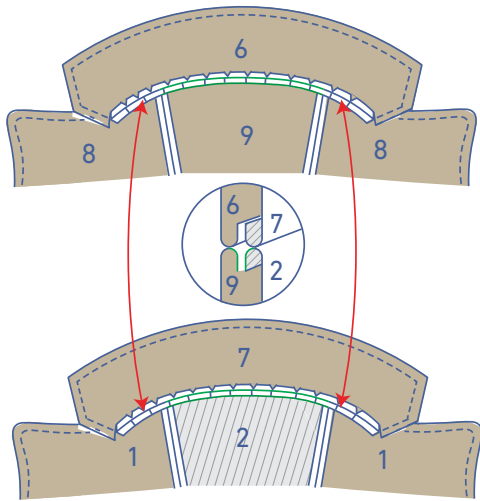
Turn the coat so that the right sides of the fabric are touching and sew the hemlines together.



Press the hem allowance of the front and back over at the V notches.

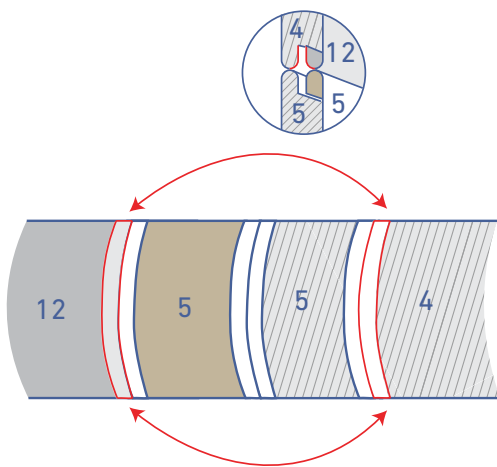


Slide the sleeve lining into the fabric sleeve so that everything lines up nicely. Pick up the sleeve hem and fold it onto the sleeve lining's hem so that the right sides of the fabric are facing. Pin and sew the hems together.



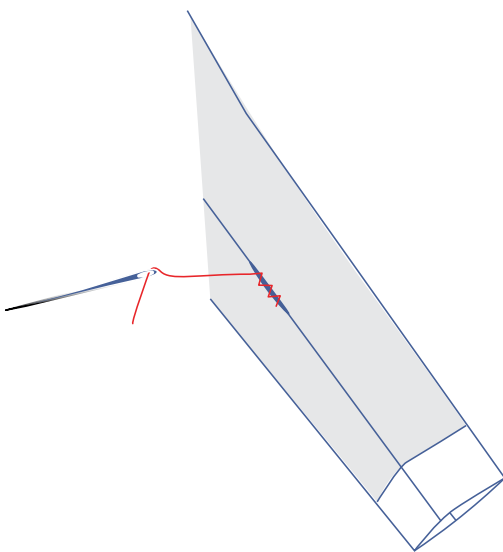
9

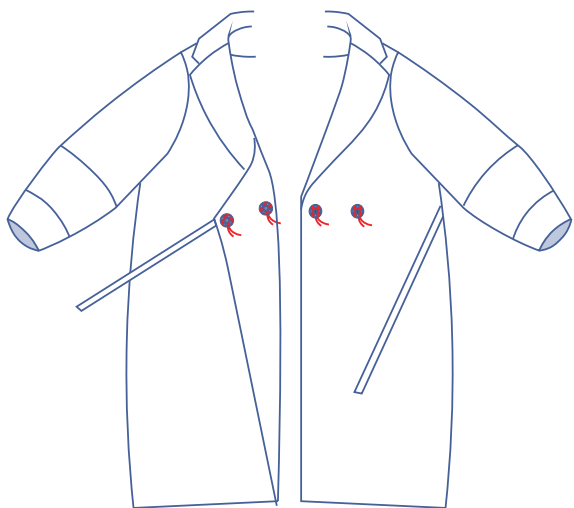
Next, turn the coat the right way out. Hand stitch or sew the seam allowances of the necklines of both coats together from one shoulder to the next (along the inside of the coat, through the opening in the sleeve lining).



Hand stitch or sew the seam allowances of the sleeve bottom pieces of both coats (coat and lining) together (along the inside of the coat through the opening in the sleeve lining).

Hand sew or stitch the opening in the sleeve lining closed.





10

Sew the snaps on where indicated.