

# Bobby by Fibre ⚡ood

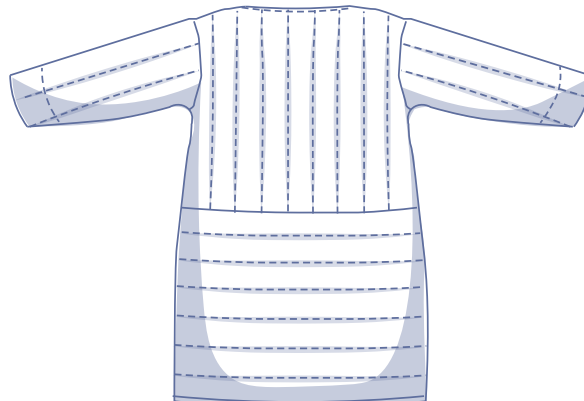
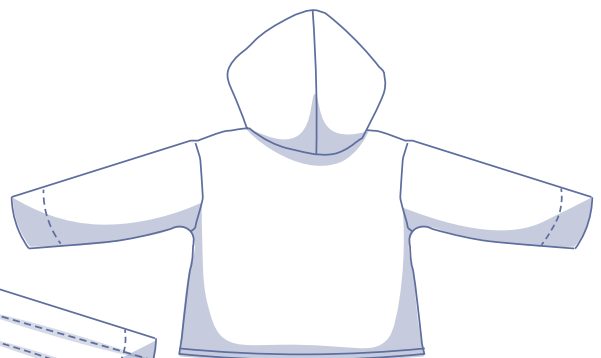
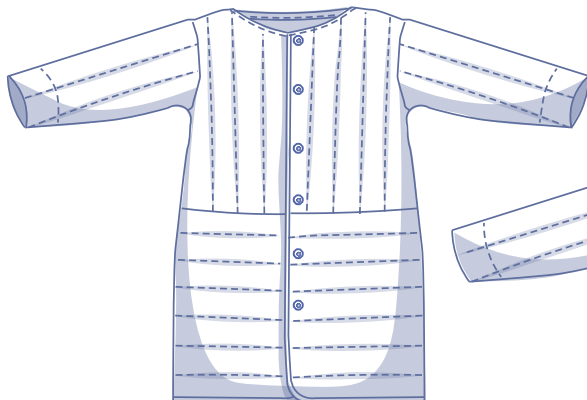
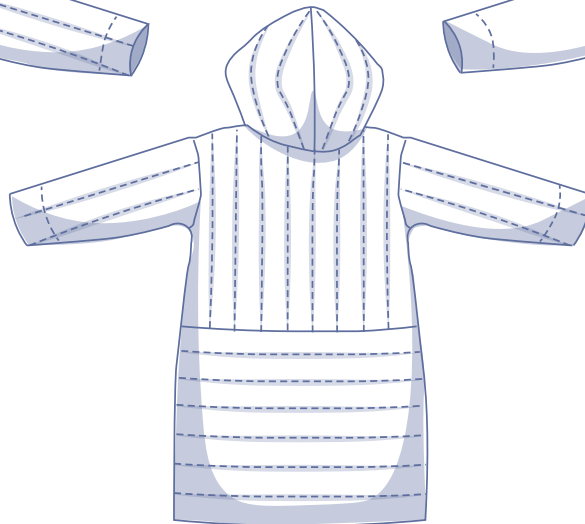
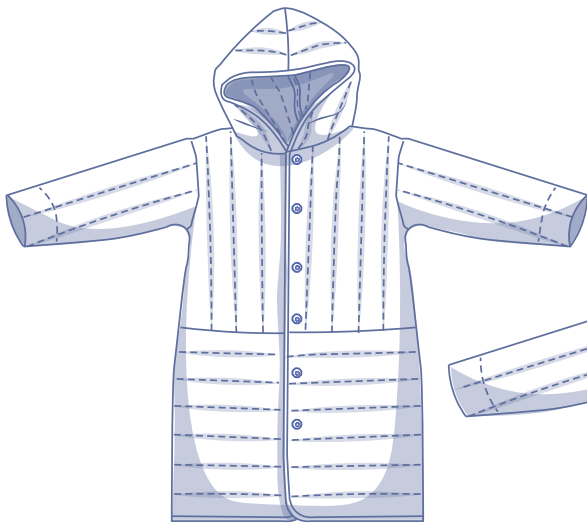


# Bobby by Fibre ⚡ood



**2 - 14 years**

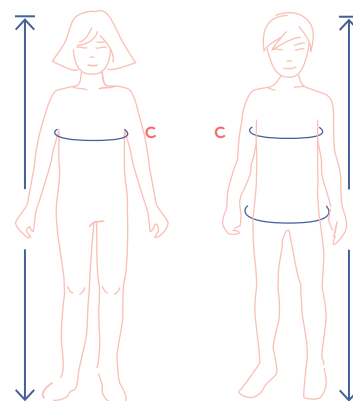
Hot, hotter, hottest... Bobby in padded fabric is a sure-fire way to keep the little ones safe and warm however cold the weather. Bobby is a versatile unisex children's coat that can be made long or short, with or without a hood.



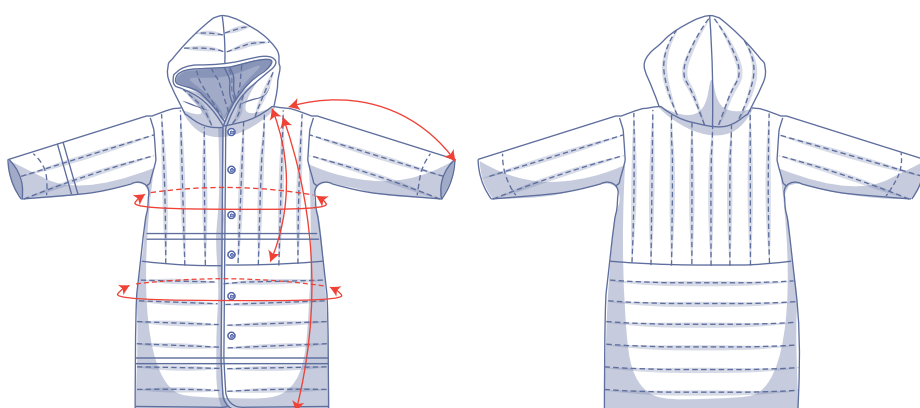
## size chart (in inches)

size	2	3	4	5	6	8	10	12	14
body height	3' 02"	3' 22"	3' 41"	3' 61"	3' 81"	4' 1"	4' 49"	4' 92"	5' 25"
C (chest)	20.5	21.3	22	22.8	23.6	25.2	26.8	28.3	29.9

Select your size based on **the chest measurement (regardless of age or height)**. Pick the size closest to the actual chest measurements. Next, adjust the length of the coat based on your child's age or height, listed in the chart below.



## pattern measurements (in inches)



This chart's measurements are the pattern measurements based on the fabric type and serve as a reference. Ease has been added to the width measurements (in addition to the exact body measurements) for a more comfortable fit. Bobby is designed to have a **loose cut**.

Would you prefer something a little more fitted? Just go a size smaller.

— shorten or lengthen the pattern here

size	2	3	4	5	6	8	10	12	14
length (short coat)	12.5	13.3	14.2	15	15.8	17.5	19.2	20.9	22.5
length (long coat)	21.2	23	24.8	26.6	28.5	32.1	35.7	39.4	43
sleeve length*	13.1	14.3	15.4	16.6	17.8	20.2	22.6	25	27.4
chest	30.8	31.6	32.4	33.2	34	35.5	37.1	38.7	40.3
hips	30.9	31.7	32.5	33.3	34.1	35.6	37.2	38.8	40.4

\* Including shoulder length.

Compare the stated lengths to the measured or desired lengths. **Lengthen** or **shorten** the coat and/or sleeves by cutting the pattern pieces at the indicated double lines. Then either increase the distance between the cut pieces by the desired amount (to lengthen) or overlap the pieces (to shorten). Make sure that the CF and CB lines and the side seams are always straight.



### IMPORTANT

Adjust the amount of fabric to be used based on these alterations.

## notions



- Thread
- Iron-on interfacing: max. 0.1 yd
- Thin fabric: max. 1/4 yd (only needed if you are using a thick fabric)
- Snaps (Ø 5/8"): see table
- Bias tape (width 0.8"): see table
- Fabric: see table

snaps	2	3	4	5	6	8	10	12	14
long coat	5	6	6	6	6	7	7	8	9
short coat	3	4	4	4	4	5	5	6	7

bias tape long coat without hood		2	3	4	5	6	8	10	12	14
neckline + CF + hem	yd	0.6	2.6	2.7	2.8	3	3.2	3.5	3.7	4

bias tape long version with hood		2	3	4	5	6	8	10	12	14
hood seam	yd	0.6	0.6	0.6	0.6	0.6	0.6	0.6	0.6	0.6
neckline	yd	0.5	0.5	0.6	0.6	0.6	0.6	0.6	0.6	0.6
CF + hem	yd	2.6	2.8	2.9	3.0	3.1	3.4	3.7	3.9	4.2
<b>total</b>		<b>3.7</b>	<b>3.9</b>	<b>4.1</b>	<b>4.2</b>	<b>4.3</b>	<b>4.6</b>	<b>4.9</b>	<b>5.1</b>	<b>5.4</b>

bias tape short coat without hood		2	3	4	5	6	8	10	12	14
neckline + CF + hem	yd	2	2.1	2.1	2.2	2.3	2.4	2.6	2.7	2.9

bias tape short coat with hood		2	3	4	5	6	8	10	12	14
hood seam	yd	0.6	0.6	0.6	0.6	0.6	0.6	0.6	0.6	0.6
neckline	yd	0.5	0.5	0.6	0.6	0.6	0.6	0.6	0.6	0.6
CF + hem	yd	2.2	2.3	2.3	2.4	2.5	2.6	2.8	2.9	3.1
<b>total</b>		<b>3.3</b>	<b>3.4</b>	<b>3.5</b>	<b>3.6</b>	<b>3.7</b>	<b>3.8</b>	<b>4</b>	<b>4.1</b>	<b>4.3</b>

fabric used (in yards) long version with hood		2	3	4	5	6	8	10	12	14
fabric width 43"	yd	1 ½	1 ½	1 ½	1 ¾	1 ¾	2	2 1/2	3	3 ¾
fabric width 55"	yd	1	1 ¼	1 ¼	1 ½	1 ½	1 ¾	2	2	2 ¼

The corresponding fabric layout can be found on page 6 of these sewing instructions.

fabric used (in yards) long version without hood		2	3	4	5	6	8	10	12	14
fabric width 43"	yd	1 ¼	1 ½	1 ½	1 ½	1 ¾	1 ¾	2	2 ½	3 ¼
fabric width 55"	yd	1	1 ¼	1 ¼	1 ½	1 ½	1 ¾	2	2 ¼	2 ¼

The corresponding fabric layout can be found on page 6 of these sewing instructions.

fabric used (in yards) short coat with hood		2	3	4	5	6	8	10	12	14
fabric width 43"	yd	1 ¼	1 ¼	1 ½	1 ½	1 ½	1 ½	1 ¾	2 ¼	2 ½
fabric width 55"	yd	1	1	1	1	1 ¼	1 ¼	1 ½	1 ½	1 ¾

The corresponding fabric layout can be found on page 6 of these sewing instructions.

fabric used (in yards) short coat without hood		2	3	4	5	6	8	10	12	14
fabric width 43"	yd	1	1	1	1	1 ¼	1 ¼	1 ½	1 ¾	2 ¼
fabric width 55"	yd	1	1	1	1	1 ¼	1 ¼	1 ½	1 ½	1 ½

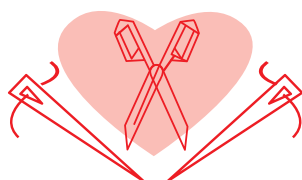
The corresponding fabric layout can be found on page 6 of these sewing instructions.

### fabric advice



Make Bobby in a warm fabric. What did we have in mind? Padded, quilted, or matelassé fabrics. However, faux fur, teddy fabric, or other woollen fabrics (e.g. a cashmere blend) will all look and feel fantastic. If you plan to make Bobby in a reversible fabric, e.g. reversible shearling, you can omit finishing the seams and be done with the coat that much faster!

# Proud to be #Sewista



## pattern pieces & seam allowances (in inches)

To sew the garment as described in the instructions, draw the illustrated seam allowances around the paper pattern pieces before cutting them out. If you are using a PDF pattern, the pattern can be printed with or without seam allowance. To find out more, watch the [video](#).

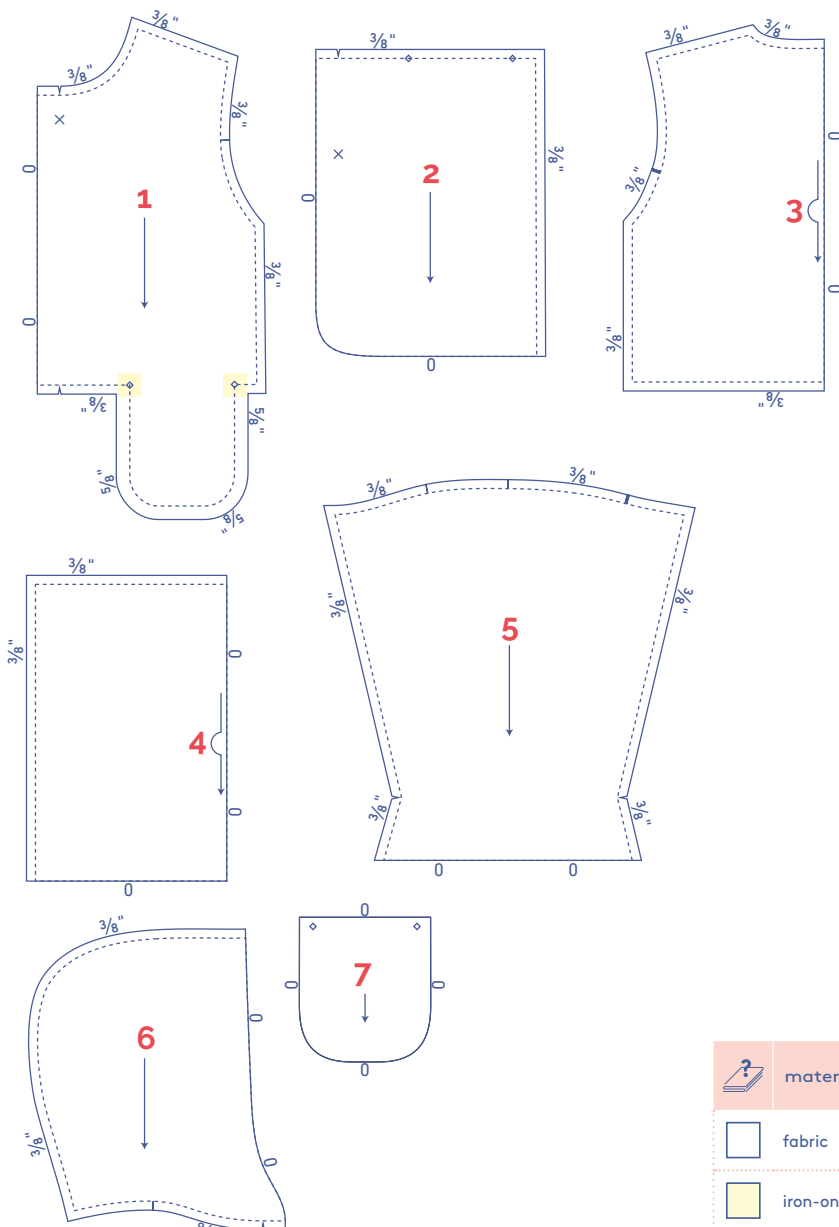
1. front: 2x
2. bottom piece F: 2x
3. back: 1x on the fabric fold
4. bottom piece B: 1x on the fabric fold
5. sleeve: 2x
6. hood: 2x
7. pocket: 2x (optional: thinner fabric)

### NOTE

Bobby comes in two versions, short and long.

The long coat calls for all pattern pieces, i.e. 1 through 7 (with or without the hood, pattern piece 6).

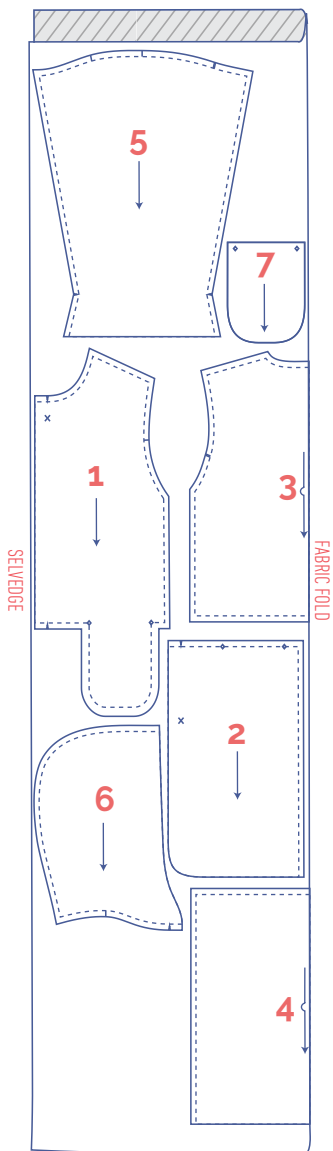
For the short coat, you need pattern pieces 1, 3, and 5 (with or without the hood, pattern piece 6). The short coat has no pocket. So cut off the pocket from pattern piece 1 so you have a straight edge along the hem.



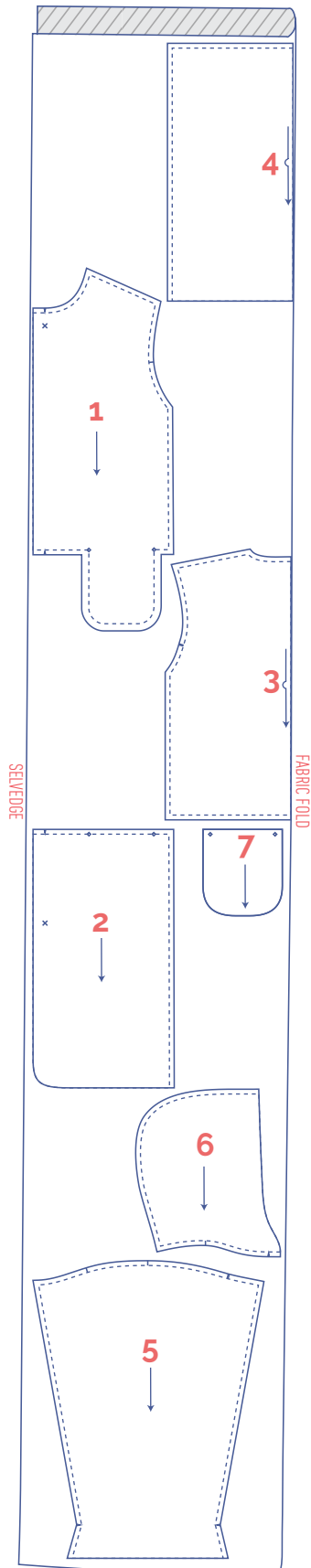
**fabric layout – solid fabrics**  
**fabric width 43"**

**long coat**

**2 - 8 years**



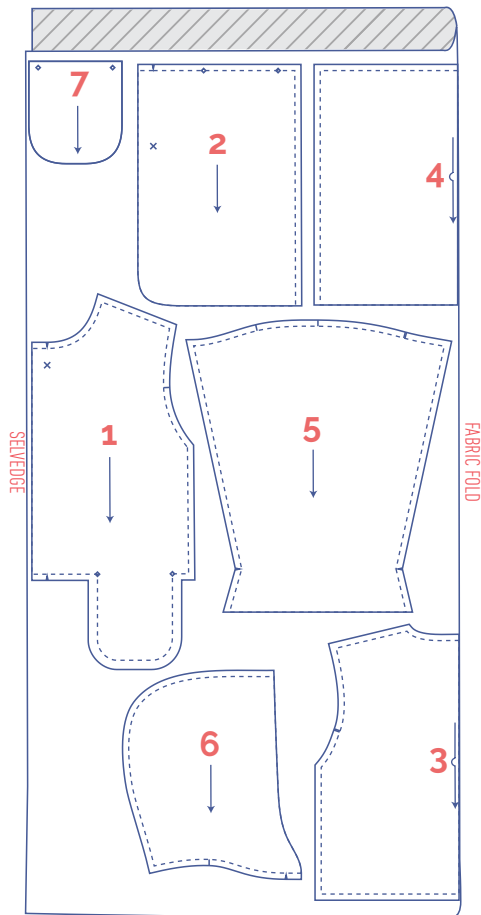
**10 - 14 years**



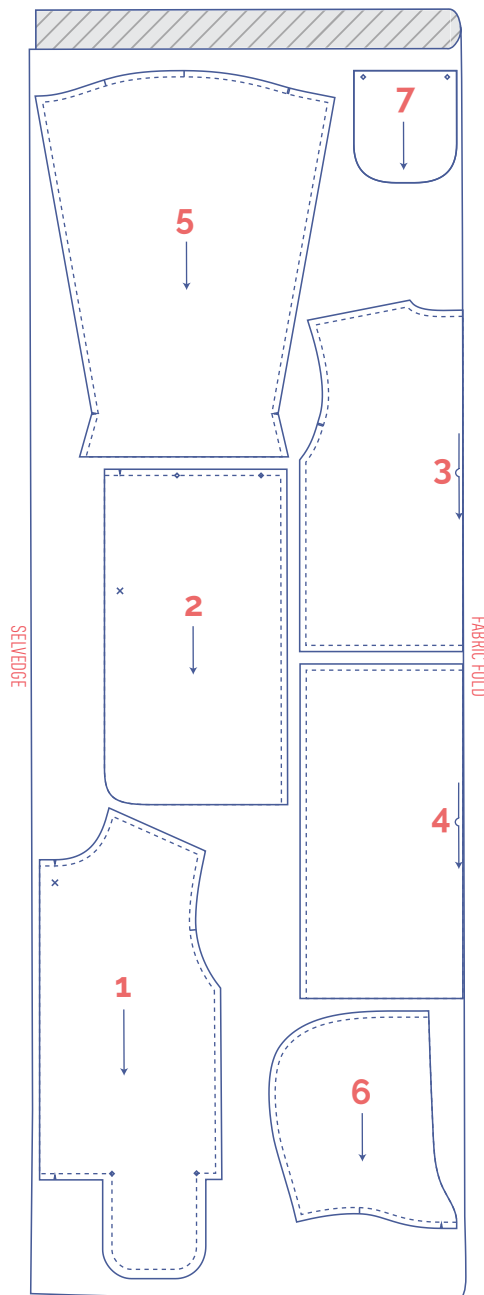
**fabric layout – solid fabrics**  
**fabric width 55"**

**long coat**

**2 - 8 years**



**10 - 14 years**

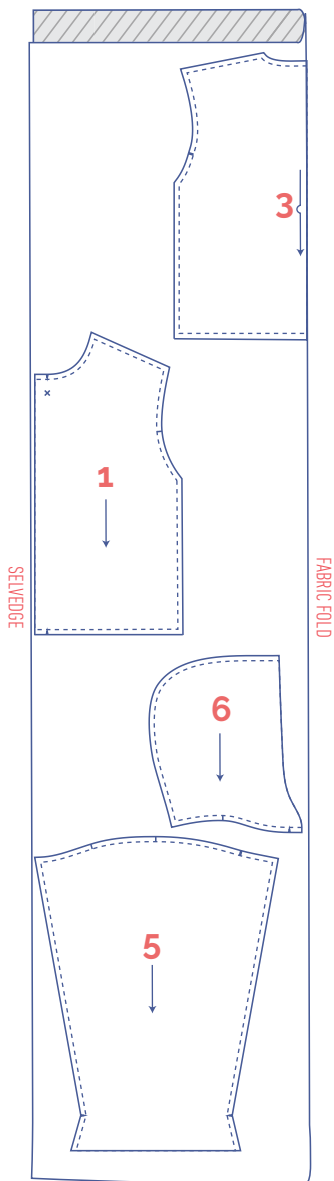




## fabric layout – solid fabrics fabric width 43"

short coat

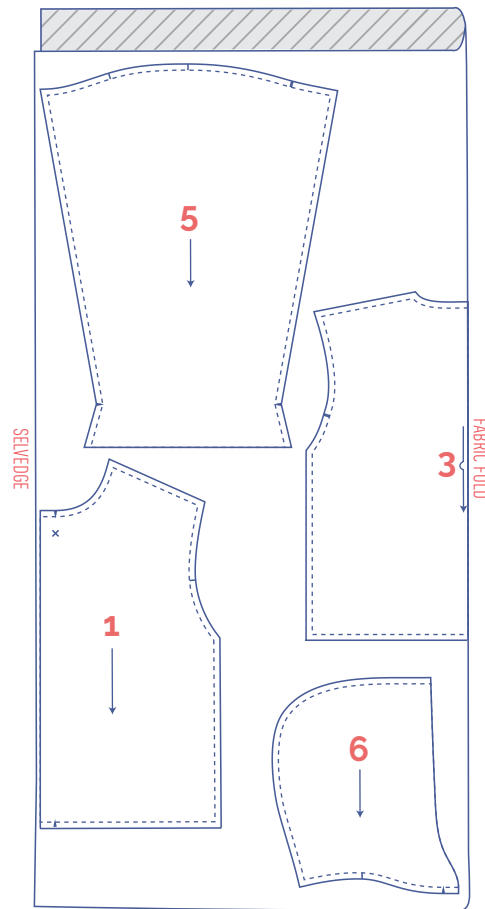
2 - 14 years










## fabric layout – solid fabrics fabric width 55"

short coat

2 - 14 years



## marking pattern pieces

 <p>Notch the pattern paper and fabric at the following points</p>	 <p>Mark the following points using marking thread</p>
 <p>single notch</p>	 <p>centre point</p>
 <p>double notch</p>	 <p>snap/button</p>
 <p>V notch</p>	

# sewing instructions



The method used to finish the seams depends on the fabric used.  
The pieces are always sewn together with the right sides of the fabric facing, unless stated otherwise.

F front

B back

CF centre front

CB centre back



right side



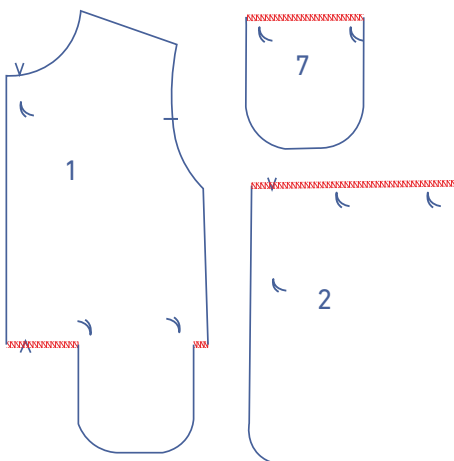
wrong side



iron-on interfacing



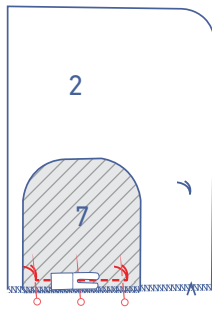
bias tape



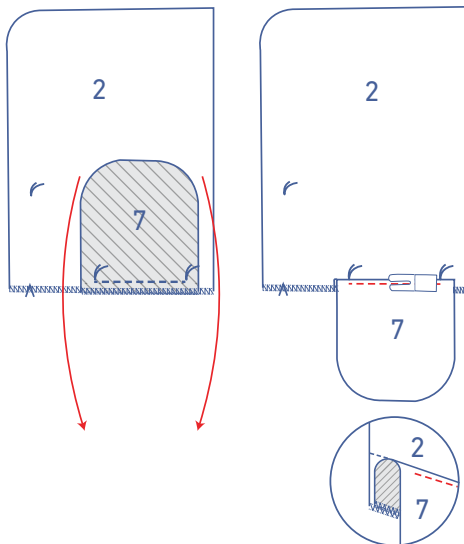
## 1

Finish the straight ends of the pocket pieces (7), the bottom of the front (1), and the top of the bottom piece front (2) with overlock stitching.

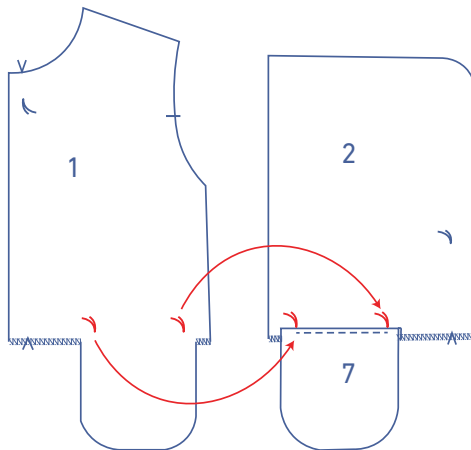
**NOTE:** For the short coat you can skip directly to step 3!



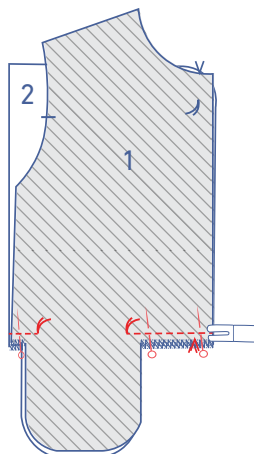
Pin the straight ends of the pocket pieces to the bottom piece front with the marking threads matching. Stitch into place between the marking threads.

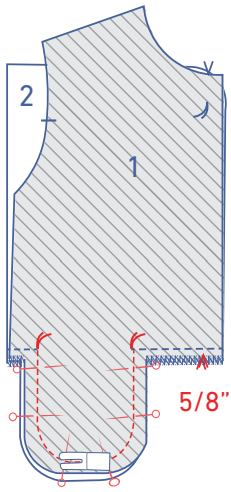


Fold the pocket and seam allowance down and sew the pocket to the seam allowance underneath between the marking threads.

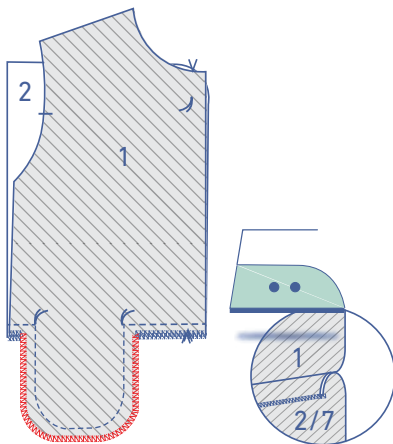


Pin the front and bottom piece front together, matching the marking threads. Sew between the marking thread and CF, and marking thread and side seam as shown.

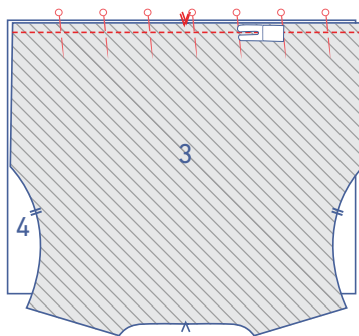




Pin the contours of the pocket pieces together. Sew into place at 5/8" from the raw edge from one marking thread to the other.

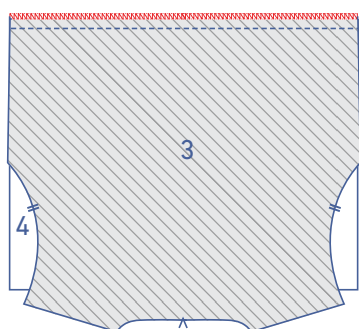
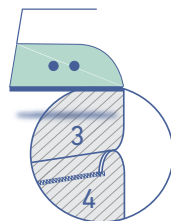


Finish the raw edges with overlocking and press the seam allowance towards the bottom piece.

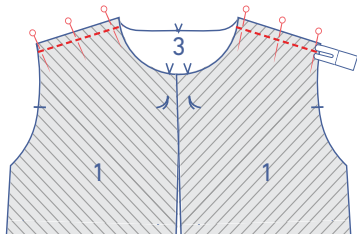


## 2

Pin the back (3) and bottom piece back (4) together and sew.

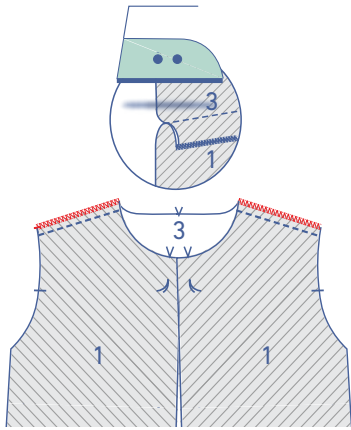


Finish the raw edges with overlocking and press the seam allowance towards the bottom piece.



### 3

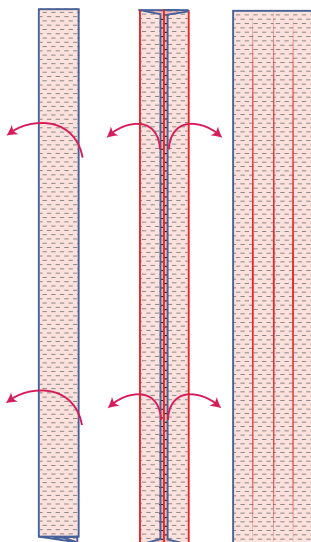
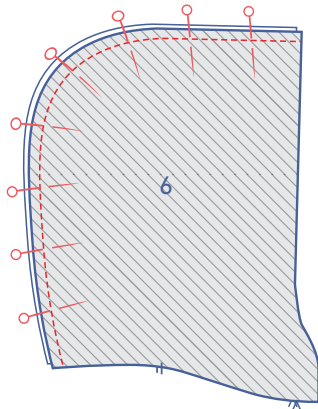
Pin the shoulder seams together and sew.



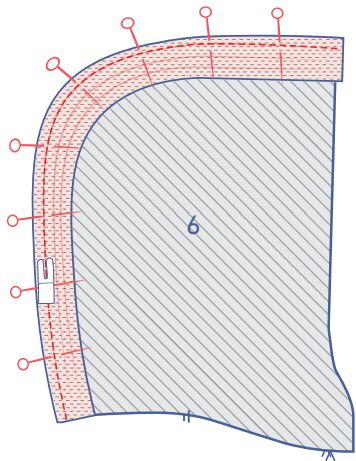
Finish the raw edges with overlock stitching. Press the seam allowance towards the front.

### 4

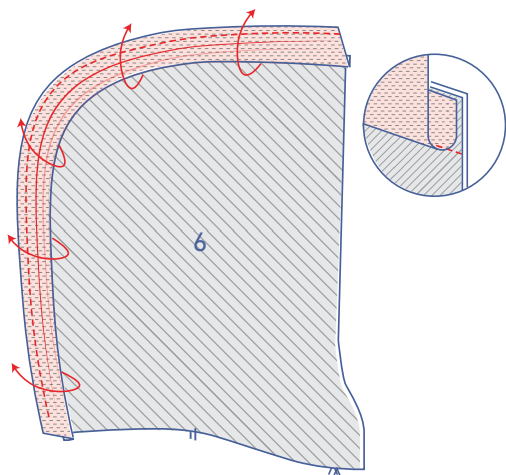
Pin and sew the curved seam of the hood (6) together.



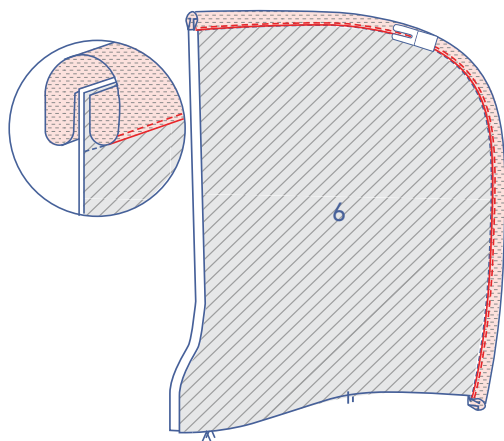
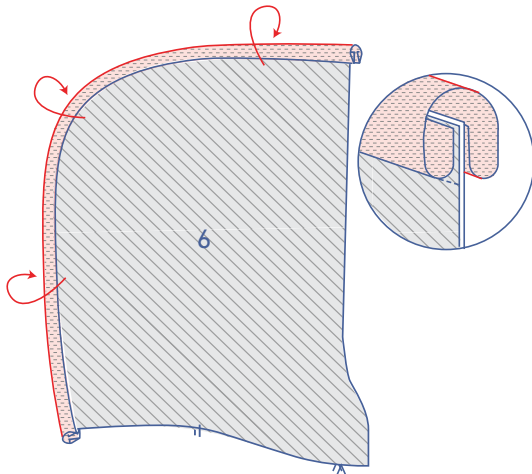
Finish the raw edges with bias tape. First open the bias tape out.



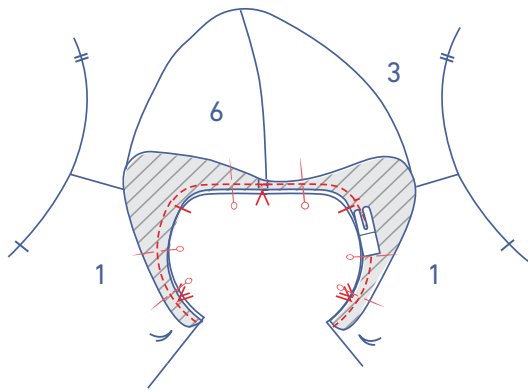
Pin the bias tape to the seam allowance of the CB seam. Stitch into place along the first fold line.



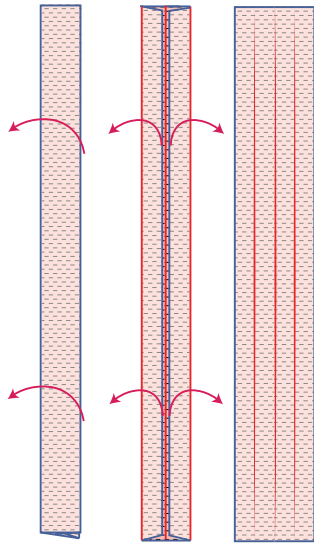
Fold the bias tape over towards the other side of the seam allowance along the centre fold line. Tuck under the raw edge.



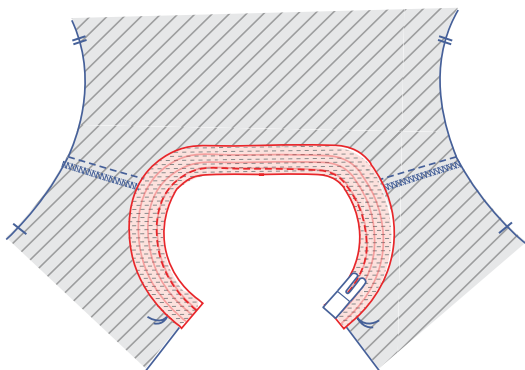
Place the folded edge directly over the previous stitching and sew into place right next to the edge.



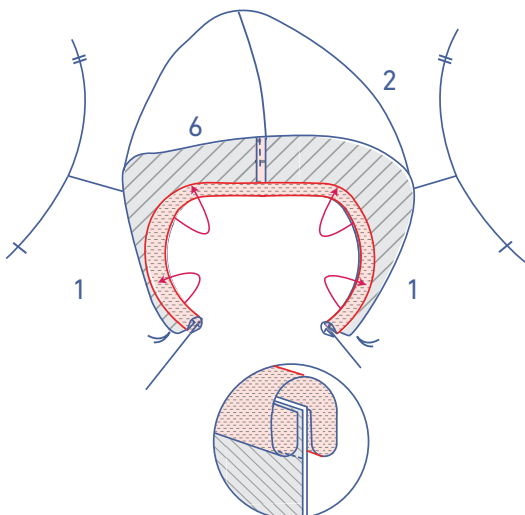
Pin the hood to the neckline and sew, making sure the notches match.



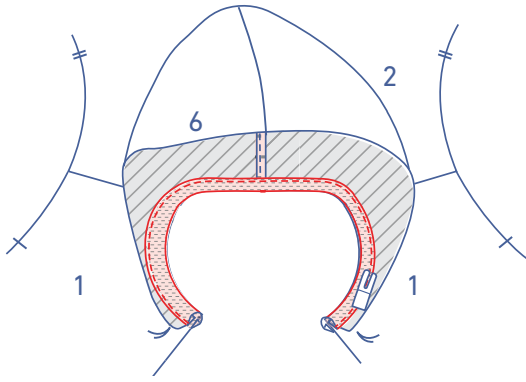
Open out the bias tape for the neckline.



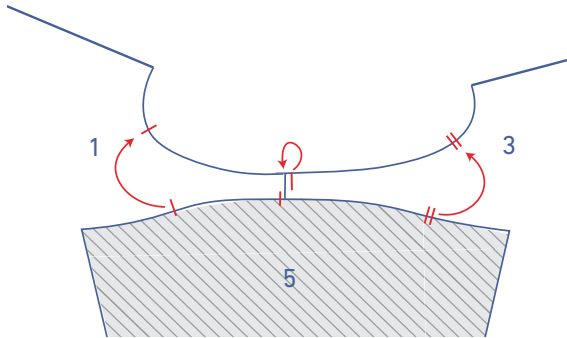
Pin the bias tape to the bottom of the neckline's seam allowance: sew into place in the first fold line.



Fold the bias tape over the top of the seam allowance. Then tuck the raw edge under and place the folded edge directly over the previous stitching.

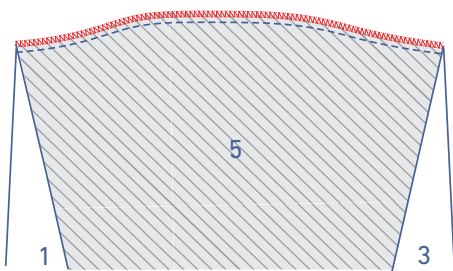
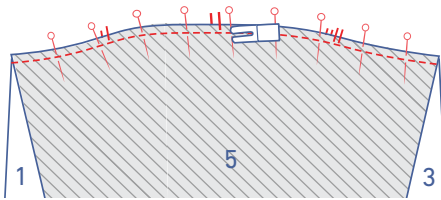


Edgestitch all the way around.

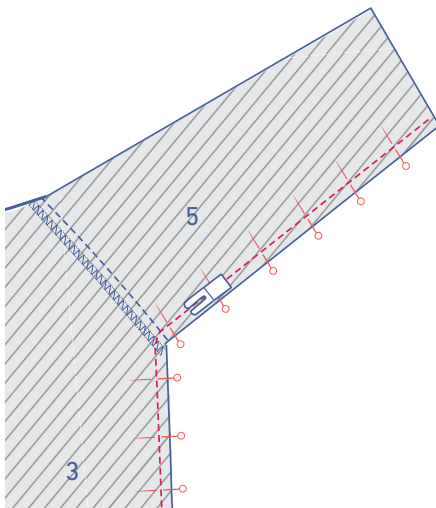


## 5

Pin and sew the top of the sleeve (5) (= the sleeve cap) to the armhole, matching the notches. The single notch marks the front, while the double notch marks the back. The top notch should line up with the shoulder seam.

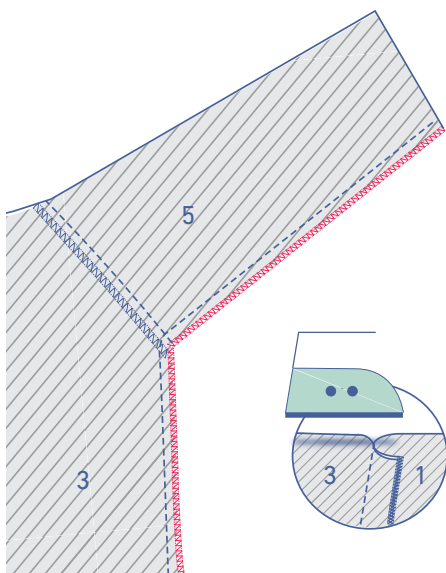


Finish the raw edges with overlock stitching.



Pin and sew the side and underarm seams.

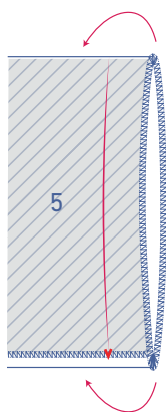




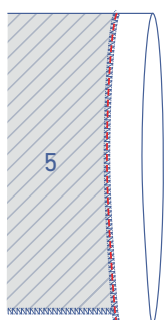
Finish the raw edges with overlock stitching. Press the seam allowance towards the front.



Finish the sleeve hem with overlock stitching.

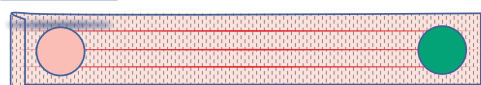
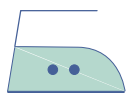
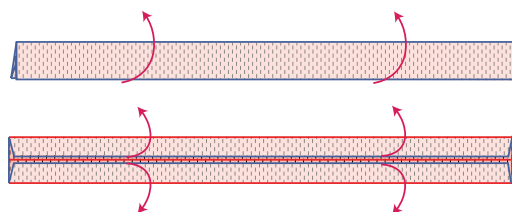


Press the hem allowance over at the V notches.

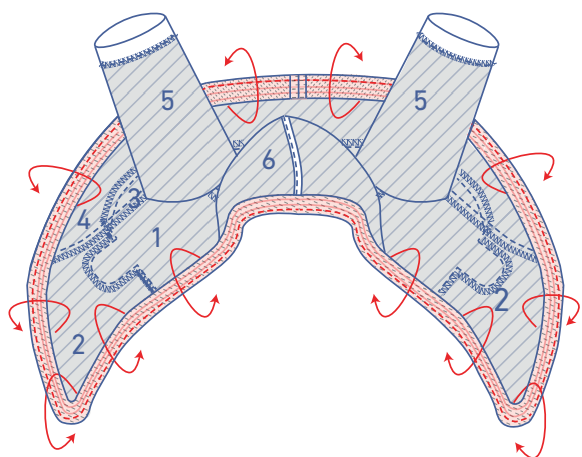
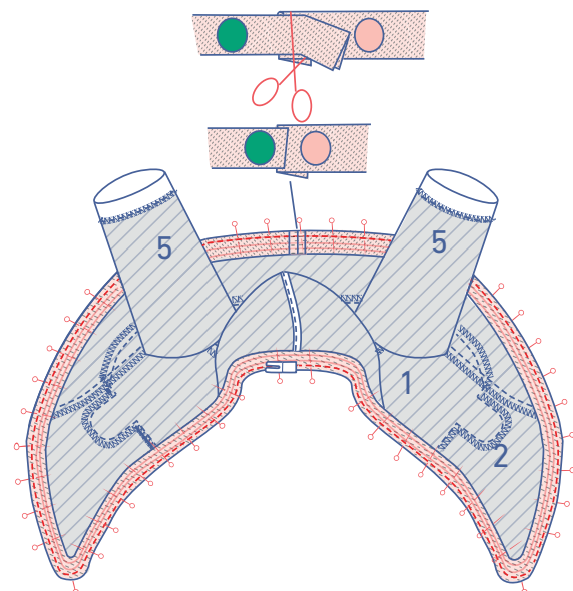


Sew into place.

**SEWISTA TIP:** *If you are using a very thick fabric, you can skip the seam allowance at the sleeve hem and use bias tape for the finishing.*



3/8"



## 6

*Following steps are for the short and long version.*

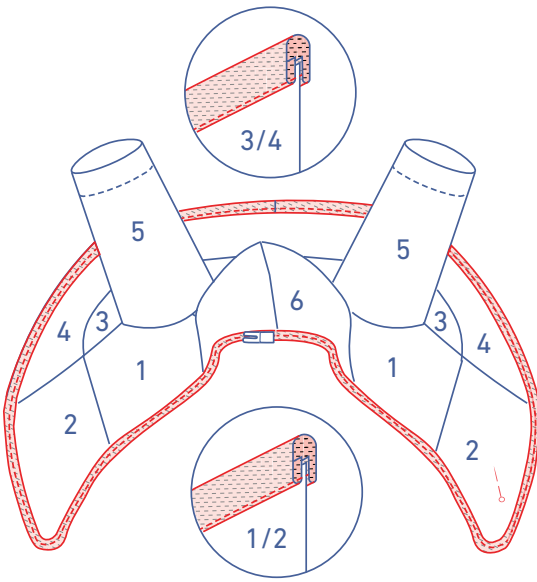
Open out the bias tape for the CF hems.

Press one short end 3/8" towards the wrong side. We've marked this pressed short end with a pink circle. The unpressed short end has been marked with a green circle.

Pin the raw edge of the bias tape to the inside of the coat. The folded end (pink circle) should match the V notch in the CB hem. The unfolded end (green circle) of the bias tape should be on top of the folded end. Trim any excess bias tape. Sew into place in the first fold line.

Fold the bias tape over towards the right side of the coat at the centre lines. Tuck under the raw edge and place the folded edge directly over the previous stitching.

Edgestitch the bias tape into place.



## 7

Attach the snaps where indicated. The top and bottom snap fastener locations have been marked on the pattern for you. Divide the distance between them evenly to determine the location of the other snaps.

