

Betty by Fibre ⚡ood



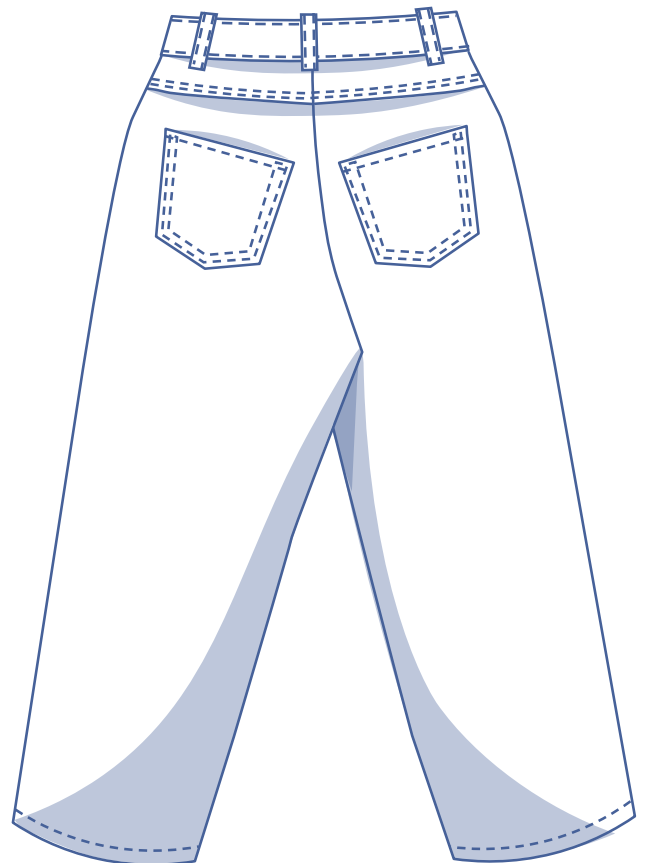
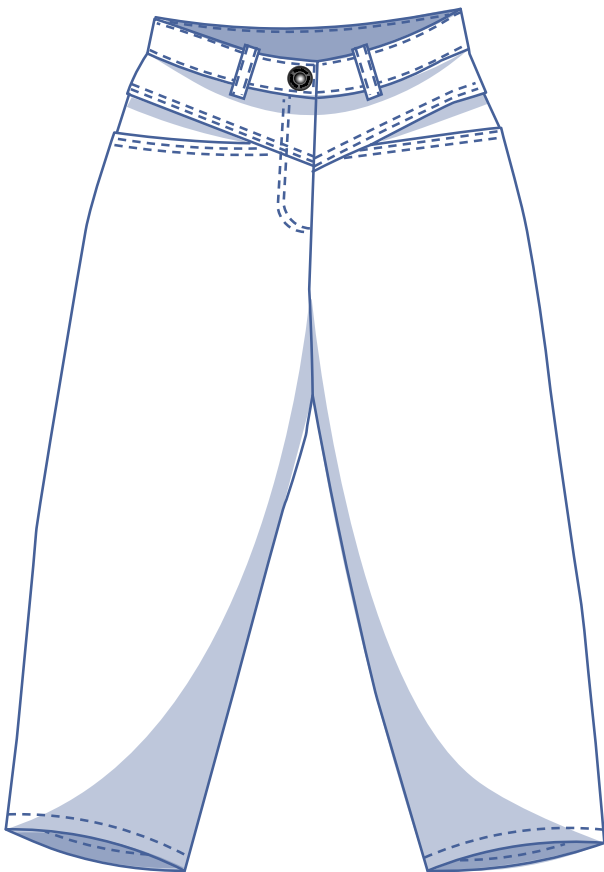
Betty Fibre ⚡ood

***✱✱



0 - 28

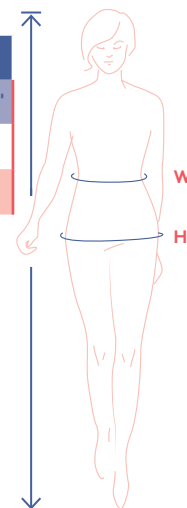
Betty is a timeless pair of high-waisted ankle length balloon trousers. It is so easy to combine with other items in your wardrobe, and you can enjoy strolling about with your hands comfortably nestled in the pockets at the front. Betty is embellished with choice 80s design details like slanted lines and triangles. And of course there are belt loops on the (straight) waistband.



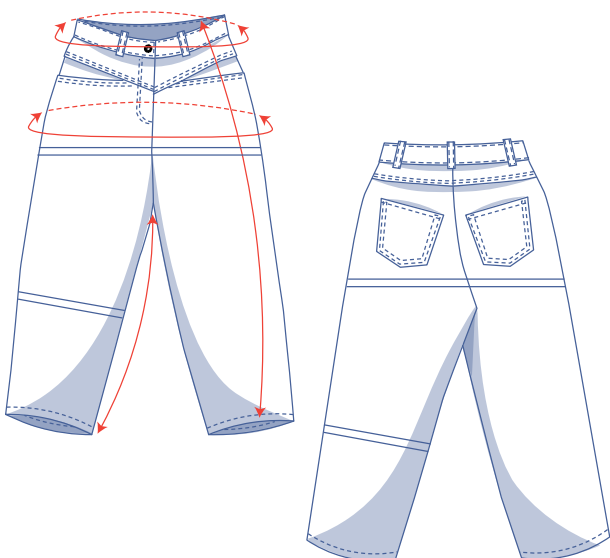
size chart (in inches)

size	0	2	4	6	8	10	12	14	16	18	20	22	24	26	28
H (height)	5'25"	5'38"	5'45"	5'48"	5'51"	5'54"	5'58"	5'61"	5'64"	5'64"	5'64"	5'64"	5'64"	5'64"	5'64"
W (waist)	26	26.8	27.6	29.1	30.7	32.3	33.1	34.6	37.2	39.8	42.3	44.9	47.4	50	52.6
H (hips)	33.9	35.4	37	38.2	39.4	40.6	41.7	42.9	45.3	47.2	49.2	51.2	53.1	55.1	57.1

To choose your size, start with your **waistline measurement**. Pick the size that's the best match for your waistline. Next, see which size is closest to your hip measurement. If you need a different size at the hip, when tracing the pattern, simply trace from the line of one size to the other.



pattern measurements (in inches)



This chart's measurements are the pattern measurements based on the fabric type and serve as a reference. Ease has been added to the width measurements (on top of the exact body measurements) for a more comfortable fit. Betty is designed to be **fitted at the waist and loose around the hips**.

== shorten or lengthen the pattern here

size	0	2	4	6	8	10	12	14	16	18	20	22	24	26	28
side length*	36.7	36.9	37.1	37.3	37.5	37.6	37.8	38.0	38.2	38.4	38.6	38.8	39.0	39.2	39.4
inseam length	24.9	24.9	24.9	25.0	25.0	25.0	25.0	25.0	25.0	25.1	25.1	25.2	25.2	25.3	25.3
waist	26.0	26.8	27.6	29.2	30.8	32.3	33.1	34.7	37.3	39.8	42.4	44.9	47.5	50.0	52.6
hips	36.5	38.0	39.6	40.8	42.1	43.3	44.4	45.5	47.9	49.9	51.9	53.9	55.9	57.8	59.8

* Including the waistband.

Compare the stated lengths to the measured or desired lengths. **Shorten** or **lengthen** the trouser legs and/or rise by cutting the pattern pieces at the indicated double lines. Then either increase the distance between the cut pieces by the desired amount (to lengthen) or overlap the pieces (to shorten). Make sure that the CF and CB lines and the side seams are always straight.



IMPORTANT

Adjust the amount of fabric to be used based on these alterations.

notions



- Thread
- Iron-on interfacing: max. ¼ yd
- (Jeans) Button (Ø ¾"): 1
- Closed-end zip: see table
- Light-weight fabric or lining: max. ¼ yd
- Fabric: see table

zip		0	2	4	6	8	10	12	14	16	18	20	22	24	26	28
length	"	6	6	6	6	6	6	6	7	7	7	7	7	7	7	7

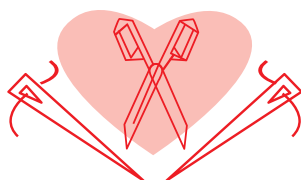
fabric		0	2	4	6	8	10	12	14	16	18	20	22	24	26	28
fabric width 43"	yd	2	2	2	2	2 ¼	2 ½	2 ½	2 ½	2 ½	2 ½	2 ½	2 ¾	3	3 ¼	3 ¼
fabric width 55"	yd	1 ½	1 ¾	1 ¾	1 ¾	2	2 ¼	2 ¼	2 ¼	2 ¼	2 ¼	2 ½	2 ½	2 ½	2 ½	2 ½

The corresponding fabric layout can be found on page 6 of these sewing instructions.

fabric advice Betty looks fabulous in corduroy or velvet, denim, cotton twill, or woven jacquard – with or without a bit of stretch. Stay away from light, overly drapery fabrics and go for something more structured instead. Leather(ette) would be perfect for a dose of schwung.



Proud to be #Sewista



pattern pieces & seam allowances (in inches)



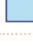

To sew the garment as described in the instructions, draw the illustrated seam allowances around the paper pattern pieces before cutting them out. If you are using a PDF pattern, the pattern can be printed with or without seam allowance.

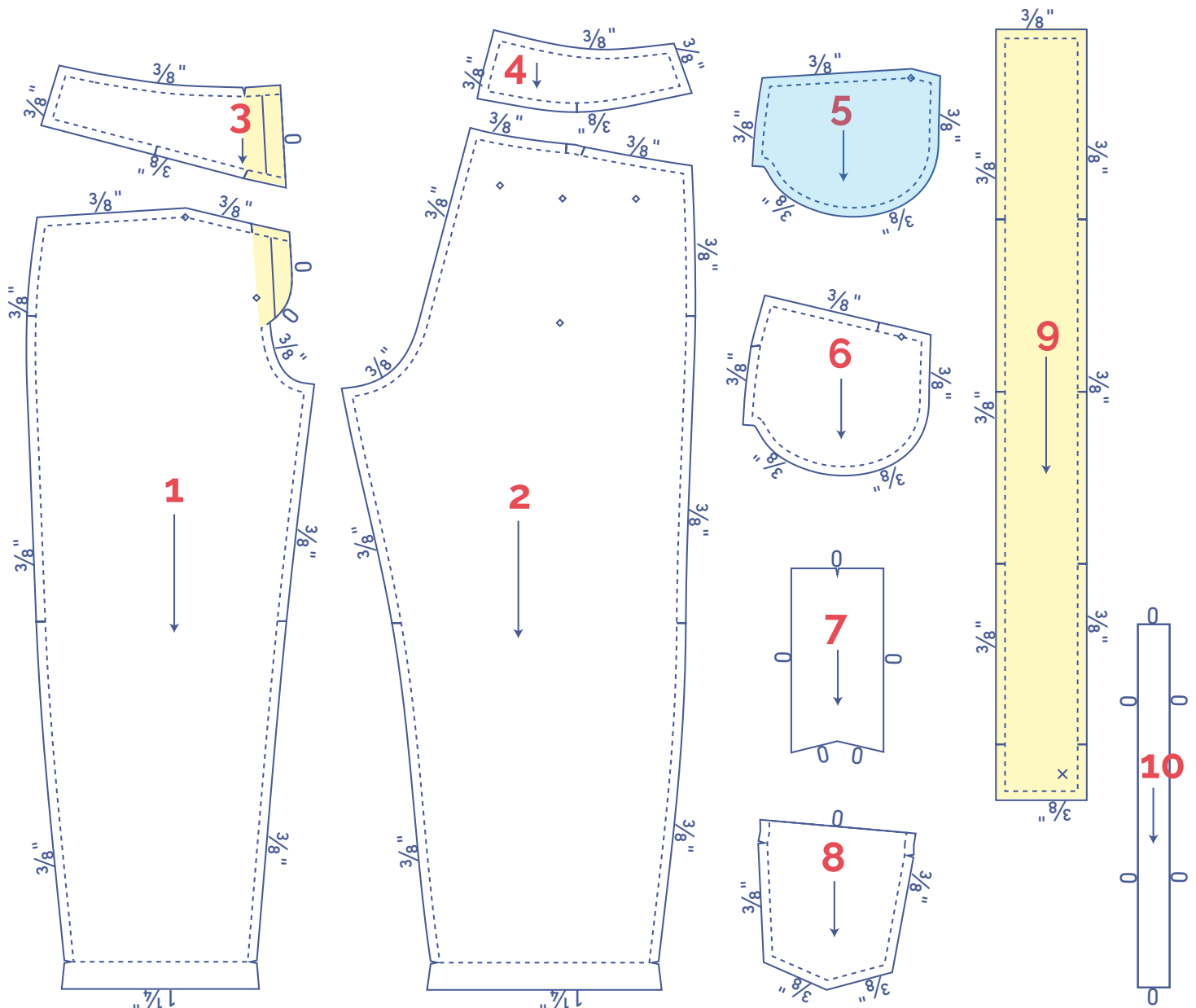
To find out more, watch the [video](#).

1. front: 2x
2. back: 2x
3. yoke front: 2x
4. yoke back: 2x
5. inner pocket bag: 2x
6. pocket opening: 2x
7. fly front: 1x
8. pocket: 2x
9. waistband: 1x
10. belt loops: 1x

IMPORTANT

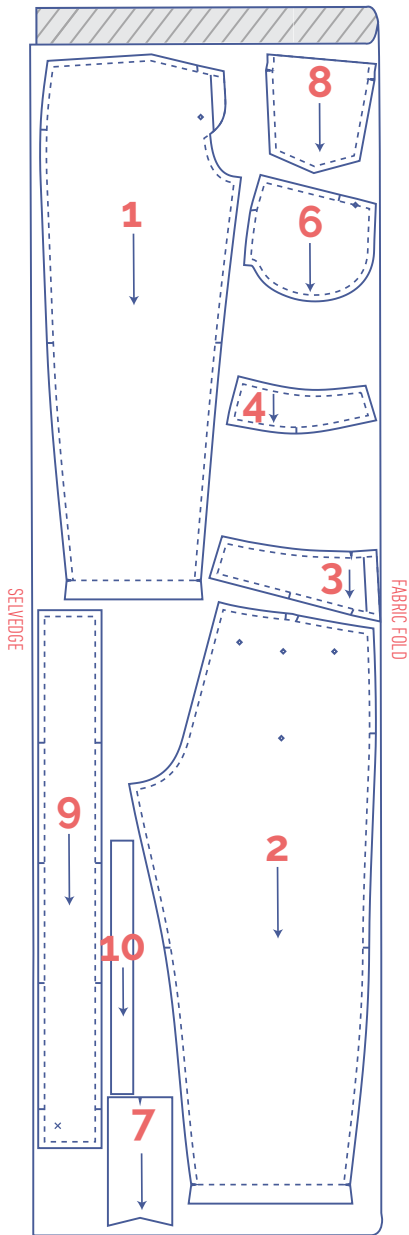
The pieces highlighted in light yellow have iron-on interfacing attached to the wrong side.

 material type	
	fabric
	light-weight fabric or lining
	iron-on interfacing



fabric layout – solid fabrics
fabric width 43"

0 - 8

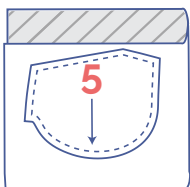


IMPORTANT

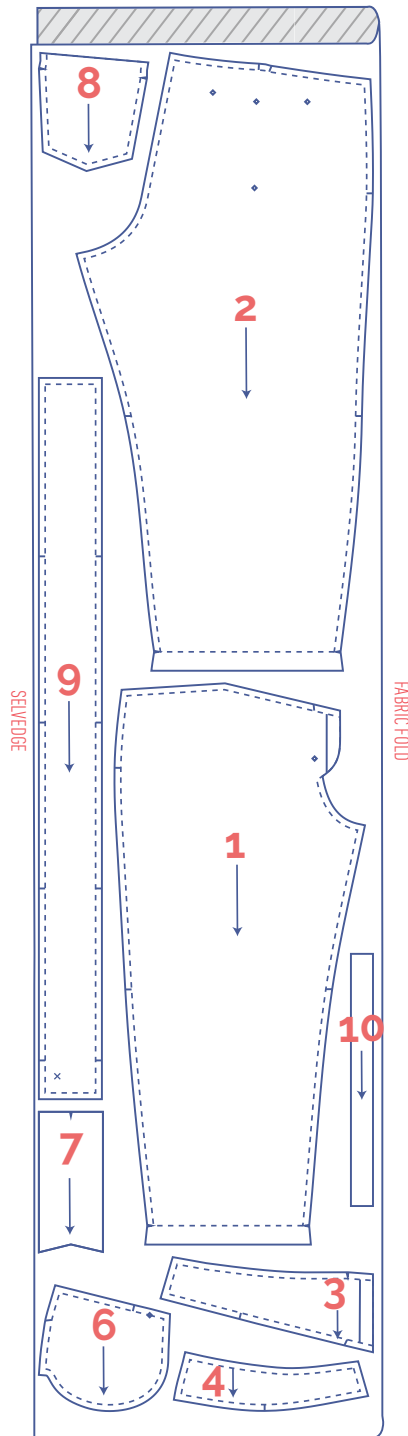
You only need pattern pieces 7, 9, and 10 once.

Lining

0 - 28



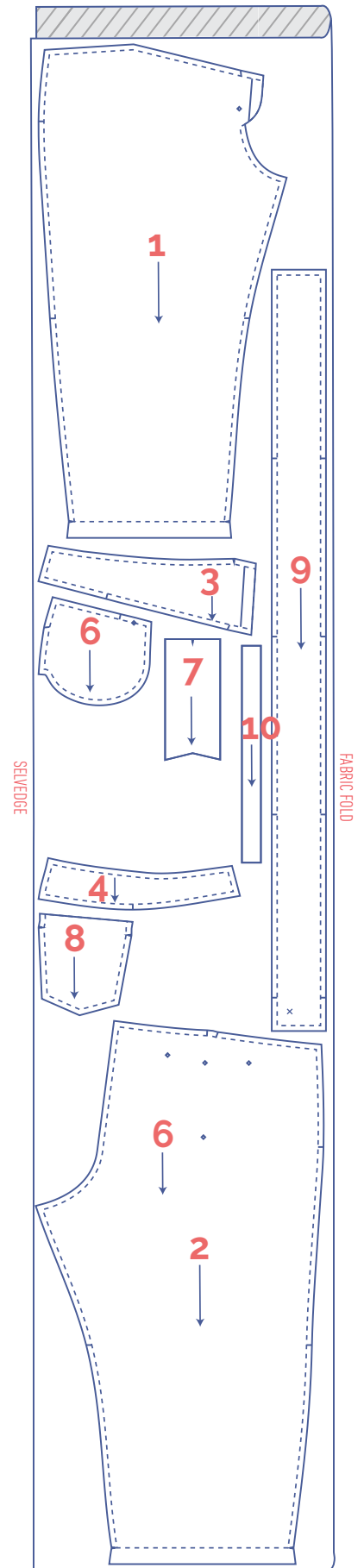
10 - 20



IMPORTANT

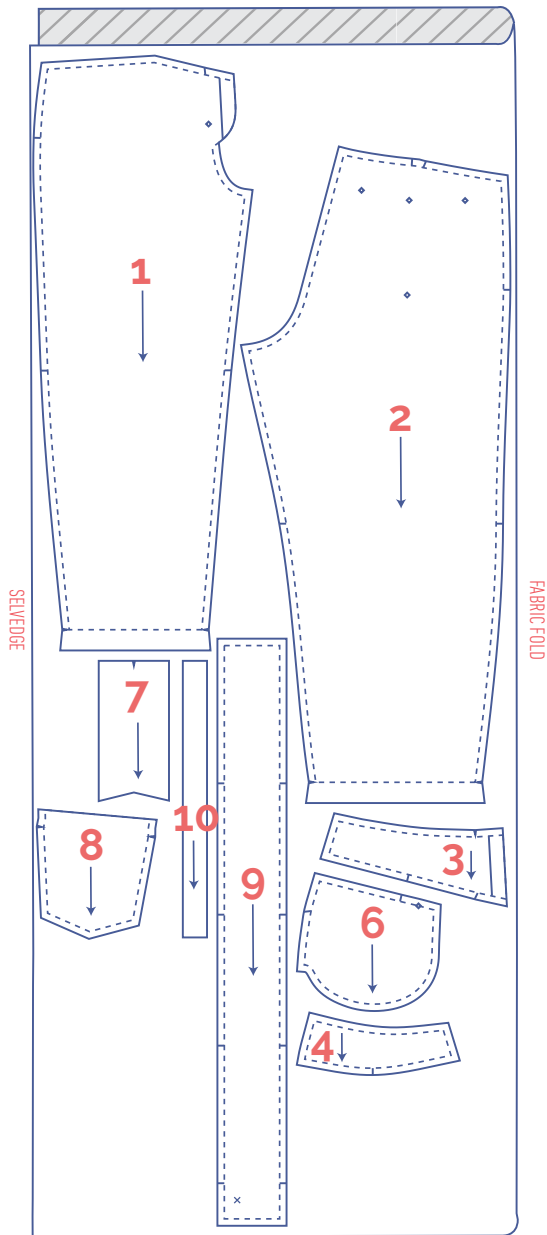
You only need pattern pieces 7, 9, and 10 once.

22 - 28



fabric layout – solid fabrics
fabric width 55"

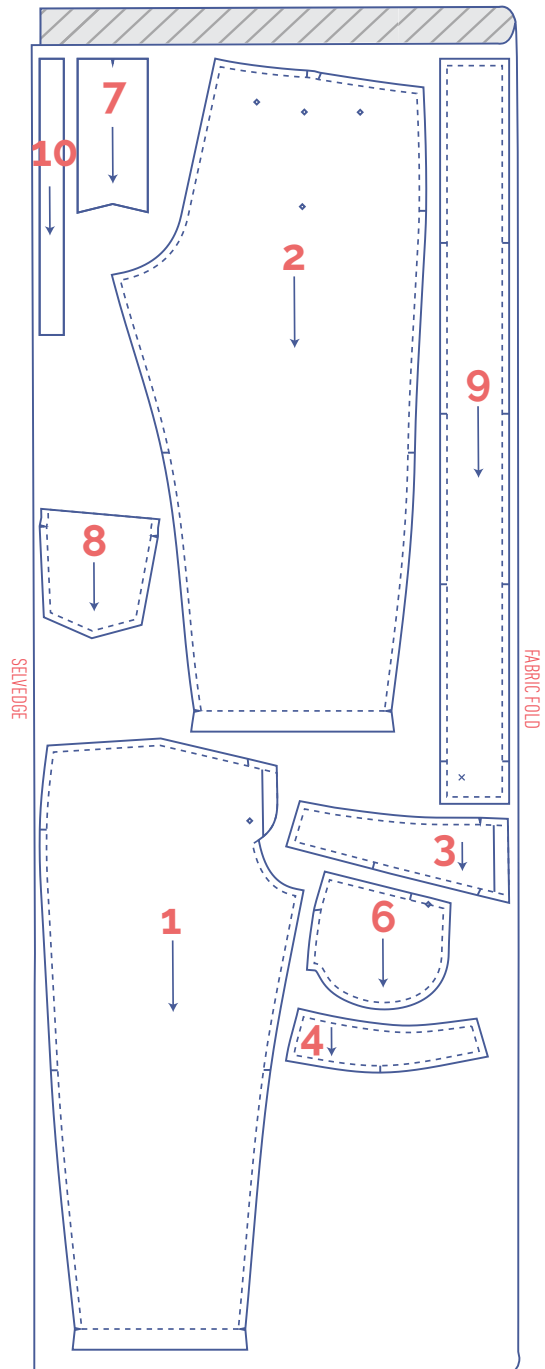
0 - 8



IMPORTANT

You only need pattern pieces 7, 9, and 10 once.

10 - 18



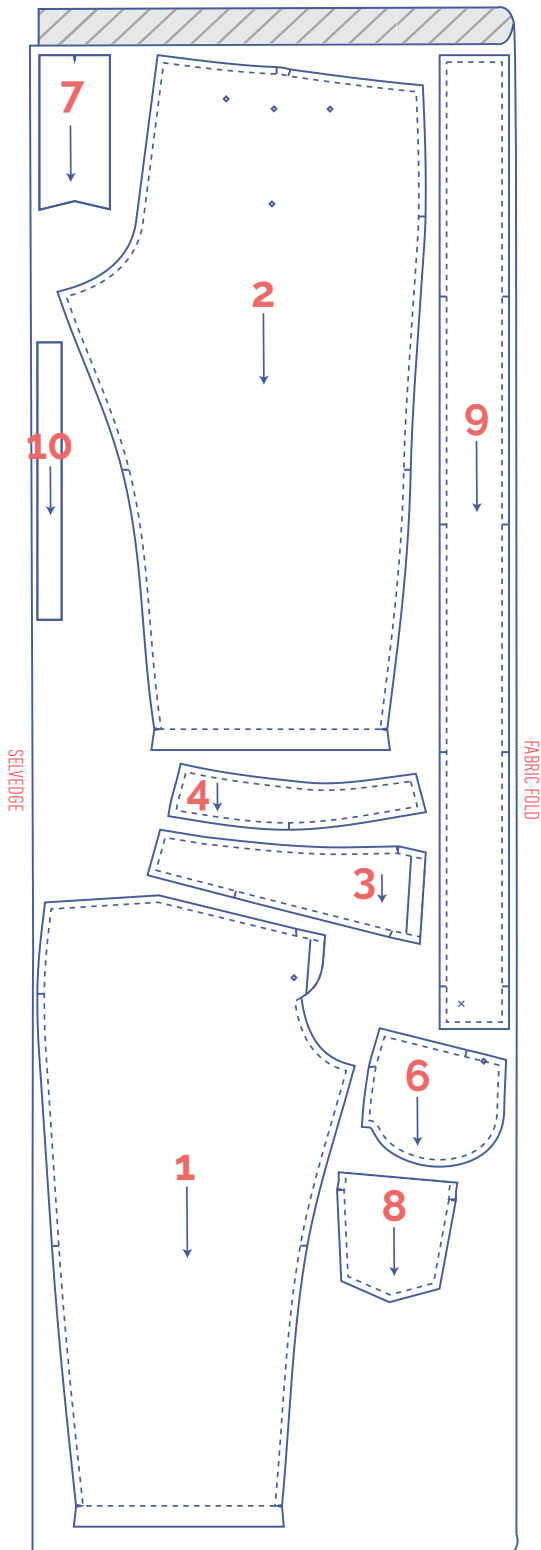
IMPORTANT

You only need pattern pieces 7, 9, and 10 once.

fabric layout – solid fabrics

fabric width 55"

20 - 28

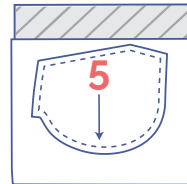


IMPORTANT

You only need pattern pieces 7, 9, and 10 once.

Lining

0 - 28



marking pattern pieces



Notch the pattern paper and fabric at the following points



single notch



V notch



Mark the following points using marking thread



centre point



buttons

sewing instructions



The method used to finish the seams depends on the fabric used.
The pieces are always sewn together with the right sides of the fabric facing, unless stated otherwise.

F front

B back

RF right front ●

LF left front ●

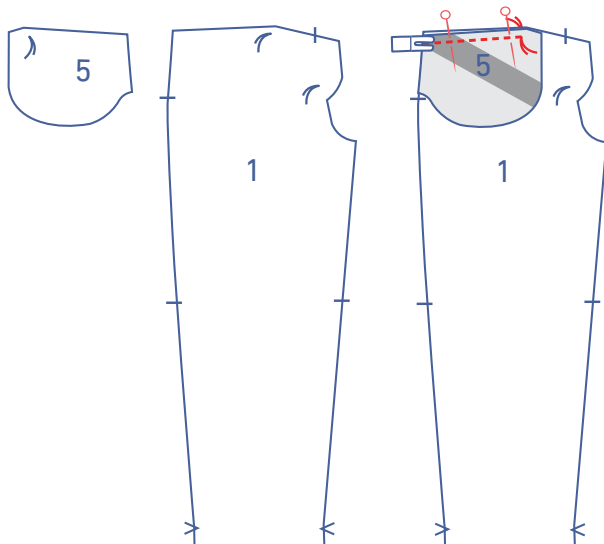
CF centre front

CB centre back

□ right side

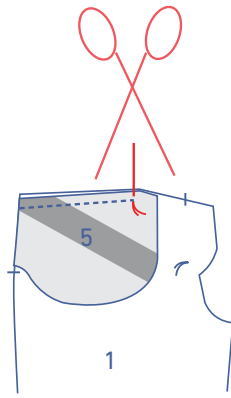
▨ wrong side

▨ iron-on interfacing

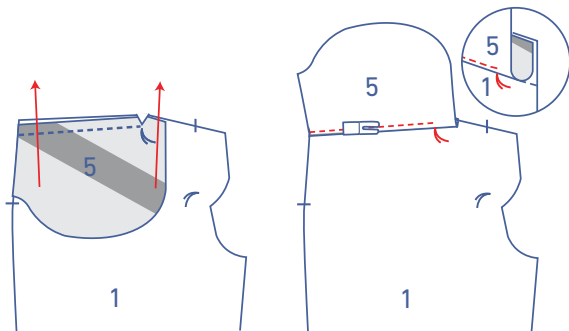


1

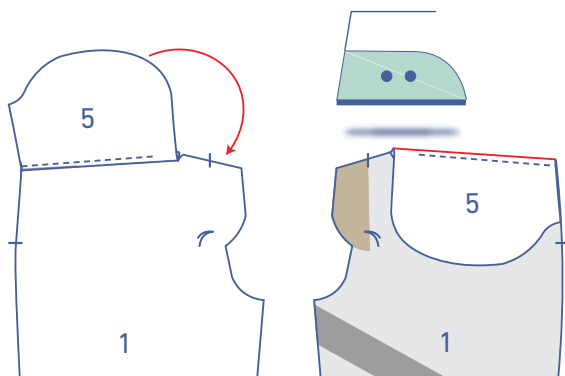
Pin the slanted end of the inner pocket bag (5) and the front (1) together. Sew from the side seam up to the marking thread.



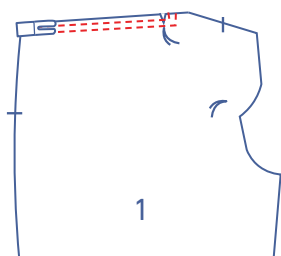
Snip vertically into seam allowances on both layers until just before the marking thread.



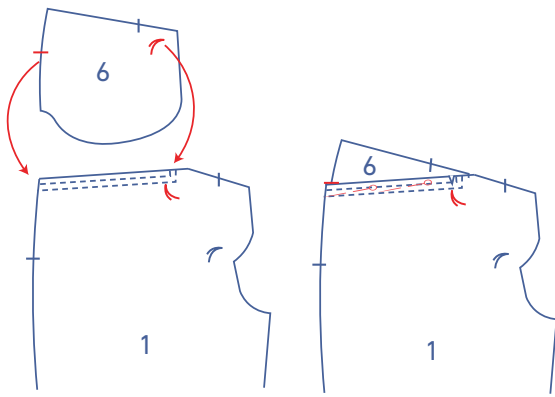
Fold the inner pocket bag up and stitch it to the seam allowance underneath, right next to the seam.



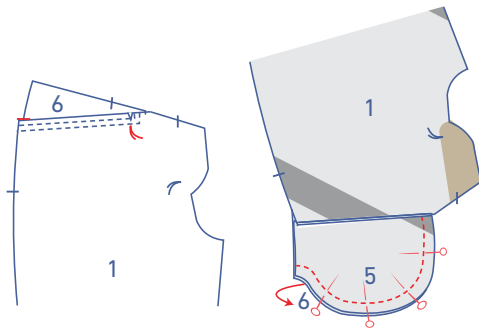
Fold the inner pocket bag all the way over to the wrong side. Press neatly flat.



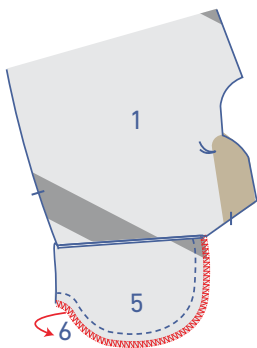
Sew two parallel lines of topstitching to the front, right next to the slanted edge.



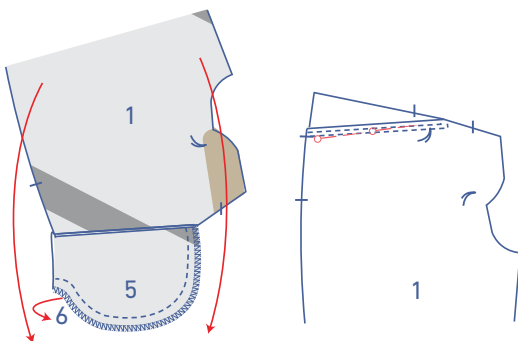
Slide the pocket opening (6) under the front, matching the notches and marking threads as shown. Pin temporarily into place.



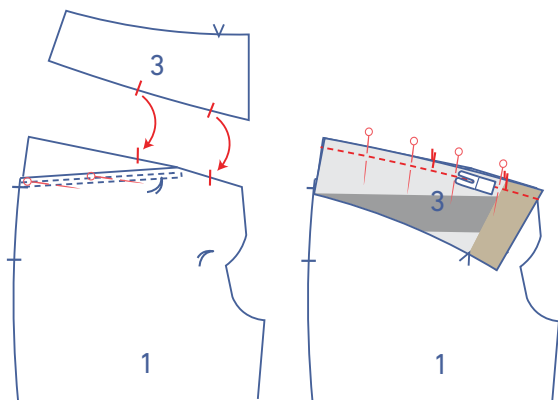
Fold the front up. Pin and sew the raw edges of the pocket pieces together.



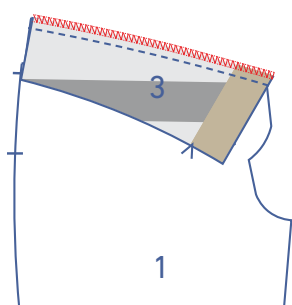
Finish the raw edges with overlock stitching.



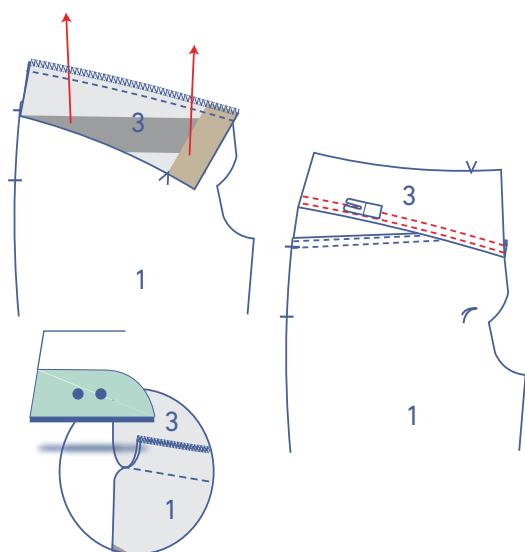
Fold the front back down. Pin the pieces temporarily into place.



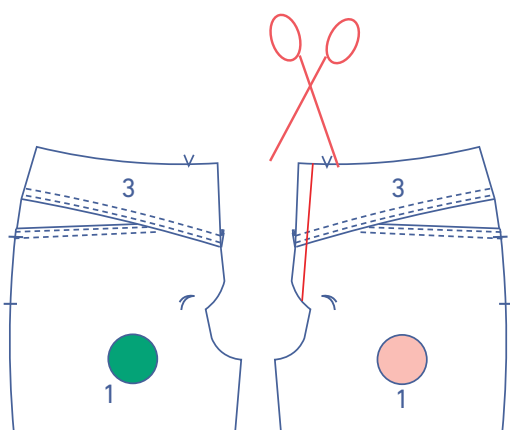
Pin and sew the slanted ends of the yoke front (3) and the front together, matching the notches.



Finish the raw edges with overlock stitching.

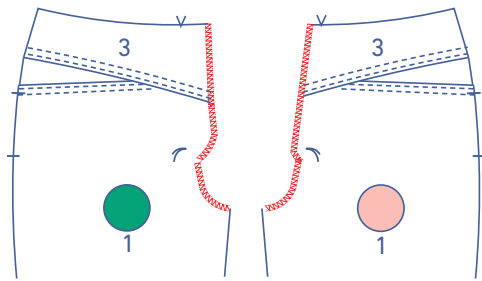


Press the seam allowance up and stitch the yoke with two rows of parallel topstitching, right next to the seam.

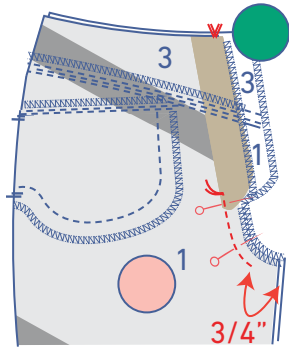


2

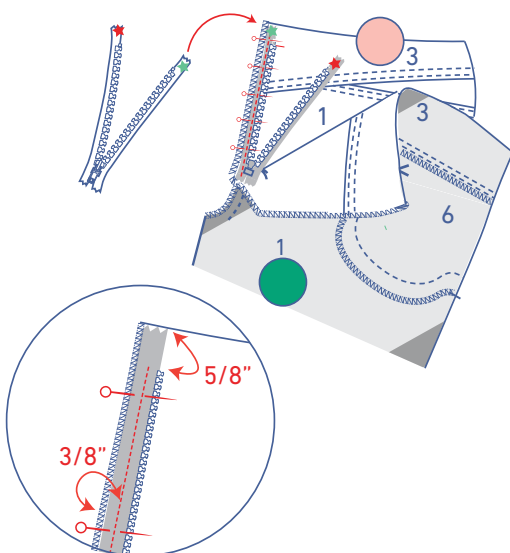
Cut a strip from the LF fly (pink dot) along the indicated line.



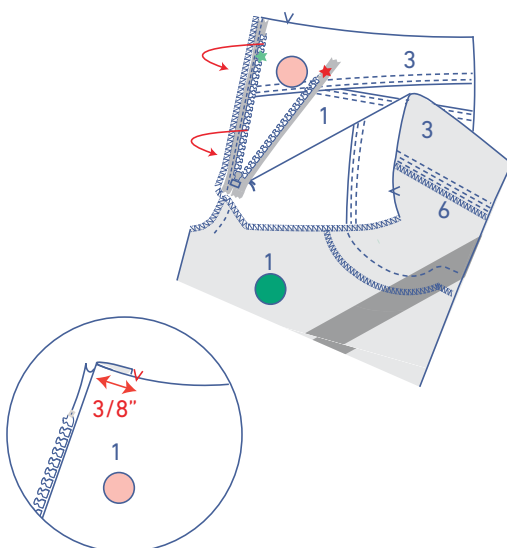
Finish the CF seams with overlock stitching.



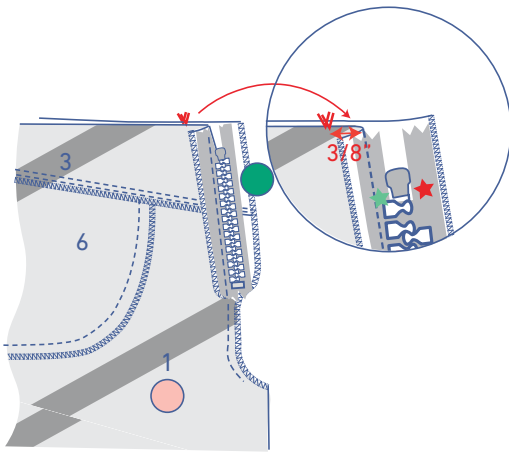
Pin the RF and LF right sides together, matching V notches and marking threads. Please note: the RF fly extends past the LF. Sew the CF seam from the marking thread to around $\frac{3}{4}$ " before the edge.



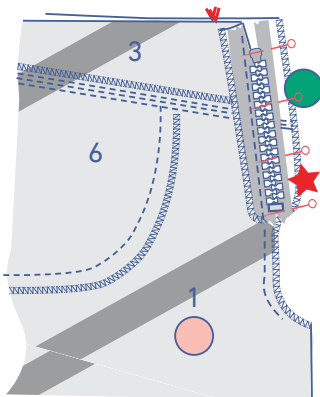
Start by placing the zip with the right side facing up. Open the zip and turn the green star zip tape to the right and onto the LF. The edge of the zip tape should be next to the overlocked stitching, and the zip teeth should start $\frac{5}{8}$ " under the top edge. Pin and sew into place at $\frac{3}{8}$ " from the CF seam (= the middle of the zip tape) with the zipper foot.



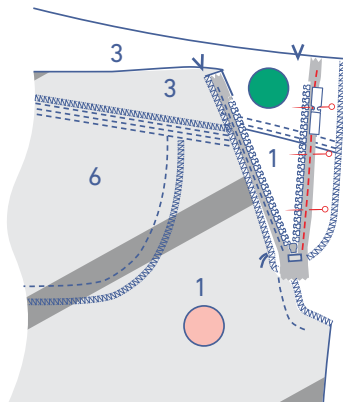
Next, fold the zip tape back to the left.



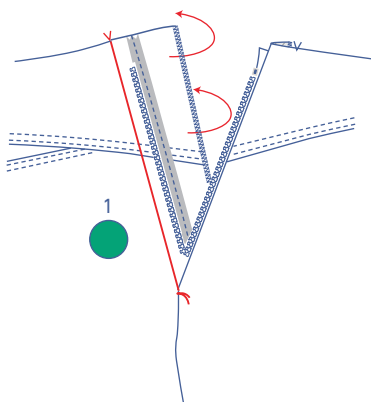
Close the zip and arrange the front pieces right sides together, making sure the V notches in the CF match. Press both front pieces neatly flat.



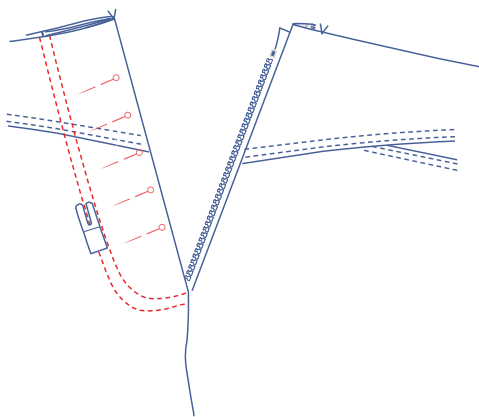
Pin the red star zip tape into place on the RF fly.



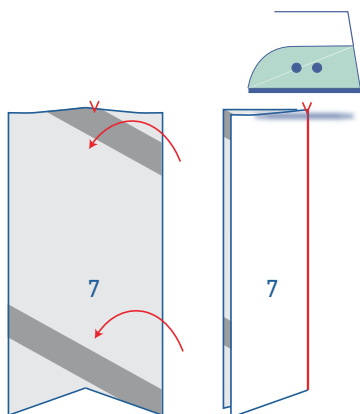
Open the zip and stitch the zip tape into place with the zipper foot.



Fold the RF fly facing over at the V notch.

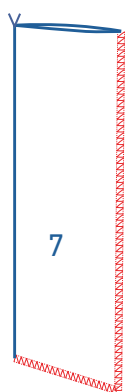


Pin into place and sew two lines of parallel top stitching along the edge of the fly facing on the right side of the fabric, anchoring all layers.

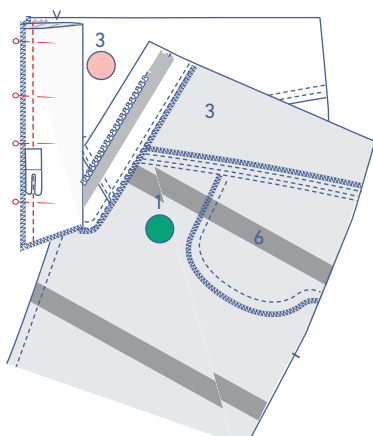


3

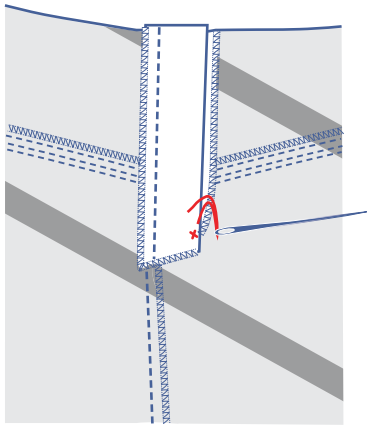
Press the fly LF (7) in half at the V notch with the long ends touching and the wrong sides facing.



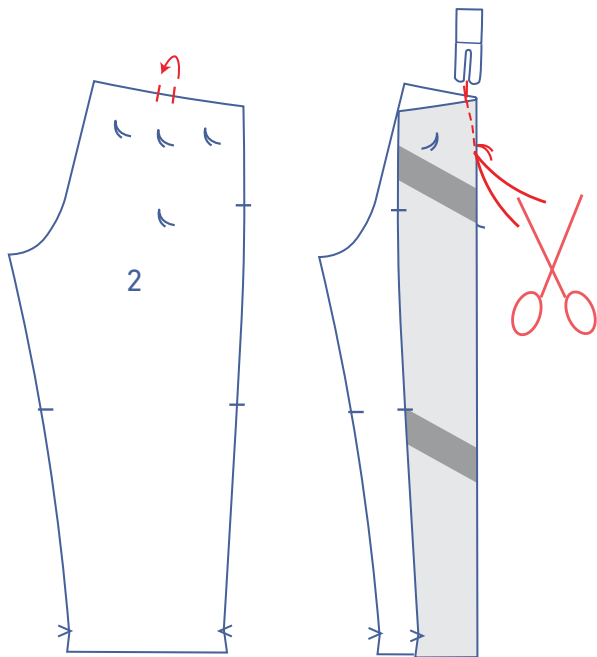
Finish the indicated raw edges with overlock stitching.



Pin and sew the fly to the seam allowance of the LF and zip.

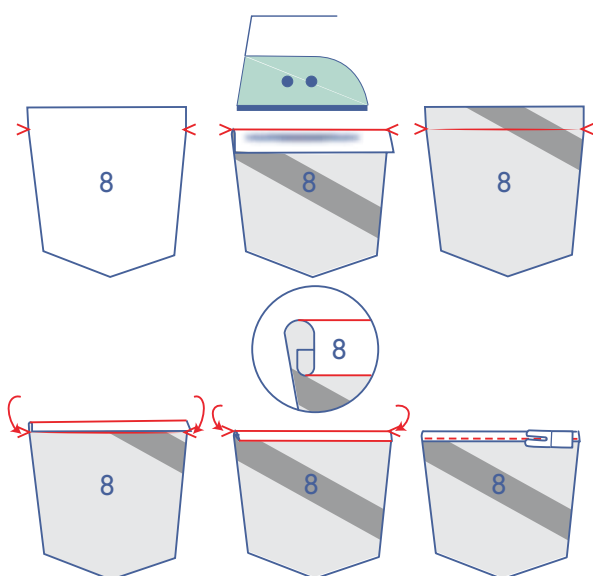


Press the fly over and close the zip. Hand sew the RF fly facing and the LF fly together at the bottom with just a few stitches.



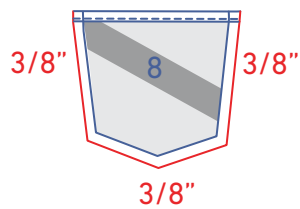
4

Fold the top of the back (2) together at the notches, right sides together. Sew the dart in a slightly curved line towards the marking thread. Stitch up to and just past the marking thread, so that you've sewn past the fabric. Snip the threads and make a knot.

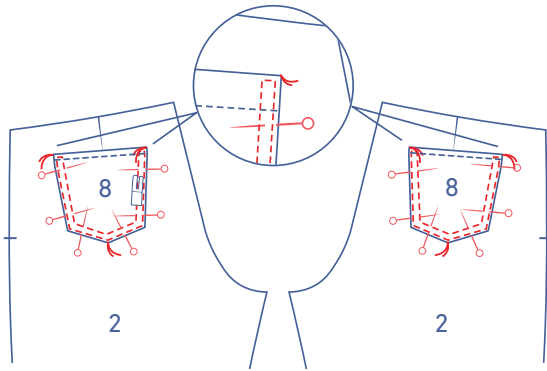


5

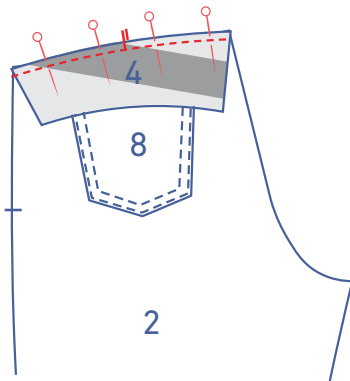
Press the top of the pocket (8) towards the wrong side at the V notches and open back out. Fold the raw edge to meet the pressed fold line and then fold over again. Edgestitch into place.



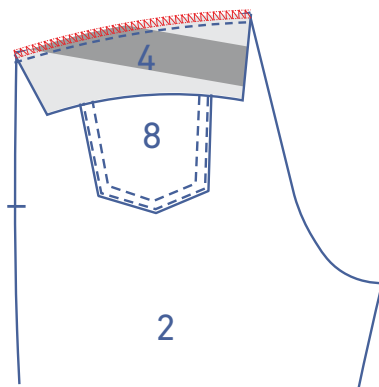
Press the remaining raw edges $\frac{3}{8}$ " over towards the wrong side as shown.



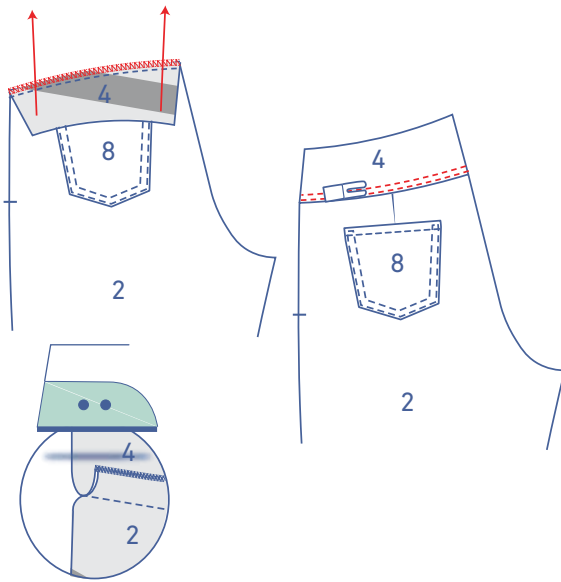
Pin the pocket to the back (2) where indicated. Edgestitch into place. Topstitch at presser foot width next to the first row of stitching. Finish with horizontal reinforcement stitching between the two lines of topstitching.



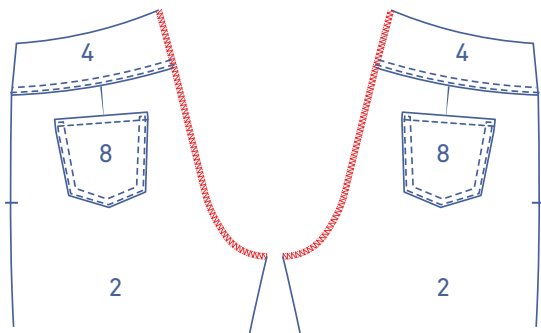
Pin and sew the slanted ends of the yoke back (4) and the back together, matching the notches.



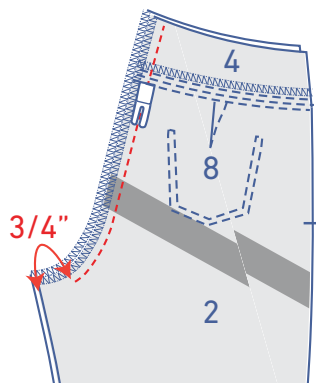
Finish the raw edges with overlock stitching.



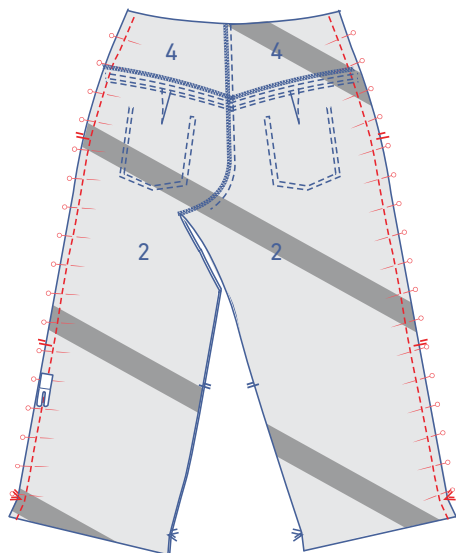
Press the seam allowance towards the yoke. Now, sew two rows of topstitching on the yoke. The first row is right next to the seam, the second row is presser foot width from the first row.



Finish the CB seams of both pieces with overlock stitching.

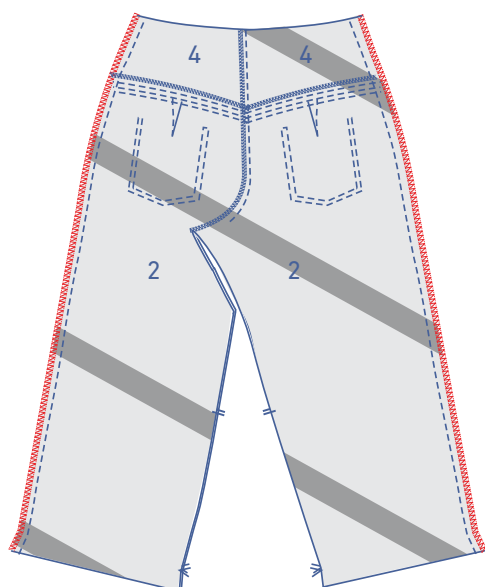


Pin and sew the CB seam, stopping approximately $\frac{3}{4}$ " from the edge of the inseams.

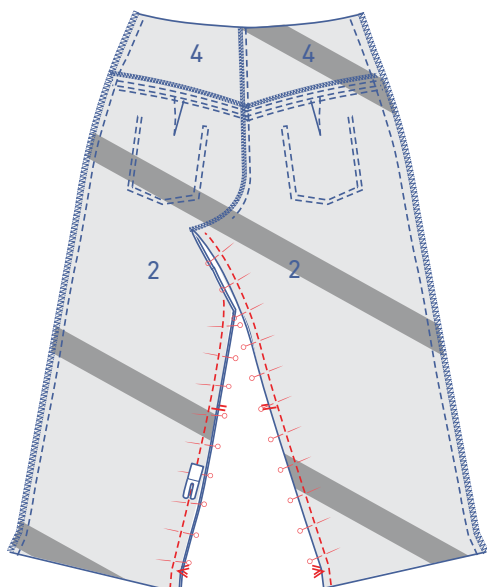


6

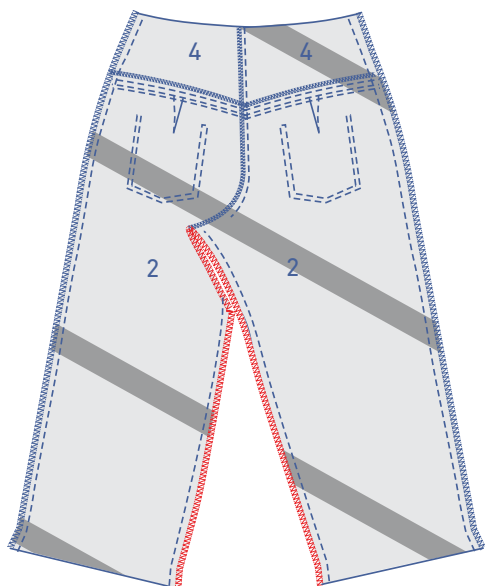
Pin and sew the side seams, matching the notches.



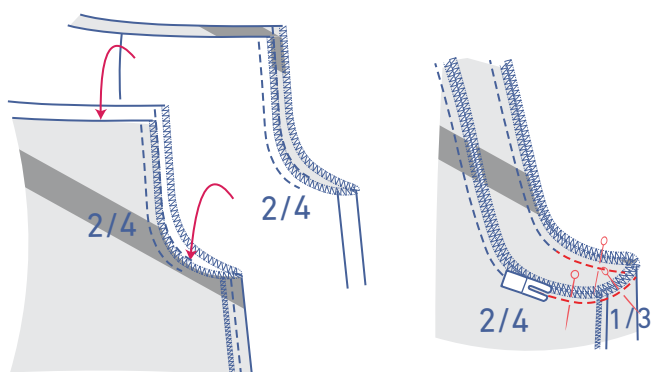
Finish the raw edges with overlock stitching.



Pin and sew the inseams, matching the notches.



Finish the raw edges with overlock stitching.

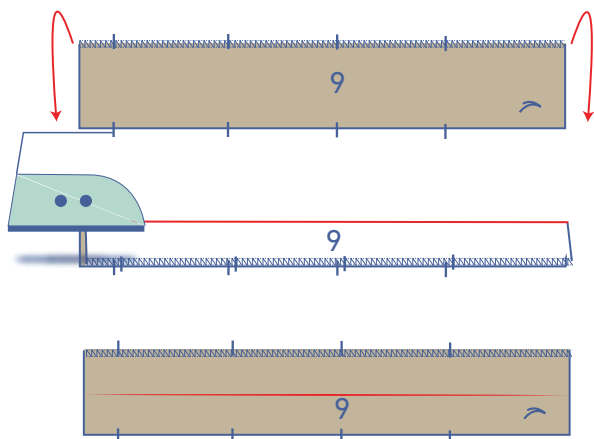


Slide one trouser leg into the other with the right sides of the fabric touching. Pin and sew the section of crotch seam that hasn't been stitched yet.



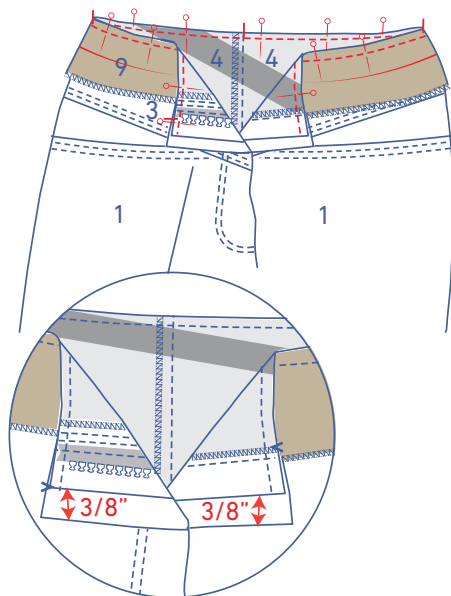
7

Finish the indicated long end of the waistband (9) with overlock stitching.

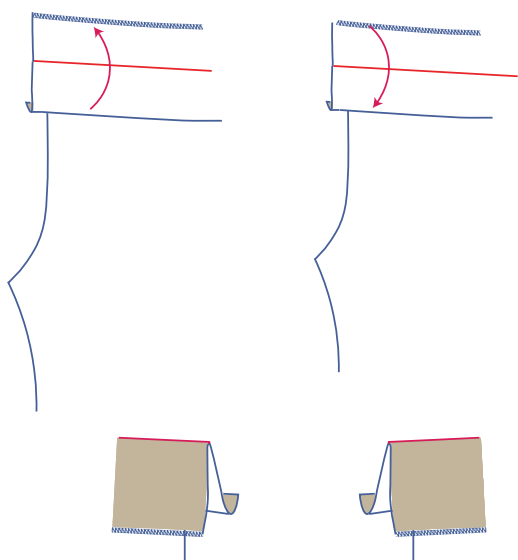


Press the waistband in half with the long ends touching and the wrong sides facing to create a fold line.

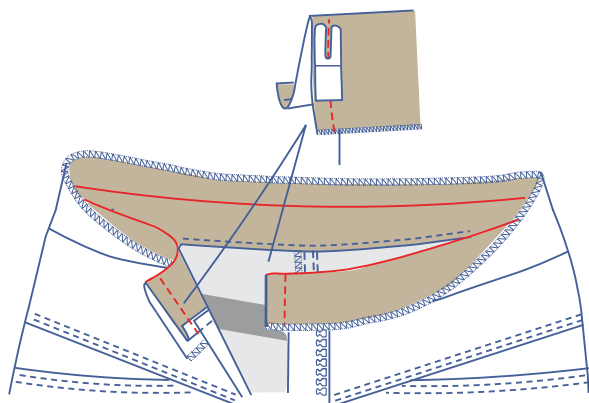
Open back out again.



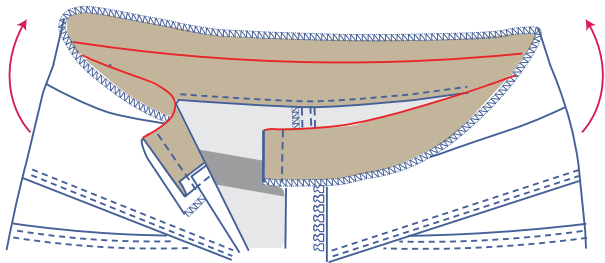
Pin and sew the waistband with the non-overlocked edge to the trouser waistline. Make sure the side seams and notches match. Each short end of the waistband should end $\frac{3}{8}$ " past the finished CF.



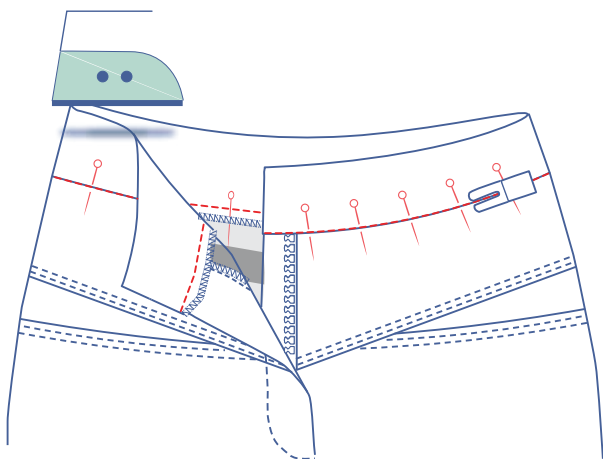
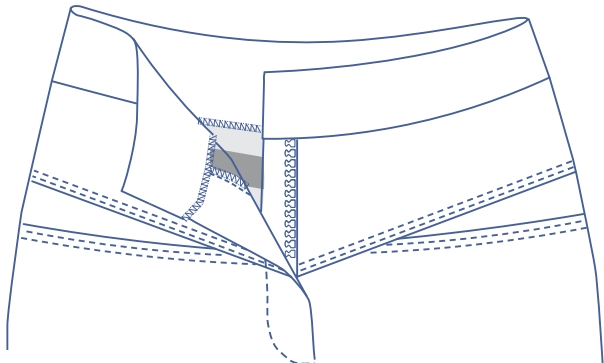
First, fold the waistband all the way up. Then fold the overlocked top part of the waistband back down along the fold line so that the right sides of both waistbands are touching. The folded edge should be $\frac{3}{8}$ " away from the overlocked edge, see following diagrams.



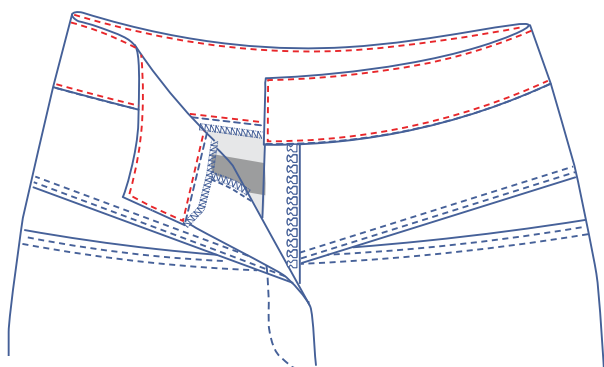
Sew the short ends.



Turn the waistband the right side out.



Press the waistband neatly flat and pin the front and back of the waistband together along the right side. Stitch in the ditch.

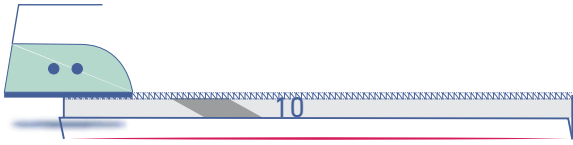


Edgestitch into place all the way around.

8



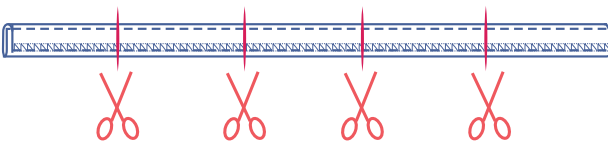
Finish 1 long end of the belt loops (10) with overlock stitching.



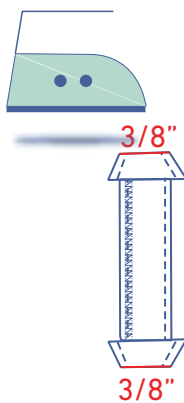
Press the unfinished end towards the wrong side, and then press the overlocked end over this.



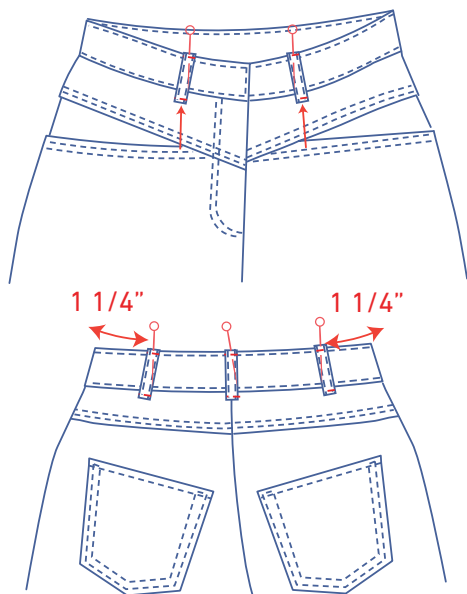
Stitch into place right next to the edge of both ends.



Cut into 5 equal parts.



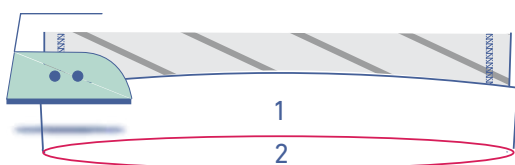
Press the top and bottom ends of each belt loop $\frac{3}{8}$ " over towards the wrong side.



Pin the belt loops on where indicated. Stitch the belt loops into place at the top and bottom, right next to the edge.

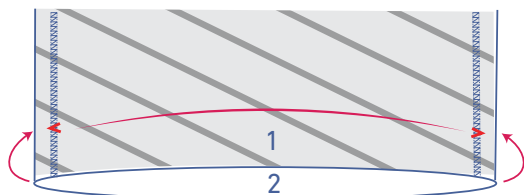
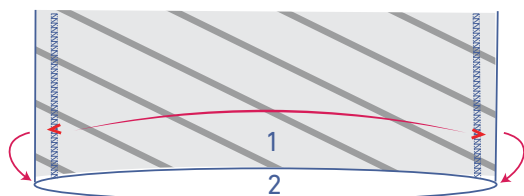
On the front: each belt loop should be more or less parallel to the inside corner of each pocket.

On the back: one loop should be over the CB, while the other two should be 1 1/4" away from their respective side seams.

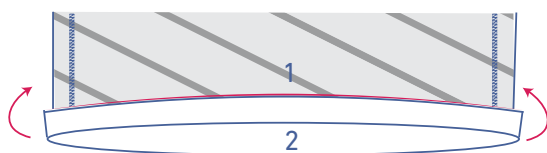


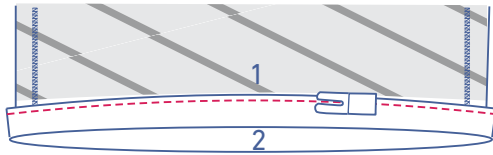
9

Press the hem allowance up at the V notches and then open back out.

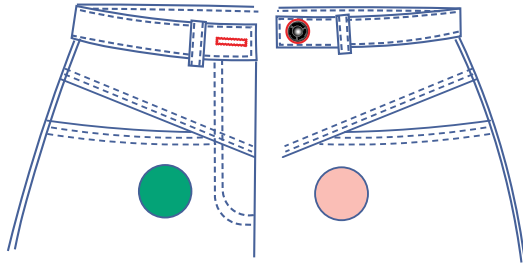


Press the raw edge up to meet the fold line, then fold over once more.





Stitch the hem allowance into place right next to the seam.



10

Attach the (jeans) button to the waistband on the LF side where indicated and make a horizontal buttonhole across from this in the waistband of the RF side.