

Amira by Fibre ⚡ood



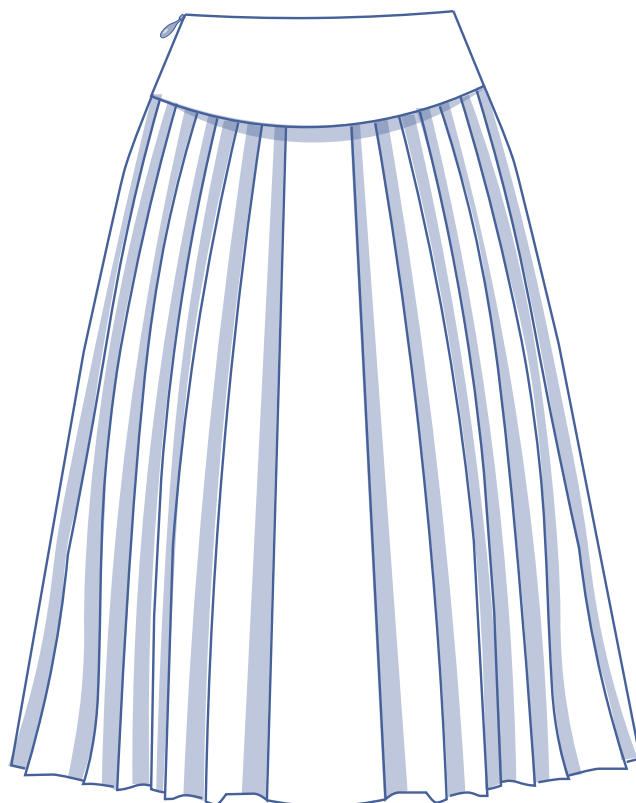
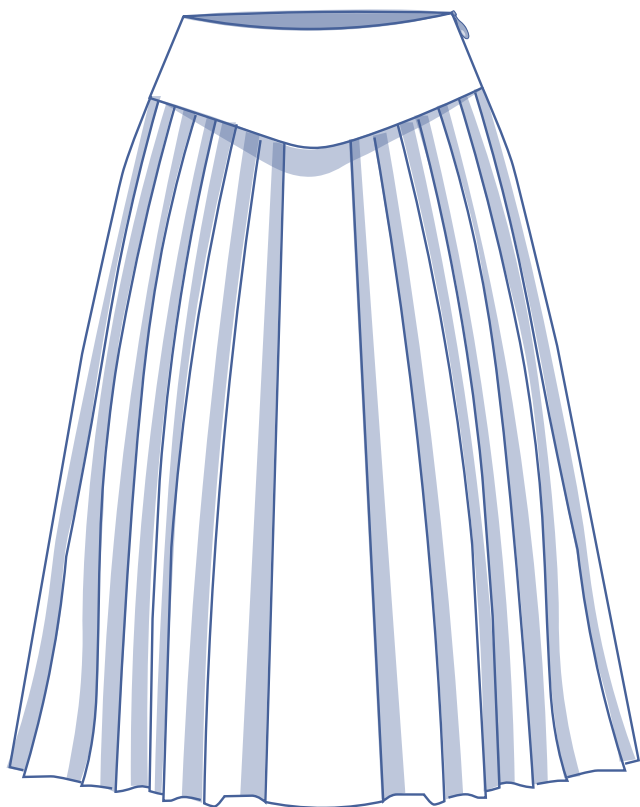
Amira Fibre ood



0 - 28

Attention please! Amira is our ode to the skirt – a lovely pleated skirt. The yoke shows off the fitted waist area, and the skirt drapes effortlessly over the hips for a soft, feminine look. We made a trendy mid-length version, but Amira looks lovely longer or shorter too.

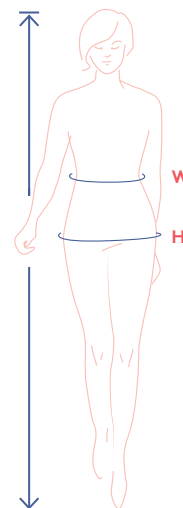
For a smashing outfit, pair with our Tilly top in the same fabric to make a co-ord set. Skirt lovers, what are you waiting for?



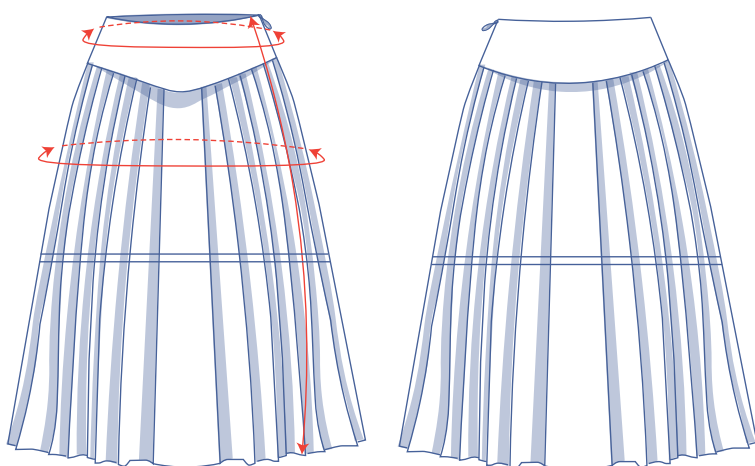
size chart (in inches)

size	0	2	4	6	8	10	12	14	16	18	20	22	24	26	28
body height	5'25"	5'38"	5'45"	5'48"	5'51"	5'54"	5'58"	5'61"	5'64"	5'64"	5'64"	5'64"	5'64"	5'64"	5'64"
W (waist)	26	26.8	27.6	29.1	30.7	32.3	33.1	34.6	37.2	39.8	42.3	44.9	47.4	50	52.6
H (hips)	33.9	35.4	37	38.2	39.4	40.6	41.7	42.9	45.3	47.2	49.2	51.2	53.1	55.1	57.1

Choose your size based on your **waistline measurement**. Pick the size that matches your waistline measurements best. The chart below lists your hip measurement with pleat allowances.



pattern measurements (in inches)



== shorten or lengthen the pattern here

This chart's measurements are the pattern measurements based on the fabric type and serve as a reference.

Please note that in order to achieve a fitted cut around the waist, the finished waistline measurement is smaller than the body measurements on the sizing chart.

size	0	2	4	6	8	10	12	14	16	18	20	22	24	26	28
side length	33.7	33.8	33.9	34	34.1	34.2	34.4	34.5	35	35.1	35.2	35.3	35.5	35.6	35.7
waistline measurement	25.7	26.4	27.2	28.8	30.4	32	32.7	34.3	36.9	39.4	42	44.6	47.1	49.7	52.2
hips*	96.3	97.9	99.5	100.6	101.8	103	104.2	105.4	107.7	109.7	111.7	113.6	115.6	117.6	119.5

* Including pleat allowances.

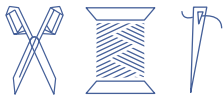
Compare the stated lengths to the measured or desired lengths. **Lengthen** or **shorten** the skirt by cutting the pattern pieces at the indicated double lines. Then either increase the distance between the cut pieces by the desired amount (to lengthen), or overlap the pieces (to shorten). Make sure that the CF and CB lines and the side seams are always straight.



IMPORTANT

Adjust the amount of fabric to be used based on these alterations.

notions



- Thread
- Iron-on interfacing: max. 5/6 yd
- Invisible zip: 8"
- Hook-and-eye closure
- Fabric: see table

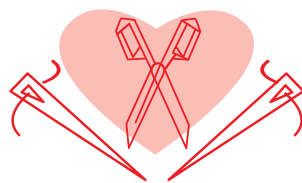
fabric		0	2	4	6	8	10	12	14	16	18	20	22	24	26	28
fabric width 43"	yd	4	4	4	4	4	4	4 ½	4 ½	4 ½	4 ½	4 ½	4 ½	4 ½	4 ½	4 ½
fabric width 55"	yd	2 ¼	2 ¼	2 ¼	2 ¼	3 ¼	3 ¼	3 ¼	3 ¼	3 ¼	3 ¼	3 ¼	3 ¾	3 ¾	3 ¾	4 ¼

The corresponding fabric layout can be found on page 6 of these sewing instructions.

fabric advice For Amira, you want fabric that retains its shape (read: nice, neat pleats!) after pressing. Polyester, polyamide, and poplin do that best. However, lyocell or fabric with a somewhat softer drape – e.g. viscose (crepe) – will also work. In that case, the pleats will be a little more relaxed. Amira also looks fabulous in leather(ette), chambray, suede and satin. We can't wait to see your version!



Proud to be #Sewista



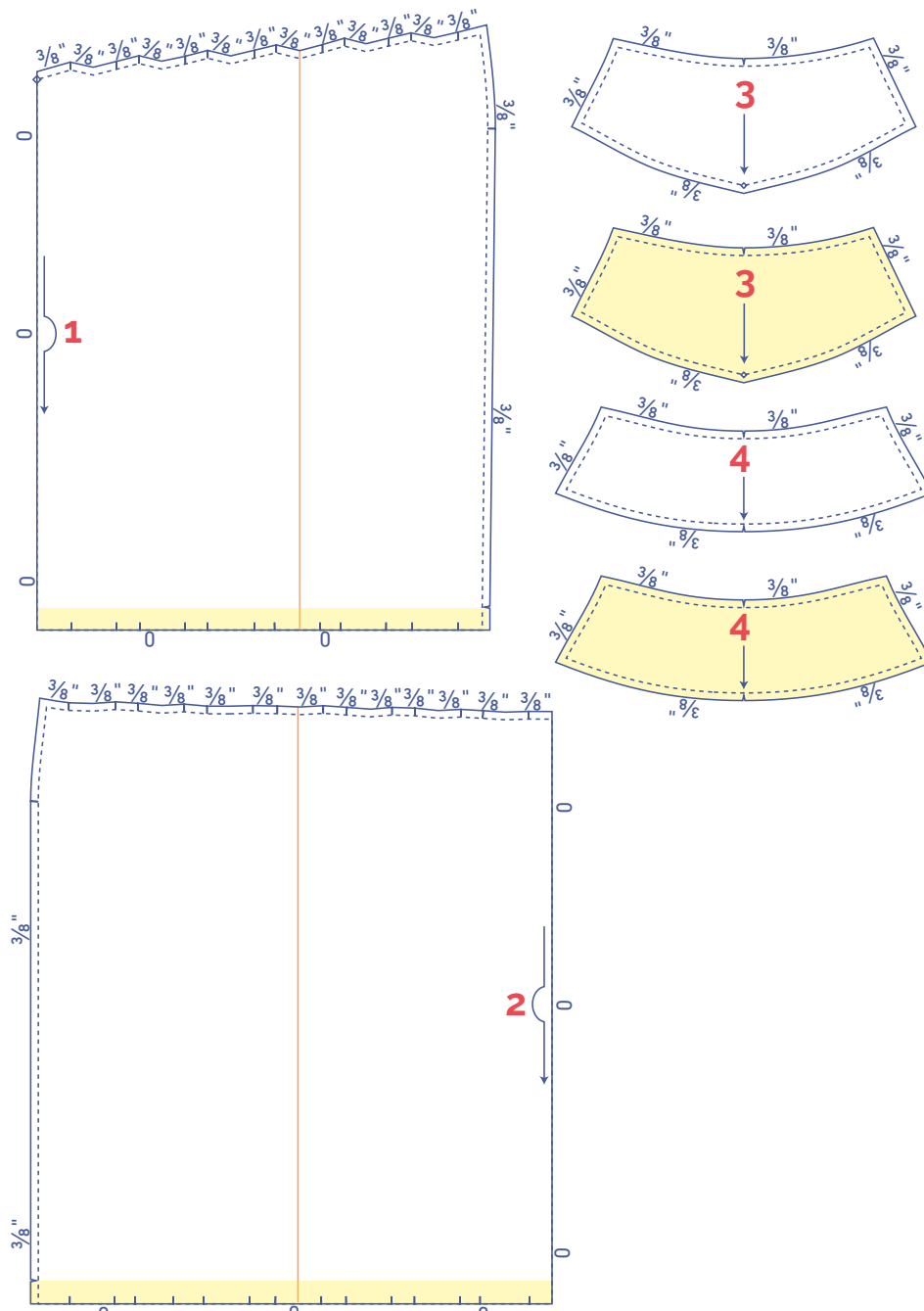
pattern pieces & seam allowances (in inches)

To sew the garment as described in the instructions, draw the illustrated seam allowances around the paper pattern pieces before cutting them out. If you are using a PDF pattern, the pattern can be printed with or without seam allowance. To find out more, watch the [video](#).

1. front: 1x on fabric fold
2. back: 1x on fabric fold
3. yoke front: 2x
4. yoke back: 2x

IMPORTANT

Depending on the size you choose / fabric width, it may be that pattern pieces 1 and 2 don't fit on the fabric. Instead, for each piece, cut your paper pattern into two at the orange line as indicated on the pattern piece drawings. Add a 3/8" seam allowance on both pieces. Then find the correct layplan (next few pages) to cut out the fabric. Sew the pieces together (1A+1B and 2A+2B) and finish the edges with overlocking before following the sewing instructions.



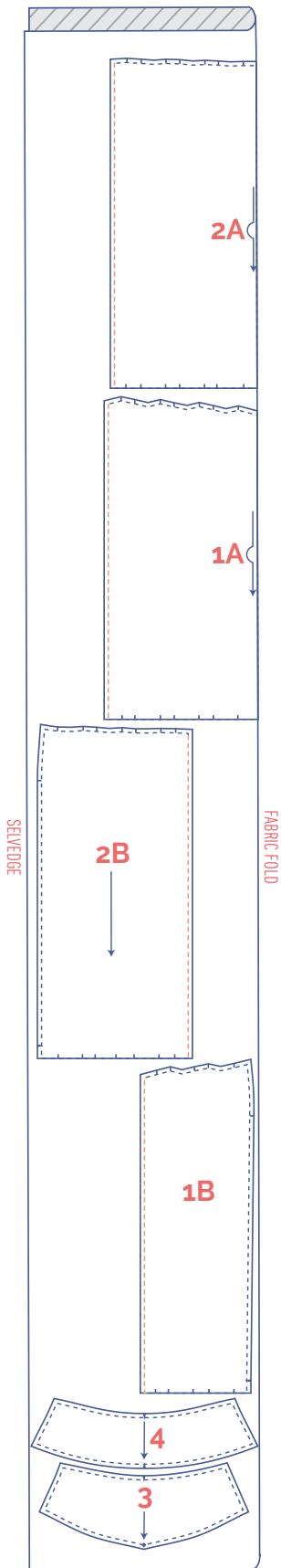
IMPORTANT

The pieces highlighted in light yellow have iron-on interfacing attached to the wrong side.

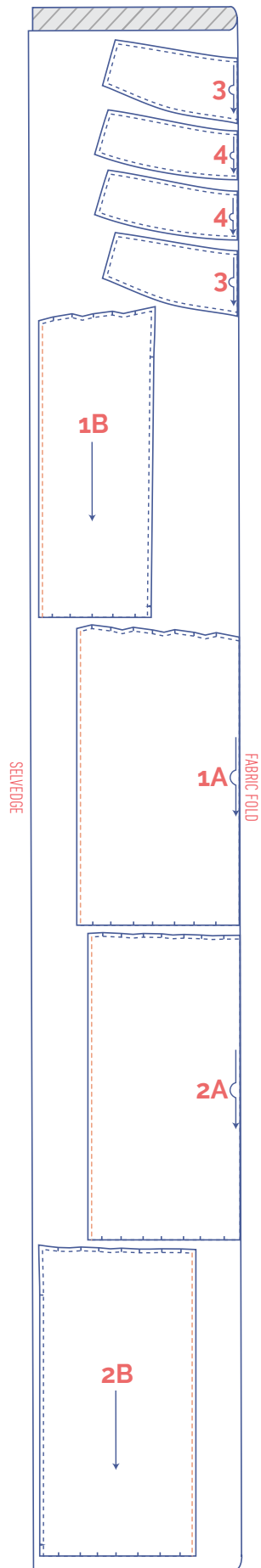
	material type
	fabric
	iron-on interfacing

**fabric layout – solid fabrics
fabric width 43"**

0 - 10



12 - 28



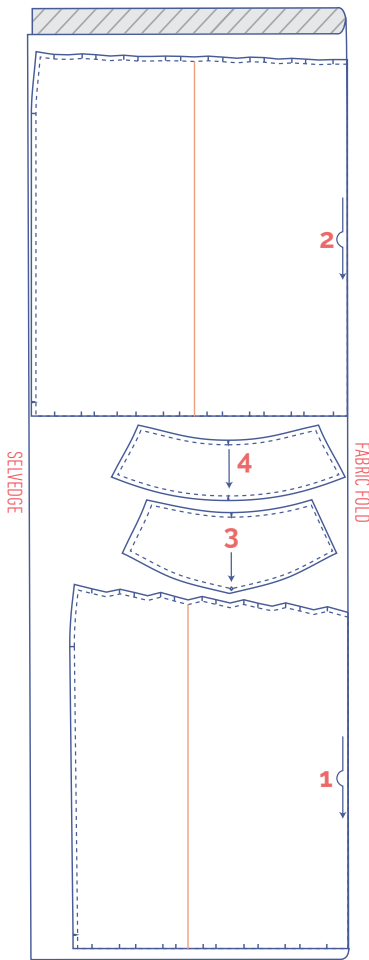
IMPORTANT

Pattern pieces 1 and 2 cannot be cut from this fabric width. Refer to the previous page for instructions on what to do in this instance.

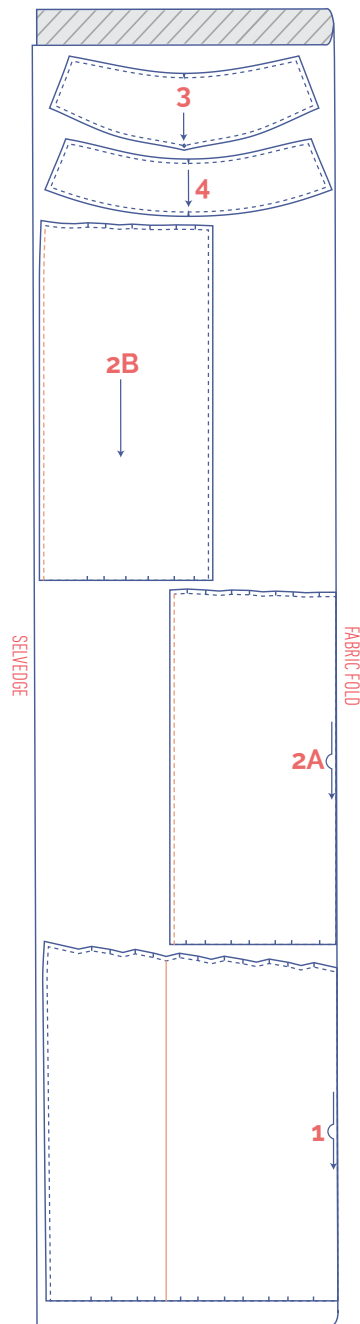
For sizes 26-32, pattern pieces 3 and 4 have been folded in half at the CF and CB and are included twice on the fabric fold.

fabric layout – solid fabrics fabric width 55"

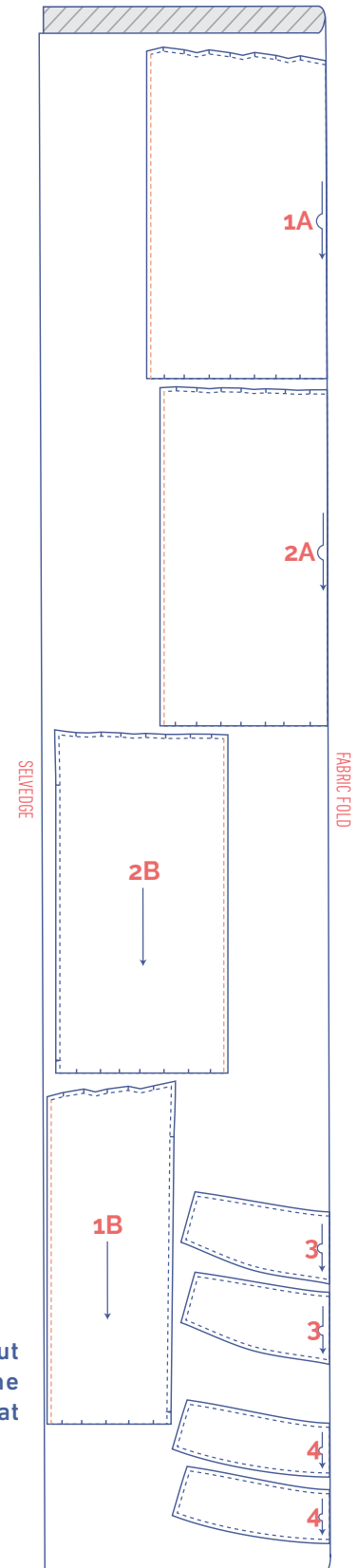
0 - 6



8 - 20



22 - 28



marking pattern pieces



Notch the pattern paper and fabric at the following points

| single notch

|| double notch

V V notch



Mark the following points with marking thread



centre point

IMPORTANT

Pattern pieces 1 and 2 cannot be cut from this fabric width. Refer to the previous page for instructions on what to do in this instance.

IMPORTANT

For sizes 26-32, pattern pieces 3 and 4 have been folded in half at the CF and CB and are included twice on the fabric fold.

sewing instructions



The method used to finish the seams depends on the fabric used. The pieces are always sewn together with the right sides of the fabric facing, unless stated otherwise.



F	front

B	back

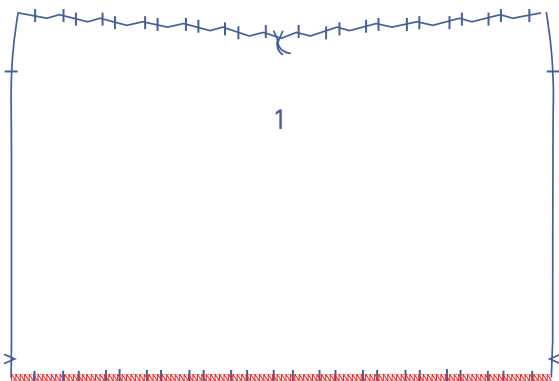
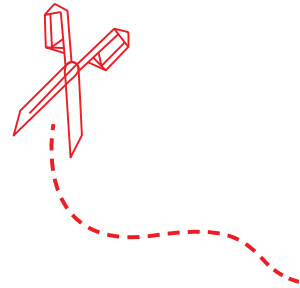
CF	centre front

CB	centre back

	right side

	wrong side

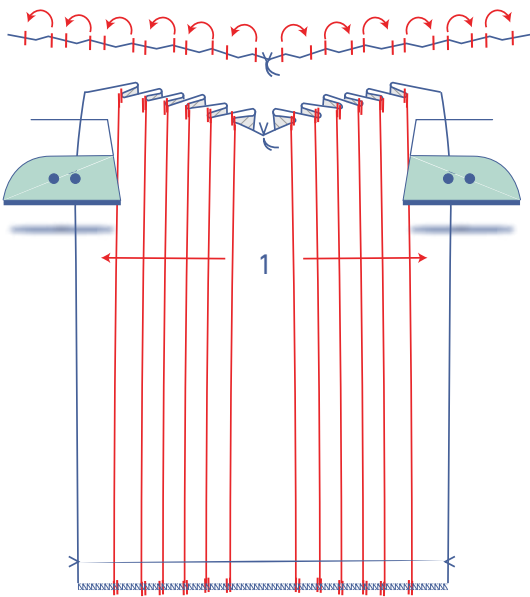
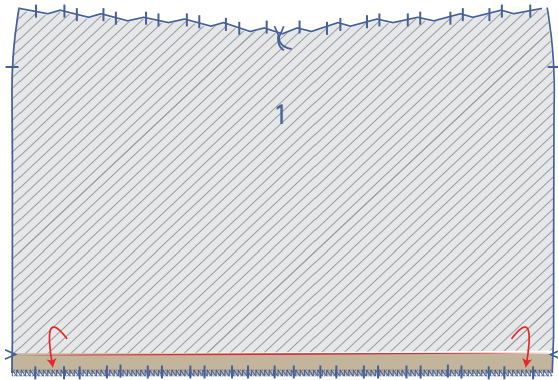
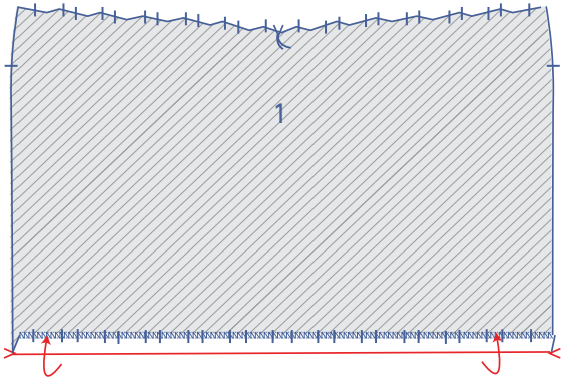
	iron-on interfacing



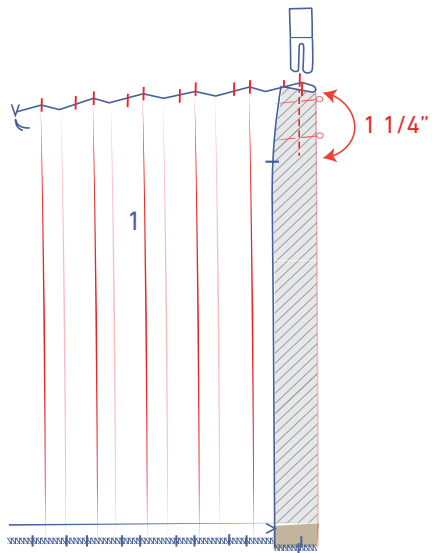
1

Finish the hemline of the front (1) with overlock stitching.

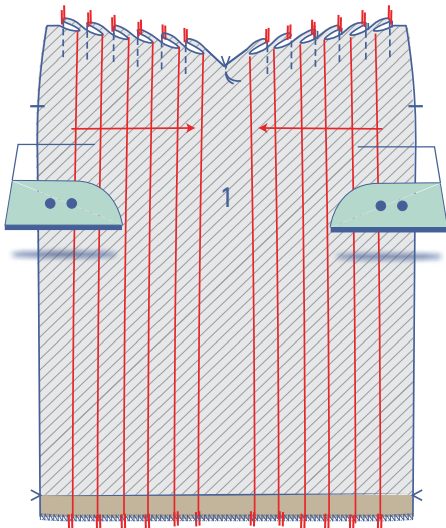
Press the hem allowance up at the V notches to create a fold line. Then open back out.



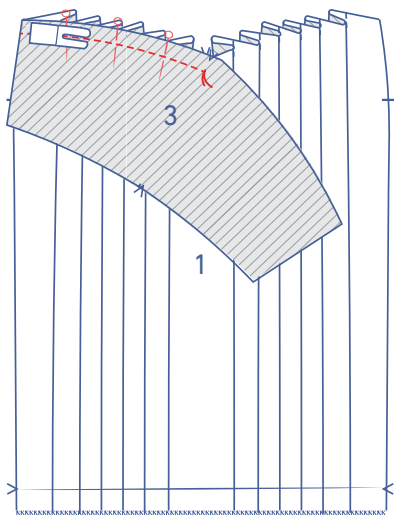
Match all notches at the top and bottom with the wrong sides of the fabric touching. Press the pleats into the fabric.



Sew 1 1/4" of vertical stitching at the top of each pleat.

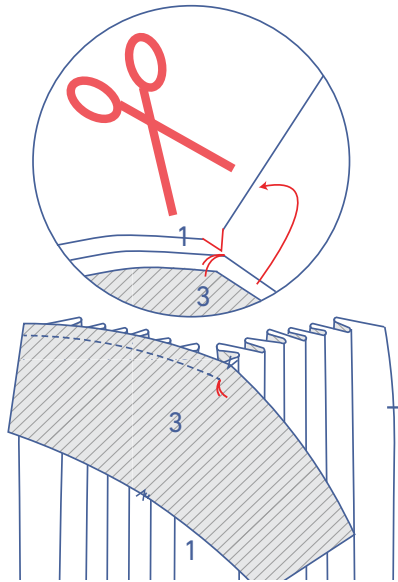


Turn the front over so that the wrong side is facing up. Press the pleat allowances in the directions indicated.

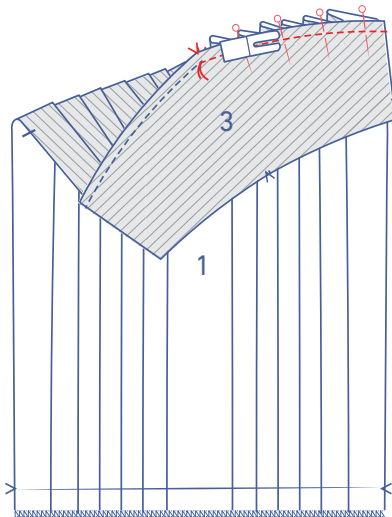


Turn over the front again so the right side is facing up. Pin the slanted end of the bottom of one yoke front (3) to the top of the skirt front. Sew up to the marking thread and leave the needle in the fabric there.

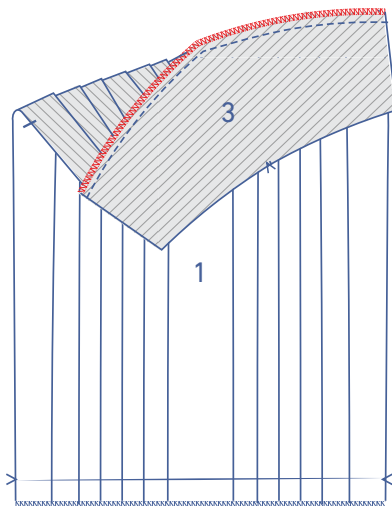
Raise the presser foot and snip into the seam allowance of the front. Pivot the garment and lower the presser foot back down.

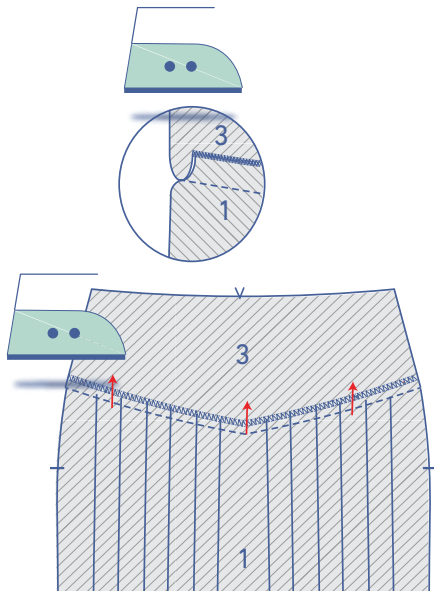


Continue sewing the other slanted end.

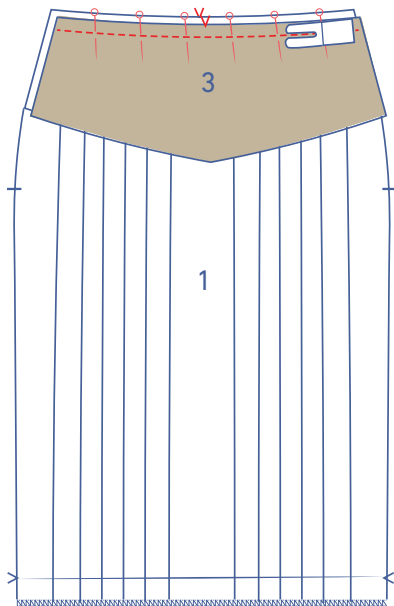


Finish the raw edges together with overlock stitching.

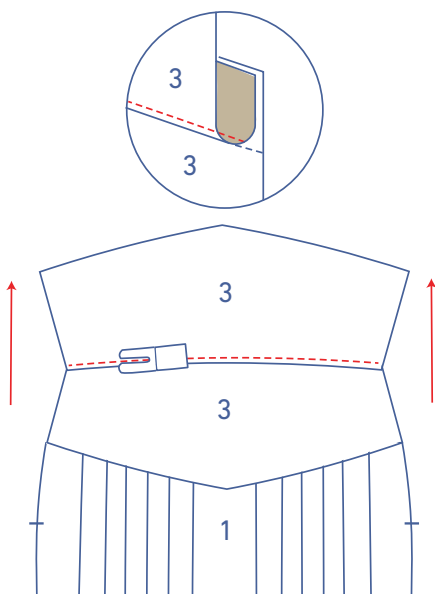




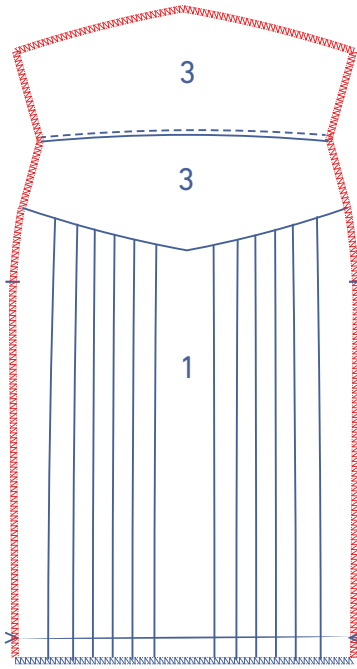
Press the seam allowance towards the yoke.



Pin and sew the top of the other yoke front to the top of the skirt, right sides together, with the notches matching.

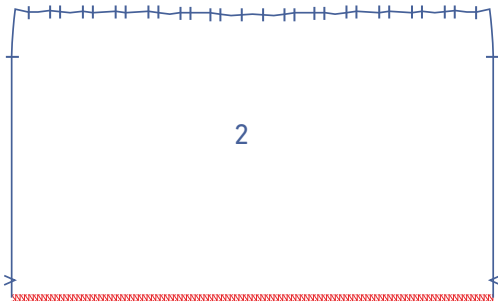


Fold over the yoke and sew to the seam allowance underneath, right next to the seam.

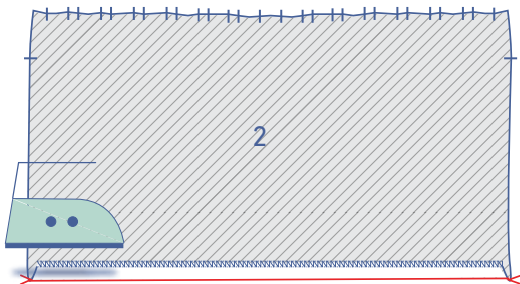


Finish the indicated sides with overlock stitching.

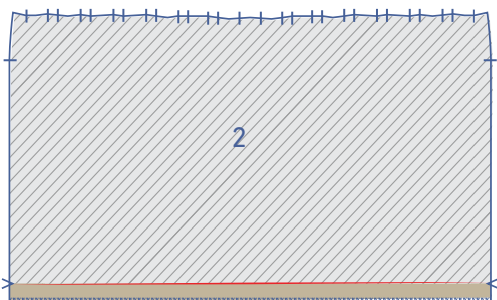
2

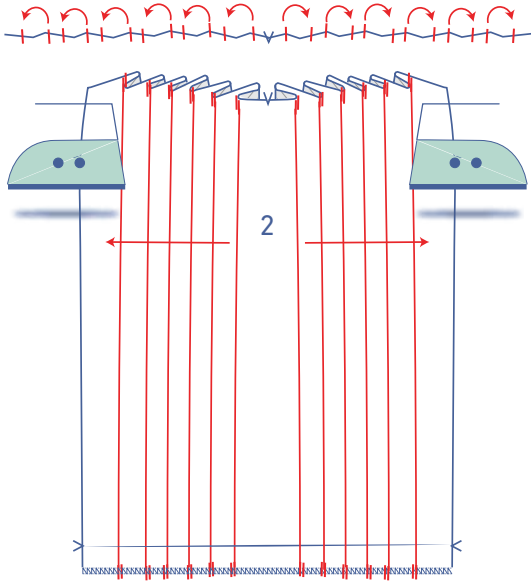


Finish the hemline of the back (2) with overlock stitching.

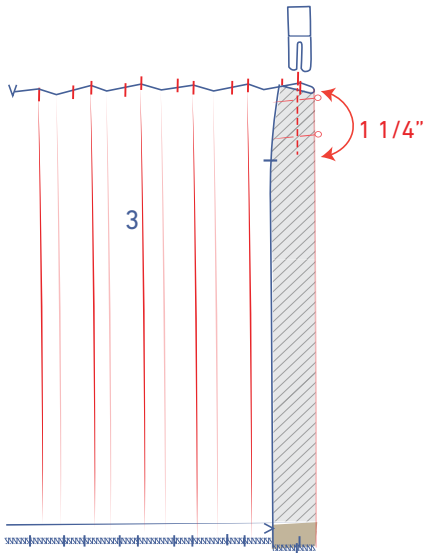


Press the hem allowance up at the V notches to create a fold line. Then open back out.

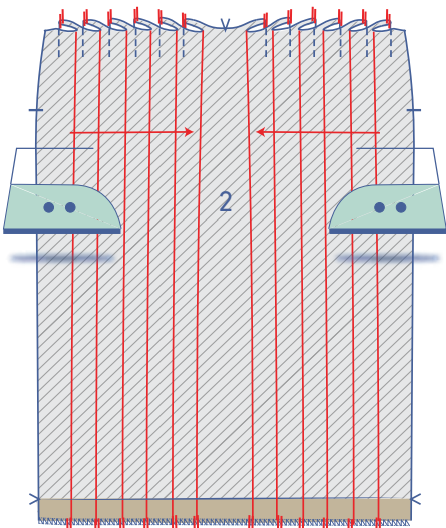




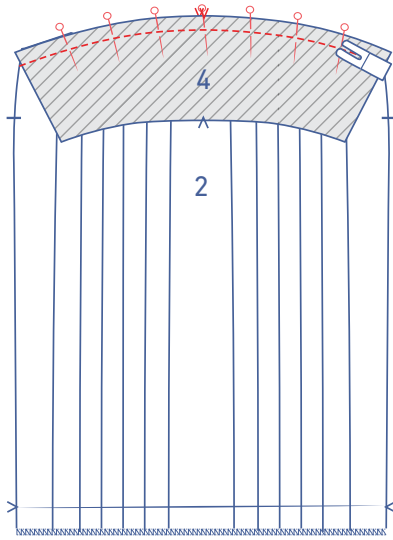
Match all notches at the top and bottom with the wrong sides of the fabric touching. Press the pleats into the fabric.



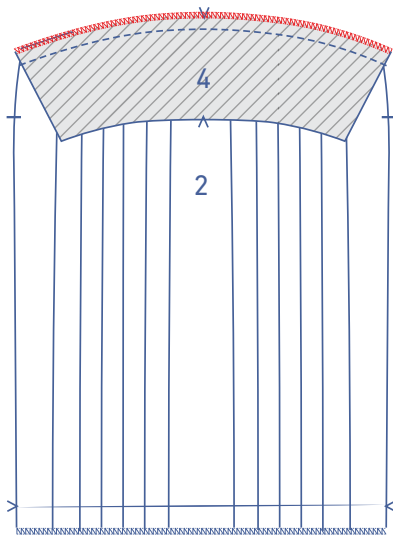
Sew 1 1/4" of vertical stitching at the top of each pleat.



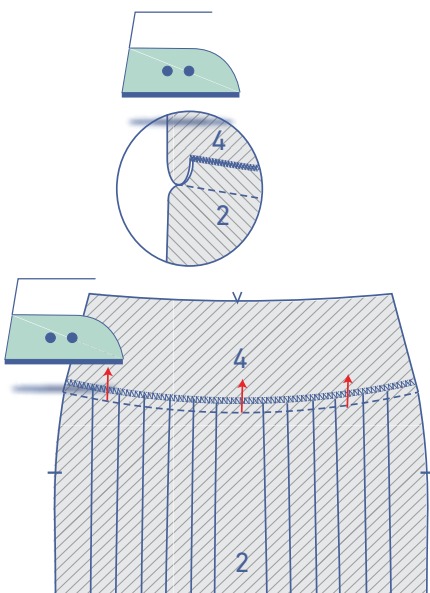
Turn the back over so that the wrong side is facing up. Press the pleat allowances in the direction indicated.



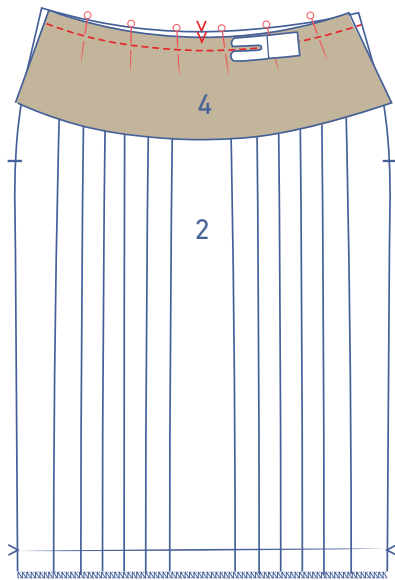
Turn the back over so the right side is facing up. Pin and sew the bottom of the yoke piece back (4) to the top of the back skirt with the markings matching.



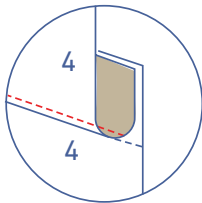
Finish the raw edges together with overlock stitching.



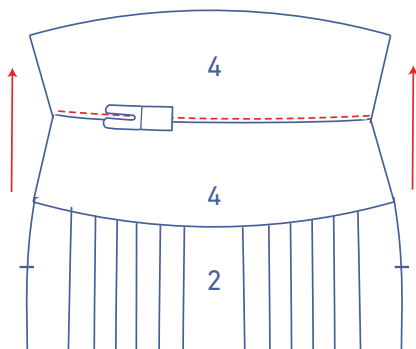
Press the seam allowance towards the yoke.



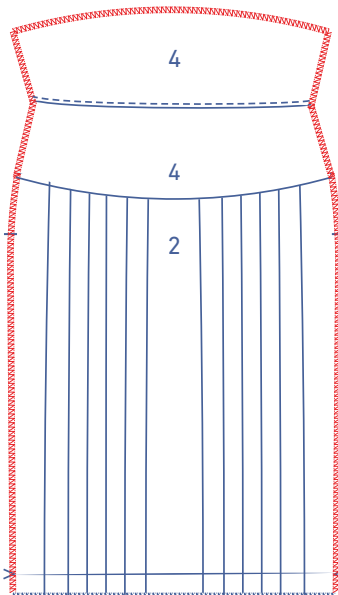
Pin and sew the top of the other yoke back to the top of the skirt, right sides together, with the notches matching.

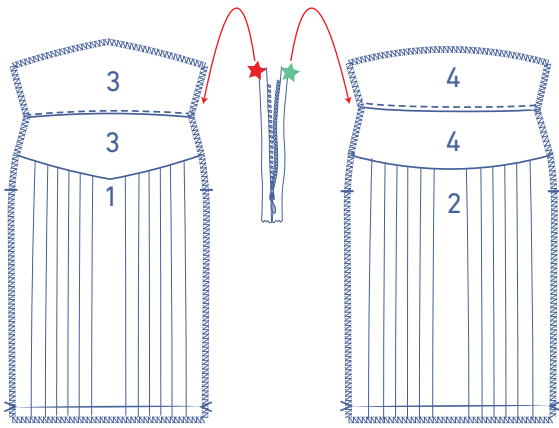


Fold over the yoke and sew to the seam allowance underneath, right next to the seam.



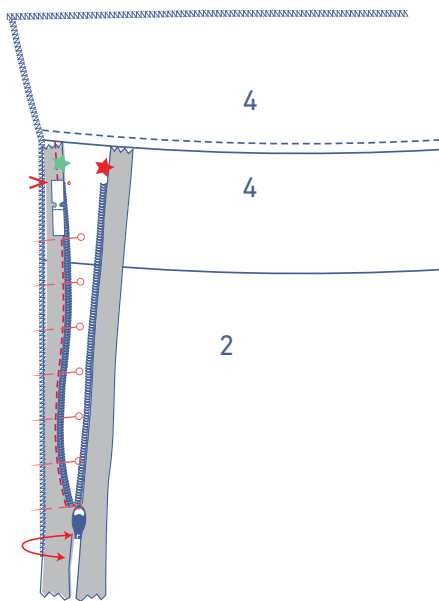
Finish the indicated sides with overlock stitching.



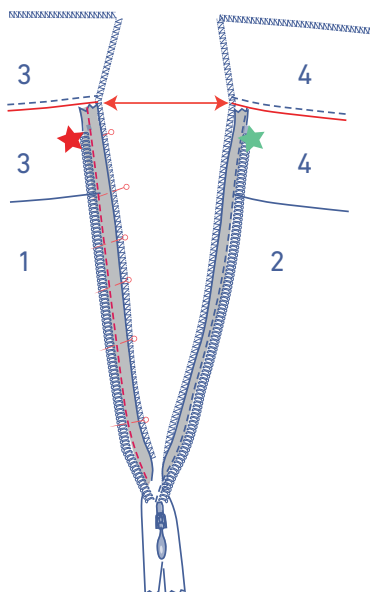


3

Place the front and back in front of you with the right sides facing up. Then place the invisible zip in front of you with the right side facing up and open the zip.

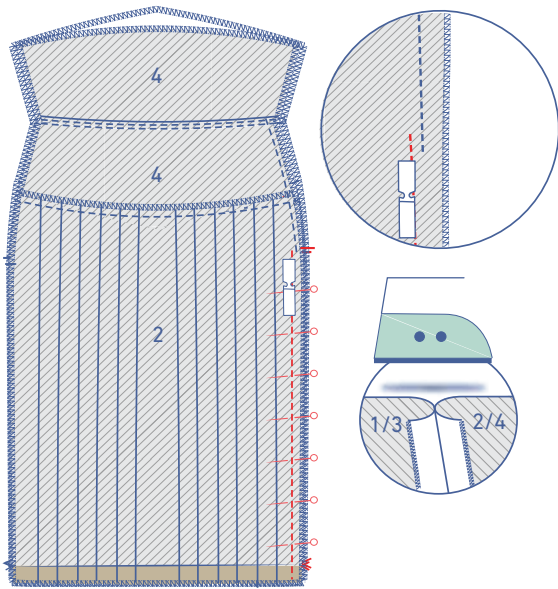


Fold the green star zip tape over to the right and pin to the side seam of the back, where indicated (i.e., the left side if you were wearing the skirt). The side of the zip tape should match the overlocked edge of the fabric. The top of the zip tape should line up with the seam (between both yoke pieces). Use the invisible zipper foot to sew as far as possible.

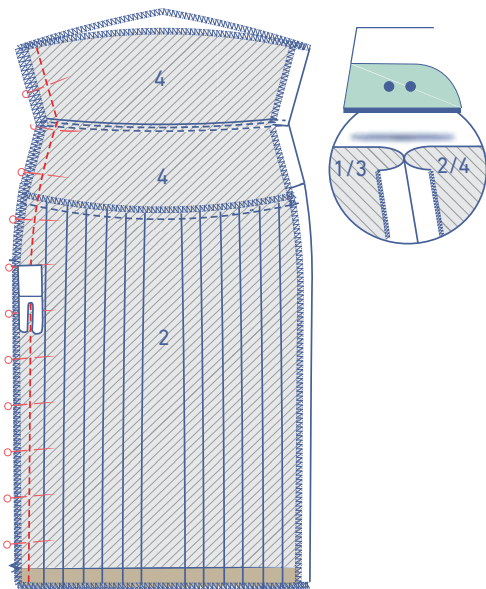


Now, fold the red star zip tape over to the left and pin it to the side seam of the front where indicated. The side of the zip tape should match the overlocked edge of the fabric. The top of the zip tape should line up with the seam (between both yoke pieces). Use the invisible zipper foot to sew as far as possible.

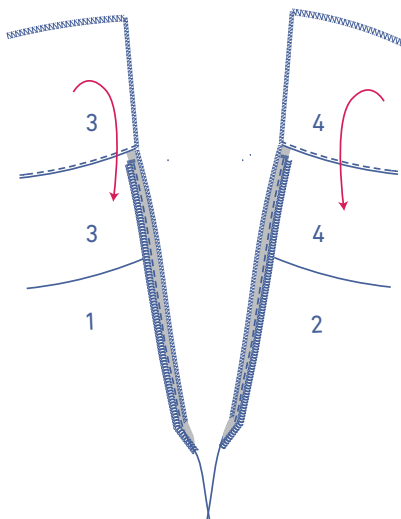
SMART SEWIST(A) TIP: Make sure that the yoke seams are level. How? First sew the green star zip tape. Close the zip and mark the location of the yoke's seam on the red star zip tape (the zip tape that hasn't been sewn yet). Open the zip and pin the red star zip tape to the front so that the marking matches the seam of the yoke. Sew into place.



Close the zip and pin the rest of the side seam below the zip. Sew into place with the narrow presser foot or the zipper foot. Always sew slightly past your previous stitching (zip tape stitching). Press the seam allowance open.

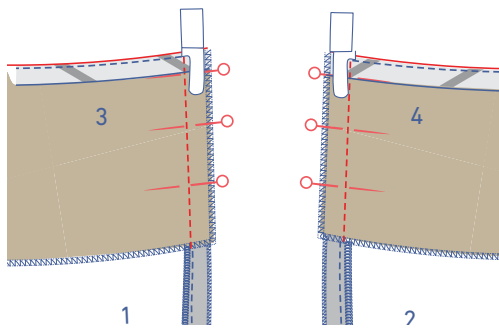


Pin and sew the other side seam and press the seam allowance open.

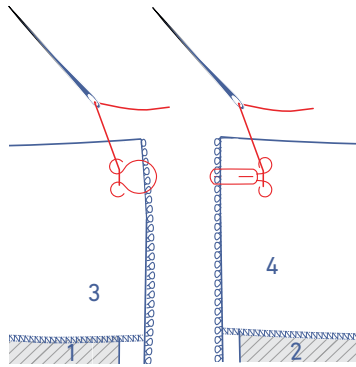


4

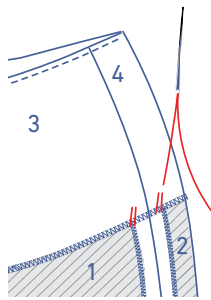
Fold the top pieces of the yoke over the right side of the garment, encasing the zip tape between two layers of fabric.



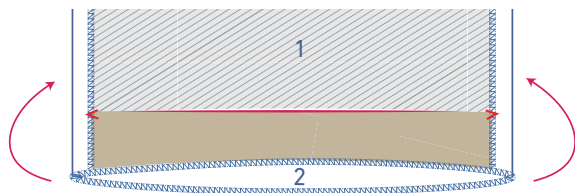
Sew each of the yoke's short ends together with the zipper foot.



Next, turn the yoke pieces back towards the wrong side and sew the hook and eye on by hand.

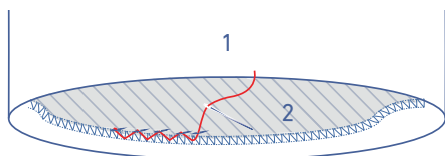


At the other side seam, hand stitch or sew the seam allowances of the yoke to those of the skirt.



5

Fold the hem allowance over.



Hand stitch or sew the hem allowance into place.

