

# Sienna by Fibre ood



# Sienna by Fibre Mood

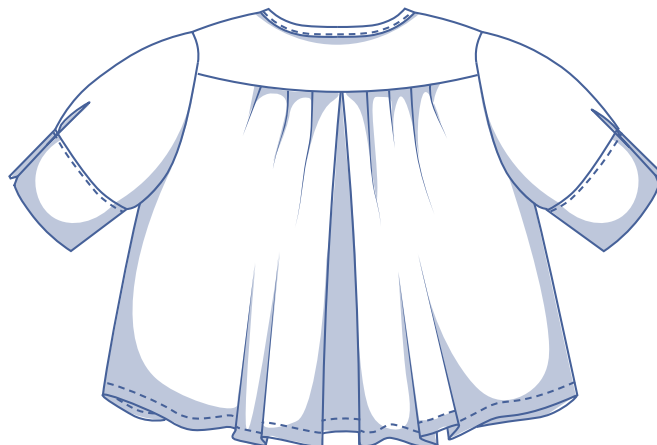
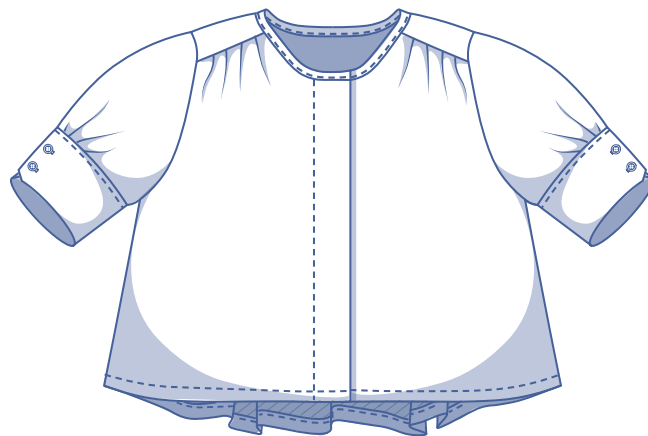


**XS - XXXL**

Seriously, what a darling! With its roomy yet elegant cut, deep pleat, and fabulous gathers – Sienna has got it all.

And don't forget the gently curved neckline, discreetly concealed buttons, and short sleeves with buttoned cuffs. Sienna was made to go with anything, whether with jeans, culottes, dress trousers, or a long straight skirt.

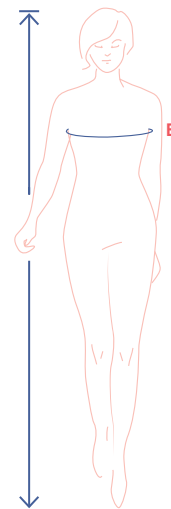
Style upgrade guaranteed.



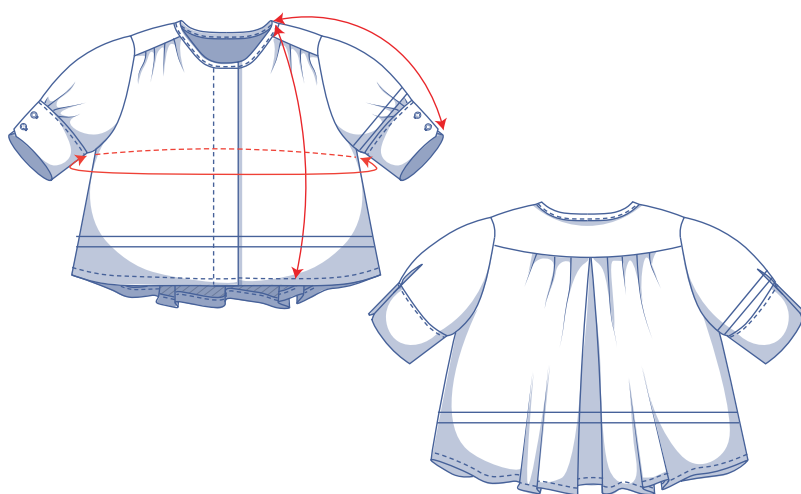
## size chart (in cm)

size	XS		S		M		L		XL		XXL		XXXL		
	4	6	8	10	12	14	16	18	20	22	24	26	28	30	32
body height	160	164	166	167	168	169	170	171	172	172	172	172	172	172	172
B (bust)	76	80	84	88	92	96	100	104	110	116	122	128	134	140	146

Choose your size based on your **bust measurement**. Pick the size that is the best match for your bust.



## pattern measurements (in cm)



— shorten or lengthen the pattern here

This chart's measurements are the pattern measurements based on the fabric type and serve as a reference. Ease has been added to the width measurements (in addition to the exact body measurements) for a more comfortable fit. Sienna is designed to have a **loose cut**.

Depending on the preferred cut, you could decide to go a size smaller or larger than the recommended size.

size	XS	S	M	L	XL	XXL	XXXL
length	52.75	54.5	56.25	58	60.5	62.75	65
sleeve length*	39.5	40.75	42	43	43.75	45.5	47.25
bust	128.5	137.75	146.75	156	167.25	180.75	194

\* Including shoulder length and cuff.

Compare the stated lengths to the measured or desired lengths. **Lengthen** or **shorten** the top and/or the sleeves by cutting the pattern pieces at the indicated double lines. Then either increase the distance between the cut pieces by the desired amount (to lengthen) or overlap the pieces (to shorten). Make sure that the CF and CB lines and the side seams are always straight.



### IMPORTANT

Adjust the amount of fabric to be used based on these alterations.

## notions



- Thread
- Iron-on interfacing: max. 60 cm
- Buttons (Ø 1.1 cm): see table
- Fabric: see table

buttons	XS	S	M	L	XL	XXL	XXXL
	10	10	10	10	11	11	11

fabric		XS	S	M	L	XL	XXL	XXXL
fabric width 110 cm	cm	180	190	200	235	260	310	320
fabric width 140 cm	cm	150	160	170	180	190	205	215

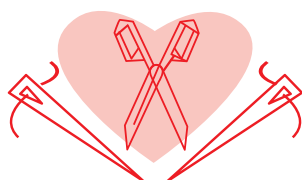
The corresponding fabric layout can be found on page 6 of these sewing instructions.

## fabric advice



Sienna looks a treat in all kinds of woven fabrics from fluid drape to structured and somewhat heavier fabrics. Whether you go fluid or structured depends on the look you hope to achieve. Poplin, leather(ette) and chambray are some structured options. If you'd like Sienna in something drapier, go for silk (satin), lyocell, crepe, double gauze, etc. Sienna finest features shine brightest in a solid fabric or a delicate print like pinstripes.

# Proud to be #Sewista



## pattern pieces & seam allowances (in cm)



To sew the garment as described in the instructions, draw the illustrated seam allowances around the paper pattern pieces before cutting them out. If you are using a PDF pattern, the pattern can be printed with or without seam allowance.

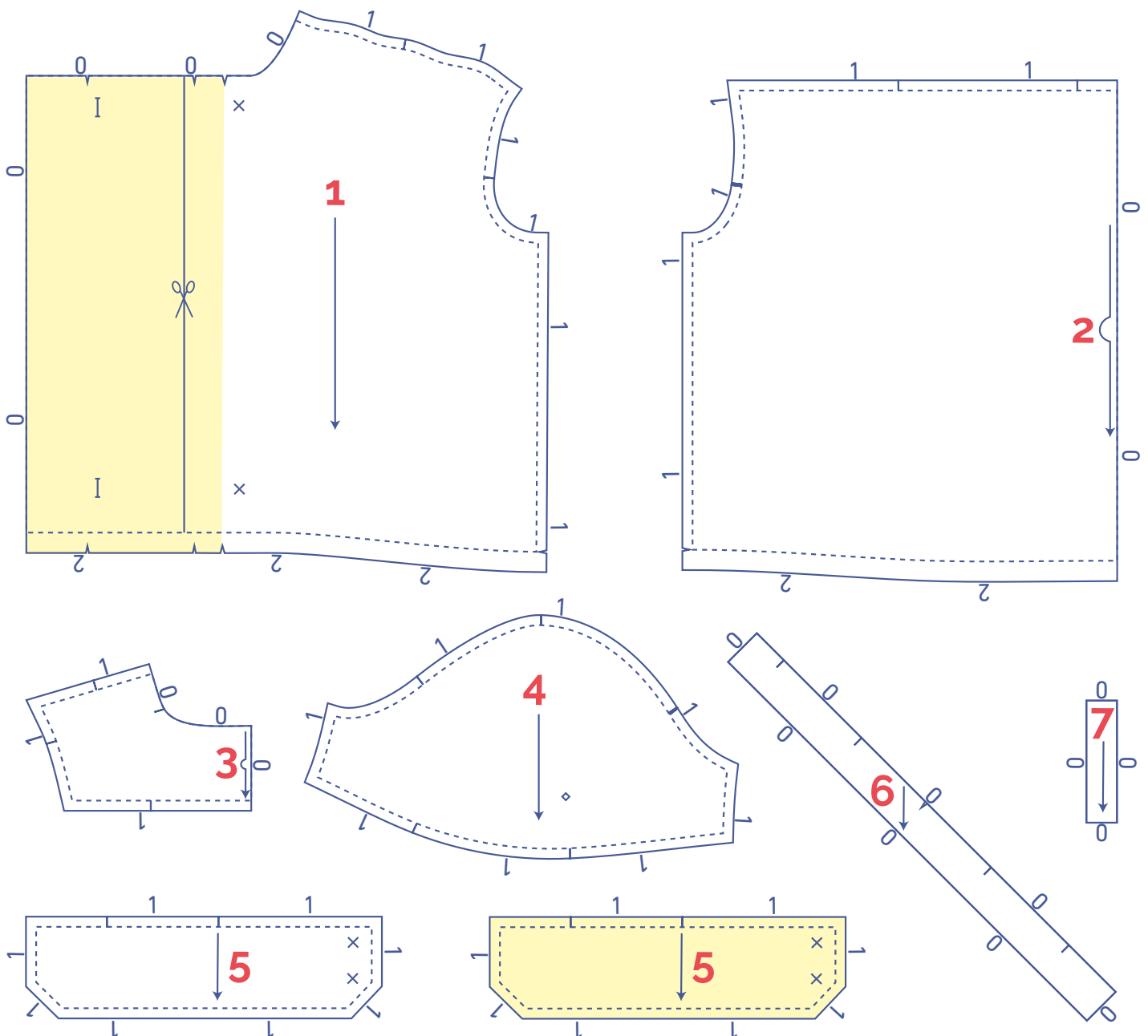
To find out more, watch the [video](#).

1. front: 2x
2. back: 1x on fabric fold
3. yoke: 2x on fabric fold
4. sleeve: 2x
5. cuff: 4x (interface 2 of them)
6. bias tape: 1x
7. sleeve binding: 2x

**IMPORTANT**

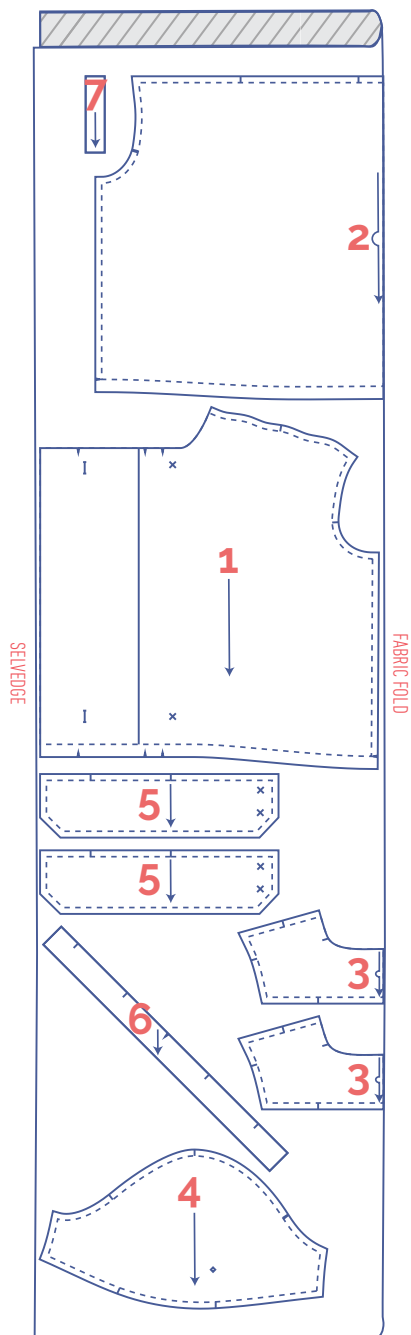
The pieces highlighted in light yellow have iron-on interfacing attached to the wrong side.

?	material type
	fabric
	iron-on interfacing



**fabric layout – solid fabrics**  
**fabric width 110 cm**

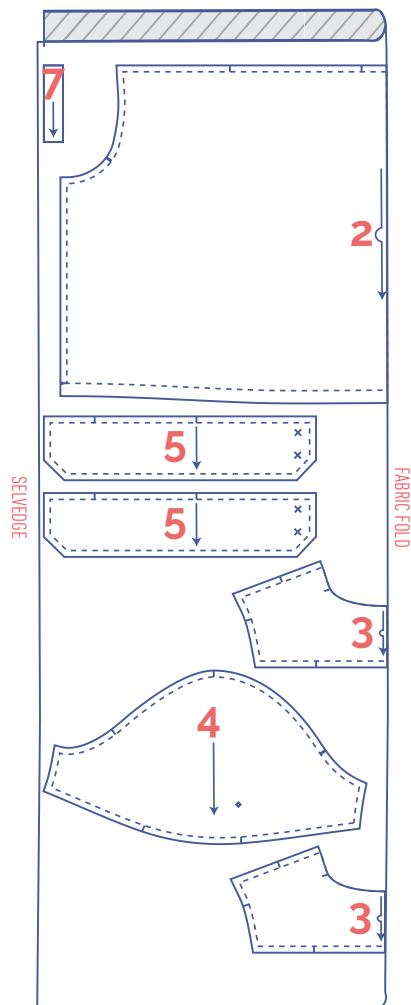
XS - M



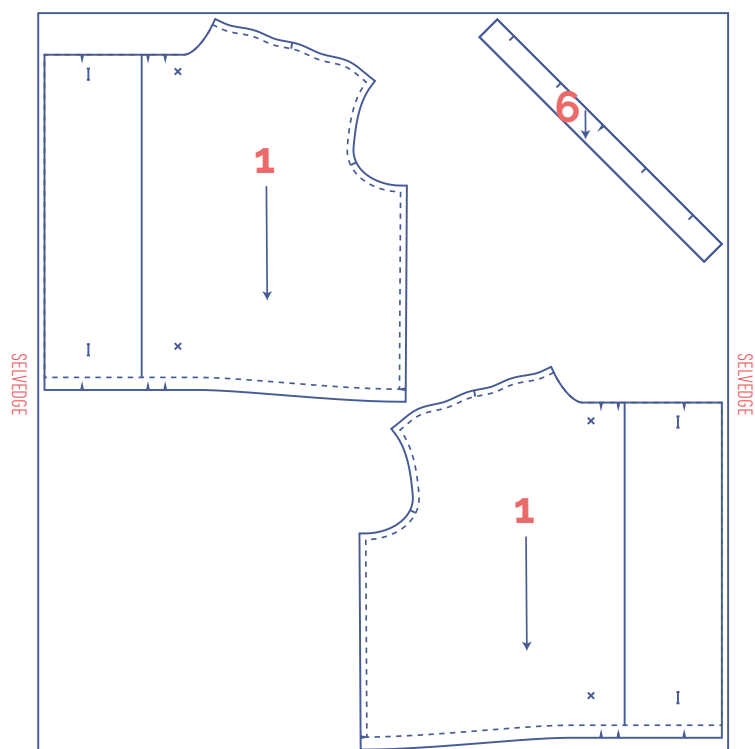
**IMPORTANT**

You only need pattern piece 6 once.

L - XL

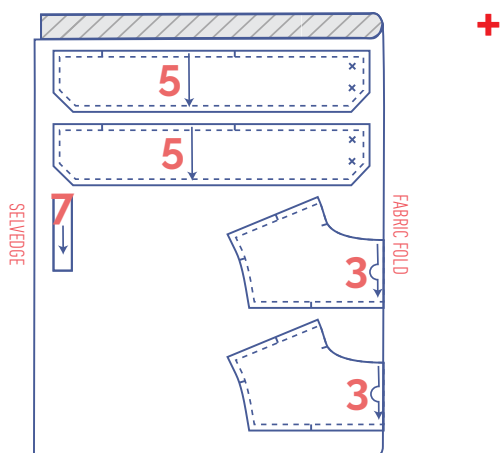


+



**IMPORTANT**

Because the fabric is opened out and single layer, be sure to cut mirror images of pattern piece 1 so you have a left front and right front.



### IMPORTANT

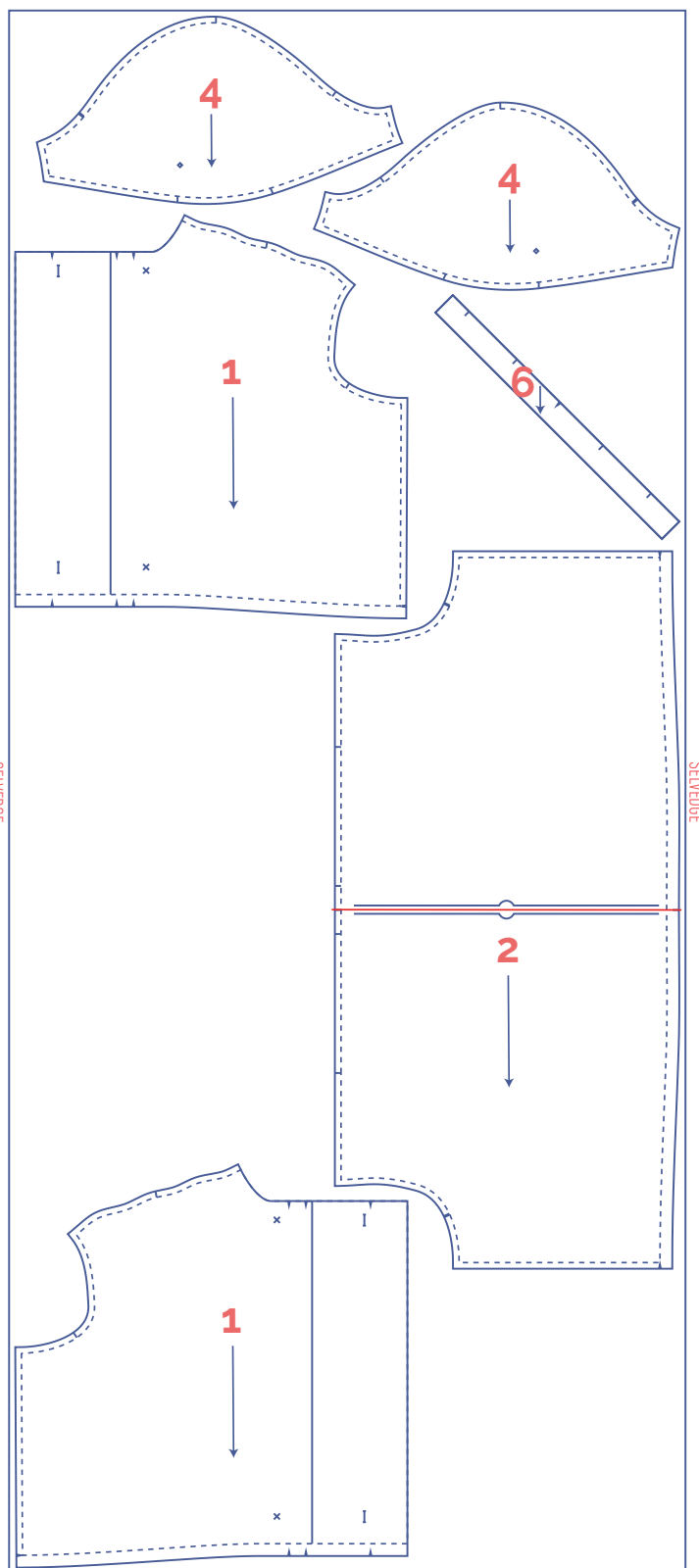
Because the fabric is opened out and single layer, be sure to cut mirror images of pattern pieces 1 and 4.

Pattern piece 2 has been rotated at a 90° angle because it is too wide to fit the fabric. If you are working with a directional print or napped fabric and want everything to go in the same direction, you will need extra fabric. Then instead of cutting pattern piece 2 on the fold, cut 2 mirror images and sew them together. Be sure to add 1cm seam allowance to the CB before you cut.

## marking pattern pieces

	Notch the pattern paper and fabric at the following points
	single notch
	double notch
V	V notch

	Mark the following points with marking thread
	centre point
	snap fastener
	buttonhole

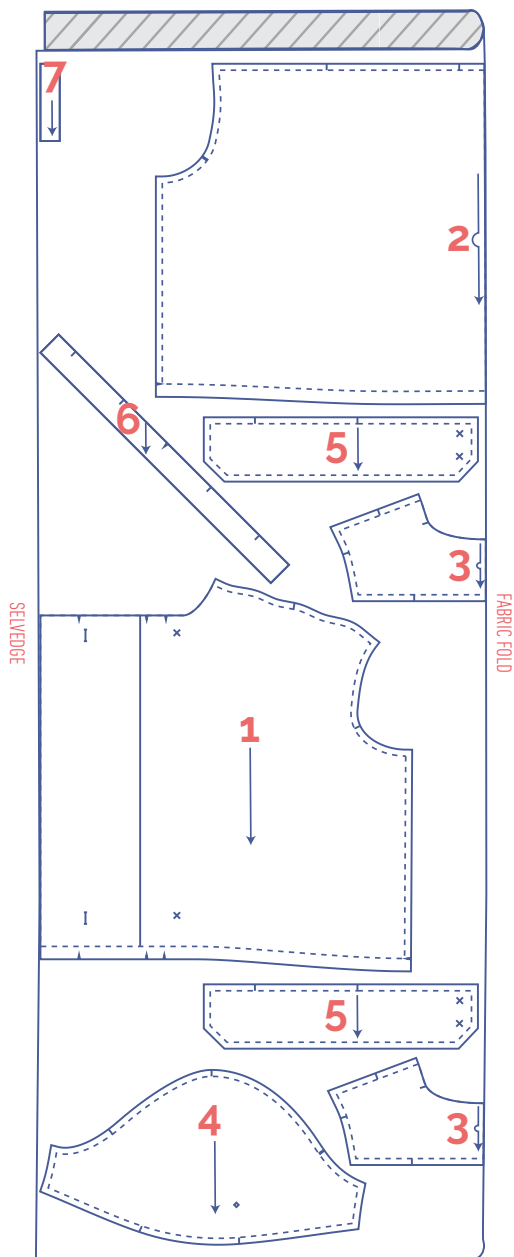


## fabric layout – solid fabrics

### fabric width 140 cm

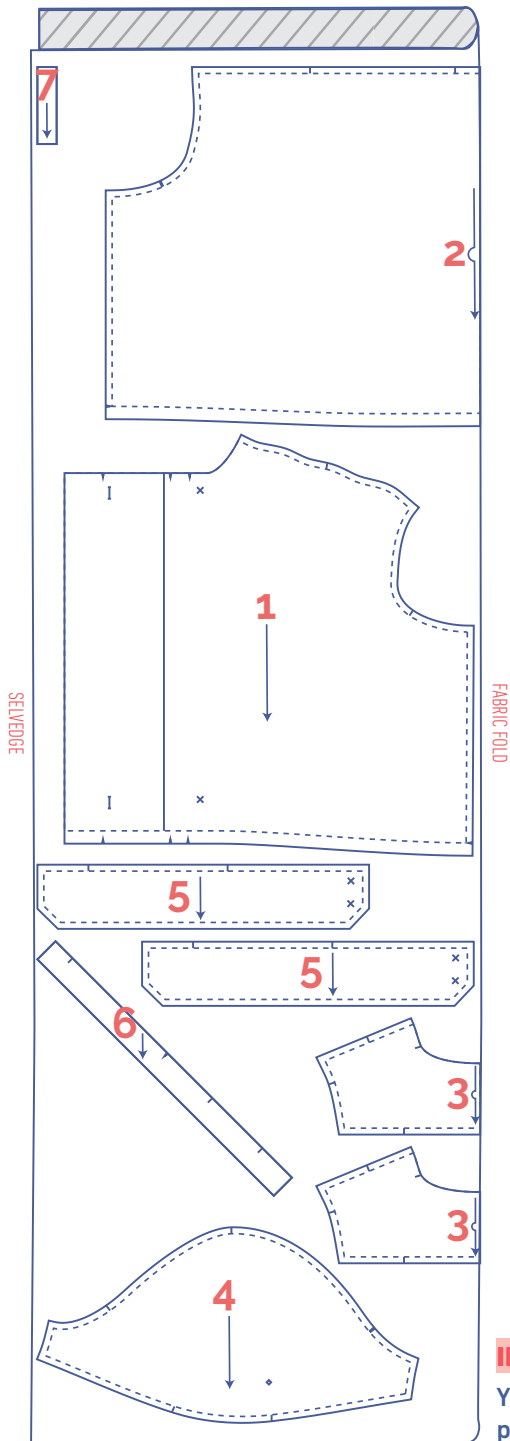
XS - XL

XXL - XXXL



#### IMPORTANT






You only need pattern piece 6 once.



#### IMPORTANT

You only need pattern piece 6 once.

## marking pattern pieces

 <p>Notch the pattern paper and fabric at the following points</p>	 <p>Mark the following points with marking thread:</p>
<p>I single notch</p>	<p> centre point</p>
<p>II double notch</p>	<p> snap/button</p>
<p>V V notch</p>	<p> buttonhole</p>



# sewing instructions



The method used to finish the seams depends on the fabric used.  
The pieces are always sewn together with the right sides of the fabric facing, unless stated otherwise.

FP front

B back

CF centre front

CB centre back

LF left front

RF right front



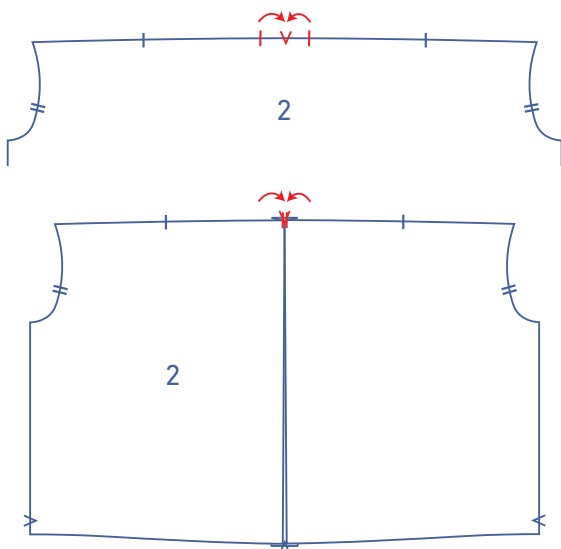
right side



wrong side

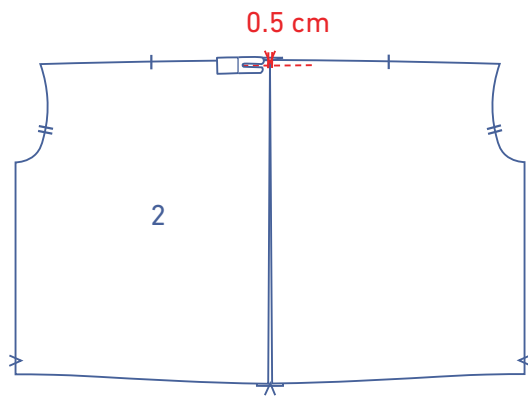


iron-on interfacing



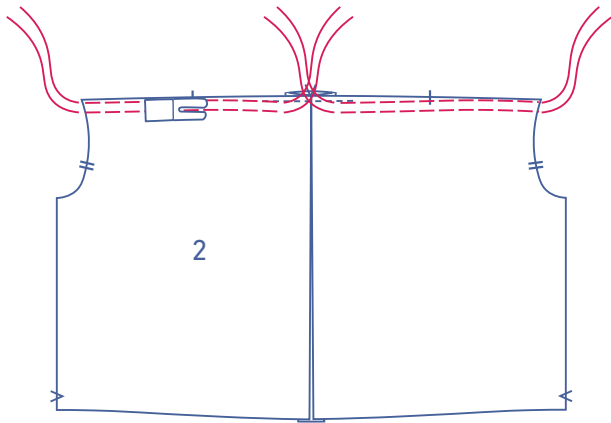
**1**

Fold the back piece (2) so the highlighted single notches at the top meet the V notch in the CB with the right sides of the fabric touching.

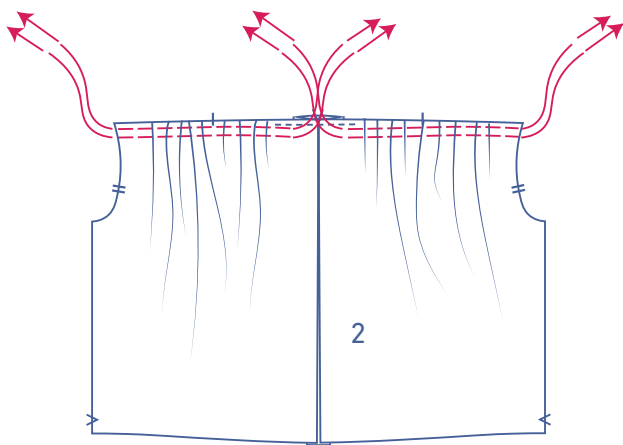


0.5 cm

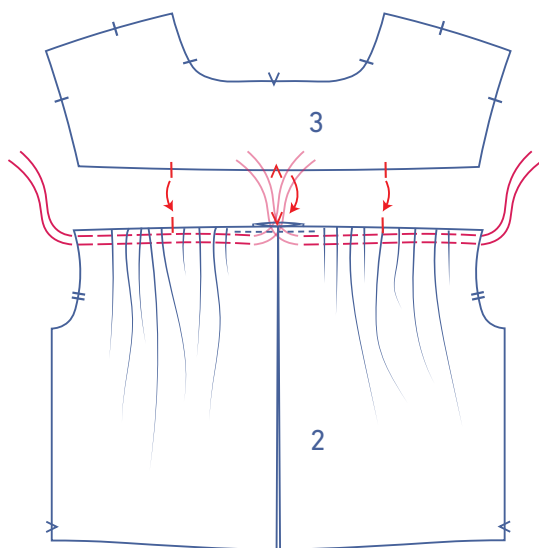
Stitch the pleat into place at 0.5 cm from the raw edge.



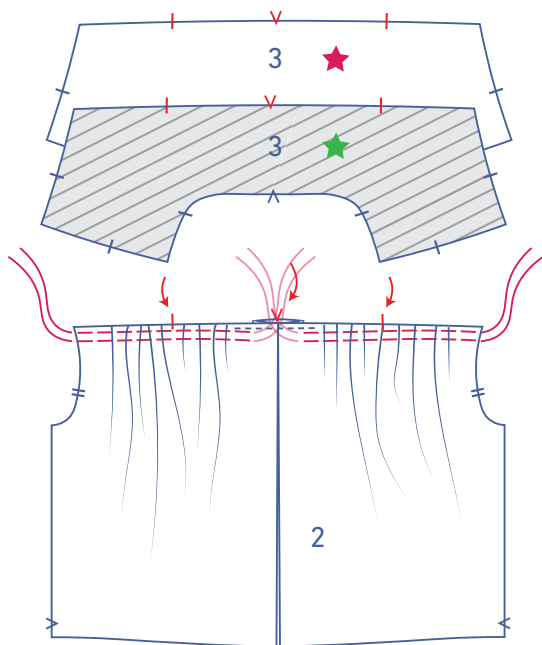
Sew two parallel lines of stitching set at a long stitch length and a low thread tension at the top of the back, stopping just before the pleat. Leave a length of thread at the beginning and end of your stitching.



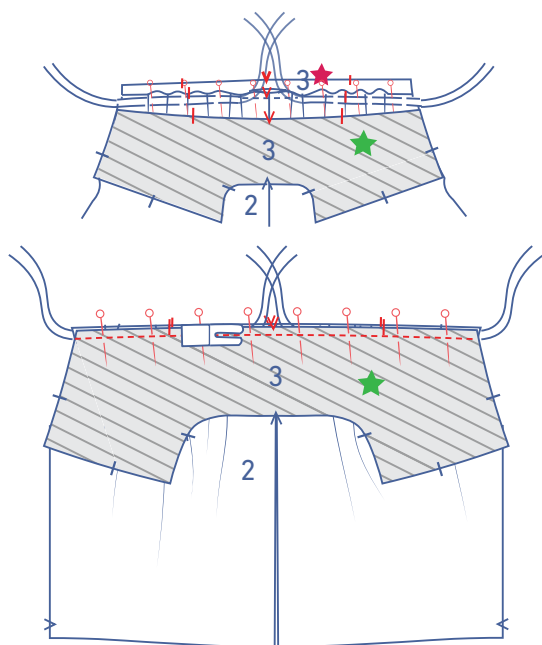
Gently tug the ends of the threads to gather the fabric.



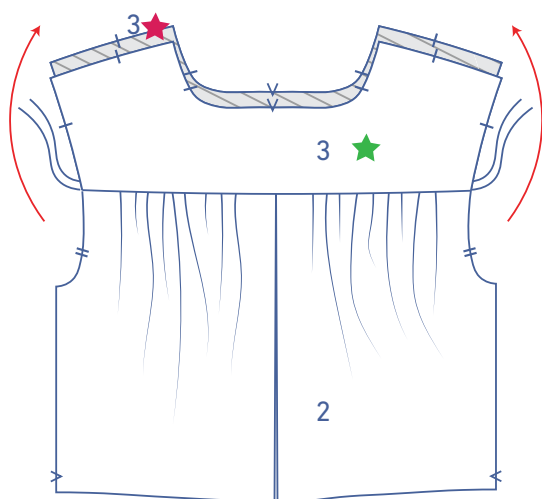
Distribute the gathers so that the notches in the back match those in the yoke (3).



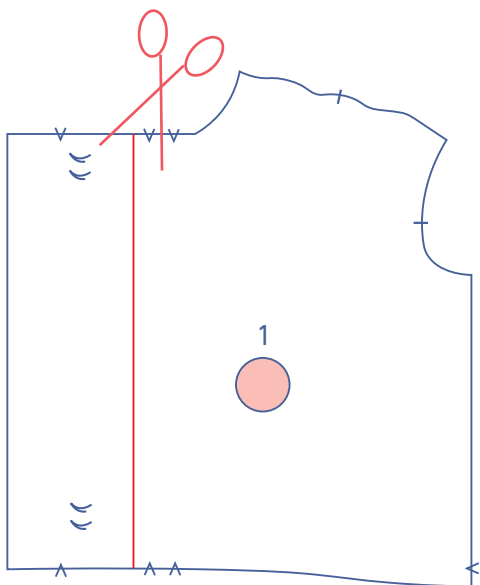
Stack both yoke pieces together with the right sides facing and the straight ends matching. Now, sandwich the back between the yokes with the right side of the back facing up. The yoke intended to be visible on the outside of the top is marked with a green star, while the yoke intended for the inside of the top is marked with a red star.



Pin and sew into place.

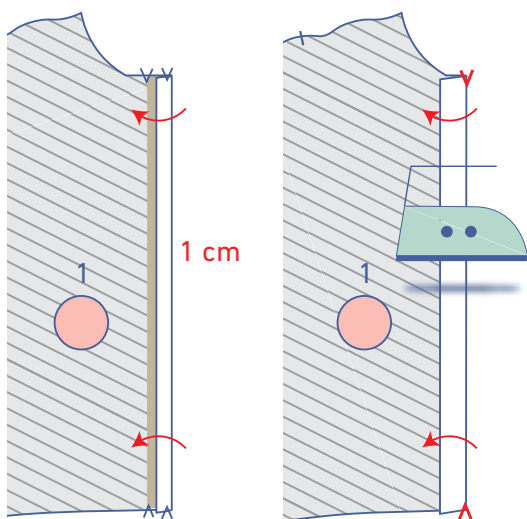


Open both yoke pieces back out. The back should be neatly positioned between the two pieces.

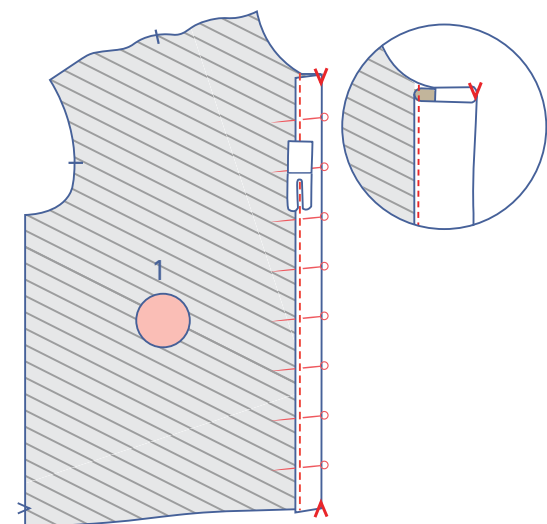


**2**

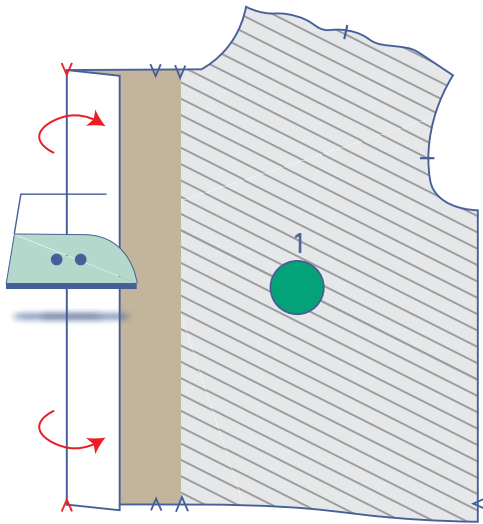
Cut a strip from the LF (1) along the indicated line.



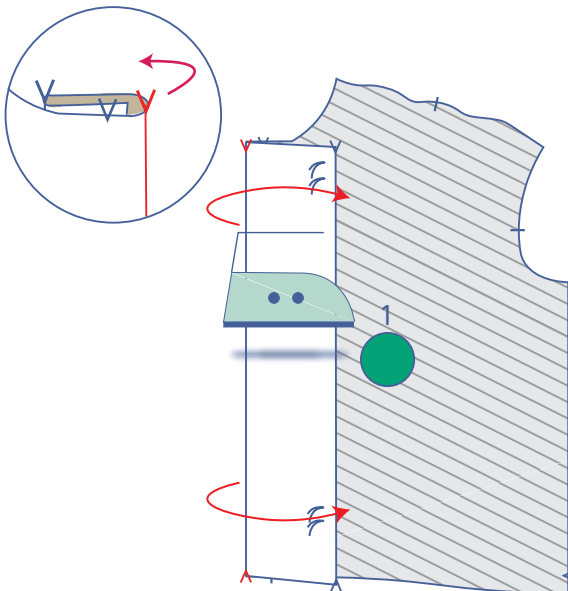
First, press 1 cm of the LF piece at the CF over towards the wrong side. Then, press again, this time at the indicated V-notches at the top and bottom.



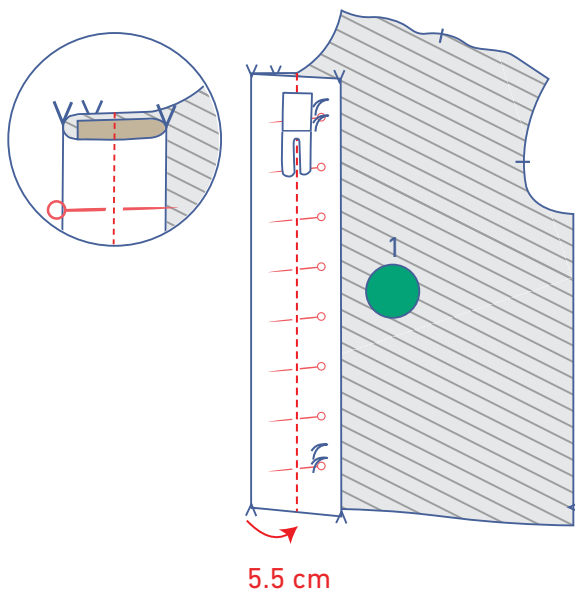
Edgestitch into place.



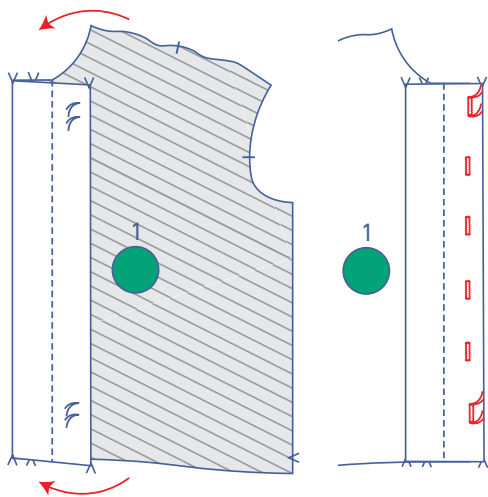
Press the RF over at the outermost top and bottom V notches.



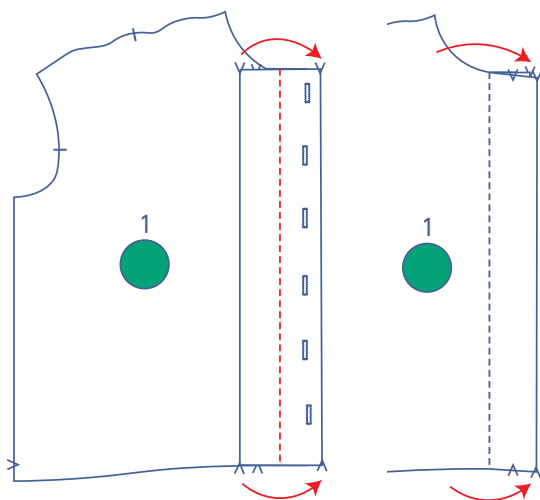
Press over again at the next V notch (see diagram).



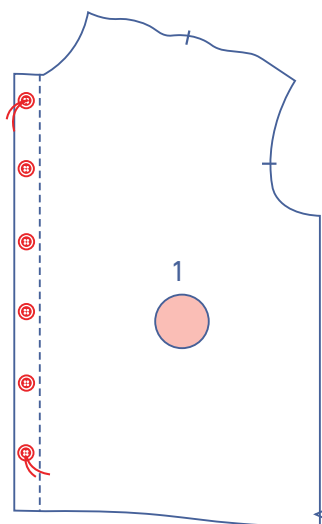
Sew through all layers of fabric at 5.5 cm from the edge .  
You have now made the buttonhole placket.



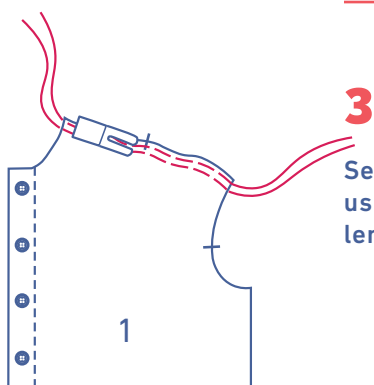
Turn the RF over. Make the buttonholes on the right half of the buttonhole placket. The top and bottom buttonholes have been marked on the pattern for you. Distribute the remaining buttonholes evenly between the top and bottom buttonholes.



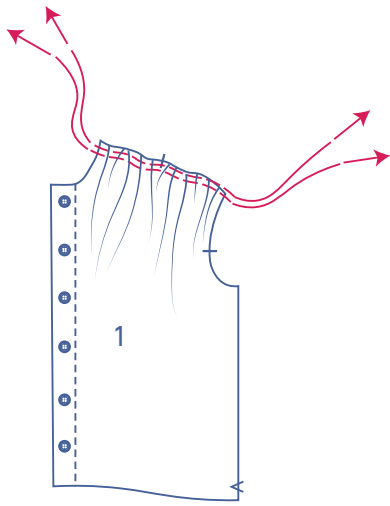
Fold the buttonhole placket in half along the stitching.



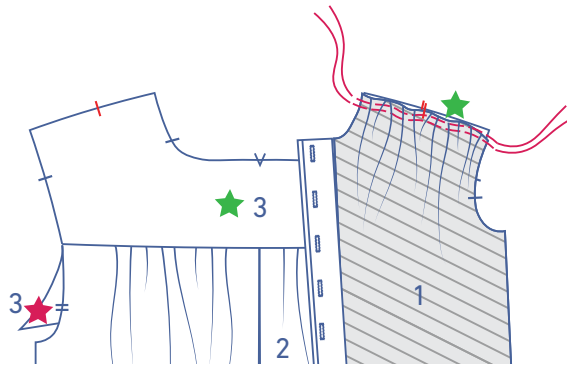
Sew the buttons to the LF where indicated to match the buttonholes.



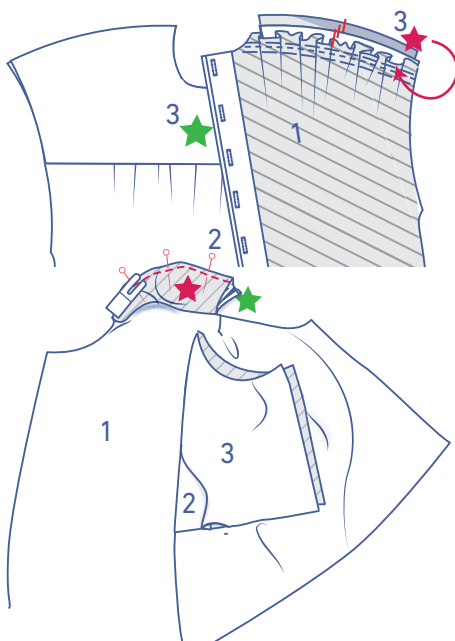
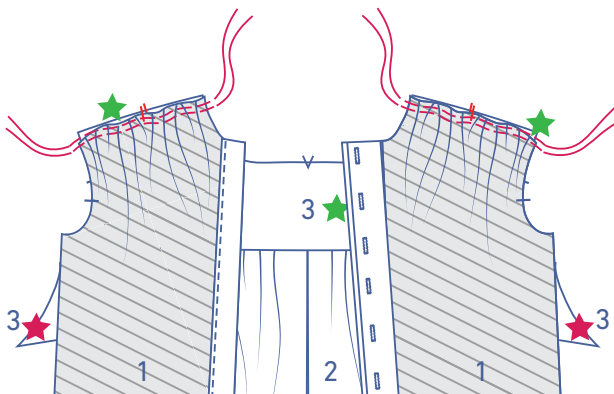
Sew two parallel lines of stitching at the top of the front, using a long stitch length at a low thread tension. Leave a length of thread at the beginning and end of your stitching.



Gently tug the ends of the threads to gather the fabric.

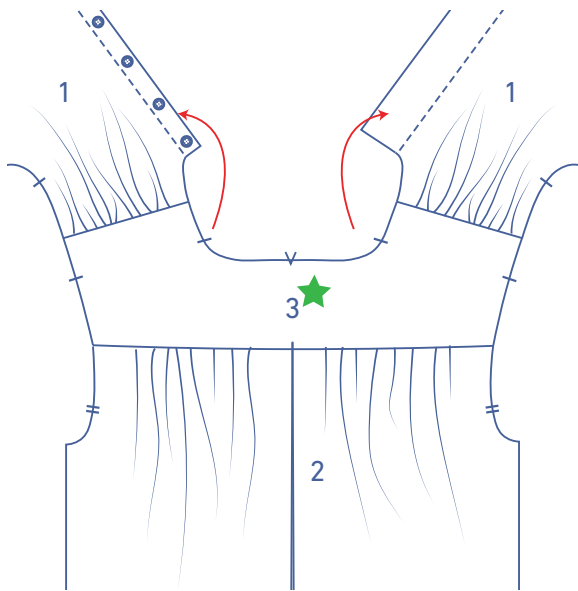


Match the shoulder edge of the front and green-star yoke with the right sides facing each other. Distribute the gathers in the front so that the notches in the match the notches in the yoke. Pin into place.

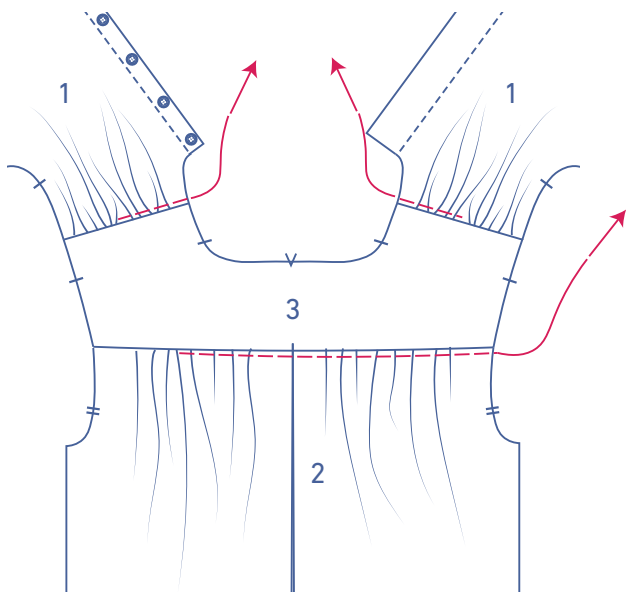


Now, take the shoulder edge of the red-star yoke and fold this to the front with the right side facing down onto the wrong side of the front.

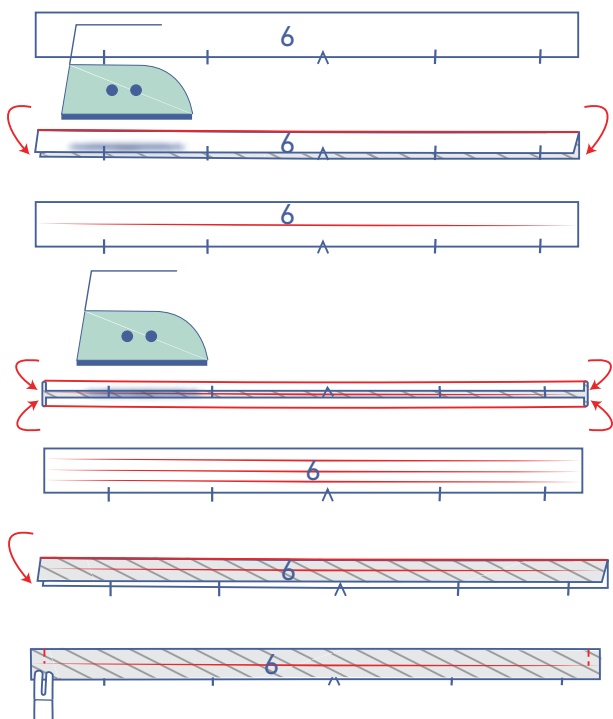
Neatly match the 3 raw edges and stitch the layers together.



Open the right way out again. The front is now neatly sandwiched between the yoke pieces.



Remove the gathering threads.



**4**

Fold the bias tape (6) in half with the long ends together and the wrong sides of the fabric facing.

Open back out.

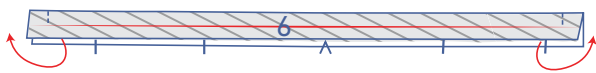
Press long raw edges in to meet the pressed centre line.

Open back out.

Fold the bias tape in half along the pressed center fold line so that the right sides of the fabric are facing each other.

Stitch the short end from the pressed centre line to the other pressed fold line.





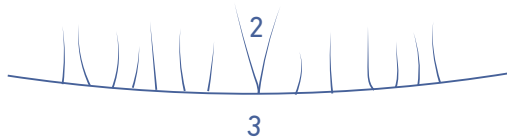
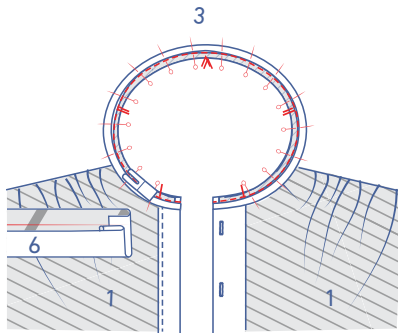
Turn the right way out so that the wrong sides are facing.



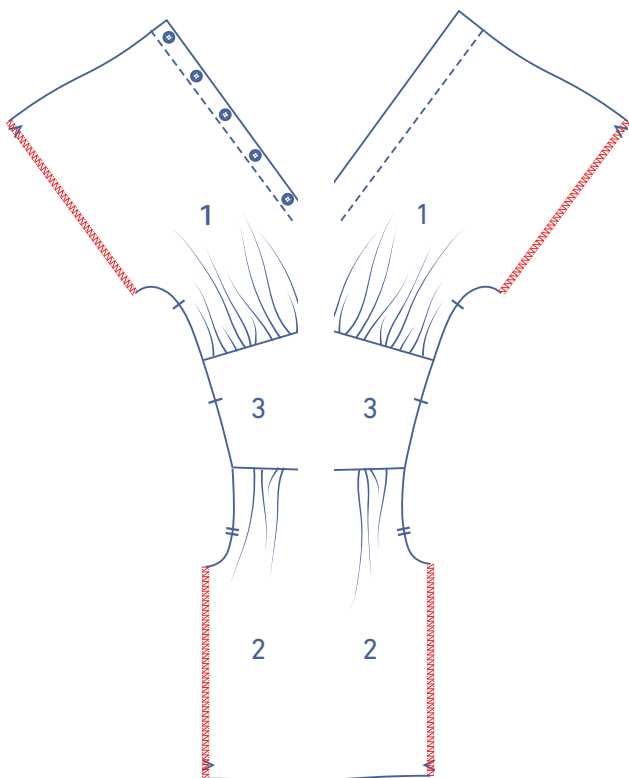
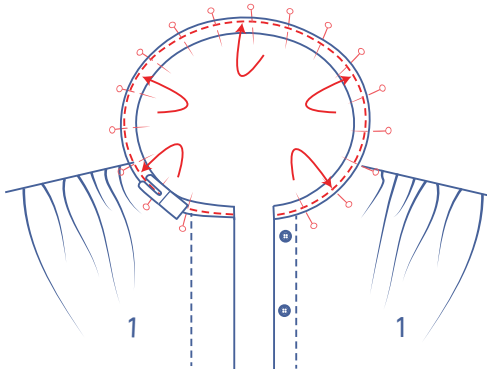
Fold the long unnotched edge in along the pressed fold line.



Pin the (unfolded) raw edge of the bias tape to the wrong side of the neckline with the notches matching. Sew into place.

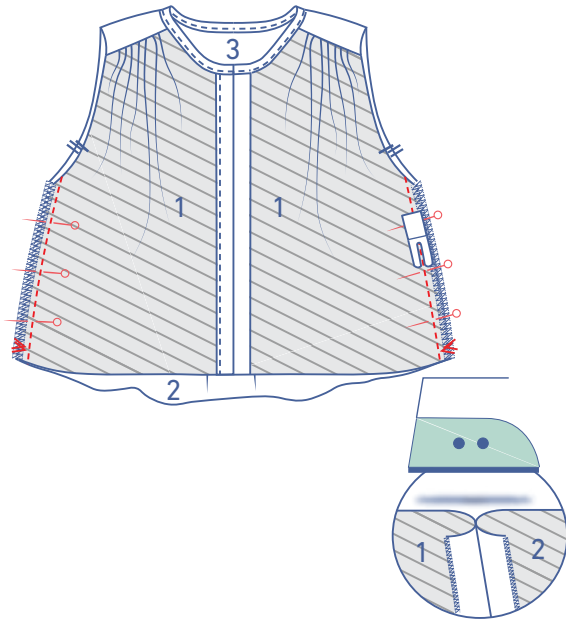


Fold the bias tape towards the right side and pressed edge to the previous stitching. Edgestitch into place.

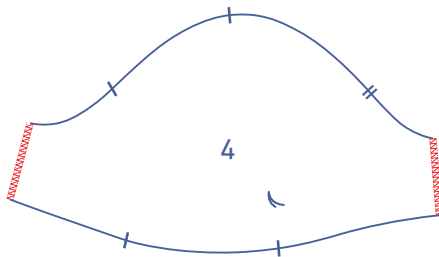


## 5

Finish the sides of the front and back with overlock stitching.

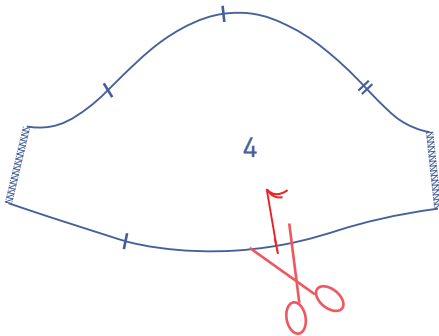


Pin and sew the side seams together. Press the seam allowance open.

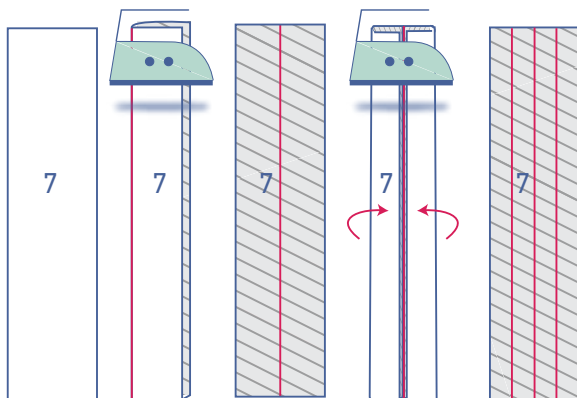


## 6

Finish the sleeve sides (4) with overlock stitching.

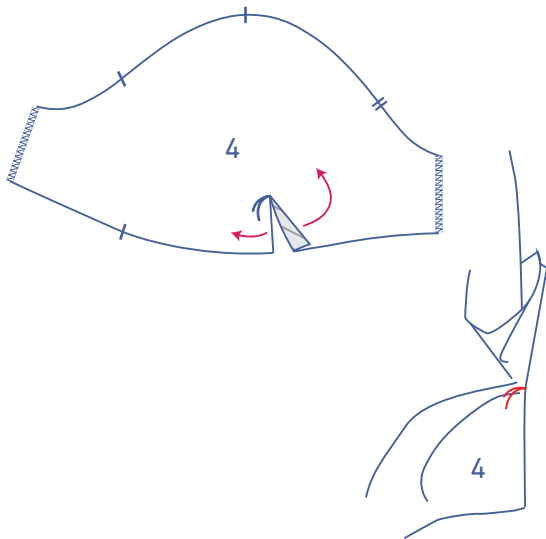


Snip into the sleeve from the notch in the hem up to the marking thread.

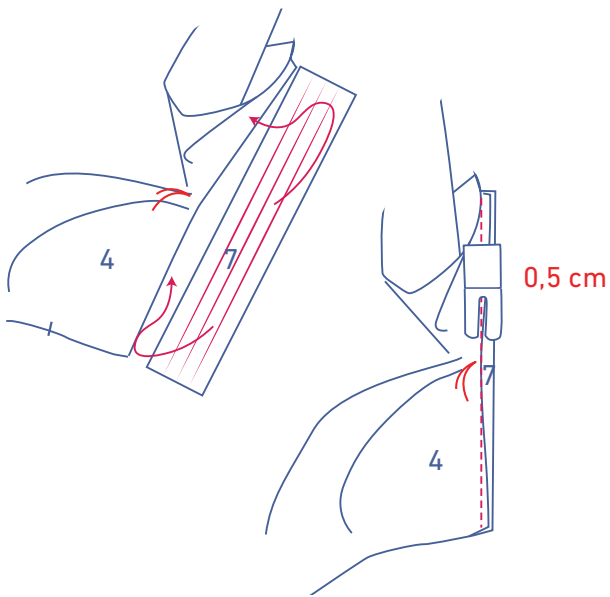


Press the sleeve binding (7) as follows:

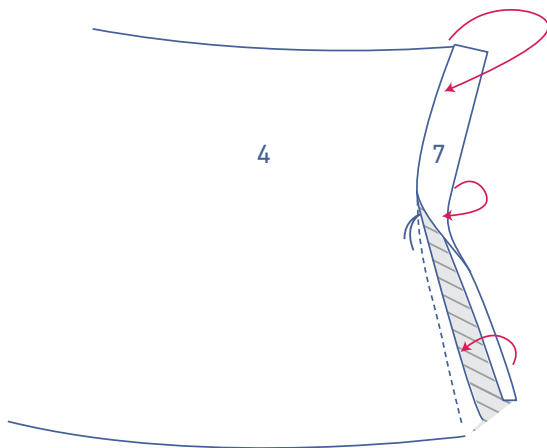
- First, press the sleeve binding in half with the long ends touching and the wrong sides of the fabric facing to create a fold line down the middle.
- Open back out.
- Next, press the long ends so the raw edges meet the center fold line.
- Open the sleeve binding back out.



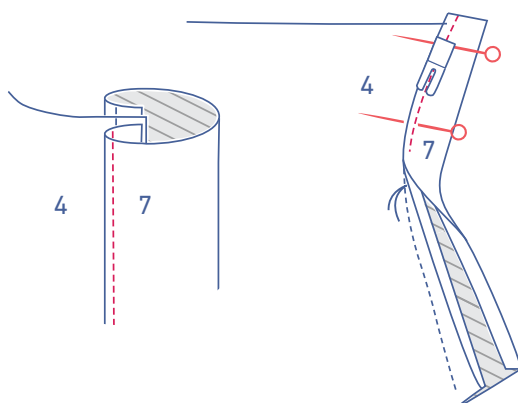
Open the sleeve split so that you end up with a single straight line.



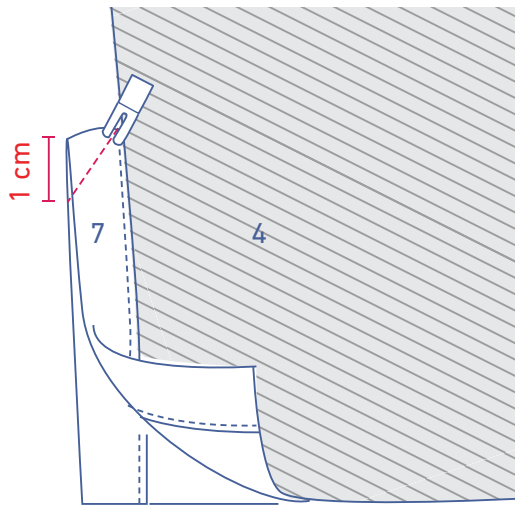
Slide the sleeve binding under the sleeve with the right side facing up. Match one long end to the end of the sleeve split and pull the sleeve a little to the side at the marking thread. Sew into place at 0.5 cm. There should only be a few stitches at the marking thread.



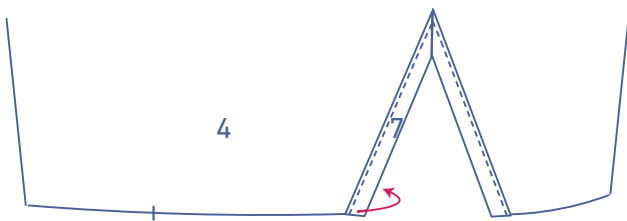
Turn the sleeve binding over towards the right side of the sleeve and tuck the raw edge under. Then place the pressed fold line directly over the stitching.



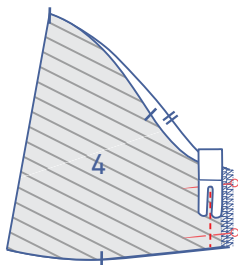
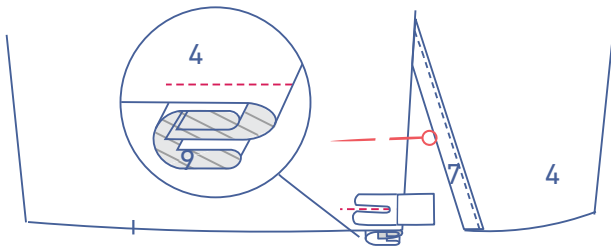
Edgestitch into place.



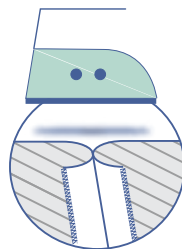
Fold the sleeve in half crosswise with the right sides facing each other. Stitch the top of the sleeve binding together at an angle.



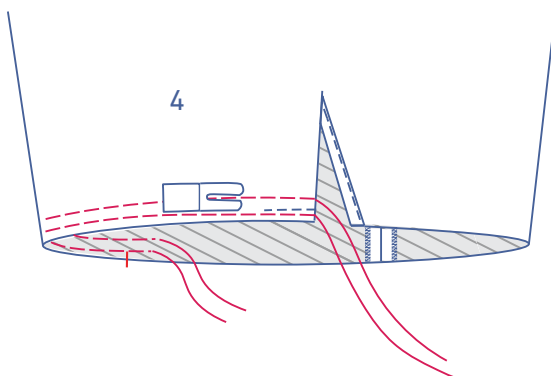
Fold the sleeve binding at the front of the sleeve (marked with a single notch) all the way over to the wrong side of the sleeve. Sew the sleeve binding into place at presser foot width from the bottom.



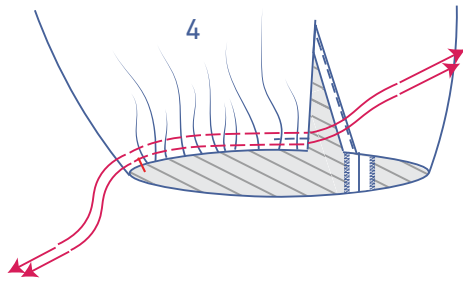
Pin and sew the sides of the sleeve.



Press the seam allowances open.



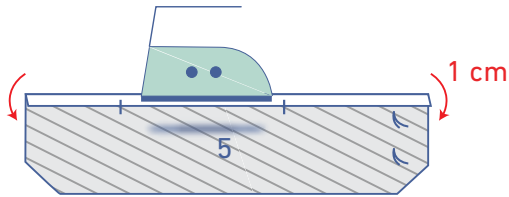
Sew two parallel lines of stitching along the bottom of the sleeve from the slit to just past the single notch, using a long stitch length at a low thread tension. Leave a length of thread at the beginning and end of your stitching.



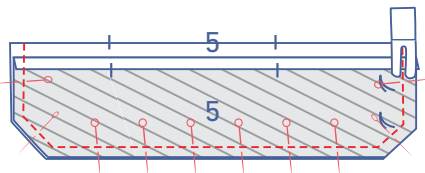
Gently tug the ends of the threads to gather the fabric.



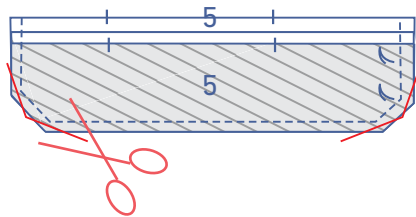
**7**



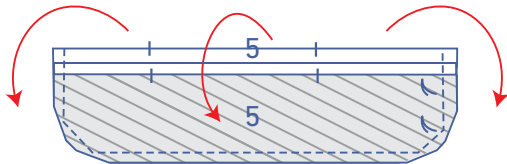
Press 1 cm of the top end of the uninterfaced cuff (5) towards the wrong side.



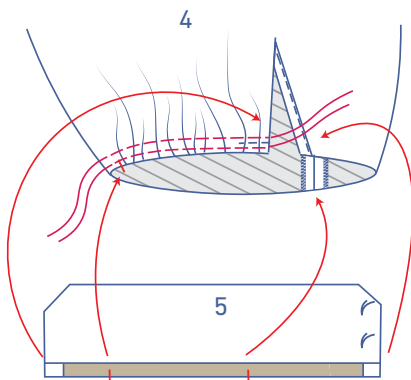
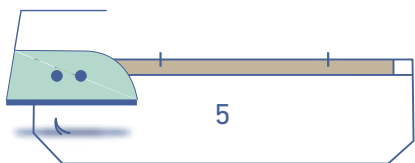
Place the uninterfaced cuff on top of the interfaced cuff, right sides together. Pin and sew all contours of the cuff, but leave the top open.



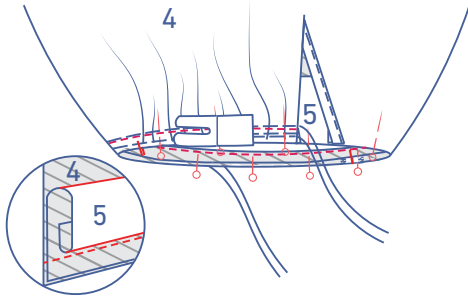
Trim the seam allowance at the corners.



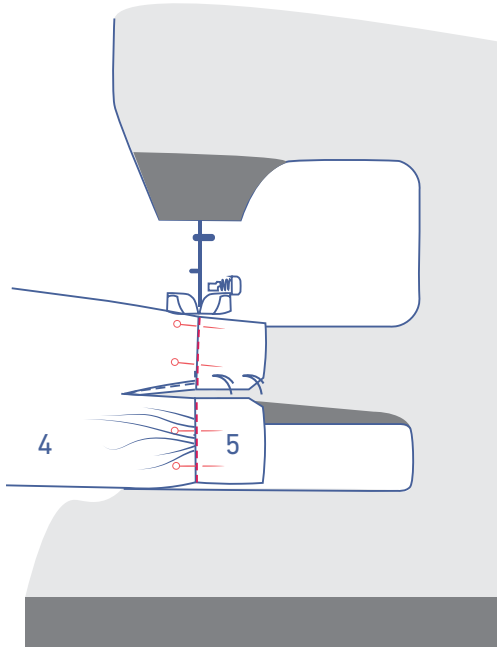
Turn the cuff the right way out. Neatly press flat.



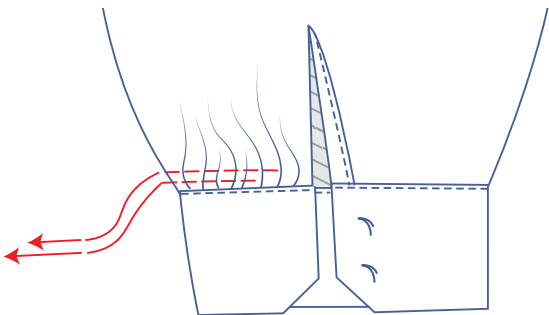
Pin the unpressed raw edge of the cuff to the bottom of the sleeve along the inside (= the wrong side). Distribute the gathers until the sleeve and cuff notches match. The other notch in the cuff should line up evenly with the underarm seam of the sleeve.



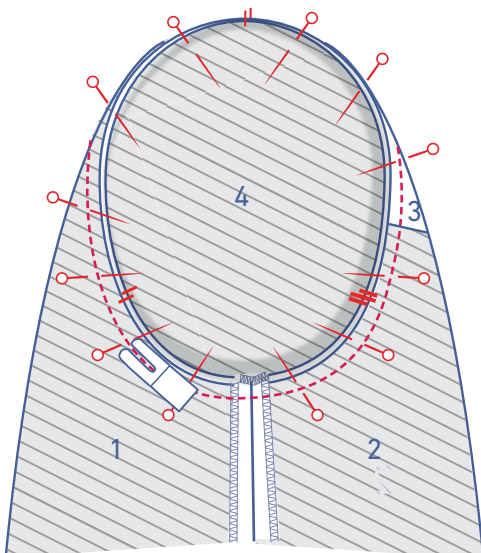
Sew into place.



Open the cuff out so that it is on the right side of the sleeve. Place the fold line directly over the previous stitching. Edgestitch into place.

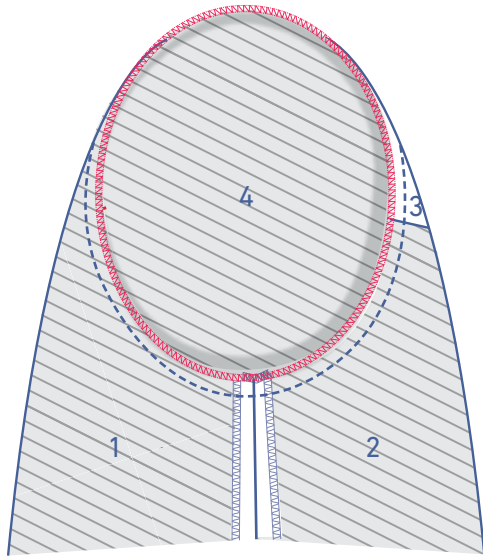


Remove the gathering threads.

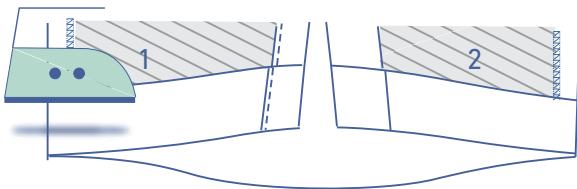


## 8

Pin the top of the sleeve (= the sleeve cap) to the armhole, matching the notches. The single notch marks the front, while the double notch marks the back. The top single notch should line up evenly with the single notch in the yoke. Distribute the excess fabric between the notches at the top and sew into place. Be careful not to snag or sew any pleats.

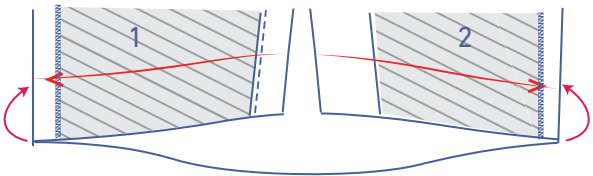
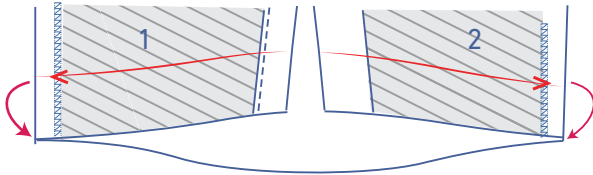


Finish the raw edges with overlock stitching.

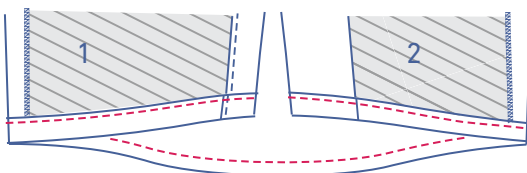
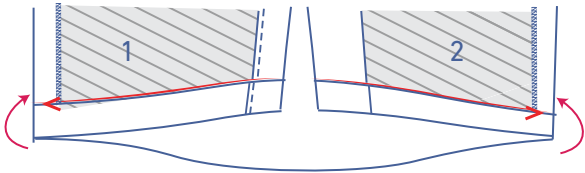


9

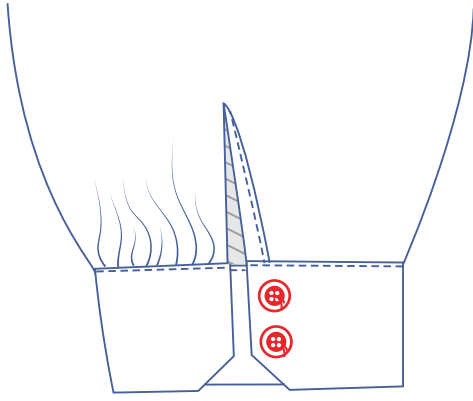
Press the hem allowance up at the V notches and then open back out.



Match the raw edge to the pressed fold line and fold up again.

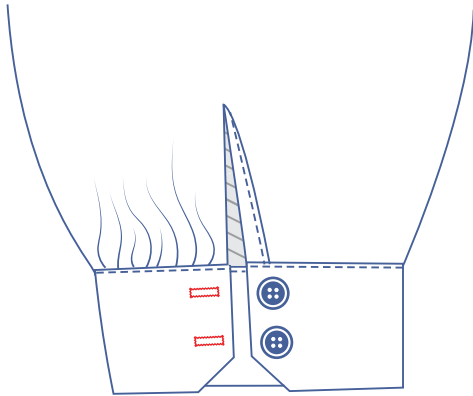


Edgestitch into place.



**10**

Sew the buttons onto the cuff where indicated.



Make horizontal buttonholes based on the button locations.