

Opal by Fibre ⚡ood



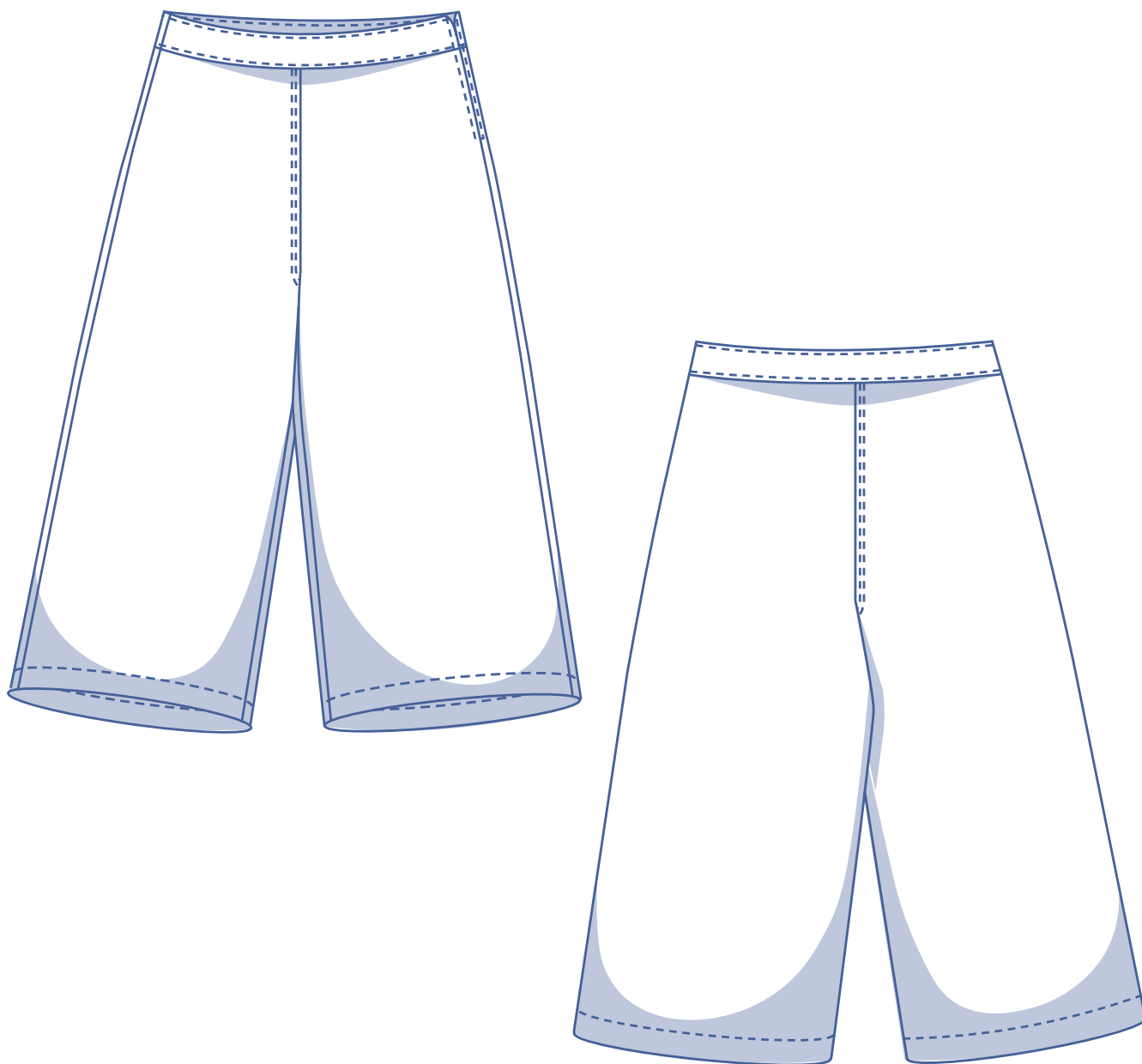
Opal by Fibre Mood



4 - 32

Opal's surname? Delightful! These culottes/trousers are a pretty quick project that's also a real win for your wardrobe.

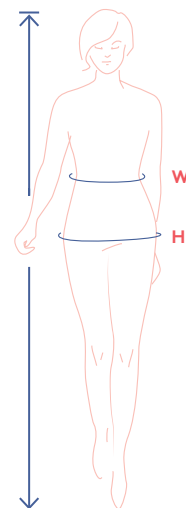
They fit perfectly and look a treat. The waistband fits comfortably and attractively, and the trouser legs drape gracefully at the hips, flaring elegantly towards the hem. Opal works well in woven and knit fabrics. With a simple side seam zip, you're set.



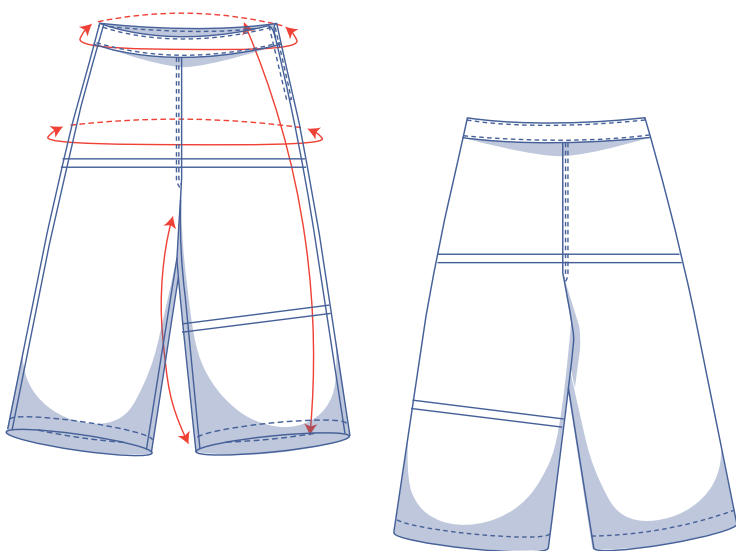
size chart (in cm)

size	4	6	8	10	12	14	16	18	20	22	24	26	28	30	32
body height	160	164	166	167	168	169	170	171	172	172	172	172	172	172	172
W (waist)	66	68	70	74	78	82	84	88	94.5	101	107.5	114	120.5	127	133.5
H (hips)	86	90	94	97	100	103	106	109	115	120	125	130	135	140	145

To choose your size, start with your **waistline measurement**. Pick the size that's the best match for your waistline. Next, check your hip measurement in the size chart below to see whether there is enough room or whether the pattern needs to be altered. It's easy to do. When tracing the pattern, simply trace from the line of one size to the line of the other.



pattern measurements (in cm)



This chart's measurements are the pattern measurements based on the fabric type and serve as a reference. Ease has been added to the width measurements (on top of the exact body measurements) for a more comfortable fit. Opal is designed to be **fitted at the waist and hips**. Depending on the preferred cut, you can go a size smaller or larger than the recommended size.

===== shorten or lengthen the pattern here

size	4	6	8	10	12	14	16	18	20	22	24	26	28	30	32
side length*	92.5	93	93.5	94	94.5	95	95.5	96	96.5	97	97.5	98	98.5	99	99.25
inseam length	63.25	63.25	63.25	63.25	63.25	63.25	63.25	63.25	63.25	63.5	63.5	63.5	63.5	63.75	63.75
waistline	65.5	67.5	69.5	73.5	77.5	81.5	83.5	87.5	94	100.75	107.25	113.75	120.25	126.75	133.25
hips	94.25	98.25	102.25	105.25	108.25	111.25	114.25	117.25	123.25	128.25	133.25	138.25	143.25	148.25	153.25

* Including the waistband.

Compare the stated lengths to the measured or desired lengths. **Shorten** or **lengthen** the rise and/or trouser legs by cutting the pattern pieces at the indicated double lines. Then either increase the distance between the cut pieces by the desired amount (to lengthen) or overlap the pieces (to shorten). Make sure that the CF and CB lines and the side seams are always straight.



IMPORTANT

Adjust the amount of fabric to be used based on these alterations.

notions



- Thread
- Iron-on interfacing: max. 40 cm
- Closed-end zip: see table
- Fabric: see table

zip		4	6	8	10	12	14	16	18	20	22	24	26	28	30	32
length	cm	18	18	18	18	18	18	18	18	20	20	20	20	20	20	20

fabric		4	6	8	10	12	14	16	18	20	22	24	26	28	30	32
fabric width 110 cm	cm	215	215	220	220	220	220	225	225	225	245	245	250	250	250	265
fabric width 140 cm	cm	170	175	185	195	200	205	215	220	225	225	230	230	230	230	250

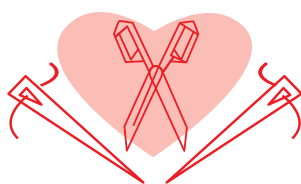
The corresponding fabric layout can be found on page 6 of these sewing instructions.

fabric advice



Opal works great in a variety of different fabrics. Stiffer fabrics, like denim, cotton, corduroy, etc. are all fantastic. Or you could create a different sort of visual appeal with a soft drape (woollen) fabric. Think gabardine, flannel, crepe, and more. And prints? Well, why not start with Glen check, tartan, or houndstooth? Opal is also perfect in knit fabrics (in which case, omit the zip).

Proud to be #Sewista



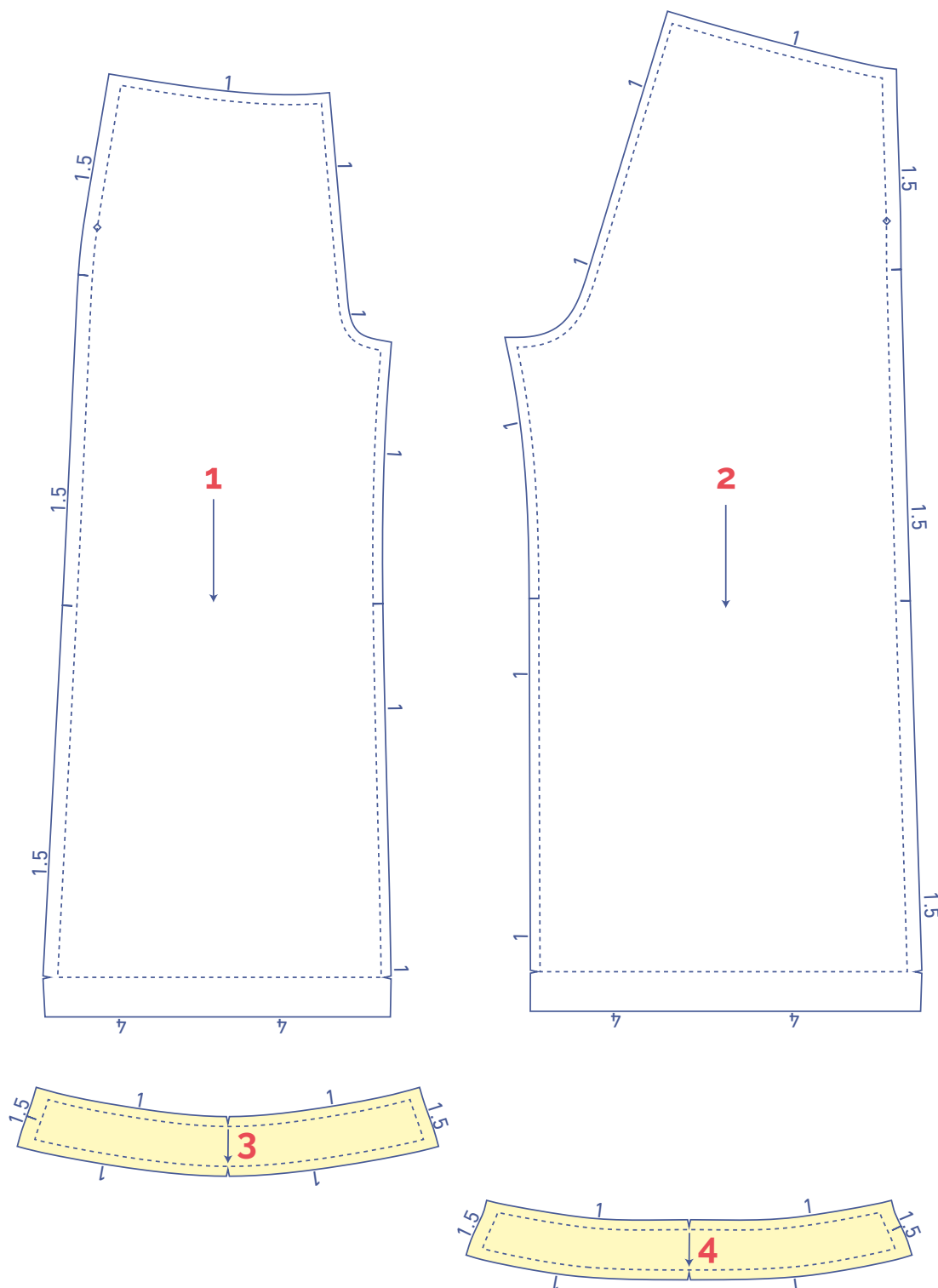
pattern pieces & seam allowances (in cm)

To sew the garment as described in the instructions, draw the illustrated seam allowances around the paper pattern pieces before cutting them out. If you are using a PDF pattern, the pattern can be printed with or without seam allowance. To find out more, watch the [video](#).

1. front: 2x
2. back: 2x
3. waistband front: 2x
4. waistband back: 2x



NOTE

Pattern pieces 1 and 2 are for the short version.



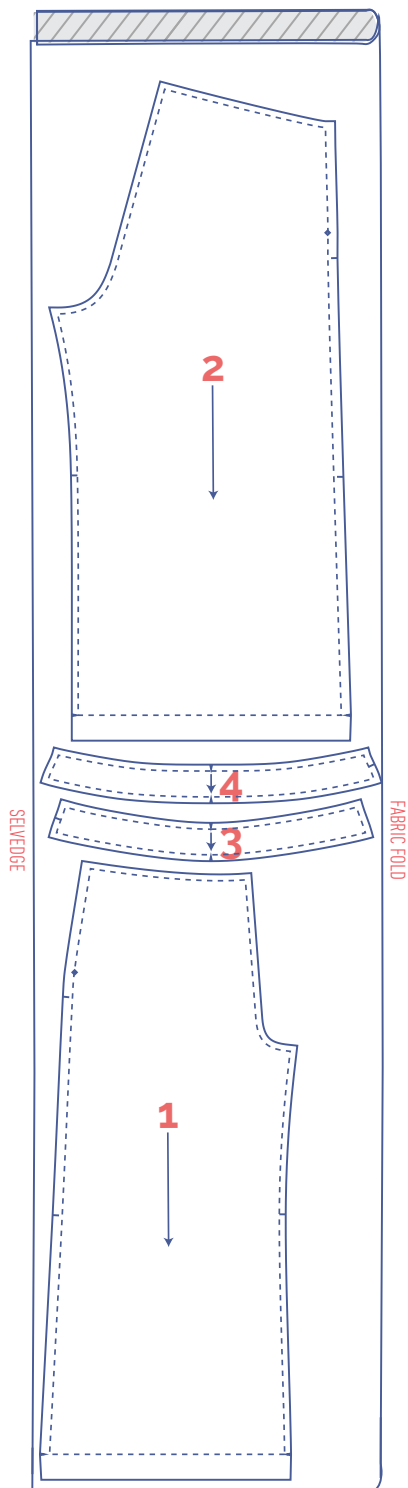
IMPORTANT

The pieces highlighted in light yellow have iron-on interfacing attached to the wrong side.

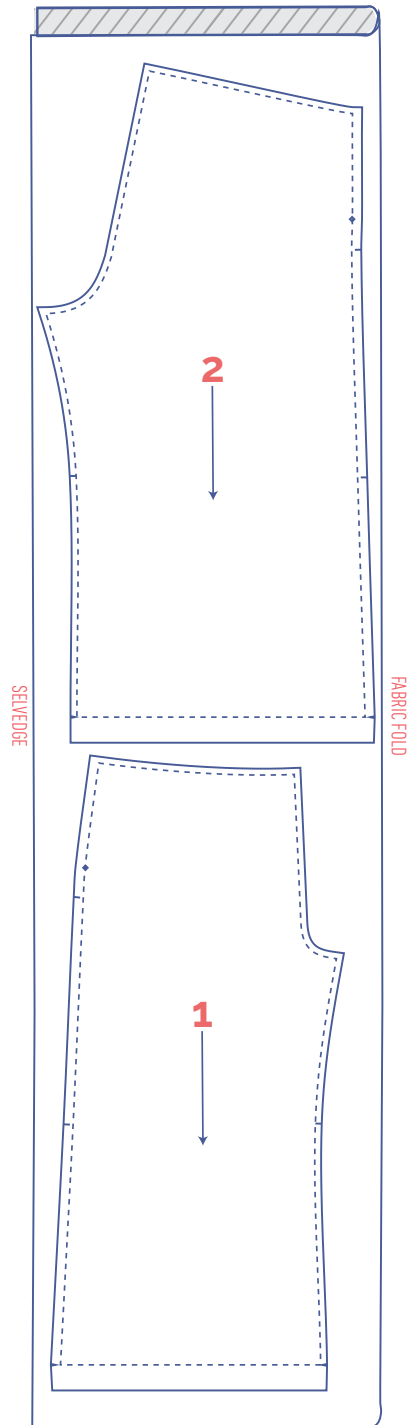
?	material type
	fabric
	iron-on interfacing

fabric layout – solid fabrics
fabric width 110 cm

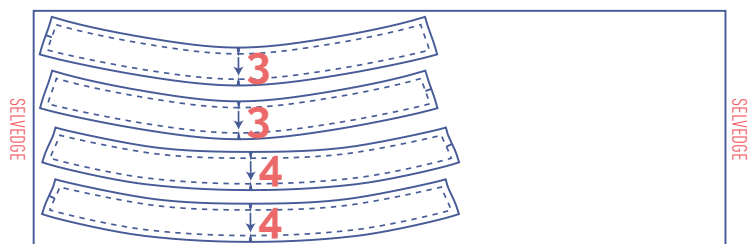
4 - 20



22 - 28

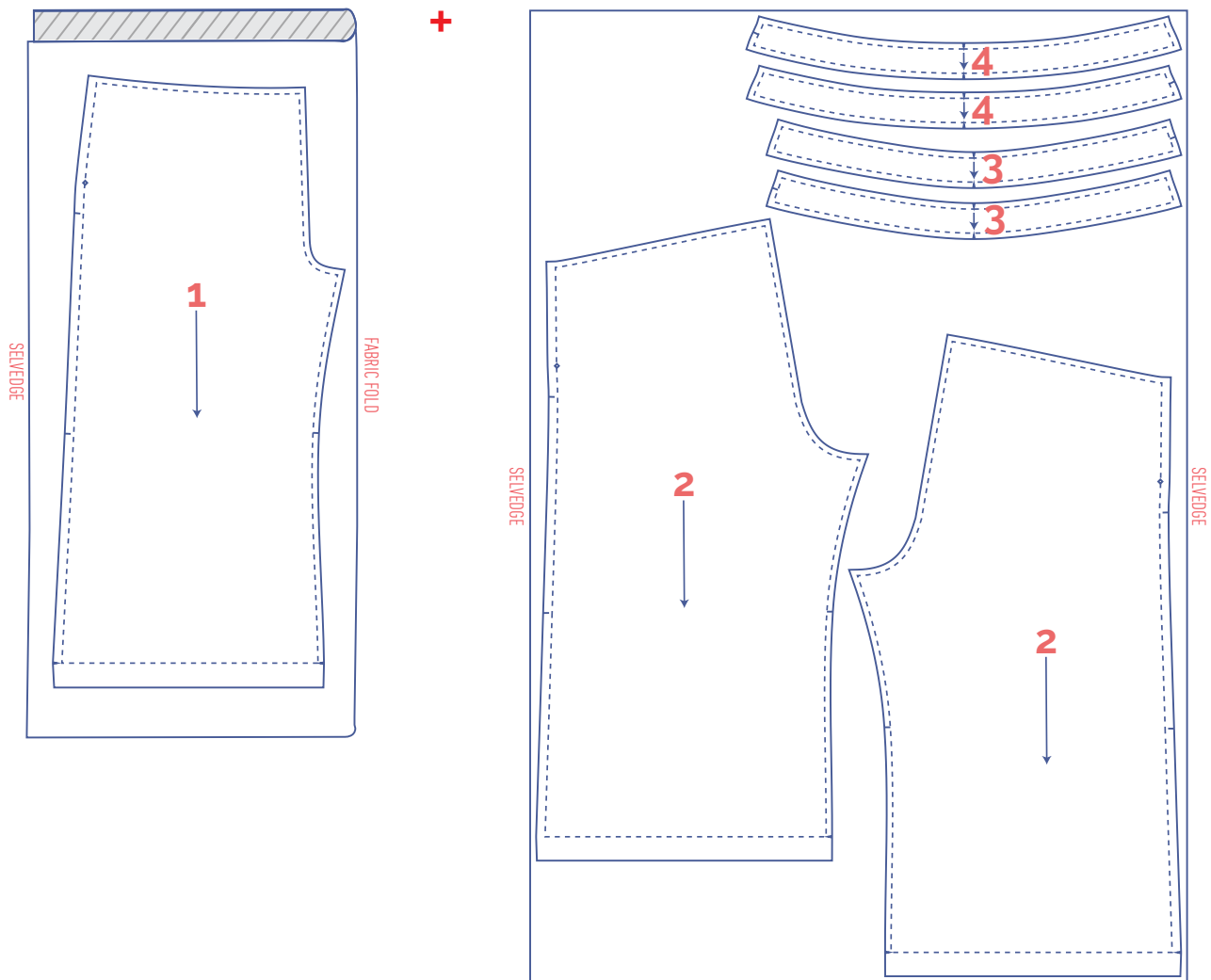


+



IMPORTANT

Make sure to cut the mirror image of pattern pieces 3 and 4.

**IMPORTANT**

Make sure to cut the mirror image of pattern pieces 2, 3 and 4.

marking pattern pieces



notch the pattern paper and fabric at the following points



single notch



V notch



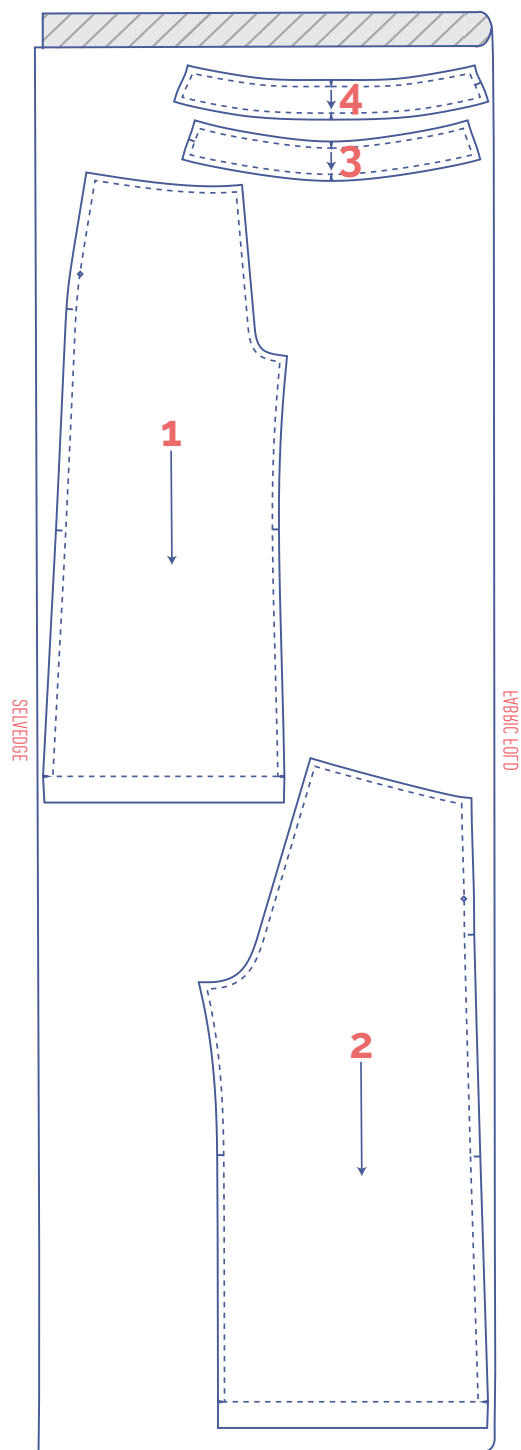
mark the following points with marking thread



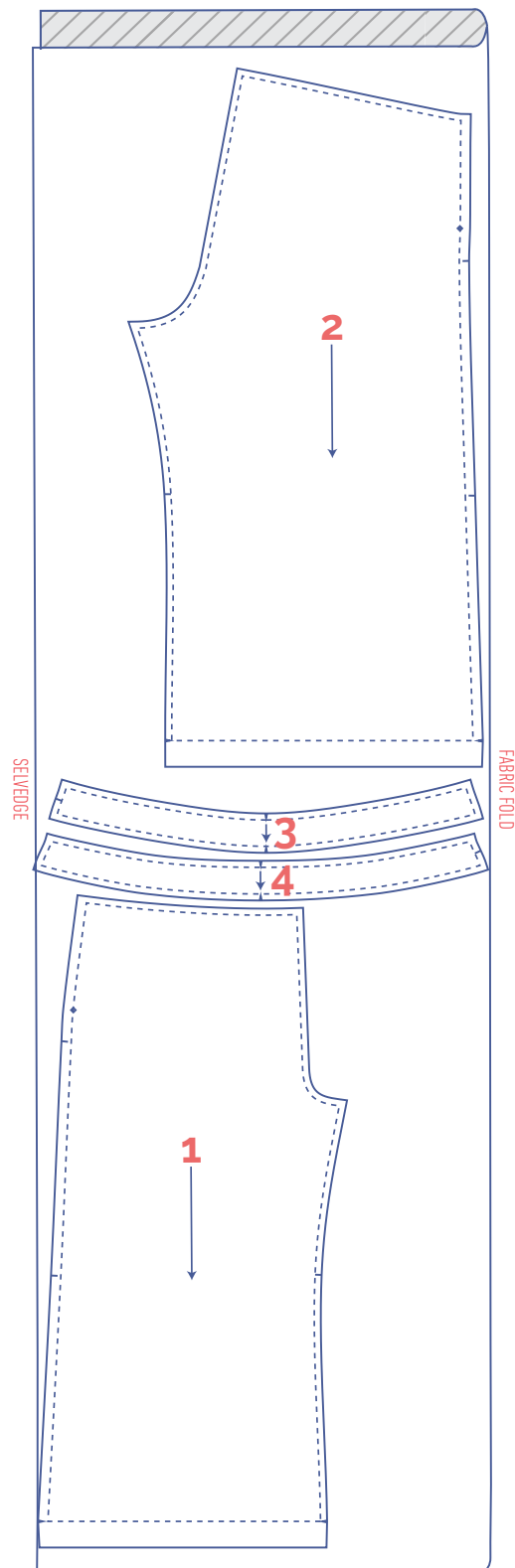
centre point

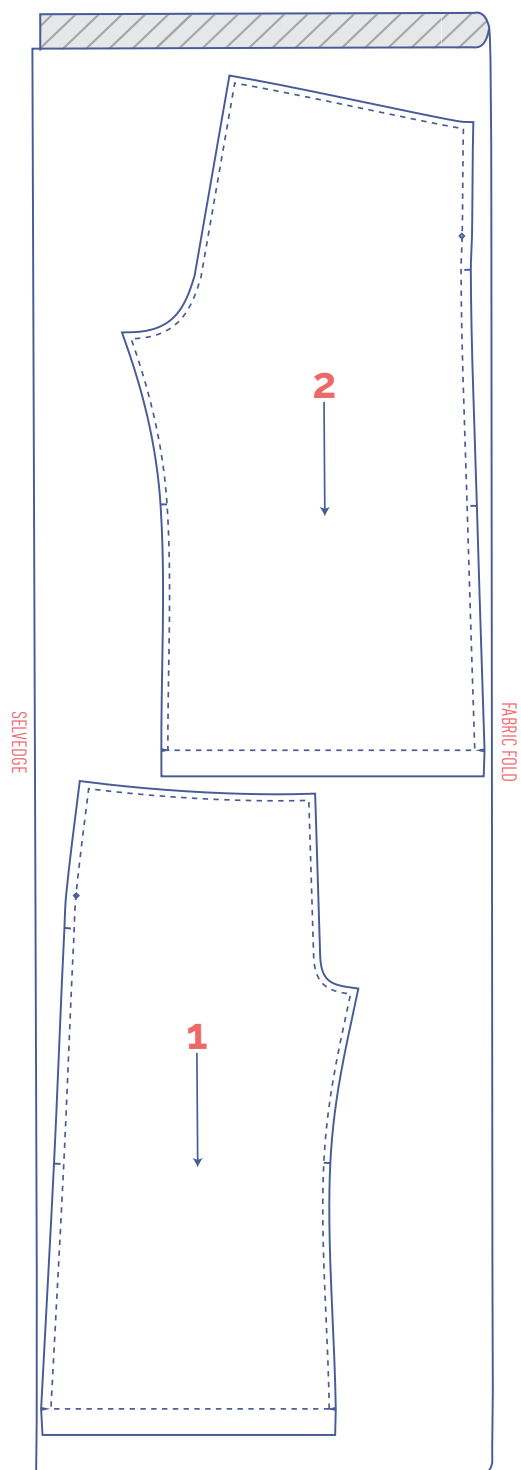
fabric layout – solid fabrics
fabric width 140 cm

4 - 18

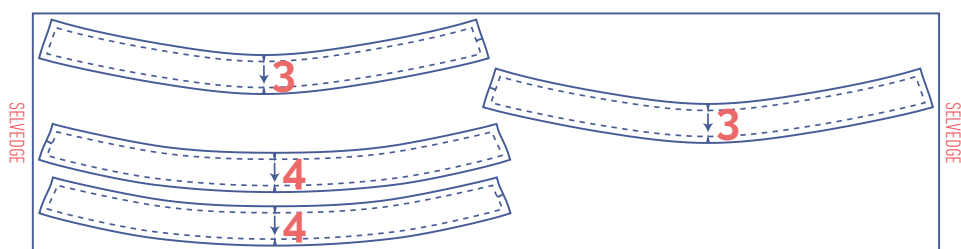


20 - 30





+

**IMPORTANT**

Make sure to cut the mirror image of pattern pieces 3 and 4.

marking pattern pieces

notch the pattern paper and fabric at the following points



single notch



V notch



mark the following points with marking thread



centre point

sewing instructions



The method used to finish the seams depends on the fabric used.
The pieces are always sewn together with the right sides of the fabric facing, unless stated otherwise.

F front

B back

CF centre front

CB centre back

LF left front

RF right front

RB right back

LB left back

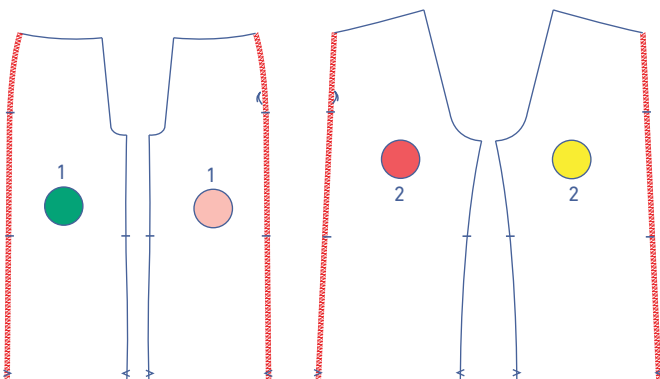
right side

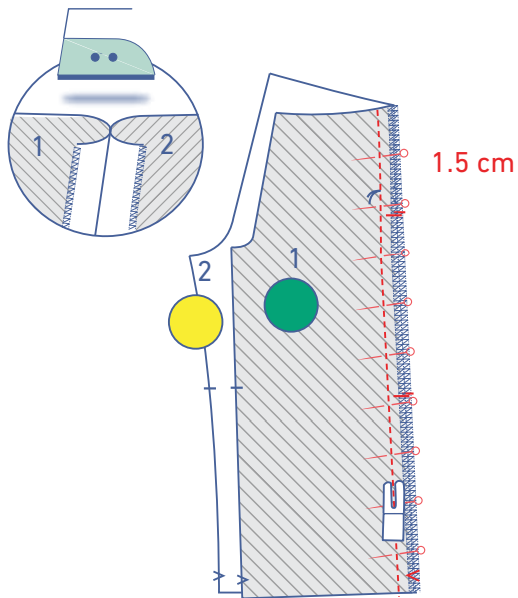
wrong side

iron-on interfacing

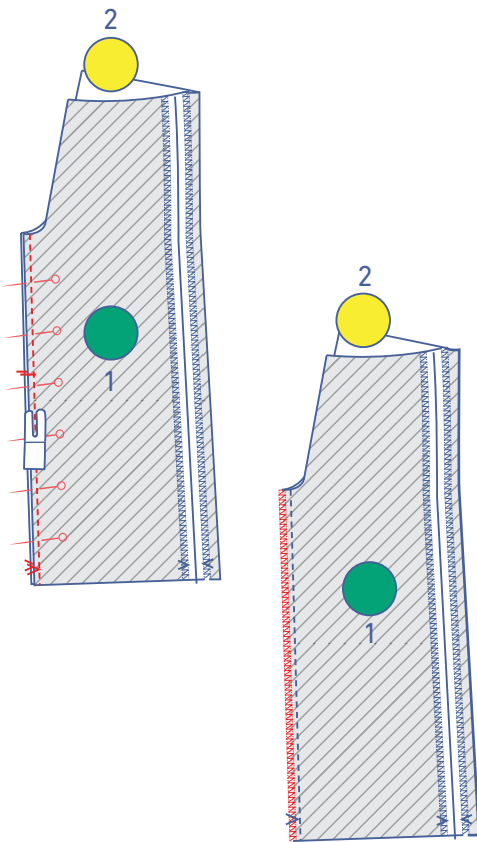
1

Finish the sides of the front (1) and back (2) with overlock stitching.



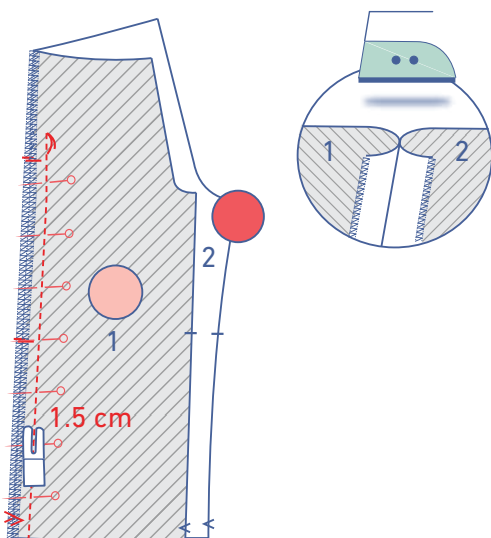


Pin and sew the side seam of the RF and RB together at 1.5 cm from the raw edges. Press the seam allowance open.

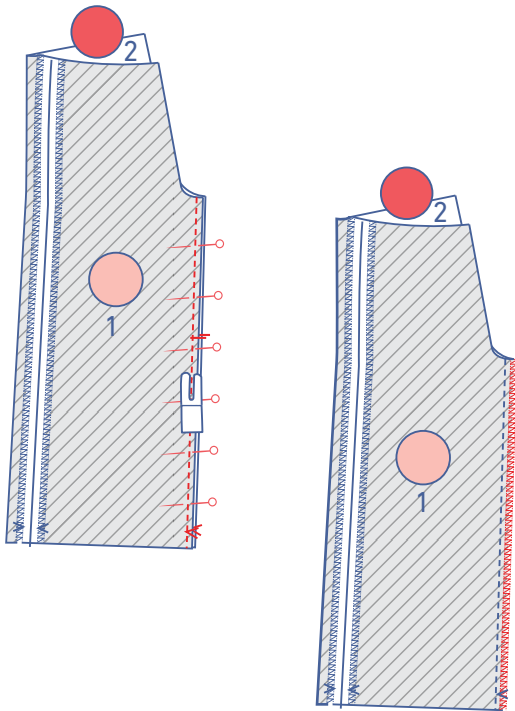


Pin and sew the inseam of the RF and RB together.

Finish the raw edges with overlock stitching.

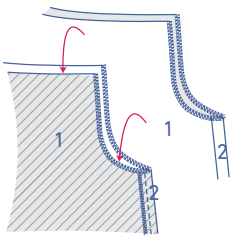


Pin and sew the side seams of the LF and LB together from the marking thread to the hem at 1.5 cm from the raw edges.



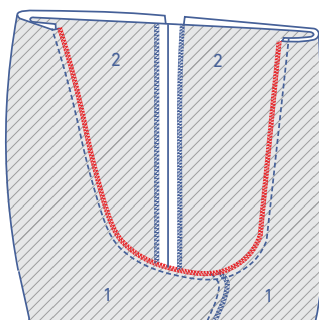
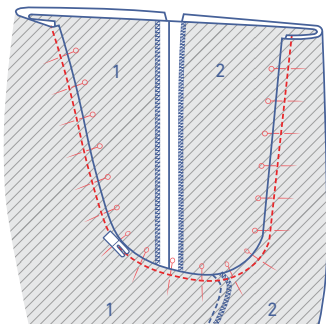
Pin and sew the inseams of the LF and LB together.

Finish the raw edges with overlock stitching.

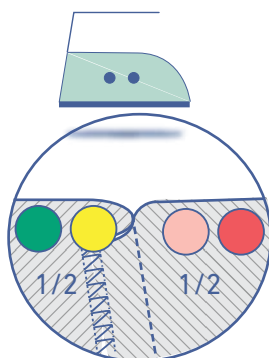


2

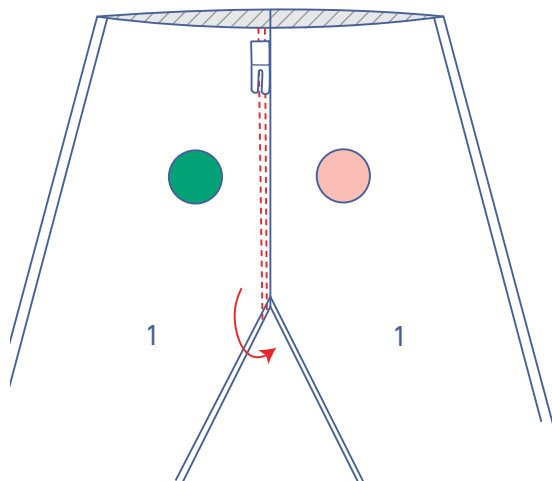
Slide one trouser leg into the other with the right sides touching. Pin and sew the crotch seam into place.



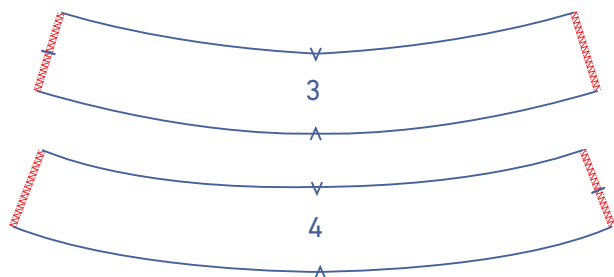
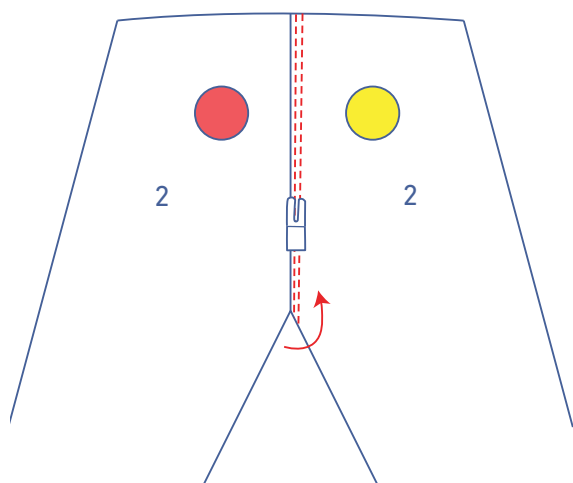
Finish the raw edges with overlock stitching.



Press the seam allowance in the direction indicated.

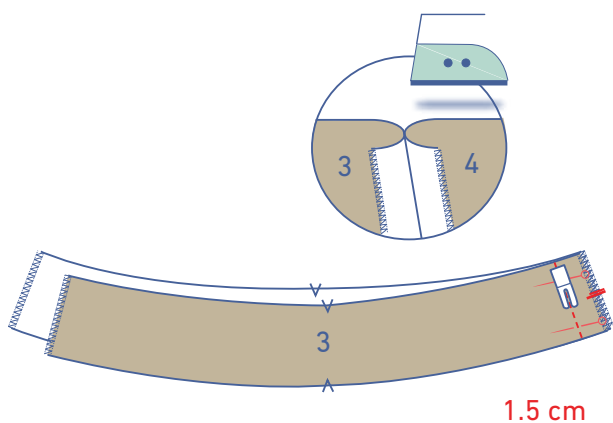


Sew the RF and RB with two rows of topstitching, right next to the seam.

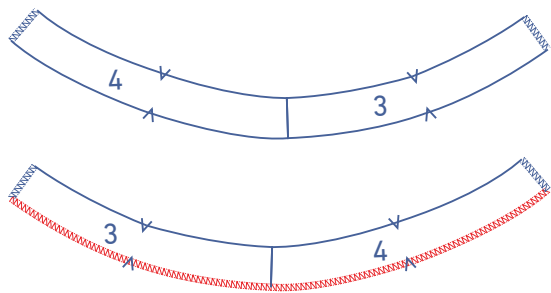


3

Finish the sides of the waistband piece front (3) and waistband piece back (4) with overlock stitching.



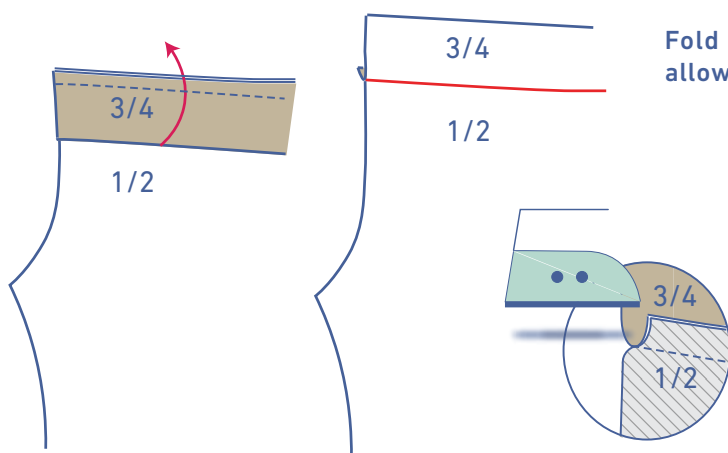
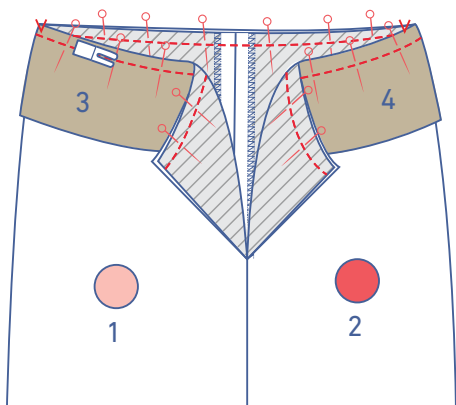
Pin and sew the indicated short side seams of both waistbands together at 1.5 cm from the raw edge. Press the seam allowance open.



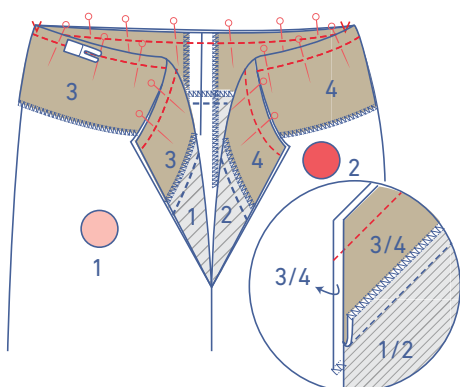
Finish one of the waistbands with overlocking where indicated

4

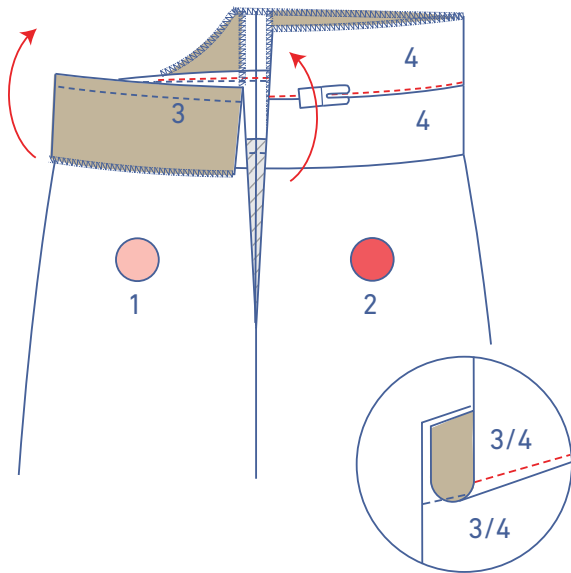
Pin and sew the bottom of the unoverlocked waistband to the top of the trousers.



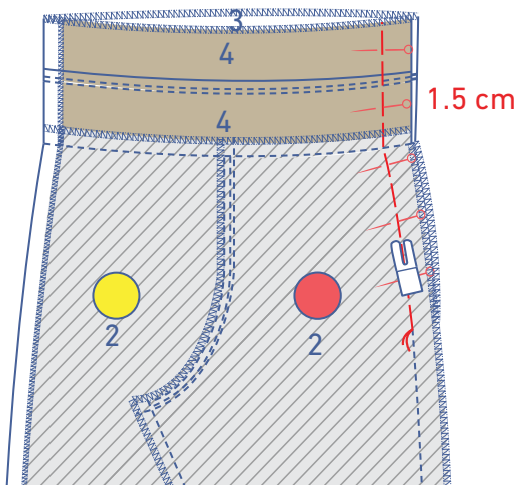
Fold the unoverlocked waistband up. Press the seam allowance towards the waistband.



Pin and sew the top of the overlocked waistband to the top of the unoverlocked waistband.

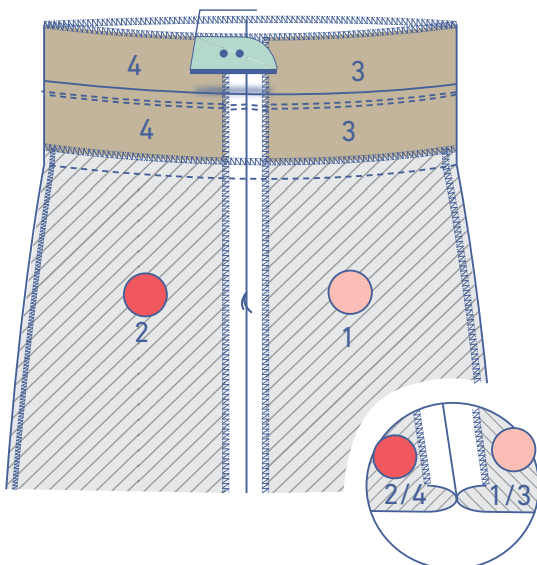


Fold the overlocked waistband and the seam allowance up towards the waistband with the overlocking. Sew the waistband to the seam allowance underneath, right next to the seam.

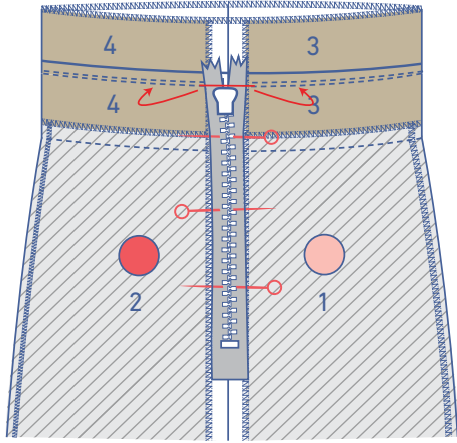


5

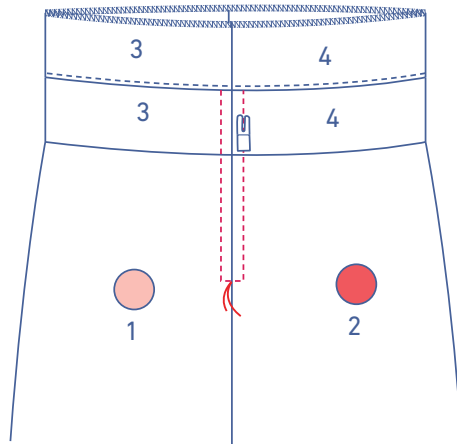
Pin the left side seam. Using a long stitch length, sew together up to the marking thread at 1.5 cm from the raw edges (= tacking). This holds the seam in place while you install the zip, and will be removed later.



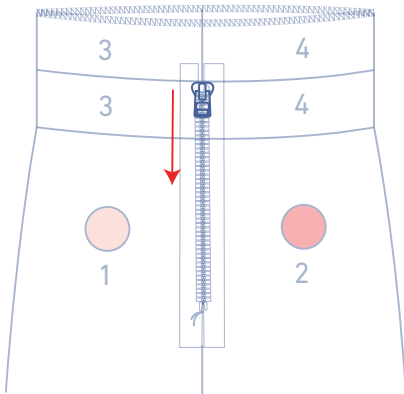
Press the seam allowance open.



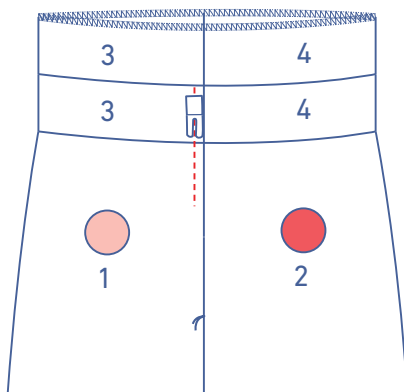
Place the trousers in front of you with the wrong side facing up. Lay the zip right side down on top of the seam allowance that has been pressed open. The middle of the zip (teeth) should line up evenly with the side seam. The zip starts just under the indicated seam. Pin the zip into place.



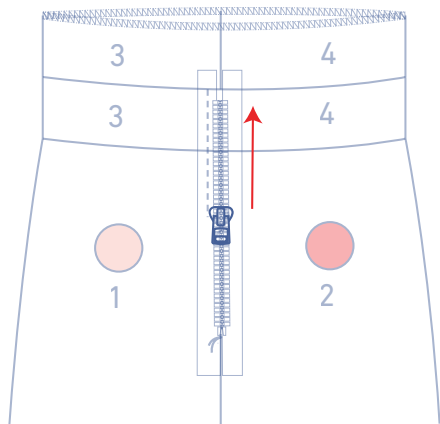
Turn the trousers over so that the right side is facing up. Sew the zip into place, as illustrated in the diagram, following the steps below.



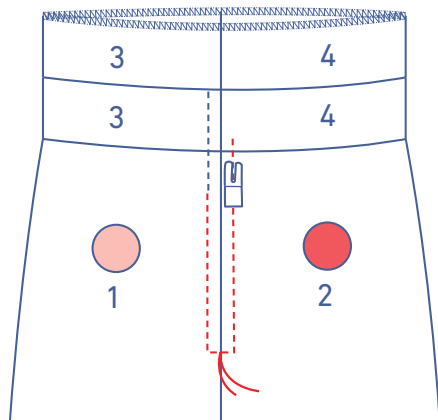
To sew the top part of the zip, unzip the slider a short way from the back of the zip.



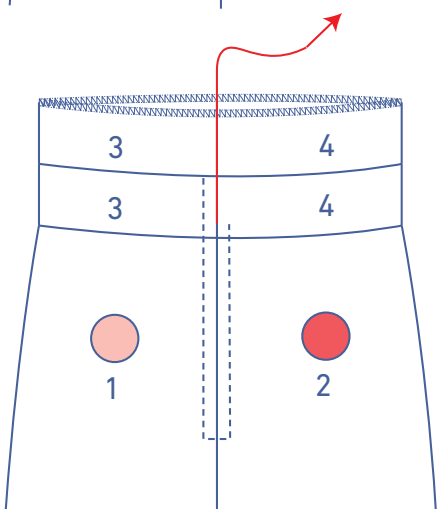
Sew the top part of the zip into place at presser foot width from the side seam.



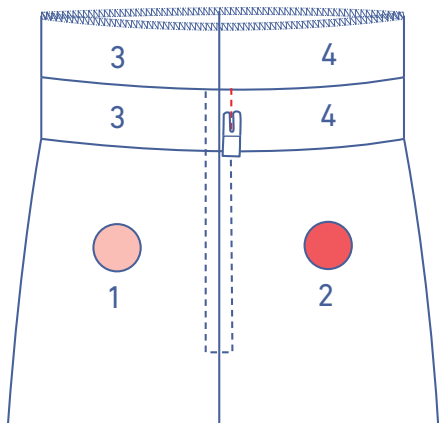
Now, zip the slider back up.



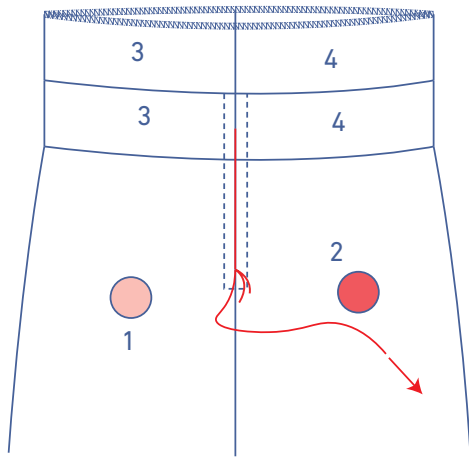
Sew the rest of the zip into place. Leave the needle in the fabric at the marking thread (= the first corner) and raise the presser foot. Turn the garment and sew a neat horizontal line from the LF to the LB (make sure that you are sewing past the zip's bottom stop). Repeat these steps to sew the second corner. Now, sew as far as you can.



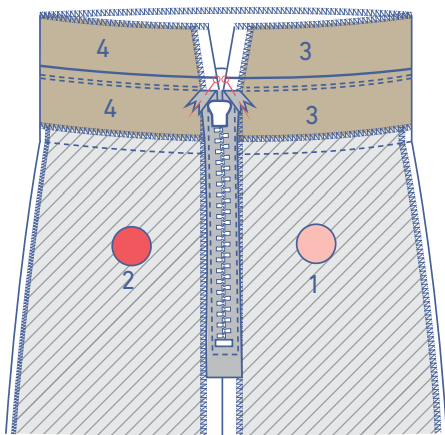
Remove part of the tacking you stitched earlier in order to unzip the slider again and sew the last part of the zip.



Sew the last part of the zip into place.

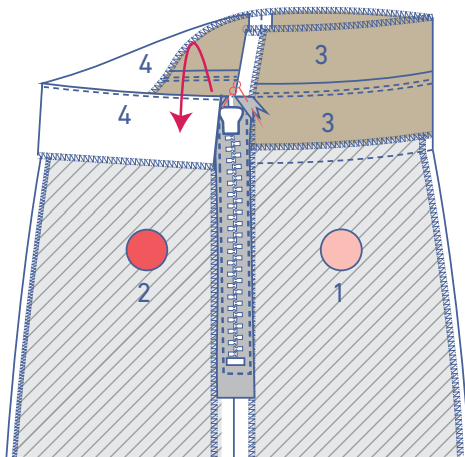


Remove the rest of the tacking.

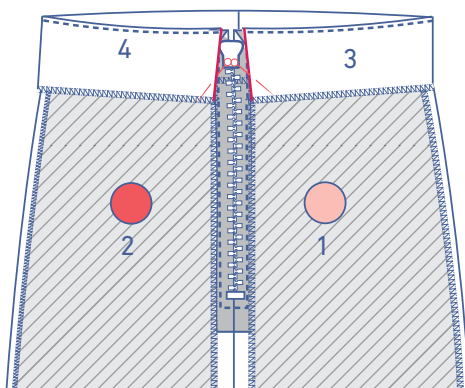


6

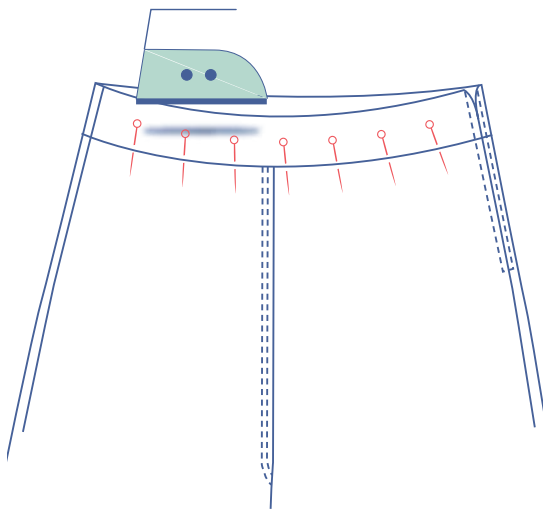
Turn the trousers inside out again. Fold the top of the zip tape over and pin into place.



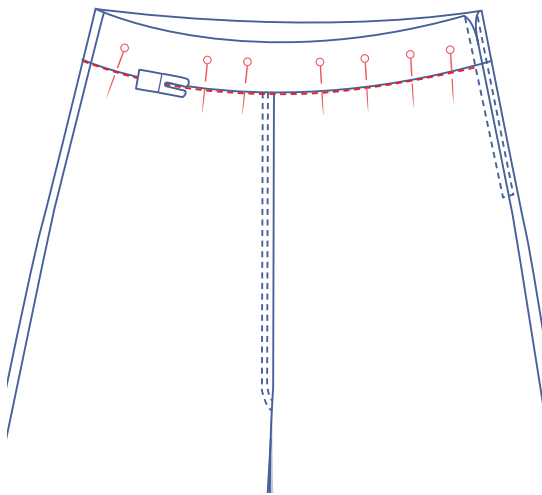
Fold the overlapped waistband all the way over to the wrong side.



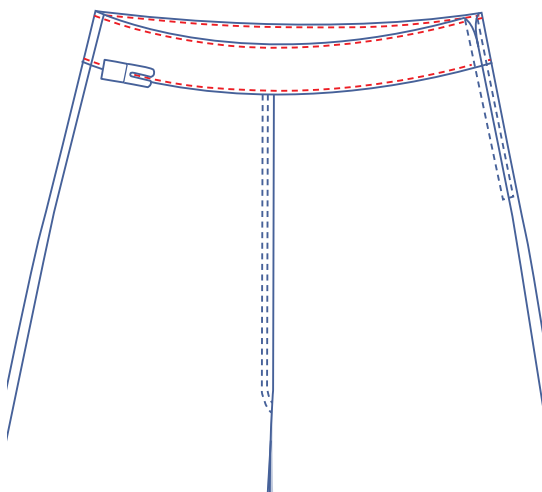
Place the pressed ends of the waistband so that they line up evenly with the zip stitching. Pin into place.



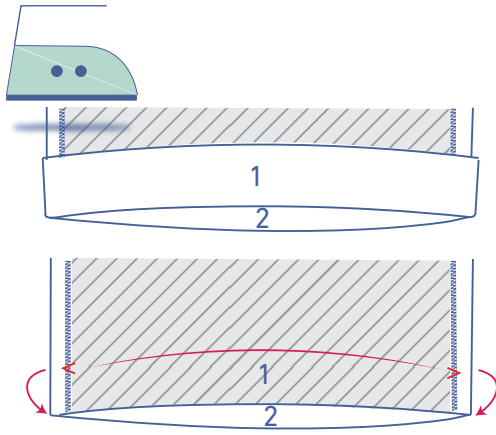
Press the waistbands neatly flat along the right side of the garment, and pin the front and back of the waistbands together.



Stitch in the ditch.

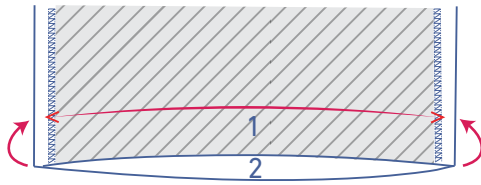


Topstitch the waistband.

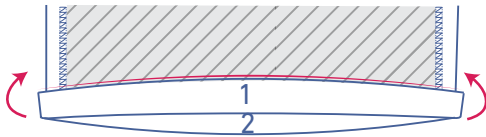


7

Press the hem allowance over onto the wrong side and then open back out.



Match the raw edge to the pressed fold line and fold up again at the pressed fold line.



Edgestitch into place.

