

Nina by Fibre ⚡ood

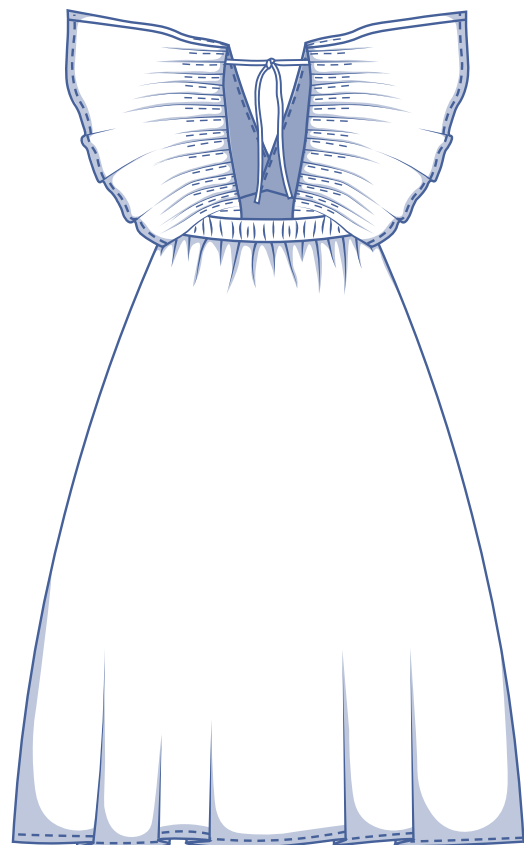
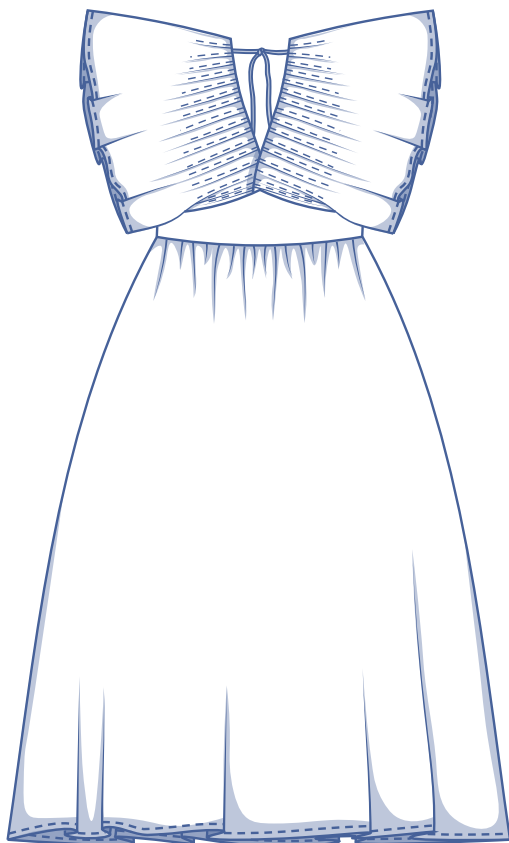


Nina by Fibre Mood



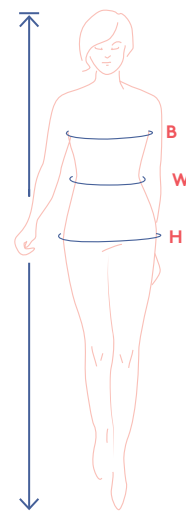
4 - 32

Nina is a winged beauty with an empire waist. Wow! The elegant bodice features a plethora of pleats that alluringly fan out towards the sleeve hem and the effect is accentuated with a plunging V neck at the front. The back dazzles with a square keyhole, bound at the top with a delicate tie. Every detail counts. The high waistband handsomely gives waist definition and the gathers below the waistband give way to a subtle bell skirt. To top it off, there are side seam pockets to up the practicality factor.



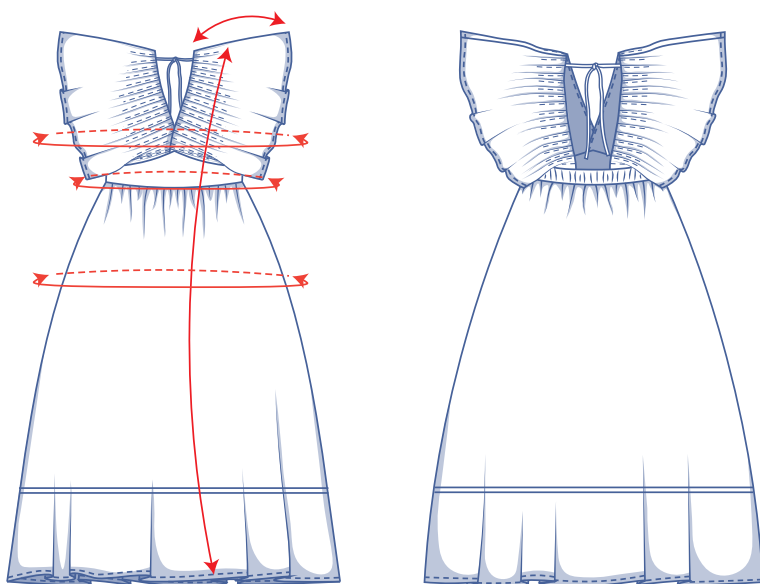
size chart (in cm)

size	4	6	8	10	12	14	16	18	20	22	24	26	28	30	32
body height	160	164	166	167	168	169	170	171	172	172	172	172	172	172	172
B (bust)	76	80	84	88	92	96	100	104	110	116	122	128	134	140	146
W (waist)	66	68	70	74	78	82	84	88	94.5	101	107.5	114	120.5	127	133.5
H (hips)	86	90	94	97	100	103	106	109	115	120	125	130	135	140	145



Choose your size based on your **bust measurement**. If your waist and hip measurements are wider than those in the size chart, check the waist and hip measurements in the chart below to see if there is enough ease or whether the pattern should be altered. It's easy to do. When tracing the pattern, simply trace from the line of one size to the line of the other.

pattern measurements (in cm)



This chart's measurements are the pattern measurements based on the fabric type and serve as a reference. Ease has been added to the width measurements (in addition to the exact body measurements) for a more comfortable fit. Nina is designed to be **fitted at the bust and relaxed at the hips**.

== shorten or lengthen the pattern here

size	4	6	8	10	12	14	16	18	20	22	24	26	28	30	32
length	115.75	116.25	116.75	117.5	118	118.5	121	121.5	125.5	126.25	127	127.75	128.5	129.5	130.25
sleeve length*	29	29.5	30	30.5	31	31.5	32	32.5	33.25	33.75	34.5	35	35.75	36.5	37
bust	85.75	89.75	93.75	97.5	101.5	105.25	109.25	113	119	125	130.75	136.5	142.25	148	153.75
waistband measurement**	83.5	85.5	87.5	91.5	95.5	99.5	101.5	105.5	112	118.5	125	131.5	138	144.5	151
hips	165.5	169.25	172.75	179.5	186.25	193.25	196.75	203.5	214.75	226	237.25	248.5	260	271.25	282.5

* Including the shoulder length.

** This is the underbust measurement without elastic.

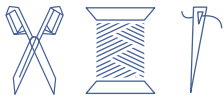
Compare the stated lengths to the measured or desired lengths. **Lengthen** or **shorten** the dress by cutting the pattern pieces along the indicated double lines. Then either increase the distance between the cut pieces by the desired amount (to lengthen) or overlap the pieces (to shorten). Make sure that the CF and CB lines and the side seams are always straight.



IMPORTANT

Adjust the amount of fabric to be used based on these alterations.

notions



- Thread
- Elastic* (width 3 cm): see table
- Fabric: see table

elastic		4	6	8	10	12	14	16	18	20	22	24	26	28	30	32
length	cm	33.5	34.25	35	36.75	38.5	40.25	41	42.5	45.25	47.75	50.5	53	55.5	58.25	60.75

* The elastic's stated measurements are merely indicative and depend on the type of elastic. Before permanently sewing the elastic to the waistband, first pin the elastic all the way around to determine the precise length you prefer.

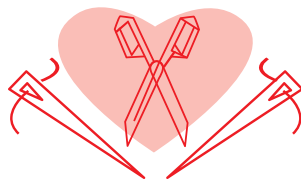
fabric use		4	6	8	10	12	14	16	18	20	22	24	26	28	30	32
fabric width 110 cm	cm	330	330	335	400	410	420	425	435	480	500	520	540	560	580	605
fabric width 140 cm	cm	280	280	285	290	295	325	330	330	340	345	465	485	500	515	535

fabric advice



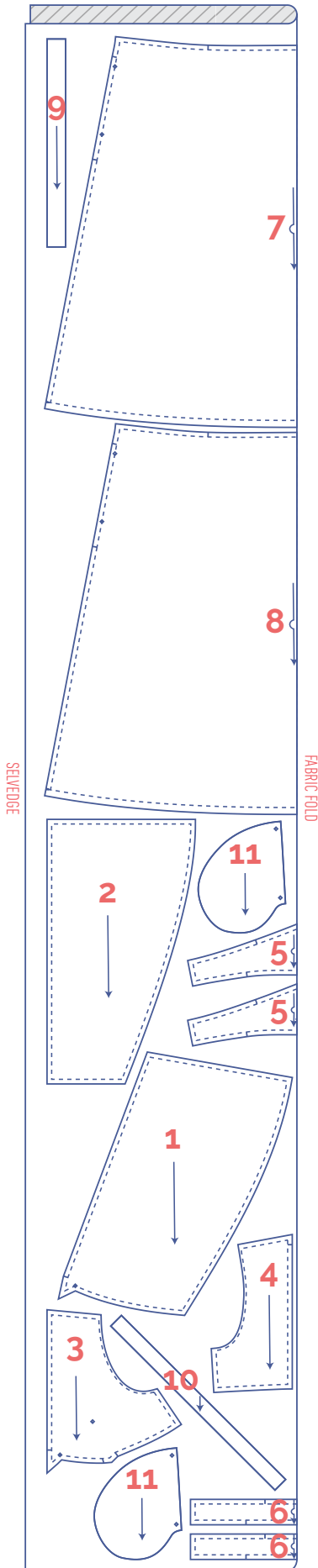
Nina works best in a woven fabric. A structured fabric such as poplin or batiste will result in a more statement dress. If you want the dress to turn out soft and swishy, select a fabric with a fluid drape (e.g. silk satin, double gauze, viscose crepe, or muslin).

Proud to be #Sewista

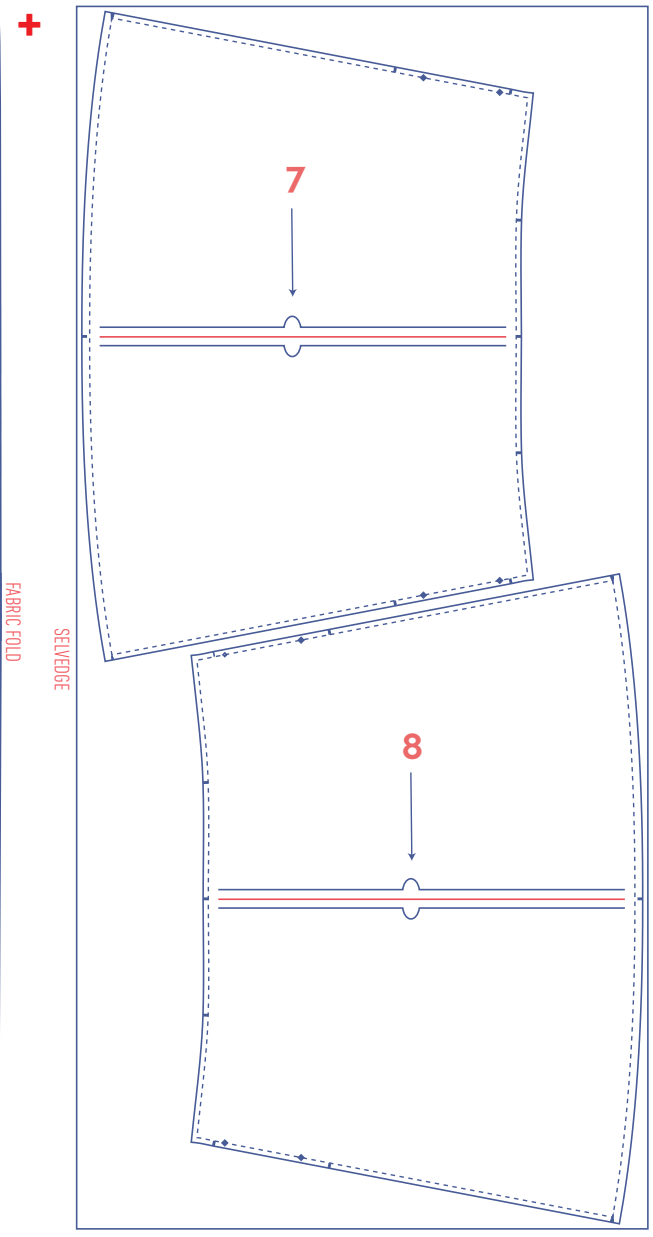
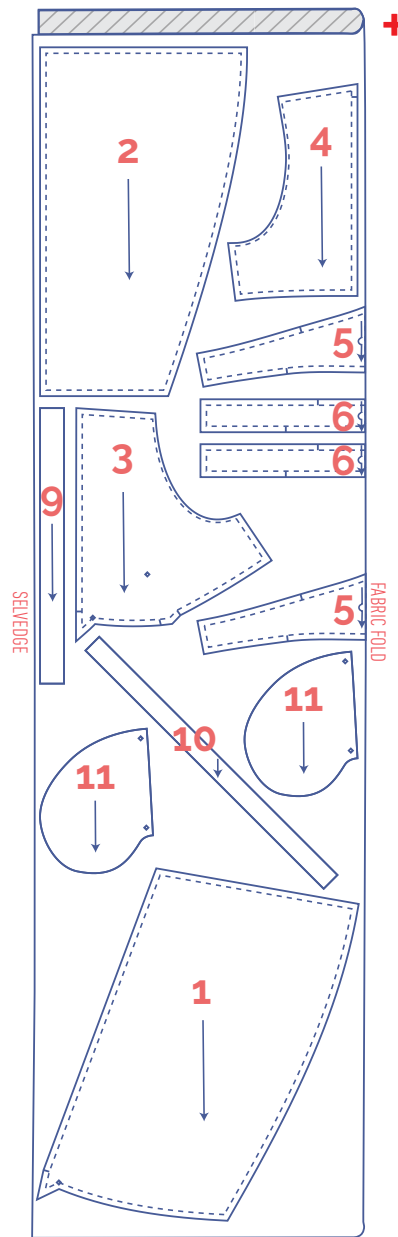


fabric layout – solid fabrics
fabric width 110 cm

4 - 8

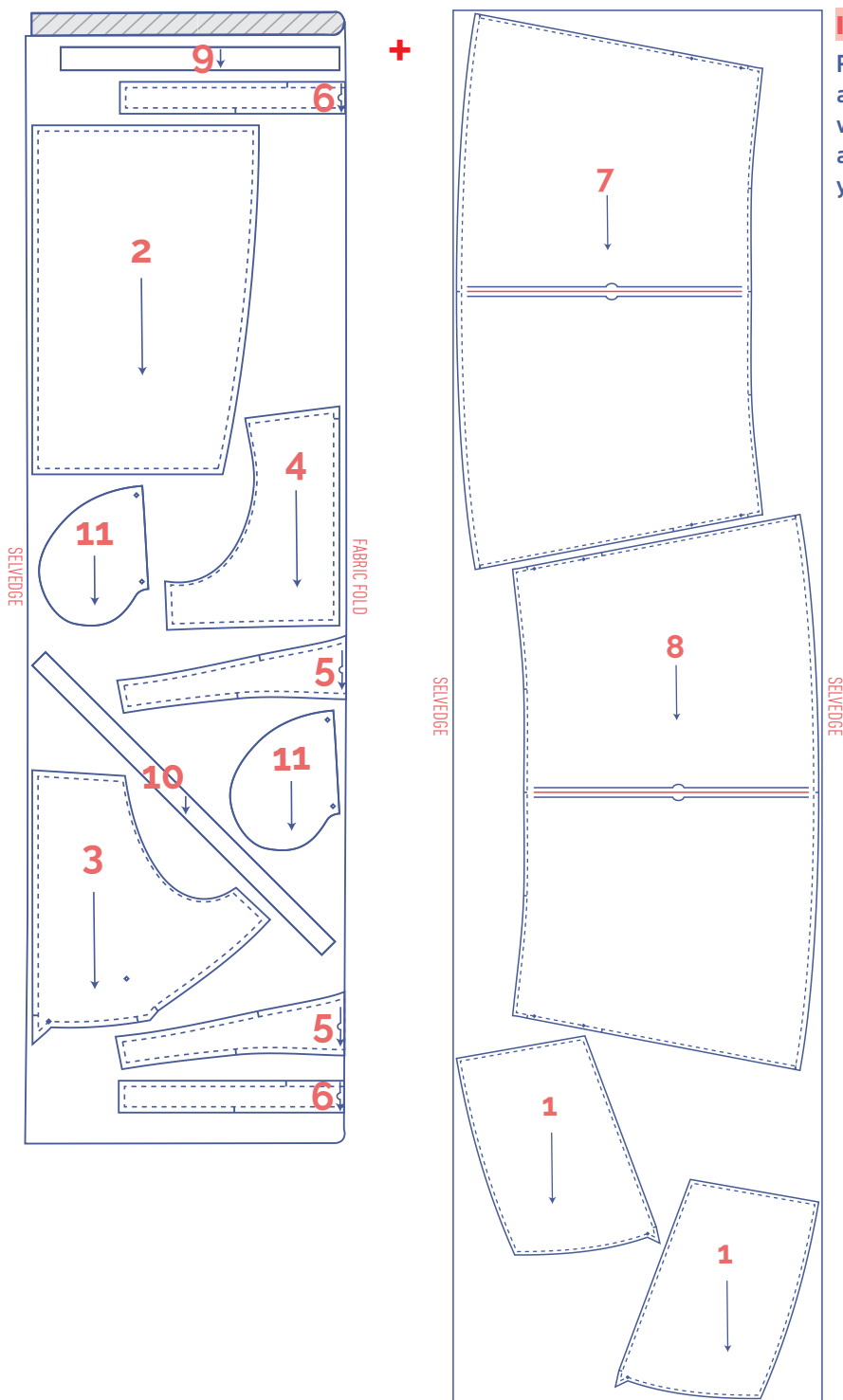


10 - 18



IMPORTANT


Pattern pieces 7 and 8 have been rotated at a 90° angle to fit the fabric width. If you are working with a patterned or napped fabric and you want everything in the same direction you may need some extra fabric.



IMPORTANT

Pattern pieces 7 and 8 have been rotated at a 90° angle to fit the fabric width. If you are working with a patterned or napped fabric and you want everything in the same direction you may need some extra fabric.

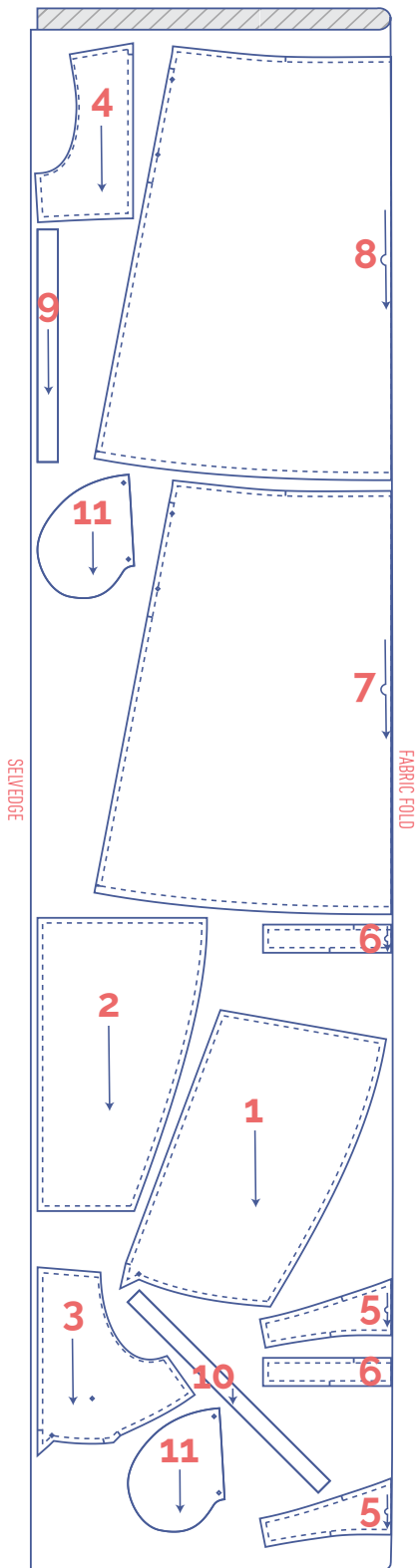
marking pattern pieces

	Notch the pattern paper and fabric at the following points
	single notch
V	V-notch/fabric fold

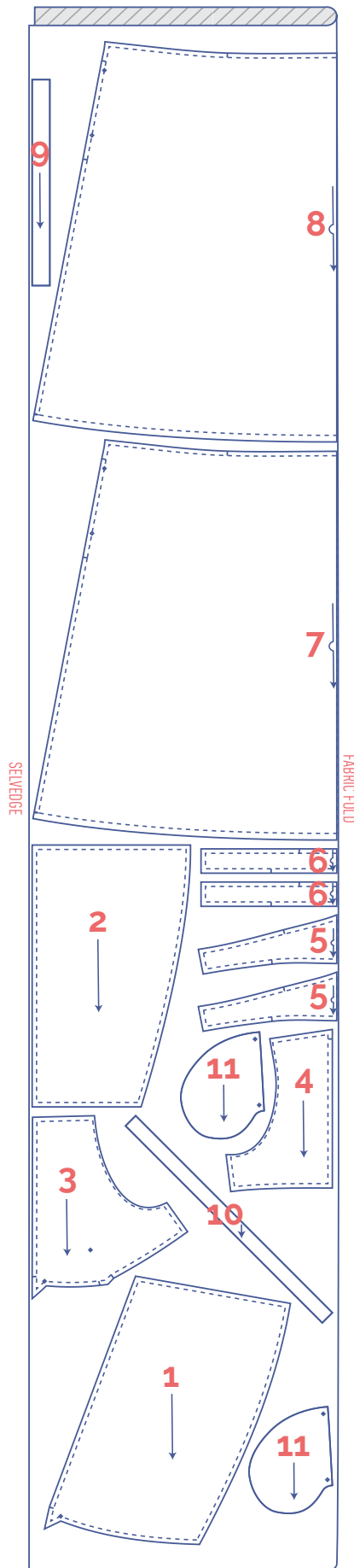
	Mark the following points with marking thread
	centre point

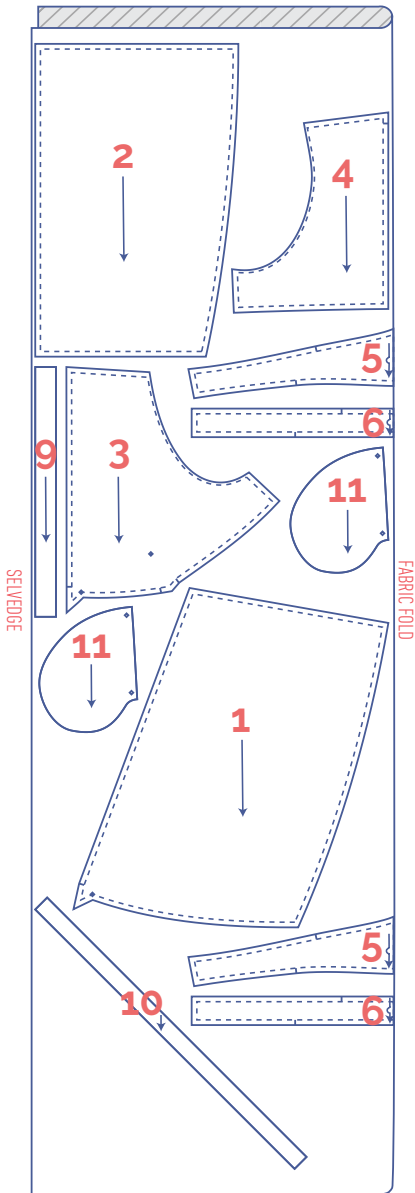
fabric layout – solid fabrics
fabric width 140 cm

4 - 12

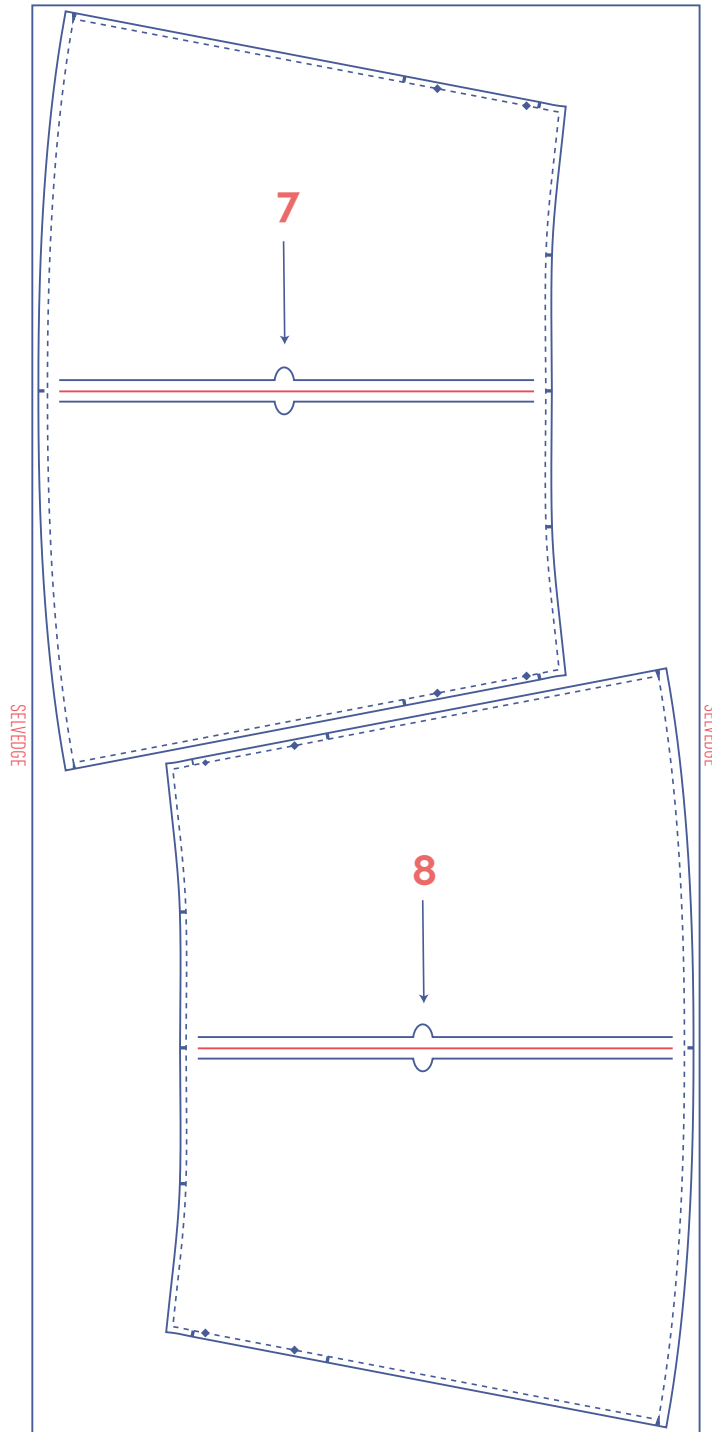


14 - 22








+



marking pattern pieces

	Notch the pattern paper and fabric at the following points
	single notch
V	V-notch/fabric fold
	Mark the following points with marking thread
	centre point

IMPORTANT





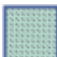
Pattern pieces 7 and 8 have been rotated at a 90° angle to fit the fabric width. If you are working with a patterned or napped fabric and you want everything in the same direction you may need some extra fabric.

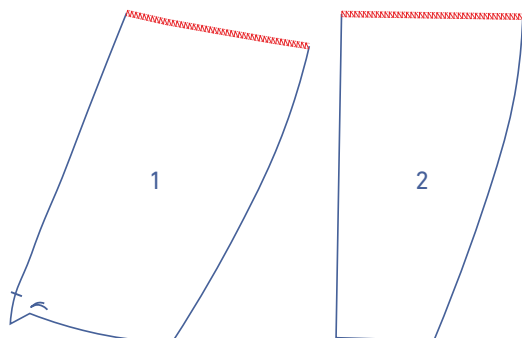
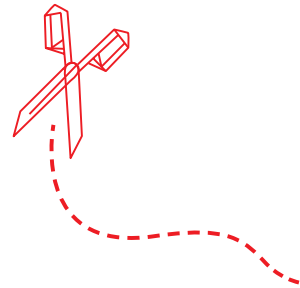
sewing instructions



The method used to finish the seams depends on the fabric used.
The pieces are always sewn together with the right sides of the fabric facing, unless stated otherwise.

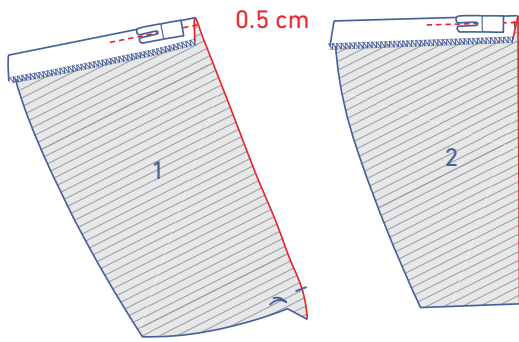


F	front
B	back
CF	centre front
CB	centre back
RF	right front 
LF	left front 
	right side
	wrong side
	elastic/elastic cord

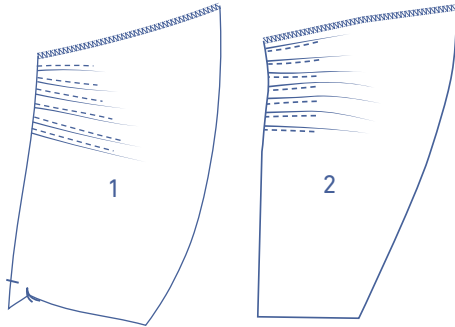


1

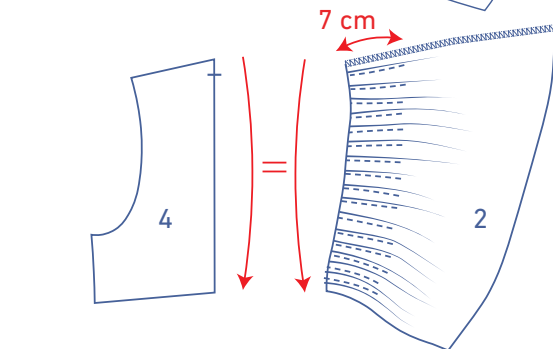
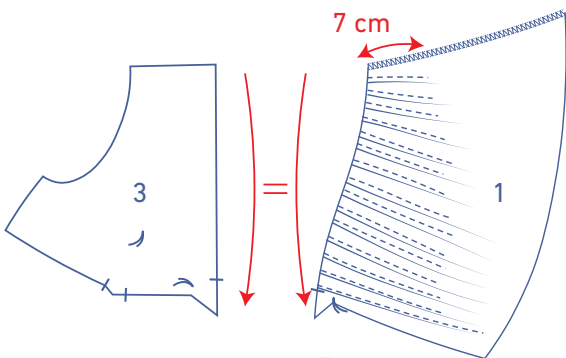
Finish the raw edges of the front (1) and back (2) pieces with overlock stitching where indicated.



Sew tiny pleats evenly across the full height of the front and back pieces. To do this, fold each piece with the wrong sides of the fabric touching. Sew the pleats parallel to the fold line, at approx. 0.5 cm from the fold line.



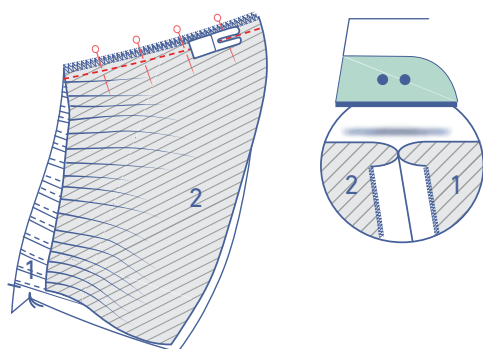
Repeat this step until the neckline length of the front pieces matches those of the bodice front (3). The same should be true of the back pieces and those of the bodice back (4). The pleat length on the bottom of the front should nearly be equal to the width of the front piece. The pleat length should gradually decrease towards the shoulder seam, where your final pleat should be approx. 7 cm long. Repeat for the back, applying the same measurements.



TIP

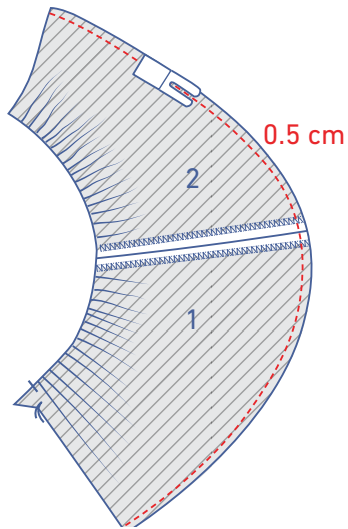
The table below gives an indication of the number of pleats per size. Please note that these numbers only serve as a guideline.

	4	6	8	10	12	14	16	18	20	22	24	26	28	30	32
F	20	20	21	21	22	22	23	23	24	25	26	27	28	29	30
B	22	22	23	23	23	24	24	24	24	25	25	25	26	26	26

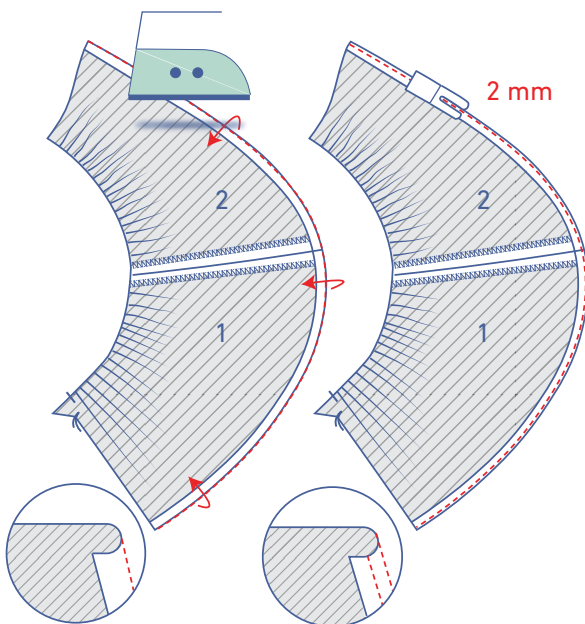


Pin and sew the shoulder seams together. Press the seam allowance open.

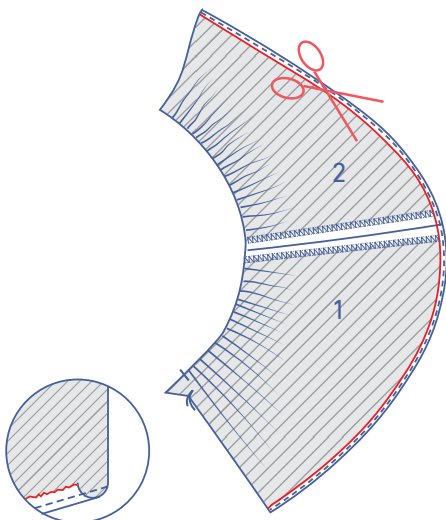
Finish the side of the front and back as follows: sew together at 0.5 cm from the indicated raw edge.



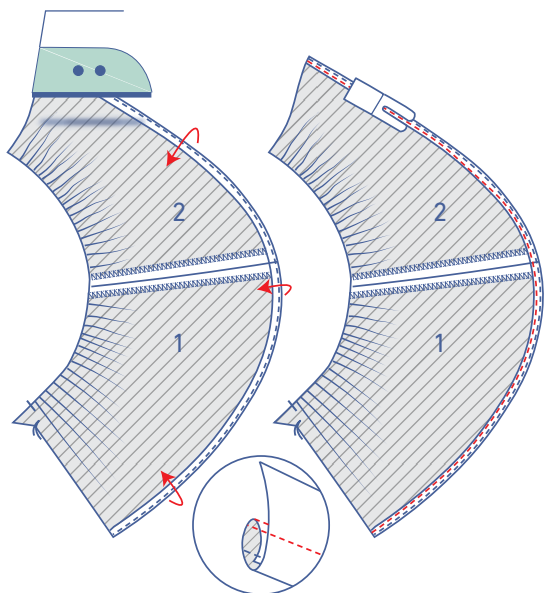
Next, press over at the stitching and sew the pressed seam allowance into place at 2 mm from the edge.



Trim the excess seam allowance (applique scissors are useful here if you have them).

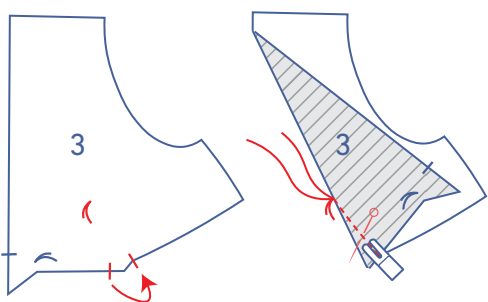


Now, for the last time, fold the edge towards the wrong side and sew into place. Neatly press along the wrong side.

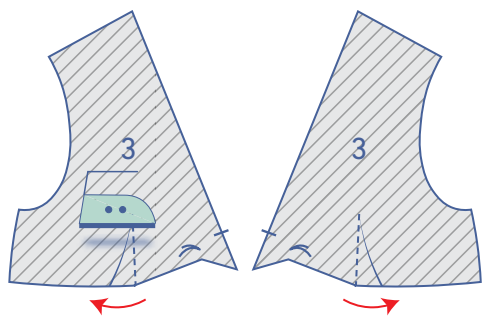


2

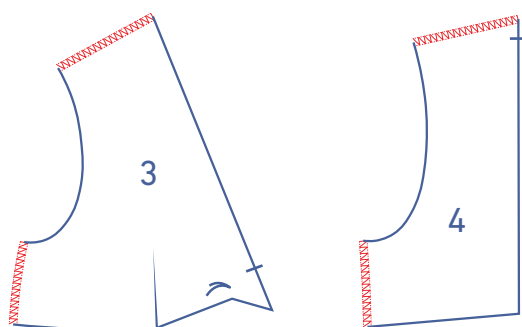
Fold the bottom of the bodice front (1) pieces together with the right sides of the fabric touching, matching notches. Sew each dart in a slightly curved line towards the marking thread. Sew up to and just past the marking thread, so that you've sewn past the fabric. Snip the threads and tie a knot.



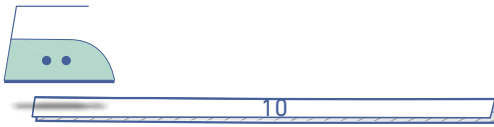
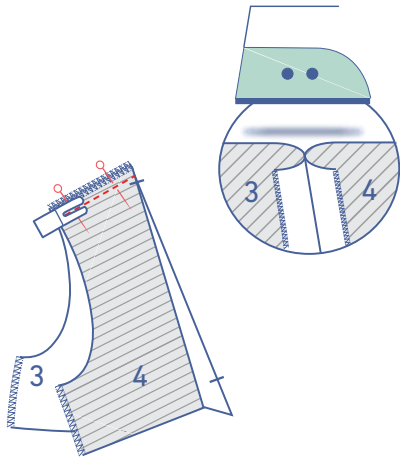
Turn the bodice front pieces over so that the right side is facing down. Press each dart towards the side seam.



Finish the raw edges of the front and back bodice pieces with overlock stitching where indicated.

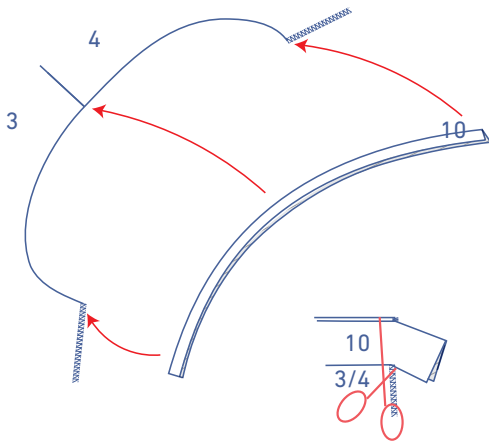


Pin the shoulder seams of the bodice together and sew.
Press the seam allowance open.



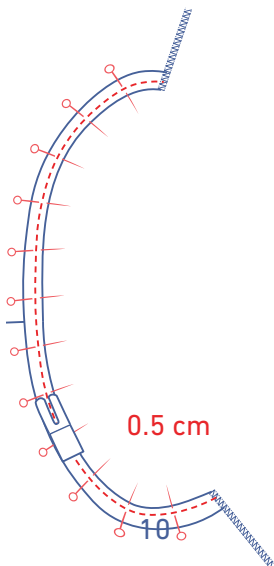
3

Press the armhole bias tape (10) in half with the long ends together and the wrong sides of the fabric facing each other.

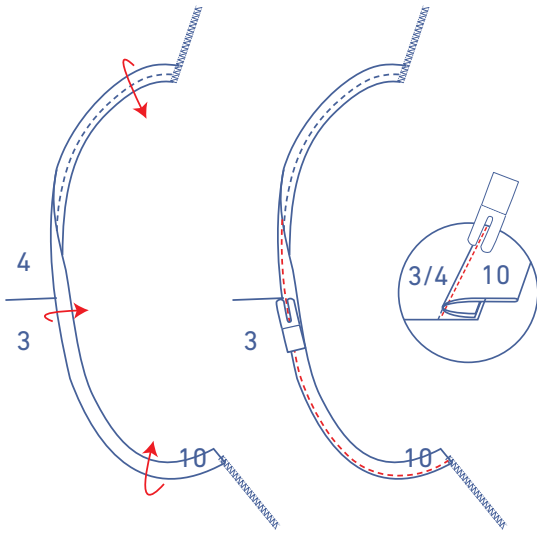


Pin the raw edges all along the bodice armhole. Trim any excess bias tape (the precise tape length is not given because the grainline is on the bias, i.e. it will differ according to the fabric type).

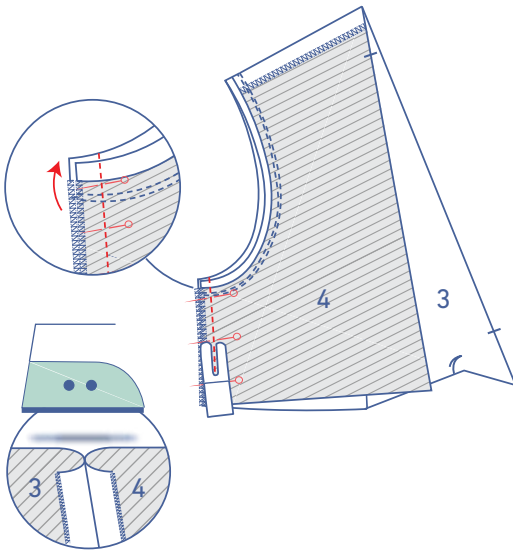
Sew into place at 0.5 cm.



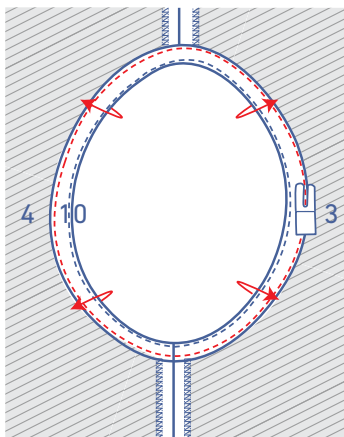
Fold the bias tape over and sew the bias tape right next to the seam, anchoring through all layers.

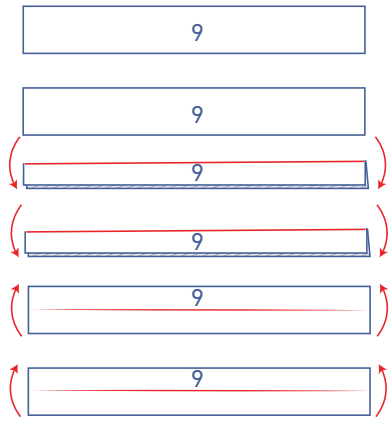


Pin and sew the side seams together (with the bias tape opened out). Press the seam allowance open.



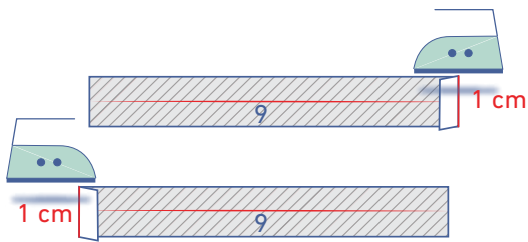
Fold the bias tape towards the wrong side all the way around and sew into place right next to the fold line.



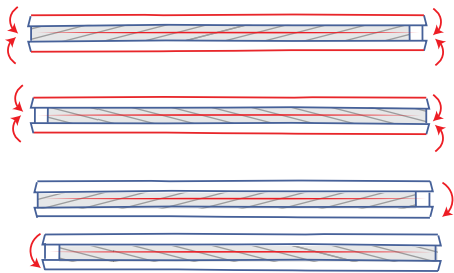


4

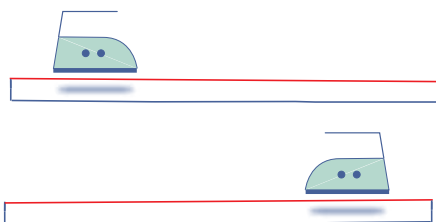
Press the ties (9) in half with the long ends together and the wrong sides of the fabric facing each other. Open back out.



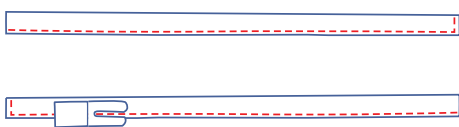
Press one short end of each tie 1 cm towards the wrong side.



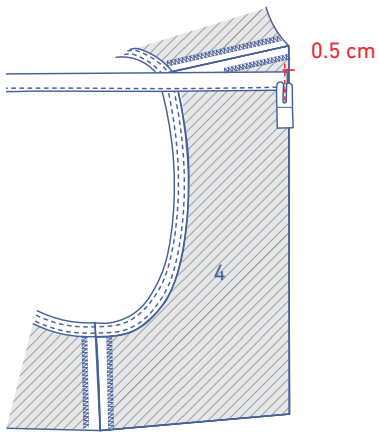
Then, press the long ends in to the pressed centre line.



Now, fold back in half along the pressed centre line and press.



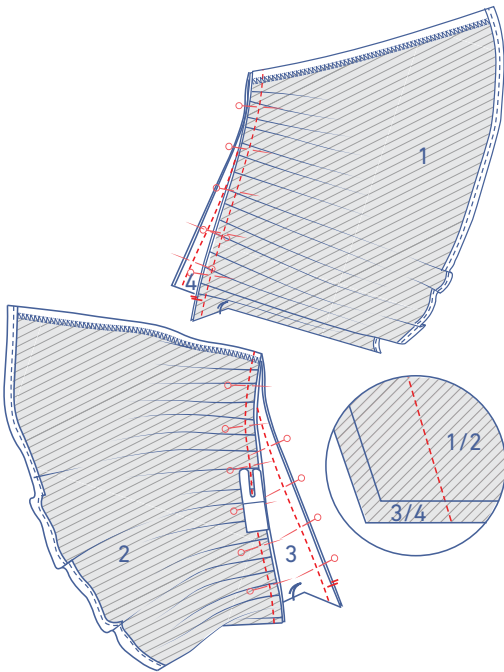
Edgestitch the ends where indicated.



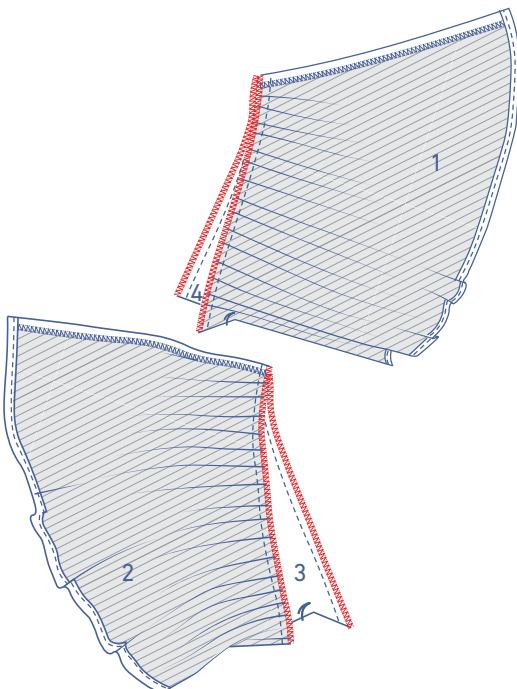
Pin the short, unfinished ends of the ties to the single notches in the neckline of the bodice back pieces along the wrong side. Sew into place at 0.5 cm from the raw edge.

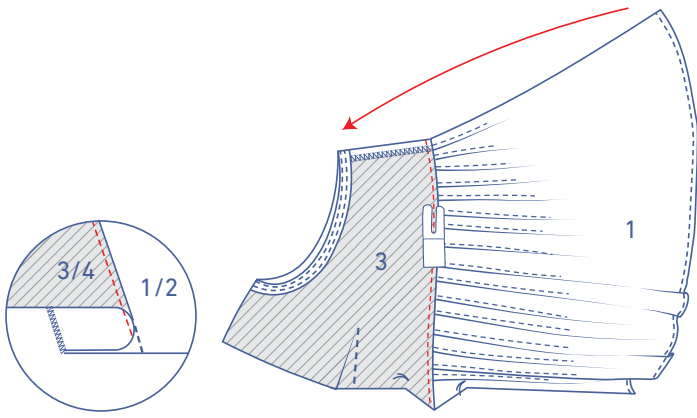
5

Pin and sew the wrong side of the neckline of each bodice piece to the right side of the front and back. The tie should be sandwiched between the different layers of fabric.

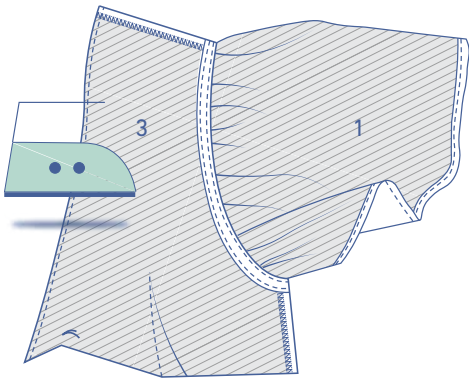


Finish the raw edges with overlock stitching.

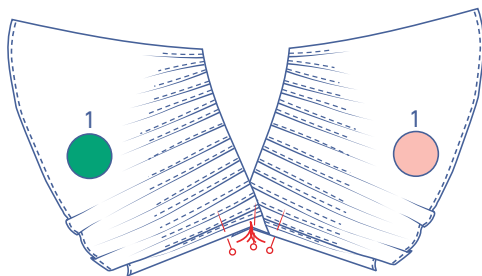




Fold the bodice over and sew to the seam allowance underneath, anchoring it right next to the seam.

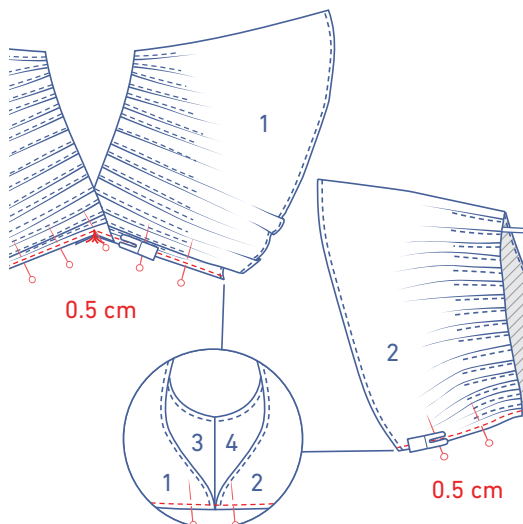


Neatly press the bodice towards the wrong side all the way around.

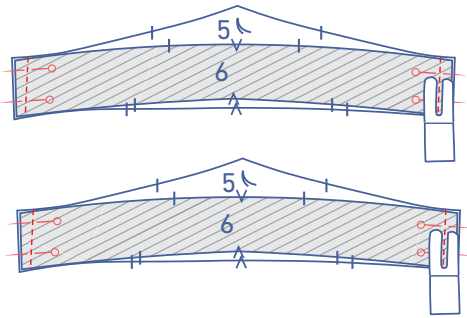


6

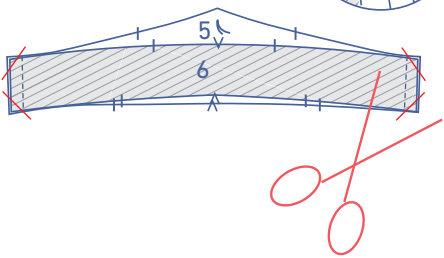
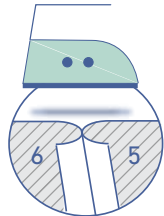
Pin the RF to the LF, matching the marking threads.



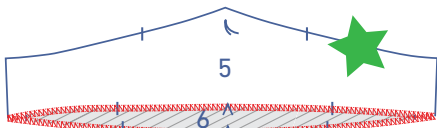
Pin and sew the bodice to the front and back all the way around at 0.5 cm from the raw edge. The finished edges of the front and back should line up with the side seams of the bodice.



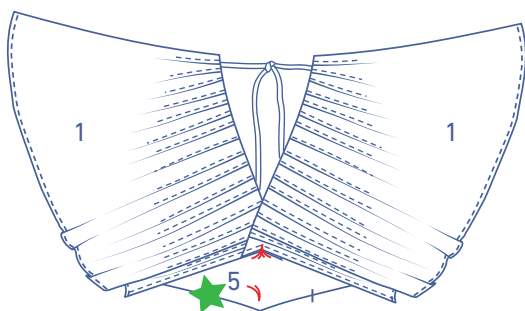
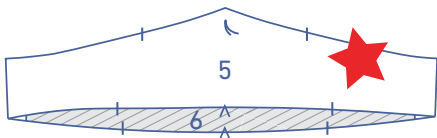
Make two waistbands. Pin and sew the side seams of the waistband front (5) and waistband back (6) together.



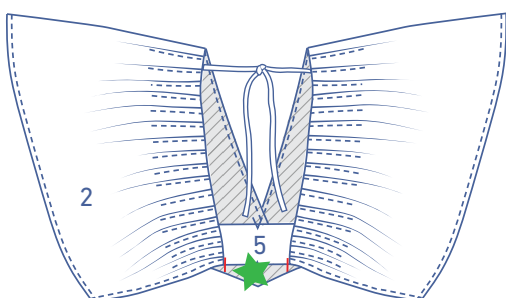
Diagonally clip the seam allowance at the tips to prevent bunching. Press the seam allowance open.

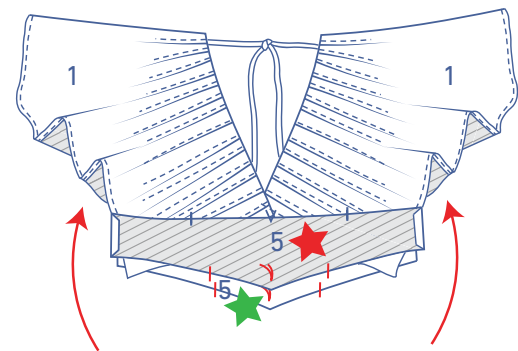


Finish the bottom of one of the waistbands with overlock stitching. We marked this waistband with a green star.

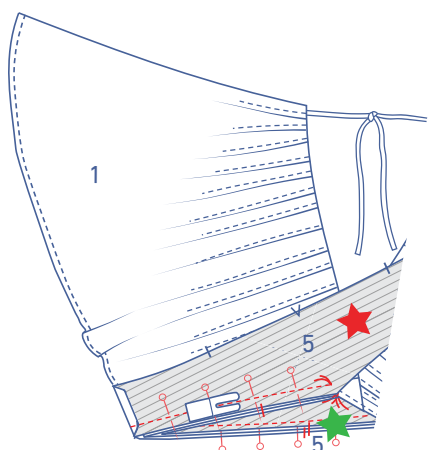
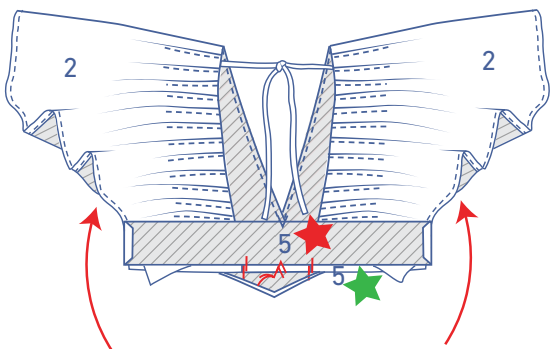


Place the garment in front of you with the back facing up and slide the green star waistband into the garment so that the unoverlocked bottom matches the bottom of the garment.

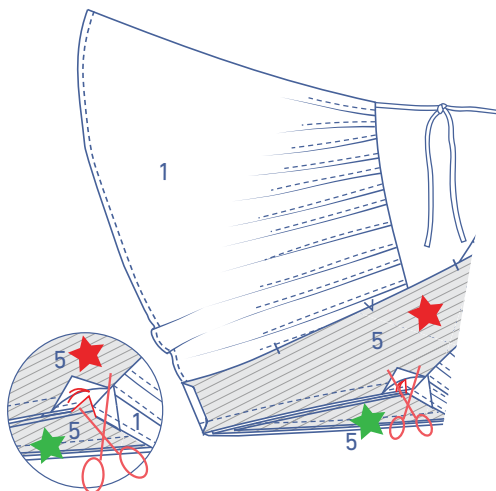




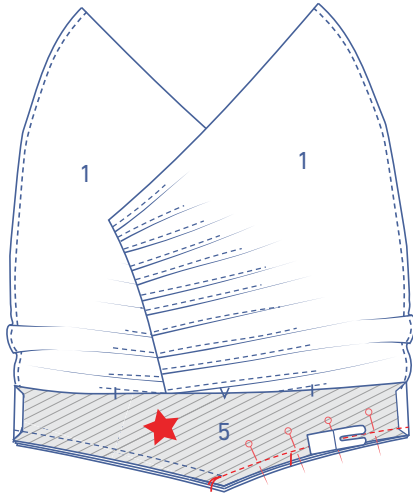
Now, slide the red star waistband over the garment so that the right sides are touching and marking threads are matching.



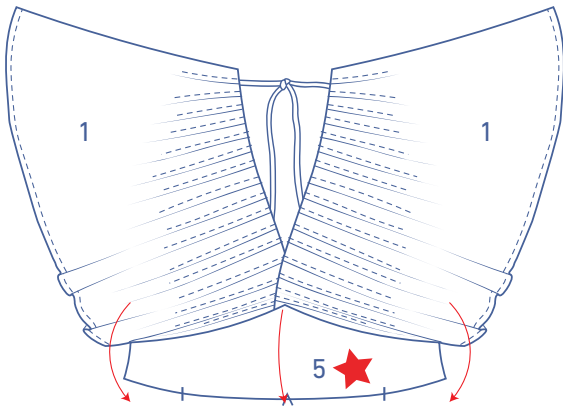
Pin the pieces together with the seams and markings matching. The single notch in the waistband front should match the bodice dart. The single notches in the waistband back should line up with the finished edge of the back. Sew into place right up to the marking threads, leaving your needle down.



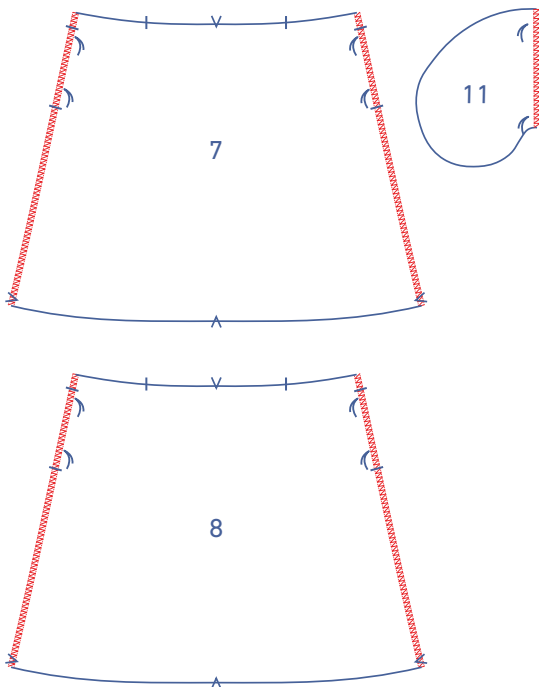
With your needle in the fabric, raise the presser foot, fold the seam allowance of the waistband over and snip into the seam allowance of the front and bodice just up to the marking thread.



Pivot the garment, lower the presser foot back down and sew the remainder of the seam.

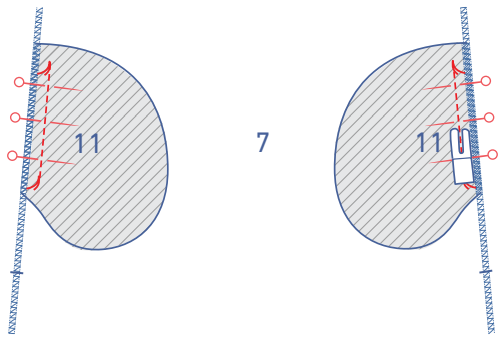


Open the red star waistband back out.

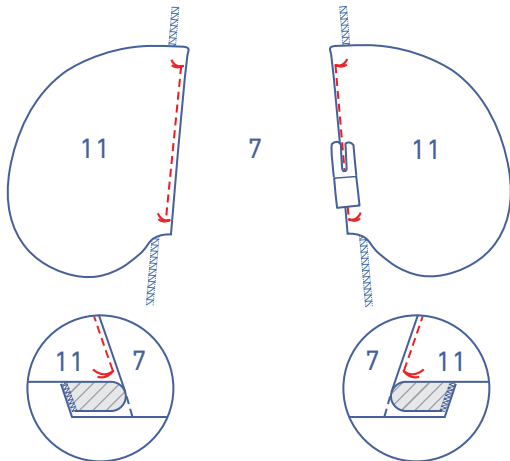


7

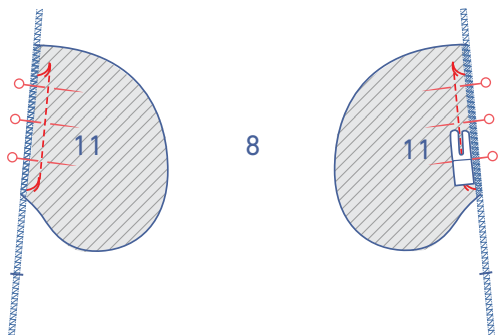
Finish the sides of the skirt front (7) and skirt back (8) pieces and the straight ends of the pocket pieces (11) with overlock stitching.



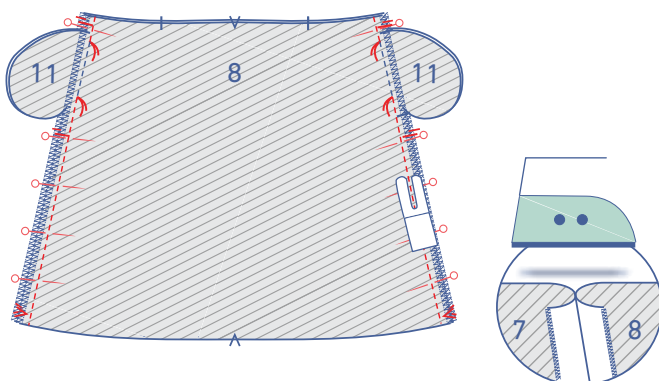
Pin the straight ends of two of the four pocket pieces to the skirt front, matching the marking threads. Sew into place between the marking threads.



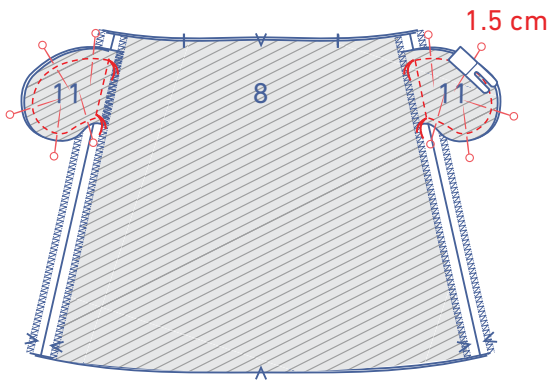
Fold the pocket and seam allowance over and sew the pocket to the seam allowance underneath.



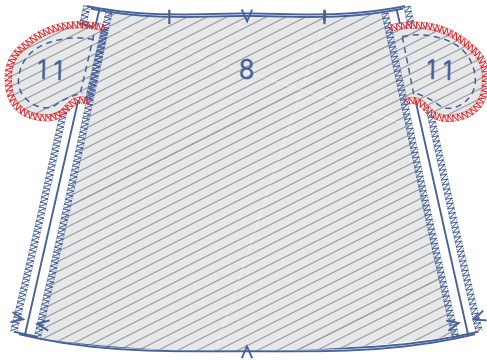
Pin the straight ends of the two remaining pocket pieces to the skirt back, matching the marking threads. Sew into place between the marking threads. Fold the pocket pieces over.



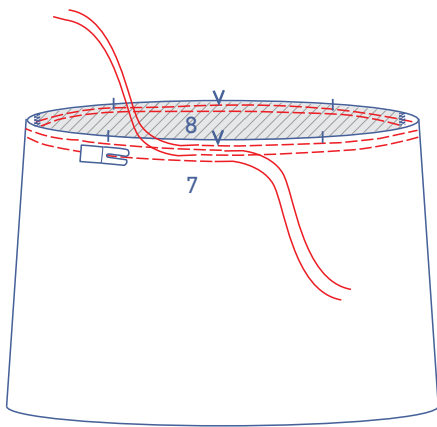
Pin and sew the side seams from the waist up to the marking thread that marks the top of the pocket. Then, sew from the next marking thread down to the hem. Flip the seam allowance of the pocket pieces over so that you can properly sew up to the marking threads. Press the seam allowance open.



Pin and sew the contours of the pocket pieces together at 1.5 cm.

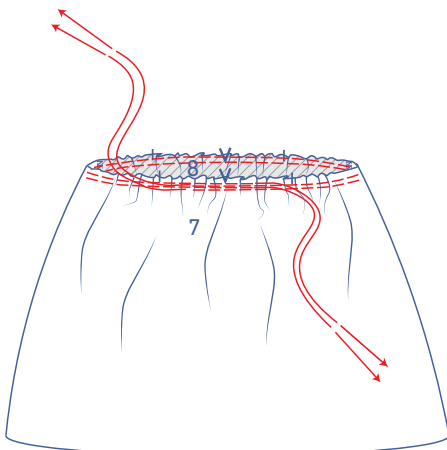


Finish the raw edges with overlock stitching.

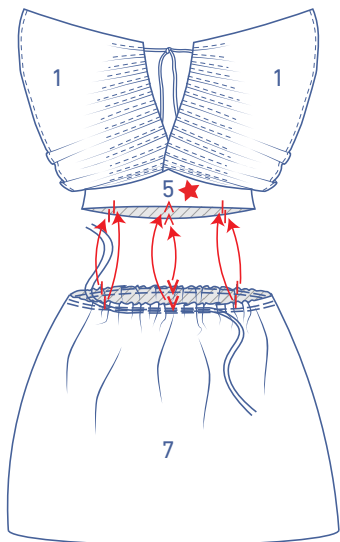


8

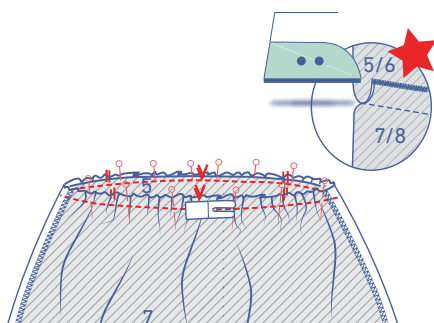
Sew the top of the skirt with two parallel lines of topstitching, using a long stitch length at a low thread tension. Leave a length of thread at the start and end of the stitching.



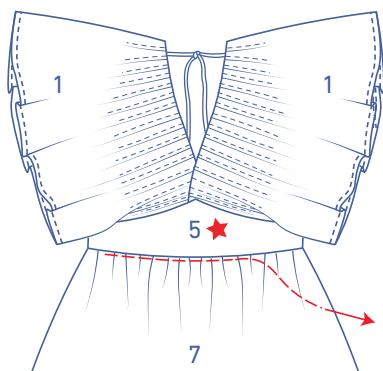
Gently tug the ends of the threads to gather the fabric.



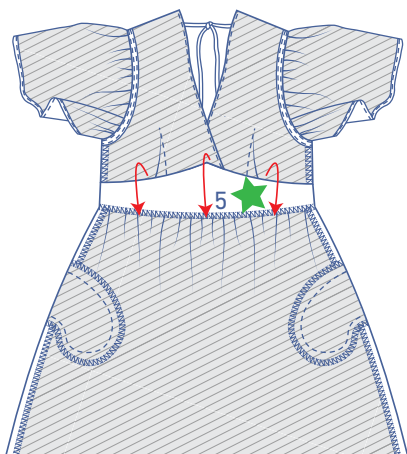
Slide the top of the skirt to the bottom of the red star waistband right sides together and pin. Distribute the gathers until the notches match and



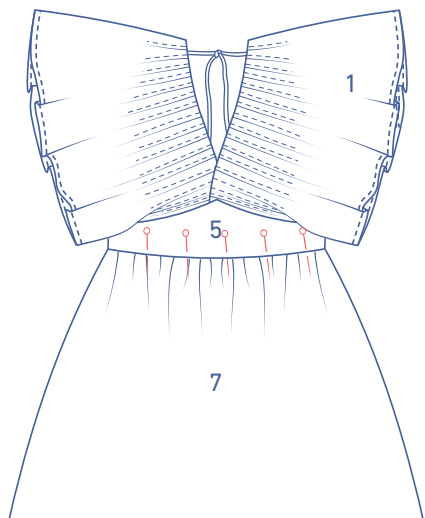
sew into place. Press the seam allowance up towards the waistband.



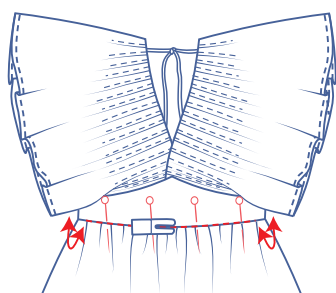
Remove the gathering threads.



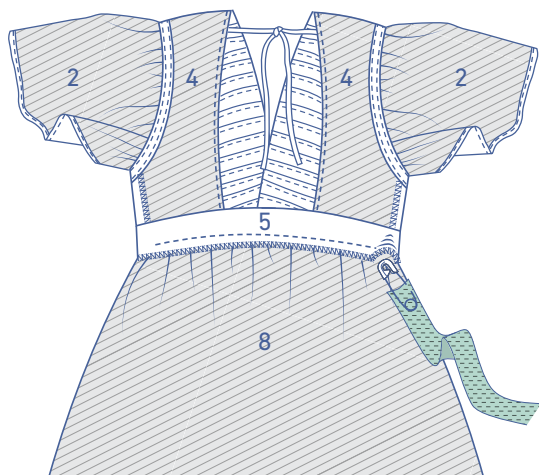
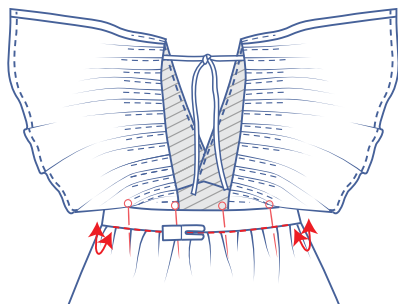
Now, fold the green star waistband down.



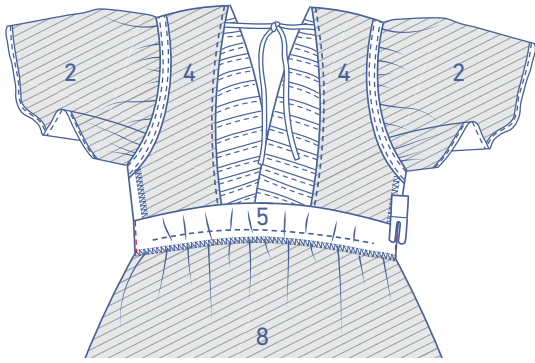
Pin the waistbands together along the right side of the garment.



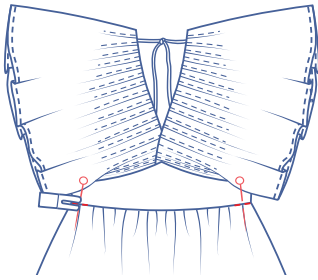
Stitch in the ditch, leaving two openings in the side seams through which to thread the elastic later.



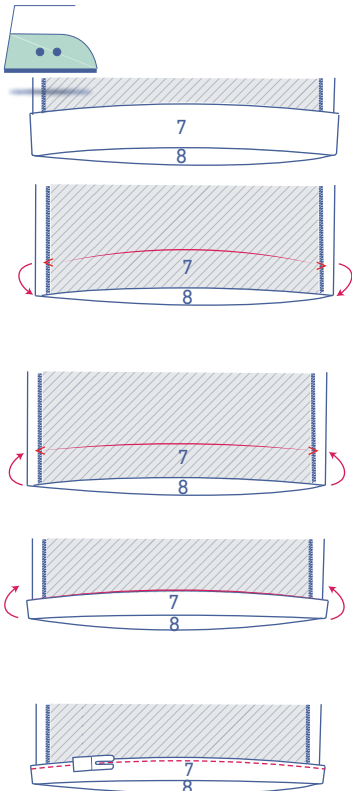
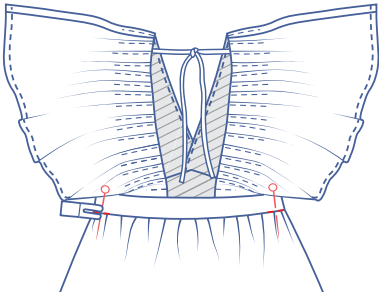
Thread the elastic through the casing in the back.



Sew each end of the elastic into place at the side seams.



Sew the remainder of the waistband by stitching in the ditch.



9

Press the hem allowance over at the V notches and then open back out.

Match the raw edge to the pressed fold line and turn up again.

Edgestitch into place.