

Lia by Fibre ood

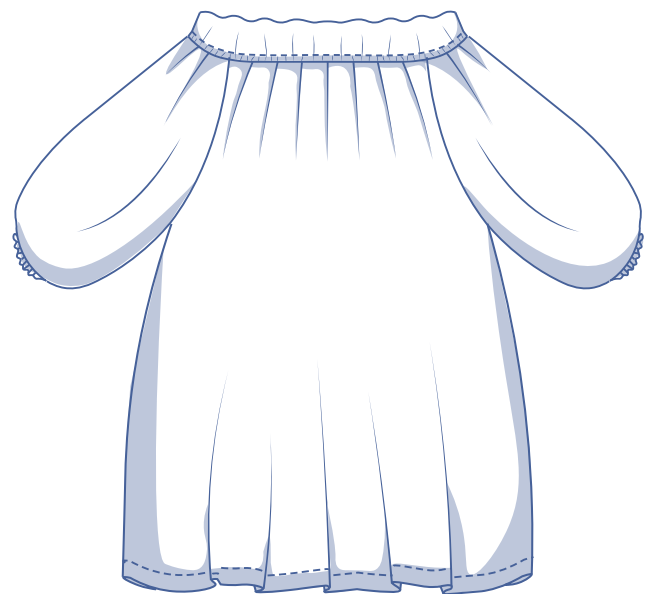
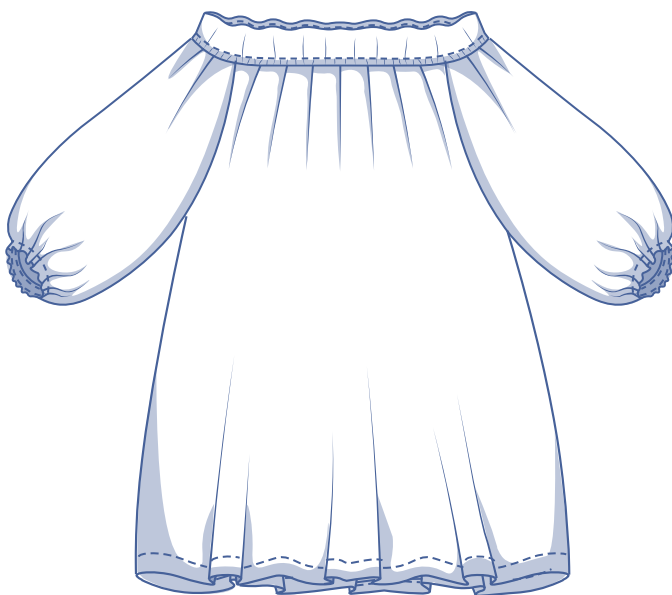
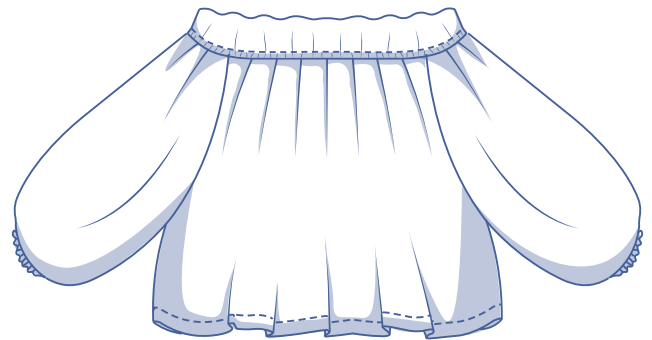
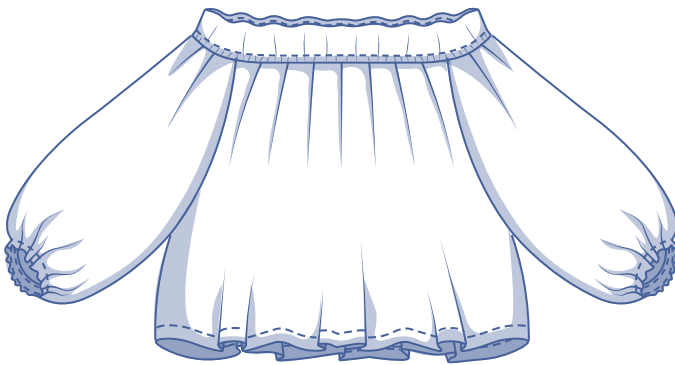


Lia by Fibre Mood



XS - XXXL

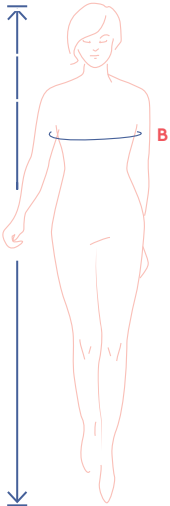
What says summer better than bare shoulders? Well, Lia has got those bases (un!)covered. This unique off-the-shoulder top is tastefully tailored above the bust and gracefully fans out underneath. The knife pleats add fullness to the top, and the statement sleeves have a curved hemline. That curve leads to a sleeve that's shorter at the front than at the underarm seam. Bring on the sunshine!



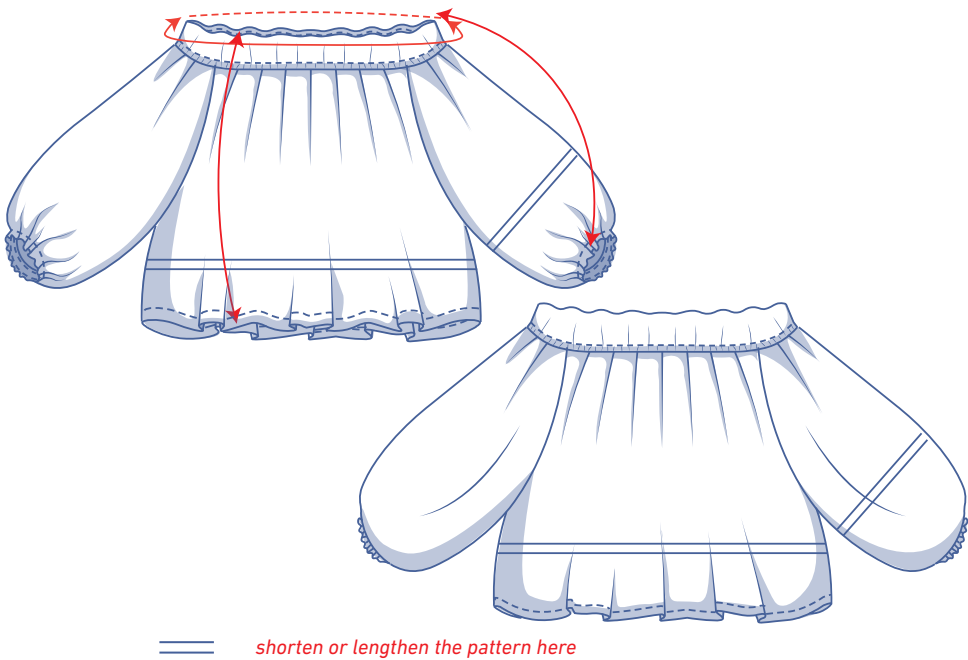
size chart (in cm)

size	XS		S		M		L		XL		XXL		XXXL		
	4	6	8	10	12	14	16	18	20	22	24	26	28	30	32
body height	160	164	166	167	168	169	170	171	172	172	172	172	172	172	172
B (bust)	76	80	84	88	92	96	100	104	110	116	122	128	134	140	146

The size chart above is for reference; you should choose your size based on the measurement of the top of the trim (see pattern measurements table below). This size includes the measurement of your high bust *and* arms. Pick the size that matches this measurement best. Second, see which size (based on the table above) matches your full bust measurement best. Do you end up with two different sizes? When tracing your pattern pieces, simply trace from the line of one size to the other.



pattern measurements (in cm)



This chart's measurements are the pattern measurements based on the fabric type and serve as a reference. Ease has been added to the width measurements (on top of the exact body measurements) for a more comfortable fit. Lia is designed to be (= fitted at the trim and drape loosely over the bust). You can go a size smaller or larger based on your preferred fit.

size	XS	S	M	L	XL	XXL	XXXL
top length	47	48.5	50.25	52	55.25	57.25	59.5
dress length*	91	92	93	95	98.5	101	102.25
top of trim	74.25	81.5	88.75	96	103.25	112.75	122.25
sleeve length	54.25	54	53.75	53.5	53.25	52.75	52.5

* To make the Lia dress, lengthen pattern pieces 1 and 2 to this measurement.

Compare the stated lengths to the measured or desired lengths. Lengthen or shorten the top and/or the sleeves by cutting the pattern pieces at the indicated double lines. Then either increase the distance between the cut pieces by the desired amount (to lengthen) or overlap the pieces (to shorten). Make sure that the CF and CB lines and the side seams are always straight.



IMPORTANT

Adjust the amount of fabric to be used based on these alterations.

notions



- Thread
- Elastic* (width 0.5 cm): see table
- Fabric: see table

elastic		XS	S	M	L	XL	XXL	XXXL
trim length	cm	76	82	89	95	101	107	113
length per sleeve hem	cm	24	25	26	27	28	29	30
total length	cm	124	132	141	149	157	165	173

* The measurements stated (including overlap) for the elastic are only a suggestion and depend on the type of elastic. Take your measurements first with the elastic you want to use to determine the exact length. Always add 3 cm of overlap to your measurements.

fabric use top		XS	S	M	L	XL	XXL	XXXL
fabric width 110 cm	cm	280	285	310	320	335	350	375
fabric width 140 cm	cm	215	225	280	290	300	310	345

The corresponding fabric layout can be found on page 6 of these sewing instructions.

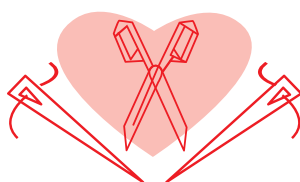
fabric use dress		XS	S	M	L	XL	XXL	XXXL
fabric width 110 cm	cm	365	375	395	405	420	440	460
fabric width 140 cm	cm	305	310	365	375	385	400	435

fabric advice



Lia works best in a woven fabric. If you want the top to turn out soft and swishy, select a fabric with a fluid drape (e.g. silk satin, double gauze, viscose crepe, or muslin). A more structured fabric such as poplin or batiste will result in a more statement top.

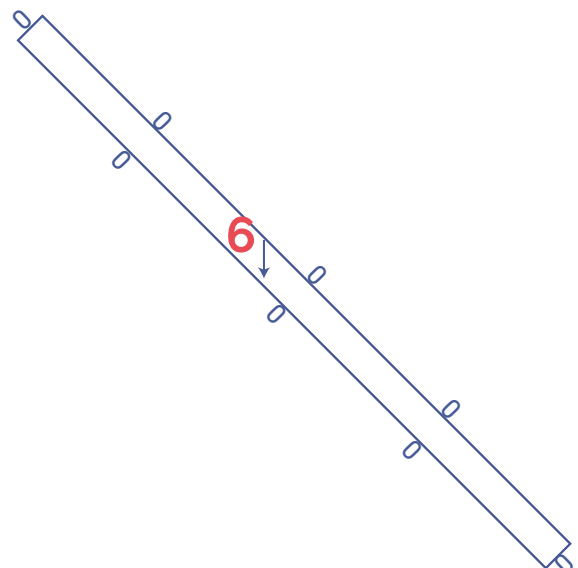
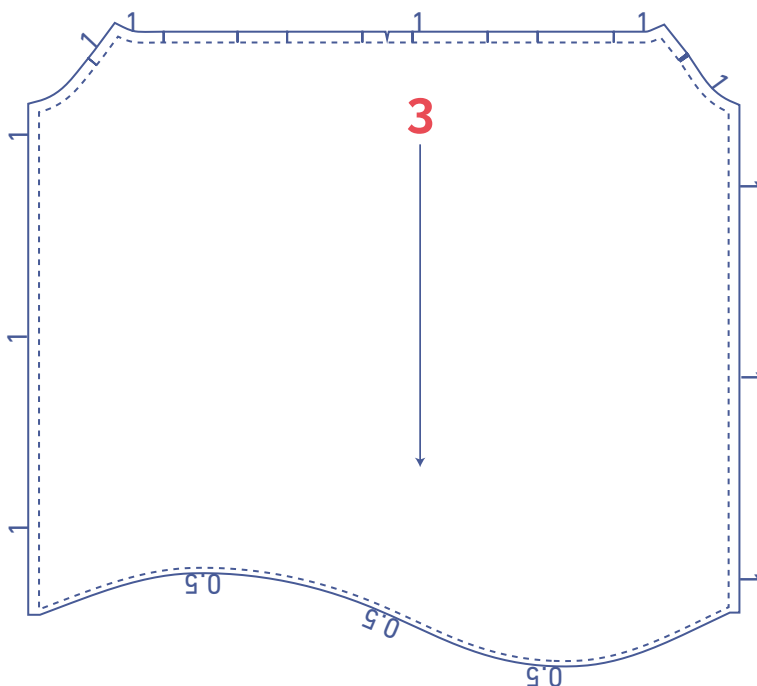
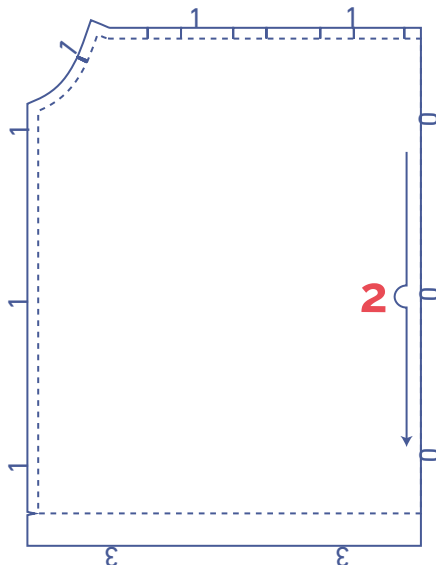
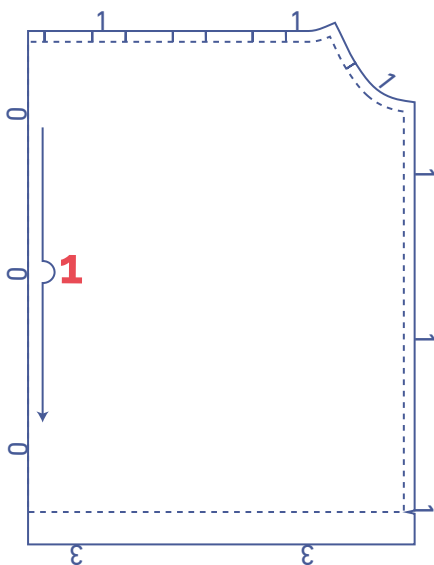
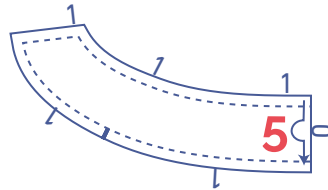
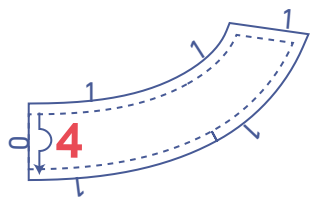
Proud to be #Sewista



pattern pieces & seam allowances (in cm)

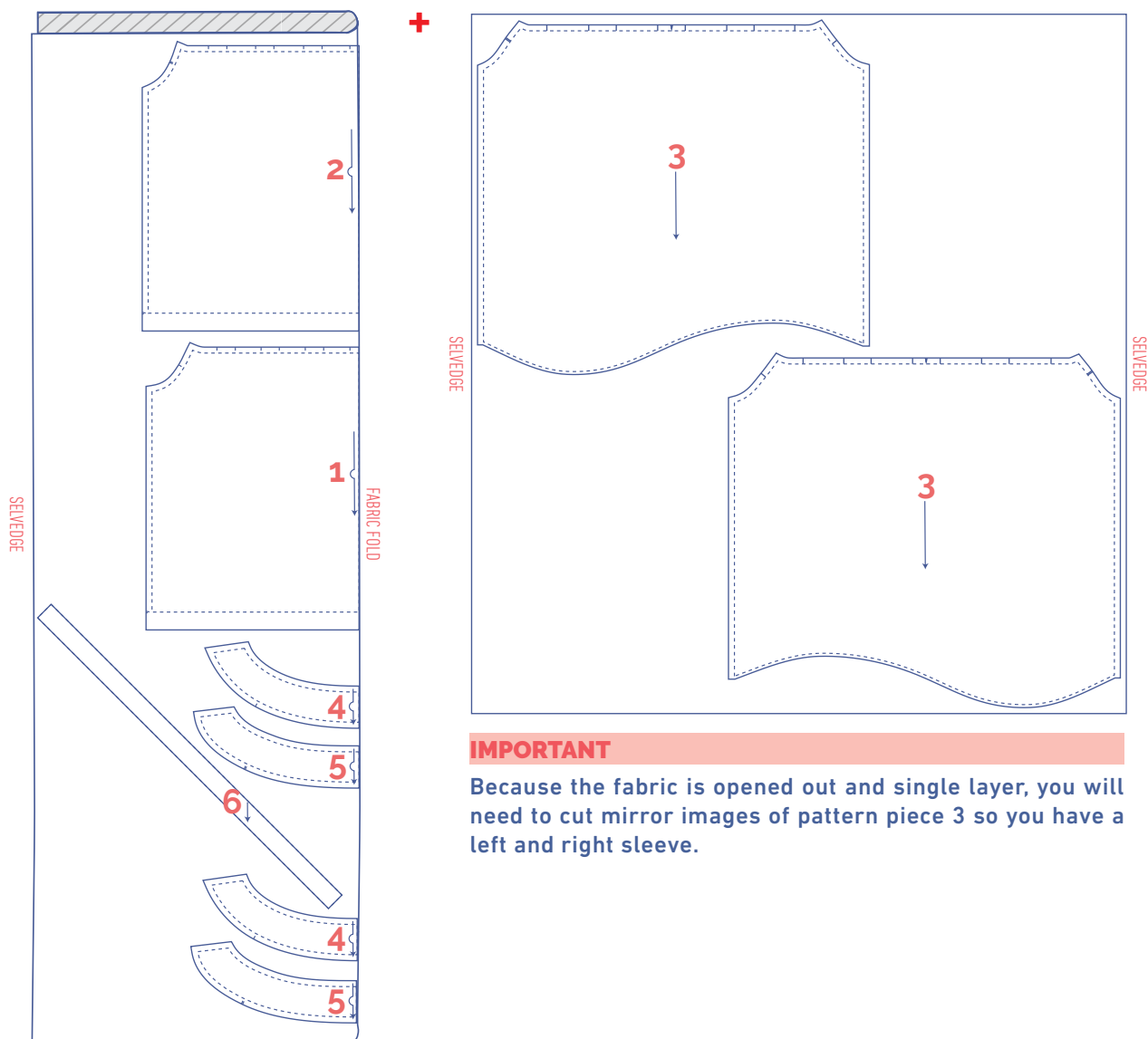
To sew the garment as described in the instructions, draw the illustrated seam allowances around the paper pattern pieces before cutting them out. If you are using a PDF pattern, the pattern can be printed with or without seam allowance. To find out more, watch the [video](#).

1. front: 1x on fabric fold
2. back: 1x on fabric fold
3. sleeve: 2x
4. trim front: 2x on fabric fold
5. trim back: 2x on fabric fold
6. bias tape: 2x



fabric layout – solid fabrics
fabric width 110 cm

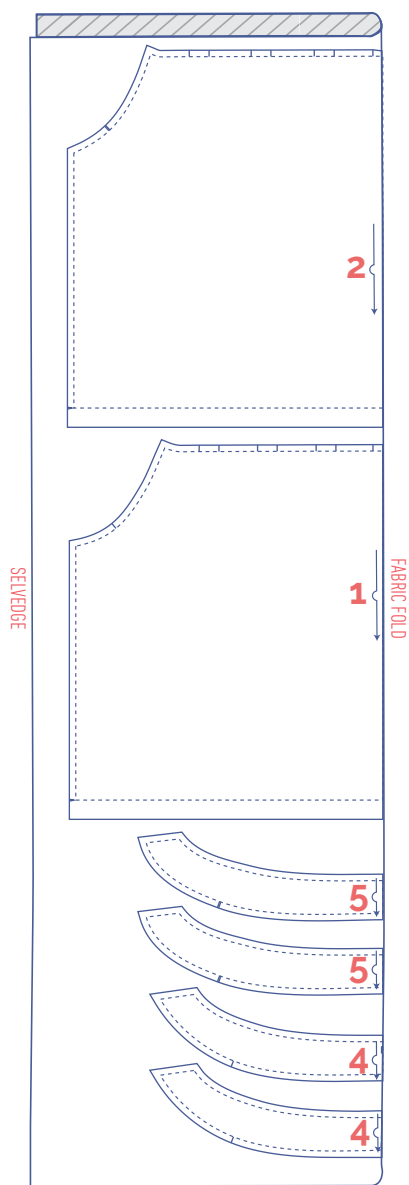
XS - S



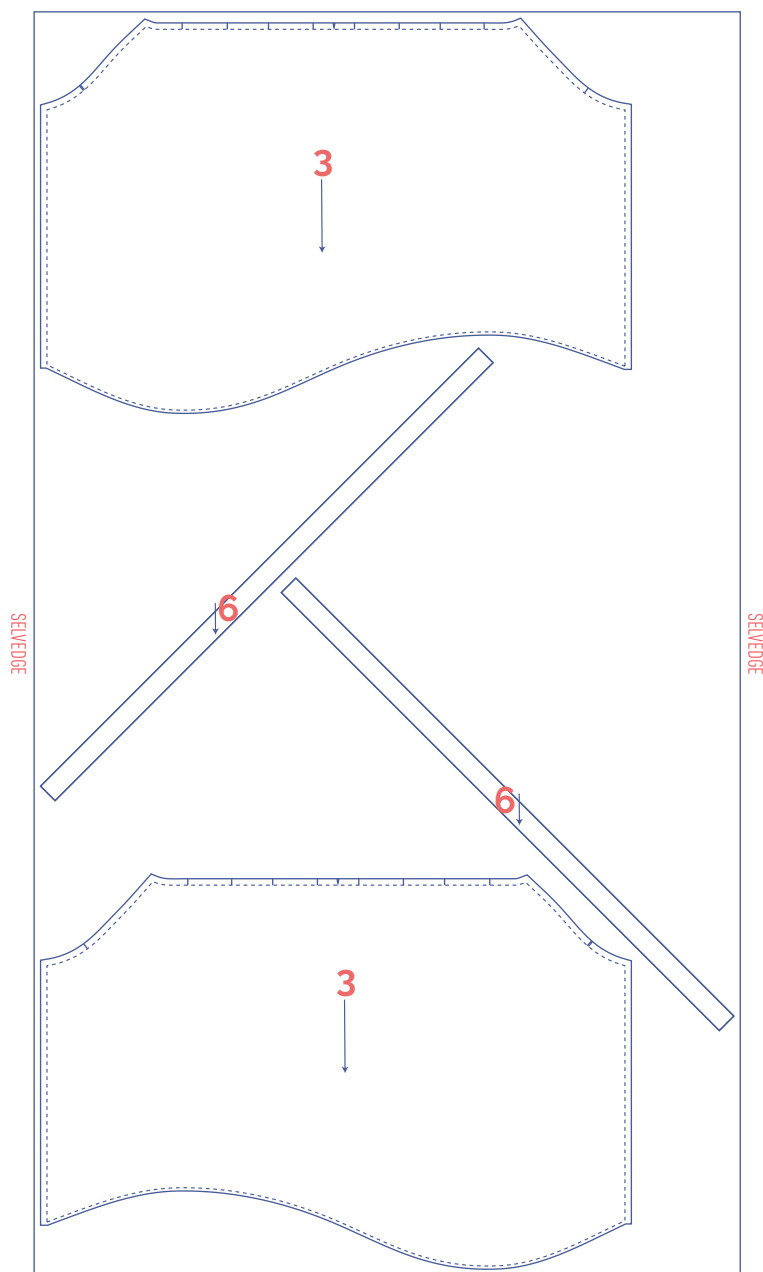
IMPORTANT

Because the fabric is opened out and single layer, you will need to cut mirror images of pattern piece 3 so you have a left and right sleeve.

M - XXXL



+



IMPORTANT

Because the fabric is opened out and single layer, you will also need to cut-to-mirror pattern piece 3. That's because you need a left and right sleeve.

marking pattern pieces



Notch the pattern paper and fabric at the following points



single notch



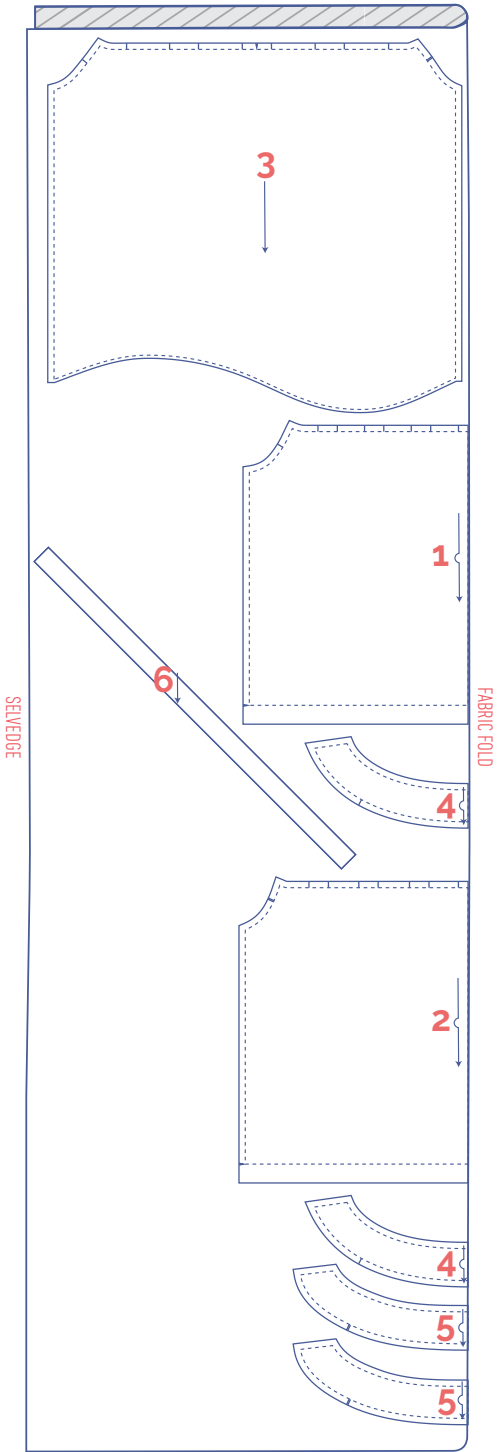
double notch

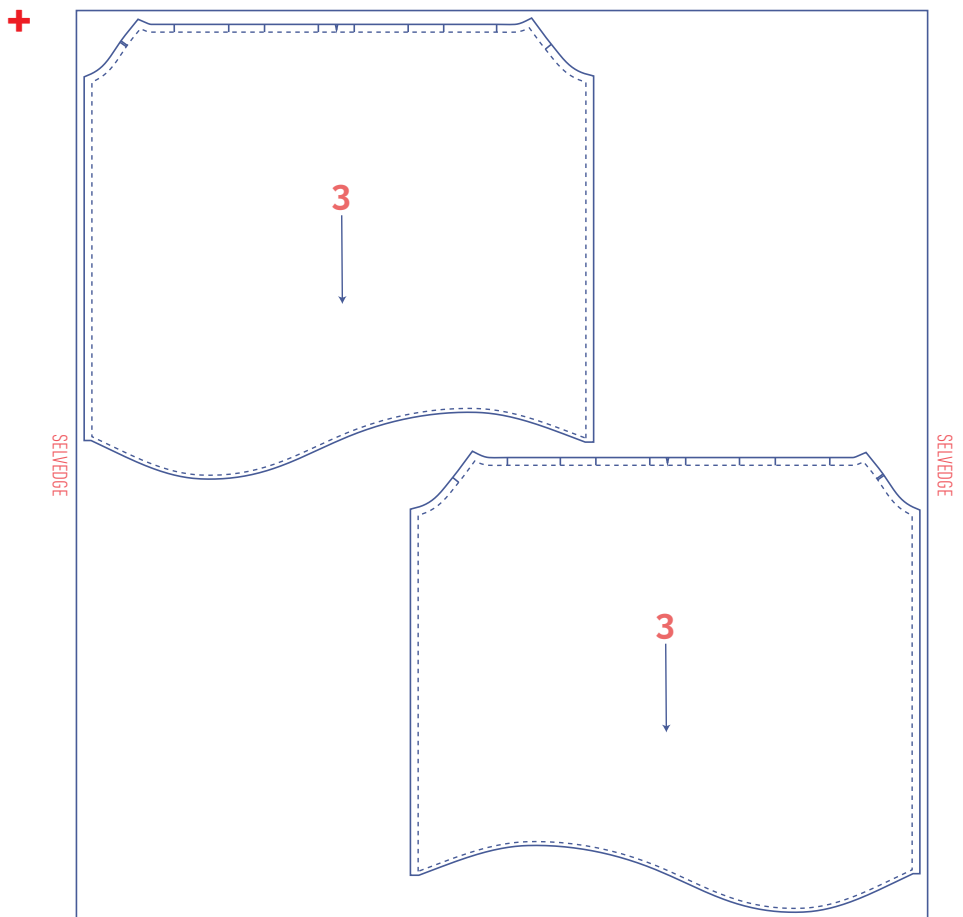
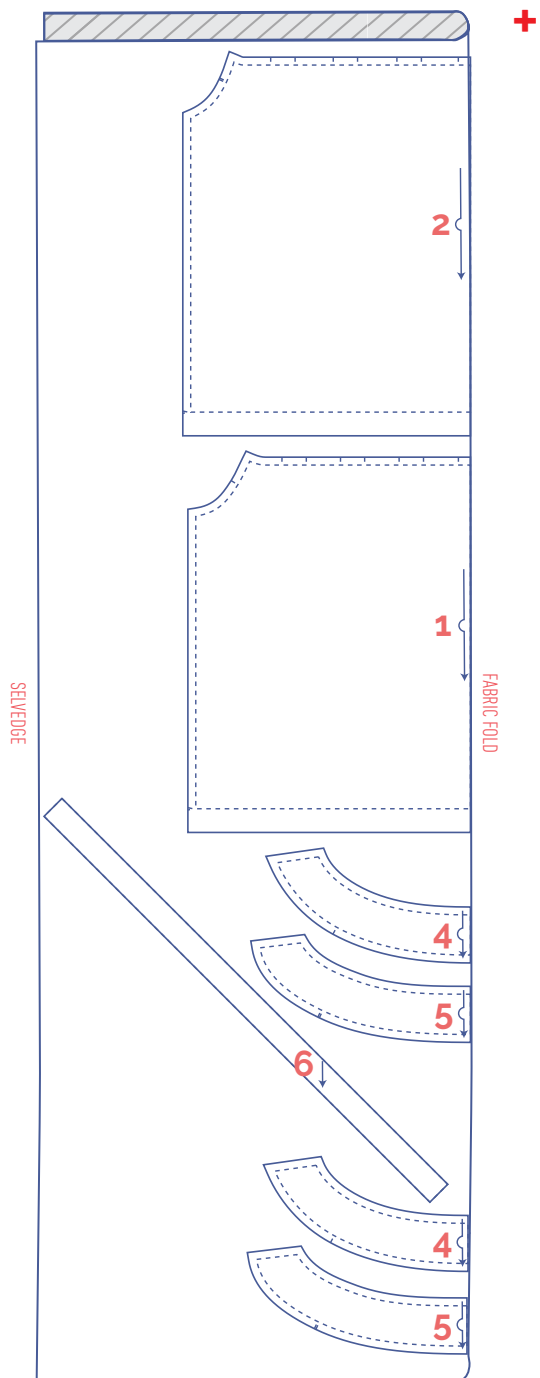


V-notch/fabric fold

fabric layout – solid fabrics
 fabric width 140 cm

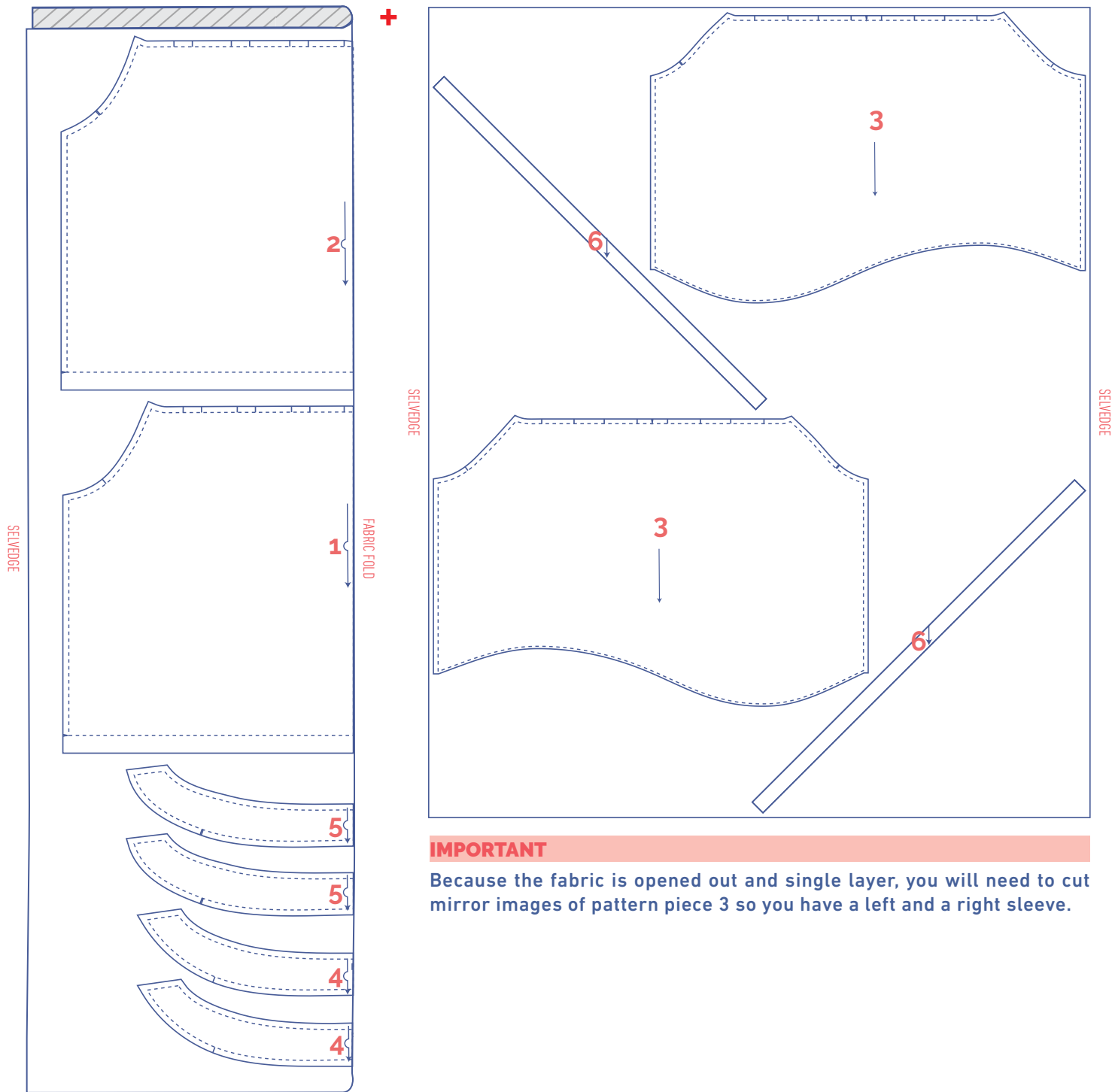
XS - S





IMPORTANT

Because the fabric is opened out and single layer, you will need to cut mirror images of pattern piece 3 so you have a left and right sleeve.



IMPORTANT

Because the fabric is opened out and single layer, you will need to cut mirror images of pattern piece 3 so you have a left and a right sleeve.

marking pattern pieces

	Notch the pattern paper and fabric at the following points
	single notch
	double notch
V	V-notch/fabric fold

sewing instructions



The method used to finish the seams depends on the fabric used.
The pieces are always sewn together with the right sides of the fabric facing, unless stated otherwise.

F front

B back

CF centre front

CB centre back

RF right front

LF left front



right side



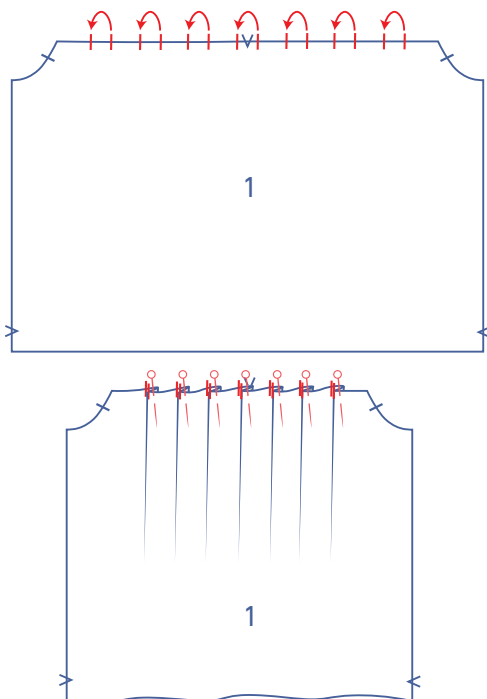
wrong side



iron-on interfacing

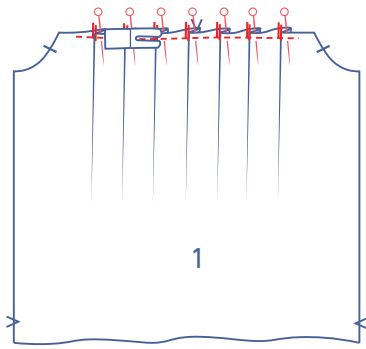


elastic

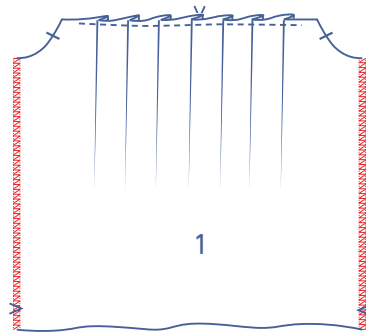


1

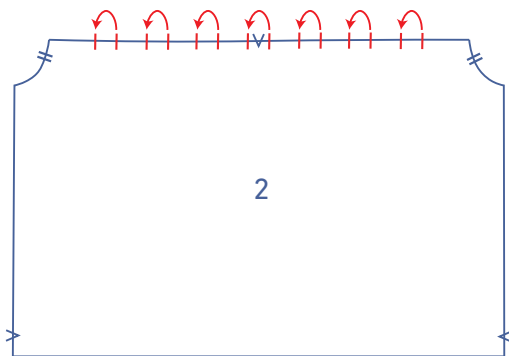
Pin the single notches at the top of the front (1) as shown, in the direction indicated and with the wrong sides of the fabric facing.



Sew the pleats into place at presser foot width from the edge.

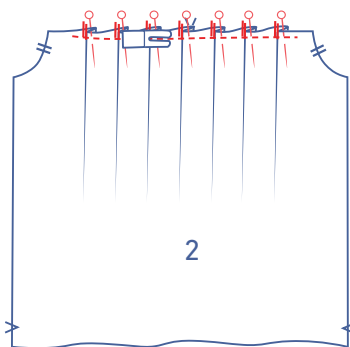
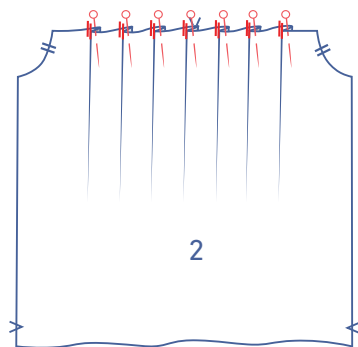


Finish the sides with overlock stitching.

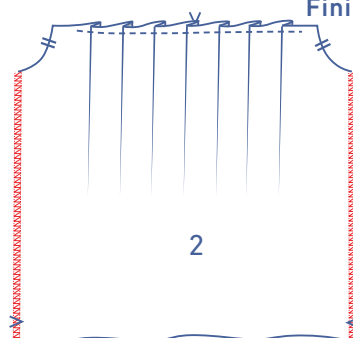


2

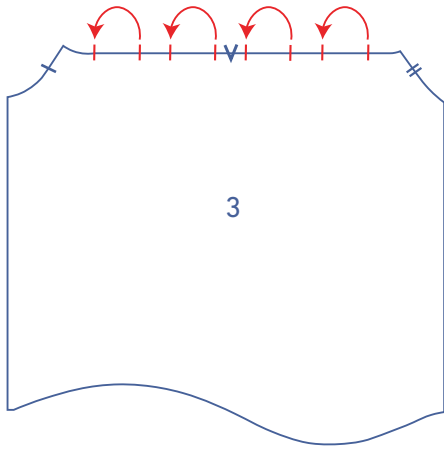
Pin the single notches at the top of the back (2) as shown, in the direction indicated and with the wrong sides of the fabric facing.



Sew the pleats into place at presser foot width from the edge.

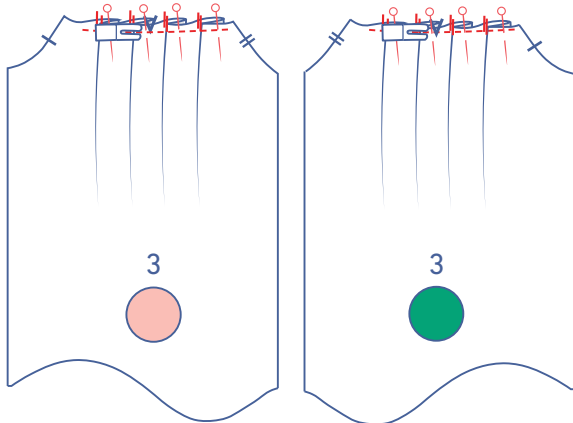
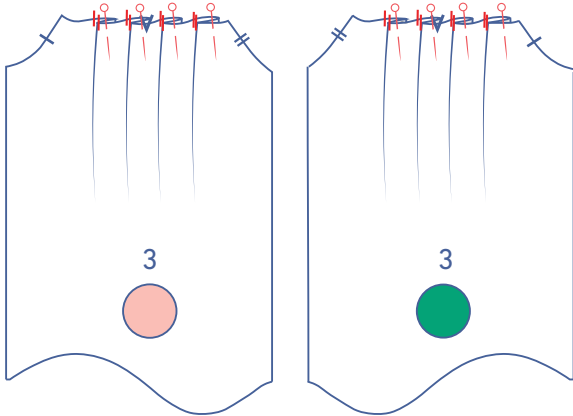


Finish the sides with overlock stitching.

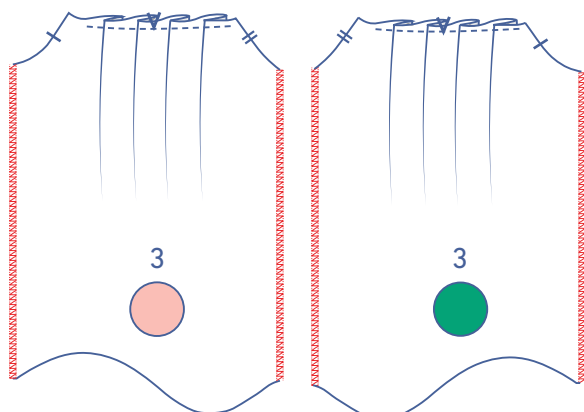


3

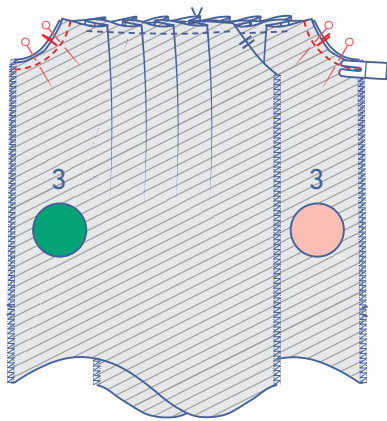
Pin the single notches at the top of the sleeves (3) as shown, in the direction indicated and with the wrong sides of the fabric facing.



Sew the pleats into place at presser foot width from the edge.

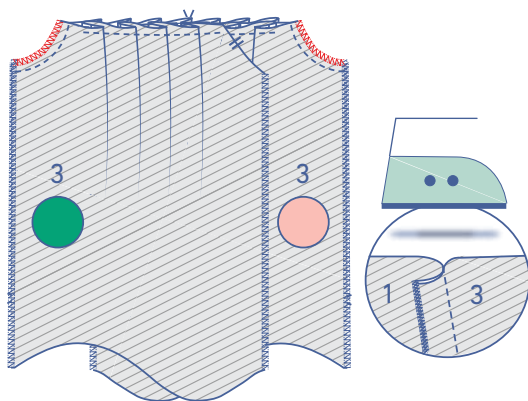


Finish the sides with overlock stitching.

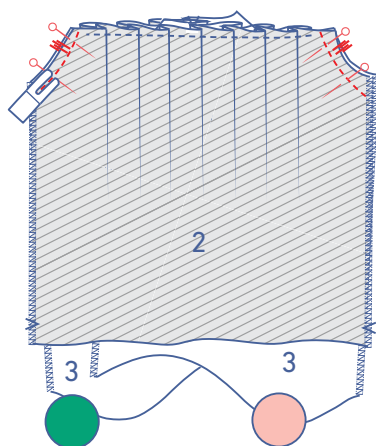


4

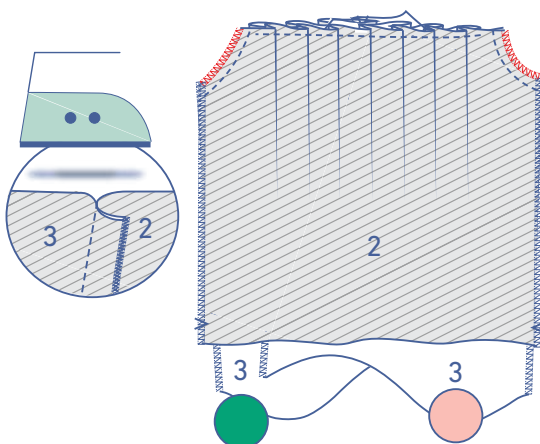
Pin and sew the end with the single sleeve notches to the front, matching the markings.



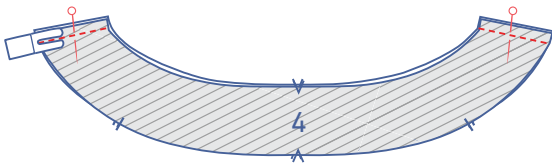
Finish the raw edges with overlocking and press the seam allowance towards the front.



Pin and sew the double notched end of the sleeve to the back, matching the markings.



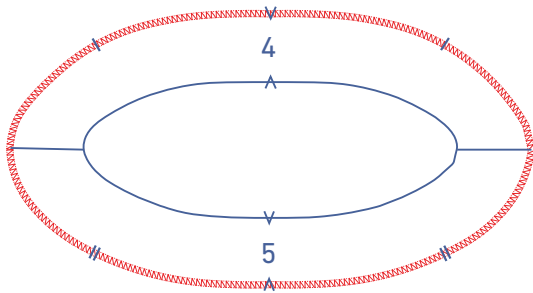
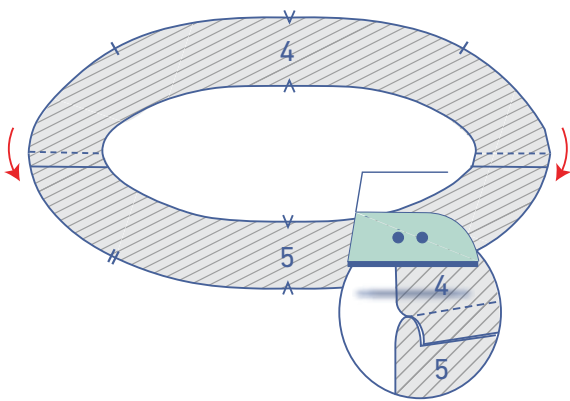
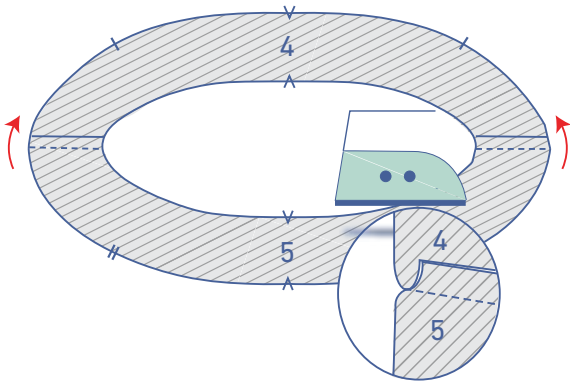
Finish the raw edges with overlocking and press the seam allowance towards the back.



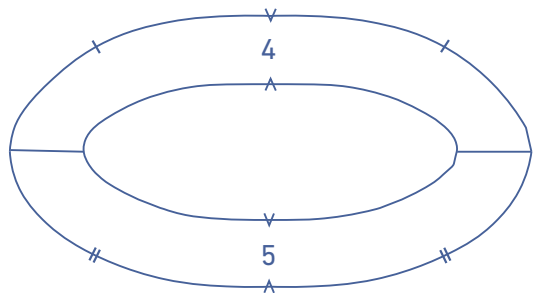
5

Pin and sew the short ends of the trim front (4) and trim back (5) together.

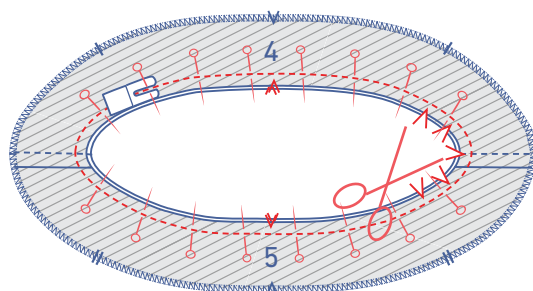
For one set, press the seam allowance towards the front trim piece; for the other, press the seam allowance towards the back trim piece.

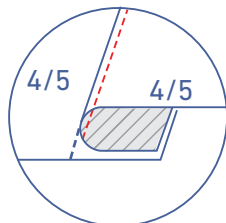
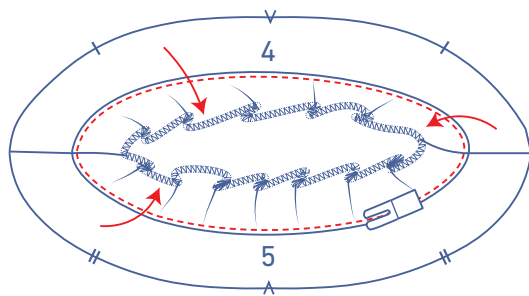


Finish the bottom of one set with overlock stitching.

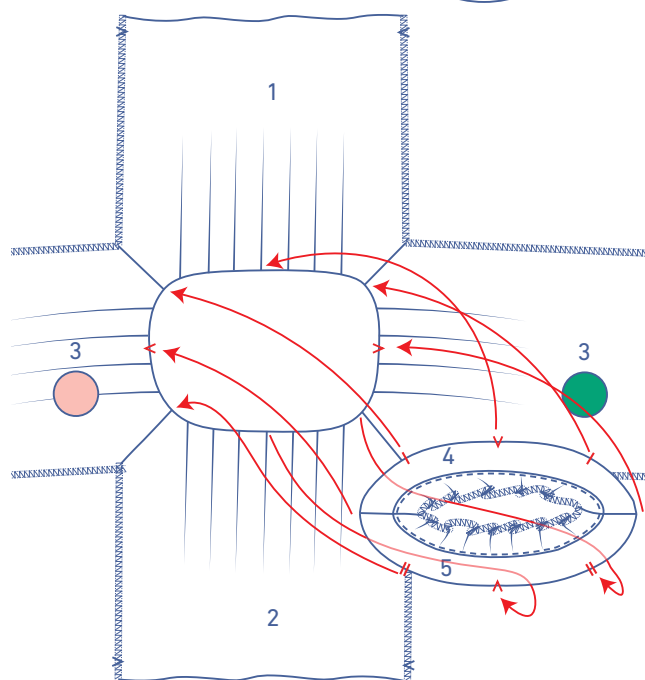


Then pin and sew the neckline of both trim pieces together. Trim the seam allowances to enable the neckline to lie flat when turned out.

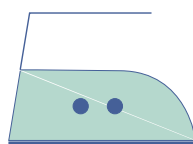




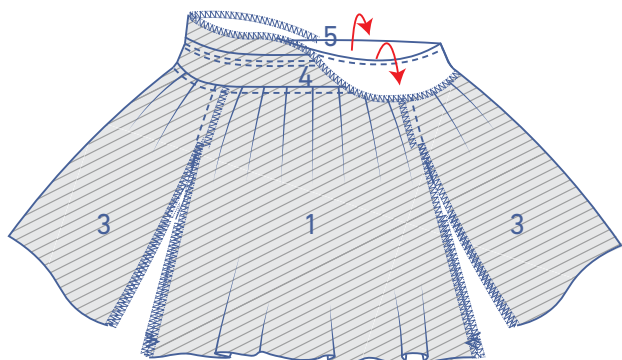
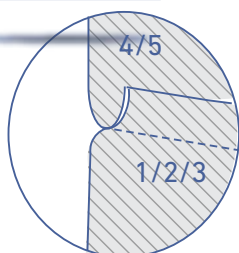
Place the trim piece in front of you with the overlocked side on top. Fold the overlocked trim piece over and sew to the seam allowance underneath, anchoring it right next to the seam.



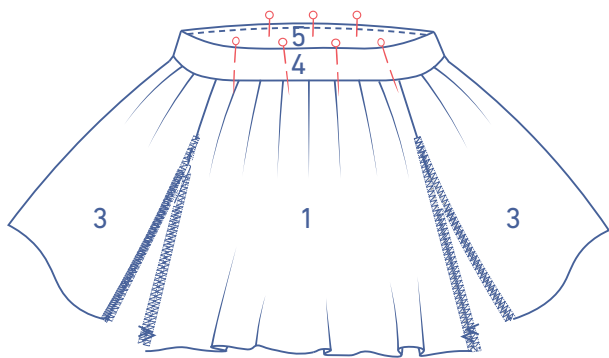
Pin and sew the unoverlocked trim piece to the top edge of the top, matching the markings. The V-notches in the trim that mark the CF and CB match the middle pleats of the front and back. The remaining notches in the trim should line up with the seams indicated. The shoulder seams of the trim should match the V notches in the sleeves.



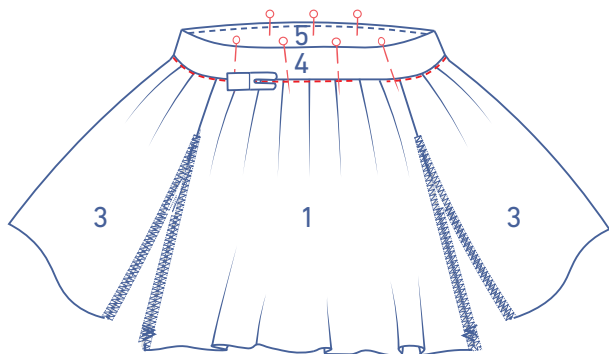
Press the seam allowance towards the trim.



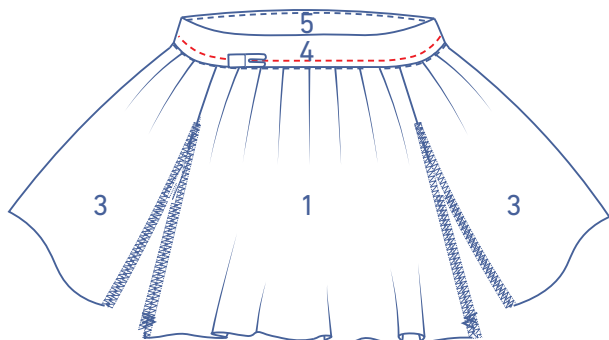
Turn the trim with the overlocked bottom onto the wrong side of the top along the stitching.



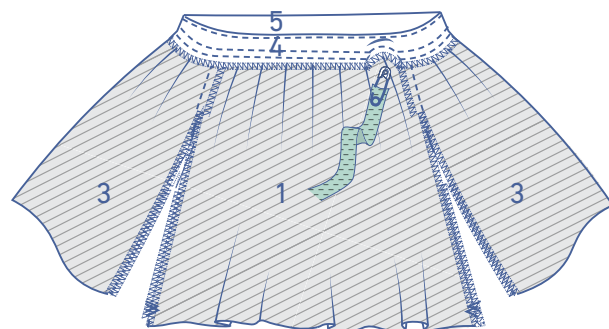
Neatly flatten. Pin the front and back of the trim together along the right side of the top.



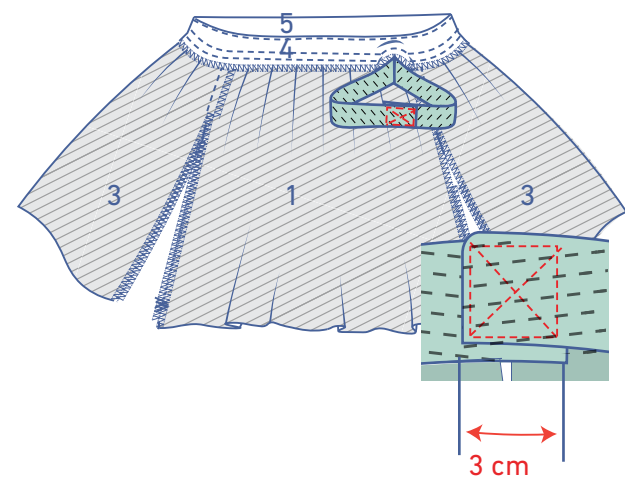
Sew trim together all the way around, stitching in the ditch. Leave an opening through which to thread the elastic later.



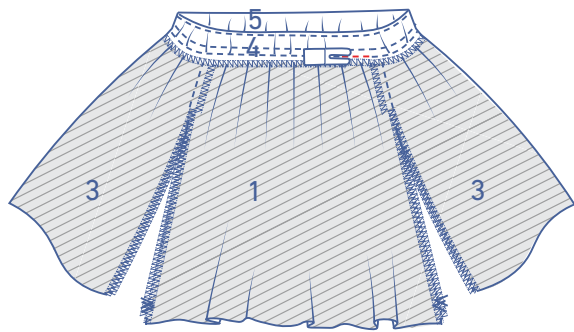
Sew the trim with another line of topstitching at presser foot width from the lapped seam to create a casing for the elastic.



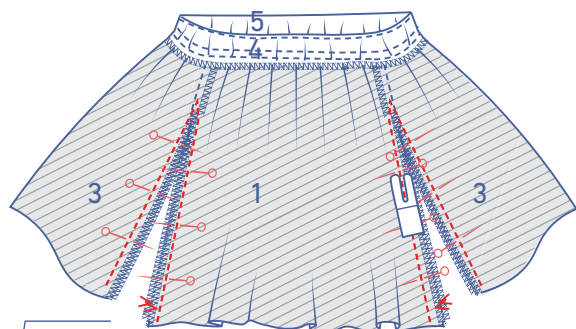
Thread the trim's elastic through the casing via the opening.



Overlap 3 cm of the ends and sew into place with a Box X stitch.

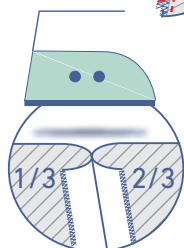


Tuck the elastic back neatly into the casing and sew the opening closed.

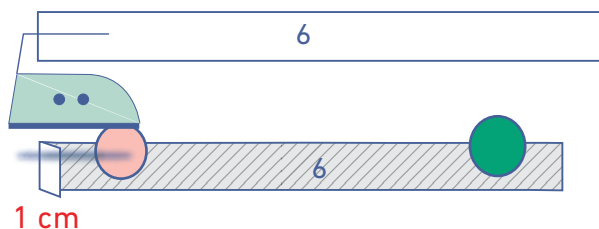


6

Pin the underarm and side seams together and sew.

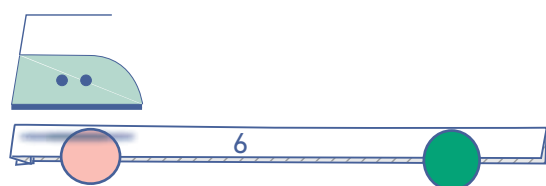


Press the seam allowance open.



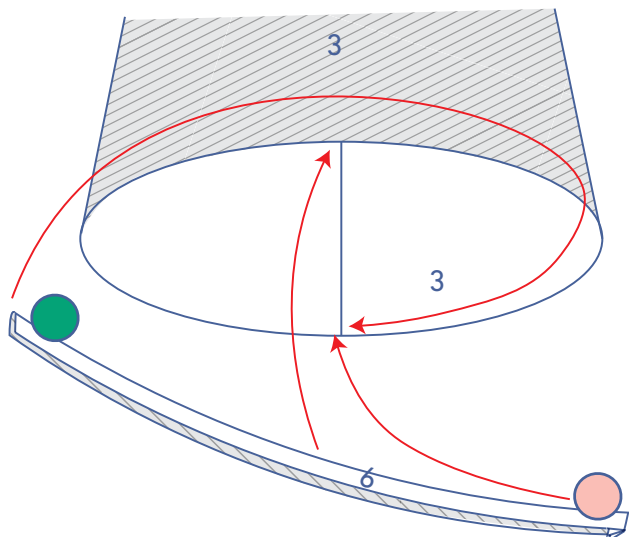
7

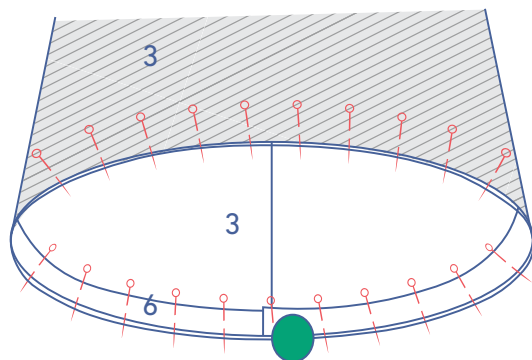
Press 1 cm of one short end of the bias tape (6) towards the wrong side. We've marked this pressed short end with a pink circle. The unpressed short end has been marked with a green circle.



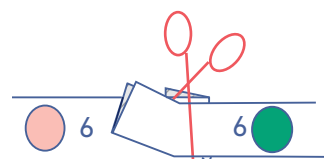
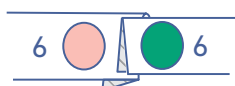
Press the bias tape in half lengthwise with the long ends together and the wrong sides of the fabric facing each other.

Pin both raw edges of the bias tape to the right side of the sleeve. The folded end (pink circle) should match the underarm seam.

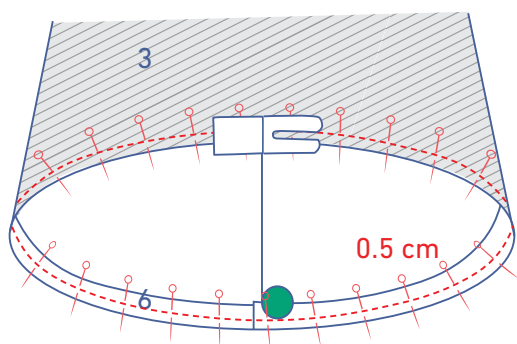




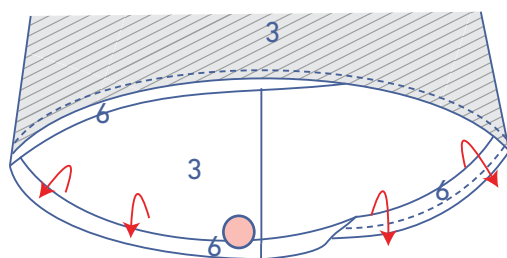
The unfolded end (green circle) of the bias tape should be on top of the folded end.



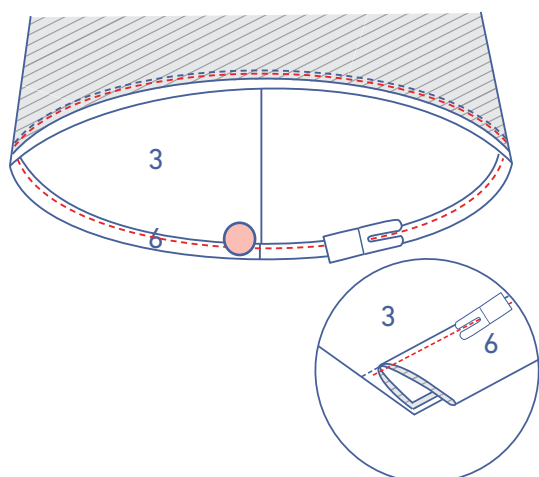
Trim any excess bias tape.



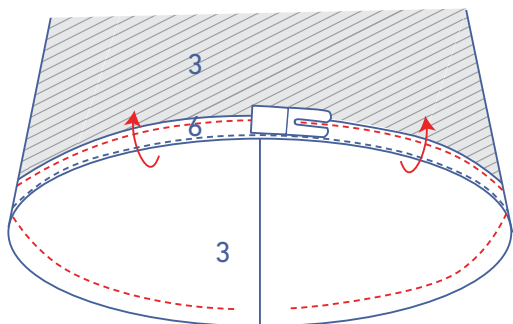
Sew the bias tape into place at 0.5 cm from the raw edge.



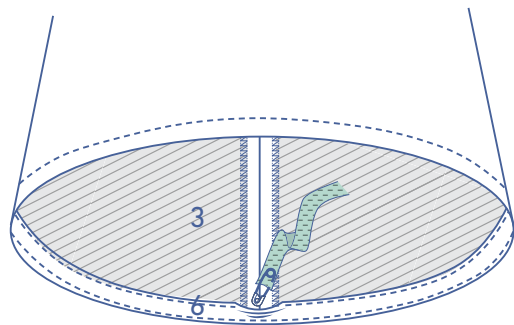
Fold the bias tape and seam allowance over, and...



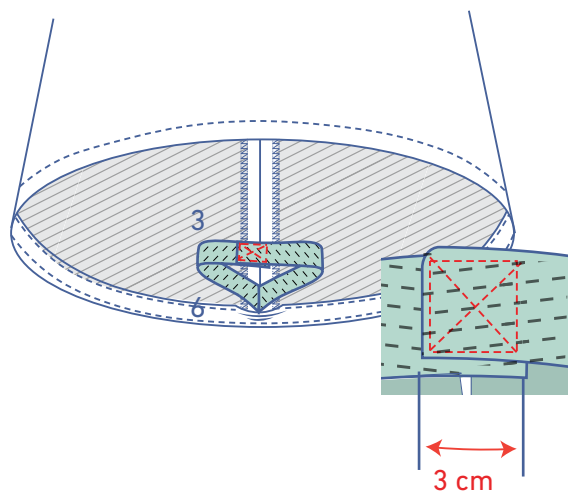
sew the bias tape to the seam allowance underneath, anchoring it right next to the edge.



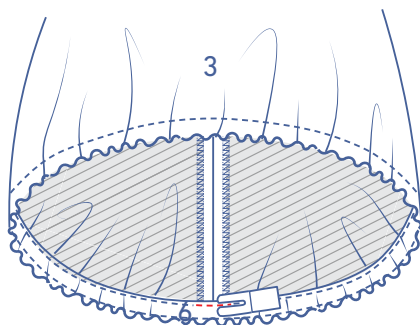
Turn the bias tape up towards the wrong side, all the way around. Sew into place right next to the edge, but leave an opening through which to thread the elastic.



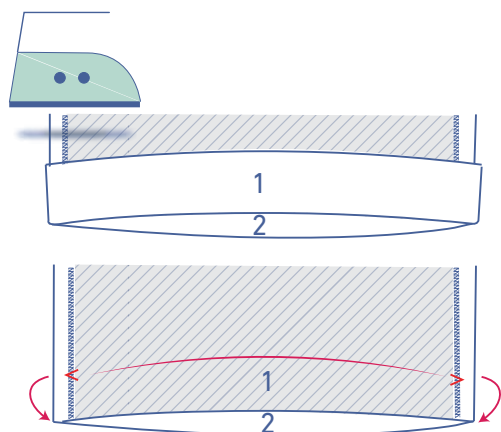
Thread the sleeve hem's elastic through the casing via the opening.



Overlap 3 cm of the ends and sew into place with a Box X stitch.

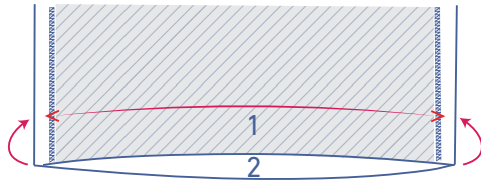


Tuck the elastic back neatly into the casing and sew the opening closed.

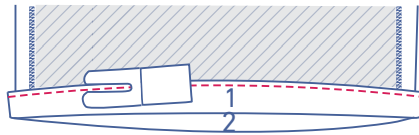
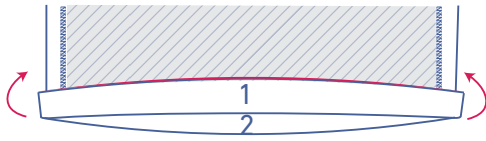


8

Press the hem allowance over at the V notches and then open back out.



Fold over the raw edge to the pressed fold line and fold over again.



Edgestitch into place.