

# Adria by Fibre ⚡ood



# Adria by Fibre ood

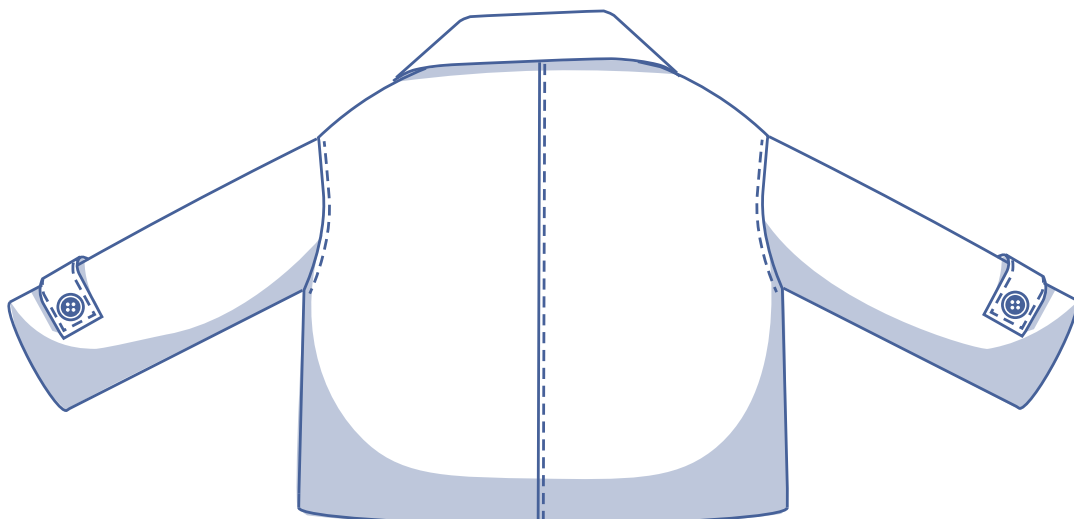
\*\*\*\*\*



XS - XXXL

Every season should start with a new jacket. This short oversized jacket with collar and lapels requires some perseverance, but it pays off beautifully in the end. The slash pockets and double-breasted front only add to Adria's allure.

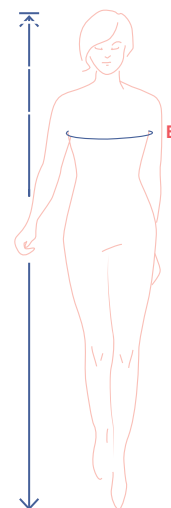
And the tabs at the sleeve hems and decorative topstitching make this pattern look extra on point. Plus, twinning is winning! Have a child in your life? Then make Reese as well for a match made in heaven.



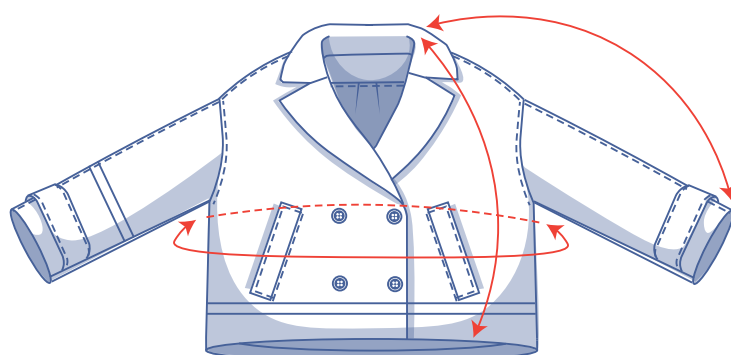
## size chart (in cm)

size	XS		S		M		L		XL		XXL		XXXL		
	4	6	8	10	12	14	16	18	20	22	24	26	28	30	32
body height	160	164	166	167	168	169	170	171	172	172	172	172	172	172	172
B (bust)	76	80	84	88	92	96	100	104	110	116	122	128	134	140	146

Choose your size based on your **bust measurement**. Pick the size that is the best match for your bust.

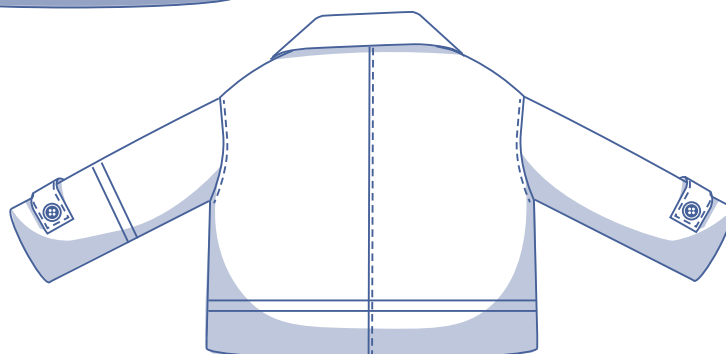


## pattern measurements (in cm)



This chart's measurements are the pattern measurements based on the fabric type and serve as a reference. Ease has been added to the width measurements (in addition to the exact body measurements) for a more comfortable fit. Adria is designed to have an **oversized cut**.

Not a big fan of oversized items? Just go a size smaller.



== shorten or lengthen the pattern here

size	XS	S	M	L	XL	XXL	XXXL
length	55.25	57.25	59	60.75	63	65.25	67.75
sleeve length*	67.25	69	70.75	72.5	74.5	76.5	78.5
bust	111.5	119.5	127.5	135.5	145.5	157.5	169.5

\* Including the shoulder length.

Compare the stated lengths to the measured or desired lengths. **Lengthen** or **shorten** the jacket and/or sleeves by cutting the pattern pieces at the indicated double lines. Then either increase the distance between the cut pieces by the desired amount (to lengthen) or overlap the pieces (to shorten). Make sure that the CF and CB lines and the side seams are always straight.



### IMPORTANT

Adjust the amount of fabric to be used based on these alterations.

## notions



- Thread
- Iron-on interfacing: max. 205 cm
- Buttons (Ø 2.5 cm): 6
- Lining: see table
- Fabric: see table

lining fabric use		XS	S	M	L	XL	XXL	XXXL
fabric width 110 cm	cm	130	155	165	180	185	210	220
fabric width 140 cm	cm	110	115	120	120	145	160	185

The corresponding fabric layout can be found on page 6 of these sewing instructions.

fabric use		XS	S	M	L	XL	XXL	XXXL
fabric width 110 cm	cm	230	240	245	285	295	305	315
fabric width 140 cm	cm	180	185	190	200	225	230	240

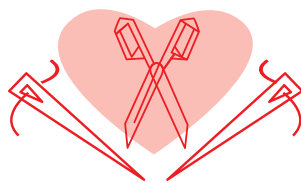
The corresponding fabric layout can be found on page 6 of these sewing instructions.

## fabric advice



Adria can be made in all kinds of different fabrics, whether in a print or a classic solid. Some options include woven jacquard, felt, flannel, bouclé, boiled wool, padded fabrics and... even denim!

# Proud to be #Sewista









## pattern pieces & seam allowances (in cm)

To sew the garment as described in the instructions, draw the illustrated seam allowances around the paper pattern pieces before cutting them out. If you are using a PDF pattern, the pattern can be printed with or without seam allowance. To find out more, watch the [video](#).

- |                                    |                                    |
|------------------------------------|------------------------------------|
| 1. front: 2x                       | 9. pocket opening: 2x              |
| 2. back: 2x                        | 10. sleeve tab: 4x                 |
| 3. sleeve front: 2x                | 11. facing front: 2x               |
| 4. sleeve back: 2x                 | 12. facing back: 1x on fabric fold |
| 5. upper collar: 1x on fabric fold | 13. lining front: 2x               |
| 6. undercollar: 1x on fabric fold  | 14. lining back: 1x on fabric fold |
| 7. flap: 2x                        | 15. sleeve lining: 2x              |
| 8. inner pocket bag: 2x            |                                    |

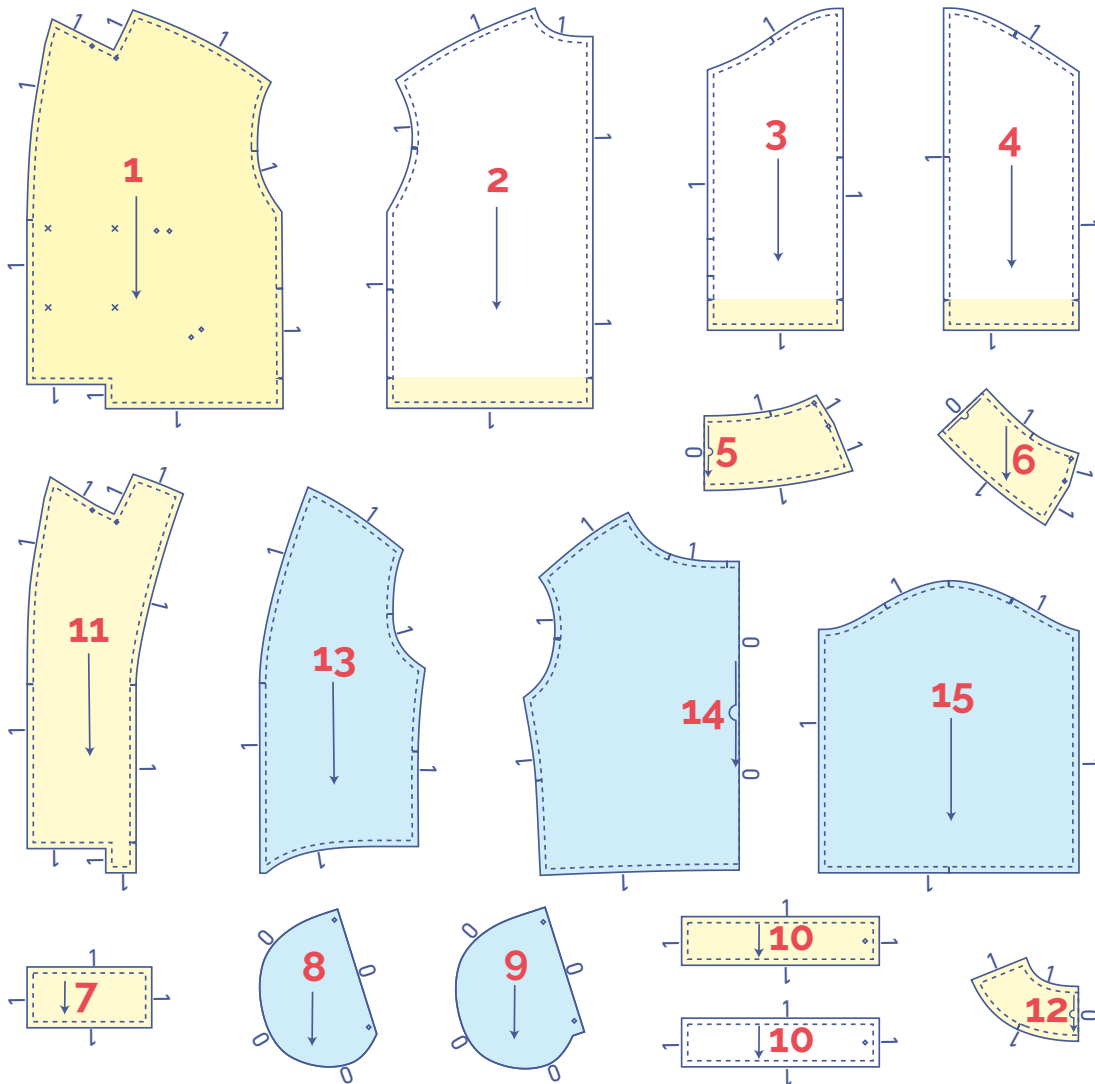
	material type
	fabric
	iron-on interfacing
	lining

### ATTENTION

Do you have Fibre Mood edition 21? And are you planning to make the Adria coat? Be sure to cut pattern piece 6 on the bias. Unfortunately on the pattern sheet for Adria in the printed magazine, pattern piece 6 (undercollar) is printed on the grain - the pattern piece itself (the shape, notches and sizing) is correct!

We are very sorry for the inconvenience. You can download the pattern piece 6 with the rotated grain line here:

<https://www.fibre mood.com/en/adria>



### TIP

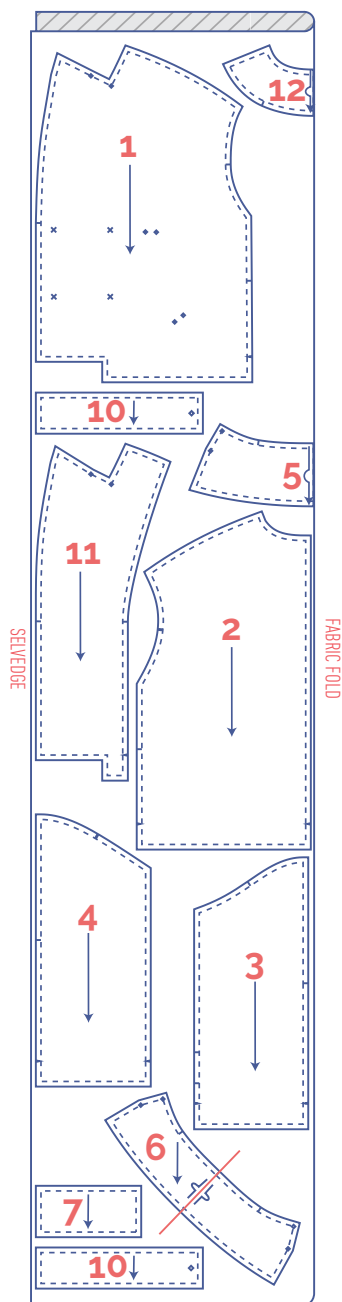
The undercollar is smaller than the upper collar and is cut on the bias. This prevents it from peeking out on the right side of the collar.

## fabric layout – solid fabrics

### fabric width 110 cm

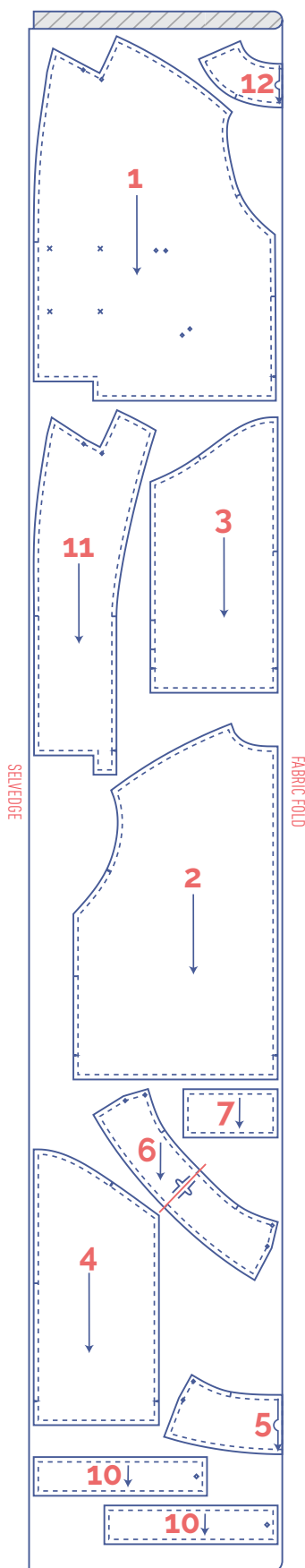
XS - M

L - XXXL



#### IMPORTANT

You only need pattern piece 6 once.



#### IMPORTANT

You only need pattern piece 6 once.

## marking pattern pieces



Notch the pattern paper and fabric at the following points



single notch



double notch



V-notch/fabric fold



Mark the following internal points with marking thread



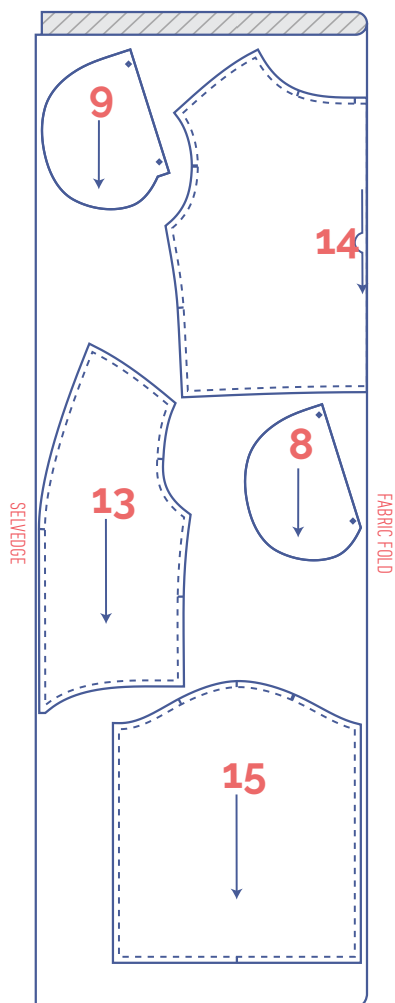
centre point



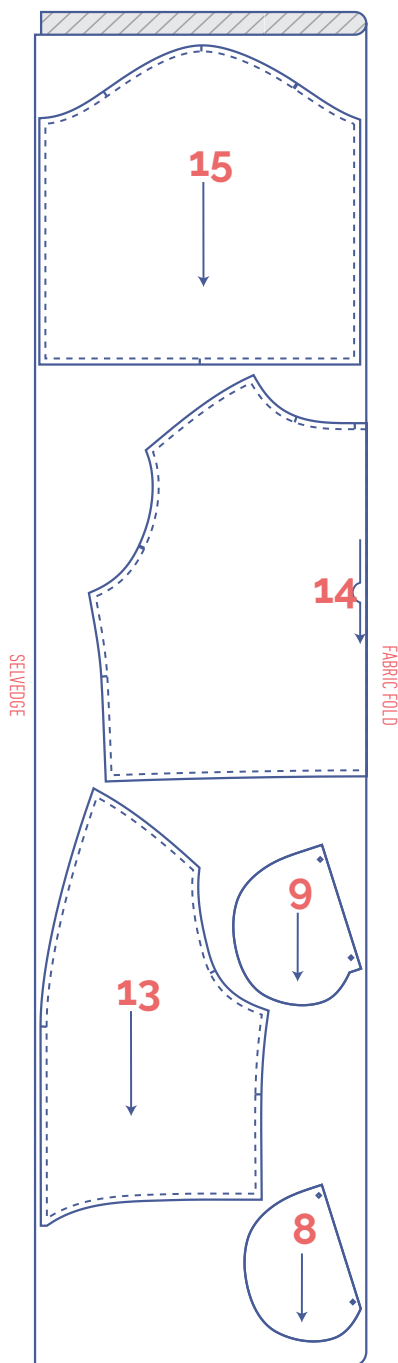
snap fastener

## lining fabric layout fabric width 110 cm

XS - M



L - XXXL



## marking pattern pieces



Notch the pattern paper and fabric at the following points



single notch



double notch



V-notch/fabric fold



Mark the following internal points with marking thread



centre point



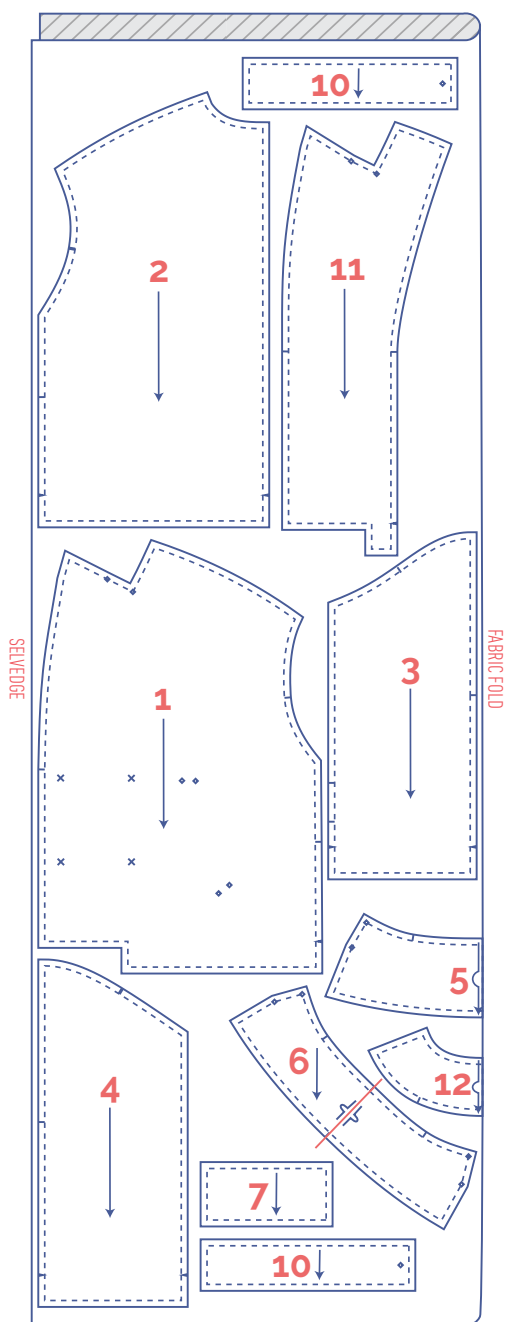
snap fastener

## fabric layout – solid fabrics

### fabric width 140 cm

XS - L

XL - XXXL

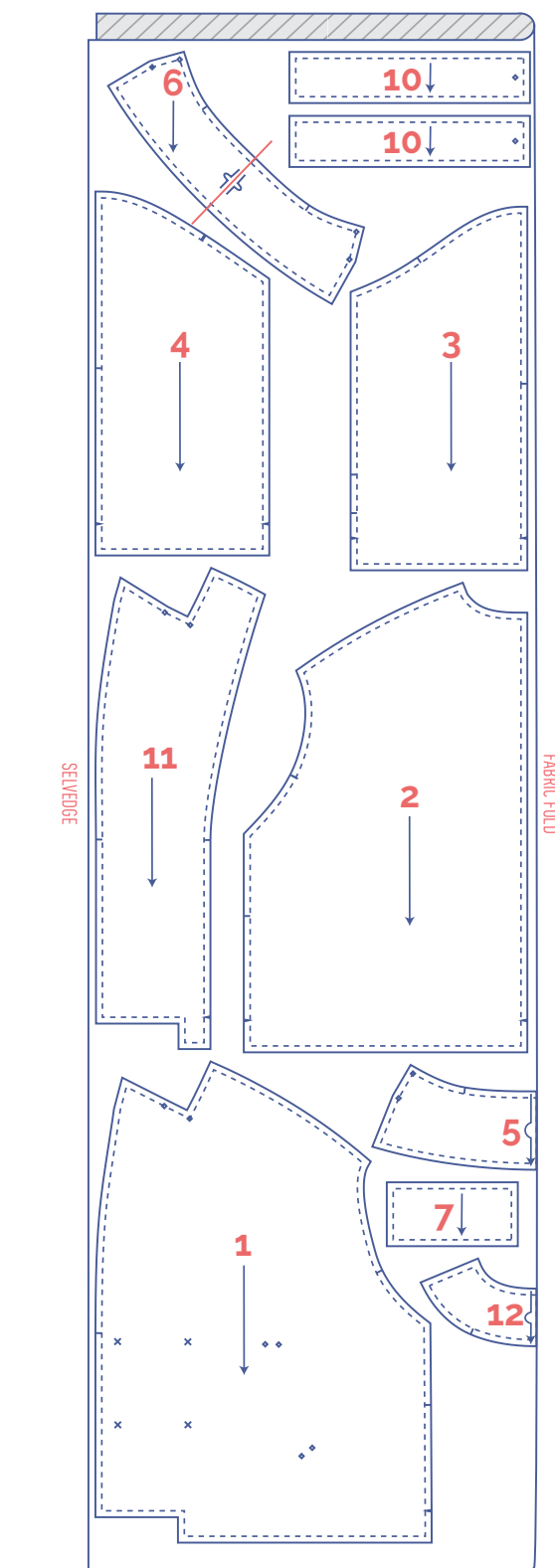


#### IMPORTANT

You only need pattern piece 6 once.

### marking pattern pieces

	Notch the pattern paper and fabric at the following points
	single notch
	double notch
V	V-notch/fabric fold



#### IMPORTANT

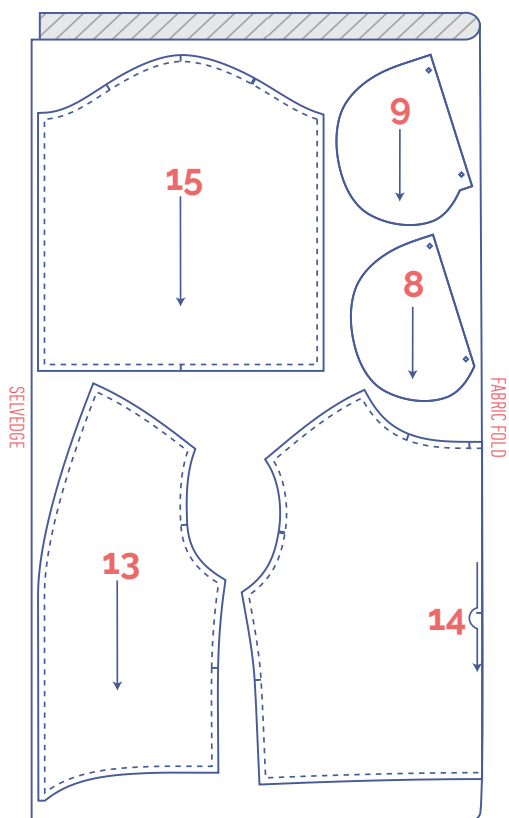
You only need pattern piece 6 once.

	Mark the following internal points with marking thread
	centre point
	snap fastener

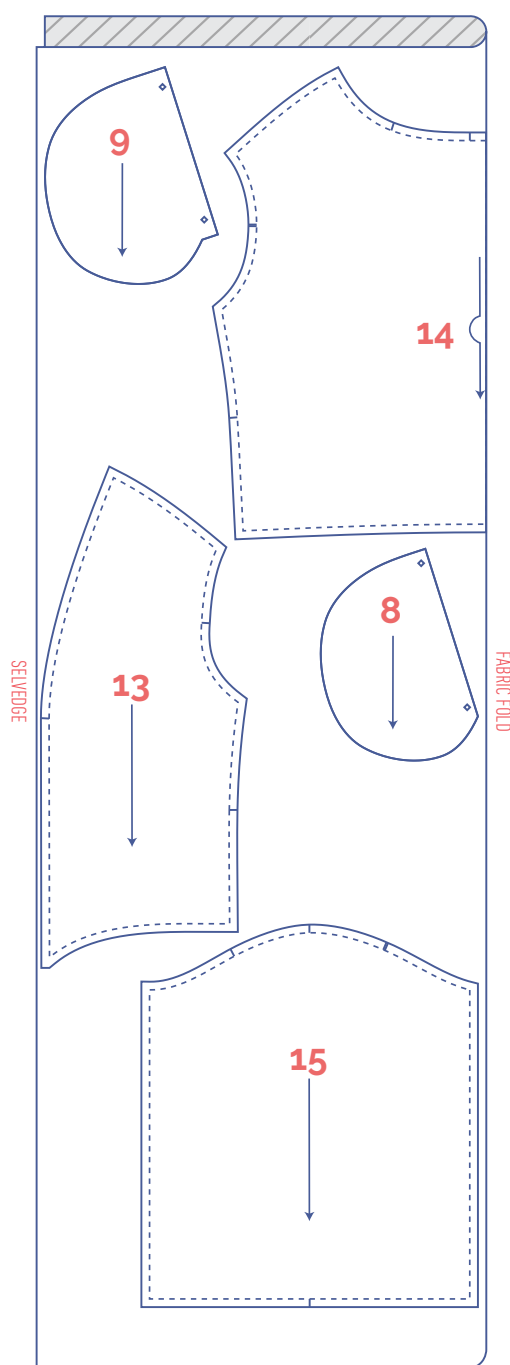


## lining fabric layout fabric width 140 cm

XS - L



XL - XXXL



## marking pattern pieces

	Notch the pattern paper and fabric at the following points
	single notch
	double notch
V	V-notch/fabric fold

	Mark the following internal points with marking thread
	centre point
	snap fastener

# sewing instructions



The method used to finish the seams depends on the fabric used.  
The pieces are always sewn together with the right sides of the fabric facing, unless stated otherwise.

F front

B back

RF right front 

LF left front 

CF centre front

CB centre back

RB right back 

LB left back 

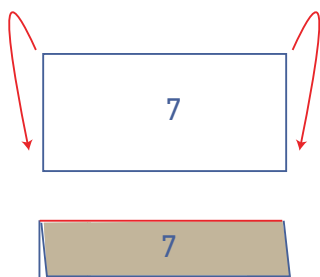
 right side

 wrong side

 lining right side

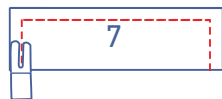
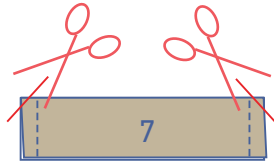
 lining wrong side

 iron-on interfacing



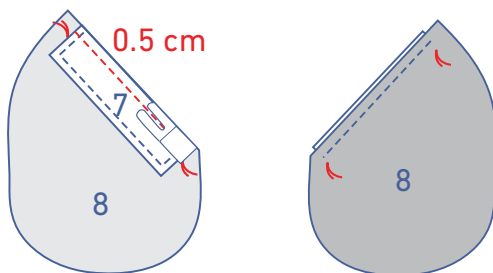
**1**

Fold the flap (7) in half with the long ends together and the right sides of the fabric touching.



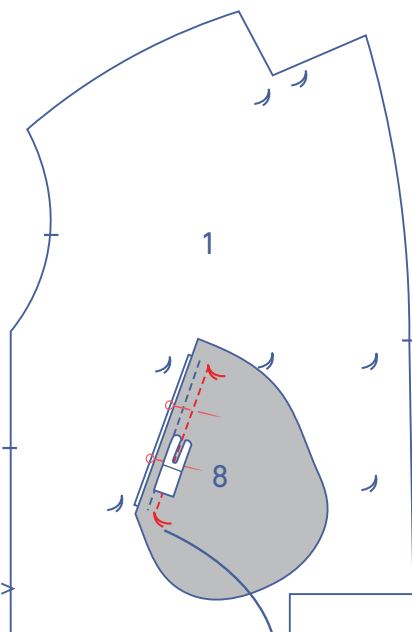
Sew the short ends closed. Clip the corners and turn the right way out.

Topstitch at presser foot width from the finished edges.

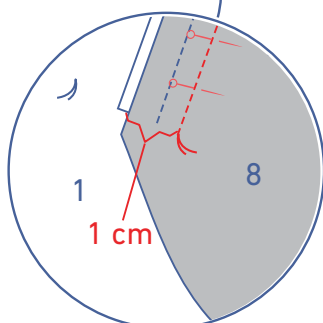


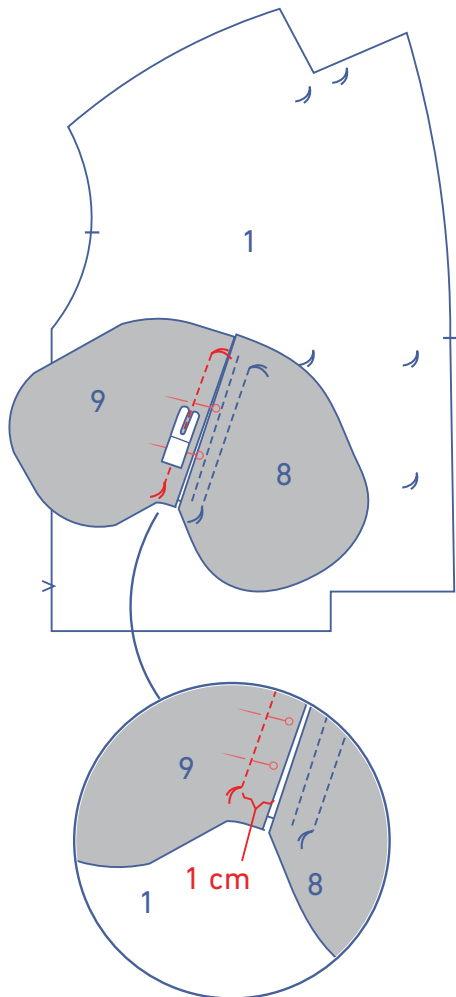
Place the raw edges of the flap between the marking threads of the inner pocket bag (8), lining up raw edges. The eventual right side of the flap should be facing up. Sew into place at 0.5 cm

Turn the inner pocket bag + flap over so that the wrong side of the inner pocket bag is facing up with the flap underneath.

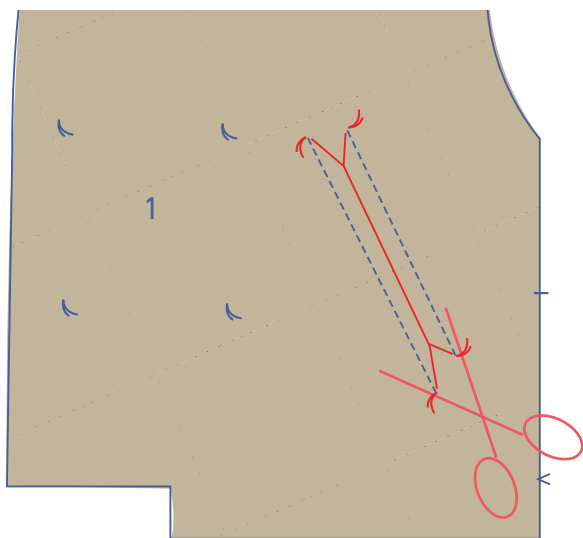


Pin the marking threads on the inner pocket bag (+ flap) to the corresponding marking threads on the front (1) as shown. Sew into place between the marking threads at 1 cm from the raw edge.

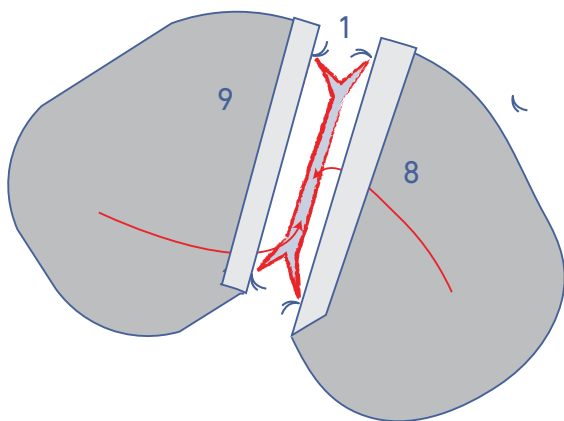




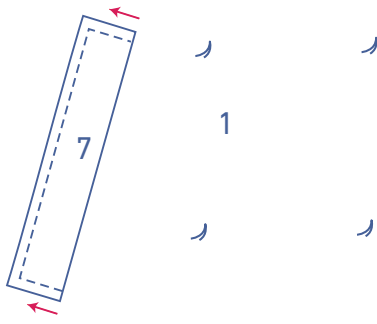
Pin the marking threads on the pocket opening (9) (with the right side facing down) to the corresponding marking threads on the front as shown. Sew into place between the marking threads at 1 cm from the raw edge.



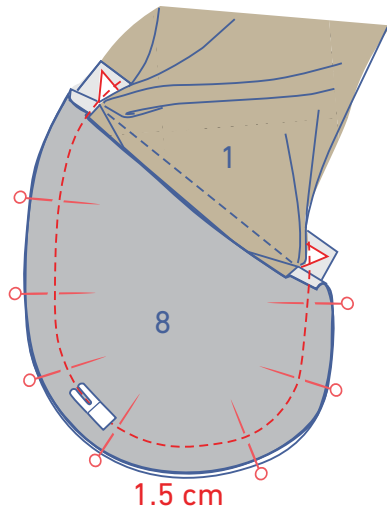
Turn the garment over and snip between the two lines of stitching (appliqué scissors are useful if you have them), stopping a little before each end. From here, snip diagonally to the last stitch at the beginning and end of each line of stitching.



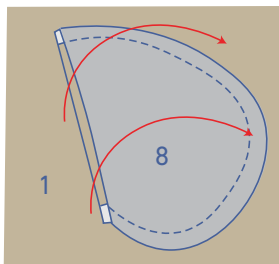
Push the pocket pieces + corners (produced by your previous cutting) through the right side to the wrong side of the front. The flap remains on the right side of the front.



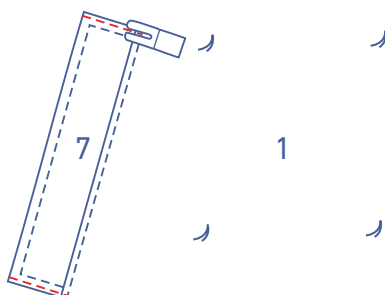
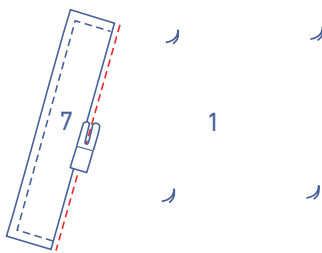
Neatly arrange all the pieces (the flap + pocket pieces) on the right side of the front.



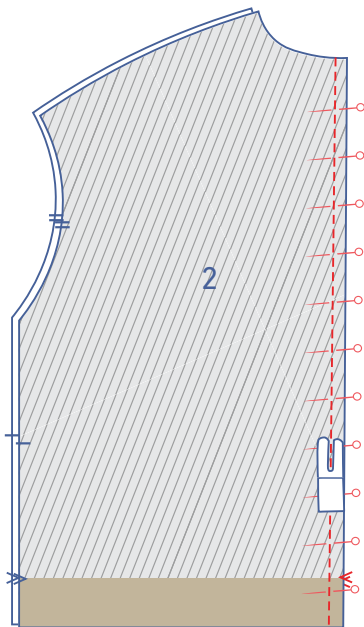
Fold the front over and sew the contours of the pocket pieces (+ the flap corners) together at 1.5 cm from the edge.



Fold the pocket pieces out of the way, then topstitch the front just under the flap's seam.

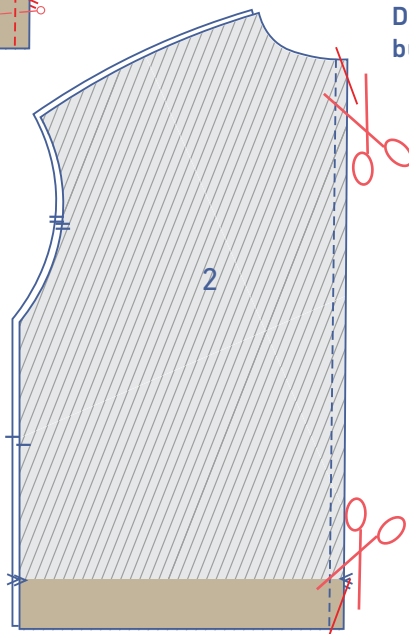


Put the pocket pieces back where they belong. Sew the flap ends to the front right next to the edge.

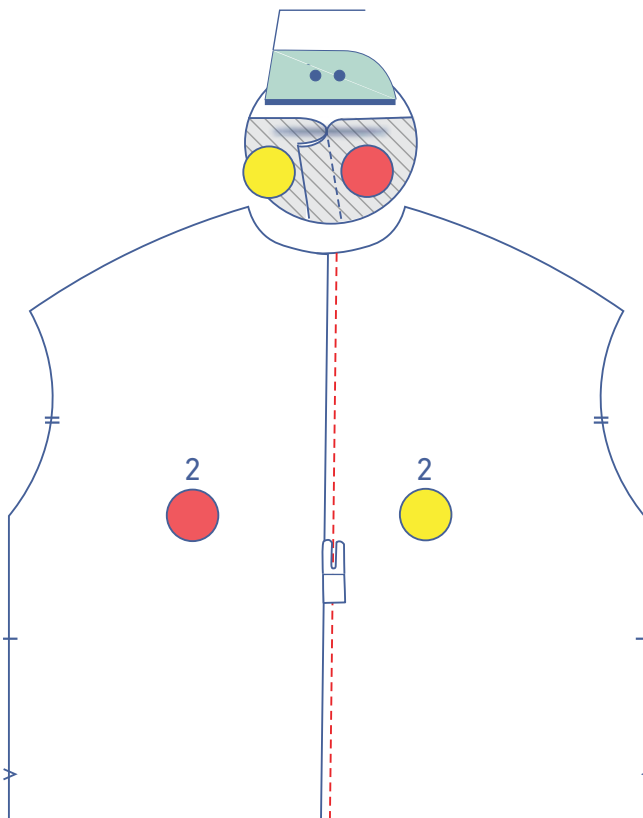


**2**

Pin and sew the CB seam of the back pieces (2) together.

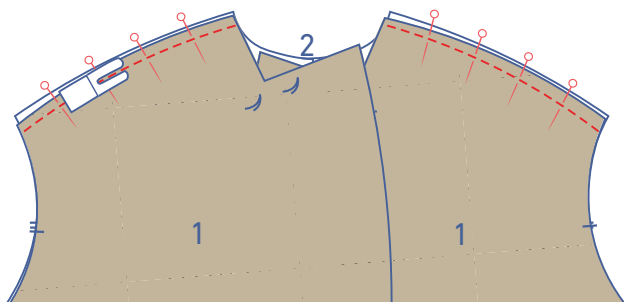


Diagonally clip the seam allowance at the tips to prevent bunching.

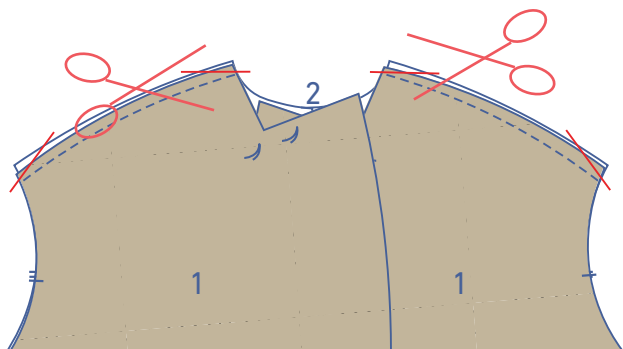


Press the seam allowance towards the RB. Topstitch the RB at presser foot width from the seam.

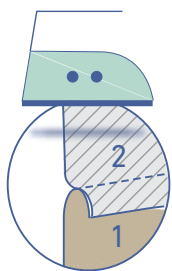




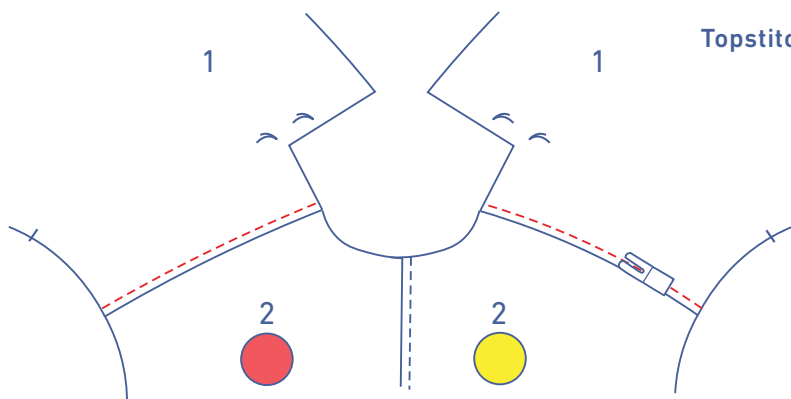
Pin and sew the shoulder seams together.



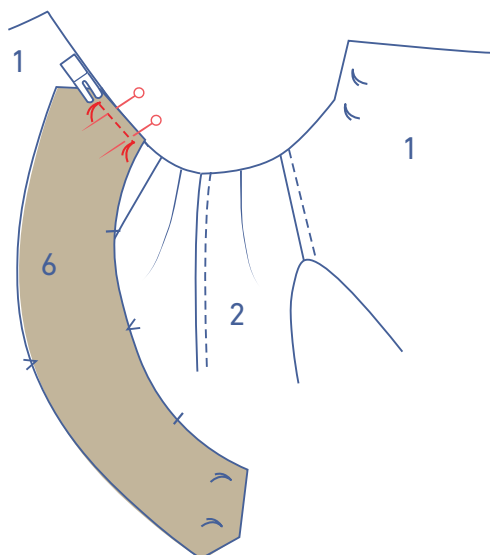
Diagonally clip the seam allowance at the tips to prevent bunching.



Press the seam allowance towards the front.

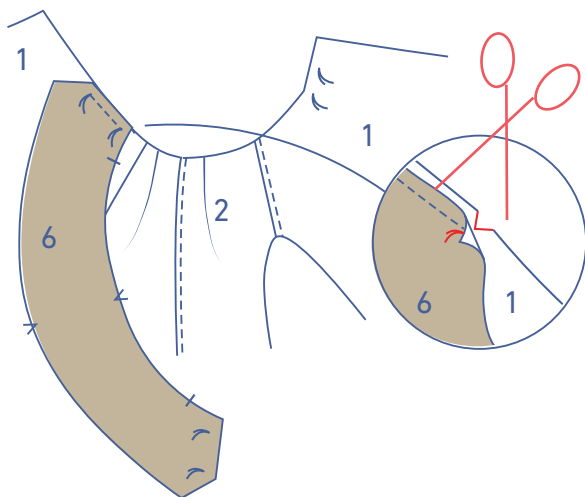


Topstitch the front at presser foot width from the seam.

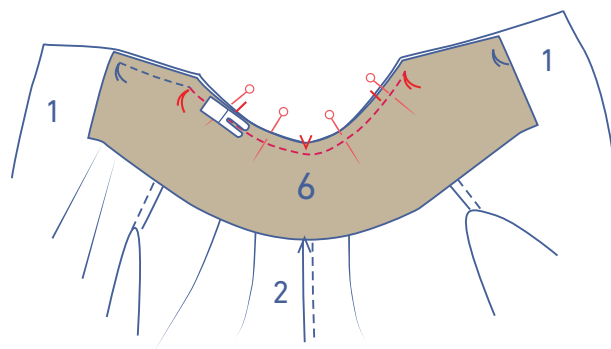


**3**

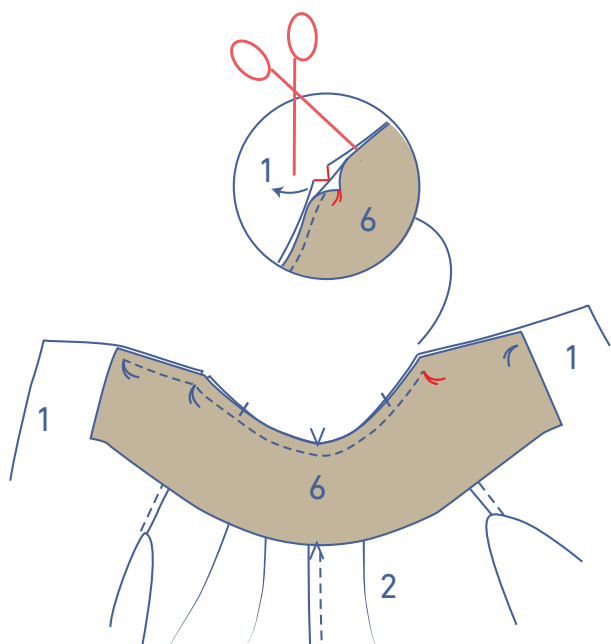
Place the undercollar (6) right side down on the front, matching the marking threads. Start sewing from the indicated marking thread up to the next marking thread in the corner.



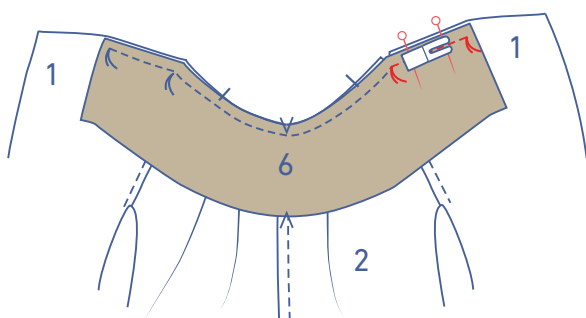
Leave the needle lowered into the fabric there. Raise the presser foot and fold the corner/tip of the collar up. Snip into the seam allowance of the front, stopping just before the needle.



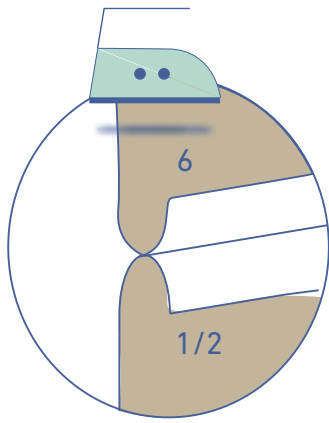
Turn the garment so that you can sew the collar to the garment's neckline, and then lower the presser foot back down. Sew up to the next marking thread in the corner, making sure that the collar's single notches match the shoulder seams and the V notch match the CB seam.



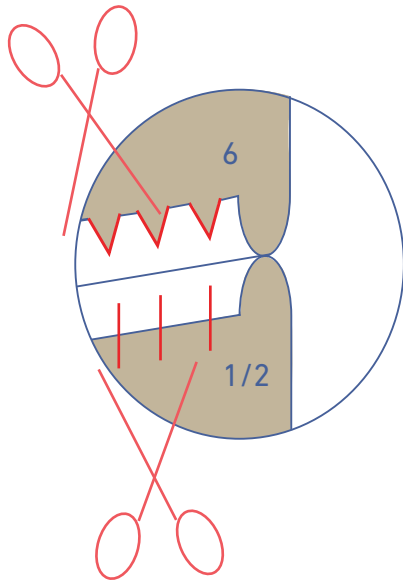
Leave the needle lowered into the fabric at the next marking thread. Raise the presser foot and fold the corner/tip of the collar up. Snip into the seam allowance of the front, stopping just before the needle.



Pivot the garment to sew the last remaining section of the collar. Lower the presser foot back down and sew up to the marking thread.

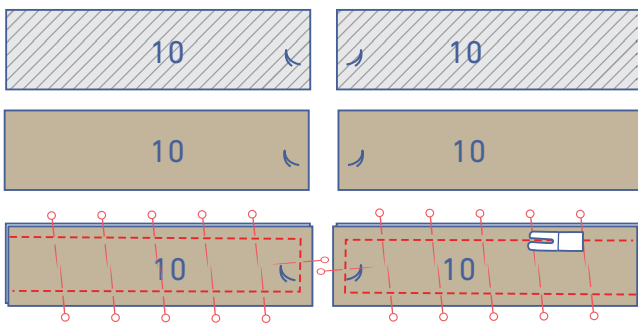


Neatly press all of the seam allowances open.

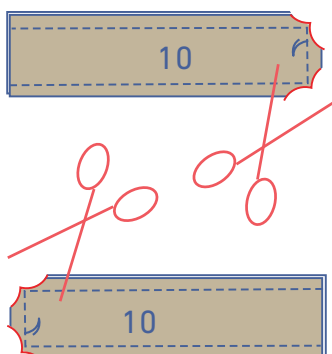


Notch both seam allowances so that the seams aren't too tight and don't tug anywhere.

## 4



Pin each of the uninterfaced sleeve tabs (10) to the interfaced sleeve tabs with the right sides together. Sew the indicated ends.



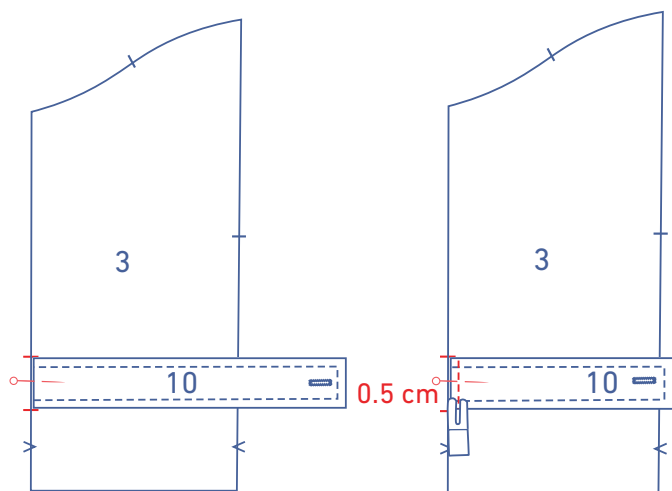
Clip the seam allowance at the corners.



Turn the right way out and topstitch at presser foot width from the finished edges.

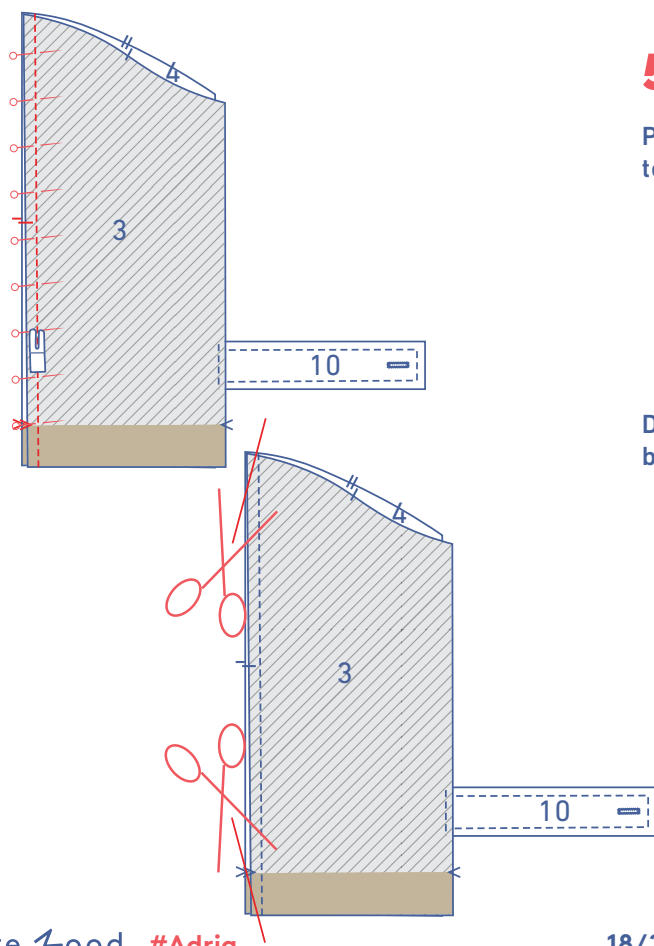


Make a horizontal buttonhole where indicated.



Pin each of the tabs between the two highlighted single notches in the sleeve front (3). The eventual right side of the placket should be facing up.

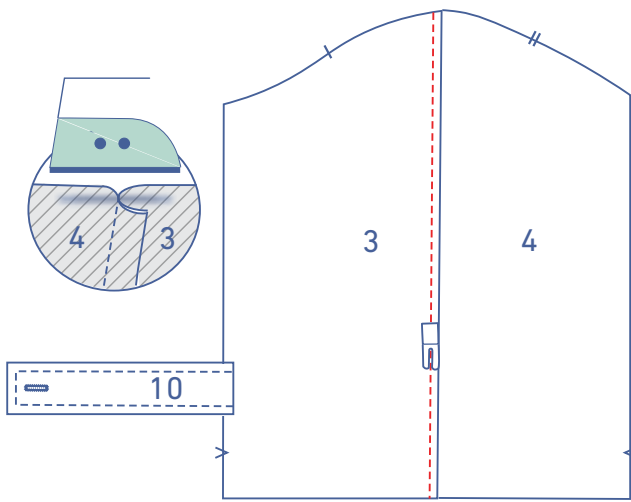
Baste stitch into place at 0.5 cm from the raw edge.



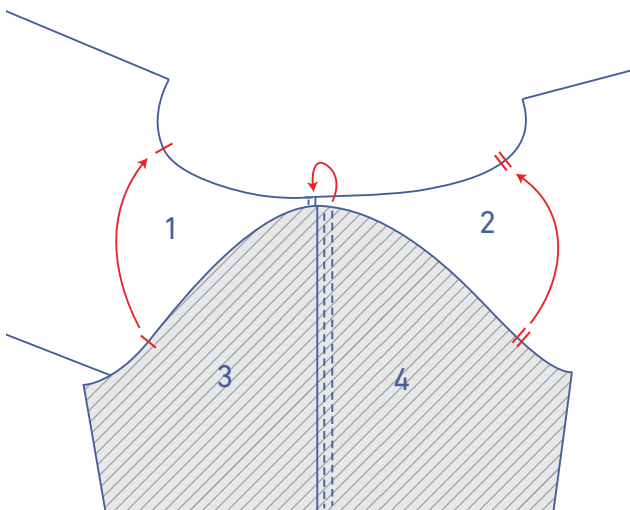
## 5

Pin and sew the sleeve front and sleeve back (4) pieces together, keeping the placket out of the way.

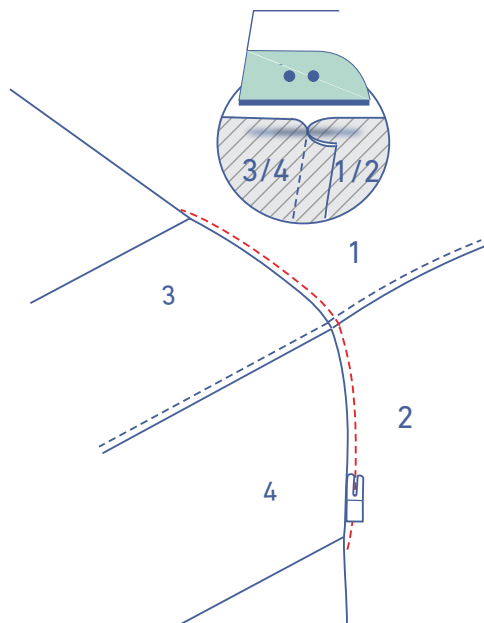
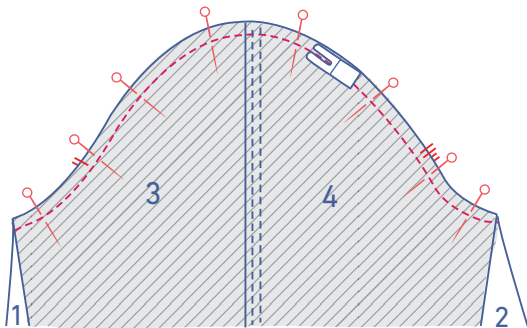
Diagonally clip the seam allowance at the tips to prevent bunching.



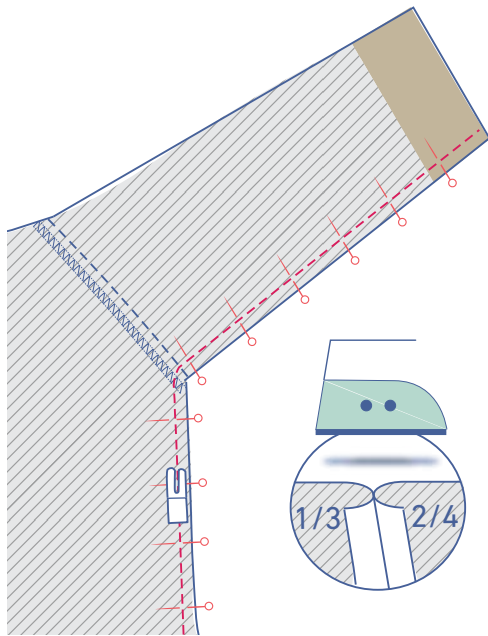
Press the seam allowance towards the sleeve front and topstitch the sleeve front at presser foot width from the seam.



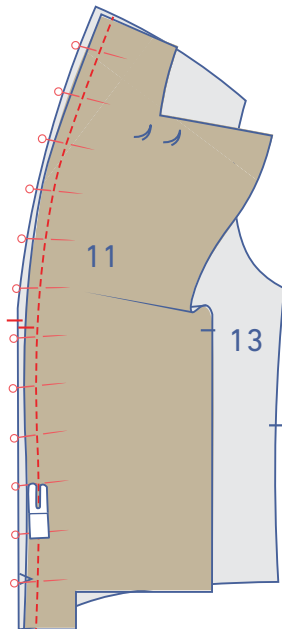
Pin and sew the top of the sleeve (= the sleeve cap) to the armhole, matching the markings. The single notch marks the front, while the double notch marks the back. The shoulder seam and sleeve seam also match.



Press the seam allowance towards the body. Topstitch the body (front + back) at presser foot width from the seam.

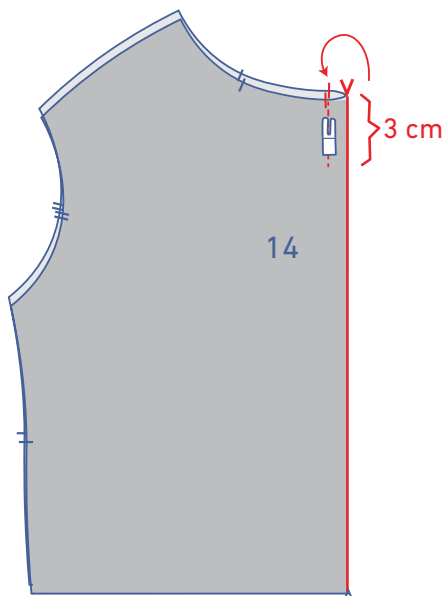


Fold the sleeve in half with the right sides of the front and back together. Pin the underarm and side seams together and sew. Press the seam allowance open.



## 6

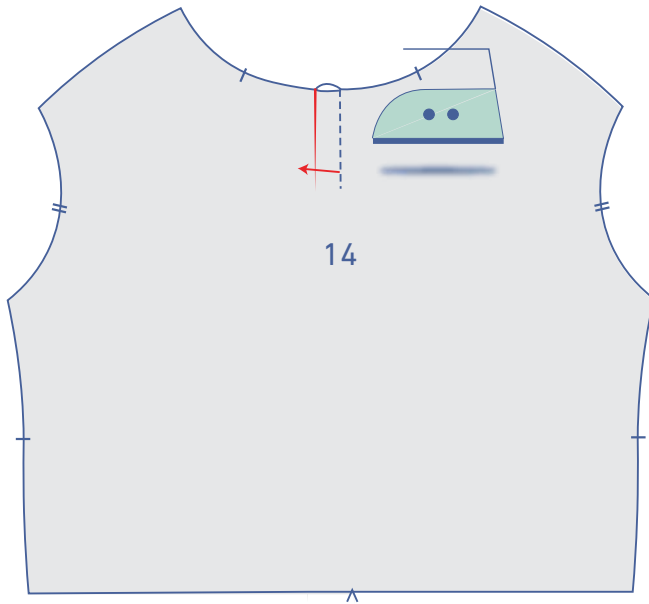
Pin and sew the front facing (11) to the lining front (13), matching the notches.



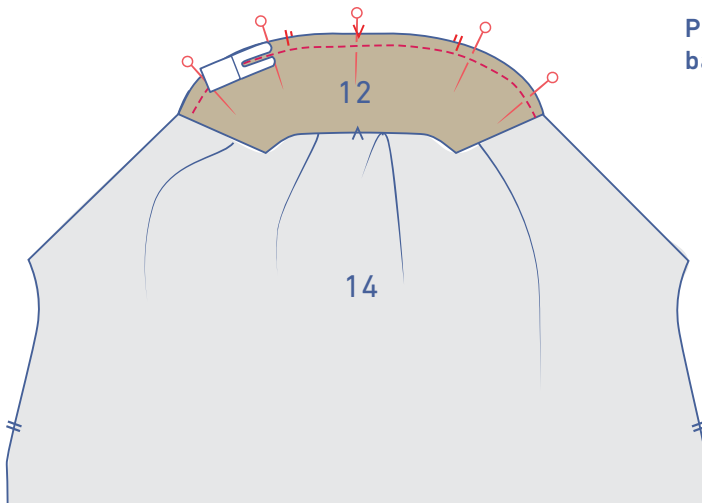
Make a pleat on the CB of the lining back (14) by matching the notches with the fabric right sides together. Sew around 3 cm down in a line that's parallel with the CB line.



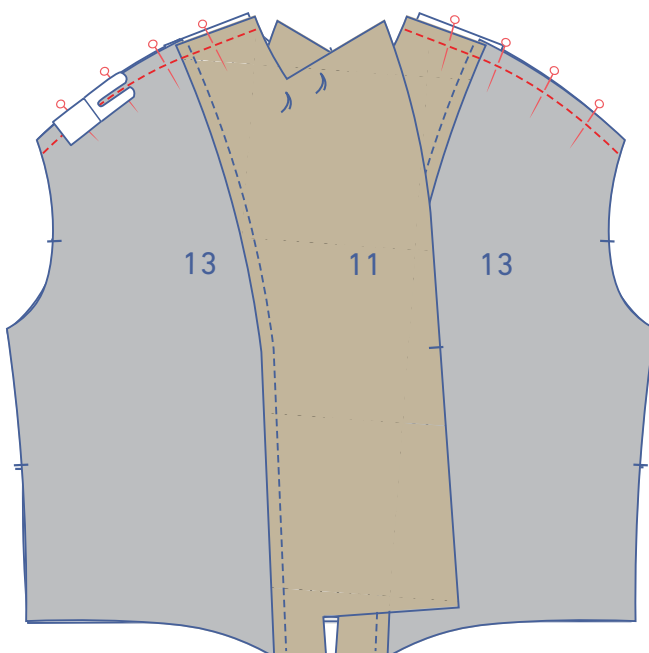
Press the pleat allowance in the direction indicated.

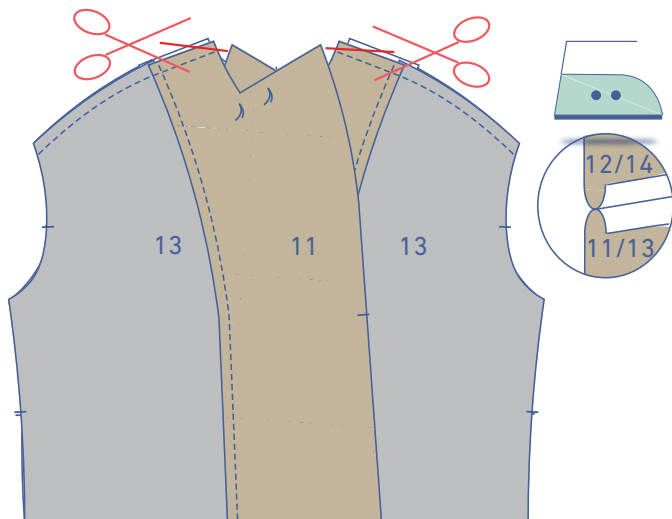


Pin the bottom of the facing back (12) to the top of the lining back and sew, matching the notches.

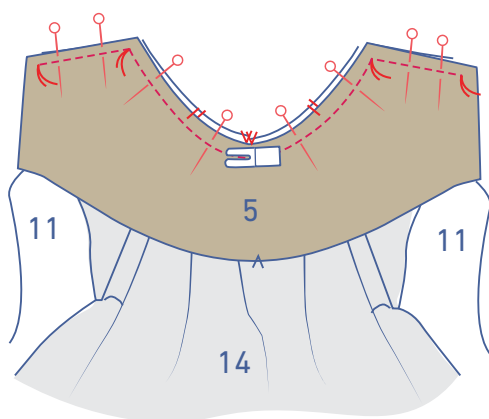


Pin and sew the shoulder seams together.

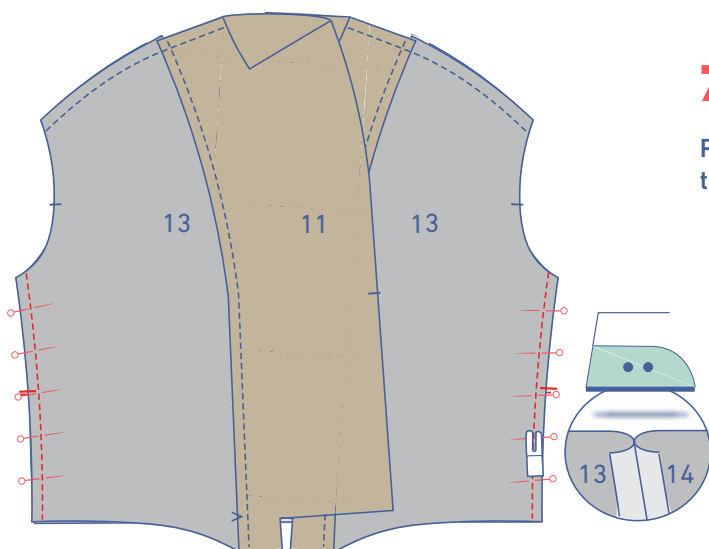
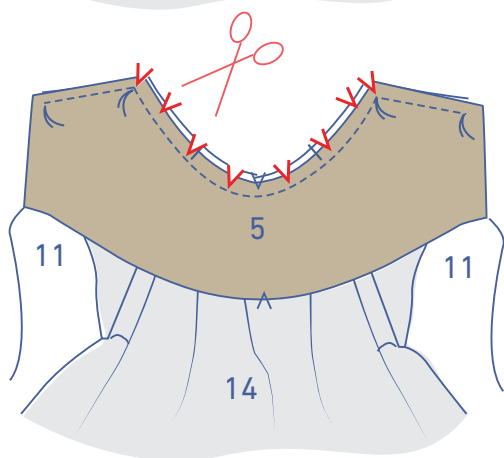




Diagonally clip the seam allowance at the tips to prevent bunching. Press the seam allowance open.

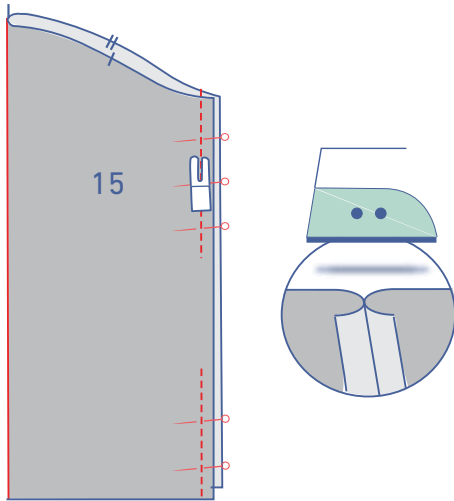


Now, follow the instructions in step 3 to sew the upper collar (5) to the jacket lining.



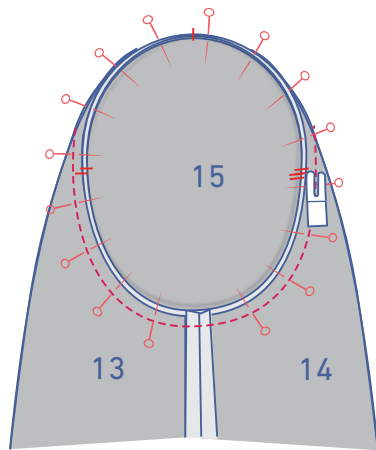
**7**

Pin and sew the side seams of the lining together. Press the seam allowance open.

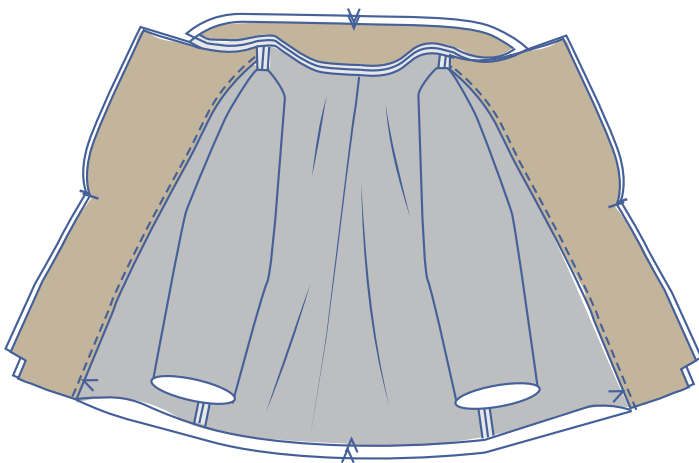


8

Pin and sew the underarm seam of the sleeve lining (15), but leave an opening in one of the sleeve linings to turn the jacket the right way out later. Press the seam allowance open.

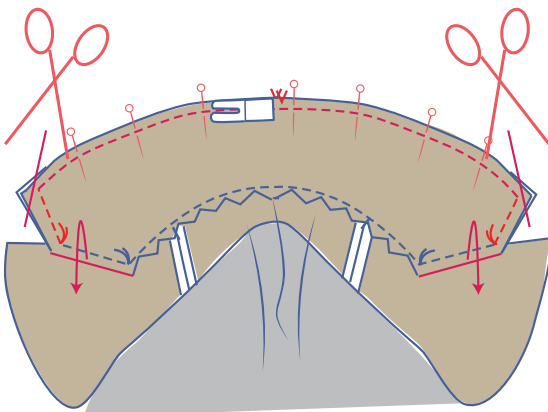


Pin and sew the top of the sleeve lining (= sleeve cap) to the armhole of the jacket lining, matching the markings. The single notch marks the front, while the double notch marks the back. The top notch lines up with the shoulder seam.

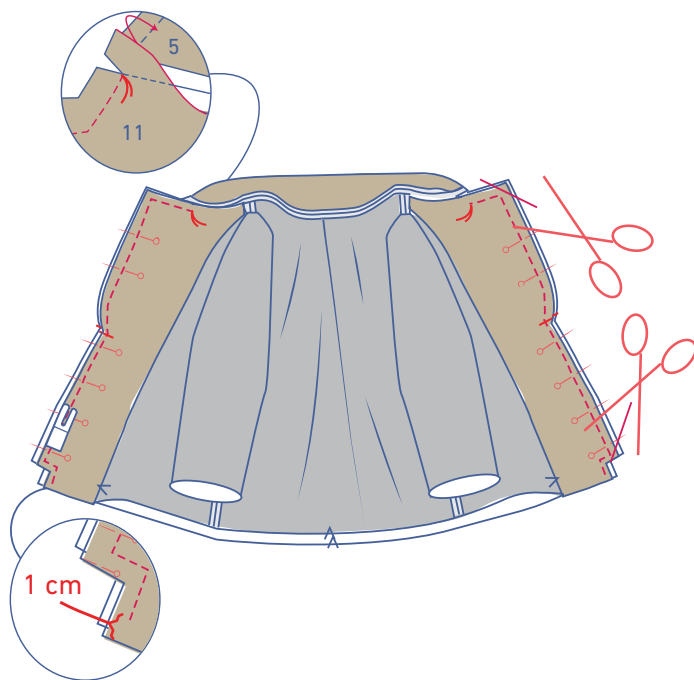


9

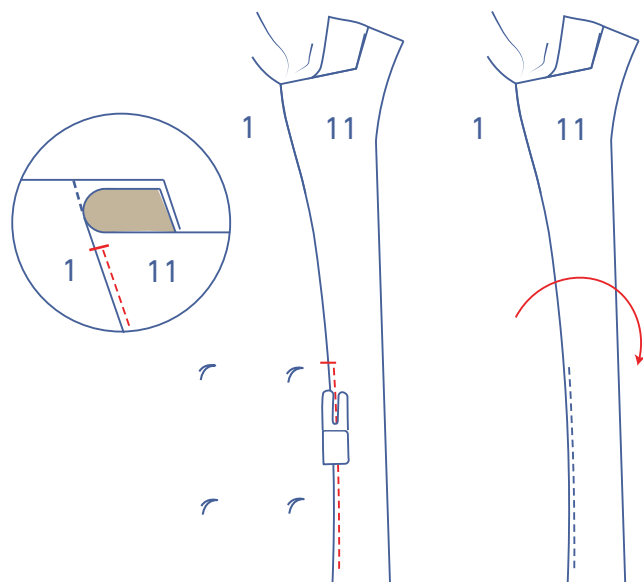
Match the right sides of the jacket and jacket lining.



Pin the upper and undercollar together (the undercollar is smaller than the upper collar, so stretch the contours to match) and sew from one marking thread to the other where indicated. Fold the seam allowances of the lapels out of the way when necessary. Clip the seam allowance at the corners.

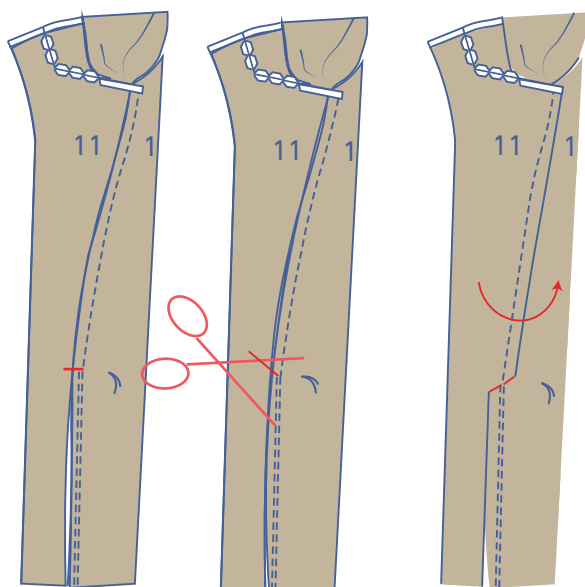


Now, pin the lapels and CF lines together and sew. Start sewing from the marking thread at the intersection of the collar and lapels and stop 1 cm before the hem's raw edge. Be sure to fold the collar's seam allowance out of the way so you can sew precisely from the marking thread. Clip the seam allowance at the corners.

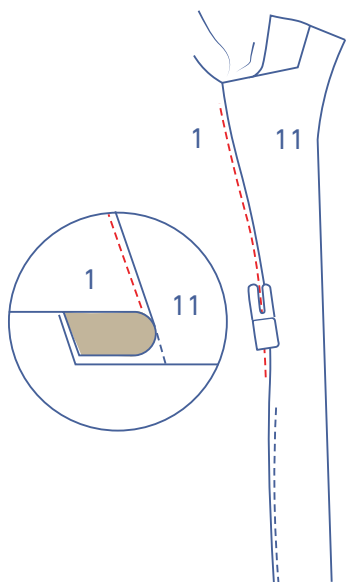


Turn the jacket and jacket lining the right way out. Fold the facing over (as much as possible) so that the right side is facing up. Sew the facing to the seam allowance underneath right next to the seam between the hem and the single notch. This will prevent the seam rolling or curling over.

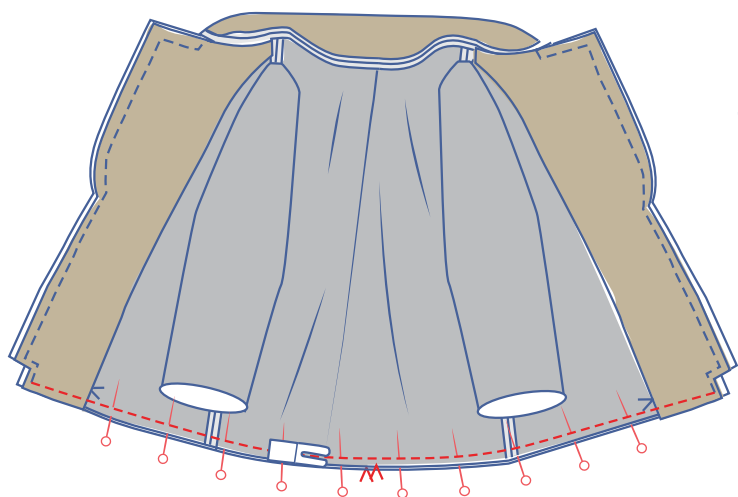
Now, turn the garment the wrong way out again.



Snip into the seam allowance at the single notch, stopping just before the stitching. That way, the seam allowance above the notch can be pushed towards the front.

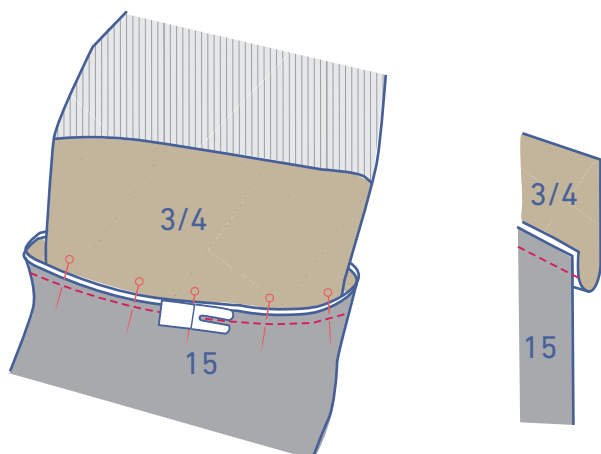


Turn the garment back the right way out again. Fold the seam allowance above the notch towards the front and sew the front to the seam allowance underneath, right next to the seam. Sew as far as possible.

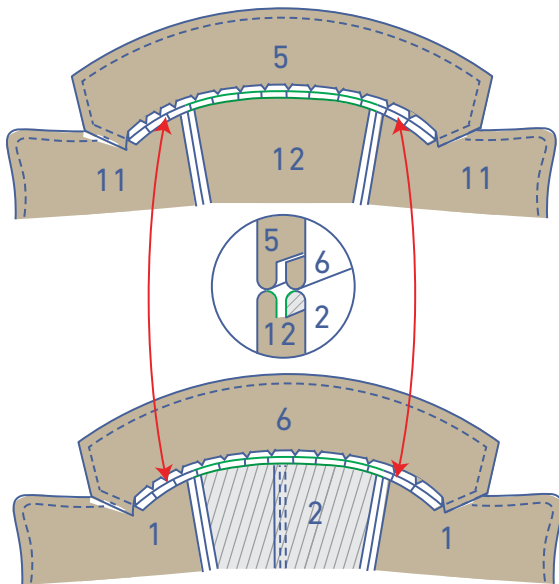


## 10

Turn the jacket the wrong way out and sew the hemlines together.



Neatly slide the sleeve lining into the fabric sleeve. Take the sleeve hem and turn it up onto the hem of the sleeve lining with the right sides of the fabric touching. Pin and sew the hems together.

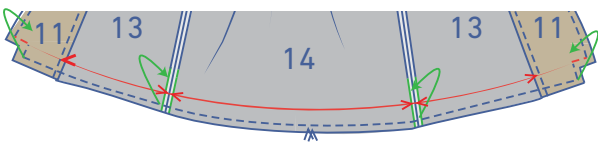


## 11

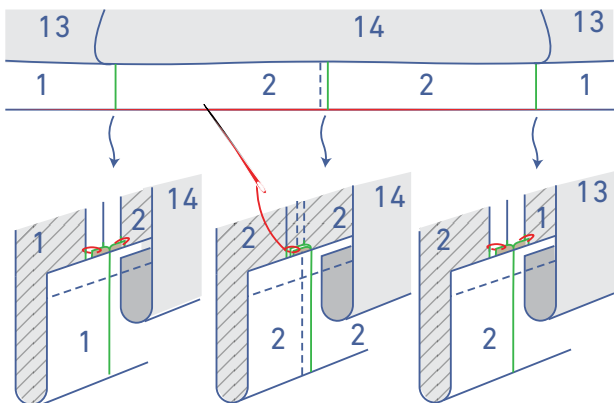
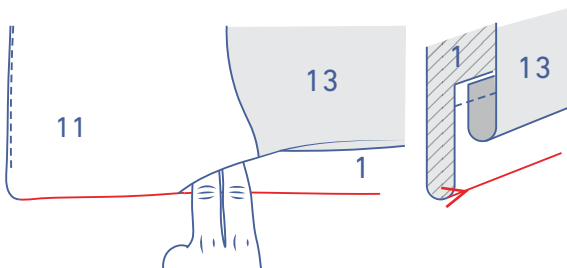
Pass your hand through the opening in the lining sleeve and pull out the neckline section (do not turn the whole jacket out to the right side at this point). Sew the neckline seam allowances of both jacket and lining together from one shoulder to the other by hand or machine. Note: for clarity on the seam to be sewn, the illustration shows the jacket inside out.



Pass your hand through the opening in the lining sleeve. Sew the underarm seam allowances of both jacket and lining together by hand or machine.

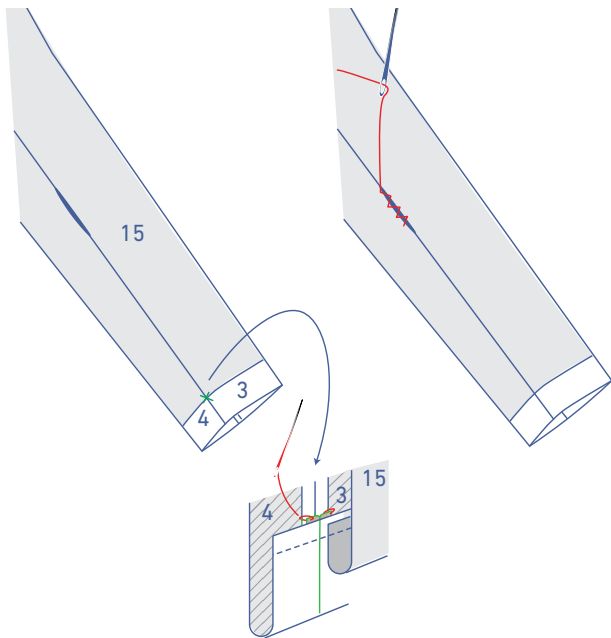


Fold over the hem allowance (+ the corner at the hem) and place the seam allowances indicated with a green line on top of each other (still along the inside of the jacket through the opening in the lining sleeve).

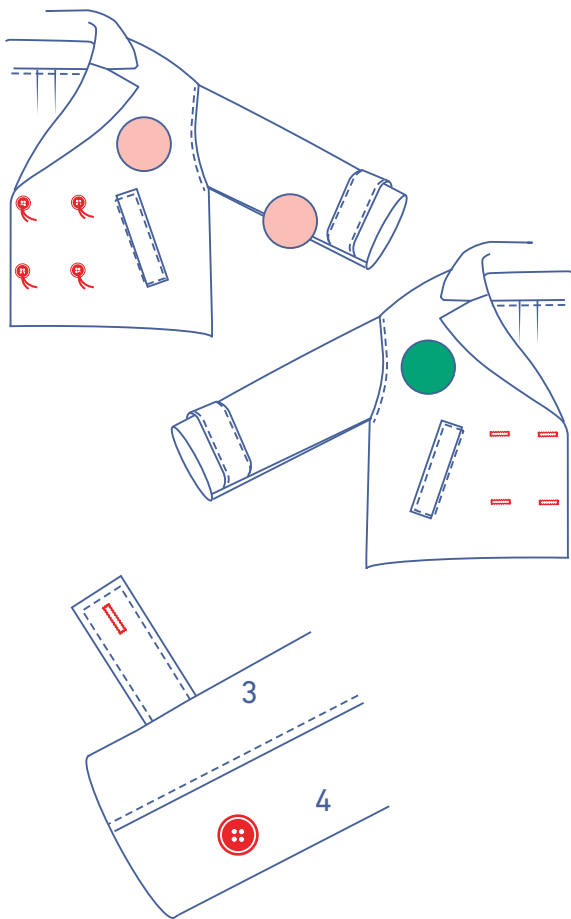


Sew the seam allowances together at the side and CB seam by hand or machine (along the inside of the jacket).





Apply the same principle for the sleeve hem. Sew the opening in the lining sleeve closed by hand.



## 12

Sew the buttons to the LF where indicated. Make horizontal buttonholes in the RF to match the buttons.

Sew each of the sleeve buttons on to match the buttonholes in the sleeve tabs.



Sew the sleeve tab securely into place by hand at the sleeve seam.