

Kika by Fibre ood

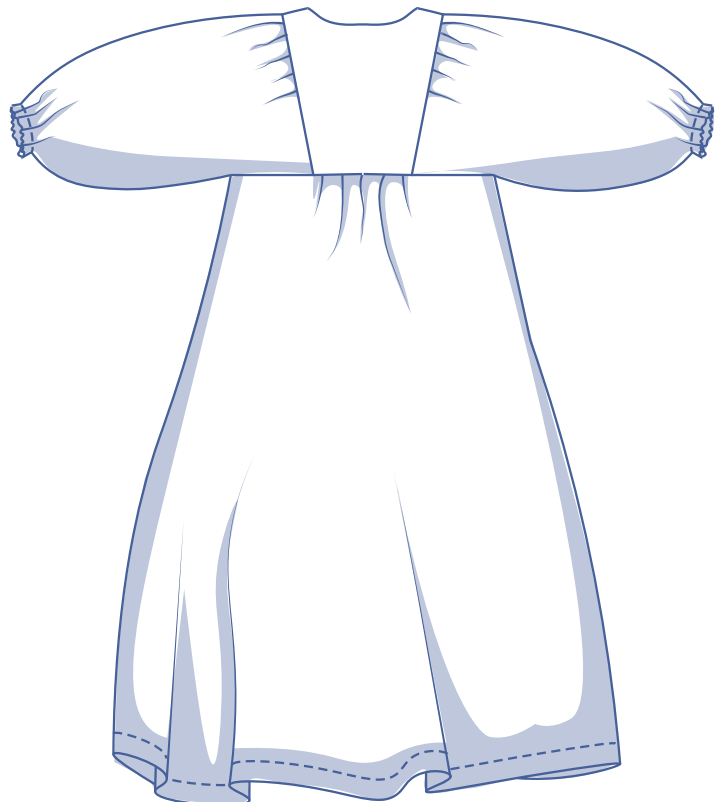
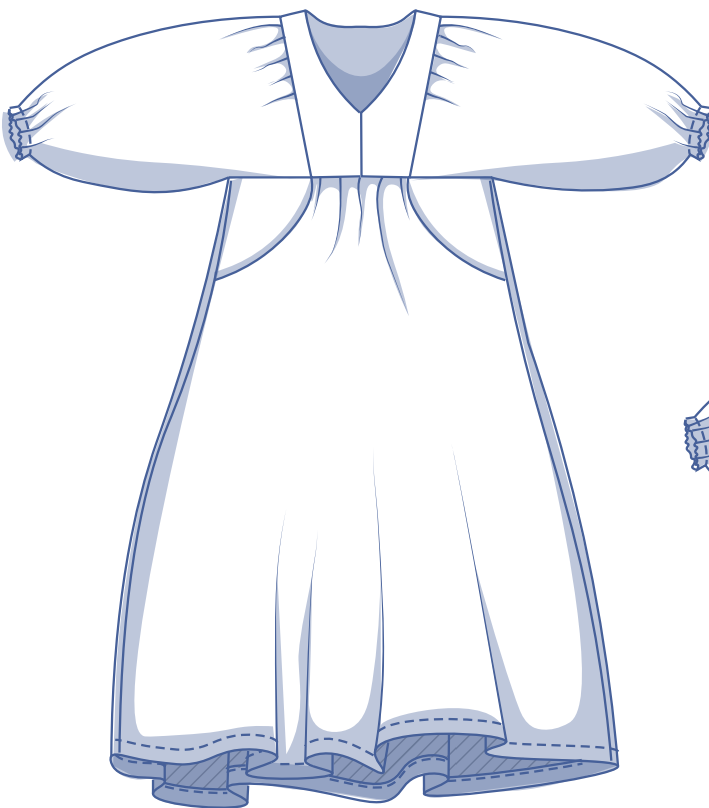


Kika by Fibre Mood



XS - XXXL

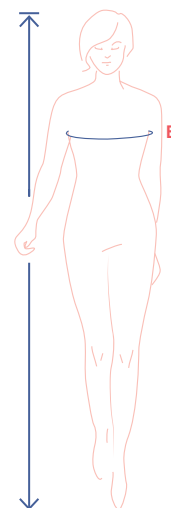
This empire waist dress is the epitome of comfort. The skirt features scooped pockets, gathers, and an elegant A-line. The V-neck makes your neck look longer. The shaped sleeves provide visual allure with gathers at the top and tapered elastic wrist cuff that you can turn up for a lovely puff effect. Kika looks a treat in many different fabrics and lengths.



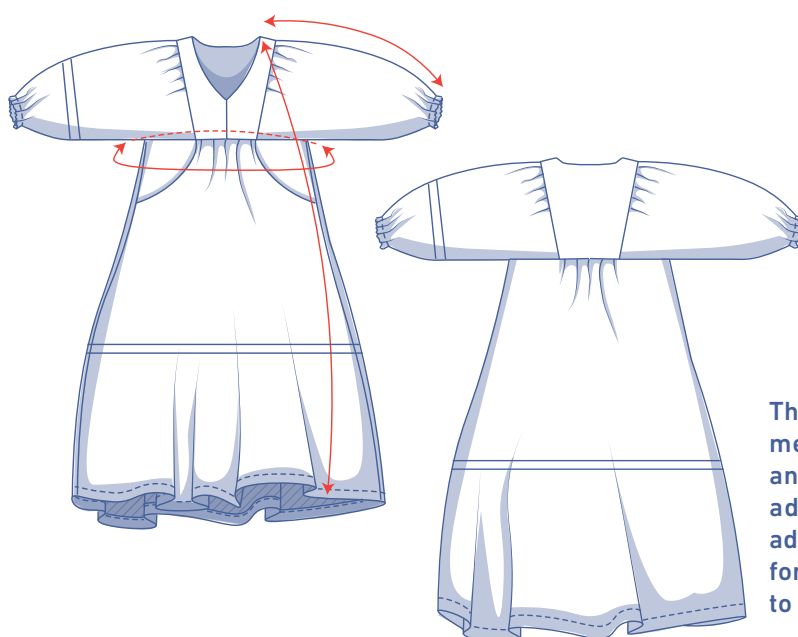
size chart (in inches)

size	XS		S		M		L		XL		XXL		XXXL		
	0	2	4	6	8	10	12	14	16	18	20	22	24	26	28
body height	5' 25"	5' 38"	5' 45"	5' 48"	5' 51"	5' 54"	5' 58"	5' 61"	5' 64"	5' 64"	5' 64"	5' 64"	5' 64"	5' 64"	5' 64"
B (bust)	29.9	31.5	33.1	34.6	36.2	37.8	39.4	40.9	43.3	45.7	48	50.4	52.8	55.1	57.5

Choose your size based on your **bust measurement**. Pick the size that is the best match for your bust.



pattern measurements (in inches)



== shorten or lengthen the pattern here

This chart's measurements are the pattern measurements based on the fabric type and serve as a reference. Ease has been added to the width measurements (in addition to the exact body measurements) for a more comfortable fit. Kika is designed to have a **loose cut**.

size	XS	S	M	L	XL	XXL	XXXL
length	46.4	46.8	47.3	47.7	48.7	49.4	50.0
sleeve length*	23.0	23.7	24.3	25.0	25.7	26.4	27.1
bust	36.5	39.7	42.8	46.0	49.9	54.7	59.4

* Including the shoulder length.

Compare the stated lengths to the measured or desired lengths. **Lengthen** or **shorten** the dress and/or sleeves by cutting the pattern pieces at the indicated double lines. Then either increase the distance between the cut pieces by the desired amount (to lengthen) or overlap the pieces (to shorten). Make sure that the CF and CB lines and the side seams are always straight.



IMPORTANT

Adjust the amount of fabric to be used based on these alterations.

notions



- Thread
- Iron-on interfacing: max. 20"
- Elastic (width $\frac{3}{8}$ "): see table
- Fabric: see table

elastic		XS	S	M	L	XL	XXL	XXXL
length per sleeve hem	yd	0.26	0.27	0.28	0.30	0.31	0.32	0.33
total length	yd	0.52	0.55	0.57	0.59	0.61	0.63	0.66

* The measurements stated (including overlap) for the elastic are only a suggestion and depend on the level of stretch in your elastic and your own preference. Check the length before you cut and be sure to add 3 cm overlap to the final measurement.

fabric use		XS	S	M	L	XL	XXL	XXXL
fabric width 43"	yd	4 $\frac{1}{2}$	4 $\frac{3}{4}$	5	5 $\frac{1}{4}$	5 $\frac{1}{2}$	5 $\frac{3}{4}$	6 $\frac{1}{4}$
fabric width 55"	yd	4 $\frac{1}{2}$	4 $\frac{1}{2}$	4 $\frac{5}{8}$	4 $\frac{5}{8}$	4 $\frac{3}{4}$	5 $\frac{1}{4}$	5 $\frac{1}{2}$

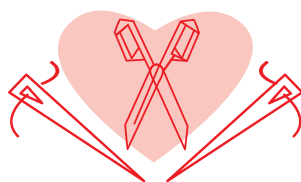
The corresponding fabric layout can be found on page 6 of these sewing instructions.

fabric advice



When selecting a fabric for Kika, you're spoilt for choice. Just to name a few ... flannel, seersucker, lyocell, poplin, chambray, linen, double gauze, woven jacquard, viscose (crepe), and broderie anglaise.

Proud to be #Sewista



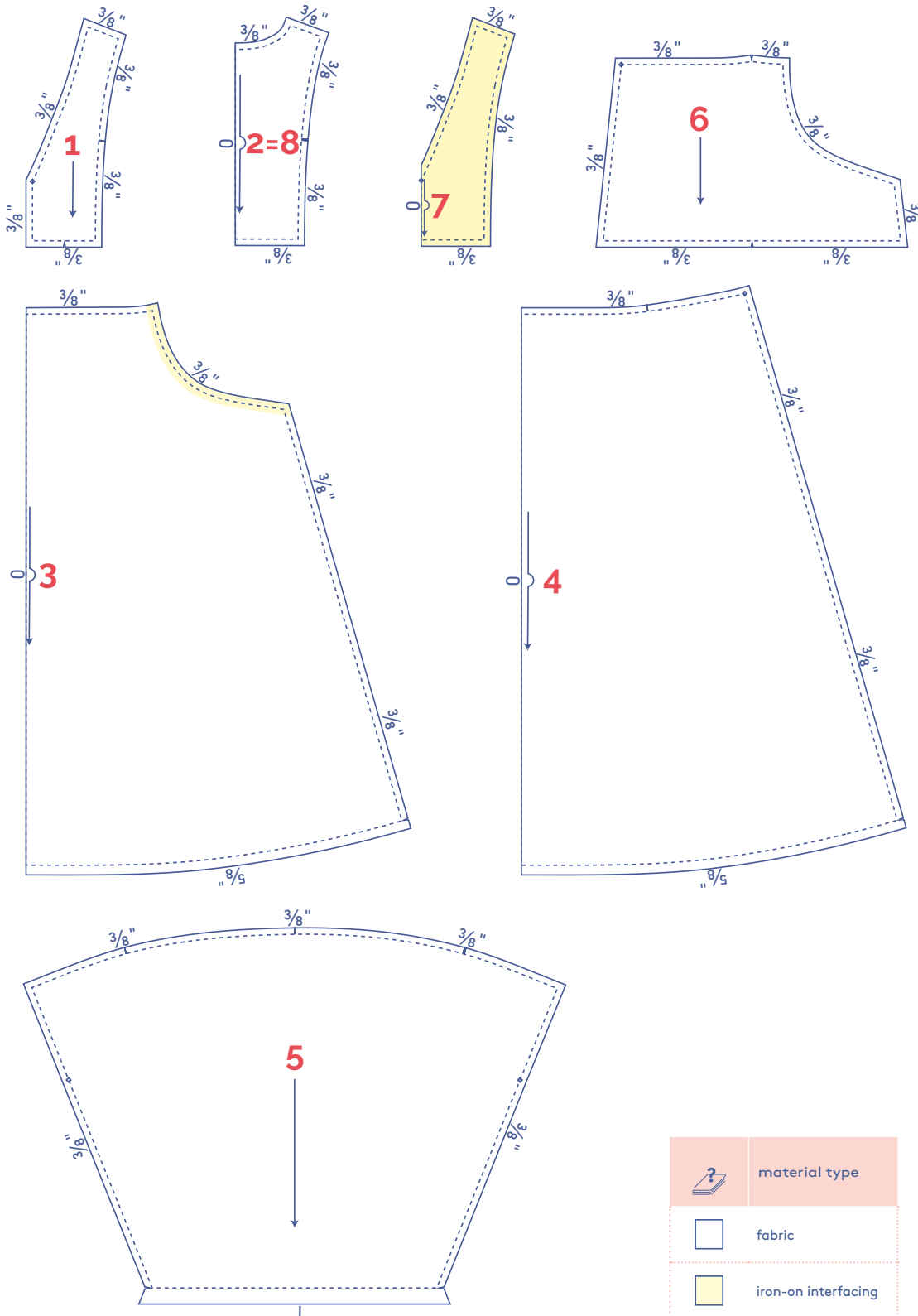
pattern pieces & seam allowances (in inches)

To sew the garment as described in the instructions, draw the illustrated seam allowances around the paper pattern pieces before cutting them out. If you are using a PDF pattern, the pattern can be printed with or without seam allowance. To find out more, watch the [video](#).

1. front: 2x
2. back: 1x on fabric fold
3. skirt front: 1x on fabric fold
4. skirt back: 1x on fabric fold
5. sleeve: 2x
6. pocket: 2x
7. facing front: 1x on fabric fold
8. facing back: 1x on fabric fold

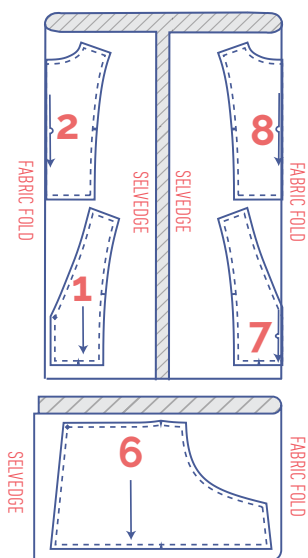
IMPORTANT

Pattern pieces 2 and 8 are the same.

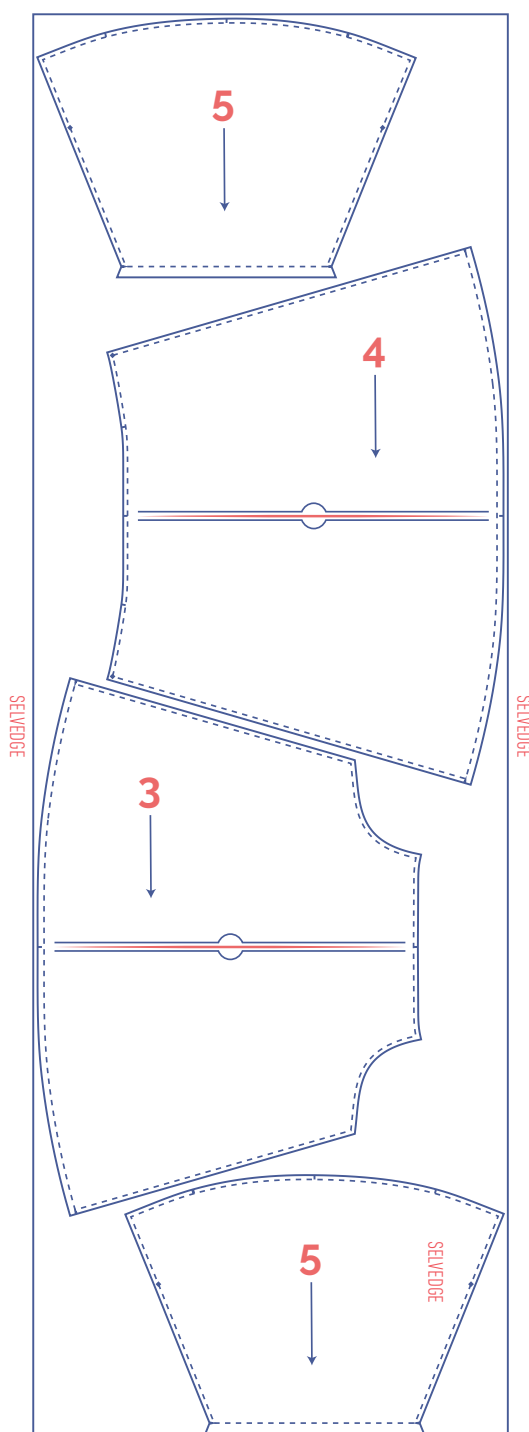


fabric layout – solid fabrics fabric width 43"

XS - M



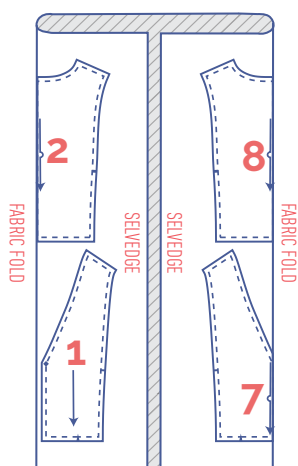
+



IMPORTANT

Because the fabric is opened out and single layer, you will also need to cut-to-mirror pattern piece 5. That's because you need a left and right sleeve.

Pattern pieces 3 and 4 have been rotated at a 90° angle to fit the fabric width. This may cause problems if you are working with patterned or napped fabric.

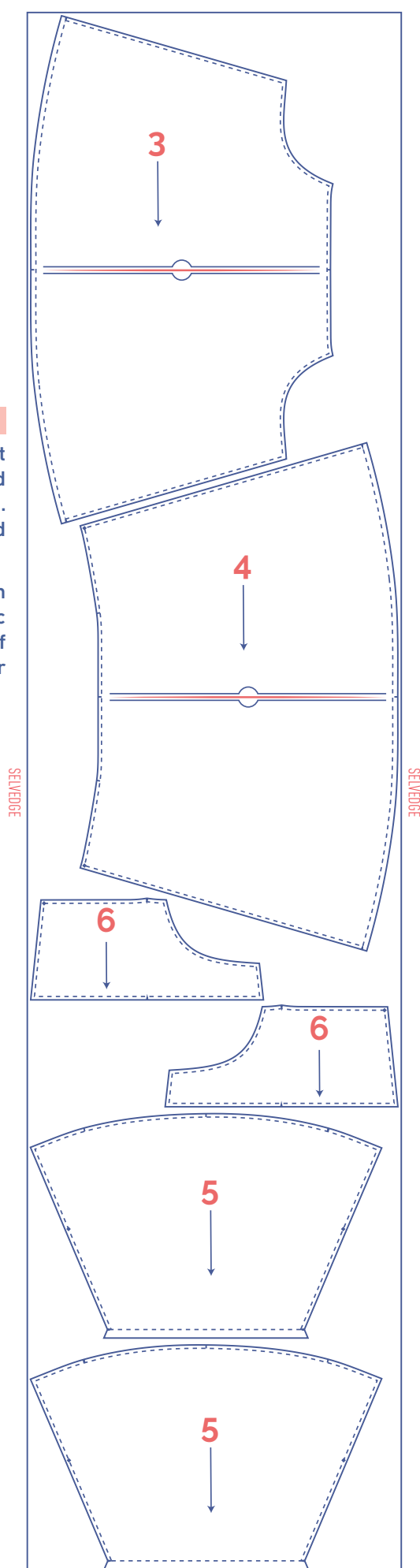


+

IMPORTANT

Because the fabric is opened out and single layer, you will also need to cut-to-mirror pattern piece 5. That's because you need a left and right sleeve.

Pattern pieces 3 and 4 have been rotated at a 90° angle to fit the fabric width. This may cause problems if you are working with patterned or napped fabric.

**marking pattern pieces**

Notch the pattern paper and fabric at the following points



single notch



double notch



V-notch/fabric fold



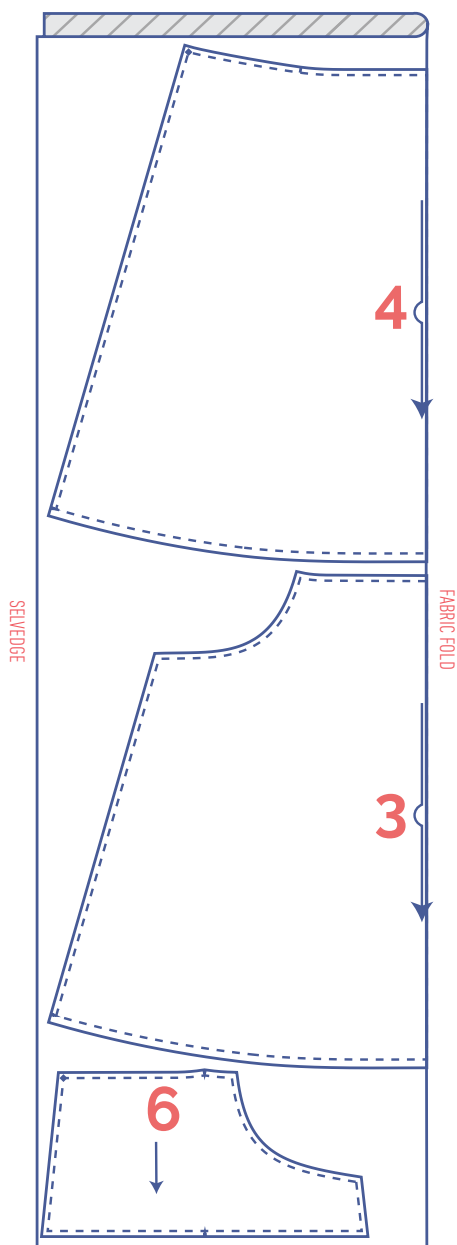
Mark the following points with marking thread



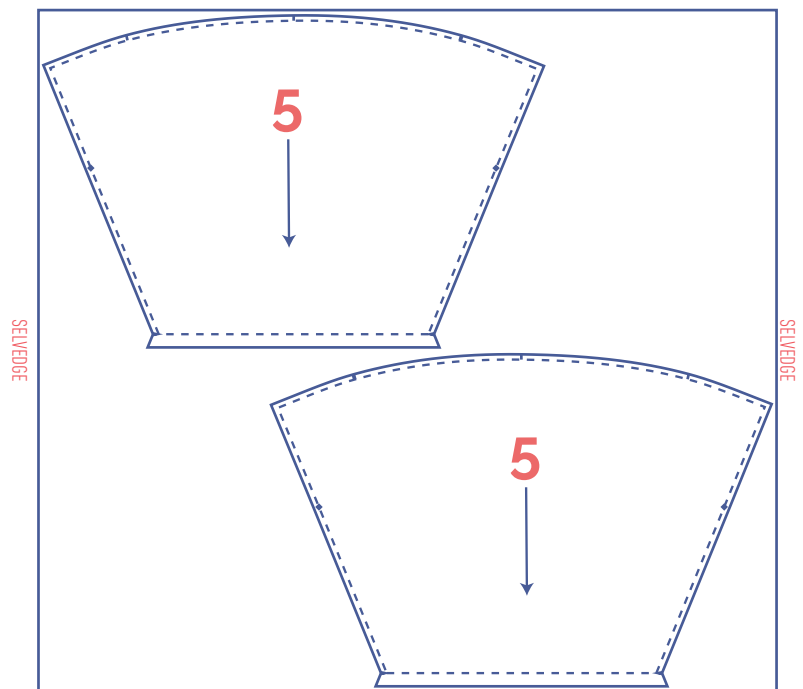
centre point

fabric layout – solid fabrics fabric width 55"

XS - XL

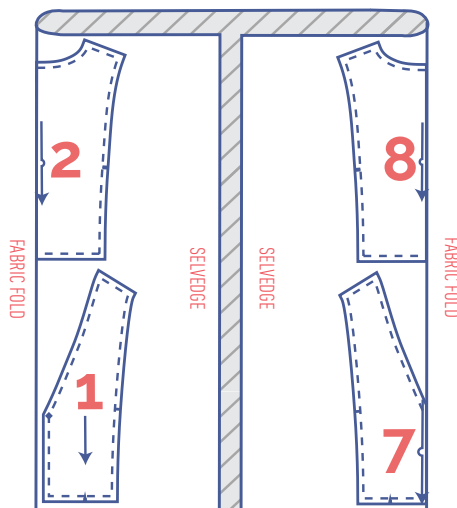


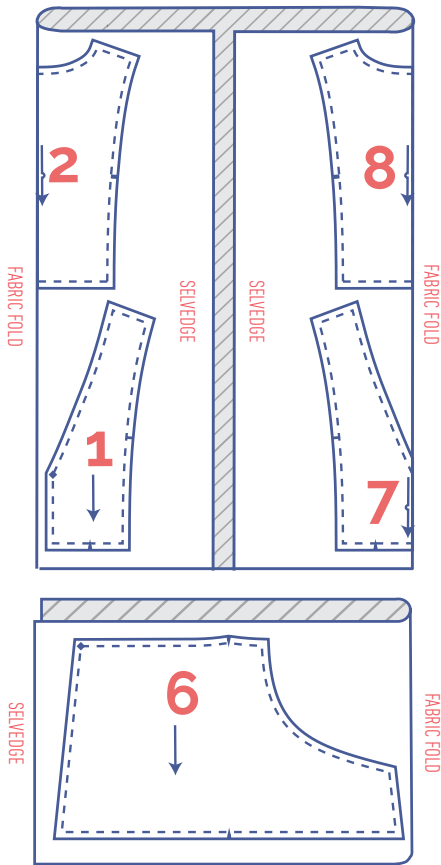
+



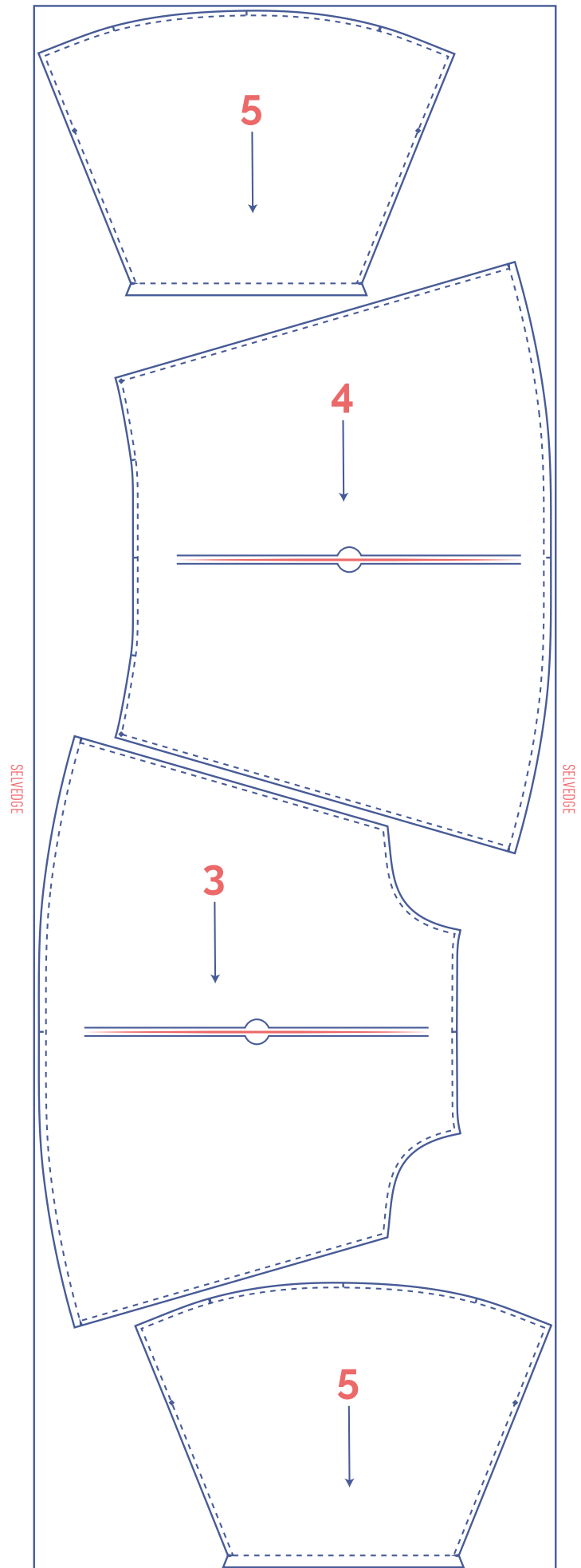
IMPORTANT

Because the fabric is opened out and single layer, you will also need to cut-to-mirror pattern piece 5. That's because you need a left and right sleeve.





+



marking pattern pieces



Notch the pattern paper and fabric at the following points

| single notch

|| double notch

V V-notch/fabric fold



Mark the following points with marking thread



centre point

sewing instructions



The method used to finish the seams depends on the fabric used.
The pieces are always sewn together with the right sides of the fabric facing, unless stated otherwise.

F front

B back

CF centre front

CB centre back

 right side

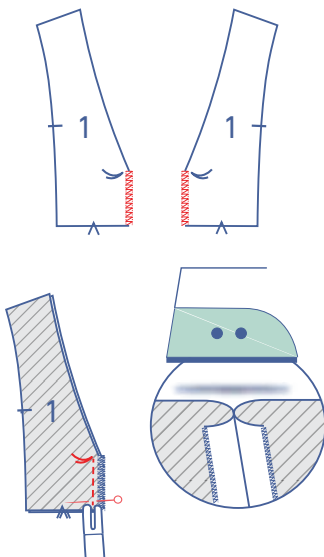
 wrong side

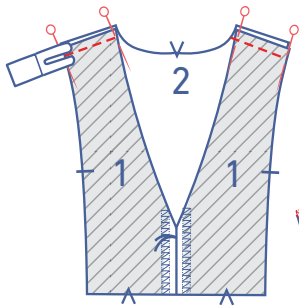
 iron-on interfacing

1

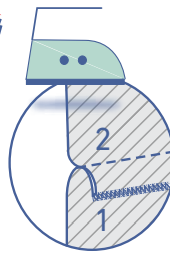
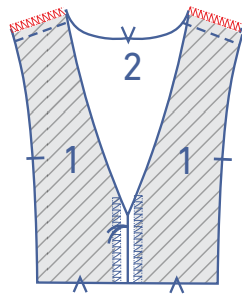
Finish the raw edges of the front (1) where indicated with overlock stitching.

Pin and sew the CF seam up to the marking thread. Press the seam allowance open.

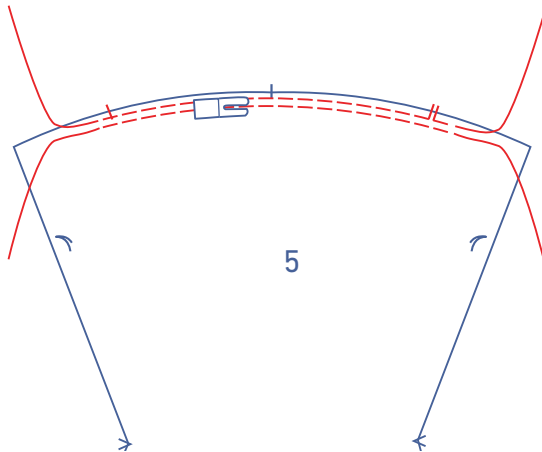




Pin and sew the shoulder seams of the front and back (2) together.

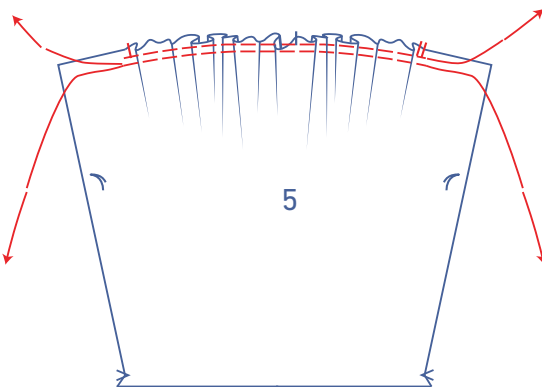


Finish the raw edges with overlock stitching. Press the seam allowance towards the front.

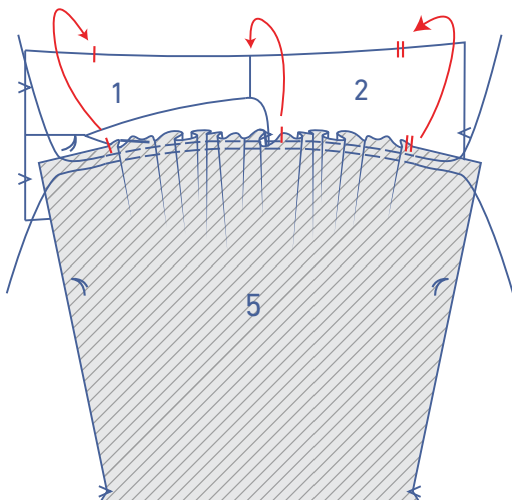


2

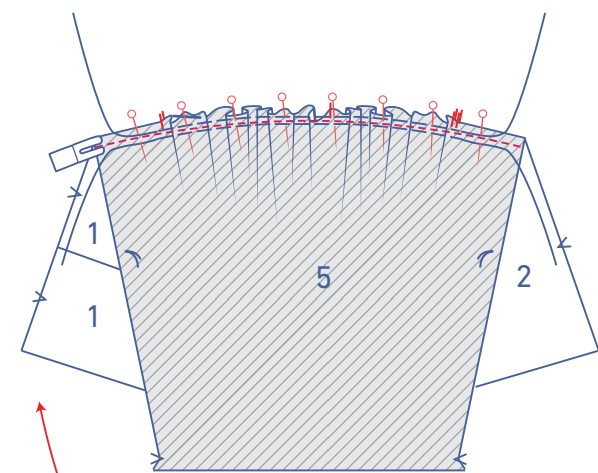
Sew the top of the sleeve (5) between the indicated notches with two parallel rows of stitching. Use a long stitch length at a low thread tension. Leave a length of thread at the start and end of your stitching.



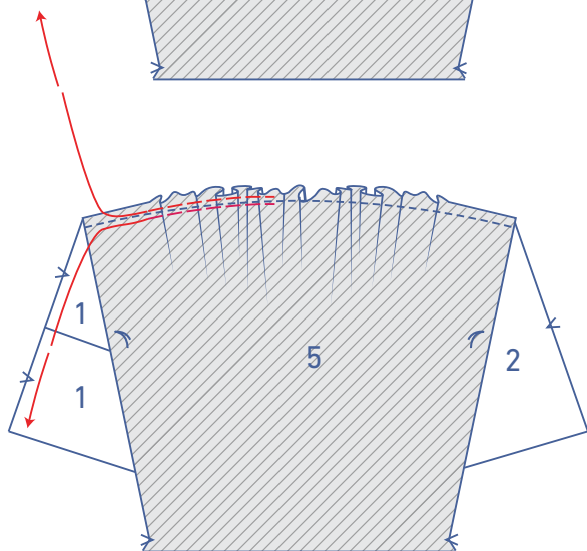
Gently tug the ends of the threads to gather the fabric.



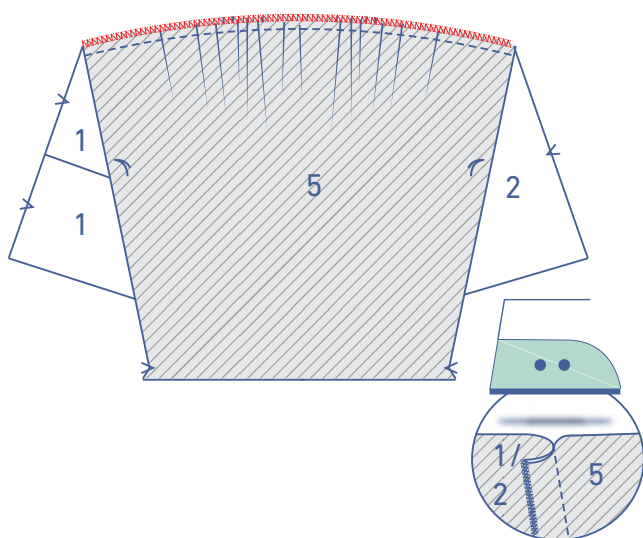
Pin the sleeve to the armhole, distributing the gathers until the markings match. The centre single notch in the sleeve matches the shoulder seam.



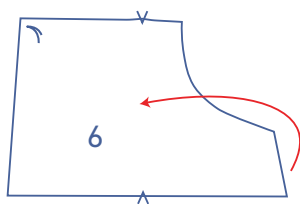
Sew into place.



Remove the gathering threads.

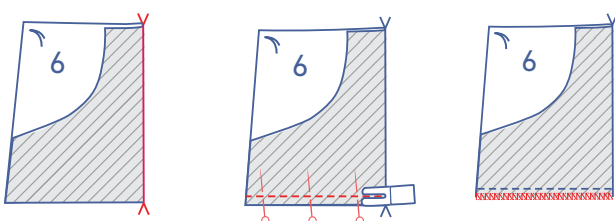


Finish the raw edges with overlock stitching. Press the seam allowance towards the front and back.



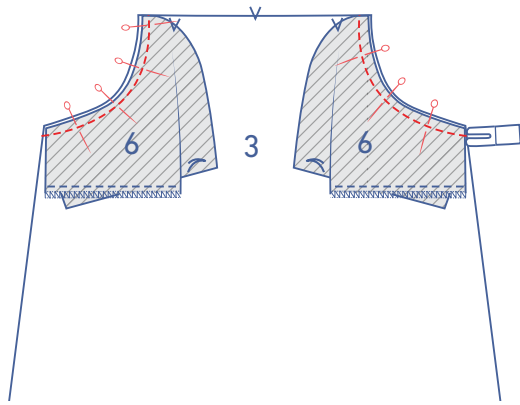
3

Fold the pocket (6) in half at the V notches at the top and bottom with the right sides together.

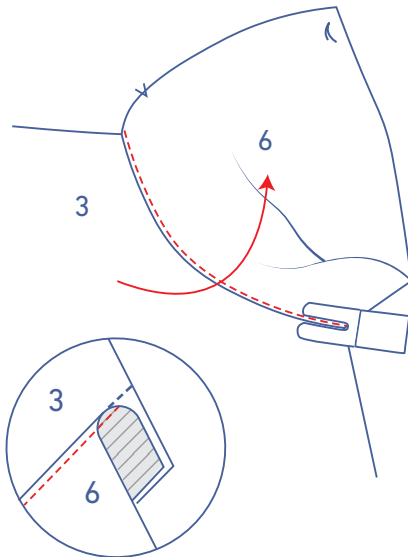


Pin and sew the bottom.

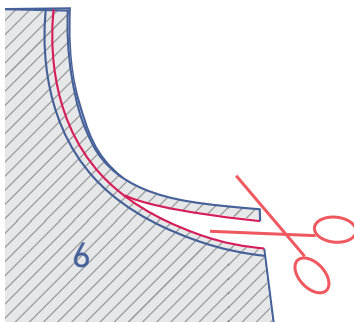
Finish the raw edges with overlock stitching.



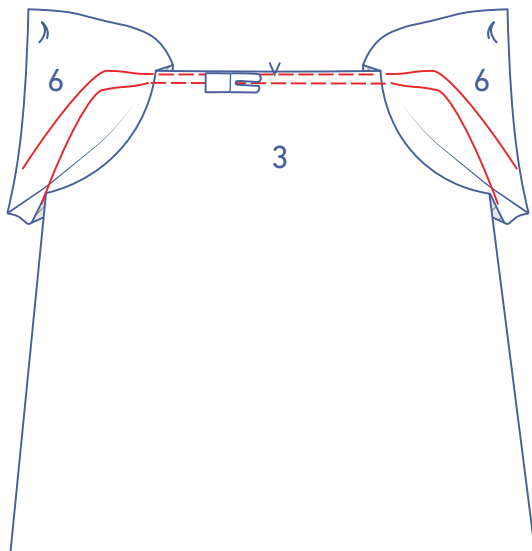
Pin and sew the curved edge of the pocket to the curved edge of the front skirt piece (3).



Fold the pocket over and sew the pocket right next to the seam (pocket+ underlying seam allowance), anchoring all 3 layers of fabric.

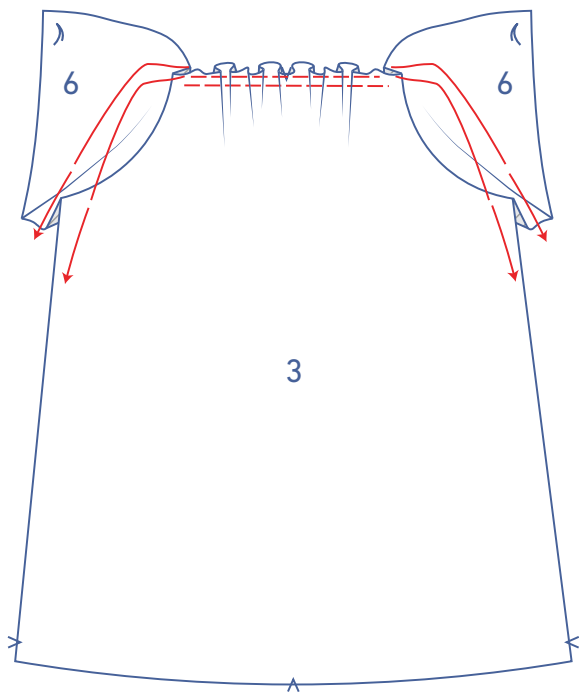


Trim the seam allowance to allow the curved edge to lie flat.

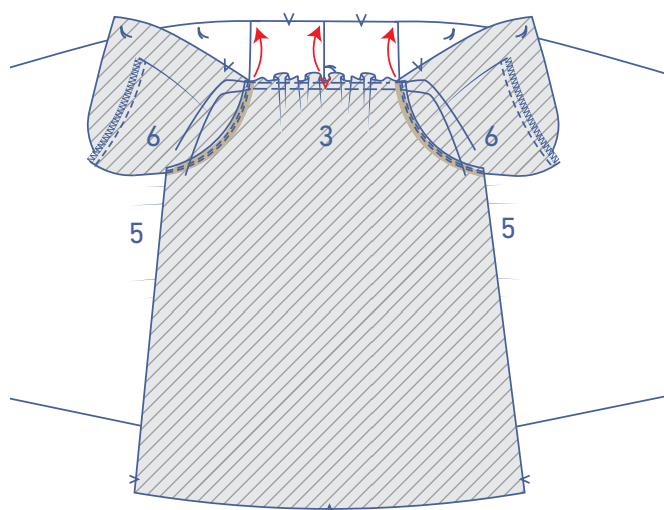


4

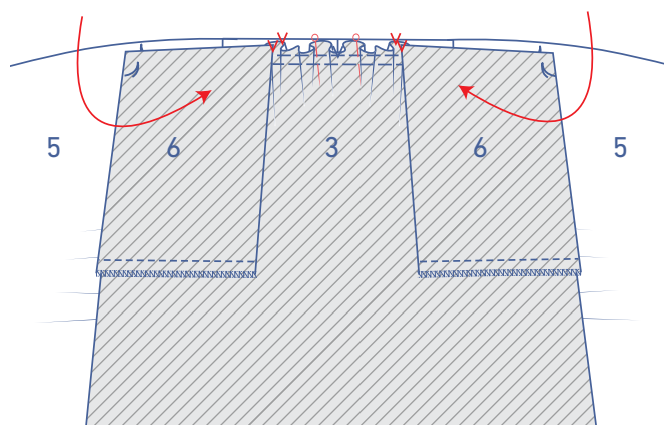
Fold the pocket pieces over. Sew the top of the front skirt piece with two parallel rows of stitching, using a long stitch at a low thread tension. Leave a length of thread at the start and end of your stitching.



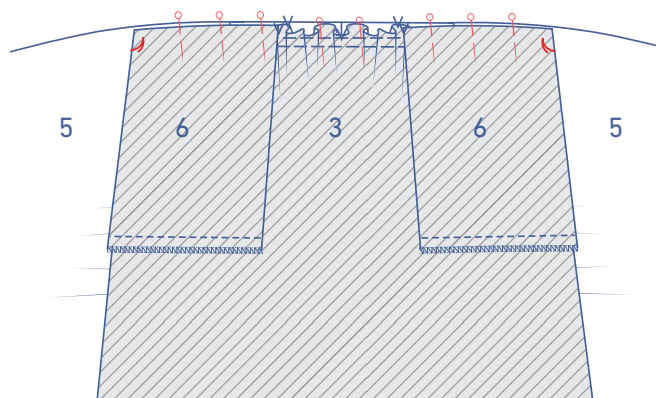
Gently tug the ends of the threads to gather the fabric.



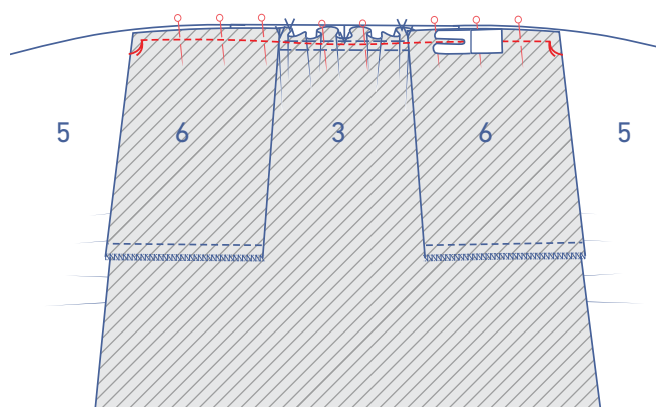
Pin the top of the skirt to the bottom of the bodice front, distributing the gathers until the markings match. The seams of the pocket matches the sleeve seam, and the V notch in the skirt matches the CF.



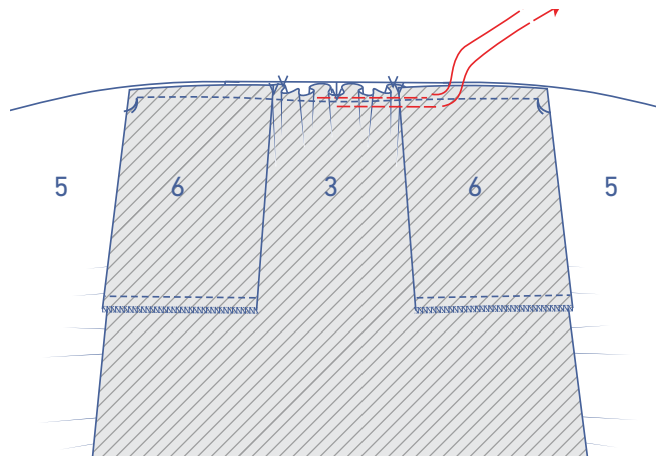
Fold the pocket pieces towards the wrong side of the skirt so that the V notch in the pocket matches the V notch in the bottom of the bodice front.



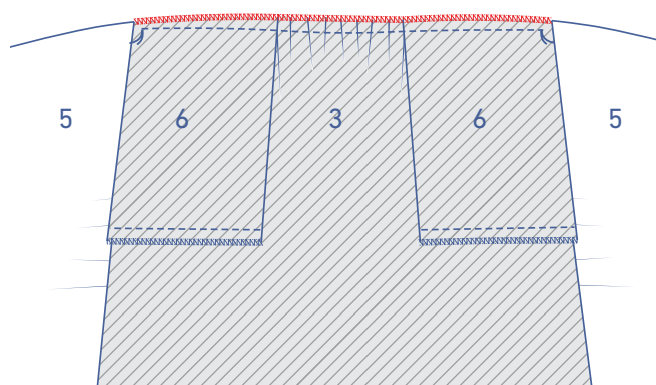
Pin the pocket to the front and the sleeves with the marking threads matching.



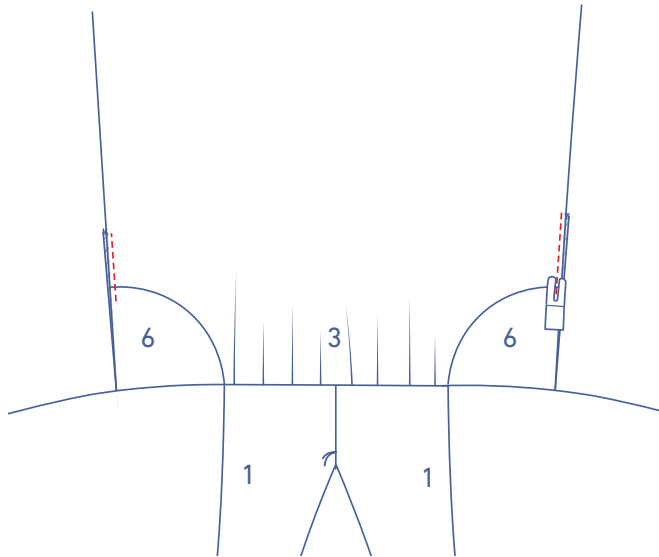
Sew the skirt and pockets to the bodice front and sleeves between the marking threads.



Remove the gathering threads.

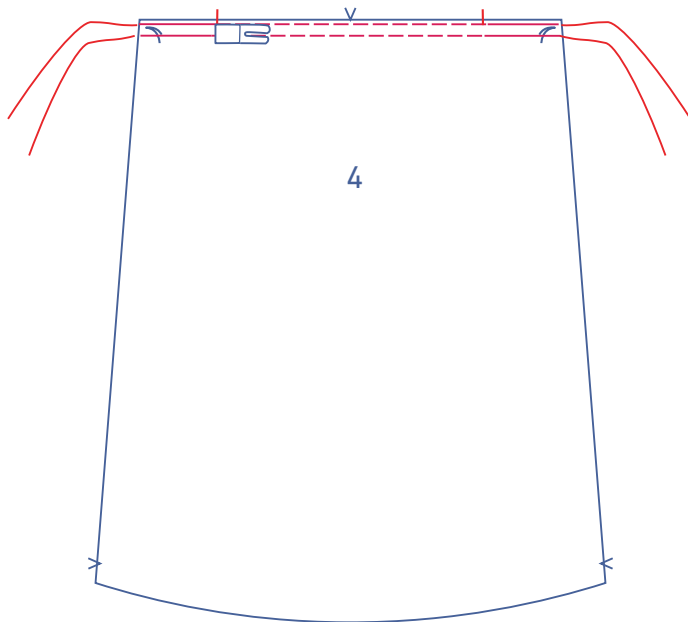


Finish the raw edges with overlock stitching.

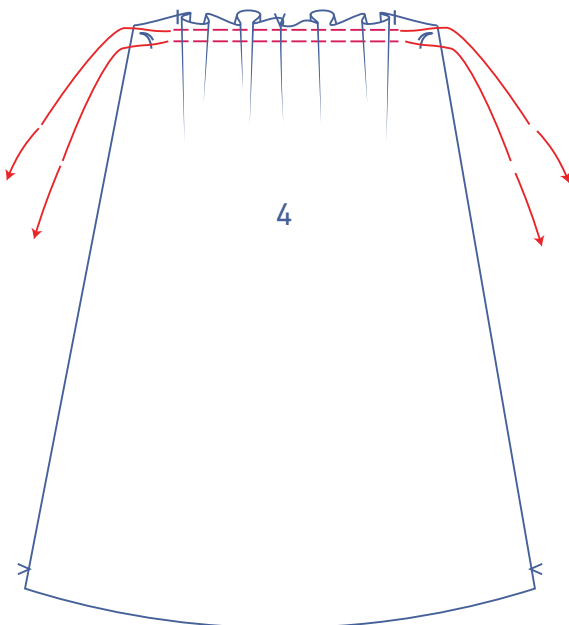


Arrange the pockets into their final position relative to the sides of the front skirt. Tack into place at presser foot width from the raw edge.

5

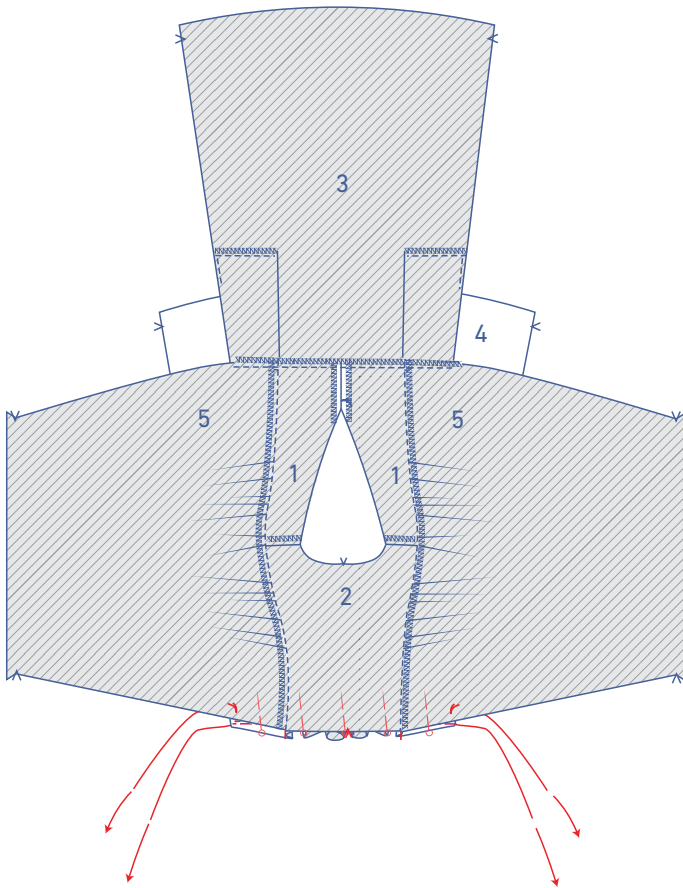


Using a long thread length at a low thread tension, sew two parallel lines along the top of the skirt piece back (4) until just past the single notches. Leave a length of thread at the start and end of your stitching.

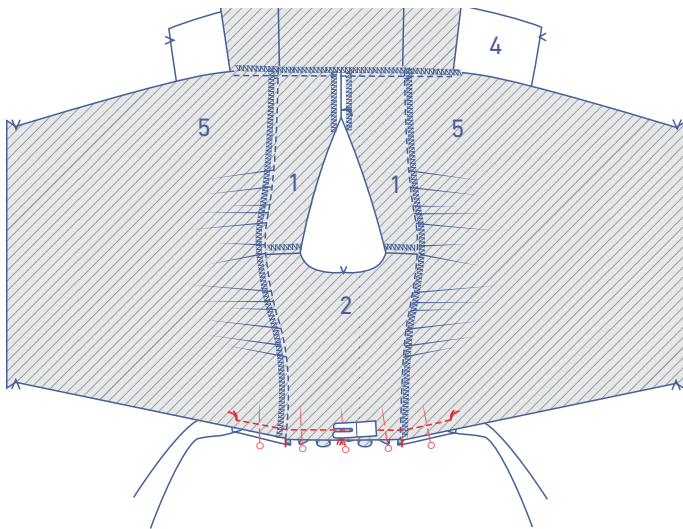


Gently tug the ends of the threads to gather the fabric.

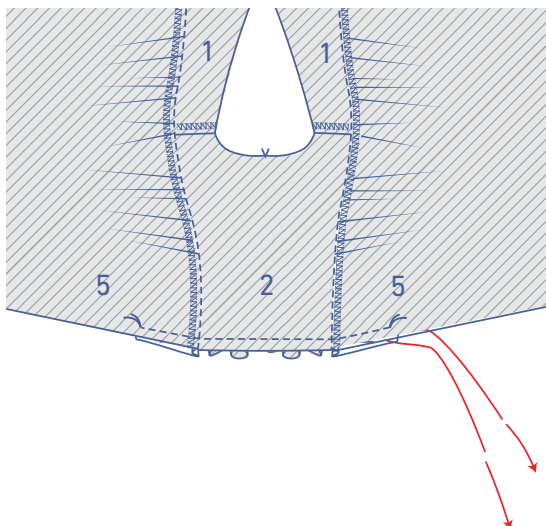
Pin the top of the back skirt to the bottom of the bodice back and sleeves, distributing the gathers until the markings match. The single notches in the skirt should match the sleeve seams (2+5).

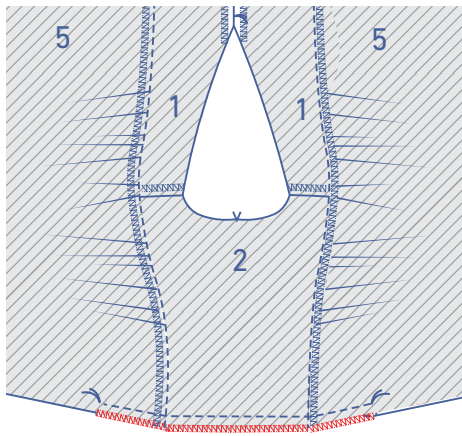


Sew into place between the marking threads.



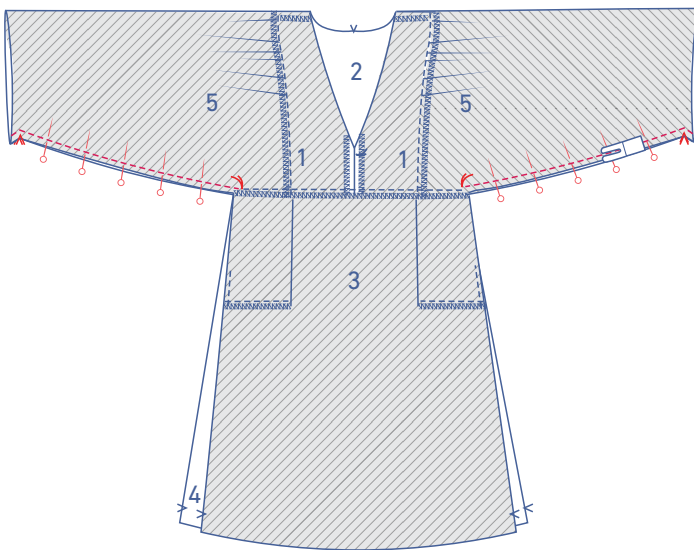
Remove the gathering threads.



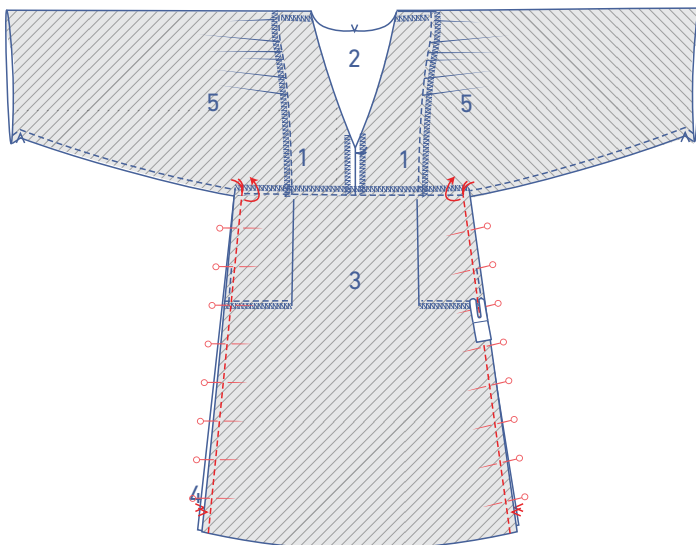


Finish the raw edges with overlock stitching.

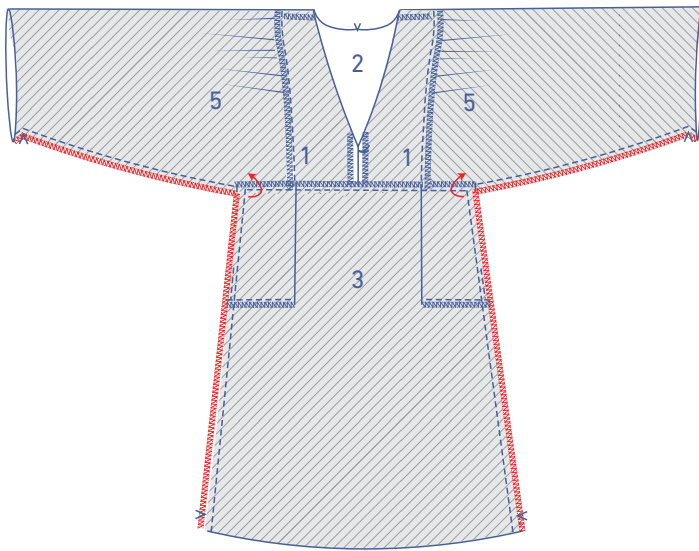
6



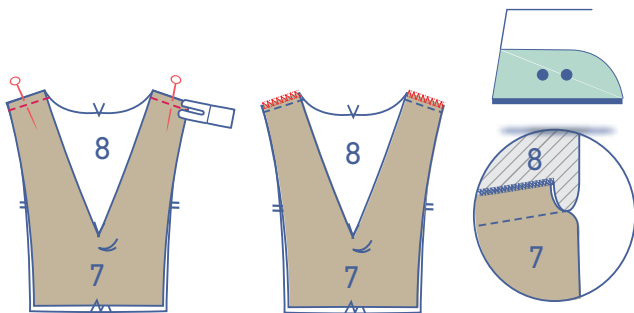
Pin and sew each underarm seam from the sleeve hem to the marking thread.



Pin and sew the side seam from the marking thread to the hem. You will need to fold the seam allowance of the skirt waist seam out of the way to do this.



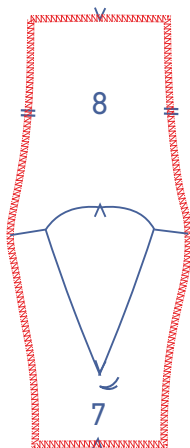
Finish the raw edges of the underarm and side seams in one go with overlock stitching, making sure you fold the seam allowance of the skirt waist seam out of the way as needed.



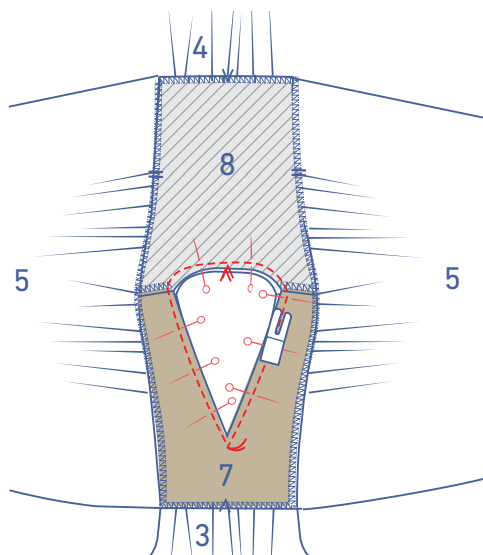
7

Pin the shoulder seams of the front facing (7) and back facing (8) together and sew.

Finish the raw edges with overlock stitching. Press the seam allowance towards the back facing.

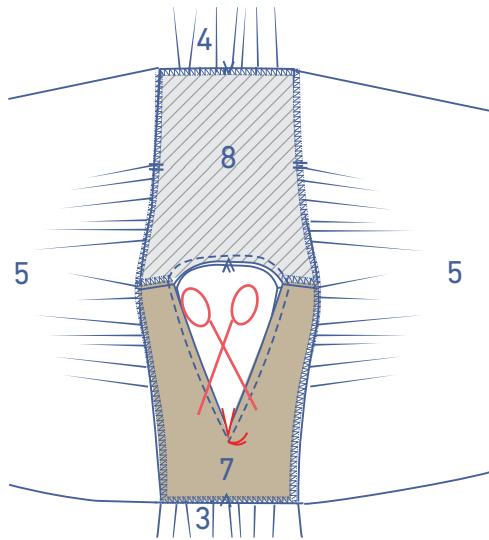


Overlock the outer edge of the facing where indicated.

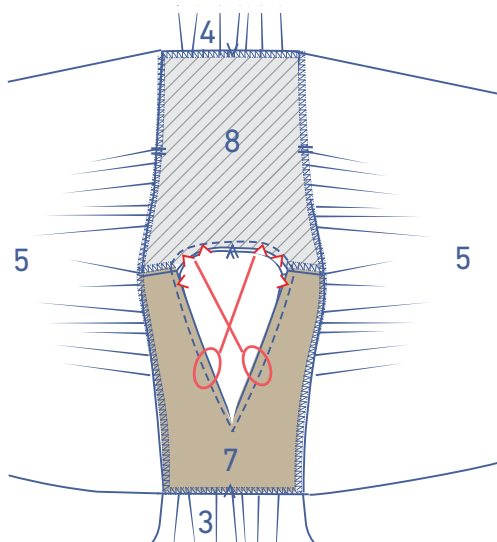


8

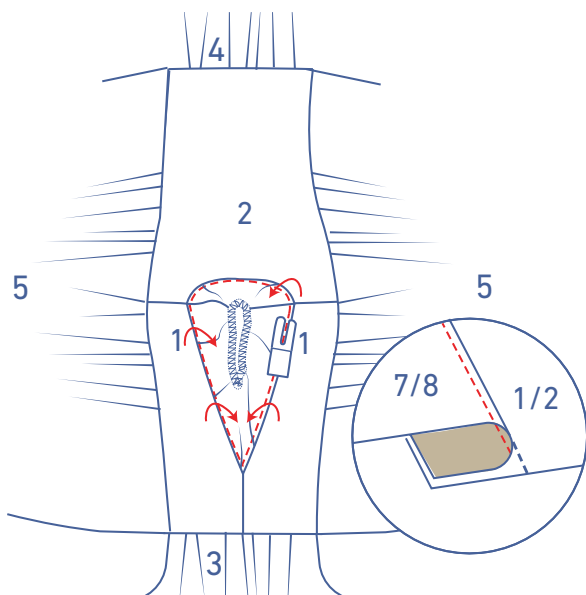
Pin and sew the neckline facing to the neckline of the front and back, right sides together. Sew parallel to the contours of the V-shaped neckline up to the marking thread. At the tip of the V, make sure to shift the seam allowance of the CF seam and the bodice front out of the way.



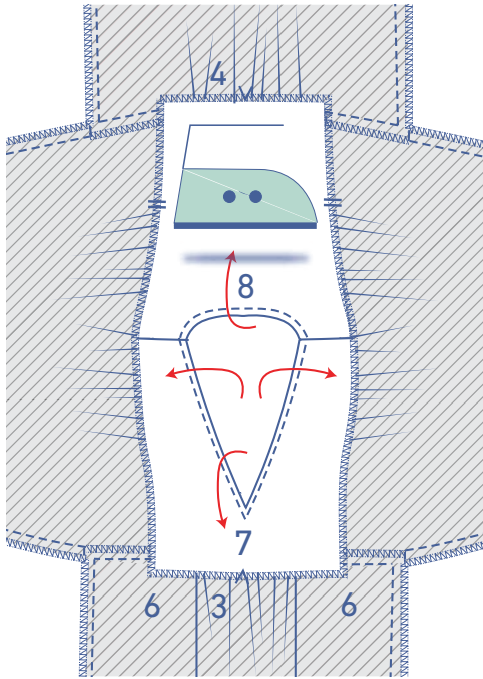
Snip (only) into the facing's seam allowance at the tip of the V until just before the marking thread.



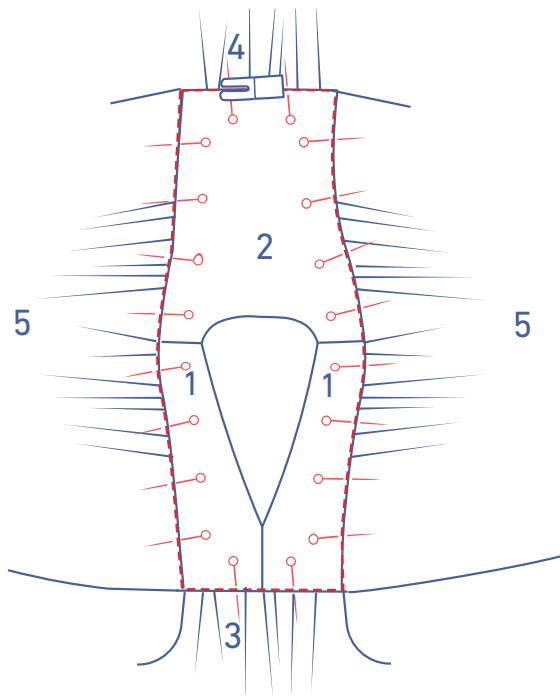
Notch the seam allowance to allow the neckline to lie flat later.



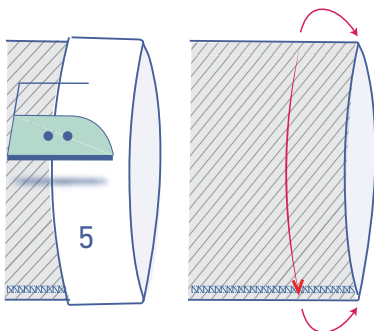
Fold the facing over and sew the facing right next to the seam (facing + underlying seam allowance), anchoring through all layers of fabric.



Press the facing neatly towards the wrong side.

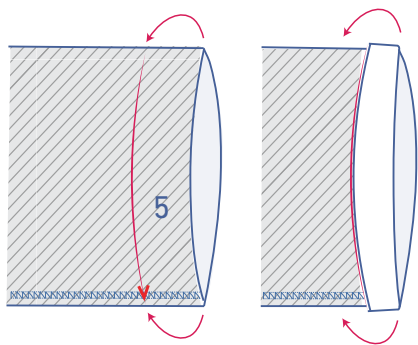


Pin the facing into place along the right side. Stitch in the ditch.

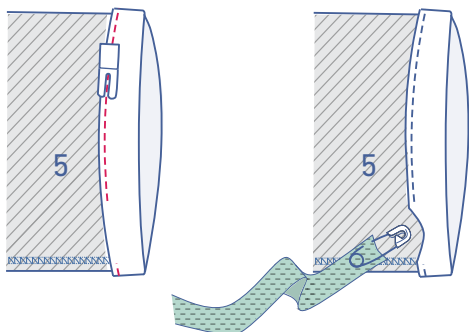


9

Turn the sleeve hem allowance up towards the wrong side, press, and open back out.

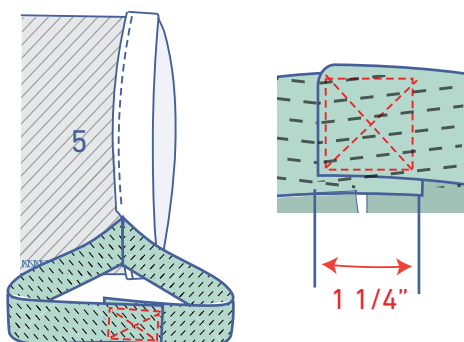


Fold the raw edge to the pressed fold line and then fold over again.

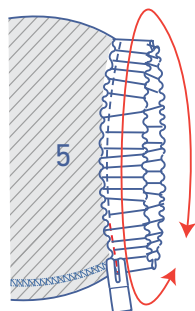


Edgestitch into place, leaving a gap through which to thread the elastic later.

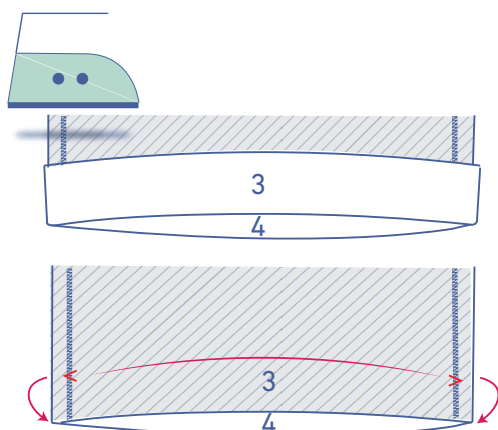
Thread the elastic at the sleeve hem through the casing. Pull the elastic through the casing and sew the opening closed.



Overlap 1 1/4" of the ends and sew into place with a Box X stitch.

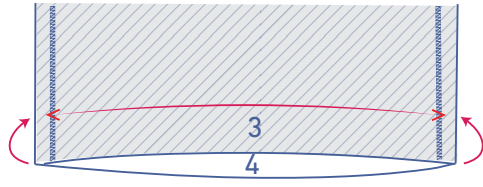


Tuck the elastic neatly back into the casing and sew the opening closed.

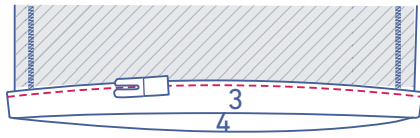
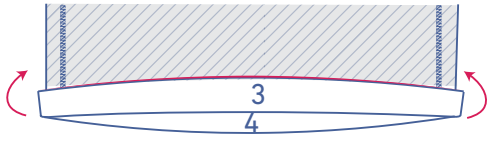


10

Turn the skirt's hem allowance up towards the wrong side, press, and open back out.



Fold the raw edge to the pressed fold line and then fold over again.



Edgestitch into place.