

Claudie by Fibre ⚡ood

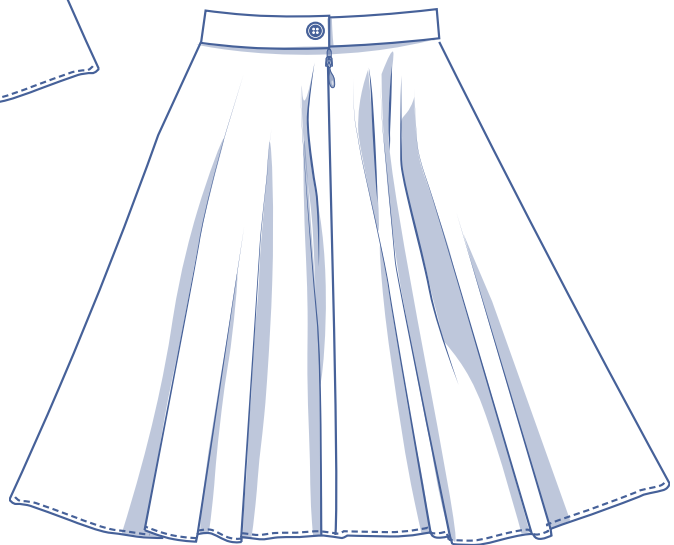
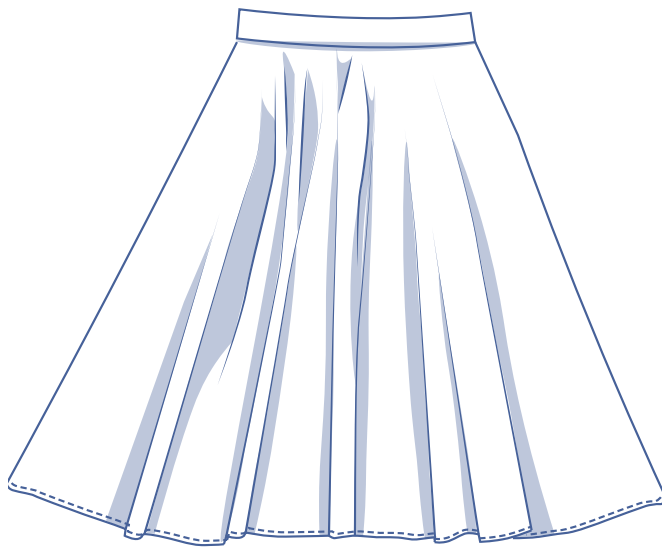


Claudie by Fibre Mood



4 - 30

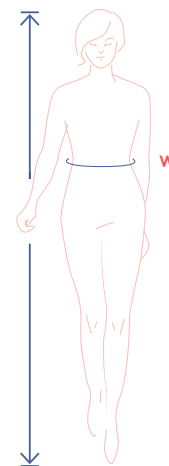
Claudie is swingin', and not just a little! Claudie is pure rock 'n 'n roll with a 360° swirl. She features a high waist with a straight waistband, invisible zip closure and handy hidden pockets in the side seams! Here at Fibre Mood, we went for mid-length, but Claudie can easily be made shorter or longer. From needle to thread, we show you how on www.fibre mood.com. And there you have it, we've come full circle. Time to twirl!



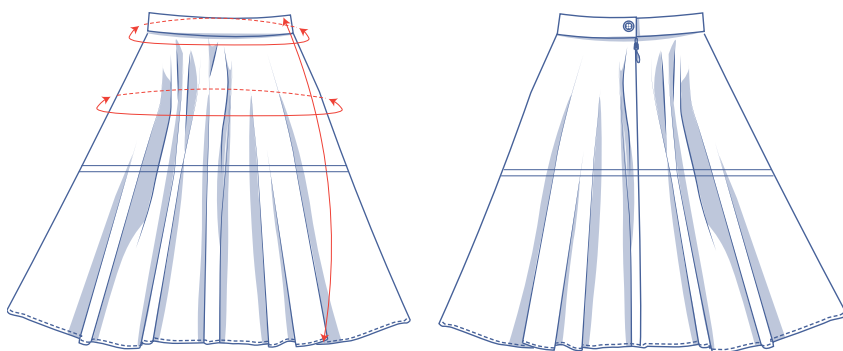
size chart (in cm)

size	4	6	8	10	12	14	16	18	20	22	24	26	28	30
body height	160	164	166	167	168	169	170	171	172	172	172	172	172	172
W (waist)	66	68	70	74	78	82	84	88	94.5	101	107.5	114	120.5	127

Choose your size based on your waistline measurement. Pick the size that is the best match for your waist.



pattern measurements (in cm)



— shorten or lengthen the pattern here

This chart's measurements are the pattern measurements based on the fabric type and serve as a reference. Ease has been added to the width measurements (in addition to the exact body measurements) for a more comfortable fit. Claudie is designed to have a fitted waist and be looser around the hips.

size	4	6	8	10	12	14	16	18	20	22	24	26	28	30
side length*	72	72.25	72.75	73	73.25	73.5	73.75	74.25	75.5	75.75	76	76.25	76.75	77
waistline measurement	66.25	68.25	70.25	74.25	78.25	82.25	84.25	88.25	94.75	101.25	107.75	114.25	120.75	127.25

* Including the waistband.

Compare the stated lengths to the measured or desired lengths. **Lengthen** or **shorten** the skirt by cutting the pattern pieces at the indicated double lines. Then either increase the distance between the cut pieces by the desired amount (to lengthen), or overlap the pieces (to shorten). Make sure that the CF and CB lines and the side seams are always straight.



IMPORTANT

Adjust the amount of fabric to be used based on these alterations.

supplies



- Thread
- Iron-on interfacing: max. 30 cm
- Button (Ø 2 cm): 1
- Invisible zip: 20 cm
- Fabric: see table

fabric		4	6	8	10	12	14	16	18	20	22	24	26	28	30
fabric width 110 cm/standard fabric layout	cm	310	310	315	320	325	325	330	335	345	350	355	365	370	375
fabric width 110 cm/alternative fabric layout*	cm	275	280	280	285	290	295	300	305	315	320	330	340	345	355
fabric width 140 cm/standard fabric layout	cm	260	265	265	270	275	280	285	290	305	310	320	325	330	340
fabric width 140 cm/alternative fabric layout*	cm	215	220	225	230	235	240	245	250	265	275	280	290	295	305

* We have given alternative layouts to reduce fabric consumption (this requires you to cut the fabric unfolded).

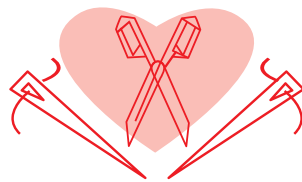
The corresponding fabric layouts can be found starting on page 6 of these sewing instructions.

fabric advice



The range of options when making Claudie are nearly endless as long as you pick something with no stretch. Get started with fabric with a fluid drape, e.g. viscose (satin) or viscose crepe. Or select something with more structure, such as poplin, baby rib corduroy, suede, denim, flannel, gabardine, or tweed. Solids and prints (e.g. floral, striped, check, etc.) both work. Keen to wear an ultra edgy skirt this winter? We've got one word for you. Leather! And for a party-ready version of the Claudie, lurex is where it's at.

Proud to be #Sewista



pattern pieces & seam allowances (in cm)

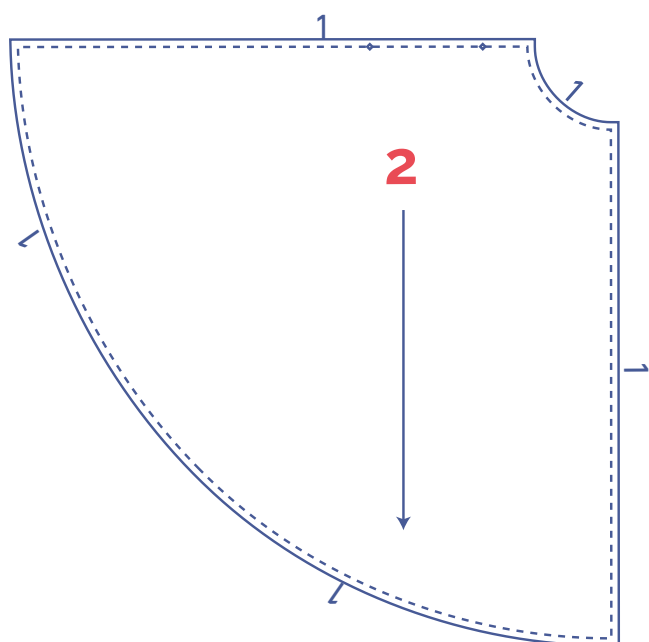
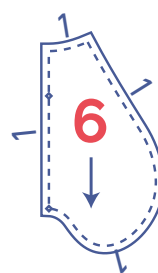
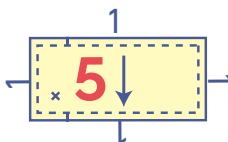
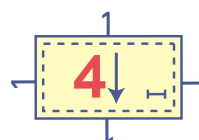
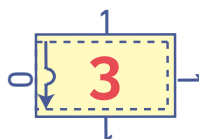
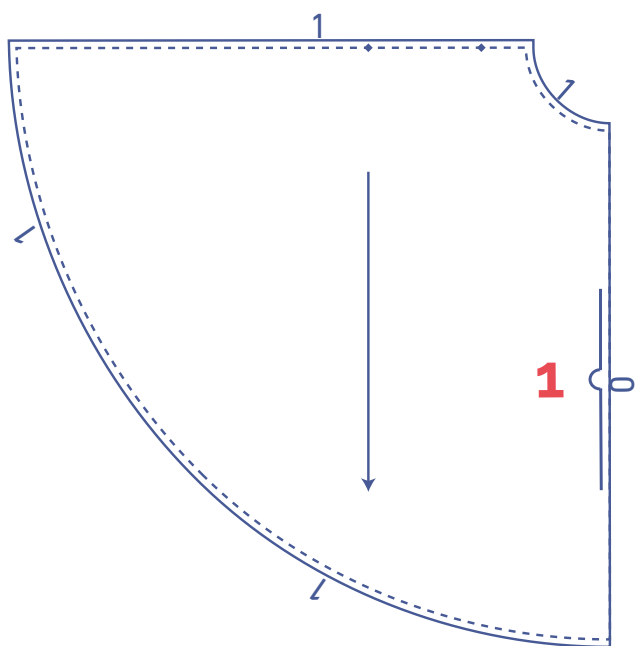
To sew the garment as described in the instructions, draw the illustrated seam allowances around the paper pattern pieces before cutting them out. If you are using a PDF pattern, the pattern can be printed with or without seam allowance.

To find out more, watch the [video](#).

1. front: 1x on fabric fold
2. back: 2x
3. waistband front: 1x on fabric fold
4. waistband LB: 1x
5. waistband RB: 1x
6. pocket: 4x




IMPORTANT

The pieces highlighted in light yellow have iron-on interfacing attached to the wrong side.



IMPORTANT

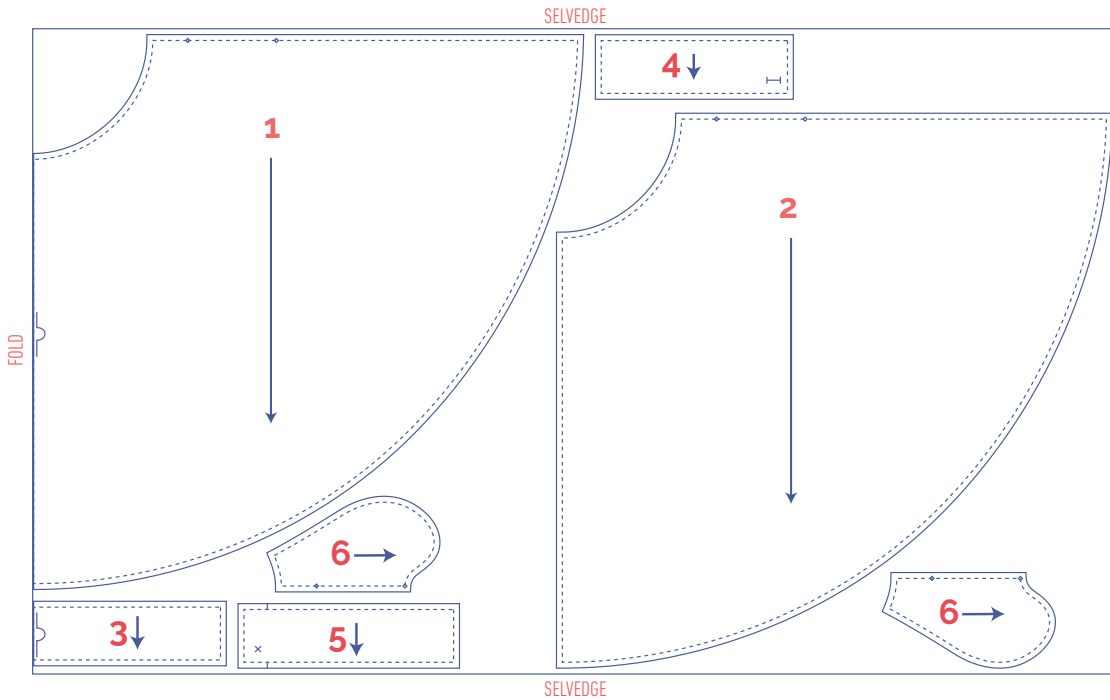
Pattern pieces 1 and 2 are the same pattern pieces.

 material type	
 fabric	
 iron-on interfacing	

fabric layout – solid fabrics

fabric width 110 cm

4 - 30



IMPORTANT

Pattern pieces 1, 2, 3, 4 and 5 are positioned in a different direction from piece 6.

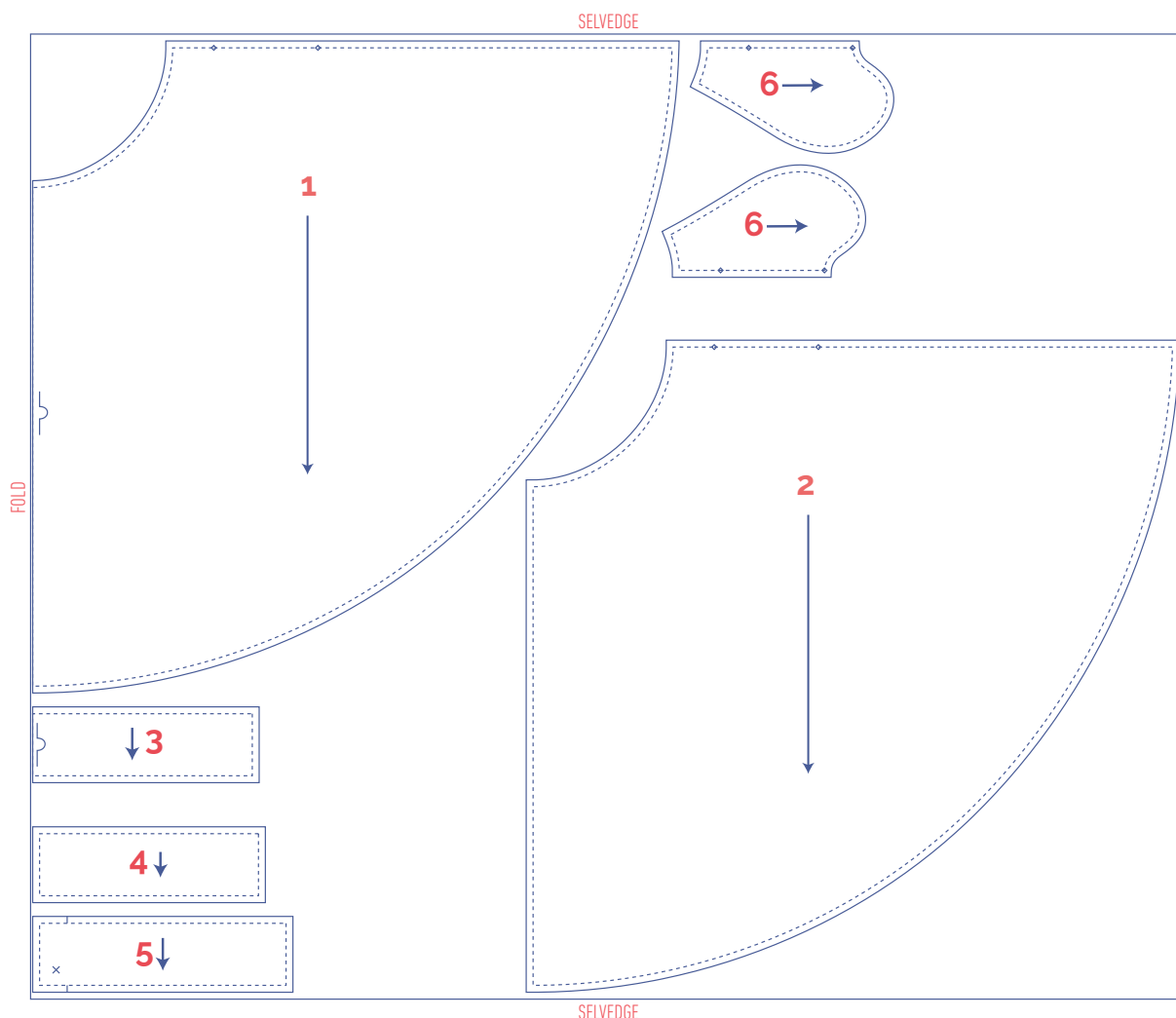
IMPORTANT

You only need pattern pieces 4 and 5 once.

fabric layout – solid fabrics

fabric width 140 cm

4 - 30



IMPORTANT

Pattern pieces 1, 2, 3, 4 and 5 are positioned in a different direction from piece 6.

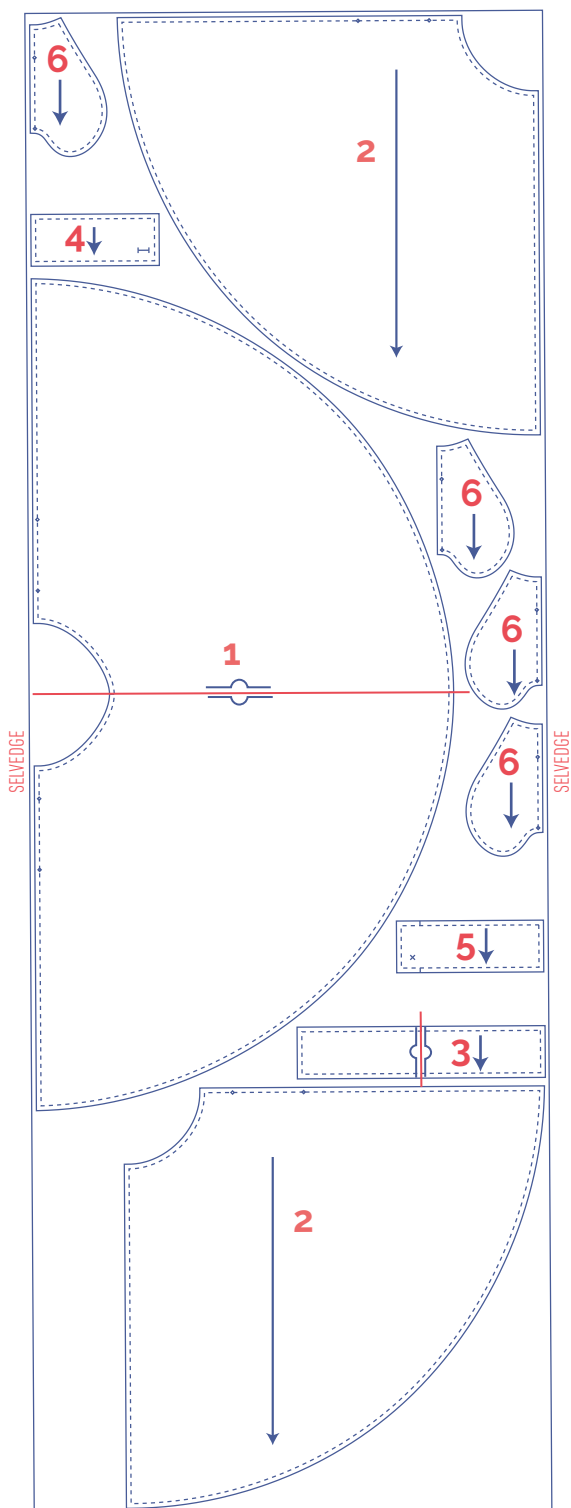
IMPORTANT

You only need pattern pieces 4 and 5 once.

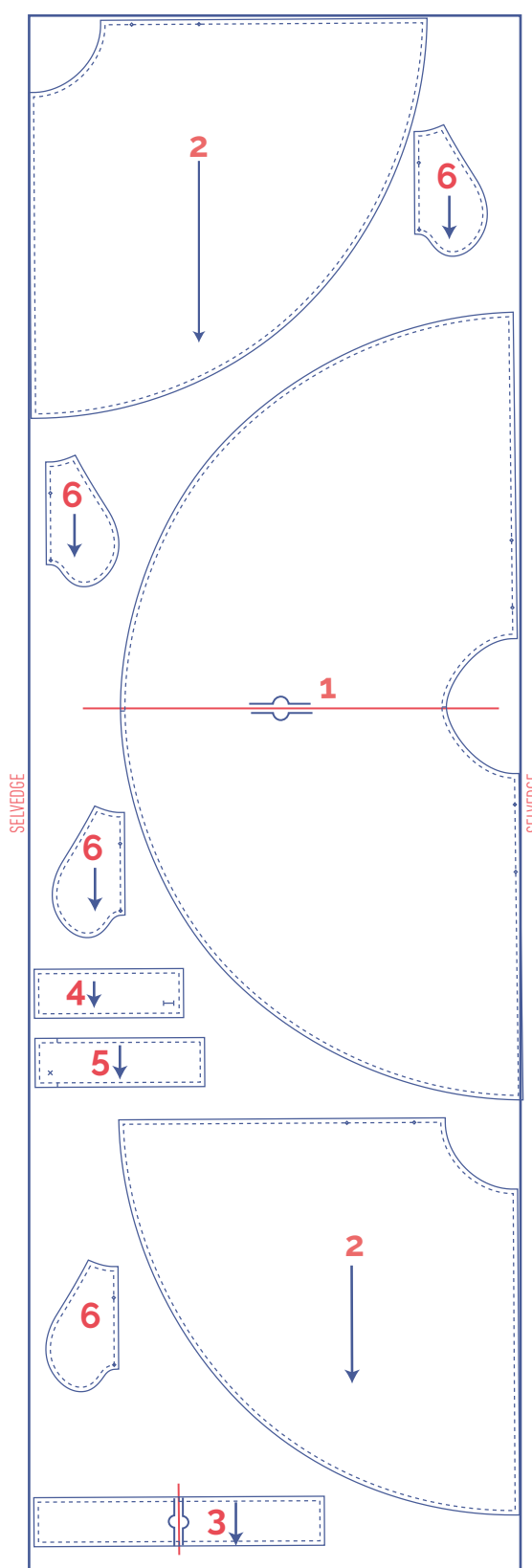
alternative fabric layout – solid fabrics

fabric width 110 cm

4 - 22



24 - 30

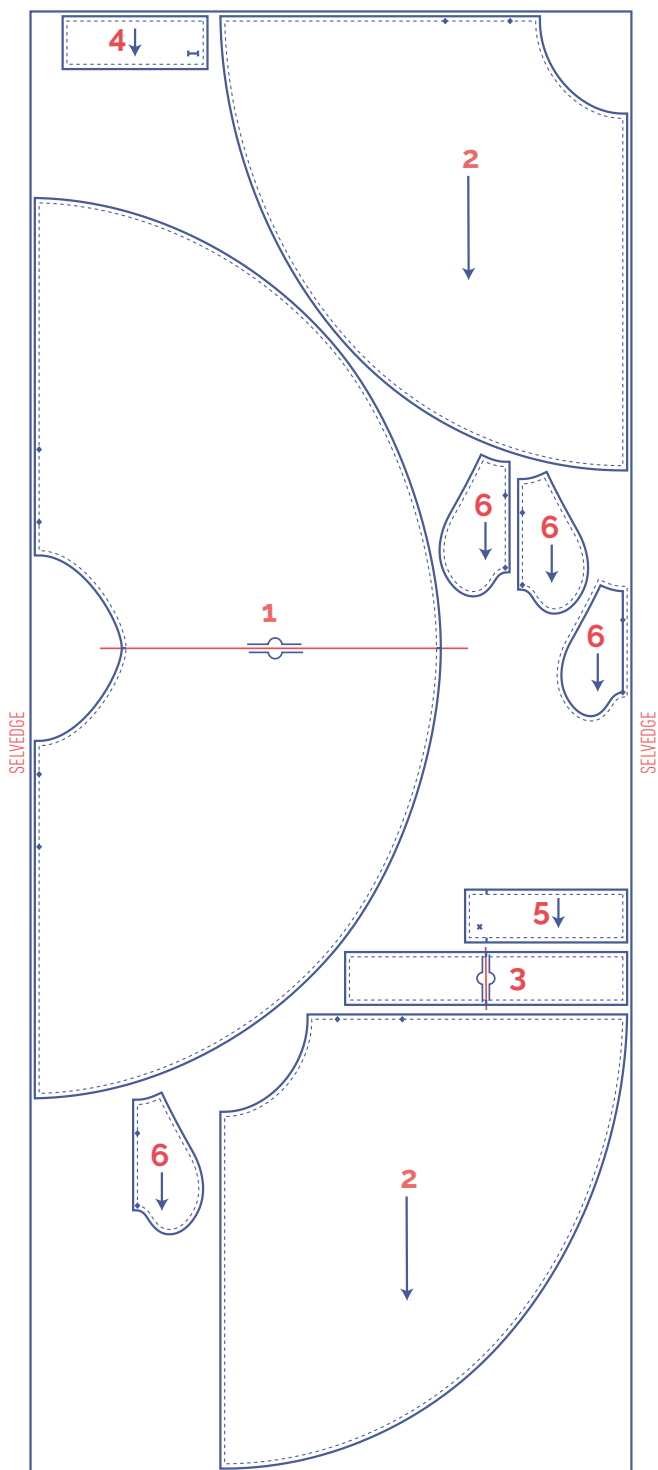


ATTENTION

Pattern piece 1 is cut in the other direction from the other pieces.

alternative fabric layout – solid fabrics fabric width 140 cm

4 - 30



ATTENTION

Pattern piece 1 is cut in the other direction from the other pieces.

marking pattern pieces



notch the pattern paper and fabric at the following points



single notch



double notch



V notch



mark the following points using marking thread



centre point



snap/button



buttonhole

sewing instructions



The method used to finish the seams depends on the fabric used.
The pieces are always sewn together with the right sides of the fabric facing, unless stated otherwise.

NOTE

When we refer to right and left back pieces, it is always from the perspective of what it would look like if you are wearing the skirt.

F front

B back

CF centre front

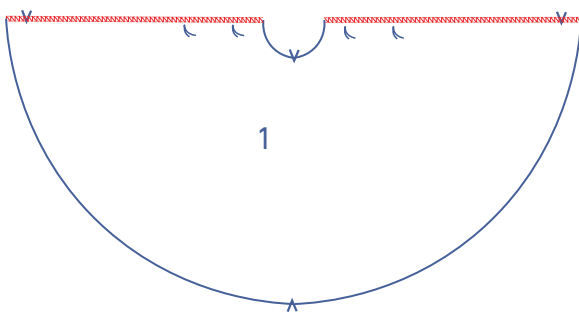
CB centre back

RB right back

LB left back

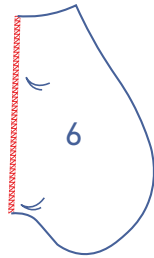
□ right side

▨ wrong side

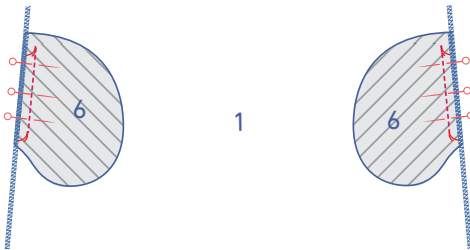


1

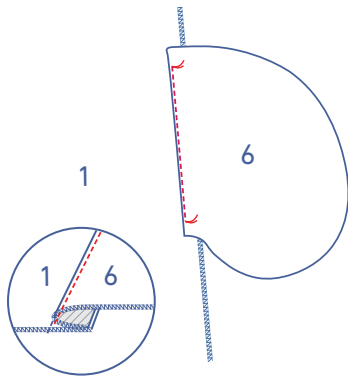
Finish the side seams of the front (1) with overlock stitching.



Finish the straight ends of the pocket pieces (6) with overlock stitching.



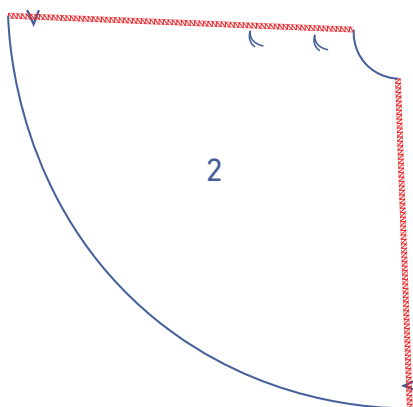
Pin the 2 pocket pieces to the side seams of the front with the marking threads matching.
Sew the pocket pieces into place between the marking threads.



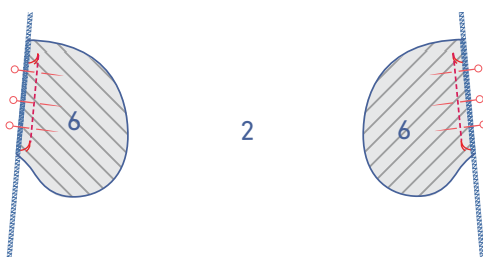
Fold the pocket pieces over. Sew the pocket to the seam allowance underneath, between the marking threads, and right next to the seam.

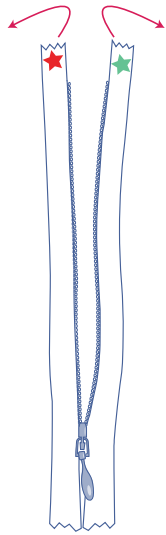
2

Finish the side and CB seams of the back (2) with overlock stitching.



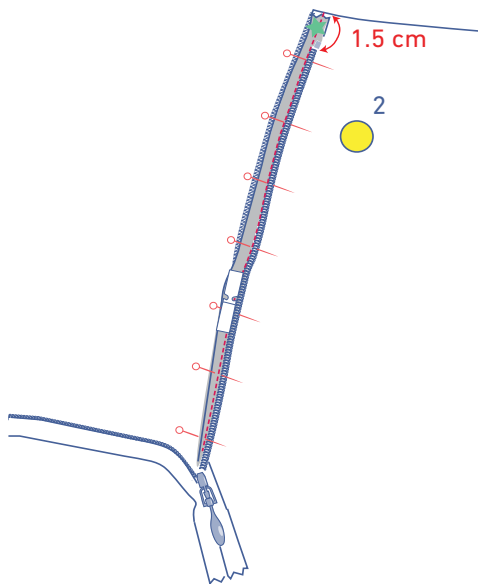
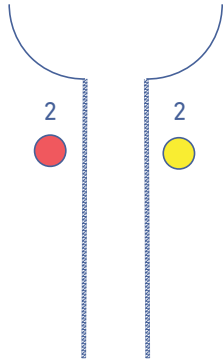
Take the 2 remaining pocket pieces and pin them to the side seams of the back with the marking threads matching. Sew the pockets into place between the marking threads.



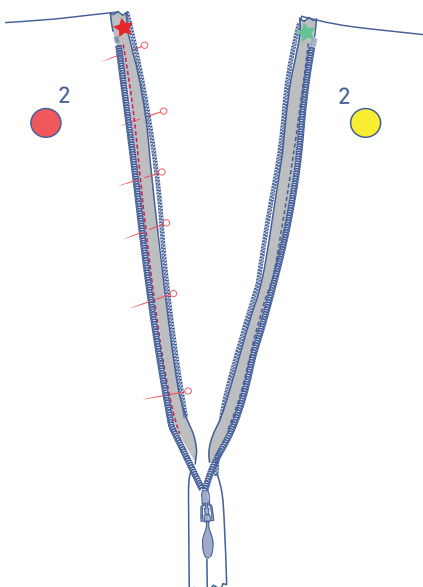


Place the LB and RB in front of you with the right sides facing up.

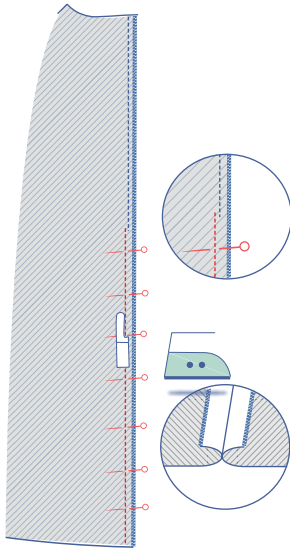
Place the invisible zip in front of you too with the right side facing up. Open the zip.



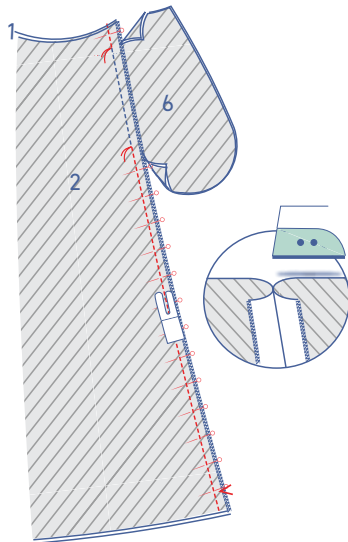
Now, fold the zip tape marked with the green star to the right and pin it to the CB seam of the RB. The edge of the zip tape should match the overlocked edge of the fabric, and the zip teeth should start 1.5 cm under the raw edge of the top. Use an invisible zipper foot to sew as far as possible.



Now, fold the zip tape marked with the red star to the left and pin it to the CB seam of the LB. The edge of the zip tape should match the overlocked edge of the fabric, and the zip teeth should start 1.5 cm under the raw edge of the top. Use the invisible zipper foot to sew off as far as possible.

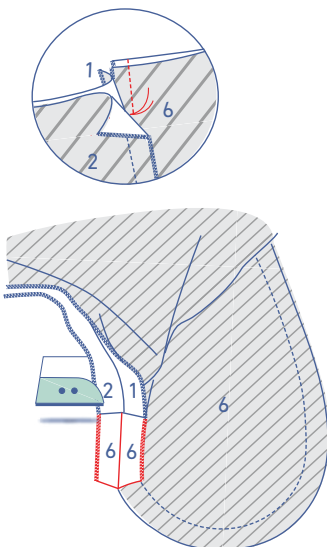


Close the zip and sew the rest of the CB seam into place under the zip using with the narrow presser foot or the zipper foot. Start sewing just above and next to your previous row of stitching (to sew the zip tape). Press the seam allowance open.

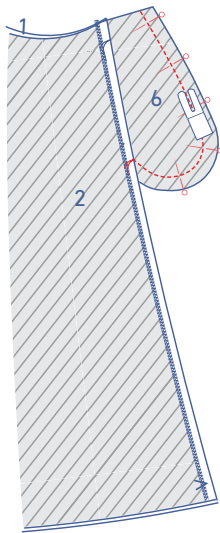


3

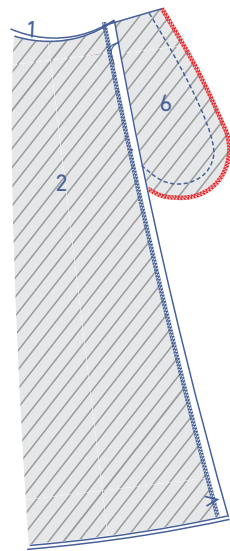
Pin and sew the side seams together above and below the pocket opening. Press the seam allowances open.



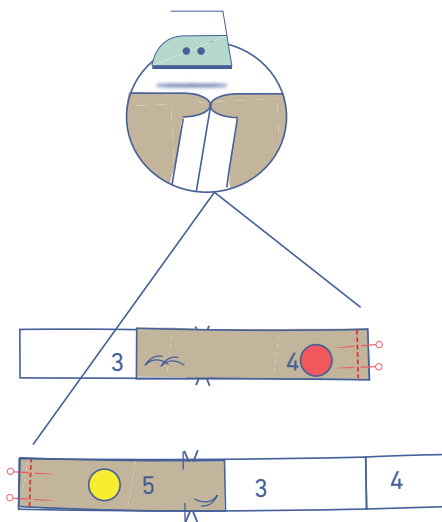
Pin and sew the piece of pocket side seam over the pocket opening as well. Press the seam allowance open.



Pin and sew the contours of the pocket pieces together.

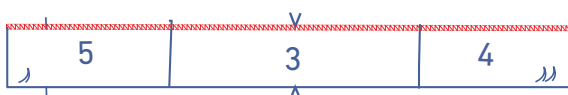


Finish the raw edges together with overlock stitching.

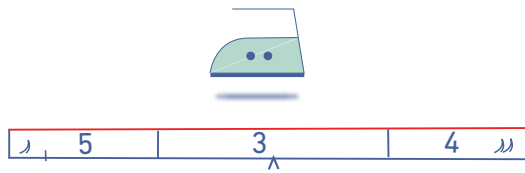


4

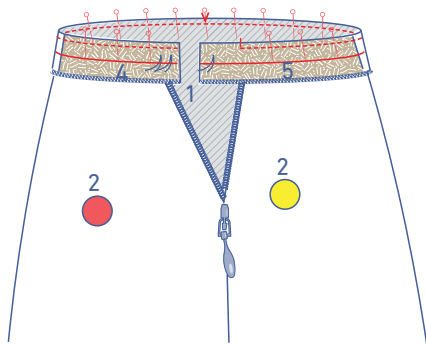
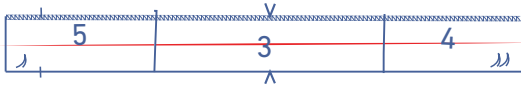
Pin and sew the side seams of the waistband front (3), waistband LB (4) and waistband RB (5). Press the seam allowances open.



Finish the indicated long edge of the waistband with overlock stitching.

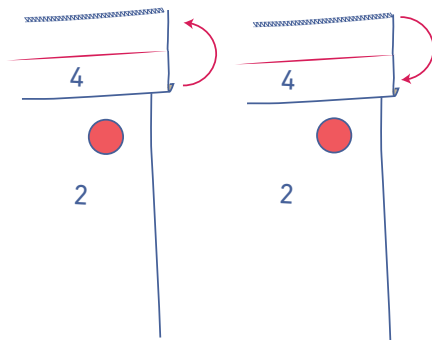


Press the waistband in half lengthwise to create a fold line.
Open back out again.

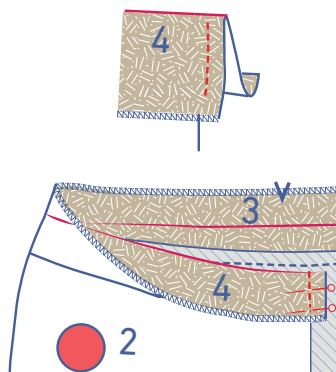


Pin and sew the non-overlocked waistband to the skirt waistline. Make sure that the side seams and notches match.

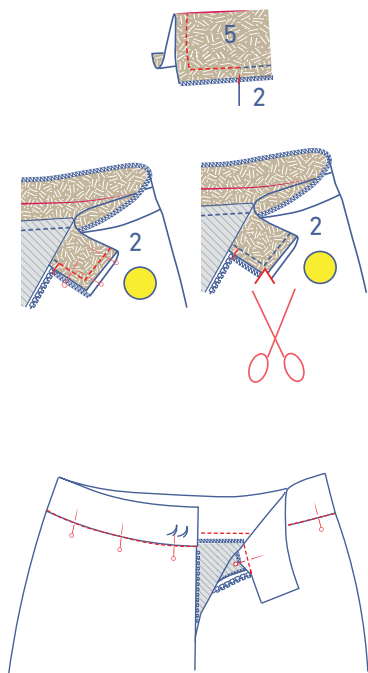
FYI: the notch in the RB matches the (finished) CB seam on the RB; the LB waistband extends 1 cm past the (finished) CB seam on the LB.



First, fold the waistband all the way up. Next, fold half down along the pressed fold line so that the right sides of the waistband are facing.



Sew the short end of the waistband LB. Trim the seam allowance from the corner and turn the right way out.

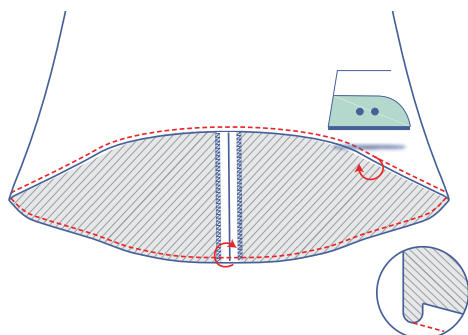
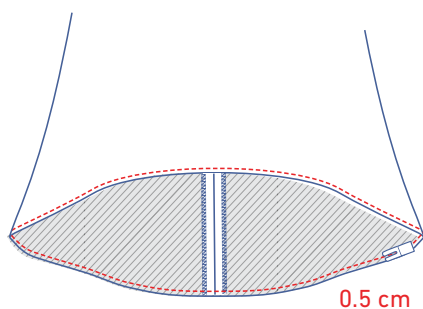


Sew the short end of the waistband. When you reach the corner, leave the needle down, raise the presser foot, turn the garment, put down the presser foot and sew the bottom end to the notch. Trim the seam allowance from the corner.

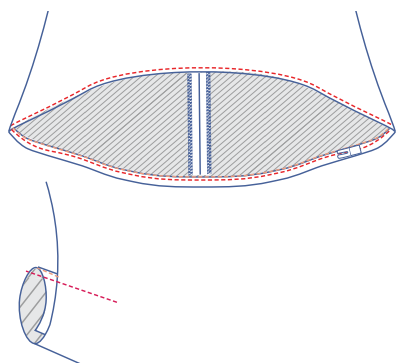
Turn the RB the right way out. Press the waistband neatly flat and pin the waistbands together along the right side. Stitch in the ditch.

5

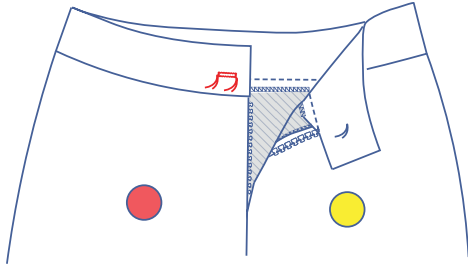
Stitch at 0.5 cm from the raw edge of the hem.



Press onto the wrong side from the previous line of stitching.

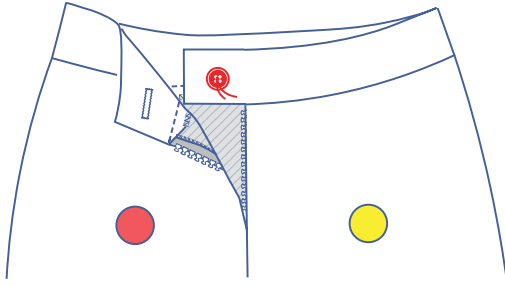


Fold under again and sew into place right next to the folded edge.



6

Make a horizontal buttonhole at the place indicated on the waistband LB.



Sew a button on where indicated on the waistband RB.