

# Wallys by Fibre ⚡ood

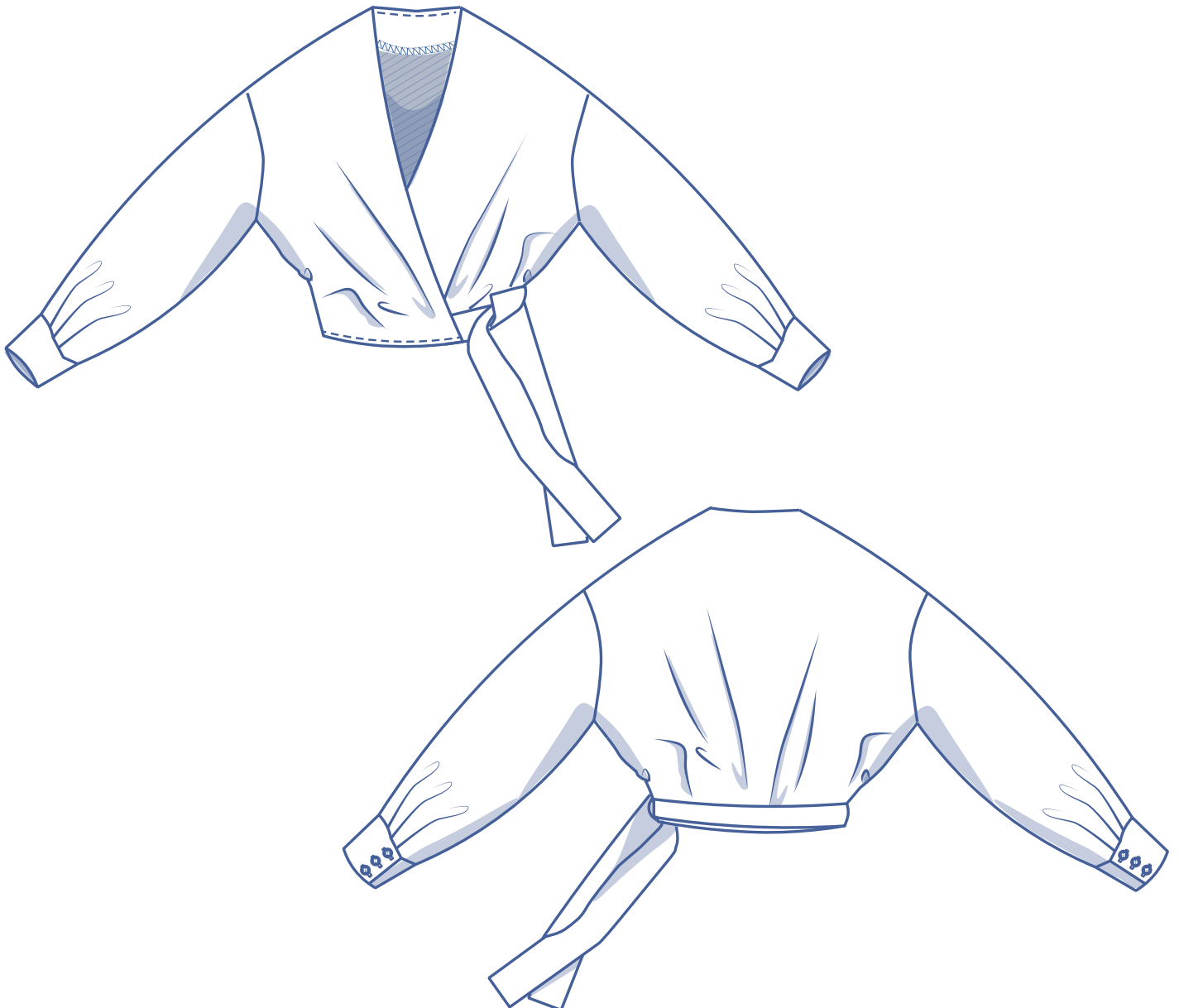


# Wallys by Fibre Mood



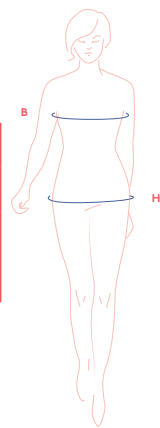
32 - 58

Wallys is a long sleeve wrap blouse that goes well with several different styles and is nice for a variety of occasions. The line created by the top's wrap creates a V-neck with an open feel. This blouse accentuates your waist, drawing attention away from your stomach. Make this blouse in a plain fabric or one with a print.

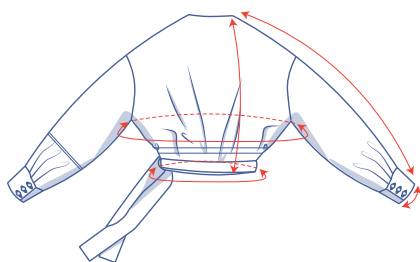


## size chart (in cm)

size (EU)	32	34	36	38	40	42	44	46	48	50	52	54	56	58
UK	4	6	8	10	12	14	16	18	20	22	24	26	28	30
US	0	2	4	6	8	10	12	14	16	18	20	22	24	26
B (bust)	76	80	84	88	92	96	100	104	110	116	122	128	134	140
H (hips)	86	90	94	97	100	103	106	109	115	120	125	130	135	140



## pattern measurements (in cm)



size	32	34	36	38	40	42	44	46	48	50	52	54	56	58
length*	55.75	55.75	56	56	56.25	56.25	56.25	56.5	56.5	56.75	56.75	56.75	57	57
sleeve length**	73	73.5	74	74.5	75	75.5	76	76.5	77.25	78	79	79.75	80.5	81.5
bust*	108	112	116	120	124	128	132	136	142	148	154	160	166	172.5
hem circumference*	89.5	93.5	97.5	100.5	103.5	106.5	109.5	112.5	117.5	122.5	127.5	132.5	137.5	142.5
wrist circumference	20	20.5	21	21.5	22	22.5	23	23.5	24	24.5	25	25.5	26	26.5

\* Measured along the back.

\*\* Including the shoulder length and cuff.

Compare the stated lengths to the measured or desired lengths. **Lengthen** or **shorten** the wrap blouse and/or sleeves by cutting the pattern pieces at the indicated double lines and then spreading the pattern pieces out X cm from each other or overlapping them where needed. Make sure that the CF and CB lines and the side seams are always straight.



### IMPORTANT

Adapt the use of fabric based on these alterations.

## supplies



- Thread
- Iron-on interfacing: max. 75 cm
- Snaps or buttons (Ø 1.1 cm): 6
- Fabric: see table

fabric (in cm)	32	34	36	38	40	42	44	46	48	50	52	54	56	58
fabric width 140 cm	190	205	210	215	220	225	240	245	245	250	255	260	295	305

The corresponding fabric plan can be found on the last page of these sewing instructions.

## fabric advice



Make the Wallys blouse in a fabric with a fluid drape that is also heavy enough, for example in silk, viscose, a polyester blend, etc.

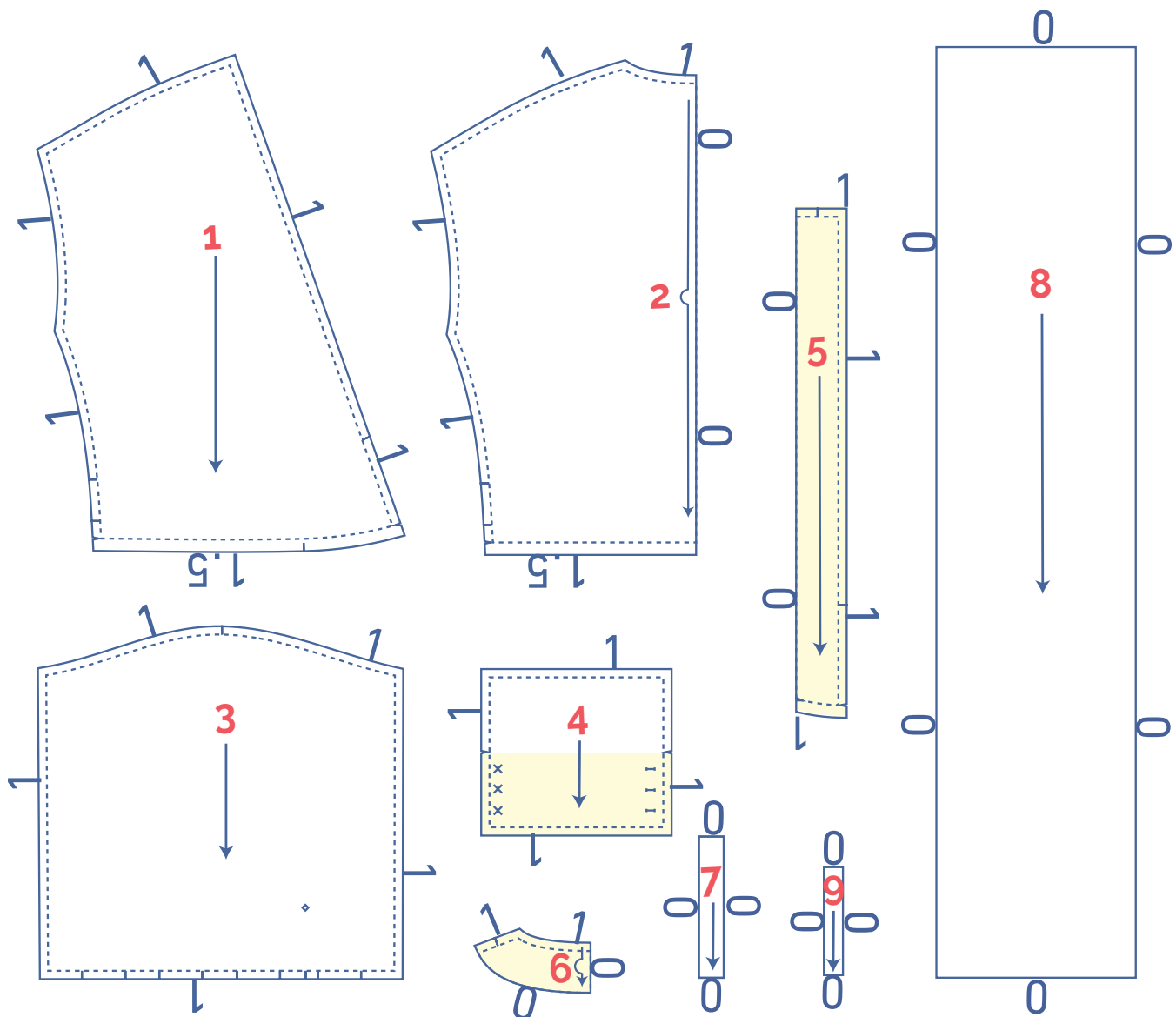
## pattern pieces & seam allowances (in cm)

To sew the garment as described in the instructions, you must draw the illustrated seam allowances around the paper pattern pieces before cutting them out.

1. front: 2x
2. back: 1x on fabric fold
3. sleeve: 2x
4. cuff: 2x
5. front facing: 2x
6. back facing: 1x on fabric fold
7. bias arm split: 2x
8. belt: 2x
9. belt loops: 1x

**IMPORTANT**

The pieces highlighted in light yellow have iron-on interfacing attached to the wrong side.



# sewing instructions



The method used to finish sewing the garment depends on the fabric used. The pieces are always sewn together with the right sides of the fabric matching exactly, unless stated otherwise.

F front

B back

RF right front

LF left front

RBP right back piece

LBP left back piece



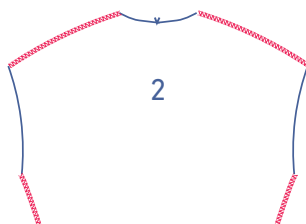
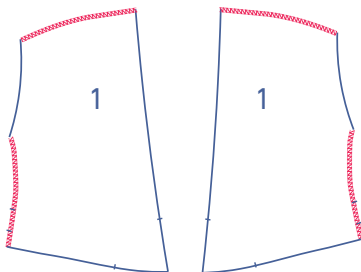
right side



wrong side

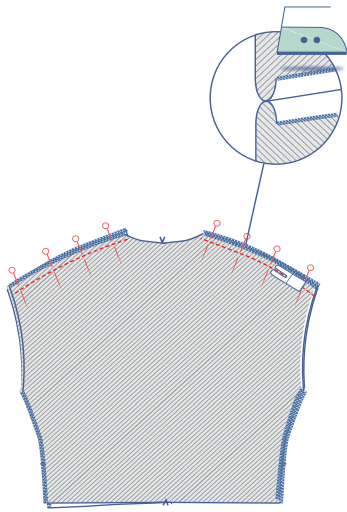


iron-on interfacing

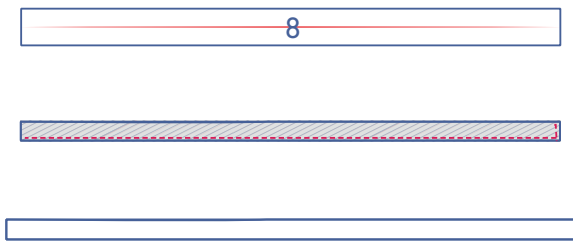


**1**

Finish the hem, shoulder and side seams of the front (1) and back (2) using an overlock stitch.



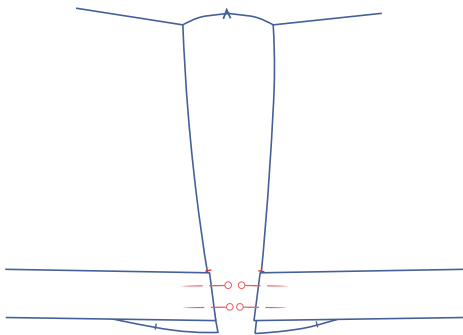
Pin and sew the shoulder seams and press the seam open.



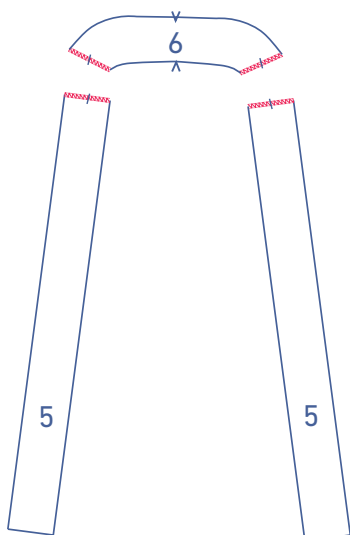
## 2

Fold the two pattern pieces of the belt (8) in half lengthwise with the right side of the fabric facing inwards. Sew the indicated sides and leave 1 short side open to turn the belt right side out again.

Turn both pieces of the belt right side out.

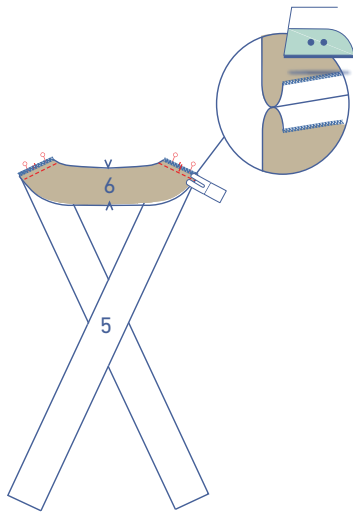


Pin both pieces of the belt at the front with the finished top matching the nick.

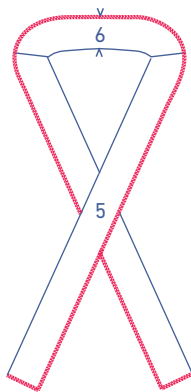


Finish the shoulder seams of the front facing (5) and back facing (6) using an overlock stitch.

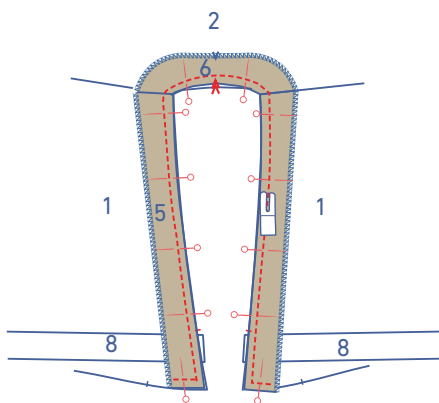




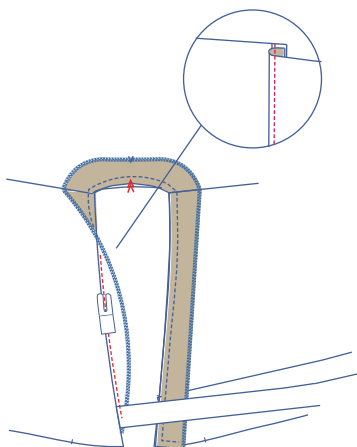
Pin and sew the shoulder seams together with the nicks matching perfectly and press the seam allowances open.



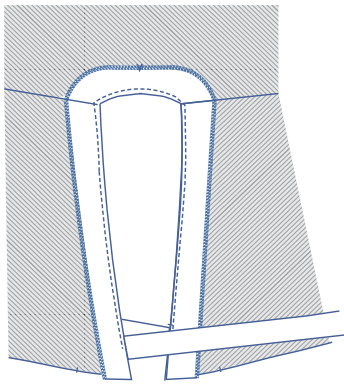
Finish the outside and the hem of the facing using an overlock stitch.



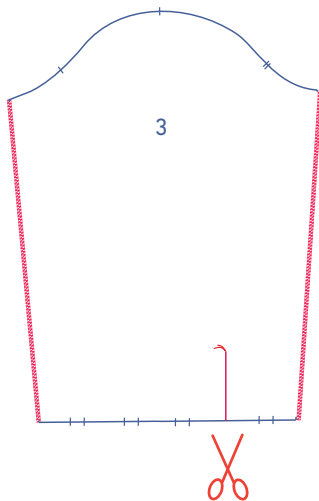
Pin and sew the necklines of the facing and the work piece to each other.



Fold the facing and the underlying seam allowance over and sew the facing 2 mm from the seam through all layers of fabric.

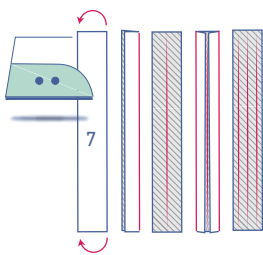


Fold the facing back over to the wrong side of the work piece.



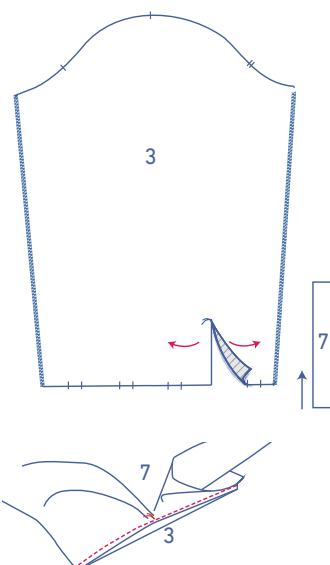
### 3

Finish the sides of the sleeve (3) using an overlock stitch. Cut the sleeve on the indicated line up to the basting thread.



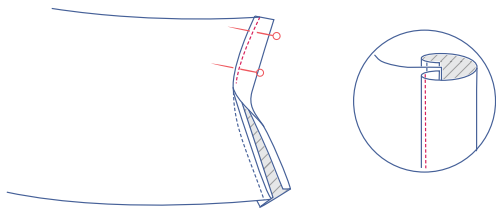
Press the bias arm split (7) as follows:

- Start by pressing the bias in half lengthwise all the way down.
- Next, press the long sides until the raw edges line up with the centre line.

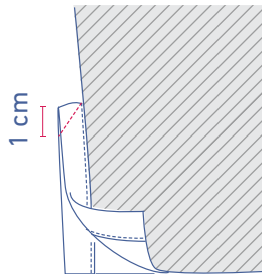


Open the sleeve split so that you end up with a single straight line. Slide the bias arm split under the sleeve with the right side facing up. Match the raw edges together and pull the sleeve a bit to the side at the basting thread. Sew a parallel line 0.5 cm from the raw edge. Only a few fabric threads have been sewn in place at the basting thread.

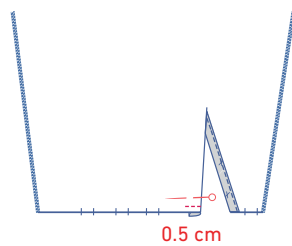




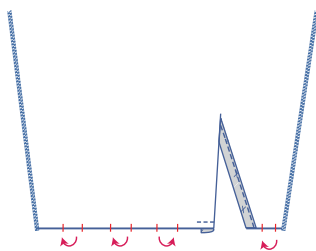
Fold the bias towards the right side of the sleeve and lay the fold line directly onto the previous stitching. Sew in place right next to the edge.



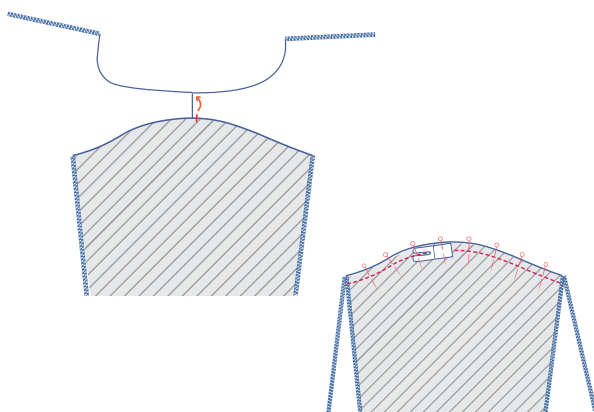
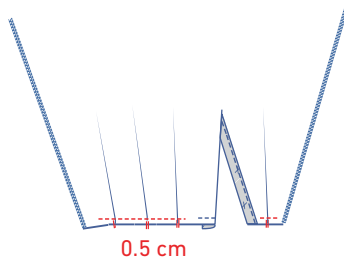
Fold the sleeve in half lengthwise, with the right side of the fabric facing inwards. Sew the tops of the biases together. Sew a diagonal line starting from the corner. Fold the sleeve back open.



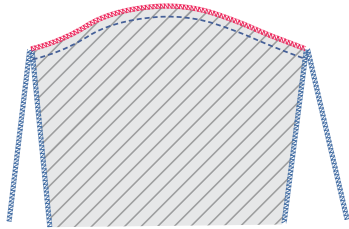
Fold the bias at the front of the sleeve (i.e., the widest side of the sleeve hem, i.e., the side where the nicks of the fold are) over to the wrong side of the sleeve and sew the bias in place at 0.5 cm from the bottom.



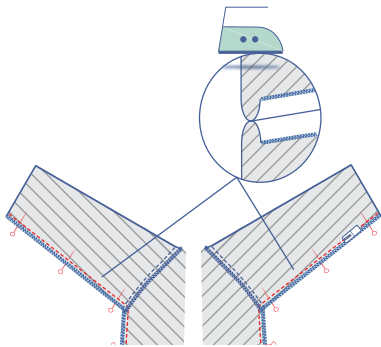
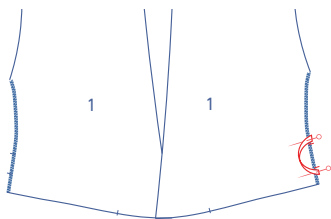
Create the folds by matching all of the nicks in the direction indicated. Sew the folds in place at 0.5 cm from the edge.



Pin and sew the sleeve cap to the armhole. The single nick should line up with the shoulder seam.



Finish the raw edges together using an overlock stitch.

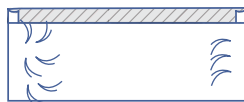
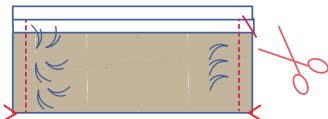
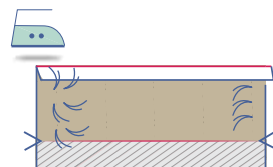
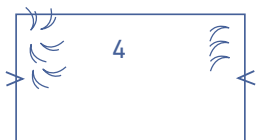


## 4

Fold the belt loop (9) in half crosswise and sew the long side. Turn inside out.

Pin the ends above and below the nicks to the left side seam.

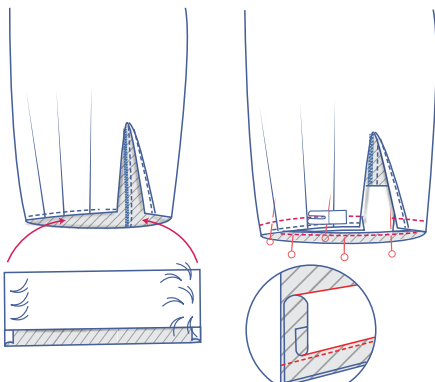
Pin and sew the side and seam under the arms into place. However, be sure to leave an opening between the nicks in the right side seam. Press the seam allowance open.



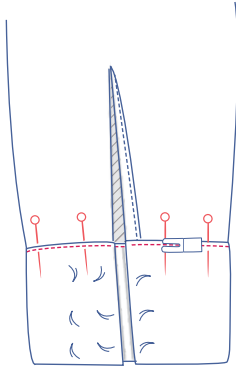
## 5

Press 1 cm along the long side of the cuff (4) seam allowance (on the side where the buttons and buttonholes are located) over to the wrong side.

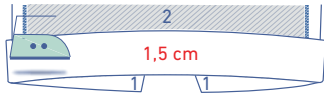
Fold the cuff in half lengthwise to where the V notches are located with the right side of the fabric faced inwards. Sew the short sides. Trim the seam allowance and turn inside out.



Slide the cuff into the sleeve. Pin and sew the pressed over raw edge of the cuff to the bottom of the sleeve along the wrong side of the sleeve.

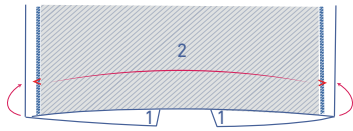


Fold the cuff towards the right side of the sleeve and lay the fold line (of the pressed over seam allowance) directly onto the previous stitching. Sew in place next to the edge.

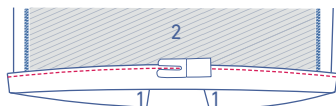
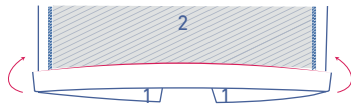


## 6

Press the seam allowance up to the V notches and fold back down.



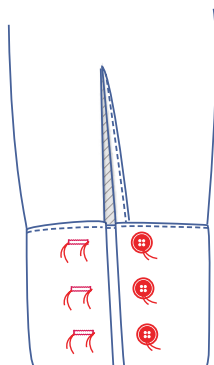
Fold the raw edge against the fold line and then fold one more time.



Sew the hem allowance in place next to the fold line.

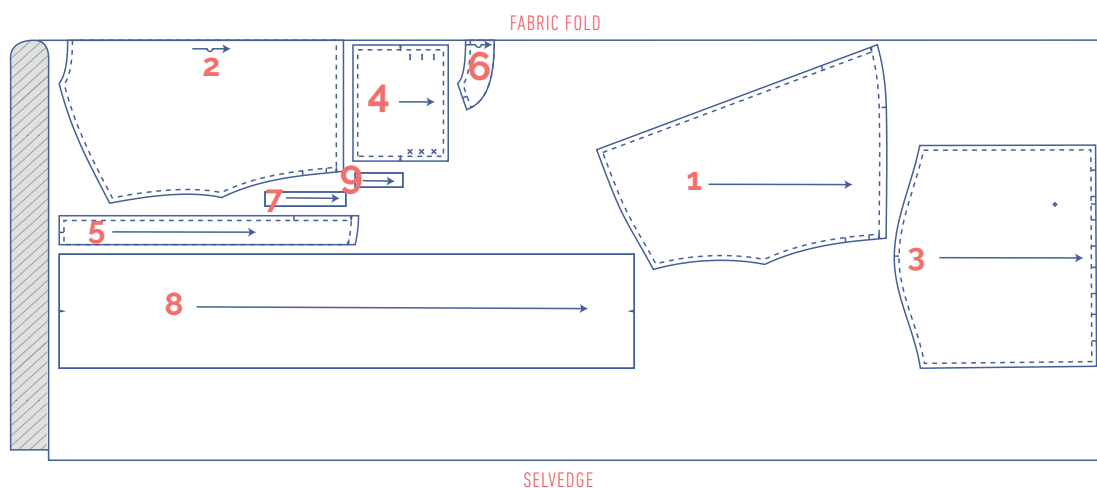
## 7

Make the buttonholes and sew the buttons on at the indicated places

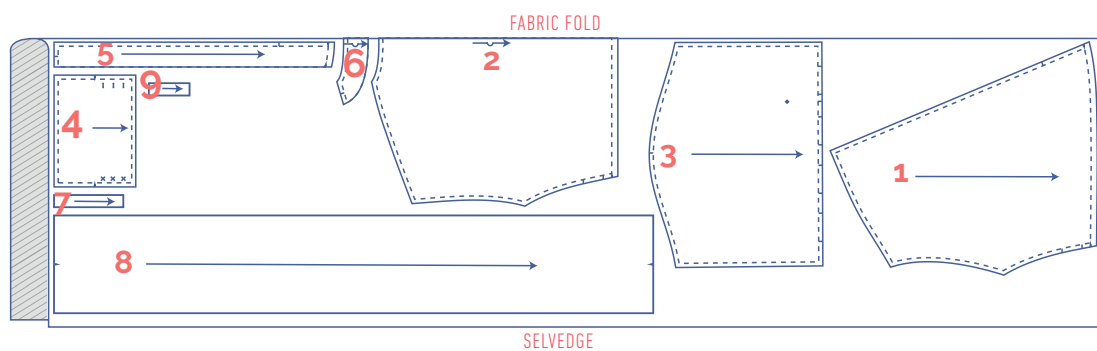


## fabric plan for fabric 140 cm wide

4 - 14



16 - 30



## marking pattern pieces

✂	Notch the pattern paper and fabric at the following points	🧵	Mark the following points using marking thread
	single notch	⬠	centre point
	double notch	✕	snap/button
V	V notch	⏏	buttonhole