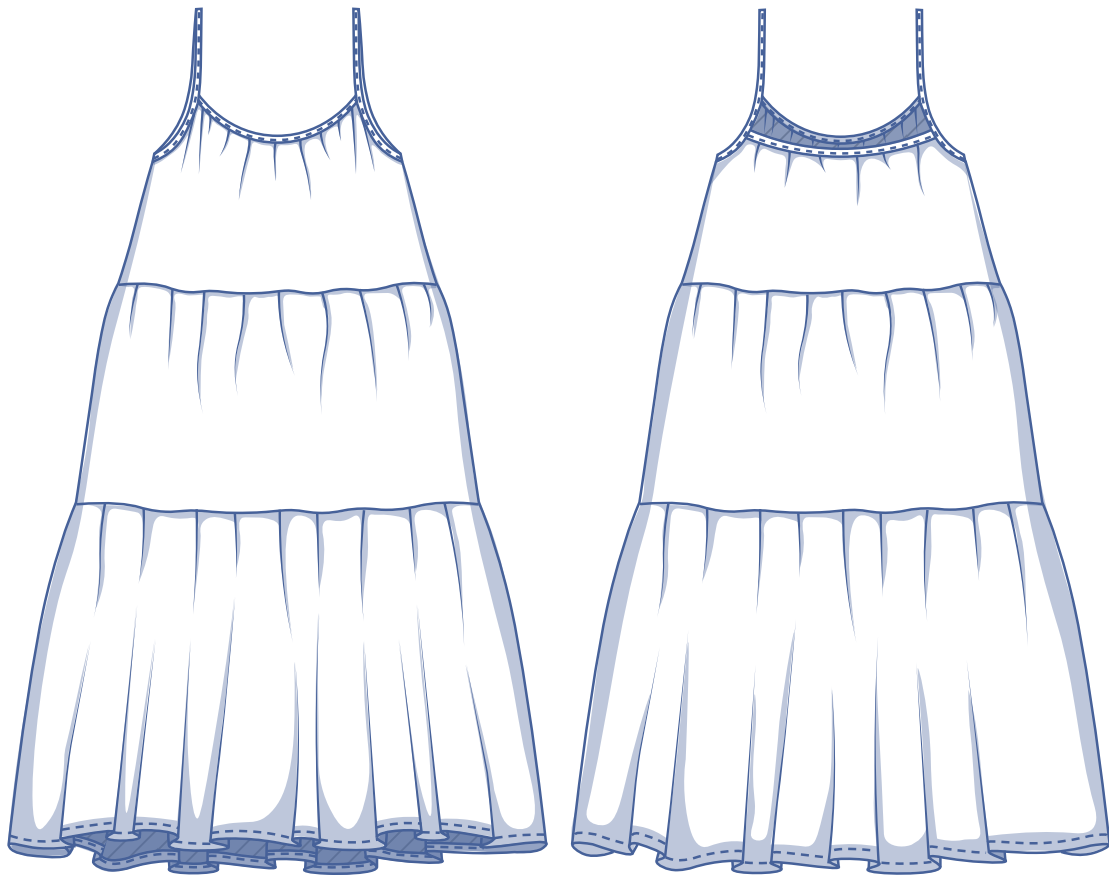


Polly by Fibre Mood



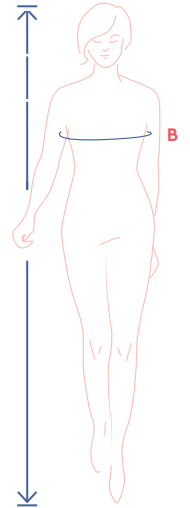
XS - XXXL



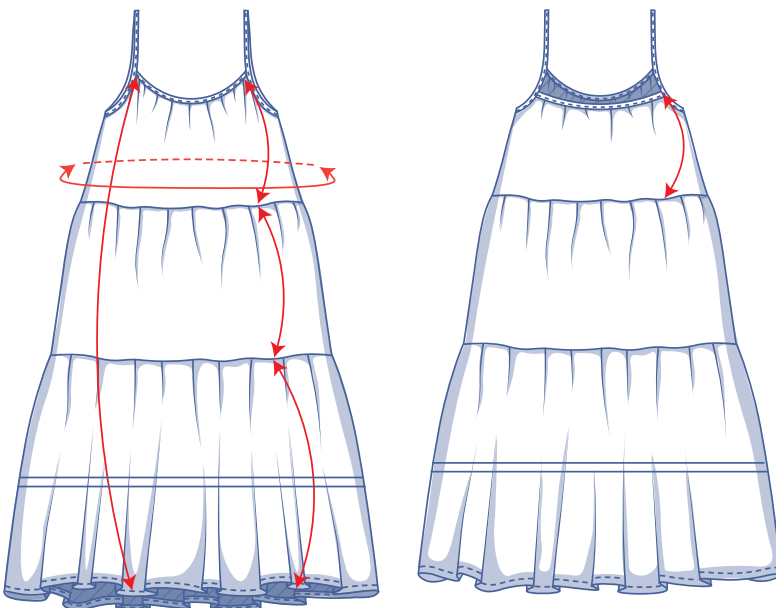
size chart (in cm)

size	XS		S		M		L		XL		XXL		XXXL		
	4	6	8	10	12	14	16	18	20	22	24	26	28	30	32
body height	160	164	166	167	168	169	170	171	172	172	172	172	172	172	172
B (bust)	76	80	84	88	92	96	100	104	110	116	122	128	134	140	146

Choose your size based on the **bust measurement**. Pick the size that is the best match for your bust.



pattern measurements (in cm)



== shorten or lengthen the pattern here

This chart's measurements are the pattern measurements based on the fabric type and serve as a reference. Ease has been added to the width measurements (in addition to the exact body measurements) for a more comfortable fit. Polly is designed to have a **relaxed cut**.

size	XS	S	M	L	XL	XXL	XXXL
length dress	106	106.75	107.25	108	110	110.75	111.75
length front bodice	26	26.75	27.25	28	30	30.75	31.75
length back bodice	23	23	23	23	23	23	23
length skirt upper band	30	30	30	30	30	30	30
length skirt lower band	50	50	50	50	50	50	50
bust	134.5	146.25	158	169.75	183.5	199.25	215

Compare the stated lengths to the measured or desired lengths. **Lengthen** or **shorten** the dress by cutting the pattern pieces at the indicated double lines. Then either increase the distance between the cut pieces by the desired amount (to lengthen) or overlap the pieces (to shorten). Make sure that the CF and CB lines and the side seams are always straight.



IMPORTANT

Adjust the amount of fabric to be used based on these alterations.

notions



- Thread
- Fabric: see table

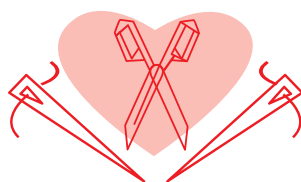
fabric use		XS	S	M	L	XL	XXL	XXXL
fabric width 110 cm	cm	335	360	385	440	470	505	545
fabric width 140 cm	cm	290	310	330	350	435	465	500

The corresponding fabric layout can be found on page 6 of these sewing instructions.

fabric advice Polly is a dress that is ripe for some patchwork! How about sewing your (woven) scraps together to make up the pattern pieces?



Proud to be #Sewista



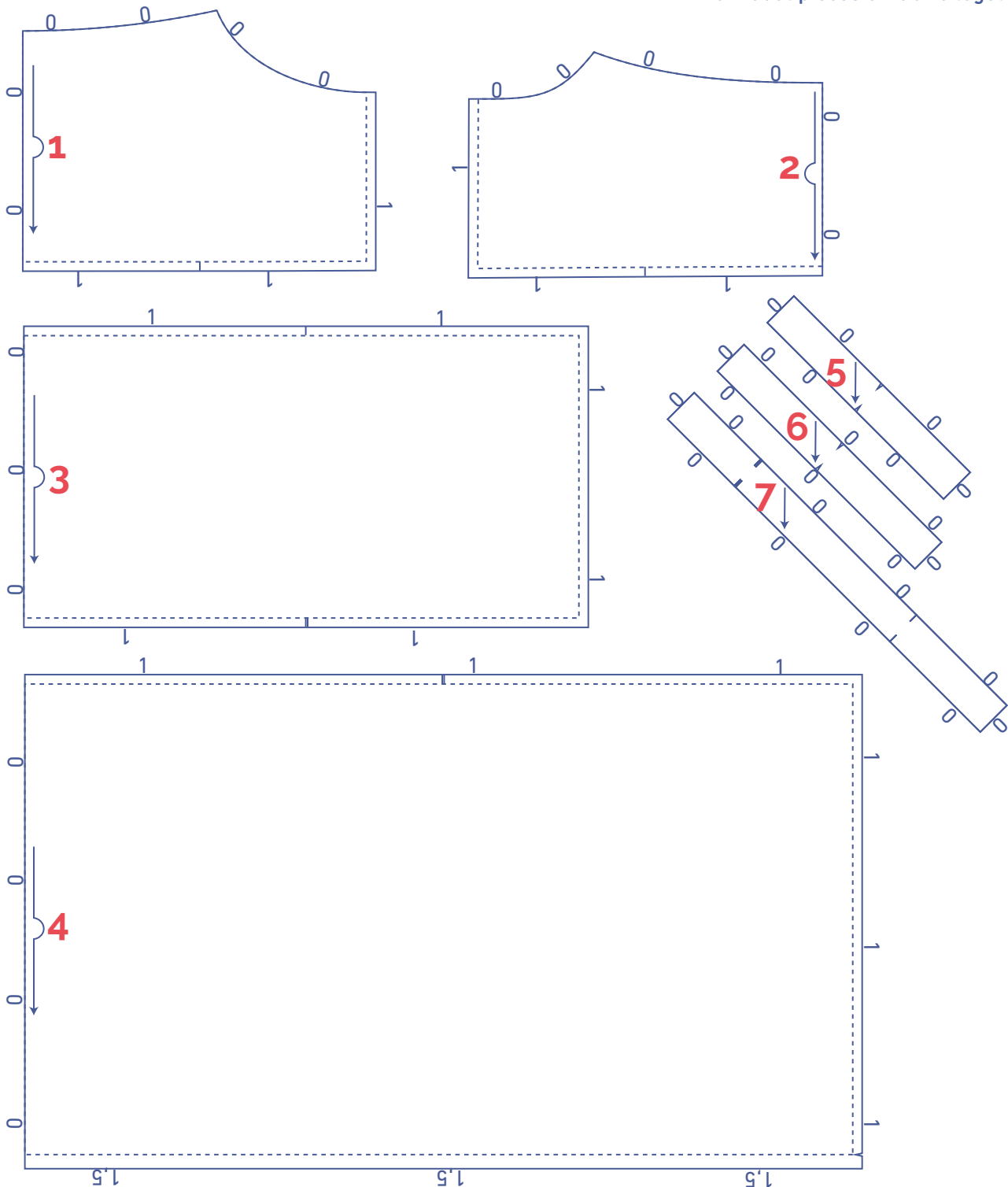
pattern pieces & seam allowances (in cm)

To sew the garment as described in the instructions, draw the illustrated seam allowances around the paper pattern pieces before cutting them out. If you are using a PDF pattern, the pattern can be printed with or without seam allowance. To find out more, watch the [video](#).

1. front: 1x on fabric fold
2. back: 1x on fabric fold
3. skirt upper band: 2x on fabric fold
4. skirt lower band: 2x on fabric fold
5. bias tape front: 1x
6. bias tape back: 1x
7. bias tape armhole: 2x

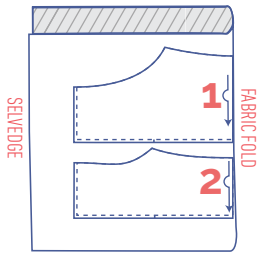
NOTE

You can make patchwork in two ways: (1) sew together fabric pieces as you like, then place the paper pattern piece on top and cut it out; or (2) cut the (paper) pattern pieces up and add seam allowance, then use these as templates to cut and sew individual pieces of fabric together.

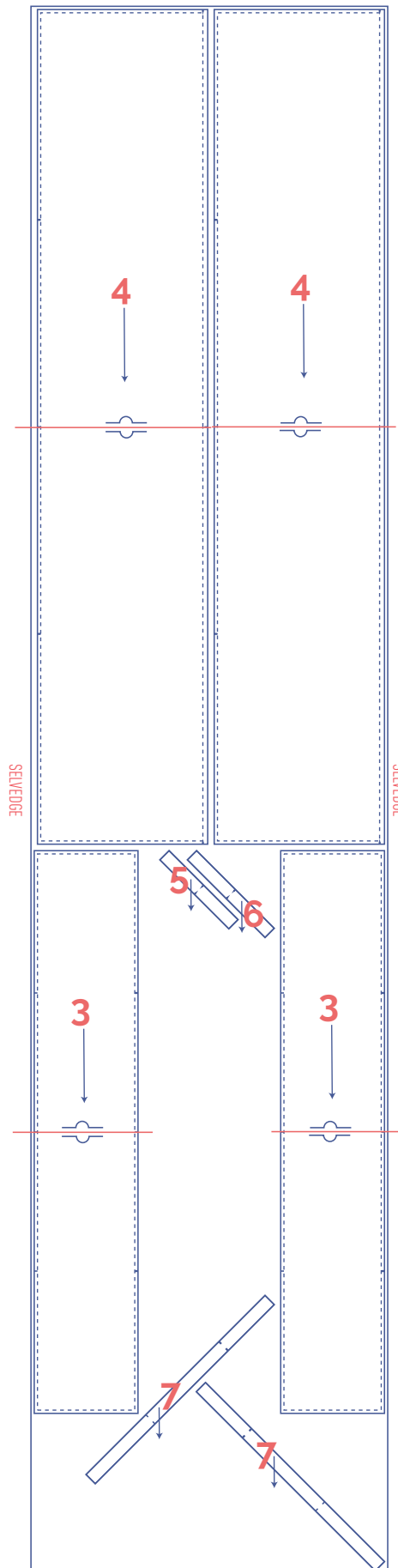


fabric layout – solid fabrics
fabric width 110 cm

XS - XXXL

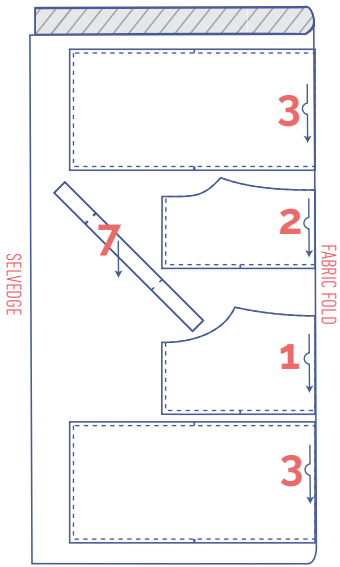


+

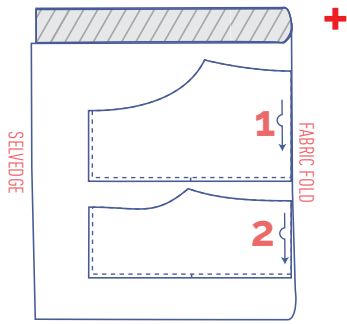


fabric layout – solid fabrics
fabric width 140 cm

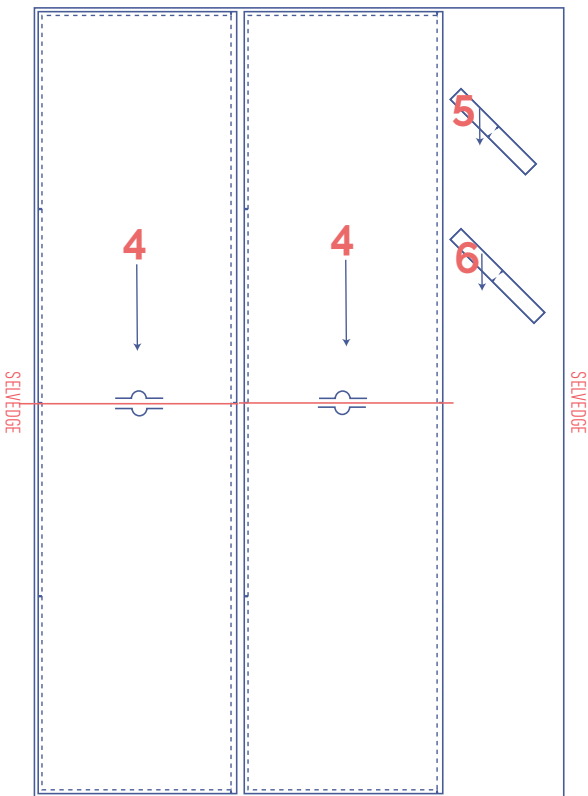
XS - L



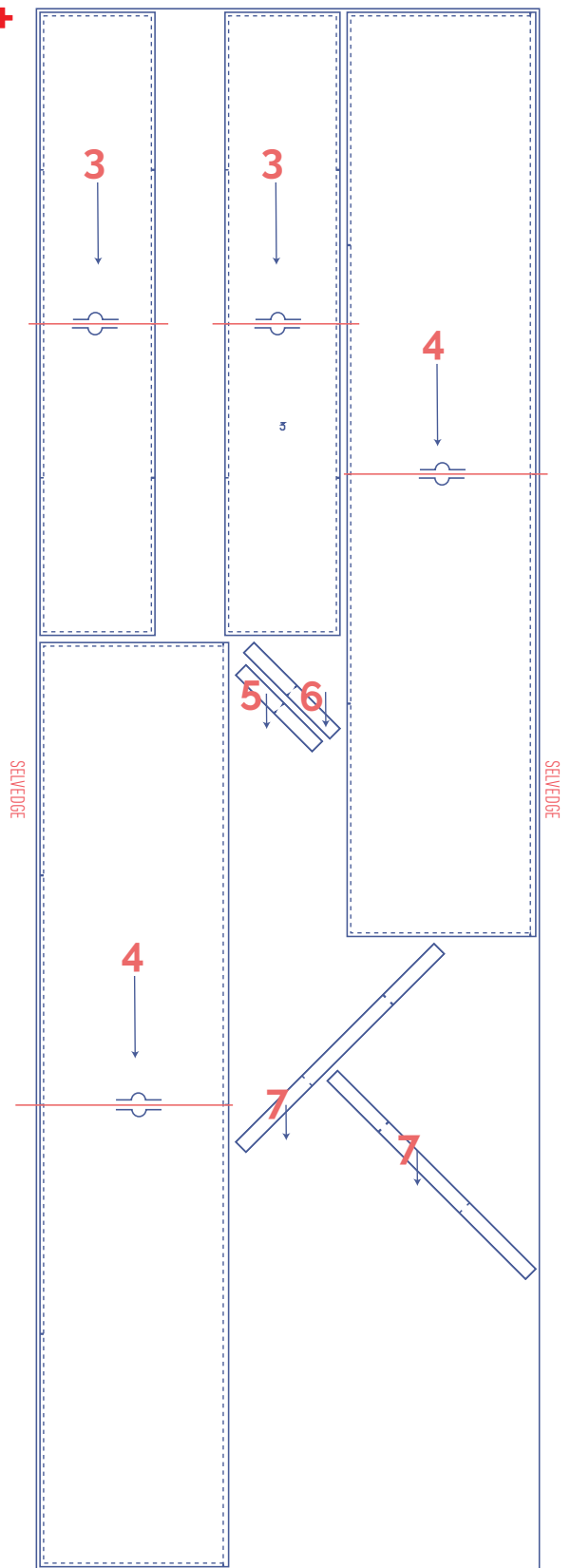
XL - XXXL



+



+



sewing instructions



The method used to finish the seams depends on the fabric used. The pieces are always sewn together with the right sides of the fabric facing, unless stated otherwise.

F front

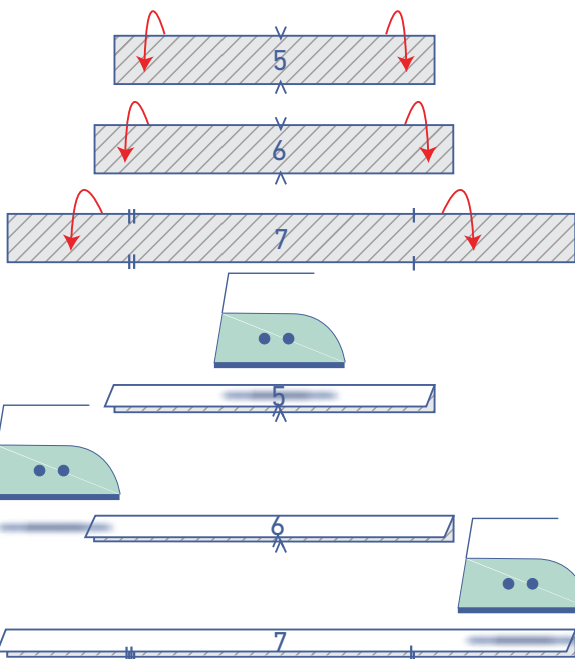
B back

CF centre front

CB centre back

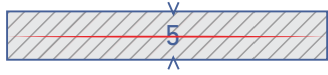
 right side

 wrong side

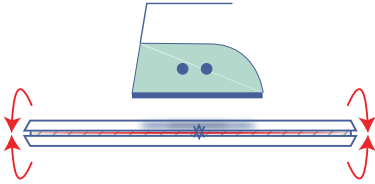
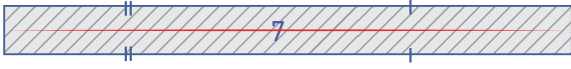
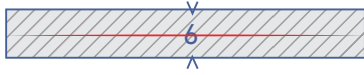


1

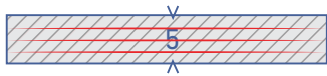
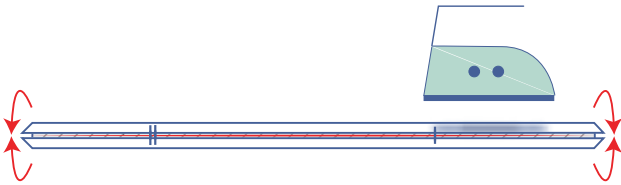
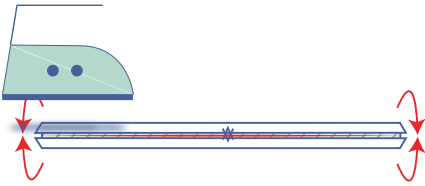
Press the bias tape front (5), bias tape back (6) and the bias tape for the armholes (7) in half with the long ends touching and the wrong sides facing each other to create a fold line.



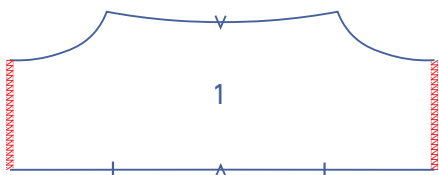
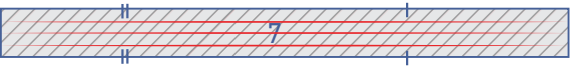
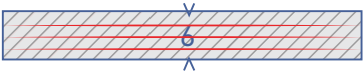
Open back out.



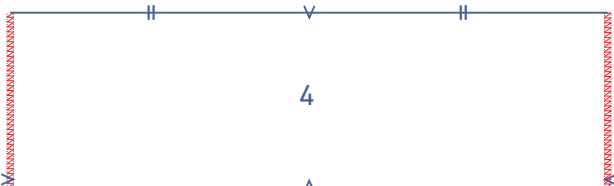
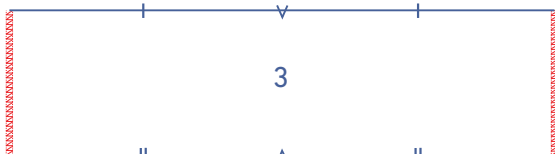
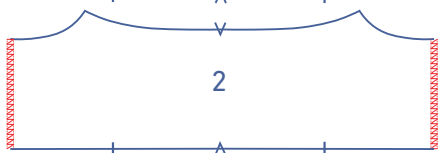
Press both raw edges in to meet the fold line to create two new creases.

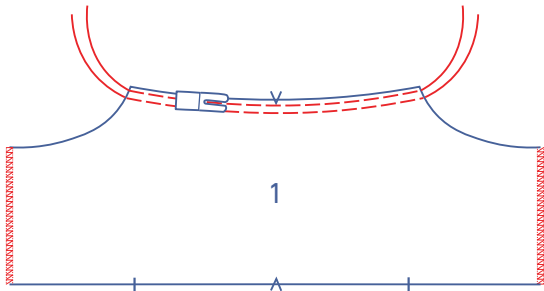


Open back out.



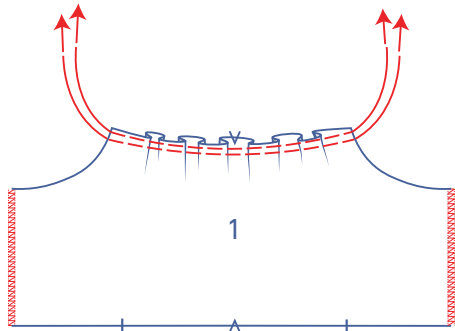
Finish the edges of the front (1) and back (2) pieces and the skirt upper band (3) and skirt lower band (4) pieces with overlocking where indicated.



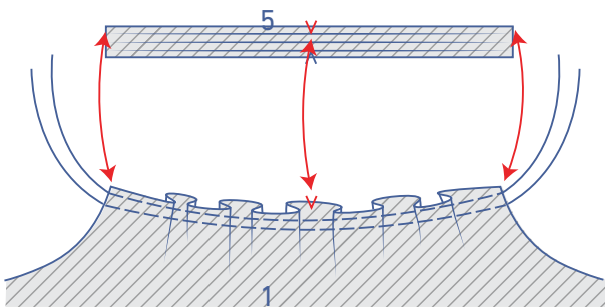


2

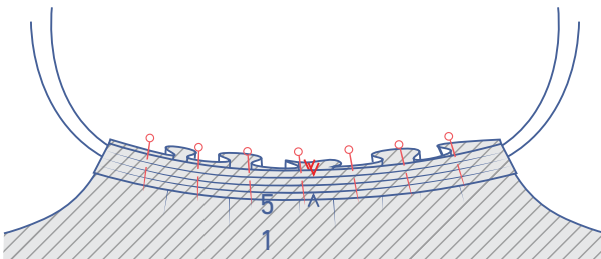
Sew two parallel lines of stitching at the top of the front, using a long stitch length at a low thread tension. Leave a length of thread at the beginning and end of your stitching.



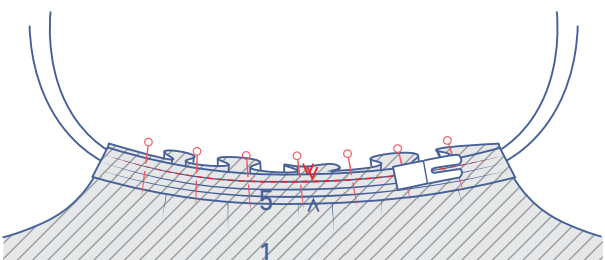
Gently tug the ends of the threads to gather the fabric.

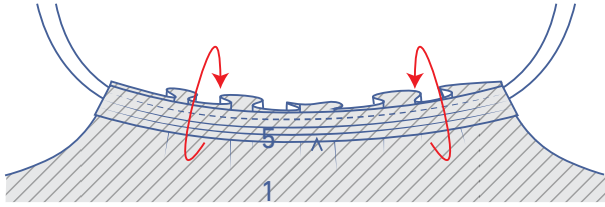


Pin the bias tape front to the top of the front along the wrong side, distributing the gathers until the markings match.

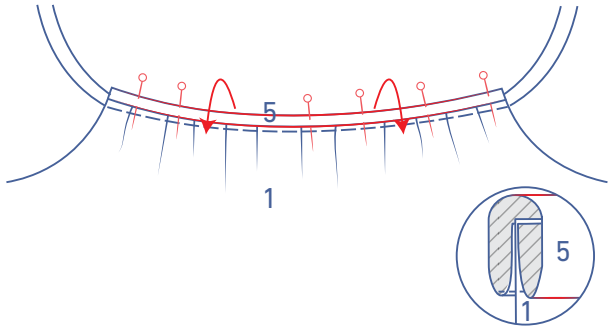


Stitch the bias tape front into place along the first fold line.

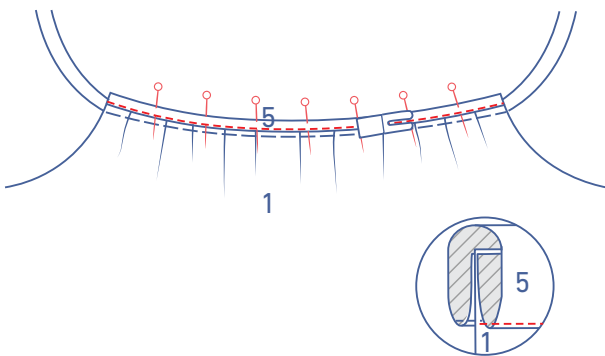




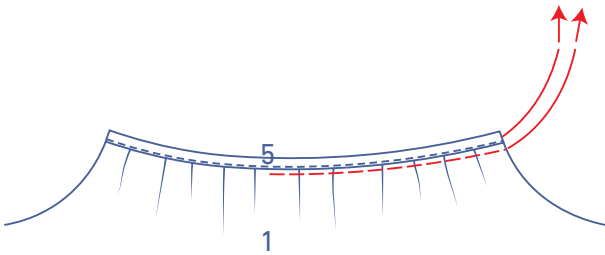
Fold the bias tape over towards the right side of the front along the centre crease. Place the other pressed fold line directly over the stitching.



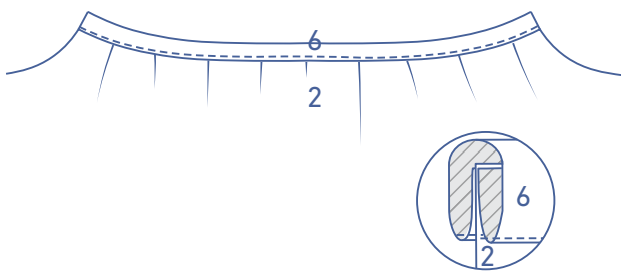
Edgestitch the bias tape into place.

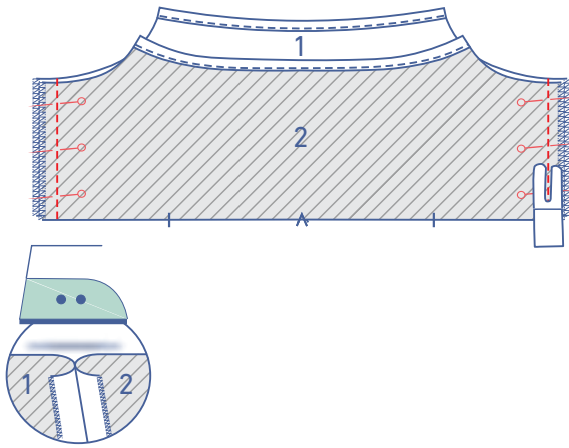


Remove the gathering threads.

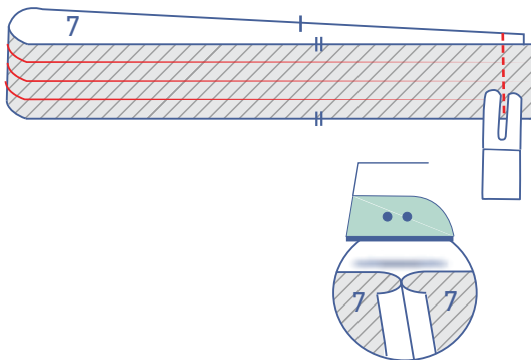


Repeat the previous steps to sew the bias tape back to the back.





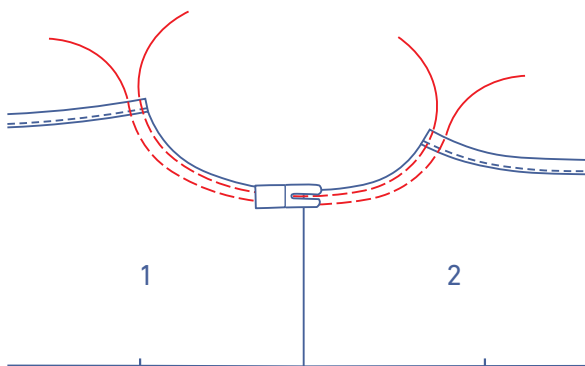
Pin and sew the side seams together. Press the seam allowance open.



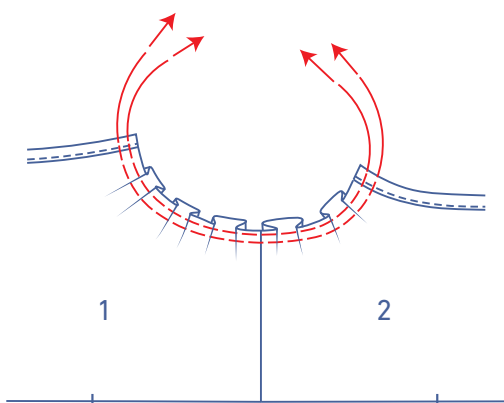
3

Fold the bias tape for the armholes in half with the short ends together and the right sides of the fabric facing each other. Sew the short ends closed.

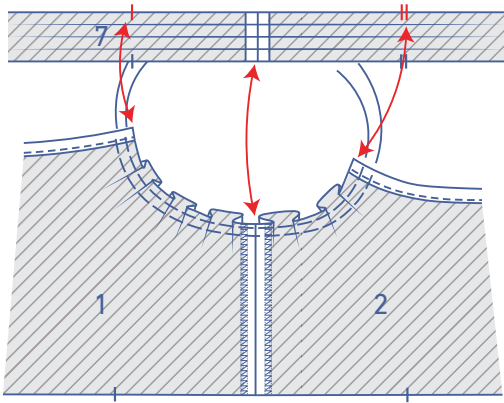
Press the seam allowances open.



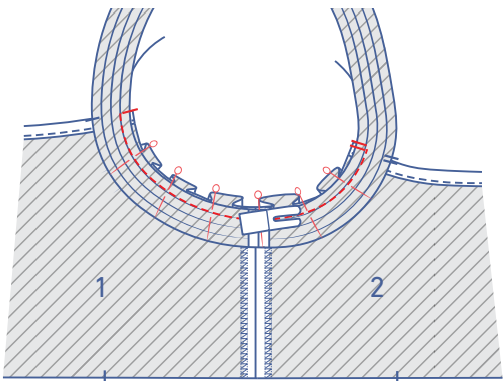
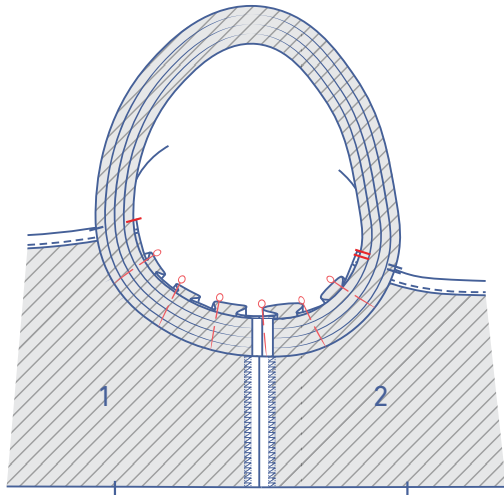
Sew two parallel lines of stitching at the top of the armholes of the dress using a long stitch length at a low thread tension. Leave a length of thread at the beginning and end of your stitching.



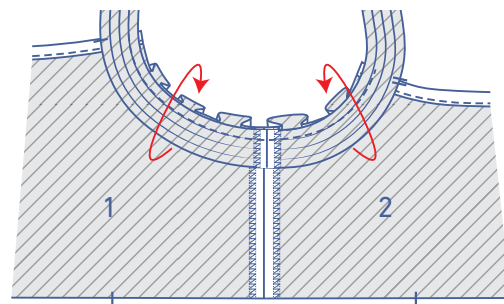
Gently tug the ends of the threads to gather the fabric.



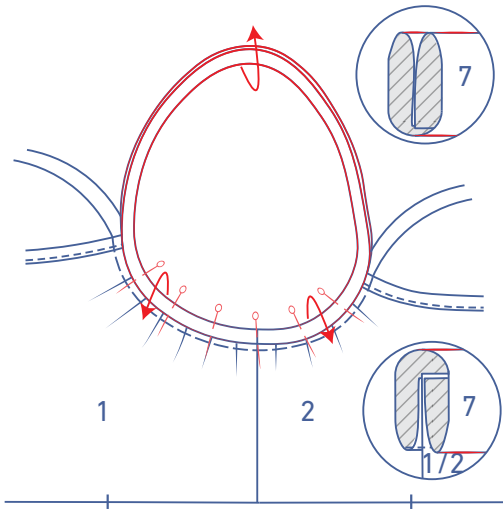
Pin the bias tape for the armholes to the armhole of the dress along the wrong side, distributing the gathers until the markings match. The finished top of the front aligns with the single notch, the finished top of the back with the double notch and the seams should match.



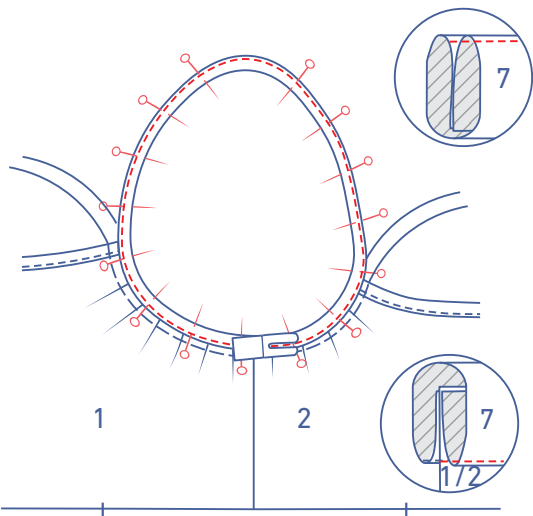
Stitch the bias tape into place along the first fold line between the single notch and the double notch.



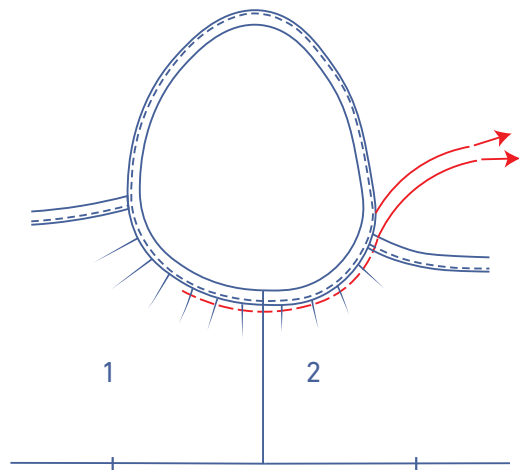
Fold the bias tape over towards the right side of the dress along the centre crease. Place the other pressed fold line directly over the stitching.



Fold the rest of the bias tape in half along the pressed fold lines.



Edgestitch the bias tape into place all the way around.

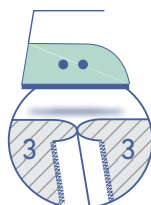


Remove the gathering threads.

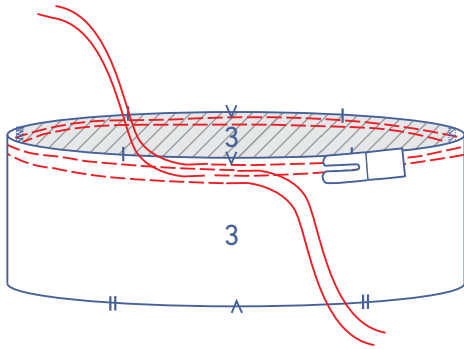


4

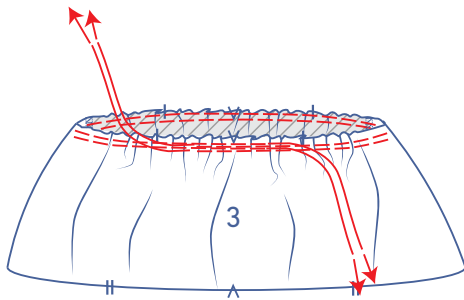
Pin and sew the side seams of the skirt upper band pieces together. Press the seam allowance open.



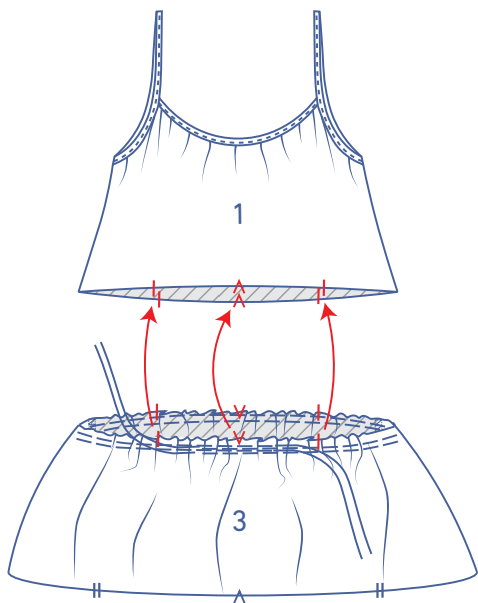
Sew 2 parallel rows of stitching at the top of the skirt upper band with a long stitch length at a low thread tension. Leave a length of thread at the start and end of the rows.



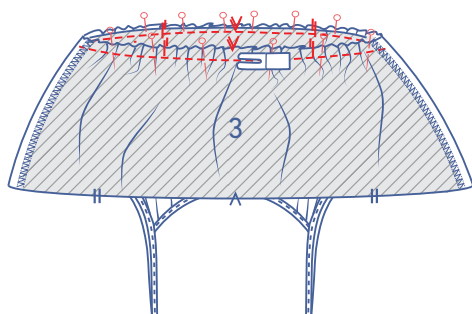
Carefully tug the ends of the threads to gather the fabric.

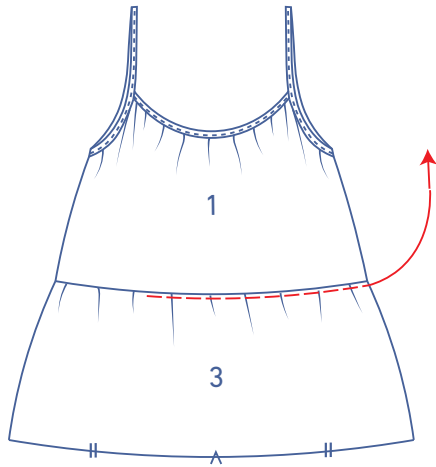


Pin the top of the skirt upper band to the bottom of the bodice right sides together, distributing the gathers until the markings match.

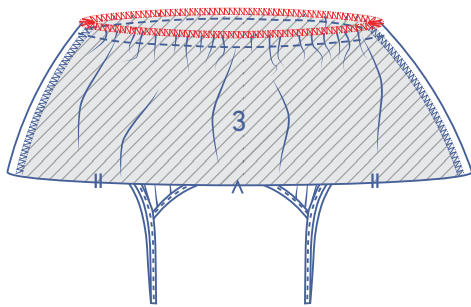


Sew into place.

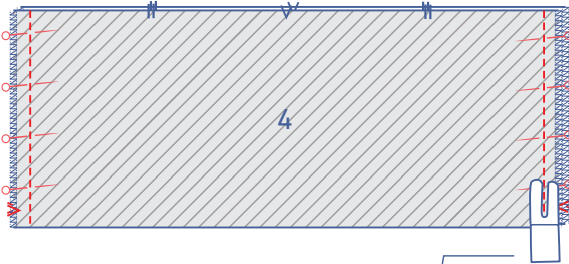




Remove the gathering threads.



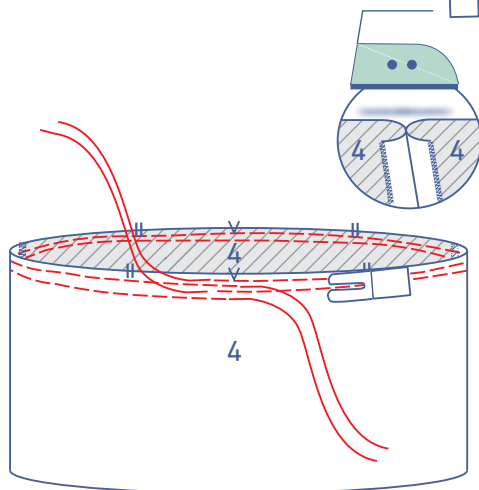
Finish the raw edges together with overlock stitching.



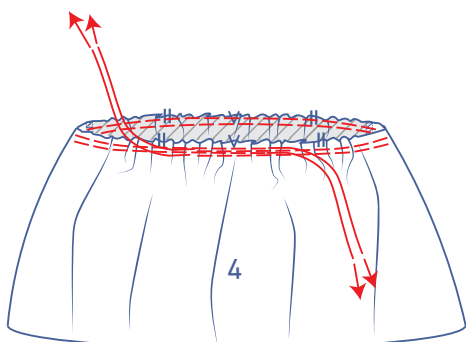
5

Pin and sew the side seams of the skirt lower band pieces together.

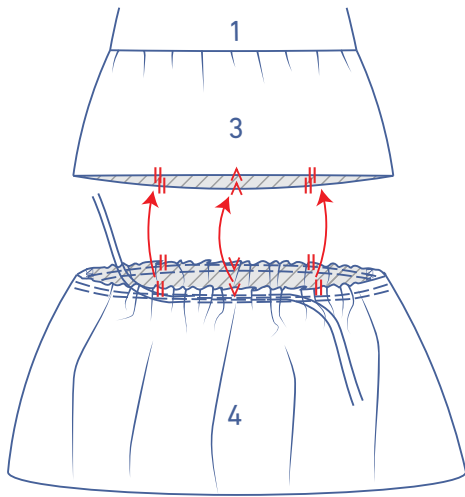
Press the seam allowance open.



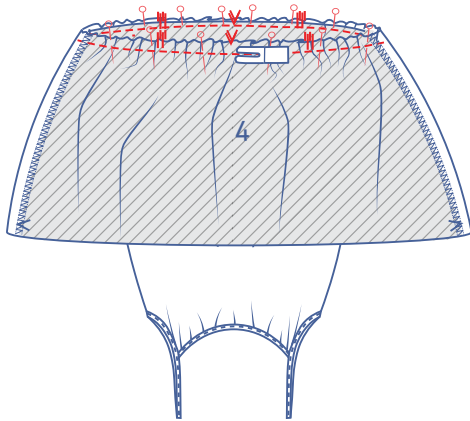
Sew 2 parallel rows of stitching at the top of the skirt lower band with a long stitch length at a low thread tension. Leave a length of thread at the start and end of the rows.



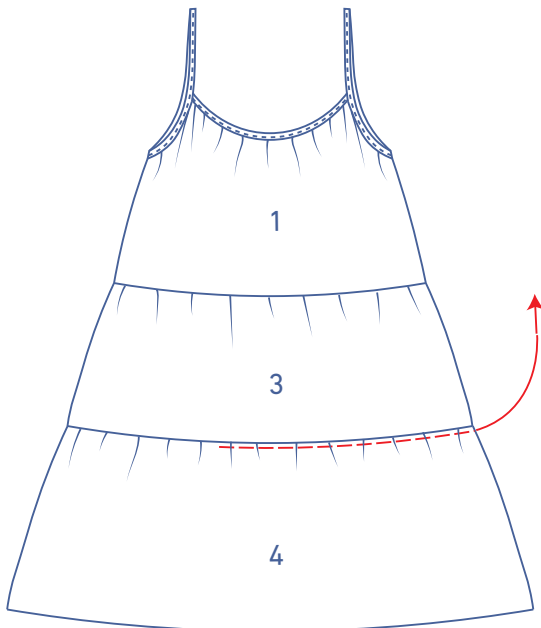
Carefully tug the ends of the threads to gather the fabric.



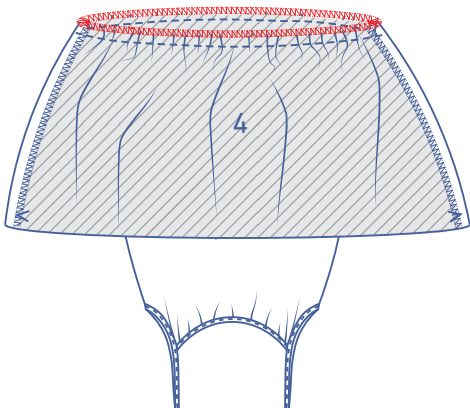
Pin the top of the skirt lower band to the bottom of the skirt upper band, right sides together, distributing the gathers until the markings match.



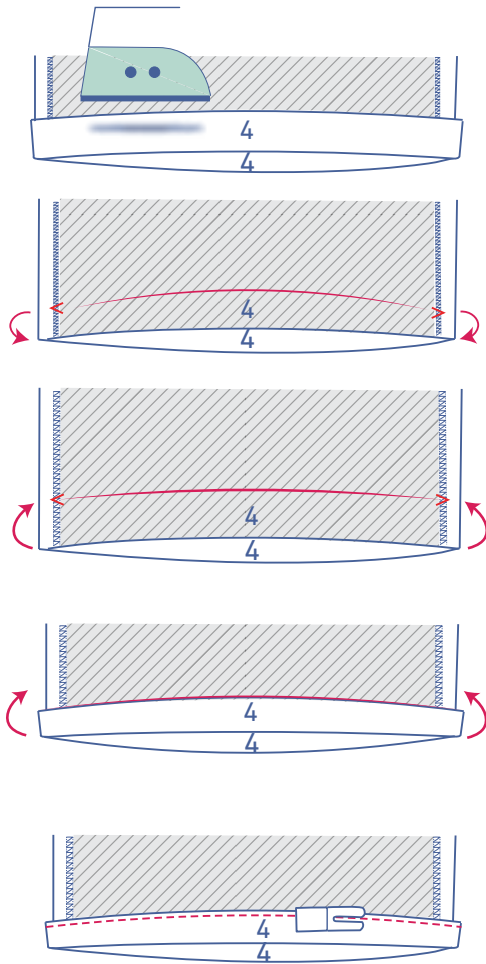
Sew into place.



Remove the gathering threads.



Finish the raw edges together with overlock stitching.



6

Press the hem allowance of the dress over at the V notches and open back out.

Fold the raw edge to the pressed fold line, and then fold over again.

Sew the hem allowance into place right next to the edge.