

# Miles by Fibre ⚡ood

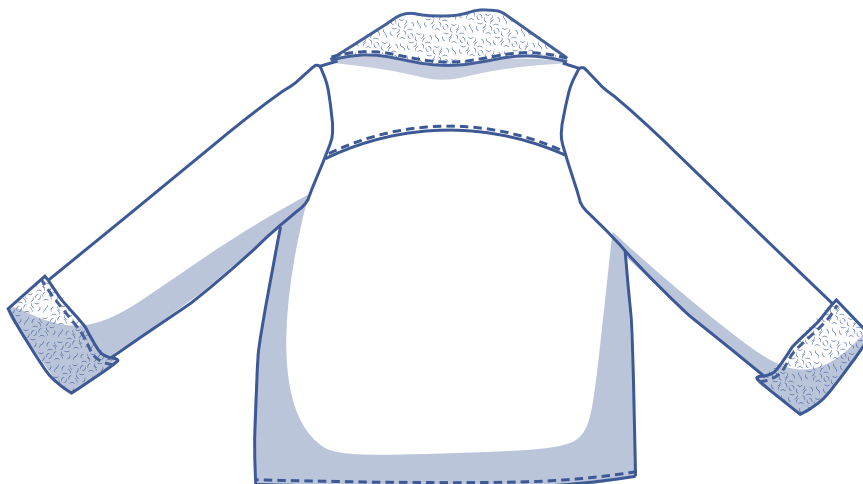


# Miles by Fibre ⚡ood



**2 - 14 years**

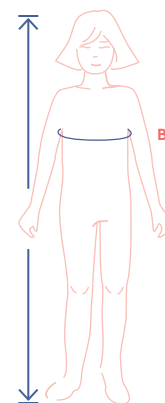
Do I really have to put a coat on? How come? I'm not cold! And then there was Miles...a rough & tumble biker jacket – that is, the cosy winter version. This is a must-have for any kid's wardrobe (and maybe your own!). Not to worry, this project is easier than it looks. The angled zip adds an edginess, and the collar looks great halfway or all the way open. After all, it's not that cold yet is it? And of course we've added a couple of handy welt pockets on the front. Miles bundles you up nice and warm in style. It's the best of both worlds. Chances are good that you won't be able to get your son or daughter to take this coat off again. 😊



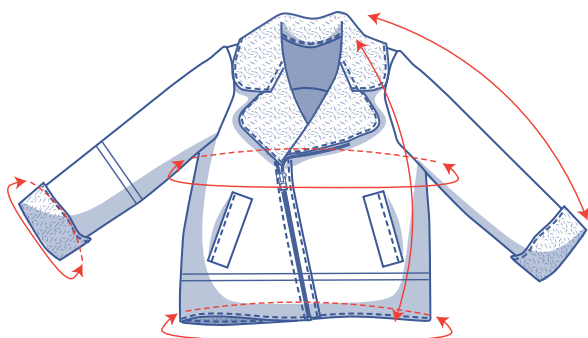
## size chart (in inches)

size	2	3	4	5	6	8	10	12	14
body height	3'02"	3'22"	3'41"	3'61"	3'81"	4'1"	4'49"	4'92"	5'25"
B (bust)	20.5	21.3	22	22.8	23.6	25.2	26.8	28.3	29.9

To select the right size for this pattern, the chest measurement should be your guideline (regardless of age or height). Pick the size closest to the actual chest measurements. Next, alter the length of the chosen size based on your child's age or height, listed in the table below.



## pattern measurements (in inches)

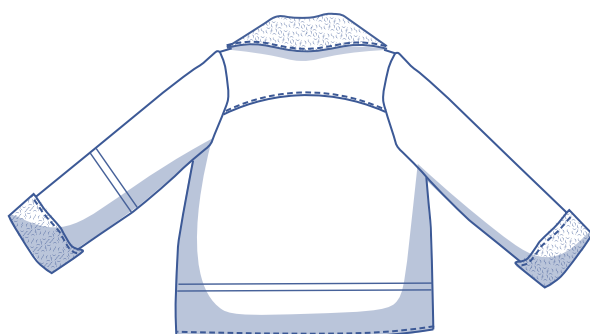


— shorten or lengthen the pattern here

This chart's measurements are the pattern measurements based on the fabric type and serve as a reference. Ease has been added to the width measurements (in addition to the exact body measurements) for a more comfortable fit. Miles is designed to have a comfortable cut. Depending on the preferred cut, you could decide to go a size smaller or larger than the recommended size.

size	2	3	4	5	6	8	10	12	14
length	15.80	16.90	18	19	20.10	22.20	24.40	26.50	28.70
sleeve length*	14.9	16.1	17.3	18.5	19.7	22.1	24.5	26.8	29.2
bust	28.50	29.30	30.10	30.90	31.60	33.20	34.80	36.40	37.90
hem circumference	29	29.80	30.60	31.30	32.10	33.70	35.30	36.90	38.40
sleeve hem circumference	9	9.20	9.40	9.60	9.80	10.20	10.60	11	11.40

\* Including shoulder length.



Compare the stated lengths to the measured or desired lengths. **Lengthen** or **shorten** the coat and/or sleeves by cutting the pattern pieces at the indicated double lines. Then either increase the distance between the cut pieces by the desired amount (to lengthen), or overlap the pieces (to shorten). Make sure that the CF and CB lines and the side seams are always straight.

### IMPORTANT

Adjust the amount of fabric to be used based on these alterations.

## supplies



- Thread
- Lining: max.  $\frac{1}{3}$  yd
- Open-end zip: see table for length
- Fabric: see table

Open-end zip		2	3	4	5	6	8	10	12	14
length	yd	10	12	14	14	16	18	20	22	24

fabric		2	3	4	5	6	8	10	12	14
fabric width 43"	yd	1 $\frac{1}{4}$	1 $\frac{1}{4}$	1 $\frac{1}{4}$	1 $\frac{1}{4}$	1 $\frac{1}{2}$	1 $\frac{3}{4}$	2 $\frac{1}{4}$	2 $\frac{1}{2}$	2 $\frac{1}{2}$
fabric width 55"	yd	1	1	1	1	1 $\frac{1}{4}$	1 $\frac{1}{2}$	1 $\frac{3}{4}$	1 $\frac{3}{4}$	2

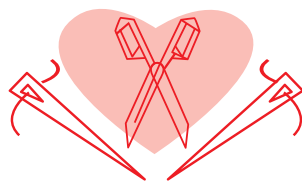
The corresponding fabric layout can be found on page 6 of these sewing instructions.

## fabric advice



Warm and sturdy is the way to go for Miles as long as the fabric is reversible. Tinker to your heart's content with choices such as reversible shearling, for example (suede or leather on the one side and Teddy fabric on the other). Or go for a thick, tight-knit jersey with, for example, two coloured sides that don't require any additional edge finish.

# Proud to be #Sewista



## pattern pieces & seam allowances (in inches)

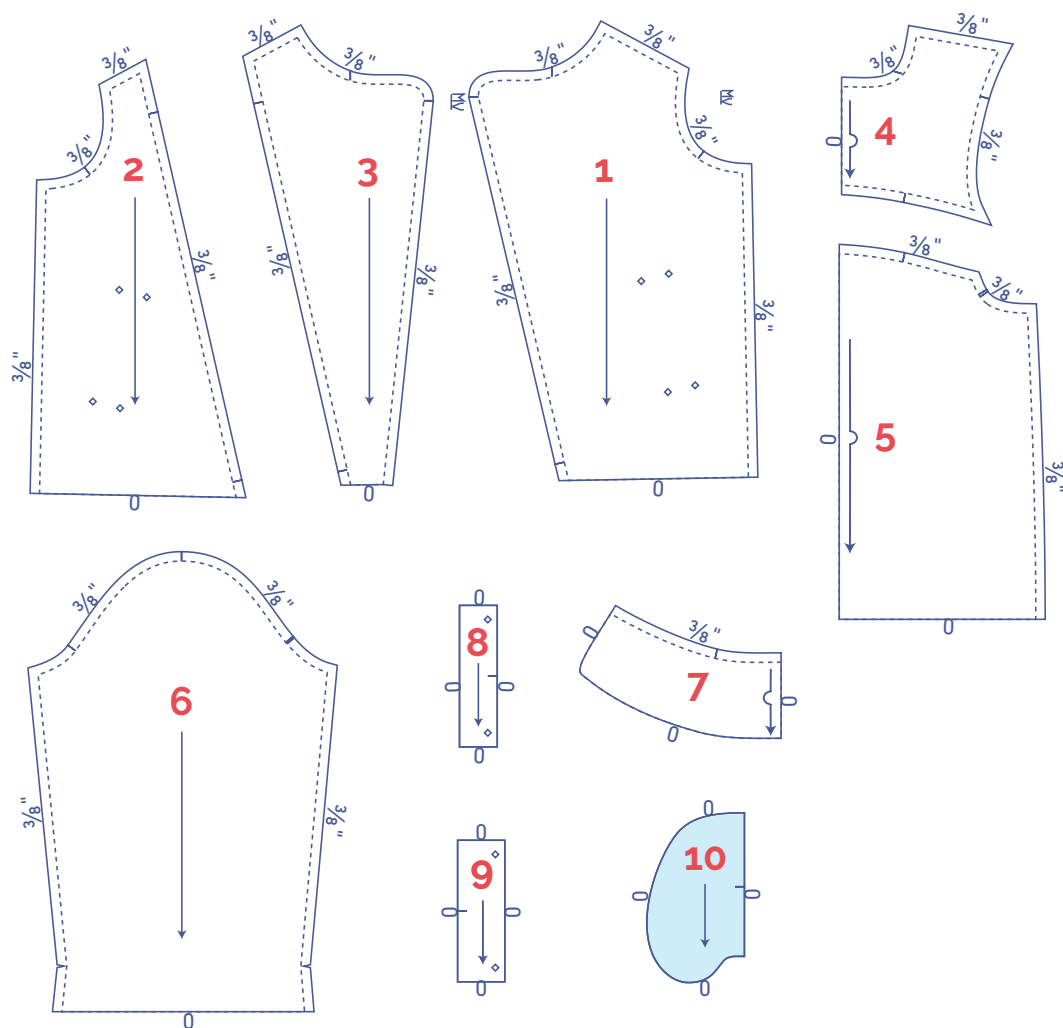
To sew the garment as described in the instructions, draw the illustrated seam allowances around the paper pattern pieces before cutting them out. If you are using a PDF pattern, the pattern can be printed with or without seam allowance.

To find out more, watch the [video](#).

### IMPORTANT

These are the pattern pieces and related seam allowances for sewing the Miles coat in a double faced fabric (= reversible fabric). The coat does not involve any facing because the type of fabric makes it unnecessary.

1. left front: 1x
2. right front piece A: 1x
3. right front piece B: 1x
4. yoke: 1x on fabric fold
5. back: 1x on fabric fold
6. sleeve: 2x
7. collar: 1x on fabric fold
8. welt: 2x
9. pocket opening: 2x
10. pocket: 4x



material type	
	fabric
	lining

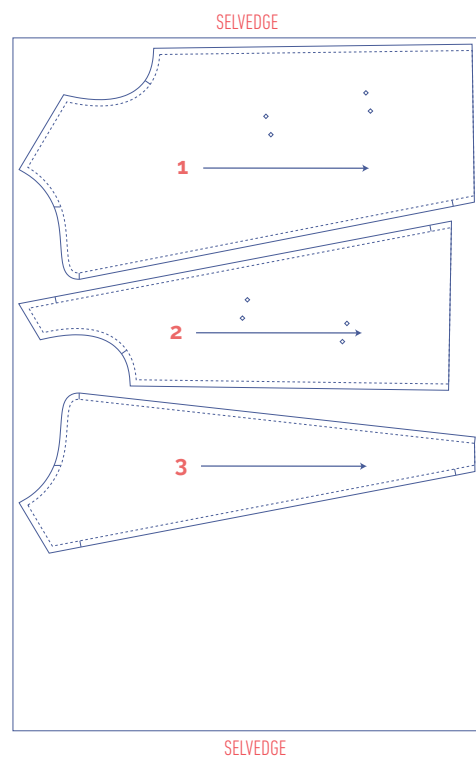
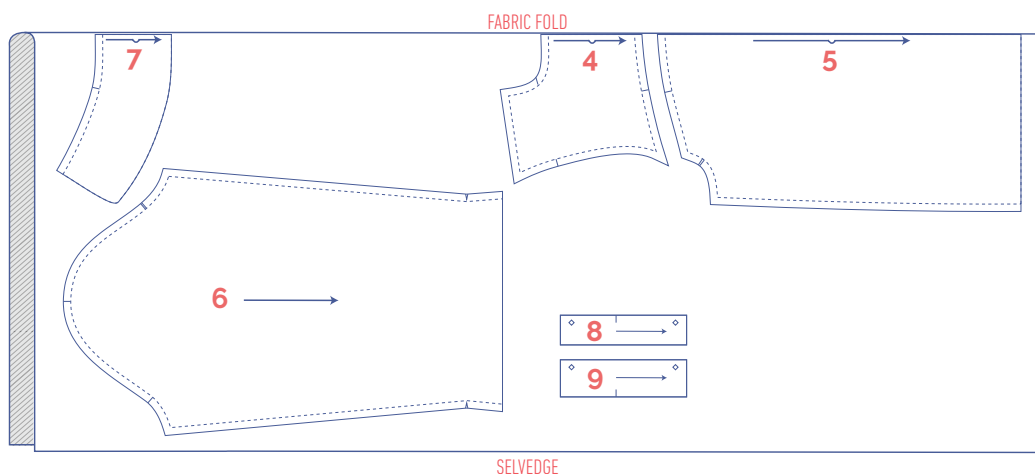
## fabric layout – solid fabrics

### fabric width 43"

#### IMPORTANT

- The fabric has a nap. The pile of the nap is determined by the direction of the fibres (pile). The right and wrong sides of the fabric both have a nap.
- It is the nap on the inside of the coat that is the most important. If the nap runs in the wrong direction on the inside, it can cause clothes worn under the coat to inch up. For that reason, make sure that the pile on the inside lays neatly flat when you run your hand over it from top to bottom.

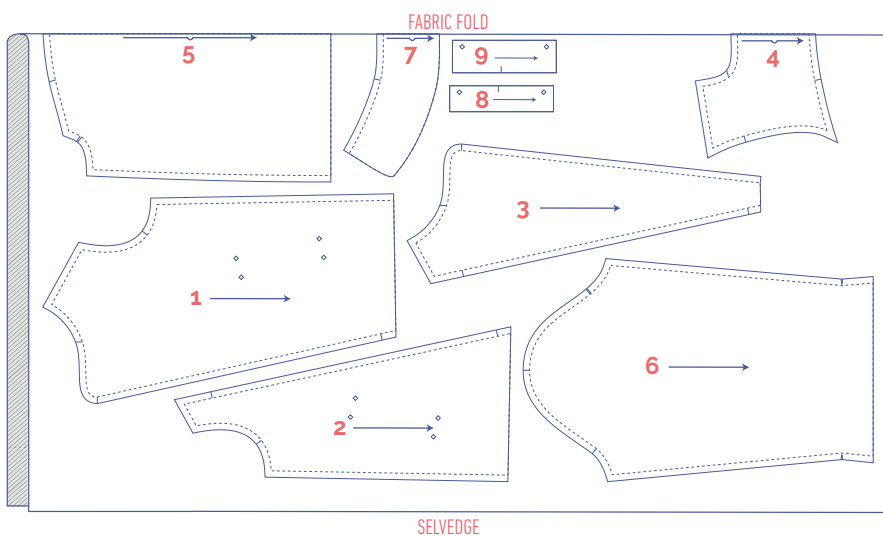
2 - 14 years



## fabric layout – solid fabrics

### fabric width 55"

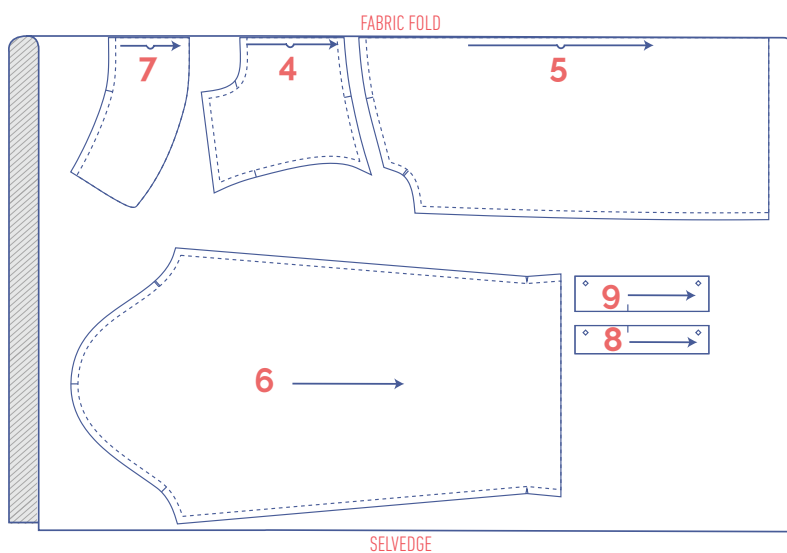
2 - 8 years



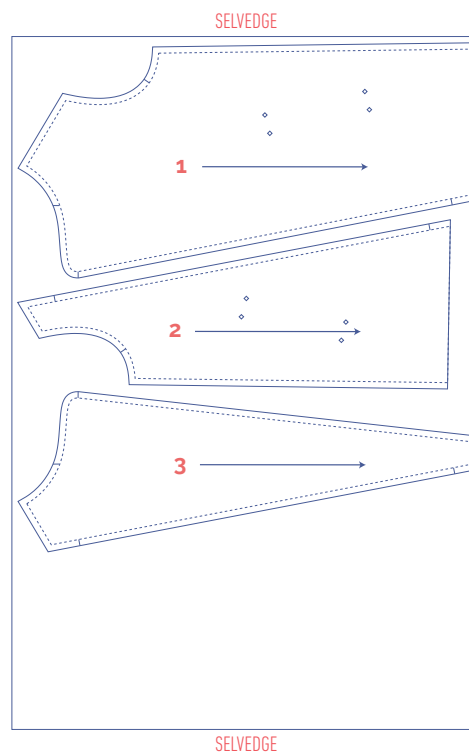
### IMPORTANT

You only need pattern pieces 1, 2 and 3 once.

10 - 14 years



+



## marking pattern pieces

	notch the pattern paper and fabric at the following points
	single notch
	double notch
V	V notch

	mark the following points using marking thread
	centre point

# sewing instructions



The method used to finish the seams depends on the fabric used.  
The pieces are always sewn together with the right sides of the fabric facing, unless stated otherwise.

## IMPORTANT!

The sewing instructions were created for a specific type of fabric. The fabric doesn't fray, which means there is no need to finish the raw edges with overlock stitching. However, while the fabric doesn't fray, when cut, it may produce a lot of loose bits of fluff.

F front

B back

RF right front

LF left front



right side



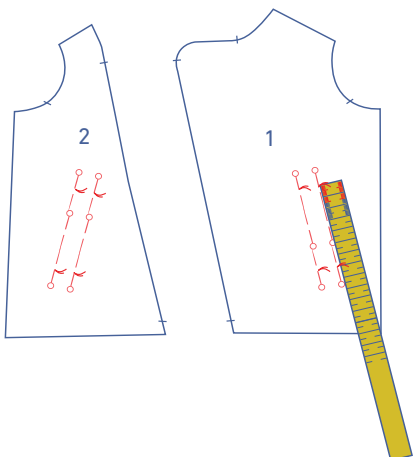
wrong side



lining right side



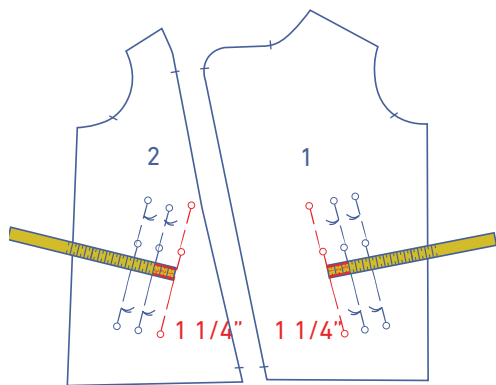
lining wrong side



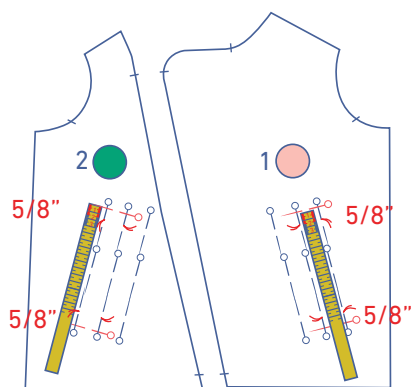
## 1

Connect the marking threads that indicate the corners of the finished pockets on the LF (1) and RF A (2) with pins (use a ruler).

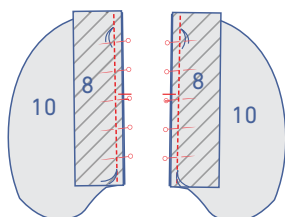




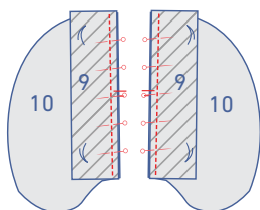
Make a row of pins 1 1/4" parallel to the long end closest to the CF (using a ruler, set square, or measuring tape).



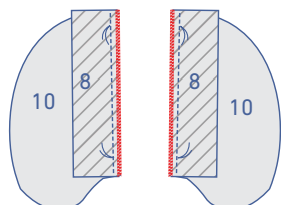
Use the same technique to make a 5/8" line at the top and bottom of the pocket opening.



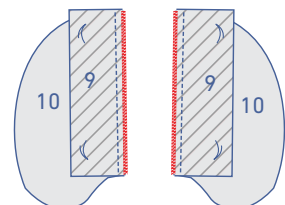
Pin and sew 2 of the 4 pocket pieces in lining (10) to the welt (8) with the notches matching using a 1cm seam allowance.

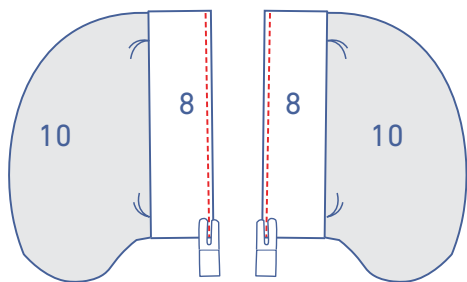


Pin and sew the other pocket pieces to the pocket opening (9), matching the notches.

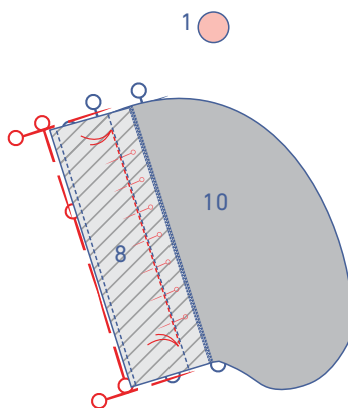
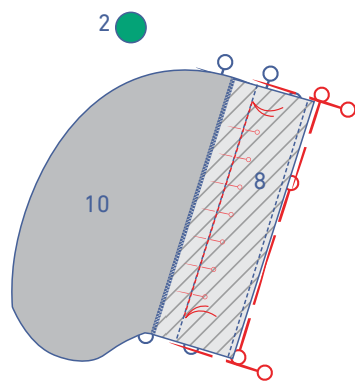


Finish all raw edges together with overlock stitching.

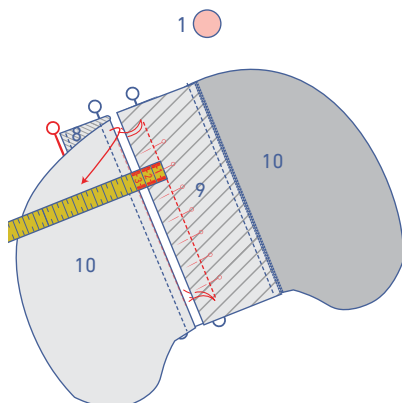
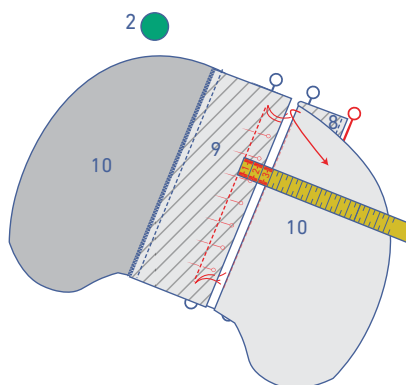




Fold over the welt, then edgestitch along the end (you are only stitching through one layer).



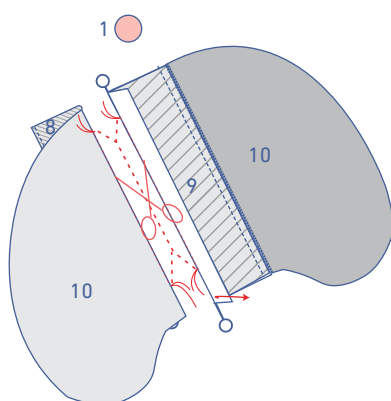
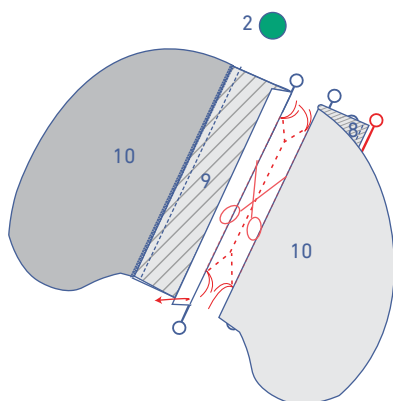
Flip over your pieces. Place the end of the welt (that you just stitched) against the row of pins that are 1 1/4" away from the pocket on the LF and RF A. The right side of the welt (= the suede side) should be facing down. Sew each welt to the front by sewing between the marking threads.



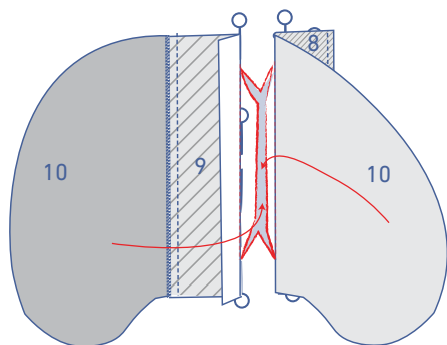
Fold the pocket lining attached to the welt (8) over. Then place the pocket opening / pocket (9+10) (right side facing down) next to 8+10.

Draw a chalk line between the marking threads on (9) and make sure this is 1.2" from the the folded edge of 8+10 as shown in the diagram.

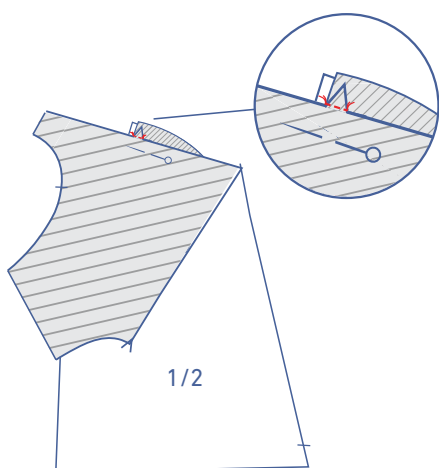
Pin into place and sew between the marking threads.



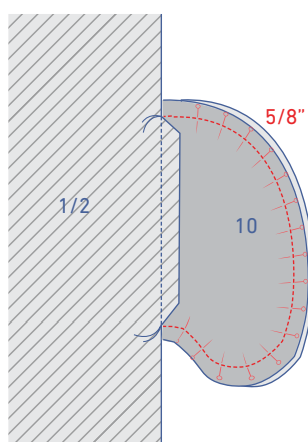
Fold all the pieces out of the way as shown, then snip into the front between the two rows of stitching, stopping 3/4" away from the marking threads. At the end of the line you just cut, snip diagonally into each corner. Make sure that you only snip into the front!



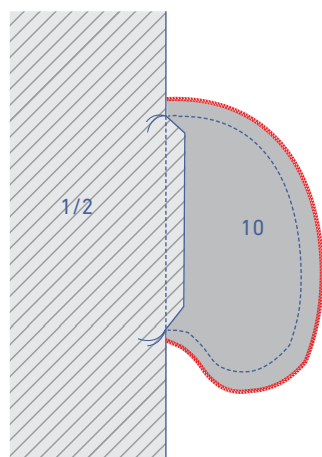
Fold the pieces through the opening towards the wrong side of the front. Fold the cut triangles (= the 4 diagonal lines cut) on either side of the pocket opening through to the wrong side as well.



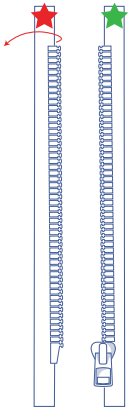
Lay all pieces neatly flat. Fold the front over and sew the triangles to the pocket pieces, working from corner to corner. Make sure that you create neat right angles.



Pin and sew the contours of the pocket pieces together (at 5/8").

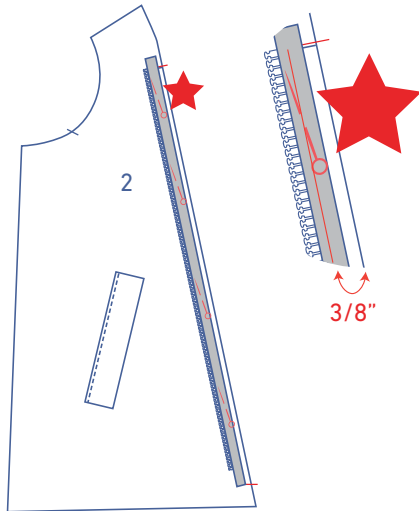


Finish the raw edges together with overlock stitching.



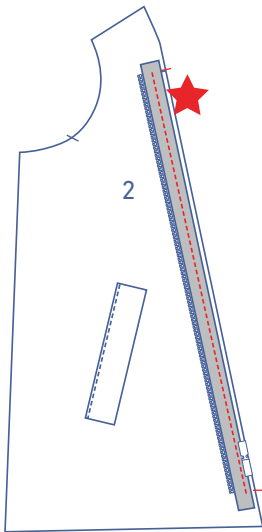
## 2

Place the open-end zip with the right side facing up.

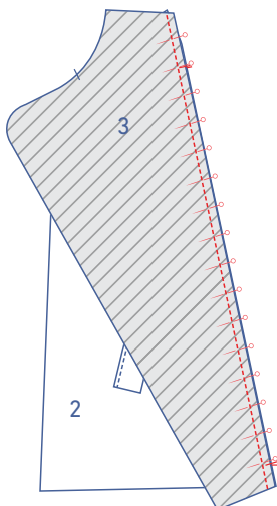


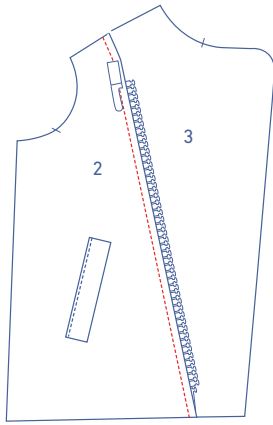
Fold the red-star zip tape to the left and place onto the RF A. Pin the zip tape so that the centre of the zip tape is  $\frac{3}{8}$ " away from the raw edge. The zip teeth should be perfectly aligned between the notches at the top and bottom.

Sew into place with the zipper foot or the narrow zipper foot.

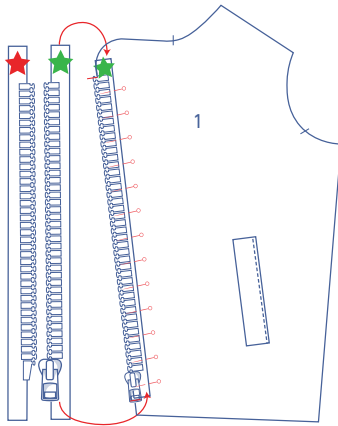


Pin and sew the RF B (3) with the right side facing down onto the RF A + zip.

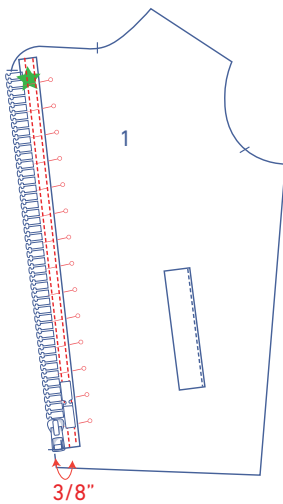




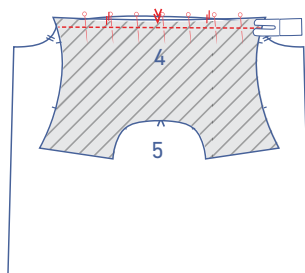
Now open the RF B back out. Topstitch at presser foot width.



Pin the green-star zip tape TO the LF. This time, the zip tape is not folded over, but is placed with the right side facing up ON the LF. The centre of the zip tape should be 3/8" away from the raw edge.

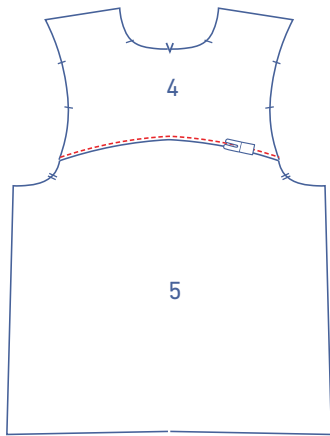


Stitch the zip tape into place down both sides so that it stays securely in place.



### 3

Pin and sew the yoke (4) and the back (5) together, matching the notches.

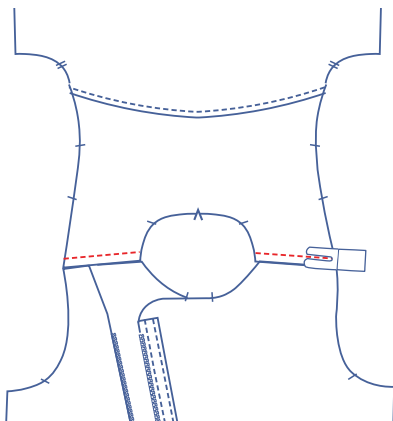


Press the seam allowance up and topstitch the yoke at presser foot width.

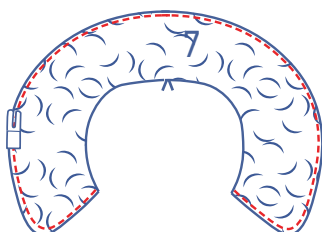


**4**

Pin and sew the shoulder seams together.

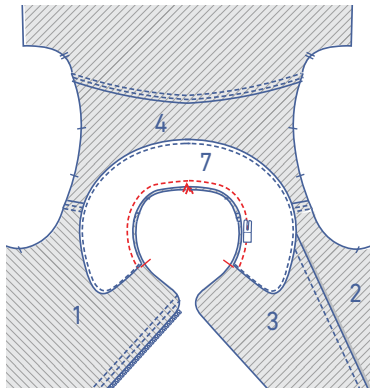


Fold the seam allowances up and topstitch the yoke at presser foot width.

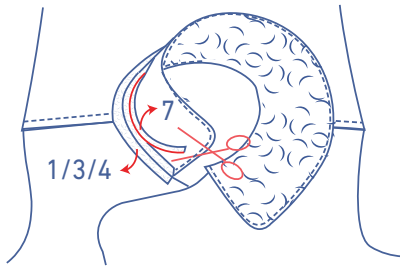


**5**

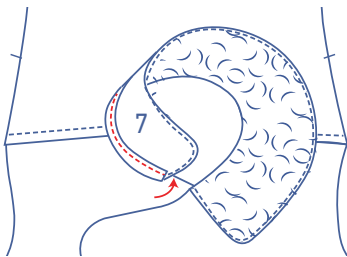
Stitch all the way around the outer edge of the collar.



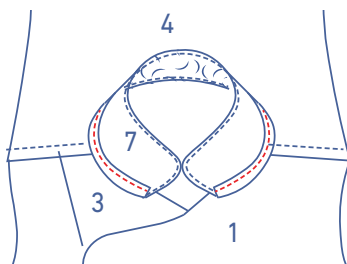
Lay the garment with the wrong side facing up. Lay the collar with the 'right side' (= the suede side) facing up. The ends of the collar should match the single notches on the neckline, and the V notches should be matching. Pin and sew into place.



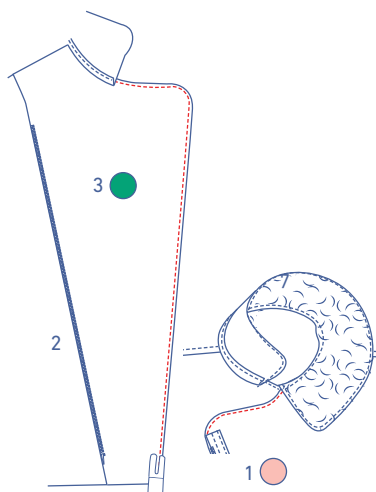
Turn the garment so that the right side is facing up. Fold the collar to the side. Snip off a piece of the collar's seam allowance to reduce bulk.



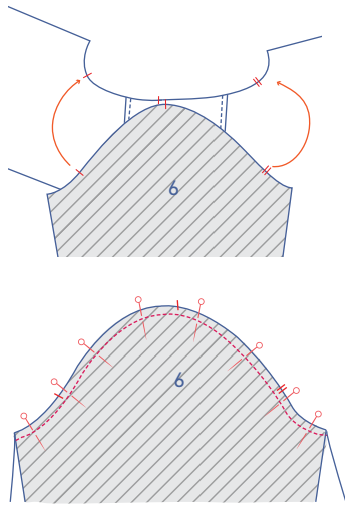
Fold the seam allowance of the coat up so that it covers the seam allowance of the collar.



Sew the seam allowance to the collar next to the edge.

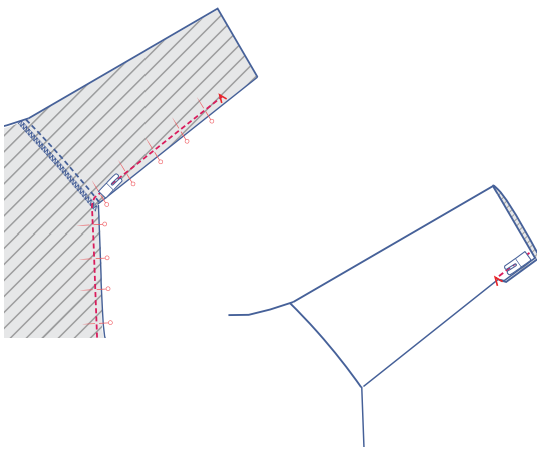


Finish the stitching down the edge of the lapel. Stitch along the edge of the lapel on the LF as well.



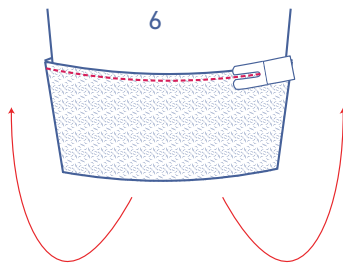
## 6

Pin and sew the sleeve to the armhole, with the corresponding notches matching. The sleeve's single notch should match the notch in the front, with the sleeve's double notch matching the double notch in the back, and the top single notch should match the single notch marking the true shoulder. Divide the fabric between the markings.



Fold the sleeve in half lengthwise with the front and back facing. Pin and sew the underarm and side seams together up to the V notch in the sleeve hem.

Turn the sleeve the right way out. Stitch the piece between the V notch to the hem with the wrong sides touching. Basically, that piece at the hem will be folded up, so that the seam allowance is hidden.



Press the hem allowance of the sleeve over onto the right side of the garment. Edgestitch into place.

## 7

Finish by topstitching all along the very edge of the hemline.

