

Frida by Fibre ⚡ood



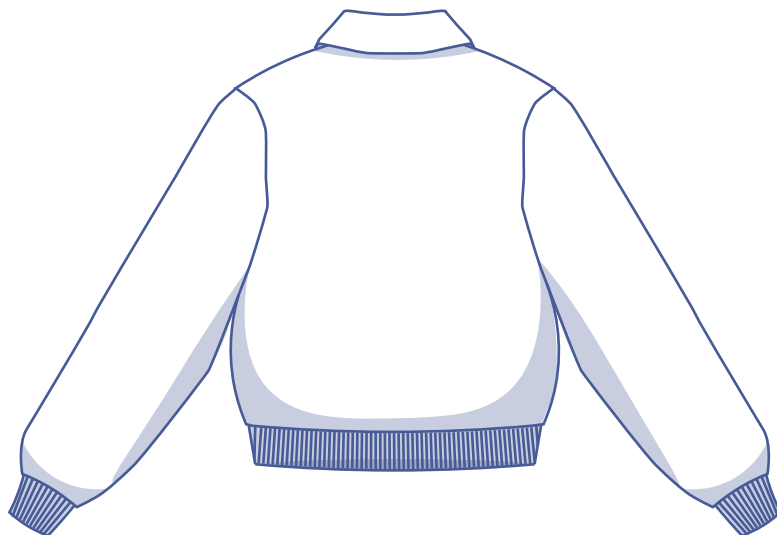
Frida by Fibre ⚡ood

***✂✂



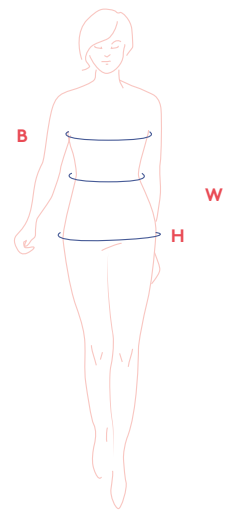
XS - XXXL

Here we give you a classic design, livened up with a modern twist ~ the Frida bomber jacket. Fun fact: bomber jackets were once worn exclusively by the military, whereas now it's impossible to imagine the street scene without them. Which makes sense; it's the perfect piece for styling in multiple ways. Make the Frida in a fun or chunky fabric, leopard print wool or even a faux fur. Either way, Frida will keep you warm and cosy this winter.



size chart

size	XS		S		M		L		XL		XXL		XXXL	
EU	32	34	36	38	40	42	44	46	48	50	52	54	56	58
UK	4	6	8	10	12	14	16	18	20	22	24	26	28	30
US	0	2	4	6	8	10	12	14	16	18	20	22	24	26
B (cm)	76	80	84	88	92	96	100	104	116	122	128	134	140	146
B (inches)	29.9	31.5	33.1	34.6	36.2	37.8	39.4	40.9	43.3	45.7	48	50.4	52.8	55.1
W (cm)	66	68	70	74	78	82	84	88	94.5	101	107.5	114	120.5	127
W (inches)	26	26.8	27.6	29.1	30.7	32.3	33.1	34.6	37.2	39.8	42.3	44.9	47.4	50
H (cm)	86	90	94	97	100	103	106	109	115	120	125	130	135	140
H (inches)	33.9	35.4	37	38.2	39.4	40.6	41.7	42.9	45.3	47.2	49.2	51.2	53.1	55.1



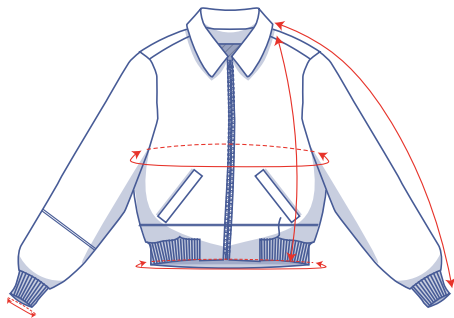
Bust (B): measure horizontally around the widest part of the chest.

Waist (W): measure horizontally around the smallest part of the waist.

Hips (H): measure horizontally around the widest part of the lower body.

To select the right size for this pattern, the bust measurement should be your guideline. Pick the size that is the best match for your bust. Altering the hips is simple. When you are tracing the waist, simple merge between the two lines for a custom size that suits you best.

finished garment measurements (in cm)



This chart's measurements are based on the fabric type and serve as a reference. Ease has been added to the width measurements (on top of the exact body measurements) for a more comfortable fit and to achieve a particular cut (fitted, loose or oversized). Depending on the preferred fit, you can choose to size up or down accordingly.

size	XS	S	M	L	XL	XXL	XXXL
length	59.5	59.5	59.5	59.75	63.75	64	64.25
sleeve length*	71.75	73	74.5	76.25	79.5	81.75	83.75
bust	91.5	99.5	107.5	115.5	125.5	137.5	149.5
total hem circumference	66.75	72.25	77.75	83.5	89.75	98.5	107.25
wrist trim circumference	17.5	18	18.75	19.25	20	20.5	21.25

* Including the shoulder length and wrist trim.

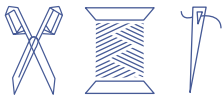
Compare the stated lengths to the measured or desired lengths. **Lengthen** or **shorten** the jacket and/or sleeves by cutting the pattern pieces at the place(s) indicated by a double line on the drawing above and then spreading the pattern pieces out X cm from each other or overlapping them, where necessary. Make sure that the CF and CB lines and the side seams are always straight.



IMPORTANT

Adjust the fabric to be used based on these alterations.

supplies



- Thread
- Iron-on interfacing: max. 65 cm
- Open-end zip: 50 cm (sz. XS-L), 55 cm (sz. XL-XXXL)
- Cuff fabric: see table
- Lining: max. 30 cm
- Fabric: see table

cuff fabric (in cm)	XS	S	M	L	XL	XXL	XXXL
35 cm wide	35	35	35	55	55	55	55

fabric used (in cm) F collection	XS	S	M	L	XL	XXL	XXXL
teddy fabric fabric width 155 cm	115	120	120	150	155	160	170
leopard print wool fabric fabric width 145 cm	140	140	140	160	170	170	175

Discover the Fibre Mood fabric collection and the accompanying fabric layouts [here](https://www.fibre mood.com/en/fabrics) or on www.fibre mood.com/en/fabrics.

fabric used (in cm) standard	XS	S	M	L	XL	XXL	XXXL
fabric width 140 cm	140	140	145	160	170	170	175

The corresponding fabric plan can be found on the last page of these sewing instructions.

fabric advice



Several different fabric types work well when it comes to making the Frida bomber jacket. From woven wool coating fabric to knit wool (jacquard) jersey. Even sweatshirt fabric, Ponte Roma, scuba and neoprene all make good alternatives. Satin, embroidered fabrics, faux leather and felt also work – each option lends the jacket a totally different look.

sewing instructions



The method used to finish the garment will depend on your chosen fabric. The pieces are always sewn together with right sides facing, unless stated otherwise.

F front

B back

RF right front

LF left front

CF centre front

CB centre back



right side



wrong side



lining right side



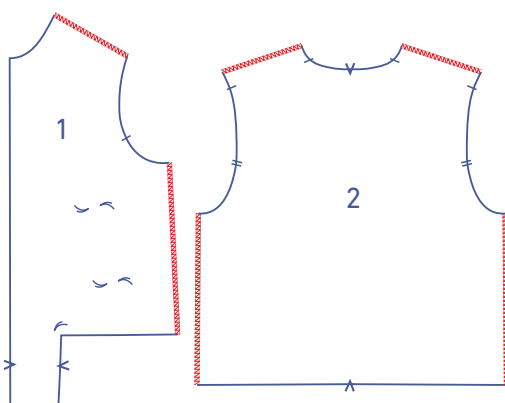
lining wrong side



cuff fabric

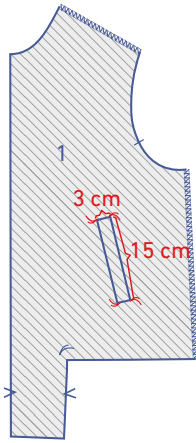


iron-on interfacing

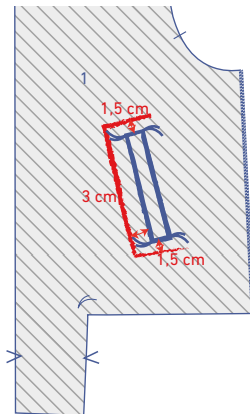


1

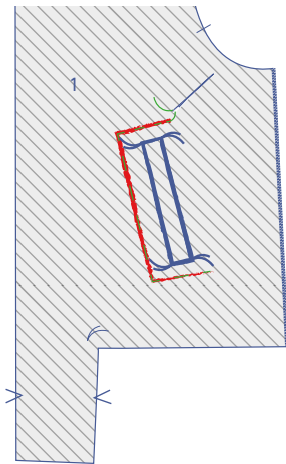
Finish the shoulder and side seams of the front (1) and back (2) with overlock stitching.



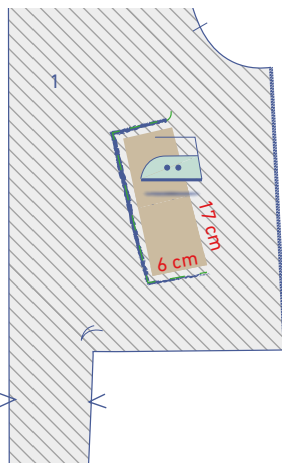
Connect the corners of the pocket opening (indicated by basting thread) along the wrong side of the front by drawing straight chalk lines. You should end up with a 3x15 cm rectangle.



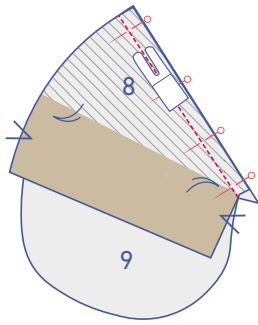
Draw a single guideline 3 cm parallel to the long side of the pocket opening on the CF side and two guidelines 1.5 cm parallel to the short ends.



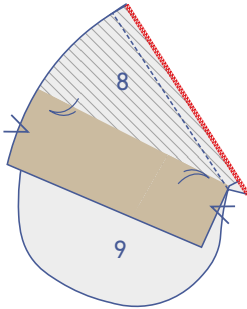
Use a brightly coloured thread to baste along these 3 chalk lines, so that the guidelines are visible from the right side of the front.



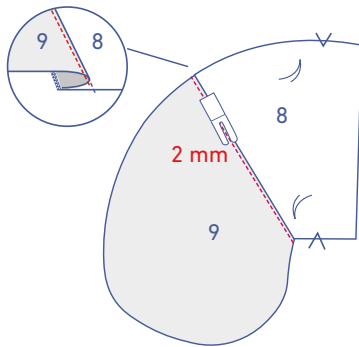
Press a strip (6x17 cm) of iron-on interfacing over the basting threads along the wrong side of the front.



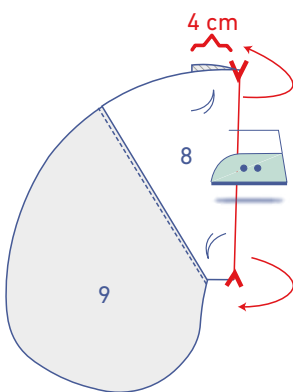
Pin and sew the slanted edge of the pocket welt with inner pocket bag (8) to the slanted edge of the pocket (9).



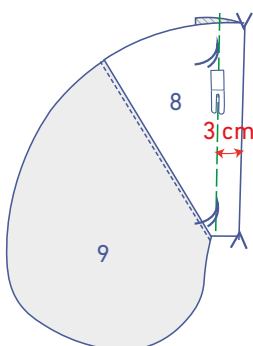
Finish the raw edges together with overlock stitching.



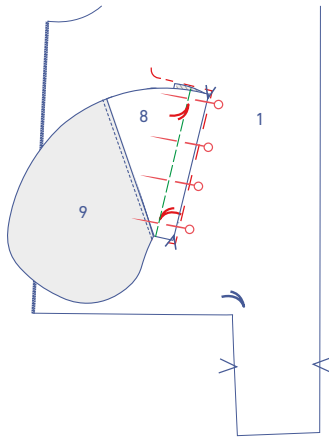
Fold the pocket welt with inner pocket bag and the seam allowance over so that the seam allowance faces towards the pocket lining. Understitch the pocket lining at 2 mm from the seam, through all layers (pocket lining + underlying seam allowance).



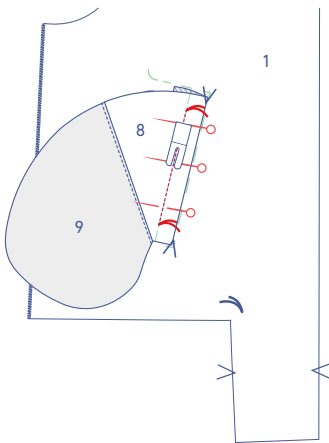
Press the pocket welt at the V notches (= 4 cm from the raw edge) on the wrong side with the right side of the fabric facing outwards.



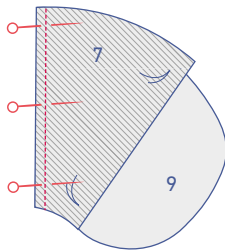
Using a basting stitch length, sew a guideline 3 cm parallel to the fold line running the full length of the pocket.



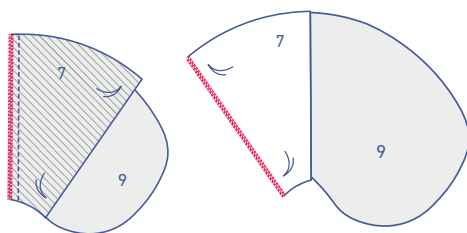
Place the pocket welt's fold line against the long marked side (the folded pocket welt = the shortest end is at the bottom) and the edges of the pocket between the 2 other marked sides. Pin the pocket welt with pocket to the front with the basting threads indicating the pocket welt, perfectly aligned.



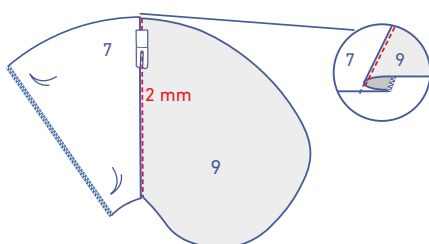
Pin the pocket welt with inner pocket bag to the front along the basted guideline that you made earlier. Sew precisely from one end of the basting to the other.



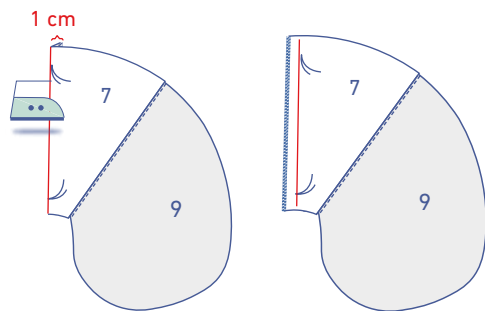
Pin and sew the slanted side of the outer pocket bag (7) to the slanted side of the pocket lining.



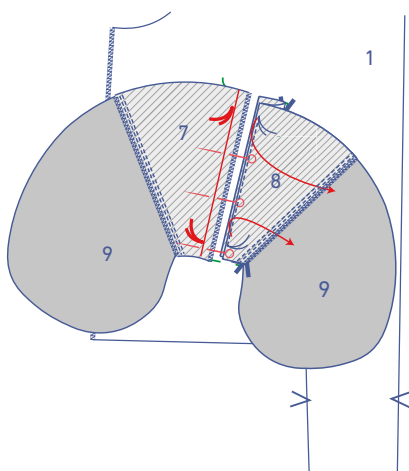
Finish the raw edges together with overlock stitching. Finish the straight side of the outer pocket bag too with overlock stitching.



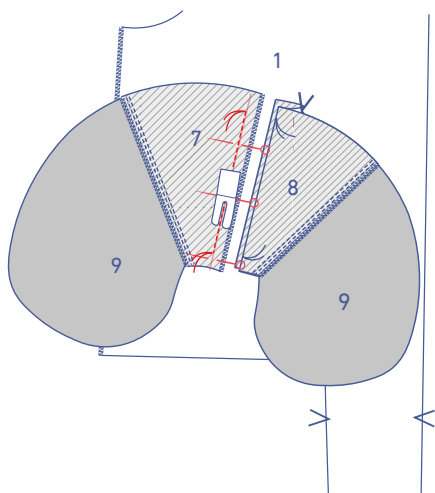
Fold the seam allowance towards the pocket lining. At 2 mm from the seam, understitch the pocket lining through all the layers (pocket + underlying seam allowance).



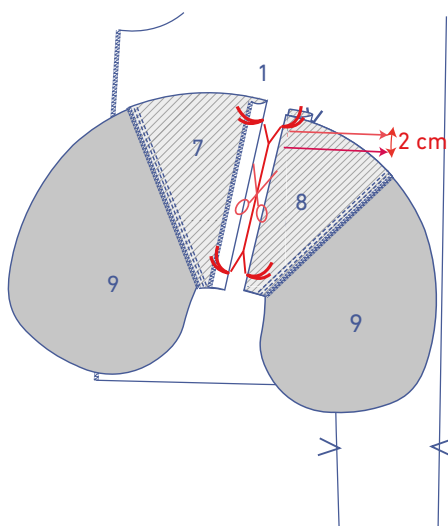
Press 1 cm of the outer pocket bag's seam allowance over to the wrong side to create a fold line. Now, open back-out.



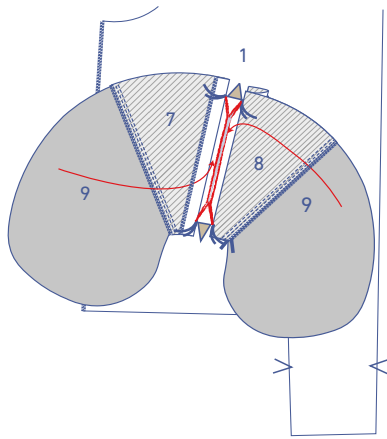
Fold the inner pocket bag + pocket lining (8 + 9) along the stitching. Pin the outer pocket bag + pocket lining (7 + 9) to the front with the basting threads matching. Important: the seam allowance should be flat.



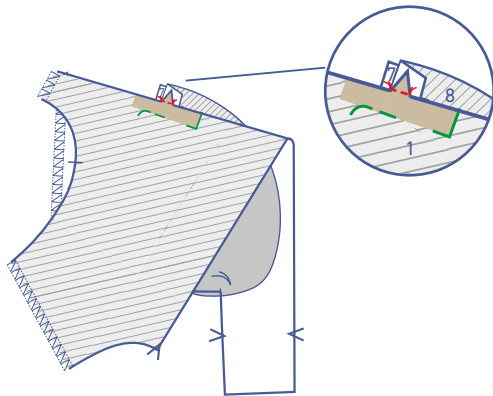
Sew right in the fold line from basting thread to basting thread.



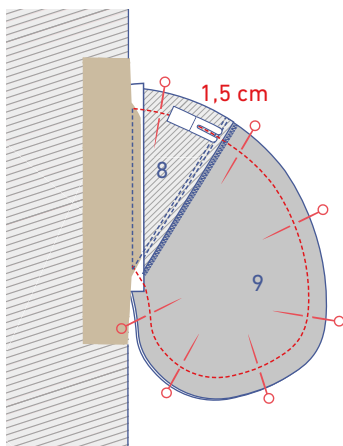
Fold both pocket pieces over and snip into the front between the 2 rows of stitching, stopping 2 cm away from the basting. At both ends of the centre line, snip four diagonal lines up to the corners. Make sure that you only snip through the front and not into the pocket pieces.



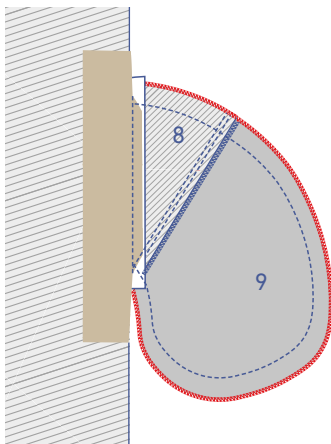
Fold the pocket pieces through the opening towards the wrong side of the front. Fold the cut triangles (= the 4 diagonal lines cut) on either side of the pocket opening to the wrong side as well.



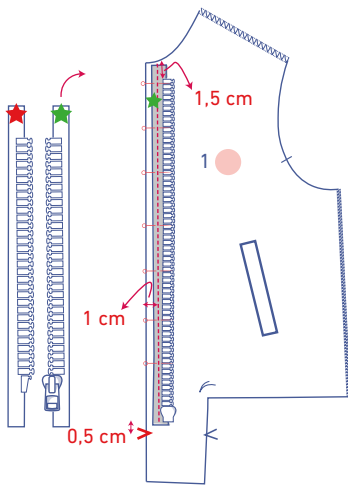
Lay both pocket pieces neatly flat, fold the front over and sew the triangles to the pocket pieces, working from corner to corner. Make sure that you create neat right angles.



Pin and sew the contours of the pocket pieces together.



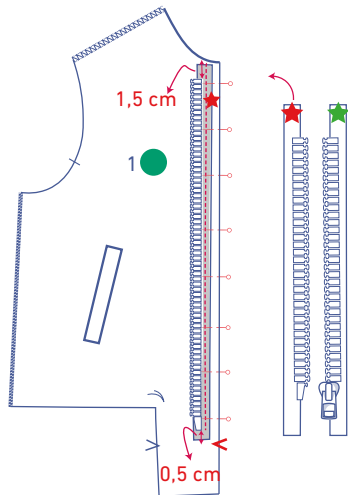
Finish the raw edges together with overlock stitching.



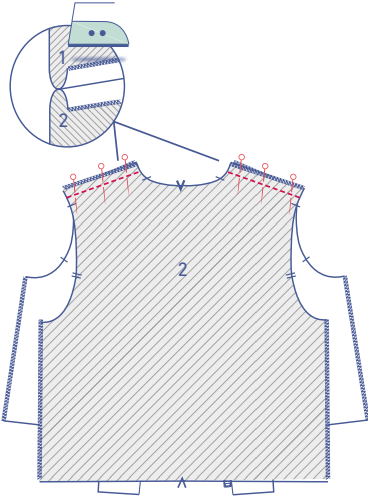
2

First lay the zip with the right side facing up. Turn the zip tape marked with a small green star over to the right and onto the LF.

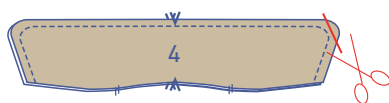
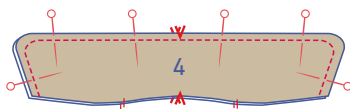
Pin the zip tape to the CF so that the centre of the zip tape is 1 cm away from the raw edge. The zip teeth should lie 1.5 cm under the top end of the zip tape and 0.5 cm above the V notch at the bottom. Sew into place.



Lay the other zip marked with a small red star with the right side facing down onto the RF. Sew in place the same way you did with the other zip tape.



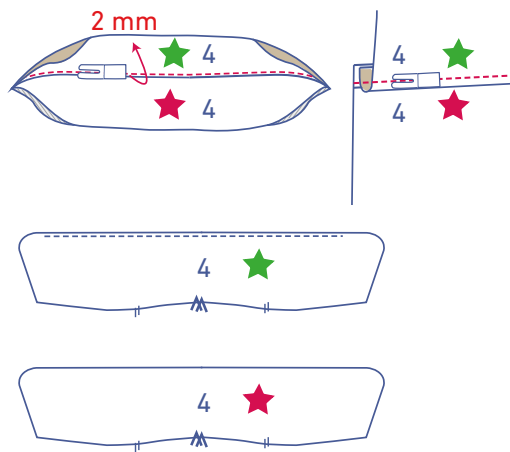
Pin and sew the shoulder seams of the front and back (2). Press open the seam allowance.



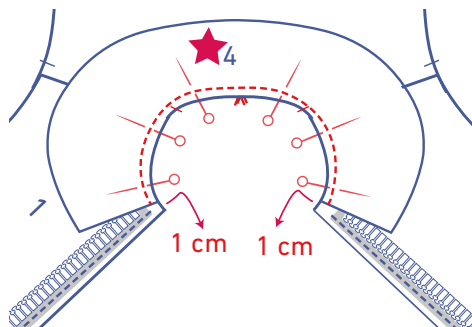
3

Pin and sew the contour of the collars (4) to each other, leaving the bottom edge free.

Trim the seam allowance in the corners. Turn the right way out.



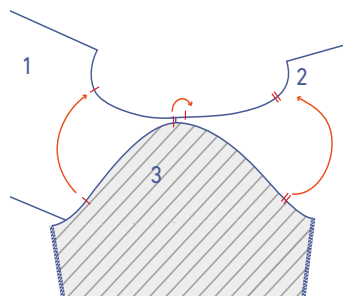
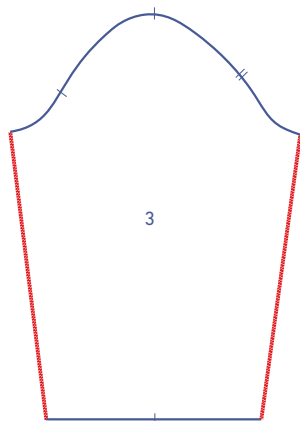
Fold both collar pieces open, so that the right sides are facing up. The upper collar (= visible when you're wearing the jacket) has been indicated with a small red star, while the under collar has been indicated with a small green star. Fold the seam allowance towards the under collar (= green star). Understitch the under collar at 2 mm from the seam through all layers (under collar + seam allowance). Next, neatly press the seams together.



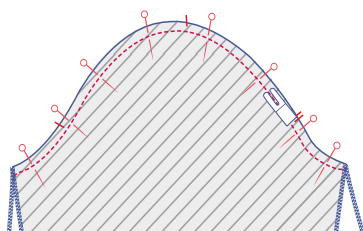
Pin the collar to the neckline with the corresponding marks facing together. The upper collar (= red star) should lie on top. The finished edge of the collar should lie 1 cm away from the raw edge.

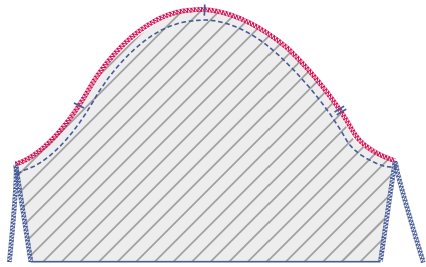
4

Finish the sides of the sleeve (3) with overlock stitching.

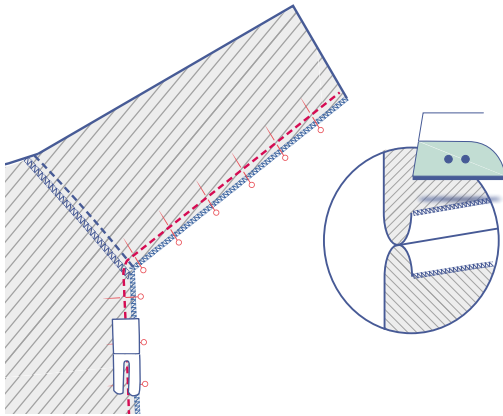


Pin and sew the sleeve to the armhole, with the corresponding nicks matching. The sleeve's single nick should match the nick on the front, with the sleeve's double nicks matching the double nicks on the back, and the top single nick matching the single nick marking the true shoulder. Distribute the fabric between the markings.

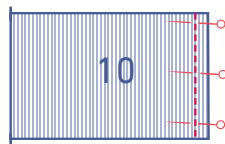




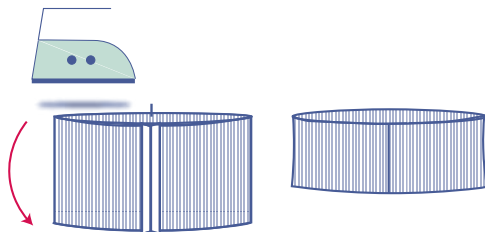
Finish the raw edges together with overlock stitching.



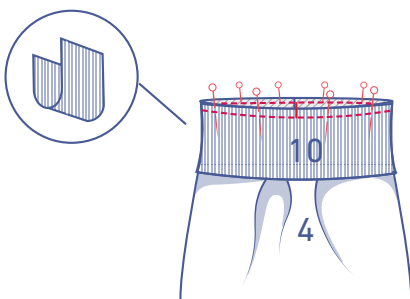
Fold the sleeve in half lengthwise with the front and back facing together and pin and sew the underarm and side seams. Press open the seam allowance.



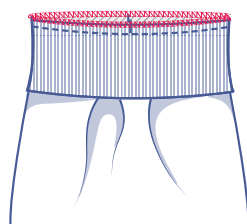
Press the wrist trim (10) in half widthwise with the right side of the fabric facing inwards. Sew the short ends together and press the seam allowance open.



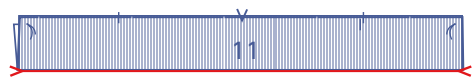
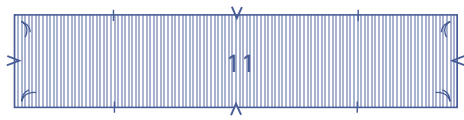
Press the wrist trim (10) in half lengthwise with the right side of the fabric facing outwards.



Pin and sew both raw edges of the wrist trim to the bottom of the sleeve.

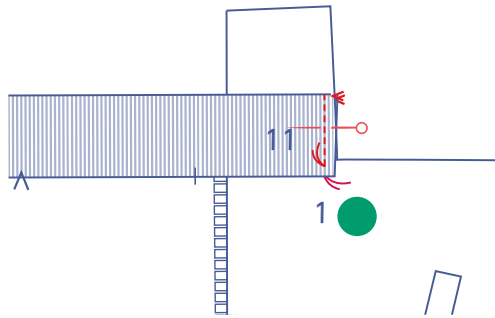


Finish the raw edges together with overlock stitching.

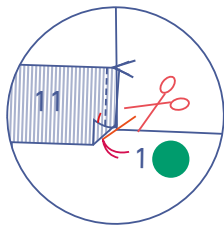


5

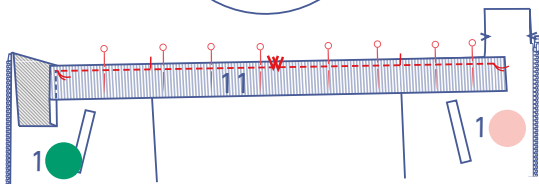
Fold the hem band (11) in half lengthwise with the right side of the fabric facing outwards and press.



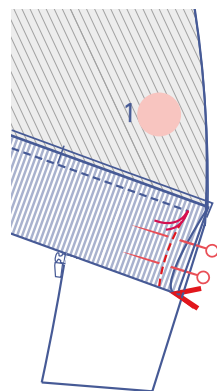
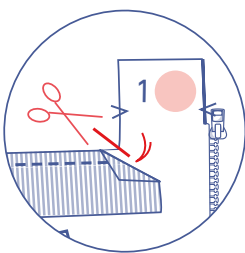
Pin the short ends of the hem band to the indicated side of the RF with basting threads matching. The V notch on the front should line up with the finished edge of the hem band. Stitch right into the basting. Leave the needle lowered in the fabric.



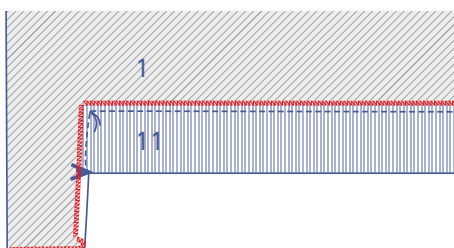
Raise the presser foot and snip into the seam allowance (only the seam allowance) of the front until just before the needle. Turn the piece and lower the presser foot back down.



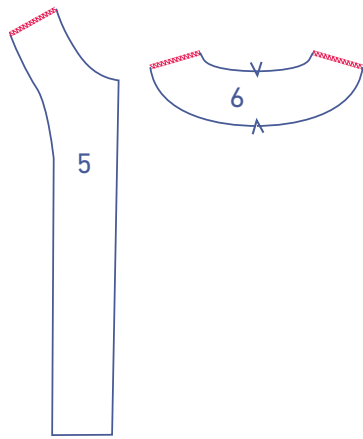
Continue sewing the long end of the hem band into place up to the next basting thread.



Leave the needle in the fabric again, raise the presser and snip into the seam allowance of the front (only the seam allowance) until just before the needle. Turn the piece and lower the presser foot back down and sew the other short end of the hem band up to the V notch.

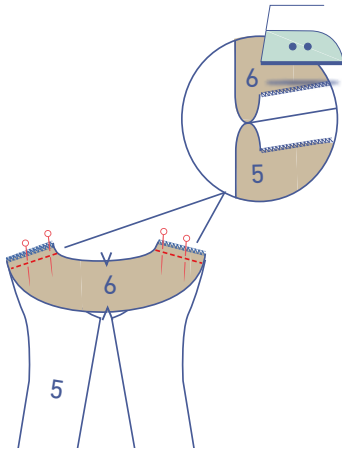


Finish the indicated raw edges together with overlock stitching.

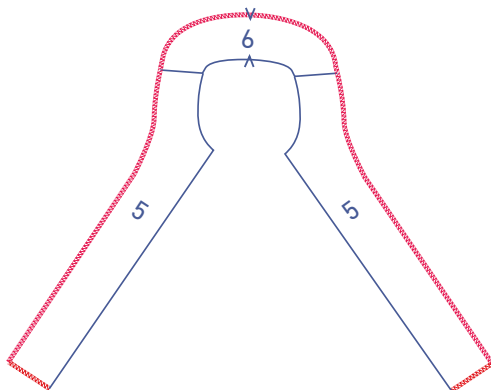


6

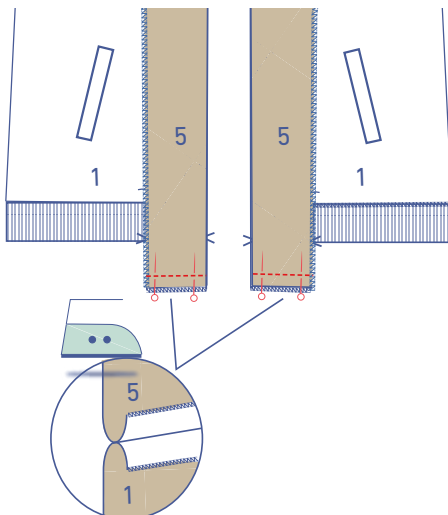
Finish the shoulder seams of the neck facing front (5) and neck facing back (6) with overlock stitching.



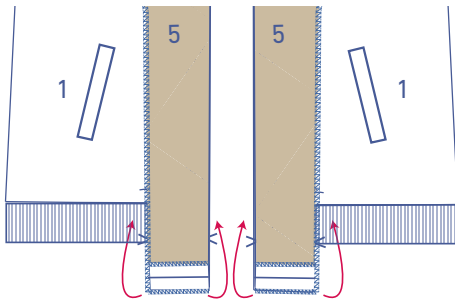
Pin and sew the shoulder seams. Press open the seam allowance.



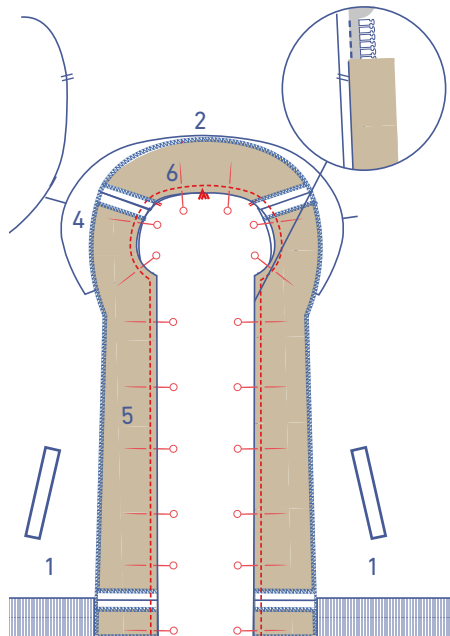
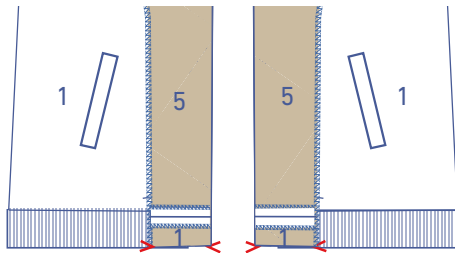
Finish the indicated sides with overlock stitching.



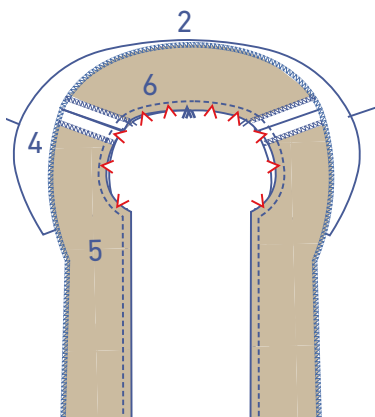
Pin and sew the bottom of the neck facing front (the short ends) to the bottom of the shaped facing of the front. Press open the seam allowance.



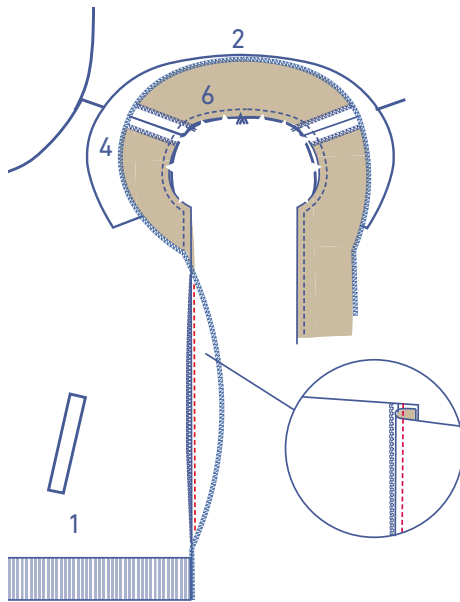
Fold the shaped facing of the front to the V notch with the right side of the fabric facing inwards.



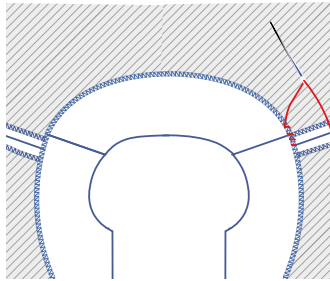
Neatly line up the raw edges of the facing front + back with the CF and the neckline. Pin and sew in place.



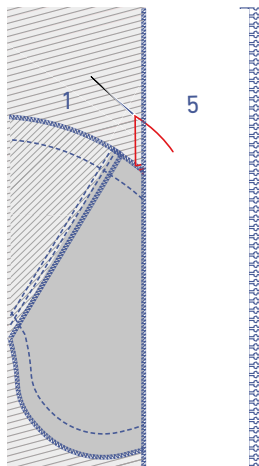
Snip notches out of the neckline's seam allowance to create a nice smooth neckline.



Fold the seam allowance towards the facing. Understitch the under collar at 2 mm from the seam through all layers (under collar + seam allowance). Next, neatly press the seams together.



Hand sew the seam allowances of the jacket's shoulder seams to the facing.



Hand sew the seam allowances of the pocket seams to the facing.

pattern pieces & seam allowances (in cm)

To sew the garment together as described in the instructions, you must draw the illustrated seam allowances around the paper pattern pieces before cutting them out.

1. front: 2x
2. back: 1x on fabric fold
3. sleeve: 2x
4. collar: 2x on fabric fold
5. neckline facing front: 2x
6. neckline facing back: 1x on fabric fold
7. outer pocket bag: 2x
8. pocket welt with inner pocket bag: 2x
9. pocket: 4x (lining)
10. wrist trim: 2x (cuff fabric)
11. hem band: 1x on fabric fold (cuff fabric)

IMPORTANT

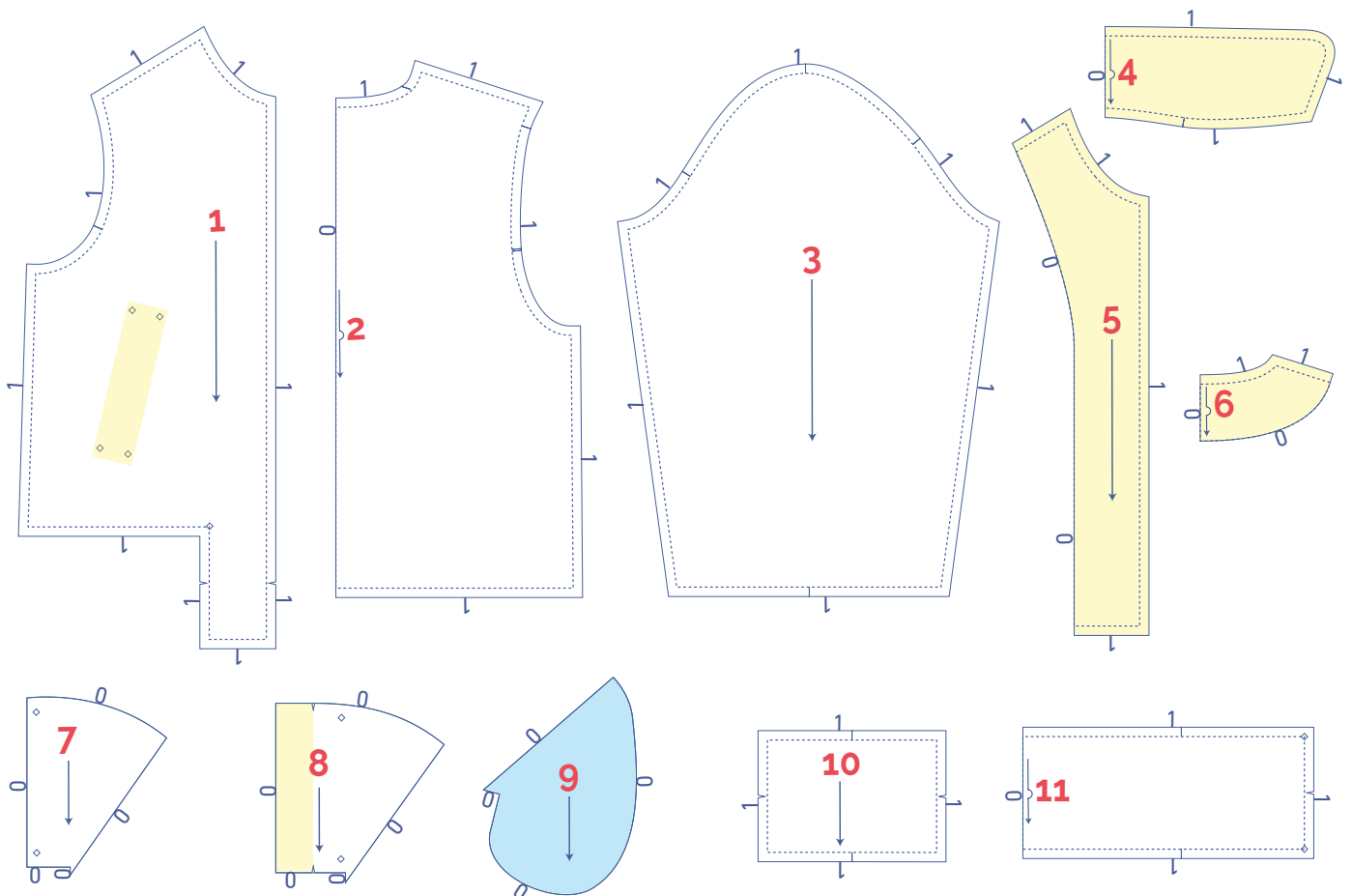
The pieces highlighted in light yellow are attached along the wrong side using iron-on interfacing.



lining



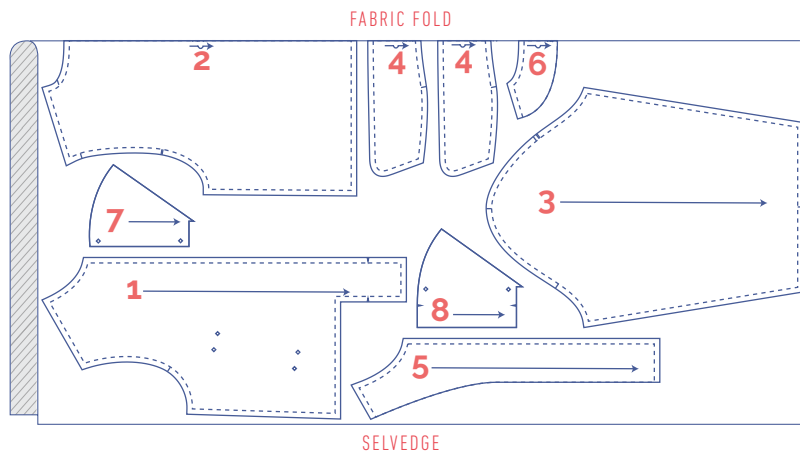
iron-on interfacing



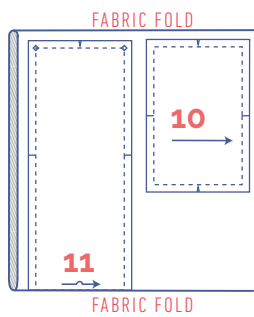
fabric plan

XS - M

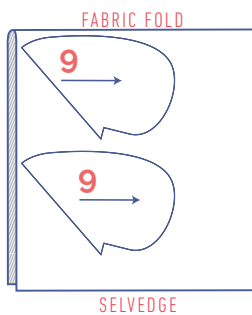
for fabrics 140 cm wide



for knit 35 cm in the round for ribbing

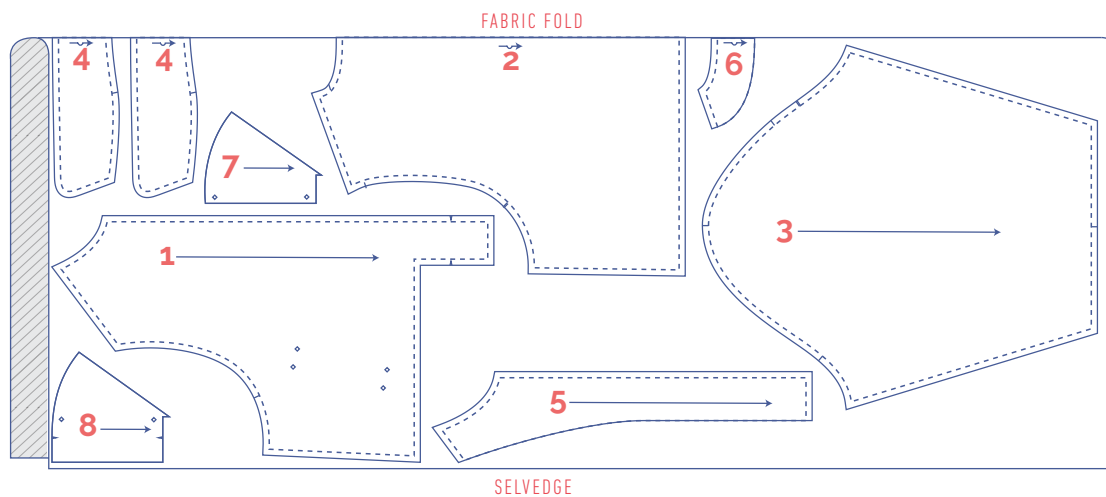


for lining

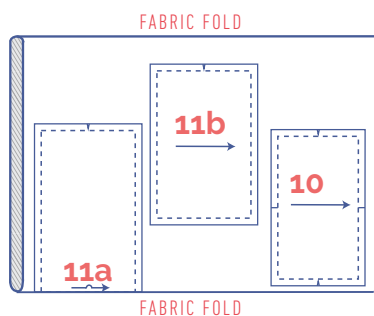


L - XXXL

for fabrics 140 cm wide



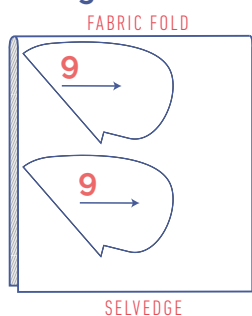
for knit 35 cm in the round for ribbing



ATTENTION!

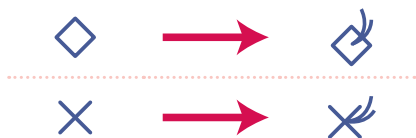
Cut pattern piece 11 in 2 and include seam allowance.

for lining



marking pattern pieces after cutting

- Mark the following points using basting thread:



- Nick the pattern paper and fabric at the places where a single vertical line (I) and double vertical lines (II) are indicated.
- Cut a small corner out of the fabric at a V notch symbol or on the finished hemline.
- Cut a small corner (V notch) out of the pieces that lie on the fabric fold (—) to mark the middle of these pieces.