

# Becky by Fibre ⚡ood

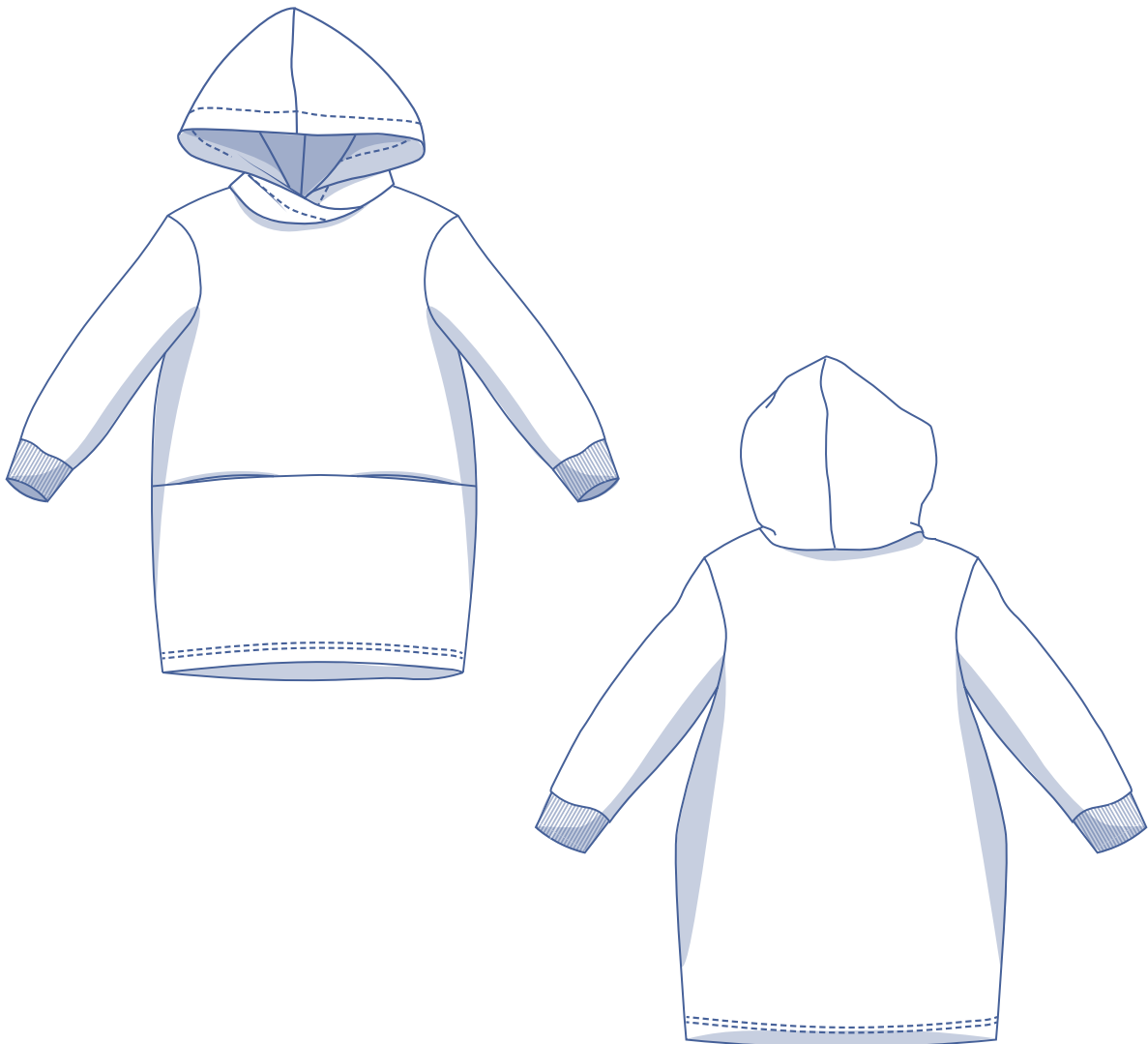


# Becky by Fibre Mood



**2 - 14 years**

Why choose between a dress and a hoodie when you can have both? Here's another plus of the Becky... it has handy pockets hidden in the decorative seams! This super soft and cosy jumper-dress is just what you need in the winter and on those chilly Spring days. So, hood up and off you go!



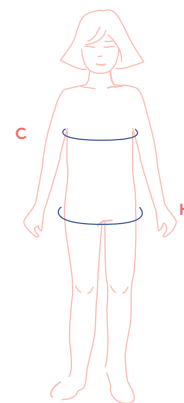
## size chart (in inches)

size (age)	2	3	4	5	6	8	10	12	14
C	20.5	21.3	22	22.8	23.6	25.2	26.8	28.3	29.9
H	22	22.8	23.6	24.4	25.2	26.8	28.3	29.9	31.5

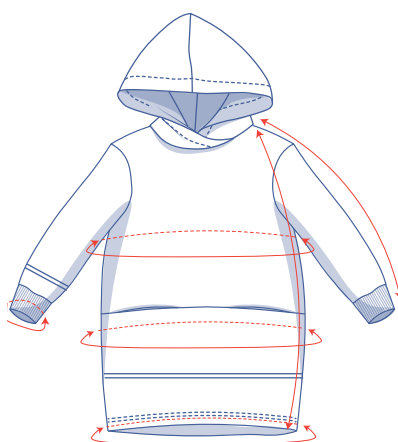
**Chest (C):** measure horizontally around the widest part of the chest.

**Hip (H):** measure horizontally around the widest part of the lower body.

For this pattern, you should choose the size based on your bust measurement. To pick the size, go for the chest size closest to the actual measurements. Altering the hips is easy. Simply trace the line of the one size instead of the other.



## finished garment measurements (in inches)



This measurements in the table below are the pattern measurements based on the fabric type and serve as a reference. For a more comfortable fit and to achieve a particular cut (fitted, loose or oversized), ease has been added to the width measurements (in addition to the exact body measurements). The Becky is a loose cut dress, without really being oversized. Depending on the preferred cut, you could possibly go a size smaller or larger than the size chosen.

size	2	3	4	5	6	8	10	12	14
length	18.3	19.9	21.5	23.2	24.8	28.1	31.3	34.6	37.8
sleeve length*	15.3	16.4	17.6	18.2	19.5	21.6	23.4	25.9	28
chest	26.4	27.2	28	28.8	29.6	31.2	32.7	34.3	35.9
hips	29.4	30.3	31.1	31.9	32.7	34.4	36.1	37.7	39.4
hem circumference	27.1	27.9	28.7	29.5	30.3	31.8	33.4	35	36.6
wrist circumference	5.6	5.7	5.8	6	6.1	6.3	6.5	6.8	7.1

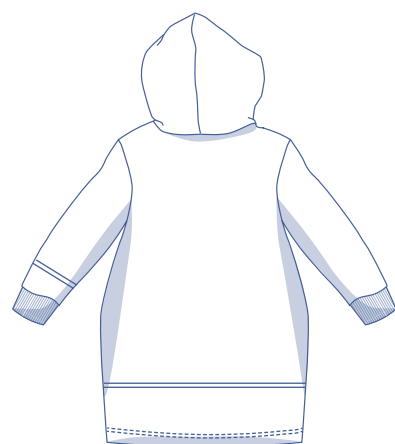
\* Including the shoulder length and wrist trim.

Compare the stated lengths to the measured or desired lengths. **Lengthen** or **shorten** the dress and/or the sleeves by cutting the pattern pieces at the indicated double lines and then spreading the pattern pieces out X inches from each other or overlapping them where needed. Make sure that the CF and CB lines and the side seams are always straight.



### IMPORTANT

Adjust the amount of fabric to be used based on the alterations.



you can lengthen  
or shorten the pattern here

## supplies



- Thread
- Trim fabric: see table
- Fabric: see table

trim fabric (in yards)	2	3	4	5	6	8	10	12	14
14" wide	1/5	1/5	1/5	1/5	1/5	1/5	1/5	1/5	1/5

fabric used (in yards) standard	2	3	4	5	6	8	10	12	14
fabric width 43"	1 ½	1 ½	1 ¾	2	2	2 ¾	2 ¾	3	3
fabric width 55"	1 ½	1 ½	1 ½	1 ½	1 ¾	1 ¾	2	2	2 ¼

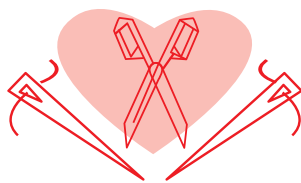
The corresponding fabric layout can be found on the last page of these sewing instructions.

## fabric advice



Sweatshirt material, French terry, neoprene and Ponte Roma are all great options for the Becky dress. Sweatshirt material will give the dress a little more volume and give it an on-trend look.

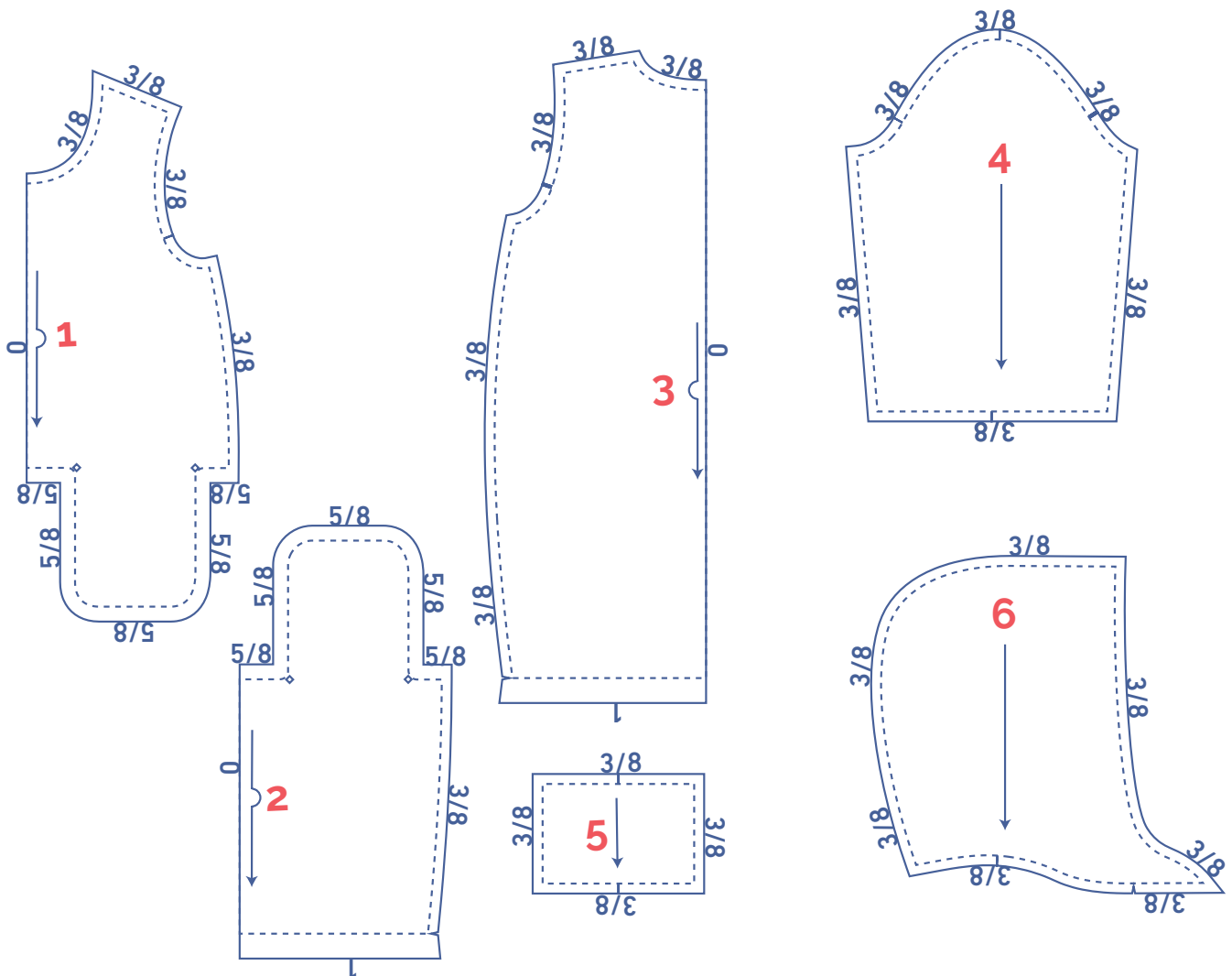
# Proud to be #Sewista



## pattern pieces & seam allowances (in inches)

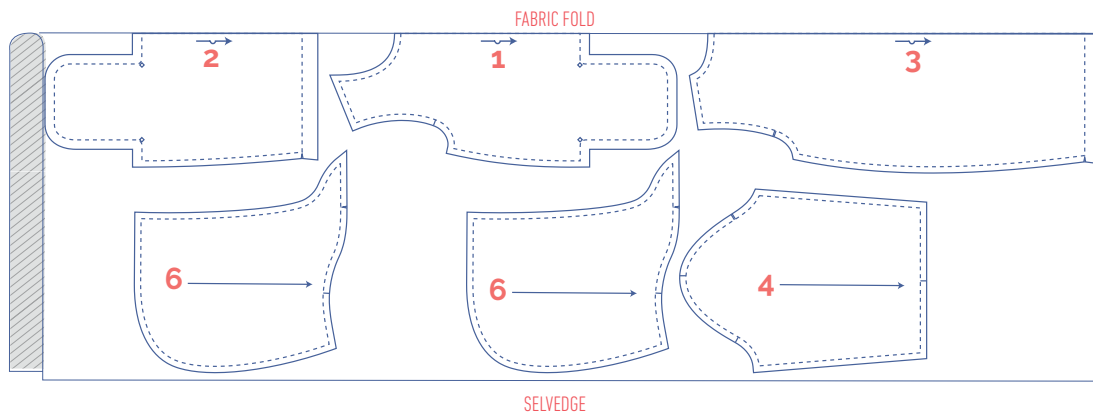
To sew the garment as described in the instructions, you must draw the illustrated seam allowances around the paper pattern pieces before cutting them out.

1. front: 1x on fabric fold
2. front bottom piece: 1x on fabric fold
3. back: 1x on fabric fold
4. sleeve: 2x
5. wrist trim: 2x (in trim fabric)
6. hood: 4x

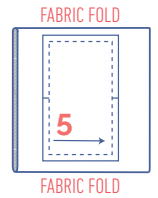


## fabric layout for fabrics 43" wide

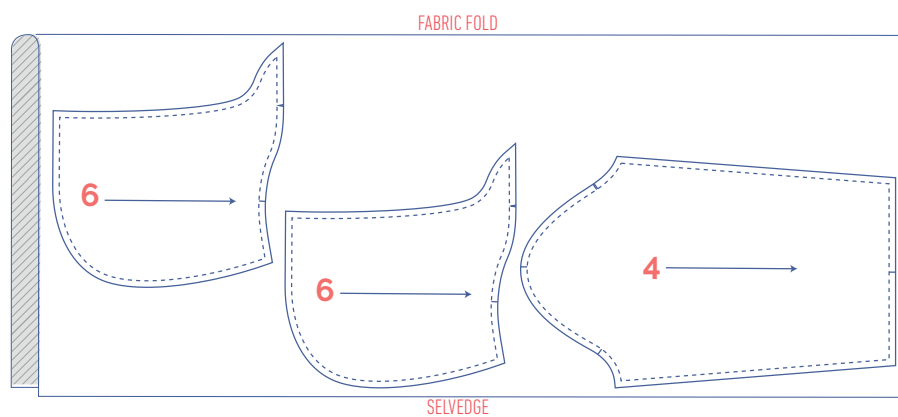
2 - 6 years



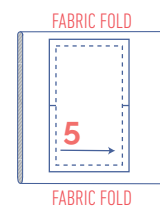
cuff fabric



8 - 14 years

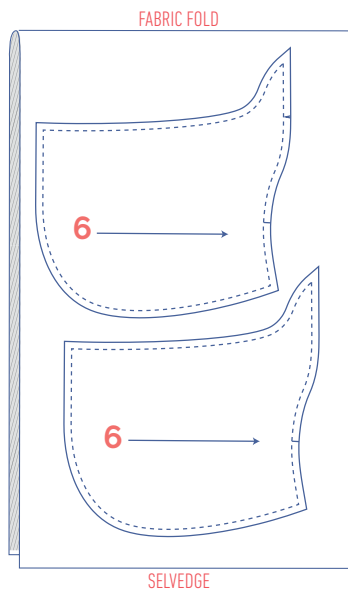
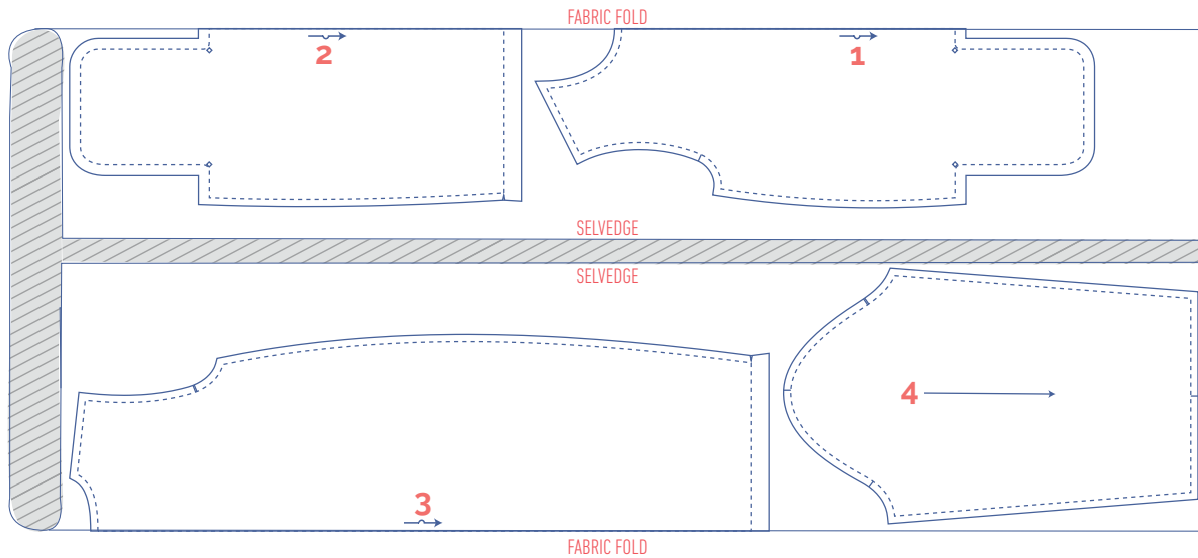


cuff fabric

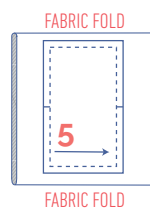


## fabric layout for fabrics 55" wide

2 - 14 years



### cuff fabric



- Mark the next points with basting thread:



- Nick the pattern paper and fabric at the places where a single vertical line (I) and double vertical lines (II) are indicated.
- Cut a small notch out of the fabric at a V notch symbol or on the finished hemline.
- Cut a small notch (V notch) out of the pieces that lie on the fabric fold (—) to mark the middle of these pieces.

# sewing instructions



The method used to finish the garment will depend on your chosen fabric.

The pieces are always sewn together with right sides facing, unless stated otherwise.

F front


B back

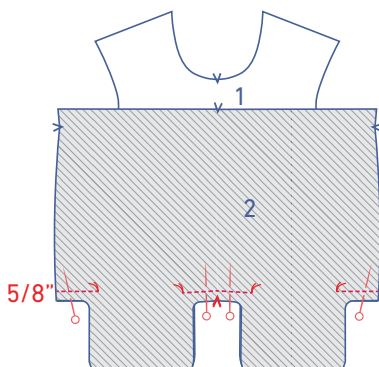
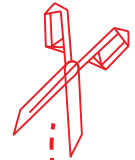
CF centre front

CB centre back

 right side

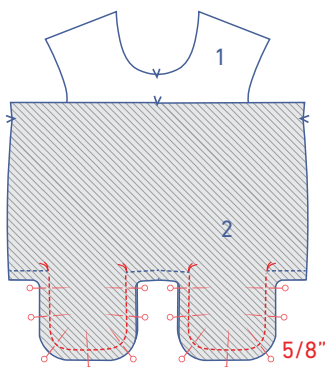
 wrong side

 trim fabric



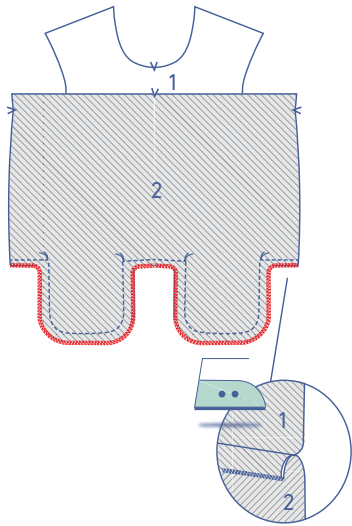
**1**

Pin the front (1) to the front bottom piece (2). Sew into place at 5/8" from the raw edge starting and ending at the marking threads.

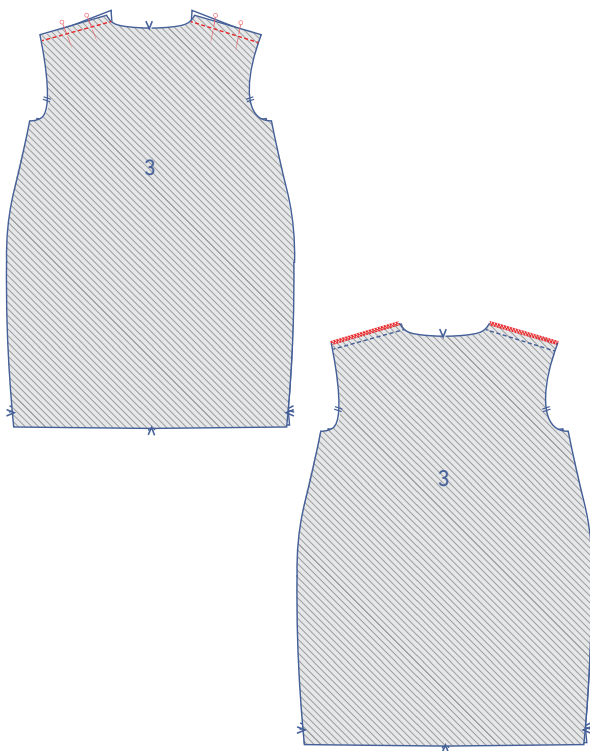


Pin the contours of the pocket pieces together. Sew into place at 5/8" from the raw edge, starting precisely from the marking threads.





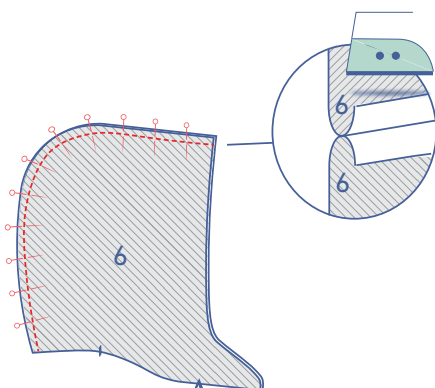
Finish the raw edges together with overlock stitching and press the seam allowance towards the front bottom piece.



## 2

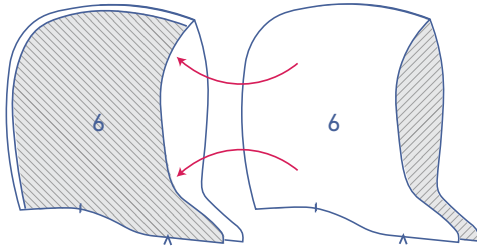
Pin and sew the shoulder seams.

Finish the raw edges together with overlock stitching and press the seam allowance towards the front.

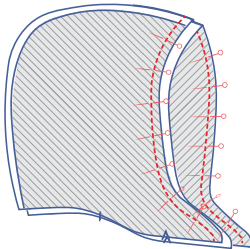


## 3

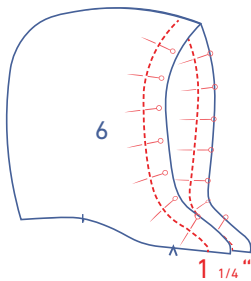
Pin and sew the curved edge (= CB seam) of each of the 2 hood pieces (6) together. Press open the seam allowance.



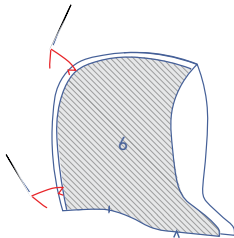
Slide both hood pieces with the right sides of the fabric facing together.



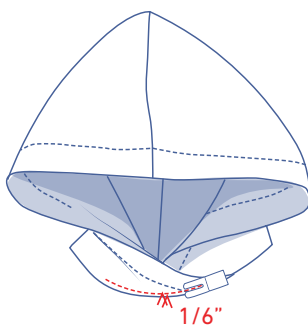
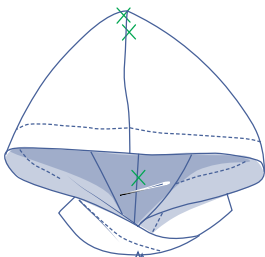
Pin and sew the indicated edge of both hood pieces together.



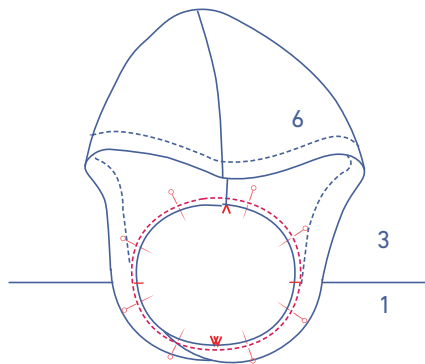
Turn the right way out and topstitch together 1 1/4" away from the finished edge.



Stitch or hand sew the seam allowances of both hood pieces together along the inside of the hood (wrong side) with just a few stitches, working through the opening at the bottom.

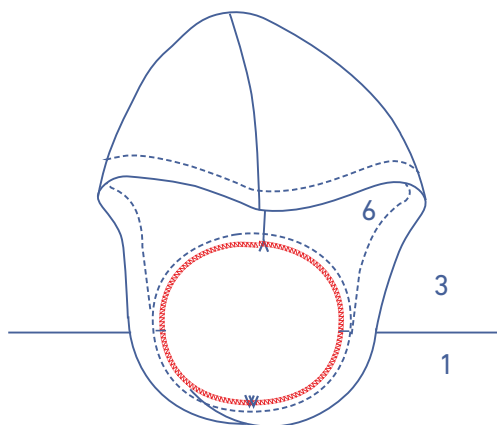


Pin the right hood piece on top of the left piece with the V notches indicating the CF aligned and matching. Sew into place at 1/6" from the edge.

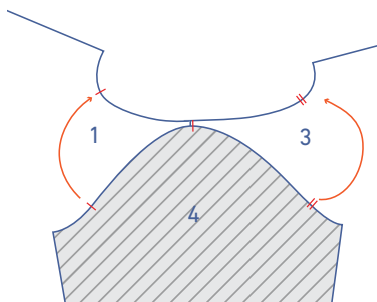


## 4

Pin and sew the hood to the neckline using a ballpoint needle and with the corresponding notches matching. The hood's seam should line up with the V notch indicating the CB.

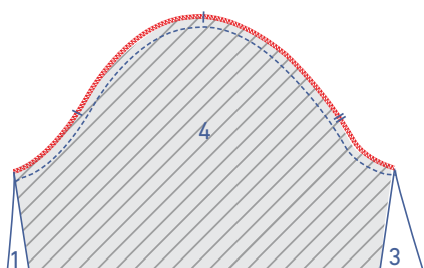
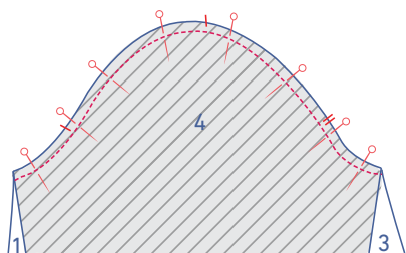


Finish the raw edges together with overlock stitching.

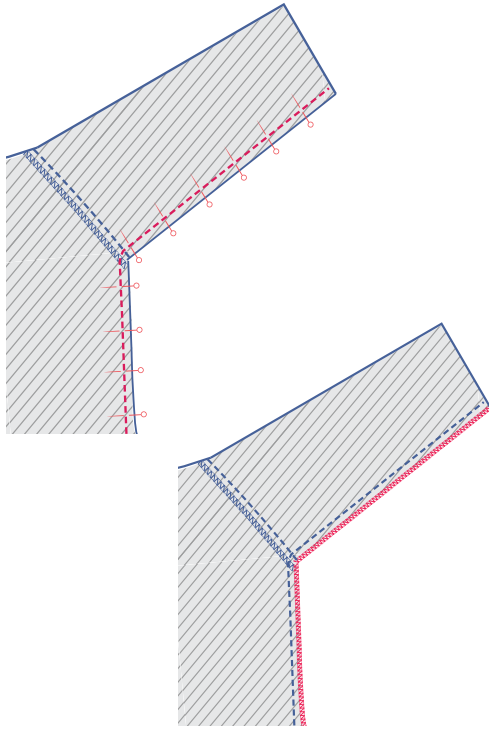


## 5

Pin and sew the top of the sleeve (4) (= the sleeve cap) to the armhole with the corresponding markings matching. The single notch marks the front, while the double notches mark the back. The top notch should line up with the shoulder seam.

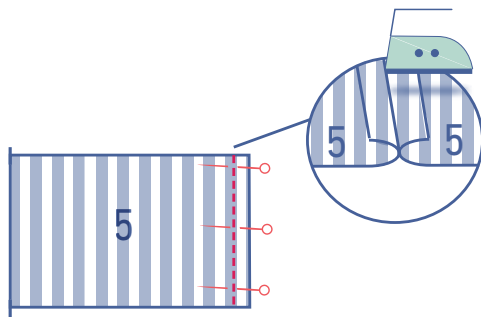


Finish the raw edges together with overlock stitching.



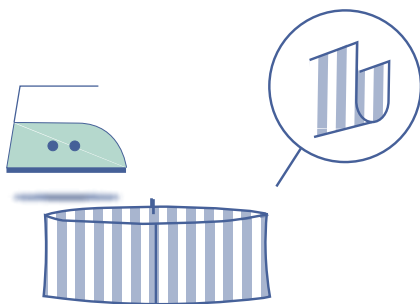
Pin and sew the side and underarm seams.

Finish the raw edges together with overlock stitching.

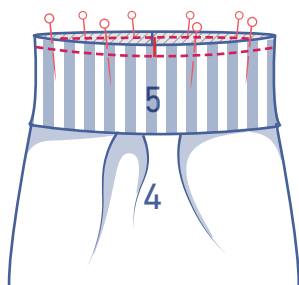


**6**

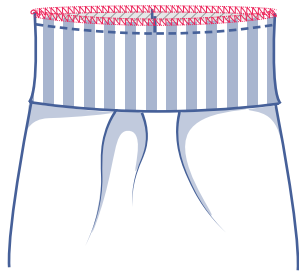
Sew the short ends of the wrist trims (5) and press the seam allowance open.



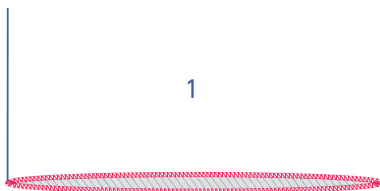
Press the wrist trim in half lengthwise with the right side facing outwards.



Pin and sew both raw edges of the cuff ribbing to the bottom of the sleeve. Make sure that the seams and notches continue to match. The circumference of the wrist trim is smaller than the sleeve hem, so stretch the cuff ribbing gently as you sew.

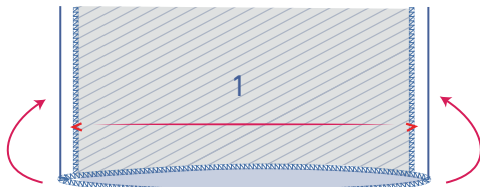


Finish the raw edges together with overlock stitching.

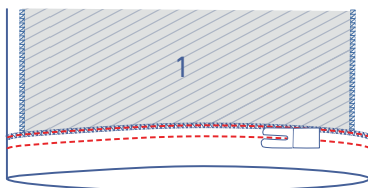


**7**

Finish the hem with overlock stitching.



Press the seam hem over at the V notches.



Stitch the hem allowance into place with two rows of topstitching using a ballpoint needle.