

Molly by Fibre ⚡ood

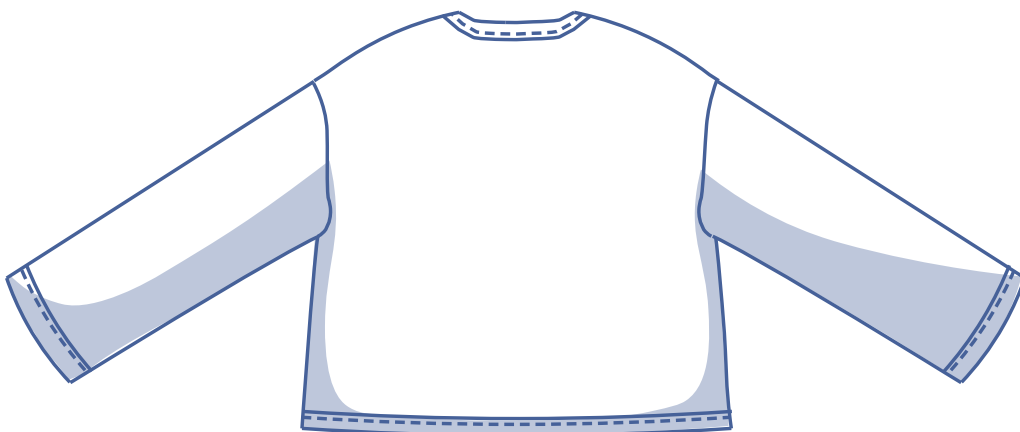


Molly by Fibre ⚡ood



XS - XXXL

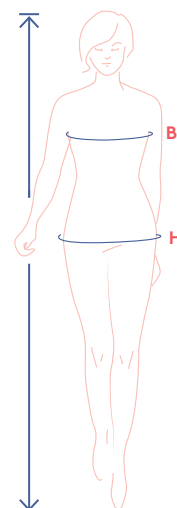
A reversible coat like the Molly, made in a quilted or padded fabric, is an item your wardrobe simply can't do without. Molly can be closed with practical snaps, has patch pockets, and the seams have a bias tape finish. Would you rather make this loose-cut 2-in-1 garment a simple single layer coat? Go for it!



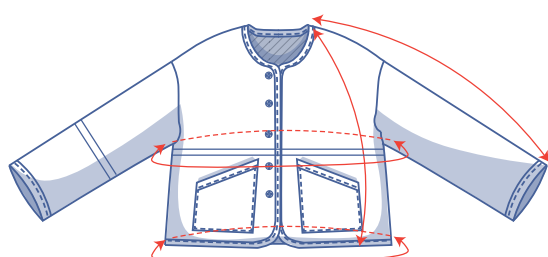
size chart (in cm)

| size | XS | | S | | M | | L | | XL | | XXL | | XXXL | | |
|-------------|-----|-----|-----|-----|-----|-----|-----|-----|-----|-----|-----|-----|------|-----|-----|
| | 4 | 6 | 8 | 10 | 12 | 14 | 16 | 18 | 20 | 22 | 24 | 26 | 28 | 30 | 32 |
| body height | 160 | 164 | 166 | 167 | 168 | 169 | 170 | 171 | 172 | 172 | 172 | 172 | 172 | 172 | 172 |
| B (bust) | 76 | 80 | 84 | 88 | 92 | 96 | 100 | 104 | 110 | 116 | 122 | 128 | 134 | 140 | 146 |
| H (hips) | 86 | 90 | 94 | 97 | 100 | 103 | 106 | 109 | 115 | 120 | 125 | 130 | 135 | 140 | 145 |

Choose your size based on your **bust measurement**. If your hip measurements are wider than those in the size chart, check the hem circumference in the chart below to see if there's enough room or whether the pattern needs to be altered. It's easy to do. Simply trace the line of the one size instead of the other.



pattern measurements (in cm)

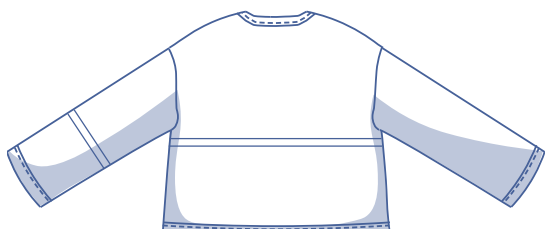


This chart's measurements are the pattern measurements based on the fabric type and serve as a reference. Ease has been added to the width measurements (in addition to the exact body measurements) for a more comfortable fit. Molly is designed to have an **oversized cut**. Depending on the preferred cut, you could decide to go a size smaller or larger than the recommended size.

— shorten or lengthen the pattern here

| size | XS | S | M | L | XL | XXL | XXXL |
|-------------------|--------|--------|--------|--------|--------|--------|--------|
| length | 63.75 | 64.5 | 65.25 | 66 | 67.5 | 68.75 | 70 |
| sleeve length* | 72 | 73.75 | 75.25 | 76.75 | 78.25 | 80 | 81.5 |
| bust | 106 | 114 | 122 | 130 | 140 | 152 | 164 |
| hem circumference | 109.25 | 117.25 | 125.25 | 133.25 | 143.25 | 155.25 | 167.25 |

* Including shoulder length.



Compare the stated lengths to the measured or desired lengths. **Lengthen** or **shorten** the coat and/or sleeves by cutting the pattern pieces at the indicated double lines. Then either increase the distance between the cut pieces by the desired amount (to lengthen), or overlap the pieces (to shorten). Make sure that the CF and CB lines and the side seams are always straight.

IMPORTANT

Adjust the fabric to be used based on these alterations.



notions



- Thread
- Snaps (Ø 1.5 cm): 5 (XS - L), 6 (XL - XXXL)
- Bias tape (width 1.8 cm): see table
- Fabric 1 = fabric for the outside: see table
- Fabric 2 = fabric for the inside: see table

| bias tape | | XS | S | M | L | XL | XXL | XXXL |
|------------------|-----------|------------|--------------|--------------|--------------|--------------|--------------|--------------|
| neck and hemline | cm | 265 | 274.5 | 284.5 | 294.5 | 309.5 | 324.5 | 339.5 |
| pocket (2x) | cm | 19.5 | 20 | 20.5 | 21 | 21.5 | 22 | 22 |
| sleeve hem (2x) | cm | 32 | 33 | 34 | 35 | 36 | 37 | 38 |
| total cm | cm | 368 | 380.5 | 393.5 | 406.5 | 424.5 | 442.5 | 459.5 |

| fabric | | XS | S | M | L | XL | XXL | XXXL |
|--|----|-----|-----|-----|-----|-----|-----|------|
| fabric width 110 cm (for fabric 1 and fabric 2)* | cm | 190 | 190 | 195 | 195 | 205 | 210 | 260 |
| fabric width 140 cm (for fabric 1 and fabric 2)* | cm | 125 | 125 | 125 | 185 | 185 | 195 | 200 |

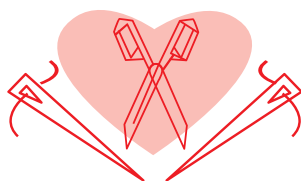
If you are making the reversible coat, you will need the same amount of two fabrics: one for the outside, one for the inside. This table shows the amount required of each fabric. The corresponding fabric layout can be found on page 6. of these sewing instructions.

fabric advice



You can't go wrong with knits or wovens for Molly. Take your pick from cotton twill, wool/wool blends, or a padded/quilted fabric.

Proud to be #Sewista

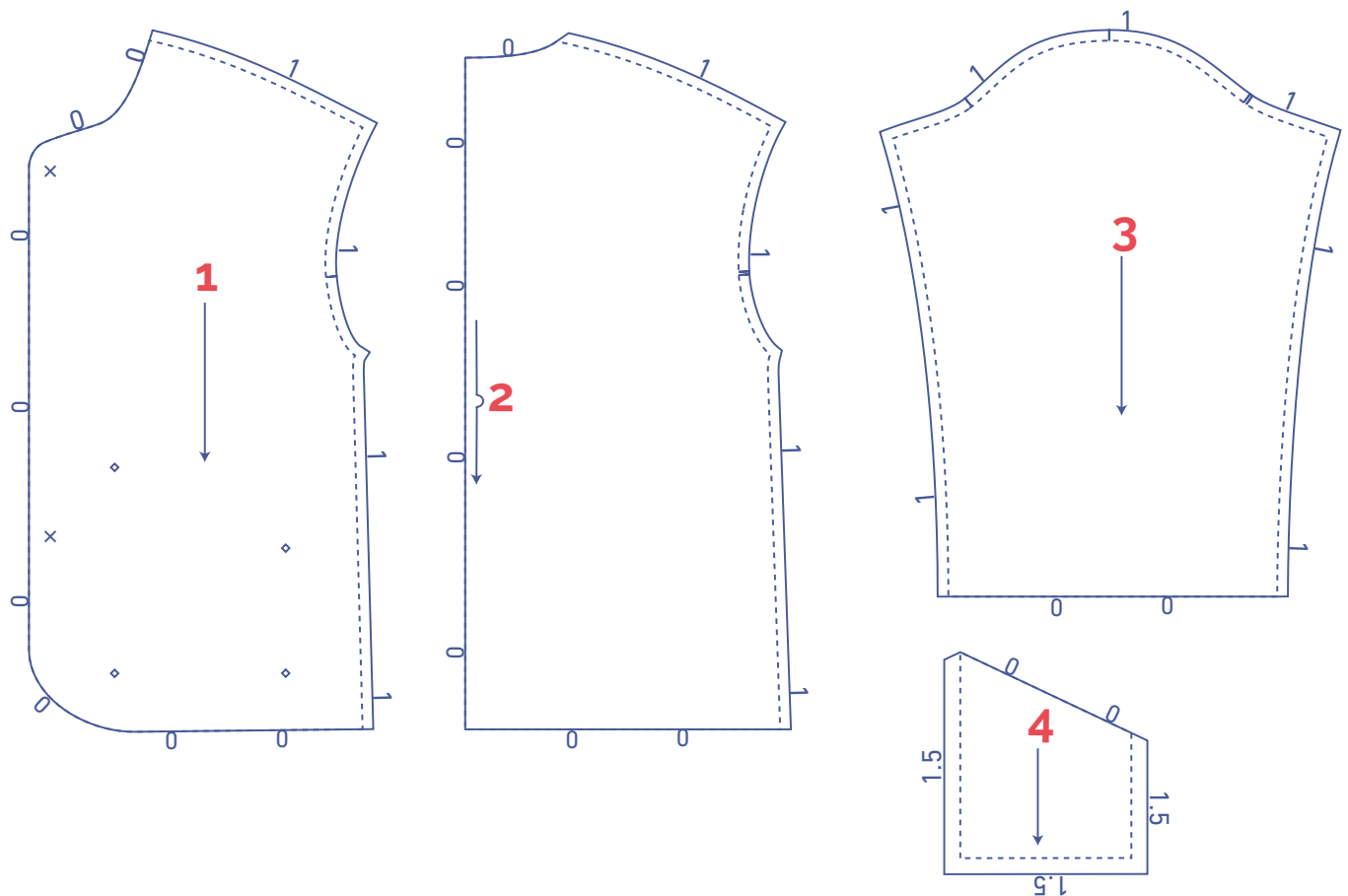


pattern pieces & seam allowances (in cm)

To sew the garment as described in the instructions, draw the illustrated seam allowances around the paper pattern pieces before cutting them out. If you are using a PDF pattern, the pattern can be printed with or without seam allowance.

To find out more, watch the [video](#).

1. front panel: 2x in fabric 1 + 2x in fabric 2
2. back panel: 1x on fabric fold in fabric 1 + 1x on fabric fold in fabric 2
3. sleeve: 2x in fabric 1 + 2x in fabric 2
4. pocket: 2x in fabric 1



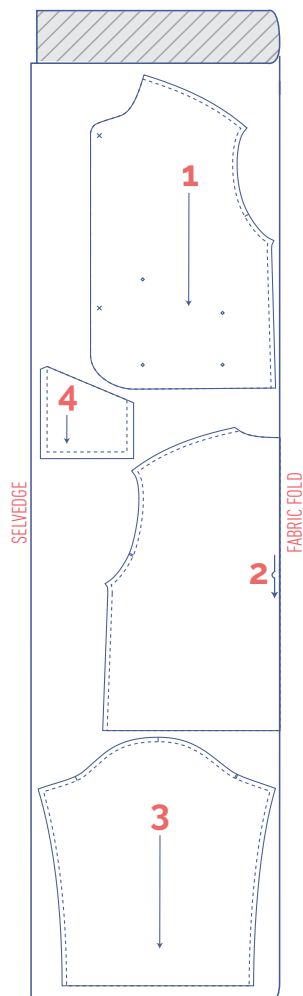
IMPORTANT

The Molly coat is a reversible coat. That means you will make two identical coats, one in fabric 1 and the other in fabric 2. However, the coat in fabric 2 does not include patch pockets (pattern piece 4).

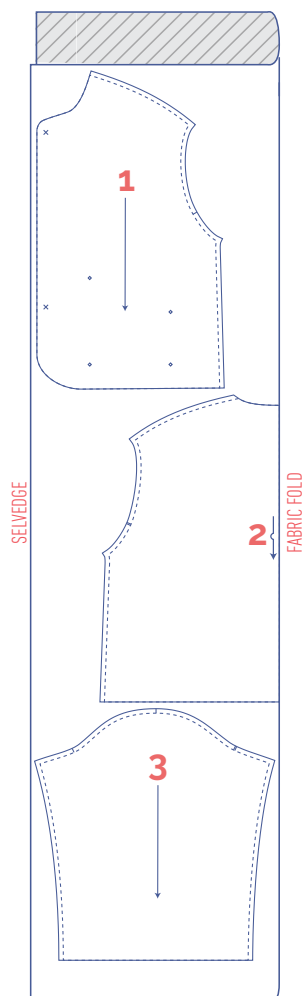
Prefer to make a single-layer version? Finish then the raw edges on the inside with overlock stitching or bias tape.

fabric layout – solid fabrics **fabric width 110 cm**

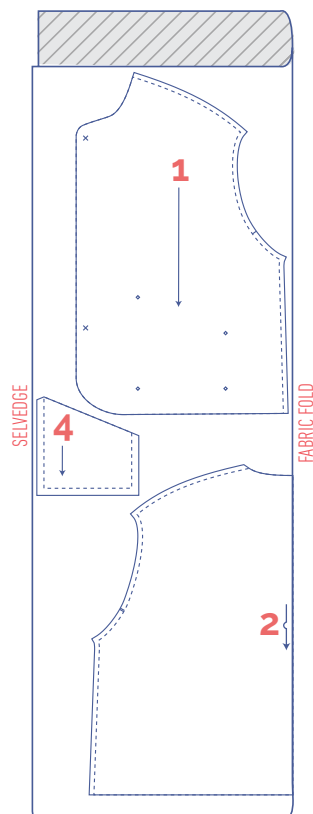
fabric 1
XS - XXL



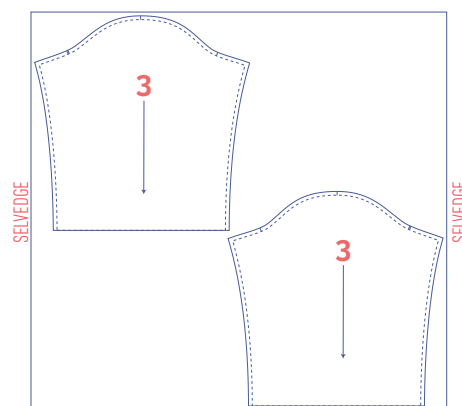
fabric 2
XS - XXL



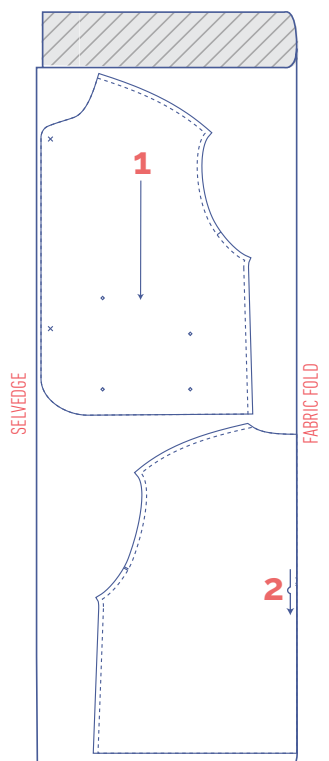
fabric 1
XXXL



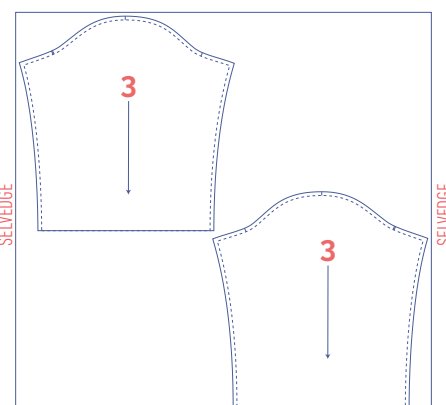
+



fabric 2
XXXL



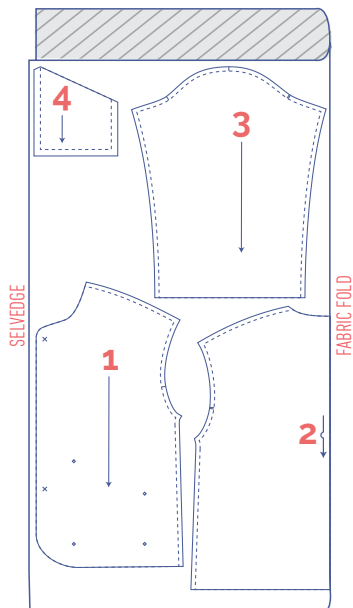
+



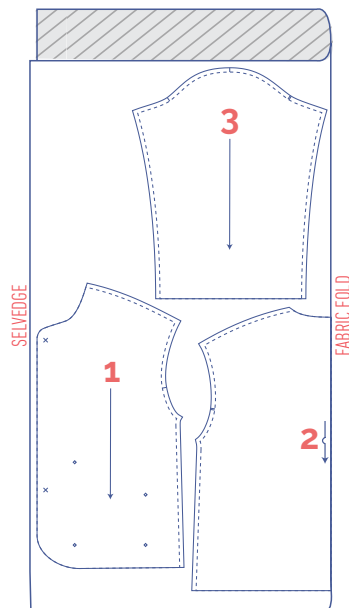
fabric layout – solid fabrics

fabric width 140 cm

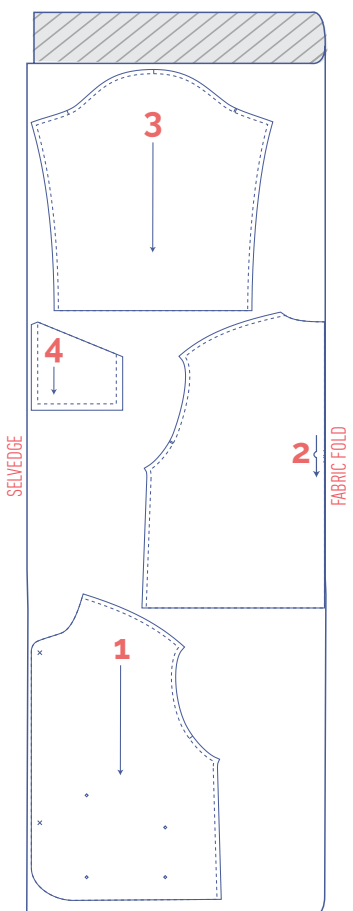
fabric 1
XS - M



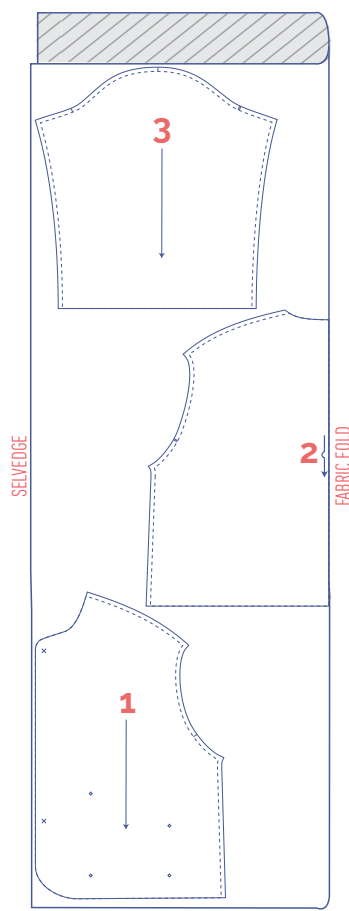
fabric 2
XS - M



fabric 1
L - XXXL



fabric 2
L - XXXL



marking pattern pieces



Notch the pattern paper and fabric at the following points:

| single notch

|| double notch

V V notch



Mark the following points using marking thread.



centre point



snap/button

sewing instructions



The method used to finish the seams depends on the fabric used.
The pieces are always sewn together with the right sides of the fabric facing, unless stated otherwise.

F front

B back

CF centre front

CB centre back

 right side

 wrong side

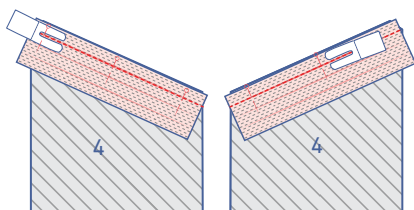
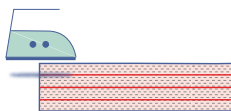
 bias tape

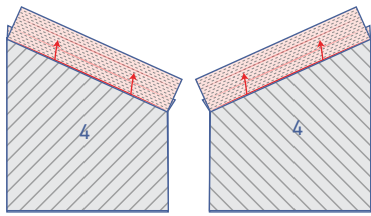
1

Start by making the coat for the outside. Finish the top of the pocket with bias tape as follows:

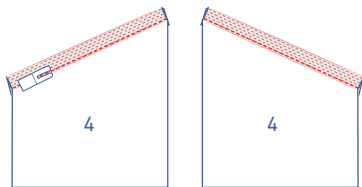
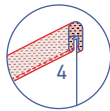
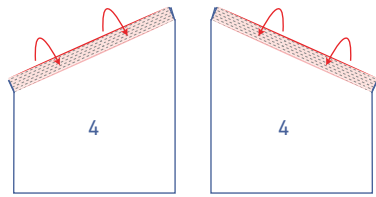
Open the bias tape out and pin the raw edge to the top of the pocket along the wrong side.

Sew together along the first fold line.

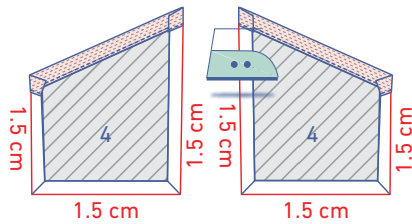




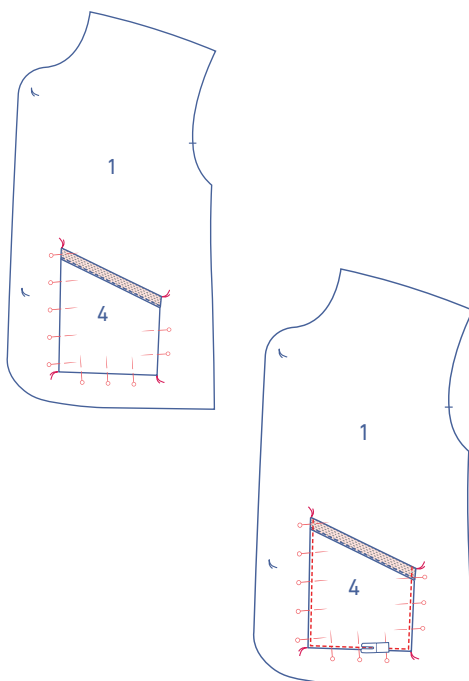
Fold the bias tape over towards the right side of the pocket along the centre line.



Tuck under the raw edge of the bias tape. Edgestitch the bias tape into place.

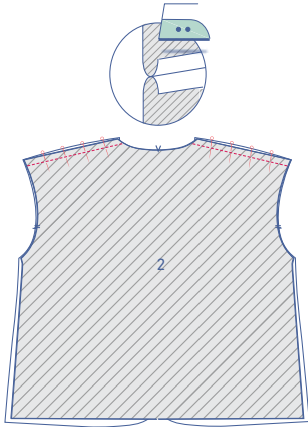


Press the 3 remaining ends of the pockets onto the wrong side.



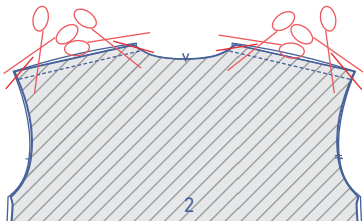
Pin the pocket to the front panels (1) as indicated by the marking threads.

Edgestitch into place.

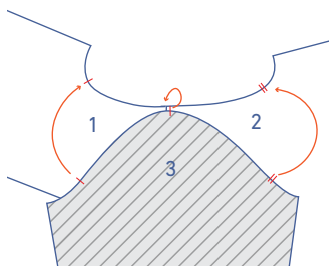
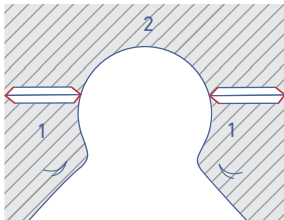


2

Pin and sew the shoulder seams of the fronts (1) and back (2). Press the seam allowance open.

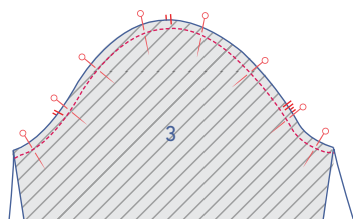


Trim the seam allowance at the tips at an angle to reduce bulk.

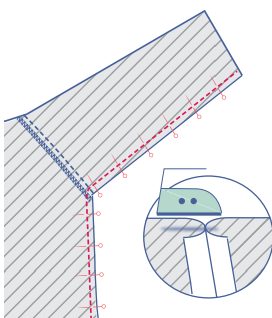


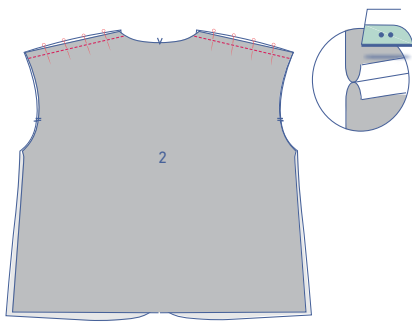
3

Pin and sew the top of the sleeve (3)(= the sleeve cap) to the armhole, matching the markings. The single notch marks the front, while the double notch marks the back. The top notch aligns with the shoulder seam (shoulder point).



Fold the sleeve in half with the right sides of the fabric facing and stitch the side and underarm seams together. Press the seam allowance open.

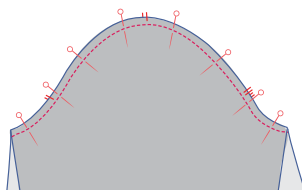
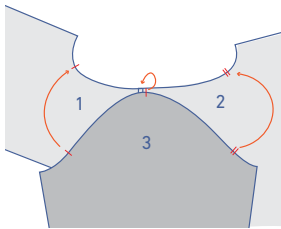




4

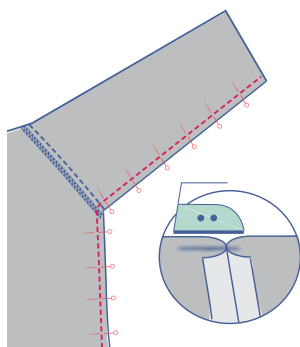
Now, make the coat for the inside the same way. Just leave off the pockets.

Pin and sew the shoulder seams together. Press the seam allowance open.

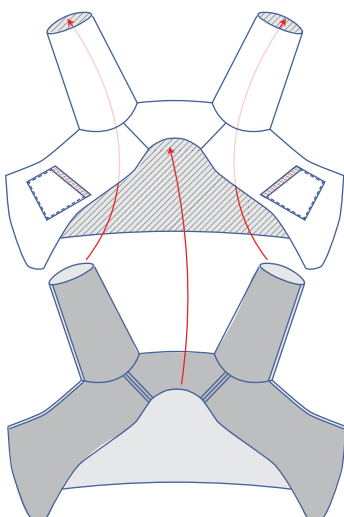


5

Pin and sew the top of the sleeve (= the sleeve cap) to the armhole, matching the markings. The single notch marks the front, while the double notch marks the back. The top notch should line up with the shoulder seam (shoulder point).

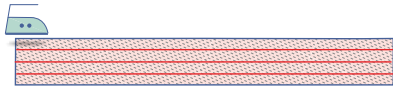


Fold the sleeve in half with the right sides of the fabric facing and stitch the side and underarm seams together. Press the seam allowance open.



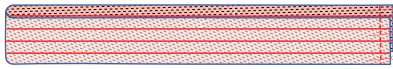
6

Slide the inside coat into the outer coat with the wrong sides touching.

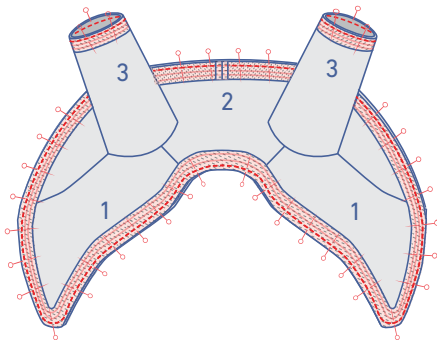
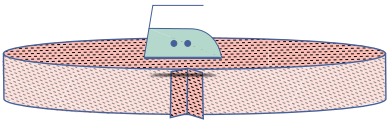


Use bias tape to join the neck and hemlines as follows.

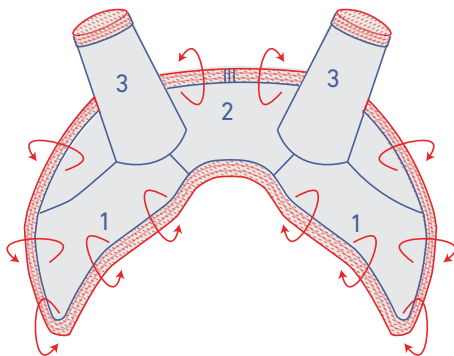
Press the bias tape open.



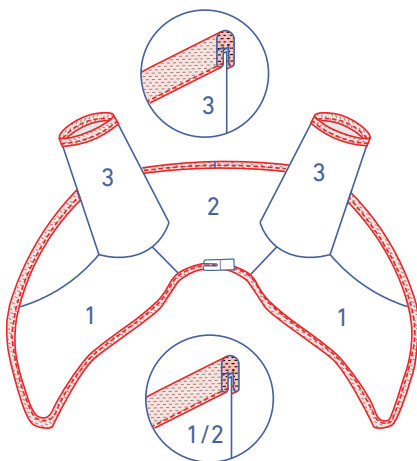
Pin and sew the short ends (right sides together) and press the seam open.



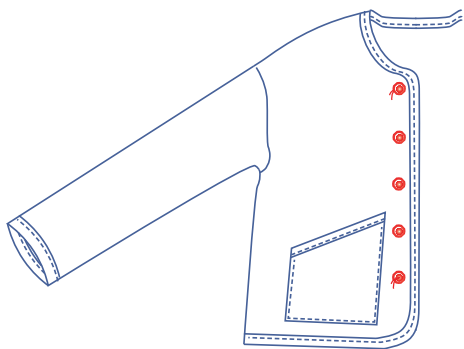
Pin the raw edge of the bias tape along the inside of the coat. Sew together along the first fold line, catching all 3 layers (= bias tape + inner coat + outer coat).



Fold the bias tape onto the outer coat along the centre line.



Tuck under the raw edge of the bias. Edgestitch the bias tape into place.



7

Attach the snaps where indicated.

