

Alix by Fibre ⚡ood

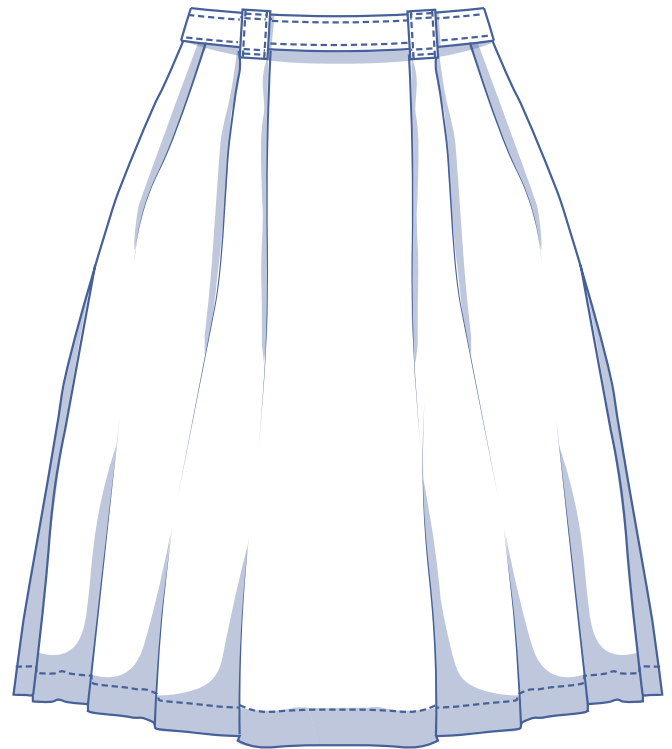
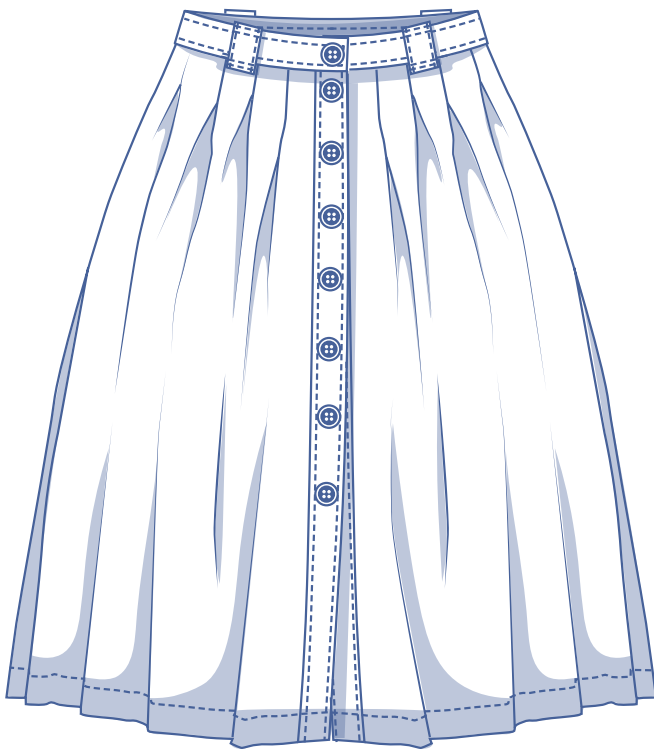


Alix by Fibre ƛood



4 - 30

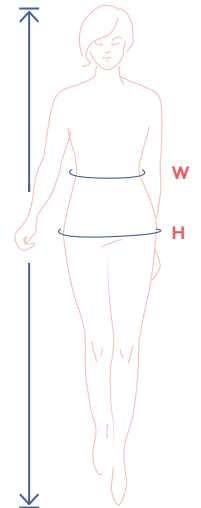
Comfy button-down skirt Alix has got it all: subtle pleating, a waistband with sturdy belt loops (you choose whether to pair a belt with it or not), convenient hidden side seam pockets, and a wide topstitched hem. We made ours mid-length, but making Alix shorter or longer is a breeze to do.



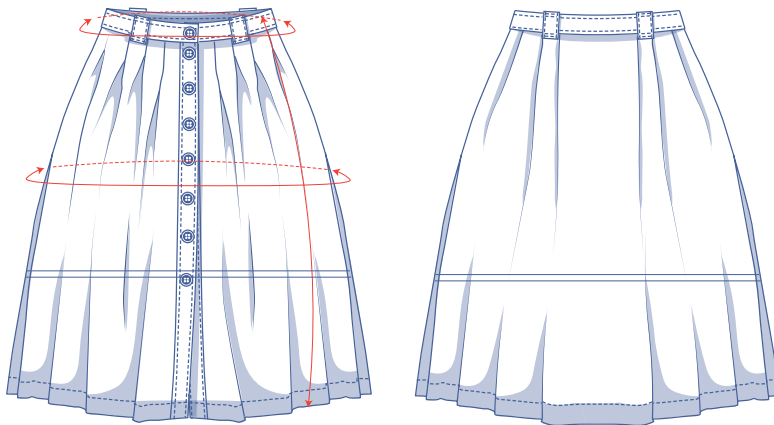
size chart (in cm)

size	EUR	32	34	36	38	40	42	44	46	48	50	52	54	56	58
	UK	4	6	8	10	12	14	16	18	20	22	24	26	28	30
H (height)		160	164	166	167	168	169	170	171	172	172	172	172	172	172
W (waist)		66	68	70	74	78	82	84	88	94.5	101	107.5	114	120.5	127
H (hips)		86	90	94	97	100	103	106	109	115	120	125	130	135	140

To choose your size, start with your **waistline measurement**. Pick the size that fits your waistline measurement best. If your hip measurements are wider than those in the size chart, check the hip measurements in the chart below to see if there's enough room or whether the pattern needs to be altered. It's easy to do. Simply trace the line of the one size instead of the other.



pattern measurements (in cm)



— shorten or lengthen the pattern here

This chart's measurements are the pattern measurements based on the fabric type and serve as a reference. Ease has been added to the width measurements (in addition to the exact body measurements) for a more comfortable fit. Alix is designed to have **a fitted waist and be looser around the hips**.

size	4	6	8	10	12	14	16	18	20	22	24	26	28	30
side length*	83.5	84	84.25	84.5	84.75	85	85.5	85.75	87	87.25	87.5	88	88.25	88.5
waistline measurement	67.5	69.5	71.5	75.5	79.5	83.5	85.5	89.5	96	102.5	109	115.5	122	128.5
hips	166.5	168.5	170.5	174.5	178.5	182.5	184.5	188.5	195	201.5	208	214.5	221	227.5

* Including the waistband.

Compare the stated lengths to the measured or desired lengths. **Lengthen** or **shorten** the skirt by cutting the pattern pieces at the indicated double lines. Then either increase the distance between the cut pieces by the desired amount (to lengthen), or overlap the pieces (to shorten). Make sure that the CF and CB lines and the side seams are always straight.



IMPORTANT

Adjust the amount of fabric to be used based on these alterations.

notions



- Thread
- Iron-on interfacing: max. 50 cm
- Buttons (Ø 1.8 cm): 8
- Fabric: see table

fabric		4	6	8	10	12	14	16	18	20	22	24	26	28	30
fabric width 110 cm	cm	230	230	230	230	230	230	235	255	275	275	275	275	280	280
fabric width 140 cm	cm	190	190	190	190	190	195	195	195	195	200	235	235	235	235

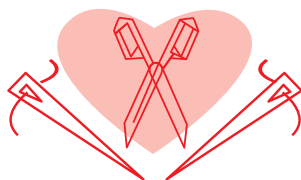
The corresponding fabric layout can be found on page 6 of these sewing instructions.

fabric advice



Alix lends itself well to all kinds of fabrics from poplin, twill, chambray, corduroy, Tencel, crêpe (viscose, polyester, etc.), and satin to... well we could just keep going. We can't wait to see what you pick!

Proud to be #Sewista

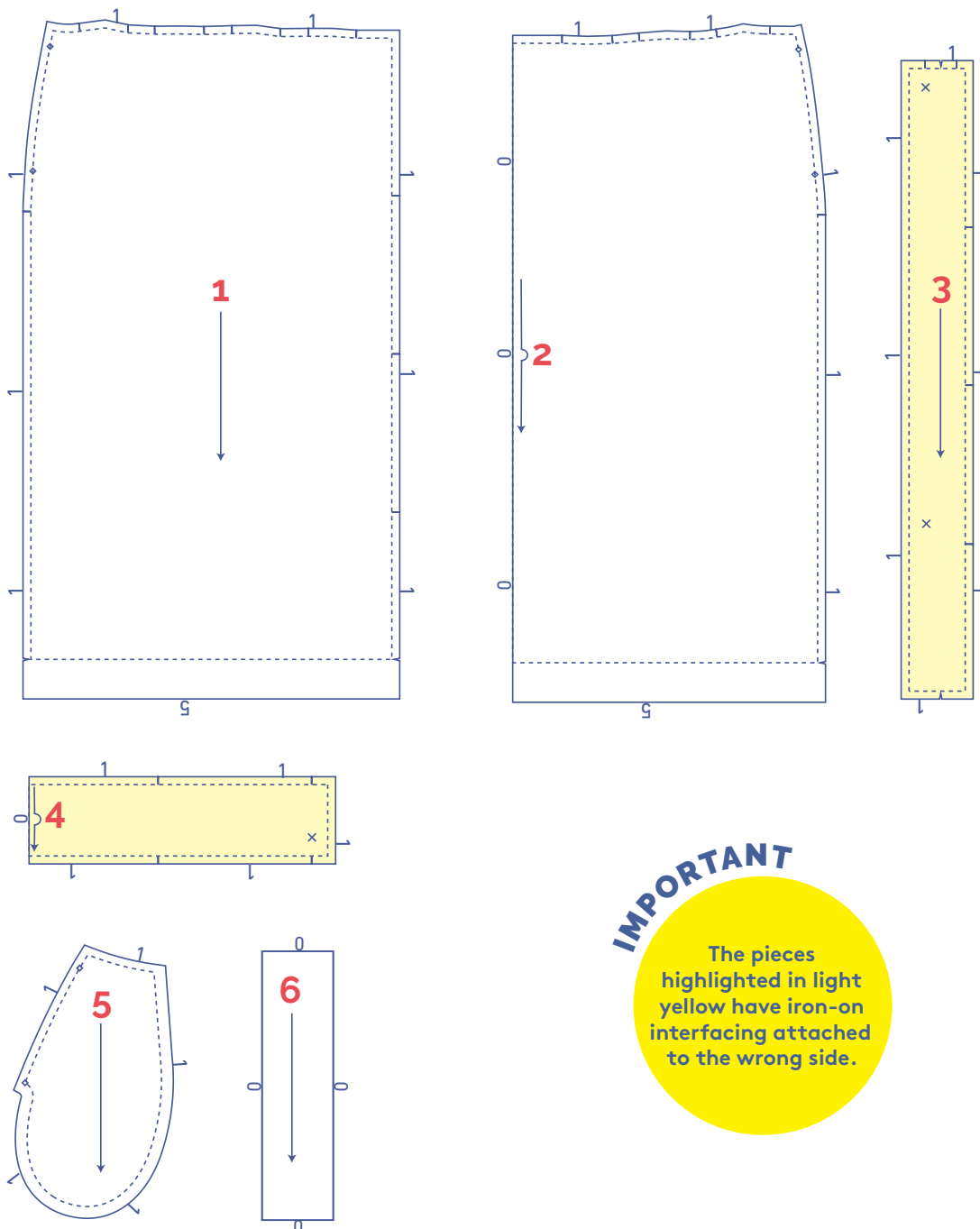


pattern pieces & seam allowances (in cm)

To sew the garment as described in the instructions, draw the illustrated seam allowances around the paper pattern pieces before cutting them out. If you are using a PDF pattern, the pattern can be printed with or without seam allowance.

To find out more, watch the [video](#).

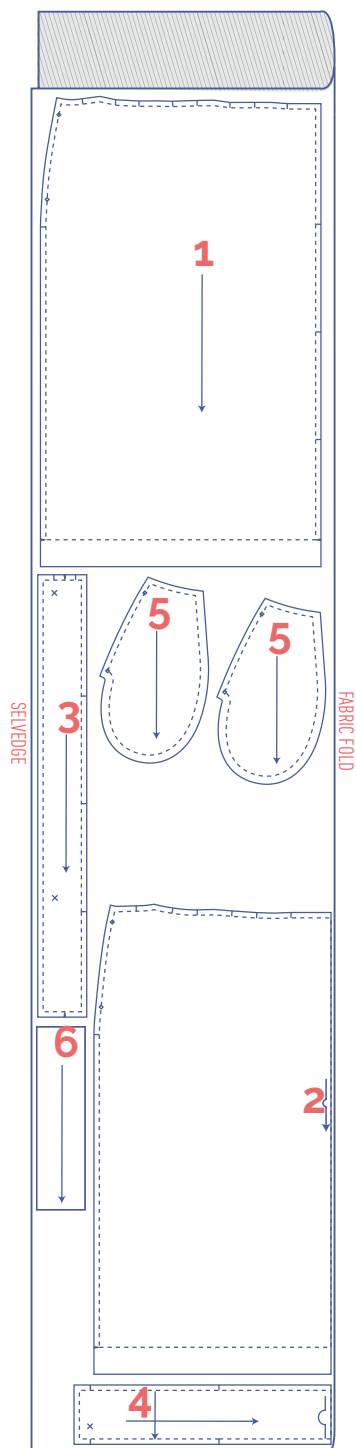
1. front: 2x
2. back: 1x on fabric fold
3. button placket: 2x
4. waistband: 1x on fabric fold
5. pocket: 4x
6. belt loops: 1x



fabric layout – solid fabrics
fabric width 110 cm

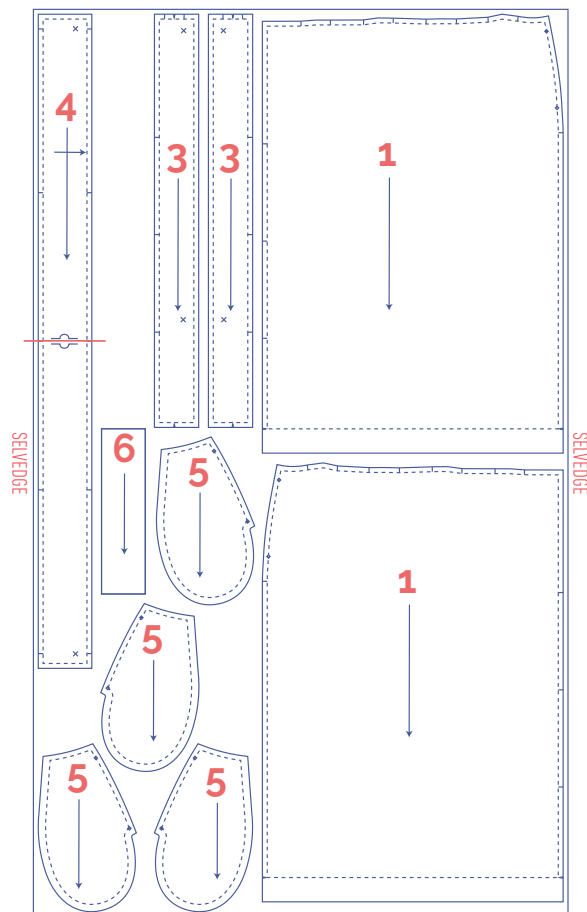
4 - 18

20 - 30



IMPORTANT

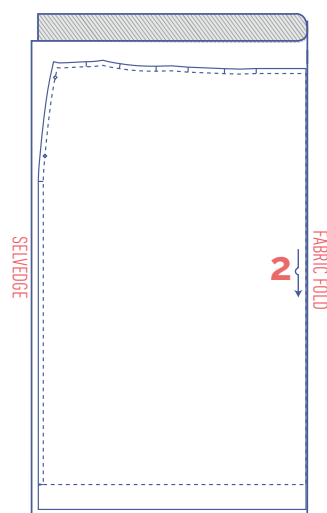
You only need pattern piece 6 once.



IMPORTANT

You only need pattern piece 6 once.

+

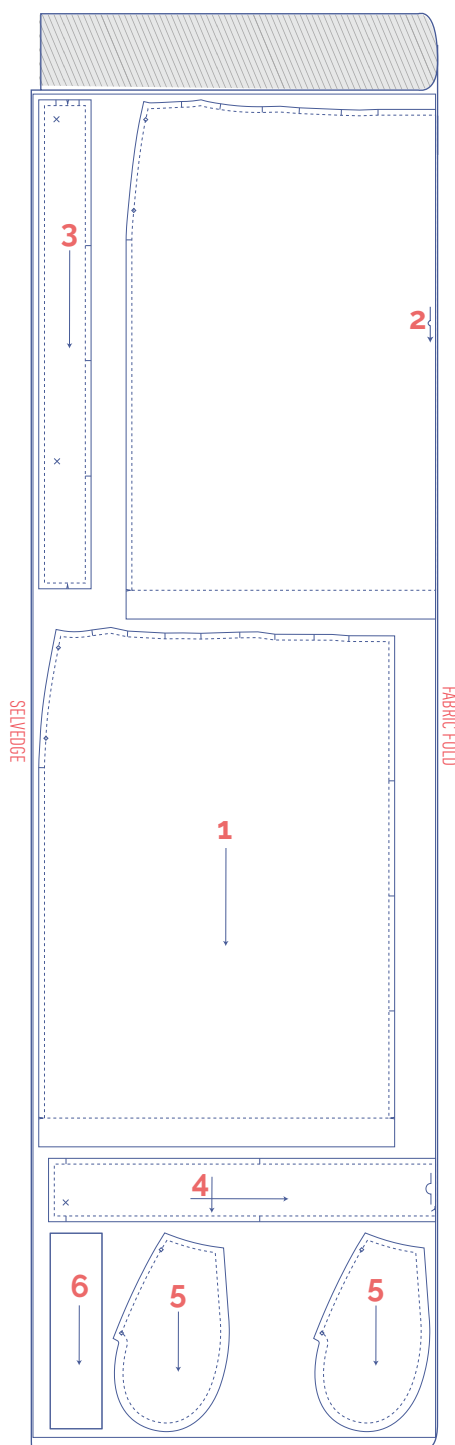
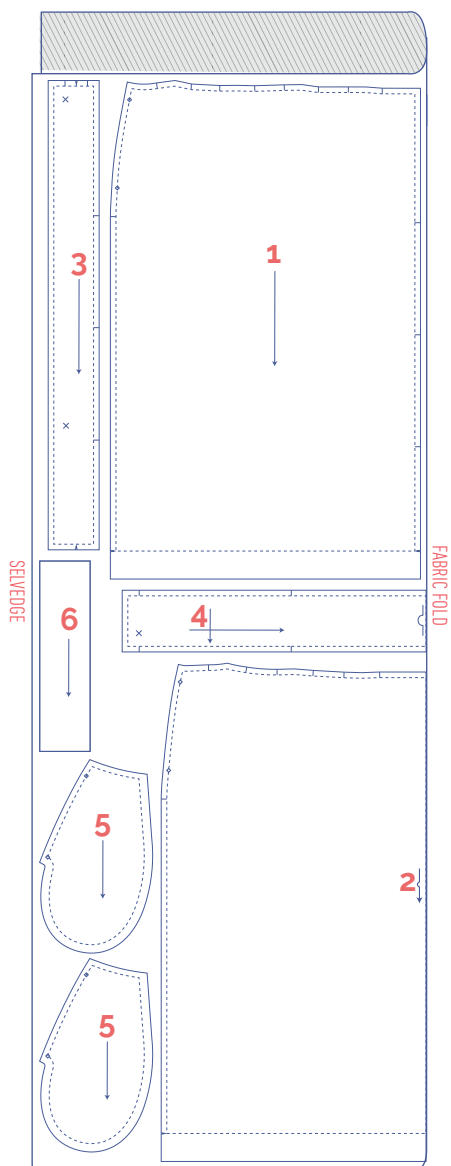


fabric layout – solid fabrics

fabric width 140 cm

4 - 22

24 - 30



marking pattern pieces



Notch the pattern paper and fabric at the following points



single notch



double notch



V notch



mark the following points with marking thread



centre point



snap/button



buttonhole

sewing instructions



The method used to finish the seams depends on the fabric used.
The pieces are always sewn together with the right sides of the fabric facing, unless stated otherwise.

F front

B back

RF right front piece



LF left front piece



CF centre front

CB centre back



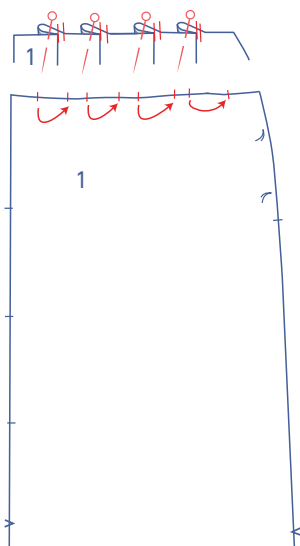
right side



wrong side

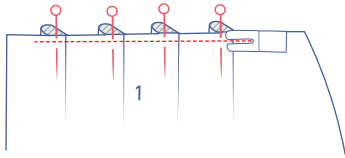


iron-on interfacing

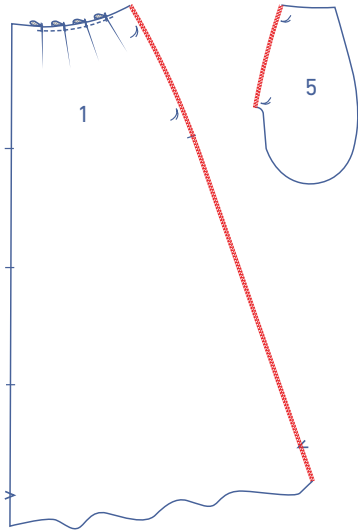


1

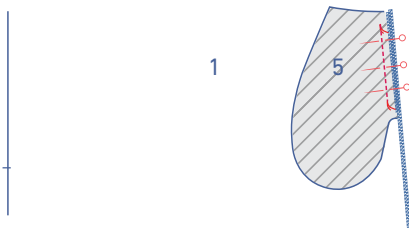
Create the pleats on the front (1) by matching the notches as indicated. Pin into place.



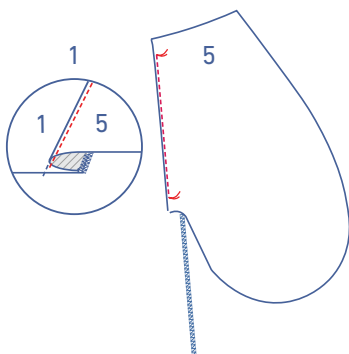
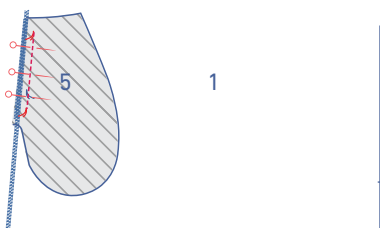
Baste the pleats horizontally into place at presser foot width from the raw edge.



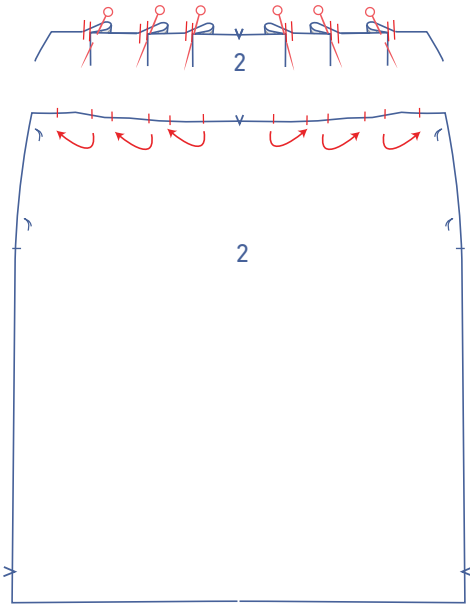
Finish the side seams of the fronts and the indicated edges of the pocket (5) with overlock stitching.



Pin the 2 pocket pieces to the side seams of the front, right sides together, matching the marking threads. Sew the pocket pieces into place between the marking threads.

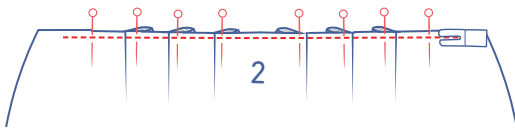


Fold the pocket pieces over and sew the pocket to the seam allowance underneath, between the marking threads, and right next to the edge (= understitch).

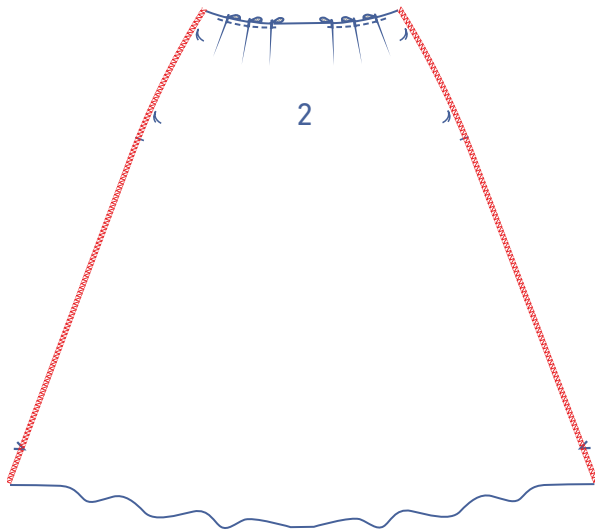


2

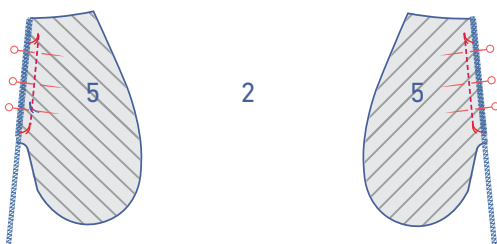
Create the pleats on the back (2) by matching up the notches in the direction indicated on the diagram. Pin into place.



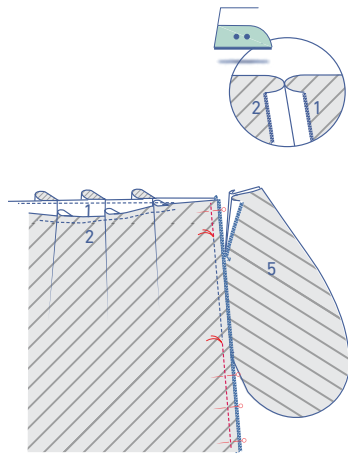
Baste the pleats horizontally into place at presser foot width from the raw edge.



Finish the side seams of the back with overlock stitching.

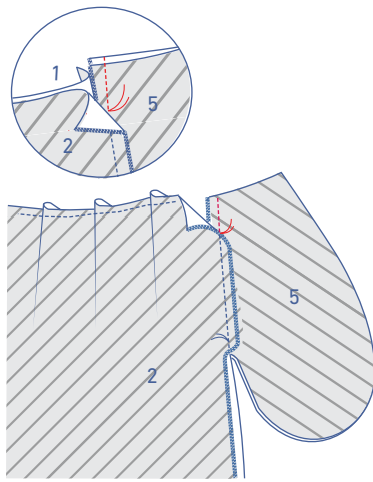


Take the 2 remaining pocket pieces and pin them to the side seams of the back, right sides together, matching the marking threads. Stitch the pockets into place between the marking threads.

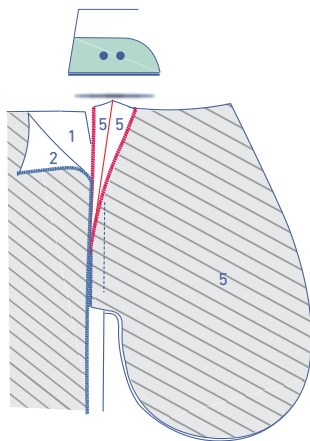


3

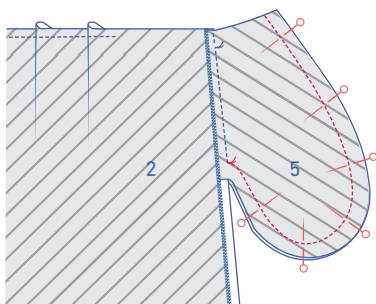
Pin and sew the side seams of the skirt above and below the pocket opening. To do this, you will first need to move the seam allowances of the pocket out of the way. Press the seam allowance open.



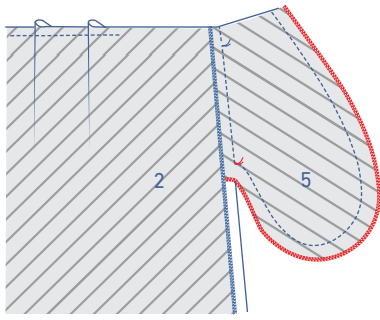
Then pin and stitch the small bit of pocket side seam above the pocket opening.



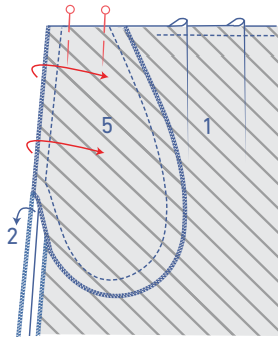
Press the seam allowance open.



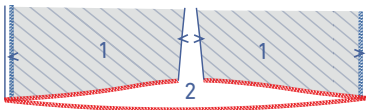
Pin and sew the contours of the pocket pieces together.



Finish the raw edges together with overlock stitching.

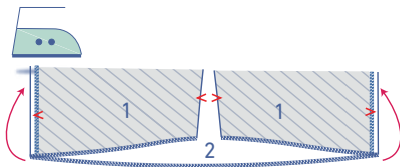


Fold the pocket pieces towards the front. Match the top of the pocket to the top of the front and pin into place.

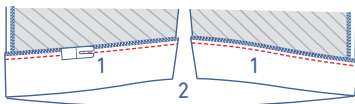


4

Finish the hem with overlock stitching.

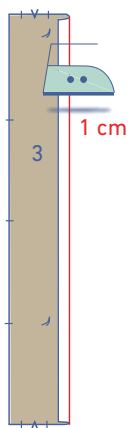


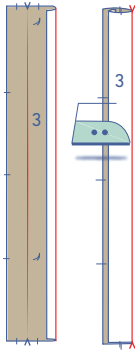
Press the hem allowance over and sew into place.



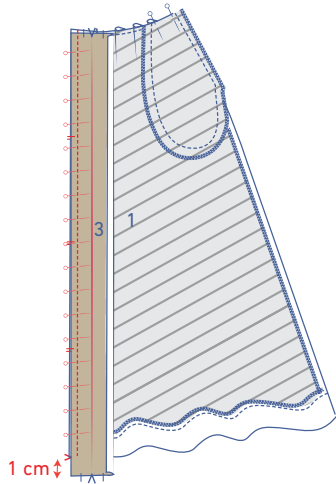
5

Press the unnotched end of the button placket (3) 1 cm onto the wrong side.

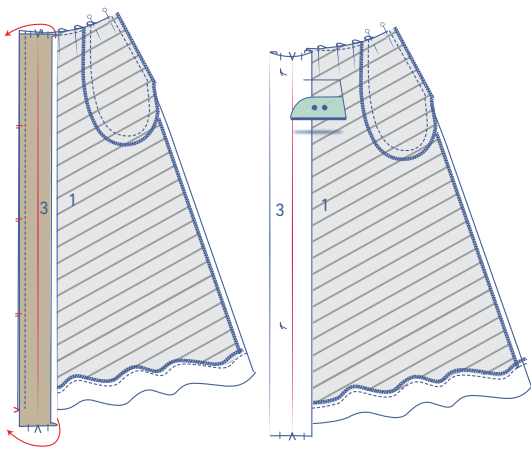




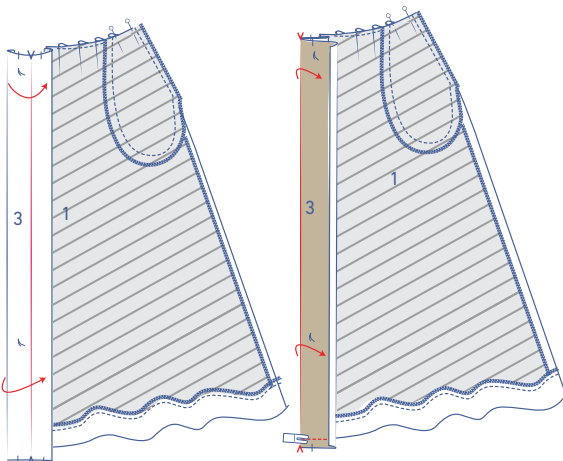
Press the button placket over again at the V notches with the wrong sides of the fabric touching to create a fold line. Open back out.



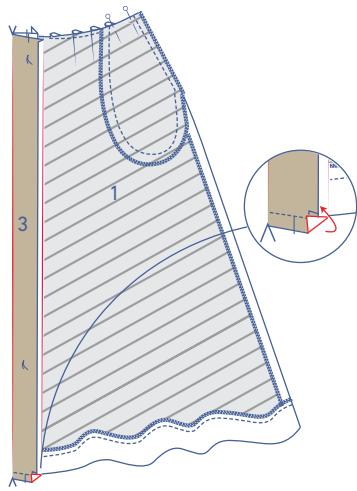
Pin and sew the unpressed raw edge to the wrong side of the front with the notches matching.



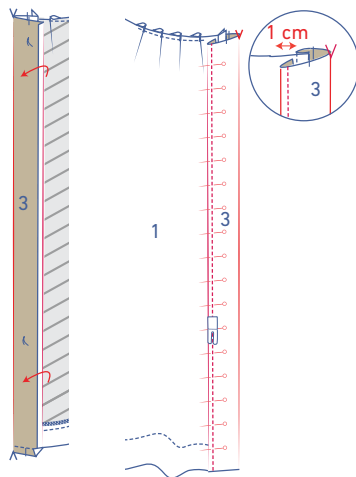
Fold over the button placket at the line you just stitched.



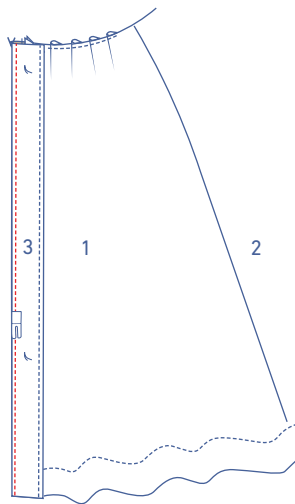
Next, fold it back on itself along the pressed fold line/V notches so that the right sides of the button placket are facing.
Sew the short end at the bottom of the placket (do not catch the hem).



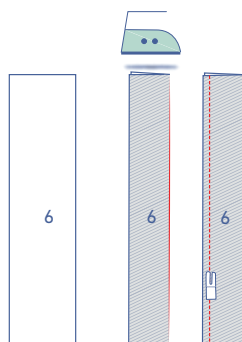
Turn the corner in so that the seam allowance isn't visible from the right side.



Turn the button placket the right way out. Tuck under the long raw edge of the button placket (already pre-pressed) towards the right side of the skirt. The fold line should lie 1 cm past the lapped seam. Sew together at presser foot width from the edge.



Topstitch the other long edge of the button placket at presser foot width from the edge.

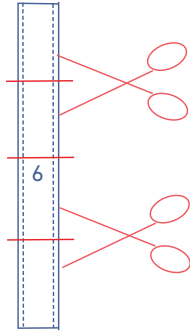


6

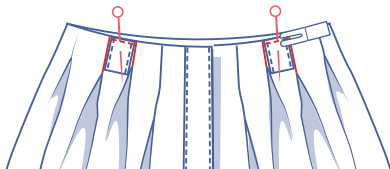
Fold the belt loops (6) in half with the right sides of the fabric facing. Sew the indicated end.



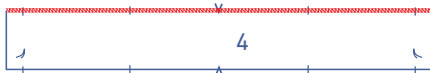
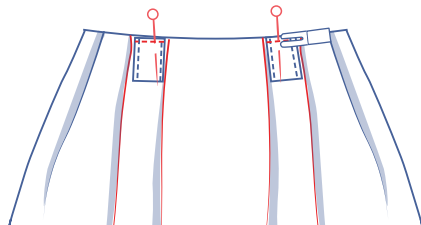
Turn the right way out. Topstitch at presser foot width from the finished edges.



Cut the strip for the belt loops into 4 equal parts.



Pin one short end of each belt loop to the waistline where indicated. Sew into place at presser foot width from the edge.

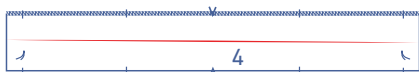


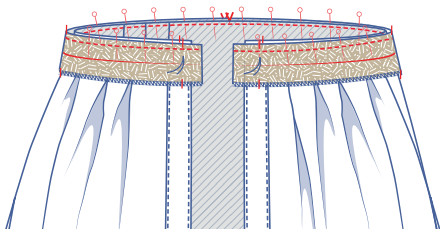
7

Finish the indicated long end of the waistband (4) with overlock stitching.

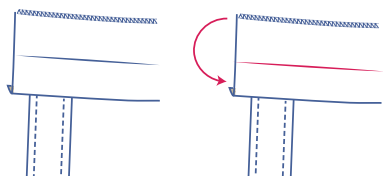


Press the waistband in half lengthwise to create a fold line. Open back out again.

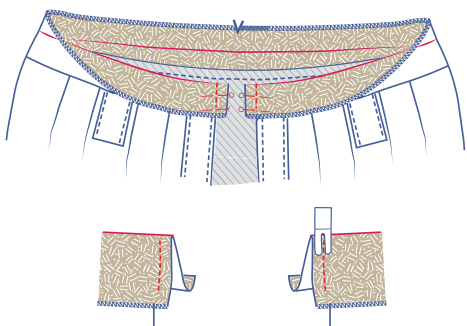




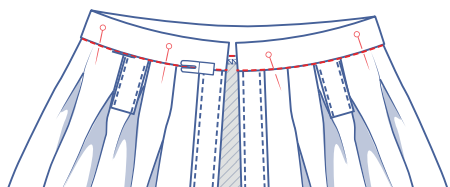
Pin and stitch the non-overlocked end of the waistband to the skirt waistline, matching notches.



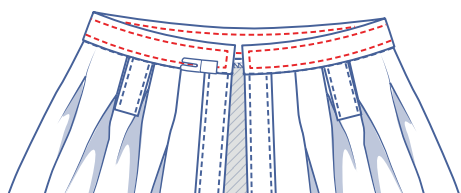
Fold the waistband back up. Next, fold it in half back on itself, lengthwise along the pressed fold line so that the right sides of the waistband are facing.



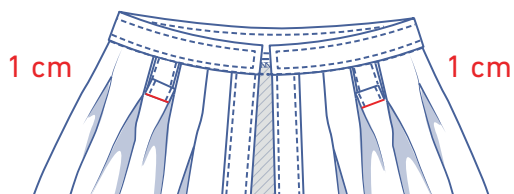
Sew the short ends.



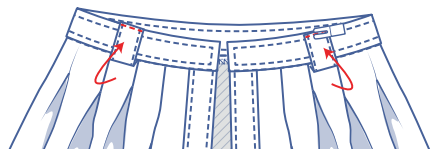
Turn the right way out. Press the waistband neatly flat and pin the waistbands together along the right side. Stitch in the ditch to secure the inside of the waistband.



Topstitch all the way around the edge at presser foot width.

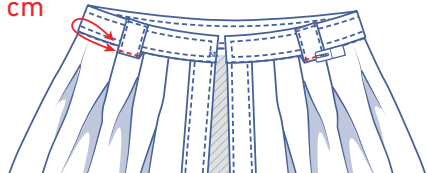


Fold the raw edges of the belt loops up by 1 cm as shown.

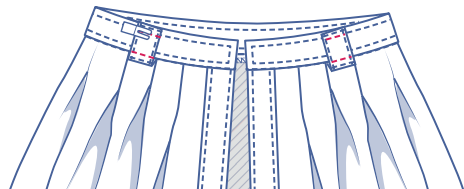


Flip up the belt loops so the fold meets the top of the waistband. Stitch into place at the top of the waistband right next to the edge.

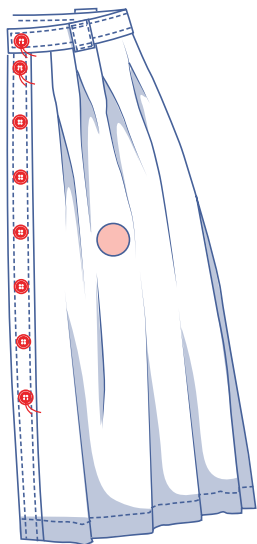
0.5 cm



Now secure the bottom of the belt loops. Stitch the bottom of the belt loops right next to the edge at 0.5 cm from the finished waistband.

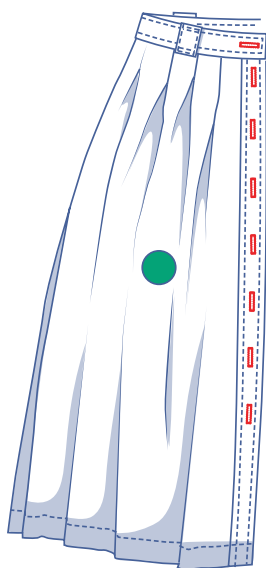


Now, topstitch over and then under the first line of stitching at presser foot width.



8

Sew the buttons onto the LF and the waistband LF where indicated. The position of the top and bottom buttons has been marked on the pattern for you. Divide the distance between both evenly to determine the location of the other buttons.



Make buttonholes on the RF based on the location of the buttons. Note that the buttonhole on the waistband is horizontal, the rest are vertical.