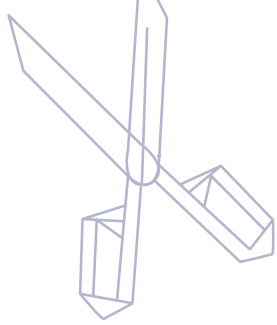




Calvin by Fibre ood



#Calvin



XS - XL

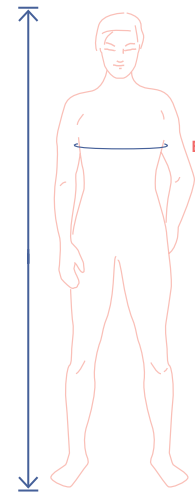


Calvin is everything you would expect from a cosy jumper. We used a basic jumper as our template, then made it much more interesting! The seam lines in the front give Calvin a graphic design feel and give a lot of possibilities for colour blocking - just cut the parts you want in the colours you want! For added interest, bottom cuff sports a mix of ribbed trim and sweatshirt fabric.

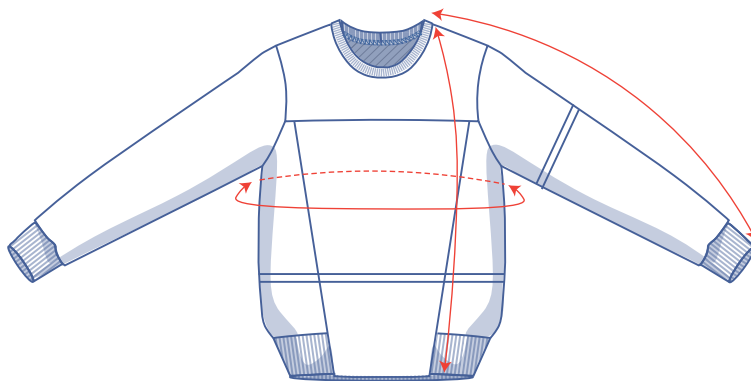
size chart (inches)

size	XS		S		M		L		XL	
body height	67.8	67.8	68.6	68.6	69.3	69.3	70.9	70.9	72.5	72.5
B (bust)	31.5	33.1	34.6	36.2	37.8	39.4	40.9	42.5	44.1	45.7

Choose your size based on your bust measurement.



pattern measurements (in inches)



== shorten or lengthen the pattern here

This chart's measurements are the pattern measurements based on the fabric type and serve as a reference. Ease has been added to the width measurements (in addition to the exact body measurements) for a more comfortable fit. Calvin is designed to have a comfortable cut. Depending on the preferred cut, you could decide to go a size smaller or larger than the recommended size.

size	XS	S	M	L	XL
length*	27.7	28.1	28.5	28.9	29.3
sleeve length**	30.6	31.3	31.8	32.5	33.3
bust	36,9	40	43,2	46,3	49,5

* Including the neck trim and hem band.

** Including the shoulder length and wrist trim.

Compare the stated lengths to the measured or desired lengths. **Lengthen** or **shorten** the sweatshirt and/or sleeves by cutting the pattern pieces at the indicated double lines. Then either increase the distance between the cut pieces by the desired amount (to lengthen), or overlap the pieces (to shorten). Make sure that the CF and CB lines and the side seams are always straight.



IMPORTANT

Adjust the amount of fabric to be used based on these alterations.

supplies



- Thread
- Trim fabric: see table
- Fabric: see table

fabric		XS	S	M	L	XL
trim fabric width 14"	yd	1	1	1	1	1
fabric width 55"	yd	2	2	2	2	2

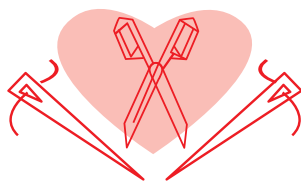
The corresponding fabric layout can be found on page 6 of these sewing instructions.

fabric advice



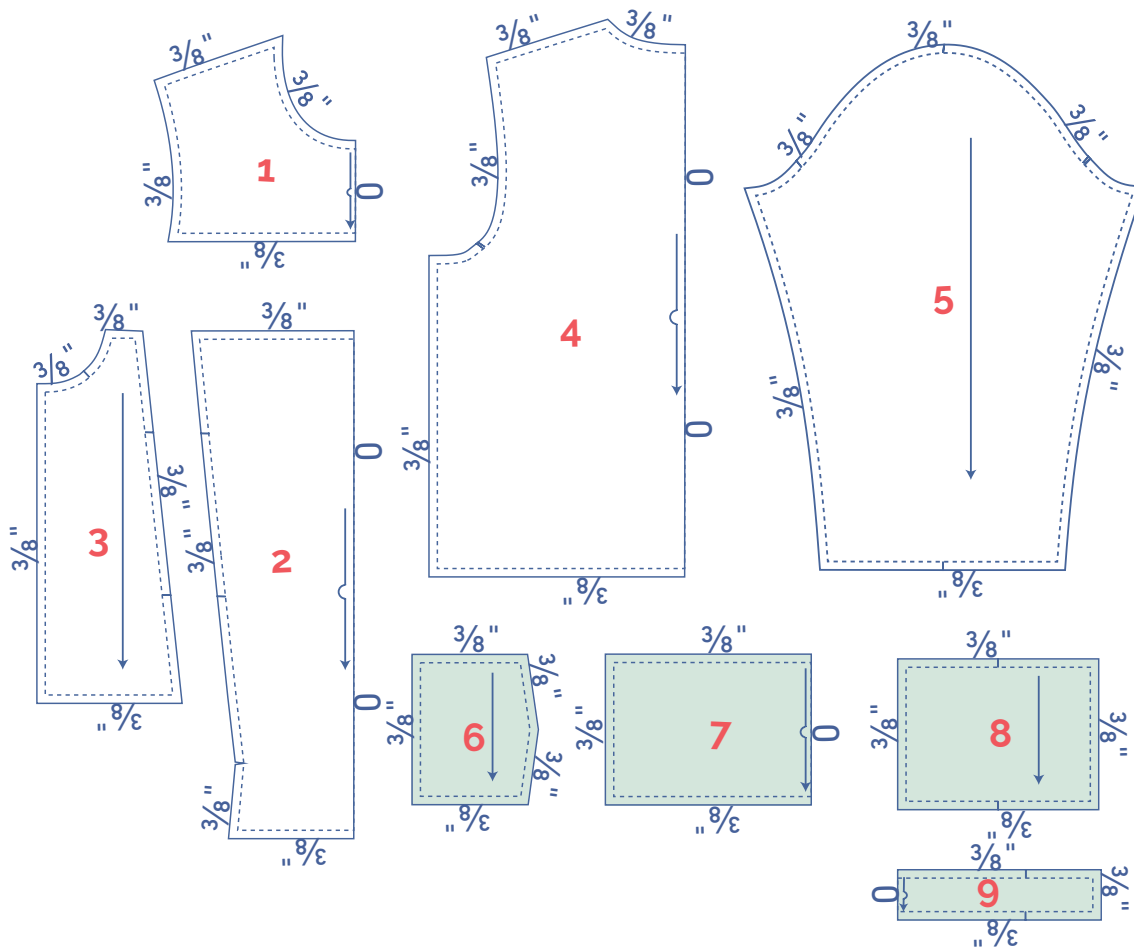
Make the Calvin jumper out of sweatshirt fabric, French Terry or neoprene. Cut the neck trim, wrist trim from rib-knit trim. The trim fabric is elastic, but also maintains its shape.

Proud to be #Sewista



pattern pieces & seam allowances (inches)

To sew the garment as described in the instructions, draw the illustrated seam allowances around the paper pattern pieces before cutting them out. If you are using a PDF pattern, the pattern can be printed with or without seam allowance. To find out more, watch the [video](#).



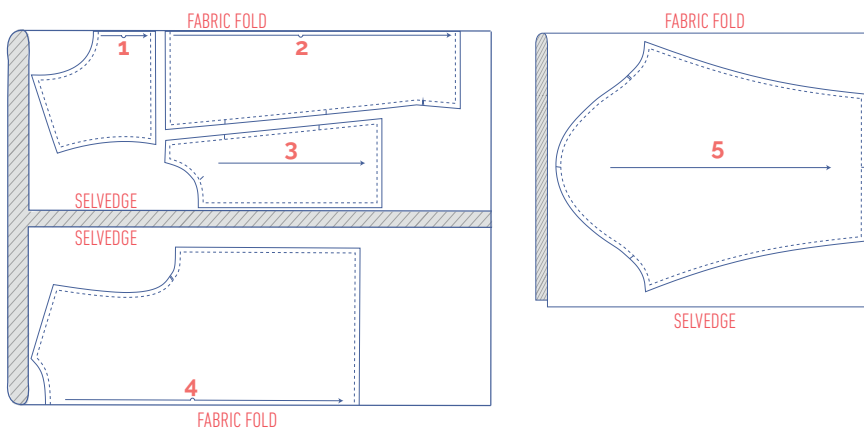
1. top front: 1x on fabric fold
2. front centre piece: 1x on fabric fold
3. front side piece: 2x
4. back: 1x on fabric fold
5. sleeve: 2x
6. hem band front: 2x (in trim fabric)*
7. hem band back: 1x on the fabric fold (in trim fabric)*
8. wrist trim: 2x (in trim fabric)*
9. neck trim: 1x on the fabric fold (in trim fabric)*

* If you are making the jumper in rib knit, cut the pattern piece in rib knit as well and not in trim fabric.

	material type
	fabric
	trim fabric

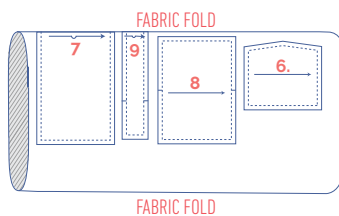
fabric layout – solid fabrics fabric width 55"

XS - XL



fabric layout for trim fabric

XS - XL



marking pattern pieces

	notch the pattern paper and fabric at the following points
	single notch
	double notch
	V notch



casual

sewing instructions



The method used to finish the seams depends on the fabric used.
The pieces are always sewn together with the right sides of the fabric facing, unless stated otherwise.

F front

B back

CF centre front

CB centre back



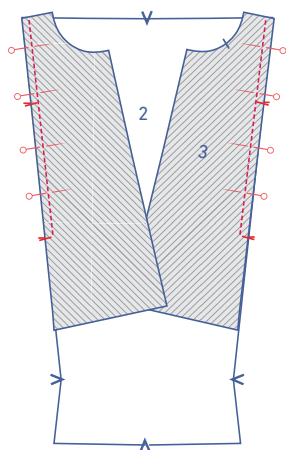
right side



reverse side

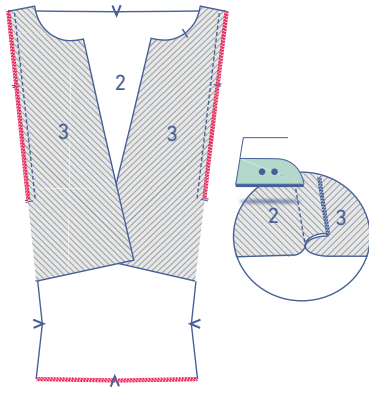


trim fabric

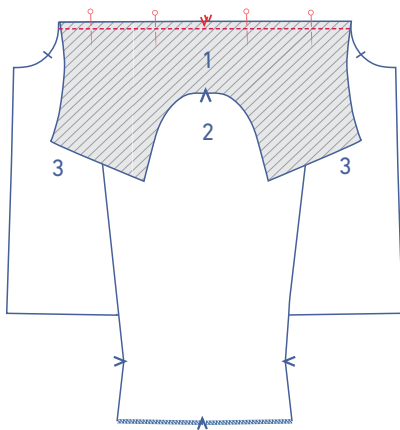


1

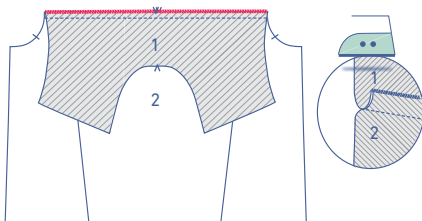
Pin the diagonal sides of the front centre piece (2) and the front side pieces (3) making sure that the notches match perfectly. Sew all the way down to the bottom-most notch.



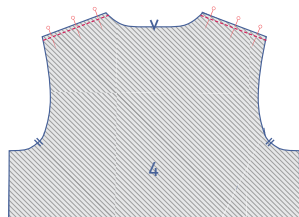
Finish the raw edges using an overlock stitch along where you just sewed. Press the seam allowance towards the sides. Overlock the hem of the front centre piece as well.



Pin and sew the bottom of the top front (1) to the tops of pieces 2 and 3. Make sure that the V notches match.

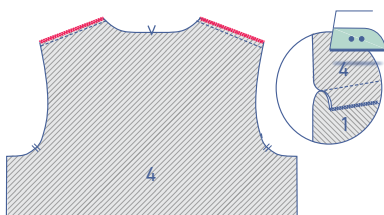


Finish the raw edges together using an overlock stitch. Press the seam allowance down towards the bottom of the jumper.

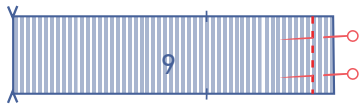


2

Pin and sew the shoulder seams of the front and back.

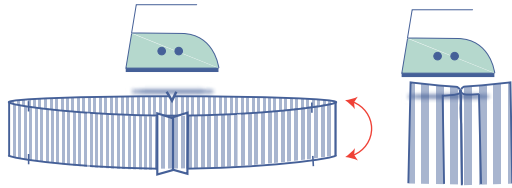


Finish the raw edges together using an overlock stitch. Press the seam allowance towards the front.

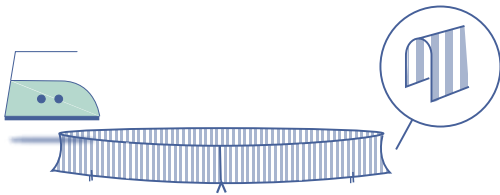


3

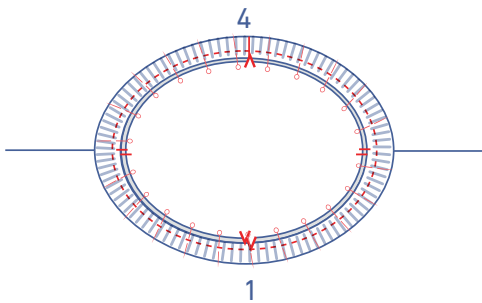
Fold the neck trim (9) in half, right sides to gether, and sew together the short ends.



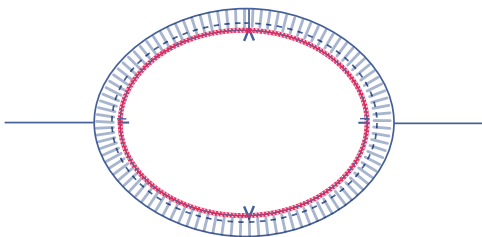
Press the seam open.



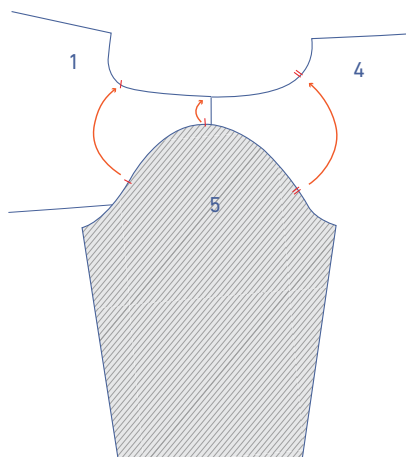
Press the neck trim in half lengthwise, wrong sides facing.



Pin and sew both of the raw edges of the neck trim to the neckline. The neck trim seam should line up with the V-notch that indicates the CB and the neck trim's notches should line up with the shoulder seams. The circumference of the neck trim is smaller than the neckline, so stretch the neck trim as you sew to match the neckline.

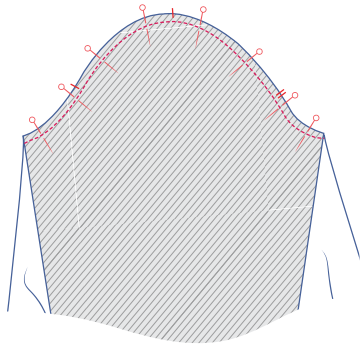


Finish all of the raw edges together using an overlock stitch.

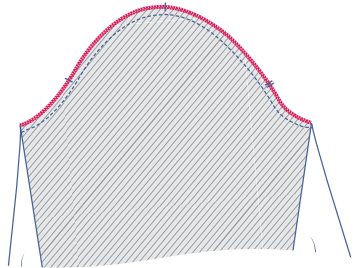


4

Lay the top of the sleeve (5) (= the sleeve cap) on top of the armhole with the corresponding markings matching exactly. The single notch marks the front, while the double notches marks the back. The upper-most notch should be aligned with the shoulder seam.



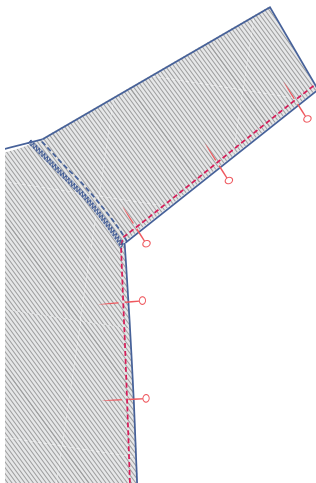
Pin and sew in place.



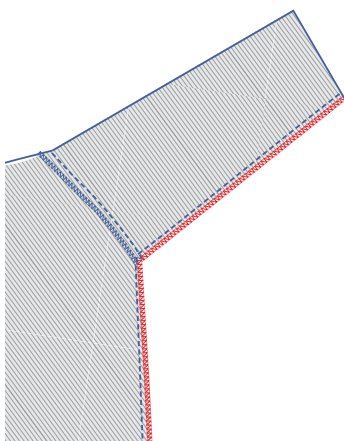
Finish the raw edges together using an overlock stitch.

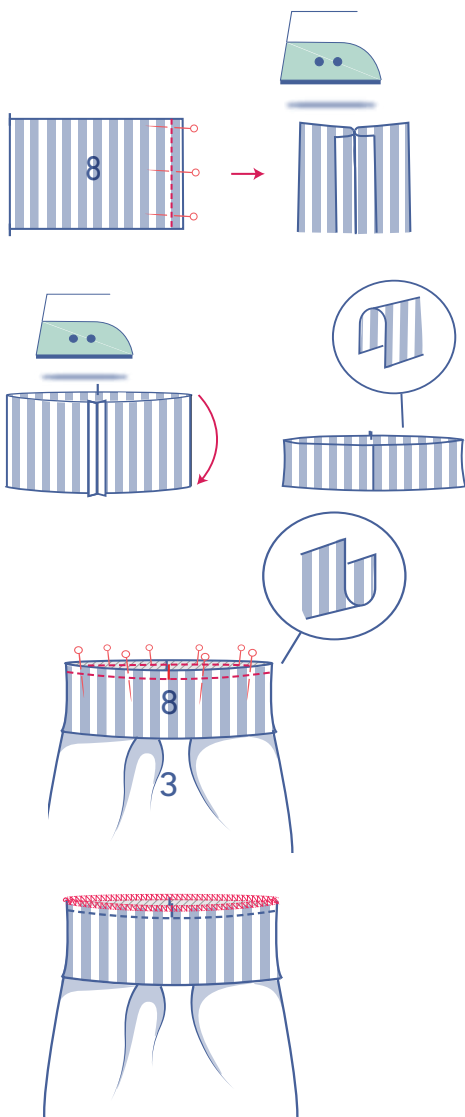
5

Pin and sew the side and underarm seams in place.



Finish the raw edges together using an overlock stitch.





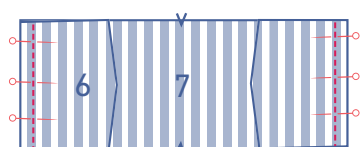
6

Sew the short sides of the wrist trim (8) (right sides together) and press the seam open.

Press the wrist trim in half lengthwise with the wrong sides together.

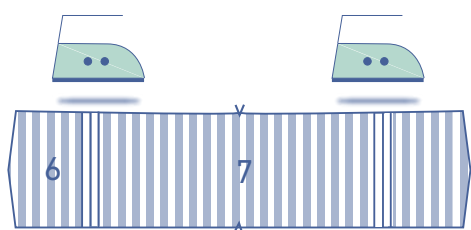
Pin and sew both raw edges of the wrist trim to the bottom of the sleeve. Make sure that the seams and notches continue to match. The circumference of the wrist trim is smaller than the sleeve hem, so stretch the wrist trim as you sew to match the sleeve hem.

Finish the raw edges together using an overlock stitch.

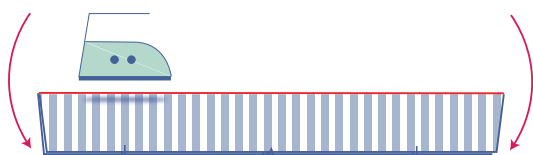


7

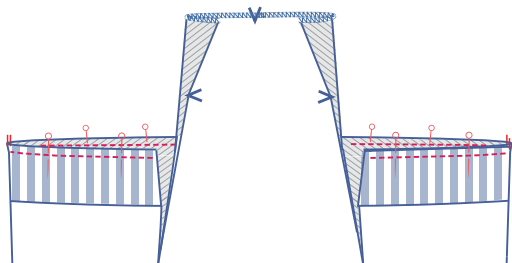
Pin and sew both front hem band pieces (6) to the back hem band piece (7), right sides together, with the short sides matching.



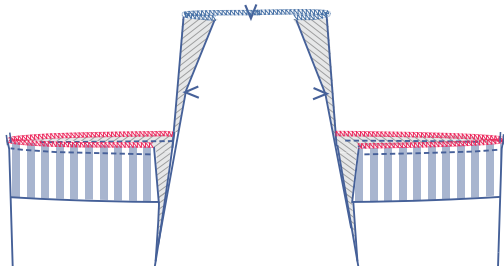
Press the seams open.



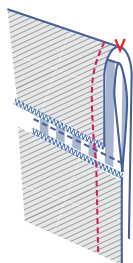
Fold the hem bands in half lengthwise with the wrong sides together and press.



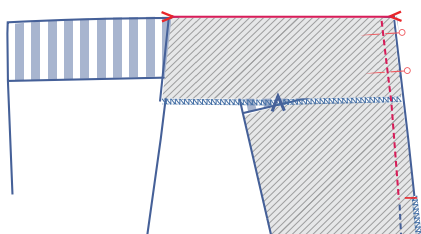
Pin and sew the hem band to the bottom. Make sure that the seams and notches continue to match. The circumference of the hem band is smaller than circumference of the body, so stretch the hem band to match the body as you sew.



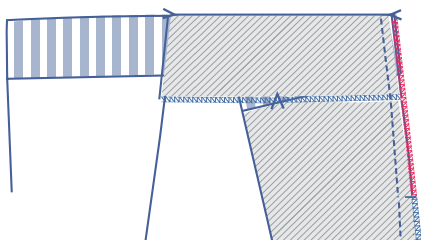
Finish the raw edges together using an overlock stitch.



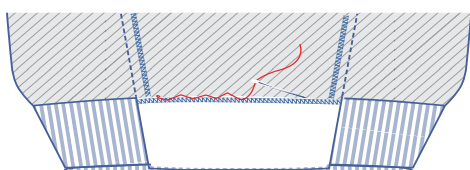
Fold over the shaped facing of the front centre piece at the V notch, so that the right sides of the fabric are touching. At the edges, the hem band should be sandwiched inside the fold.



Pin and sew in place.



Finish the raw edges using an overlock stitch (start stitching from where you stopped before).



Turn the hem's shaped facing back to the wrong side. Sew the piece of the hem in place if necessary.

#Calvin



@Nele De Schepper



@Anneleen Van Den Daele



@Leen De Saedeleir