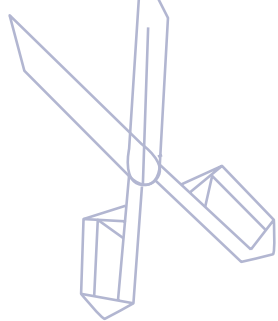
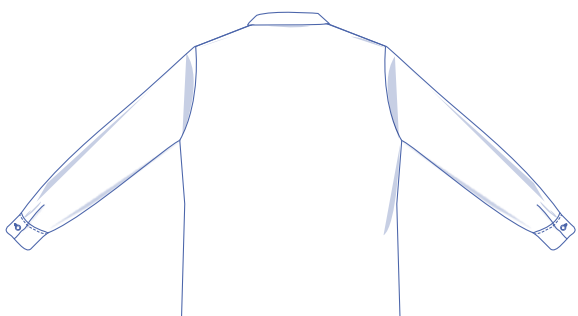




Harold by Fibre ood



#Harold



XS - XL

***✱✱

It's the Harold dress shirt with pockets that makes for a stylish outfit. The look you end up with changes based on how you choose to wear it ... with a T-shirt underneath or simply buttoned up? The shirt is relatively close-fitting and we chose a striped jacquard fabric for our sample.

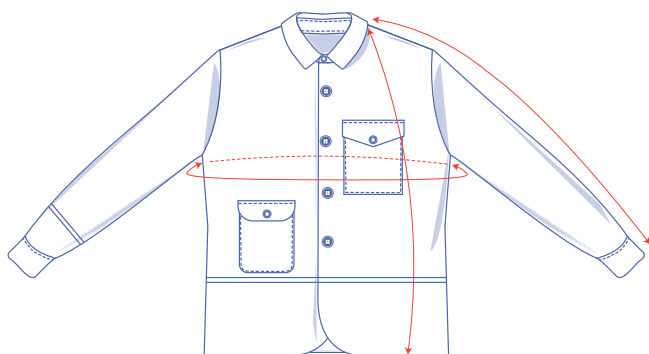
size chart (in cm)

size	XS		S		M		L		XL	
body height	172	172	174	174	176	176	180	180	184	184
B (bust)	80	84	88	92	96	100	104	108	112	116
H (hip)	82	86	90	94	98	102	106	110	114	118

Choose your size based on your **bust measurement**.



pattern measurements (in cm)

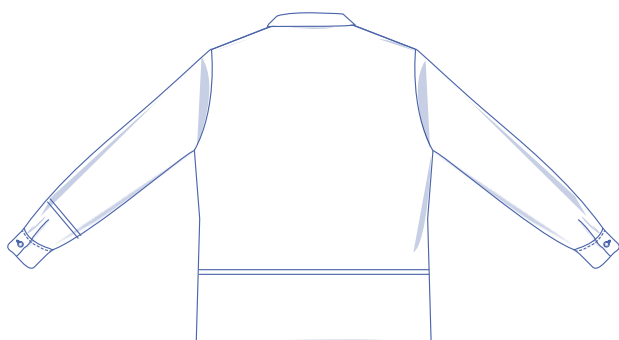


This chart's measurements are the pattern measurements based on the fabric type and serve as a reference. Ease has been added to the width measurements (in addition to the exact body measurements) for a more comfortable fit. Harold is designed to have a **comfortable cut**. Depending on the preferred cut, you could decide to go a size smaller or larger than the recommended size.

— shorten or lengthen the pattern here

size	XS	S	M	L	XL
length	71.5	72.5	73.5	74.5	75.5
sleeve length*	79.5	80.75	82	83.25	84.75
bust	99.5	107.5	115.5	123.5	131.5

* Including shoulder length and cuff.



Compare the stated lengths to the measured or desired lengths. **Lengthen** or **shorten** the shirt and/or sleeves by cutting the pattern pieces at the indicated double lines. Then either increase the distance between the cut pieces by the desired amount (to lengthen), or overlap the pieces (to shorten). Make sure that the CF and CB lines and the side seams are always straight.

IMPORTANT

Adjust the amount of fabric to be used based on these alterations.



supplies



- Thread
- Buttons (Ø 1.1 cm): 9
- Iron-on interfacing: max. 70 cm
- Cotton/light-weight fabric: max. 70 cm
- Fabric: see table

fabric		XS - M	L	XL
fabric width 140 cm	cm	160	165	190

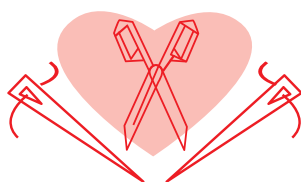
The corresponding fabric layout can be found on page 6 of these sewing instructions.

fabric advice



The Harold shirt sample is made using a medium-weight jacquard. A number of different fabrics work here, including: denim, cotton twill, corduroy and wool.

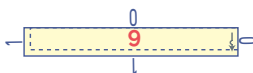
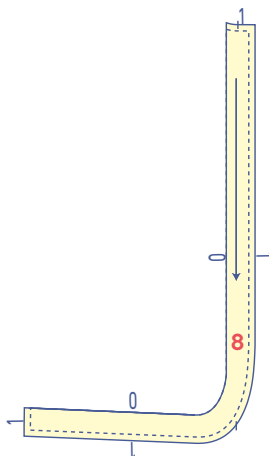
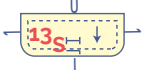
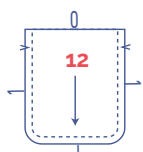
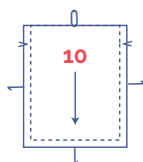
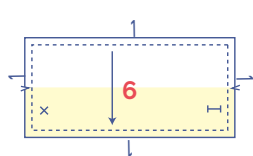
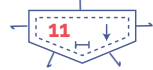
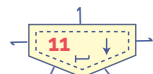
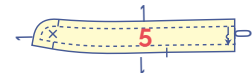
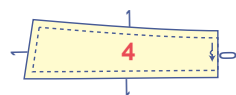
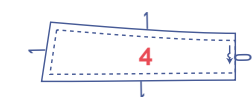
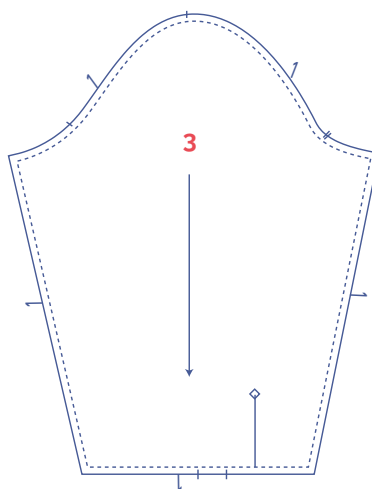
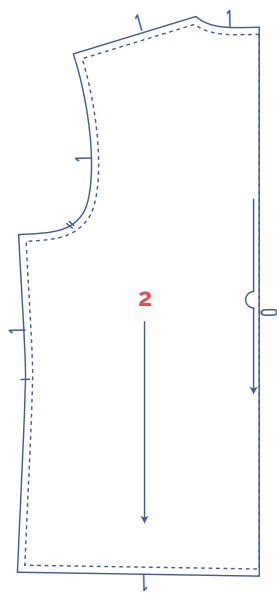
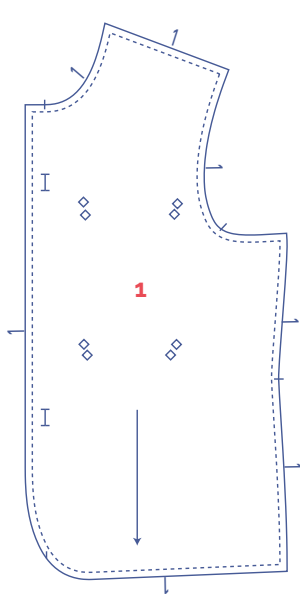
Proud to be #Sewista



pattern pieces & seam allowances (in cm)

To sew the garment as described in the instructions, draw the illustrated seam allowances around the paper pattern pieces before cutting them out. If you are using a PDF pattern, the pattern can be printed with or without seam allowance.

To find out more, watch the [video](#).



1. front: 2x
2. back: 1x on fabric fold
3. sleeve: 2x
4. collar: 2x (1x in fabric, 1x cotton)
5. collar band: 2x on fabric fold
6. cuff: 2x
7. sleeve binding: 2x
8. front facing: 2x
9. back facing: 1x on fabric fold
10. breast pocket: 1x
11. breast pocket flap: 2x (1x in fabric, 1x in cotton)
12. pocket: 1x
13. flap: 2x (1x in fabric, 1x in cotton)

IMPORTANT

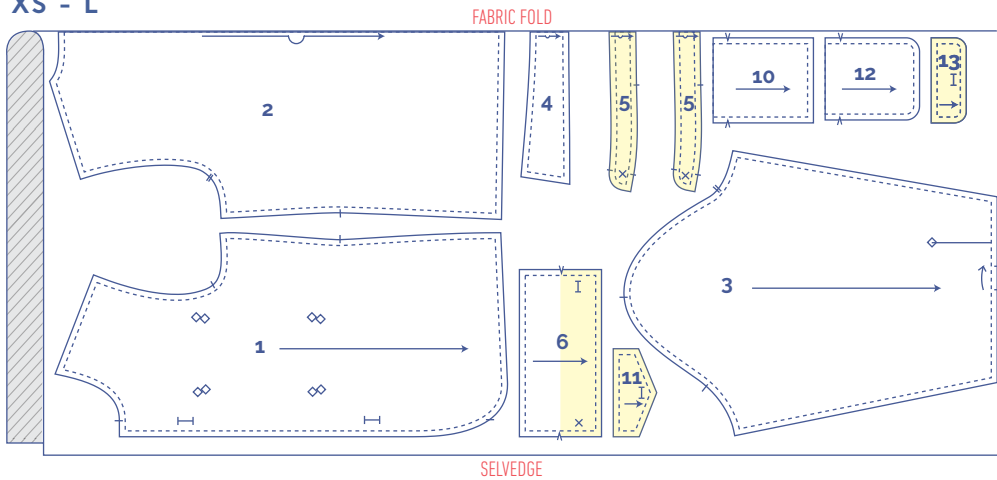
The pieces highlighted in light yellow have iron-on interfacing attached to the wrong side.

?	material type
	fabric
	iron-on interfacing

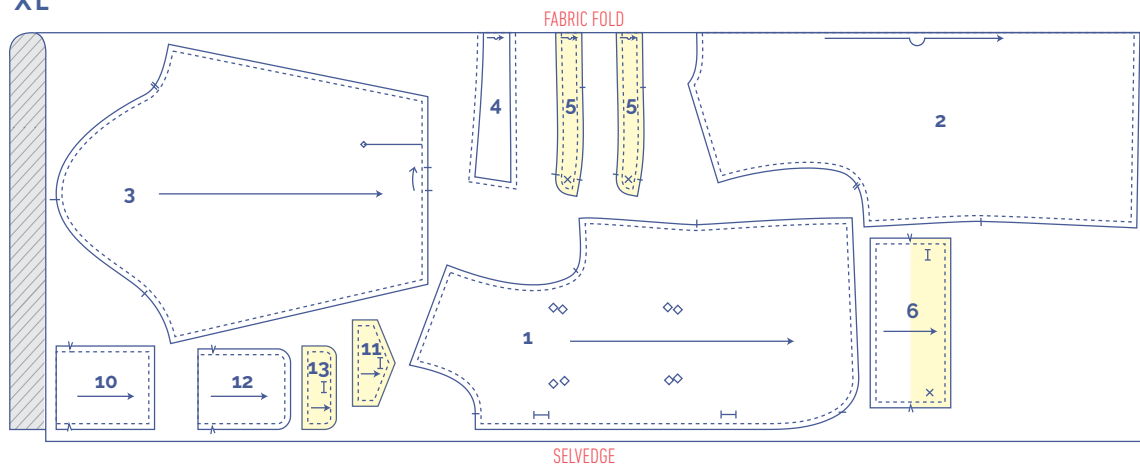
fabric layout – solid fabrics

fabric width 140 cm

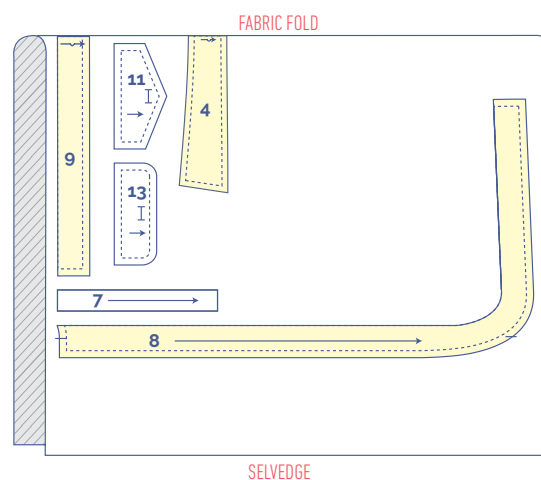
XS - L



XL



for cotton / light-weight fabrics 140 cm wide

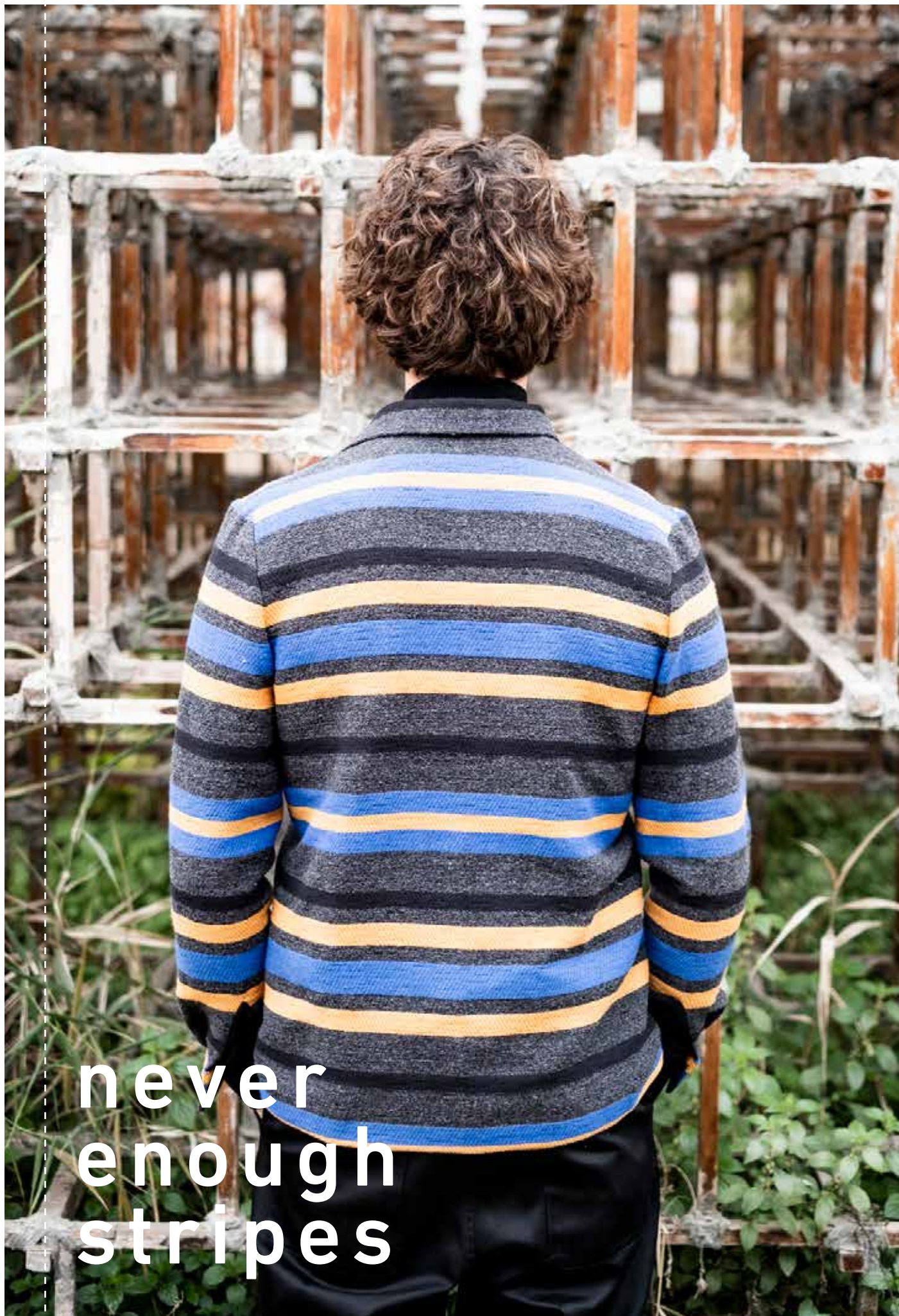


IMPORTANT

Pattern pieces 11 and 13 are only needed 1x in cotton.

marking pattern pieces

	notch the pattern paper and fabric at the following points
	single notch
	double notch
V	V notch
	mark the following points using marking thread
	centre point
	snap/button
	buttonhole






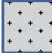
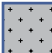


never
enough
stripes

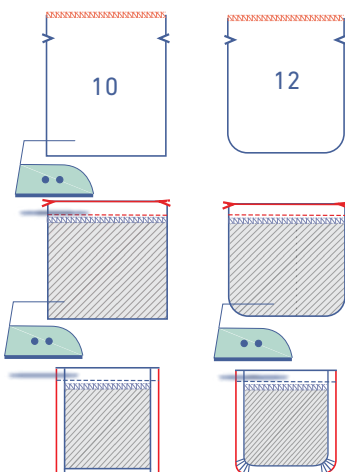
sewing instructions



The method used to finish the seams depends on the fabric used.
The pieces are always sewn together with the right sides of the fabric facing, unless stated otherwise.

F	front
B	back
RF	right front 
LF	left front 
	right side
	reverse side
	iron on interfacing
	cotton or lightweight lining right side
	cotton or lightweight lining reverse side

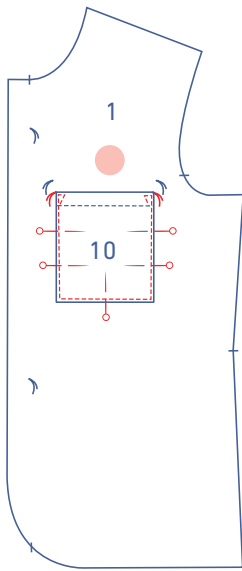
1



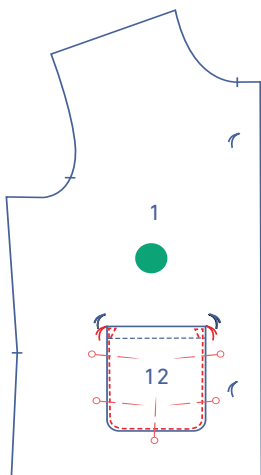
Finish the top of the breast pocket (10) and the pocket (12) using an overlock stitch.

Fold the top of the pocket down at the V notch. Sew into place at 2.5 cm from the top.

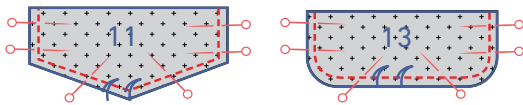
Fold and press the other edges 1 cm over to the wrong side.



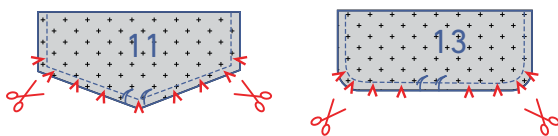
Pin the chest pocket to the LF (1) at the place marked. Sew in place right next to the edge. Finish by sewing reinforcement triangles at the corners of the pocket as shown.



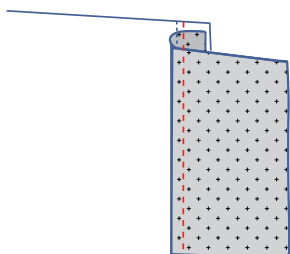
Pin the other pocket to the RF (1) at the place marked. Sew in place right next to the edge. Finish by sewing reinforcement triangles at the corners of the pocket.



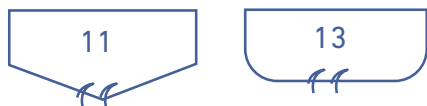
Place the pairs of pocket flaps on top of each other, right sides together (11+11, and 13+13). Sew around the edges shown.



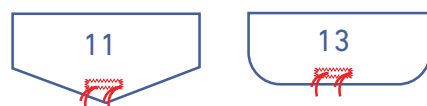
Cut triangles out of the seam allowance to enable the fabric to lie flat when you turn it out..



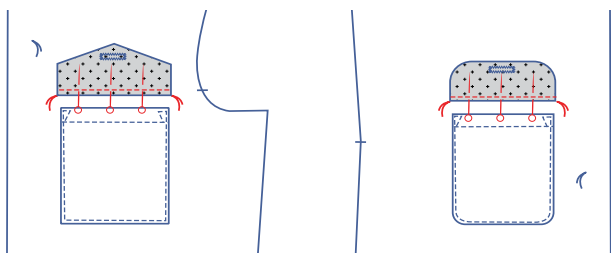
Unfold the flaps you just sewed and tuck the seam allowance towards the side of the cotton flap. Then sew a line of stitching 2mm from the seam through all the layers (cotton flat + seam allowances) as far as you can.



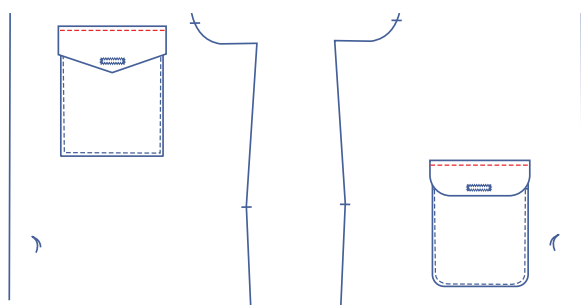
Now lie the flaps flat again (the wrong side of the fabric should be touching).



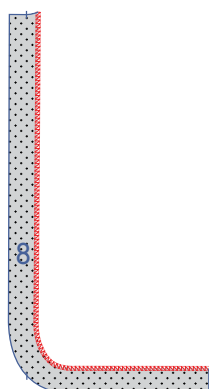
Make horizontal buttonholes at the place marked.



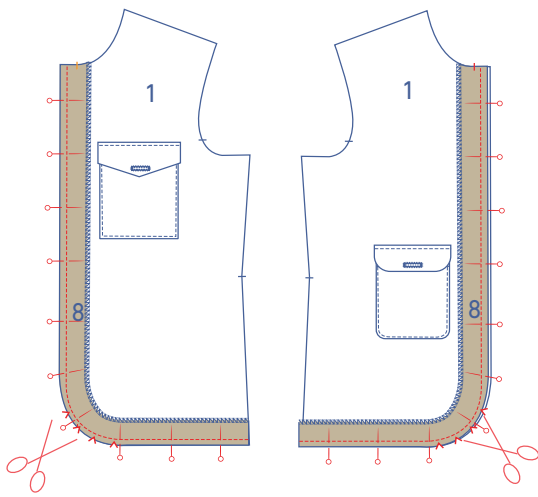
Pin the raw edges of both flaps at the marking threads above the pocket. Sew into place at 0.5 cm.



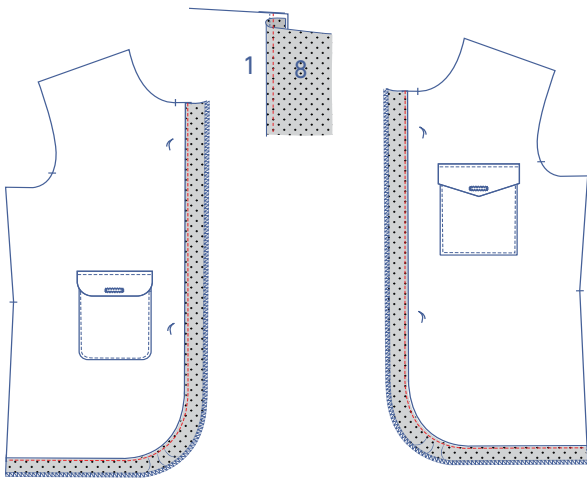
Fold the flap down and sew in place next to the edge.



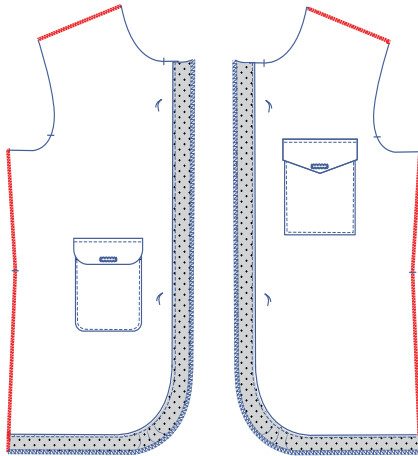
Finish the edge of the front facing without the notches (8) using an overlock stitch.



Pin and sew the front facing to the front. Cut V notches from the seam allowance in the curves.

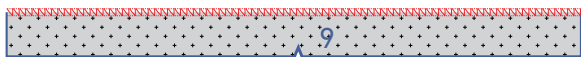


Fold the facing over and sew it to the seam allowance underneath as shown, right next to the seam. Leave the facing folded down at the hem.

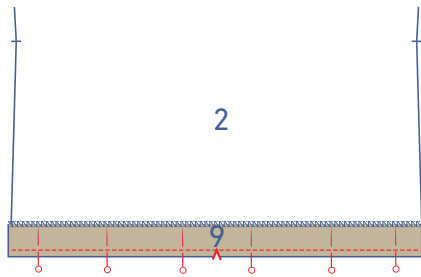


Overlock the side and shoulder seams.

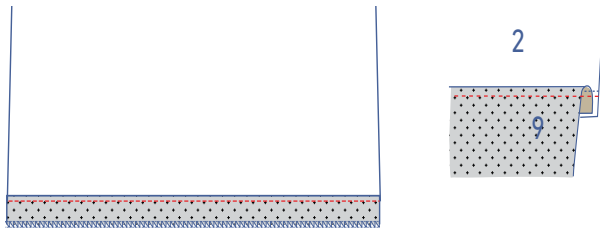
2



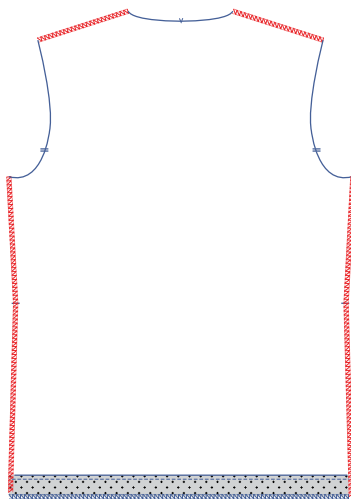
Finish the edge of the back facing without the notches (9) using an overlock stitch.



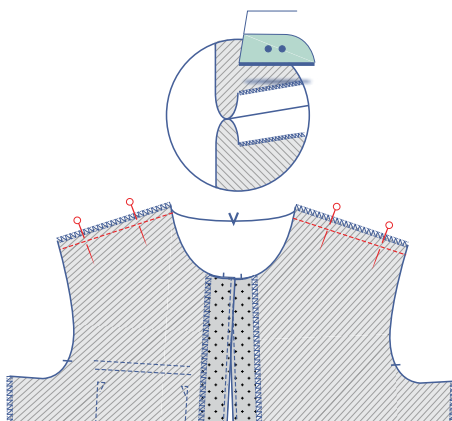
Pin and sew the facing to the back hem with the notches matching.



Fold the facing downwards and sew it to the seam allowance underneath as shown, right next to the seam. Leave the facing folded down.

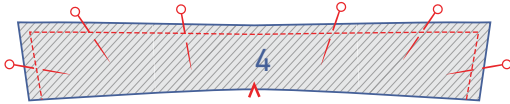


Overlock the side and shoulder seams (with facing folded down).



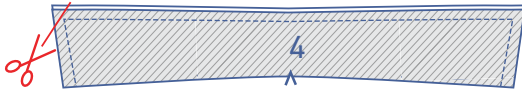
3

Pin and sew the shoulder seams. Press the seam allowance open.

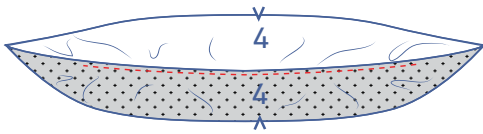


4

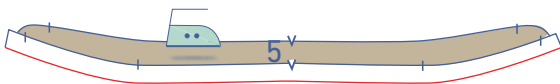
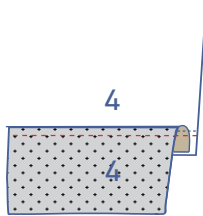
Pin and sew the contour of the collar pieces (4) to each other, except for the bottom.



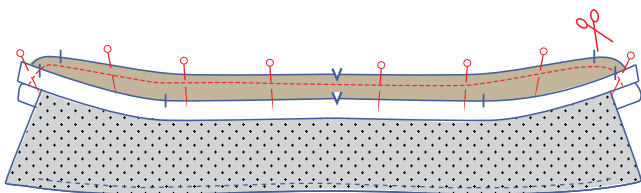
Grade and trim the corner seam allowances at the corners.



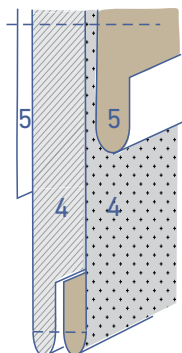
Open up the collar pieces so that they lie next to each other. Fold the seam allowance toward the sewn undercollar and stitch at 2 mm from the seam through all layers of fabric. Press the collar neatly.

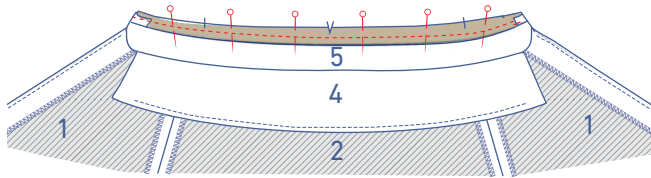


Press 1 cm of the bottom of one collar band over to the wrong side.

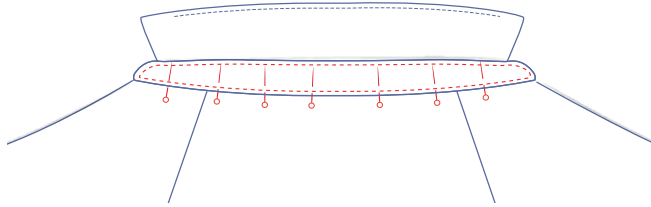


Stack both collar stands with the right sides facing each other. The collar stand with the pressed over bottom should be on top. Slide the collar (cotton side facing up) between the 2 collar stands and line up the raw edges. Pin and sew the pieces together. Grade and trim the corner seam allowances at the curves. Turn the collar bands inside out.

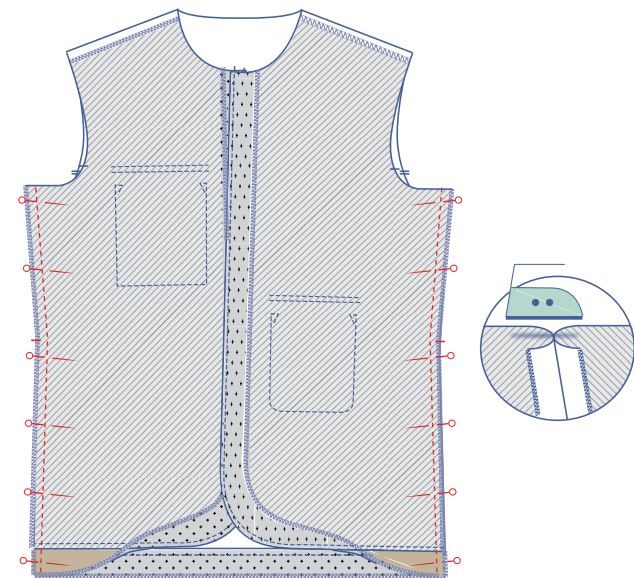




Pin and sew the bottom of the unpresse collar stand to the neckline, along the wrong side of the neckline.



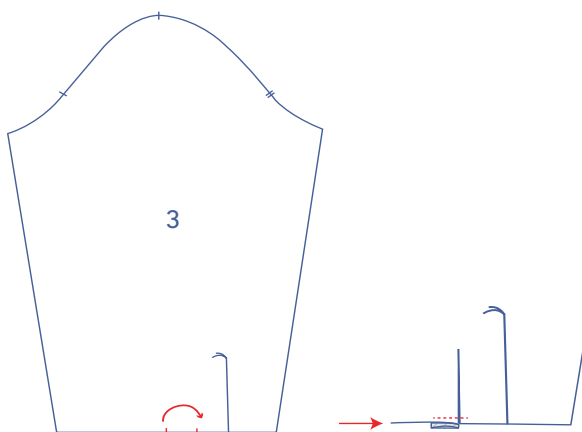
Fold the collar stand with the bottom that has been pressed over onto the right side of the garment. The fold line should lie precisely over the previous row of stitching. Pin and sew into place just next to the edge.



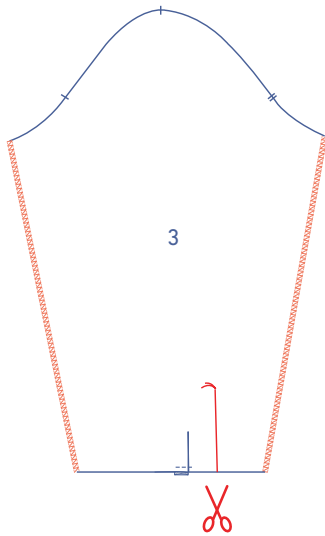
5

Pin and sew the side seams of the front and back, making sure the hem facings are folded down. Press the seam allowance open.

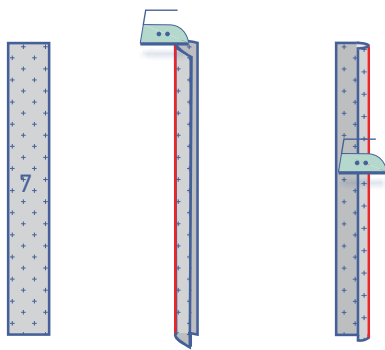
6



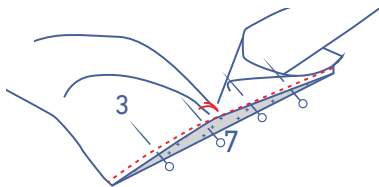
Fold the notches at the bottom of the sleeve (3) together in the direction indicated. Sew securely at the bottom at 0.5 cm from the raw edge.



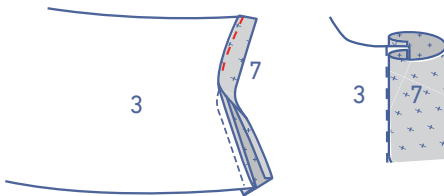
Overlock the sleeve side seams. Cut on the indicated line up to the marking thread to create the sleeve split.



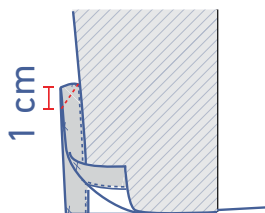
Iron the sleeve binding (7) as follows: first press in half lengthwise.



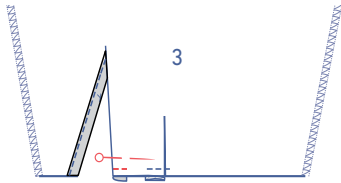
Slide the sleeve binding under the sleeve with the right side facing up. Line up the longnon pressed end of the binding tape with the edges of the sleeve split. At the marking thread, pull the sleeve a little to the side. Sew into place at 0.5 cm. You'll only have sewn a tiny bit of fabric at the marking thread.



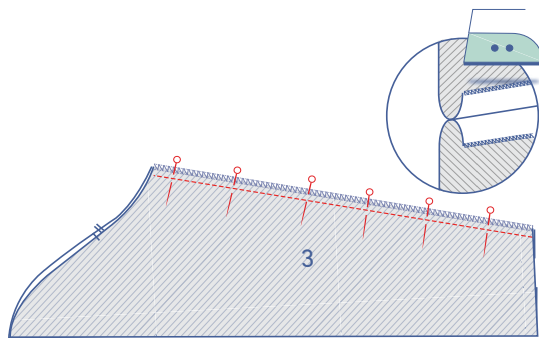
Fold the sleeve binding onto the right side of the sleeve. Tuck the raw edge under and place the pressed fold line directly over the previous stitching. Sew into place right next to the edge.



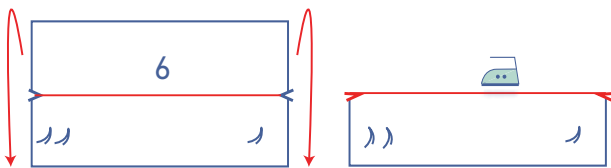
Fold the sleeve in half crosswise, with the right side facing in. Sew the top of the sleeve binding together at an angle.



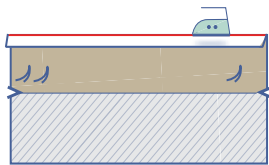
Fold the binding at the front of the sleeve back toward the wrong side of the sleeve and sew in place. The part with the fold indicates which side is the sleeve front.



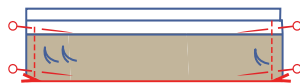
Pin and sew the sleeve sides. Press the seam allowance open.



Press the cuff in half lengthwise with the right side on the outside.



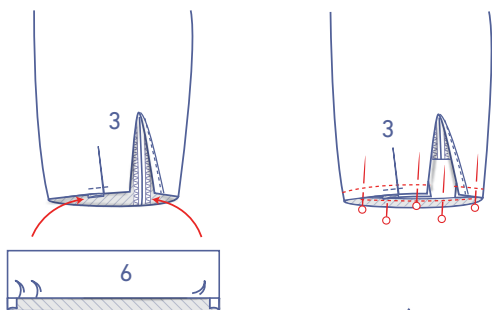
On the long side where the basting threads are located, fold 1 cm over to the wrong side and press.



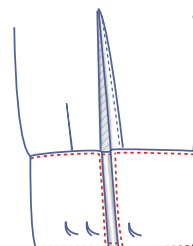
Fold the cuff in half where the pressed fold line is with the right sides of the facing facing. Sew the short sides.



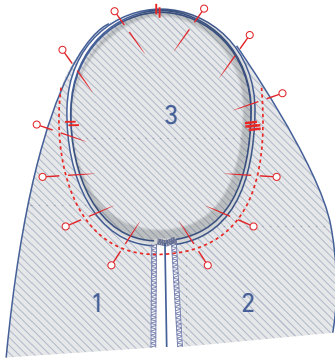
Turn inside out.



Slide the cuff into the sleeve and pin the unpressed raw edge against the sleeve bottom along the wrong side. Sew in place. Turn the cuff over to the right side of the sleeve. Lay the fold line directly onto the stitching. Sew in place next to the edge.

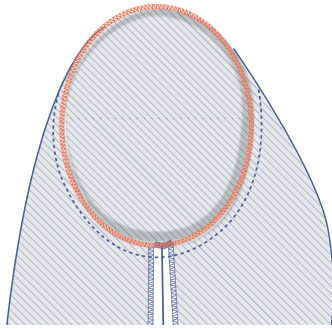


Finish the stitching around the cuff.

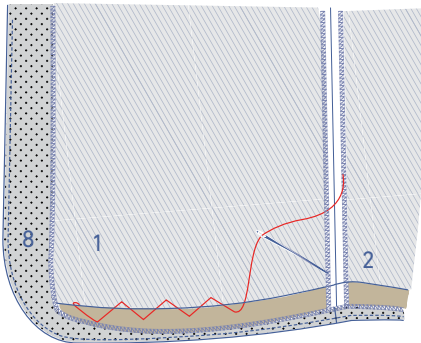


7

Pin and stitch the sleeve cap to the armhole, matching the corresponding notches. The single sleeve notch matches the single front notch, the double sleeve notch lines up with the double notch on the back. The top single sleeve notch matches the shoulder. Distribute the 'excess' fabric between the notches.



Overlock the raw edges together.

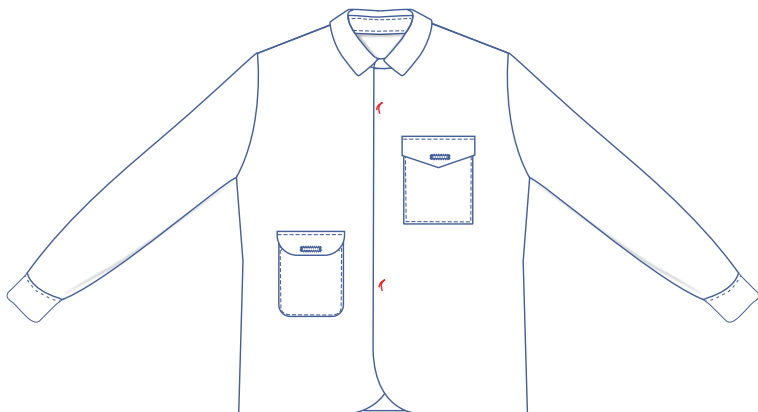


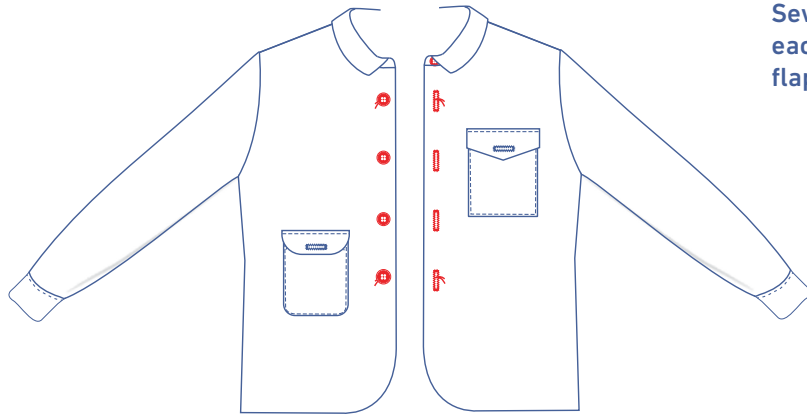
8

Sew the facing in place.

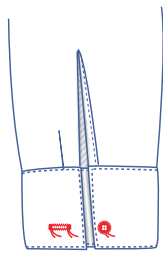
9

Make vertical button holes on the front. The top and bottom of the buttonhole are marked on the pattern. Divide the distance equally for the other button holes.

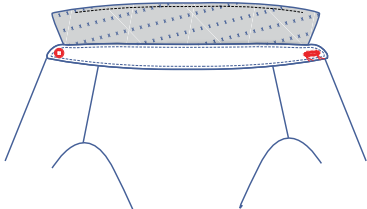




Sew the buttons on at the indicated places. Sew a button on each of the pockets at the front. (These match up with the flaps' button holes)



Make horizontal buttonholes in the cuffs at the places marked and sew on the corresponding button.



On the right-hand side of the collar band, make a horizontal buttonhole halfway up and 1 cm away from the edge. Sew on the corresponding button.

#Harold

