

Norma by Fibre ⚡ood

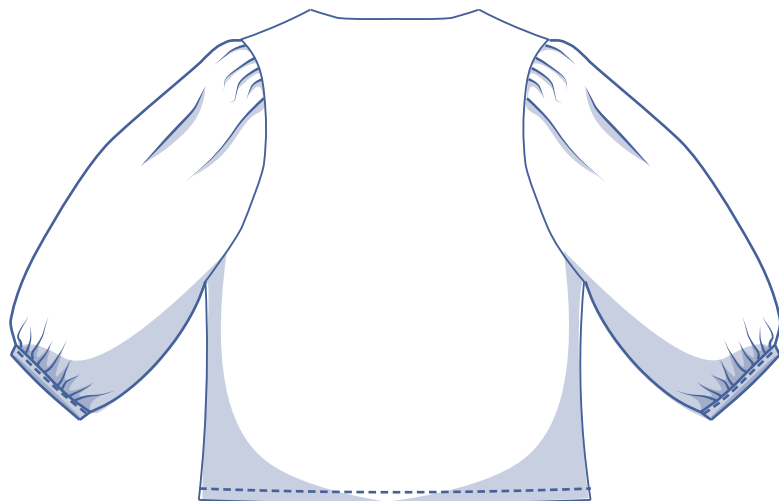


Norma by Fibre Mood



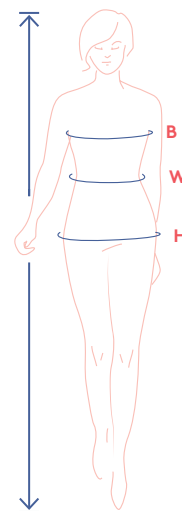
0 - 26

Sleeves that stand out are in! And Norma knows that being big can be better. The lavish three-quarter length balloon sleeves are full at the shoulders, have puffed wrists and gathered seams. This original short V-neck blouse effortlessly steals the show when paired with a high waisted skirt, jeans or trousers.



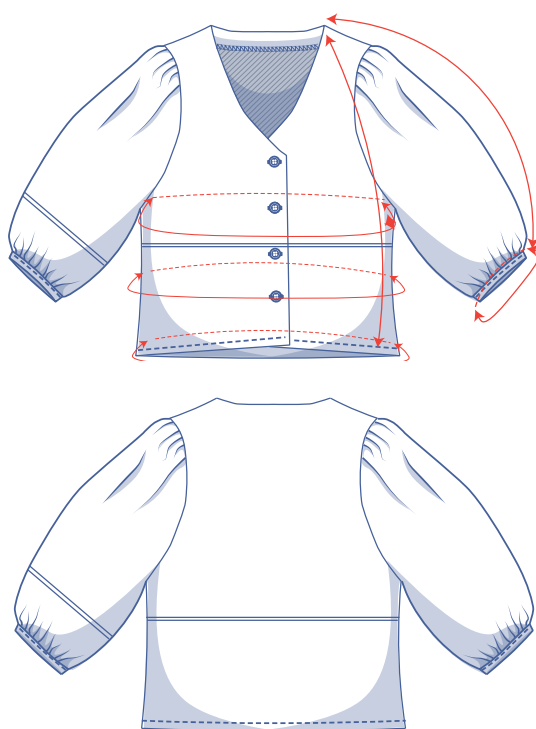
size chart (in inches)

size	0	2	4	6	8	10	12	14	16	18	20	22	24	26
body height	5'25"	5'38"	5'45"	5'48"	5'51"	5'54"	5'58"	5'61"	5'64"	5'64"	5'64"	5'64"	5'64"	5'64"
B (bust)	29.9	31.5	33.1	34.6	36.2	37.8	39.4	40.9	43.3	45.7	48	50.4	52.8	55.1
W (waist)	26	26.8	27.6	29.1	30.7	32.3	33.1	34.6	37.2	39.8	42.3	44.9	47.4	50
H (hip)	33.9	35.4	37	38.2	39.4	40.6	41.7	42.9	45.3	47.2	49.2	51.2	53.1	55.1



Choose your size based on your **bust measurement**. If your waist and hip measurements are wider than what's in the size chart, check the waist and hem measurements in the chart below to make sure there's still enough room or whether the pattern needs to be altered. It's easy to do. Just trace the pattern, and instead of tracing the line for the smaller size, trace the line for the larger size.

finished garment measurements (in inches)



This chart's measurements are the pattern measurements based on the fabric type and serve as a reference. Ease has been added to the width measurements (in addition to the exact body measurements) for a more comfortable fit. Norma is designed to have a loose cut. Depending on the preferred cut, you could possibly go a size smaller or larger than the size chosen.

Compare the stated lengths to the measured or desired lengths. **Lengthen** or **shorten** the blouse and/or the sleeves by cutting the pattern pieces at the indicated double lines. Then either increase the distance between the cut pieces by the desired amount (to lengthen), or overlap the pieces (to shorten). Make sure that the CF and CB lines and the side seams are always straight.



IMPORTANT

Adjust the amount of fabric to be used based on the alterations.

— shorten or lengthen the pattern here

size	0	2	4	6	8	10	12	14	16	18	20	22	24	26
length	21.1	21.2	21.3	21.4	21.5	21.6	21.7	21.8	22	22.2	22.4	22.6	22.8	23
sleeve length*	19.9	20.1	20.4	20.6	20.8	21	21.2	21.4	22	22.3	22.5	22.8	23	23.3
bust	34.4	36	37.6	39.2	40.8	42.4	43.9	45.5	47.9	50.3	52.7	55	57.4	59.8
waistline	31.8	33.4	35	36.4	37.8	39.3	40.7	42.1	44.6	46.8	49	51.2	53.4	55.6
hem circumference	33.9	35.5	37.1	38.2	39.4	40.6	41.8	43	45.3	47.3	49.3	51.2	53.2	55.2
cuff circumference	9.6	9.9	10.2	10.5	10.8	11.1	11.4	11.7	12	12.3	12.6	12.9	13.3	13.6

* Including the shoulder length and cuff.

supplies



- Thread
- Iron-on interfacing: max. 3/4 yd
- Buttons (Ø 7/16"): 4
- Fabric: see table

fabric		0	2	4	6	8	10	12	14	16	18	20	22	24	26
fabric width 43"	yd	1 ½	1 ½	2	2	2	2 ¼	2 ¼	2 ¼	2 ¼	2 ½	2 ½	2 ½	2 ½	2 ½
fabric width 45"	yd	1 ¼	1 ¼	1 ¼	1 ¼	1 ¼	1 ¼	1 ¼	1 ½	1 ½	1 ½	1 ½	2	2 ¼	2 ¼

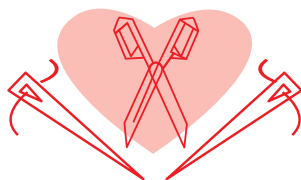
The corresponding fabric layout can be found on page 6 of these sewing instructions.

fabric advice



All kinds of fabrics work, but it goes without saying that your statement sleeves will stand out more in a stiffer fabric, such as poplin, raw silk, nylon, organza, etc. Also, organza blouses worn with a spaghetti strap top underneath are a huge trend right now. Would you still prefer a lighter fabric? You can turn the Norma into something a little flowier and less 'big' by choosing a cotton voile, muslin or a thin viscose.

Proud to be #Sewista



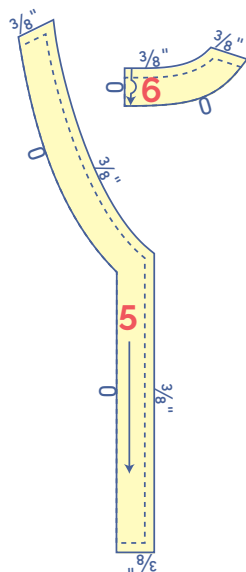
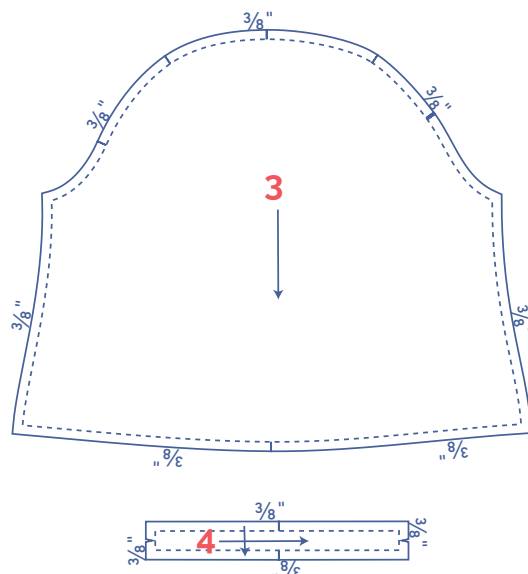
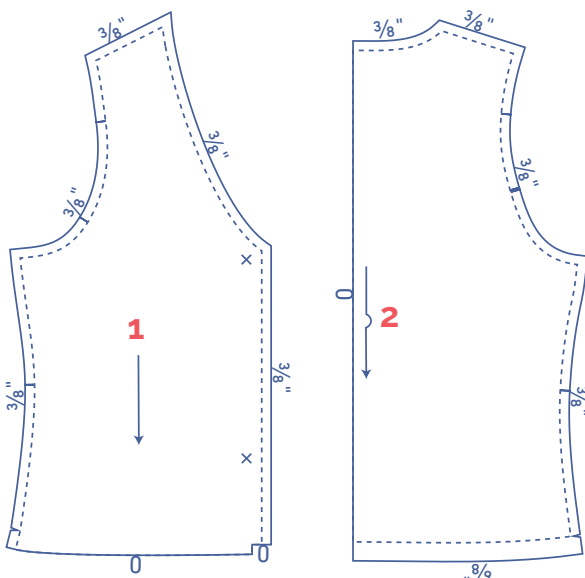
pattern pieces & seam allowances (in inches)



To sew the garment as described in the instructions, you must draw the illustrated seam allowances around the paper pattern pieces before cutting them out.

1. front: 2x
2. back: 1x on fabric fold
3. sleeve: 2x
4. cuff: 2x
5. facing front: 2x
6. facing back: 1x on fabric fold

IMPORTANT

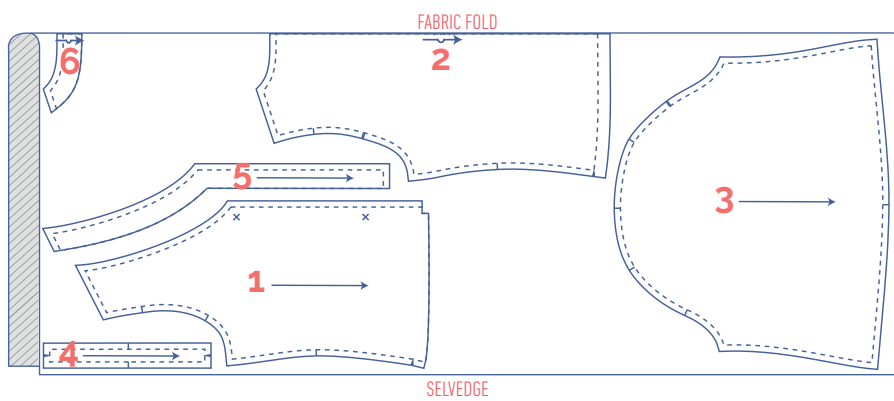
The pieces highlighted in light yellow have iron-on interfacing attached to the wrong side.



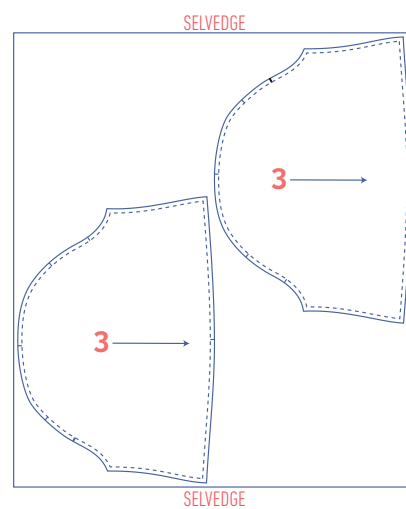
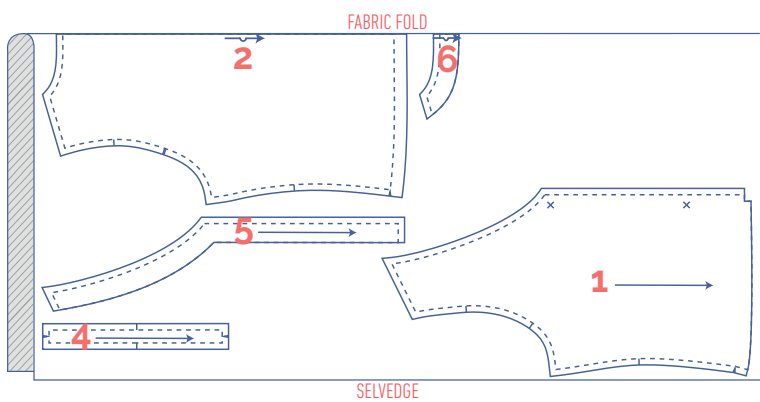
?	material type
	fabric
	iron-on interfacing

fabric layout – solid fabrics
fabric width 43"

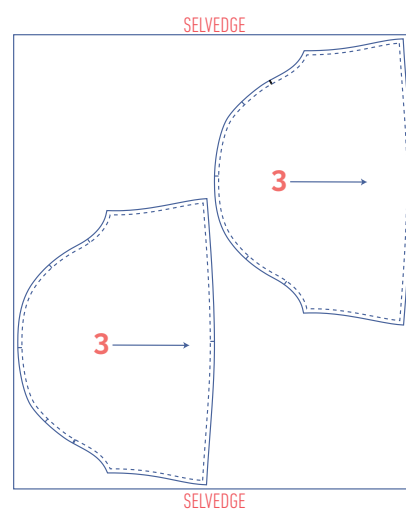
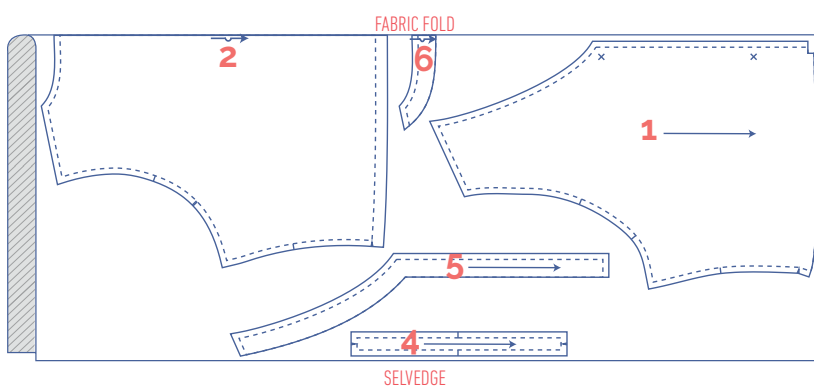
0 - 2



4 - 8



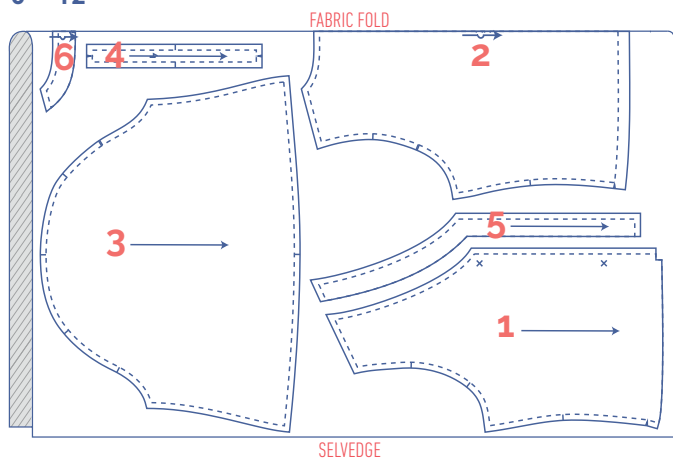
10 - 26



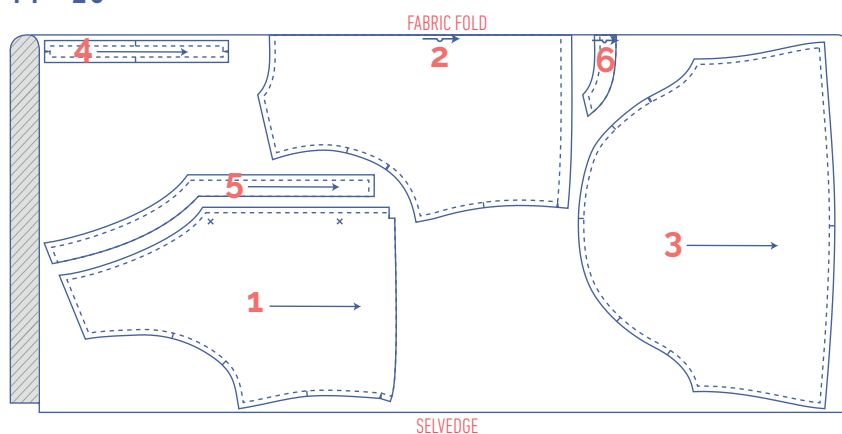
fabric layout – solid fabrics

fabric width 55"

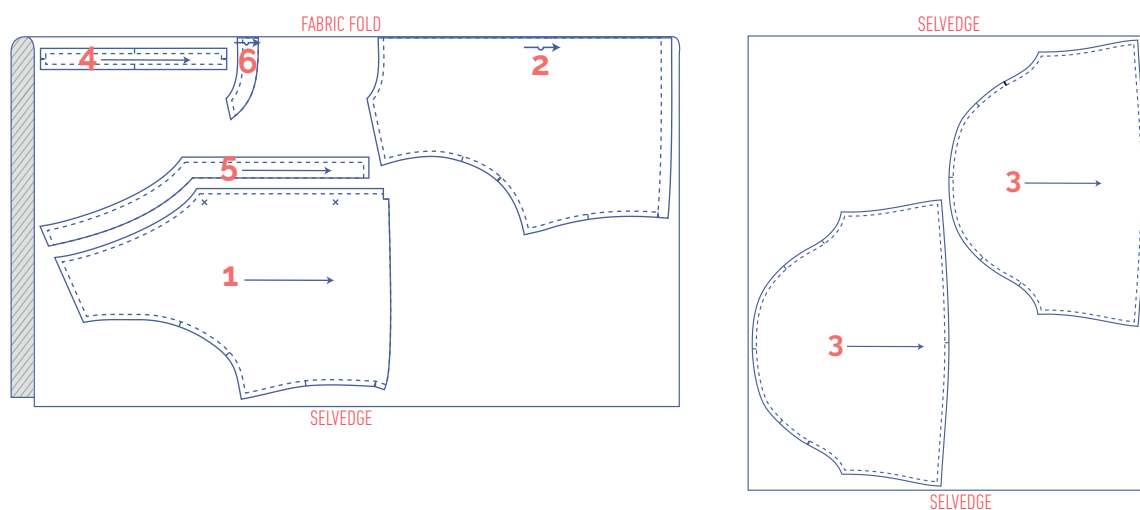
0 - 12



14 - 20



22 - 26



marking pattern pieces

	notch the pattern paper and fabric at the following points		mark the following points using marking thread
	single notch		centre point
	double notch		snap/button
	V notch		buttonhole

sewing instructions



The method used to finish sewing the garment depends on the fabric used. The pieces are always sewn together with the right sides of the fabric facing together, unless stated otherwise.

F front

B back

RF right front

LF left front



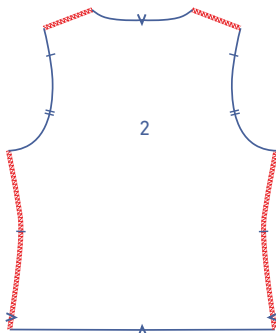
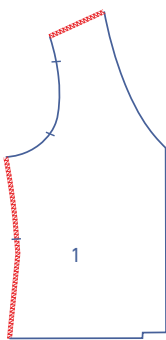
right side



wrong side

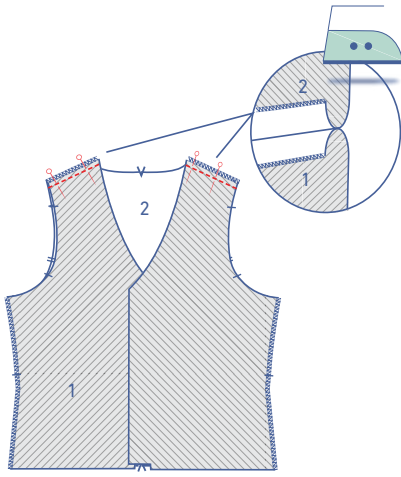


iron-on interfacing

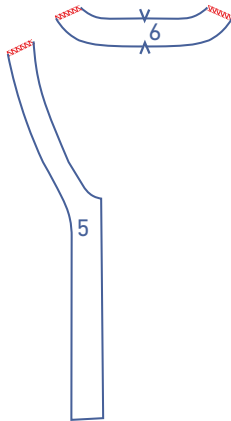


1

Finish the shoulder and side seams of the front (1) and the back (2) with overlock stitching.

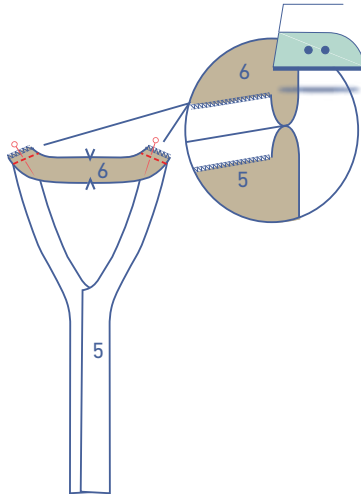


Pin and sew the shoulder seams and press open the seam allowance.

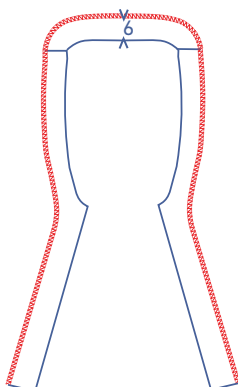


2

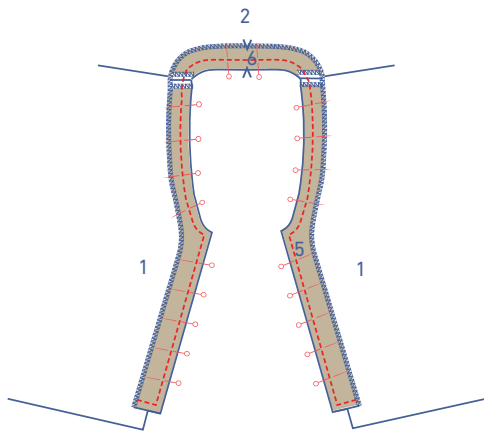
Finish the shoulder seams of the front facing (5) and back facing (6) with overlock stitching.



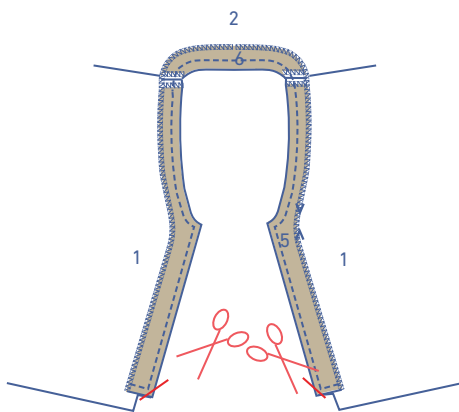
Pin and sew the shoulder seams and press the seam allowance open.



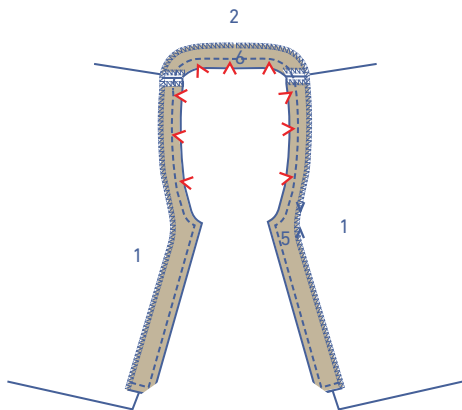
Finish the outside curve of the facing with overlock stitching.



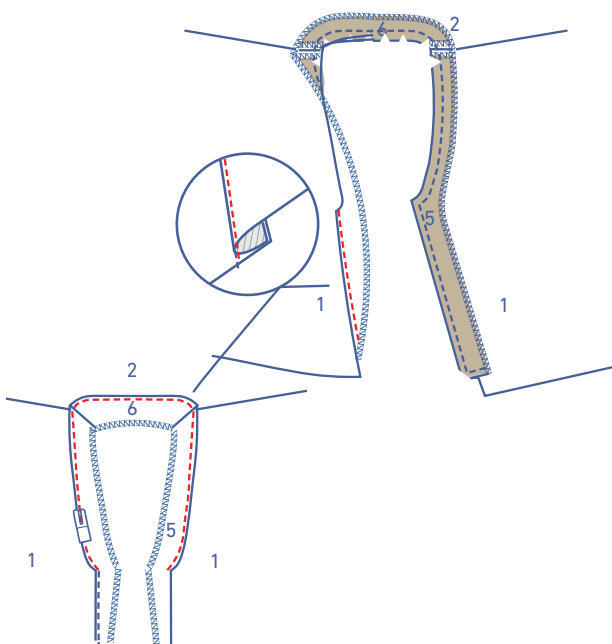
Pin and sew the facing to the neckline.



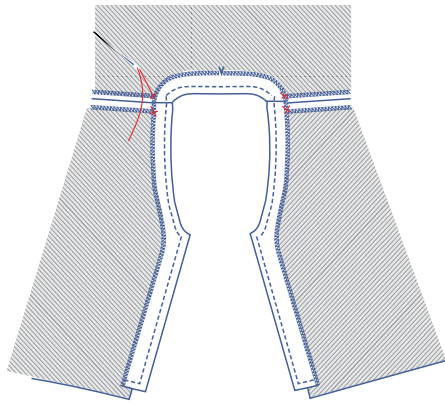
Trim the seam allowance in the corners.



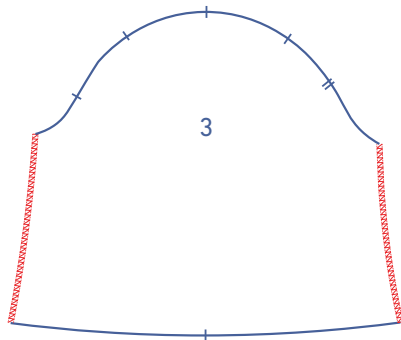
Notch the curved areas of the neckline to enable it to lie flat.



Fold the facing and the underlying seam allowance over and sew right next to the seam through all layers (= facing + underlying seam allowance) as far as possible.

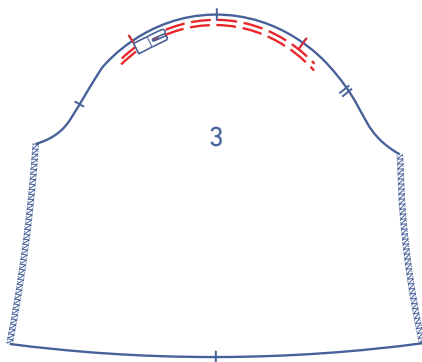


Fold the facing to the wrong side of the garment. Hand sew the facing into place along the shoulder seams with a few stitches.

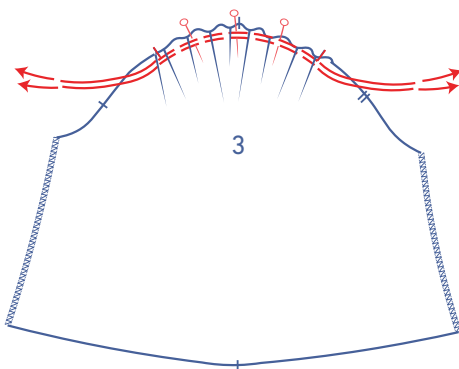


3

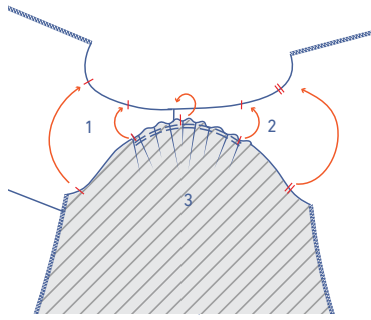
Finish the sides of the sleeve with overlock stitching.



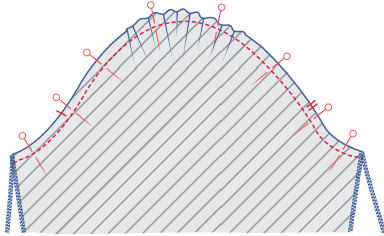
Using a long stitch length and a low thread tension, sew 2 parallel rows of stitching on the top of the sleeve (3) within the seam allowance, always just slightly past the notches. Leave the thread tails long.



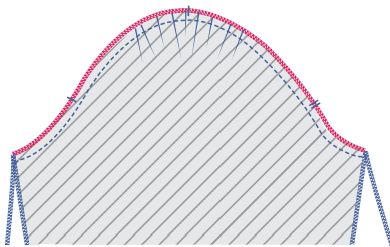
Carefully tug the ends of the threads to gather the fabric into ruffles. Pin the ruffles temporarily into place.



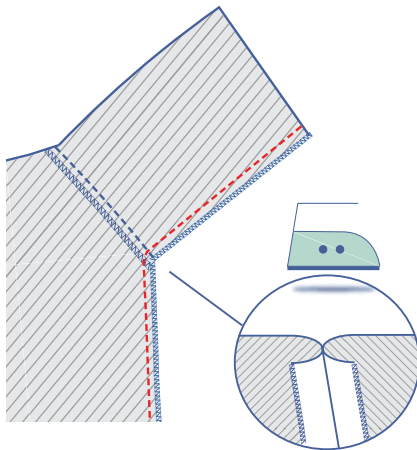
Pin and sew the top of the sleeve (= sleeve cap) to the armhole with the corresponding notches matching. The single notch marks the front, while the double notches mark the back. The single notch at the top should be perfectly aligned with the shoulder seam.



Distribute the ruffles evenly between the other single notches.



Finish the raw edges together using an overlock stitch.



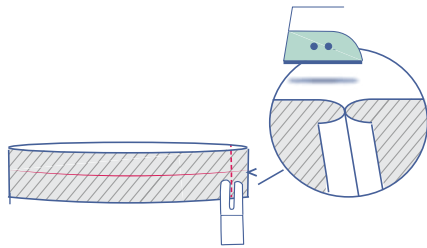
4

Pin and sew the side and underarm seams and press the seam allowance open.

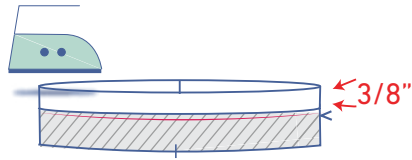


5

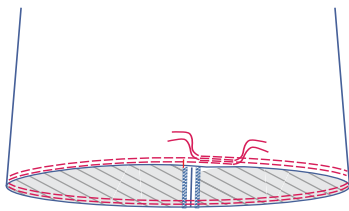
Press the cuff (4) in half lengthwise with the right side of the fabric facing outwards to create a fold line.



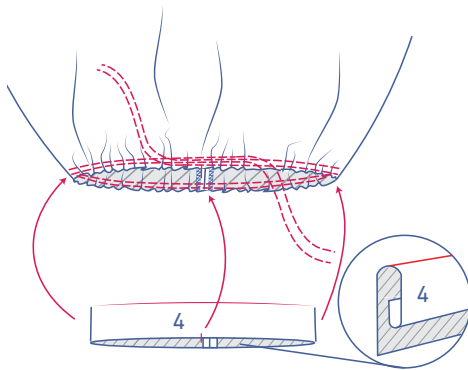
Press the cuff in half crosswise with the right side of the fabric facing inwards. Pin and sew the short side together. Press the seam allowance open.



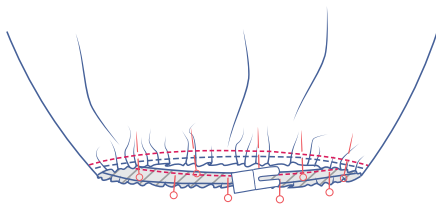
Press the ends of the cuff without a notch 3/8" onto the wrong side.



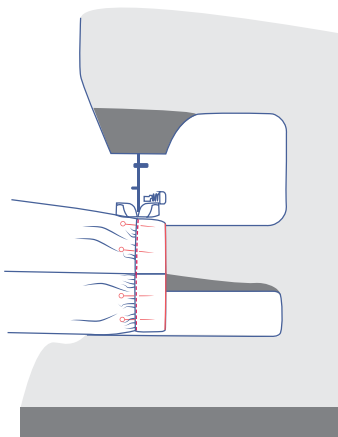
Now go back to the sleeve. Use a long stitch at a low thread tension to sew 2 parallel rows of stitching at the bottom of the sleeve within the seam allowance. Leave the thread tails long.



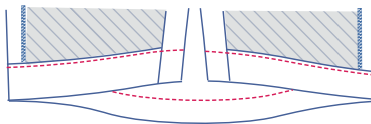
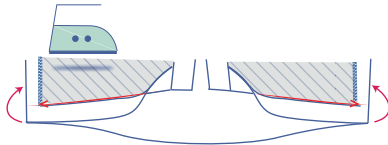
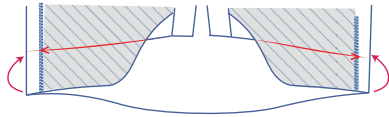
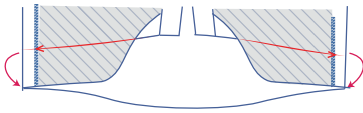
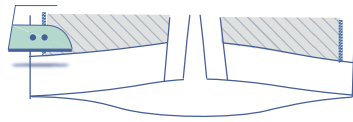
Carefully tug the ends of the gathering threads to gather the fabric into ruffles.



Slide the cuff into the sleeve and pin the unpressed raw edge of the cuff to the bottom of the sleeve along the inside (= the wrong side). Distribute the ruffles evenly. Sew into place. Remove the gathering threads when you're done.



Turn the cuff onto the right side of the sleeve. Place the fold line directly over the stitching. Sew into place right next to the edge.



6

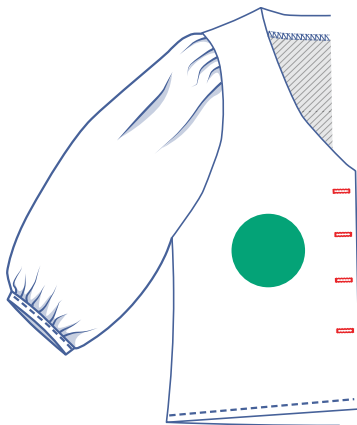
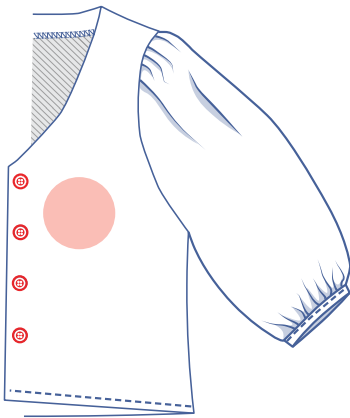
Press the hem allowance over at the V notches and open back out.

Fold the raw edge to the pressed fold line and then fold up again.

Sew into place right next to the edge.

7

Sew the buttons on where indicated. The top and bottom button are marked on the pattern. Divide the distance equally to determine the position of the other buttons.



Make the horizontal buttonholes based on the location of the buttons.

TIP

Ruffle a strip of tulle and sew it to the seam allowance of the sleeve at the shoulder to provide the fabric with more support and add volume.