

# Bonnie by Fibre ⚡ood



# Bonnie by Fibre Mood



4 - 30

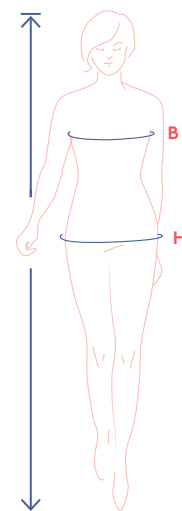
Everybody loves a sweet bonbon. So without further ado, meet Bonnie! It's a top that while super simple, is full of stylish details. The sleeves have a touch of flair with box pleat cuffs. Do you prefer long or 3/4-length sleeves? Altering to make it the length you want is a snap. Find out how on [www.fibremood.com](http://www.fibremood.com). What else has Bonnie got in her bag of tricks? A slightly curved boat neckline, French darts, and an elegant opening at the back with a hook-and-eye closure. After all, details count for a lot. This pattern looks lovely in a solid, whether bright or pastel, but you also won't go wrong with a nice print.



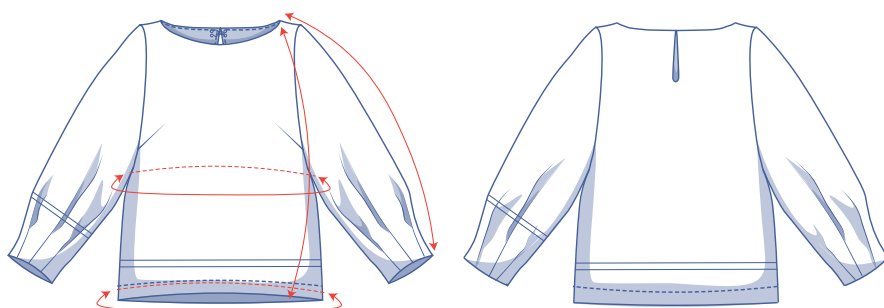
## size chart (in cm)

size	4	6	8	10	12	14	16	18	20	22	24	26	28	30
body height	160	164	166	167	168	169	170	171	172	172	172	172	172	172
B (bust)	76	80	84	88	92	96	100	104	110	116	122	128	134	140
H (hips)	86	90	94	97	100	103	106	109	115	120	125	130	135	140

Choose your size based on your bust measurement. If your hip measurements are wider than those in the size chart, check the hem circumference in the chart below to see if there's enough room or whether the pattern needs to be altered. It's easy to do. Simply trace the line of the one size instead of the other.



## pattern measurements (in cm)



— shorten or lengthen the pattern here

This chart's measurements are the pattern measurements based on the fabric type and serve as a reference. Ease has been added to the width measurements (in addition to the exact body measurements) for a more comfortable fit. Bonnie is designed to have a loose cut. Depending on the preferred cut, you could decide to go a size smaller or larger than the recommended size.

size	4	6	8	10	12	14	16	18	20	22	24	26	28	30
length	60	60.25	60.5	60.75	61	61.25	61.5	61.75	62.25	62.75	63.25	63.75	64.25	64.75
sleeve length*	61.5	61.75	62	62.5	62.75	63	63.5	63.75	64.25	64.75	65	65.5	66	66.5
bust	81.25	85	88.75	92.5	96.25	100	103.75	107.5	114.25	119.75	125.25	130.75	136.25	141.5
hem circumference	90	94	98	101	104	107	110	113	118	123	128	133	138	143

\* Including shoulder length.

Compare the stated lengths to the measured or desired lengths. Lengthen or shorten the top and/ or the sleeves by cutting the pattern pieces at the indicated double lines. Then either increase the distance between the cut pieces by the desired amount (to lengthen), or overlap the pieces (to shorten). Make sure that the CF and CB lines and the side seams are always straight.



### IMPORTANT

Adjust the amount of fabric to be used based on these alterations.

## supplies



- Thread
- Iron-on interfacing: max. 30 cm
- Hook-and-eye: 1
- Fabric: see table

fabric		4	6	8	10	12	14	16	18	20	22	24	26	28	30
fabric width 110 cm	cm	155	160	170	230	235	245	245	250	265	265	270	270	275	275
fabric width 140 cm	cm	150	150	150	150	150	155	155	155	155	155	215	215	215	220

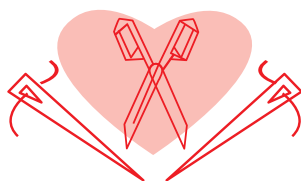
The corresponding fabric layout can be found on page 6 of these sewing instructions.

## fabric advice



To show off the unique sleeve design, a structured fabric like poplin is a great choice. Other options guaranteed to please? Chambray, Tencel, crepe, or satin. Even leather will look pretty as a picture.

# Proud to be #Sewista

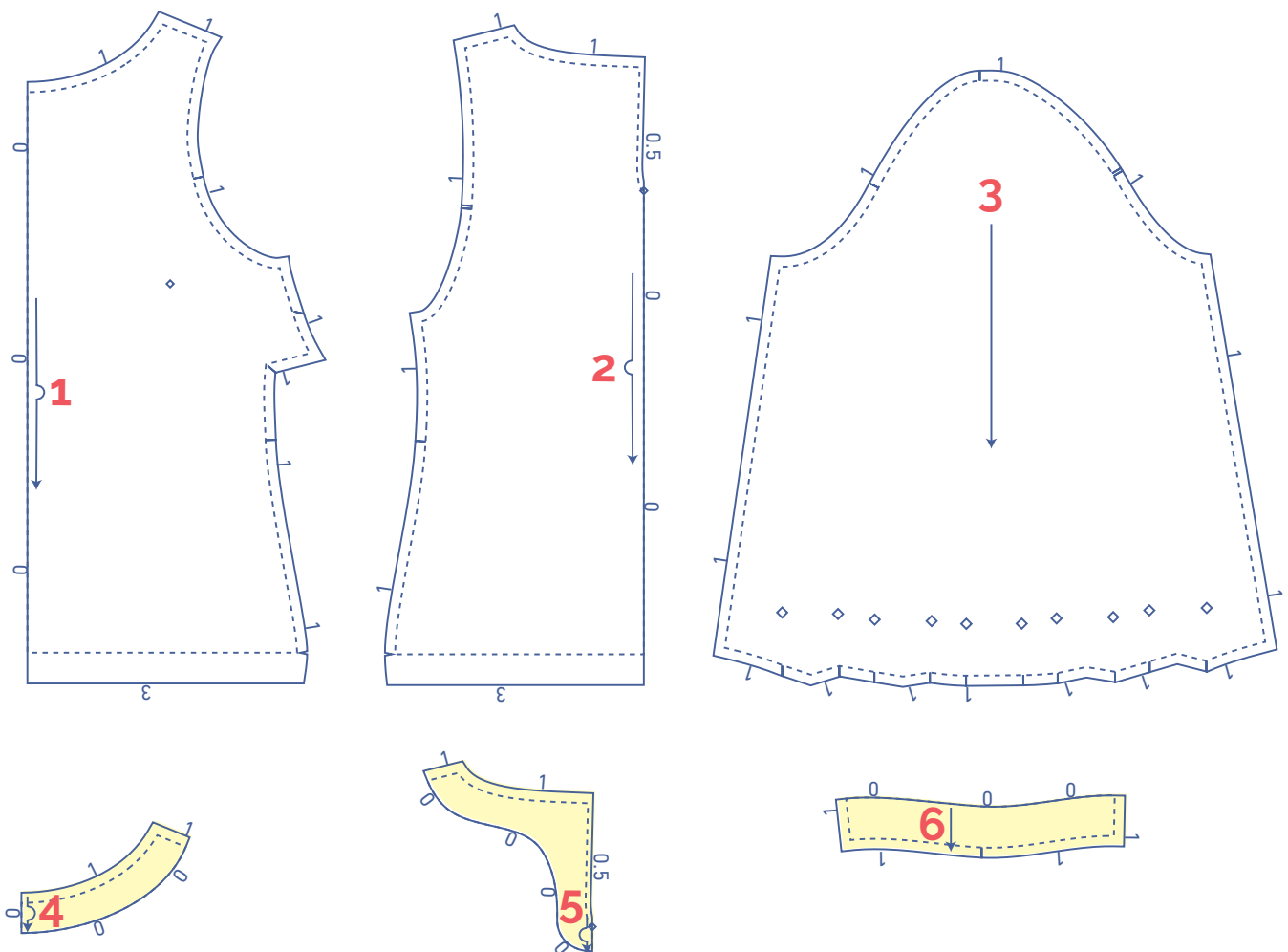





## pattern pieces & seam allowances (in cm)

To sew the garment as described in the instructions, draw the illustrated seam allowances around the paper pattern pieces before cutting them out. If you are using a PDF pattern, the pattern can be printed with or without seam allowance.

To find out more, watch the [video](#).

1. front: 1x on fabric fold
2. back: 1x on fabric fold
3. sleeve: 2x
4. neckline facing front: 1x on fabric fold
5. neckline facing back: 1x on fabric fold
6. sleeve hem facing: 2x



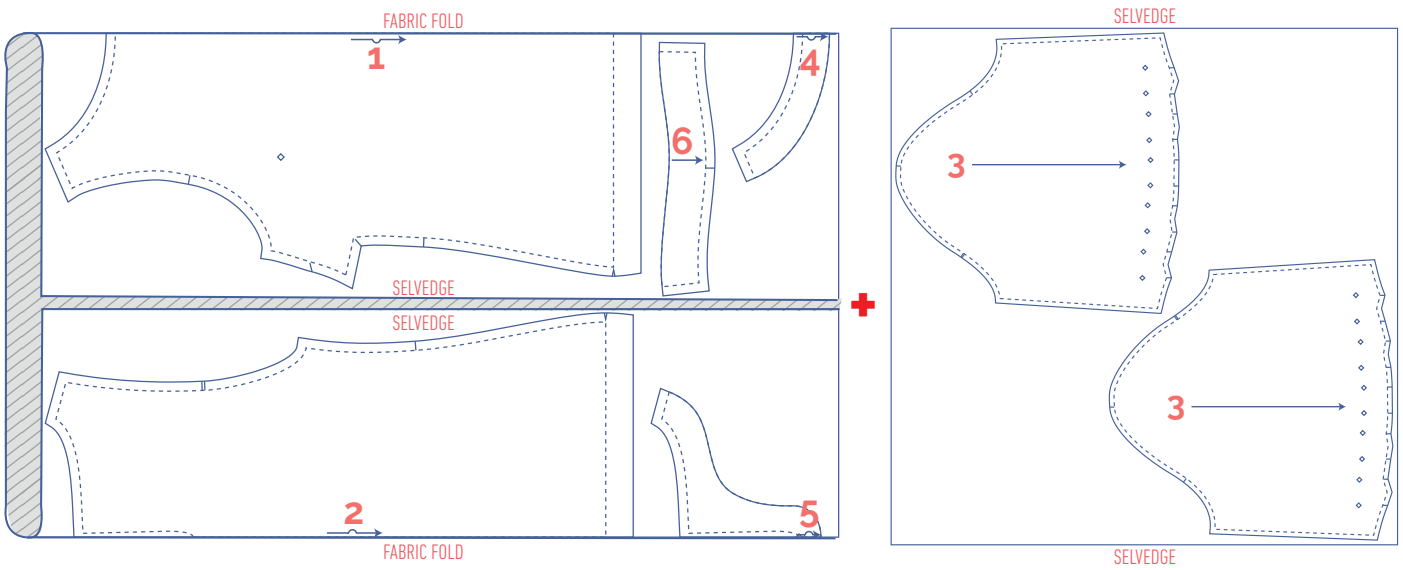
 material type	
 fabric	
 iron-on interfacing	

**IMPORTANT**

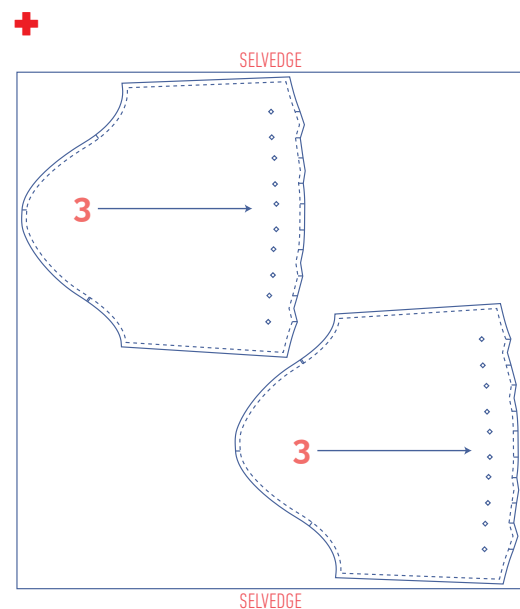
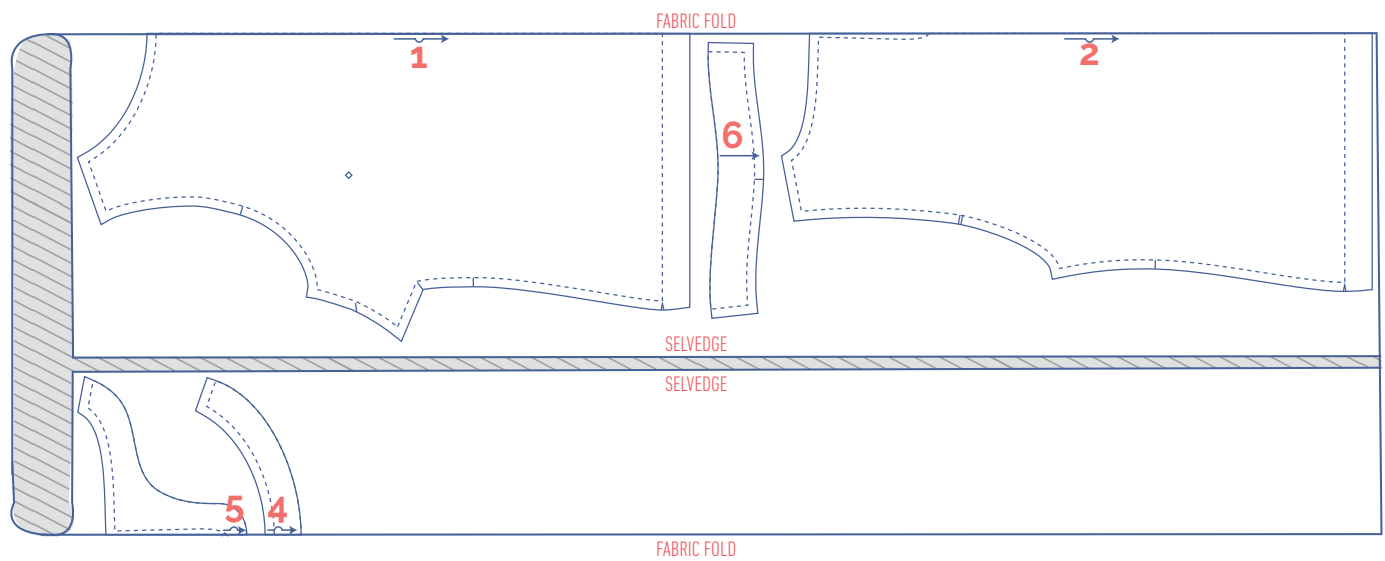
The pieces highlighted in light yellow have iron-on interfacing attached to the wrong side.

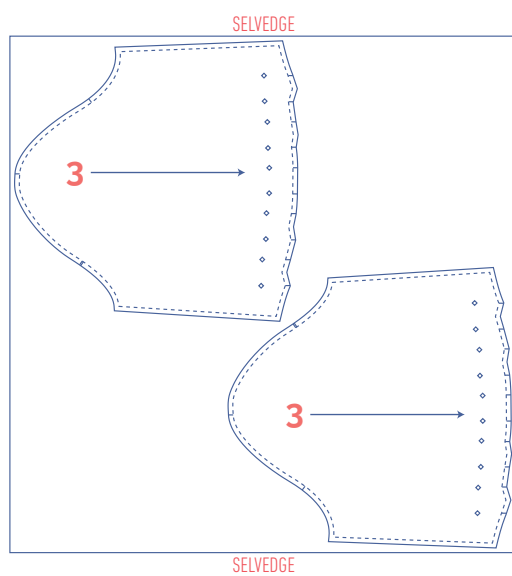
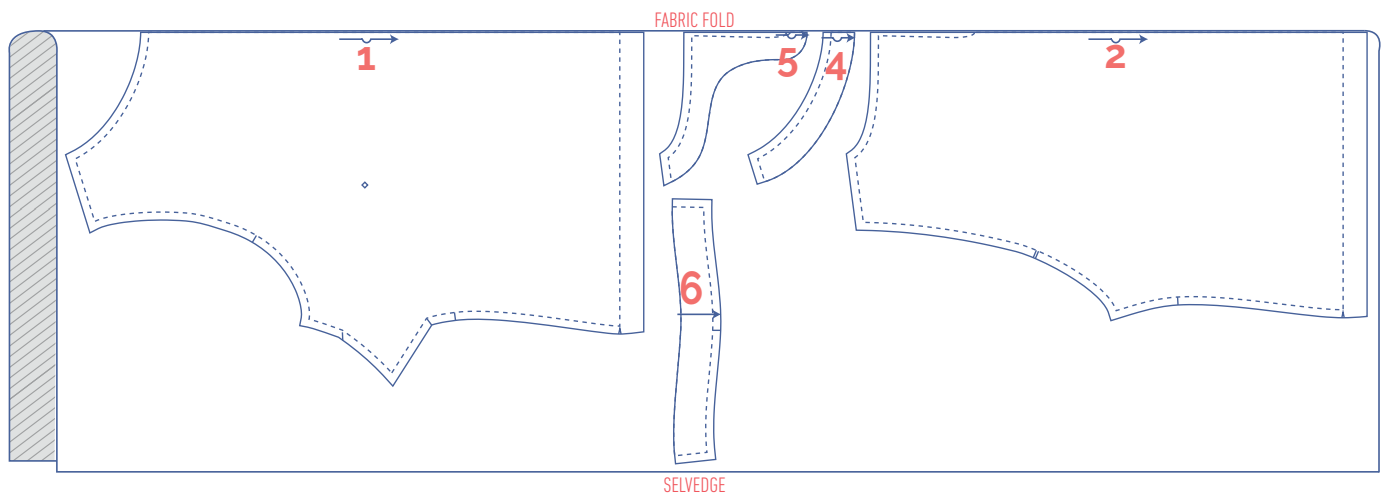
# fabric layout – solid fabrics fabric width 110 cm

4 - 8



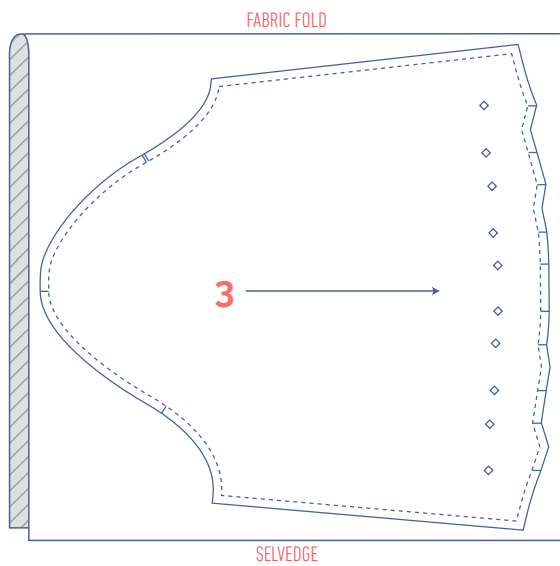
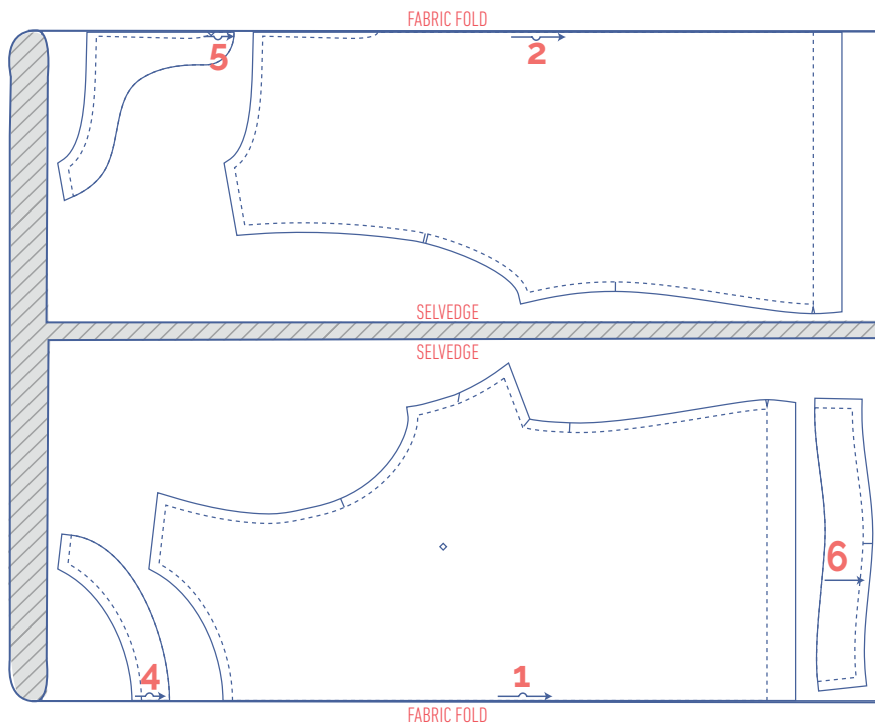
10 - 20



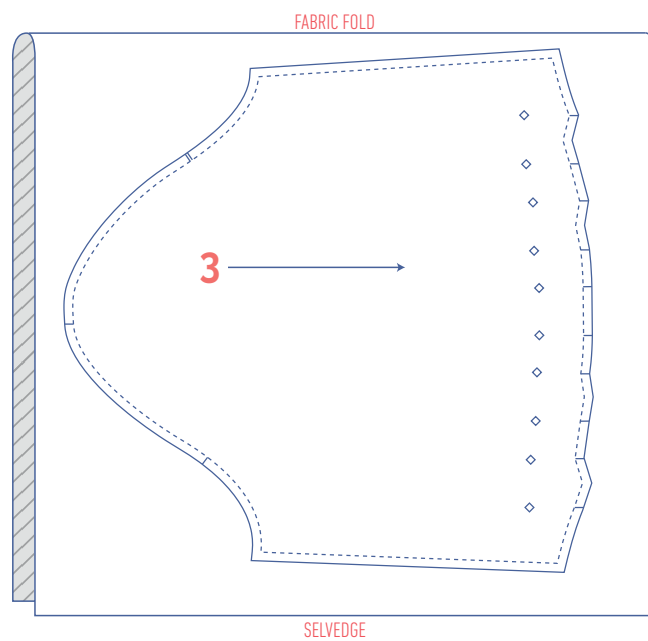
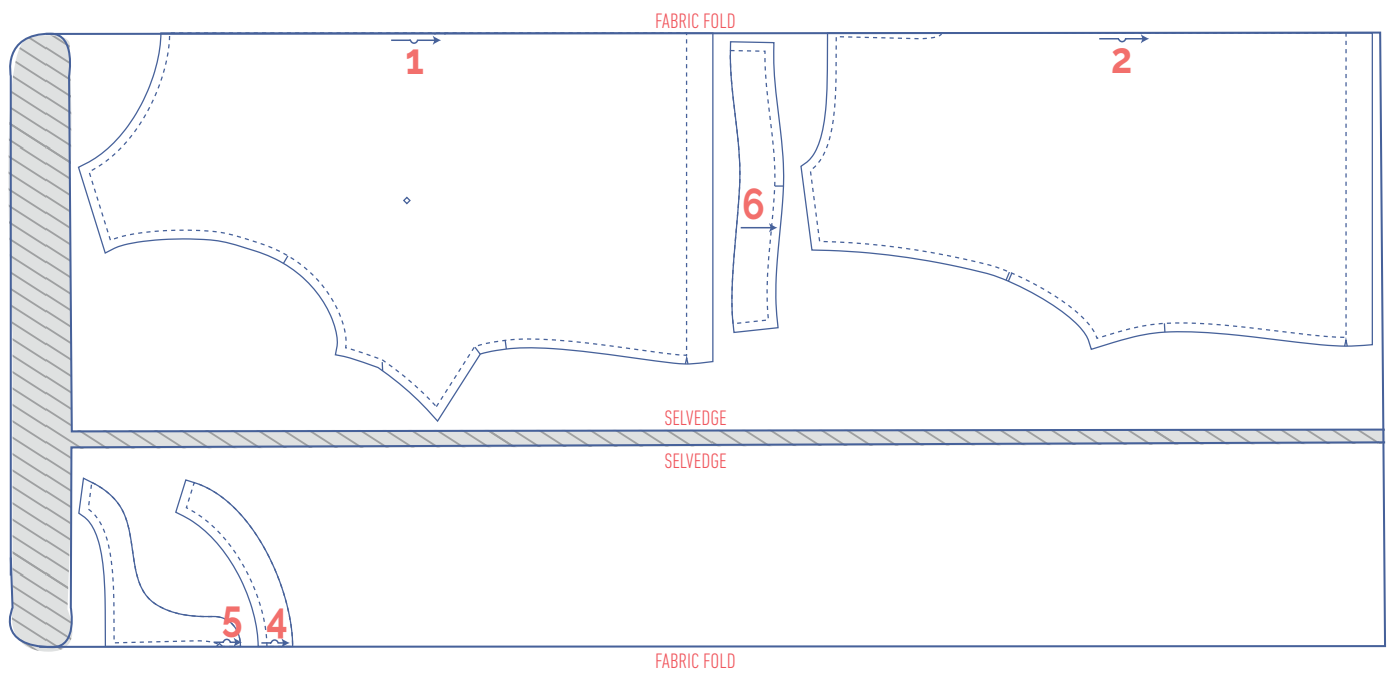


**fabric layout – solid fabrics**  
**fabric width 140 cm**







4 - 22







## marking pattern pieces

 notch the pattern paper and fabric at the following points	 mark the following points using marking thread
 single notch	 centre point
 double notch	
 V notch	

# sewing instructions



The method used to finish the seams depends on the fabric used.  
The pieces are always sewn together with the right sides of the fabric facing, unless stated otherwise.

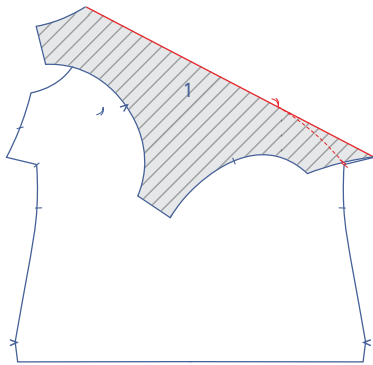
F front

B back

CB centre back

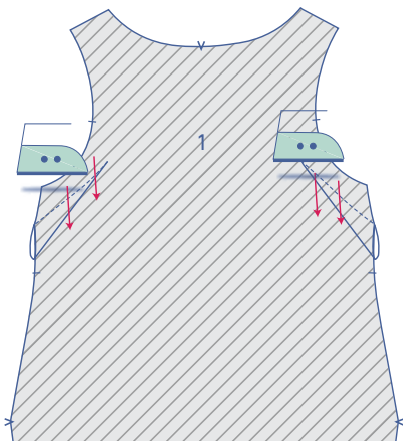
□ right side

▨ wrong side

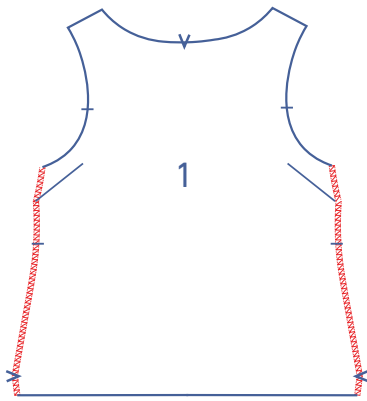


**1**

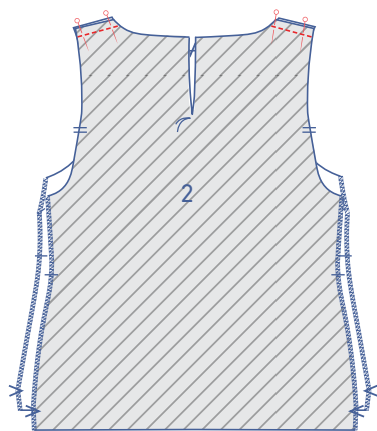
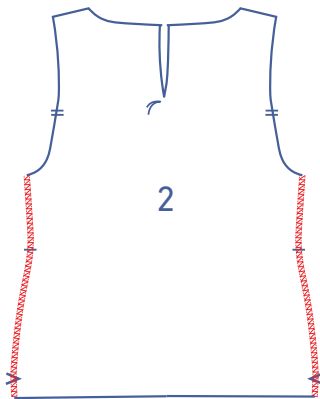
Fold the notches in the side seam of the front (1) together with the right sides of the fabric facing. Sew the dart in a slightly curved line from the notch towards the marking thread. Stitch up to and just past the marking thread, so that you've sewn past the fabric. Snip the threads and make a knot.



Turn the front over so that the wrong side is facing up. Press the dart down.

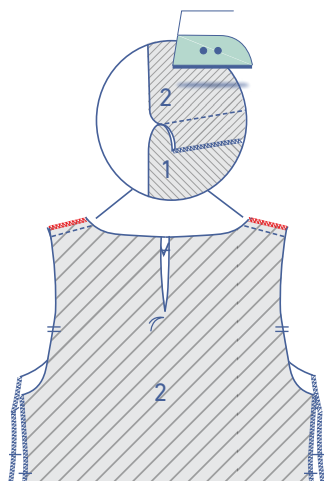


Finish the side seams of the front and back with overlock stitching.

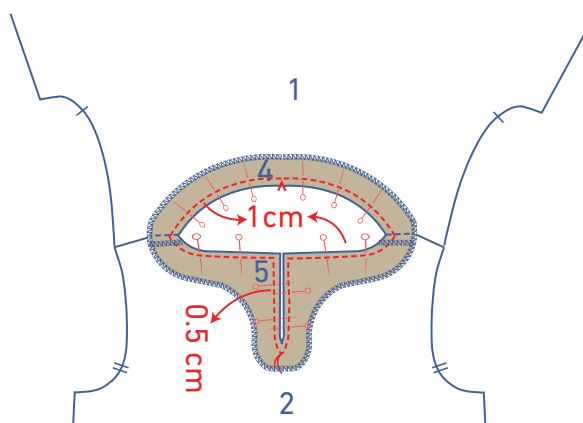
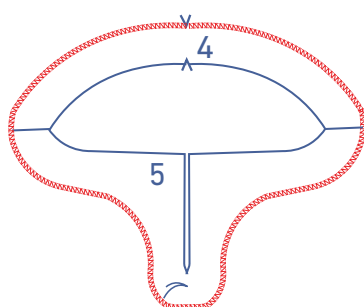
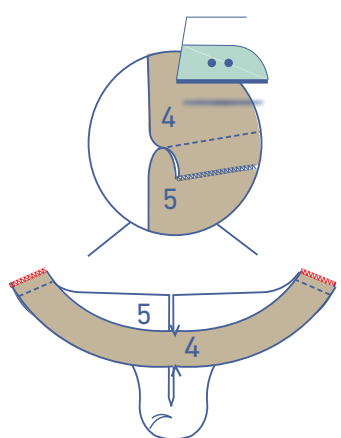
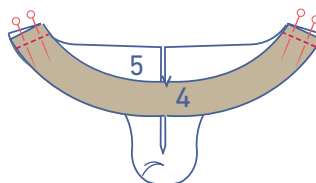
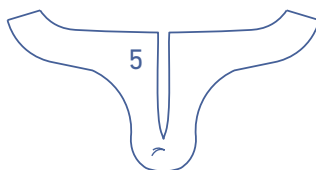
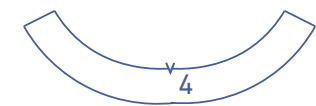


## 2

Pin and sew the shoulder seams of the front and back.



Finish the raw edges together with overlock stitching. Press the seam allowance towards the front.



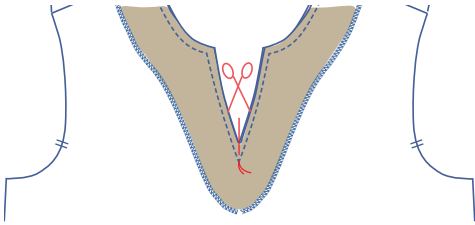
### 3

Pin and sew the shoulder seams of the neck facing front (4) and the neck facing back (5).

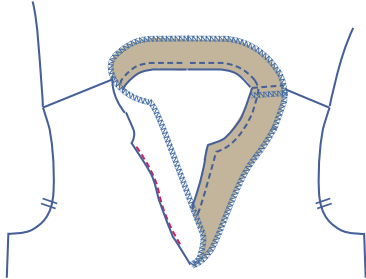
Finish the raw edges together with overlock stitching and press the seam allowance towards the neck facing back.

Finish the indicated raw edge with overlock stitching.

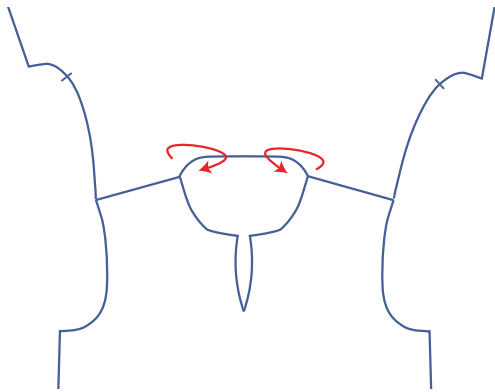
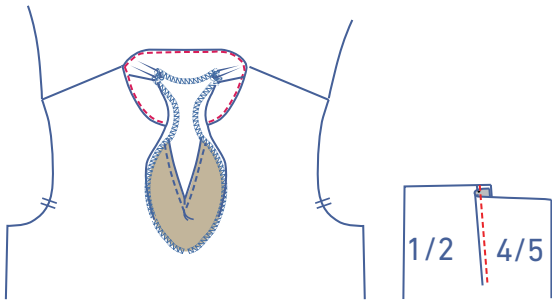
Pin and sew the neck facing to the neckline, making sure the seams and notches match (Don't forget! Sew the neckline at 1 cm, but the back opening at 0.5 cm). Stitch right up to the marking thread.



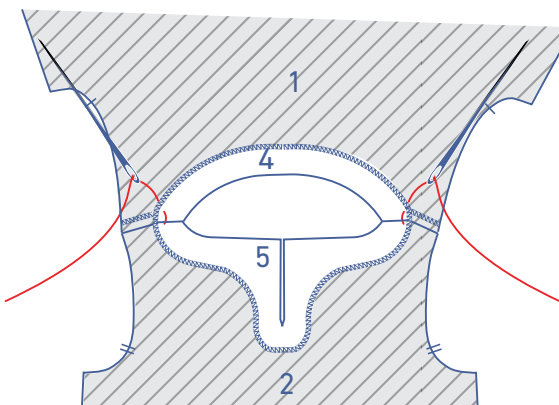
Cut the seam allowance until just before the marking thread.



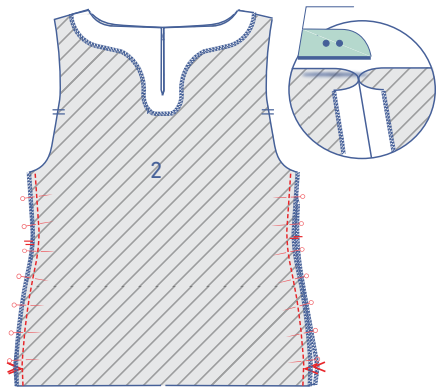
Fold the facing over and sew it to the seam allowance underneath as shown, right next to the seam.



Fold the facing over to the wrong side of the garment.

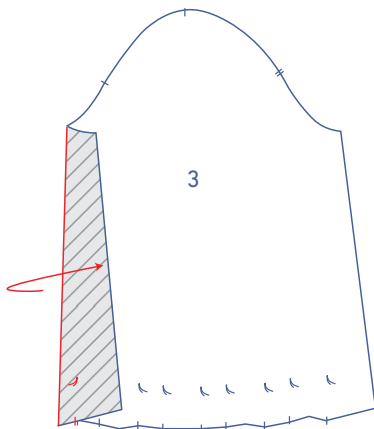


Secure facings in place by hand with a few stitches at the shoulder seams.



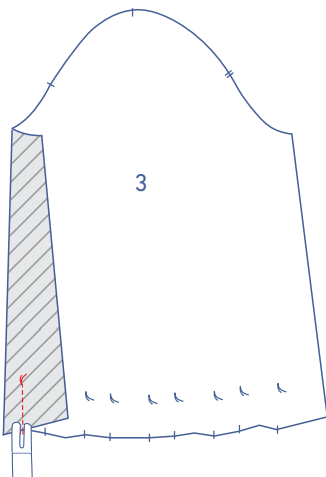
**4**

Pin and sew the side seams together. Press the seam allowance open.

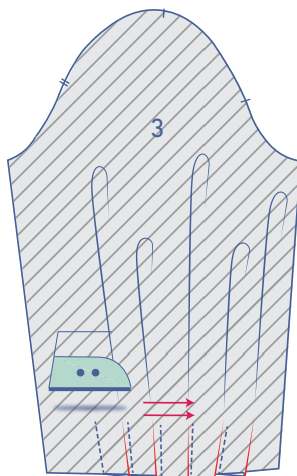


**5**

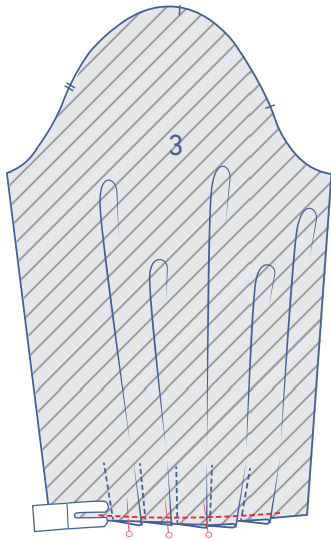
Make the pleats on the sleeve hem (3) by overlapping each of the marking threads and notches with the right side of the fabric facing inwards. There are 5 pleats on each sleeve, refer to the diagrams below.



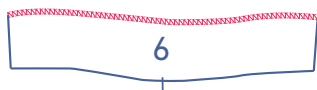
Sew the pleats vertically into place, from notch to marking thread.



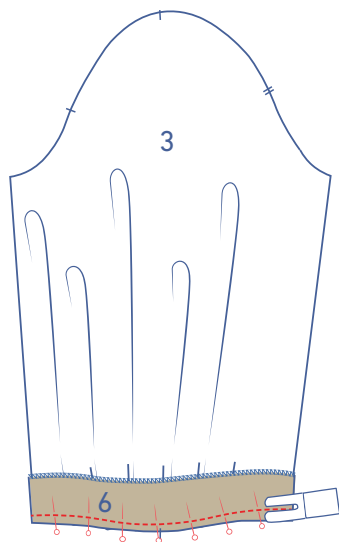
Turn the sleeve over so that the wrong side is facing up. Press the pleats towards the front (the side with the single notch).



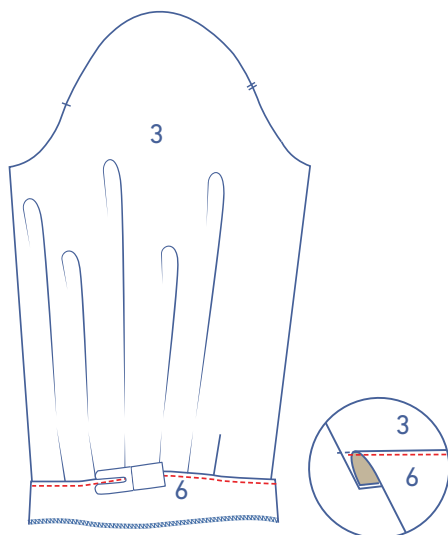
Pin and sew the pleats into place at presser foot width from the raw edge.



Finish the edge of the sleeve hem facing (6) without a notch with overlock stitching.

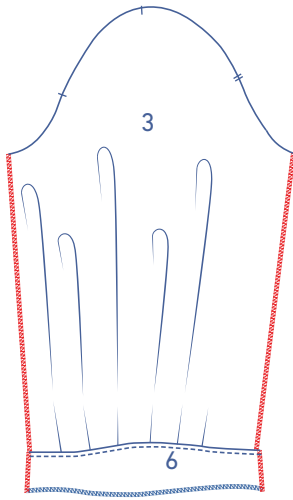


Pin and sew the sleeve hem facing to the sleeve hem, matching the notches.

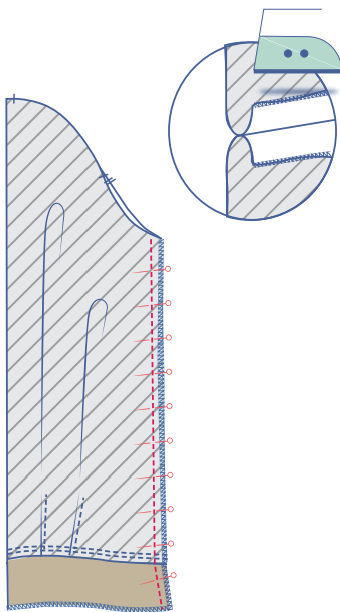


Fold the facing over and sew the facing + underlying seam allowance together right next to the seam.

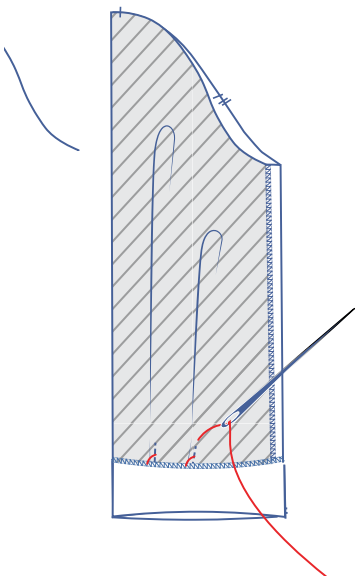
Finish the sides of the sleeve and facing (with the facing folded down) with overlock stitching.



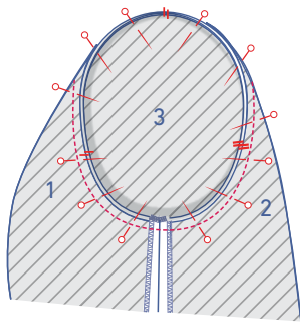
Pin and sew the underarm seam. Press the seam allowance open.



Fold the facing towards the wrong side of the sleeve and sew into place at the pleats by hand with just a few stitches.



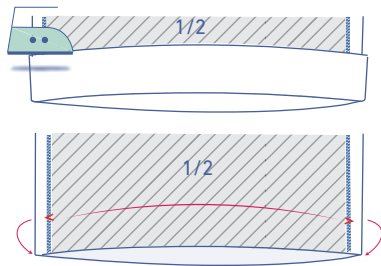
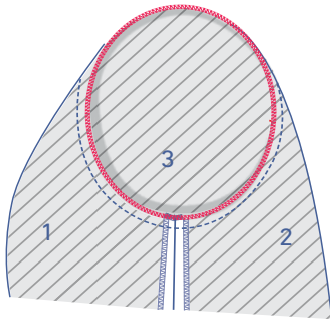




## 6

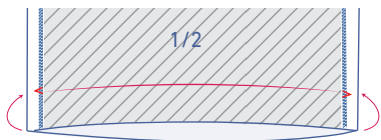
Pin the top of the sleeve (= the sleeve cap ) to the armhole with the notches matching. The single notch marks the front, while the double notch marks the back. The single notch at the top should be even with the shoulder seam. Distribute the excess fabric between the notches at the top. Sew into place.

Finish the raw edges together with overlock stitching.



## 7

Press the hem allowance up at the V notches and then open back out.



Fold the raw edge to the pressed fold line and then fold up again.



Edge stitch into place.



Sew the hook-and-eye closure on where indicated.

