

Bea by Fibre ⚡ood

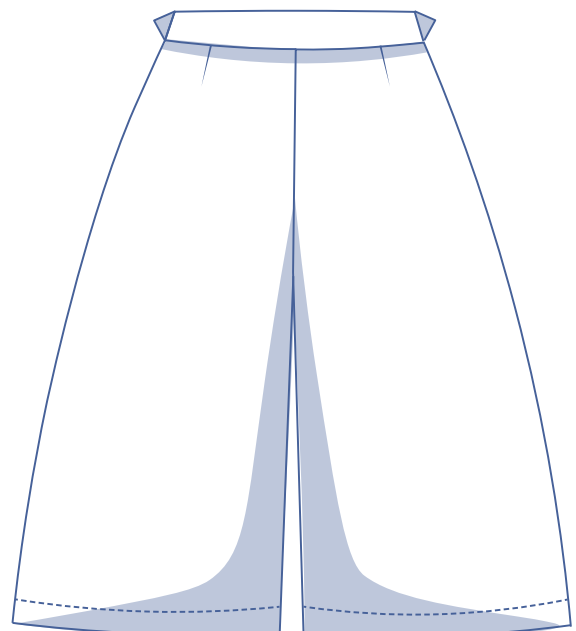
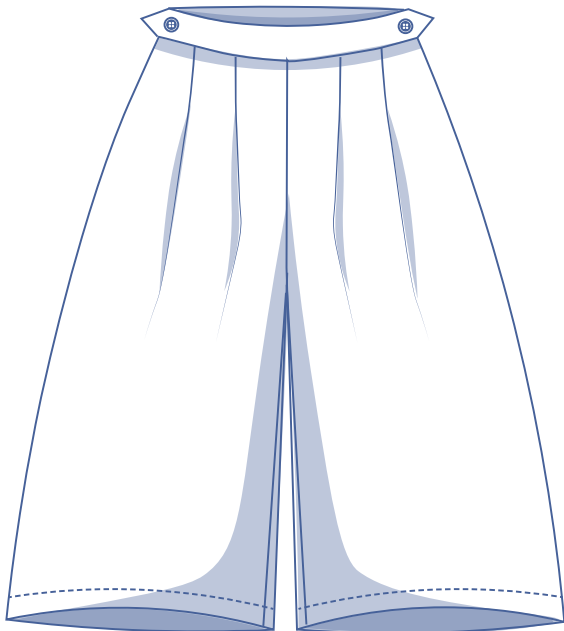


Bea by Fibre ood



4 - 30

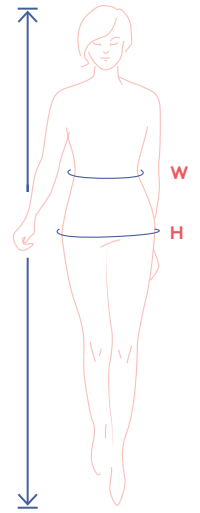
Is Bea a pair of trousers or is she a skirt? Either way, these wide-leg culottes are a gorgeous must have! How about making them in a check? That's trend #1. Are you after a more edgy look? go with leather - that's trend #2. Or you could make both! Bea is a straightforward pattern with buttons and snap closures, no fussing with zips. What else? Bea has two pleats at the front of each leg, darts in the back, and hidden side seam pockets. Not too wild about mid-length trousers? Lengthening them is a piece of cake. Find out how on www.fibremood.com. By the way, we think a pair of high boots will look rather elegant!



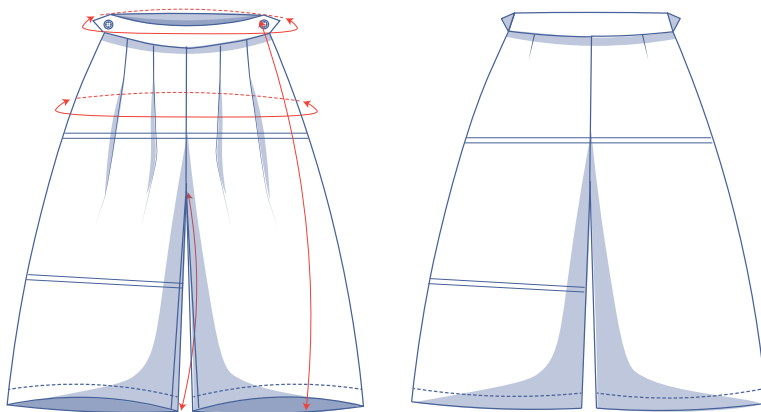
size chart (in cm)

size	4	6	8	10	12	14	16	18	20	22	24	26	28	30
body height	160	164	166	167	168	169	170	171	172	172	172	172	172	172
W (waist)	66	68	70	74	78	82	84	88	94.5	101	107.5	114	120.5	127
H (hips)	86	90	94	97	100	103	106	109	115	120	125	130	135	140

Choose your size based on your waistline measurement. If your hip measurements are wider than those in the size chart, check the hip measurements in the chart below to see if there's enough room or whether the pattern needs to be altered. It's easy to do. Simply trace the line of the one size instead of the other.



pattern measurements (in cm)



== shorten or lengthen the pattern here

This chart's measurements are the pattern measurements based on the fabric type and serve as a reference. Ease has been added to the width measurements (in addition to the exact body measurements) for a more comfortable fit. Bea is designed to have a fitted waist and be looser around the hips.

size	4	6	8	10	12	14	16	18	20	22	24	26	28	30
side length*	79.5	80	80.5	81	81.5	82	82.5	83	83.5	84	84.5	85	85.5	86
waistline measurement	66.25	68.25	70.25	74.25	78.25	82.25	84.25	88.25	94.75	101	107.5	114	120.25	126.75
hips	112.75	116.75	120.75	124	127	130.25	133.25	136.25	142.5	148	153.75	159.25	165	170.5
inseam length	46.5	46.5	46.5	46.5	46.5	46.5	46.5	46.5	46.5	46.5	46.5	46.5	46.5	46.5

* Including the waistband.

Compare the stated lengths to the measured or desired lengths. **Shorten** or **lengthen** the trouser legs and/or rise by cutting the pattern pieces at the indicated double lines. Then either increase the distance between the cut pieces by the desired amount (to lengthen) or overlap the pieces (to shorten). Make sure that the CF and CB lines and the side seams are always straight.



IMPORTANT

Adjust the amount of fabric to be used based on these alterations.

supplies



- Thread
- Iron-on interfacing: max. 40 cm
- Buttons (Ø 2 cm): 2
- Snaps (Ø 1.5 cm): 2
- Fabric: see table

fabric		4	6	8	10	12	14	16	18	20	22	24	26	28	30
fabric width 110 cm	cm	205	205	210	215	220	275	280	280	285	315	320	370	375	375
fabric width 140 cm	cm	165	165	165	170	170	200	200	205	205	205	210	210	210	210

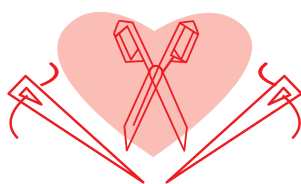
The corresponding fabric layout can be found on page 6 of these sewing instructions.

fabric advice



You can pull off the Bea in all kinds of gorgeous fabrics. We recommend making it in (faux) leather or woven fabric. More structured fabrics like denim, cotton, and corduroy are fantastic options. Fabric (woollen) with a fluid drape also yields nice results. Think gabardine, flannel, crepe, and more. And prints? Well, why not start with checks, tartan, or houndstooth?

Proud to be #Sewista



pattern pieces & seam allowances (in cm)

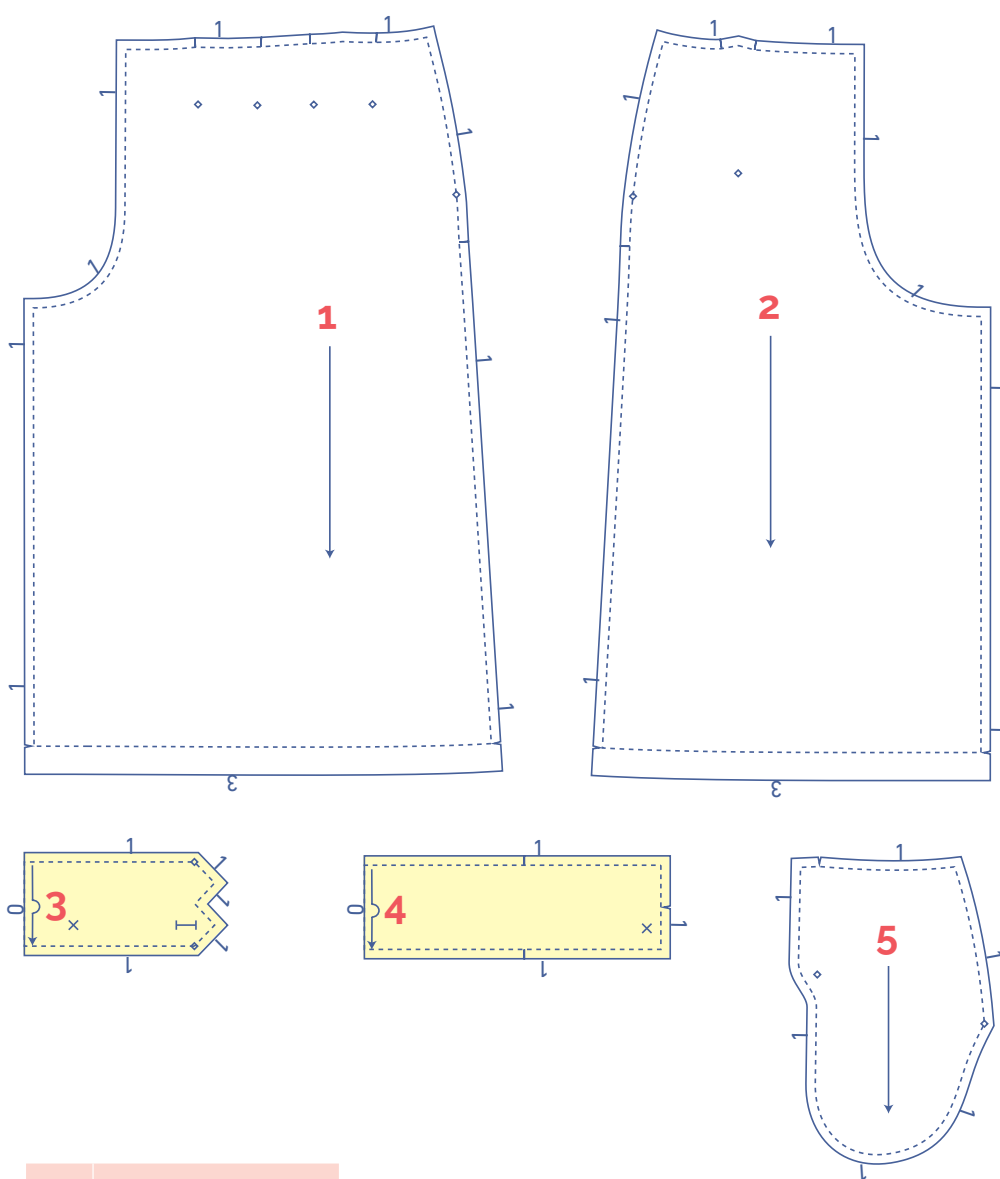
To sew the garment as described in the instructions, draw the illustrated seam allowances around the paper pattern pieces before cutting them out. If you are using a PDF pattern, the pattern can be printed with or without seam allowance.



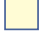
To find out more, watch the [video](#).

1. front: 2x
2. back: 2x
3. waistband front: 1x on fabric fold
4. waistband back: 1x on fabric fold
5. pocket: 4x

IMPORTANT

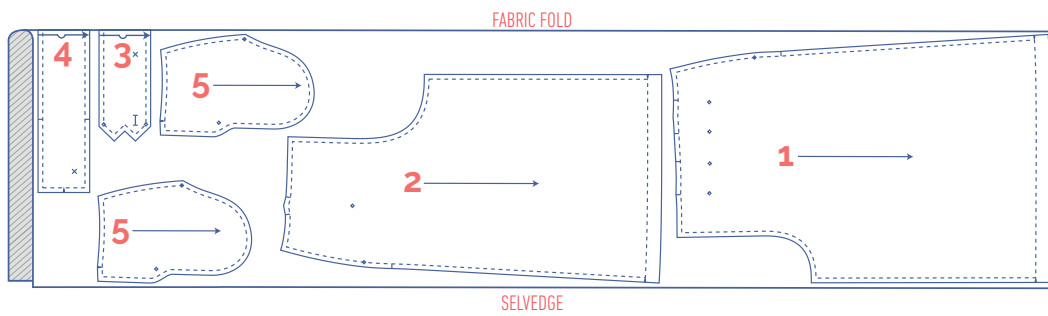
The pieces highlighted in light yellow have iron-on interfacing attached to the wrong side.



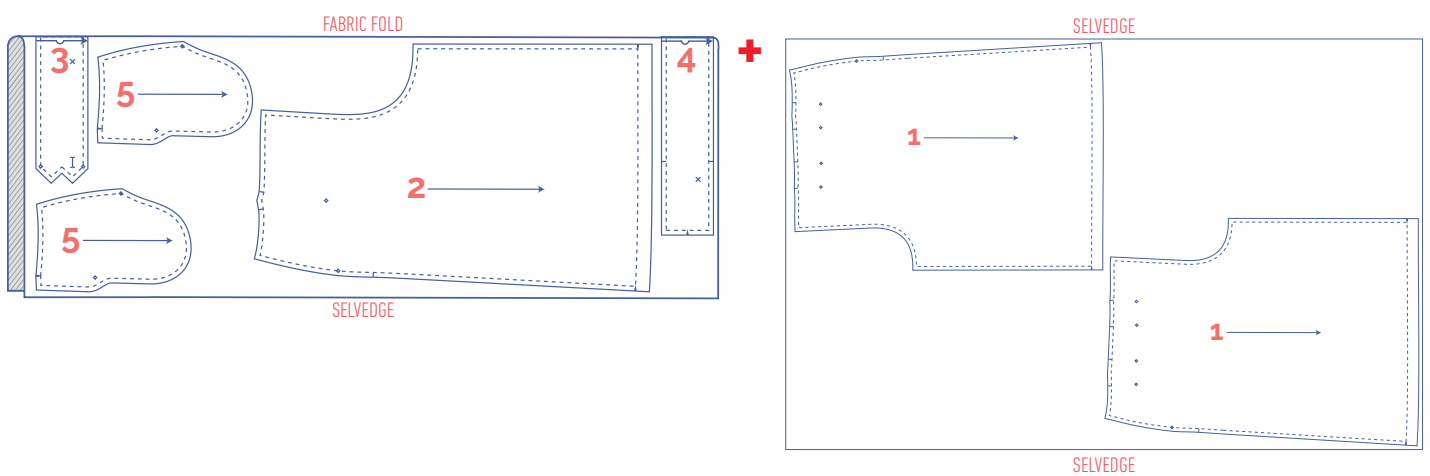
 material type	
 fabric	
 iron-on interfacing	

fabric layout – solid fabrics
fabric width 110 cm

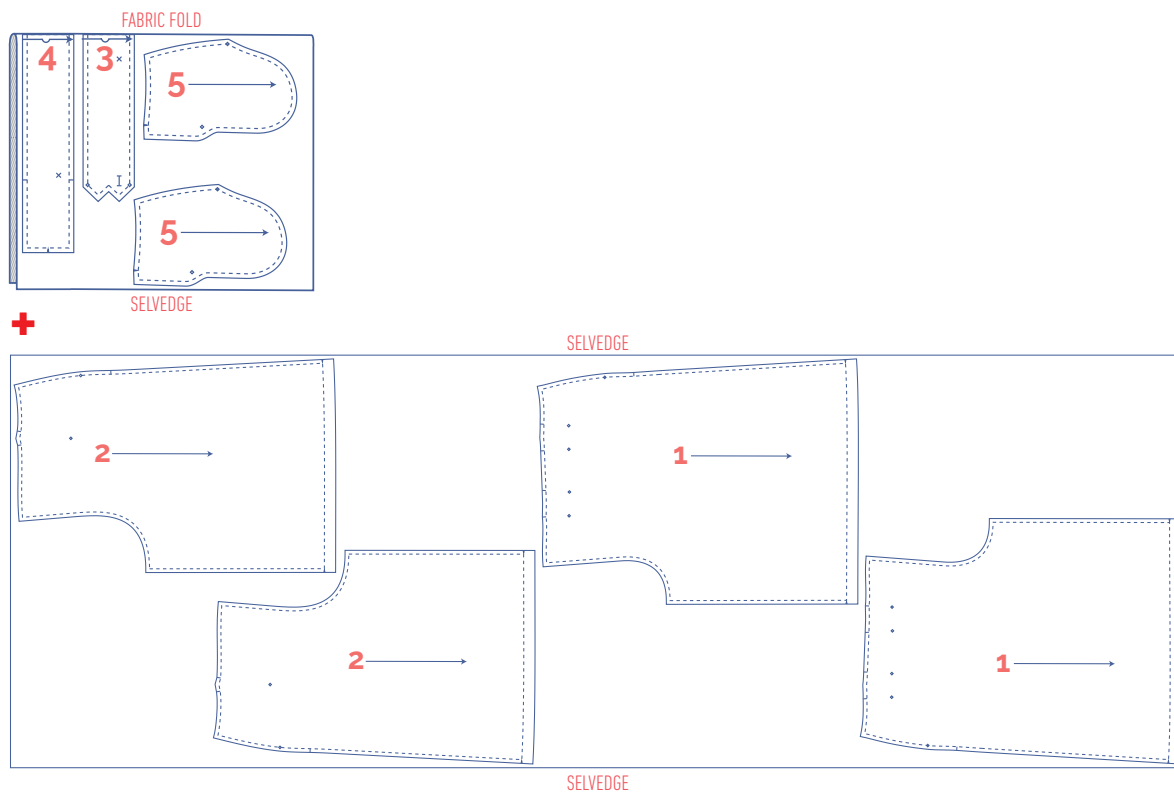
4 - 12



14 - 24



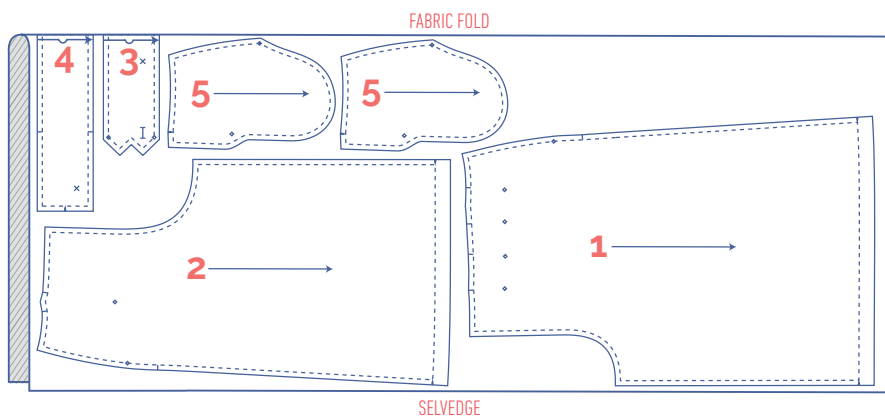
26 - 30



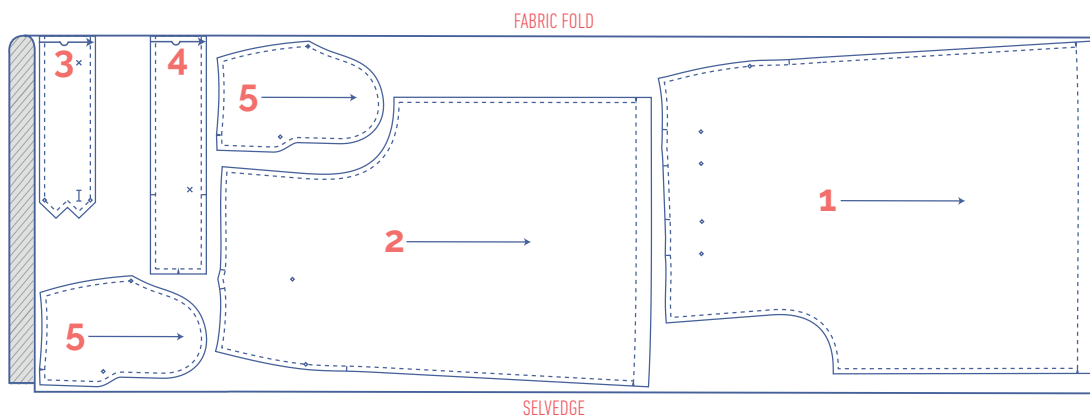
fabric layout – solid fabrics

fabric width 140 cm









4 - 12



14 - 30



marking pattern pieces

 notch the pattern paper and fabric at the following points	 mark the following points using marking thread
 single notch	 centre point
 double notch	 snap/button
 V notch	 buttonhole

sewing instructions



The method used to finish the seams depends on the fabric used.
The pieces are always sewn together with the right sides of the fabric facing, unless stated otherwise.

F front

B back

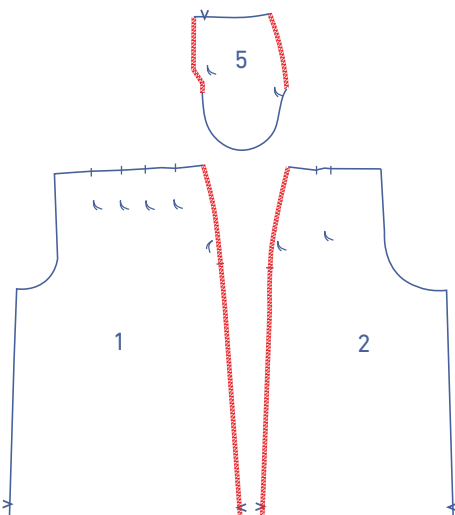
CF centre front

CB centre back

 right side

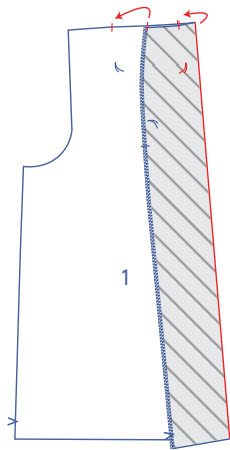
 wrong side

 iron-on interfacing



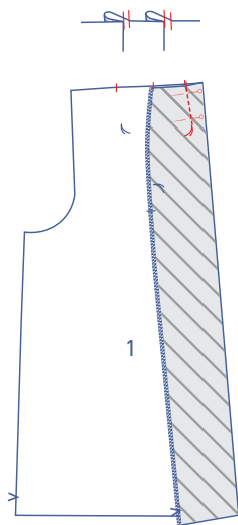
1

Finish the side seams of the front (1), back (2), and the indicated edges of the pocket (5) with overlock stitching.

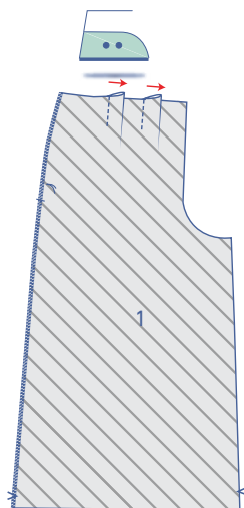


Make the front pleats. Fold the side seam inwards so that you match the two notches closest to the side seam, and the marking threads are on top of each other.

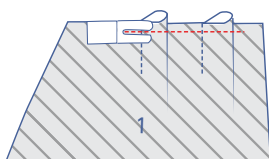
Make a second pleat the same way, matching 2 notches furthest away from the side seam.



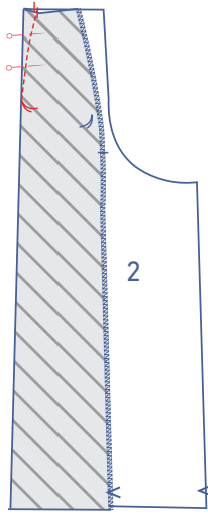
Sew the pleats vertically into place, from the notches to the marking thread.



Turn the front over so that the wrong side is facing up. Press the pleats in the direction of the CF.

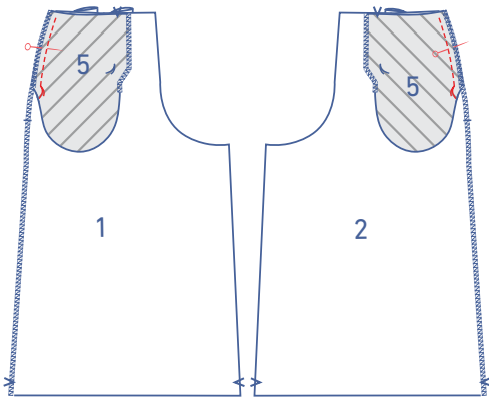


Sew into place at presser foot width from the raw edge.



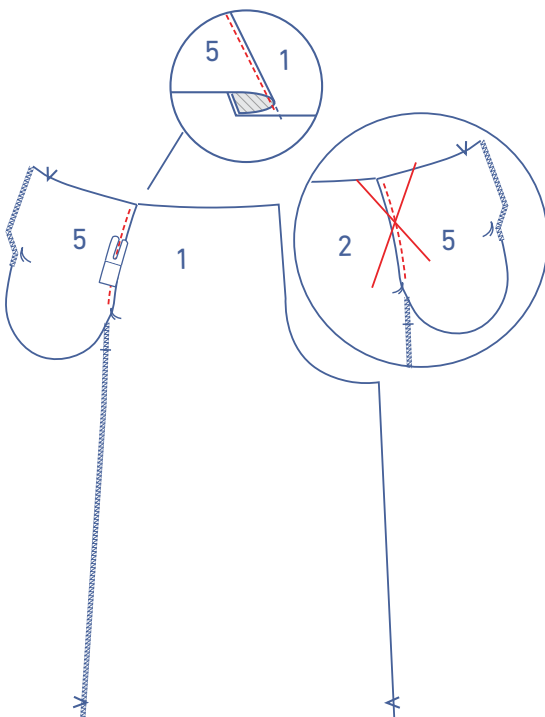
2

Fold the side seam of the back (2) inwards (so the right sides of the fabric are touching), matching the notches in the waist seam. Sew the dart in a slightly curved line as shown towards the marking thread. Stitch up to and just past the marking thread, so that you've sewn past the fabric. Snip the threads and make a knot. Press away from the side seam.

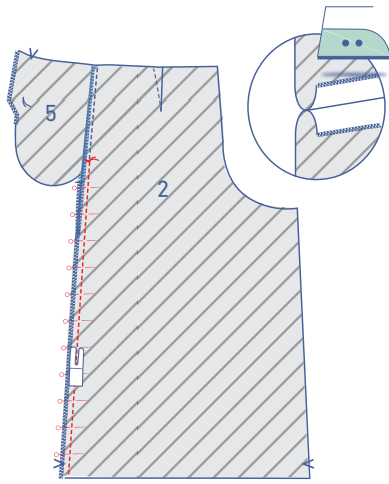


3

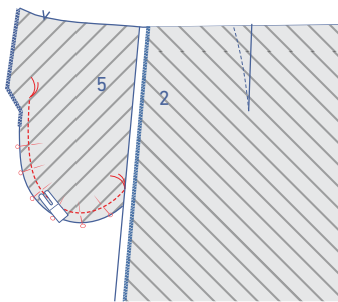
Pin the indicated edge of the two pocket pieces (5) to the side seam of the front (1) and back (2) with marking threads matching. Stitch in place, stopping at the marking threads.



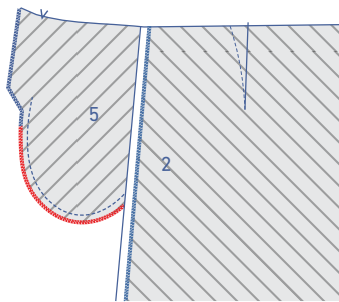
Fold the pocket of the front and the seam allowance over and sew the pocket to the seam allowance underneath. (You will omit this step for the pocket of the back.)



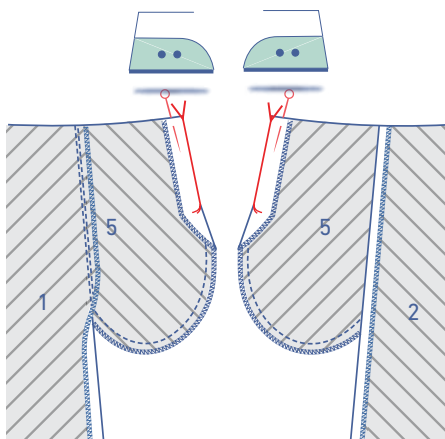
Pin and sew the side seams together, starting from the marking thread that indicates the bottom of the pocket opening down to the hem. Press the seam allowance open.



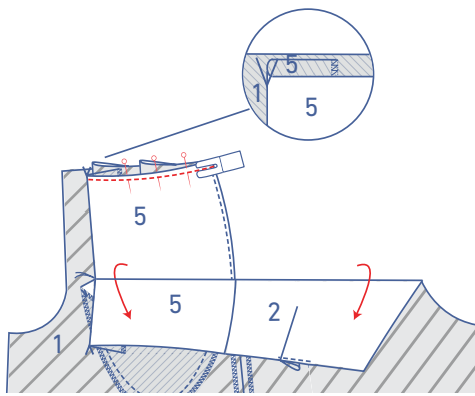
Pin and sew the contours of the pocket pieces together. Sew into place right up to the marking threads.



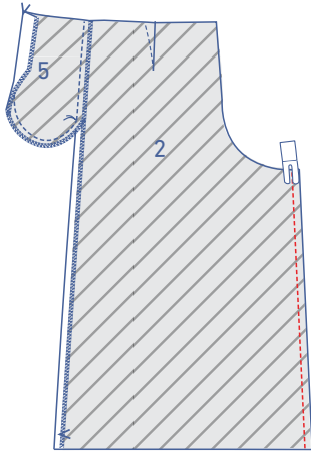
Finish the raw edges together with overlock stitching.



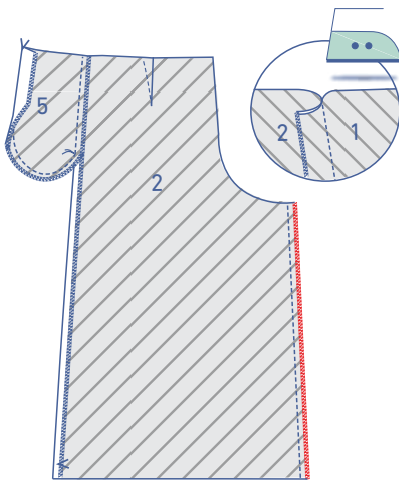
Press the facing of the pocket front and back over at the V notch at the top and the marking thread towards the wrong side. Pin into place at the top.



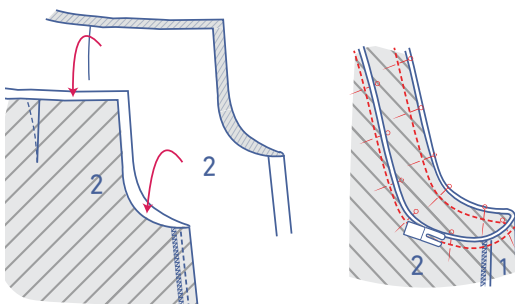
Fold the back over so it is out of the way and line up the top of the front pocket with the waistline of the front. Pin and sew the pocket to the wrong side of the front at presser foot width from the raw edge.



Pin and sew the inseams together.

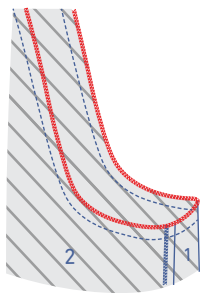


Finish the raw edges together with overlock stitching. Press the seam allowance towards the back.

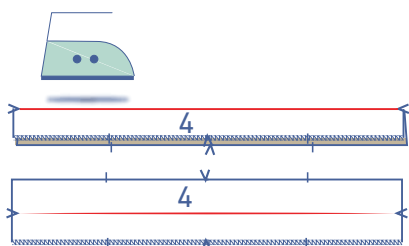
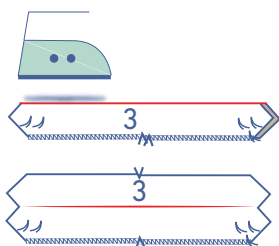
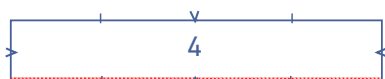
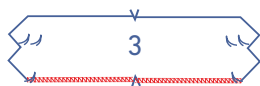


4

Slide one trouser leg into the other with the right sides of the fabric facing. Pin and sew the crotch seam into place.



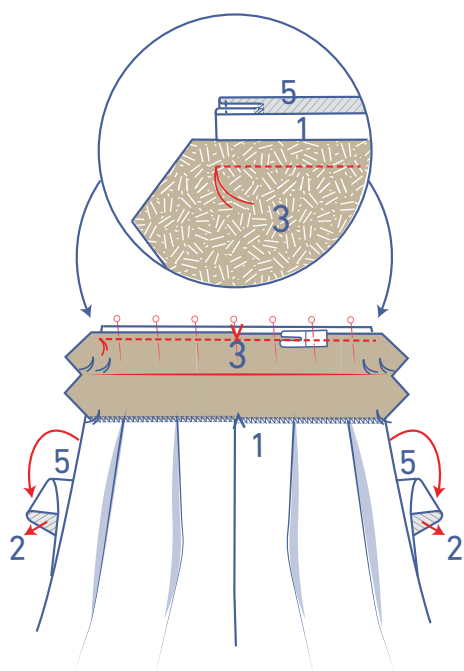
Finish the raw edges together with overlock stitching.



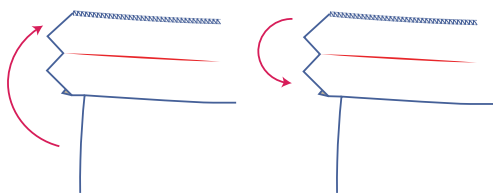
5

Finish the indicated long end of the waistband front (3) and waistband back (4) with overlock stitching.

Press the waistbands in half lengthwise with the wrong sides of the fabric facing. Open back out again.



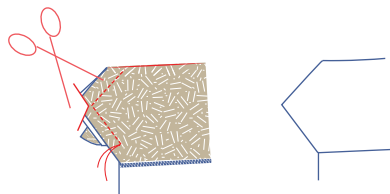
Fold the back down so it is out of the way. Pin the non-overlocked end of the waistband front (3) to the waistline. The marking threads of the waistband should match the finished sides of the trousers. The V notch at the middle of the waistband should match with the CF seam. Sew into place between the marking threads.



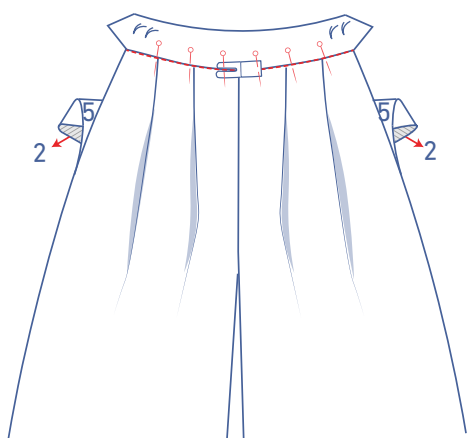
First, fold the waistband all the way up. Next, fold over at the pressed fold line with the right side of the fabric facing.



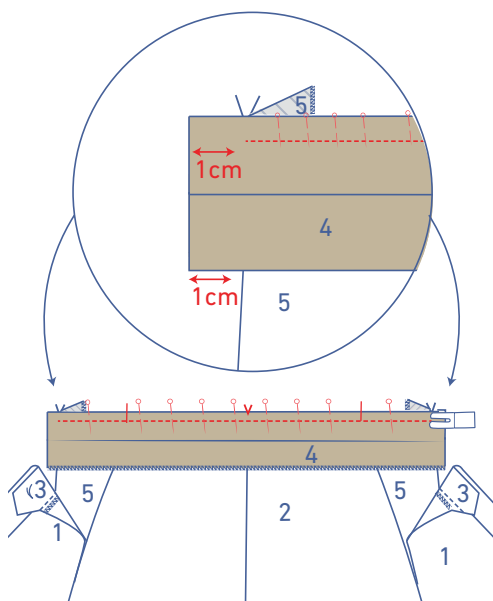
Pin both short ends and sew up to the marking thread.



Trim the seam allowance in the corner and turn the right way out.

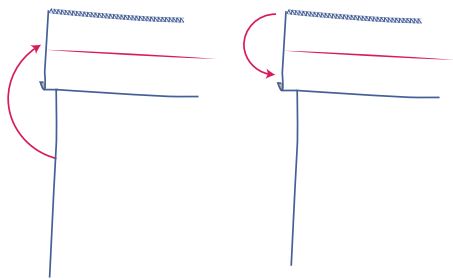


Lay the waistband neatly flat and carefully pin the waistbands together along the right side. Stitch along the waistband seam ("stitch in the ditch") from the right side, making sure you catch the other side of the waistband on the wrong side.



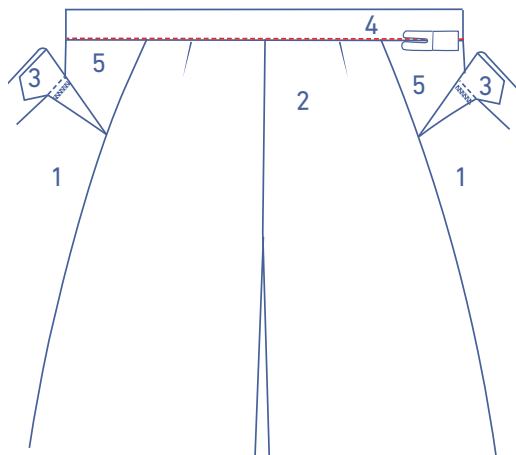
6

Fold the front down so it is out of the way. Pin and sew the non-overlocked end of the back waistband to the waistline. Each short end of the waistband extends 1 cm past the finished sides of the trousers (= the fold line of the back pocket facing when folded). The V notch at the middle of the waistband should align with the CB seam, with the single notches marking the side seam.



Fold the waistband all the way up and then fold down along the pressed fold line with the right side of the fabric facing inwards.

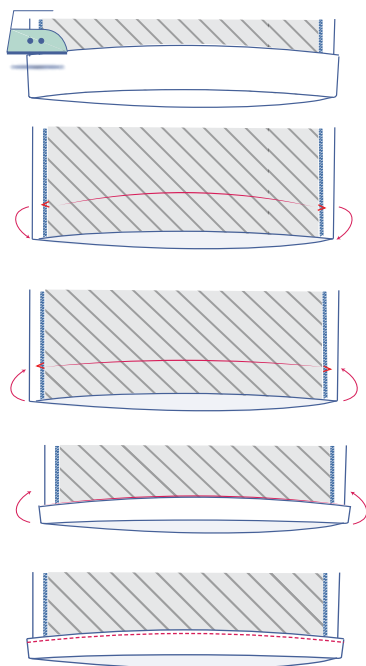
Pin and sew both short ends.



Turn the right way out. Lay the waistband neatly flat and carefully pin the waistbands together along the right side. Stitch along the waistband seam ("stitch in the ditch") from the right side, making sure you catch the other side of the waistband on the wrong side.

7

OPTION 1



Finish the hem based on the type of fabric you are using. Choose option 1 if you have a lightweight fabric, or option 2 for a heavier fabric.

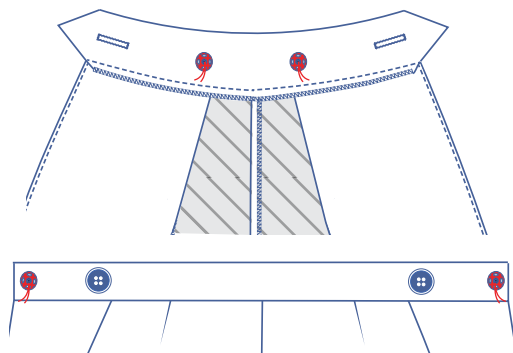
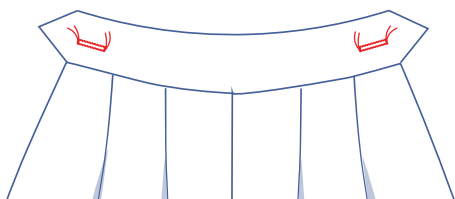
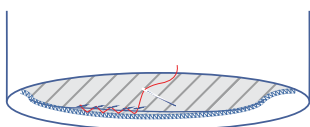
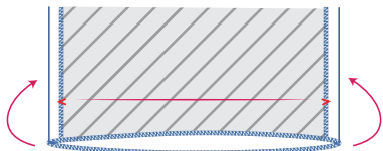
OPTION 1

Press the hem allowance up and open back out.

Fold the raw edge to the fold line and then fold up again.

Sew into place.

OPTION 2



OPTION 2

Finish the hem with overlock stitching.

Press the hem allowance up to the V notch.

Sew the hem allowance into place.

8

Make the horizontal buttonholes in the waistband of the front.

Sew the buttons on the waistband of the back to match the location of the buttonholes.

Sew the snaps on.