

# Alice by Fibre ⚡ood



# Alice by Fibre ood



**XS - XXXL**

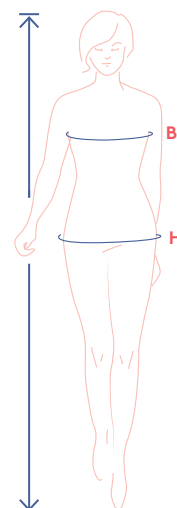
Do you still remember those grand old winters with their white Christmases? Alice takes you back in a flash. Make this jumper classic in a comfy knit fabric. Show it off with the round neckline in front and daring V-neck at the back, or wear it the other way around. With the V-neck at the front, layer it with a polo neck for a different look. The inset sleeves have wrist trim in ribbed trim fabric – or not... up to you! Go the simple route and finish the hem at the desired length or use the same pretty ribbed trim you did for the wrist trim! Anything goes. Alice is flexible and loves making things cosy.



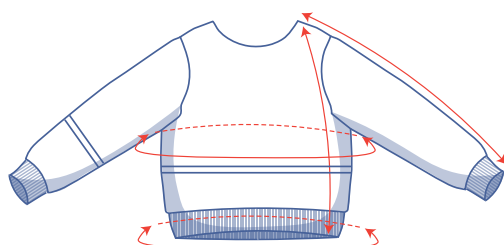
## size chart (in cm)

size	XS		S		M		L		XL		XXL		XXXL		
	4	6	8	10	12	14	16	18	20	22	24	26	28	30	32
body height	160	164	166	167	168	169	170	171	172	172	172	172	172	172	172
B (bust)	76	80	84	88	92	96	100	104	110	116	122	128	134	140	146
H (hips)	86	90	94	97	100	103	106	109	115	120	125	130	135	140	145

Choose your size based on your bust measurement. If your hip measurements are wider than those in the size chart, check the hem circumference in the chart below to see if there's enough room or whether the pattern needs to be altered. It's easy to do. Simply trace the line of the one size instead of the other.



## pattern measurements (in cm)



This chart's measurements are the pattern measurements based on the fabric type and serve as a reference. Ease has been added to the width measurements (in addition to the exact body measurements) for a more comfortable fit. Alice is designed to have a loose cut. Depending on the preferred cut, you could decide to go a size smaller or larger than the recommended size.

— shorten or lengthen the pattern here

size	XS	S	M	L	XL	XXL	XXXL
length	57.5	58.25	59	59.75	61	62.25	63.5
sleeve length*	63.5	65	66.5	68	69.75	71.25	73
bust	91.5	99.5	107.5	115.5	125.5	137.5	149.5
hem circumference**	69.5	76.25	83	90	98.75	107.5	116.25

\* Including the shoulder length and wrist trim.

\*\* Measured when the hemband is not stretched. → **FYI**: the hem band is in trim fabric (= stretchy).



Compare the stated lengths to the measured or desired lengths. **Lengthen** or **shorten** the jumper and/or sleeves by cutting the pattern pieces at the indicated double lines. Then either increase the distance between the cut pieces by the desired amount (to lengthen), or overlap the pieces (to shorten). Make sure that the CF and CB lines and the side seams are always straight.



### IMPORTANT

Adjust the amount of fabric to be used based on these alterations.

## supplies



- Thread
- Fabric: see table
- Trim fabric: max. 50 cm
- Iron-on interfacing: max. 30 cm

fabric		XS	S	M	L	XL	XXL	XXXL
fabric width 110 cm	cm	115	130	175	175	210	245	260
fabric width 140 cm	cm	115	115	115	120	120	185	190

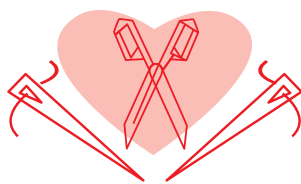
The corresponding fabric layout can be found on page 6 of these sewing instructions.

## fabric advice



Alice looks best in a knit fabric. And there's no shortage of options with sweatshirt fabric, scuba, interlock, knit jacquard, etc. to choose from.

# Proud to be #Sewista

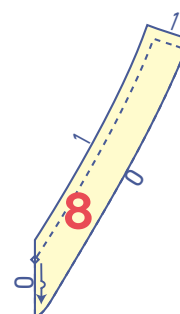
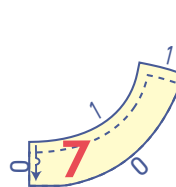
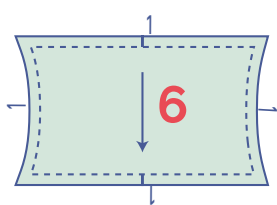
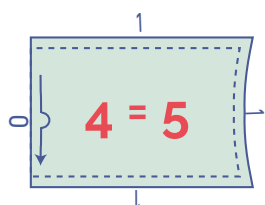
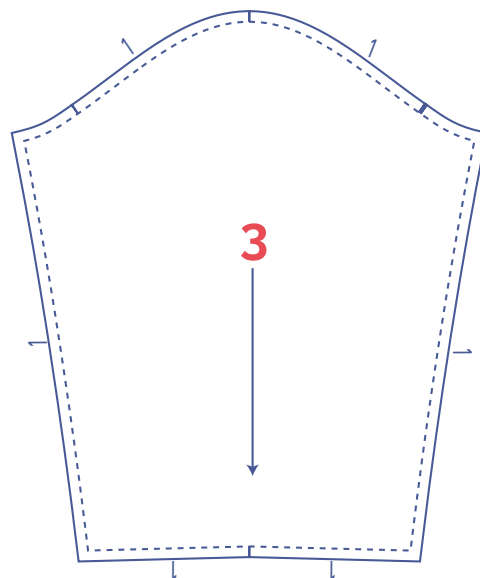
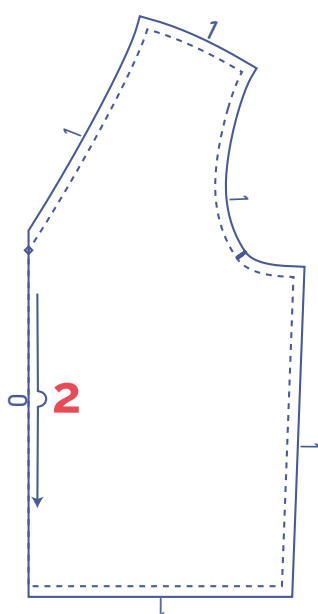
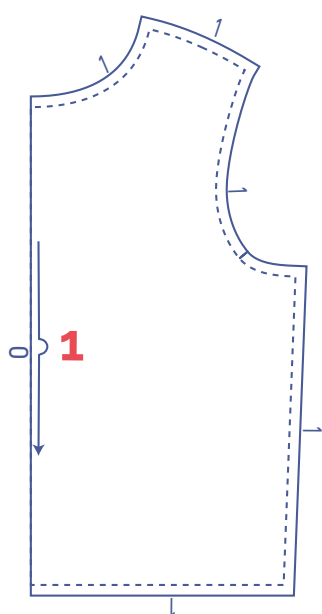


## pattern pieces & seam allowances (in cm)

To sew the garment as described in the instructions, draw the illustrated seam allowances around the paper pattern pieces before cutting them out. If you are using a PDF pattern, the pattern can be printed with or without seam allowances.

To find out more, watch the [video](#).

- 1. front: 1x on fabric fold
- 2. back: 1x on fabric fold
- 3. sleeve: 2x
- 4. hem band front: 1x on fabric fold
- 5. hem band back: 1x on fabric fold
- 6. wrist trim: 2x
- 7. front facing: 1x on fabric fold
- 8. back facing: 1x on fabric fold



### IMPORTANT


Pattern pieces 4 and 5 are the same pattern pieces.

### IMPORTANT

If you are using a thick fabric, cut pattern pieces 7 and 8 out of thinner fabric.

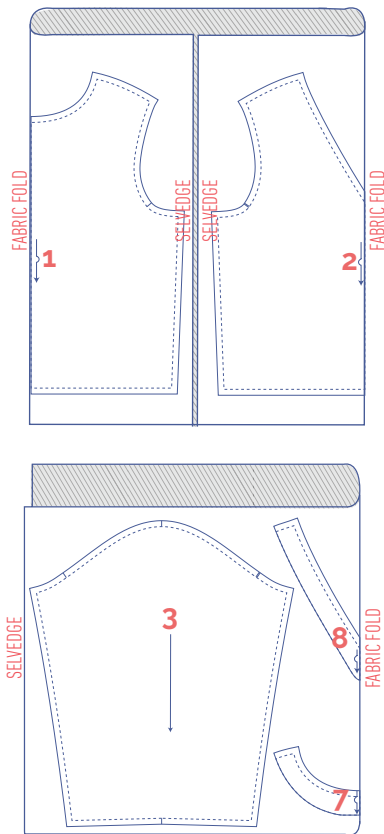
### IMPORTANT

The pieces highlighted in light yellow have iron-on interfacing attached to the wrong side.

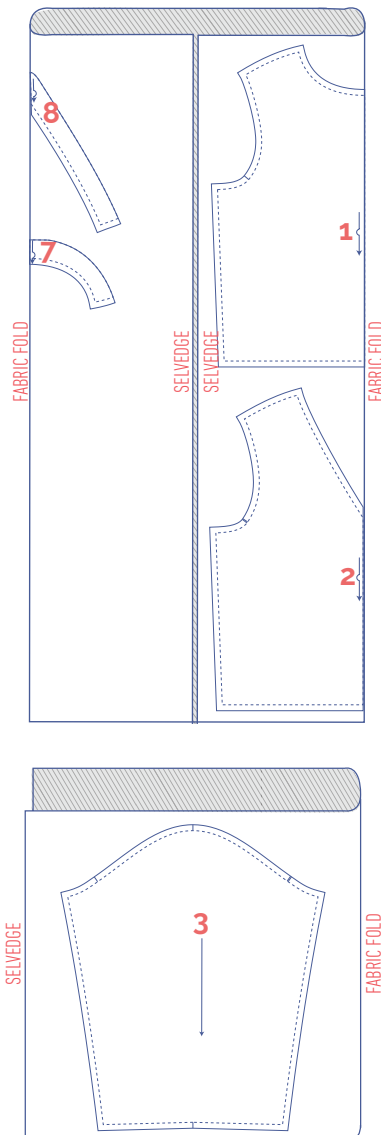
	material type
	fabric
	iron-on interfacing
	trim fabric

**fabric layout – solid fabrics**  
**fabric width 110 cm**

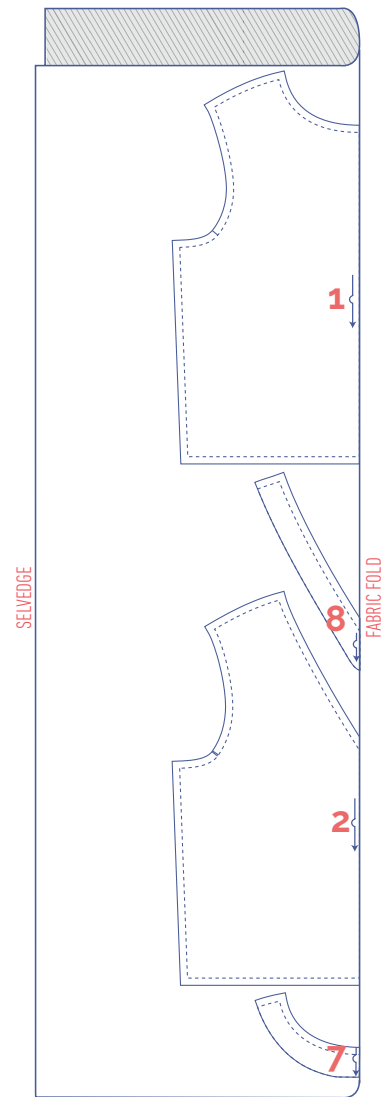
**XS - S**



**M - L**

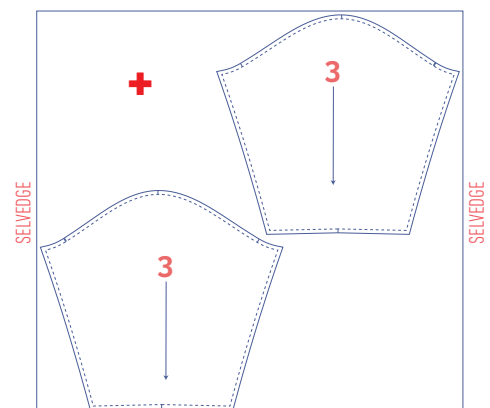


**XL - XXXL**



**IMPORTANT**

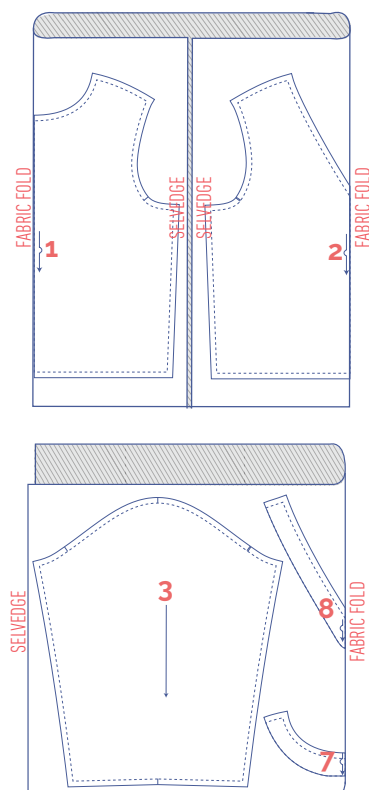
If you are using a thick fabric, cut pattern pieces 7 and 8 out of thinner fabric.



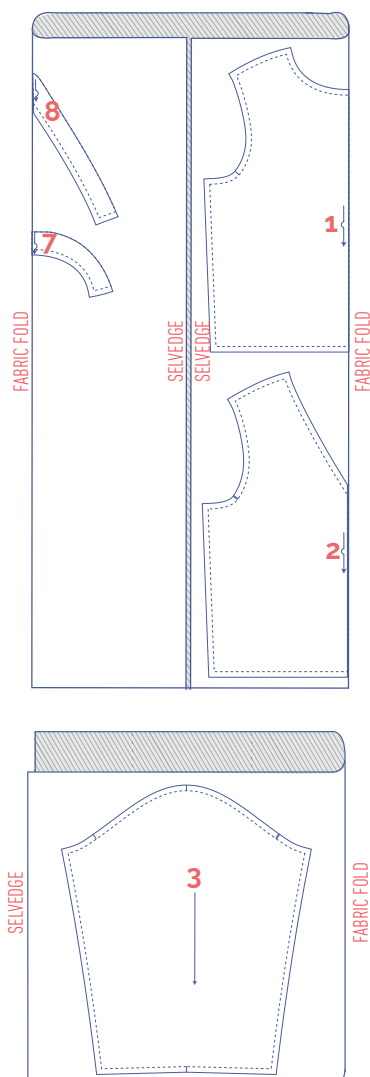
## fabric layout – solid fabrics

### fabric width 140 cm

XS - XL



XXL - XXXL



### IMPORTANT

If you are using a thick fabric, cut pattern pieces 7 and 8 out of thinner fabric.

## marking pattern pieces



notch the pattern paper and fabric at the following points



single notch



double notch



V notch



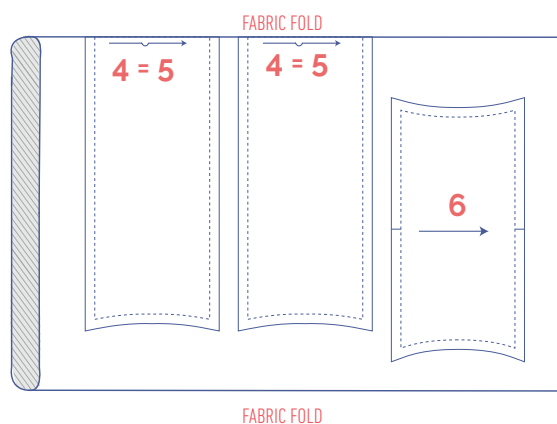
mark the following points using marking thread



centre point

## fabric layout for trim fabric

XS - XXXL



# sewing instructions



The sewing instructions explain how to make the jumper if you don't have an overlock machine. Use a stretch stitch setting on your sewing machine to sew the seams and an overlock stitch to finish the raw edges. The seams of the jumper can also be made with just a 4-thread overlocker, i.e. 2 upper looper threads and 2 lower looper threads which finishes the raw edges and sews the seams together at the same time. The seams will stay stretchy. The facings should be sewn with a normal sewing machine.

F front

B back

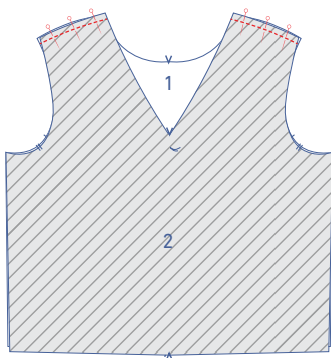
CF centre front

CB centre back

 right side

 wrong side

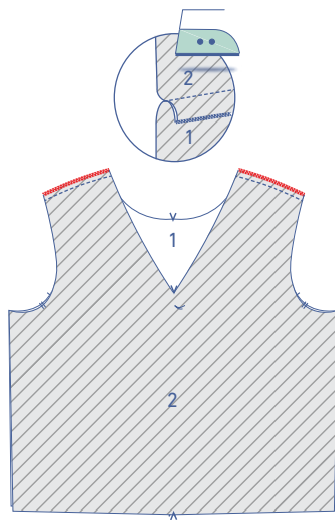
 trim fabric



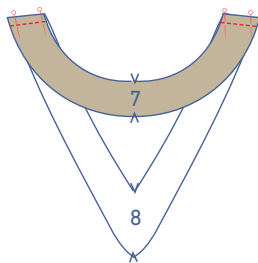
**1**

Pin and sew the shoulder seams of the front (1) and back (2) together.



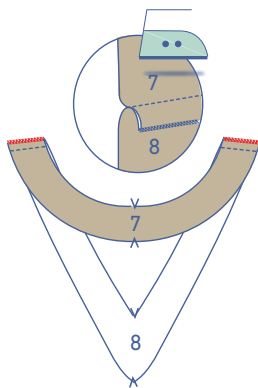


Finish the raw edges together with overlock stitching and press the seam allowance towards the front.

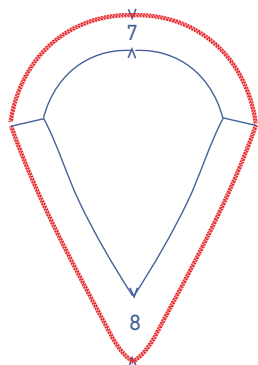


## 2

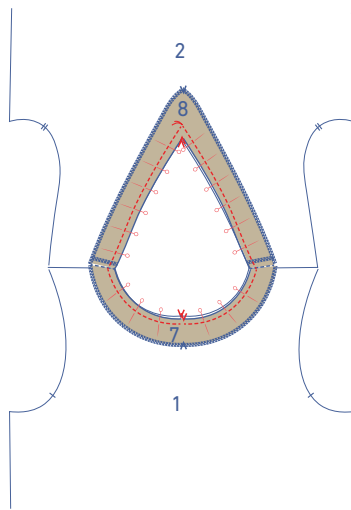
Pin and sew the shoulder seams of the facing front (7) and facing back (8).



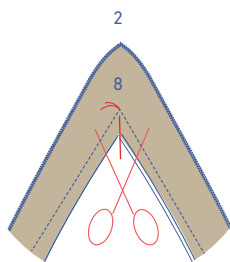
Finish the raw edges together with overlock stitching and press the seam allowance towards the back.



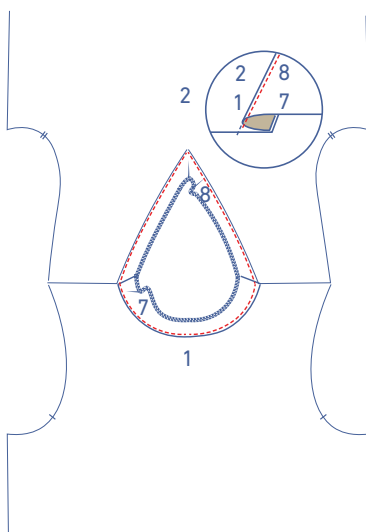
Finish the outer edges of the facing with overlock stitching.



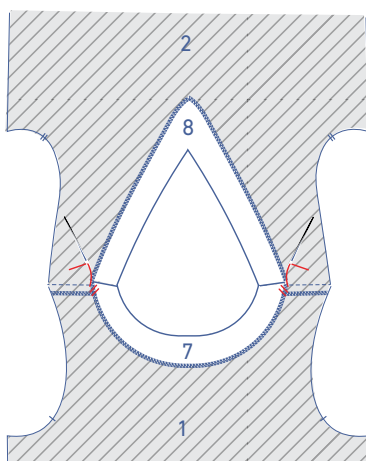
Pin the facing to the main body as shown, right sides together. Sew where indicated with a 1cm seam allowance, stopping at the marking thread at the V point.



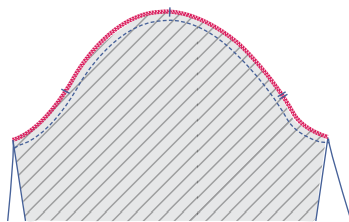
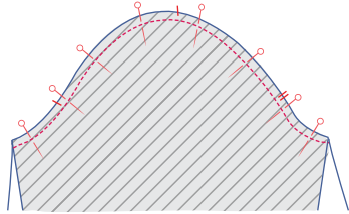
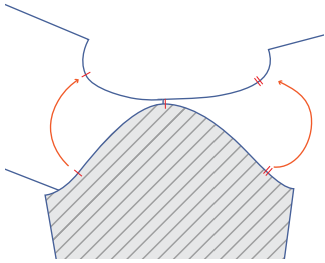
Snip into the seam allowance at the apex of the V until just before the marking thread.



Fold the facing over and stitch to the seam allowance underneath.



Press the facing neatly towards the wrong side and secure the shoulder seams together with a few stitches.



---

### 3

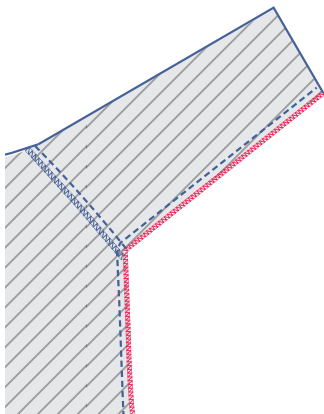
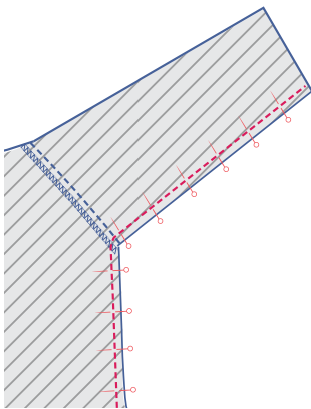
Pin and sew the top of the sleeve (3) (= the sleeve cap) to the armhole with the markings matching. The single notch marks the front, while the double notch marks the back. The top notch should line up with the shoulder seam.

Finish the raw edges together with overlock stitching.

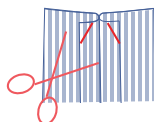
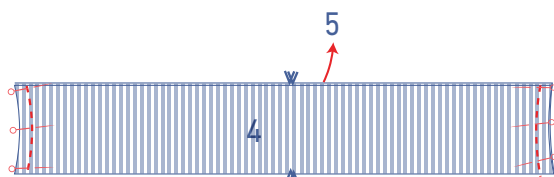
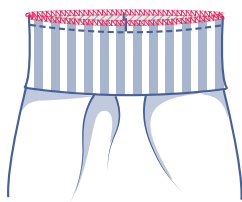
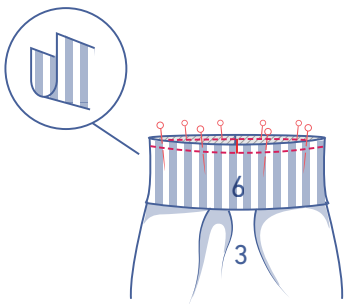
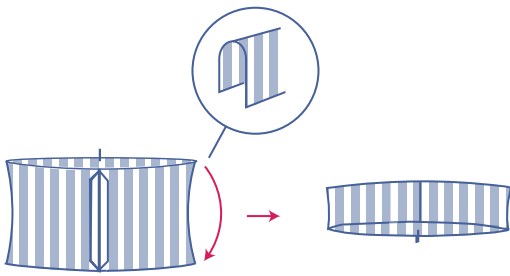
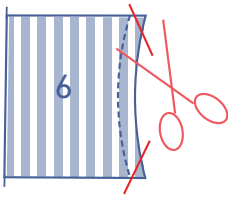
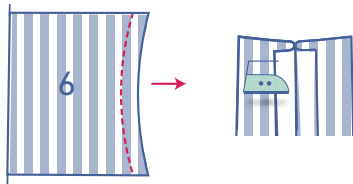
---

### 4

Pin and sew the side and underarm seams.



Finish the raw edges together with overlock stitching.



## 5

Sew the short ends of the wrist trims (6) and press the seam allowance open. Trim the tips of the seam allowance at an angle to prevent the fabric from bunching.

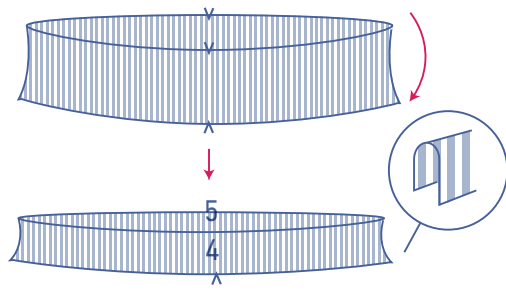
Press the wrist trim in half lengthwise with the wrong sides of the fabric facing each other.

Slide the wrist trim over the bottom of the sleeve, aligning the raw edges and matching the seams and notches. Pin and sew. The circumference of the wrist trim is smaller than the sleeve hem, so stretch the wrist trim as you sew to match the sleeve hem.

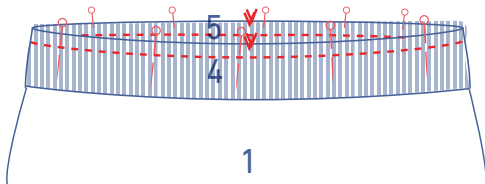
Finish the raw edges together with overlock stitching.

## 6

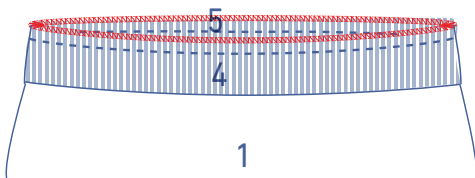
Pin and sew the side seams of the hem band front (4) and hem band back (5) together and press the seam allowance open. Trim the tips of the seam allowance at an angle to prevent the fabric from bunching.



Press the hem band in half lengthwise with the wrong sides of the fabric facing each other.



Slide the hem band over the bottom of the garment, aligning the raw edges and matching the side seams and notches. Pin and sew. The circumference of the hem band is smaller than the circumference of the garment, so stretch the hem band to the bottom of the garment.



Finish the raw edges together with overlock stitching.