

# Cosette by Fibre ⚡ood



# Cosette by Fibre ⚡ood



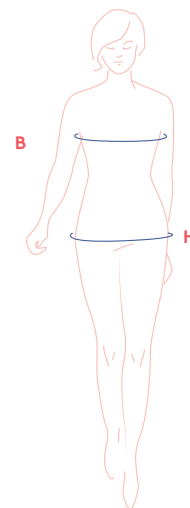
32 - 58

Cosette is this seasons's staple top – there's no limit to what you can pair it with. With a round neckline and a fitted cut around the bust, it tapers out into a flattering A-line shape. The back has a lovely finish, featuring a deep, box pleat. For a classic look, go plain, or choose a colourful statement print.



## size chart

| maat (EU)  | 32   | 34   | 36   | 38   | 40   | 42   | 44   | 46   | 48   | 50   | 52   | 54   | 56   | 58   |
|------------|------|------|------|------|------|------|------|------|------|------|------|------|------|------|
| UK         | 4    | 6    | 8    | 10   | 12   | 14   | 16   | 18   | 20   | 22   | 24   | 26   | 28   | 30   |
| US         | 0    | 2    | 4    | 6    | 8    | 10   | 12   | 14   | 16   | 18   | 20   | 22   | 24   | 26   |
| B (cm)     | 76   | 80   | 84   | 88   | 92   | 96   | 100  | 104  | 110  | 116  | 122  | 128  | 134  | 140  |
| B (inches) | 29.9 | 31.5 | 33.1 | 34.6 | 36.2 | 37.8 | 39.4 | 40.9 | 43.3 | 45.7 | 48   | 50.4 | 52.8 | 55.1 |
| H (cm)     | 86   | 90   | 94   | 97   | 100  | 103  | 106  | 109  | 115  | 120  | 125  | 130  | 135  | 140  |
| H (inches) | 33.9 | 35.4 | 37   | 38.2 | 39.4 | 40.6 | 41.7 | 42.9 | 45.3 | 47.2 | 49.2 | 51.2 | 53.1 | 55.1 |



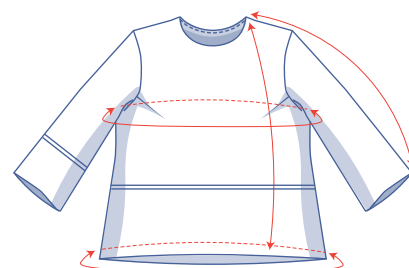
**Bust (B):** measure horizontally around the widest part of the bust.

**Hips (H):** measure horizontally around the widest part of the lower body.

You should choose your size based on your bust measurement. If your hips are wider than the corresponding hip measurement in the size chart, look at the table below with hem circumference measurements to see whether there's enough room at the hips or if it will need to be altered.

## finished garment measurements(in cm)

This chart's measurements serve as a reference. Ease has been added to the width measurements (in addition to the exact body measurements) for a more comfortable fit and to achieve a particular cut. For a more boxy fit, choose a size larger than your measurements.



| size                | 32   | 34    | 36    | 38    | 40    | 42    | 44    | 46     | 48     | 50     | 52     | 54     | 56     | 58     |
|---------------------|------|-------|-------|-------|-------|-------|-------|--------|--------|--------|--------|--------|--------|--------|
| length              | 55.5 | 55.75 | 56    | 56.25 | 56.5  | 56.75 | 57    | 58.25  | 58.75  | 59.25  | 60.75  | 61.25  | 61.75  | 62.25  |
| sleeve length*      | 50.5 | 51    | 51.75 | 52.25 | 53    | 53.5  | 54    | 54.75  | 57     | 57.75  | 58.25  | 58.75  | 59.5   | 60     |
| bust                | 85.5 | 89.5  | 93.5  | 97.5  | 101.5 | 105.5 | 109.5 | 113.5  | 119.75 | 125.75 | 131.75 | 137.75 | 143.75 | 149.75 |
| hem circumference** | 110  | 114   | 118   | 122   | 126   | 130   | 134   | 137.75 | 143.75 | 149.75 | 155.5  | 161.5  | 167.5  | 173.5  |

\* Including the shoulder length.

\*\* Be sure to remember that this circumference is above the exact hip circumference.

Compare the stated lengths to the measured or desired lengths. **Lengthen** or **shorten** the top and/or the sleeves by cutting the pattern pieces at the indicated double lines and then spreading the pattern pieces out X cm from each other or overlapping them where necessary. Make sure that the CF and CB lines and the side seams are always straight.



## IMPORTANT

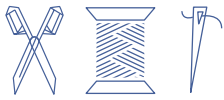
Adjust the fabric to be used based on these alterations.

## fabric advice



We made the Cosette Top in an interlock fabric. Interlock (e.g. Ponte Roma) is a double-knit stretch fabric that is heavier and has more body than single jersey and is slightly elastic. The Cosette top would also look lovely in neoprene or scuba. Just make sure the fabric that you choose has a decent stretch. Find out all the facts about the Fibre Mood fabric collection and the accompanying fabric layouts [here](https://www.fibre mood.com/en/fabrics) or on [www.fibre mood.com/en/fabrics](https://www.fibre mood.com/en/fabrics).

## supplies



- Thread
- Iron-on interfacing: max. 20 cm
- Hook-and-eye closure
- Fabric: see table

| fabric used (in cm)<br>F⚡ collection  | 32  | 34  | 36  | 38  | 40  | 42  | 44  | 46  | 48  | 50  | 52  | 54  | 56  | 58  |
|---------------------------------------|-----|-----|-----|-----|-----|-----|-----|-----|-----|-----|-----|-----|-----|-----|
| grey interlock<br>fabric width 150 cm | 110 | 110 | 110 | 110 | 110 | 110 | 110 | 110 | 150 | 150 | 155 | 160 | 165 | 165 |
| blue interlock<br>fabric width 150 cm | 110 | 110 | 110 | 110 | 110 | 110 | 110 | 110 | 150 | 150 | 155 | 160 | 165 | 165 |

Discover the Fibre Mood fabric collection and the accompanying fabric layouts [here](http://www.fibre mood.com/en/fabrics) or on [www.fibre mood.com/en/fabrics](http://www.fibre mood.com/en/fabrics).

| fabric used (in cm)<br>standard | 32  | 34  | 36  | 38  | 40  | 42  | 44  | 46  | 48  | 50  | 52  | 54  | 56  | 58  |
|---------------------------------|-----|-----|-----|-----|-----|-----|-----|-----|-----|-----|-----|-----|-----|-----|
| fabric width 140 cm             | 110 | 110 | 110 | 110 | 110 | 145 | 145 | 150 | 150 | 160 | 160 | 165 | 170 | 170 |

The corresponding fabric layout can be found on the last page of these sewing instructions.

[illegible]

# sewing instructions



The method used to hem the garment will depend on your chosen fabric. The pieces are always sewn together with right sides facing, unless stated otherwise.

F front

B back

CF centre front

CB centre back

LBP left back piece



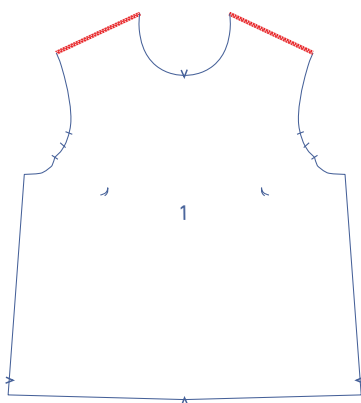
right side



wrong side

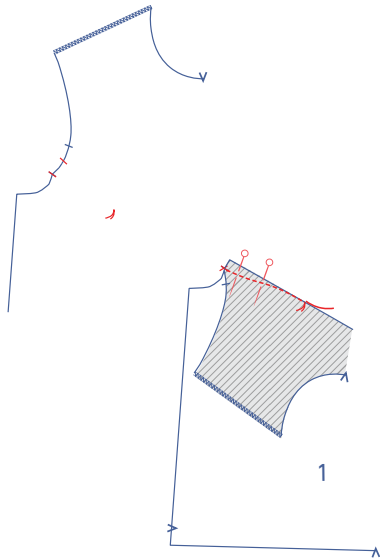


iron-on interfacing

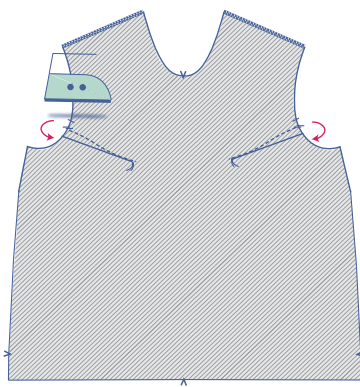


**1**

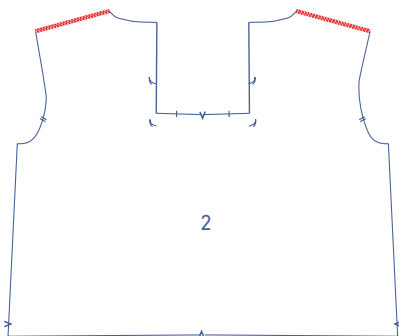
Finish the shoulders of the front (1) with overlock stitching.



Fold the bottom two nicks on the armhole of the front together with the right sides of the fabric facing inwards. From the bust dart, stitch in a slightly curved line towards the basting thread. Stitch up to and just past the basting thread, finishing just past the fabric. Snip the threads and make a knot. Repeat for the other dart.

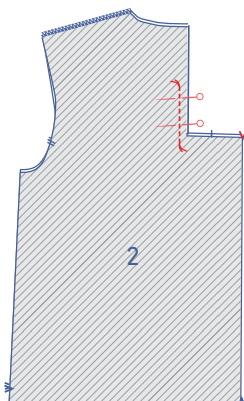


Turn the front over so that the wrong side is facing up. Press the dart towards the bottom.

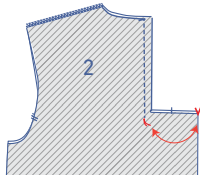


## 2

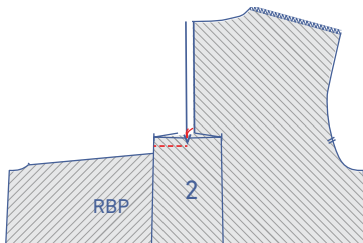
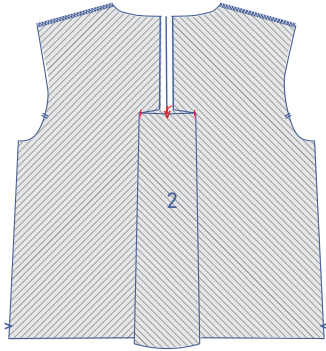
Finish the shoulders of the back (2) with overlock stitching.



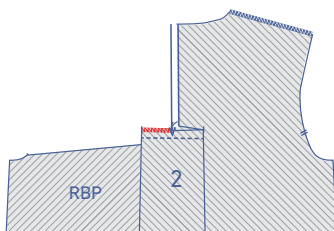
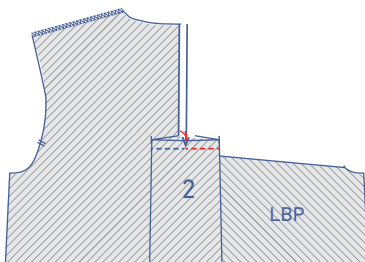
Pin and sew the piece of CB seam between the two basting threads.



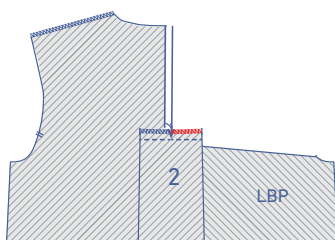
Create the box pleat in the back by pushing the pleat flat at the nicks so that the central V notch lines up with the CB seam.

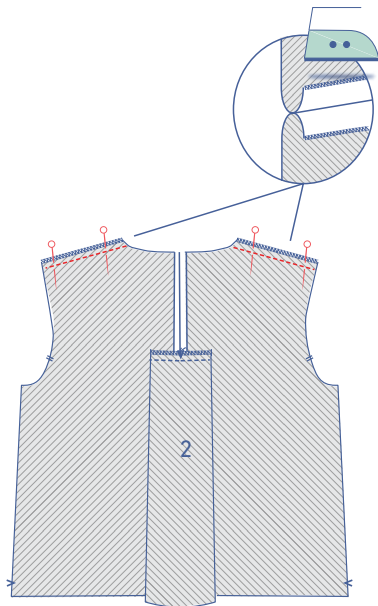


Sew the pleat allowance together both to the left and right of the CB seam. To do this, always fold the back out of the way (the pleat is not attached to the back). On both sides, sew into place up to the basting threads on the CB seam.



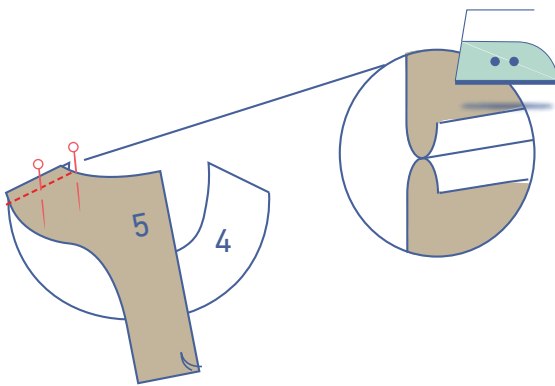
Finish the raw edges together with overlock stitching to the left and right of the CB seam.



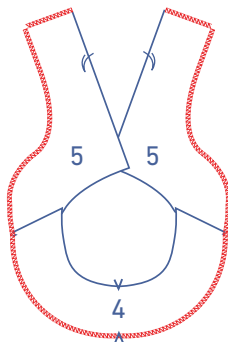


### 3

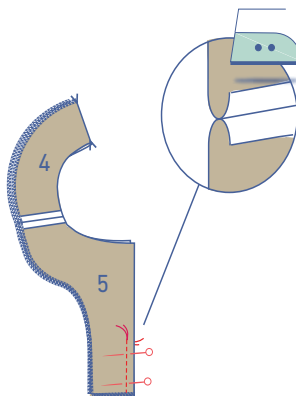
Pin and sew the shoulder seams. Press open the seam allowance.



Pin and sew the shoulder seams of the facing front (4) and facing back (5). Press open the seam allowance.

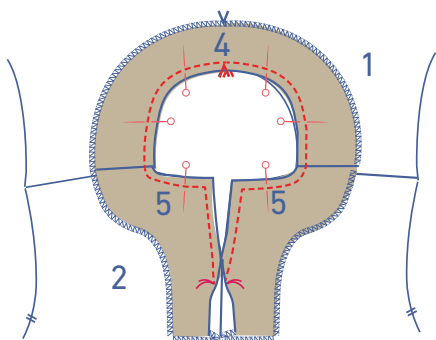


Finish the indicated edges with overlock stitching.

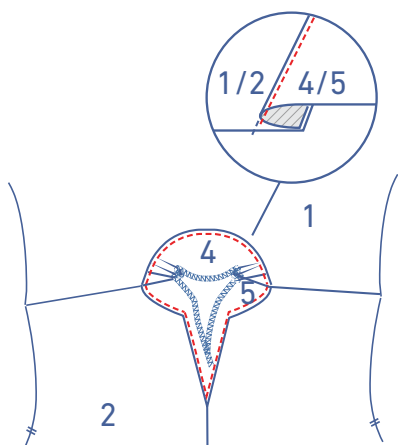


Pin the piece of CB seam under the basting and press open the seam allowance.

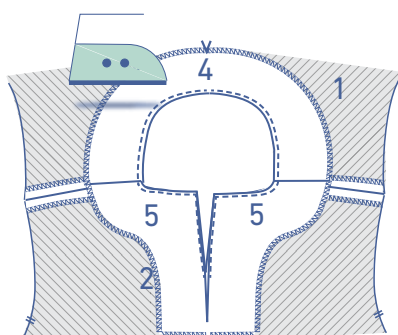




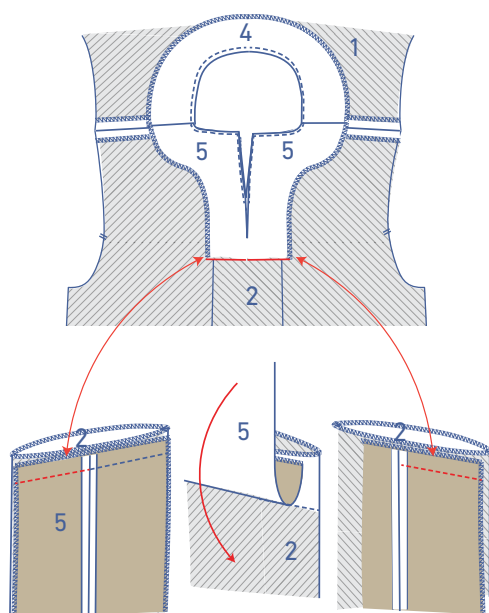
To attach the facing to the neckline, pin and sew the garment facing with the corresponding nicks and shoulder seams matching. Always sew into place right up into the basting threads.



Fold the facing and the seam allowance away from the top and towards the facing. At 2 mm from the seam, understitch the facing and underlying seam allowance as far as possible in both directions.

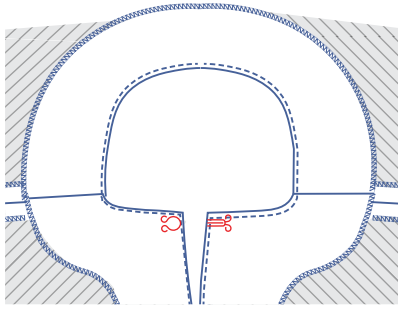


Press the facing neatly towards the wrong side. For a smooth curve, cut small triangles out of the neckline's seam allowance where needed.

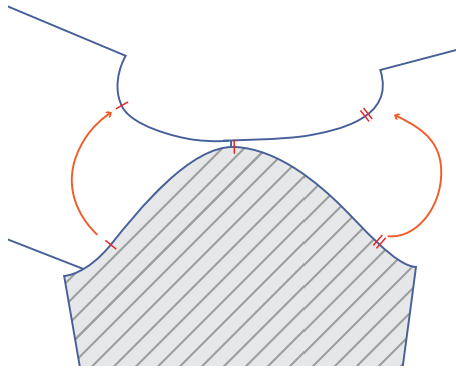


Sew the bottom of the facing to the top of the pleat along the left and right sides of the CB seam. In addition, fold 1 cm of the bottom of the facing under to the wrong side so that the right side of this seam allowance is facing the right side of the pleat.

With the wrong side of the back facing up, tuck the bottom of the facing (5) underneath by 1 cm so it is hidden. Then take the seam allowances of the facing (5) and the top of the pleat (2) together, and sew them together on both sides of the CB.

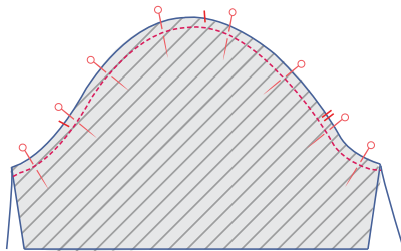


Sew the hook-and-eye closure to the top of the facing in the CB.

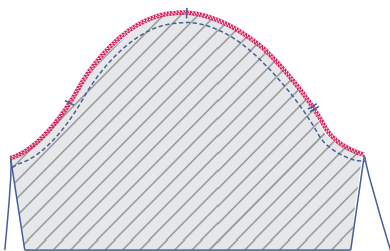


## 4

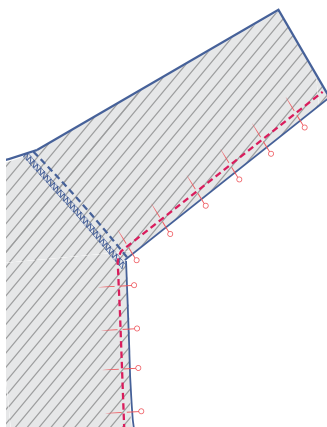
With right sides together, pin the top of the sleeve (= the sleeve cap ) to the armhole with the corresponding markings matching. The single nick marks the front, while the double nicks mark the back. The single nick at the top should be perfectly aligned with the shoulder seam.



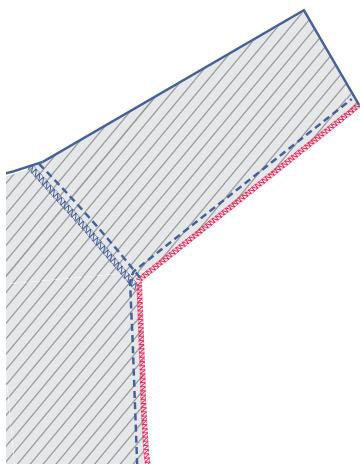
Distribute the remaining fabric evenly between the nicks. Sew into place.



Finish the raw edges together with overlock stitching.



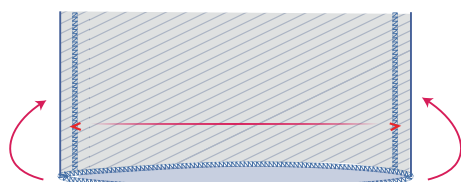
Pin and sew the side and underarm seams in one long line.



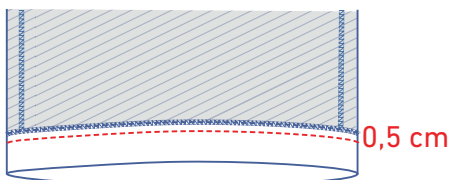
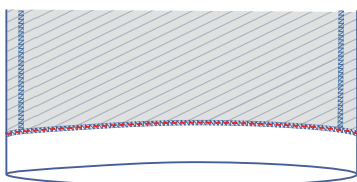
Finish the raw edges together with overlock stitching.

## 5

Finish the hem and sleeve hems with overlock stitching.

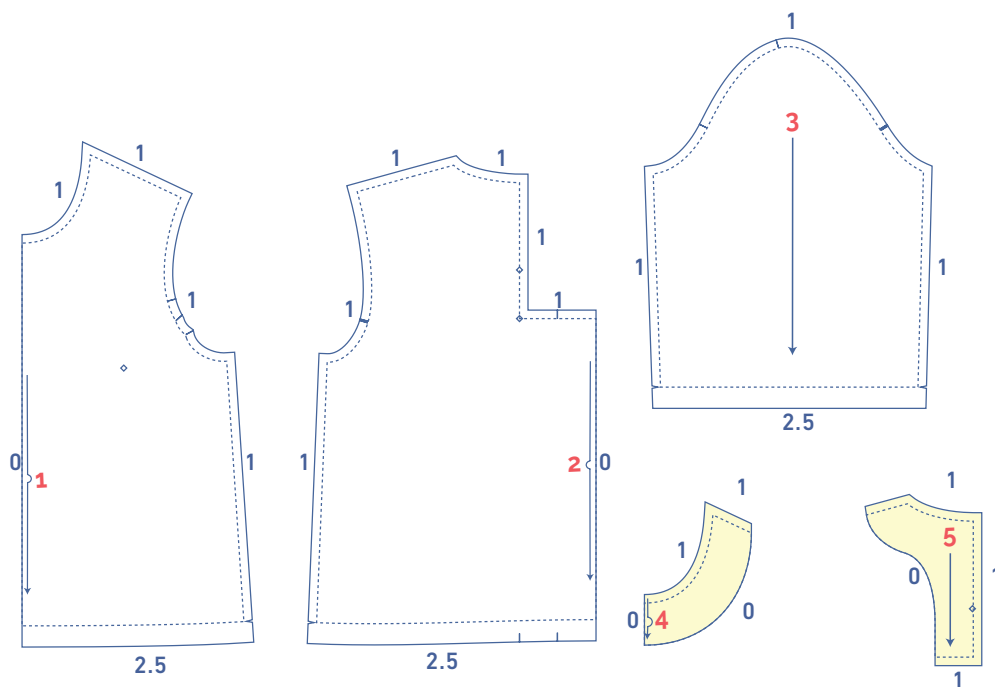


Fold the hems up at all the V notches and sew together all the way around the overlock stitching. Add some extra top stitching 0.5 cm under the previous stitching.



## pattern pieces & seam allowances (in cm)

To sew the garment as described in the instructions, you need to draw the illustrated seam allowances around the paper pattern pieces before cutting them out.



1. front: 1x on fabric fold
2. back: 1x on fabric fold
3. sleeve: 2x
4. facing front: 1x on fabric fold
5. facing back: 2x

**IMPORTANT**

The pieces highlighted in light yellow have iron-on interfacing attached to the wrong side.

## fabric layout for fabrics 140 cm wide

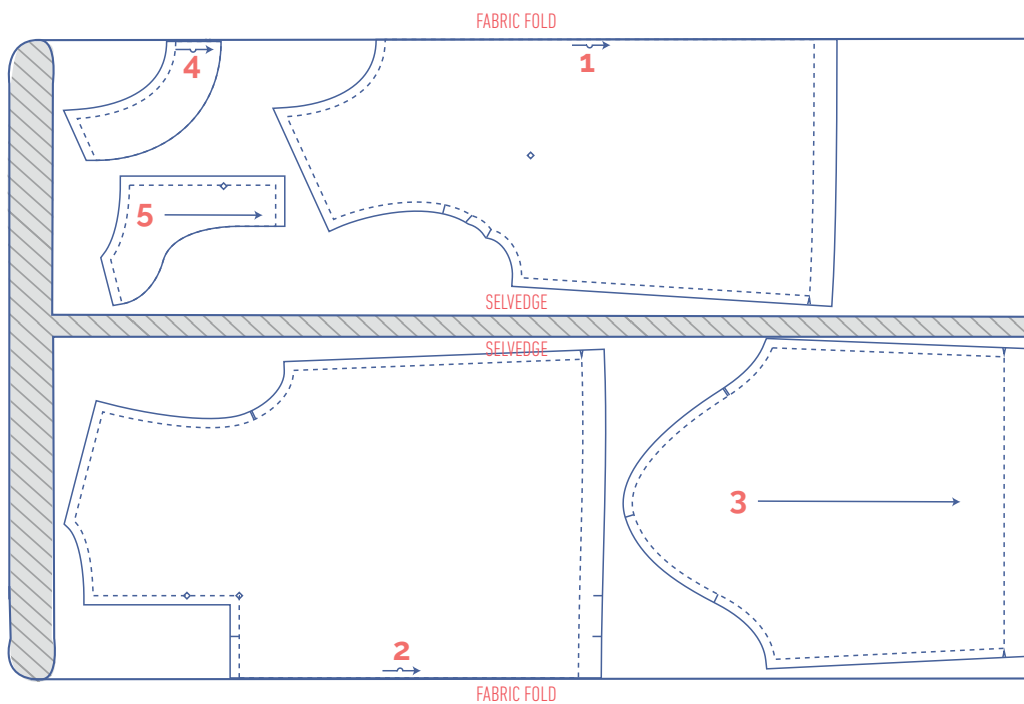
Before we begin sewing, make sure to transfer all markings onto your fabric:

- Nick the pattern paper and fabric at the places where a single vertical line (I) and double vertical lines (II) are indicated.
- Cut a notch out of the fabric at a V notch symbol or on the finished hemline.
- Cut a notch out of the pieces that lie on the fabric fold to mark the middle of these pieces.

Indicate crucial points on the pattern:

- On the CB, mark the point indicating where you should sew the back together, the pivot point of the bust dart/dart alternative and the location of the pleat on the CB by hand with basting thread (↖) by basting through the middle of the (◇).

### 32 - 40



### 42 - 58

