

# Glory by Fibre ood



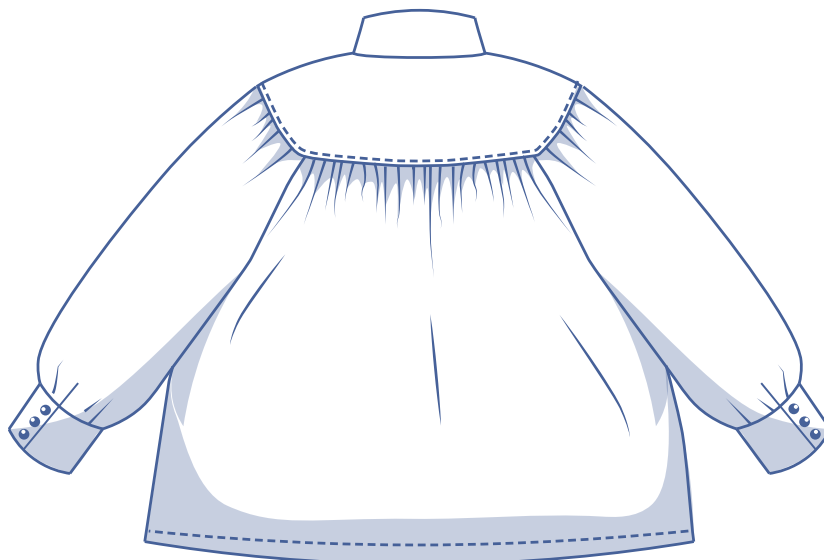
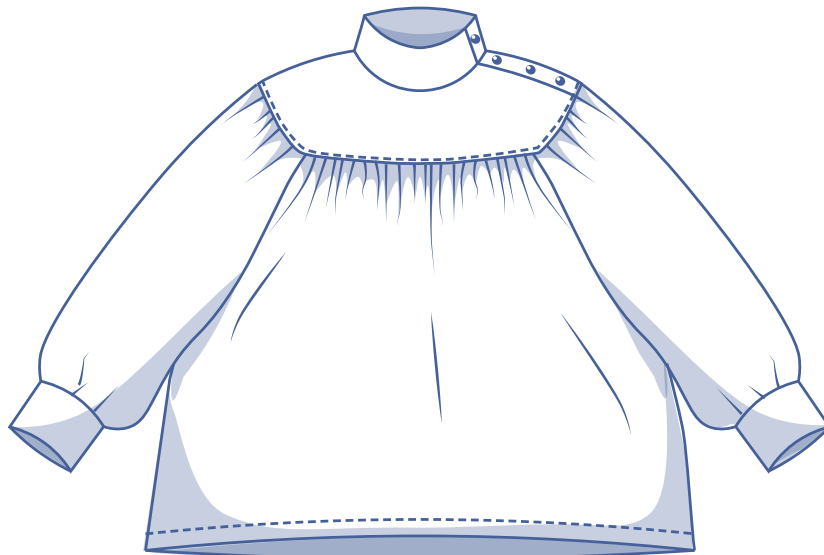
# Glory by Fibre Mood

\*\*\*



XS - XXXL

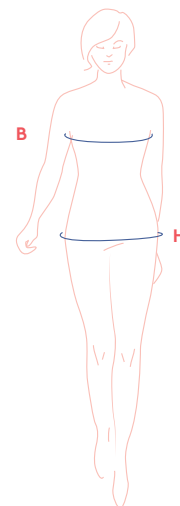
Add a romantic flair to your everyday wardrobe!  
The Glory top is just that; the perfect mix of dreamy  
and casual with whimsical detailing in the soft gathers  
and standing collar. Let's not forget the asymmetric  
button closure for an extra special touch!



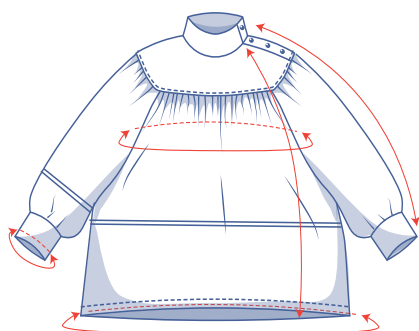
## size chart (in cm)

size	XS		S		M		L		XL		XXL		XXXL		
	4	6	8	10	12	14	16	18	20	22	24	26	28	30	32
height	160	164	166	167	168	169	170	171	172	172	172	172	172	172	172
B (bust)	76	80	84	88	92	96	100	104	110	116	122	128	134	140	146
H (hip)	86	90	94	97	100	103	106	109	115	120	125	130	135	140	145

For this pattern, you should choose the size based on your bust measurement. Pick the size that fits your bust circumference best.



## pattern measurements (in cm)



The measurements in the table below are based on the fabric type and serve as a reference. Ease has been added to the width measurements (on top of the exact body measurements) for a more comfortable fit and to achieve a particular cut (fitted, loose, oversized). Depending on how you want your garment to fit, you could size up or down accordingly.

size	XS	S	M	L	XL	XXL	XXXL
length	62.5	63.5	64.75	65.75	68.5	70	71.5
sleeve length*	73	73.5	74	74.5	75	75.75	76.5
bust**	134	142	150	158	168	180	192
hem circumference	128	136	144	152	162	174	186
wrist trim circumference	22	23	24	25	26	27	28

\* Including the shoulder length and wrist trim.

\*\* Including the ruffle allowance.

Compare the stated lengths to the measured or desired lengths. **Lengthen** or **shorten** the top and/or the sleeves by cutting the pattern pieces at the place(s) indicated with double lines on the illustration and then spreading the pattern pieces out X cm from each other or overlapping them where needed. Make sure that the CF and CB lines and the side seams are always straight.



### IMPORTANT

Adjust the amount of fabric to be used based on the alterations.

## supplies



- Thread
- Iron-on interfacing: max. 40 cm
- Buttons (Ø 1.5 cm): 10
- Fabric: see table

fabric used (in cm) F collection	XS	S	M	L	XL	XXL	XXXL
velvet jersey fabric width 145 cm	180	185	185	190	215	220	220
glossy fabric fabric width 150 cm	175	180	185	190	190	215	220

Discover the Fibre Mood fabric collection and the accompanying fabric layouts [here](#) or on [www.fibremood.com/en/fabrics](http://www.fibremood.com/en/fabrics).

fabric used (in cm) standard	XS	S	M	L	XL	XXL	XXXL
fabric width 140 cm	185	185	190	190	215	220	220

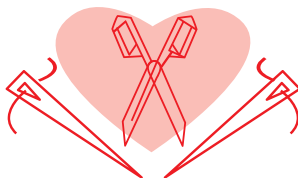
The corresponding fabric layout can be found on the last page of these sewing instructions.

## fabric advice



The versatile Glory top can be made in woven or knitted fabrics. For a wintery version choose a stretch velvet or for an ultra feminine version, go for a finely woven fabric with drape like a crepe or silk chiffon. Tone it down for everyday wear with a chambray, lightweight denim or linen.

# Proud to be #Sewista



# sewing instructions



The method used to finish sewing the garment depends on the fabric used. The pieces are always sewn together with the right sides of the fabric facing together, unless stated otherwise.

F front

B back

RF right front

LF left front

CF centre front

CB centre back



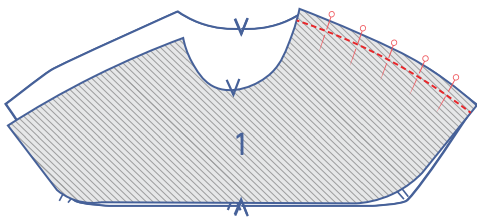
right side



wrong side

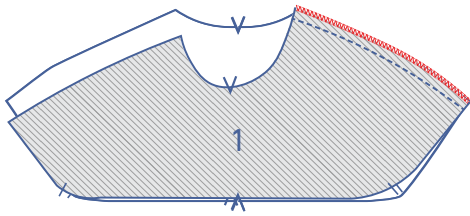


iron-on interfacing

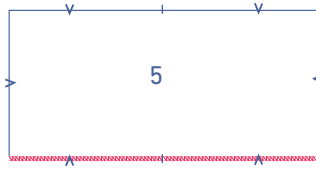


**1**

Pin and sew the indicated shoulder seams of the top front (1) and the top back (3).

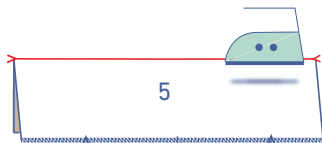


Finish the raw edges together with overlock stitching.

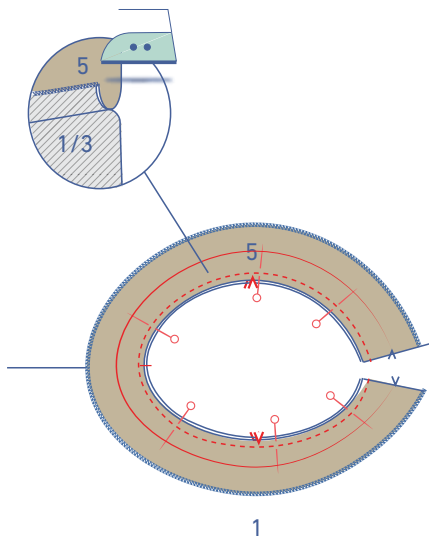
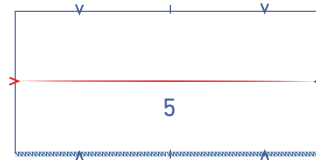


## 2

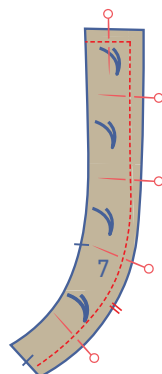
Finish 1 long edge of the collar (5) with overlock stitching.



Fold the collar in half lengthwise with the right side facing outwards to create a fold line. Open back out again.

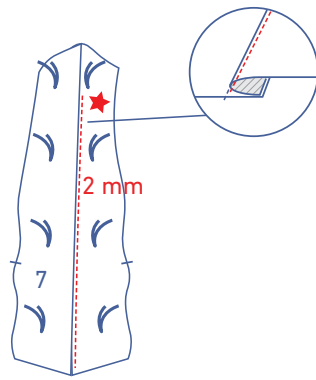


Pin and sew the non-overlocked edge of the collar to the neckline with the corresponding nicks matching.

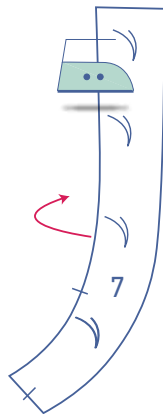


## 3

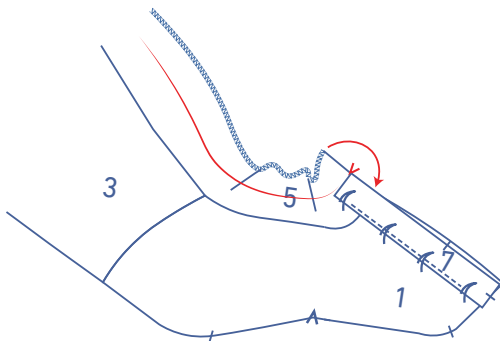
Place the 2 bias strips for the buttonholes (7) with the right sides facing together and sew the short end without the nick and the edge with the double nicks together.



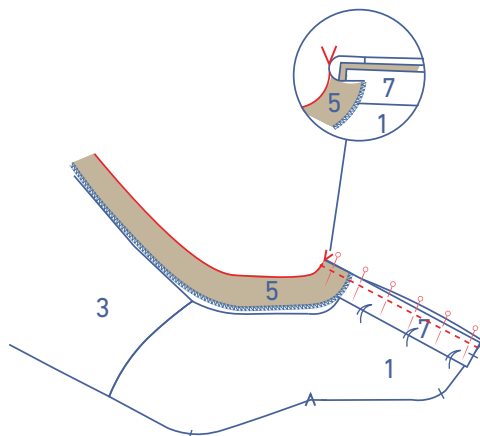
Fold both bias strips open so that they are laying side-by-side and fold the seam allowance towards the bias strip on the right (red star). At 2 mm from the seam, sew through all layers of the bias strip with the red star (bias strip + the underlying seam allowance).



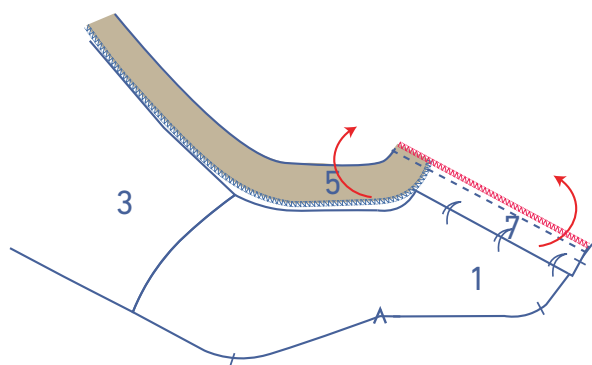
Press the bias strip flat again.



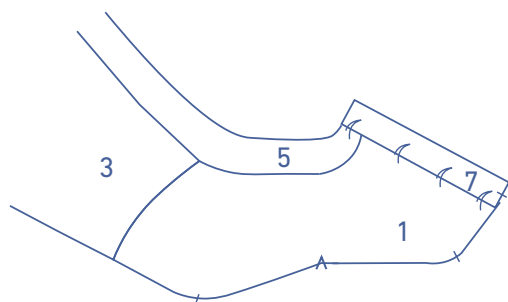
Place both raw edges of this bias strip against the shoulder seam of the top front. The finished short end should match the collar's V notch (and the pressed fold line), while the other short end (with nick) should match the raw edge of the top front.



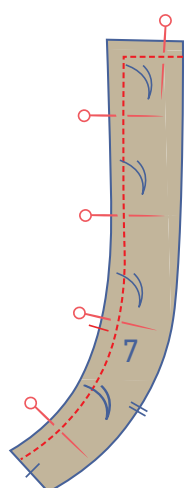
Fold the piece of the collar past the V notch onto the right side so that the bias strip is secured between the 2 layers of the collar fabric. Pin and sew into place.



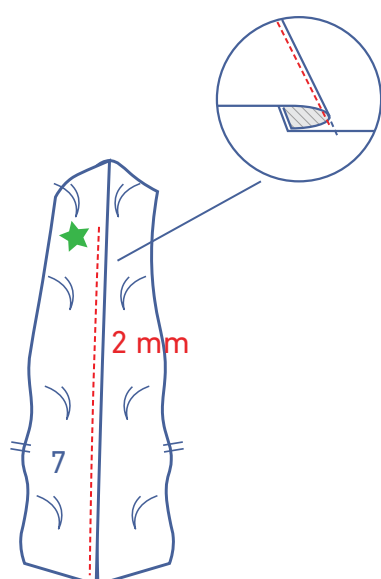
Finish the raw edges together with overlock stitching.



Turn inside out.

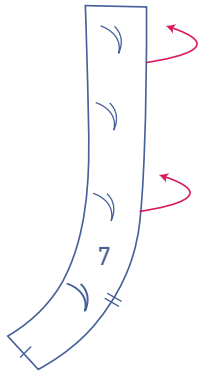


Take the 2 remaining bias strips and pin them together. This time, sew the short end without the nick and the curved edge with the single nick together.

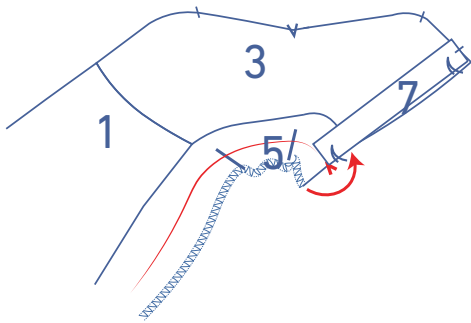


Fold both bias strips open so that they are laying side-by-side and fold the seam allowance towards the bias strip on the left (green star). At 2 mm from the seam, sew through all layers of the bias strip with the green star (bias strip + the underlying seam allowance).

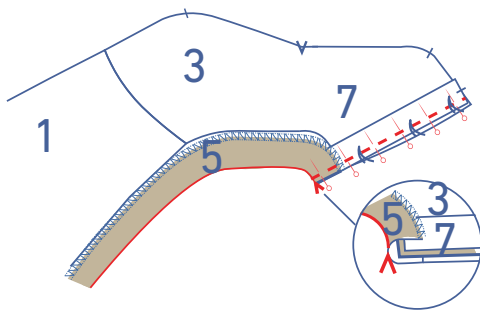




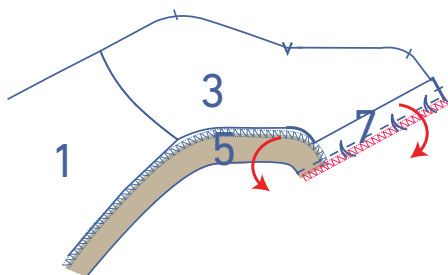
Press the bias strip flat again.



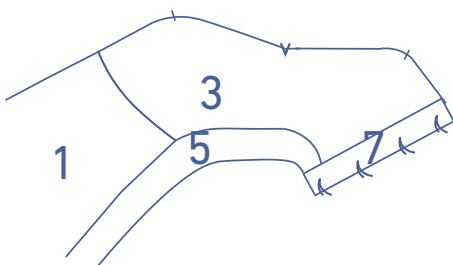
Place both raw edges of this bias strip against the shoulder seam of the top back. The finished short end should match the collar's V notch (and the pressed fold line), while the other short end (with nick) should match the raw edge of the top back.



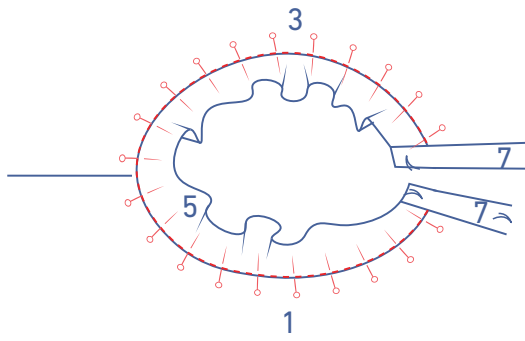
Fold the piece of the collar past the V notch onto the right side so that the bias strip is secured between the 2 layers of the collar fabric. Pin and sew into place.



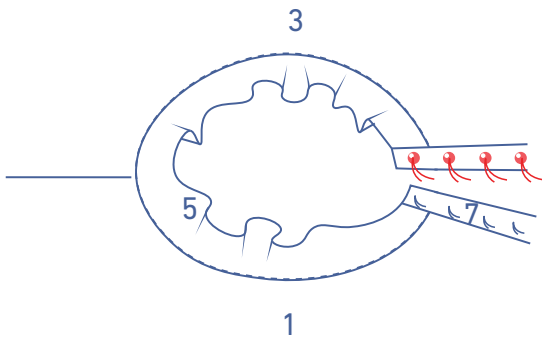
Finish the raw edges together with overlock stitching.



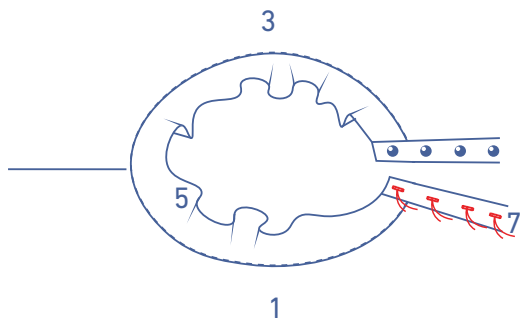
Turn inside out.



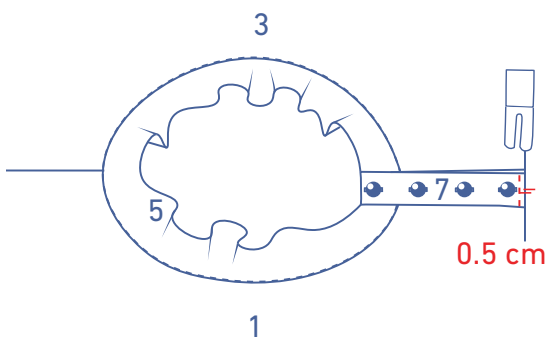
Neatly pin the collar into place around the right side of the piece. Stitch in the ditch of the starting seam.



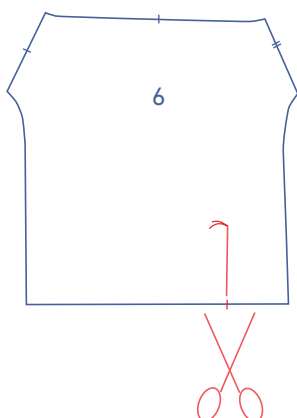
Sew the buttons on the bias strip of the back. The button locations are indicated on the pattern.



Make the buttonholes on the bias strip of the front, so that they line up with the buttons.



Place the bias strip of the front neatly onto the bias strip of the back with the corresponding nicks matching. Sew together at 0.5 cm from the end.



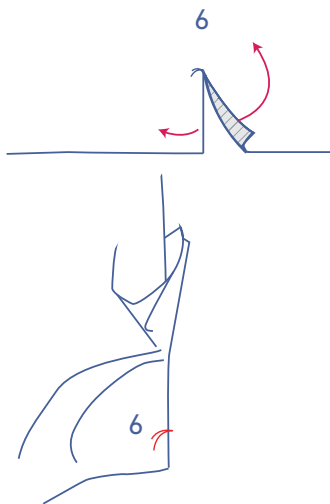
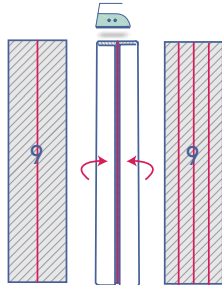
## 4

Cut the sleeve (6) from the nick at the bottom up to the basting thread.

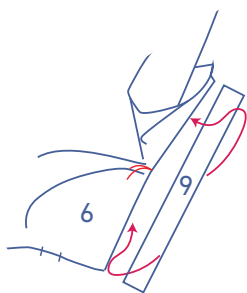


Press the bias sleeve placket (9) over as follows:

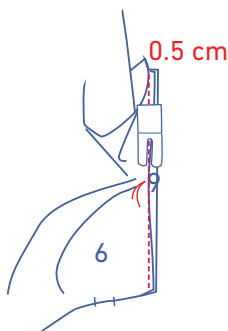
- Start by pressing the entire bias strip in half lengthwise and then open back out again.
- Next, press the long sides in to meet the centre line.
- Open back out again.

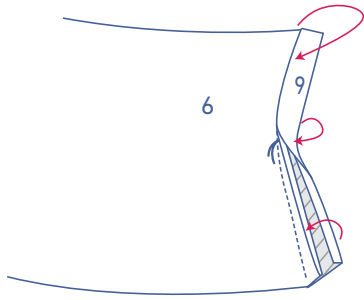


Open the sleeve split so that you end up with a single straight line.

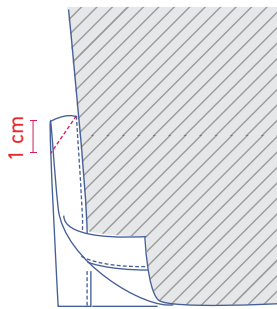
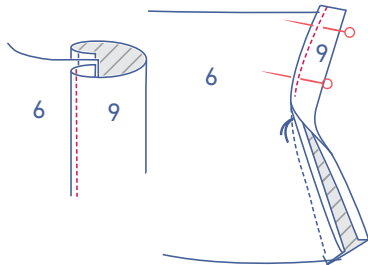


Slide the bias placket strip under the sleeve with the right side facing up. Match the raw edges together and pull the sleeve a bit to the side at the basting thread. Sew a line 0.5 cm parallel to the raw edge. Only a few fabric threads have been sewn in place at the basting thread.

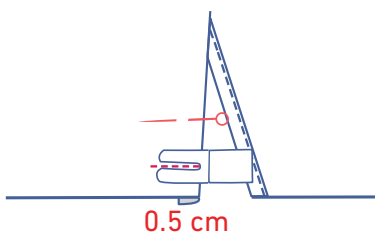




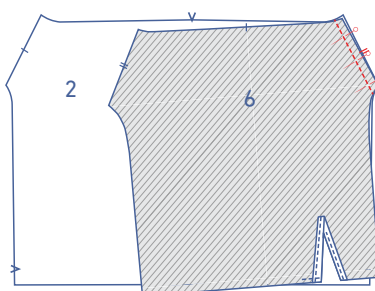
Fold the bias strip onto the right side of the sleeve and place the folded edge directly over the previous stitching. Sew into place right next to the edge.



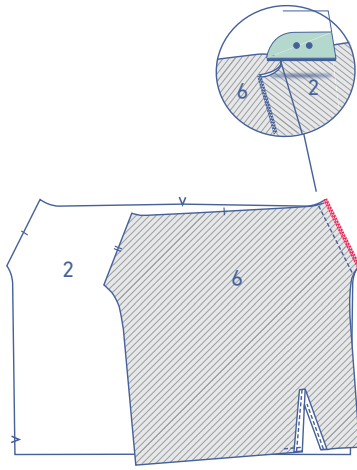
Fold the sleeve in half lengthwise, with the right side of the fabric facing inwards. Sew the tops of the bias placket in a diagonal line, starting from the inside corner. Open the sleeve back out.



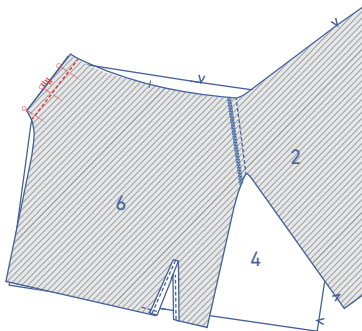
Fold the bias strip on the sleeve front (i.e., the widest edge of the sleeve hem) over to the wrong side of the sleeve and sew the bias strip into place at 0.5 cm from the bottom.



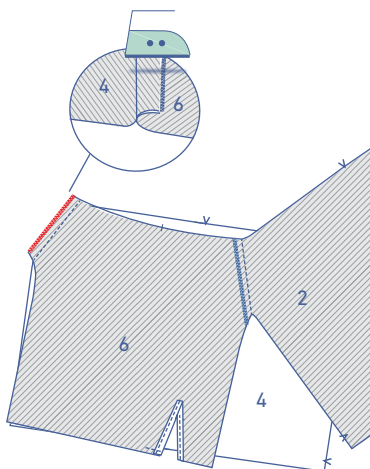
Pin and sew the slanted edge of the sleeve with a single nick to the slanted edge of the front (2) with the corresponding nicks matching.



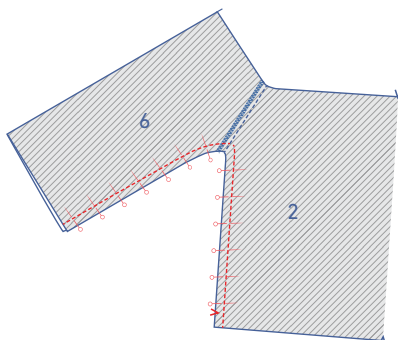
Finish the raw edges together with overlock stitching. Press the seam allowance towards the sleeve.



Pin and sew the slanted edge of the sleeve with the double nicks to the slanted edge of the back (4) with the corresponding nicks matching.

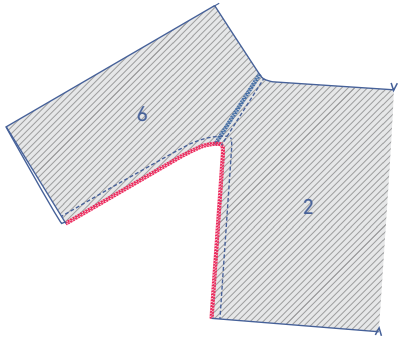


Finish the raw edges together. Press the seam allowance towards the sleeve.

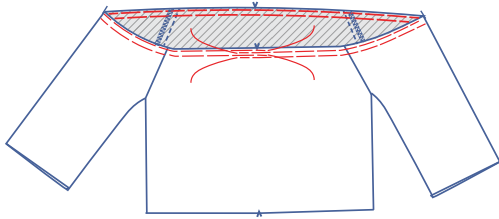


## 5

Pin and sew the side and underarm seams.

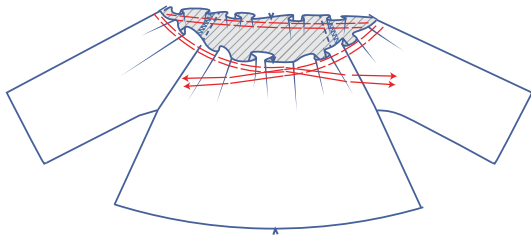


Finish the raw edges together with overlock stitching.

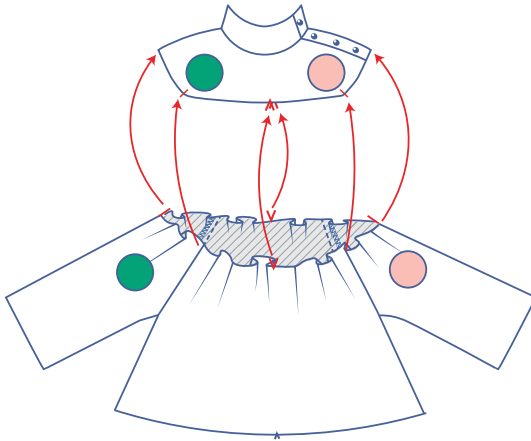


## 6

Using a long stitch length and a low thread tension, sew 2 parallel rows basting stitch around the top edge, without backstitching at the start and finish. Leave a long tail of thread, ready for the next step.

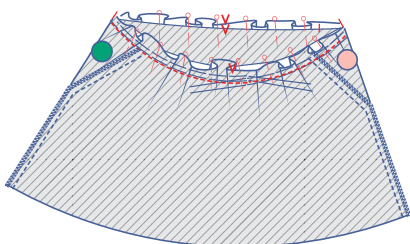


Carefully tug the ends of the threads to pull the fabric into gathers.

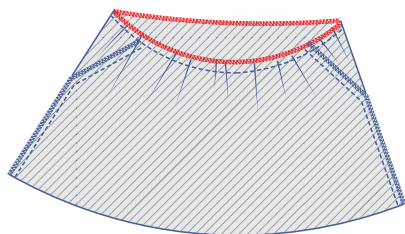


Place the lower edge of the top piece and the upper edge of the front + back + sleeves with the right sides facing together. Distribute the ruffles evenly, so that the nicks match neatly. Pin into place:

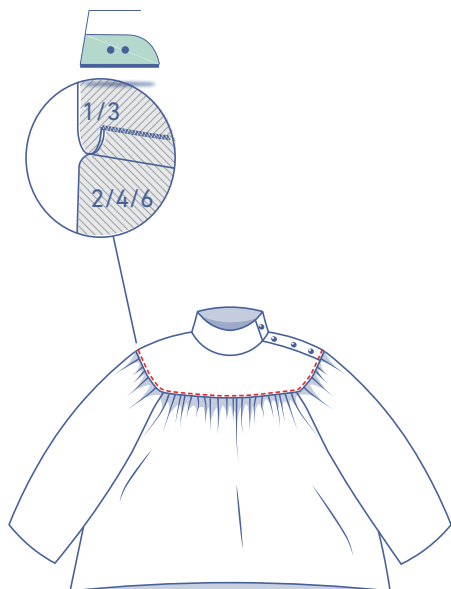
- The seams of the raglan sleeves should match each of the single nicks on the top's front and back.
- The nick in the middle of the left sleeve should match the starting seam of the bias strip with the buttonholes on the left side of the top.
- The nick in the middle of the right sleeve should match the right shoulder seam of the top.



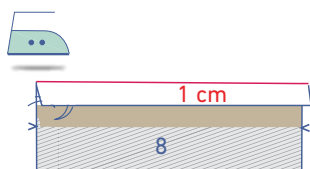
Sew into place between the two gathering threads and remove when done.



Finish the raw edges together with overlock stitching.

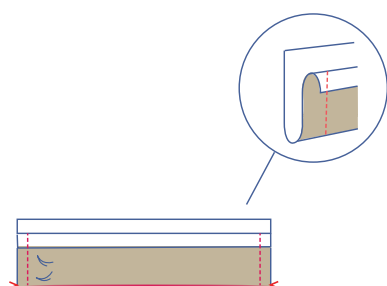


Press the seam allowance towards the top. From the outside, topstitch the top right next to the seam.



## 7

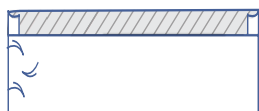
For the long side of the wrist trim (8) (on the side where the buttons and buttonholes are located), press 1 cm of seam allowance over to the wrong side.



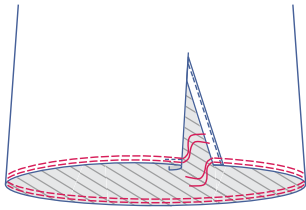
Fold the wrist trim in half lengthways at the V notches with right sides facing. Sew the short ends.



Trim the seam allowance at the corners.

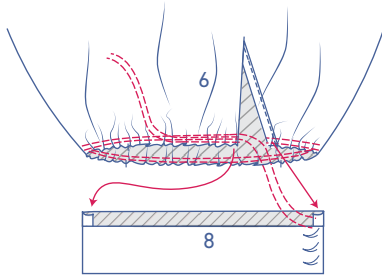


Turn the right way out.

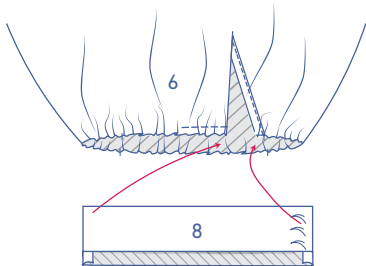


## 8

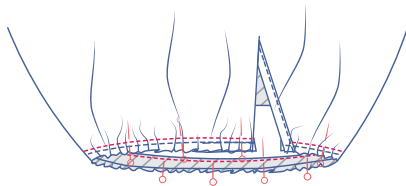
Using a long stitch length and a low thread tension, sew 2 parallel rows of basting stitching along the lower edge.



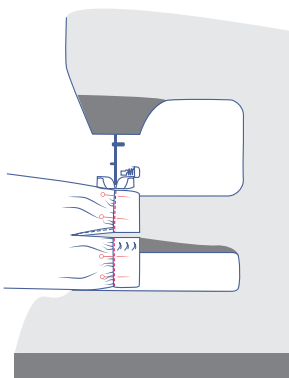
Carefully tug the ends of the threads to pull the fabric into gathers. The bottom of the sleeve needs to be perfectly aligned with the wrist trim.



Slide the wrist trim into the sleeve.



Pin the raw edge of the right side of the wrist trim to the lower edge of the inside sleeve. Distribute the gathers evenly. Sew into place. Remove the gathering threads when you're done.



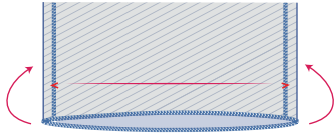
Fold the wrist trim towards the right side of the sleeve and place the fold line (of the pressed over seam allowance) directly over the previous stitching. Sew into place right next to the edge.



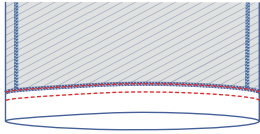
## 9

Finish the hem with overlock stitching.



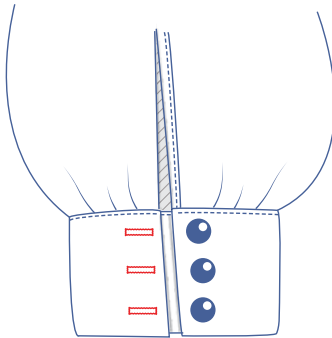
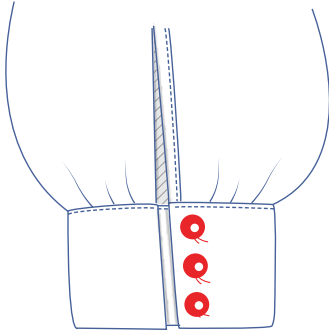


Fold the hem up at the V notches and sew the hem allowance into place.



## 10

Sew the buttons on at the places indicated on the wrist trim.



Make the horizontal buttonholes based on the location of the buttons.

## pattern pieces & seam allowances (in cm)

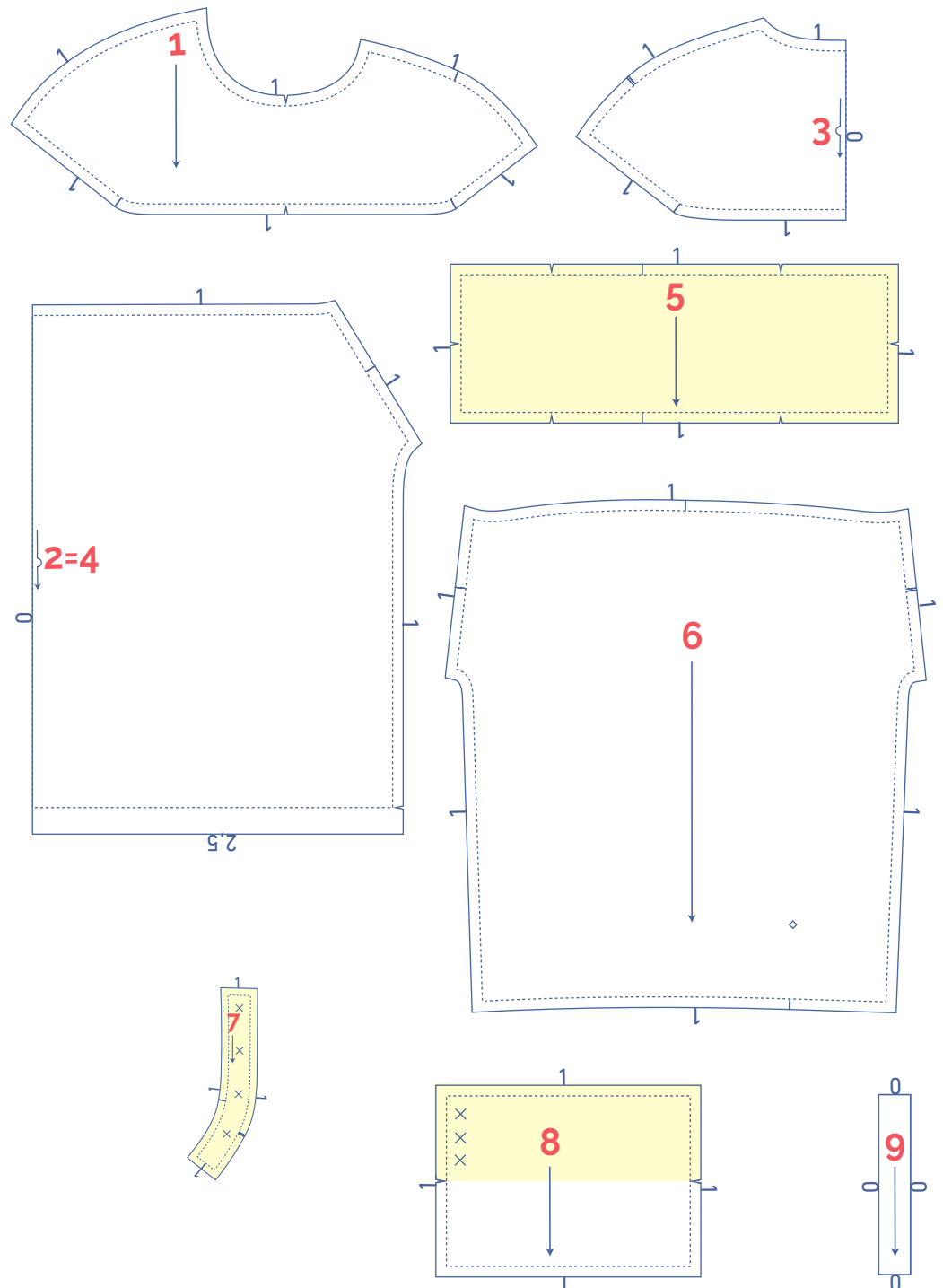
To sew the garment together as described in the instructions, you must draw the illustrated seam allowances around the paper pattern pieces before cutting them out.

1. top front piece: 1x
2. F: 1x on fabric fold
3. top back piece: 1x on fabric fold
4. B: 1x on fabric fold
5. collar: 1x
6. sleeve: 2x
7. button bias strip/buttonholes: 4x
8. wrist trim: 2x
9. bias sleeve placket: 2x

**IMPORTANT:** Pattern pieces 2 and 4 are the same. Nick pattern piece 2 with a single vertical line and pattern piece 4 with a double.

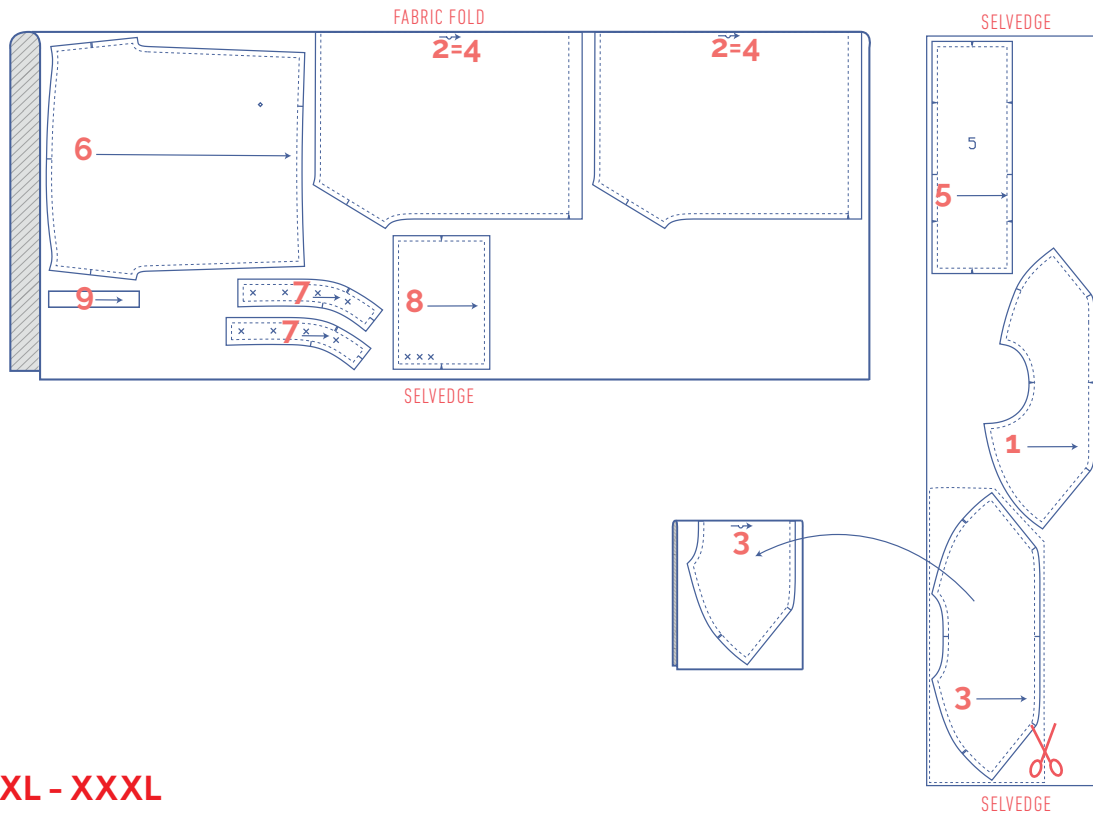
**IMPORTANT**

The pieces highlighted in light yellow have iron-on interfacing attached to the wrong side.

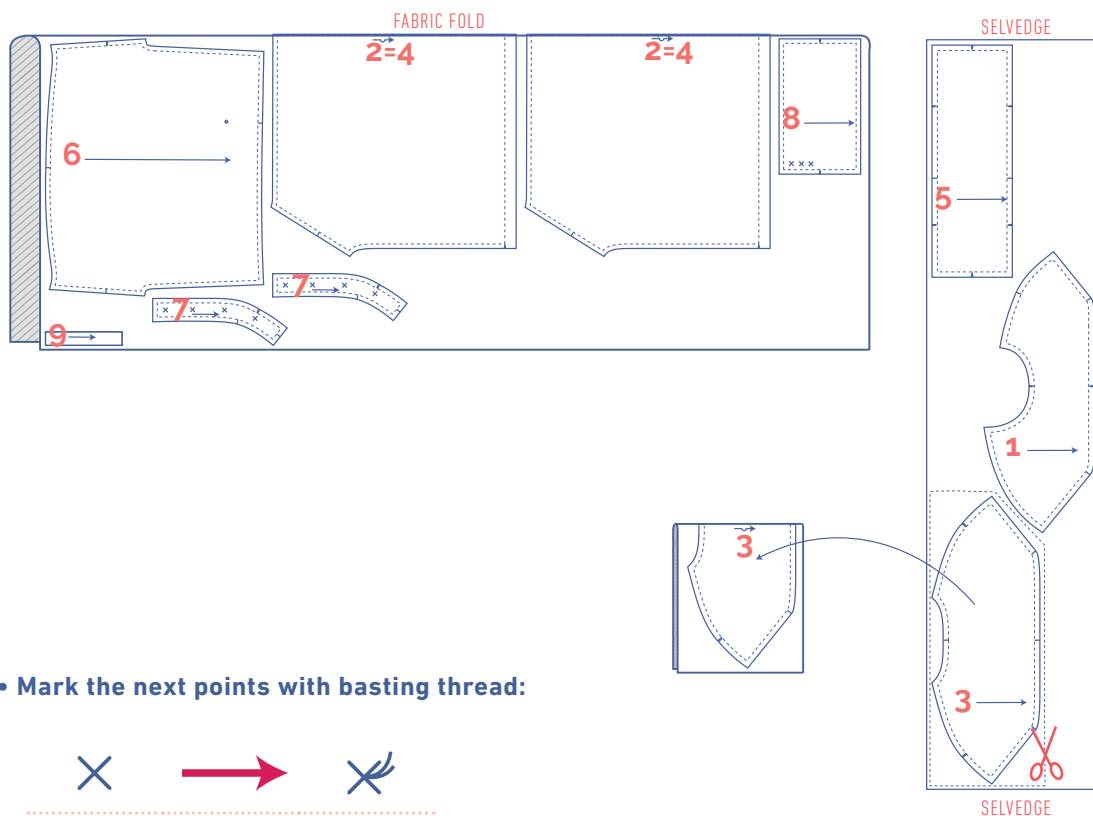


# fabric layout for fabrics 140 cm wide

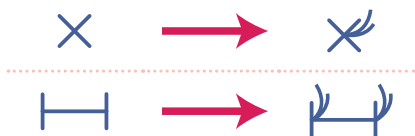
XS - L



XL - XXXL



- Mark the next points with basting thread:



- Nick the pattern paper and fabric at the places where a single vertical line (I) and double vertical lines (II) are indicated.
- Cut a small corner out of the fabric at a V notch symbol or on the finished hemline.
- Cut a small corner (V notch) out of the pieces that lie on the fabric fold (—) to mark the middle of these pieces.