

Isra by Fibre ood



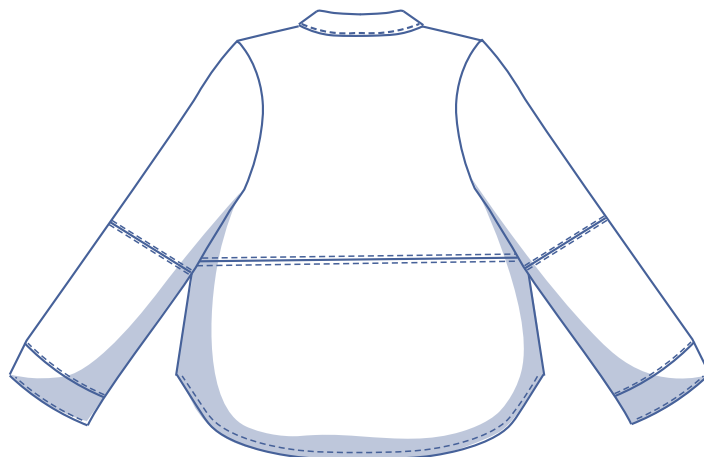
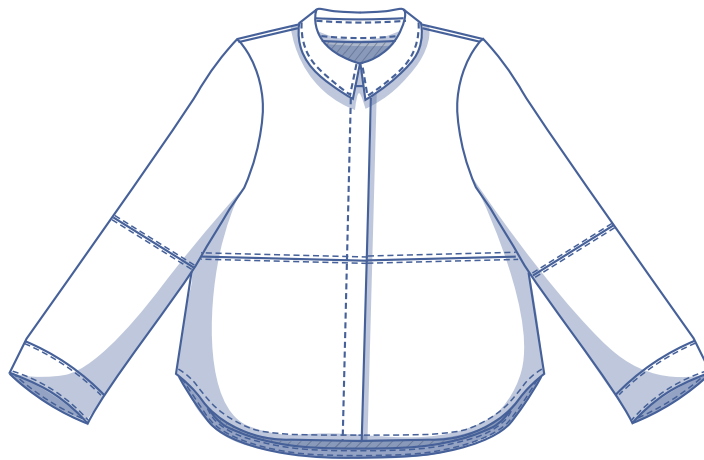
Isra by Fibre ⚡ood

***✂✂



0 - 26

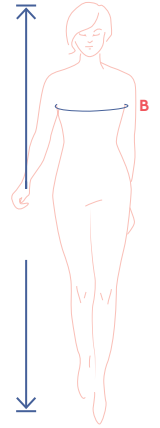
This blouse in leather (or leatherette!) says alluring and on-point like no other. It goes without saying that it's also dripping with style, with a minimalistic cut and hidden button placket. It looks great worn out, but is also stunning tucked in, or tied at the bottom. Bias tape is used to finish the hem. The set in sleeves are straight and finished with simple wrist trim. The seams under the bust and halfway down the sleeves are typical features of leather garments. Not crazy about the lapped seams or would you like to sew the blouse in a different kind of fabric? No problem. Just tape the pattern pieces together, and you're done!



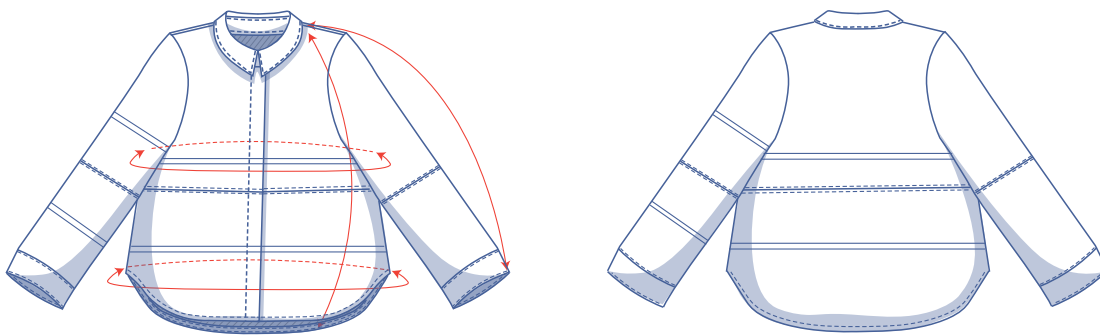
size chart (in inches)

size	US	0	2	4	6	8	10	12	14	16	18	20	22	24	26
	EUR	32	34	36	38	40	42	44	46	16	50	52	54	56	58
H (height)		5'24"	5'38"	5'45"	5'48"	5'51"	5'54"	5'58"	5'61"	5'64"	5'64"	5'64"	5'64"	5'64"	5'64"
B (bust)		29.9	31.5	33.1	34.6	36.2	37.8	39.4	40.9	43.3	45.7	48	50.4	52.8	55.1

Choose your size based on your bust measurement. If your hip measurements are wider than those in the size chart, check the hem circumference in the chart below to see if there's enough room or whether the pattern needs to be altered. It's easy to do. Simply trace the line of the one size instead of the other.



pattern measurements (in inches)



— shorten or lengthen the pattern here

This chart's measurements are the pattern measurements based on the fabric type and serve as a reference. Ease has been added to the width measurements (in addition to the exact body measurements) for a more comfortable fit. Isra is designed to have a loose cut. Depending on the preferred cut, you could decide to go a size smaller or larger than the recommended size.

size	0	2	4	6	8	10	12	14	16	18	20	22	24	26
length	26.2	26.3	26.4	26.5	26.6	26.7	26.8	26.9	27.1	27.3	27.5	27.7	27.8	28
sleeve length*	27.3	27.4	27.6	27.7	27.8	27.9	28	28.1	28.3	28.5	28.6	28.8	28.9	29.1
bust	34.7	36.2	37.8	39.4	41	42.6	44.2	45.8	48.2	50.5	52.9	55.3	57.6	60
hem circumference**	40.9	42.4	43.9	45.4	47	48.5	50	51.6	53.7	56	58.3	60.6	63	65.3

* Including the shoulder length and cuff.

** At the slit.

Compare the stated lengths to the measured or desired lengths. **Lengthen** or **shorten** the blouse and/or sleeves by cutting the pattern pieces at the indicated double lines. Then either increase the distance between the cut pieces by the desired amount (to lengthen), or overlap the pieces (to shorten). Make sure that the CF and CB lines and the side seams are always straight.

IMPORTANT

Adjust the amount of fabric to be used based on these alterations.



notions



- Thread
- Iron-on interfacing: 0.71 yd
- Bias tape: see table
- Buttons (Ø 7/16"): 6
- Fabric: see table

bias tape		0	2	4	6	8	10	12	14	16	18	20	22	24	26
length	yd	1.55	1.59	1.63	1.67	1.71	1.76	1.80	1.84	1.91	1.97	2.04	2.10	2.17	2.24

fabric		0	2	4	6	8	10	12	14	16	18	20	22	24	26
fabric width 43"	yd	2 ¼	2 ¼	2 ¼	2 ¾	2 ¾	2 ¾	2 ¾	2 ¾	3	3	3	3	3	3 ¼
fabric width 55"	yd	1 ½	1 ¾	1 ¾	1 ¾	1 ¾	1 ¾	2	2 ¼	2 ¼	2 ¼	2 ¼	2 ¼	2 ½	2 ½

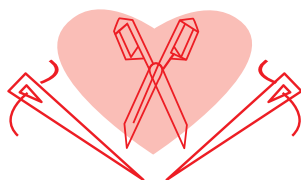
The corresponding fabric layout can be found starting on page 6 of these sewing instructions.

fabric advice



The sturdy texture of leather(ette), suede(tte) and denim add structure to this clean, minimalist look. Prefer poplin, linen or Tencel? No worries. It's all good, as long as you steer clear of fabrics that are too fluid or thin.

Proud to be #Sewista



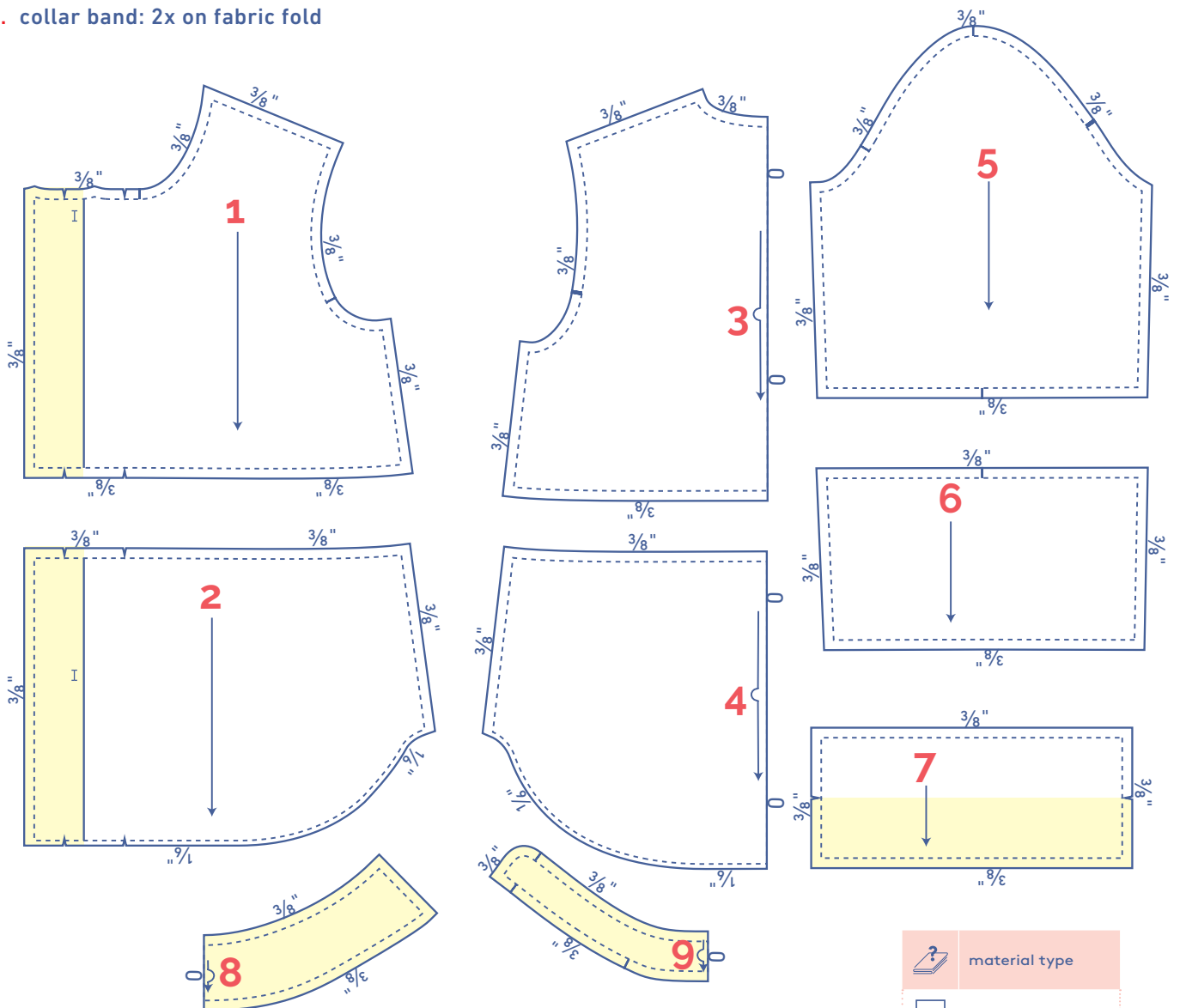
pattern pieces & seam allowances (in inches)

To sew the garment as described in the instructions, you need to draw the illustrated seam allowances around the paper pattern pieces before cutting them out. If you are using a PDF pattern, the pattern can be printed with or without seam allowances. To find out more, check out the [video](#).



1. top piece front: 2x
2. bottom piece front: 2x
3. top piece back: 1x on fabric fold
4. bottom piece back: 1x on fabric fold
5. sleeve top piece: 2x
6. sleeve bottom piece: 2x
7. cuff: 2x
8. collar: 2x on fabric fold
9. collar band: 2x on fabric fold

IMPORTANT

The pieces highlighted in light yellow have iron-on interfacing attached to the wrong side.

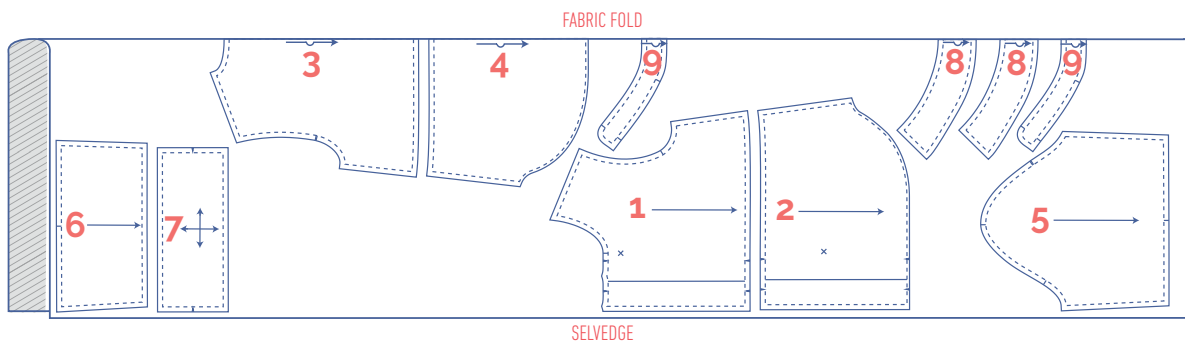


Note: we used bias tape to finish the hem so that the hemline wouldn't look too heavy. You could also just increase the hem allowance on pattern pieces 2 and 4 and stitch a blind hem.

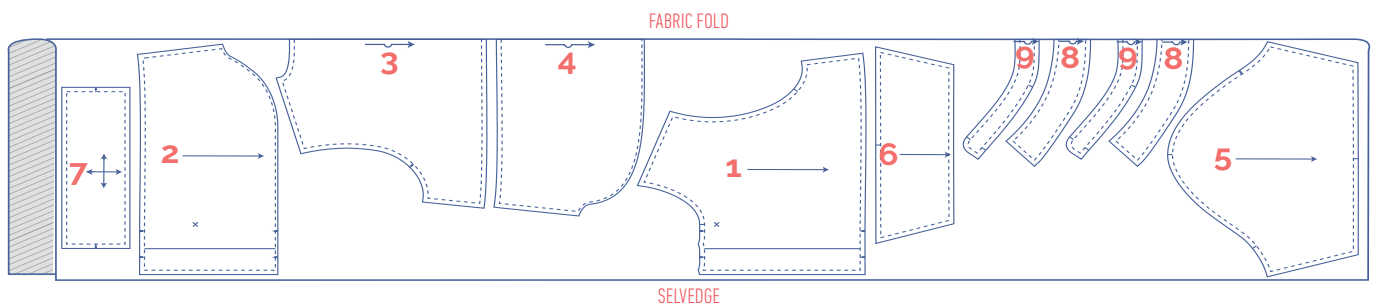
?	material type
	fabric
	iron-on interfacing

fabric layout – solid fabrics
fabric width 43"

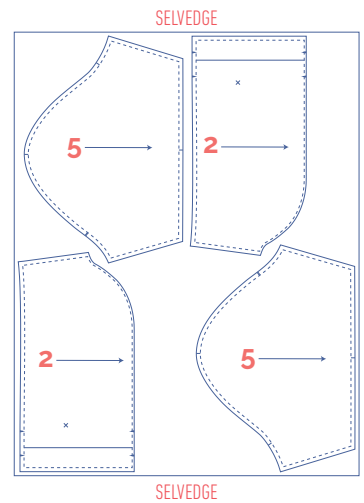
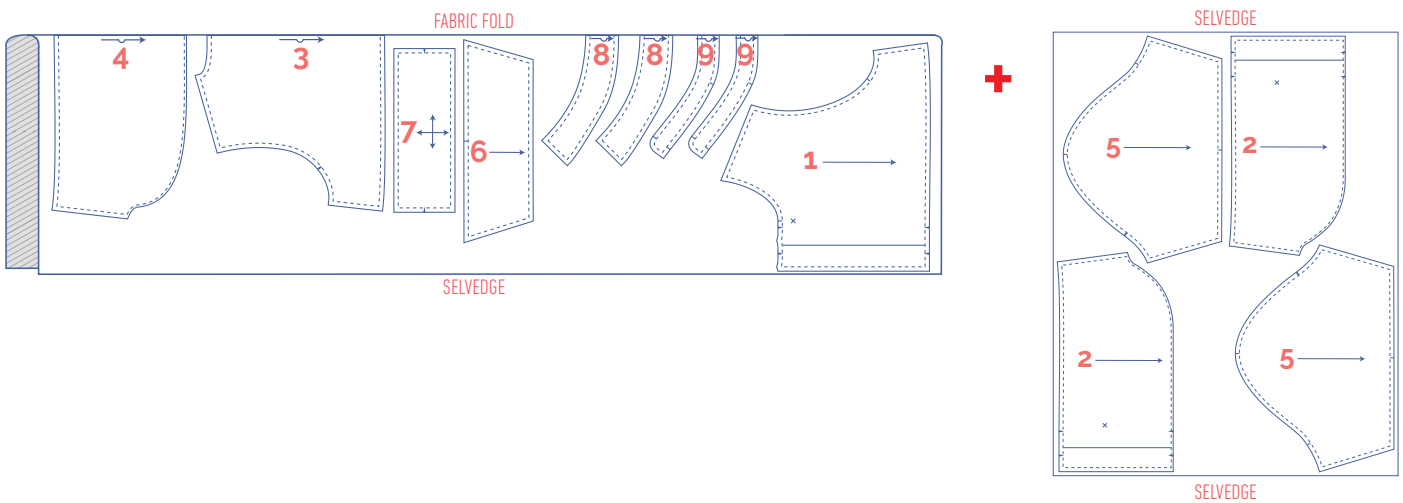
0 - 6



8 - 24



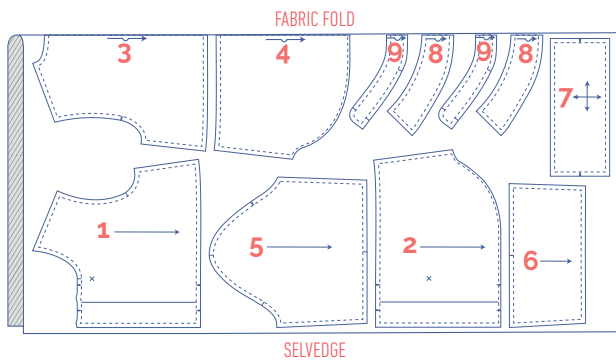
26



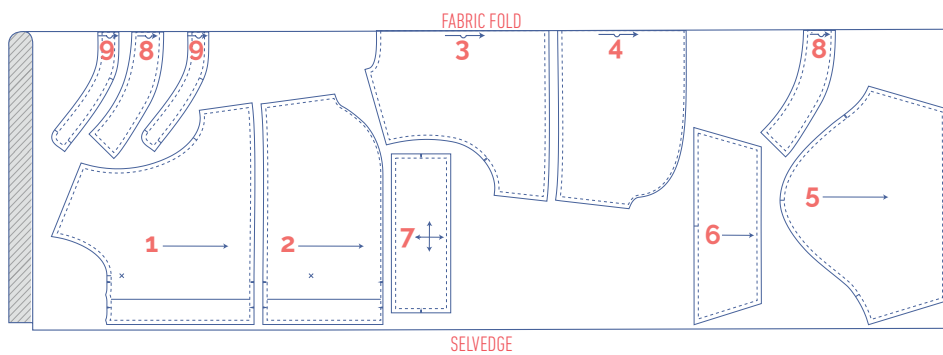
fabric layout – solid fabrics

fabric width 55"

0 - 6



8 - 26



marking pattern pieces

	Notch the pattern paper and fabric at the following points		Mark the following points using marking thread
	single notch		buttons
	double notch		buttonhole
	V notch		

sewing instructions



The pieces are always sewn together with the right sides of the fabric facing, unless stated otherwise.

NOTE

Leatherette doesn't fray, which means you don't really need to finish the edges. The illustrations do, however, show you when overlocking is needed.

Use a Teflon presser foot to ensure a smooth fabric feed.

You could also use a dual feed presser foot or put a piece of paper between the fabric and the presser foot. Avoiding pinning leather or leatherette because it will leave holes in the fabric.

Paper clips are a handy alternative. Use a regular to long stitch length.

F front

B back

RF right front



LF left front



CF centre front



right side



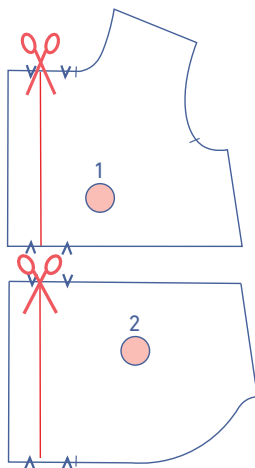
wrong side



bias tape

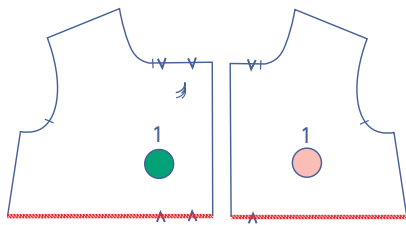


iron-on interfacing

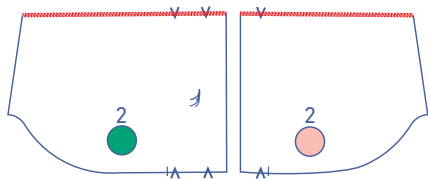
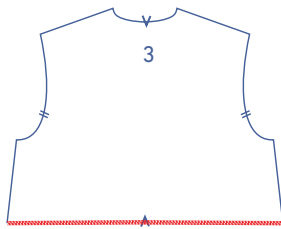


1

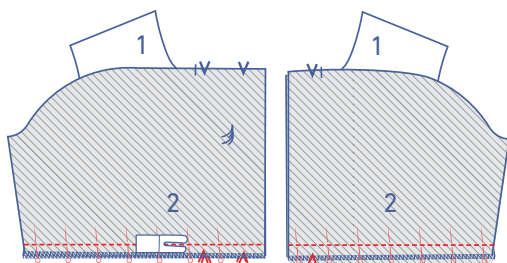
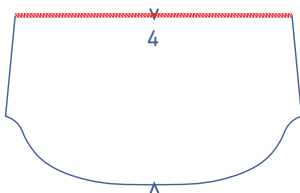
Cut off a strip from all the LF pieces (top piece front [1], bottom piece front [2]) along the indicated cutting line.



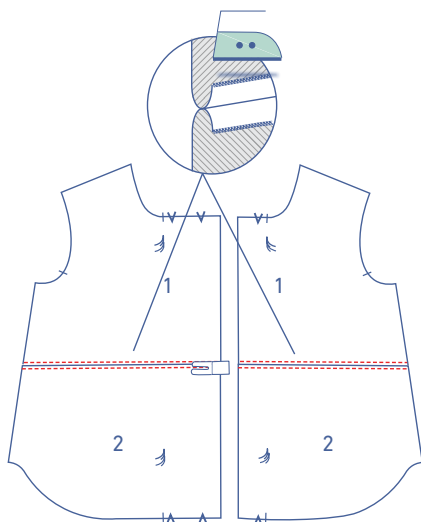
Finish the bottom of the top piece front (1) and top piece back (3) with overlock stitching.



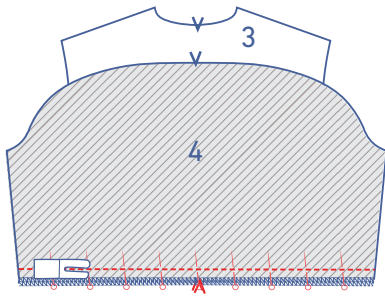
The top of the bottom piece front (2) and bottom piece back (4) should also be finished with overlock stitching.



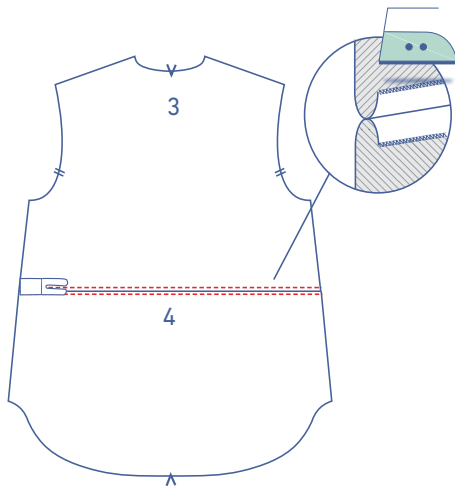
Pin and sew the top piece front and bottom piece front together.



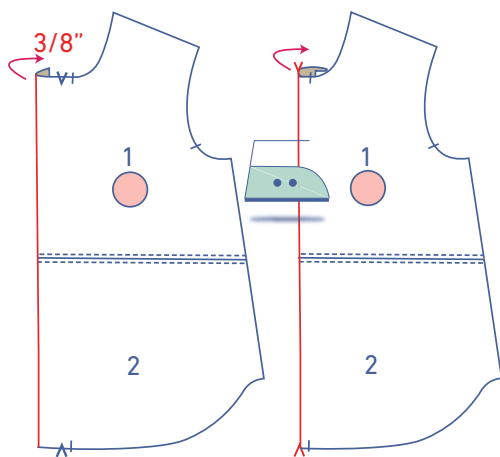
Press the seam allowance open and topstitch just above and below the seam.



Pin and sew the top piece back and bottom piece back together.

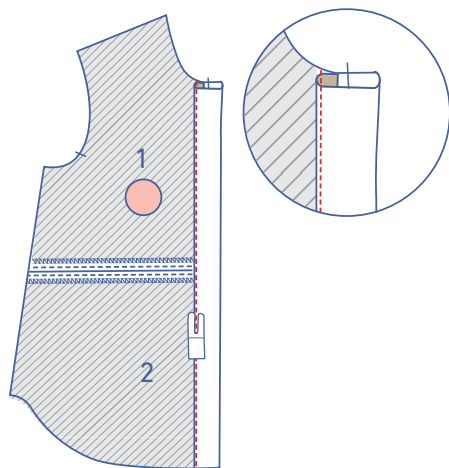


Press the seam allowance open and topstitch just above and below the seam.

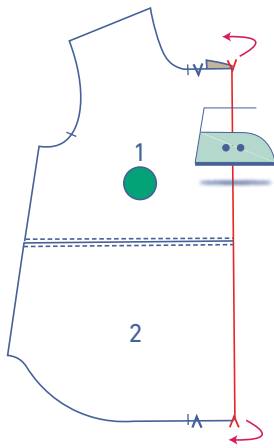


2

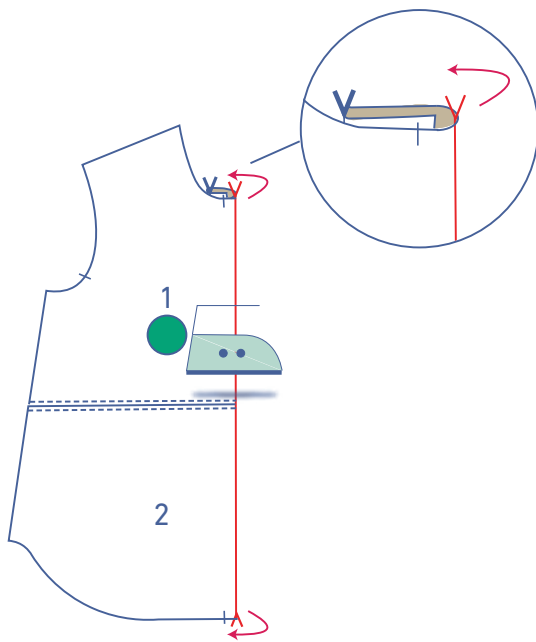
First, press the LF piece at the CF $\frac{3}{8}$ " over towards the wrong side. Now, press again, this time from the V notches at the top and bottom.



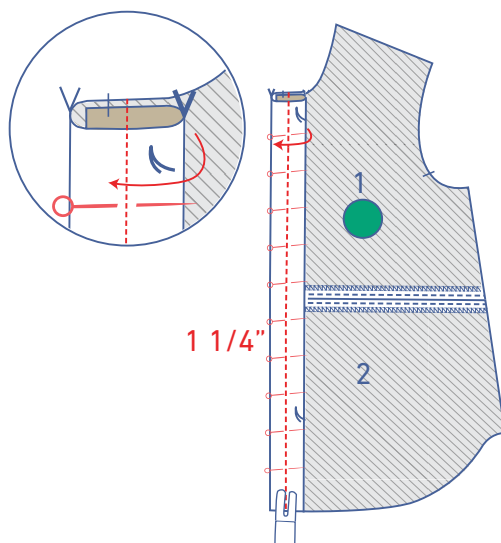
Stitch into place right next to the edge.



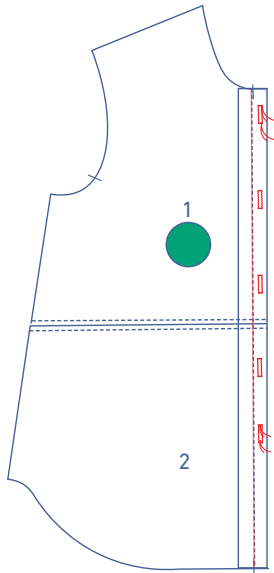
Press the RF piece over from the outermost V notches at the top and bottom.



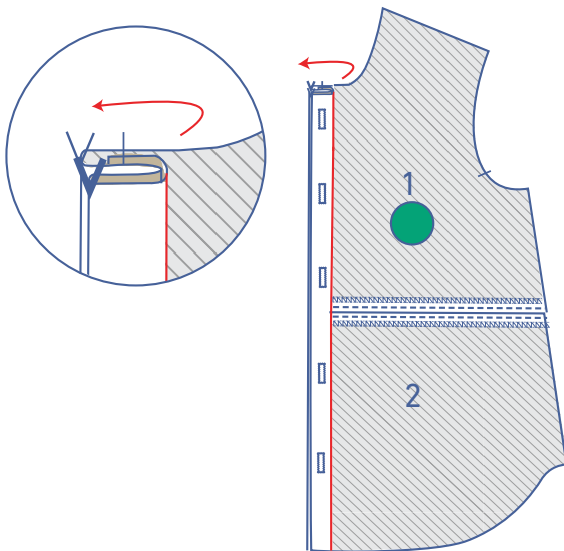
Now, press again, this time from the V notches at the top and bottom highlighted in red.



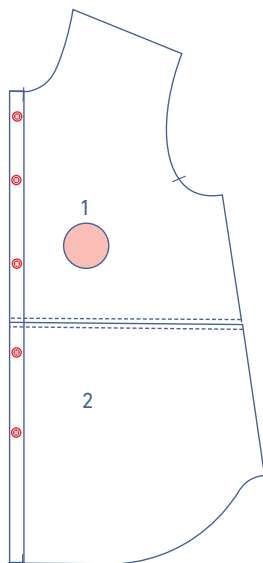
Sew down the centre of the buttonhole placket through all layers of fabric (at 1 1/4" from the edge).



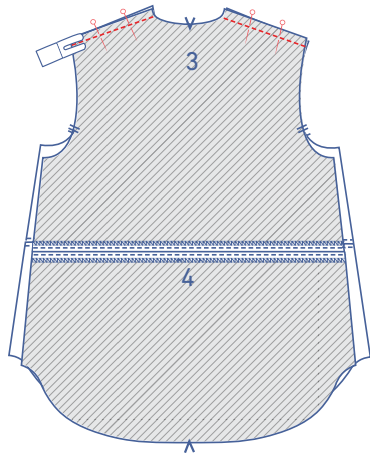
Create vertical buttonholes on the right half of the buttonhole placket. The top and bottom buttonholes have been marked on the pattern. Distribute the remaining buttonholes evenly between the top and bottom buttonholes.



Fold the buttonhole placket in half lengthwise along the stitching.

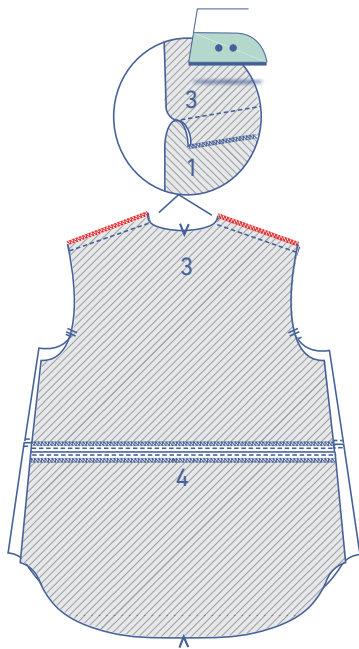


Attach the buttons to the LF piece to match the buttonholes.

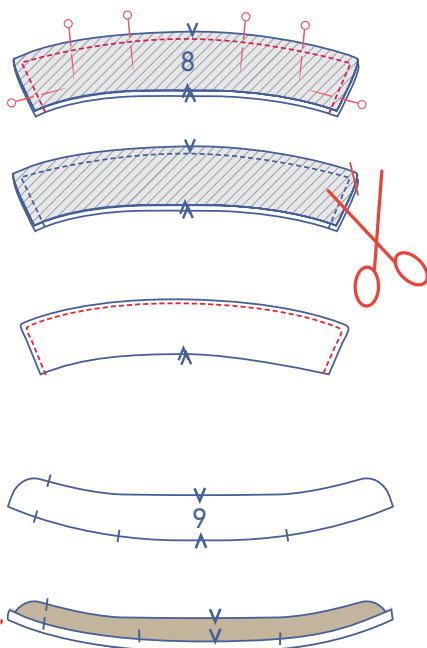


3

Pin and sew the shoulder seams.



Finish the raw edges together with overlock stitching and press the seam allowance towards the front.



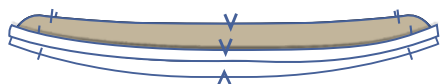
4

Place the two collars (8) on top of each other, right sides together. Pin and sew the contours of the collars (8) together, except for the bottoms.

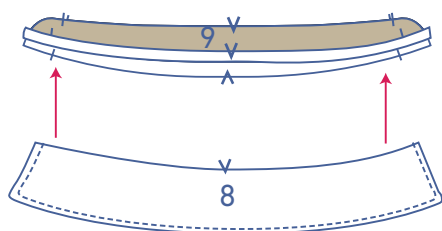
Trim the seam allowance from the corners.

Turn the right way out and topstitch right next to the edge.

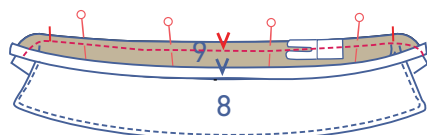
Press one of the two collar bands (9) at the bottom $\frac{3}{8}$ " over to the wrong side.



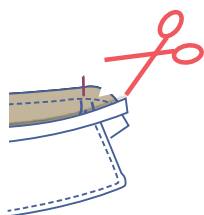
Stack the collar bands on top of each other with the right sides facing. The collar band with the pressed bottom should be on top.



Slide the completed collar between the collar bands so all the raw edges are aligned.



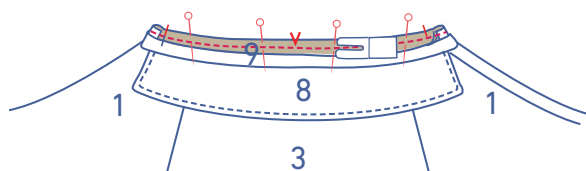
Pin and sew the pieces together.



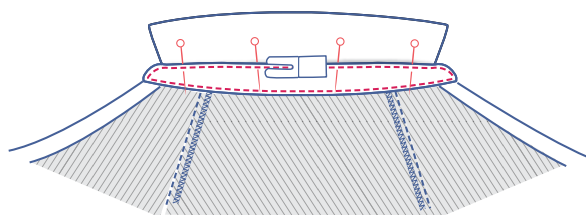
Trim the seam allowances at the curves to prevent any bunching.



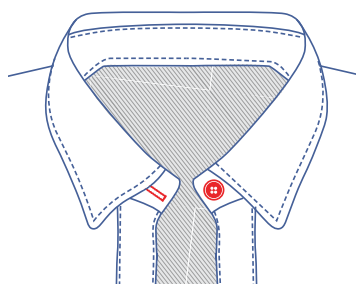
Now, turn the collar bands the right way out.



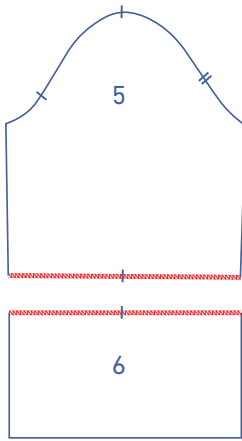
Pin and sew the unpressed bottom of the collar band to the neckline along the right side of the neckline.



Fold the collar band with the pressed bottom over towards the wrong side of the neckline. The fold line should be directly over the previous stitching. Pin and sew into place. Finish stitching the collar band closed.



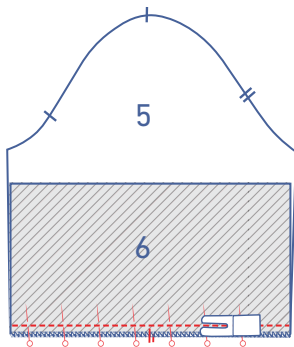
Make a horizontal buttonhole on the collar band of the RF piece. Attach the button to the collar band on the LF piece to match the buttonhole.



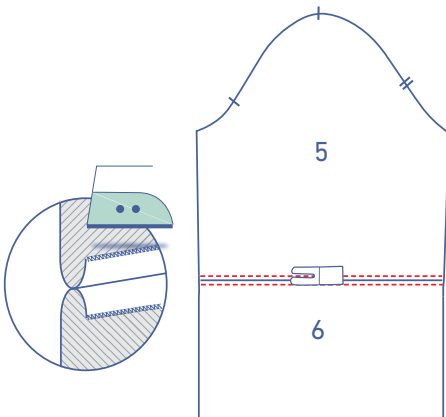
5

Finish the seams at the bottom of the sleeve top piece (5) and the top of the sleeve bottom piece (6) with overlock stitching.

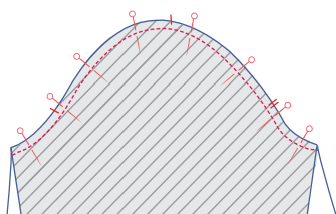
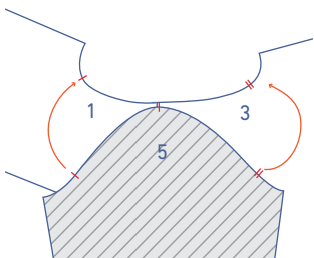
Pin and sew both pieces together with the notches matching.

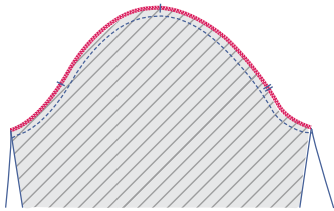


Press the seam allowance open and topstitch just above and below the seam.

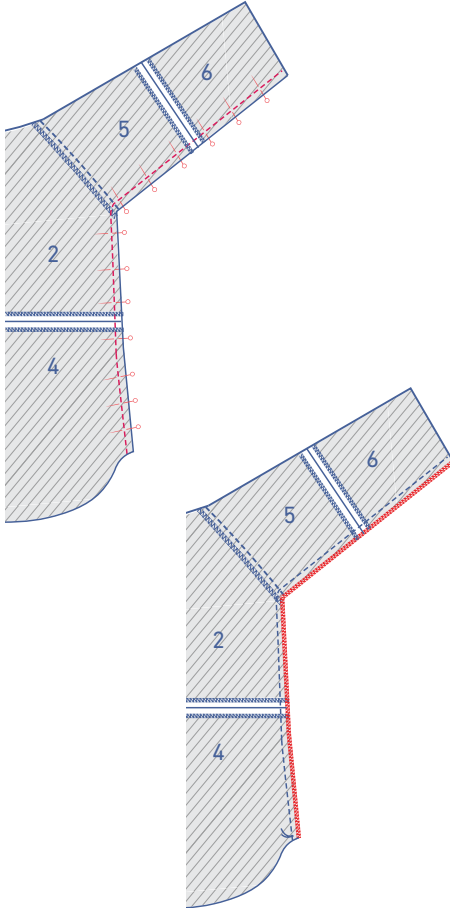


Pin and sew the sleeve cap to the armhole, matching the notches. The single notch marks the front, while the double notch marks the back. The single notch at the top should align with the shoulder seam.





Finish the raw edges together with overlock stitching.



Pin and sew the side and underarm seams into place.

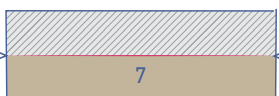
Finish the raw edges together with overlock stitching.

6

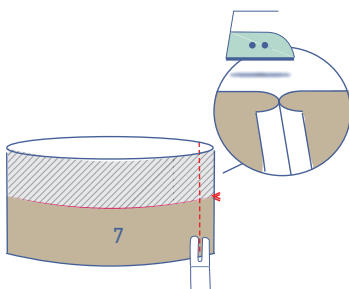
Press the cuff (7) in half lengthwise with the wrong sides of the fabric touching to create a fold line.

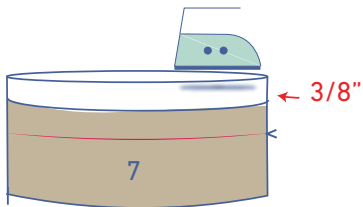


Open back out.



Next, fold the cuff in half crosswise with the right sides of the fabric touching. Pin and sew the short ends together. Press the seam allowance open.

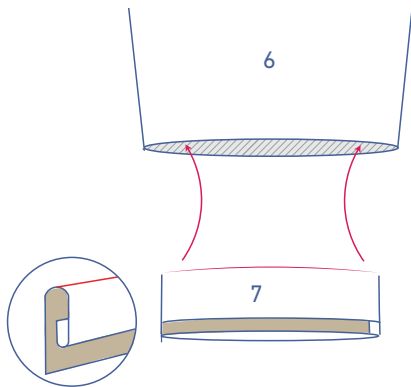




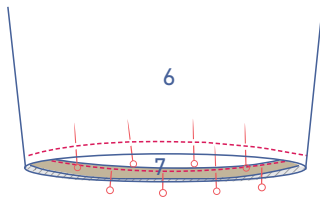
Press one end $\frac{3}{8}$ " down onto the wrong side.



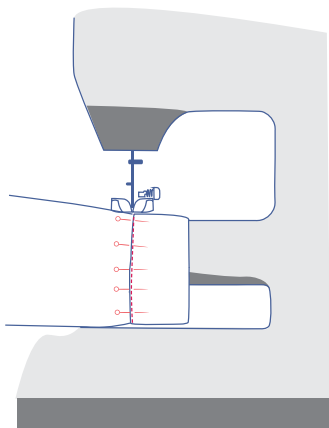
Fold the cuff down along the fold line.



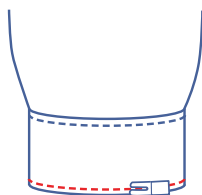
Slide the cuff into the sleeve.



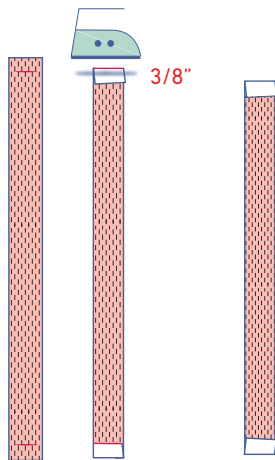
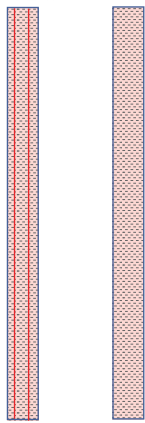
Pin and sew the unpressed raw edge to the wrong side of the sleeve.



Fold the cuff over towards the right side of the sleeve and place the fold line (of the pressed seam allowance) directly on top of the previous stitching. Stitch into place right next to the edge.



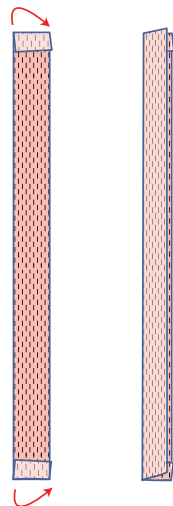
Finish by edge stitching all the way around.



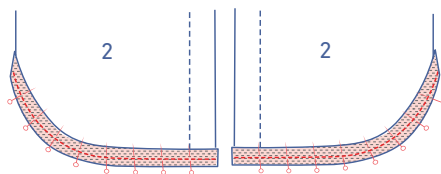
7

Open the bias tape for the hemline all the way out and press.

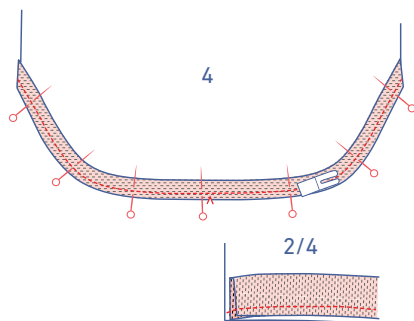
Press the short ends $\frac{3}{8}$ " over towards the wrong side.

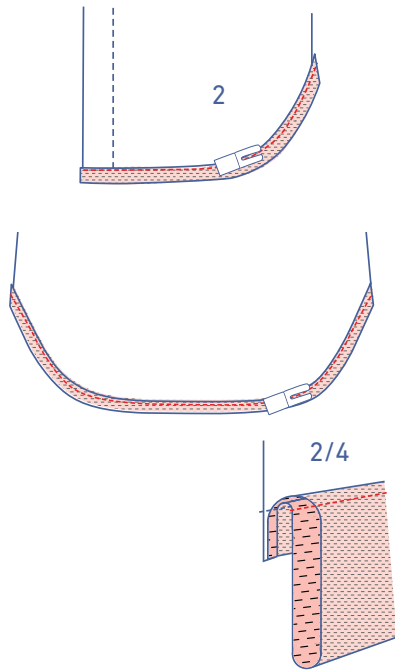


Press the bias tape in half lengthwise with the wrong sides of the fabric facing.

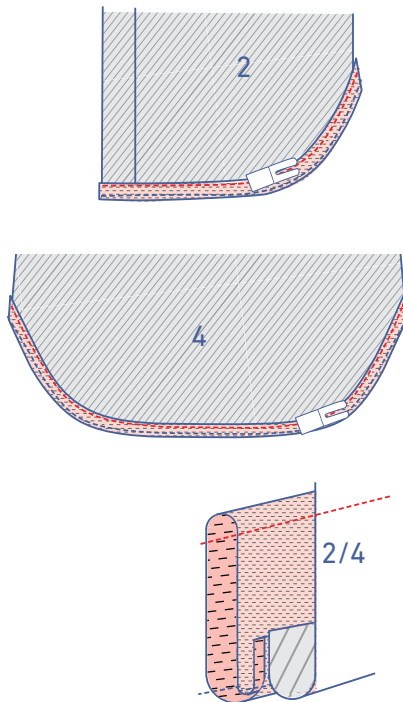


Pin and sew the raw edges of the bias tape to the hem along the right side of the garment.





Then understitch. Fold the bias tape and seam allowance over and stitch the bias tape to the seam allowance underneath.



Fold the bias tape all the way over to the wrong side and edgestitch into place.