

# Elma by Fibre ood

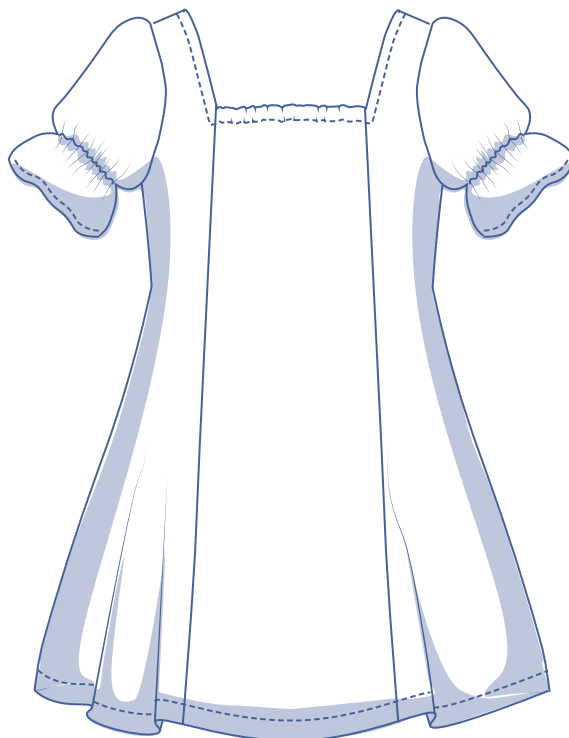


# Elma by Fibre Mood



0 - 26

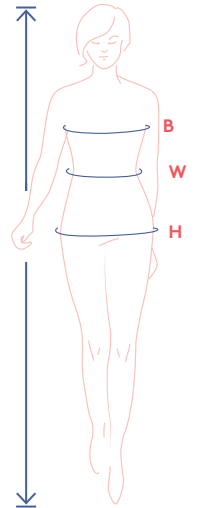
Hey, do you hear The Sound of Music too? 'Sew... a needle pulling thread!' Elma is romantic and retro too... And yet she's still totally on trend – with adorable puffed sleeves, a sweetheart neckline at the front and a U-shaped opening at the back. Elma also has darts down the front and back, a button closure at the front and flares towards the hemline. She looks divine in a longer version and – wonder of wonders – can easily be transformed into a charming top too. Find out how to alter the pattern [here](#).



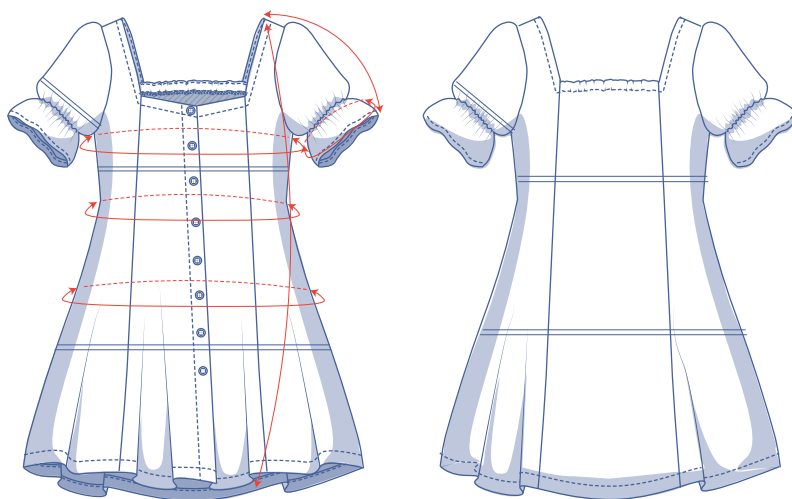
## size chart (in inches)

size	0	2	4	6	8	10	12	14	16	18	20	22	24	26
body height	5'24"	5'38"	5'45"	5'48"	5'51"	5'54"	5'58"	5'61"	5'64"	5'64"	5'64"	5'64"	5'64"	5'64"
B (bust)	29.9	31.5	33.1	34.6	36.2	37.8	39.4	40.9	43.3	45.7	48	50.4	52.8	55.1
W (waist)	26	26.8	27.6	29.1	30.7	32.3	33.1	34.6	37.2	39.8	42.3	44.9	47.4	50
H (hip)	33.9	35.4	37	38.2	39.4	40.6	41.7	42.9	45.3	47.2	49.2	51.2	53.1	55.1

Choose your size based on your bust measurement. If your waist and hip measurements are wider than those in the size chart, check the waist and hip measurements in the chart below to see if there's enough room or whether the pattern needs to be altered. It's easy to do. Simply trace the line of the chosen waist and hip size and blend the lines.



## finished garment measurements (in inches)



— shorten or lengthen the pattern here

These are the pattern measurements based on the used fabric type and serve as a reference. Ease has been added to the width measurements (on top of the exact body measurements) for a more comfortable fit. Elma is designed to have a fitted bust and to be looser at the hips. If needed, make the pattern a size bigger or smaller depending on the desired cut.

Compare the stated lengths to the measured or desired lengths. **Lengthen** or **shorten** the dress and/or the sleeves by cutting the pattern pieces at the indicated double lines. Then either increase the distance between the cut pieces by the desired amount (to lengthen) or overlap the pieces (to shorten). Make sure that the CF and CB lines and the side seams are always straight.

size	0	2	4	6	8	10	12	14	16	18	20	22	24	26
length	35.6	35.8	36	36.1	36.3	36.5	37.4	37.6	39.1	39.3	39.5	39.7	39.9	40.1
sleeve length*	13.2	13.4	13.6	13.8	13.9	14.1	14.3	14.4	15	15.2	15.3	15.5	15.7	15.9
bust	32.8	34.4	36	37.6	39.1	40.7	42.3	43.9	46.2	48.6	51	53.3	55.7	58.1
waistline	30.2	31	31.8	33.4	34.9	36.5	37.3	38.9	41.4	44	46.5	49.1	51.7	54.2
hips	50.2	51.8	53.3	54.5	55.7	56.9	58.1	59.2	61.6	63.6	65.5	67.5	69.5	71.4

\* Including the shoulder length.

### IMPORTANT

The amount of fabric used may change based on the alterations.



## supplies



- Thread
- Iron-on interfacing: max. 1/4 yd
- Buttons (Ø 5/8"): see table
- Shoulder strap retainers: 2 (optional)
- Elastic band (1/6" wide): see table
- Fabric: see table

buttons	0	2	4	6	8	10	12	14	16	18	20	22	24	26
amount	8	8	8	8	8	8	8	8	9	9	9	9	9	9

elastic band		0	2	4	6	8	10	12	14	16	18	20	22	24	26
neckline length (2x)	yd	0.37	0.37	0.37	0.37	0.38	0.38	0.38	0.39	0.40	0.40	0.40	0.41	0.41	0.42
back length	yd	0.20	0.21	0.22	0.23	0.24	0.24	0.25	0.26	0.27	0.29	0.30	0.31	0.33	0.34
sleeve length (2x)	yd	0.29	0.30	0.31	0.31	0.32	0.33	0.34	0.35	0.38	0.39	0.40	0.41	0.42	0.43
total length	yd	1.52	1.55	1.58	1.62	1.65	1.68	1.71	1.75	1.83	1.87	1.9	1.95	1.99	2.04

fabric		0	2	4	6	8	10	12	14	16	18	20	22	24	26
fabric width 43"	yd	2 3/4	3	3	3	3 1/4	3 1/4	3 1/2	3 1/2	3 1/2	3 1/2	4	4	4	4 1/4
fabric width 55"	yd	2 1/2	2 1/2	2 1/2	2 1/2	2 1/2	2 1/2	2 1/2	2 1/2	2 3/4	2 3/4	2 3/4	2 3/4	2 3/4	3 1/4

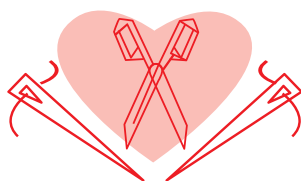
The corresponding fabric layout can be found on page 6 of these sewing instructions.

## fabric advice



For the most flattering fit, Elma works best in fabric with a fluid drape, e.g. viscose Tencel or polyester (crepe) in a solid or a print. That doesn't mean stiffer fabrics like linen, chambray or cotton are out of the question – just make sure they're woven and not knit. Jersey isn't your friend if you want all those pretty details to look nice. And of course, you do!

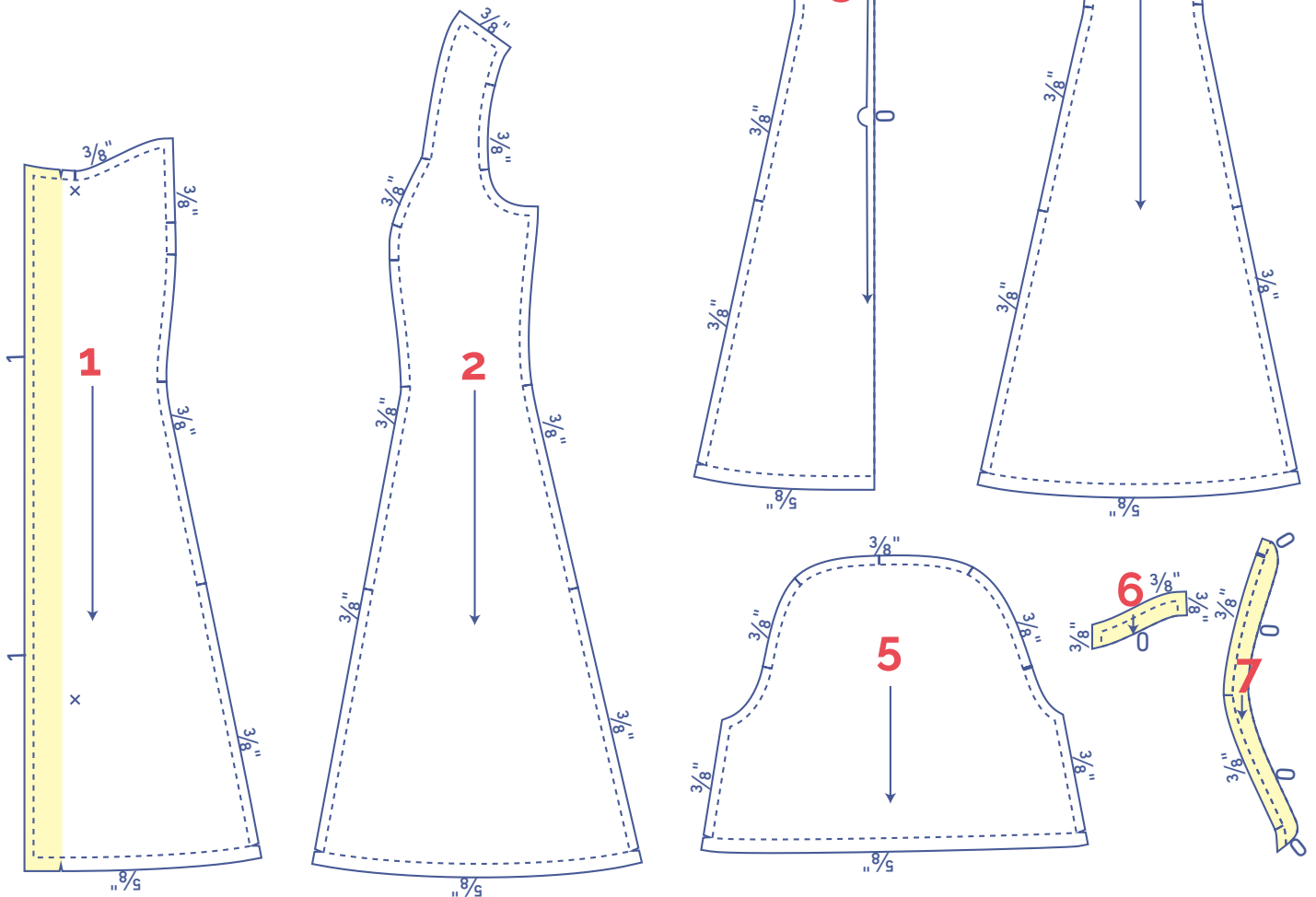
# Proud to be #Sewista



## pattern pieces & seam allowances (in inches)

To sew the garment as described in the instructions, you must draw the illustrated seam allowances around the paper pattern pieces before cutting them out. If you are using a pdf version of the pattern, you may print it with or without seam allowances. If you print with seam allowances, the solid lines denote the cutting lines, and dashed lines denote the stitch lines. Check out the [video](#).

1. centre front: 2x
2. side front: 2x
3. centre piece back: 1x on fabric fold
4. back side: 2x
5. sleeve: 2x
6. facing front: 2x
7. neckline facing: 2x



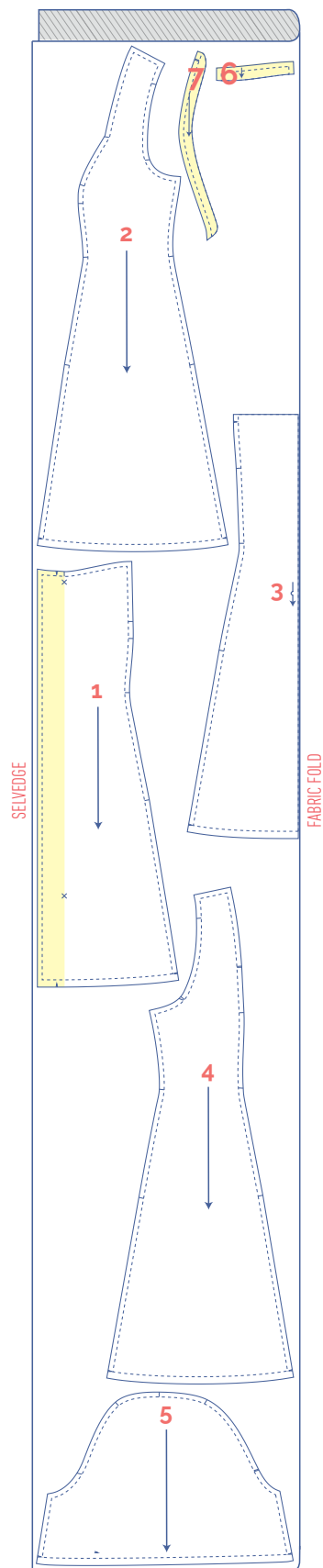
### IMPORTANT

The pieces highlighted in light yellow have iron-on interfacing attached to the wrong side.

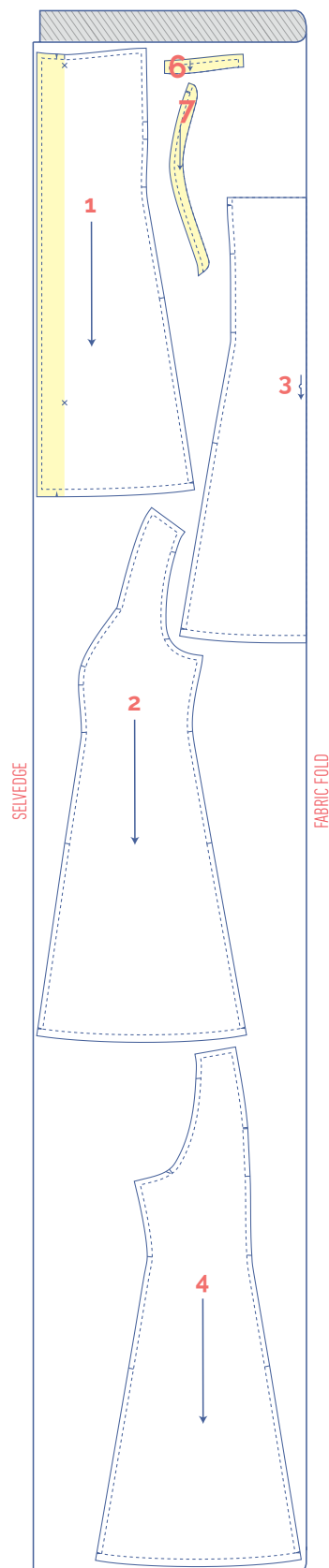
?	material type
	fabric
	iron-on interfacing

**fabric layout – solid fabrics**  
**fabric width 43"**

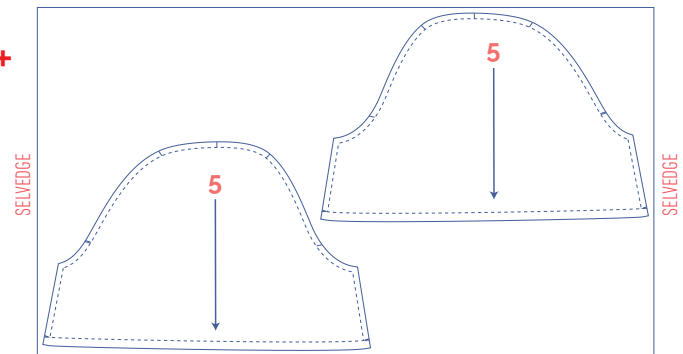
0 - 18



20 - 26



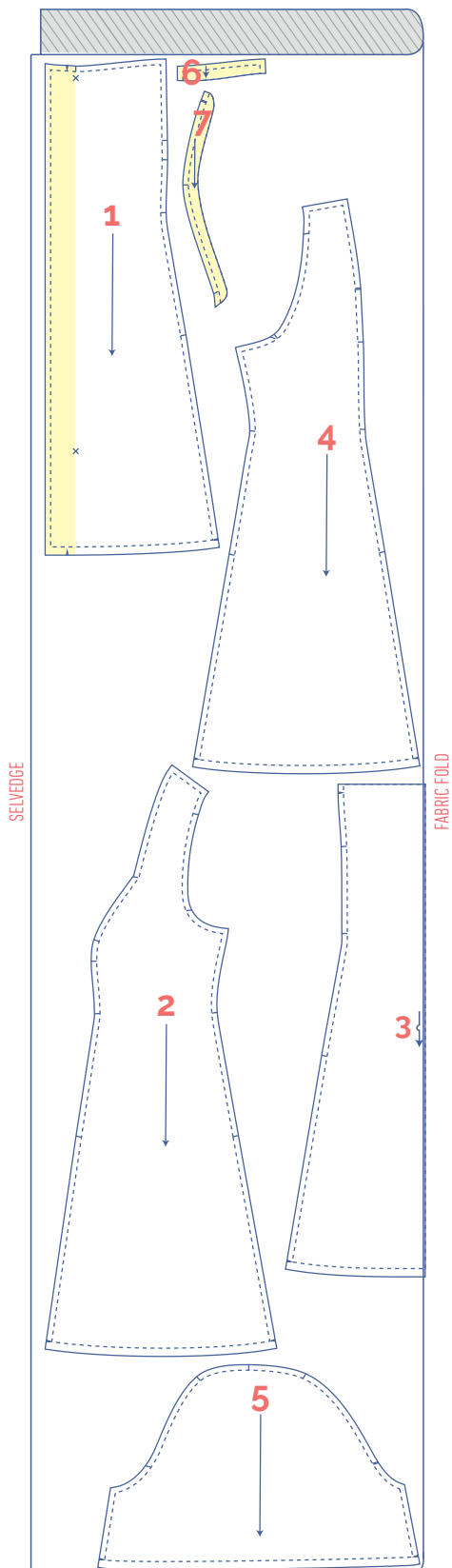
+



## fabric layout – solid fabrics

fabric width 55"

0 - 26



### marking pattern pieces



notch the pattern paper and fabric at the following points



single notch



double notch



V notch



mark the following points using marking thread



snap/button

# sewing instructions



The method used to finish sewing the garment depends on the fabric used. The pieces are always sewn together with the right sides of the fabric facing together, unless stated otherwise.

F front

B back

CF centre front

CB centre back



right side



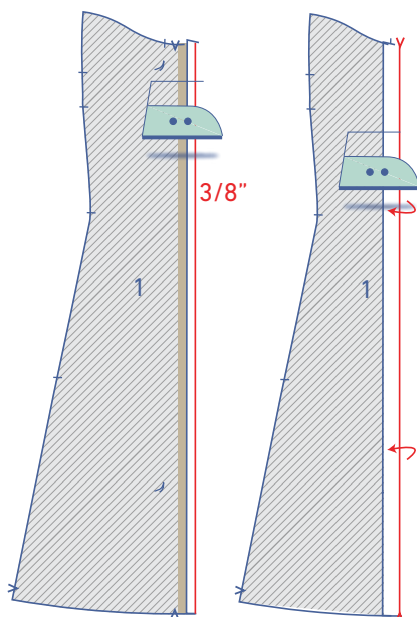
wrong side



iron-on interfacing



elastic band

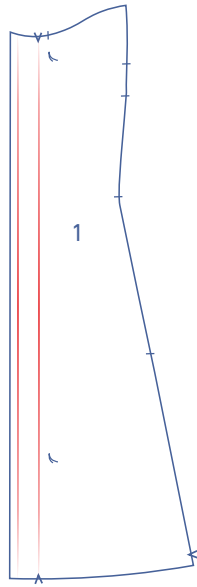


## 1

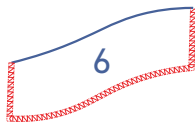
Press the interfaced side of the CF panel (1) as follows:

- Press 3/8" of seam allowance over.
- Press again, this time from the V notch at the top and bottom.



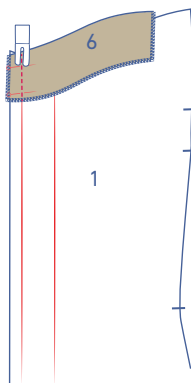


Open back out.

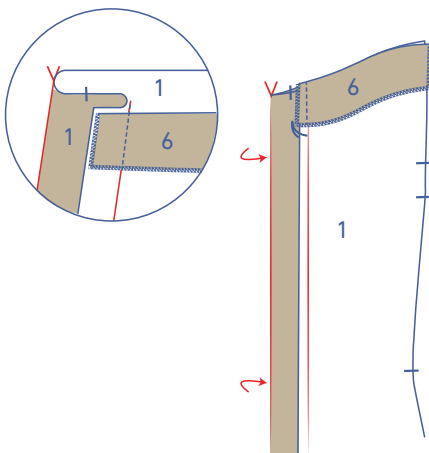


## 2

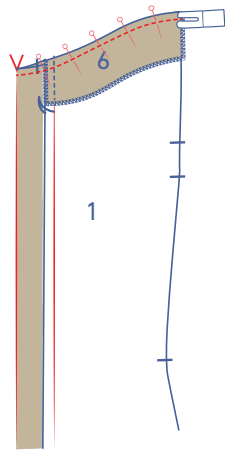
Finish the bottom and sides of the front facing pieces (6) with overlock stitching.



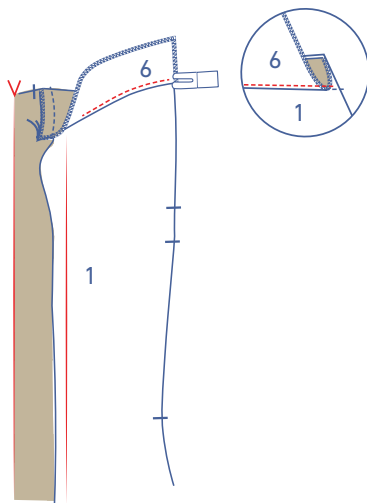
Pin and sew the short vertical end on the CF end to the interfaced side of the CF panel.



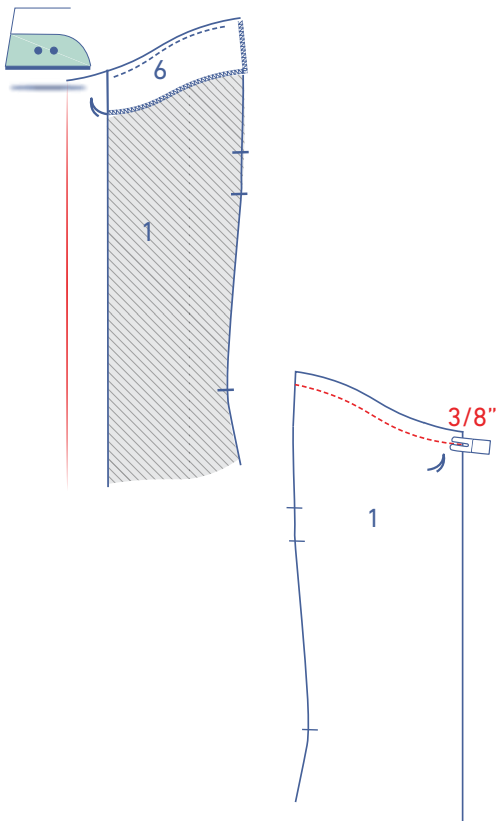
Fold the interfaced section over at the V notches towards the front as shown. Make sure the necklines line up evenly. Press the seam allowance towards the CF.



Sew the necklines together.

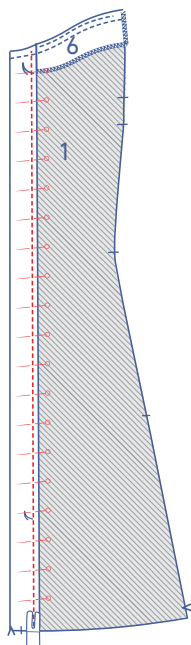


Fold the facing and the seam allowance up and sew the facing into place through all the layers of fabric right next to the seam.

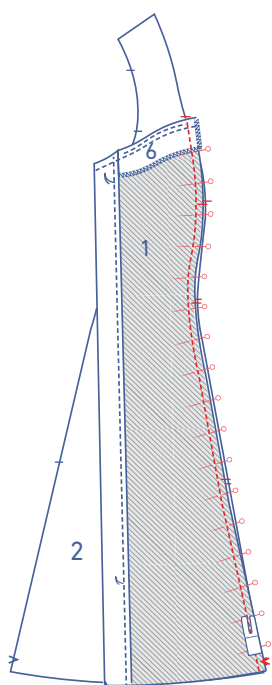


Press the front facing and the interfaced side of the front neatly onto the wrong side.

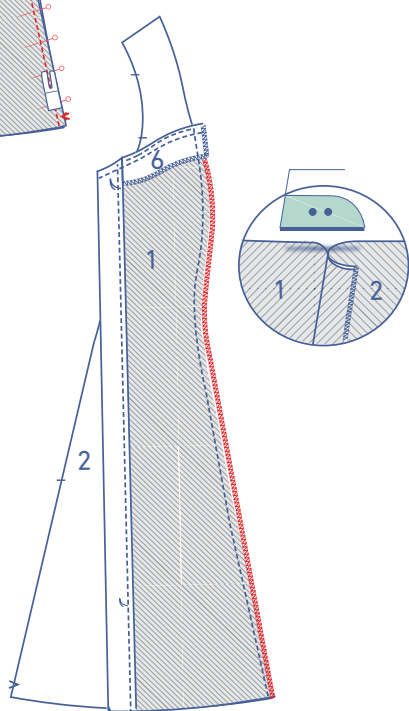
Sew the front facing into place at 3/8" from the top.



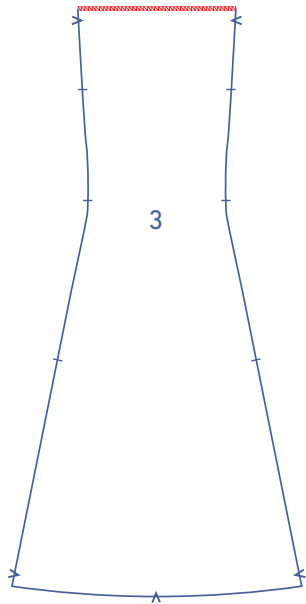
Sew the interfaced side into place.



Pin and sew the CF panel to the front side piece (2), with the notches matching. The finished top of the CF panel should line up evenly with the (indicated) single notch on the front side piece.

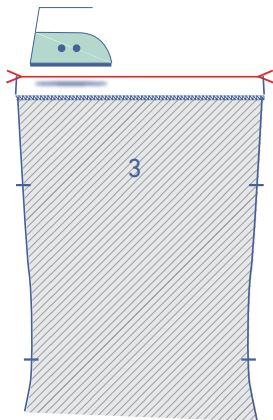


Finish the raw edges together with overlock stitching. Press the seam allowance towards the side seam.

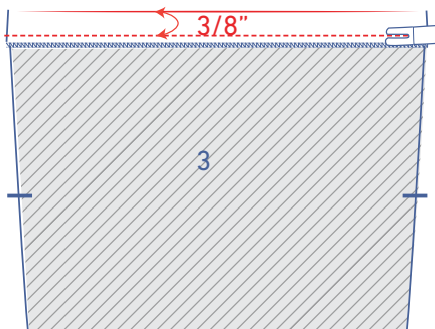


### 3

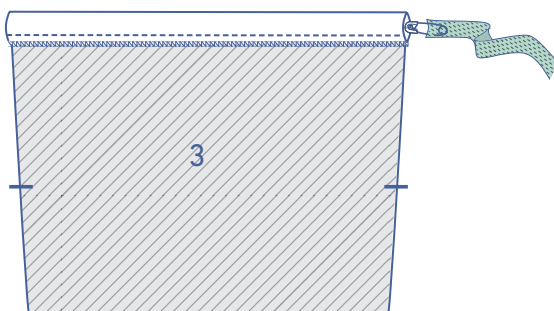
Finish the raw edge of the CB panel (3) with overlock stitching.



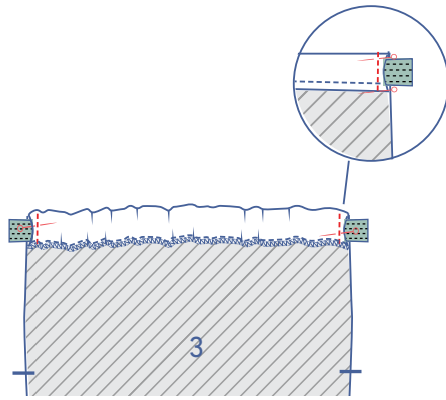
Press the interfaced section over at the V notches.



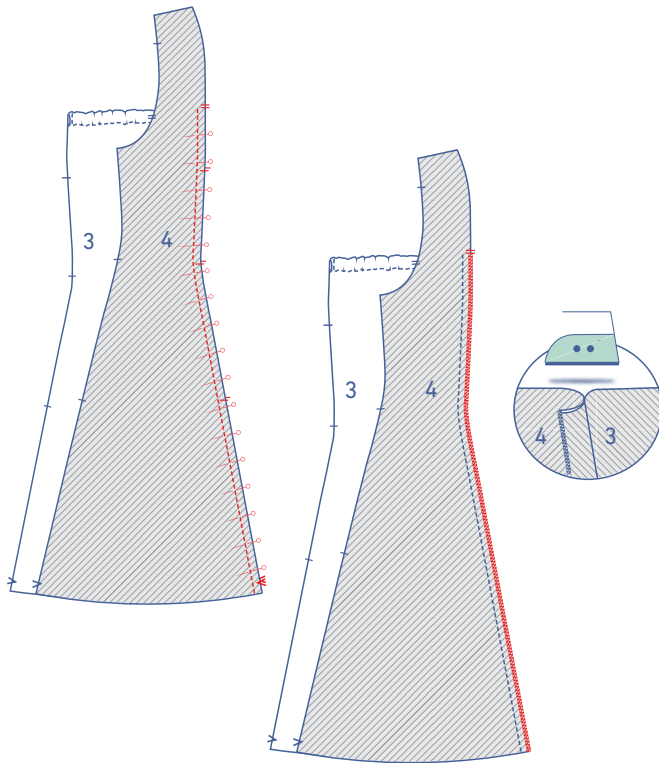
Sew into place at 3/8" from the fold line. This will create the casing for your elastic.



Thread the elastic through the casing.

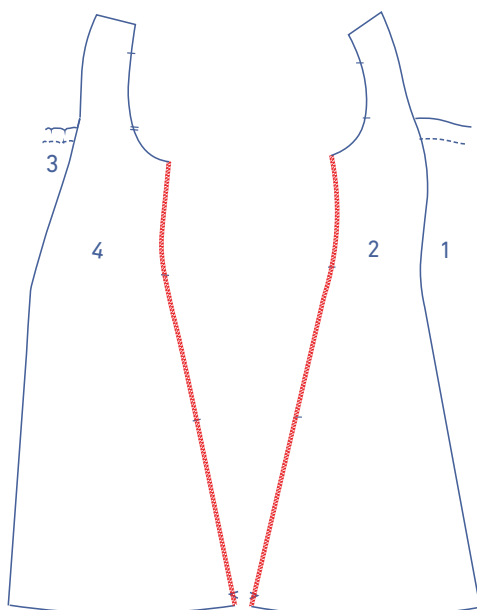


Sew the ends into place at the raw edges of the CB panel.

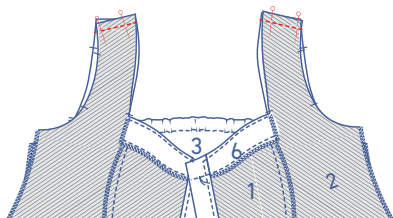


Pin and sew the CB panel to the back side piece (4), with the notches matching. The finished top of the CB panel should line up evenly with the double notch.

Finish the raw edges with overlock stitching and press the seam allowance towards the side seam.

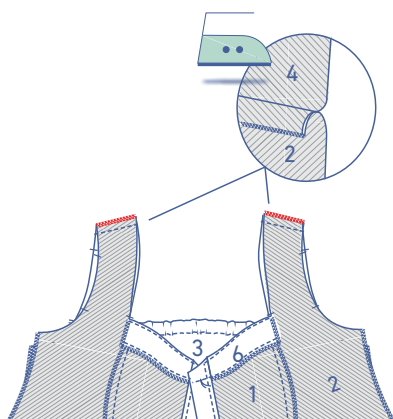


Finish the side seams with overlock stitching.

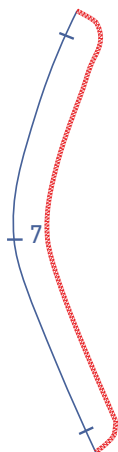


## 4

Pin and sew the shoulder seams.

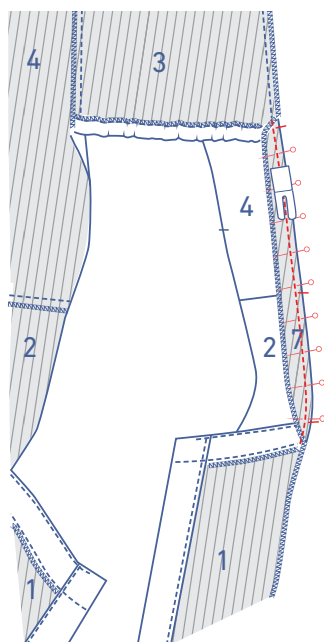


Finish the raw edges together with overlock stitching.  
Press the seam allowance towards the front.

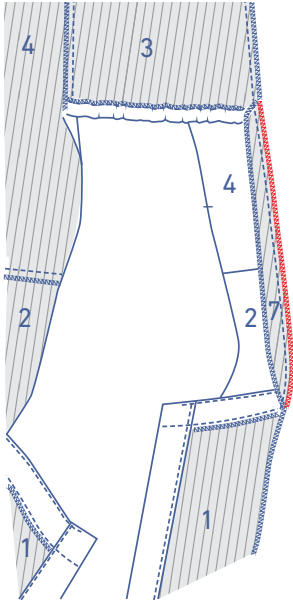


## 5

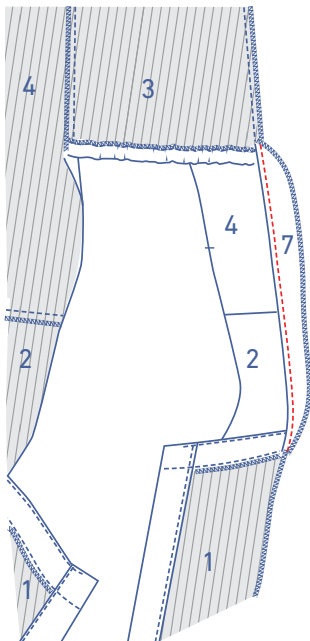
Finish the indicated side (the edge without notches) of the neckline facing (7) with overlock stitching.



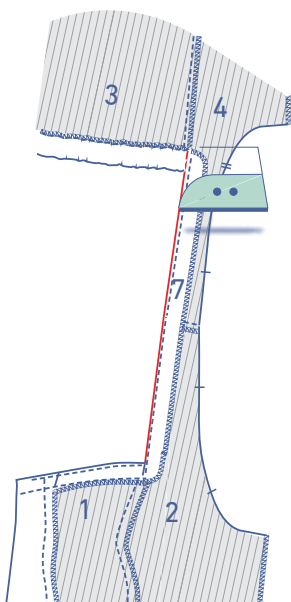
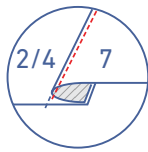
Pin and sew the non-overlocked edge of the facing to the neckline (2+4) with the notches matching.



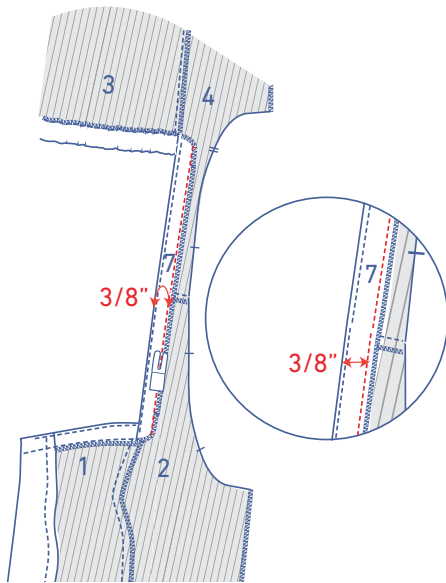
Finish the raw edges together with overlock stitching.



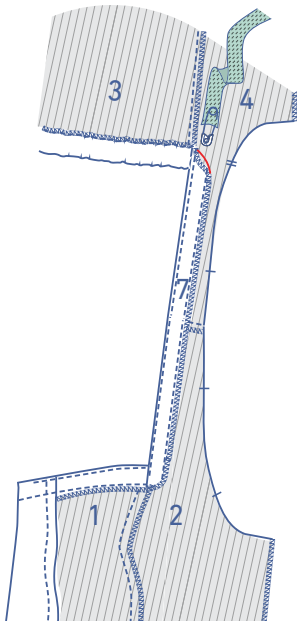
Fold the facing and the seam allowance to the side and sew the facing into place through all layers of fabric right next to the seam.



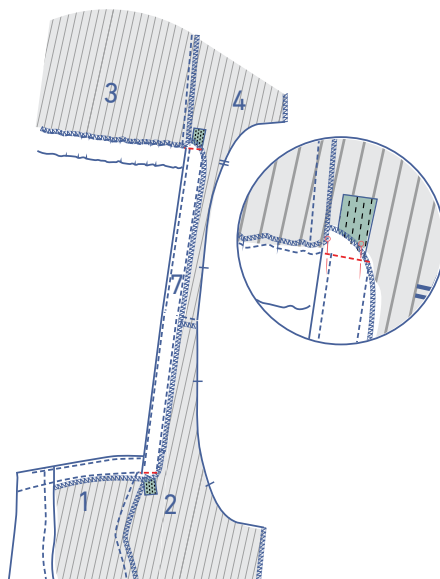
Press the facing neatly onto the wrong side.



Sew the facing into place 3/8" from the neckline. This will create the casing for your elastic. Leave an opening at the bottom to thread the elastic through.

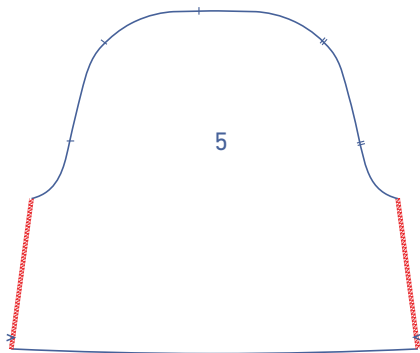


Thread the elastic through the casing.



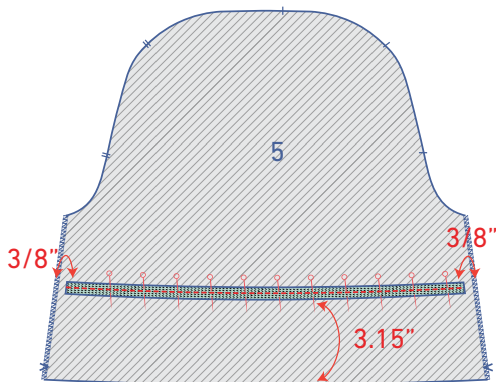
Pin and sew the ends of the elastic into place as shown.



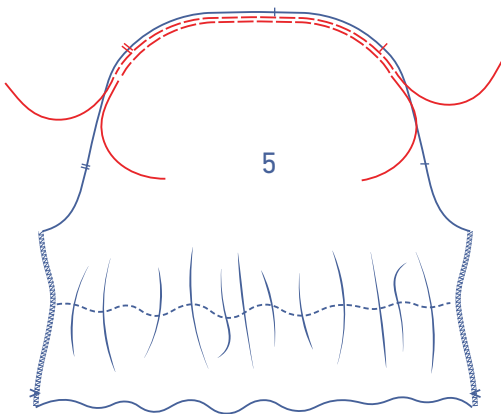


## 6

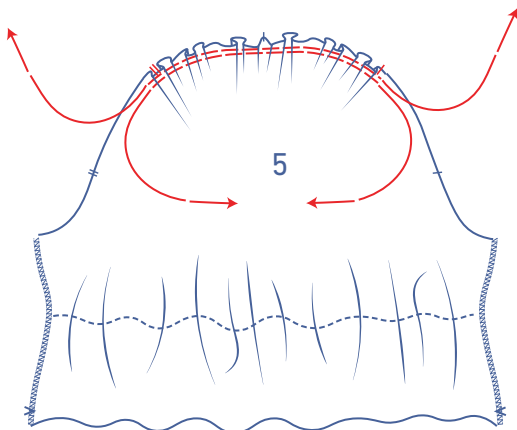
Finish the sides of the sleeve (5) with overlock stitching.



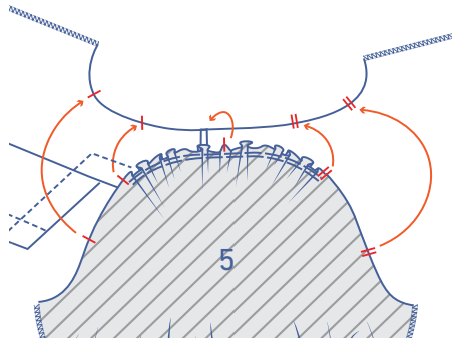
Pin and sew the elastic band to the wrong side of the sleeve at 3.15" from the bottom. Start and stop at 3/8" from the edges (you will need to stretch out the elastic as you sew).



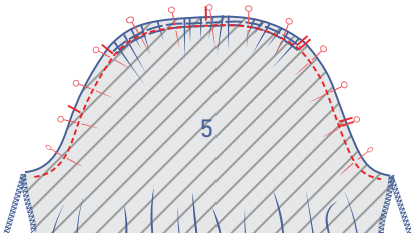
Sew 2 parallel rows of stitching along the top of the sleeve, using a long stitch length at a low thread tension. Sew just past the notches on either side. Leave a length of thread at the start and end of the rows.



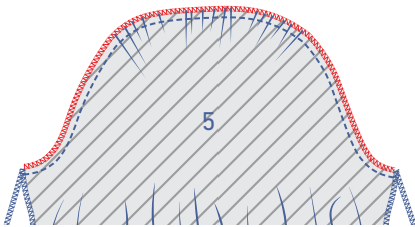
Carefully tug the ends of the threads to gather the fabric into ruffles.



Pin the sleeve cap to the armhole, making sure the notches match. The single notch marks the front, while the double notch marks the back. The top single notch should line up evenly with the shoulder seam. Distribute the ruffles evenly between notches.

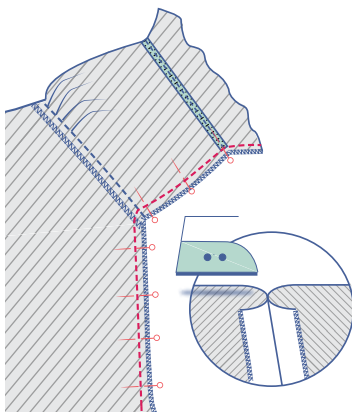


Sew into place.

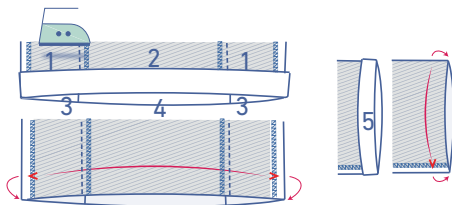


Finish the raw edges together with overlock stitching.

## 7

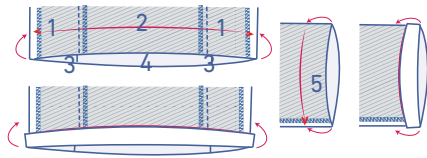


Pin and sew the side and underarm seams. Press the seam allowance open.

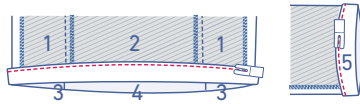


## 8

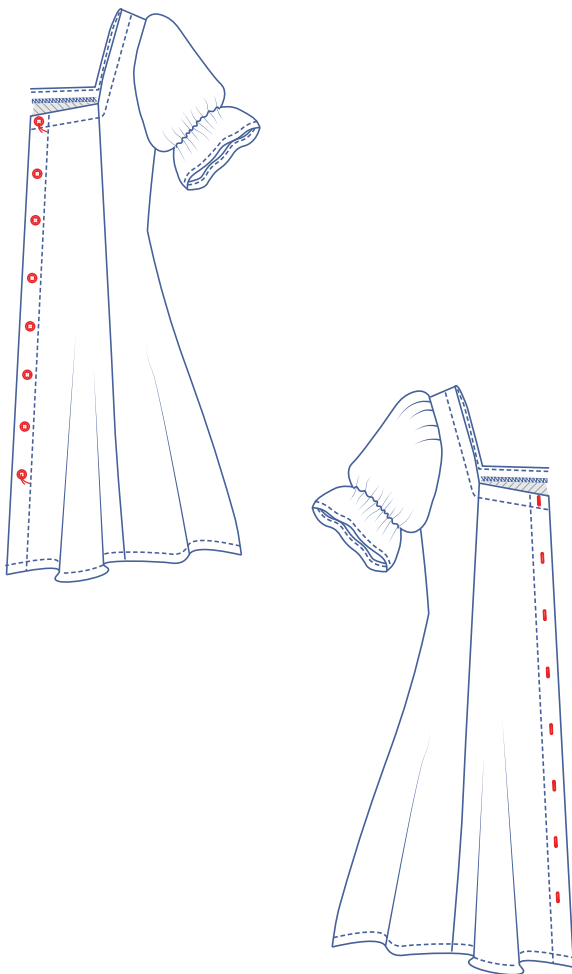
Press the seam allowance of the dress and the sleeve up and open back out.



Fold the raw edge to the pressed fold line and then fold up again.



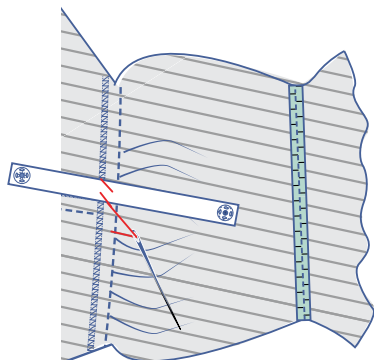
Sew into place right next to the edge.



## 9

Sew the buttons on where indicated. The top and bottom button have been marked on the pattern. Divide the distance equally to determine the position of the other buttons.

Make vertical buttonholes based on the position of the buttons.



If you'd like to sew shoulder strap retainers, sew them on by hand here as shown.