

Ulla by Fibre ⚡ood

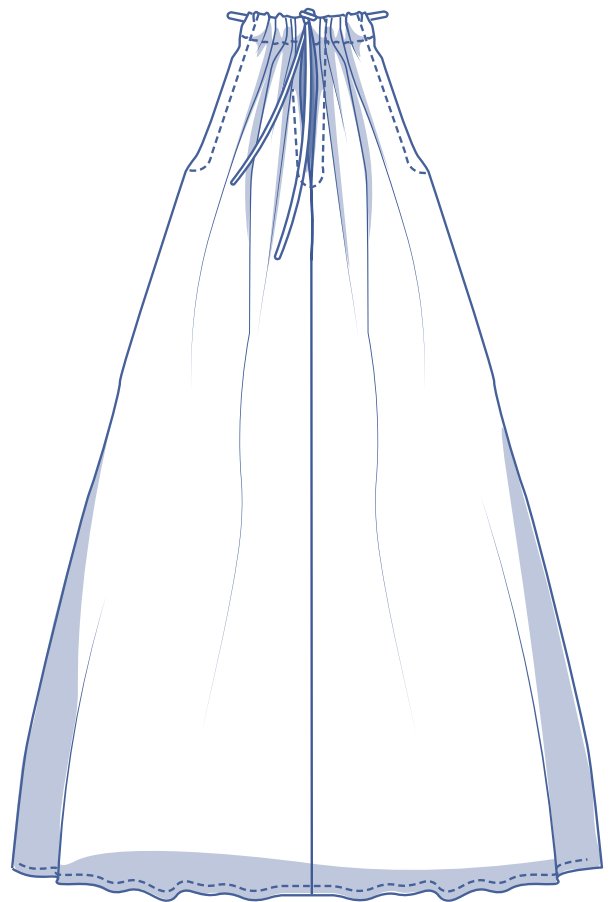
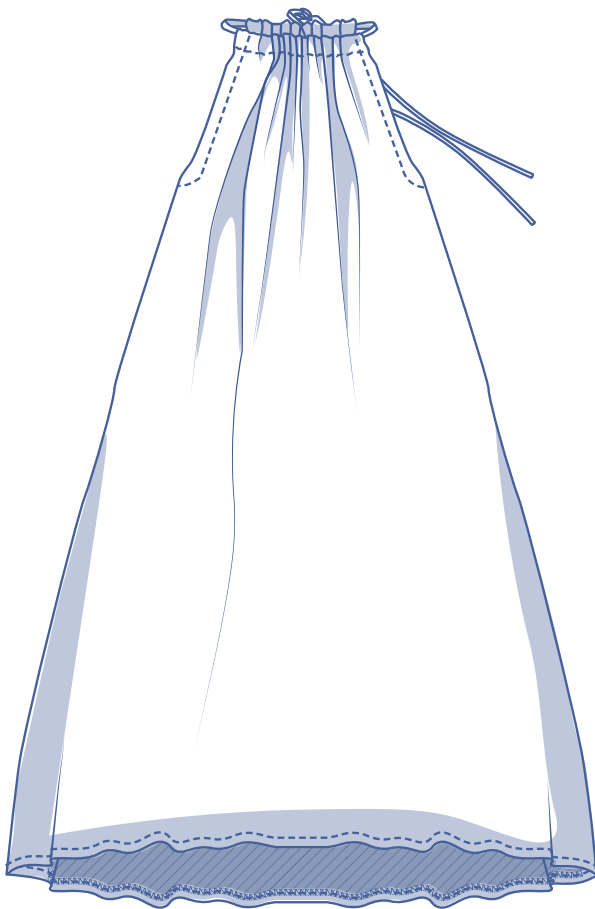


Ulla by Fibre Mood



0 - 26

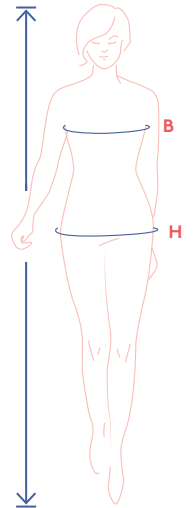
Show them you're a goddess. Ulla's simplicity will turn every head in the room. This fluid calf-length halter dress has a slightly fitted bust and gently flows at the bottom. The necklines of the front and back feature gorgeous draping. A lovely wave effect is created by threading a cloth tie or cord through the neckline's casing. Add your own personal touch, perhaps a cord in a contrasting colour, a lovely bow with long trailing ribbons, a delicate string of pearls? This understated dress isn't hard to make, and it's always stunning whatever length you choose.



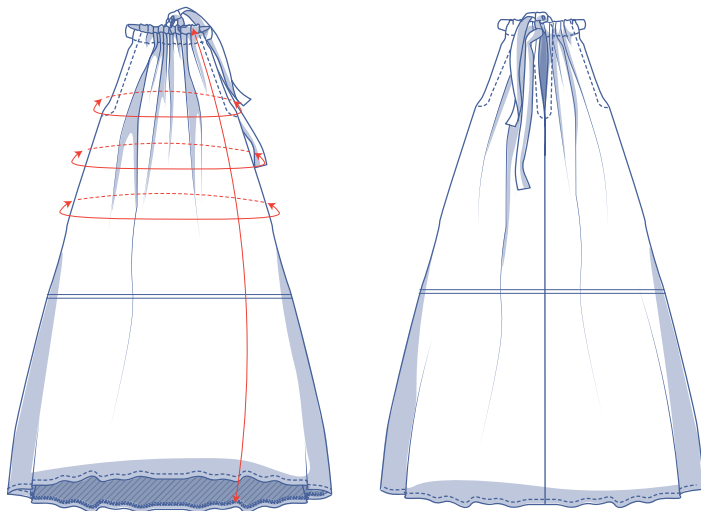
size chart (in inches)

| size | 0 | 2 | 4 | 6 | 8 | 10 | 12 | 14 | 16 | 18 | 20 | 22 | 24 | 26 |
|-------------|-------|-------|-------|-------|-------|-------|-------|-------|-------|-------|-------|-------|-------|-------|
| body height | 5'24" | 5'38" | 5'45" | 5'48" | 5'51" | 5'54" | 5'58" | 5'61" | 5'64" | 5'64" | 5'64" | 5'64" | 5'64" | 5'64" |
| B (bust) | 29.9 | 31.5 | 33.1 | 34.6 | 36.2 | 37.8 | 39.4 | 40.9 | 43.3 | 45.7 | 48 | 50.4 | 52.8 | 55.1 |
| H (hip) | 33.9 | 35.4 | 37 | 38.2 | 39.4 | 40.6 | 41.7 | 42.9 | 45.3 | 47.2 | 49.2 | 51.2 | 53.1 | 55.1 |

Choose your size based on your bust measurement. If your hip measurements are wider than those in the size chart, check the hip measurements in the chart below to see if there's enough room or whether the pattern needs to be altered. It's easy to do. Simply trace the line of the hip size you want, then blend it with the line at the bust.



finished garment measurements (in inches)



— shorten or lengthen the pattern here

These are the pattern measurements based on the used fabric type and serve as a reference. Ease has been added to the width measurements (on top of the exact body measurements) for a more comfortable fit. Ulla is designed to have a slightly more fitted bust and drape loosely towards the bottom. If needed, make the pattern a size bigger or smaller depending on the desired fit.

Compare the stated lengths to the measured or desired lengths. **Lengthen** or **shorten** the dress by cutting the pattern pieces along the indicated double lines. Then either increase the distance between the cut pieces by the desired amount (to lengthen) or overlap the pieces (to shorten). Make sure that the CF and CB lines and the side seams are always straight.

| size | 0 | 2 | 4 | 6 | 8 | 10 | 12 | 14 | 16 | 18 | 20 | 22 | 24 | 26 |
|-----------|------|------|------|------|------|------|------|------|------|------|------|------|------|------|
| length | 43.3 | 43.6 | 43.9 | 44.1 | 44.4 | 44.6 | 44.9 | 45.2 | 46.1 | 46.5 | 47 | 47.4 | 47.8 | 48.3 |
| bust | 32.8 | 34.4 | 36 | 37.6 | 39.1 | 40.7 | 42.3 | 43.9 | 46.2 | 48.6 | 50.9 | 53.3 | 55.7 | 58 |
| waistline | 36.3 | 37.9 | 39.5 | 41 | 42.6 | 44.2 | 45.8 | 47.3 | 49.7 | 52.1 | 54.4 | 56.8 | 59.1 | 61.5 |
| hips | 46.7 | 48.3 | 49.9 | 51.4 | 53 | 54.6 | 56.2 | 57.7 | 60.1 | 62.5 | 64.8 | 67.2 | 69.6 | 71.9 |

IMPORTANT

The amount of fabric used may change based on the alterations.



supplies



- Thread
- Cord/cloth tie: see table (this is optional, since you can also use self fabric for the tie. A pattern piece has been included for this)
- Fabric: see table

| cord/cloth tie | | 0 | 2 | 4 | 6 | 8 | 10 | 12 | 14 | 16 | 18 | 20 | 22 | 24 | 26 |
|----------------|----|------|------|------|------|------|------|------|------|------|------|------|------|------|------|
| length | yd | 1.82 | 1.83 | 1.85 | 1.86 | 1.87 | 1.88 | 1.90 | 1.91 | 1.93 | 1.95 | 1.97 | 1.99 | 2.01 | 2.03 |

| fabric | | 0 | 2 | 4 | 6 | 8 | 10 | 12 | 14 | 16 | 18 | 20 | 22 | 24 | 26 |
|------------------|----|-----|-----|-----|-----|-----|-----|-----|-----|-----|-----|-----|-----|-----|-----|
| fabric width 43" | yd | 3 | 3 ¼ | 3 ¼ | 3 ¼ | 3 ¼ | 3 ½ | 3 ½ | 3 ½ | 3 ¾ | 4 | 4 | 4 ¼ | 4 ¼ | 4 ½ |
| fabric width 55" | yd | 2 ¾ | 2 ¾ | 2 ¾ | 2 ¾ | 2 ¾ | 2 ¾ | 2 ¾ | 3 | 3 ½ | 3 ½ | 3 ¾ | 3 ¾ | 3 ¾ | 3 ¾ |

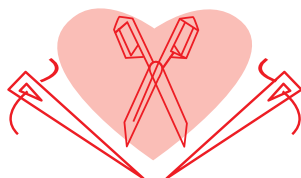
The corresponding fabric layout can be found on page 6 of these sewing instructions.

fabric advice



Ulla can be made in a woven or a knit fabric, but whatever you choose must have a fluid drape. Stiff fabrics (e.g. thick denim) with no drape will not give you that lovely undulating effect.

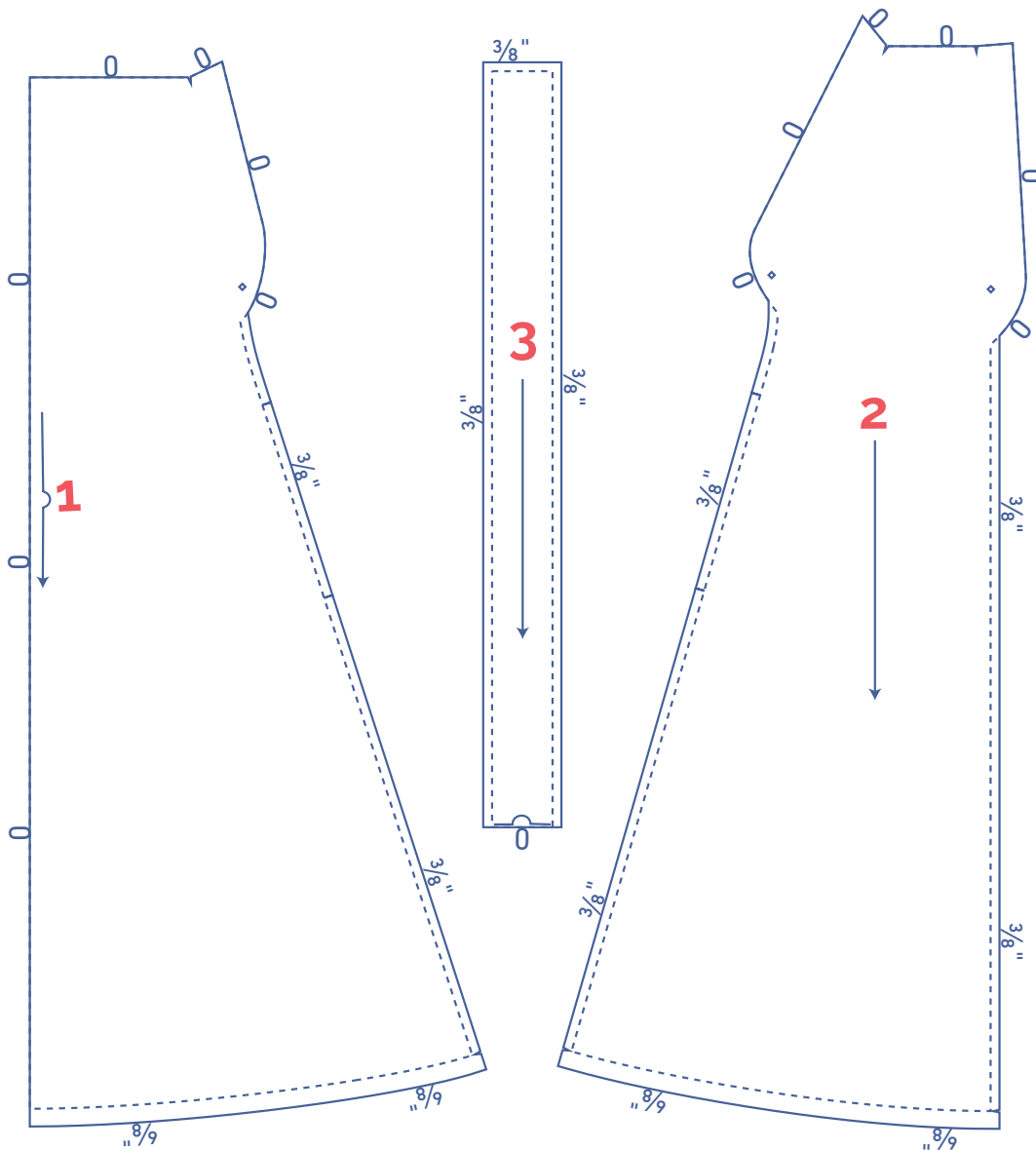
Proud to be #Sewista





pattern pieces & seam allowances (in inches)

To sew the garment as described in the instructions, you must draw the illustrated seam allowances around the paper pattern pieces before cutting them out. If you are using a pdf version of the pattern, you may print it with or without seam allowances. If you print with seam allowances, the solid lines denote the cutting lines, and dashed lines denote the stitch lines. Check out the [video](#).

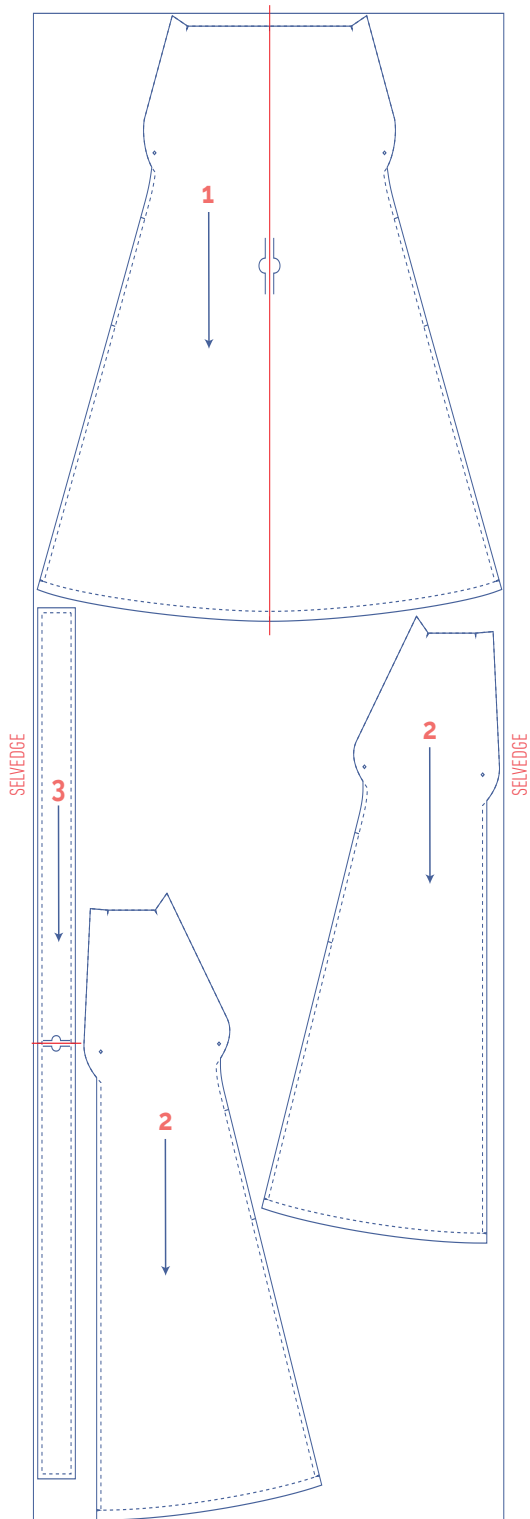
1. front: 1x on the fabric fold
2. back: 2x
3. ribbon: 1x on fabric fold



| | |
|---------------------------------------------------------------------------------------|---------------|
|  | material type |
|  | fabric |

fabric layout – solid fabrics
fabric width 43"

0 - 12

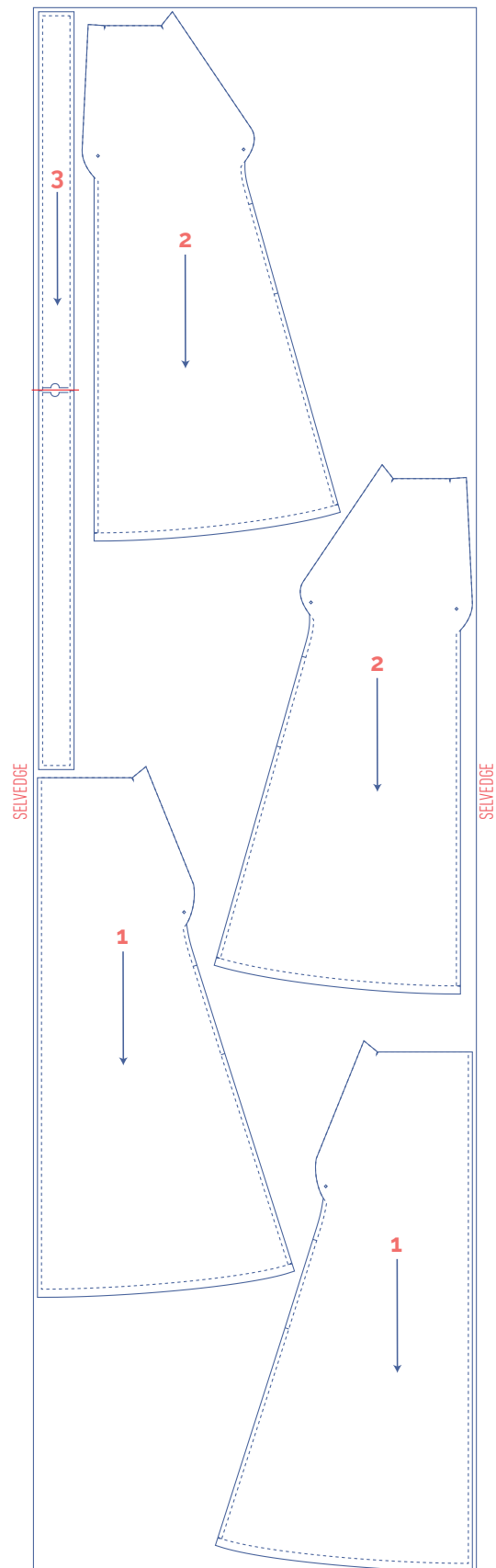


IMPORTANT

You only need pattern piece 3 once.

14 - 26

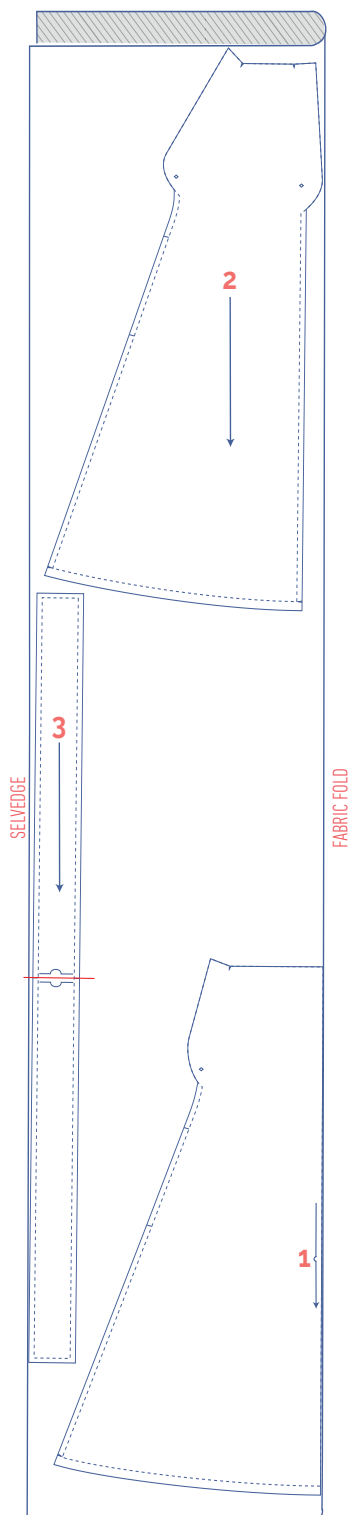
Cut the pattern piece 1 in 2 at CF and add seam allowance.



fabric layout – solid fabrics

fabric width 55"

0 - 26



IMPORTANT

You only need pattern piece 3 once.

marking pattern pieces



notch the pattern paper and fabric at the following points



single notch



V notch



mark the following points using marking thread



centre point

sewing instructions



The method used to finish sewing the garment depends on the fabric used. The pieces are always sewn together with the right sides of the fabric facing together, unless stated otherwise.

F front

B back

CF centre front

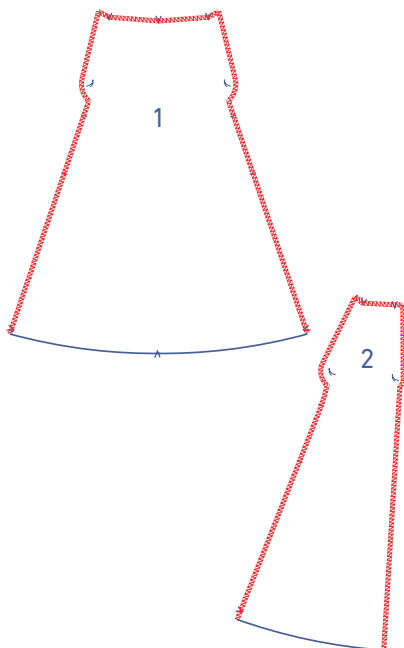
CB centre back



right side

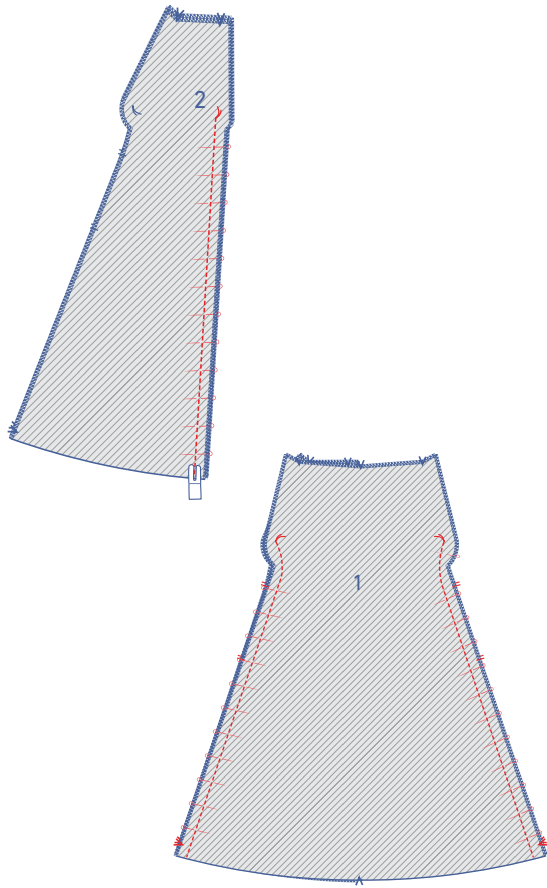


wrong side



1

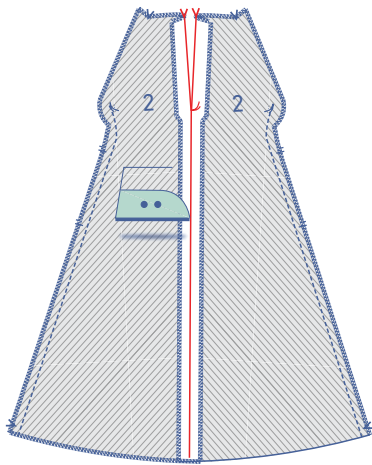
Finish all sides of the front and back pieces with overlock stitching, except for the hems.



2

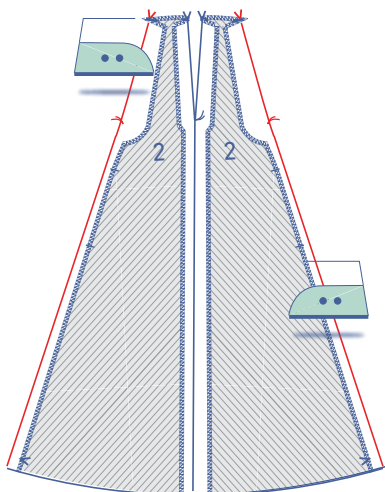
Pin and sew the CB seam up to the marking thread.

Place the front piece (1) on top of the back piece (2) right sides together and sew the side seams up to the marking threads.

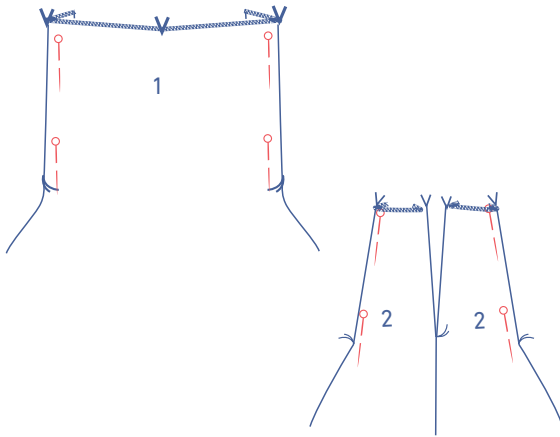


3

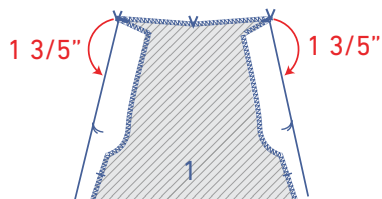
Press the vertical facing pieces over at the V notch at the top and towards the marking thread. Press the CB seam open.



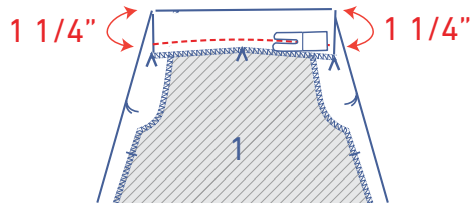
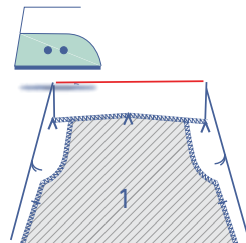
Press the side seams open as well.



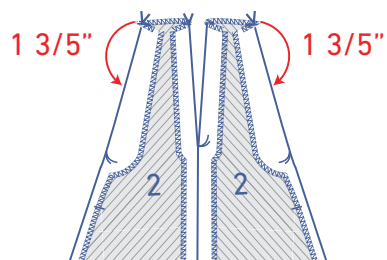
Pin the facing pieces temporarily into place.



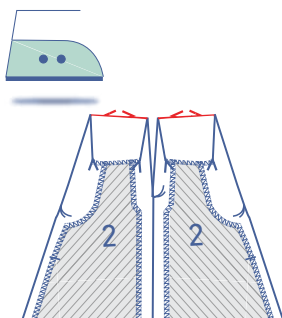
Now, fold down the top of the front piece by $1 \frac{3}{5}$ " and press.

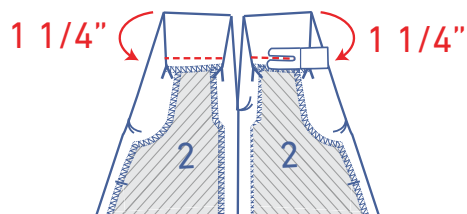


Sew into place at $1 \frac{1}{4}$ " from the folded edge.

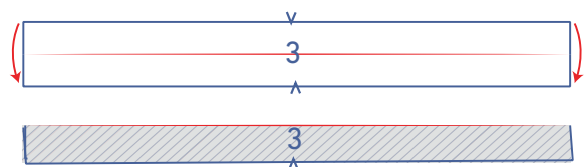


Now, fold down the top of the back pieces on both sides of the CB by $1 \frac{3}{5}$ " and press.





Sew into place at 1 1/4" from the folded edge.

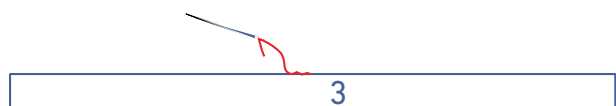


4

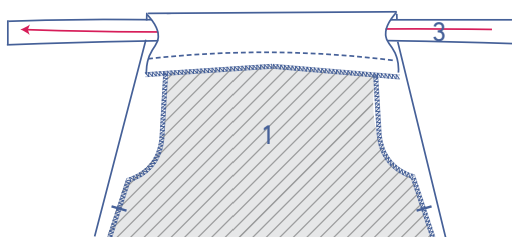
Now, fold the cloth tie (3) in half lengthwise with the right sides touching.



Sew the indicated edges but leave an opening in the centre of the long end to turn the cloth tie back the right way out again.

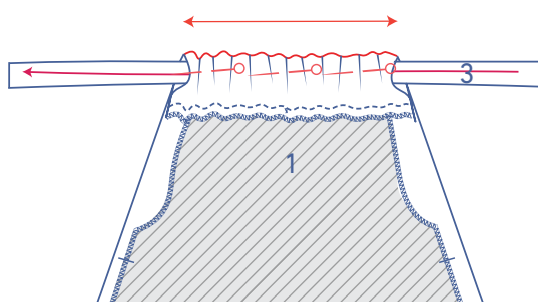


Turn the right way out and sew the opening closed.



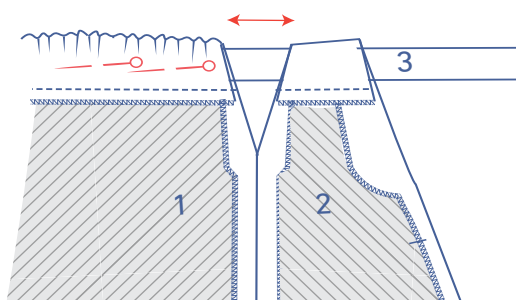
Thread the cloth tie through the casing of the front.

6.9/7.1/7.3/7.5/7.7/7.9/8.1/8.3/8.5/8.9/9.1/9.3/9.3/9.5"



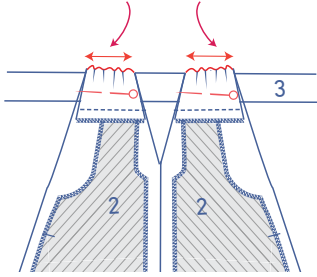
Gather the top of the front with your fingers to reduce the width until it is 6.9/7.1/7.3/7.5/7.7/7.9/8.1/8.3/8.5/8.9/9.1/9.3/9.3/9.5" wide. Pin temporarily into place.

2.6/2.6/2.8/2.8/2.8/3/3/3.2/3.2/3.4/3.4/3.6/3.8/3.8"

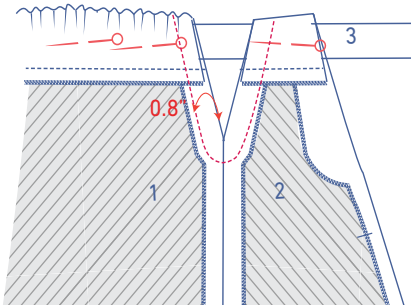


Thread the cloth tie through the casing of the back pieces. Leave a piece of cloth tie 2.6/2.6/2.8/2.8/2.8/3/3/3.2/3.2/3.4/3.4/3.6/3.8/3.8" long between the front and back pieces as shown.

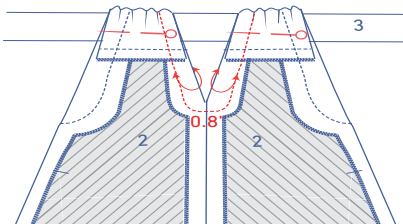
2.6/2.6/2.8/2.8/2.8/3/3/3.2/3.2/3.4/3.4/3.6/3.8/3.8"



Gather the top of each back piece with your fingers to reduce the width until they are each 2.6/2.6/2.8/2.8/2.8/3/3/3.2/3.2/3.4/3.4/3.6/3.8/3.8" wide, respectively. Pin temporarily into place.



Sew the facing parts of the armholes of the front and back at 0.8" from the folded edge as shown in the diagram.

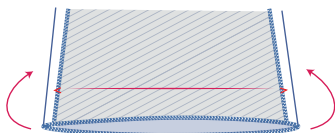


Repeat for the CB, stitching 0.8" away from the folded edge.



5

Finish the bottom of the hem with overlock stitching.



Press the hem allowance up and sew into place with your sewing machine or by hand.

