

Lola by Fibre Mood



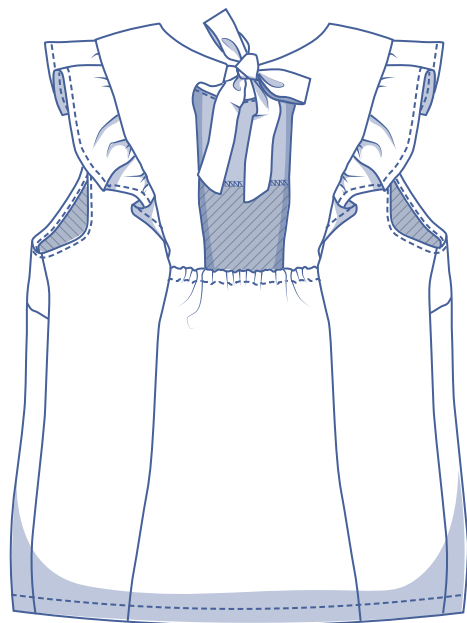
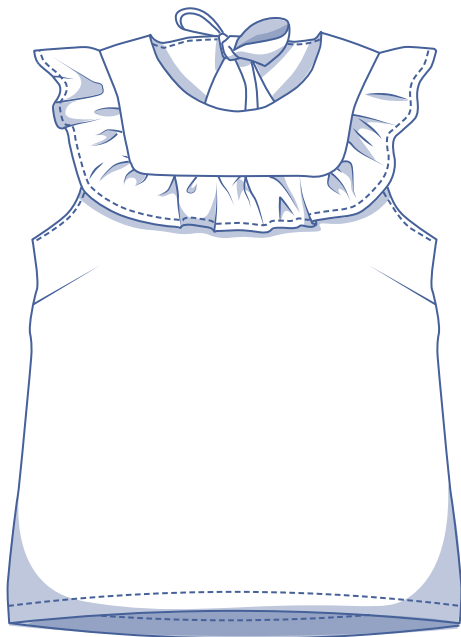
Lola by Fibre ood

***✱✱



0 - 26

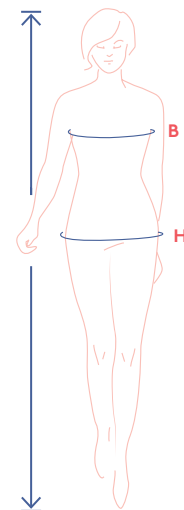
Are you a romantic soul easily tempted by retro vibes? If so, you and Lola are – without a doubt – long-lost kindred spirits. But if you want to be reunited, you'll need to be up to the challenge. This project isn't for the faint of heart... Your efforts are sure to be rewarded though with an incredibly stylish top that looks utterly charming when paired with trousers, skirts and culottes. Lola features a high, round neckline, ruffles (feel free to double the amount!), a unique open back (with elastic for a comfy, but attractive fit) and a cute tie-back. There's only one word for it – wow!



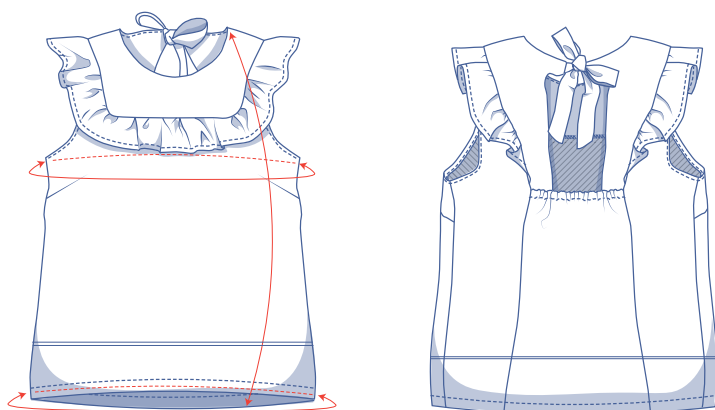
size chart (in inches)

size	0	2	4	6	8	10	12	14	16	18	20	22	24	26
body height	5'24"	5'38"	5'45"	5'48"	5'51"	5'54"	5'58"	5'61"	5'64"	5'64"	5'64"	5'64"	5'64"	5'64"
B (bust)	29.9	31.5	33.1	34.6	36.2	37.8	39.4	40.9	43.3	45.7	48	50.4	52.8	55.1
H (hips)	33.9	35.4	37	38.2	39.4	40.6	41.7	42.9	45.3	47.2	49.2	51.2	53.1	55.1

Choose your size based on your bust measurement. If your hip measurements are wider than those in the size chart, check the hem circumference in the chart below to see if there's enough room or whether the pattern needs to be altered. It's easy to do. Simply trace the line of the chosen hip size and blend it with the line at the bust point.



pattern measurements (in inches)



These are the pattern measurements based on the used fabric type and serve as a reference. Ease has been added to the width measurements (on top of the exact body measurements) for a more comfortable fit. Lola is designed to have a looser cut. If needed, make the pattern a size bigger or smaller depending on the desired cut.

— shorten or lengthen the pattern here

size	0	2	4	6	8	10	12	14	16	18	20	22	24	26
length	23.8	23.9	24	24.1	24.2	24.3	24.4	24.5	24.7	24.9	25.1	25.2	25.4	25.6
bust	33.7	35.2	36.7	38.2	39.6	41.1	42.6	44	46.7	48.9	51.1	53.2	55.3	57.4
hem circumference	35.9	37.5	39.1	40.3	41.5	42.6	43.8	45	47	48.9	50.9	52.9	54.8	56.8

Compare the stated lengths to the measured or desired lengths. **Lengthen** or **shorten** the top by cutting the pattern pieces at the indicated double lines. Then either increase the distance between the cut pieces by the desired amount (to lengthen) or overlap the pieces (to shorten). Make sure that the CF and CB lines and the side seams are always straight.



IMPORTANT

The amount of fabric used may change based on the alterations.

supplies



- Thread
- Elastic band (1/6" wide): see table
- Fabric: see table

elastic band		0	2	4	6	8	10	12	14	16	18	20	22	24	26
length	yd	0.16	0.17	0.17	0.18	0.19	0.20	0.20	0.21	0.22	0.23	0.24	0.25	0.26	0.27

fabric		0	2	4	6	8	10	12	14	16	18	20	22	24	26
fabric width 43" / standard fabric layout	yd	1 1/2	1 1/2	1 1/2	1 3/4	1 3/4	2 1/2	2 1/2	2 1/2	2 3/4	2 3/4	2 3/4	2 3/4	2 3/4	3
fabric width 43" / alternative fabric layout*	yd	1 1/2	1 1/2	1 1/2	1 3/4	1 3/4	/	/	/	/	/	/	/	/	/
fabric width 55" / standard fabric layout	yd	1 1/2	1 1/2	1 1/2	1 1/2	1 1/2	1 1/2	1 1/2	1 3/4	1 3/4	1 3/4	1 3/4	1 3/4	1 3/4	1 3/4
fabric width 55" / alternative fabric layout*	yd	1 1/2	1 1/2	1 1/2	1 1/2	1 1/2	1 1/2	1 1/2	1 3/4	1 3/4	1 3/4	1 3/4	1 3/4	1 3/4	1 3/4

* We have given alternative layouts to reduce fabric consumption (this requires you to cut the fabric unfolded). However for sizes 10-26, there is no fabric saving so therefore we recommend you follow the standard layout.

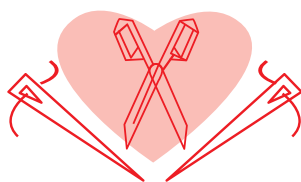
The corresponding fabric layouts can be found starting on page 6 of these sewing instructions.

fabric advice



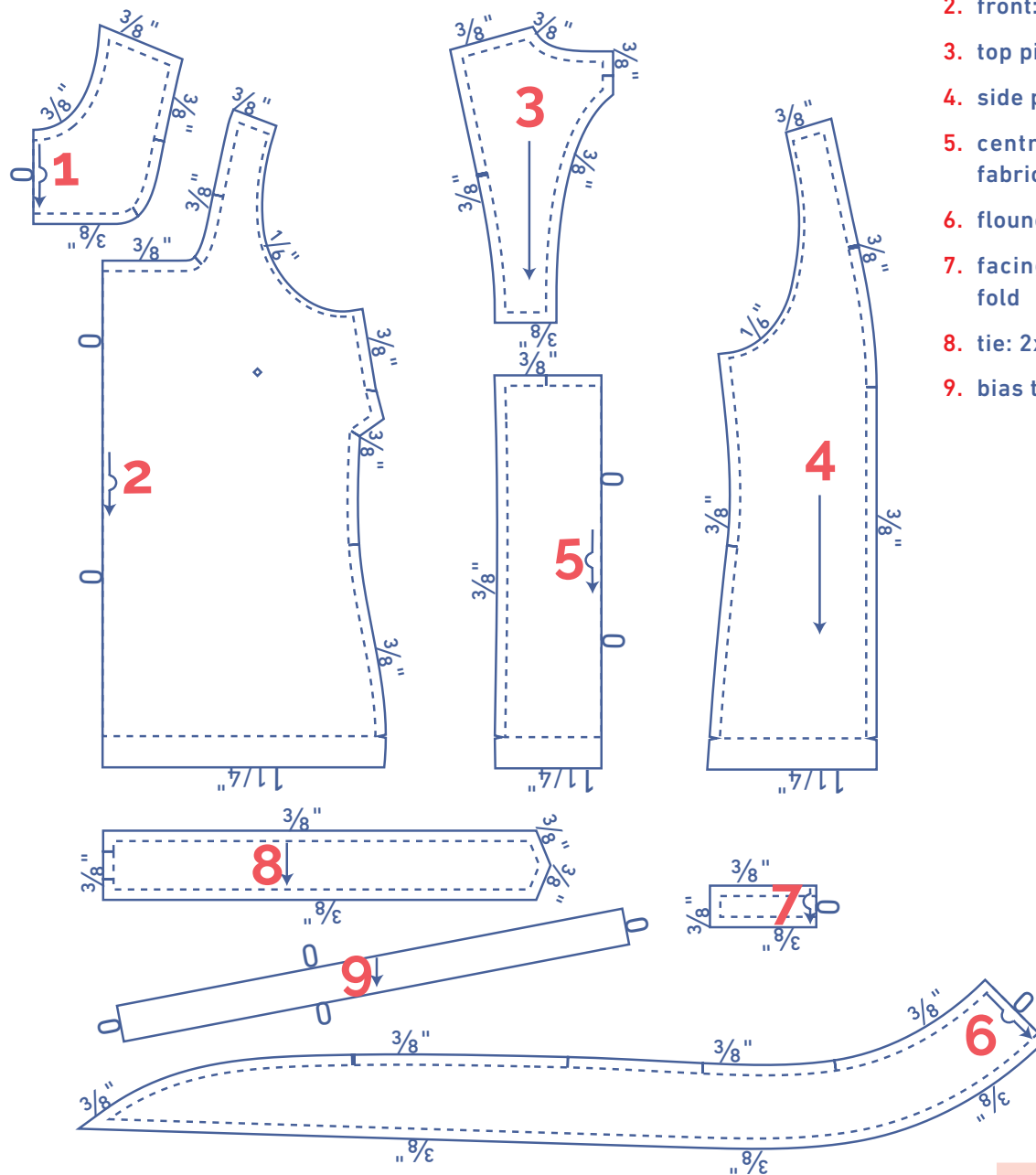
The Lola top looks stunning in delicate cotton, whether plain or in a subtle pattern or texture. Linen is also definitely a shoo-in. However, our personal recommendation for this pattern is... chambray!

Proud to be #Sewista



pattern pieces & seam allowances (in inches)

To sew the garment as described in the instructions, you must draw the illustrated seam allowances around the paper pattern pieces before cutting them out. If you are using a pdf version of the pattern, you may print it with or without seam allowances. If you print with seam allowances, the solid lines denote the cutting lines, and dashed lines denote the stitch lines. Check out the [video](#).

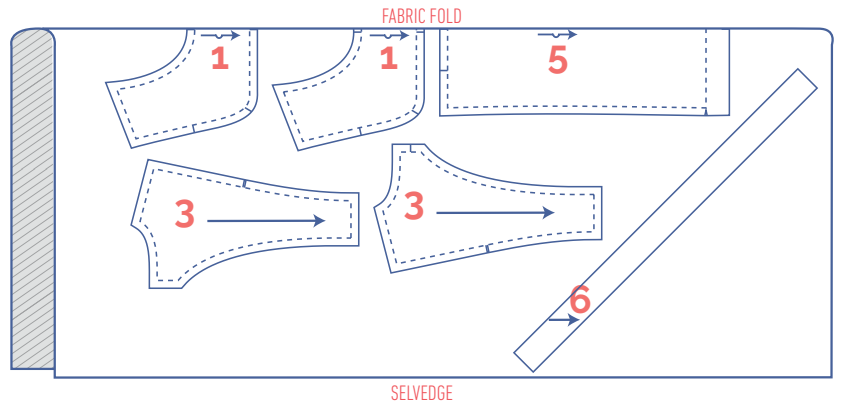
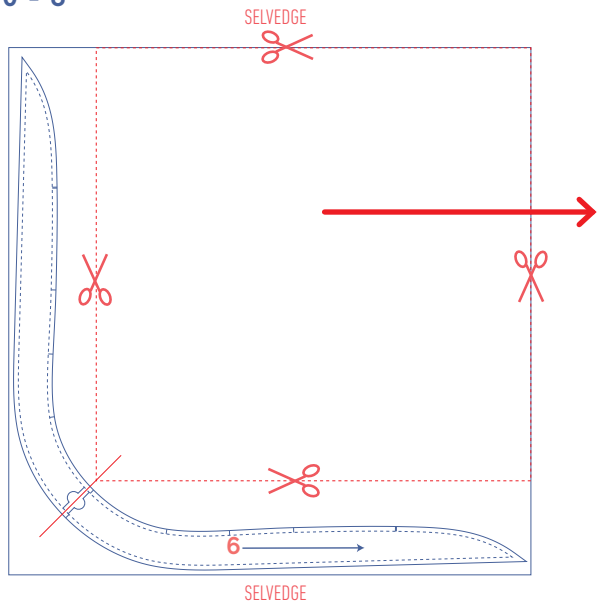


1. top piece: 2x on fabric fold
2. front: 1x on fabric fold
3. top piece back: 4x
4. side piece back: 2x
5. centre piece back: 1x on fabric fold
6. flounce: 1x on fabric fold
7. facing back: 1x on fabric fold
8. tie: 2x
9. bias tape armhole: 2x

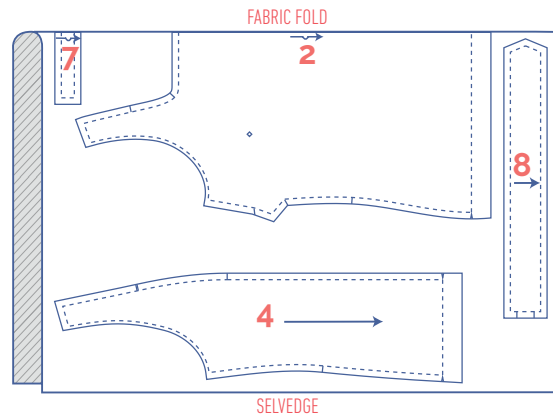
	material type
	fabric

standard fabric layout – solid fabrics fabric width 43"

0 - 8



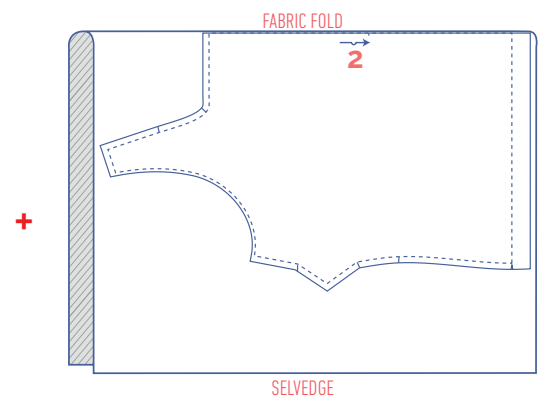
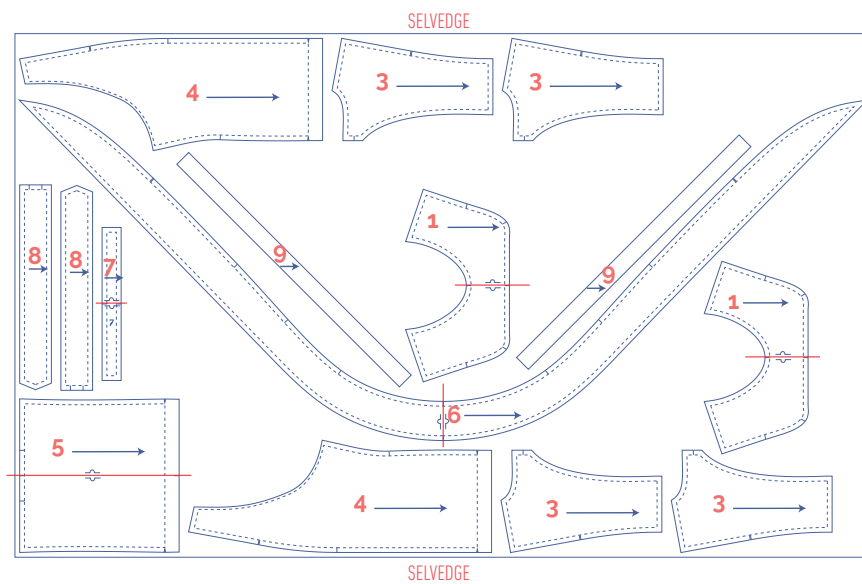
+



IMPORTANT

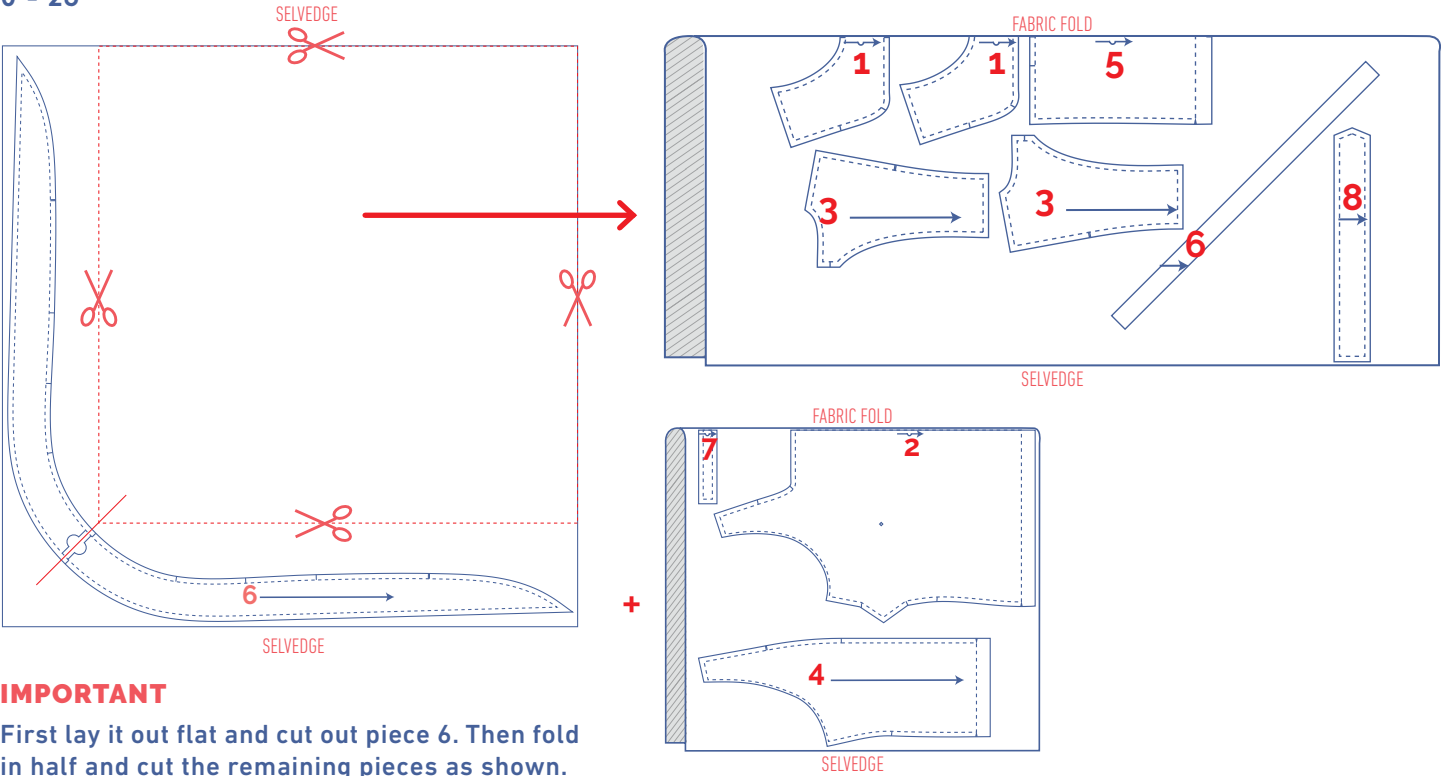
First lay it out flat and cut out piece 6. Then fold in half and cut the remaining pieces as shown.

10 - 26



standard fabric layout – solid fabrics
fabric width 55"

0 - 26



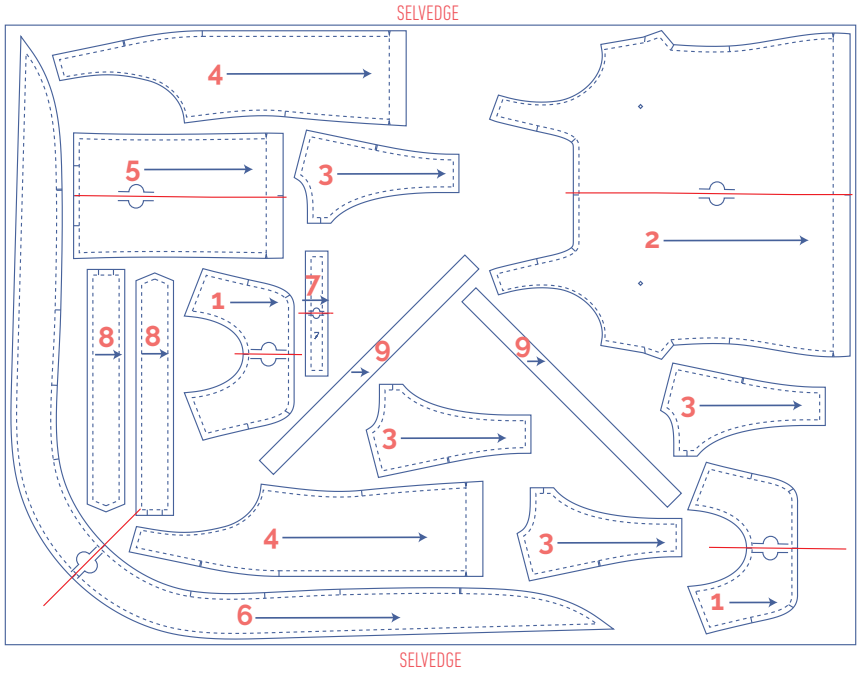
marking pattern pieces

	notch the pattern paper and fabric at the following points
	single notch
	double notch
V	V notch

	mark the following points using marking thread
	centre point

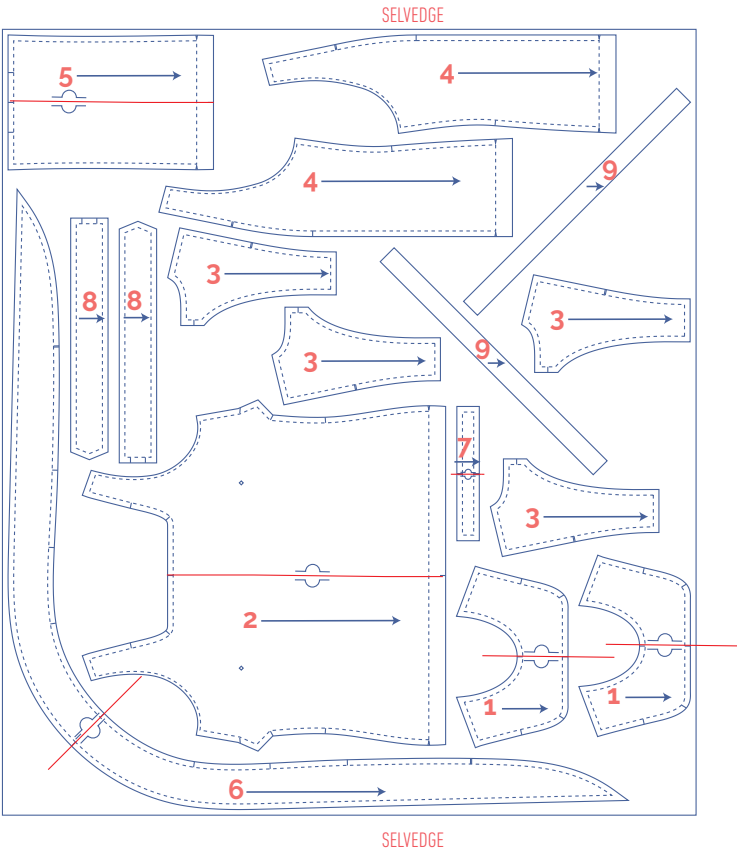
alternative fabric layout – solid fabrics
fabric width 43"

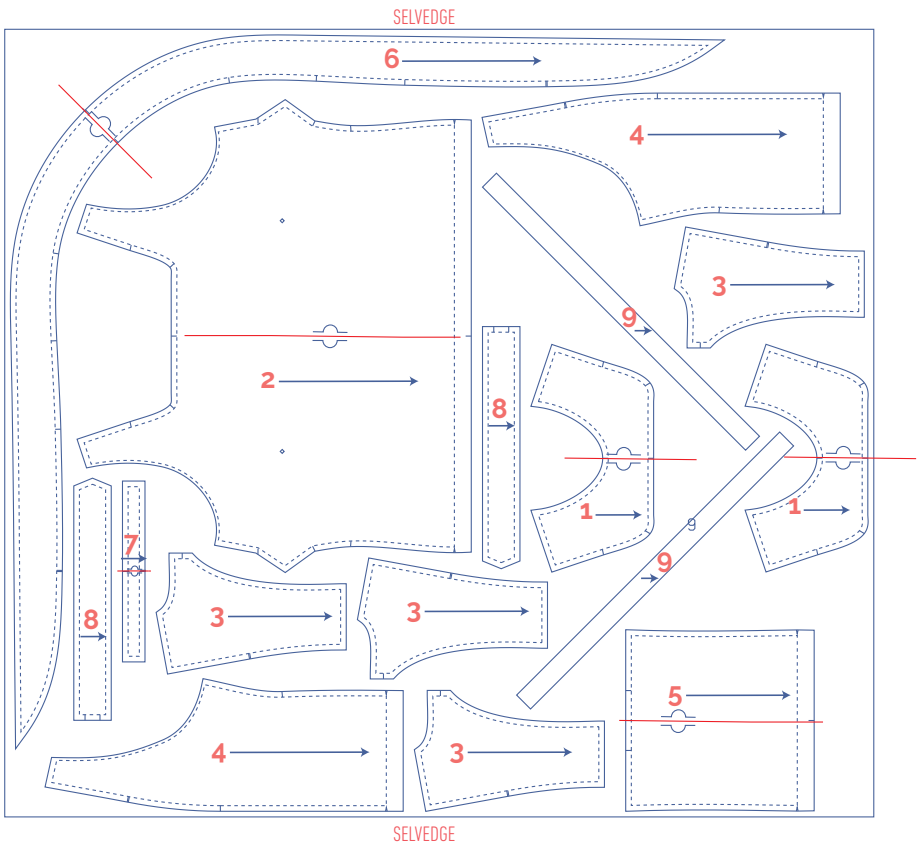
0 - 8



alternative fabric layout – solid fabrics
fabric width 43"

0 - 12





marking pattern pieces



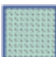
	Notch the pattern paper and fabric at the following points		Mark the following points using marking thread
	single notch		centre point
	double notch		
V	V notch		

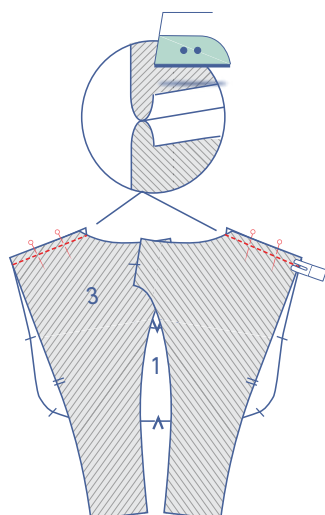
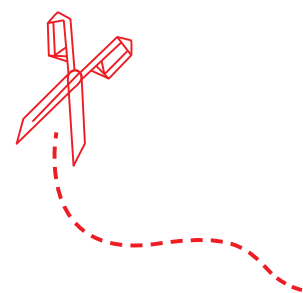
sewing instructions



The method used to finish the seams depends on the fabric used.
The pieces are always sewn together with the right sides of the fabric facing together, unless stated otherwise.

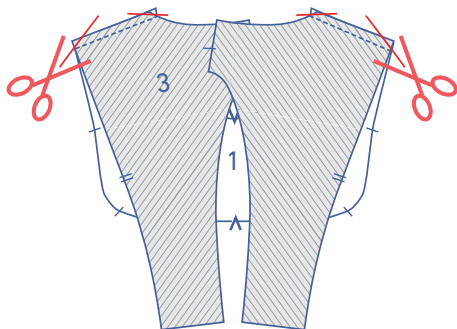


F	front
B	back
CF	centre front
CB	centre back
	right side
	wrong side
	elastic band

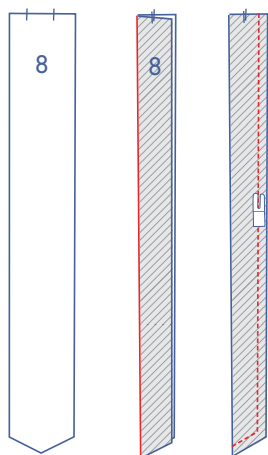


1

Pin and sew all shoulder seams of the top front (1) and top back (3) together. Press the seam allowances open.



Trim the seam allowance at the tips at an angle to prevent the fabric from bunching. Now construct the same again with the remaining top front (1) and 2x top back (3).

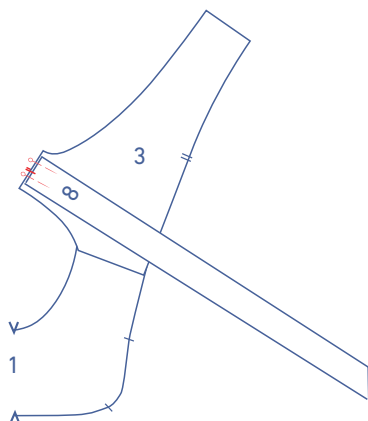


2

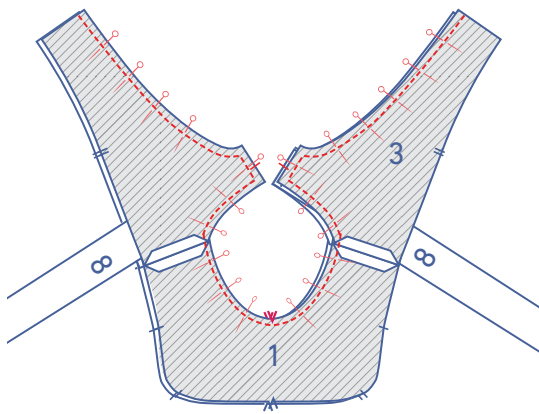
Fold the ties (8) in half lengthwise with the right sides together and sew the two sides indicated.



Turn the right way out.

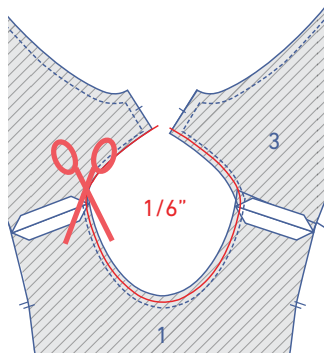


Pin the short end of the ties to the short end of the top piece back with the notches matching. Repeat for the other side.

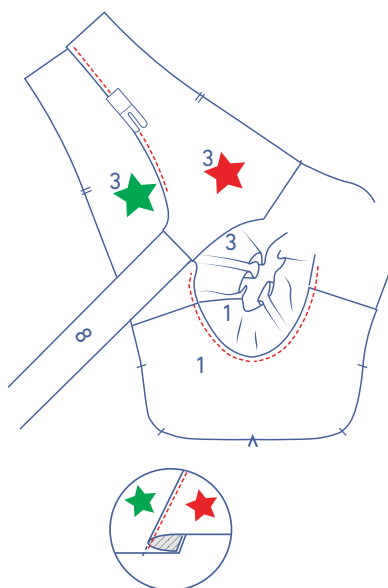


3

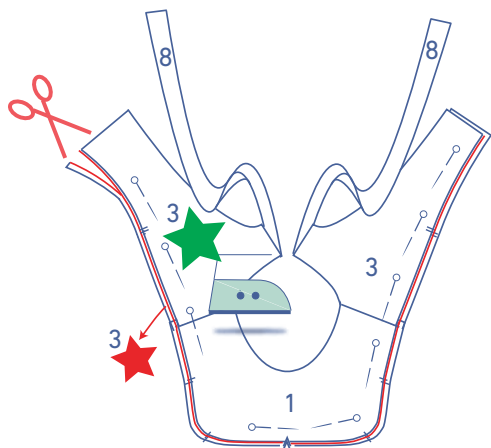
Take the other piece you created in step 1 and lay it on top of the piece with the ties attached. Sew together as indicated in the diagram.



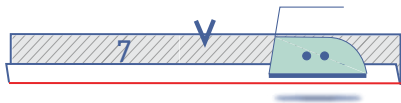
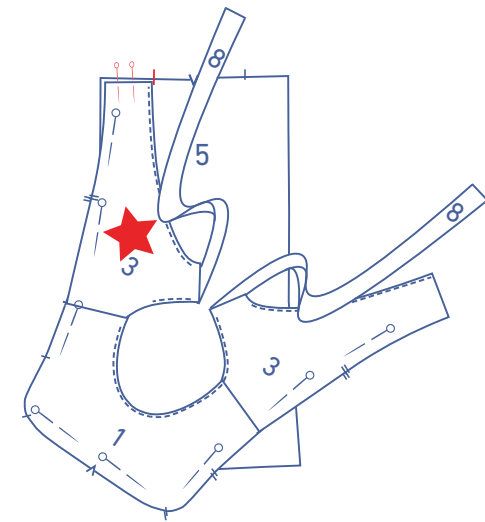
Trim the seam allowance on the neckline down by 1/6". This reduces bulk and allow the curves to lie flatter.



Fold 1 top piece over and sew this piece through all layers of fabric right next to the seam (top piece with the red star + seam allowance). It won't be possible to sew all the way to the corner, but sew off as far as you can.



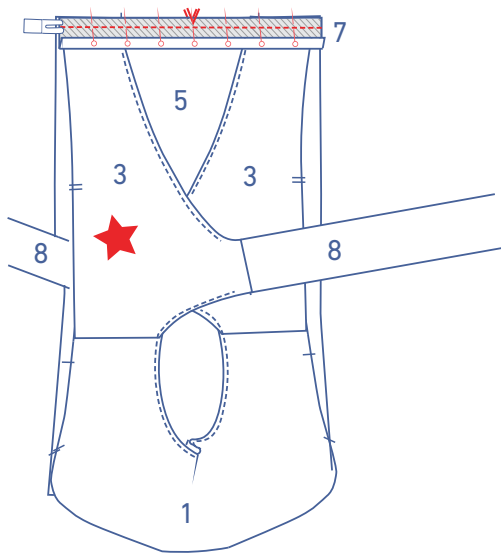
Neatly turn the top piece you've just sewn back onto the wrong side of the other top piece. Press flat and pin the raw edges together. Trim any excess seam allowance.



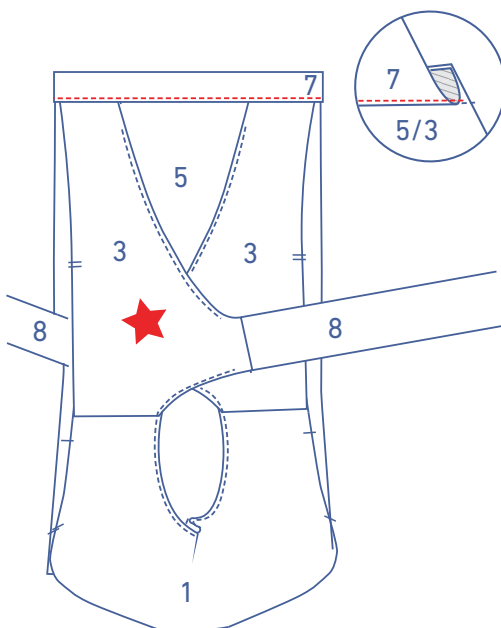
4

Pin the raw edges of the bottom of the top piece back and the top of the CB piece (5) together as shown. The finished edge of the top piece back should align with the notch.

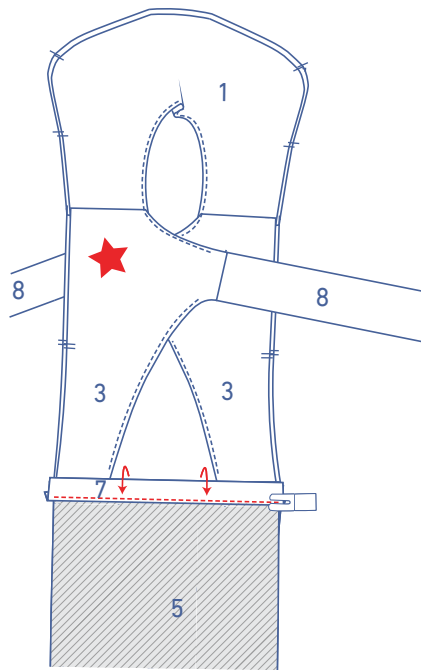
Press $\frac{3}{8}$ " of the long end of the back facing (7) towards the wrong side.



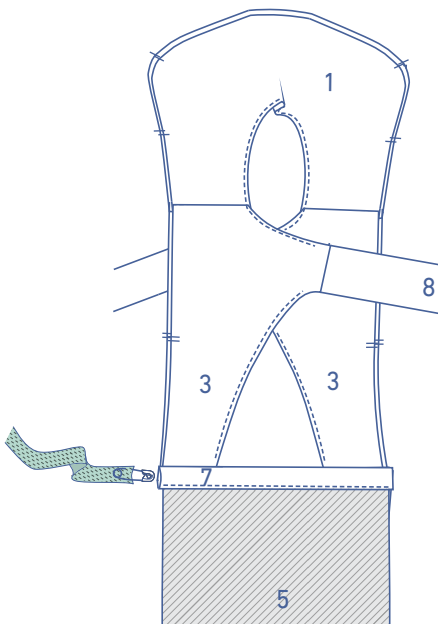
Pin and sew the top of the facing (unpressed edge) to the top of the CB piece (+ top piece back) as shown.



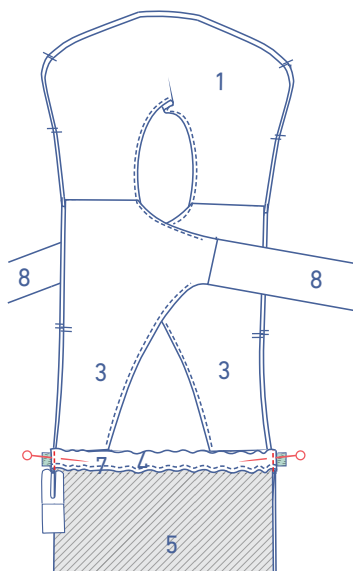
Fold the facing and the underlying seam allowance up and sew the facing through all layers of fabric (facing + underlying seam allowance) right next to the seam.



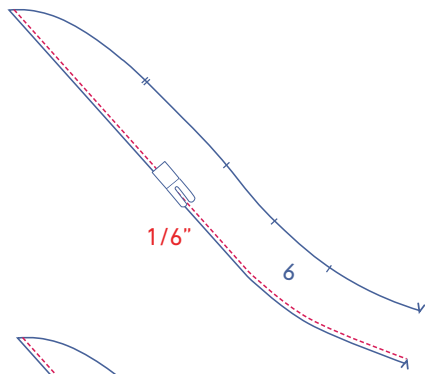
Fold the facing down and sew into place right next to the pressed edge at the bottom.



Thread the elastic through the casing.

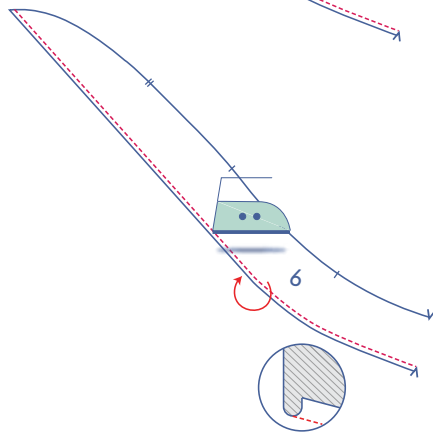


Sew the elastic ends into place along the raw edges of the CB piece.

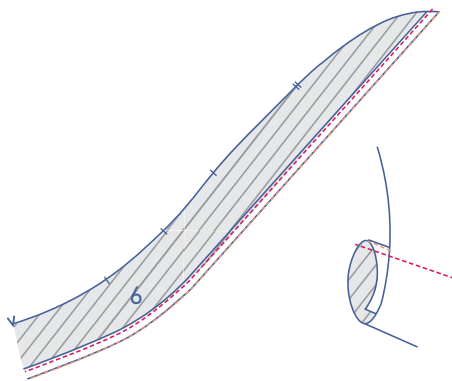


5

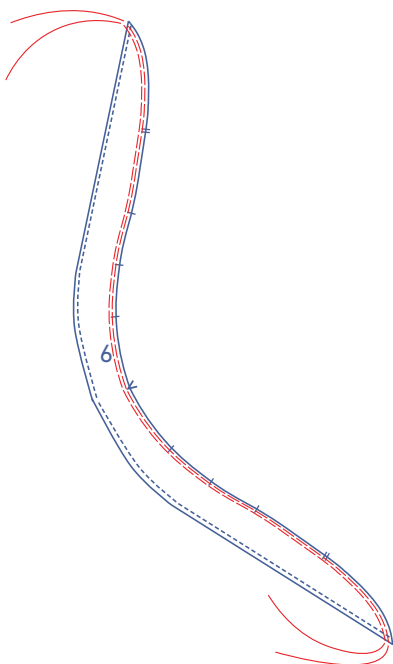
Sew the flounce (6) at 1/6" from the raw edge without notches.



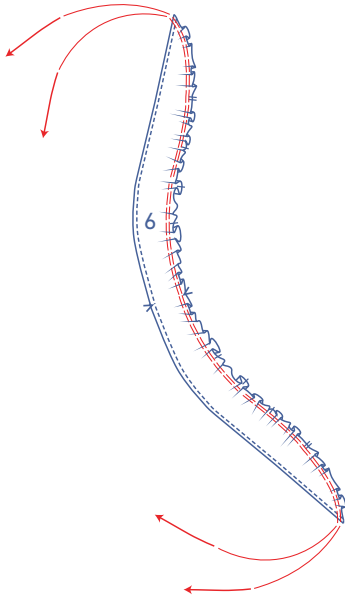
Press the raw edge from the stitching towards the wrong side.



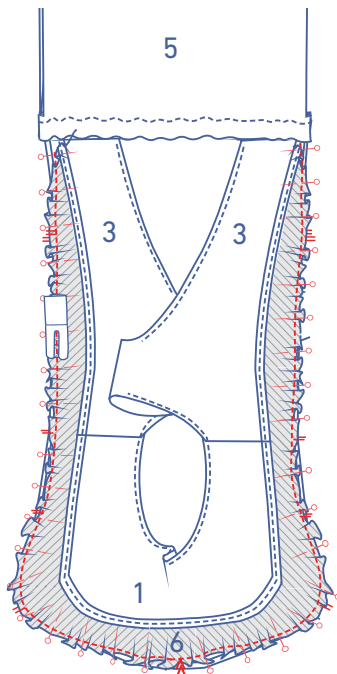
Fold up again and sew into place right next to the folded edge.



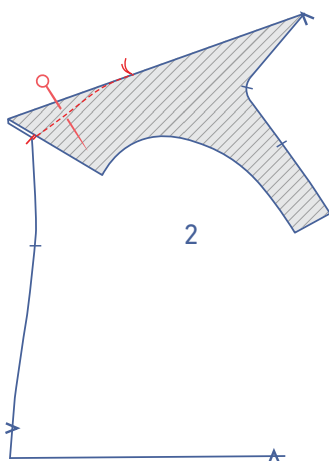
Sew 2 parallel rows of stitching along the other side with the raw edge using a long stitch at a low thread tension. Leave a length of thread at the start and end of the rows.



Carefully tug the ends of the threads to gather the fabric into ruffles.

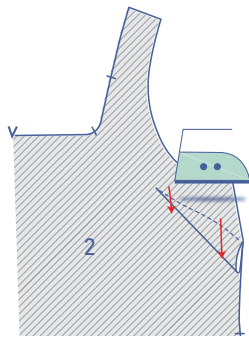


Pin the gathered raw edge of the ruffle with the raw edge of the bottom and sides of the top piece so that right sides are together. Distribute until the ruffles and notches of the flounce and top piece are matching. Sew into place at presser foot width from the raw edge.

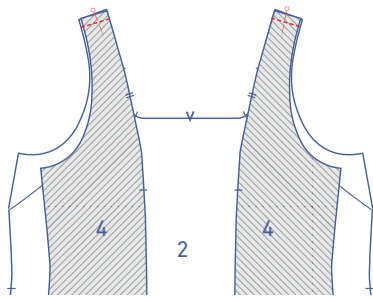


6

Fold the notches on the side seam of the front (2) together with the right sides of the fabric facing. Sew the dart or dart equivalent in a slightly curved line towards the marking thread. Stitch up to and just past the marking thread, so that you've sewn off the fabric. Snip the threads and make a knot.

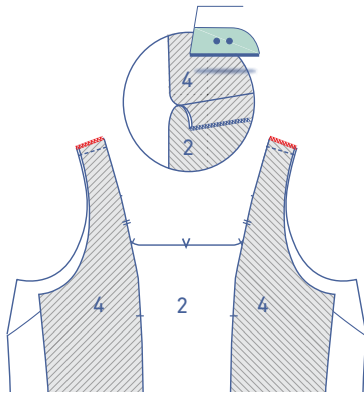


Turn the front over so that the wrong side is facing up.
Press the top of the dart down.



7

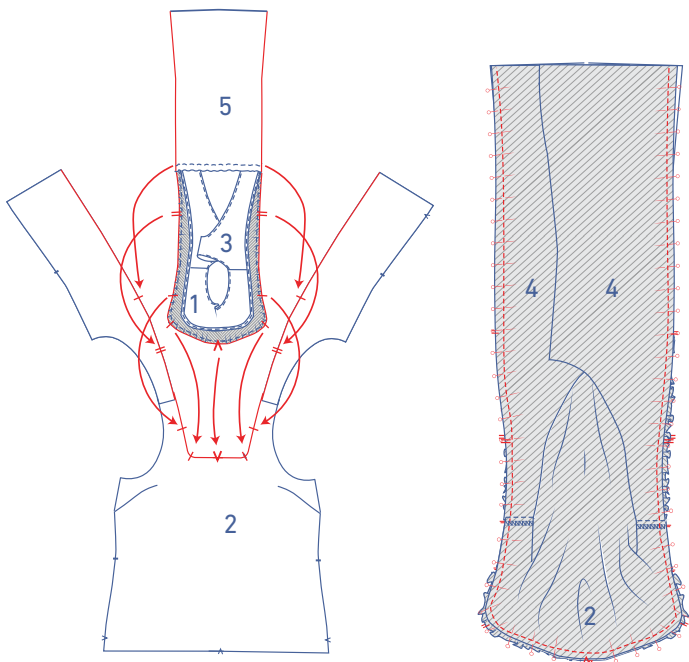
Pin and sew the shoulder seams of the front and back side piece (4) together.

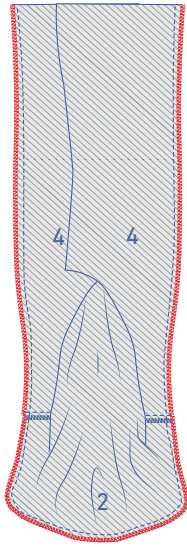


Finish the raw edges together with overlock stitching.
Press the seam allowance towards the front.

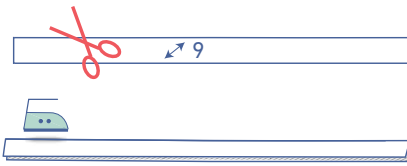
8

Pin and sew the indicated edges, matching the notches.



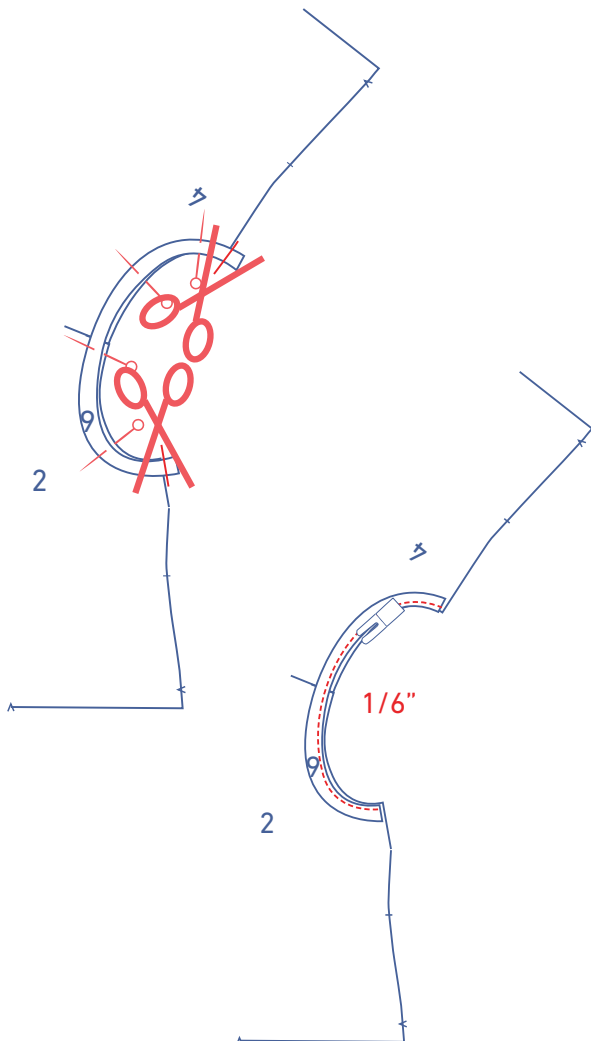


Finish the raw edges together with overlock stitching.



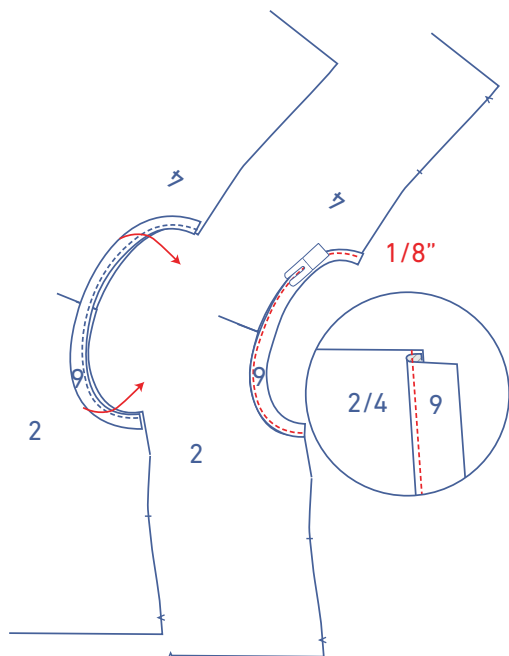
9

Press the bias tape for the armholes (9) in half lengthwise with the wrong sides touching.

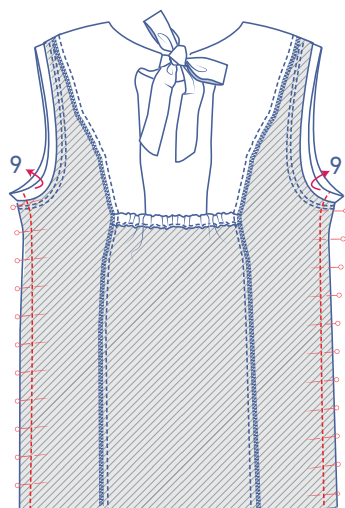


Sew the raw edges to the armhole. Snip off any excess tape. Stating the precise length isn't possible because the grainline is on the bias, i.e. it will be different for every fabric.

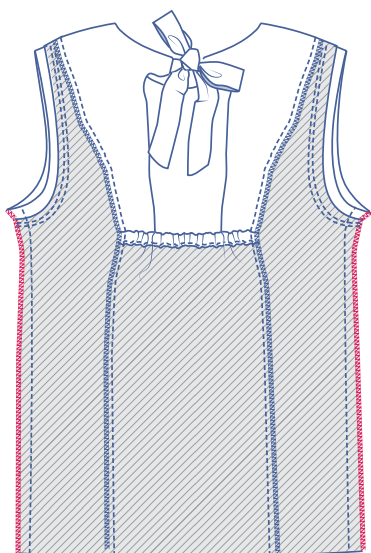
Sew into place at 1/6".



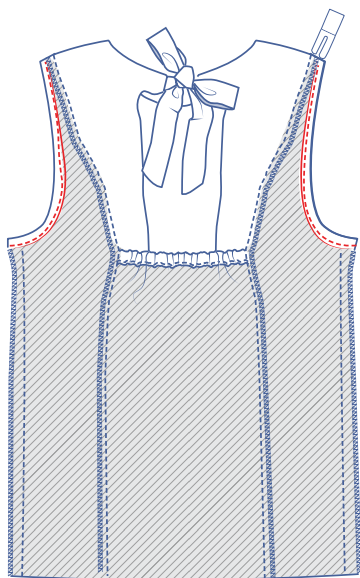
Fold the bias tape over and sew the bias tape through all layers right next to the seam (tape + seam allowance).



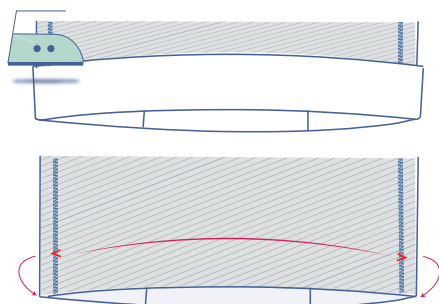
Pin and sew the side seams together (with the bias tape folded up).



Finish the raw edges together with overlock stitching.

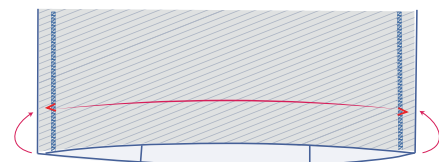


Fold the bias tape down and sew into place right next to the fold line.

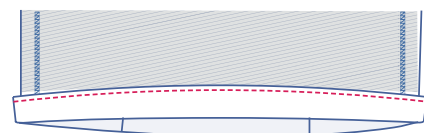
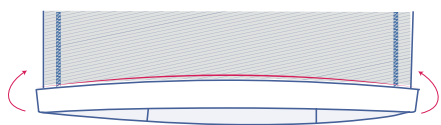


10

Press the hem allowance up and open back out.



Fold the raw edge to the fold line and then fold up again.



Sew into place.