

Danika by Fibre ood

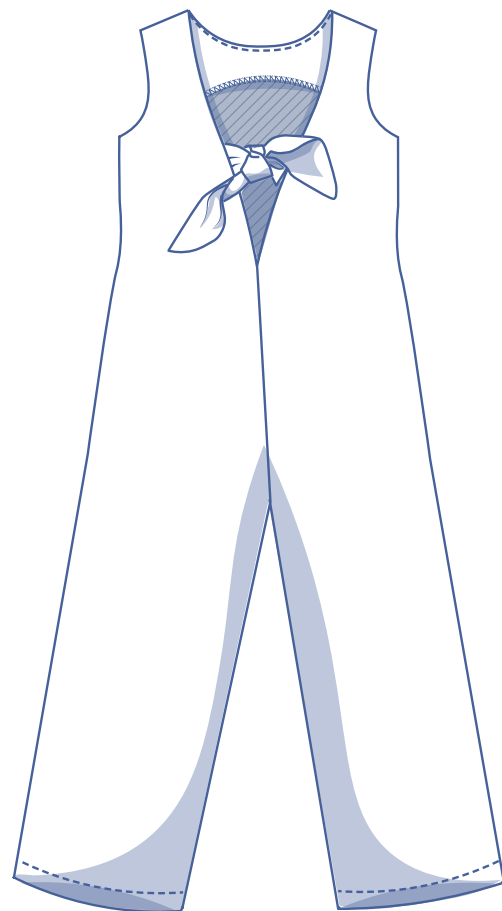
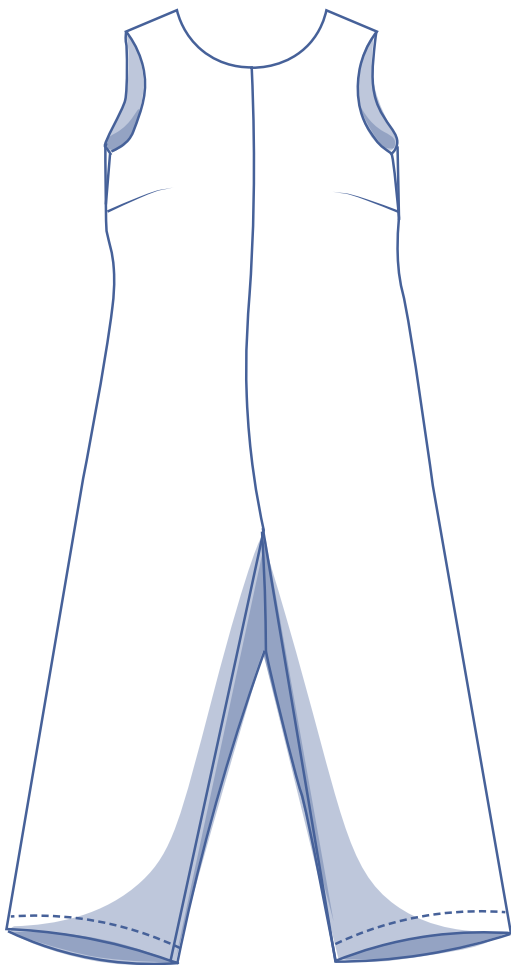


Danika by Fibre ood



0 - 26

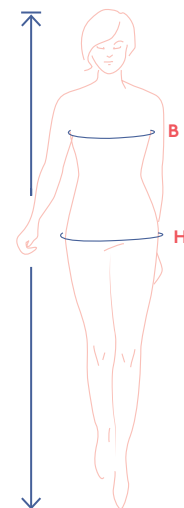
With an enticing tie back opening, Danika is a jumpsuit with astonishing flair. And that's all there is to it! No zips or other closures needed. The Danika's straight fit is a dream come true. You can slip in and out of it in a heartbeat. We made the jumpsuit in a playful Capri length. Have a different length in mind? The pattern is as easy to alter as is the style. Casual is where it's at, in denim or linen, with a pair of pretty mules. Or switch things up and go chic in satin and a pair of killer heels. Whatever you choose, Danika is sure to suit you to a tee.



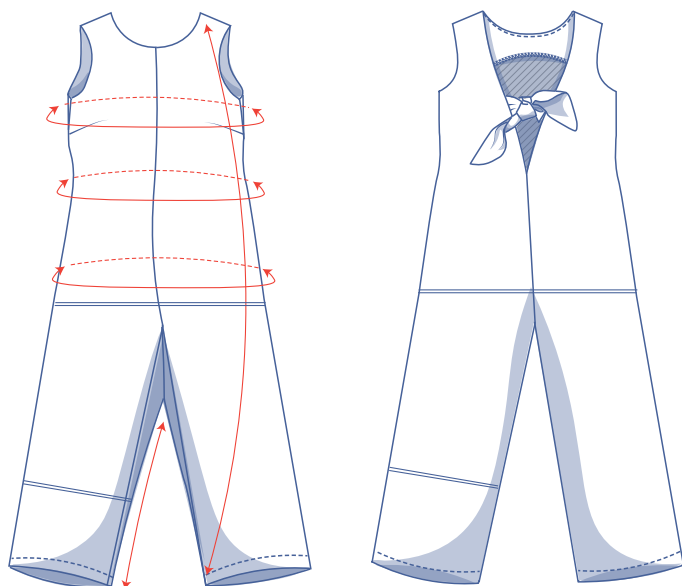
size chart (in inches)

size	0	2	4	6	8	10	12	14	16	18	20	22	24	26
body height	5'24"	5'38"	5'45"	5'48"	5'51"	5'54"	5'58"	5'61"	5'64"	5'64"	5'64"	5'64"	5'64"	5'64"
B (bust)	29.9	31.5	33.1	34.6	36.2	37.8	39.4	40.9	43.3	45.7	48	50.4	52.8	55.1
H (hip)	33.9	35.4	37	38.2	39.4	40.6	41.7	42.9	45.3	47.2	49.2	51.2	53.1	55.1

Choose your size based on your bust measurement. If your hips are wider than the corresponding hip measurements in the size chart, check the hip measurements in the chart below to see if there's enough room or whether the pattern needs to be altered. It's easy to do. Simply trace the hip size at the hip point and blend the lines..



finished garment measurements (in inches)



— shorten or lengthen the pattern here

This chart's measurements are the pattern measurements based on used the fabric type and serve as a reference. Ease (on top of the exact body measurements) has been added for a more comfortable fit. Danika is designed to have a looser cut. Go a size smaller or larger based on the preferred cut.

Compare the stated lengths to the measured or desired lengths. **Shorten** or **lengthen** the trouser legs and/or rise by cutting the pattern pieces at the indicated double lines. Then either increase the distance between the cut pieces by the desired amount (to lengthen) or overlap the pieces (to shorten). Make sure that the CF and CB lines and the side seams are always straight.



IMPORTANT

The amount of fabric used may change based on the alterations.

size	0	2	4	6	8	10	12	14	16	18	20	22	24	26
length	49.20	49.50	49.70	50	50.30	50.50	50.80	51.10	52.10	52.50	53	53.40	53.80	54.20
bust	33.70	35.20	36.70	38.20	39.70	41.10	42.60	44.10	46.80	48.90	51.10	53.20	55.30	57.50
waistline	32.70	33.90	35.00	36.60	38.20	39.80	40.60	42.10	44.50	46.90	49.20	51.60	53.90	56.30
hips	36.60	38.20	39.80	41	42.10	43.30	44.50	45.70	48.10	50	52	54	55.90	57.90
inseam length	20.50	20.50	20.50	20.50	20.50	20.50	20.50	20.50	20.50	20.60	20.60	20.60	20.60	20.60

supplies



- Thread
- Iron-on interfacing: max. $\frac{3}{4}$ yd
- Fabric: see table

fabric		0	2	4	6	8	10	12	14	16	18	20	22	24	26
fabric width 43"	yd	3	3	3	3	$3\frac{1}{4}$	$3\frac{1}{4}$	$3\frac{1}{2}$	$3\frac{1}{2}$	$3\frac{3}{4}$	$3\frac{3}{4}$	4	4	$4\frac{1}{4}$	$4\frac{3}{4}$
fabric width 55"	yd	$2\frac{1}{4}$	$2\frac{1}{4}$	$2\frac{1}{4}$	$2\frac{1}{4}$	$2\frac{1}{2}$	$2\frac{1}{2}$	$2\frac{1}{2}$	$2\frac{1}{2}$	$3\frac{1}{4}$	$3\frac{1}{2}$	$3\frac{1}{2}$	$3\frac{1}{2}$	$3\frac{3}{4}$	4

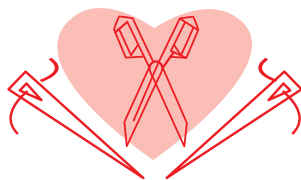
The corresponding fabric layout can be found on page 6 of these sewing instructions.

fabric advice



Danika was born for woven fabrics, such as linen, cotton, chambray, viscose (crepe), polyester crepe, or Tencel. Still have your heart set on a knit? No problem, as long as it isn't too thin or flimsy. To get those details perfectly sewn, any jersey you pick has to have sufficient body.

Proud to be #Sewista



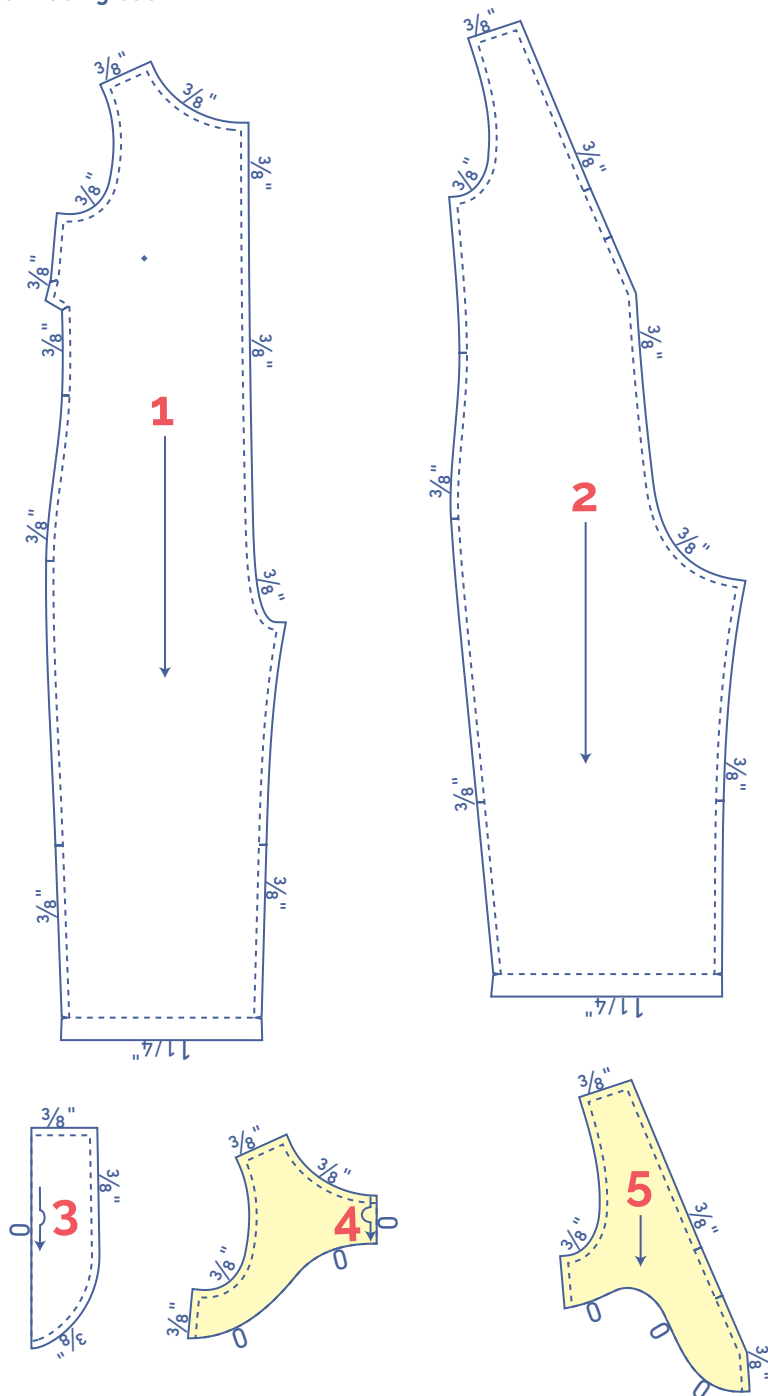
pattern pieces & seam allowances (in inches)

To sew the garment as described in the instructions, you must draw the illustrated seam allowances around the paper pattern pieces before cutting them out. If you are using a pdf version of the pattern, you may print it with or without seam allowances. If you print with seam allowances, the solid lines denote the cutting lines, and dashed lines denote the stitch lines. Check out the [video](#).

1. front: 2x
2. back: 2x
3. tie: 2x on fabric fold
4. facing front: 1x on fabric fold
5. facing back: 2x

IMPORTANT

The pieces highlighted in light yellow have iron-on interfacing attached to the wrong side.

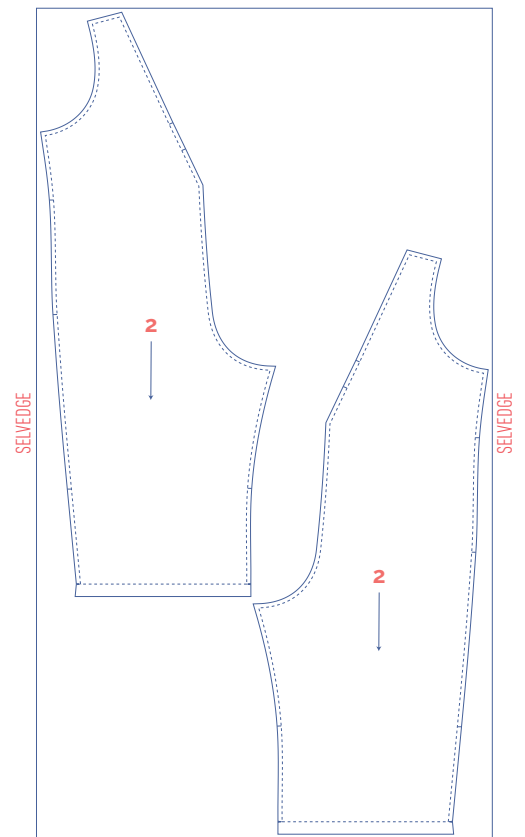
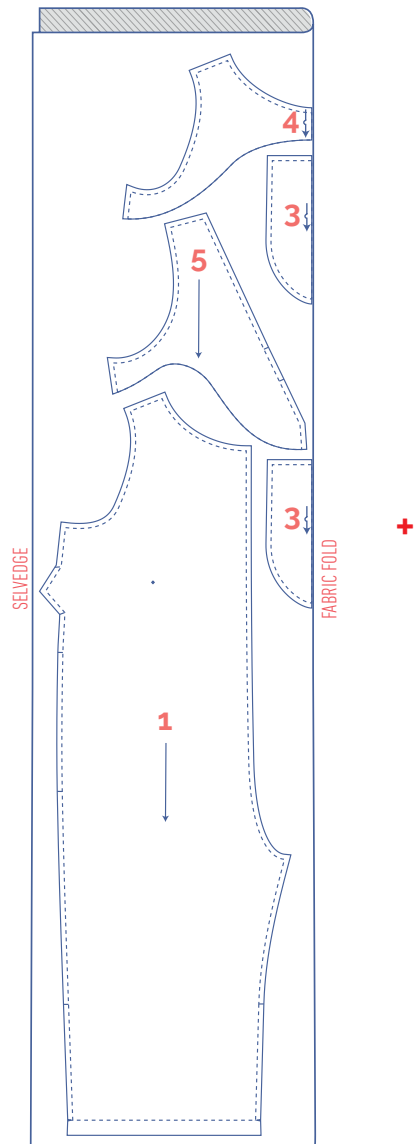
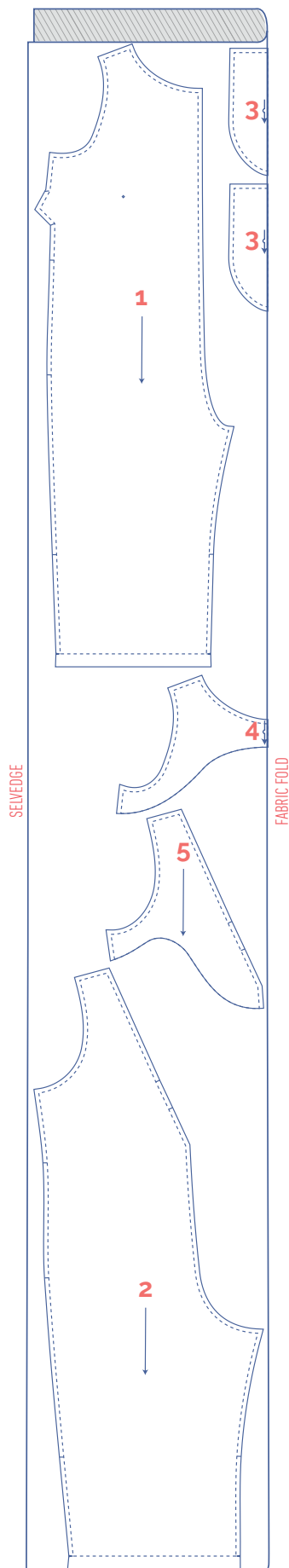


?	material type
	fabric
	iron-on interfacing

fabric layout – solid fabrics
fabric width 43"

0 - 22

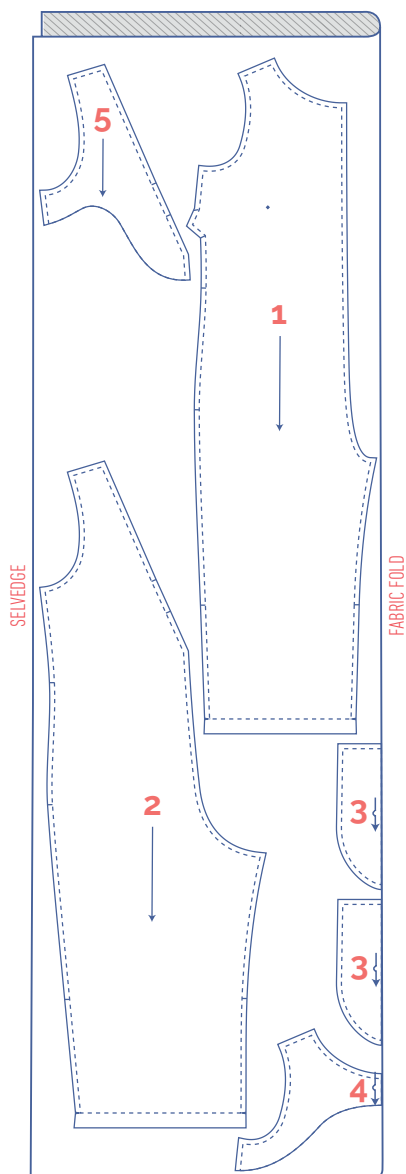
24 - 26



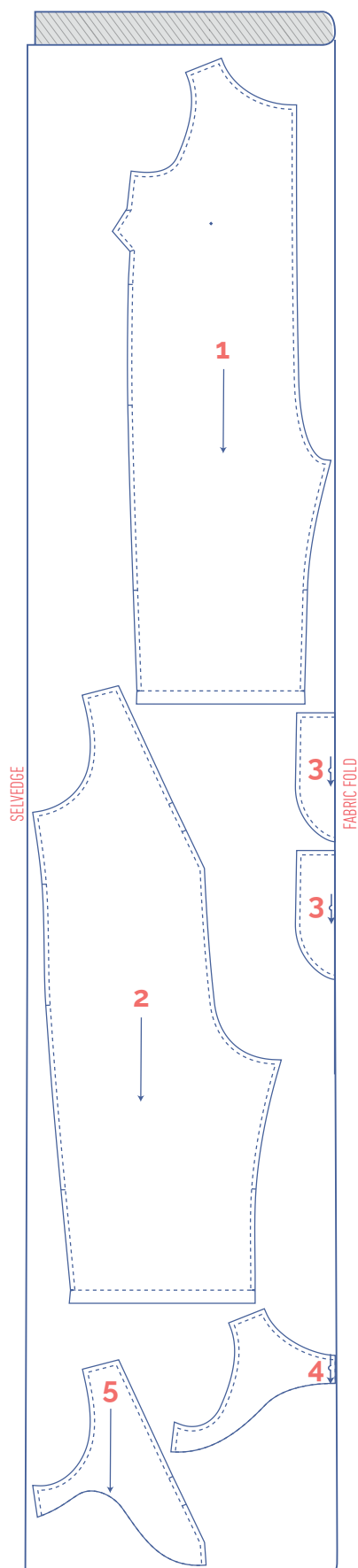
fabric layout – solid fabrics

fabric width 55"

0 - 14



16 - 26



marking pattern pieces



notch the pattern paper and fabric at the following points



single notch



V notch



mark the following points using marking thread



centre point

sewing instructions



The method used to finish sewing the garment depends on the fabric used. The pieces are always sewn together with the right sides of the fabric facing together, unless stated otherwise.

F front

B back

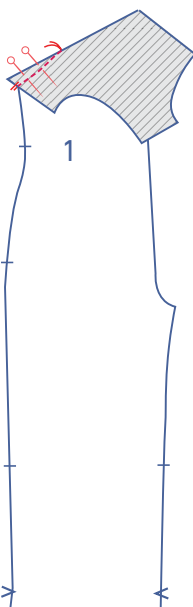
CF centre front

CB centre back

 right side

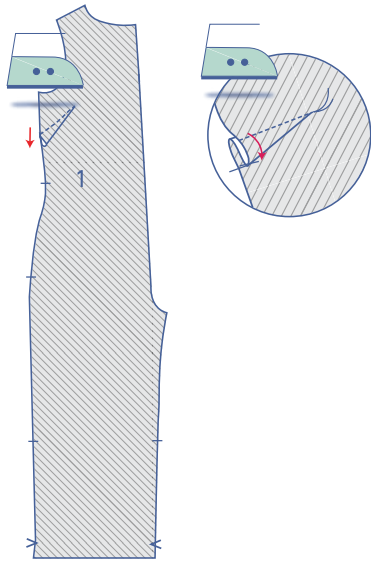
 wrong side

 iron-on interfacing

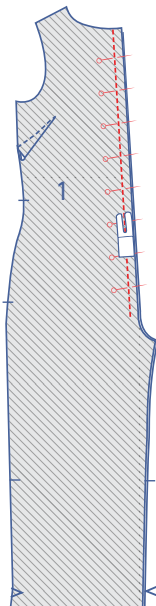


1

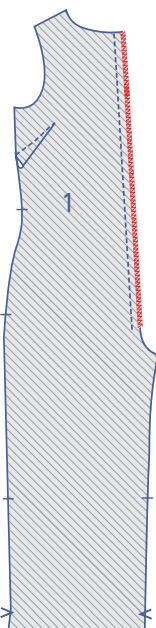
Fold the notches on the side seam of the front (1) together with the right sides of the fabric facing. Sew the dart or in a slightly curved line towards the marking thread. Stitch up to and just past the marking thread, so that you've sewn off the fabric. Snip the threads and make a knot.



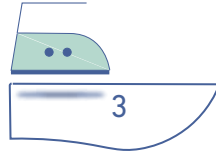
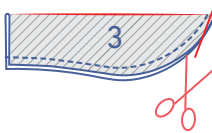
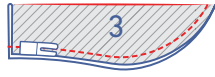
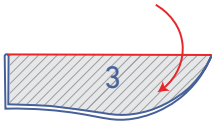
Turn the front over so that the wrong side is facing up.
Press the dart downwards.



Pin and sew the CF seams, stopping just before the curve
(the inseam).



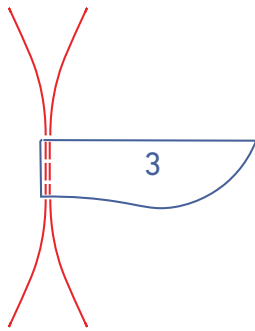
Finish these raw edges together with overlock stitching.



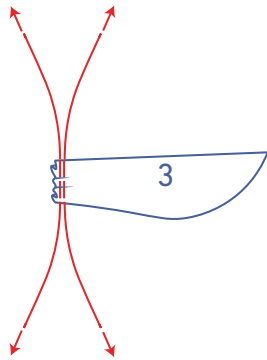
2

Fold the ties in half lengthwise, with the right sides of the fabric facing. Sew the curved edge closed as indicated.

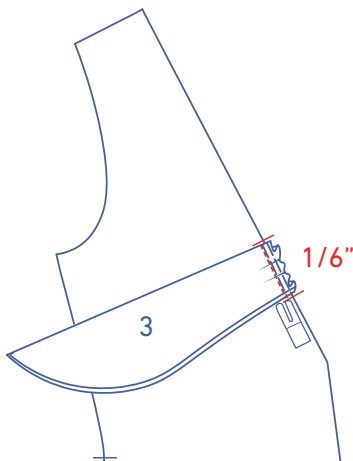
Trim the seam allowance to make sure the tip of the tie isn't too bulky. Turn the right way out and press neatly flat.



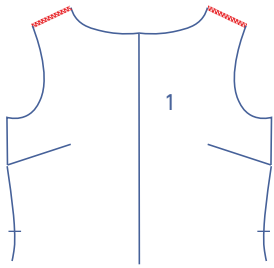
Sew two parallel rows of stitching along the short end of the tie using a long stitch length and at a lower thread tension. Leave the thread tails long.



Gently pull the ends of the threads so that the fabric gathers.

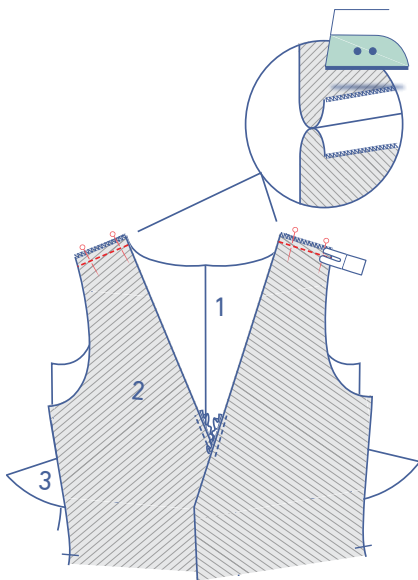
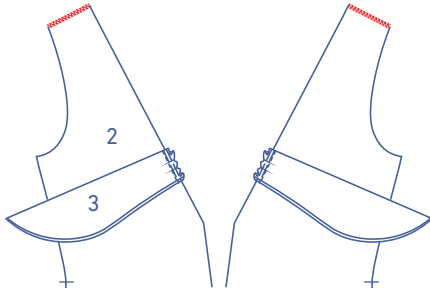


Pin the short end to the back (2). Make sure that it fits perfectly between the notches. Sew into place at 1/6" from the raw edge.



3

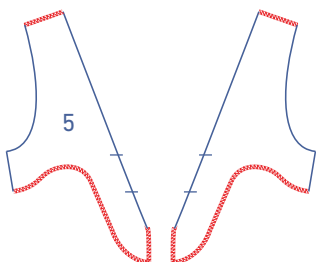
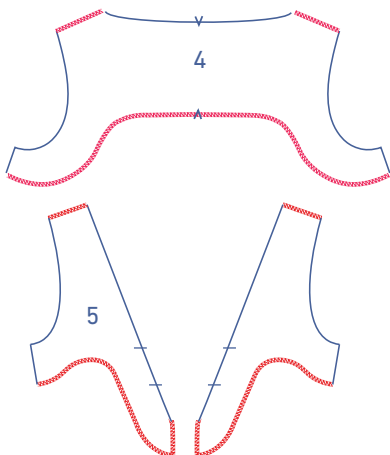
Finish the shoulder seams of the front and back with overlock stitching.

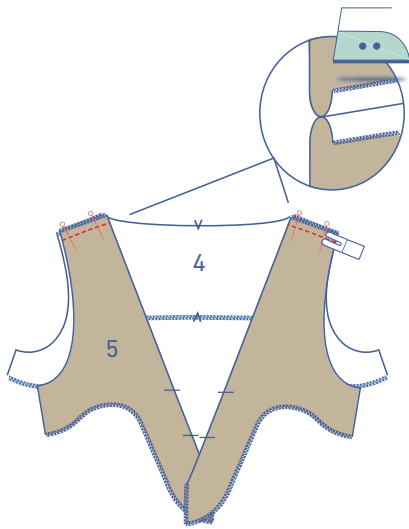


Pin and sew the shoulder seams. Press the seam allowances open.

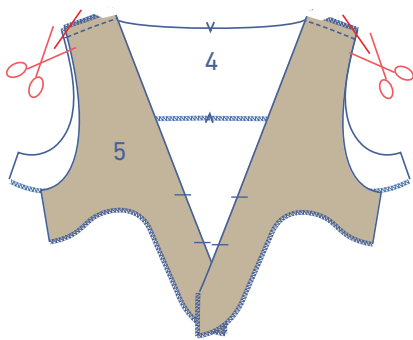
4

Overlock the shoulder seams and bottoms of the front facing (4) and the back facing (5).

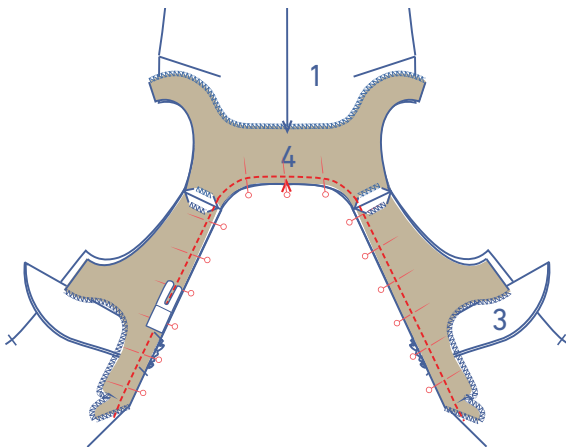




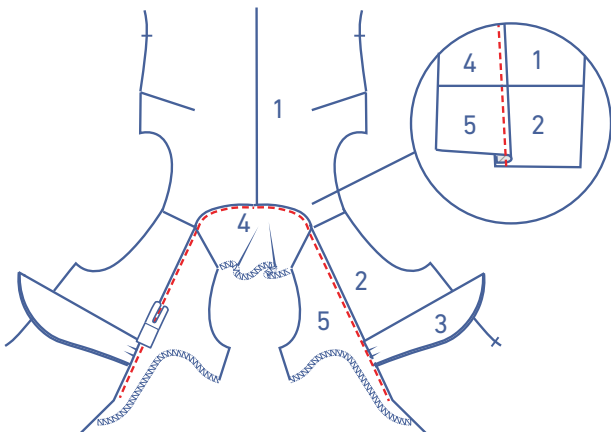
Pin and sew the shoulder seams of the facing pieces together and press the seam allowances open.



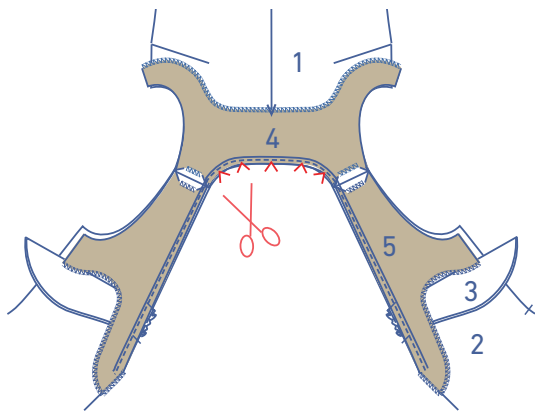
Snip the ends of the seam allowance off at an angle to reduce bulk.



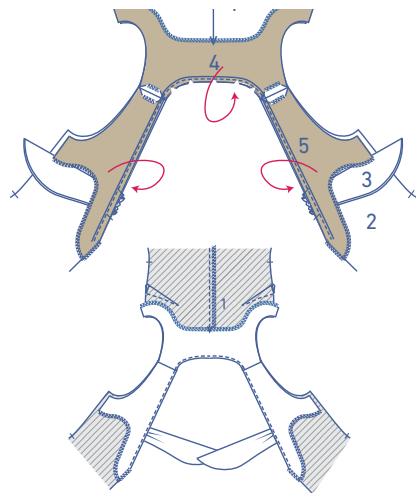
Place the facings over the main body, right sides together as shown. Pin and sew the neckline facing to the neckline with notches matching.



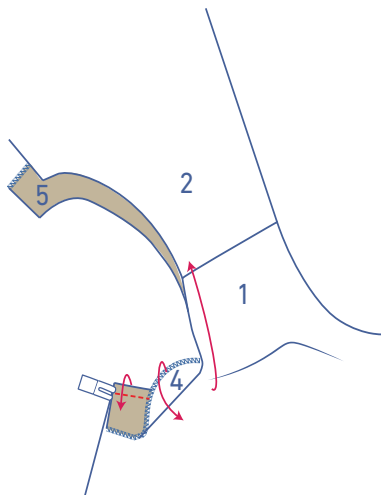
Flip the facing to the right side, and use your fingers to push the seam allowance towards the facing. Sew right next to the seam through all layers (facing + underlying seam allowance).



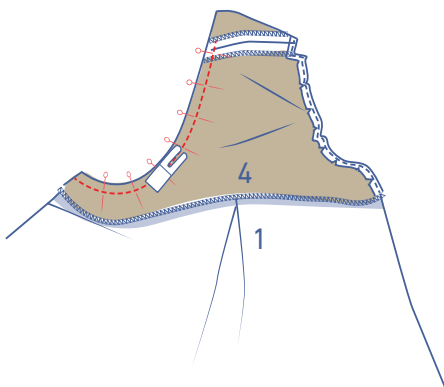
Fold the facing back over and snip into several places along the neckline's seam allowance. This will allow the curves to lie flat.



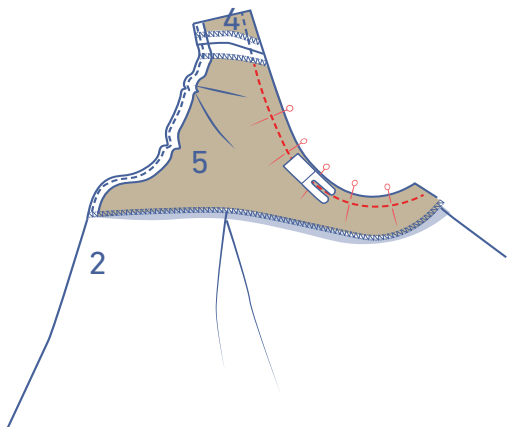
Fold the facing neatly back so the wrong sides of the facing and body are touching.



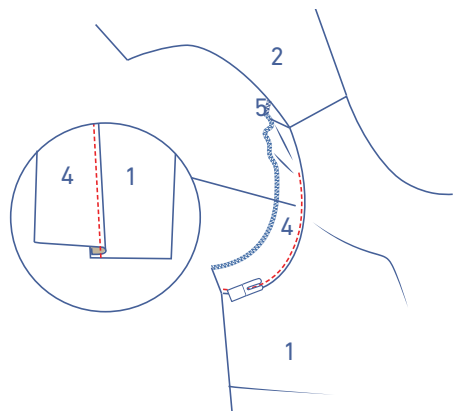
Now, join together the facing to the main body. Fold the seam allowances of the armhole facing and the jumpsuit armhole together at the bottom of the armhole with the right sides facing.



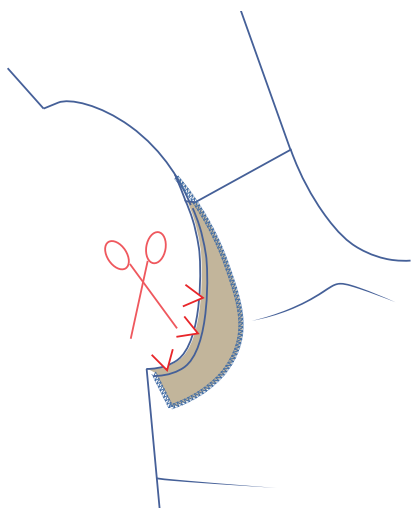
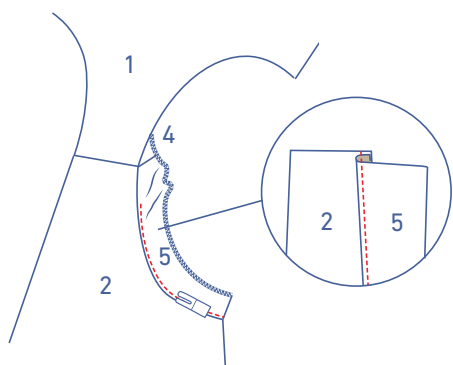
Start from the side seam and sew both armholes together. Do this in app. 1" increments: match the raw edges and sew app. 1". Match both raw edges again and sew another 1" section, etc. Continue until you've sewn just past the shoulder seam.



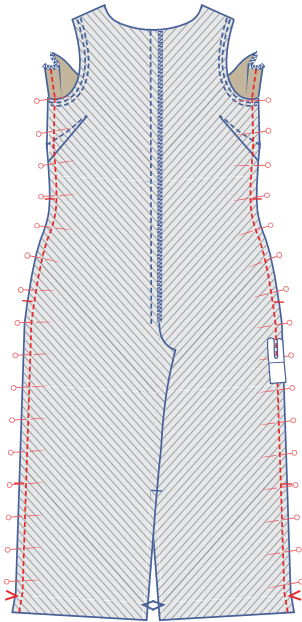
Now repeat for the back. Fold the seam allowance of the armhole facing (5) and jumpsuit armhole (2) together, past the shoulder seam. Sew from the shoulder to the bottom of the armhole (starting from the end of your previous stitching).



Fold the facing and the seam allowance over towards the facing. Sew the facing through all layers (facing + underlying seam allowance) of fabric right next to the seam. Always sew off as far as you can. Stop sewing and start again down the other side of the armhole. It might seem like a lot of fiddling, but have faith. You're on the right track as long as you meticulously follow the instructions.

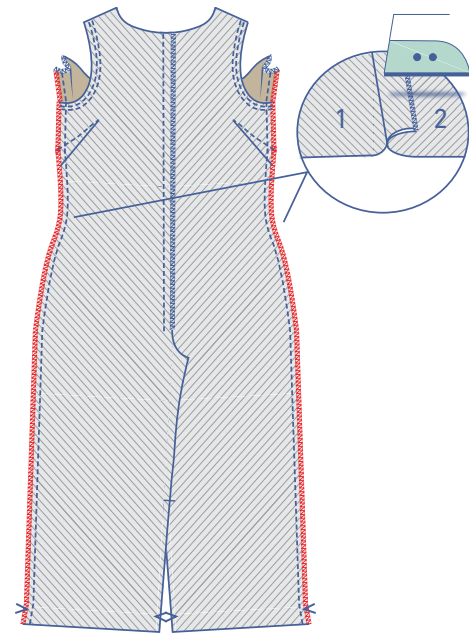


Fold the facing over and snip into several places along the the armhole's seam allowance so that you have a nice clean curve when you're done. If you don't do this, the seams are likely to rip later.

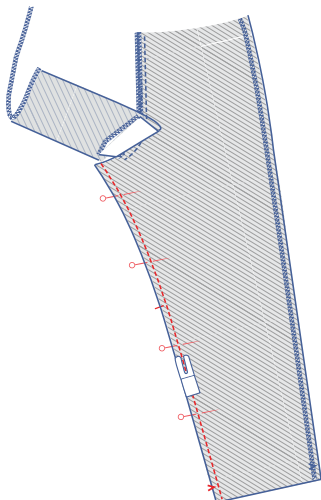


5

Pin and sew the side seams with the interfaced pieces folded up and the notches matching.

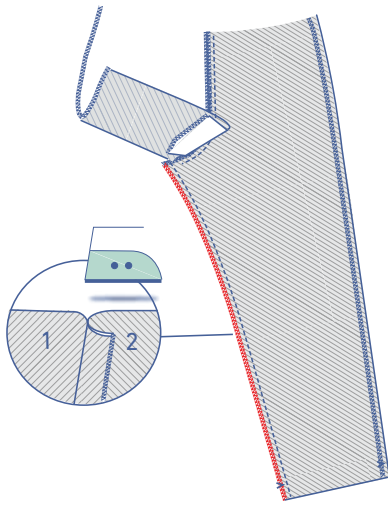


Finish the raw edges together with overlock stitching. Press the seam allowance towards the back.



6

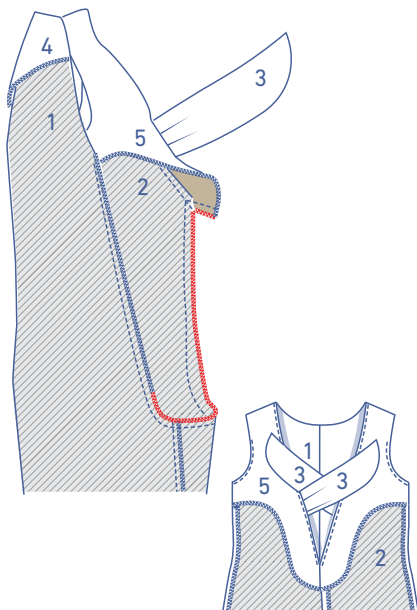
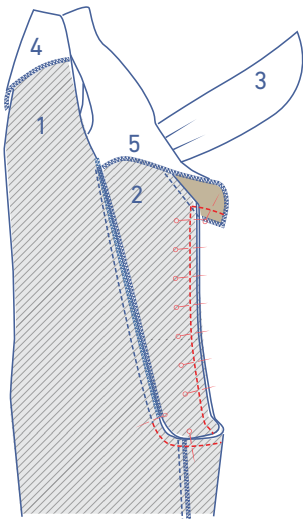
Pin and sew the inseams together.



Finish the raw edges together with overlock stitching.
Press the seam allowance to one side.

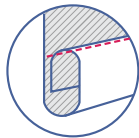
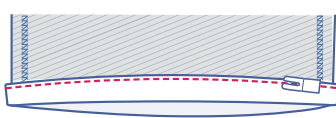
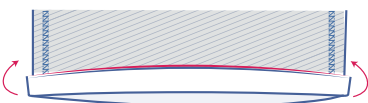
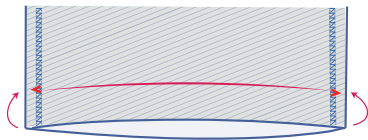
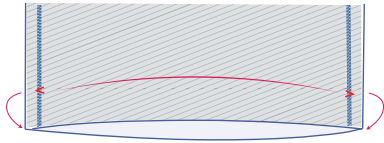
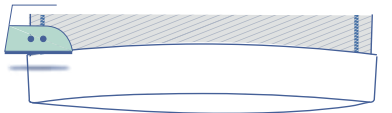
7

Slide one trouser leg into the other and sew the crotch seam together. Start sewing from the stitching at the CF seam. The interfaced pieces of the back should be folded up. Sew up to the neckline of the CB. Leave the needle in the fabric, lift the presser foot, turn the fabric, lower the presser foot back down and now sew the seam of the interfaced pieces.



Finish the raw edges together. Press the seam allowance to one side.

Then fold the facing neatly onto the wrong side.

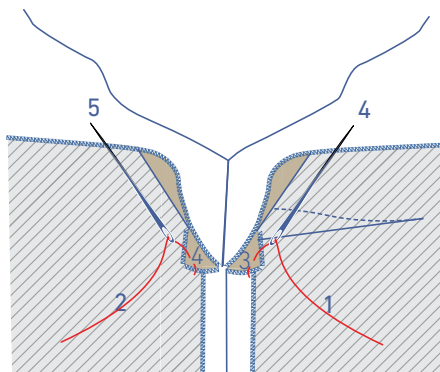


8

Press the hem allowance over and open back out.

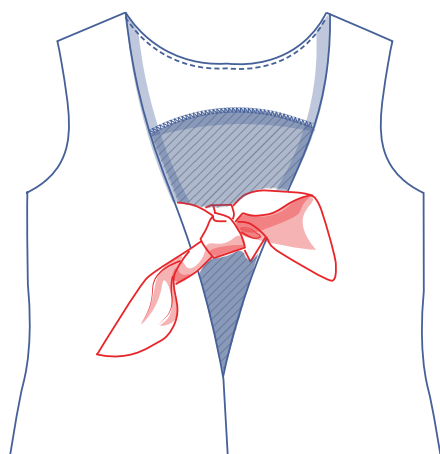
Match the raw edge to the pressed fold line and fold again.

Sew the hem allowance into place next to the folded edge.



9

Attach the interfaced pieces to the shoulder, side and CB seams by sewing the matching seam allowances of the facing and jumpsuit together by hand.



Knot the ties (with a double knot) to make a pretty 'bow'.