

Colette by Fibre ⚡ood



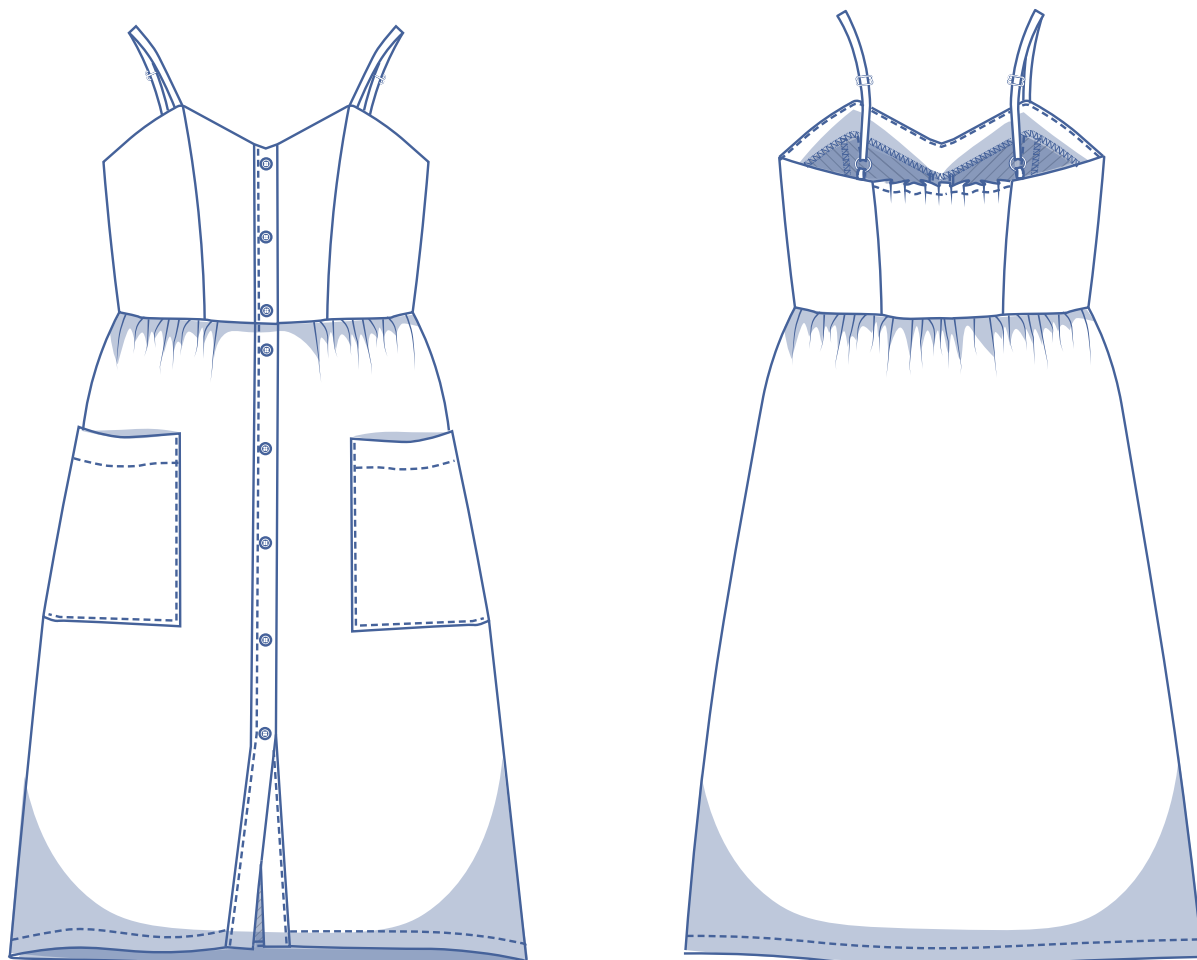
Colette by Fibre ood

***✂✂



0 - 26

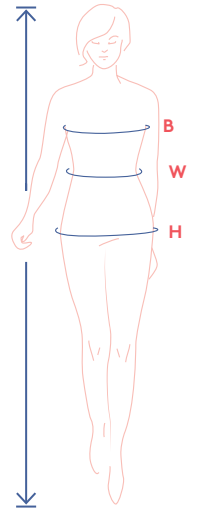
Surprise! The charming Colette looks like a button front dress, but don't be deceived! The real closure is the invisible zip hidden in the side seam. This pattern keeps you perfectly safe from prying eyes, so you can go braless on those sultry summer days. Even better, the dress features a somewhat higher waist – saving you from having to suck your tummy in. Colette is a girly sort of casual that still manages to look elegant thanks to the fitted top, A-line skirt and the slit at the front. Wanna bet that this dress will have you whistling a happy tune?



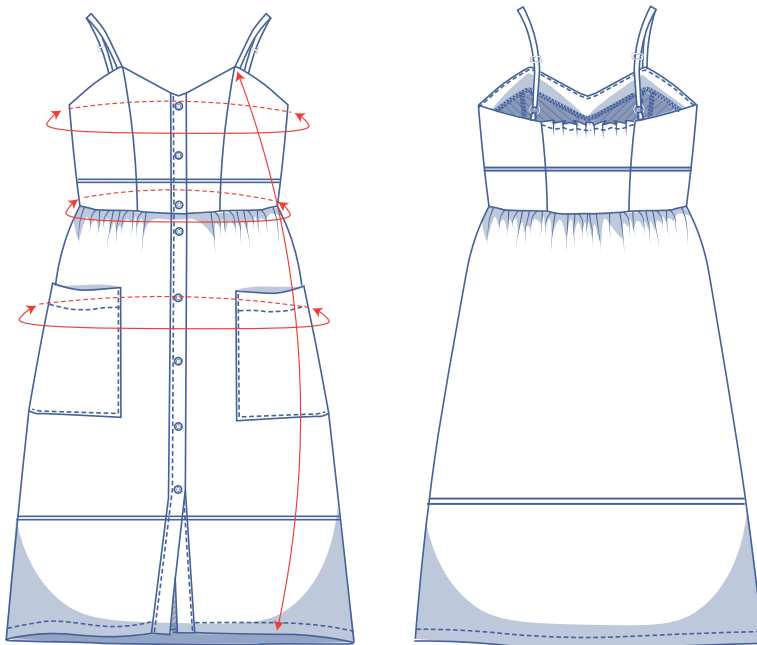
size chart (in inches)

| size | 0 | 2 | 4 | 6 | 8 | 10 | 12 | 14 | 16 | 18 | 20 | 22 | 24 | 26 |
|-------------|-------|-------|-------|-------|-------|-------|-------|-------|-------|-------|-------|-------|-------|-------|
| body height | 5'24" | 5'38" | 5'45" | 5'48" | 5'51" | 5'54" | 5'58" | 5'61" | 5'64" | 5'64" | 5'64" | 5'64" | 5'64" | 5'64" |
| B (bust) | 29.9 | 31.5 | 33.1 | 34.6 | 36.2 | 37.8 | 39.4 | 40.9 | 43.3 | 45.7 | 48 | 50.4 | 52.8 | 55.1 |
| W (waist) | 26 | 26.8 | 27.6 | 29.1 | 30.7 | 32.3 | 33.1 | 34.6 | 37.2 | 39.8 | 42.3 | 44.9 | 47.4 | 50 |
| H (hip) | 33.9 | 35.4 | 37 | 38.2 | 39.4 | 40.6 | 41.7 | 42.9 | 45.3 | 47.2 | 49.2 | 51.2 | 53.1 | 55.1 |

Choose your size based on your bust measurement. Are your waistline or hip measurements bigger than those in the size chart? Check the waist and hip measurements in the chart below to see if there's enough room or whether the pattern needs to be altered. It's easy to do. Simply trace the line of the waist and hip in the size you need and then blend the lines.



finished garment measurements (in inches)



This chart's measurements are the pattern measurements based on the used fabric type and serve as a reference. Ease has been added to the width measurements (on top of the exact body measurements) for a more comfortable fit. Colette is designed to have a more fitted bust and to be looser at the hips. Depending on the preferred cut, you could possibly go a size smaller or larger.

Compare the stated lengths to the measured or desired lengths. **Lengthen** or **shorten** the dress by cutting the pattern pieces along the indicated double lines. Then either increase the distance between the cut pieces by the desired amount (to lengthen) or overlap the pieces (to shorten). Make sure that the CF and CB lines and the side seams are always straight.



— shorten or lengthen the pattern here

| size | 0 | 2 | 4 | 6 | 8 | 10 | 12 | 14 | 16 | 18 | 20 | 22 | 24 | 26 |
|-----------|------|------|------|------|------|------|------|------|------|------|------|------|------|------|
| length* | 37.1 | 37.2 | 37.3 | 37.4 | 37.5 | 37.6 | 38.5 | 38.6 | 40.1 | 40.3 | 40.4 | 40.6 | 40.8 | 41 |
| bust | 30.1 | 31.6 | 33.1 | 34.6 | 36.1 | 37.5 | 39 | 40.5 | 42.7 | 44.9 | 47.2 | 49.4 | 51.6 | 53.8 |
| waistline | 27.7 | 28.5 | 29.2 | 30.8 | 32.4 | 34 | 34.8 | 36.3 | 38.9 | 41.4 | 44 | 46.6 | 49.1 | 51.7 |
| hips | 49.5 | 51 | 52.4 | 55.3 | 58.1 | 61.1 | 62.7 | 65.4 | 70.2 | 74.9 | 79.7 | 84.4 | 89.1 | 93.9 |

* Without shoulder straps.

IMPORTANT

The amount of fabric used may change based on the alterations.

supplies



- Thread
- Iron-on interfacing: max. 2/5 yd
- Bra ring and slider: 2 of each
- Invisible zip: 16"
- Buttons (Ø 5/8"): 9
- Elastic band (width 3/8"): see table
- Fabric: see table

| elastic band | | 0 | 2 | 4 | 6 | 8 | 10 | 12 | 14 | 16 | 18 | 20 | 22 | 24 | 26 |
|--------------|----|------|------|------|------|------|------|------|------|------|------|------|------|------|------|
| length | yd | 0.16 | 0.17 | 0.17 | 0.18 | 0.19 | 0.20 | 0.21 | 0.21 | 0.23 | 0.24 | 0.25 | 0.26 | 0.27 | 0.29 |

| fabric | | 0 | 2 | 4 | 6 | 8 | 10 | 12 | 14 | 16 | 18 | 20 | 22 | 24 | 26 |
|------------------|----|-------|-------|-------|-------|-------|-------|-------|-------|-------|-------|-------|-------|-------|-------|
| fabric width 43" | yd | 2 1/4 | 2 1/4 | 2 1/4 | 2 1/4 | 2 3/4 | 2 3/4 | 2 3/4 | 2 3/4 | 3 | 3 1/4 | 3 1/2 | 3 1/2 | 3 3/4 | 3 3/4 |
| fabric width 55" | yd | 2 1/4 | 2 1/4 | 2 1/4 | 2 1/4 | 2 1/4 | 2 1/4 | 2 1/4 | 2 1/4 | 2 1/4 | 2 3/4 | 2 3/4 | 2 3/4 | 2 3/4 | 2 3/4 |

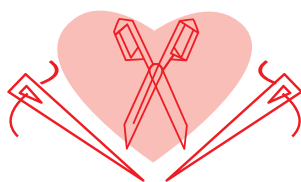
The corresponding fabric layout can be found on page 6 of these sewing instructions.

fabric advice



Personalise Colette with your favourite cotton, denim, linen, viscose (crepe), polyester (crepe) or Tencel.

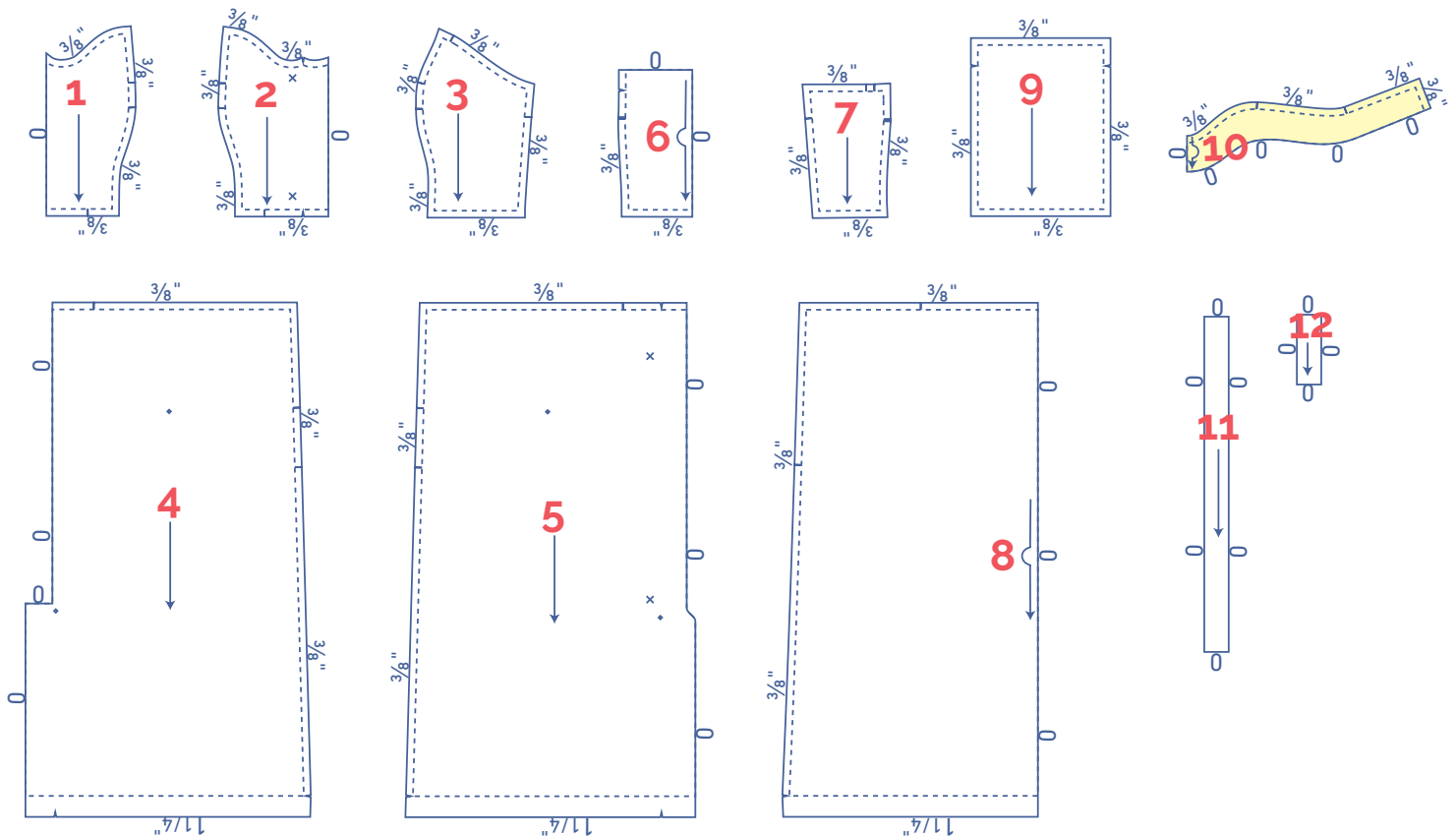
Proud to be #Sewista



pattern pieces & seam allowances (in inches)




To sew the garment as described in the instructions, you must draw the illustrated seam allowances around the paper pattern pieces before cutting them out. If you are using a pdf version of the pattern, you may print it with or without seam allowances. If you print with seam allowances, the solid lines denote the cutting lines, and dashed lines denote the stitch lines. Check out the [video](#).

1. top LFP: 1x
2. top RFP: 1x
3. top front side piece: 2x
4. skirt LFP: 1x
5. skirt RFP: 1x
6. top back piece: 1x on fabric fold
7. top back side piece: 2x
8. skirt back: 1x on fabric fold
9. pocket: 2x
10. facing: 1x on fabric fold
11. shoulder straps A: 2x
12. shoulder straps B: 1x



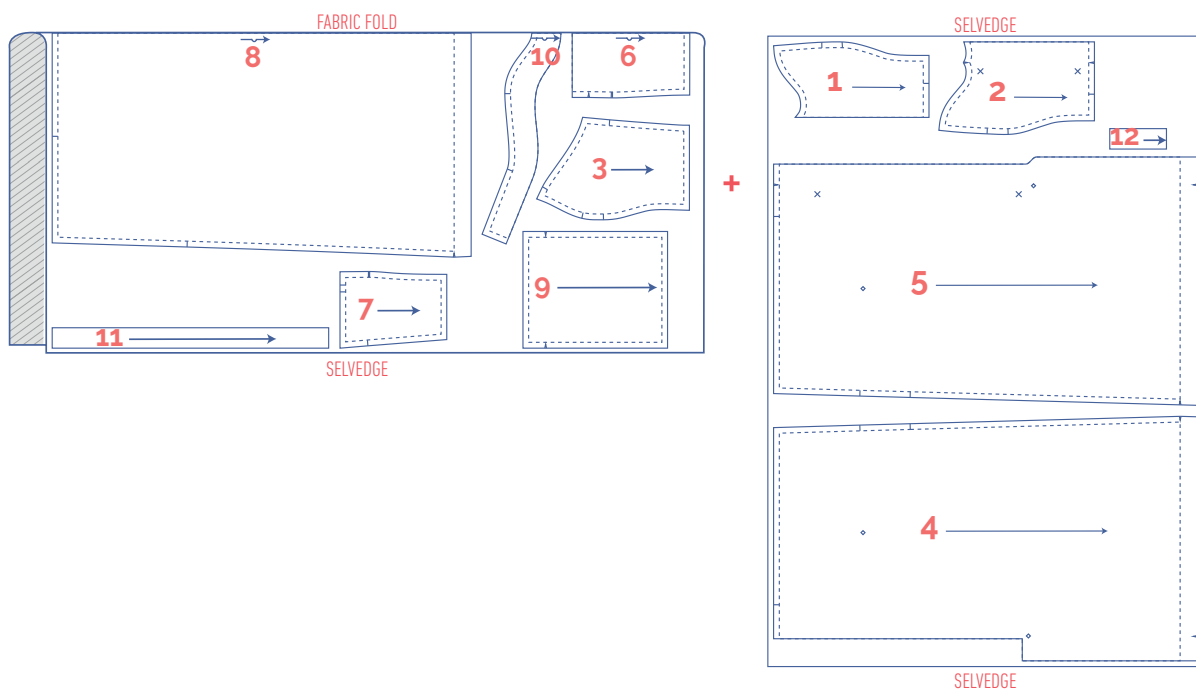
IMPORTANT

The pieces highlighted in light yellow have iron-on interfacing attached to the wrong side.

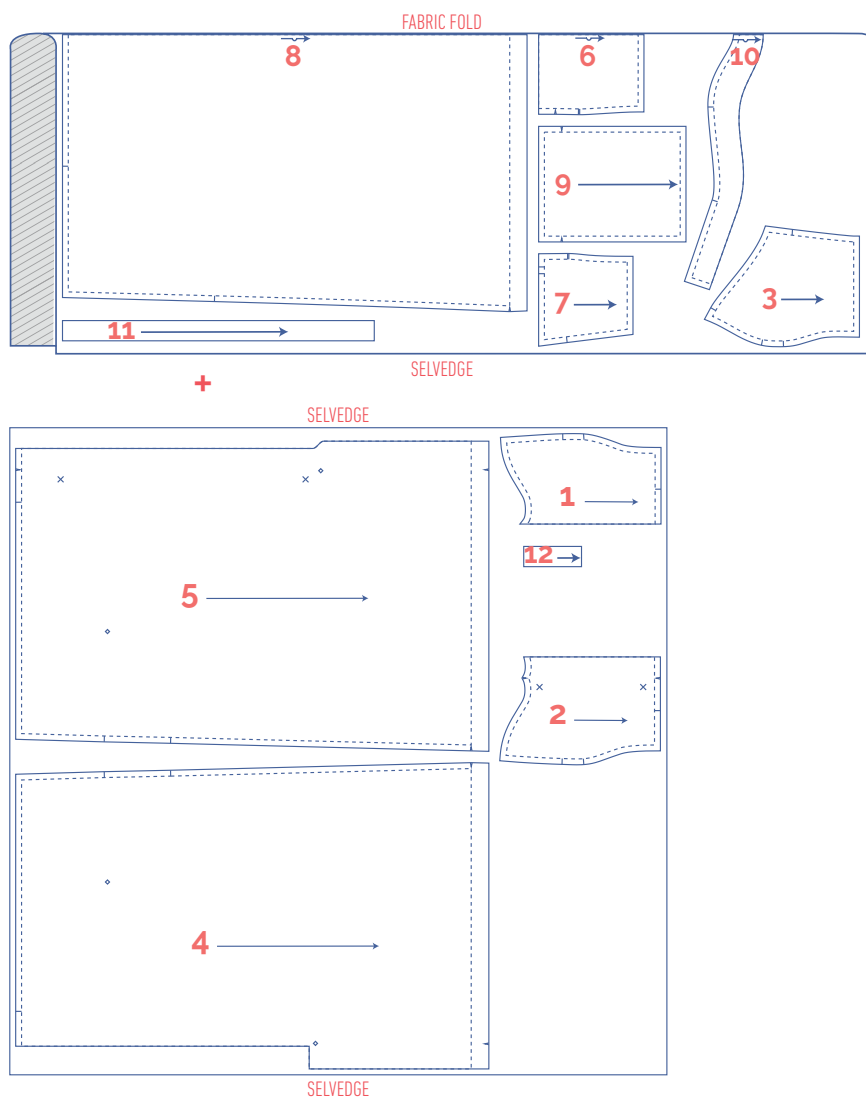
|  material type | |
|---|---------------------|
|  | fabric |
|  | iron-on interfacing |

fabric layout – solid fabrics fabric width 43"

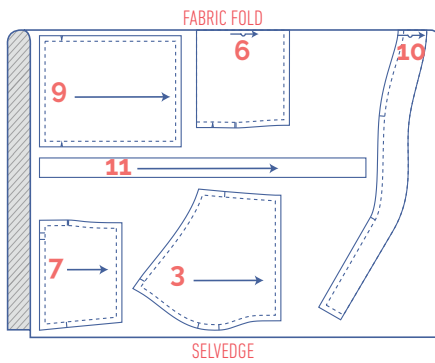
0 - 6



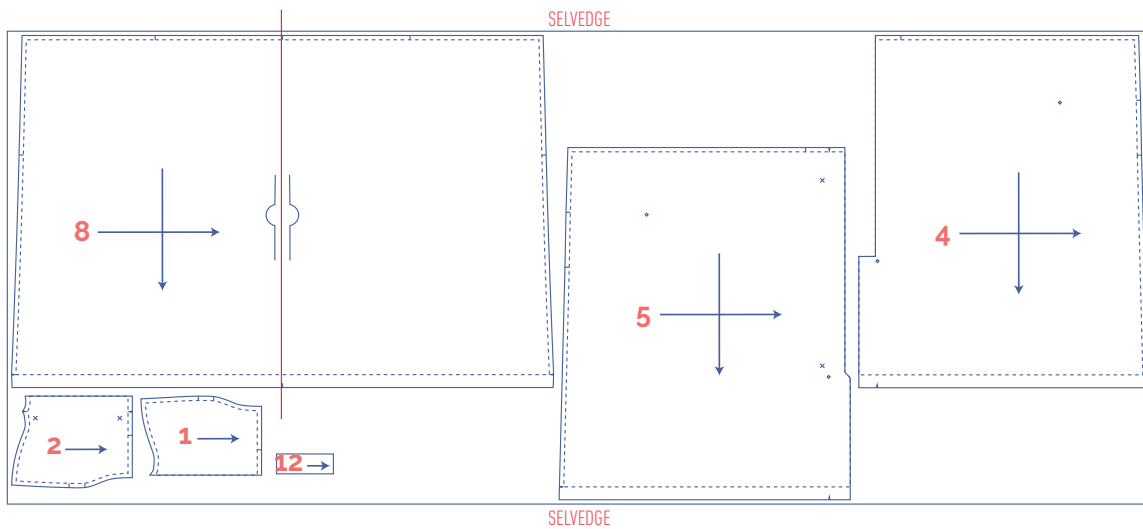
8 - 16



18 - 26

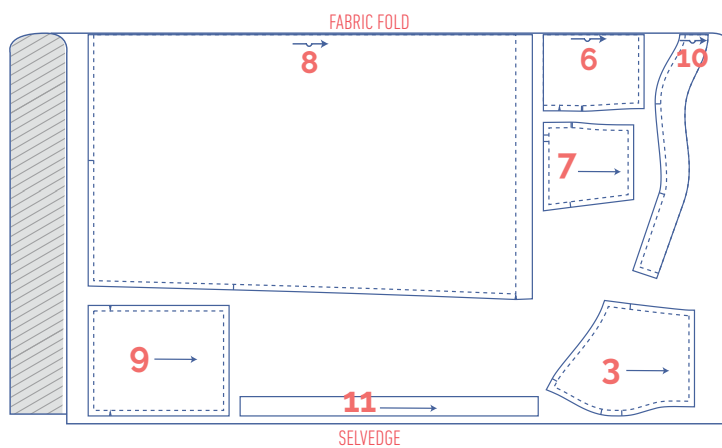


+

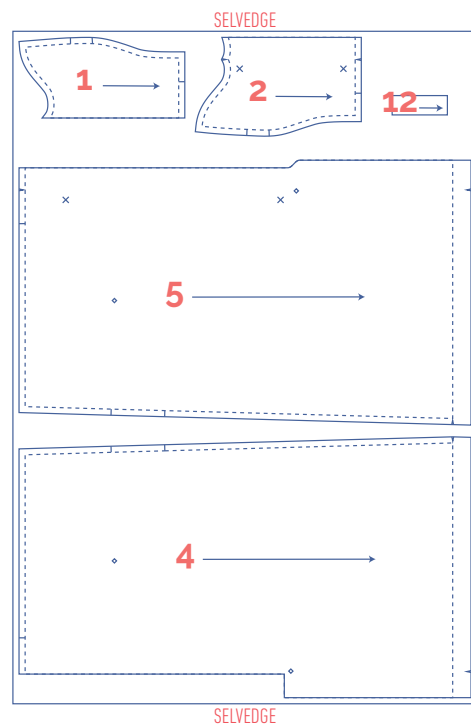


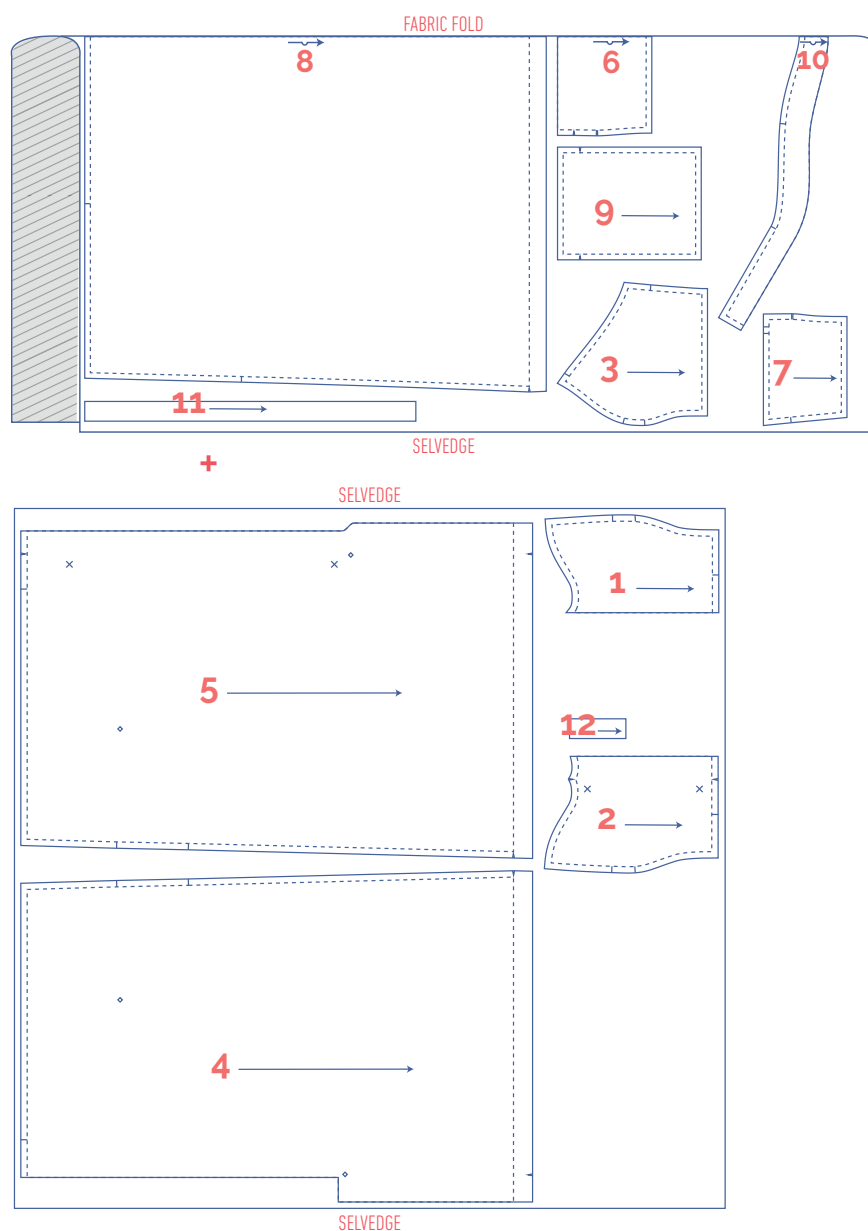
fabric layout – solid fabrics fabric width 55"

0 - 16



+





marking pattern pieces

| | | | |
|---|--|---|--|
| ✂ | notch the pattern paper and fabric at the following points | 🧵 | mark the following points using marking thread |
| | single notch | ⬤ | centre point |
| | double notch | ✕ | button |
| V | V notch | | |

sewing instructions



The method used to finish sewing the garment depends on the fabric used. The pieces are always sewn together with the right sides of the fabric facing together, unless stated otherwise.

F front

B back

SP side piece

RF right front

LF left front

CF centre front



right side



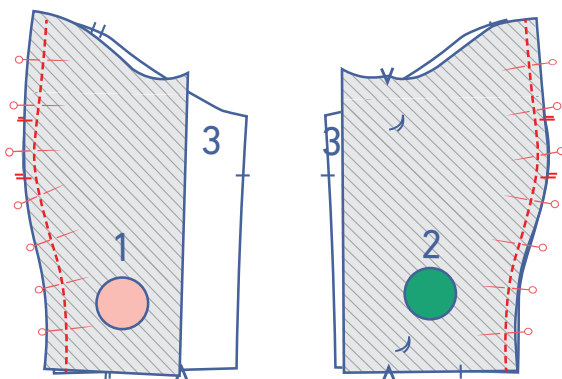
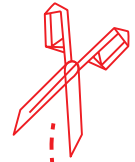
wrong side



iron-on interfacing

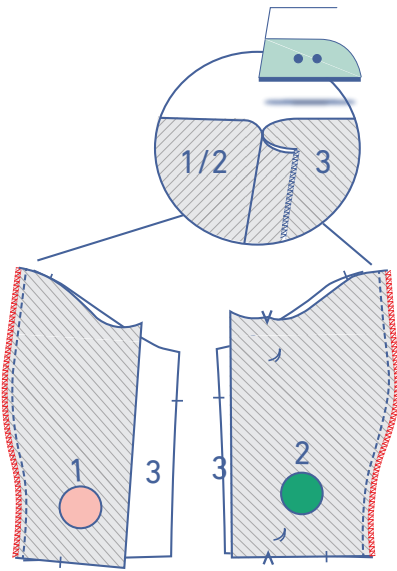


elastic band



1

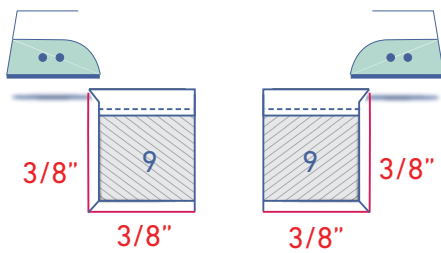
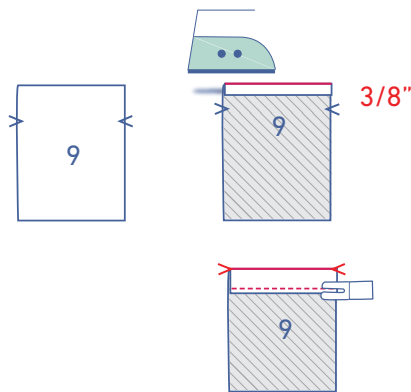
Pin and sew the curved edge of the LF top (1) and the RF top (2) to the respective top front sides (3), making sure that the markings match.



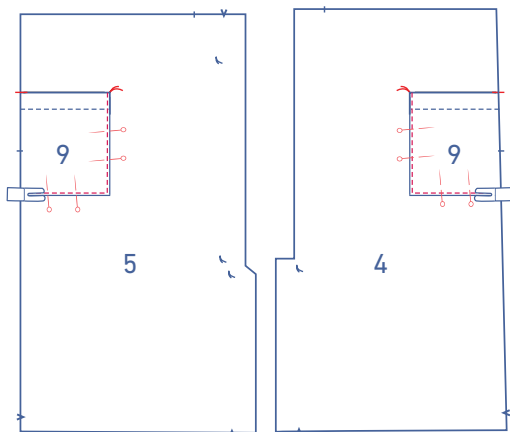
Finish the raw edges together with overlock stitching and press the seam allowance towards the top front side piece.

2

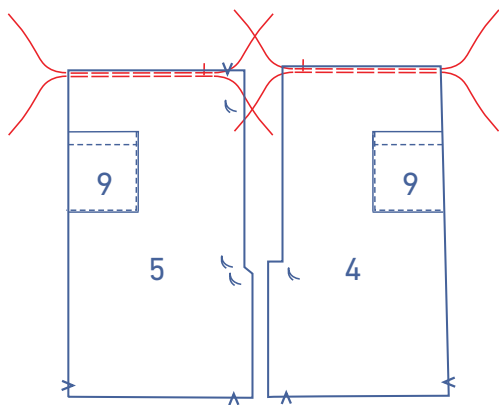
Press the top end of the pocket (9) 3/8" over and press over a second time at the V notches. Sew into place right next to the edge.



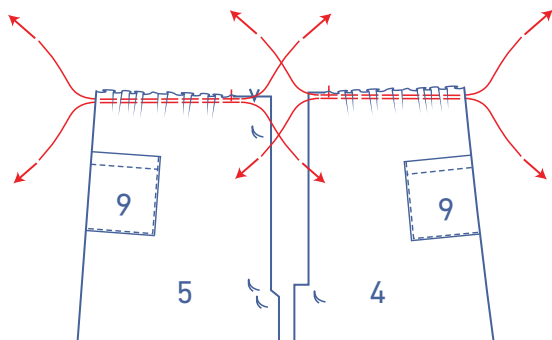
Press 1 long end and the bottoms of each pocket 3/8" onto the wrong side.



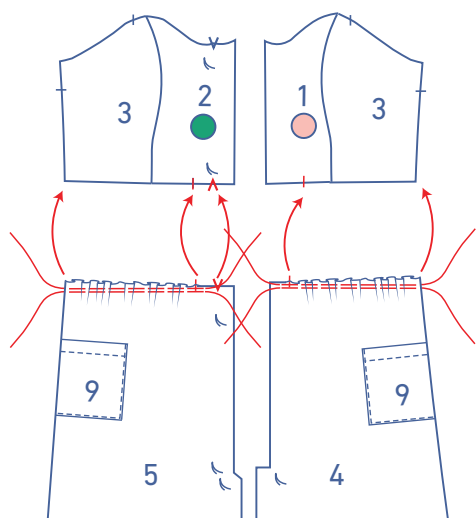
Pin the pocket to the LF skirt (4) and RF skirt (5) pieces with the finished top of the pocket matching the marking thread and the notch on the side seam. Sew the pressed ends into place right next to the edge.



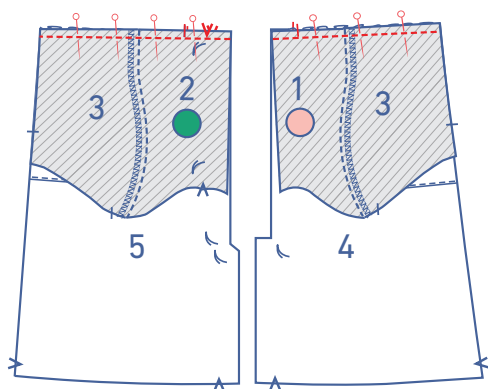
Start sewing 2 parallel rows of stitching from the side seam at the top of the skirt front, using a long stitch length at a low thread tension. Sew just past the single notch on the CF. Leave a length of thread at the start and end of the rows.



Carefully tug the ends of the threads to gather the fabric into ruffles.

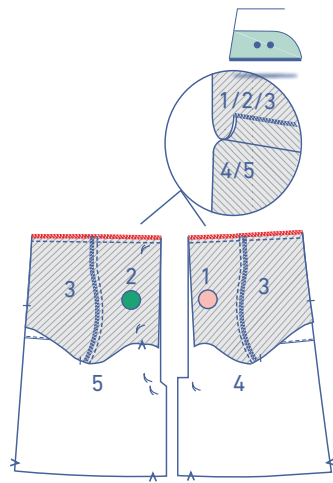


Distribute the gathered fabric (ruffles) so that the skirt notches match the notches on the top.

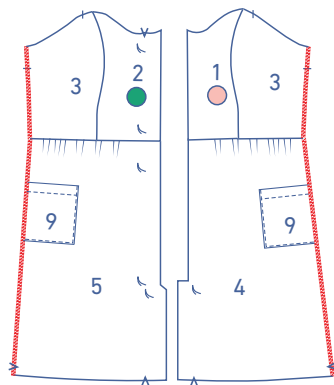


3

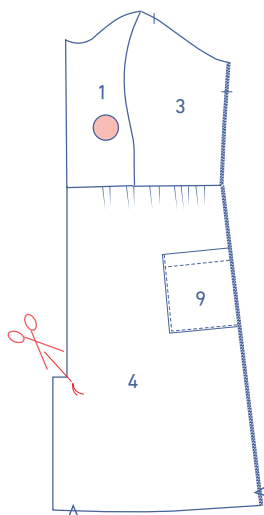
Pin and sew the top front piece to the skirt front, matching the notches. Remove the gathering threads.



Finish the raw edges together with overlock stitching and press the seam allowance towards the top.

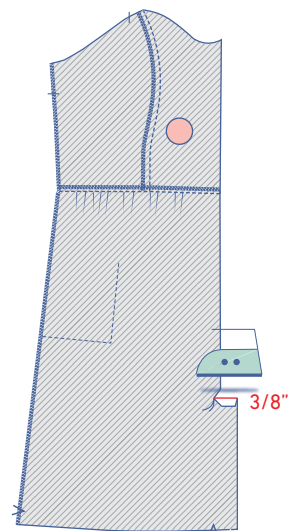


Finish the side seams with overlock stitching.

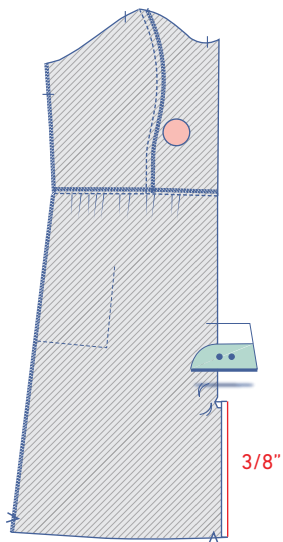


4

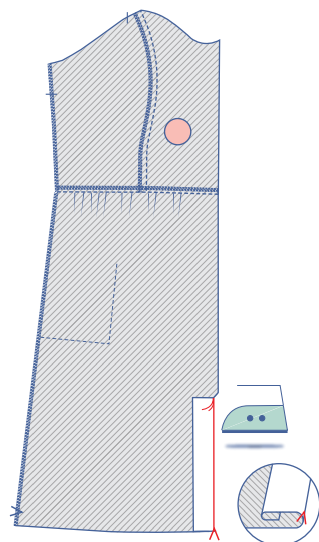
Snip diagonally into the seam allowance of the interfaced side of the LF skirt panel up to the marking thread.



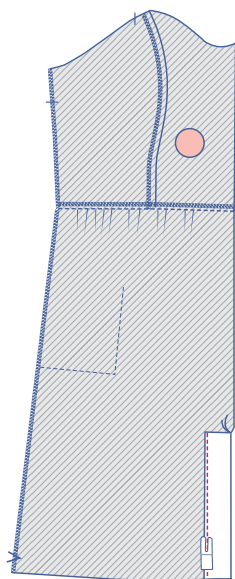
Press the horizontal edge of the interfaced side 3/8" over to the wrong side.



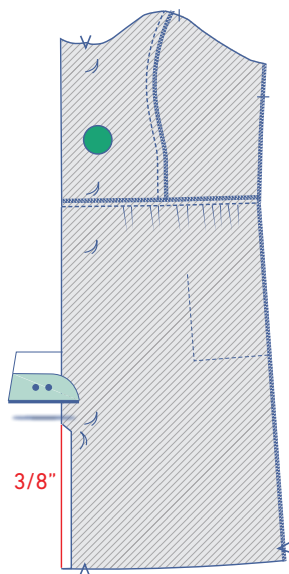
Press 3/8" of the long end of the interfaced side's seam allowance onto the wrong side.



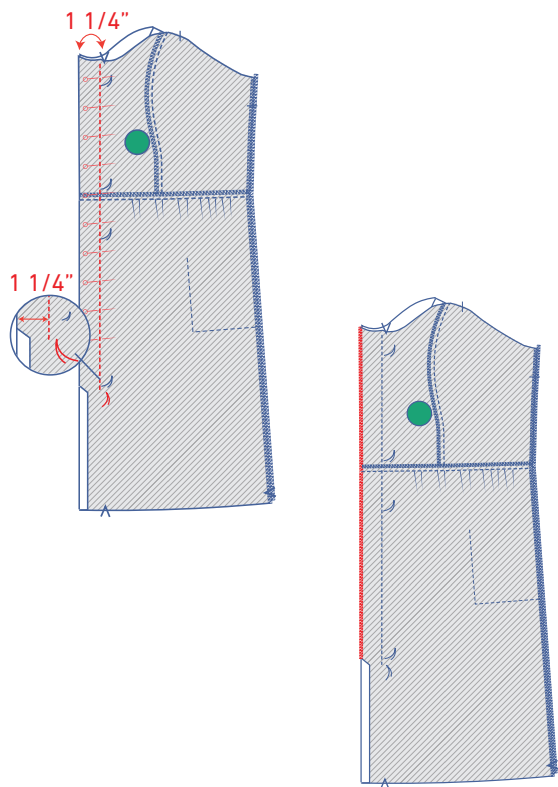
Press a second time, this time from the marking thread at the top and the V notch at the bottom.



Sew the facing into place right next to the edge.



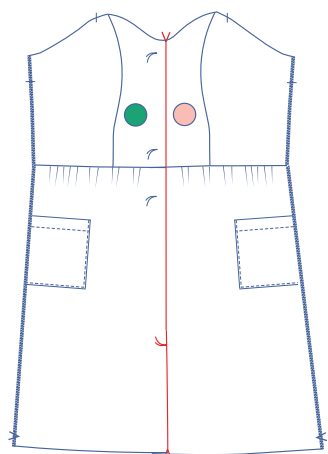
Press the long end of the interfaced side of the RF skirt piece 3/8" onto the wrong side.



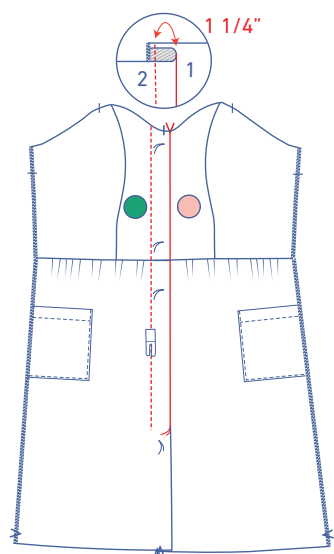
5

Pin and sew the CF seam of the LF and RF together at 1 1/4" from the edge. Sew into place up to the marking thread on the RF.

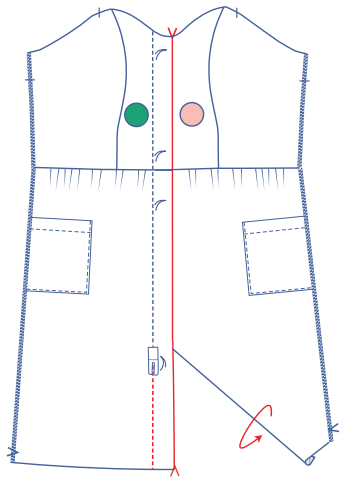
Finish the raw edges together with overlock stitching.



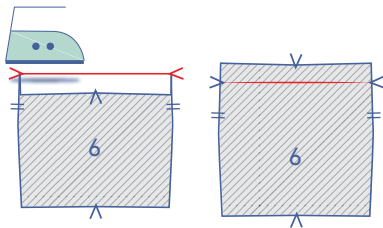
Fold/press the RF over at the V notches.



Sew into place at 1 1/4" from the folded edge up to the indicated marking thread.

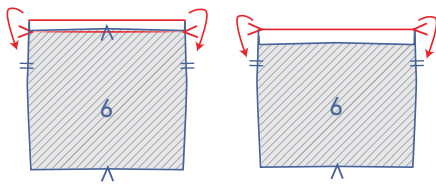


Fold the LF out of the way and sew the interfaced side of the RF (the piece under the marking thread) into place at 1.1/4" from the folded edge.

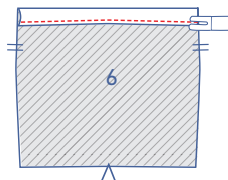


6

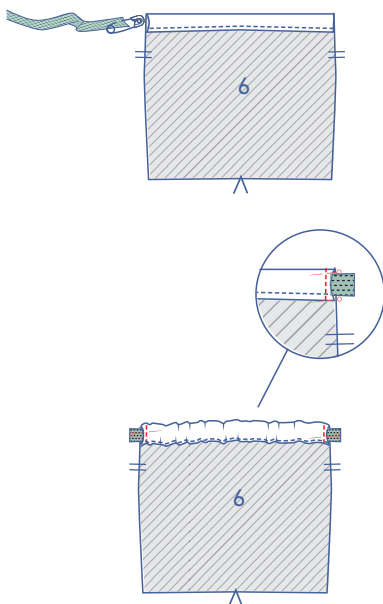
Press the top of the top back centre piece (6) over at the V notches and open back out.



Place the raw edge against the pressed fold line and fold back down again.



Sew into place right next to the edge.

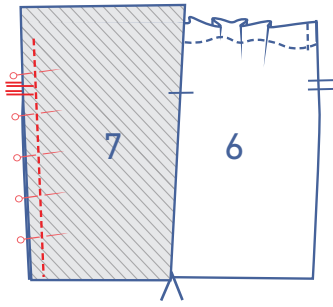


Thread the elastic through the openings in the casing.

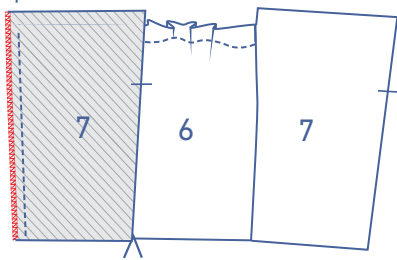
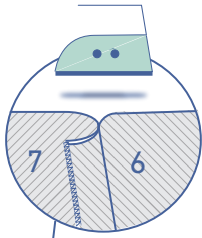
IMPORTANT

The length specified for the elastic band is merely indicative.

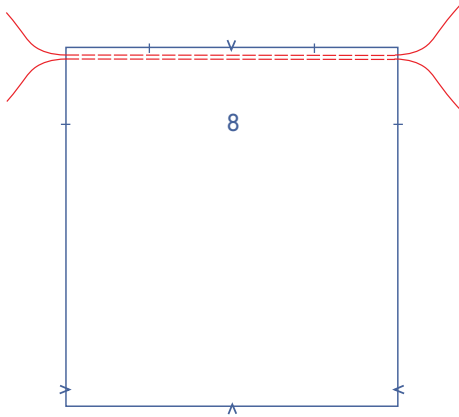
Pin and sew the elastic into place on both sides by sewing into the seam allowance of the casing's ends.



Pin and sew the top back side piece (7) and the top back centre piece (6) together, making sure the markings match. At the top of the top back side piece, there should be 3/8" of seam allowance left.

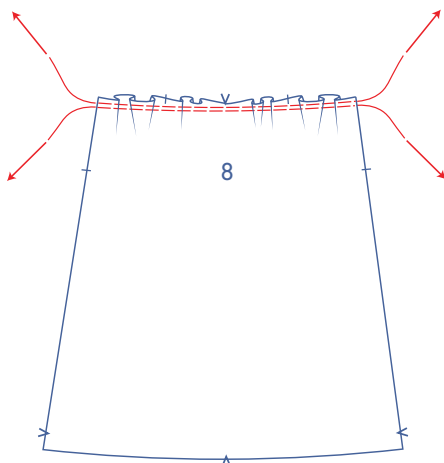


Finish the raw edges together with overlock stitching and press the seam allowance towards the top back side piece.

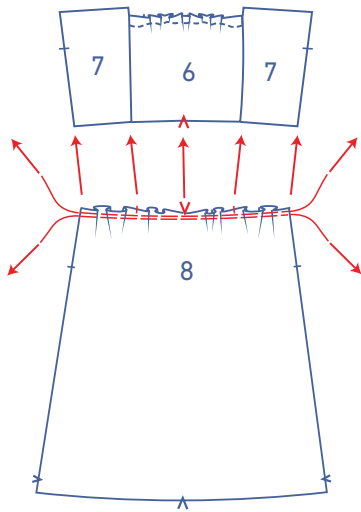


7

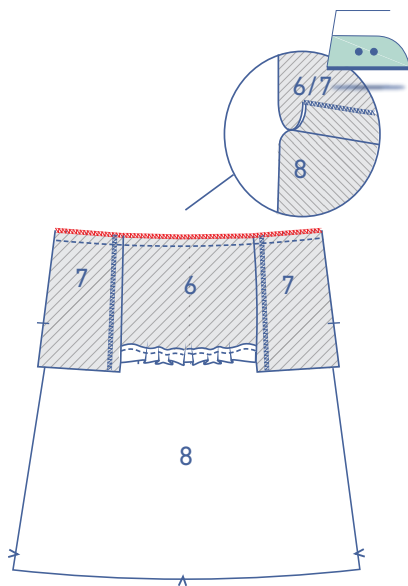
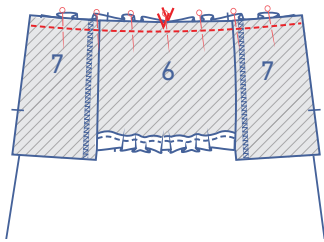
Sew 2 parallel rows of stitching at the top of the skirt back (8) using a long stitch at a low thread tension. Sew from one side seam to the other. Leave a length of thread at the start and end of the rows.



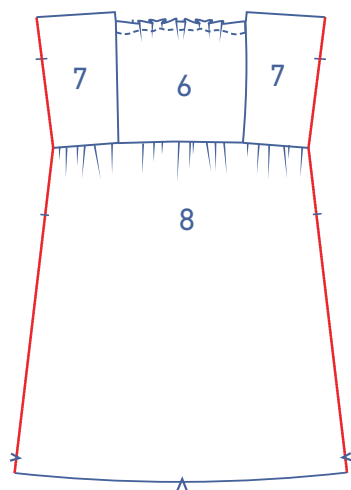
Carefully tug the ends of the threads to gather the fabric into ruffles. Distribute the gathered fabric so that the skirt notches match the notches on the top.



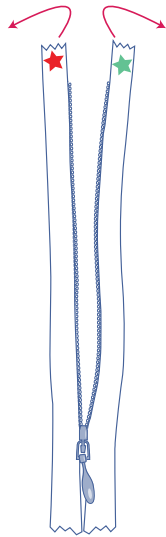
Pin and sew the top back piece to the skirt back, matching the notches. Next, remove the gathering threads.



Finish the raw edges together with overlock stitching and press the seam allowance towards the top.

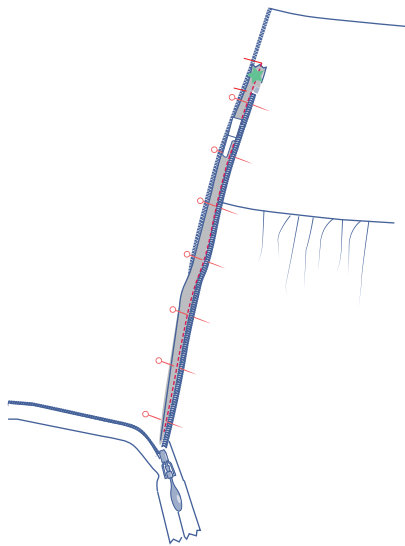


Finish the side seams of the back with overlock stitching.

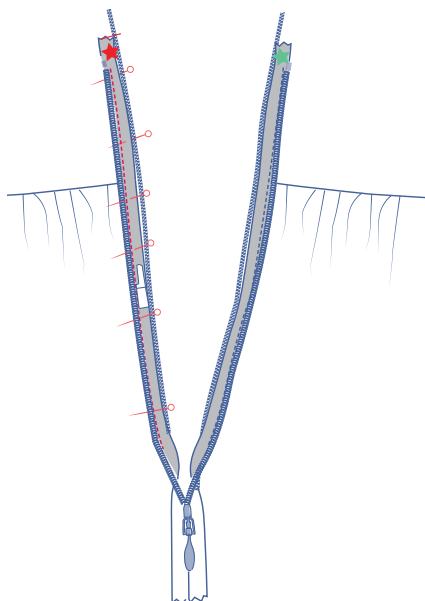


8

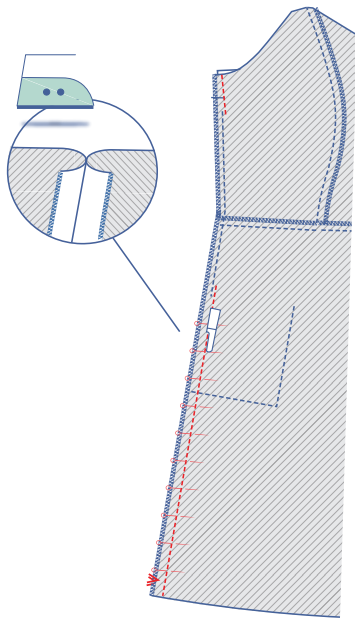
Place the invisible zip in front of you with the right side facing up. Open the zip.



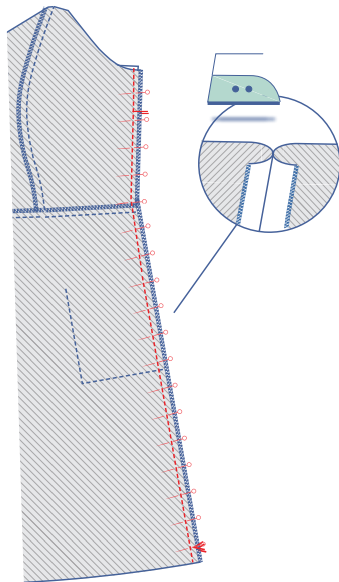
Now fold the zip tape marked with the green star to the right and pin it to the left side seam of the back. The zip tape should match the edge of the fabric and the top end of the zip tape should be even with the single notch. Sew into place with the invisible zipper foot.



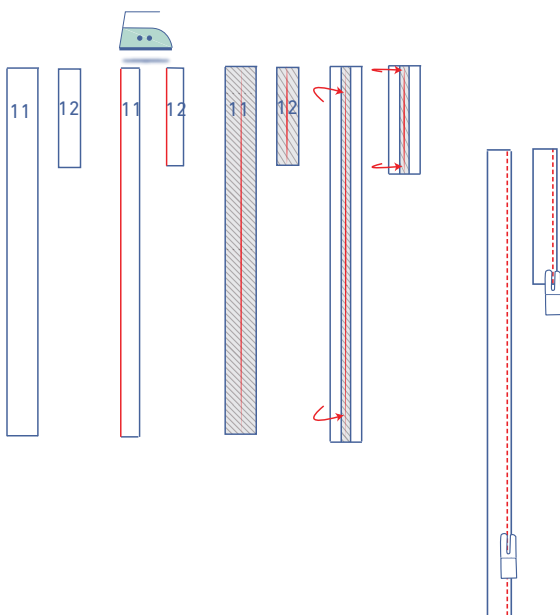
Now fold the zip tape marked with the red star to the left and pin it to the right side seam of the front. The zip tape should line up with the edge of the fabric. The top end of the zip tape should be even with the single notch. Sew into place with the invisible zipper foot.



Close the zip and sew the rest of the side seam at the top and bottom of the zip using the narrow zipper foot or zipper foot. Start sewing a little above and just next to your previous row of stitching (to sew the zip tape). Press the seam allowance open.



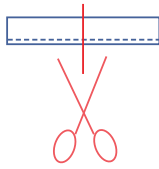
Pin and sew the right side seam and press the seam allowance open.



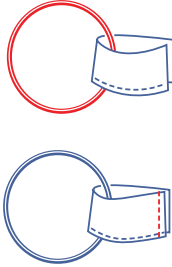
9

Press each of the pieces for shoulder strap A (11) and shoulder strap B (12) in half lengthwise with the wrong sides touching. Open back out and press the long ends to the fold line and press in half again.

Sew into place right next to the edge.

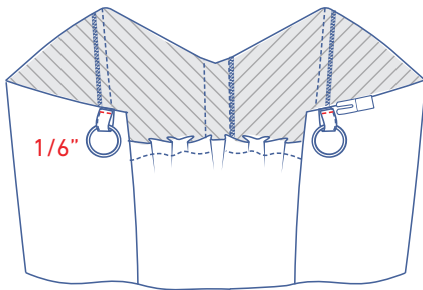


Cut shoulder strap B down the middle, into two equal parts.

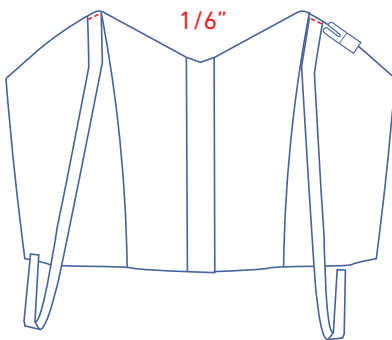


10

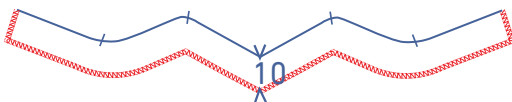
Thread each of the short shoulder straps through a ring and make a loop. Sew the ends together.



Sew the raw edges of the loops to the top of the top back piece between the notches at $\frac{1}{6}$ " from the raw edge.

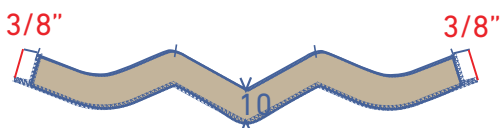


Sew the raw edges of 1 end of shoulder strap A to the top of the top front next to the notch at $\frac{1}{6}$ " from the raw edge.

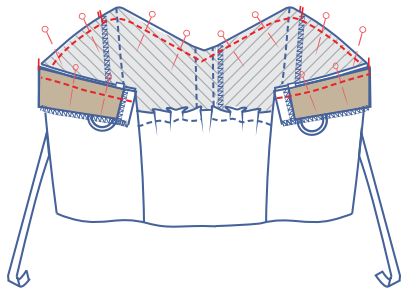


11

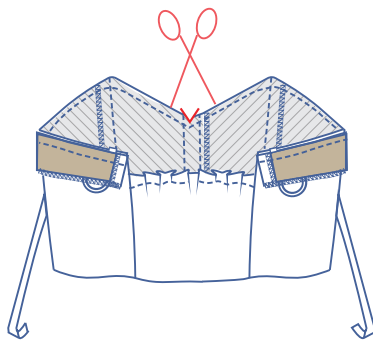
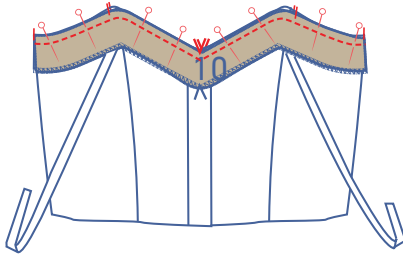
Finish the bottom and sides of the facing (10) with overlock stitching.



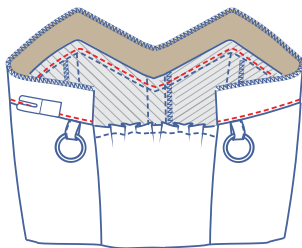
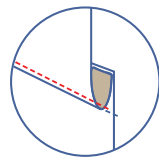
Press the short ends of the facing $\frac{3}{8}$ " onto the wrong side.



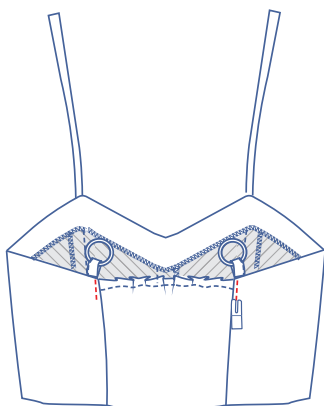
Pin and sew the facing to the top, matching the notches. The outermost single notches on the facing should match the side seams.



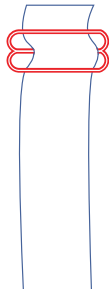
Snip into the seam allowance to create a nice curve.



Fold the facing and the seam allowance up and sew the facing into place right next to the seam through all the layers of fabric (facing + underlying seam allowance).

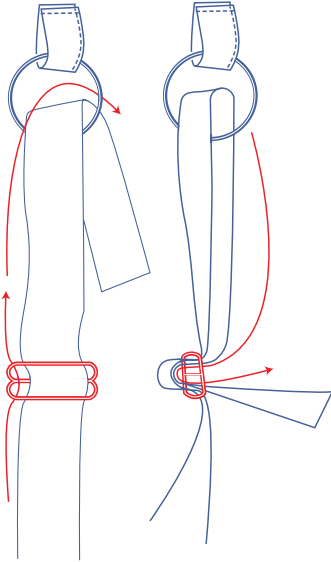


Sew the seam allowance of the edges of the facing to the seam allowance of the decorative seams on the back panel with just a few stitches. Sew the rest of the facing to the seam allowances of the side and the decorative seams on the front panel.

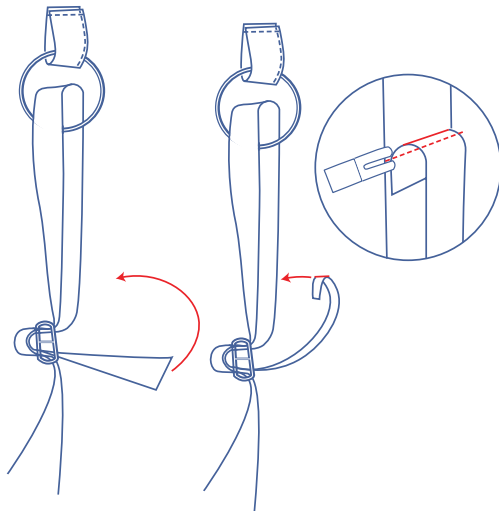


12

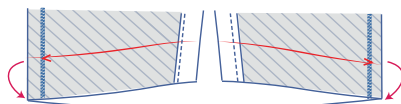
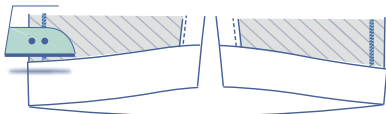
Thread the end of the long shoulder strap through the slider, entering through the bottom and exiting through the upper part of the slider.



Thread the end over and through the ring. Draw down and thread it through the back of the slider.

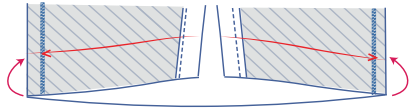


Fold the raw edge over and sew into place.

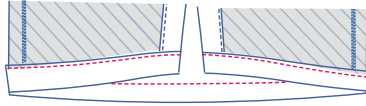
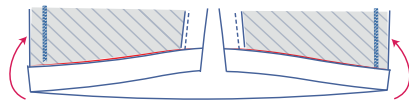


13

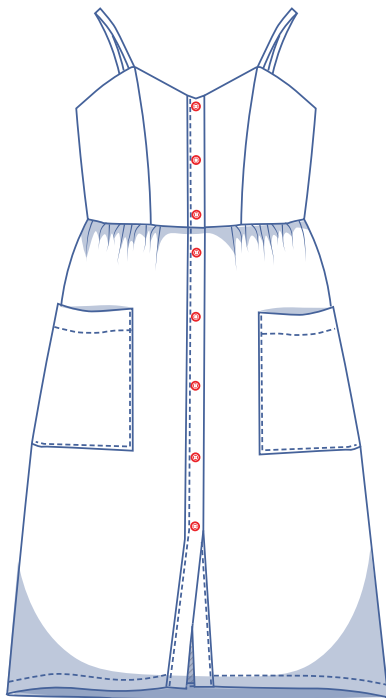
Press the hem allowance up at the V notches and then open back out.



Match the raw edge to the pressed fold line and fold again.



Sew into place next to the edge.



14

Sew the buttons on where indicated. The top and bottom button are marked on the pattern. Divide the distance equally to determine the position of the other buttons.