

Mindy by Fibre ⚡ood



Mindy by Fibre Mood

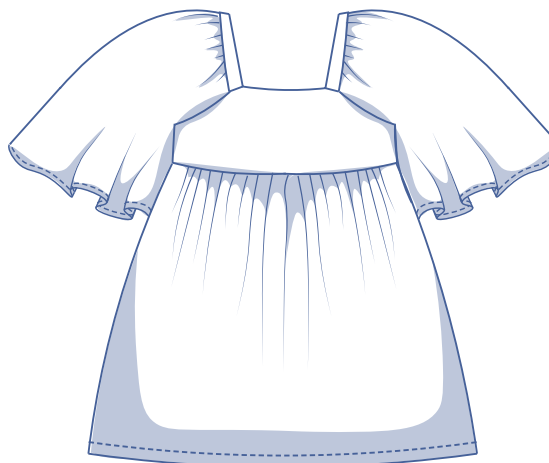
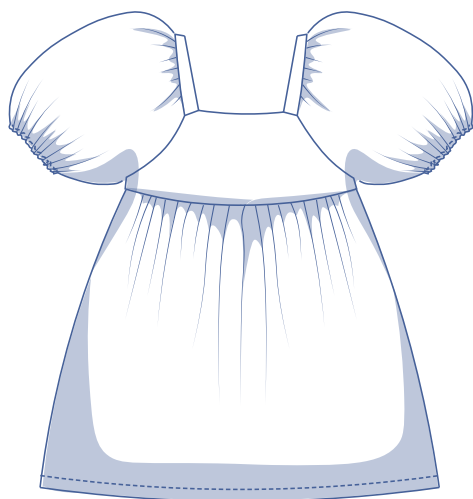
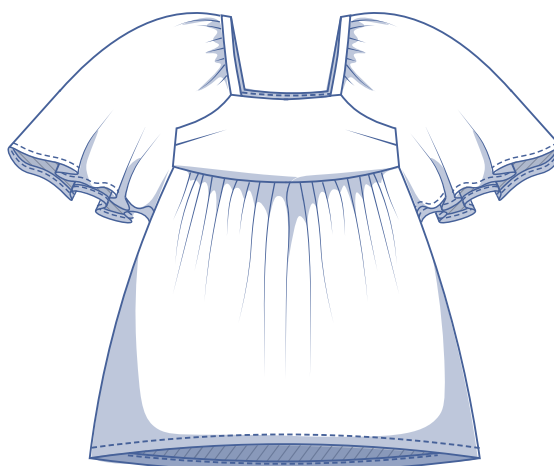
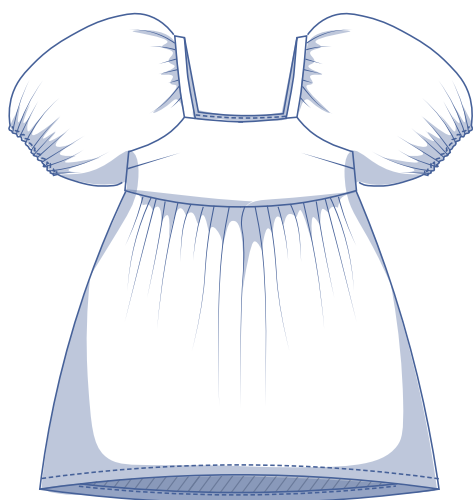


4 - 30

There's statement sleeves and there's the statement sleeves.

Mindy definitely falls in the latter category. This Balkan inspired dress with a gorgeous square neckline (another super trend!) is destined to be a hit! Love the big sleeves, but not wild about the puffy effect? Leave out the elastic in the sleeve hem and you've got yourself a pair of fluttery butterfly sleeves. Mindy is neatly fitted at the bust, with an A-line skirt that slightly flares. Want to wear this pattern as a pretty tunic or blouse? Find out how to make it happen in 1, 2, 3 here:

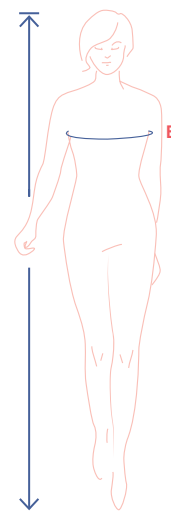
www.fibremood.com



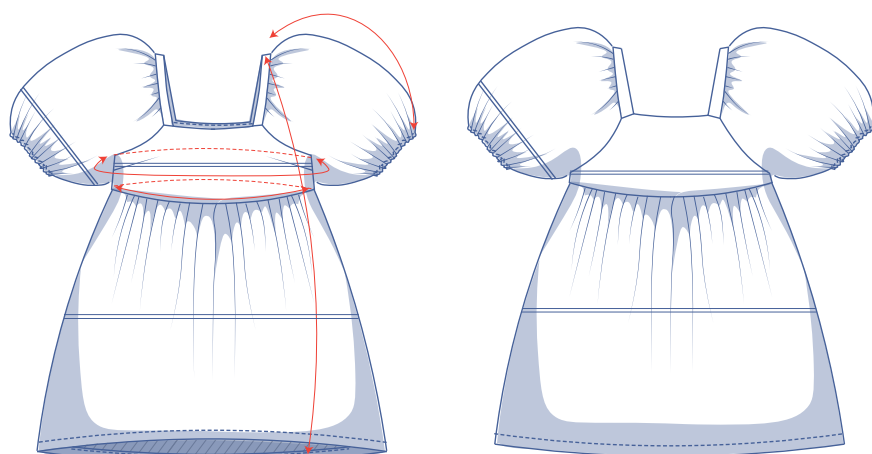
size chart (in cm)

size	4	6	8	10	12	14	16	18	20	22	24	26	28	30
body height	160	164	166	167	168	169	170	171	172	172	172	172	172	172
B (bust)	76	80	84	88	92	96	100	104	110	116	122	128	134	140

Choose your size based on your bust measurement. Pick the size closest to your bust measurement.



pattern measurements (in cm)



These are the pattern measurements based on the used fabric type and serve as a reference. Ease has been added to the width measurements (on top of the exact body measurements) for a more comfortable fit. Mindy is designed to have a more fitted bust and to be looser around the midriff and at the hips. If needed, make the pattern a size bigger or smaller depending on the desired cut.

— shorten or lengthen the pattern here

size	4	6	8	10	12	14	16	18	20	22	24	26	28	30
length	88.5	89	89.5	90	90.75	91.25	93.75	94.25	98	99	99.75	100.5	101.25	102
sleeve length*	40.5	40.75	41	41.5	41.75	42	42.25	42.5	43	43.25	43.5	43.75	44	44.5
bust	77	80.75	84.5	88.25	92	95.75	99.5	103.25	110	115.5	121	126.5	131.75	137.25
bottom circumference of top piece front + back**	73.25	77.25	81.25	85.25	89.5	93.5	97.5	101.5	107.5	113.5	119.5	125.75	131.75	137.75

* Including shoulder length.

** This is the measurement just under the bustline.

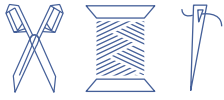
Compare the stated lengths to the measured or desired lengths. Lengthen or shorten the dress and/or the sleeves by cutting the pattern pieces at the indicated double lines. Then either increase the distance between the cut pieces by the desired amount (to lengthen) or overlap the pieces (to shorten). Make sure that the CF and CB lines and the side seams are always straight.



IMPORTANT

The amount of fabric used may change based on these alterations.

supplies



- Thread
- Iron-on interfacing: max. 20 cm
- Invisible zip: 20 cm
- Elastic band (width 0.5 cm): see table
- Fabric: see table

elastic band		4	6	8	10	12	14	16	18	20	22	24	26	28	30
sleeve length (elasticised hem) (2x)	cm	30.5	31	31.5	32	32.5	33.25	33.75	34.5	36	37	38	39	40	41
total elastic	cm	61	62	63	64	65	66.5	67.5	69	72	74	76	78	80	82

fabric		4	6	8	10	12	14	16	18	20	22	24	26	28	30
fabric width 110 cm	cm	230	235	235	240	245	245	280	280	290	290	295	295	295	295
fabric width 140 cm	cm	175	175	175	175	175	175	210	210	240	240	245	275	285	290

The corresponding fabric layout can be found on page 6 of these sewing instructions.

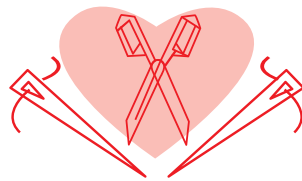
fabric advice



Mindy should be made in a fabric with a bit of body, for example, cotton, jacquard weave, brocade, broderie anglaise, etc. Solids, prints and subtle textures all work. Want to bring out the ultra romantic side of this dress? Make it in white!

Are you more of a butterfly sleeve girl than a puffed sleeve girl? Then go for a fabric with a fluid drape.

Proud to be #Sewista



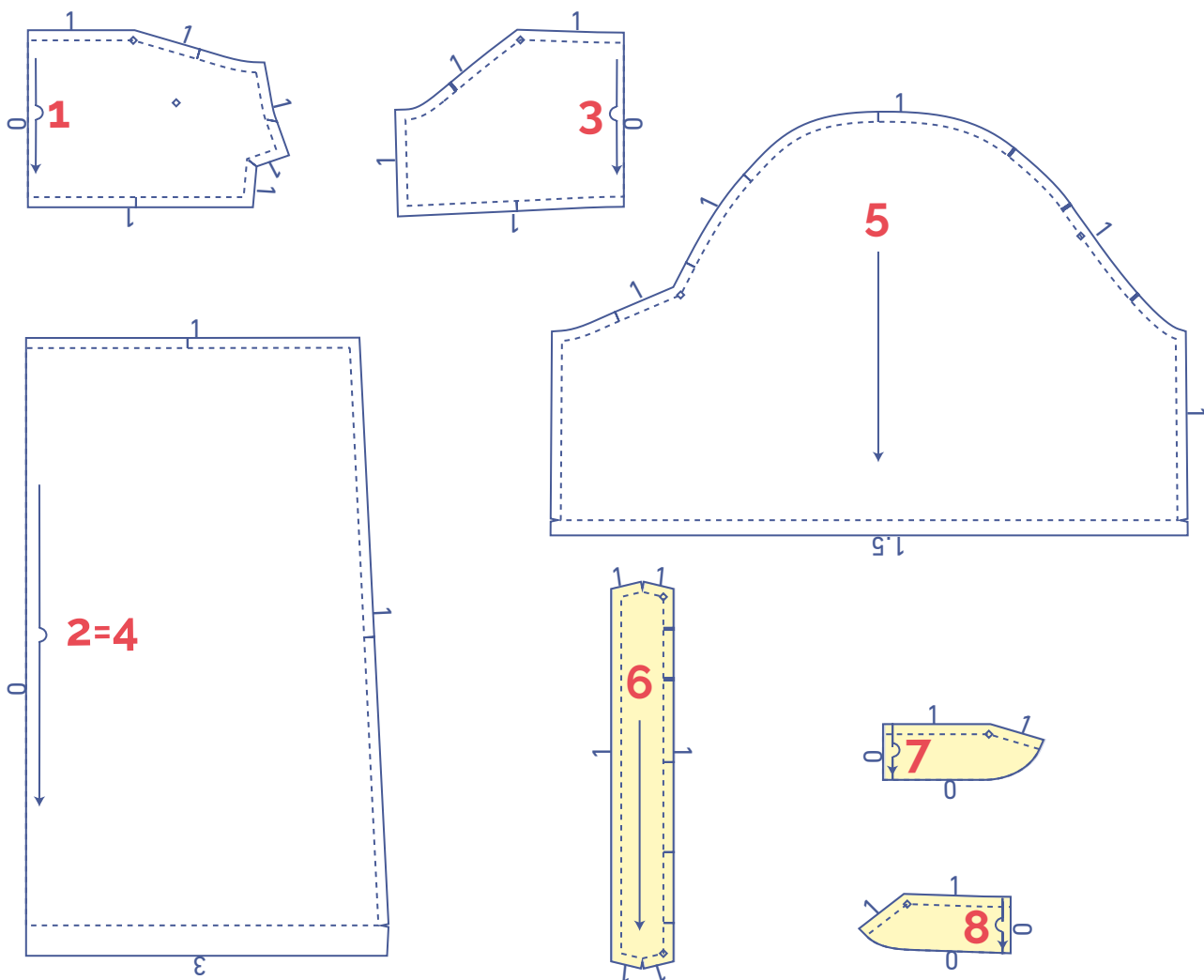
pattern pieces & seam allowances (in cm)

To sew the garment as described in the instructions, you must draw the illustrated seam allowances around the paper pattern pieces before cutting them out. If you are using a pdf version of the pattern, you may print it with or without seam allowances. If you print with seam allowances, the solid lines denote the cutting lines, and dashed lines denote the stitch lines. Check out the [video](#).

- | | |
|-----------------------------------|------------------------------------|
| 1. front: 1x on fabric fold | 5. sleeve: 2x |
| 2. skirt front: 1x on fabric fold | 6. neck trim: 2x |
| 3. back: 1x on fabric fold | 7. facing front: 1x on fabric fold |
| 4. skirt back: 1x on fabric fold | 8. facing back: 1x on fabric fold |

IMPORTANT

Pattern pieces 2 and 4 are the same pattern pieces.



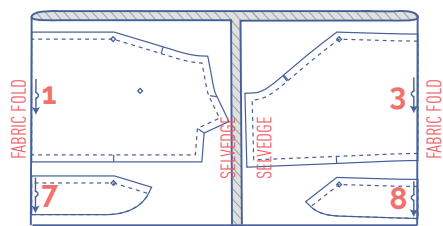
IMPORTANT

The pieces highlighted in light yellow have iron-on interfacing attached to the wrong side.

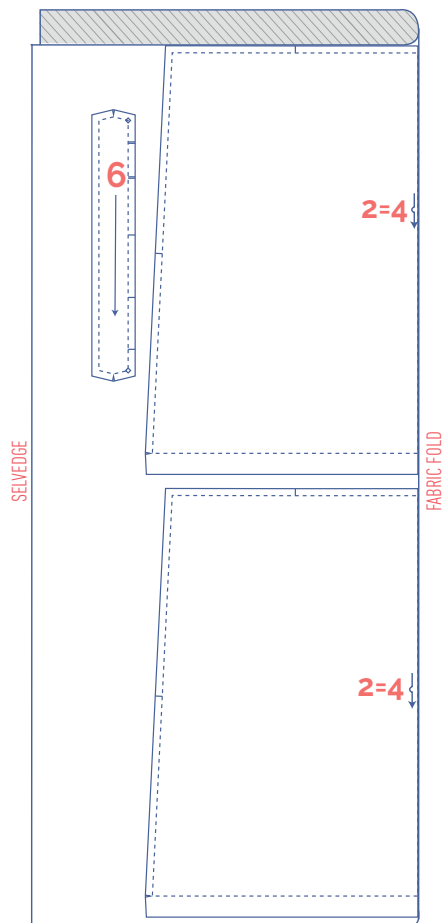
?	material type
	fabric
	iron-on interfacing

fabric layout – solid fabrics
fabric width 110 cm

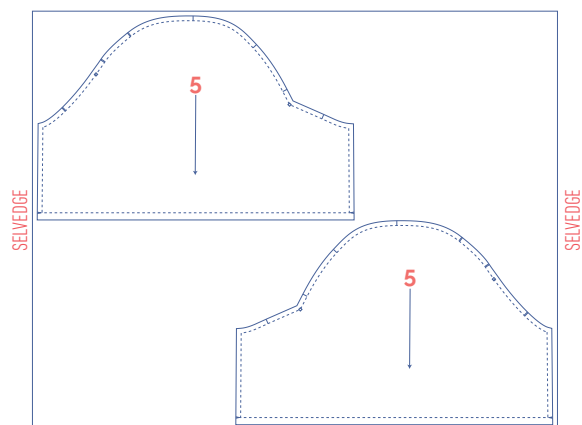
4 - 14



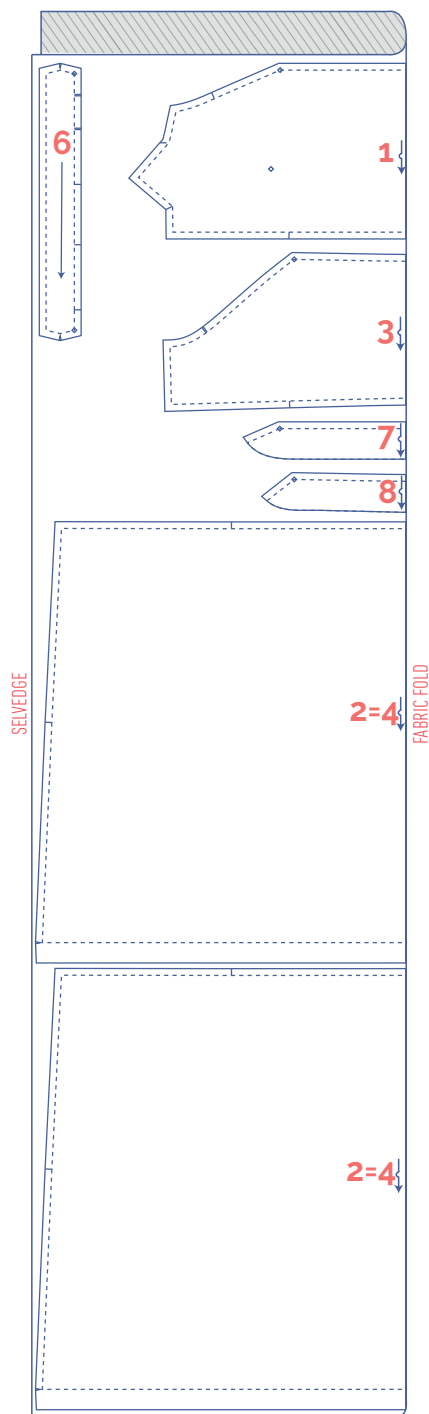
+



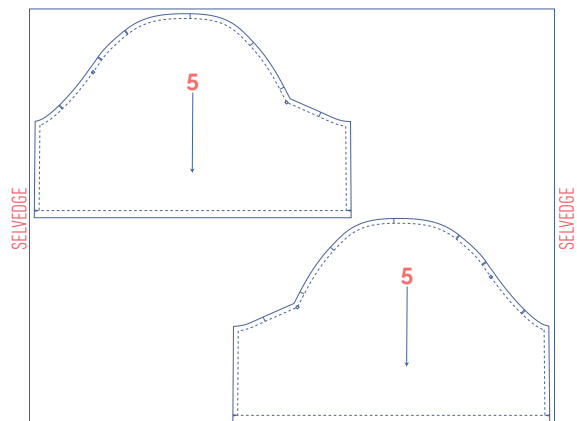
+



16 - 30

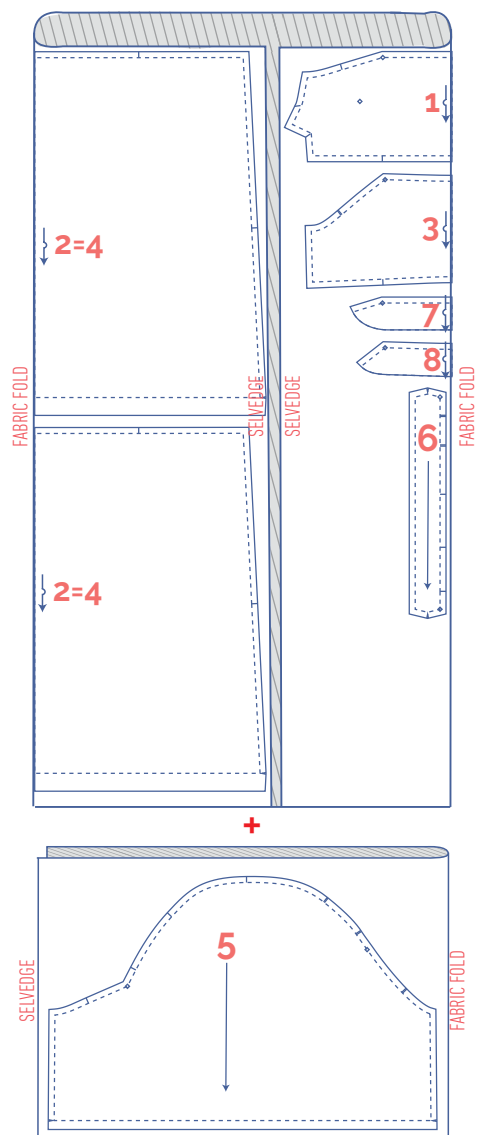


+

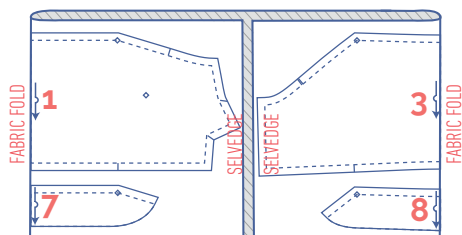


fabric layout – solid fabrics fabric width 140 cm

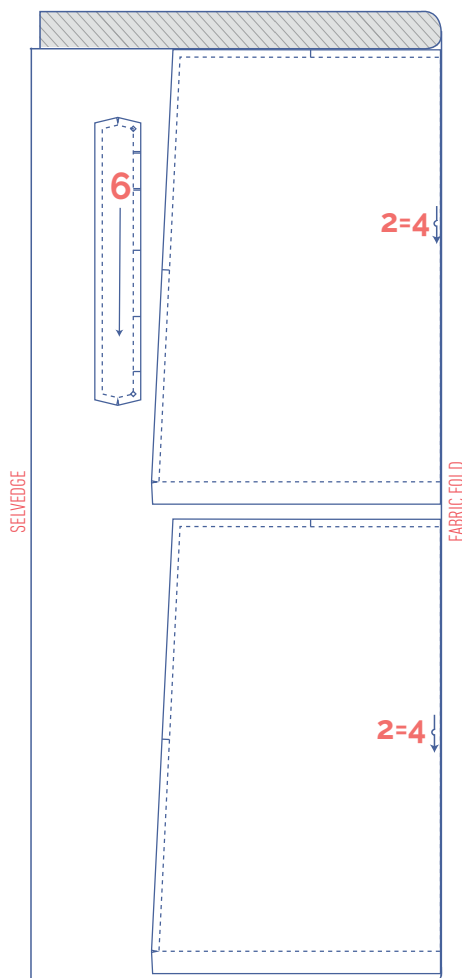
4 - 14



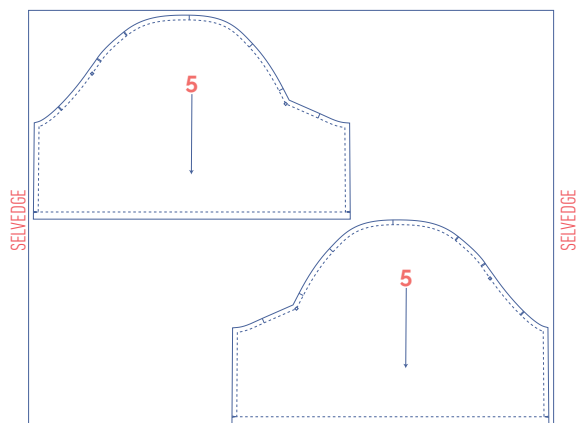
16 - 24

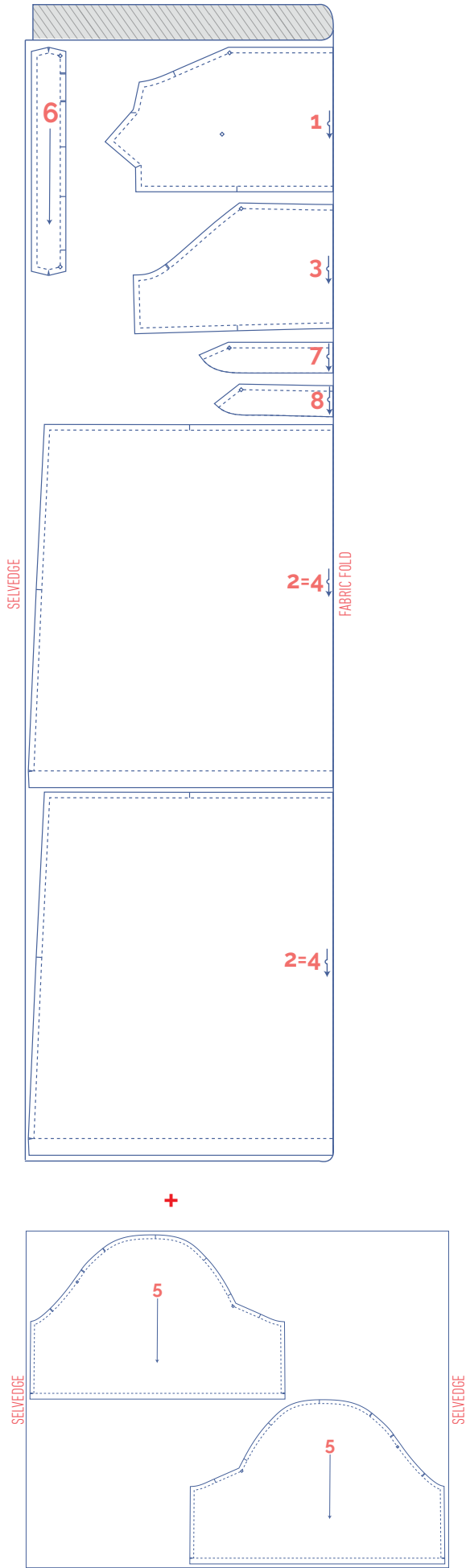


+






+





marking pattern pieces

	Notch the pattern paper and fabric at the following points
	single notch
	double notch
V	V notch
	Mark the following points using marking thread
	centre point

sewing instructions



The method used to finish the seams depends on the fabric used.
The pieces are always sewn together with the right sides of the fabric facing together, unless stated otherwise.



F front

B back

CF centre front

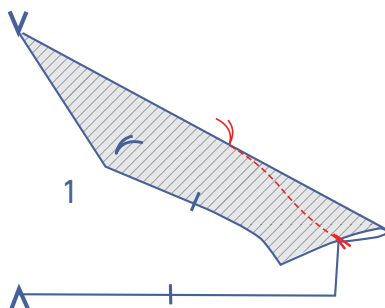
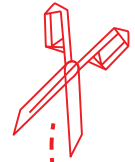
CB centre back



iron-on interfacing

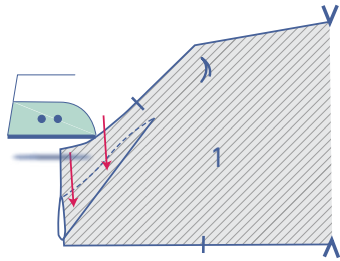


elastic band

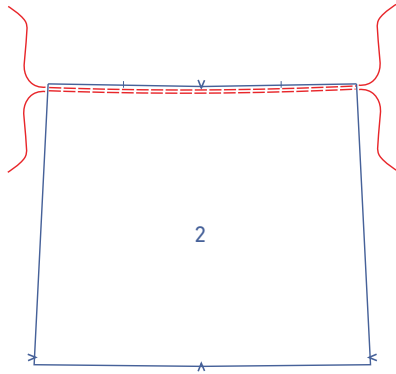


1

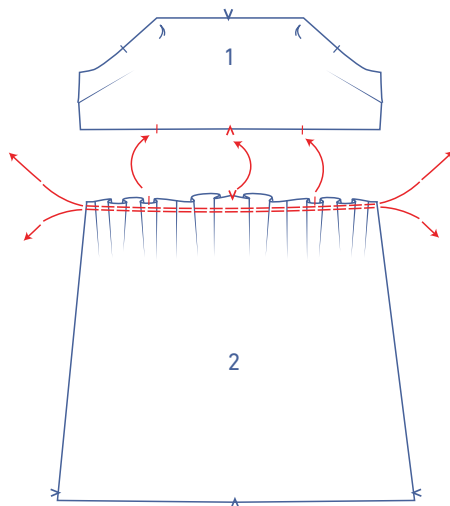
Match the notches on the side seam of the front (1) together with the right sides of the fabric facing. Sew the dart in a slightly curved line towards the marking thread. Stitch up to and just past the marking thread, so that you've sewn off the fabric. Snip the threads and make a knot.



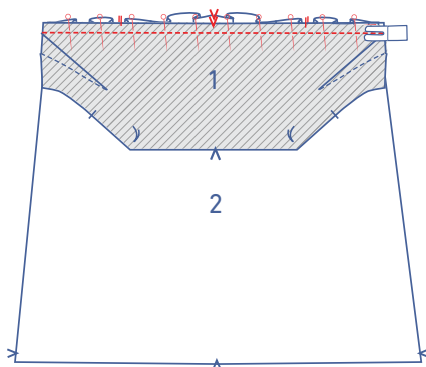
Turn the front over so that the wrong side is facing up. Press the dart downwards.



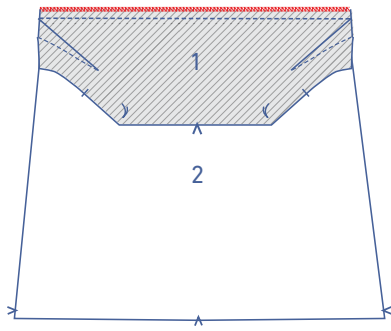
Sew 2 parallel rows of stitching at the top of the skirt front (2), using a long stitch at a low thread tension. Leave the thread tails long at the start and end of the stitching.



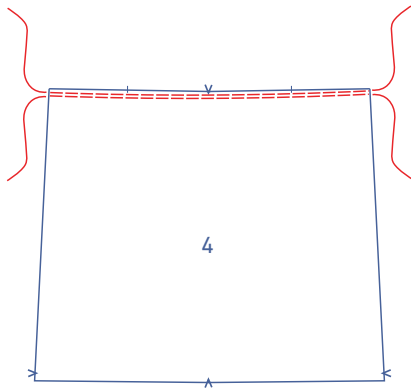
Carefully tug the ends of the threads to gather the fabric into ruffles.



Pin the bottom of the front (1) to the skirt top of the skirt (2), right sides together. Distribute the ruffles until the notches are matching. Sew into place.

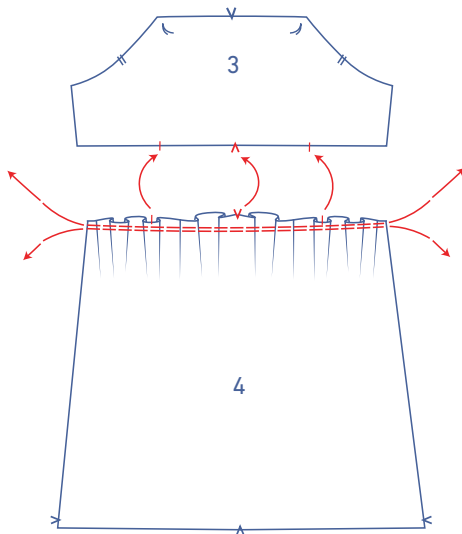


Finish the raw edges together with overlock stitching.



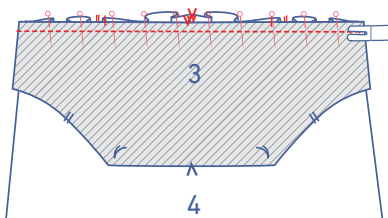
2

Sew 2 parallel rows of stitching at the top of the skirt back (4), using a long stitch at a low thread tension. Leave a long thread tail at the start and end of the rows.

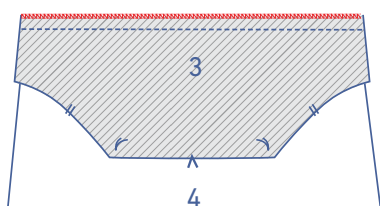


Carefully tug the ends of the threads to gather the fabric into ruffles.

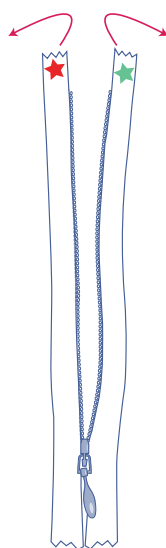
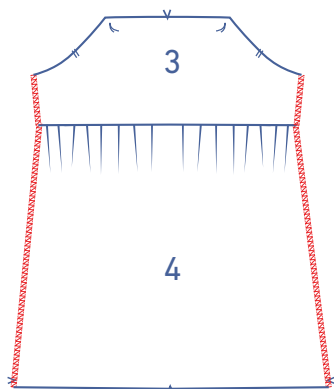
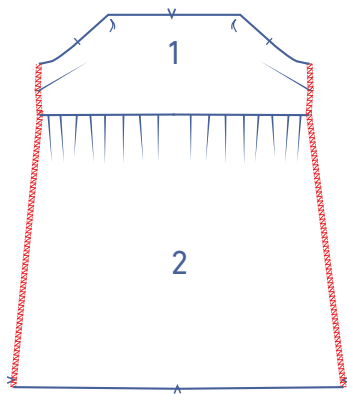
Distribute the ruffles until the notches are matching.



Pin the bottom of the back piece (3) to the top of the back skirt (4), right sides together. Sew into place.



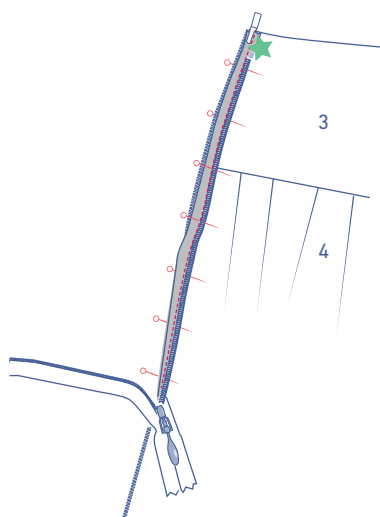
Finish the raw edges together with overlock stitching.



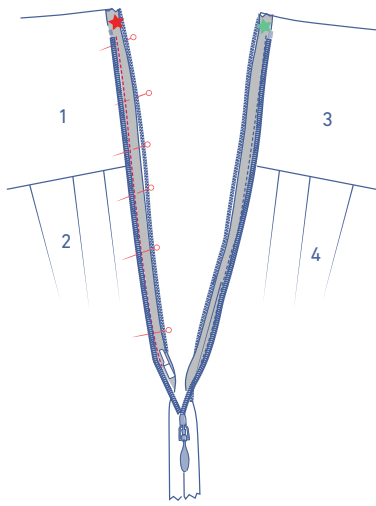
3

Finish the side seams of the front and back with overlock stitching.

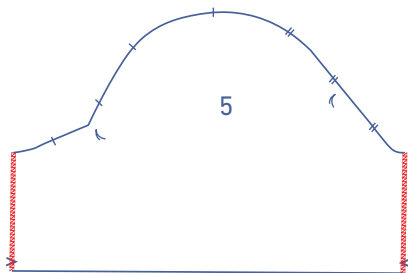
Place the invisible zip in front of you with the right side facing up. Open the zip.



Now fold the zip tape marked with the green star to the right and pin it to the left side seam of the back (3+4). The zip tape should align with the edge of the fabric and the zip teeth should start at 1.5 cm under the raw upper edge. Sew into place with the invisible zipper foot.

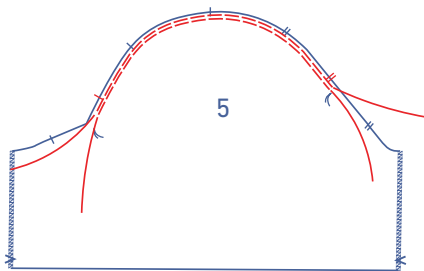


Now fold the zip tape marked with the red star to the left and pin it to the right side seam of the front (1+2). The zip tape should line up with the edge of the front (1+2). The top of the zip tape should line up evenly with the edge of the fabric. Sew into place with the invisible zipper foot.

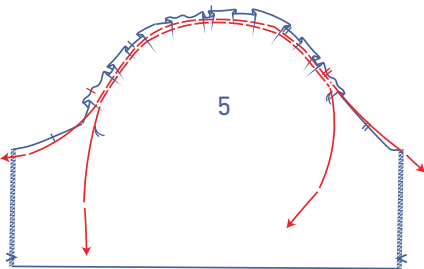


4

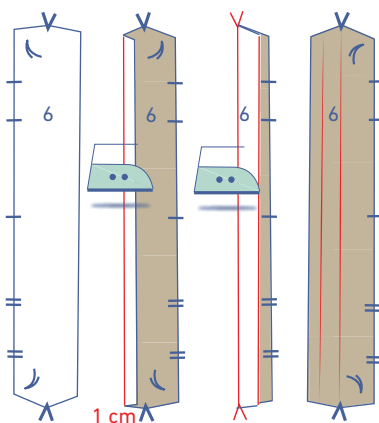
Finish the sides of the sleeve (5) with overlock stitching.



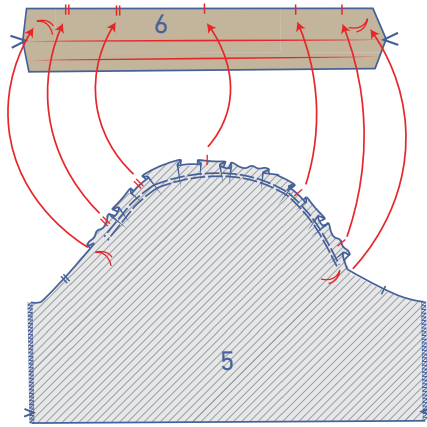
Sew 2 parallel rows of stitching along the top of the sleeve, using a long stitch length at a low thread tension. Sew just past the notches illustrated in red. Leave long thread tails at the start and end of the rows.



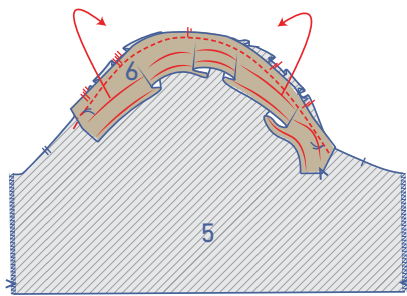
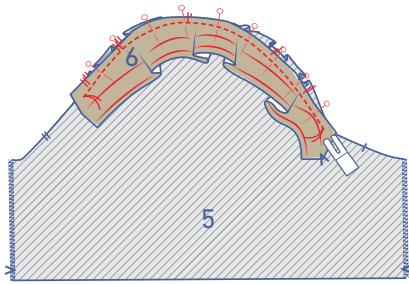
Carefully tug the ends of the threads to gather the fabric into ruffles.



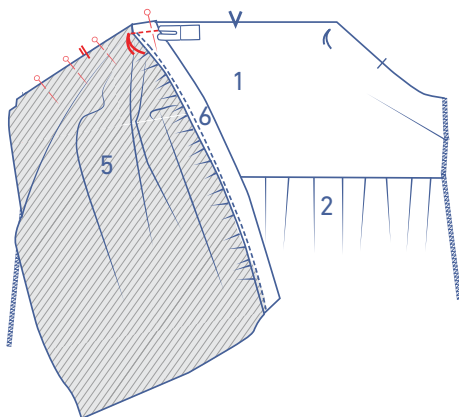
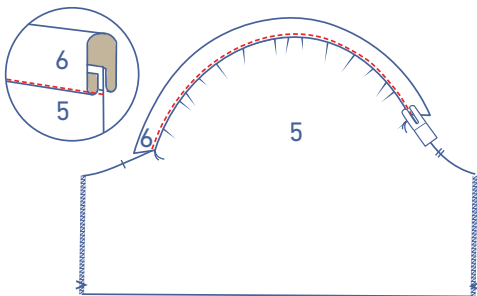
Fold over the long end of the neck trim (6) without markings to the wrong side by 1cm and press. Next, fold the neck trim in half lengthwise at the V notches (with the wrong sides touching). Open back out again.



Pin the wrong side of the sleeve (5) to the right side of the neck trim (6) matching the notches. Distribute the ruffles on the sleeve until the notches are matching. Sew into place.

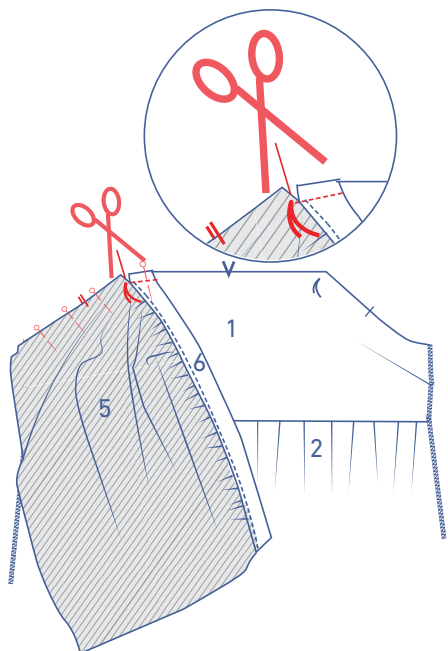


Fold the neck trim towards the right side of the sleeve (at the pressed fold line), tucking in the pre-pressed 1 cm seam allowance. Sew between the marking threads right next to the edge of the pressed seam allowance.

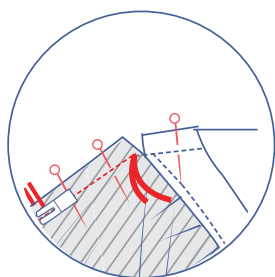


5

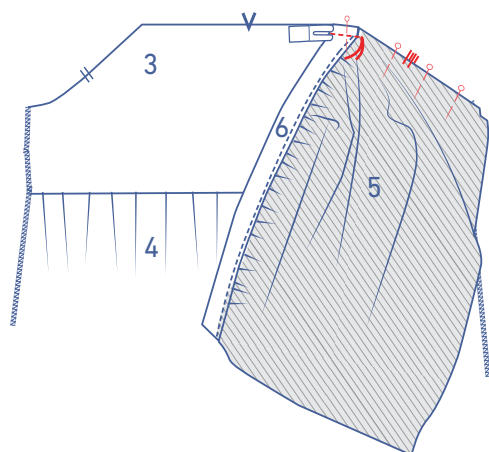
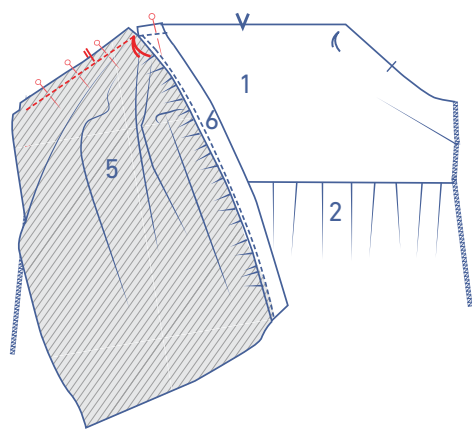
Pin and sew the sleeve + neck trim to the top of the front, making sure the marking threads are matching.



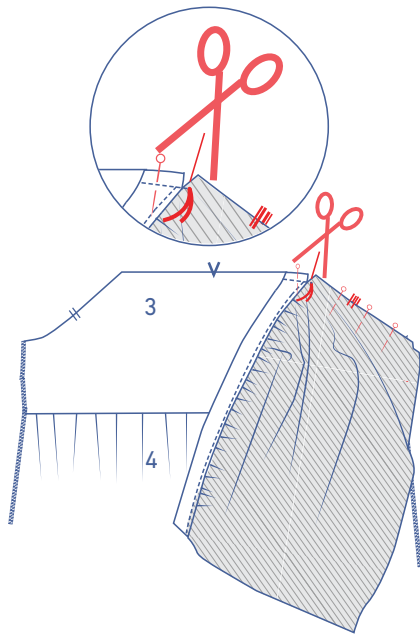
Raise the presser foot and snip into to the seam allowance of the sleeve + neck trim until just before the needle.



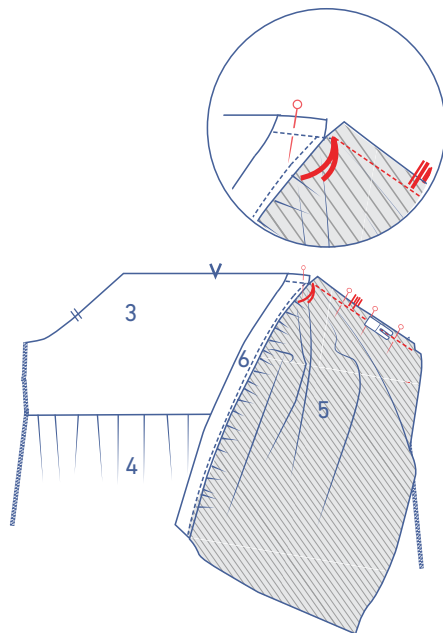
Turn the garment, lower the presser foot down again and now stitch the slanted edge together, with the notches matching.



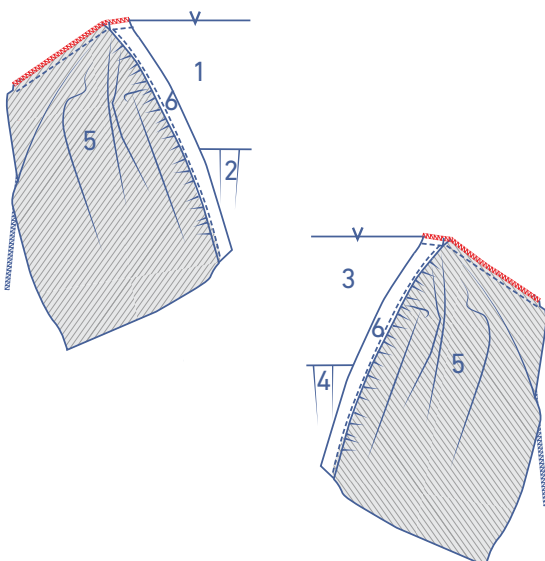
Repeat the step above, this time attaching the sleeve + neck trim (5+6) to the top of the back (3). Pin and sew the sleeve + neck trim (5+6) to the back (3) as shown, making sure the marking threads are matching. Stop at the marking threads and leave the needle in the fabric.



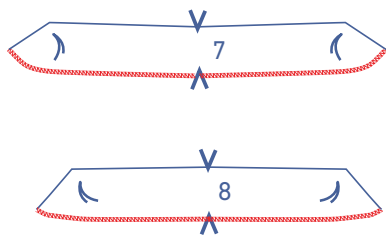
raise the presser foot and snip into to the seam allowance of the sleeve + neck trim until just before the needle.



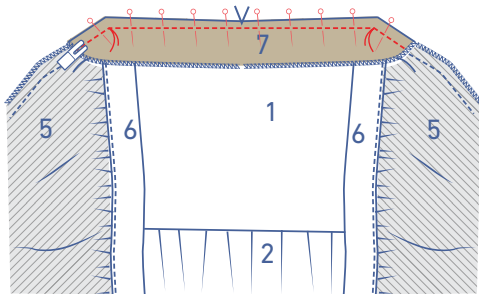
Turn the garment, lower the presser foot down again and now stitch the slanted edge together, with the notches matching.



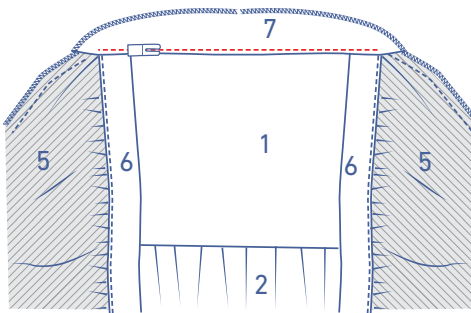
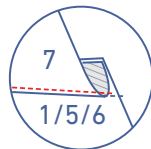
Finish all raw edges together with overlock stitching.



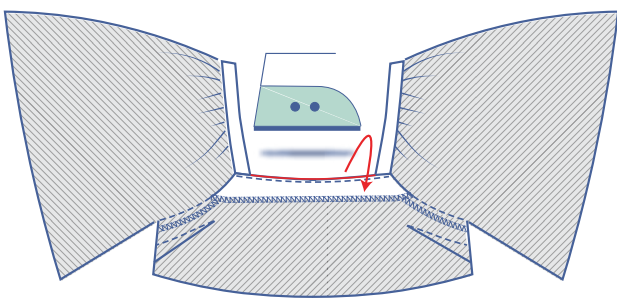
Finish the bottoms of the front facing (7) and back facing (8) with overlock stitching.



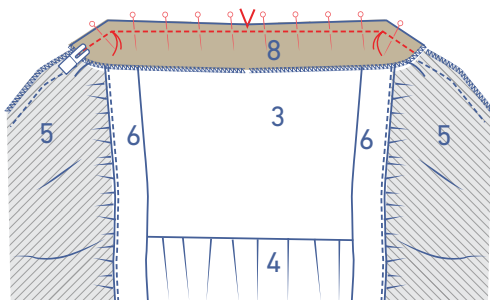
Pin and sew the top of the front facing to the top of the front (the facing will overlap the wrong side of the sleeve) matching the marking threads.



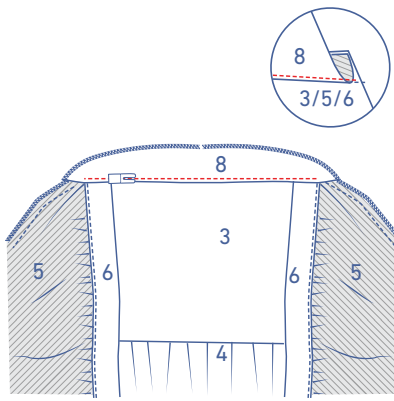
Fold the facing and the seam allowance towards the facing and stitch the facing right next to the seam. The reason for doing this is to make sure the facing stays neatly on the wrong side, giving you a clean, straight neckline.



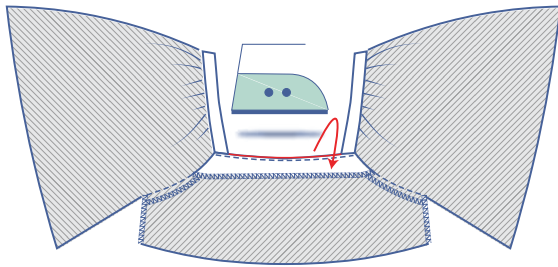
Press the facing back onto the wrong side of the front.



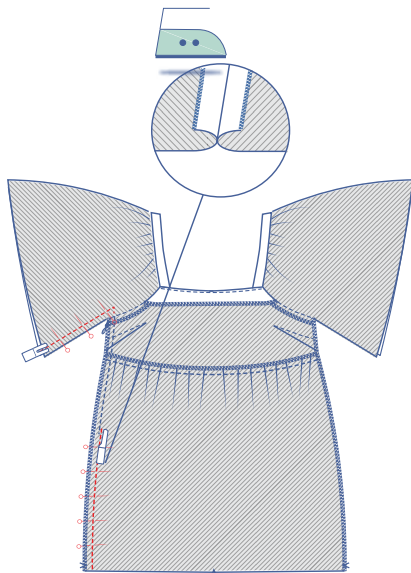
Pin and sew the top of the back facing to the top of the back (the facing will overlap the wrong side of the sleeve) matching the marking threads.



Fold the facing and the seam allowance towards the facing and stitch the facing right next to the seam. The reason for doing this is to make sure the facing stays neatly on the wrong side, giving you a clean, straight neckline.

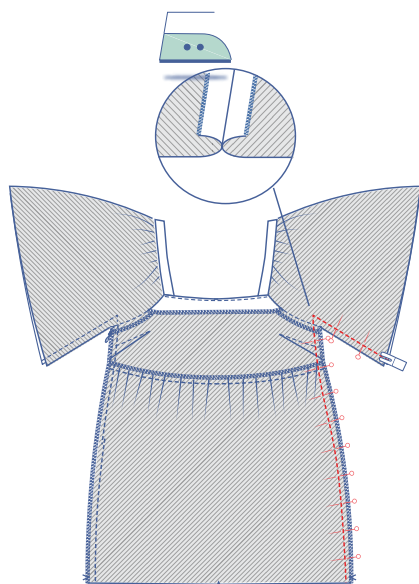


Press the facing back onto the wrong side of the back.



6

Close the zip and sew the remaining side and underarm seams at the top and bottom of the zip using the narrow zipper foot or zipper foot. Start sewing a little above and just next to your previous row of stitching (where you finished sewing the zipper). Press the seam allowance open.

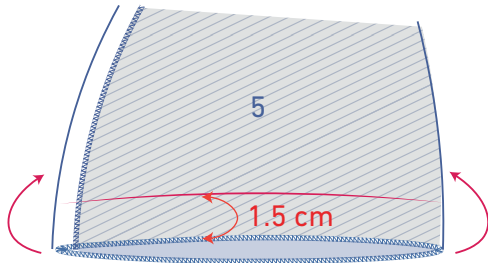


Pin and sew the other underarm and side seam as shown using the standard presser foot. Press the seam allowance open.

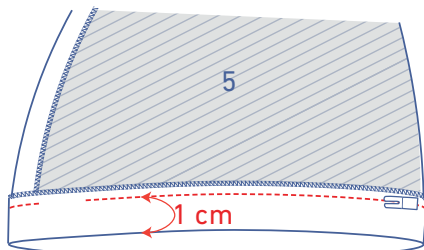


7

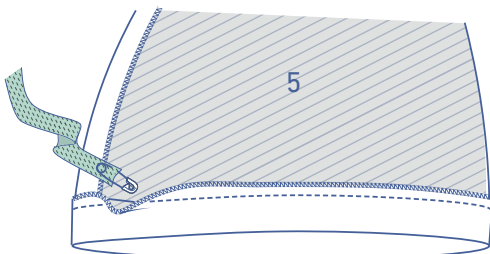
Finish the sleeve hem with overlock stitching.



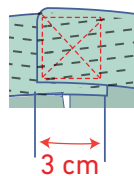
Press the hem allowance up by 1.5 cm.



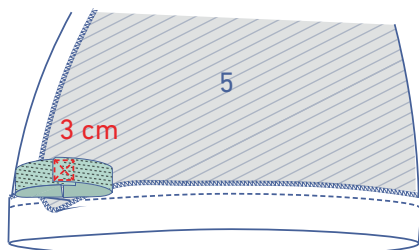
Sew into place at 1 cm from the edge. Leave a small opening for threading the elastic through. (Sew into place completely if you are not using elastic).

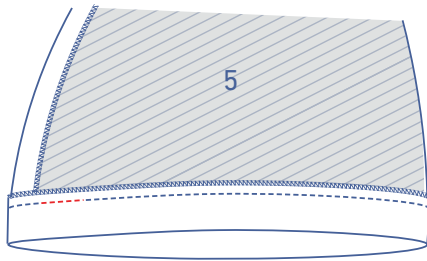


Thread the elastic through the opening.

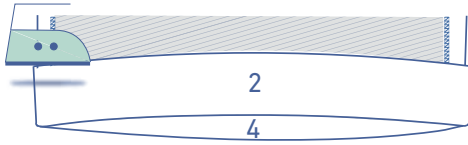


Overlap the ends of the elastic band by 3 cm. Sew together with a Box X stitch.



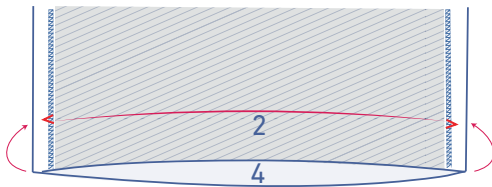
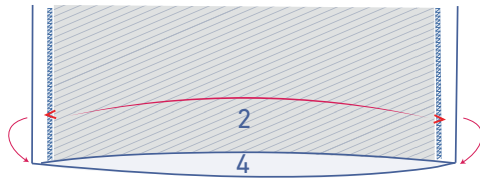


Tuck the elastic back neatly into the casing and sew the opening closed.

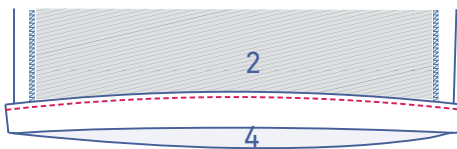
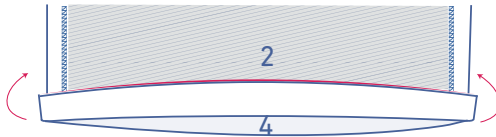


8

Press the seam allowance of the dress over at the V notches and open back out.



Fold the raw edge to the pressed fold line and then fold up again.



Sew into place right next to the edge.